



**Consistently
Delivering On
Commitments**

7th July 2017

Innovation • Performance • Growth



Waihi Operation

Analyst Site Visit

Cautionary & Technical Statements



Cautionary Notes - Information Purposes Only

The information contained in this presentation is provided by OceanaGold Corporation ("OGC") for informational purposes only and does not constitute an offer to issue or arrange to issue, or the solicitation of an offer to issue, securities of OGC or other financial products. The information contained herein is not investment or financial product advice and has been prepared without taking into account the investment objectives, financial situation or particular needs of any particular person. The views, opinions and advice provided in this presentation reflect those of the individual presenters only. No representation or warranty, express or implied, is made as to the fairness, accuracy, completeness or correctness of the information, opinions and conclusion contained in this presentation. To the maximum extent permitted by law, none of OGC or any of its directors, officers, employees or agents accepts any liability, including, without limitation, any liability arising out of fault or negligence, for any loss arising from the use of the information contained in this presentation. Furthermore, this presentation does not constitute an offer of shares for sale in the United States or to any person that is, or is acting for the account or benefit of, any U.S. person (as defined in Regulation S under the United States Securities Act of 1933, as amended (the "Securities Act")) ("U.S. Person"), or in any other jurisdiction in which such an offer would be illegal. OGC's shares have not been and will not be registered under the Securities Act.

Cautionary Statement Concerning Forward Looking Information

Certain information contained in this presentation may be deemed "forward-looking" within the meaning of applicable securities laws. Forward-looking statements and information relate to future performance and reflect OGC's expectations regarding the generation of free cash flow, execution of business strategy, future growth, future production, estimated costs, results of operations, business prospects and opportunities of OGC and its related subsidiaries. Any statements that express or involve discussions with respect to predictions, expectations, beliefs, plans, projections, objectives, assumptions or future events or performance (often, but not always, using words or phrases such as "expects" or "does not expect", "is expected", "anticipates" or "does not anticipate", "plans", "estimates" or "intends", or stating that certain actions, events or results "may", "could", "would", "might" or "will" be taken, occur or be achieved) are not statements of historical fact and may be forward-looking statements. Forward-looking statements are subject to a variety of risks and uncertainties which could cause actual events or results to differ materially from those expressed in the forward-looking statements and information. They include, among others, the accuracy of mineral reserve and resource estimates and related assumptions, inherent operating risks, and those risk factors identified in OGC's most recent annual information forms prepared and filed with securities regulators which are available on SEDAR at www.sedar.com under OGC's name.

There are no assurances OGC can fulfil forward-looking statements and information. Such forward-looking statements and information are only predictions based on current information available to management of OGC as of the date that such predictions are made; actual events or results may differ materially as a result of risks facing OGC, some of which are beyond OGC's control. Although OGC believes that any forward-looking statements and information contained in this presentation are based on reasonable assumptions, readers cannot be assured that actual outcomes or results will be consistent with such statements. Accordingly, readers should not place undue reliance on forward-looking statements and information. OGC expressly disclaims any intention or obligation to update or revise any forward-looking statements and information, whether as a result of new information, events or otherwise, except as required by applicable securities laws. The information contained in this release is not investment or financial product advice.

Technical Disclosure

The exploration results were prepared in accordance with the standards set out in the 2012 Edition of the 'Australasian Code for Reporting of Exploration Results, Mineral Resources and Ore Reserves' ("JORC Code") and in accordance with National Instrument 43-101 – Standards of Disclosure for Mineral Projects of the Canadian Securities Administrators ("NI 43-101"). The JORC Code is the accepted reporting standard for the Australian Stock Exchange Limited ("ASX"). For further scientific and technical information (including disclosure regarding mineral resources and mineral reserves) relating to the Haile Mine, the Macraes Mine and the Didipio Mine please refer to the NI 43-101 compliant technical reports available at sedar.com under the Company's name.

General Presentation Notes

- ▶ All AISC and cash costs are net of by-product credits unless otherwise stated
- ▶ All financials are denominated in US Dollars unless otherwise stated



INTRODUCTIONS & AGENDA



8:00 AM	Welcome and Safety Induction
8:15 AM	Waihi Operations Overview
10:15 AM	Correnso Underground Tour
12:00 noon	Lunch
1:00 PM	Process Plant Tour
2:30 PM	Open Pit Tour (from the lookout)
3:00 PM	Leave Waihi for Airport
5:00 PM	Arrive at Airport

Waihi Management Team

Bernie O'Leary
General Manager & Snr Site Executive



- Over 30 years industry experience
- 6 years as GM at Macraes operation, 18 months at Waihi
- Mining engineer with extensive open pit and underground experience
- Worked extensively in Australia, the Americas and New Zealand

Lorraine Tockler
Exploration & Geology Manager



- 38 years mining experience, primarily in epithermal vein deposits
- Graduated MSc Geology from Auckland University
- Experience in diverse gold exploration and geological settings
- Involved in the discovery, feasibility and mining of the Favona, Moonlight, Trio and Correnso deposits

Kerry Watson
HSEC Manager



- Diverse work background including Environmental Manager for one of NZ's prominent electricity generators
- Significant experience in environmental management, monitoring, regulatory processes and community engagement

Campbell Haines
Acting Processing Manager



- Metallurgist with experience in Australia and NZ
- 5 years experience at Waihi

Charlie Gawith
Underground Manager



- Over 14 years mining industry experience
- Bachelor of Mining Engineering
- Experience working in Zimbabwe, Australia & New Zealand

Kevin Storer
Site Services Manager



- 25 years experience within the mining industry
- Business Management Degree Monash Mt Eliza
- Boddington Gold Mine Contracts Manager
- Golden Cross Mine Project Cost Controller/Contracts Manager

Brigid Quinn
Human Resources Manager



- Over 15 years experience in generalist human resource roles
- Previously Senior HR Advisor at Macraes



SAFETY INDUCTION



All visitors must:

- ▶ Wear all appropriate PPE (as provided)
- ▶ Remove all finger rings
- ▶ No smoking
- ▶ Remain with your OceanaGold host/escorts at all times
 - » Do not wander off
- ▶ Be aware of Slip/Trip or Fall opportunities
 - » Walking Surfaces
 - » Changing Ground Conditions
- ▶ Obey all signage and rules
- ▶ Seat belts must be worn on mine site
- ▶ Photographs can be taken with permission of host

In case of emergency, remain with your OceanaGold host/escorts and follow all directions given.

- ▶ Notify OceanaGold host/escorts of incidents or injuries immediately
- ▶ For an emergency, contact Security :
 - » On radio channel 1;
 - » Or by telephone 0800 00 55 22

NEW ZEALAND



PRODUCTION

2017
GUIDANCE

WAIHI

Gold (oz)	110,000 – 120,000
AISC (per oz sold)	\$740 – \$790

RESOURCES⁽¹⁾

		WAIHI
P&P Reserves	Gold (Moz)	0.35
	Silver (Moz)	1.31
Total Resources⁽²⁾	Gold (Moz)	0.57
	Silver (Moz)	1.58

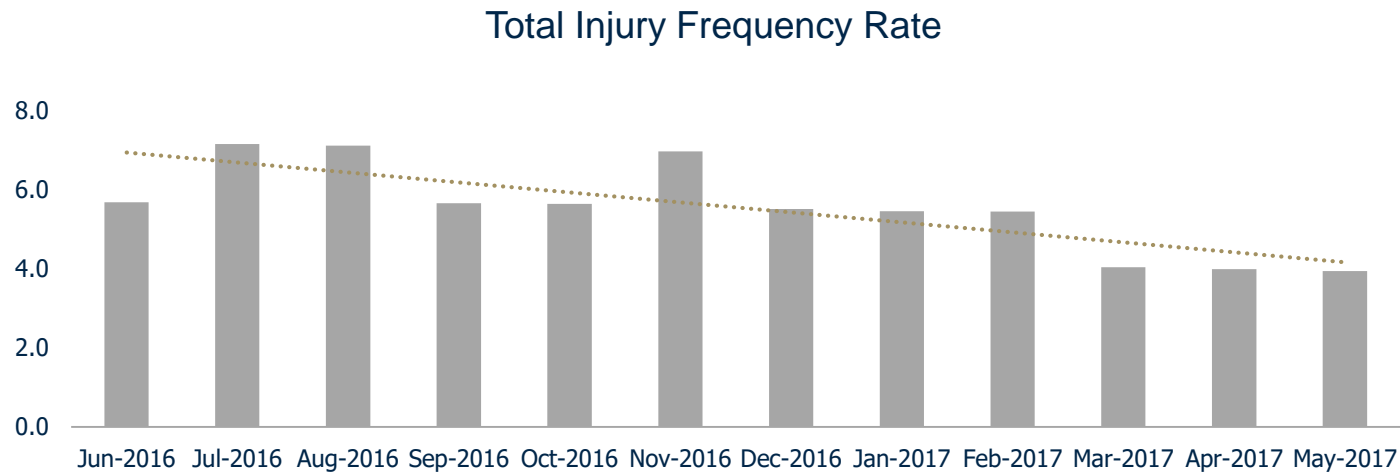
1. As at 31 Dec 2016 – refer to www.oceanagold.com
 2. Total Resources = M&I and Inferred Resources. M&I Resources are inclusive of reserves

WORKING TO CREATE A SAFE AND EFFICIENT WORKPLACE

IMPROVING SAFETY: A 12 month reducing trend of TRIFR

SAFETY SYSTEMS: Waihi has a mature, behaviour based safety system

EMPLOYEE ENGAGEMENT: Waihi has a strong, embedded safety culture, reinforced by a continuous improvement mindset



History of Waihi

MININGS HISTORY: Mining at Waihi started in 1887 until 1952. Modern mining started in 1987

ECONOMIC CONTRIBUTIONS: Mining is a significant contributor to local and regional economy

LOCAL EMPLOYMENT: Waihi has ~4,500 residents; workforce is predominantly local or regional; significant direct and indirect employment



LOOKING TO CREATE A LONG LIFE ASSET WITH A 10+ YEAR LOM

STRONG PRODUCTION ⁽¹⁾: ~300,000 ounces at an average AISC margin of \$494 per ounce

EXPLORATION SUCCESS: Consistent resource & reserve replacement for nearly 3 decades, extensive exploration to unlock exploration potential

EXPLORATION EXPENDITURE: Highest allocation of exploration expenditure between \$12m-\$15m; Significant opportunities that have potential to materially extend the LOM to include 10+ years

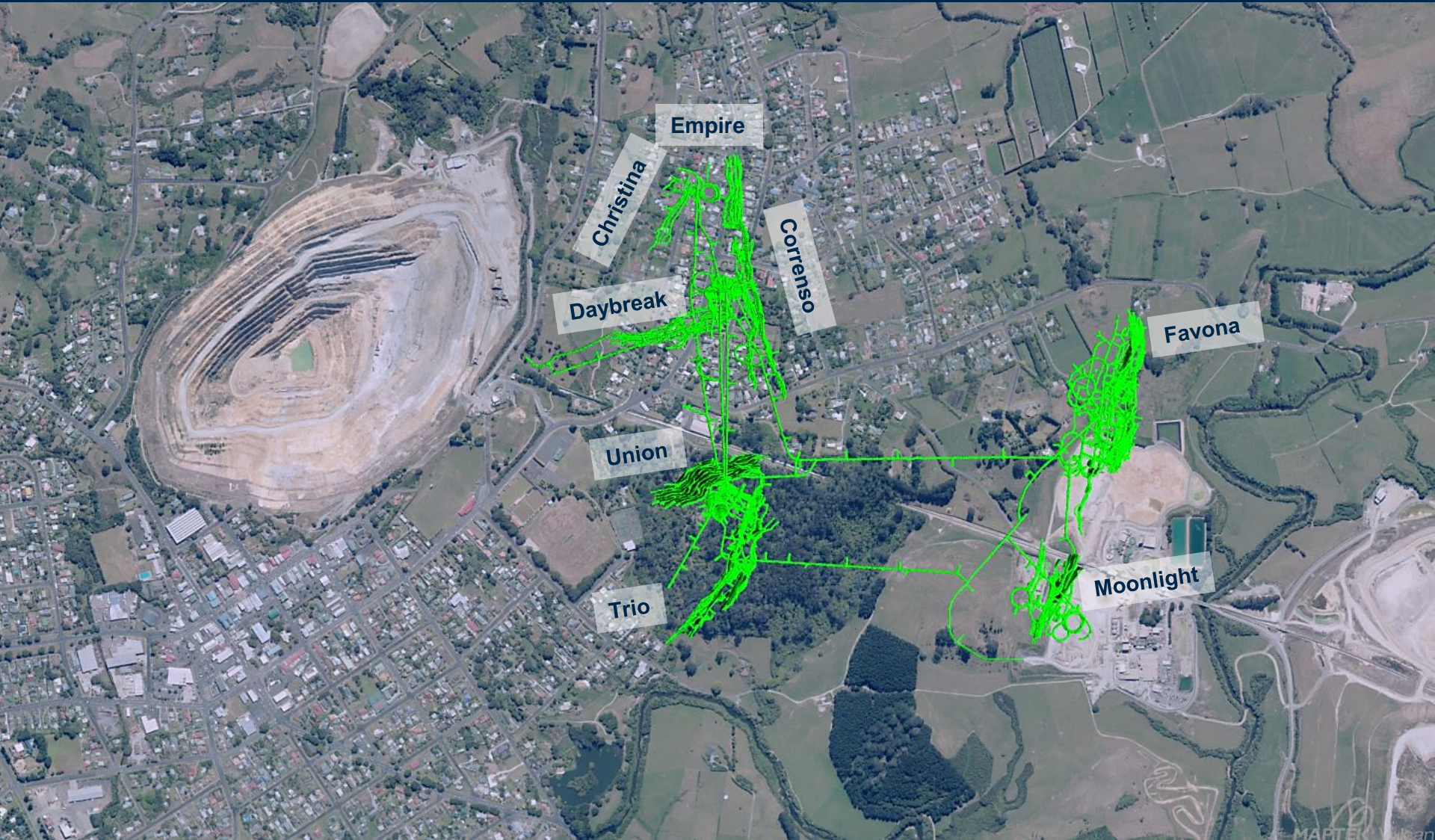
STAKEHOLDER ENGAGEMENT: Successful integration of workforce; continue to proactively engage with all stakeholders to inform and educate as to the progress and benefits of mining

OPERATING STATISTICS		
Operating Costs		2017e
Mining costs	USD / t mined	45.00 - 46.00
Processing costs	USD / t milled	26.00 - 27.00
G&A Costs	USD / t milled	18.00 - 20.00

1. Between H2 2015, using mid point guidance and 2017 gold price of \$1,200

Waihi Mine Footprint

THE MINE HAS A LONG AND POSITIVE RELATIONSHIP WITH THE COMMUNITY



100% LOCAL EMPLOYEMENT

RESIDENTIAL OPERATION: Significant and continuous stakeholder engagement

UNDERGROUND MINING: Operates 24/7 with three crews

CONTRACTORS: Exploration drilling and Security operating 24/7

OPEN PIT: No ore mined from the Martha Pit since the Pit Wall failure in April 2015

PROCESSING: Operates 24/7 with four crews

WORKFORCE

Waihi Gold Mine	FTE
-----------------	-----

Underground	123
-------------	-----

Open Pit	1
----------	---

Processing	47
------------	----

HSE	14
-----	----

Community	4
-----------	---

Site Services	5
---------------	---

Admin/Commercial/HR	11
---------------------	----

Exploration	25
-------------	----

Waihi Gold Mine	Contractors
-----------------	-------------

Drilling (Boart/Alton)	70
------------------------	----

Security	14
----------	----

Various	36
---------	----

TOTAL	350
--------------	------------

INCREASED PRODUCTION EXPECTED NEXT QUARTER

		2016 GUIDANCE	2017 GUIDANCE		2017 CAPEX (USD m)
Gold Production	<i>oz</i>	115,000 – 125,000	110,000 – 120,000	Non-Sustaining	2 – 3
AISC	<i>per oz sold</i>	\$700 – \$750	\$740 – \$790	Sustaining + Pre-strip / capitalised mining	10 – 14
Cash Costs	<i>per oz sold</i>	\$480 – \$530	\$460 – \$510	Exploration	12 - 15

PRODUCTION: H2 production expected to be higher than H1

EXPLORATION: Increasing exploration drilling and budget → strong focus on reserve replacement

MARTHA PROJECT: Advancing Martha Project to unlock the one million ounce exploration target in the medium term

Martha Pit Stabilisation Works

WORKING TO REGAIN ACCESS TO THE OPEN PIT

CURRENT WORKS: We continue to stabilise the pit wall, installing benches to unload the failure front

STABILISATION: Movement in the failure has decreased significantly and the failure has stabilised

MONITORING: Prism and radar have continued to monitor the failure. Was accurate in predicting the wall failure

STUDIES: Studies are underway to identify how to access the ~70,000 ounces buried at the base of the failure.

Mid-2016



April 2017



Correnso Underground Mine

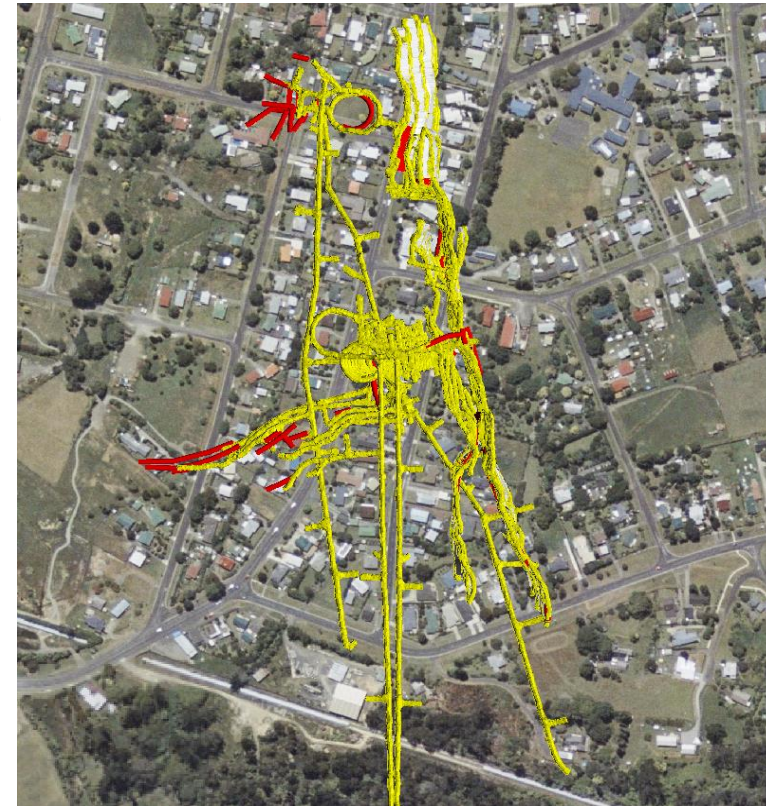
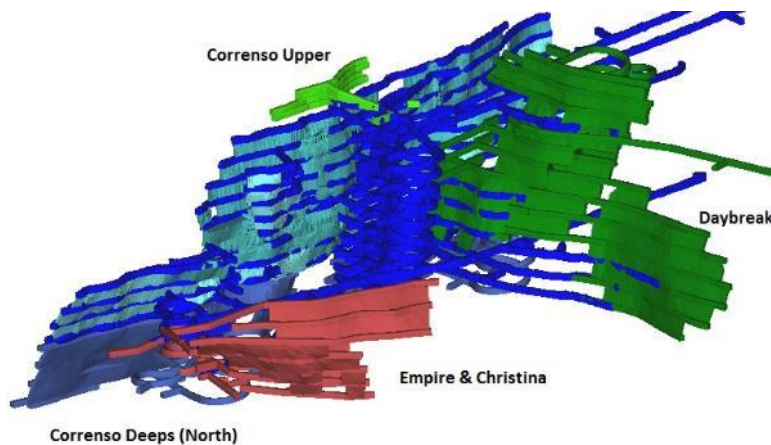
HIGH ENGAGEMENT AND MONITORING DUE TO PROXIMITY OF MINING ACTIVITY

MINING METHOD: Modified Avoca

PRODUCTION: Currently producing ~10,000 ounces per month. Paid back initial investment and generating positive cash flows

COST EFFICIENCIES: Transitioned to owner operator with an estimated \$4.2m of cost saving

UNDERGROUND PUMPING STATION: Dewatering capacity increased to 180 litres/sec to access Correnso Deeps

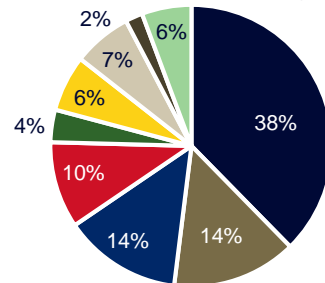


Correnso Underground Fleet

Equipment Type	Model	Quantity
Jumbos	Tamrock Axera 7-240	4
Production drills	Tamrock Solo 5-5V	1
	Tamrock Solo DL 3305	1
Loaders	Cat 1700	3
Loader	Cat 2900	2
Trucks	Atlas Copco MT 5020	4
Charge unit	Normet 1610B	1
Shotcrete unit	Normet 6050W	1
Tool carriers	Volvo L120F	2
	Volvo L120G	1
Grader	Caterpillar 12H	1
Water cart	Toro 30D	1
Hiab Truck	Isuzu Hiab Truck	1



Breakdown of Mining Costs



- Labour
- Drill and Blast
- Maintenance and Spares
- Underground Ground Support
- Diesel
- Power
- Consumables
- Operating Lease
- Other

Processing Plant

OPTIMISED PROCESSED TO LOWER COSTS WHILE MAINTAINING RECOVERIES

COST EFFICIENCIES: We optimised plant performance to reduce costs while maintaining recoveries

MILL THROUGHPUT: Currently 0.5Mtpa while open pit operations remain suspended. Maximum throughput 0.9Mtpa (U/G ore only); or 1.3Mtpa (O/P ore only)

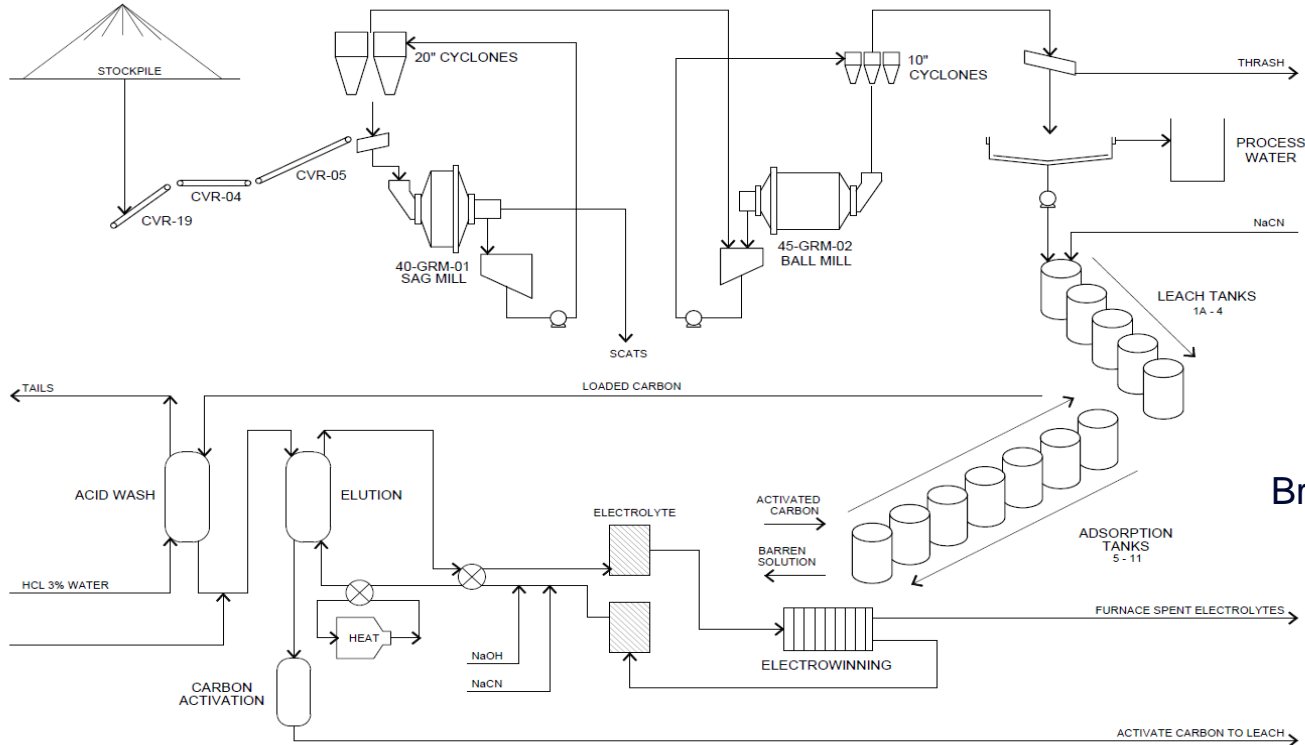
PROCESSING CIRCUIT: Crushing, grinding, carbon-in-pulp, elution, electro winning, and smelting

RECOVERY: Achieving >90% in-line with historical performance

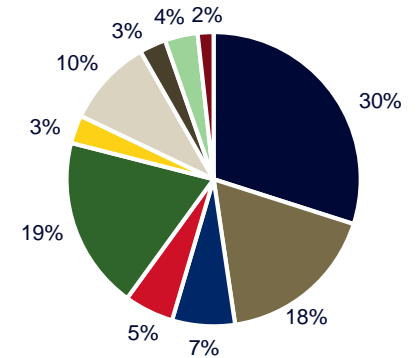
STRATEGY: Process plant optimisation strategy in place



Process Plant Flow Sheet



Breakdown of Processing Costs



- Labour
- Reagents
- Grinding Media
- Mill Liners
- Power
- Consumables
- Heavy equipent leasing
- Toll Treatment
- Assay QA/QC
- Other

Tailings Storage Facilities

STORAGE FACILITIES: One active and one dormant

REHABILITATION: Undertake progressive rehabilitation works in line with our licence requirements

SAMPLING: Regularly undertake sampling and report on an annual basis to the Regulator

GEOTECHNICAL: Complete an annual TSF Report, including an assessment of the TSF structural integrity





EXPLORATION



Making Waihi Top Tier

EXPLORATION PROGRAM CONTINUES TO UNLOCK VALUE

December 31, 2014

Total Resource⁽¹⁾
360,000
ounces

December 31, 2015

Total Resource⁽¹⁾
430,000
ounces

December 31, 2016

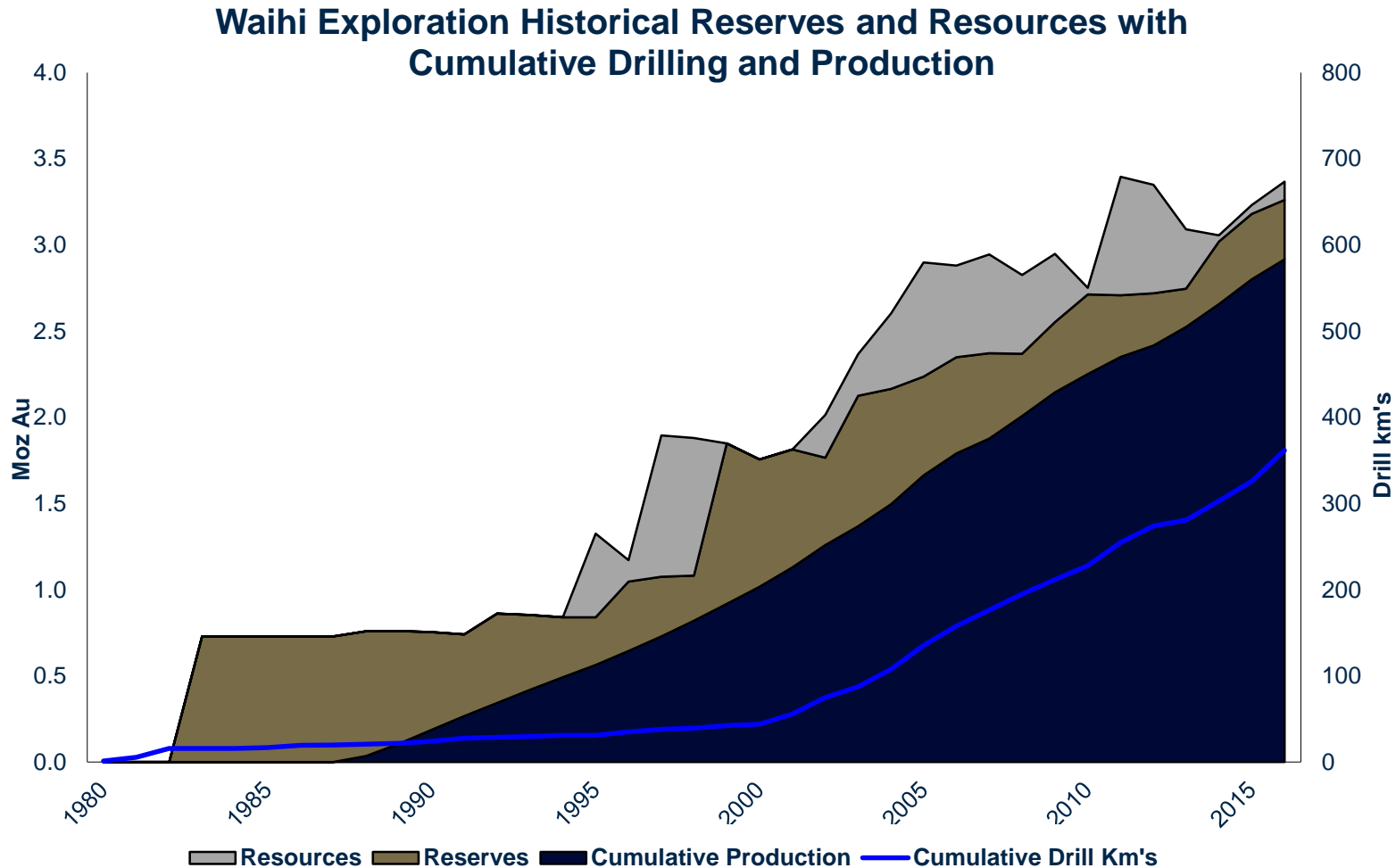
Total Resource⁽¹⁾
570,000
ounces

~300 koz mined during 2015 and 2016

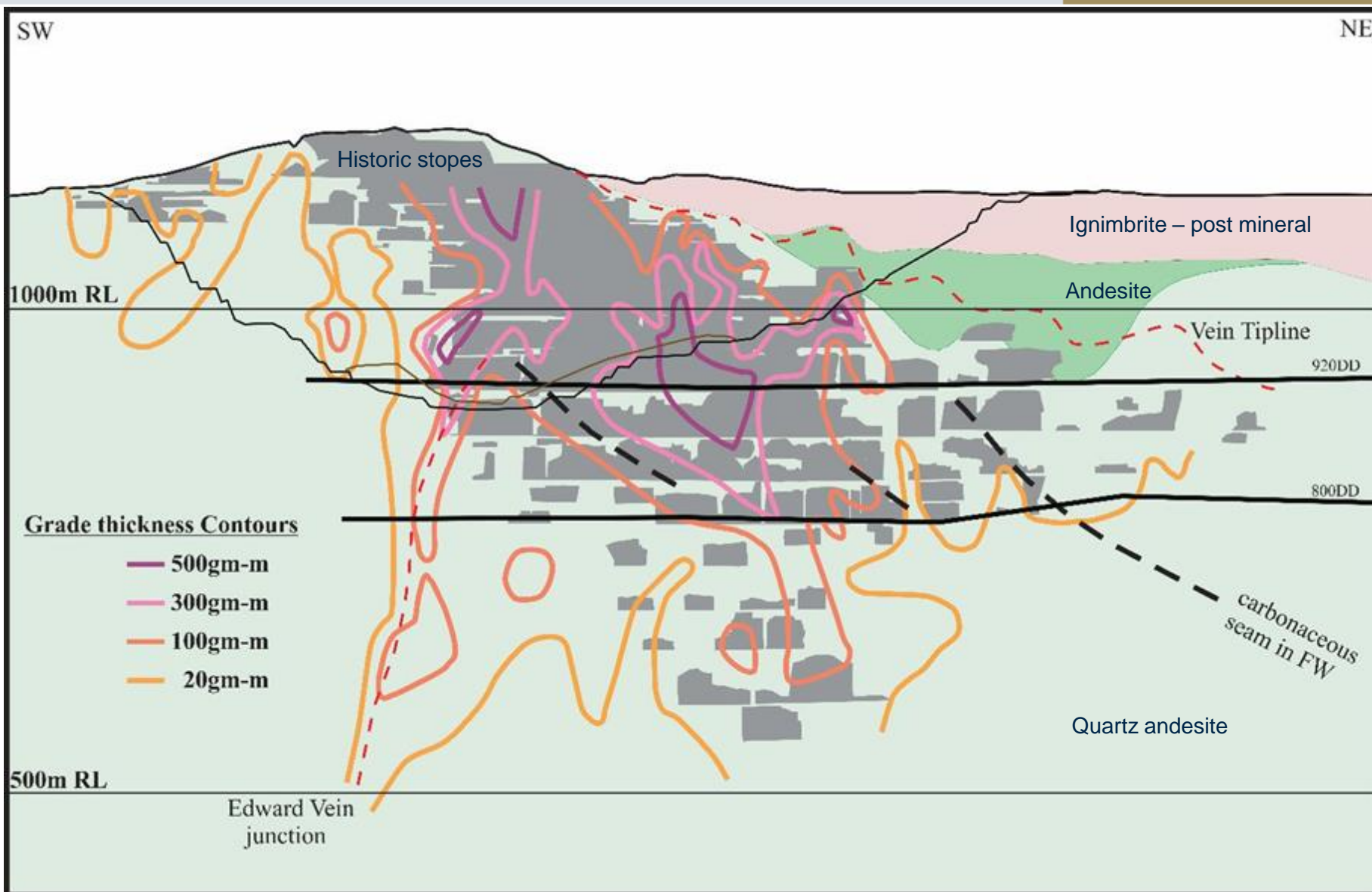
1. Total Resources = M&I and Inferred Resources. M&I Resources are inclusive of reserves. Refer to pg. 31 for R&R Table
2. Based on a gold price of \$1,200/oz

Waihi Organic Growth

SEEKING TO UNLOCK ADDITIONAL VALUE THROUGH THE DRILL BIT: +42KM IN 2017



Martha Pit Long Section



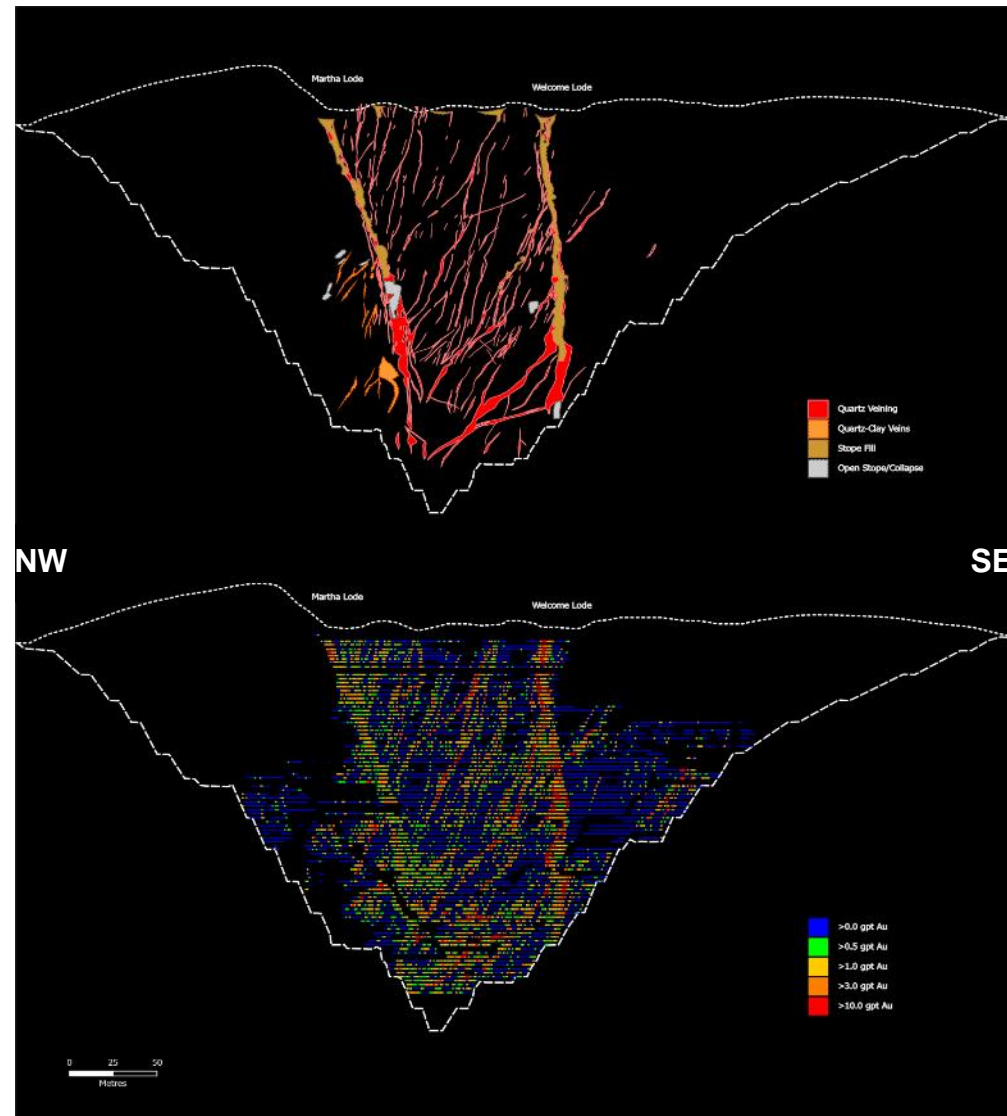
Martha Pit Mapping and Grade Control

EXPLORATION FOCUS: During 2017 we will establish two drill drives, continue underground and surface drilling and progress our studies

MARTHA PIT: the Martha and Welcome Lodes continue to extend vertically, with a strong correlation between mineralisation and vein structures

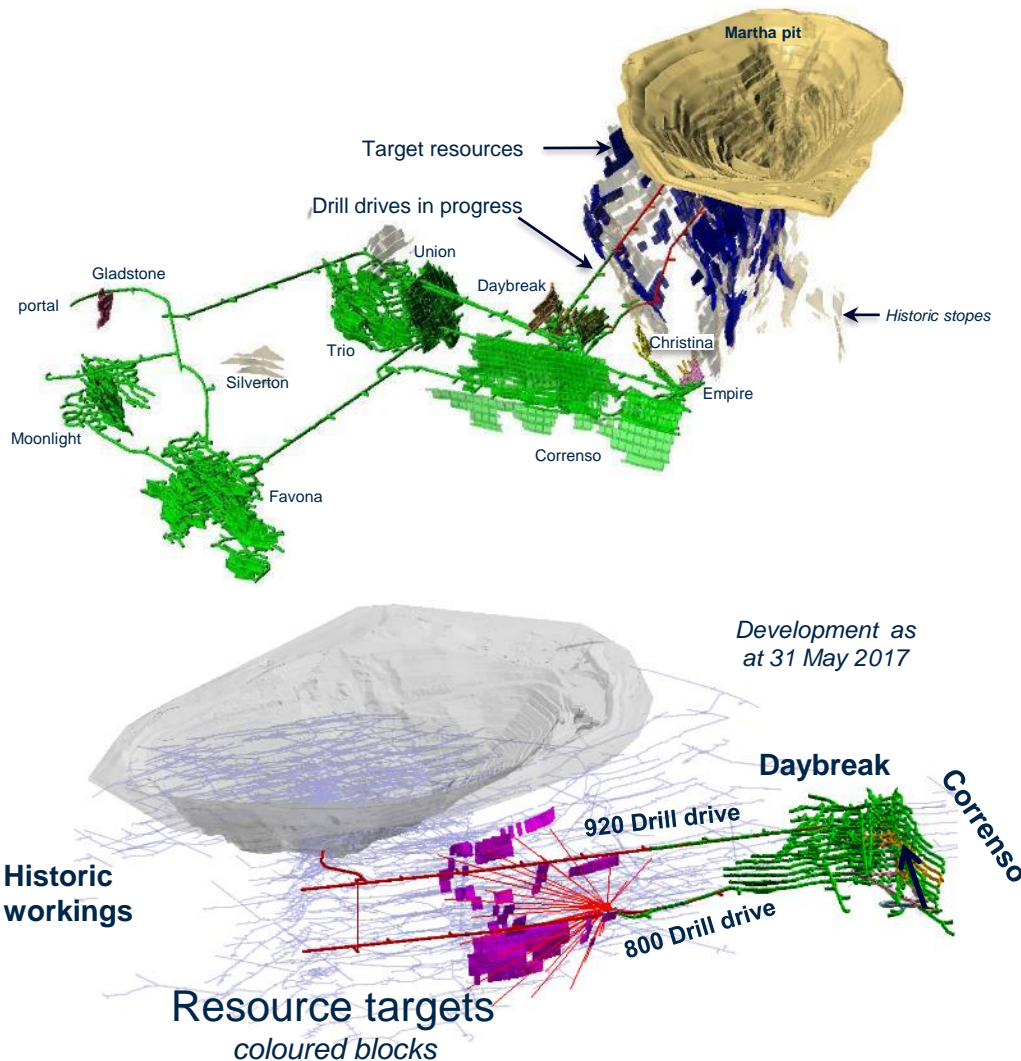
SURFACE DRILLING: 3 to 4 drill rigs testing Gladstone, Favona, Silverton & other targets

UNDERGROUND DRILLING: 3 drill rigs focused on resource extension & conversion



Waihi 2017 Exploration Program

MULTIPLE TARGETS AT WAIHI & REGIONALLY WITH FOCUS ON NEAR-MINE



Martha Project

DRILL DRIVE 1 - 800mRL

Construction status: **complete to 2017 drill cuddies**

Diamond drilling planned: **12,200m**

DRILL DRIVE 2 - 920mRL

Construction status⁽¹⁾: **40% complete**
Completion: **Q4 2017**

Underground Drilling

Infill and extensional: **18,000m+**

Other Opportunities

Brownfields drilling: **17,000m+**
Greenfields drilling: **6,000m+**

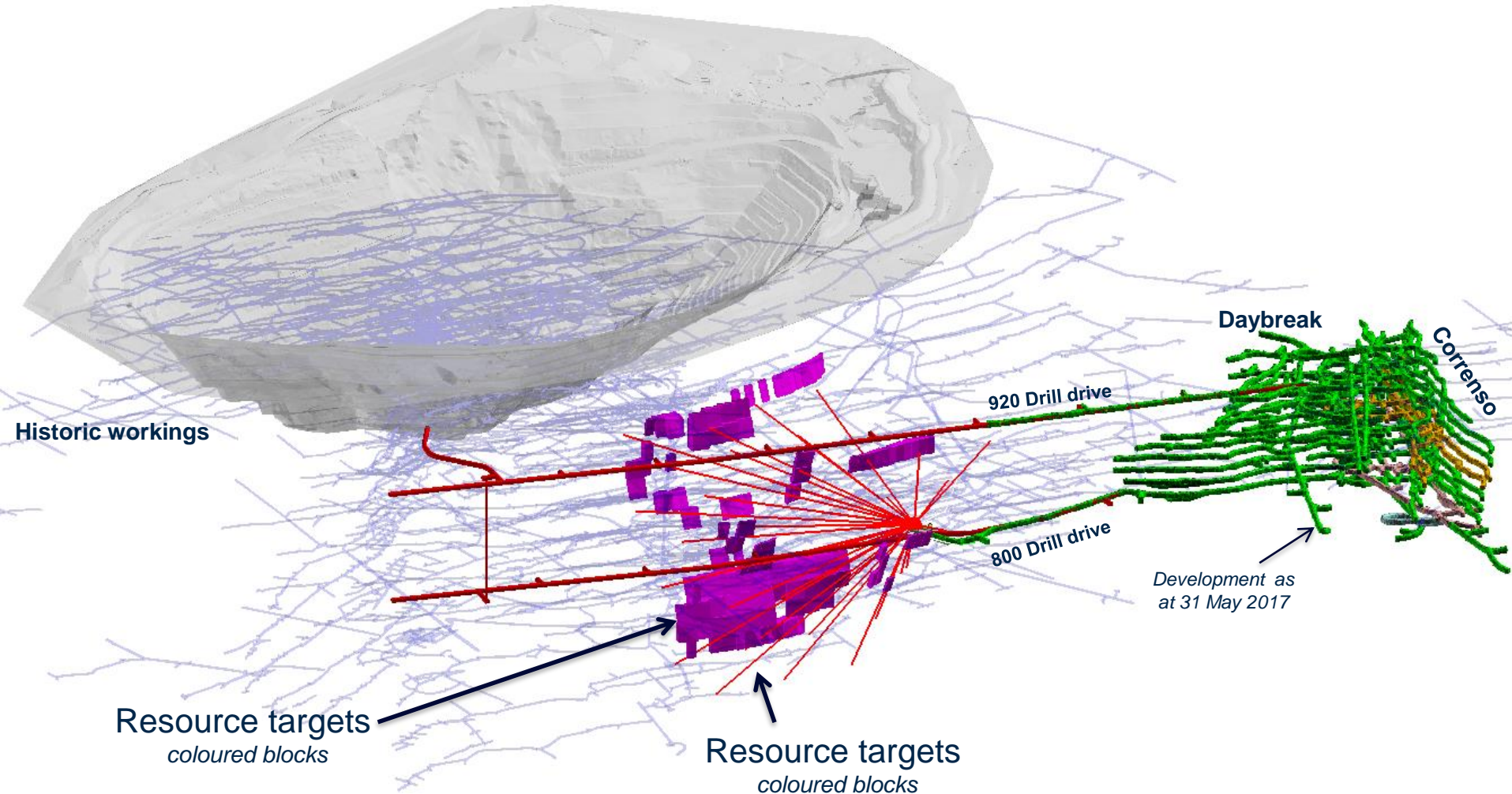
1. As at 26 June 2017

Exploration Drilled Metres

Target	YTD Metres Drilled	YTD # of Holes	2017e Metres	2017e # holes
Correnso extensions	7,939	37	4,100	20
Gladstone	5,548	33	4,800	28
Favona	3,205	24	8,500	64
Silverton	999	9	1,000	9
Martha	0	0	12,200	35
Brownfield exploration	3,757	8	6,600	14
Greenfield WKP	0	0	6,000	13
Total	21,448	111	43,200	183

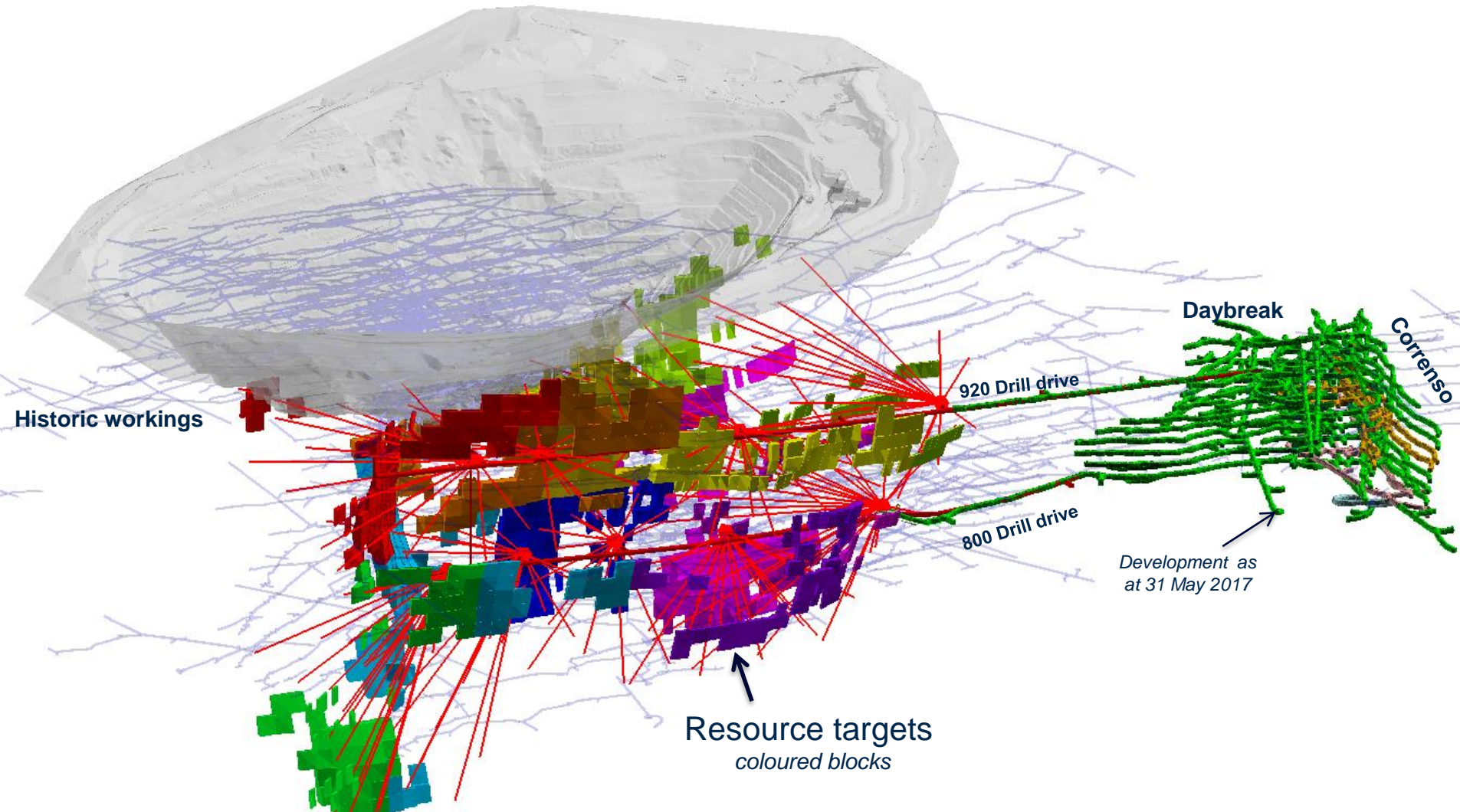
Oblique View Martha UG Project

PLANNED 2017 DRILLING FROM UNDERGROND

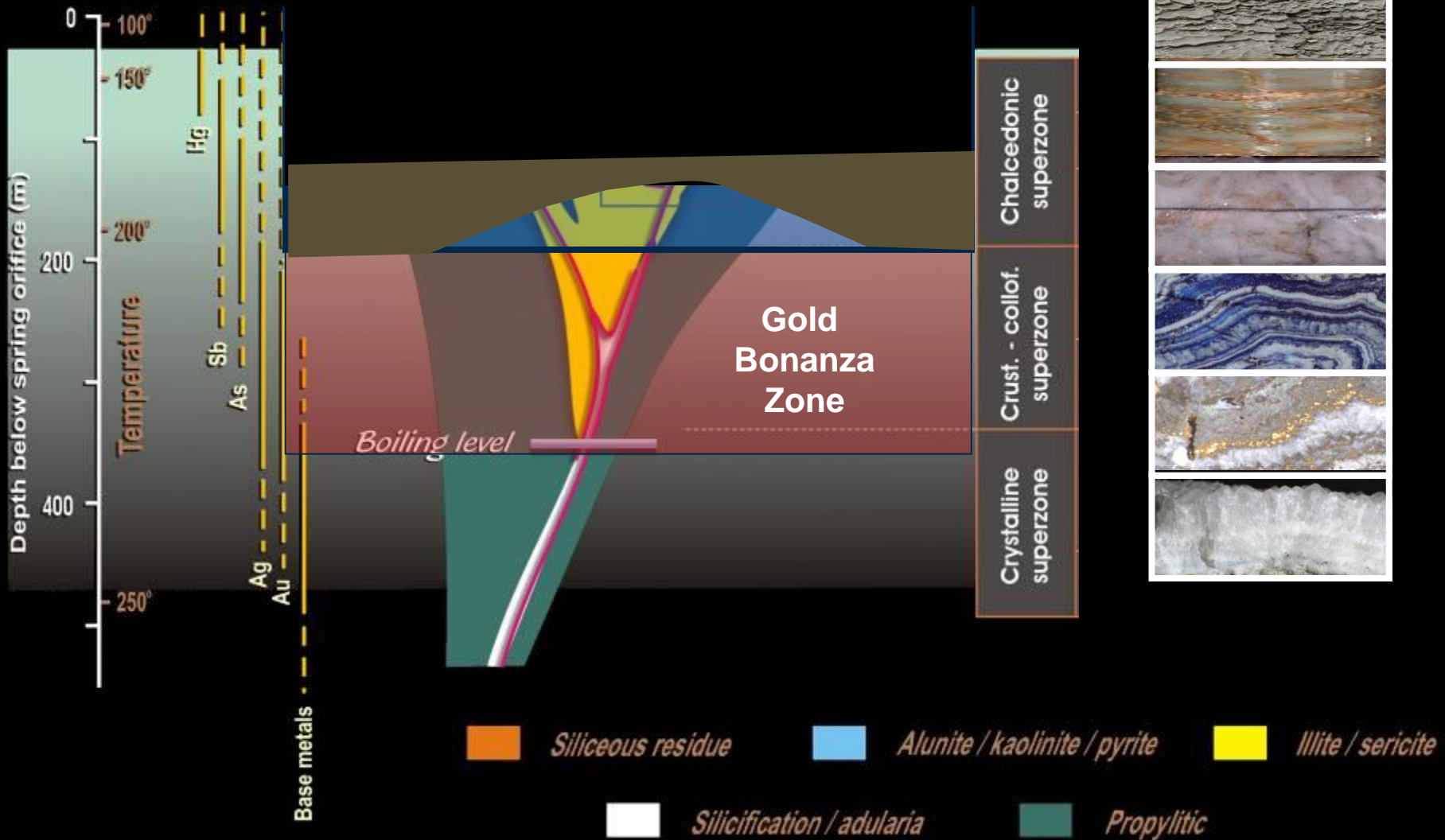


Oblique view Martha UG Project

PROPOSED INFERRED RESOURCE DRILLING 2017+

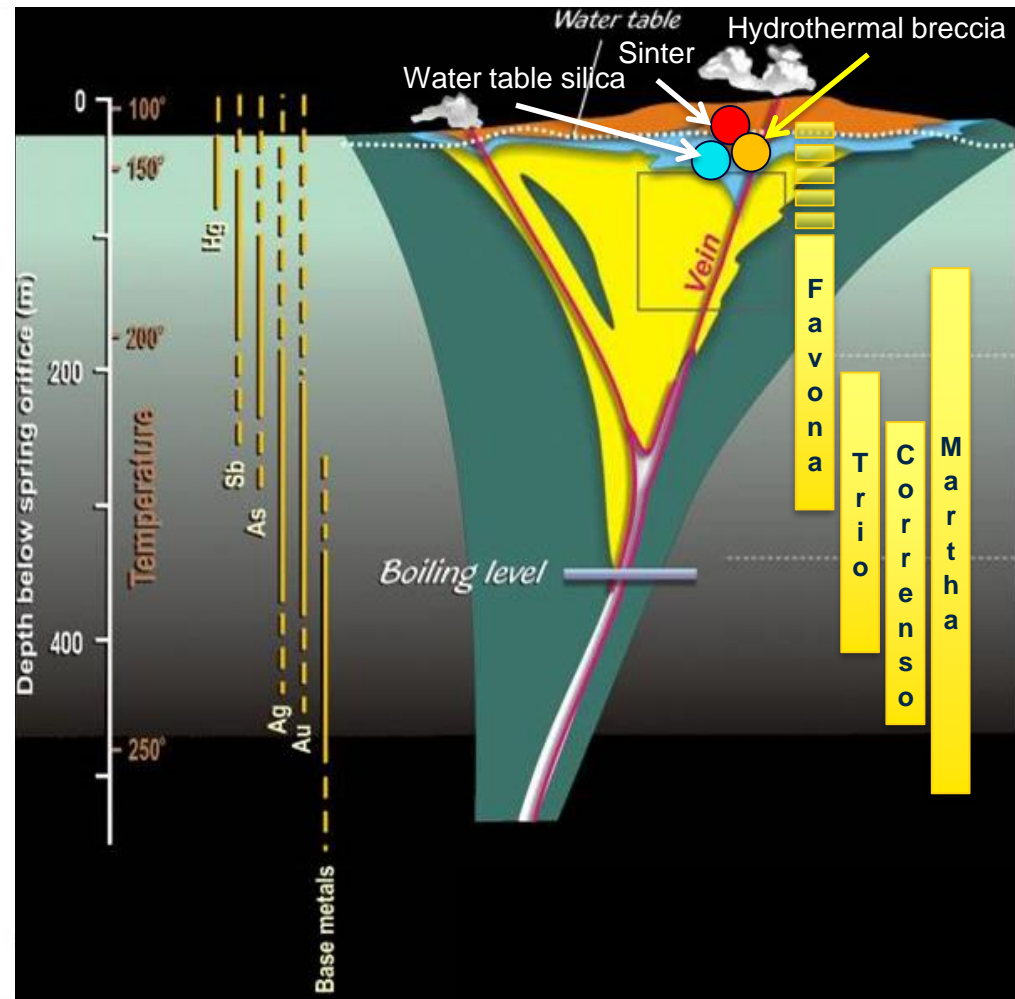
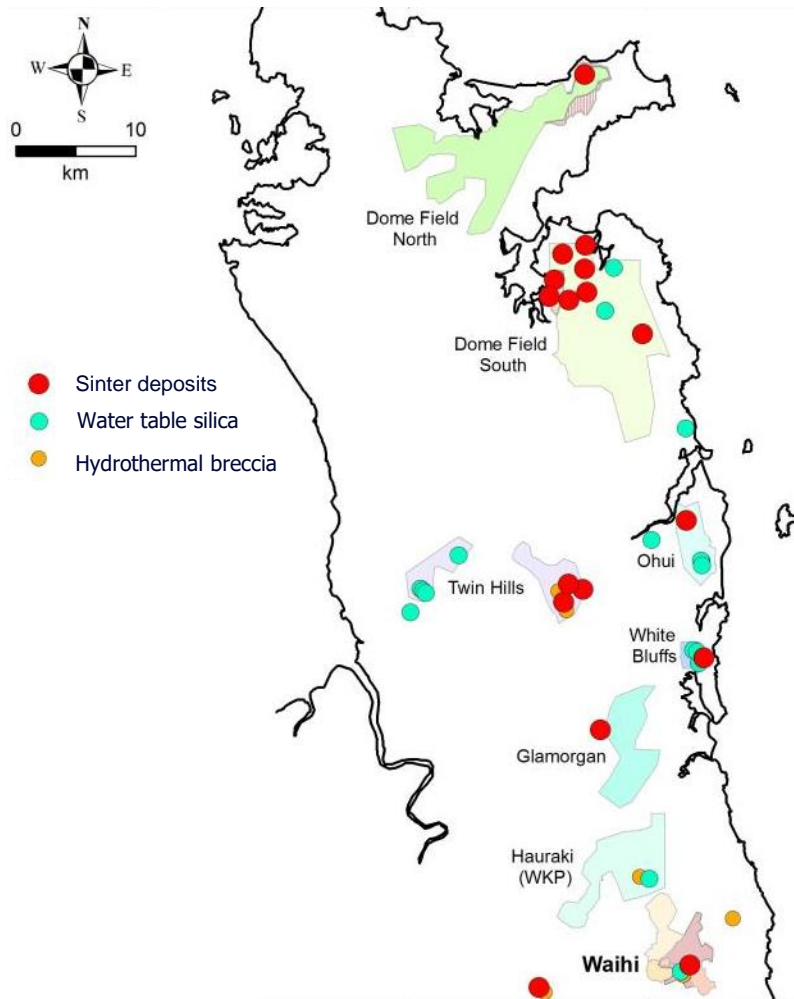


Geologic & Geochemical Models



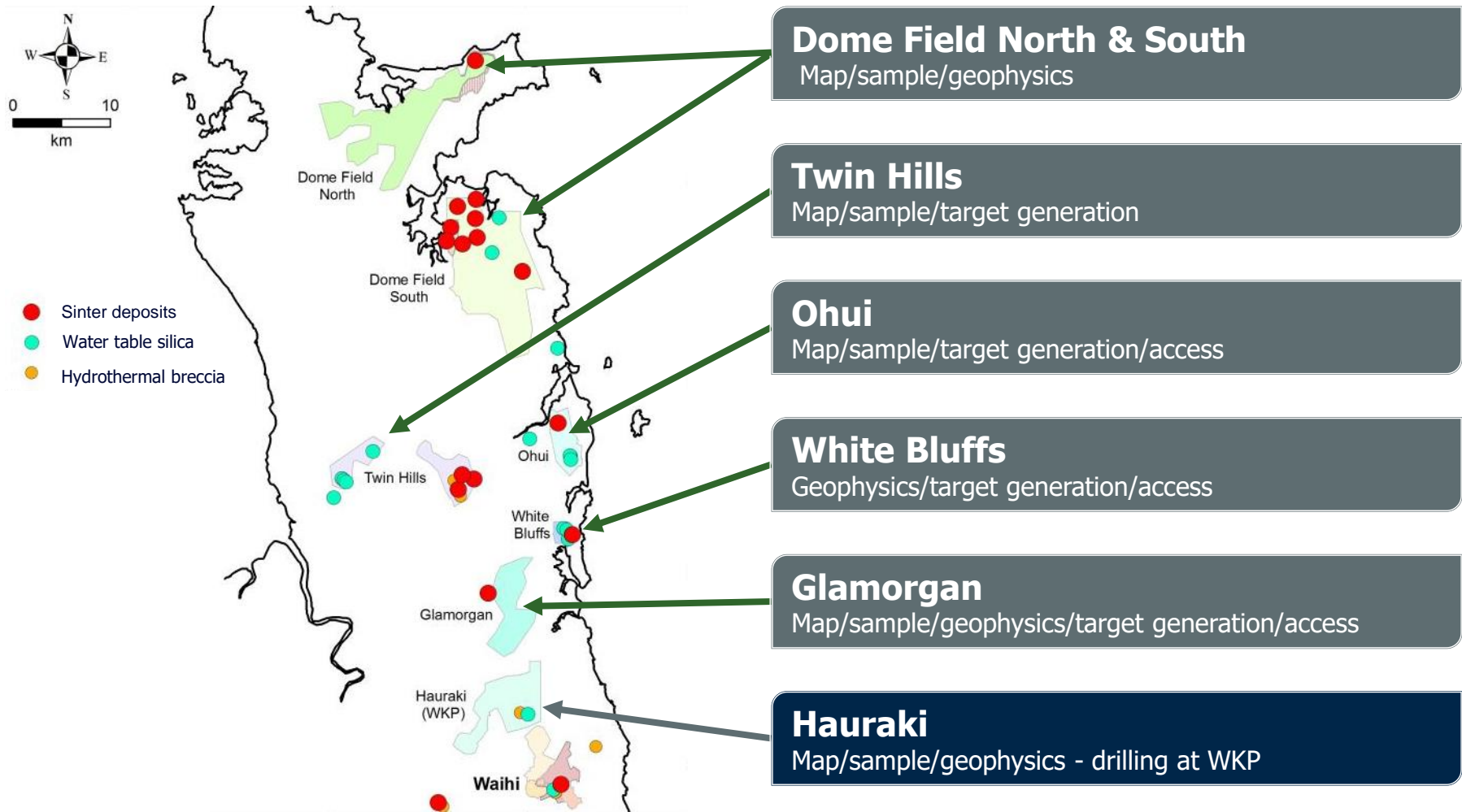
Regional Exploration

COROMANDEL TARGETS THAT DISPLAY POTENTIAL FOR MINERALISATION

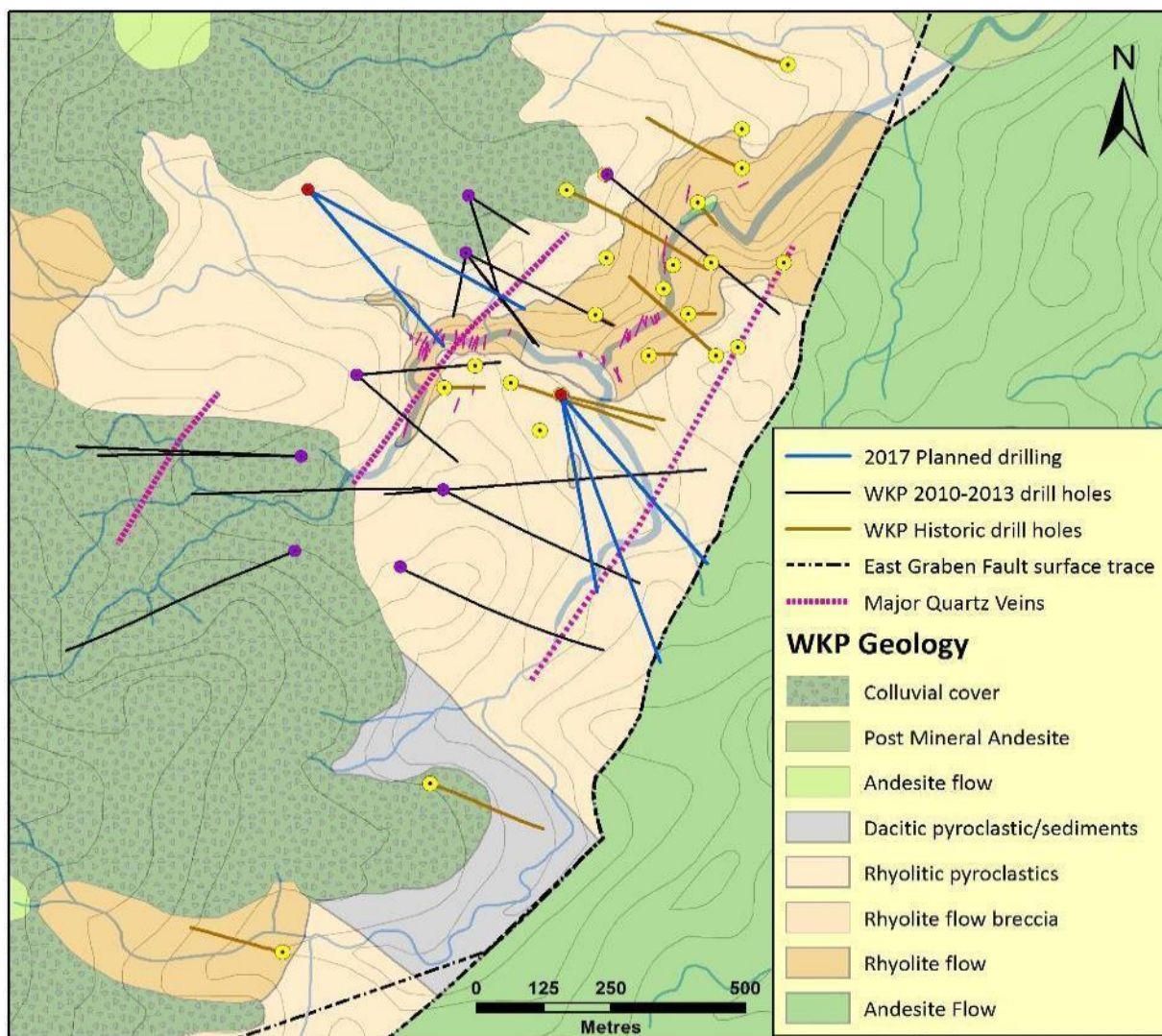


Regional Exploration

COROMANDEL GOLD DISTRICT HAS PRODUCED OVER 12 MOZ AU, 52 MOZ AG



Hauraki (WKP) Prospect



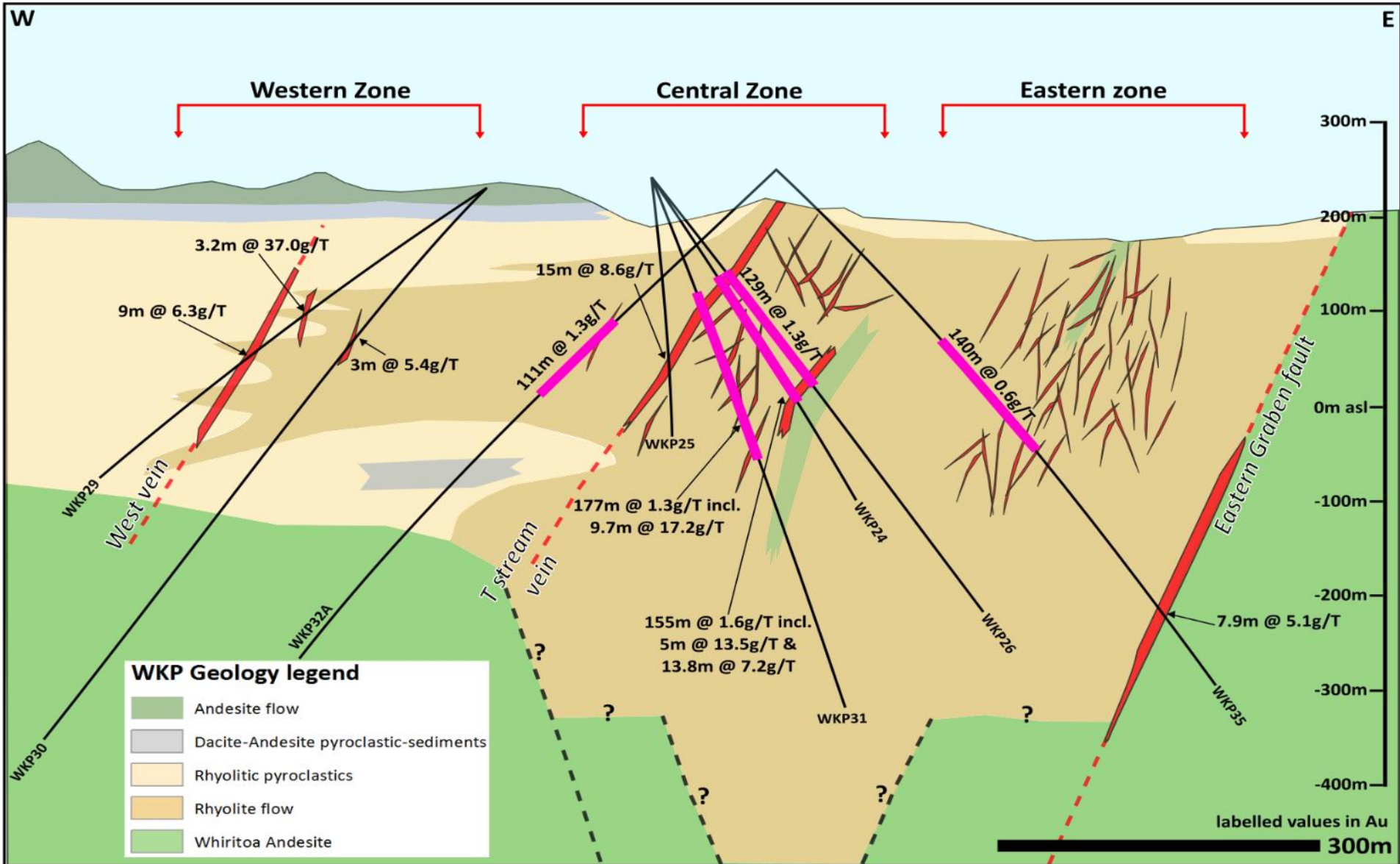
SIGNIFICANT HISTORICAL DRILL RESULTS ⁽¹⁾

Drill Hole	Length (m)	Gold Grade (g/t)
WKP24*	5.0	13.5
WKP24*	13.8	7.2
WKP25*	15.0	8.6
WKP26	1.0	19.1
WKP26	0.8	24.5
WKP26	1.0	17.5
WKP27	1.4	30.7
WKP29*	14.0	9.1
WKP29*	10.2	5.9
WKP30	1.0	13.7
WKP31*	9.7	17.2
WKP32A*	1.0	61.3
WKP32A	1.2	20.3
WKP32A	2.5	9.8
WKP32A	1.0	16.7
WKP33*	8.2	6.6
WKP33	2.2	12.1
WKP35	1.1	20.1
WKP35	7.9	5.1
WKP38	0.5	26.4
WKP38	1.5	20.9

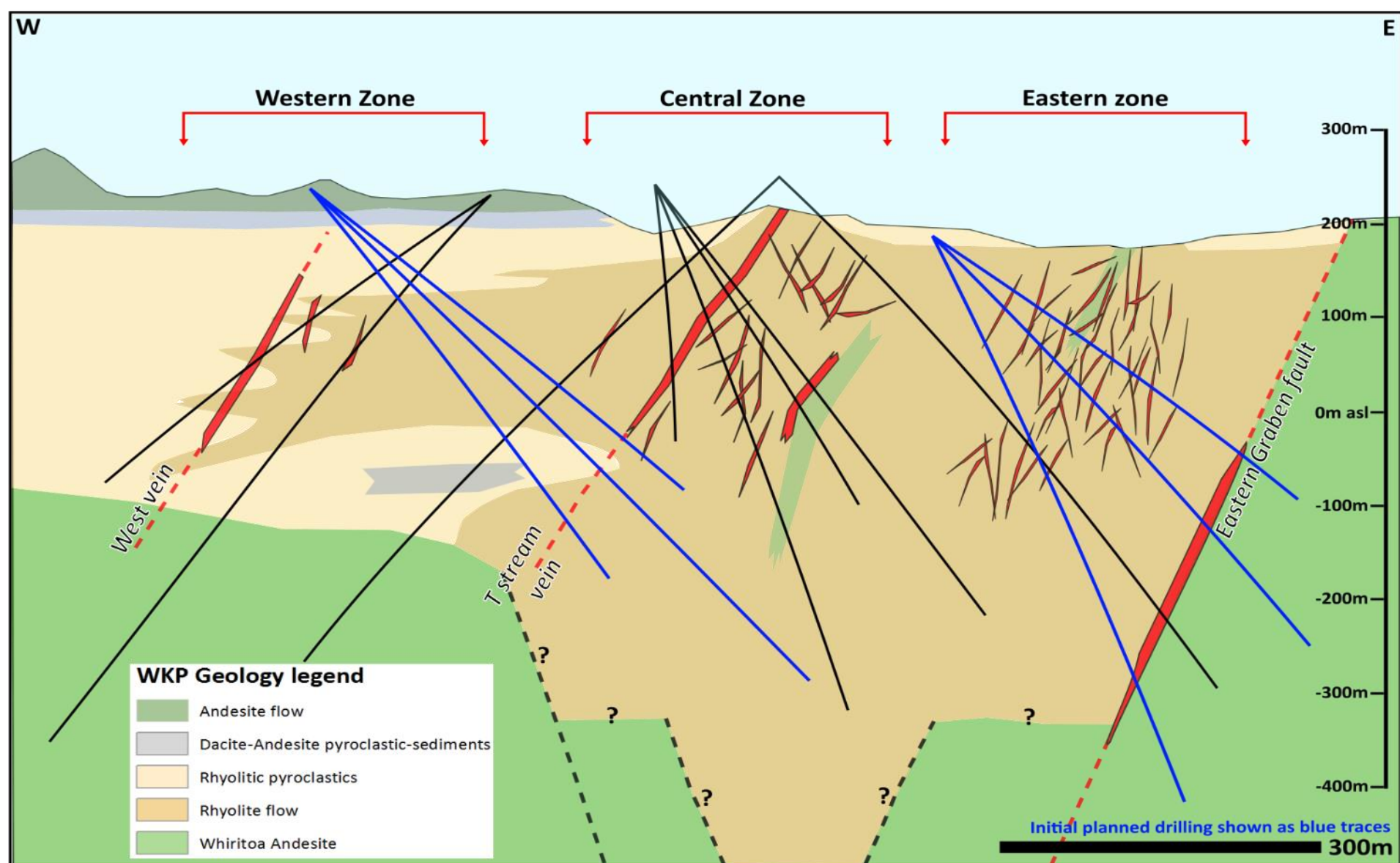
* >50 gm-m intercepts

1. Source XXXX

WKP – Previous Drilling



WKP – Proposed Drilling





SUSTAINABILITY



Sound Environmental Management

AN UNWAVERING COMMITMENT TO THE ENVIRONMENT TODAY, FOR TOMORROW

Farming



- Management of neighbouring farms

Native Fauna



- Monitoring of local wildlife

Rehabilitation



- Restoring lands with native flora

Water



- Numerous river monitoring sites

Dust and Noise



- Monitoring of noise, dust and blast vibration

Heritage



- Protection of significant sites

WAIHI OPERATION: footprint of 318 hectares, with 231 hectares rehabilitated authorized by comprehensive suite of permits.

MONITORING AND REPORTING REQUIREMENTS

- TSF structural integrity
- Particulate matter and air quality
- Discharge water / ground water / surface water quality
- TSF geochemistry
- Wildlife and biological monitoring
- Noise and vibration monitoring
- Pit lake formation and discharge
- River water quality and biodiversity monitoring
- Rehabilitation and closure plans
- Heritage site monitoring and protection

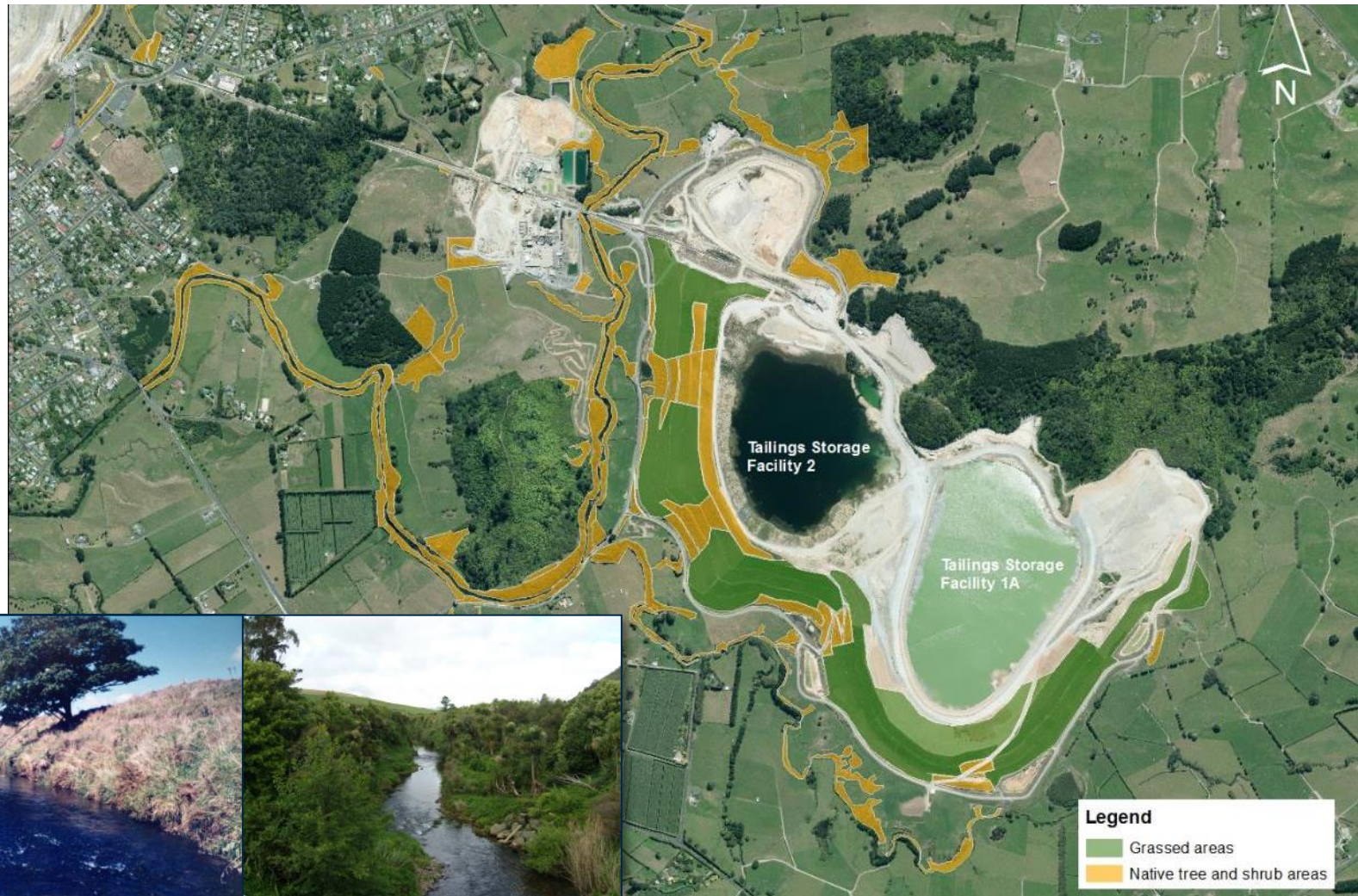
AQUATIC MONITORING WITHIN THE OHINEMURI RIVE

- Six monthly biological surveys
- Measure fish, periphyton, macro and micro-invertebrates, macrophytes
- Sediment samples taken
- Complemented by water quality monitoring



Rehabilitation Activities

CONTINUOUS REHABILITATION TO IMPROVE BIODIVERSITY

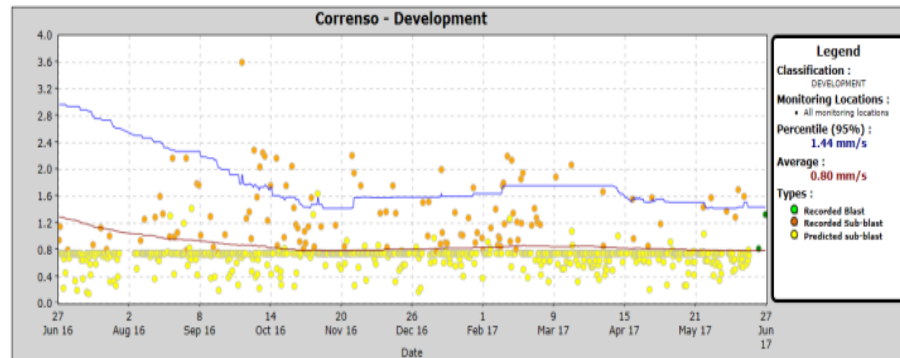


SIGNIFICANT NETWORK OF VIBRATION MONITORS

- 22 permanent monitors and 2 roving monitors
- Automated reporting system visible to community via the internet



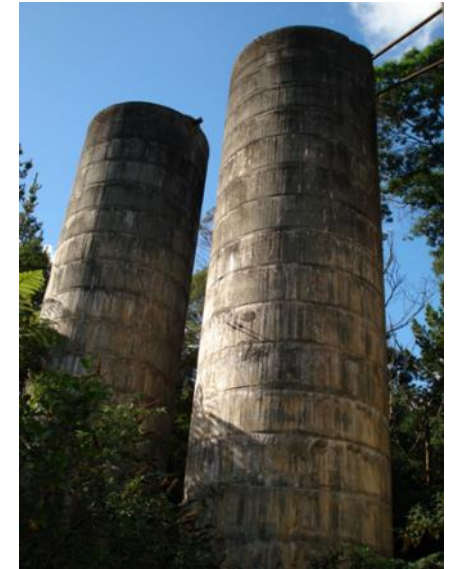
Vibration Monitors - Waihi



PRESERVATION OF SIGNIFICANT HERITAGE AREAS

COMMITMENT TO HERITAGE: We have committed to preserve the Cornish Pumphouse, Union Hill, Grand Junction and other heritage areas

- Vibration undertaken
- Condition surveys undertaken
- Restoration of refinery building undertaken
- Prepared Union Hill Management Plan for community



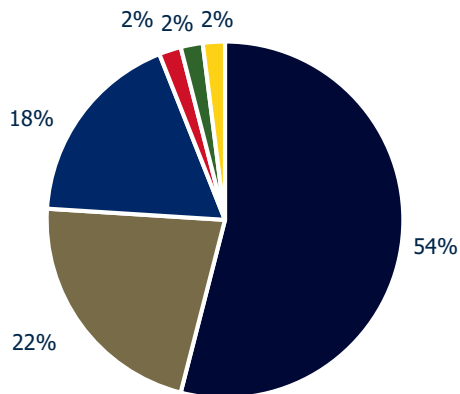
HIGH ENGAGEMENT AND MONITORING DUE TO PROXIMITY OF MINING ACTIVITY

FUTURE PLANNING: 64% of residents surveyed believe OceanaGold plans well for the future of Waihi

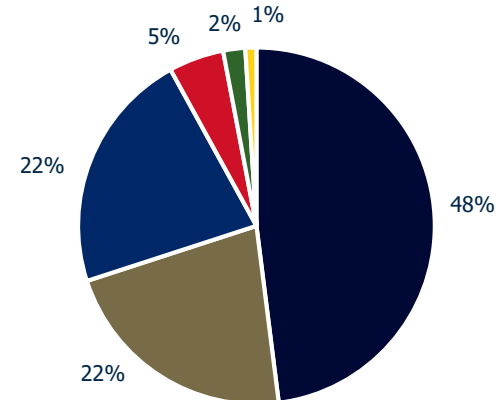
ECONOMIC BENIFITS: ~90% of residents and businesses surveyed recognise the positive impact the mine has on employment opportunities and the broader economy within Waihi

POSITIVE SENTIMENT: 92% of residents and 96% of businesses surveyed were in favour or neutral about the Waihi operation.

Businesses opinions of Correnso Underground Mine



Residents opinions of Correnso Underground Mine



■ Strongly in favour
 ■ Moderately in favour
 ■ Neutral
■ Strongly not in favour
 ■ A little in favour
 ■ Moderately not in favour



www.oceanagold.com

Innovation • Performance • Growth



OCEANAGOLD