

ASX RELEASE // 21.08.17

Xped Limited



Investor Presentation

Xped Limited (**ASX: XPE**) (“**Xped**” or “**the Company**”) is pleased to release the attached presentation being used for investor meetings.

By Order of The Board

Xped Limited



ABOUT XPED

Xped is an Australian Internet of Things (“IoT”) technology business. Xped has developed revolutionary and patent-protected technology that allows any consumer, regardless of their technical capability, to connect, monitor and control devices and appliances found in our everyday environment. It’s as simple as two people shaking hands. By enabling the Internet of Things, Xped’s ADRC platform will bring benefit to Manufacturers, Retailers, Service Providers, and Consumers.

At Xped, we’re **Making Technology Easy Again**

FOR MORE INFORMATION:



Contact Xped Limited

ABN 89 122 203 196
Level 6, 412 Collins Street
Melbourne VIC 3000

T 03 9642 0655
F 03 9642 5177
E info@xped.com
www.xped.com

CORPORATE ENQUIRIES:

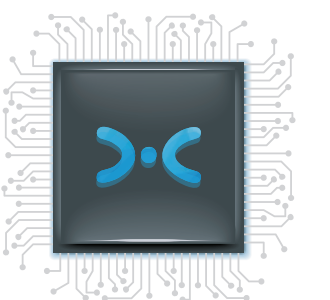
Cameron Low
T 03 9225 5474
E ir@xped.com



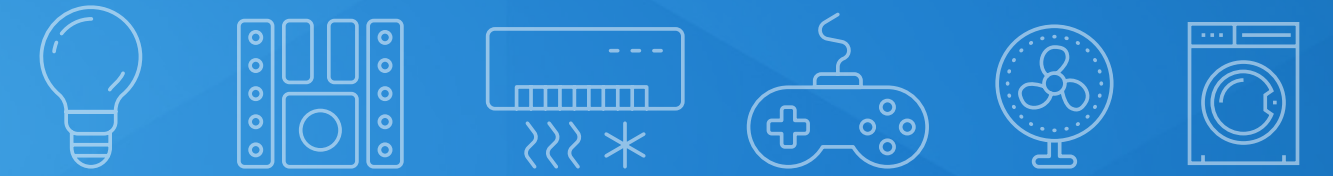
Xped Investor Presentation

XPED INVESTOR PRESENTATION
VERSION 1.0 // AUGUST 2017

xped



WHO IS XPED?



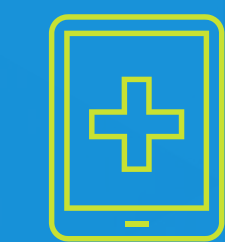
Xped is a vertically integrated technology and solutions provider that is focused on Internet of Things (IoT) Infrastructure for 3 core segments:



Smart Homes and Consumer Solutions

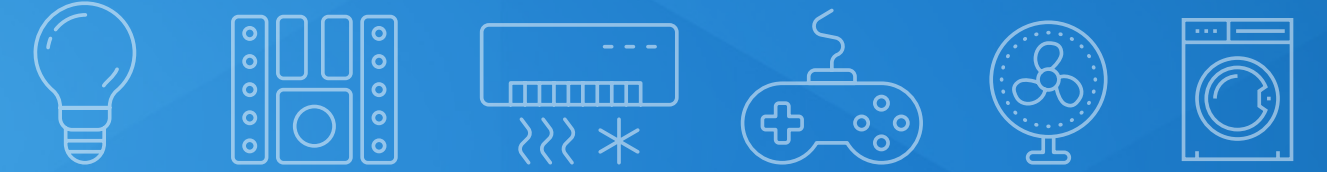


Smart Buildings - Commercial & Industrial Solutions

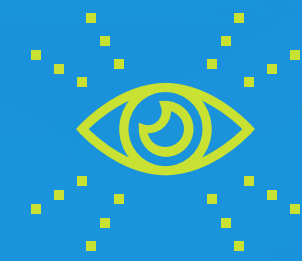


Professional Healthcare Solutions

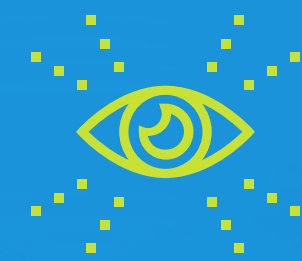
OUR VISION



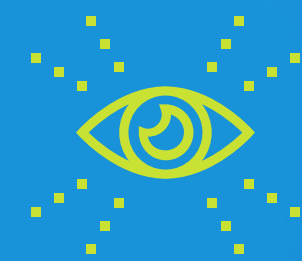
Accelerate IoT deployment through simple, innovative, and user experience driven solutions.



Work with device manufacturers, service providers and retailers to deliver compelling user experiences based on Xped technologies.



Monetize our technology via licensing, revenue share and API metering.



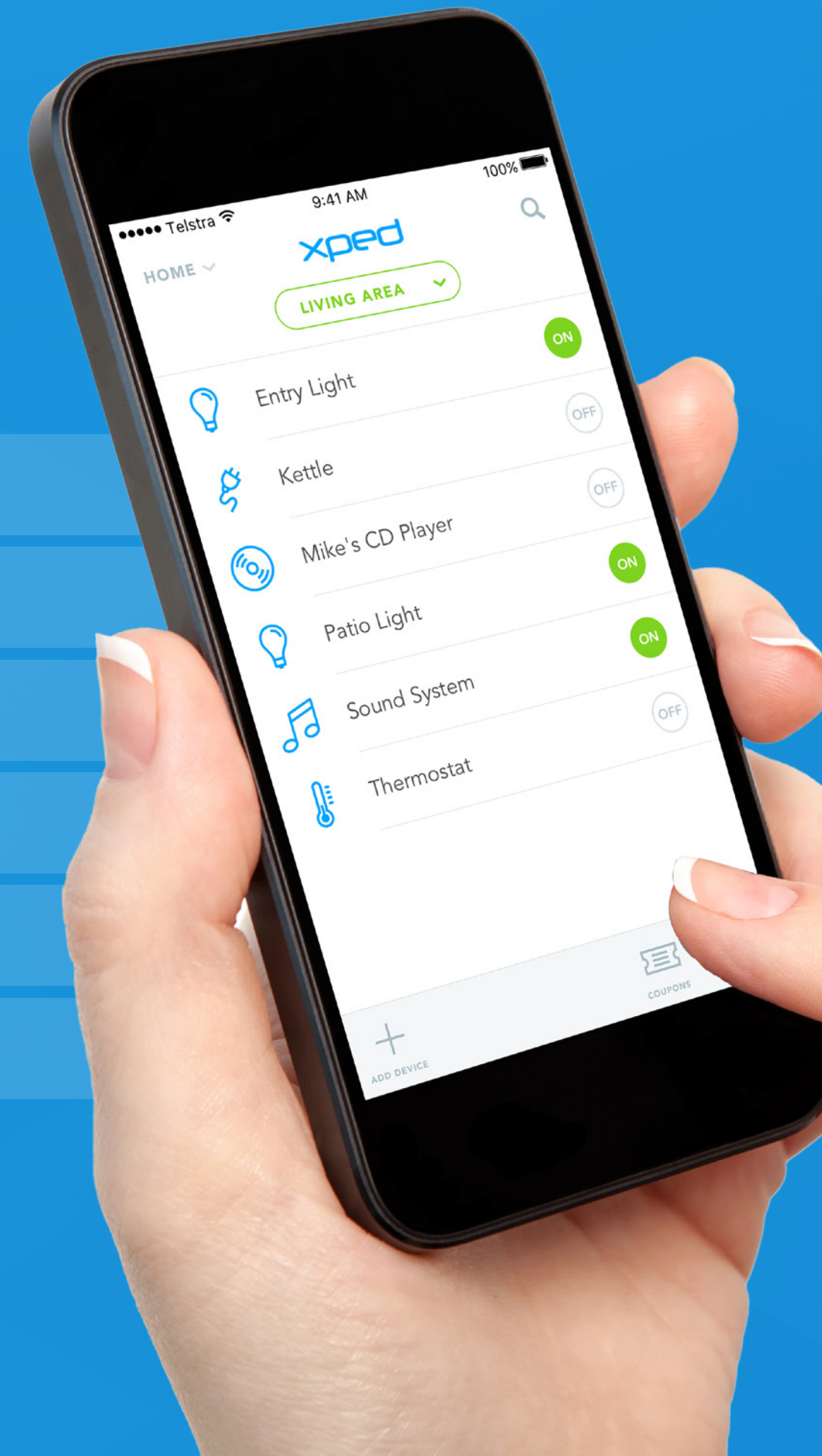
Seamlessly, safely and securely move data across our platform.

XPED TECHNOLOGY ADVANTAGE

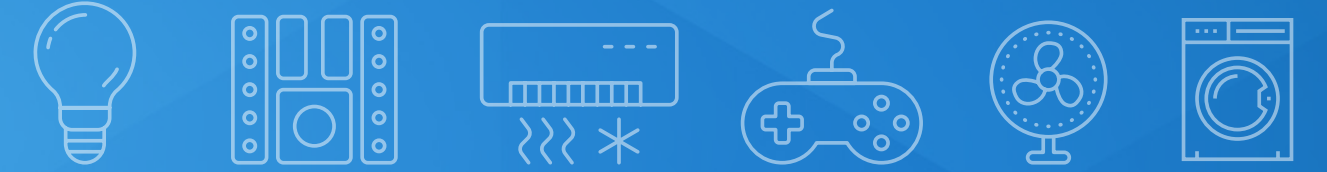


The Xped App:

- > Beautiful Simple User Interface
- > In home and out of home control
- > Easy onboarding of devices
- > One Tap and Pair
- > Universal device control and monitoring
- > Easy customisation (white label)



XPED TECHNOLOGY ADVANTAGE



Interoperability:

Xped's solution can support all major communication protocols:

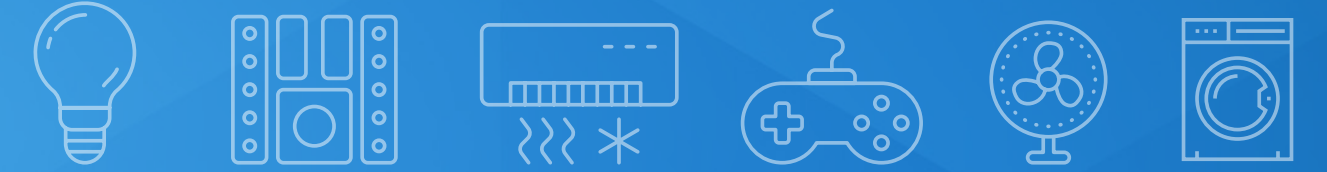
- > WiFi & Bluetooth
- > Zigbee & Z-Wave
- > Near Field Communication (NFC)
- > DiscoverBus
- > IoTivity



Large catalogue of Xped Smart Devices are available:

- > Indoor & Outdoor Cameras
- > Lighting
- > Smart Switches & Plugs
- > Environmental & Motion Sensors
- > Door Locks & Bells

XPED TECHNOLOGY ADVANTAGE



Interoperability:

Future integration with voice services and smart speakers:

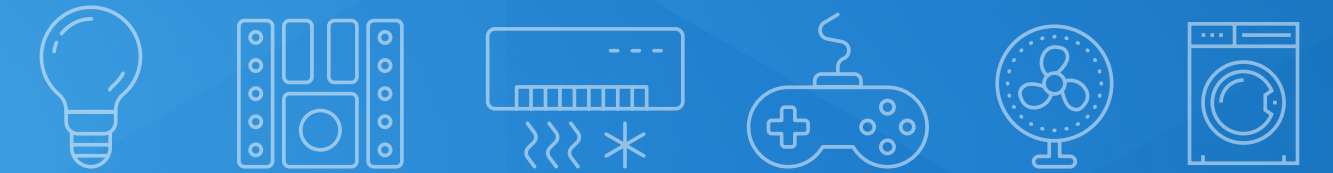
- > Google Home
- > Amazon Alexa
- > Microsoft Cortana



Support for Tier 1 third party devices:

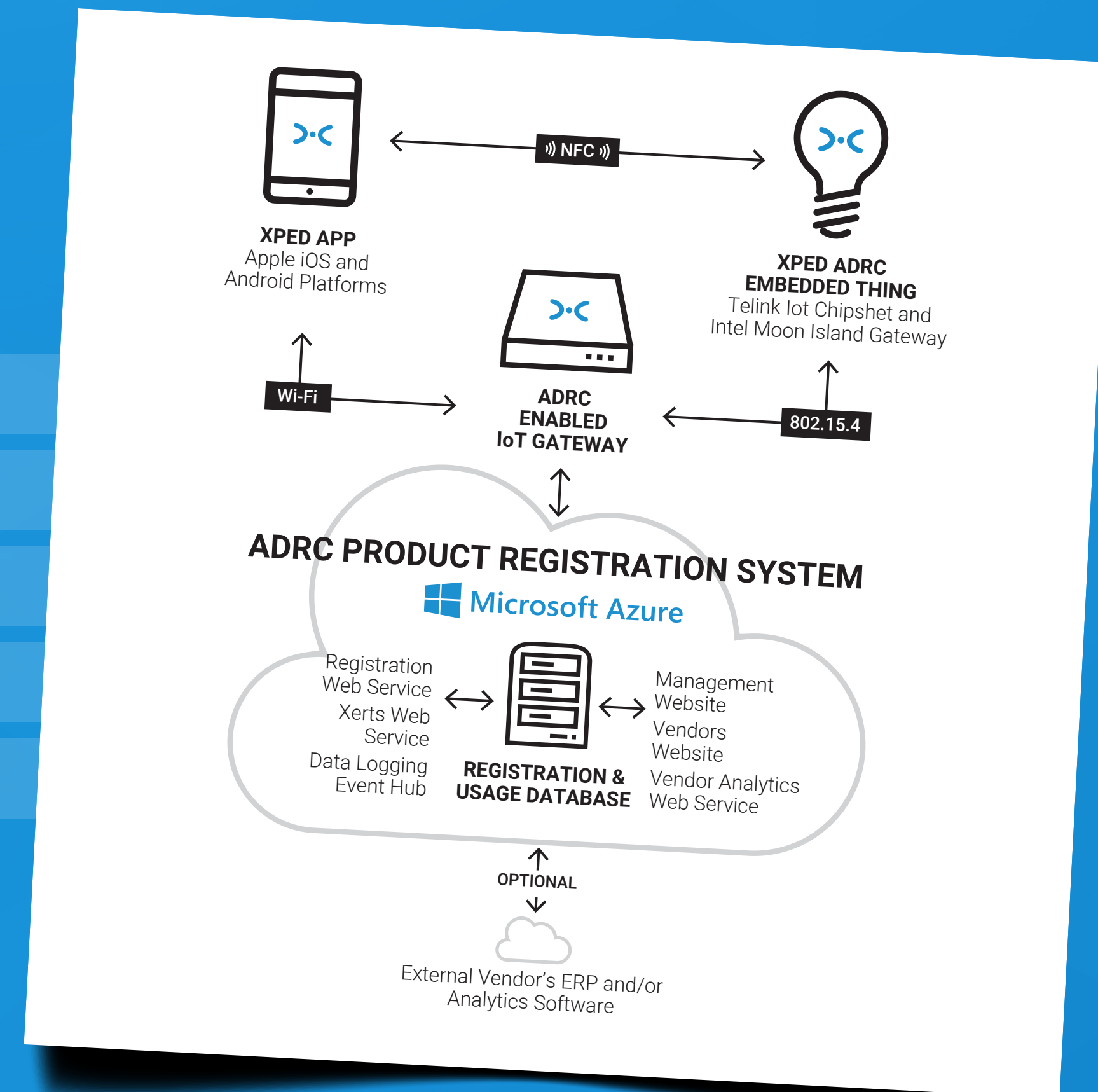
- > Samsung Locks
- > Hue Lights
- > Netatmo Cameras
- > Yale Locks

XPED TECHNOLOGY ADVANTAGE

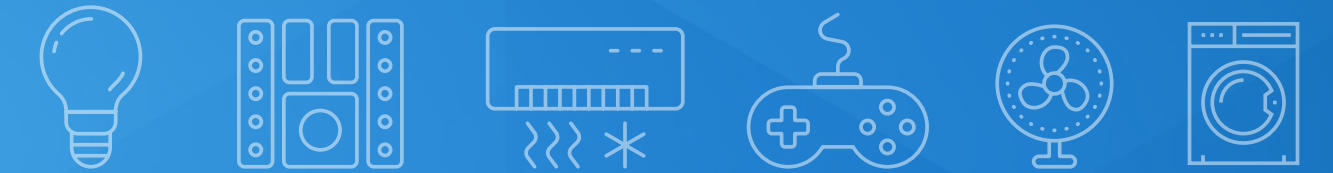


Our Cloud Services (XIP):

- > Highly scalable and secure Cloud Services
- > Built on Microsoft Azure Platform
- > Customisable to meet unique customer demands
- > Data capture and analysis
- > Advanced technology that hosts third party systems



XPED TECHNOLOGY ADVANTAGE



ADRC & DiscoverBus:

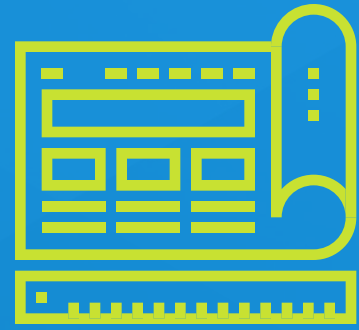
Xped has proprietary hardware solutions in wireless and wired connectivity options designed for commercial and industrial use.

HW Components:

- > Gateway
- > Discover Hub
- > Nodes
- > Sub-Nodes



XPED OFFER SOLUTIONS FOR:



Original Equipment
Manufacturers (OEMs)



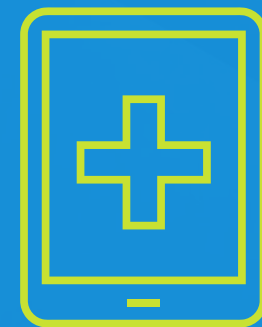
Retailers



Builders



Service
Providers

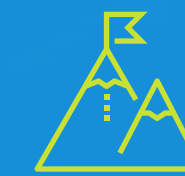


Healthcare
Providers



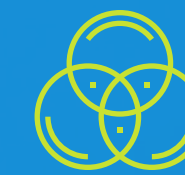
Property
Management

COMPETITIVE ADVANTAGE

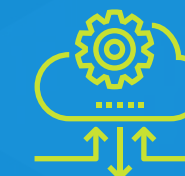


IoT architecture:

The highest level of
interoperability

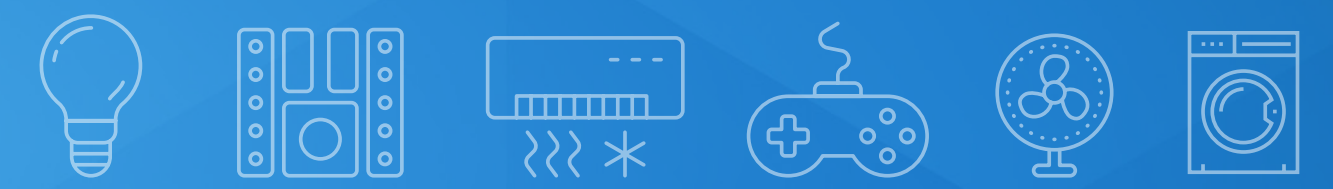


Unique UI/UX: Simple
to learn and easy to use

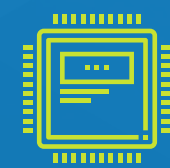


Cloud: Novel cloud /
client architecture for
data monetization

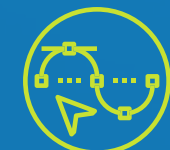
CHANNEL PARTNERS



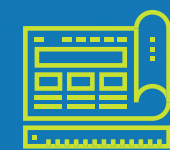
Channel Partners



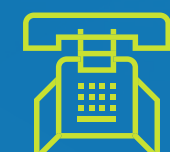
SILICON VENDORS



ODM'S



OEM'S



TELCOS / MSOS



INSTALLER NETWORKS



PROPERTY MANAGEMENT

Associated Partners



OPEN CONNECTIVITY FOUNDATION™



Microsoft



Shenzhen Lenze Technology Co.,LTD
Complex Semiconductor (HK) Co.,LTD



General member of Intel®
Internet of Things Solutions Alliance



Target Partners

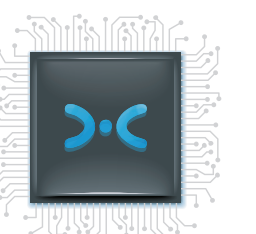


ESPRESSIF

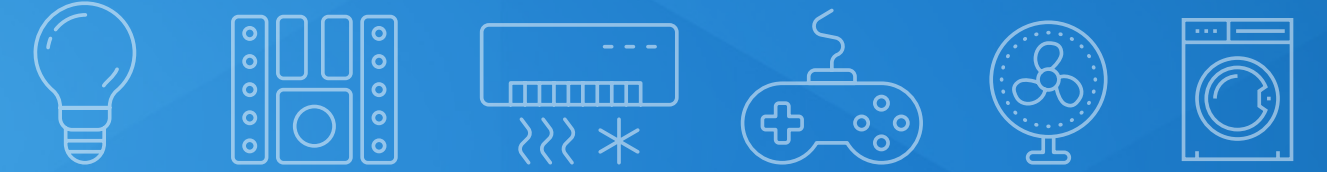


hansen yuncken

Disclaimer: Companies and logos above are target partners only and are not necessarily indicative of any existing partnership.



ACCELERATED GROWTH STRATEGY



Accelerated growth to be achieved by joint venture partnerships and acquisitions of well established companies that will allow us to release our platform, and expand our brand and profile in the market place to provide an end to end solution for all smart devices.



We acquired JCT Healthcare to accelerate access to Healthcare channel and Jemsoft to incorporate Computer Vision and AI into future versions of Xped IoT Platform.



Partnering with industry leaders (Intel, Telink, Complex Semiconductor) to enhance their products and services with Xped's Infrastructure Platform (XIP).

COMMERCIAL PARTNERS



Telink:

Xped has a collaborative agreement to market Xped platform and licensing of ADRC Proxy to Telink customers. Dr. Wenjun Sheng is appointed on the Xped board.

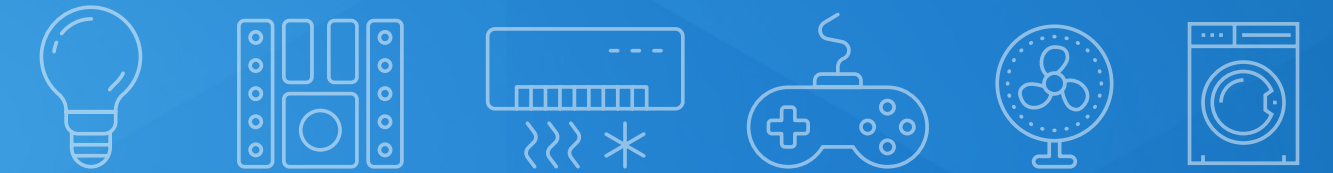


About Telink: Telink is a cost competitive fabless IC design house that develops highly integrated low power radio-frequency and mixed signal system chips for IoT applications.

Current technology: 2.4Ghz RF SoCs
- Bluetooth, Zigbee, Thread, 6LoWPAN, Homekit, Analog ICs - resistive/capacitive/electromagnetic touch control

Current partners: GE, Intel, Apple, Skyworth, MediaTek, Lenze

COMMERCIAL PARTNERS



Lenze:

Lenze sells under their own brands and also produce OEM products for worldwide distribution including The Walt Disney Company. Total Lenze sales exceeded 100 million devices in 2016.



Shenzhen Lenze Technology Co.,LTD
Complex Semiconductor (HK) Co.,LTD

License ADRC technology and Xped Infrastructure Platform

Xped to develop Apps for both Lenze and Lenze OEMs

Forecast 200 million device sales in 2017

Telink partner

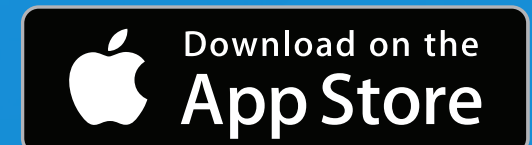
Lenze consumer devices include Smart Locks, Smart Lights, Bluetooth Car Audio and Fitness Equipment

COMMERCIAL PARTNERS

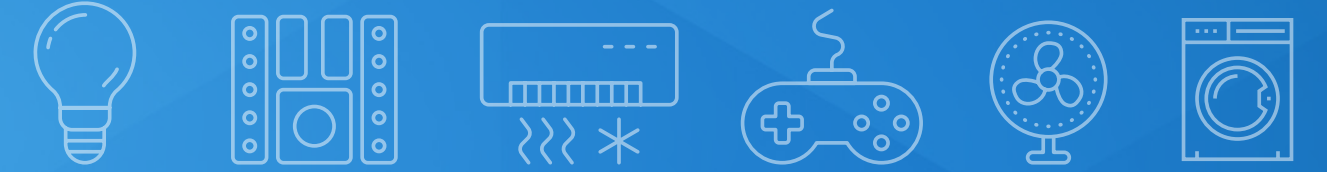


Lenze - IPark App:

- > Xped's first App developed for Lenze
- > Based on Xped's App Framework
- > Developed for both Google Play and the App Store
- > Xped receives payment for every active download
- > The IPark Smart USB Leads are in production for global distribution



COMMERCIAL PARTNERS



Solekai Systems:

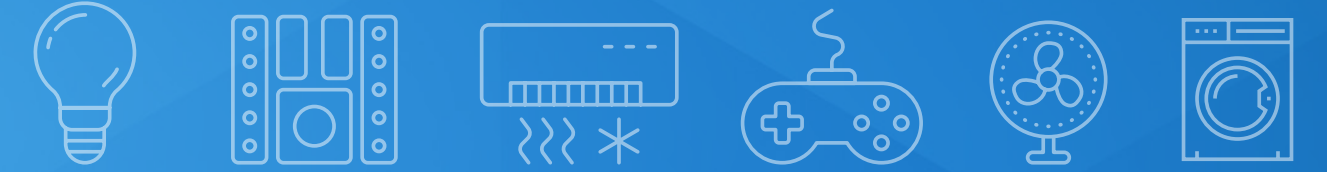
Xped and Solekai are working collaboratively on integrating Xped's technologies into their solutions, extending the Xped reach into their customer base including major STB, Gateway, and Media Device manufacturers.

About Solekai: Solekai Systems is a US company based in San Diego.

Current technology: Specialise in Digital Media, Smart Grid and Advanced Metering Infrastructure, Connected Health and Internet of Things.

solekai

COMMERCIAL PARTNERS

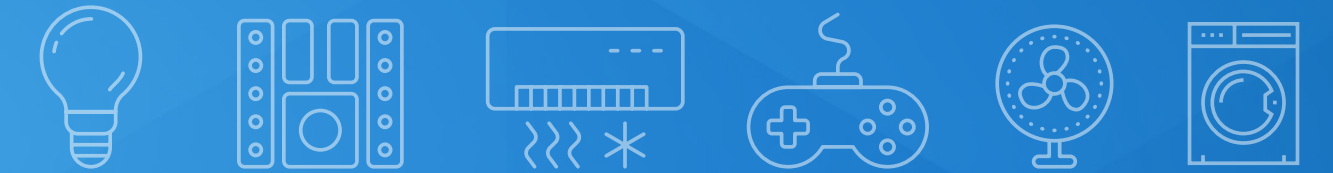


Existing MOUs:

Xped has entered into MOU with a number of significant OEMs and ODMs in China and Taiwan to potentially license our IoT Platform and white label our App.



POTENTIAL VALUE OF THE IoT



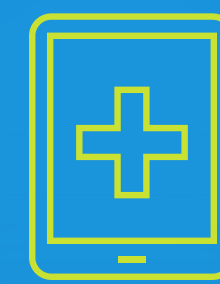
Xped Target Markets:



Smart Home &
Consumer Solutions

\$200B-\$350B

Xped



Professional
Healthcare Solutions

\$170B-\$1.6T

JCT Healthcare



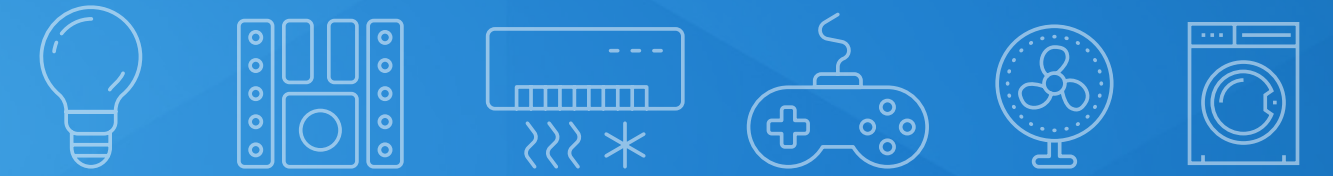
Smart Buildings -
Commercial/Industrial

\$70B-\$150B

Xped & Vital Xense

Source: 'The Internet of Things: Mapping the Value beyond the Hype', McKinsey Global Institute June 2015.

REVENUE OPPORTUNITIES



Smart Home & Consumer Solutions:

Smart Home:

- > Xped Branded App
- > Cloud Services and APIs
- > Catalogue of Products
- > Retail Starter Pack
- > Works with other brand Smart home products

Sales Channels:

- > Telcos
- > Channel Partners
- > Developers
- > Installers
- > Retail Chains
- > Online e-Commerce

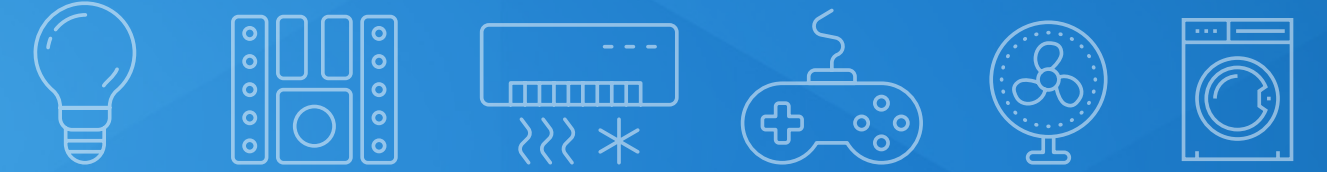
Geographic Markets:

- > Malaysia
- > Hong Kong
- > USA
- > China
- > India
- > Australia

Revenue Streams:

- > Hardware sales
- > Licensing
- > Professional Services
- > API Metering
- > Recurring revenue

REVENUE OPPORTUNITIES



Custom IoT App Development:

App Development:

- > White Labelled Apps
- > Rapid development using Xped App Framework, Cloud Services and API

Sales Channels:

- > Silicon Vendors
- > ODMs
- > OEMs

Geographic Markets:

- > Global (through volume manufacturers)

Revenue Streams:

- > Professional services
- > Royalty payments
- > Licensing payments
- > API Metering

REVENUE OPPORTUNITIES



Smart Buildings Solutions:

Smart Buildings:

- > Proprietary range of IoT devices
- > App (Xped or White Labelled)
- > Cloud Services
- > Patented technology
- > Wireless & Wired Solutions
- > One Tap and One-Click Onboarding
- > Commercial Gateway
- > Energy Management

Sales Channels:

- > Vital Xense
- > Channel Partners
- > Developers

Geographic Markets:

- > Singapore
- > Asia
- > USA
- > Australia

Revenue Streams:

- > Hardware sales
- > Licensing
- > Professional Services
- > API Metering
- > Recurring revenue

REVENUE OPPORTUNITIES



JCT Healthcare:

JCT Healthcare is a quality provider of solutions to the Healthcare sector with products tailored for Hospitals, Aged Care, Independant Living and Disability Care.

Traditional Revenue Sources:

- > Nurse Call Hardware
- > Nurse Call Software (installed on-site)
- > Hospital facility devices (fixed and wearable)

Target Markets:

- > Hospitals
- > Nursing Homes

Geographic Markets:

- > Australia

REVENUE OPPORTUNITIES



JCT Healthcare:

Since the acquisition (July 2016), Xped has invested significant capital into JCT Healthcare to develop market leading Smart Assistive Technology Solutions.

New Revenue Sources:

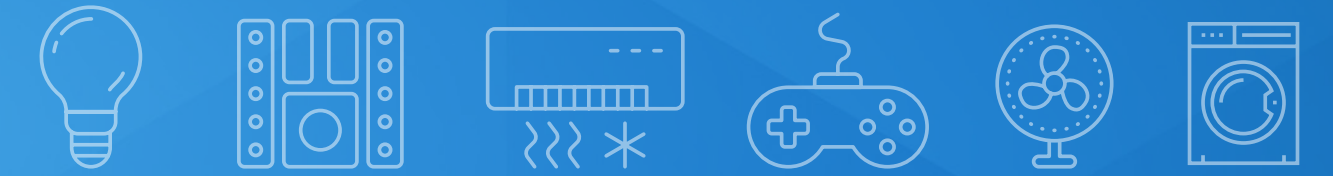
- > Smart Assistive Technology Solutions
- > Nurse Call Software (Cloud SAAS)
- > Next Generation Carer App (White labelled)
- > AI Computer Vision based fall detection
- > Professional Smart Home Integration with Professional Carer Support Software
- > Beacon Tracking solution

Target Markets:

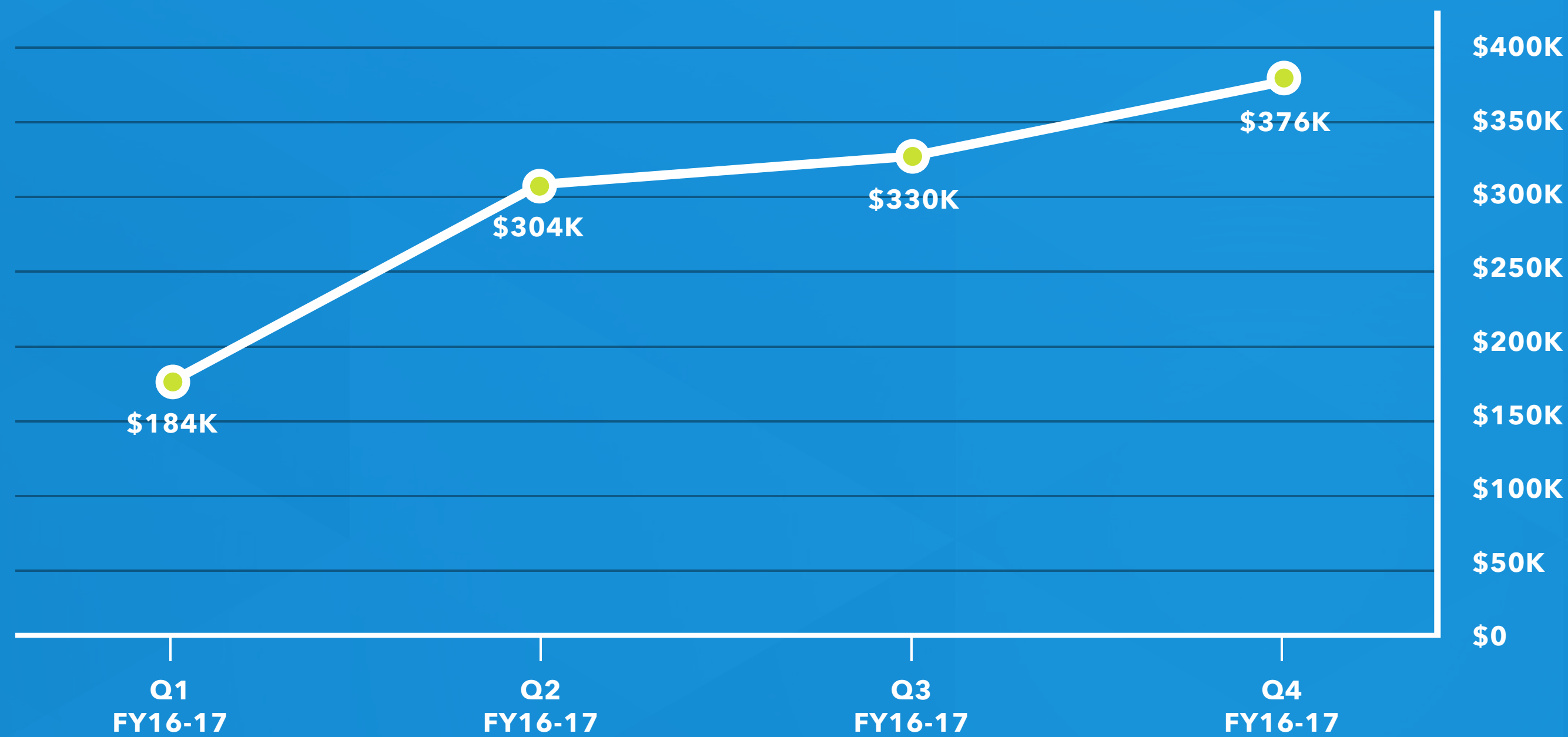
- > Independent Living
- > Nursing Homes
- > Aged Care
- > Disability Care

Geographic Markets:

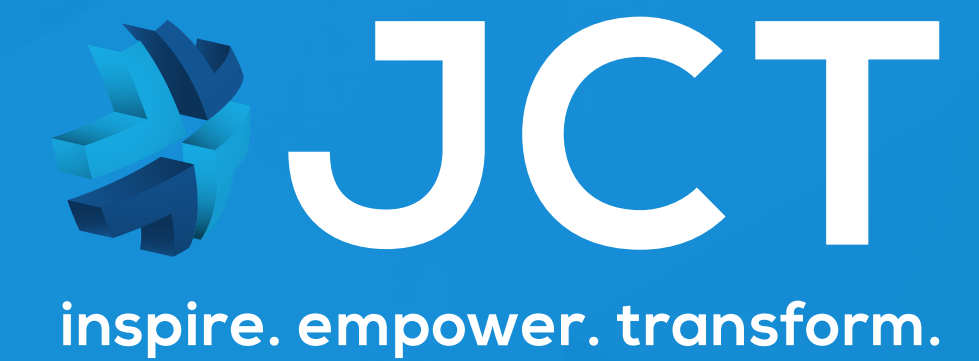
- > Australia (2017/18)
- > USA (2018/19)
- > Asia (2018/19)



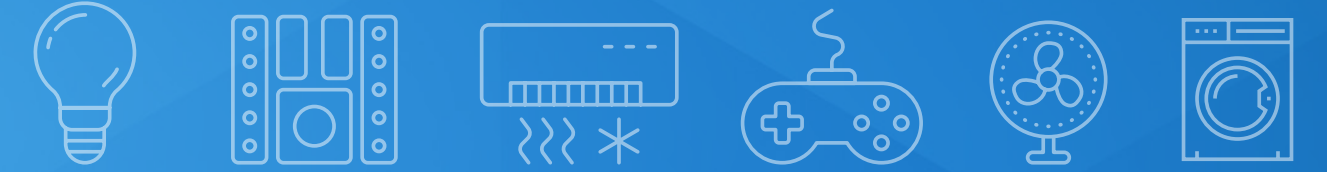
Revenue FY16-17



Total Revenue:
\$1.194 Million

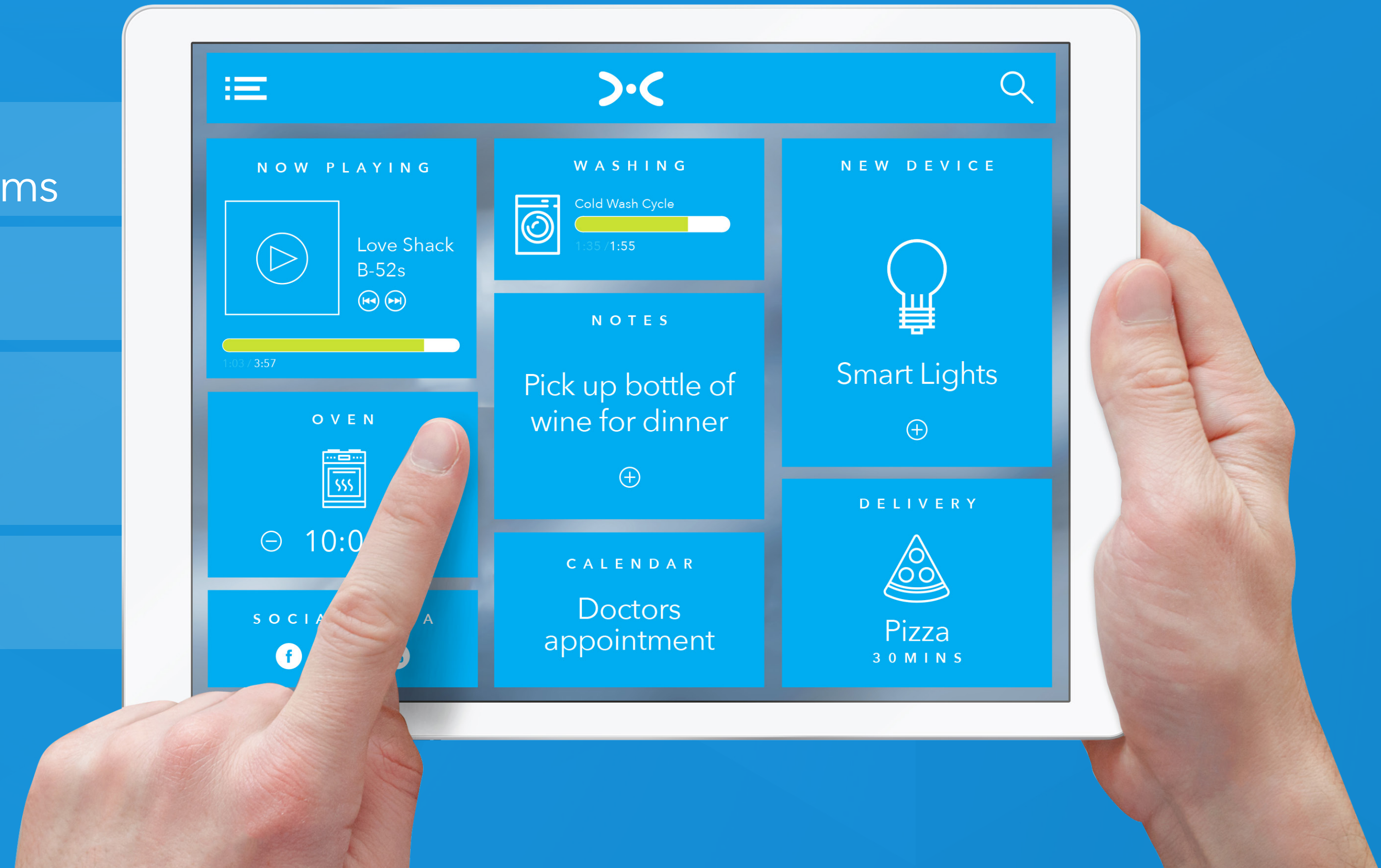


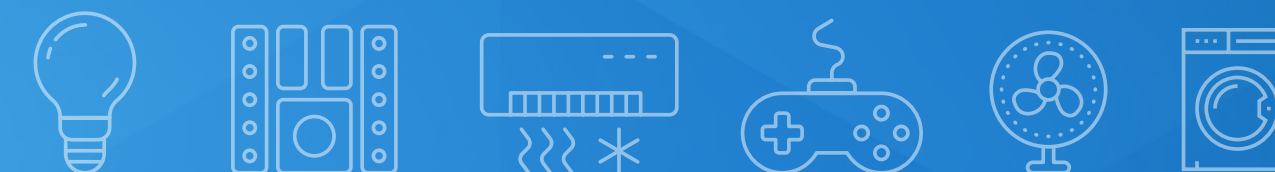
REVENUE OPPORTUNITIES



Development Roadmap:

- > Q4 2017: Xerts - leverage targeted promotions, in-App coupon or loyalty programs
- > Q4 2017: Computer vision and AI learning integrated into Xped platform
- > Q1 2018: Homepage for Life App - Dashboard aggregating all Smart Home and 3rd party services
- > Q2 2018: Xped Home Healthcare Solutions





Board of Directors:

Athan Lekkas

Executive Chairman /
Chief Executive Officer

Athan has participated in a broad range of business and corporate advisory transactions, specialising in the restructure and recapitalisation of various companies through his institutional funding contacts in Asia and North America.

Athan has completed successful turn around projects in manufacturing, logistics and implemented successful operational changes restoring companies into profitability. He was instrumental in the structuring and funding of the Xped transaction.

Martin Despain

Managing Director

Martin's most recent role was General Manager, Smart Homes Division, Internet of Things Group at Intel Corporation head office developing and implementing Intel's IoT strategy and product offering for the home.

Martin's area of expertise includes product management, semiconductors and SoC's, embedded systems, start-ups, international sales and marketing, strategic partnerships and planning and visionary for the organisation.

Dr Wenjun Sheng

Non-Executive Director

Dr. Sheng has over 15 years of semiconductor industry experience.

He has shown an ability to grow businesses from inception, to first revenue and profitability in an effective and accelerated manner. Prior to co-founding Telink Semiconductor in 2010, he was VP of RFIC design at Wiscomm Microsystem Inc., a startup company focusing on CMOS satellite TV tuner chip product.

Chris Wood

Executive Director
Chief Technology Officer

Chris has extensive experience in large telecommunications companies developing mission critical software applications.

Chris has architected projects worth up to \$200M and supported by a pool of 200 IT staff. Chris is a domain expert in the areas of GPS, inertial sensors and communications. Chris also possesses substantial technology development commercialisation experience.

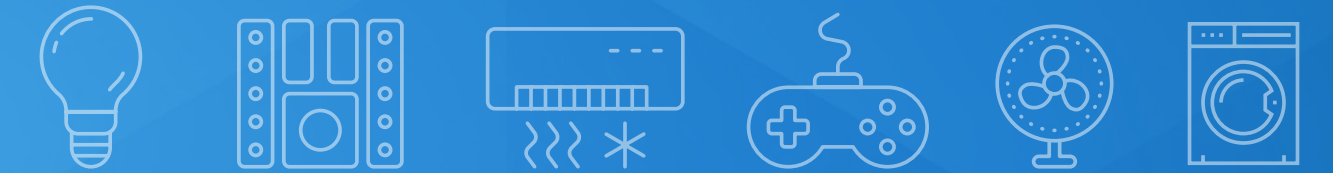
John Schultz

Executive Director
Head of Engineering

John Schultz is a serial entrepreneur founding and successfully growing several companies over the last two decades specialising in the design, manufacture and business development of electronics systems.


John has a wealth of experience running design and manufacturing businesses, managing staff and subcontractors and secured significant international business.

PROGRESS TO DATE

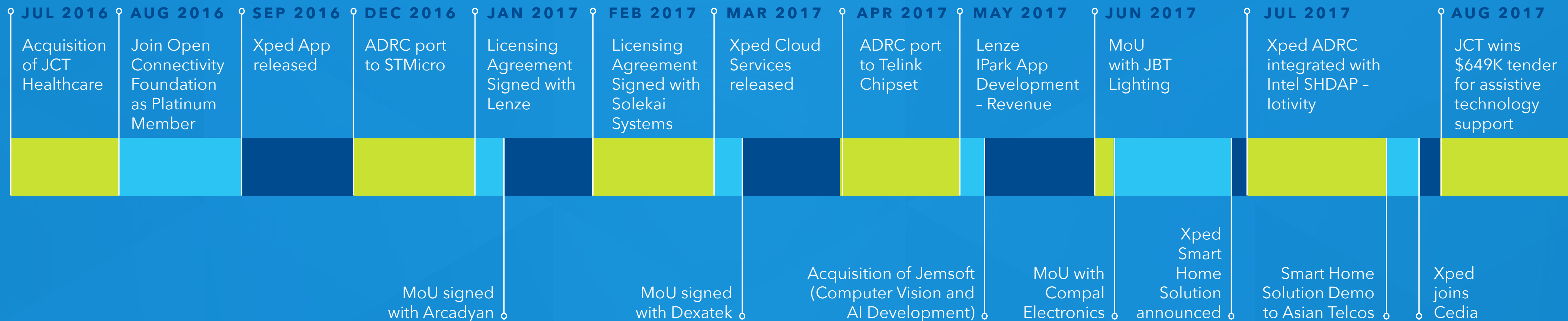


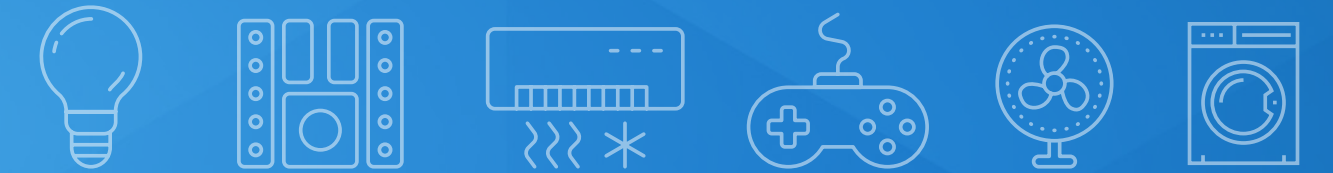
We've achieved many milestones over the last 12 months.

 Establishment of the management team, structure and partnerships.

 Acquisitions of JCT & Jemsoft.

 Development of Core App, IoT Platform and Technologies.





Capital Structure:

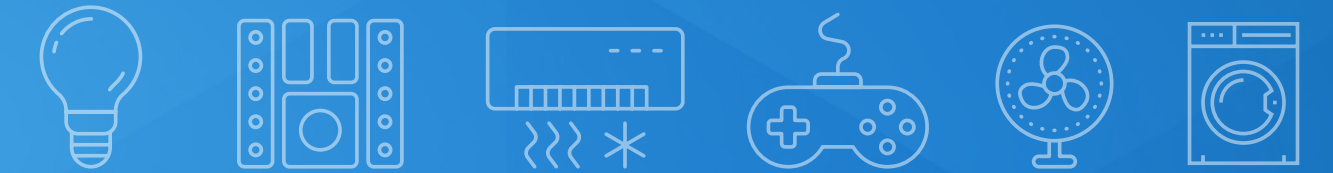
EQUITY CATEGORY	DETAILS	NUMBER ON ISSUE
Listed Ordinary Shares	ASX:XPE	957,430,754
Unlisted Ordinary Shares (Subject to ASX escrow)		253,540,855
Listed Options	ASX: XPEOC \$0.10 Expiring 31/12/2018	102,254,564
Listed Options	ASX: XPEOD \$0.04 Expiring 18/01/2018	568,676,908
Unlisted Options	Strike Prices from \$0.10 to \$0.26 Expiring between 07/09/17 to 31/3/18	30,000,000

TOP 5 SHAREHOLDERS

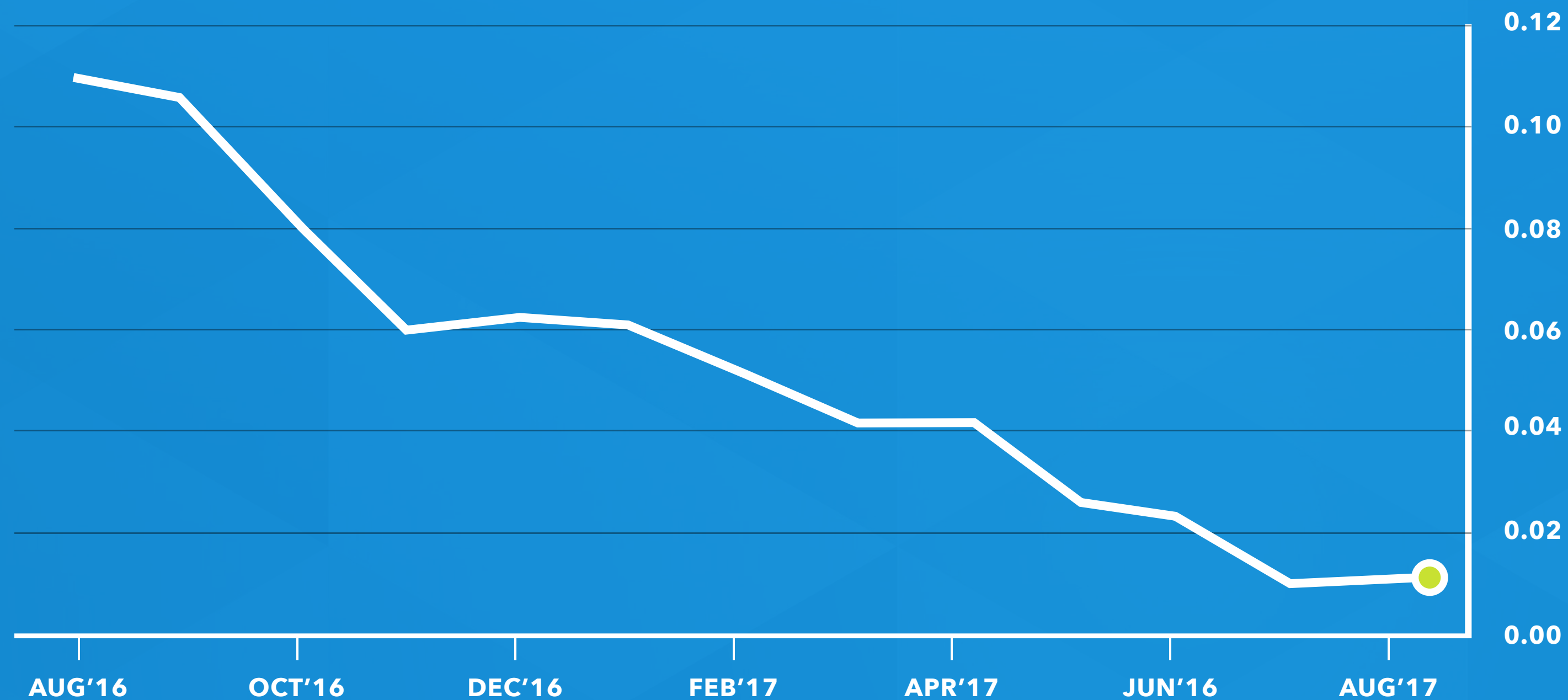
JK Group Australia Pty Ltd	140,288,321
Atlanticx Technologies Pty Ltd	112,732,700
Dalex Pty Ltd	28,077,273
Eddie Jackson Family	25,773,196
Zanzibar Investment	25,000,000

Source: Automic Registry Services Top Holders Grouped Report as of 15th August 2017

FINANCIALS



12 month share price graph:

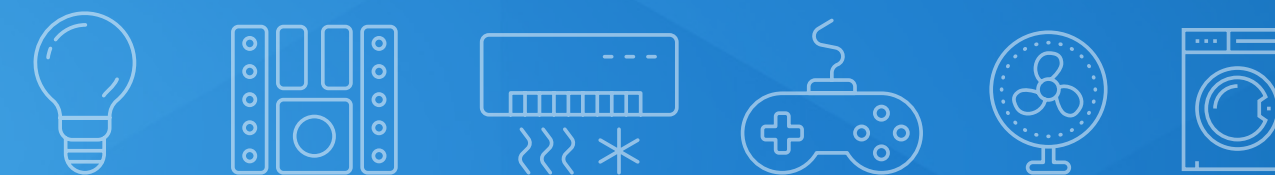


 ASX:XPE

Current Share Price:
\$0.015c (15/8/17)

Market Cap:
\$18.2M at 1.5c

FINANCIALS

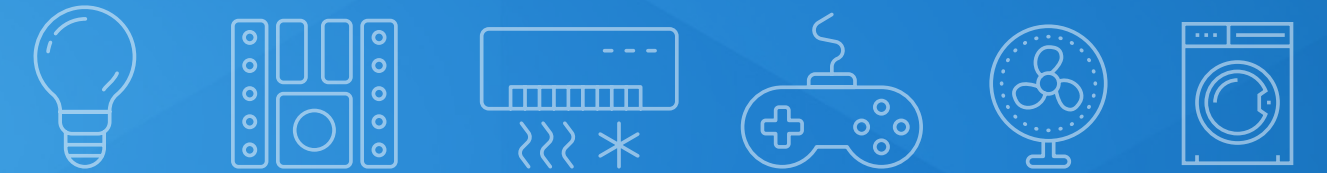


Cash at
30 June 2017:
\$6.75 Million

Expected R&D
Tax Return CY17:
\$2 Million

Early Repayment of
Con Note CY17:
(\$1 Million)

Revenue
Q2 2017:
\$641,000

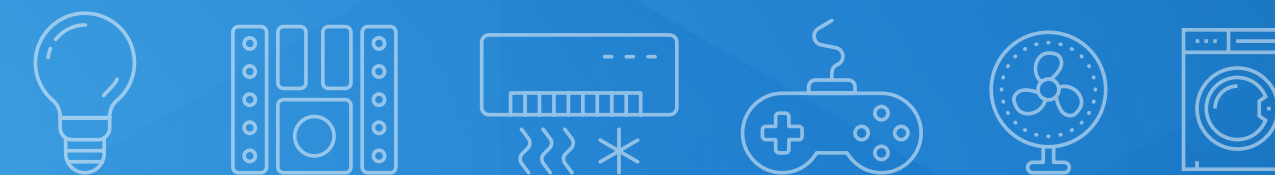


Use of Funds:

Xped requires additional capital to invest primarily into the following cost centres. These funds will also support the ongoing development of technologies on our existing roadmap and to meet evolving market and consumer demands.

- > Stock
- > Marketing and Sales
- > Distribution costs
- > Operations costs
- > Websites
- > Social media
- > Systems implementation

DISCLAIMER



This presentation is not a prospectus nor an offer for securities in any jurisdiction nor a securities recommendation. The information in this presentation is an overview, is based on publicly available information and internally developed data, and does not contain all information necessary for investment decisions. In making investment decisions in connection with any acquisition of securities, investors should rely upon their own examination of the assets and consult their own legal, business and/or financial advisors and should not be relied on in connection with a decision to purchase or sell for any securities.

The information contained in this presentation has been prepared in good faith by Xped Limited however no representation nor warranty expressed or implied is made as to the accuracy, correctness, completeness or adequacy of any statements, estimates, opinions or other information contained in this presentation.

To the maximum extent permitted by law, Xped Limited their directors, officers, employees and agents disclaim liability for any loss or damage which may be suffered by any person through the use or reliance on anything contained in or omitted from this presentation. Certain information in this presentation refers to the intentions of Xped Limited but these are not intended to be forecasts, forward looking statements or statements about future matters for the purposes of the Corporations Act or any other applicable law.

The occurrence of events in the future are subject to risks, uncertainties and other factors that may impact Xped Limited actual results, performance or achievements to differ from those referred to in this presentation. Accordingly, Xped Limited, their directors, officers, employees and agents do not give any assurance or guarantee that the occurrence of the events referred to in this presentation will actually occur as contemplated.

THANK YOU

FOR MORE INFORMATION:

Xped Limited

ABN 89 122 203 196

Level 6, 412 Collins Street
Melbourne VIC 3000

T +61 3 9642 0655

F +61 3 9642 5177

E info@xped.com

www.xped.com

