



# Haoma Mining NL

A.B.N 12 008 676 177

**Registered Office & Head Office:**

Tonic House, 386 Flinders Lane, Melbourne, Vic., 3000, GPO Box 2282U, Melbourne, Vic., 3001.

Telephone (03) 9629 6888, Facsimile (03) 9629 1250

Email: [haoma@roymorgan.com](mailto:haoma@roymorgan.com) Website: [www.haoma.com.au](http://www.haoma.com.au)

October 5, 2017

Company Announcements Office  
Australian Stock Exchange  
Level 4, North Tower, Rialto  
525 Collins Street,  
**MELBOURNE, VIC 3000**

Dear Sir,

**Haoma Mining's tenements at the Bamboo Creek Mine and Comet Mine, near Marble Bar, contain Pyritic Conglomerate Materials in the Hardey Sandstone Formations**

Recently numerous mining companies involved in mineral exploration in the Pilbara Region of Western Australia have reported new discoveries of Conglomerate Formations hosting gold mineralisation including nuggets.

These new discoveries of gold bearing Conglomerate Materials include Witwatersrand style mineralisation at 'Comet Well' and 'Purdy's Reward' by Artemis Resources (ASX: ARV) and Novo Resources (TSX-V: NVO), and at Louden's Patch by De Grey Mining (ASX: DEG).

A resurgence in gold exploration is taking place throughout the Pilbara Region in known areas of outcropping conglomerates containing Fortescue Group rock types – a thick pile of sedimentary and volcanic rocks underlying much of the Pilbara region.

Haoma has recently received requests to release details on their tenement holdings that contain significant quantities of Conglomerate Materials.

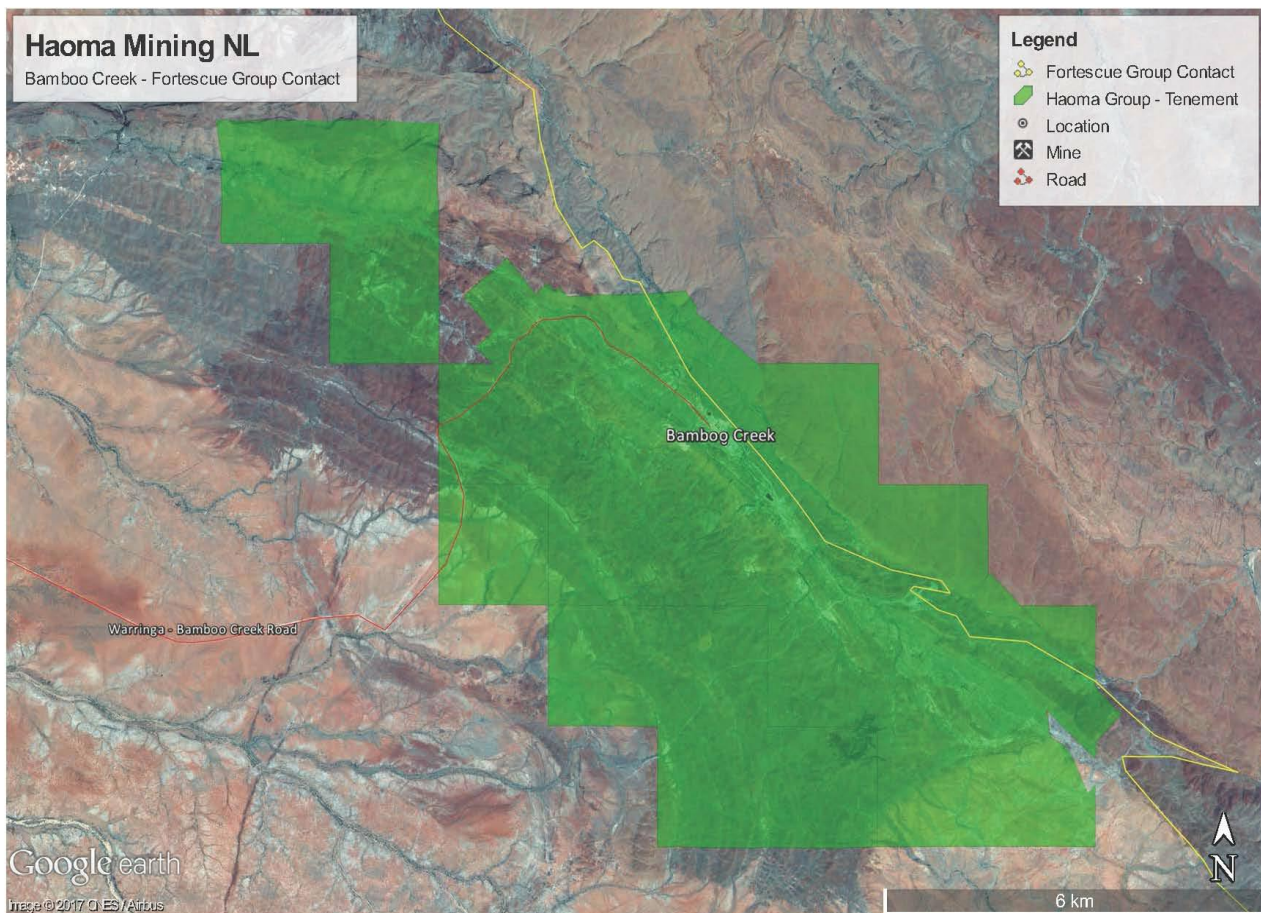
Those Haoma areas which contain contact zones and rock types of the Lower Proterozoic Fortescue Group include Haoma's mining tenements at Bamboo Creek (Figure 1) and Marble Bar Comet Mine (Figure 2) which contain Conglomerate Materials in the Hardey Sandstone Formations.

Similarities between Proterozoic lithologies in the Pilbara, WA, and South Africa have long been recognised, and Hardey Sandstone Conglomerates and Witwatersrand Conglomerates have comparable prospectively for gold.

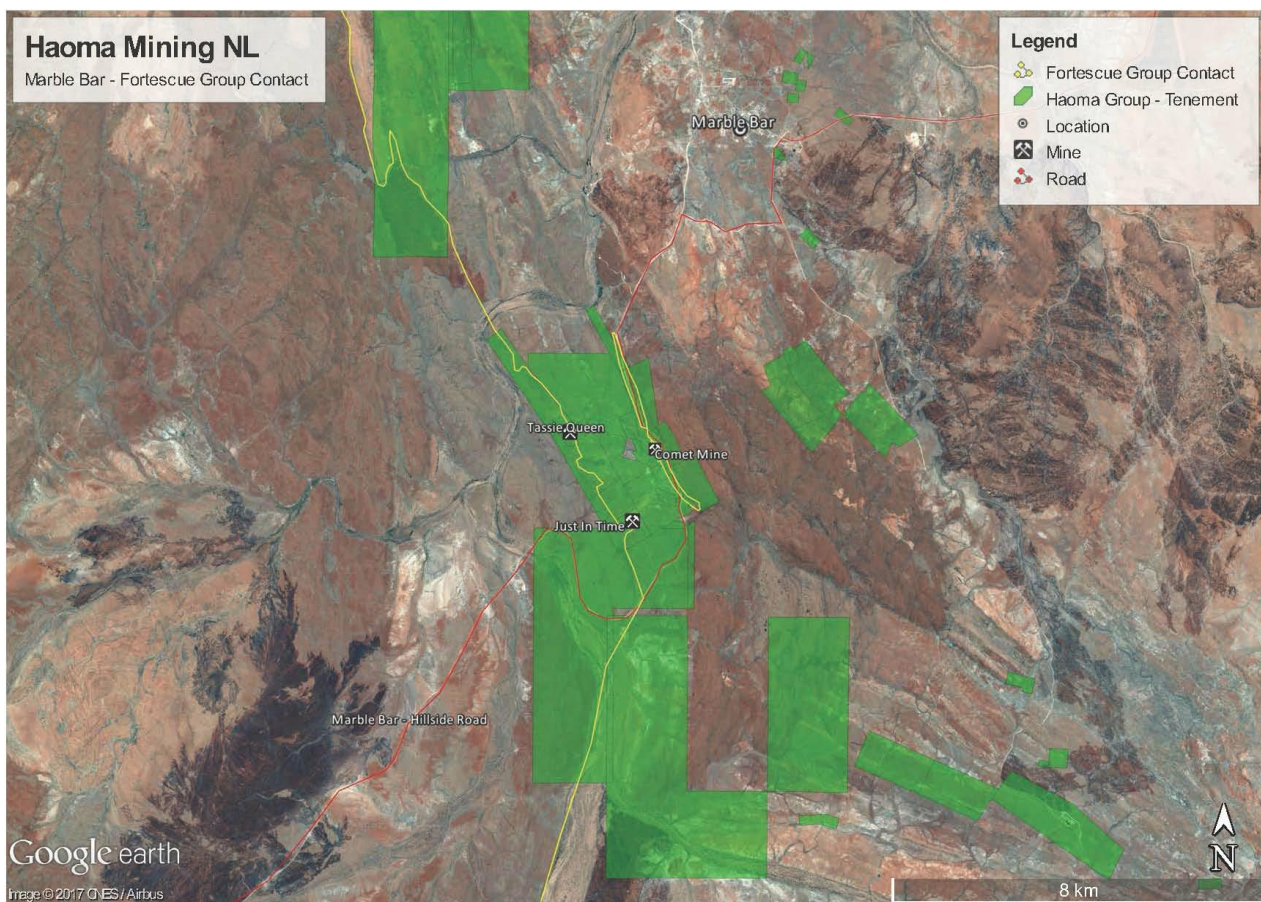
Historically small scale gold mining of Conglomerate Materials at Beatons Creek (Artemis Resources: ARV), Just In Time and Tassie Queen (Comet Mine, near Marble Bar) have provided evidence that the similarities are valid.

Bulk samples taken during the late 1990s of Conglomerate Materials from near the Comet Mine showed the Hardey Sandstone Conglomerate Formations contained 'free' gold.

Over the current Quarter Haoma Mining will bulk sample Conglomerate Materials from the Hardey Sandstone Formations near both the Bamboo Creek Mine and Comet Mine, near Marble Bar.



**Figure 1:** Haoma Mining NL tenements at Bamboo Creek that contain Conglomerate Materials in the Hardey Sandstone Formations.



**Figure 2:** Haoma Mining NL tenements at Marble Bar that contain Conglomerate Materials in the Hardey Sandstone Formations.



**Figure 3:** Pyritic Conglomerate Material from Tassie Queen, Comet Mine, Marble Bar, WA

Yours sincerely,

A handwritten signature in black ink, reading "Gary Morgan". The signature is stylized with a long, sweeping underline.

**Gary C Morgan,  
CHAIRMAN**