

Annual General Meeting CEO Presentation

24 November 2017

Disclaimer & Competent Person's Statement



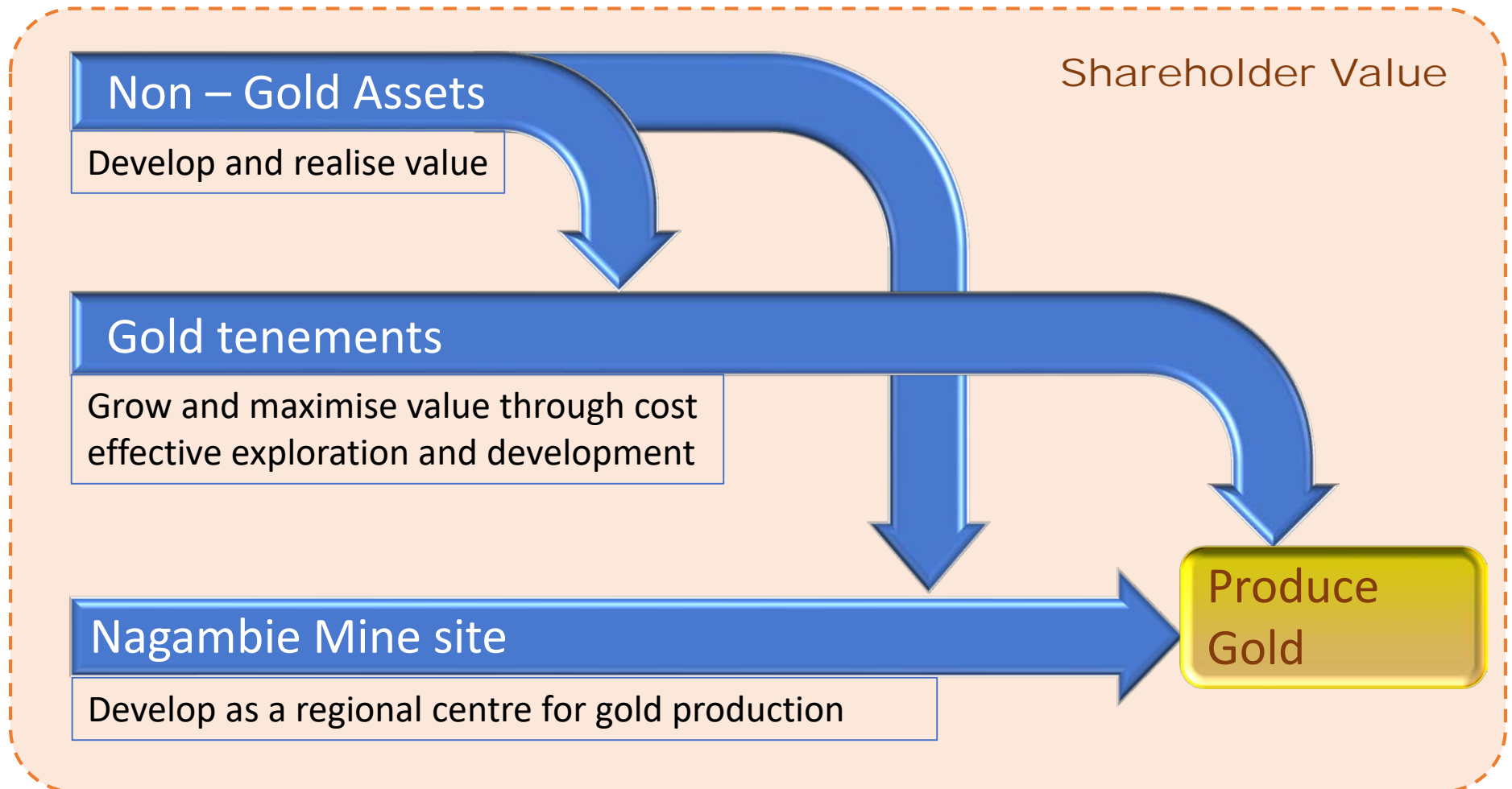
FORWARD-LOOKING STATEMENTS

This presentation contains “forward-looking statements” within the meaning of securities laws of applicable jurisdictions. Forward-looking statements can generally be identified by the use of forward-looking words such as “may”, “will”, “expect”, “intend”, “plan”, “estimate”, “anticipate”, “believe”, “continue”, “objectives”, “outlook”, “guidance” or other similar words, and include statements regarding certain plans, strategies and objectives of management and expected financial performance. These forward-looking statements involve known and unknown risks, uncertainties and other factors, many of which are outside the control of Nagambie Resources and any of its officers, employees, agents or associates. Actual results, performance or achievements may vary materially from any projections and forward-looking statements and the assumptions on which those statements are based. Exploration potential is conceptual in nature, there has been insufficient exploration to define a Mineral Resource and it is uncertain if further exploration will result in the determination of a Mineral Resource. Readers are cautioned not to place undue reliance on forward-looking statements and Nagambie Resources assumes no obligation to update such information.

STATEMENT AS TO COMPETENCY

The exploration results and comments in this presentation have been compiled by Mr Geoff Turner, who is a Fellow of the Australian Institute of Geoscientists, has more than ten years in the estimation, assessment, and evaluation of mineral resources and ore reserves, and has more than 20 years in exploration for the relevant style of mineralisation that is being reported. In these regards, Geoff Turner qualifies as a Competent Person as defined in the 2012 edition of the “Australasian Code for Reporting of Exploration Results, Mineral Resources and Ore Reserves”. Geoff Turner acts as a consultant to Nagambie Resources and consents to the inclusion in this presentation of these matters based on the information in the form and context in which it appears.

Strategy overview





Gold exploration and development

PASS Project

Quarrying

Reprocessing tailings for gold

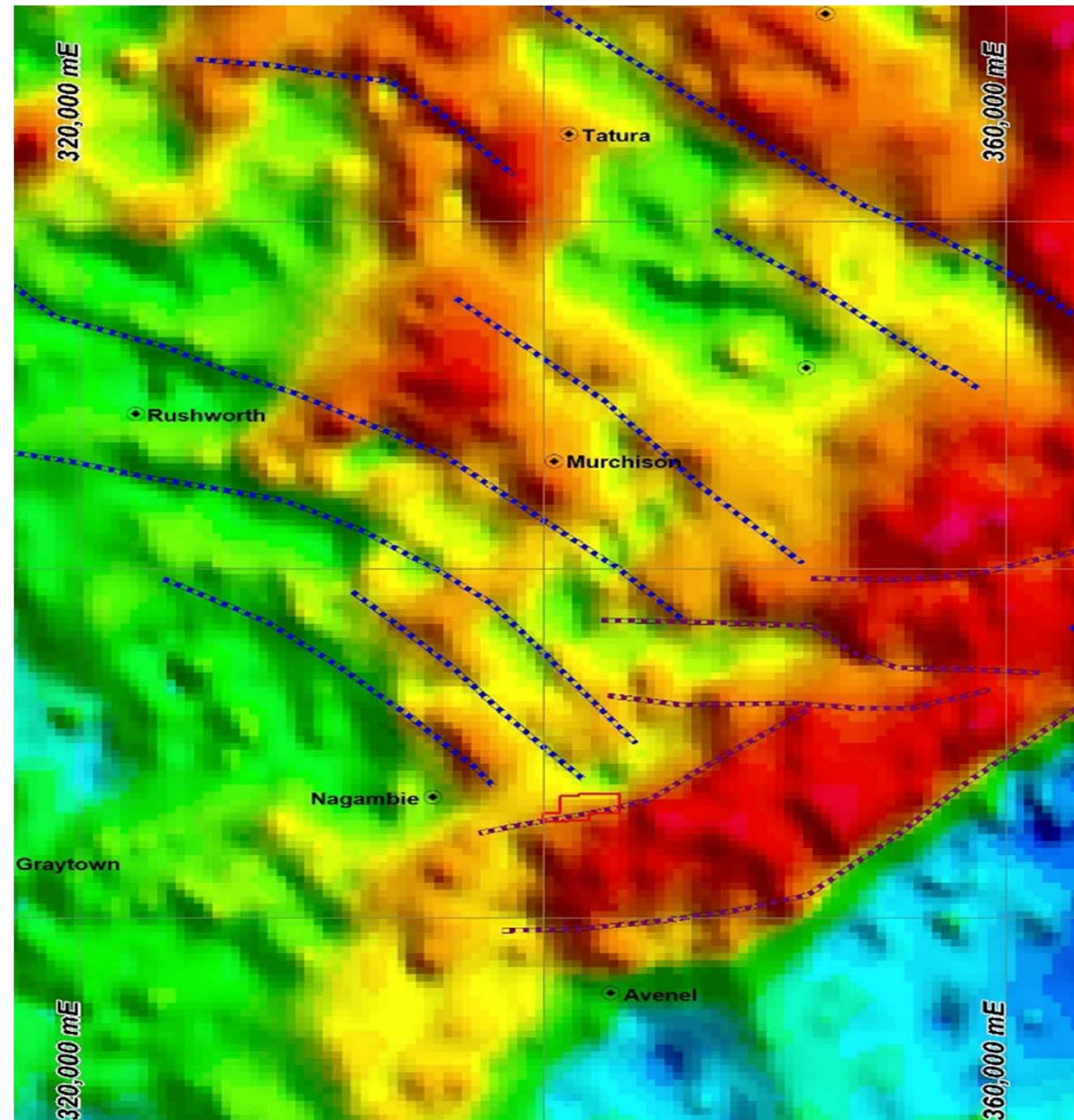
General operations

Gold exploration and development



2016/17

- Conducted aeromagnetic surveys over selected tenements
- Refined Nagambie Region Gold Model
- Picked up new tenements based on the model



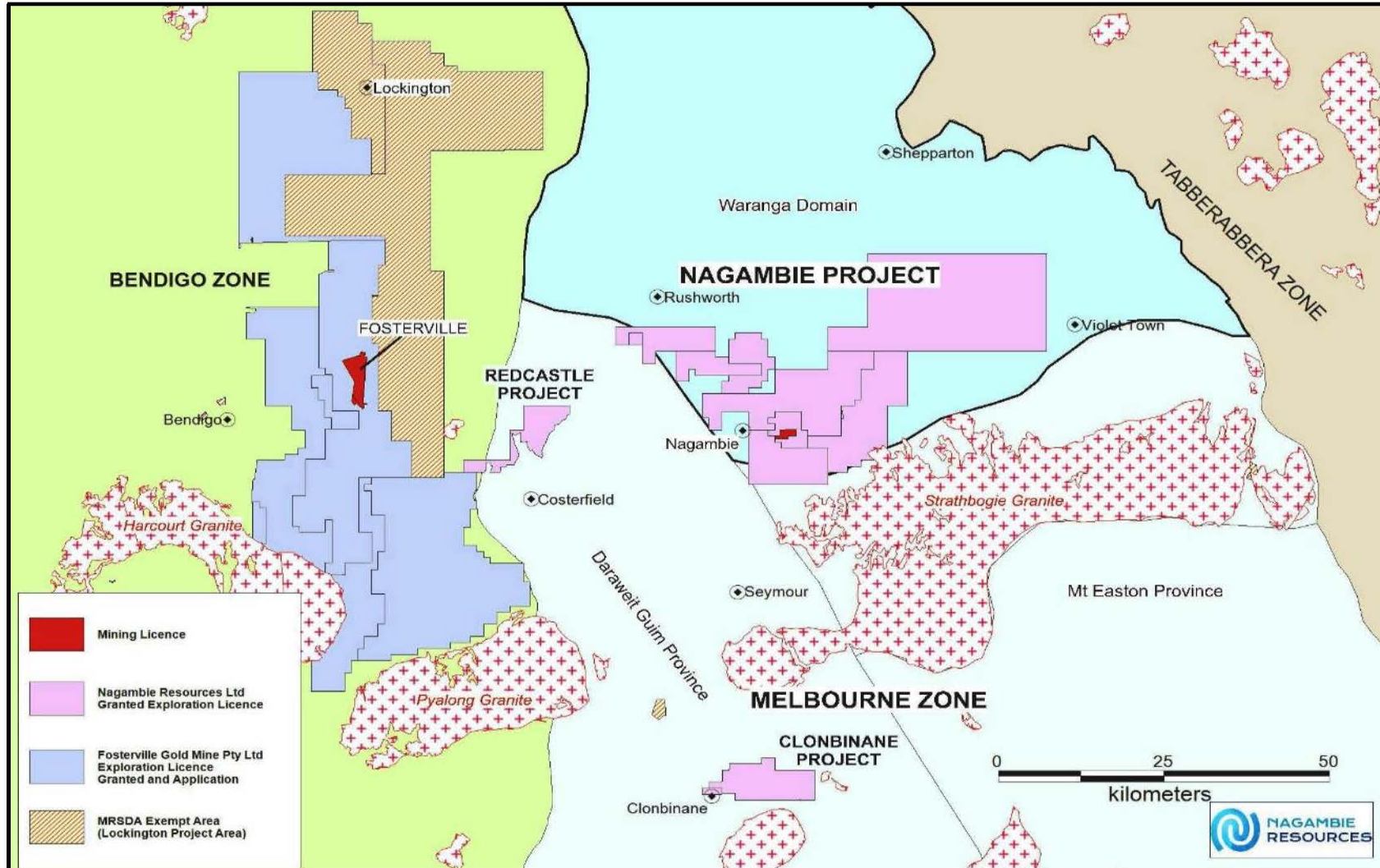
Gold exploration and development



Nagambie Resources now has:

- ☑ 100% control of all the silicified sandstone/siltstone outcropping and near-outcropping ground in the Waranga Domain of the Melbourne Zone, which is highly prospective for gold-in-sediments deposits
- ☑ Access to Geoff Turner and his enhanced Nagambie Regional Gold Model
- ☑ Access to leading soil sampling protocols, geophysical contractors and drilling contractors
- ☑ Access to sufficient funds to accelerate the exploration for “Fosterville look-alikes”

Gold exploration and development



Gold exploration and development



In comparison to the Fosterville Gold Mine sulphide-gold orebodies, Nagambie region sulphide-gold orebodies:

- ☑ Are in the same host rocks (silicified sandstone and siltstone sediments)
- ☑ Have the same mineralisation style at surface (antimony-arsenic-associated, finely-disseminated –gold-in-sediments)
- ☑ Were formed around the same geological time (roughly 377 million years ago)
- ☑ Have temperature and pressure naturally increasing with increasing depth
- ☑ Have very similar and very deep structural controls
 - Nagambie Region – Nth-Sth compression which has resulted in E-W faulting at surface (and E-W striking orebodies)
 - Fosterville sediments - E-W compression which has resulted in Nth-Sth faulting at surface (and Nth-Sth striking orebodies)

Gold exploration and development



2018

1. Commence IP surveys at:

- Nagambie Mine – next week
- Racecourse – Dec 17 / Jan 18



Results in Jan / Feb 18

2. IP survey of Wandean after IP surveys of Mine and Racecourse Prospect
3. Aeromagnetic survey of Miepoll area
4. Diamond drilling of best IP sulphide-gold underground targets

PASS Project

- A rehabilitation project

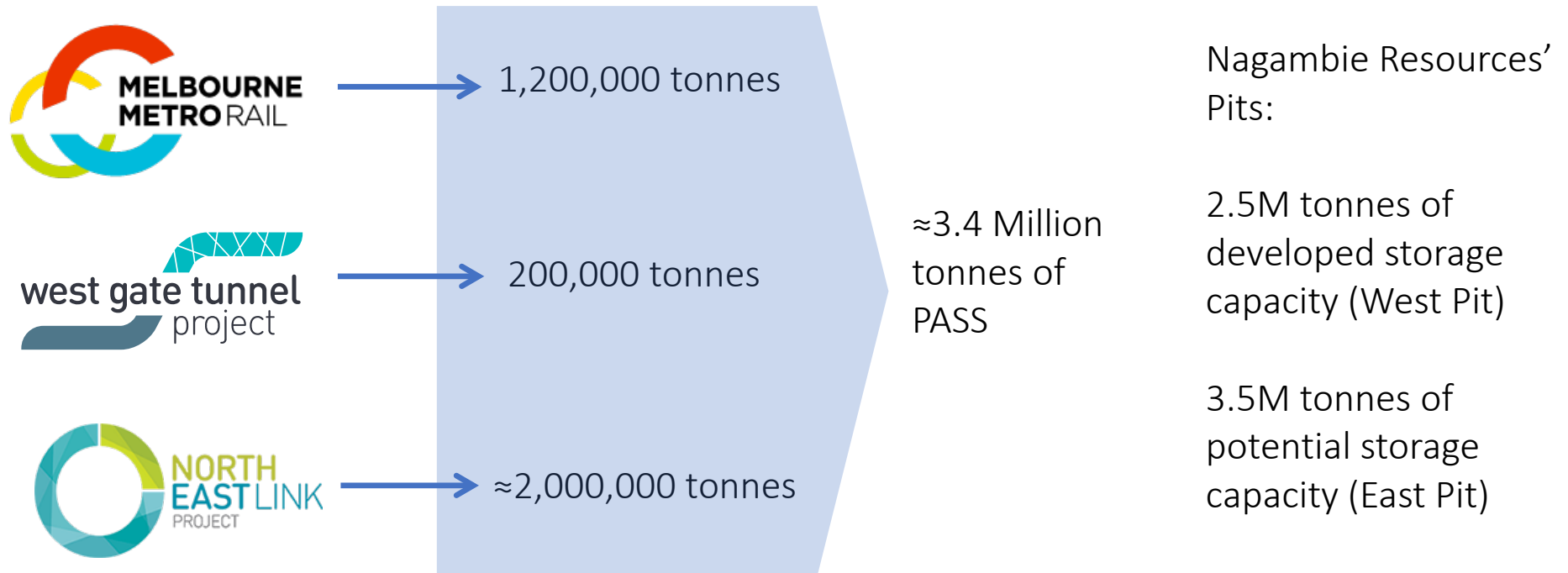


Potential Acid Sulfate Soil and Rock (PASS)



PASS Project

Quantity of PASS that could be generated from major projects



PASS Project

The recent The Australia Institute Report ([The Dark Side of the Boom](#)) states:

- Could be 19,000 abandoned mining related sites in Vic
- Bonds held by Vic Govt = \$160M
- Estimate of total rehabilitation liabilities = >\$938M
- Government is starting to focus on rehabilitation



The Australia Institute
Research that matters.

Dark side of the boom (Victoria)

**What we do and don't know about
mines, closures and rehabilitation in
Victoria**

Little data is available to the public on the clean-up from the mining boom. State government agencies often lack basic information on how many mines are in operation, with still less published on closures and abandonments.

Rod Campbell
Jesper Lindqvist
Bill Browne
Tom Swann
Matt Grudnoff
July 2017

PASS Project

- Melbourne landfill space is rapidly diminishing
- Waste management planning assumes maximum expansion of 5 existing landfills in outer Melbourne (including Ravenhall)
- Looming legal challenge over the expansion of Ravenhall

Landfills earmarked for closure

Hover over an icon for address and closing date



The Age, 5 Aug 2017

"If this site (Ravenhall) does not receive land use planning approval, the metropolitan region is at risk of having inadequate landfill capacity to meet expected needs and a new landfill hub of similar capacity may need to be scheduled by 2021, and built and commissioned by 2026,"

Sustainability Victoria

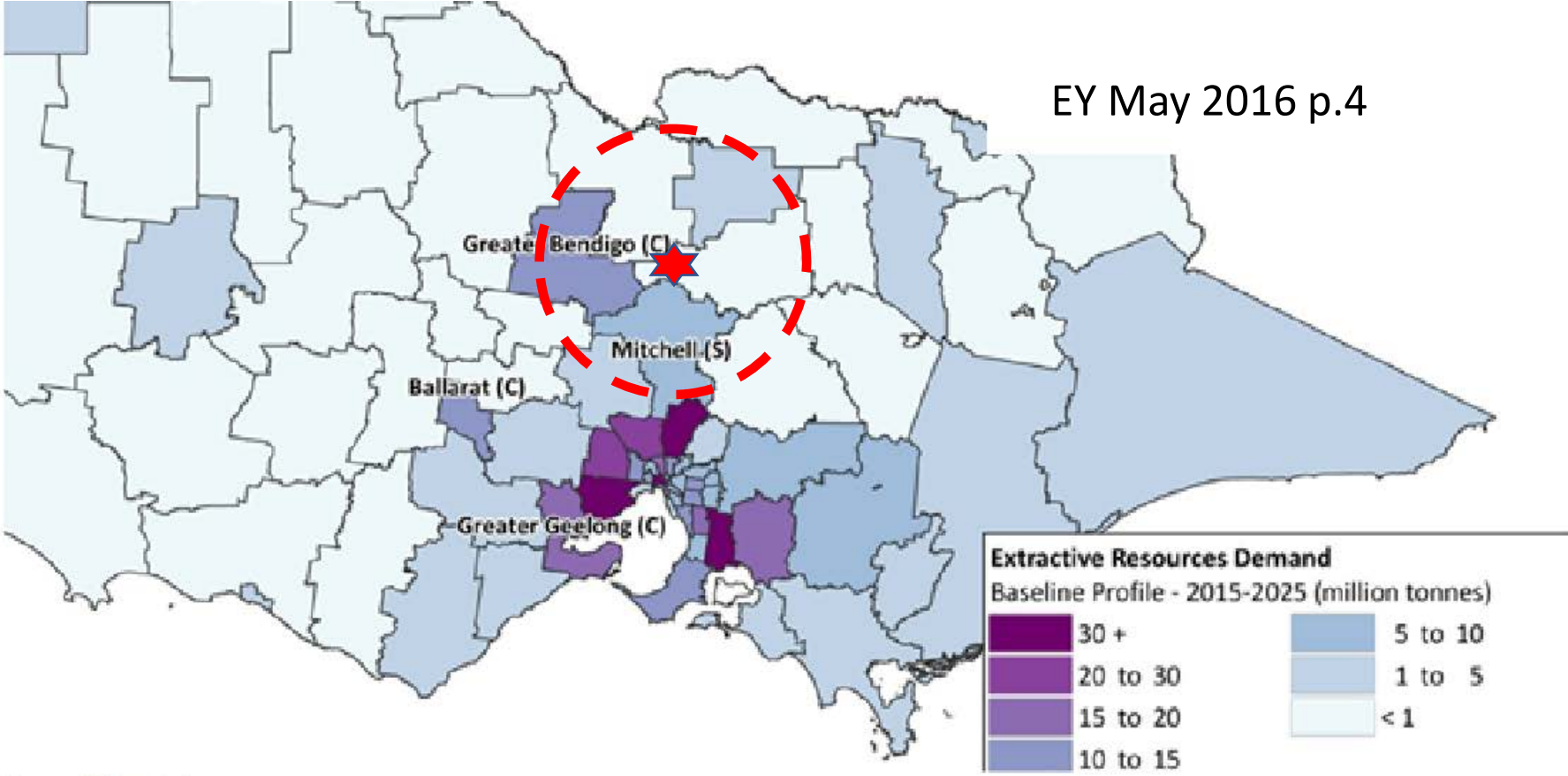
PASS Project

2016/17

- Installed groundwater monitoring bores
- Commenced hydrogeological assessment
- Finalised all permitting applications



Quarrying

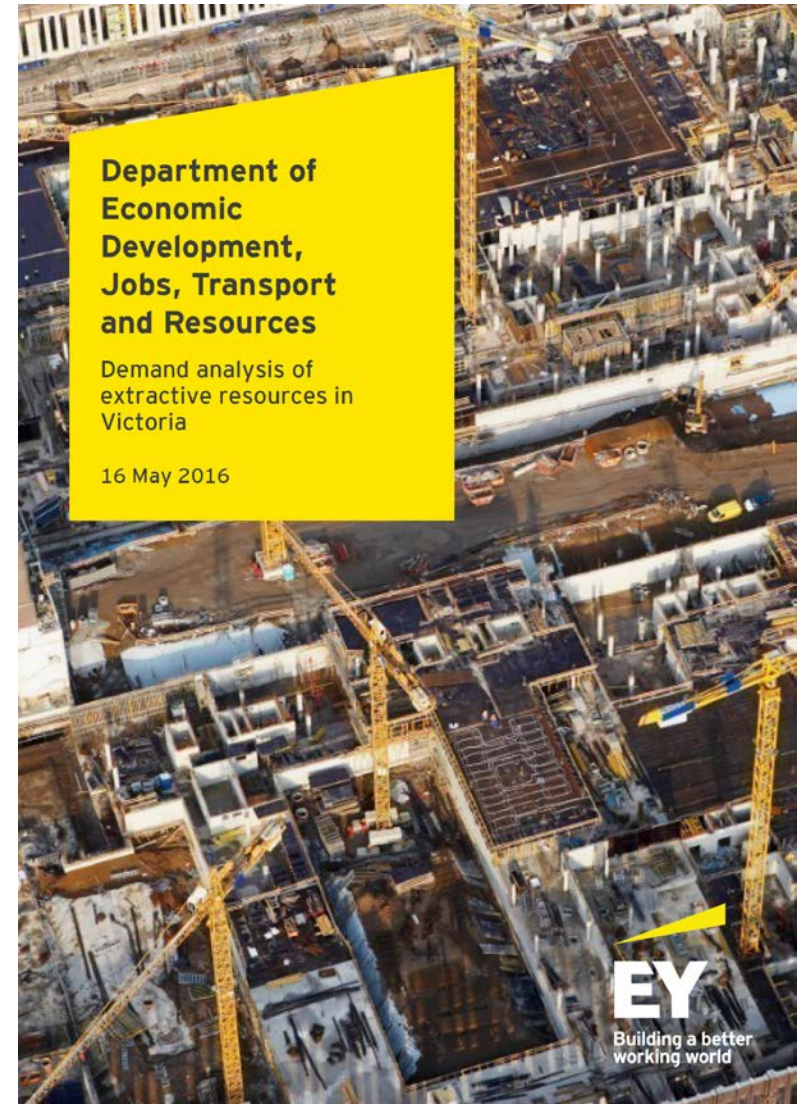


Source: EY analysis

Demand for extractive resources by LGA to 2050

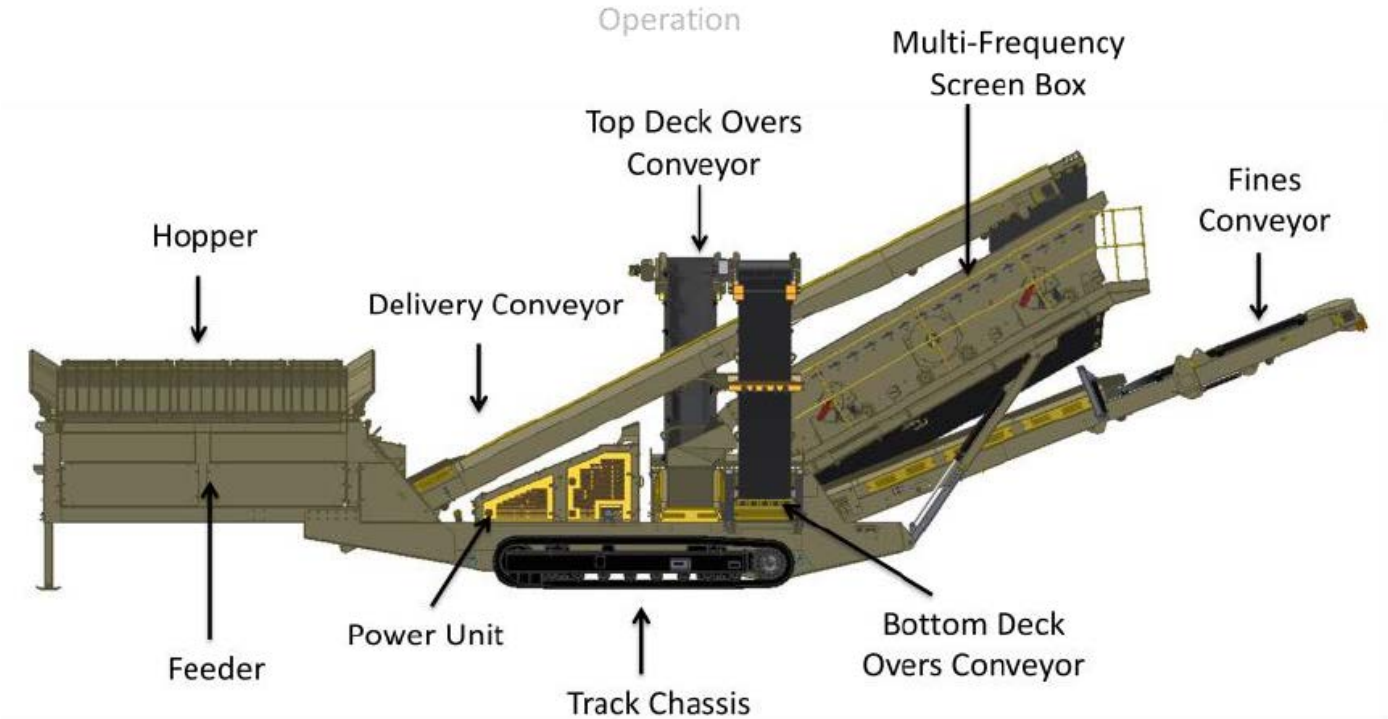
Quarrying

“Road base Class 1 and 2, concrete and concrete sand have been identified throughout the analysis as potential areas of concern due to their minimal substitutability” (p5)



Quarrying

- Production of concrete aggregates from mine tailings



GT205 *Multi-Frequency* Track-Mounted Screen



Quarrying

CONCRETE AGGREGATES

Competitive advantages:

- 3,000,000 tonnes of material available
- Rock is already crushed
- Aggregates are suitably angular (less cement is needed)
- Aggregates are a recycled product

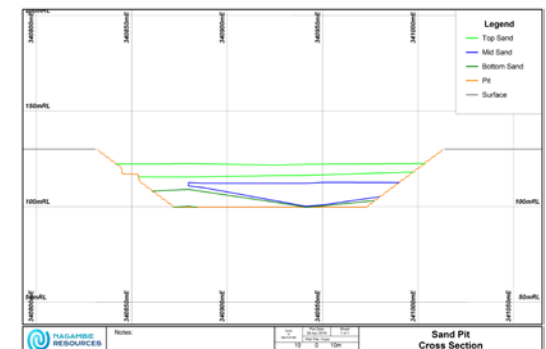
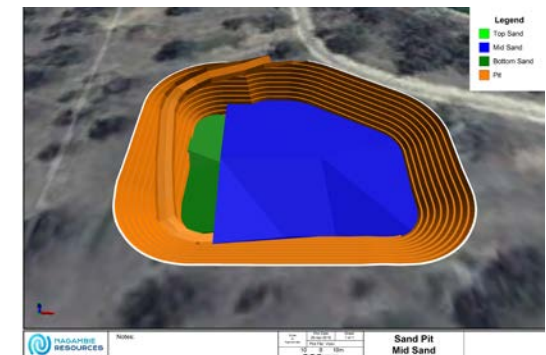
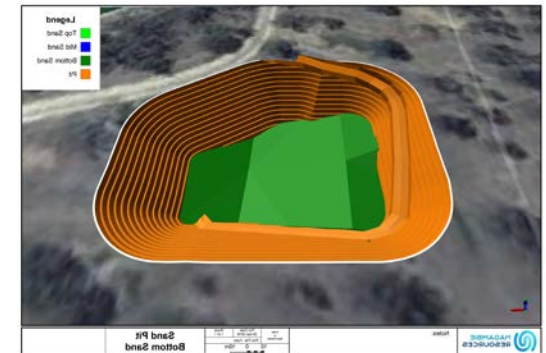


Quarrying

SAND

2016/17

- Prepared first preliminary pit design
 - Circa 400,000 tonnes of sand
- Commenced preparation of internal roads and sand stockpiling area
- Commenced approvals process
 - Planning permit
 - Work Plan



Quarrying

SAND

In 2018

1. Continue the approvals process
 - Ecological studies
 - Hydrogeological modelling
 - Establish vegetation offsets
 - Community consultations
2. Finalise construction of internal roads and sand stockpiling area
3. Trial sand screening with MFS



Quarrying



CLAY

- Complete planning approval for new clay pit by end 2017
- Can be used in crushed rock products, or as capping material for landfills
- Flexibility with onsite infrastructure

Quarrying

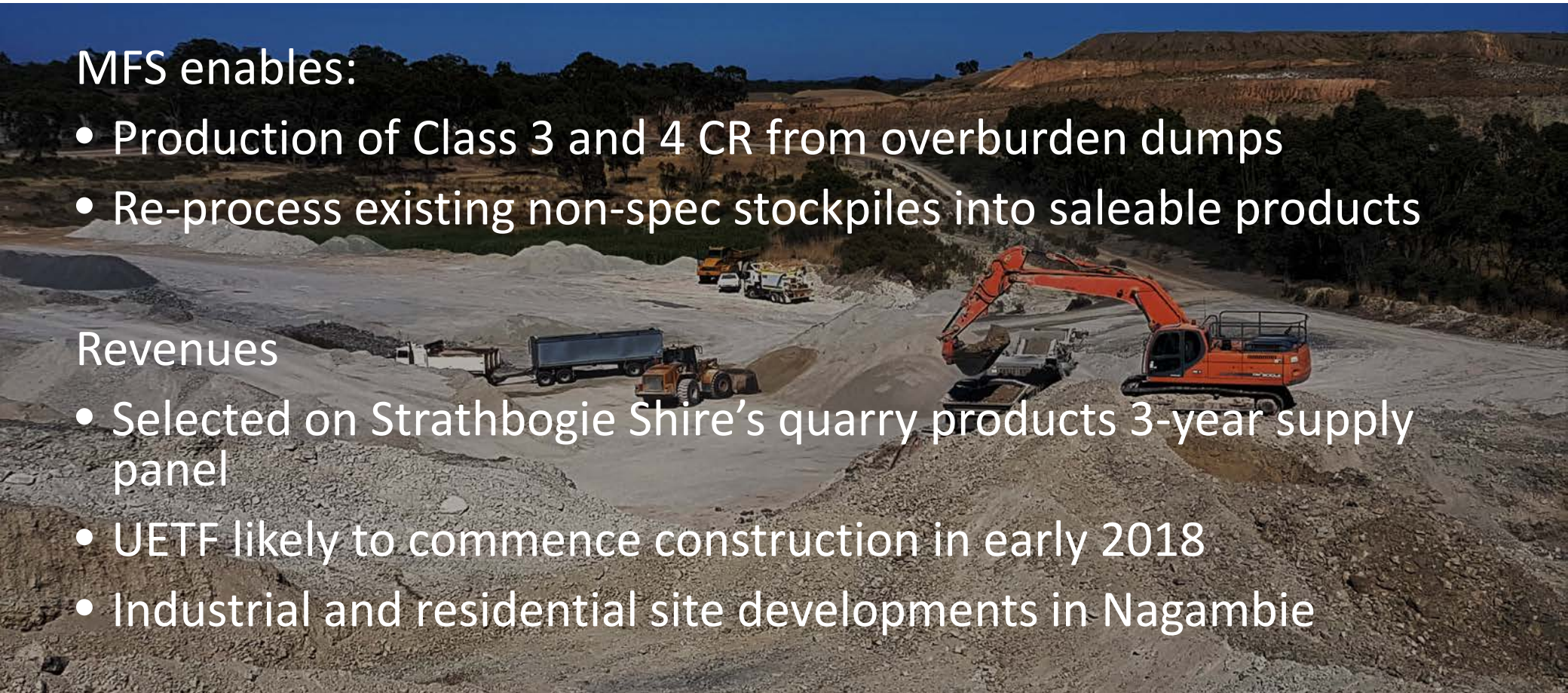
Crushed rock products

MFS enables:

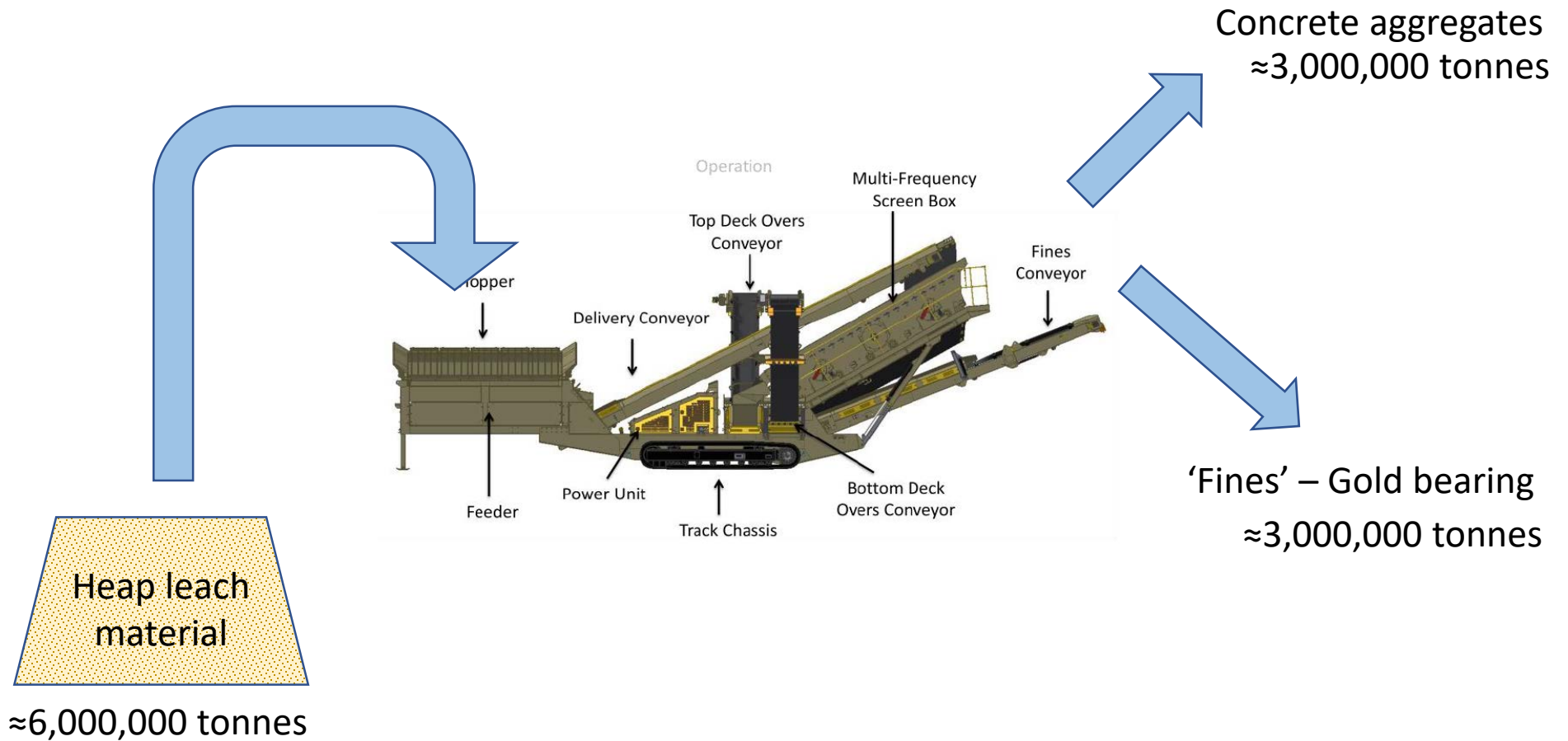
- Production of Class 3 and 4 CR from overburden dumps
- Re-process existing non-spec stockpiles into saleable products

Revenues

- Selected on Strathbogie Shire's quarry products 3-year supply panel
- UETF likely to commence construction in early 2018
- Industrial and residential site developments in Nagambie



Reprocessing 'fines' for gold



Reprocessing 'fines'

- Based on historic data, heap leach material could average 0.2 g/t of gold*
- Potentially 19,000+ ounces of gold in the 'fines'
- Potential value of in-situ gold in fines
≈ \$32m+ (at \$1,700 / ounce)

* 0.2 g/t of gold based on historically reported head grade of 1.0 g/t and reported gold recovery of 80%. The estimation provided is historical in nature and not reported in accordance with the JORC 2012 Code. A competent person has not done sufficient work to classify the historical estimates as mineral resources or ore reserves in accordance with the JORC 2012 Code. It is uncertain that following evaluation and/or further exploration work that the historical estimates will be able to be reported as mineral resources or ore reserves in accordance with the JORC 2012 Code.

General operations

- Weighbridge
- IT/Comms cost reductions
 - VoIP
 - Reliable internet access
 - Remote data / information access
 - Office connection with weighbridge
- Fire risk management



www.nagambieresources.com.au

James Earle – Chief Executive Officer
james@nagambieresources.com.au
0481 462 642