

#### ABOUT KOPORE METALS

Kopore Metals Limited is a public company listed on the Australian Securities Exchange (ASX) and is actively exploring its copper-silver prospects on the world class Kalahari Copper Belt, Republic of Botswana.

#### DIRECTORS & MANAGEMENT

PETER MEAGHER  
Non-Executive Chairman

GRANT FERGUSON  
Managing Director

SHANNON COATES  
Non-Executive Director

ANDREW METCALFE  
Company Secretary

DAVID CATTERALL  
Exploration Manager

#### REGISTERED OFFICE

Suite 3 Level 2, 470 Collins  
Street, Melbourne Vic 3000

**KOPORE METALS LIMITED**  
ABN 73 149 230 811  
EMAIL [info@koporemotals.com](mailto:info@koporemotals.com)  
TEL +61 3 9867 7199  
FAX +61 3 9867 8587

## KOPORE COMMENCES MAIDEN DRILL PROGRAM ON THE KALAHARI COPPER BELT

#### HIGHLIGHTS:

- **Maiden drill program commences** to test regional scale copper-silver anomalies across **KM3 and GW3 targets** identified by coincident soil geochemistry and airborne EM.
- Drill rig mobilisation in progress with drilling to commence early next week.
- **Initial program comprises approximately 3,000m** of reverse circulation (RC) drilling:
  - Initially targeting the interpreted synclinal KM3 prospect, coincident copper-lead-zinc geochemical and airborne EM anomalies.
  - Drilling to follow at GW3 target, with multiple soil anomalies that overlay the historically mapped D'Kar formation anticline.
- Drilling to be undertaken by Discovery Drilling Group, whom have a long history of exploration in the Kalahari Copper Belt.
- Drilling at KM1's significant copper soil anomaly planned following completion of drilling at GW3.

**Kopore Metals Limited ("Kopore" or "Company")** is pleased to announce its Maiden Exploration Drill Program at KM3 and GW3 Prospects. The Company will test its regional scale soil geochemical and airborne electromagnetic (EM) anomalies, on its 100% held Kalahari Copper Belt prospecting licence portfolio.

The reverse circulation (RC) drilling will comprise an initial ~3,000m program across the Company's recently identified copper anomalies at KM3 and GW3 copper prospects.

The Company plans to follow up the KM1 copper anomaly with further drilling in Q3 2018.

#### Managing Director Grant Ferguson stated:

*"The mobilisation of Discovery Drilling Group is an exciting milestone for KMT which allows for the commencement of the initial 3,000m at the Company's highly prospective KM3 and GW3 targets.*

*The Company's methodical approach to systematically rank the most prospective targets across our 100% owned 8,658km<sup>2</sup> license area gives the Company great confidence leading into our initial program and testing these identified high priority targets.*

*This follows our recently granted EMP approval across Kopore's entire license area that will allow for a seamless transition and consistent newsflow as the Company systematically tests these targets."*

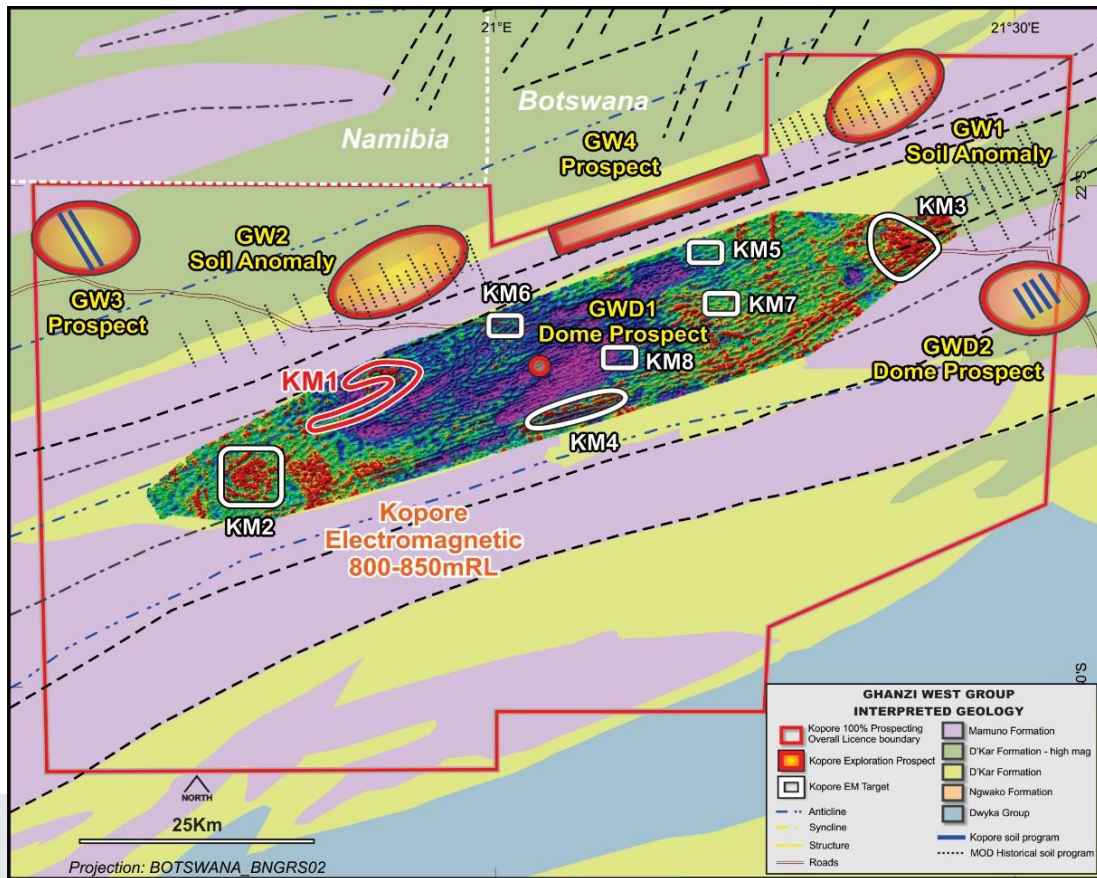


Figure 1 - GWD1 Dome airborne survey EM image (800-850mRL) with reinterpreted geology and exploration prospects

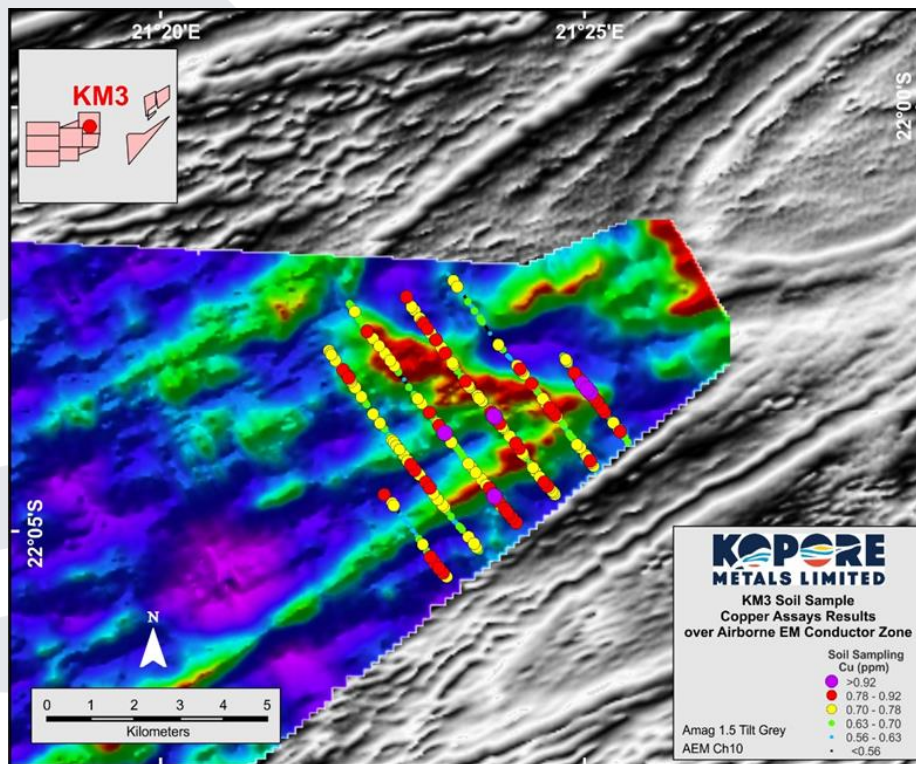


Figure 2 - KM3 copper in soil sample results overlying 2017 airborne EM survey conductor zone with airborne magnetics base map



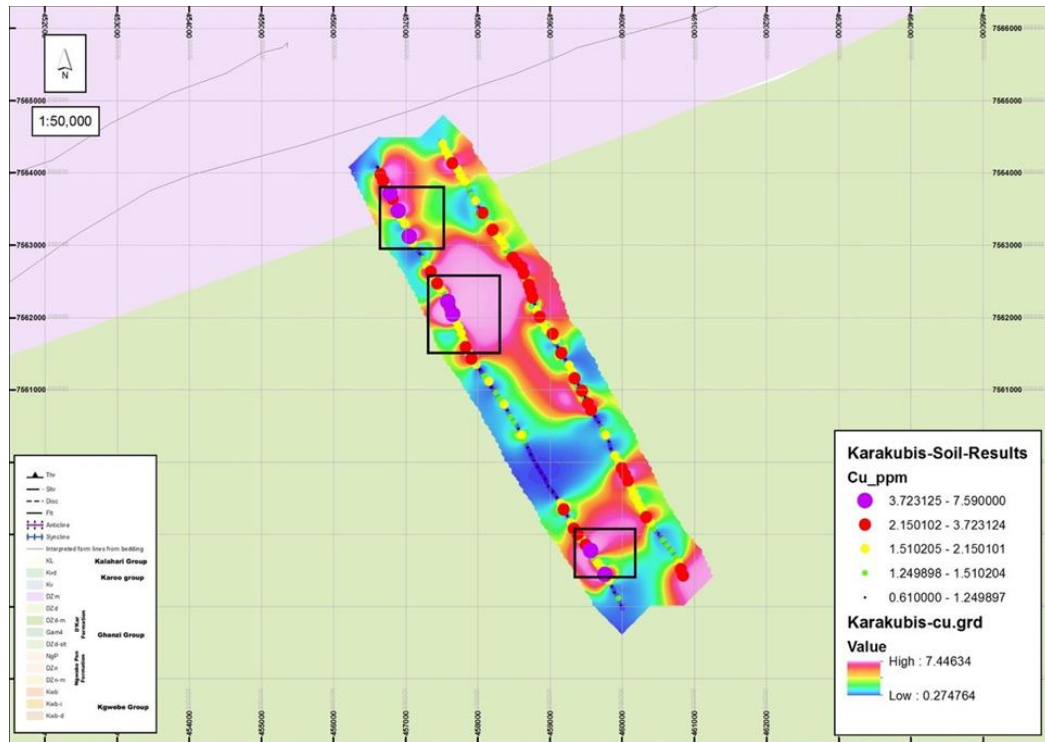


Figure 3 - GW3 Copper Soil Geochemical Point Data, Copper in Soil Contours and Interpreted Geology

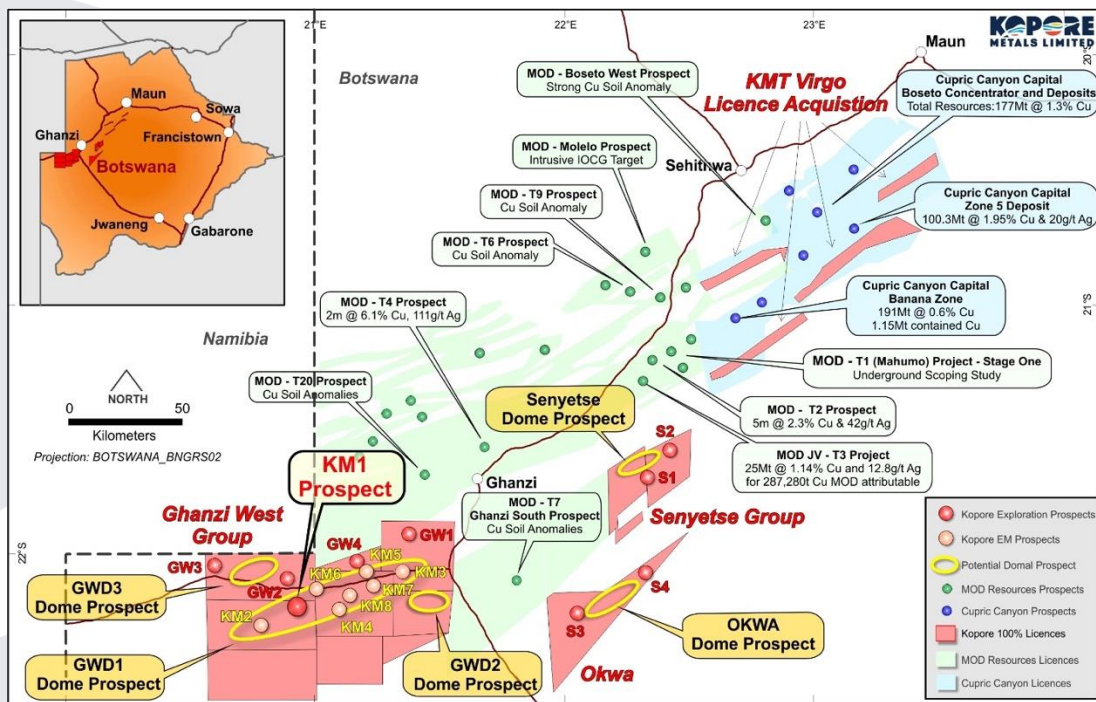


Figure 4 - Kopore Metals regional licence map and key identified targets

Pursuant to Listing Rule 5.23.1, the information in this announcement that relates to exploration results is based on information that has previously been presented in Table 1 "Section 1 - Sampling Techniques and Data" and "Section 2 – Reporting of Exploration Results" as released by the Company on the 5 December 2017, 7 June 2018 and 21 June 2018.

Pursuant to Listing Rule 5.23.2, the Company confirms that it is not aware of any new information or data that materially affects the information included in the Company's announcement of the 5 December 2017, 7 June 2018 or 21 June 2018.

The information in this announcement that relates to exploration results is based on information compiled by Mr David Catterall, a Competent Person and a member of a Recognised Professional Organisations (ROPO). David is engaged by Kopore as a consultant Exploration Manager. David Catterall has sufficient experience that is relevant to the style of mineralisation and type of deposit under consideration and to the activity being undertaken to qualify as a Competent Person as defined in the 2012 Edition of the Australasian Code for Reporting of Exploration Results, Mineral Resources and Ore Reserves (JORC 2012). David Catterall is a member of the South African Council for Natural Scientific Professions, a recognised professional organisation. David Catterall consents to the inclusion in the report of the matters based on his information in the form and context in which it appears.

- END -

**FOR FURTHER INFORMATION PLEASE CONTACT:**

**GRANT FERGUSON**  
Managing Director  
Tel. +61 3 9867 7199  
[info@koporemotals.com](mailto:info@koporemotals.com)