



# First Au Limited (ASX: FAU)

*West Australian-focused Gold and Base Metals Explorer*

## **CORPORATE PRESENTATION**

8 May 2019

Presented by Dr Gavin England

# Disclaimer

---



This presentation does not constitute investment advice. Neither this presentation nor the information contained in it constitutes an offer, invitation, solicitation or recommendation in relation to the purchase or sale of shares in any jurisdiction. This presentation does not take into account any person's particular investment objectives, financial resources or other relevant circumstances and the opinions and recommendations in this presentation are not intended to represent recommendations of particular investments to particular persons. All securities transactions involve risks, which include (among others) the risk of adverse or unanticipated market, financial or political developments.

To the fullest extent permitted by law, First Au Limited (**the Company**) does not make any representation or warranty, express or implied, as to the accuracy or completeness of any information, statements, opinions, estimates, forecasts or other representations contained in this presentation. No responsibility for any errors or omissions from this presentation arising out of negligence or otherwise is accepted.

This presentation may include forward looking statements. Forward looking statements are only predictions and are subject to risks, uncertainties and assumptions which are outside the control of the Company. These risks, uncertainties and assumptions include commodity prices, currency fluctuations, economic and financial market conditions in various countries and regions, environmental risks and legislative, fiscal or regulatory developments, political risks, project delay or advancement, approvals and cost estimates. Actual values, results or events may be materially different to those expressed or implied in this presentation. Given these uncertainties, readers are cautioned not to place reliance on forward looking statements. Any forward looking statements in this presentation speak only at the date of issue of this presentation. Subject to any continuing obligations under applicable law and the ASX Listing Rules, the Company does not undertake any obligation to update or revise any information or any of the forward looking statements in this presentation or any changes in events, conditions or circumstances on which any such forward looking statement is based.

## **ASX Listing Rule Compliance**

In accordance with Listing Rule 5.23.2, the Company confirms in this subsequent public report that it is not aware of any new information or data that materially affects the information included in any previous market announcements and, in the case of estimates of mineral resources or ore reserves (if any), that all material assumptions and technical parameters underpinning the estimates in any previous market announcements continue to apply and have not materially changed.

## **Competent Person Statement**

The information in this presentation that relates to Exploration Results is based on information compiled by Dr Gavin England, a Competent Person who is a Member of the Australasian Institute of Mining and Metallurgy. Dr England is a consultant to First Au Limited. Dr England has sufficient experience that is relevant to the style of mineralisation and type of deposit under consideration and to the activity being undertaken to qualify as a Competent Person as defined in the 2012 Edition of the 'Australasian Code for Reporting of Exploration Results, Mineral Resources and Ore Reserves'.

The information in this report that relates to the Mineral Resource Estimate is based on information compiled Andrew Bewsher, who is an employee and director of BM Geological Services, acting as a consultant for FAU. Mr Bewsher is a member of the Australian Institute of Geoscientists and has sufficient experience relevant to the style of mineralisation and type of deposit under consideration, and the activity undertaken, to qualify as a Competent Person as defined in the 2012 Edition of the Australasian Code for Reporting of Exploration Results, Mineral Resources and Ore Reserves.

Dr England and Mr Bewsher consents to the inclusion in the report of the matters based on their information in the form and context in which it appears.



# First Au Snap Shot



- **FAU.ASX** lists June 2018 (from PHA.ASX) and raises \$5.3m
- **Maiden drilling program** in Oct 2018 at Flagship Gimlet Project near Kalgoorlie, makes new Au discovery
  - best intersection of **3m @ 462 g/t Au from 54m<sup>#</sup>**
- Continued drilling at Gimlet, mineralised system identified, **Maiden JORC Resource 68,731 oz Au ~**
- **Mining Lease** Application submitted at Gimlet<sup>+</sup>
- **FAU Pilbara exploration** projects focus on Au and base metal -
  - Potential new VMS system identified
  - Shear-hosted gold, drill ready target
  - FAU conglomerate gold story to emerge in 2019



Drilling at Gimlet, near Kalgoorlie, March 2019

# Corporate - First Au Limited (ASX: FAU) as of 30/04/19



Ordinary Shares on issue (m)	260
Share Price	2.0
Listed Options (m)	213
Market Capitalization (@ 2.0 cents)	\$5.2m
Cash Position	\$2.5
Debt	nil



Tambina in the Pilbara, April 2019

Board	Senior Management
<b>Bryan Frost</b> , Executive Chairman	<b>David McBain</b> , Company Secretary and CFO
<b>Richard Revelins</b> , Executive Director	<b>Dr Gavin England</b> , Exploration Manager
<b>Damon O'Meara</b> , Non-Executive Director	<b>Brian Richardson</b> , Consulting Geologist
<b>Michael Quinert</b> , Non-Executive Director	

## Gimlet Gold Project (100% owned)

- Archean orogenic-gold, associated with N-NW trending Abattoir Shear Zone
- Located 15kms northwest of the world renowned Kalgoorlie Goldfields
- Easy trucking distance for toll treatment
- 400m along strike of Intermin Resources (ASX: IRC) Teal Gold Mine (~ 289,000 oz Au)
- FAU maiden aircore programs in July and September 2018 (6768 m)<sup>#</sup>
- Followed by RC program in November 2018 (1901 m)<sup>\*</sup> and RC/Diamond program in March 2019 (2900m)<sup>+</sup>



# Gimlet Significant RC drilling intersections



## November 2018\*

**Drillhole 18GRC016 – 13m @ 8.2 g/t Au from 67m**

**Drillhole 18GRC017 – 31m @ 2.1 g/t Au from 48m**

Drillhole 18GRC002 – 15m @ 3.4 g/t Au from 64m

**Drillhole 18GRC007 – 21m @ 2.5 g/t Au from 138m**

Drillhole 18GRC006 – 9m @ 3.5 g/t Au from 43m

Drillhole 18GRC019 – 5m @ 7.8 g/t Au from 63m

## March 2019#

**Drillhole 19GRC013 – 15m @ 7.2 g/t Au from 93m**

**Drillhole 19GRC015 – 26m @ 3.1 g/t Au from 90m**

Drillhole 19GRC018 – 9m @ 1.3 g/t Au from 41m

Drillhole 19GRC019 – 5m @ 3.9 g/t Au from 89m

**Drillhole 18GRC022 – 4m @ 18.8 g/t Au from 38m**

Drillhole 19GRC023 – 18m @ 1.2 g/t Au from 62m

Drillhole 19GRC024 – 6m @ 2.9 g/t Au from 32m

Drillhole 19GRC025 – 11m @ 4.0 g/t Au from 99m

Drillhole 19GRC029 – 16m @ 1.2 g/t Au from 53m

**Drillhole 19GRC030 – 15m @ 6.6 g/t Au from 157m**





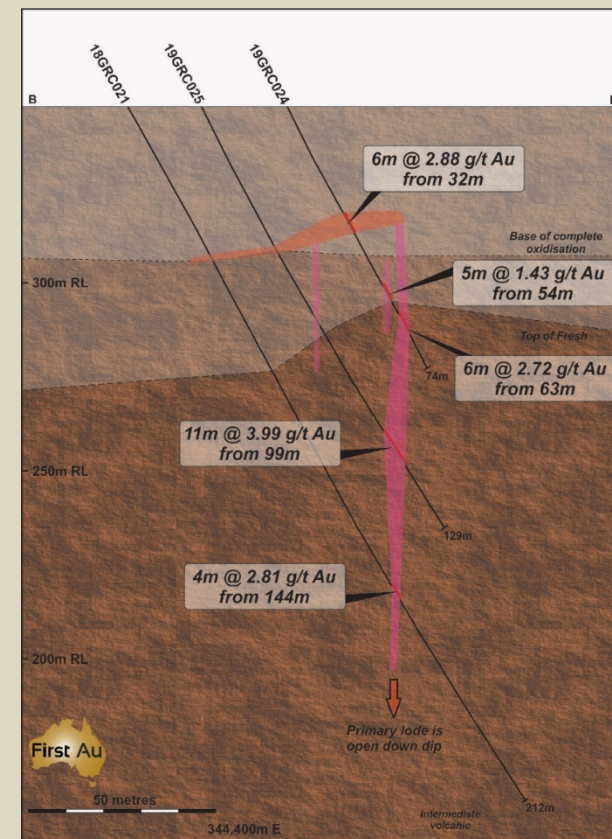
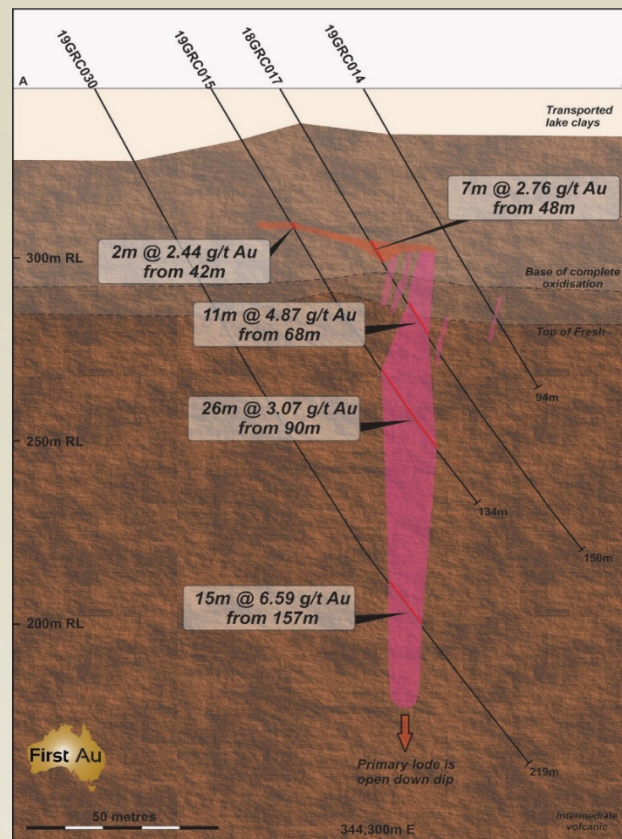
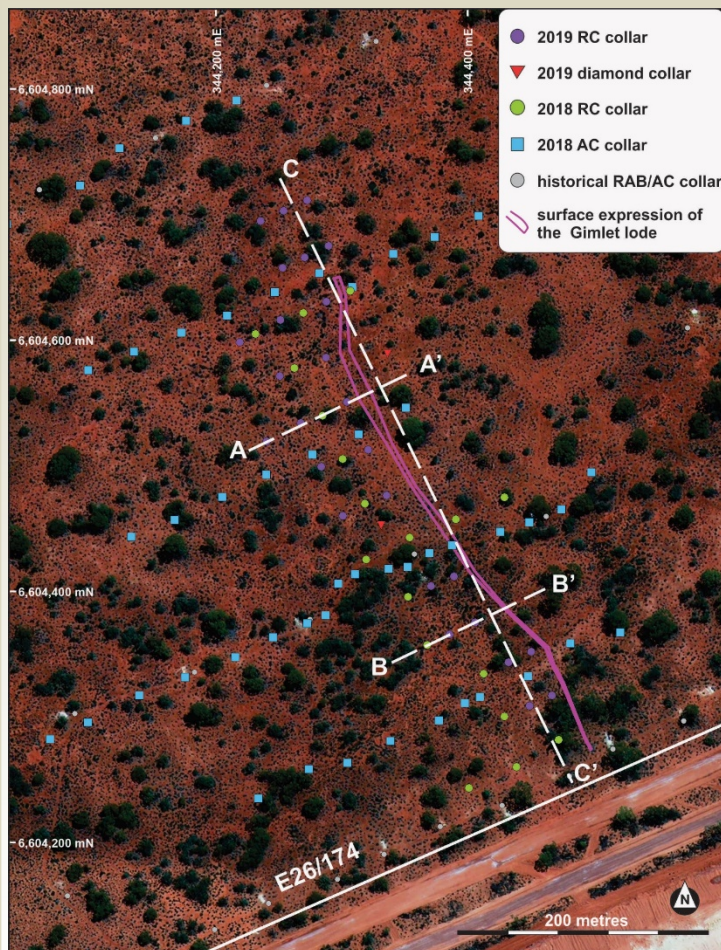
## Gimlet Gold Project Mineralisation<sup>\*+~</sup>

- Drilling now identified mineralisation over ~ 450m strike and 150m depth
- Mineralisation open to the north and down dip
- Mineralisation evident as
  - supergene blanket
  - Vertical lode mineralisation, shear hosted in intermediate volcanics (Black Flag Group), containing veins / stringers of quartz and sulphides

### Inferred Mineral Resource Estimate - April 2019~

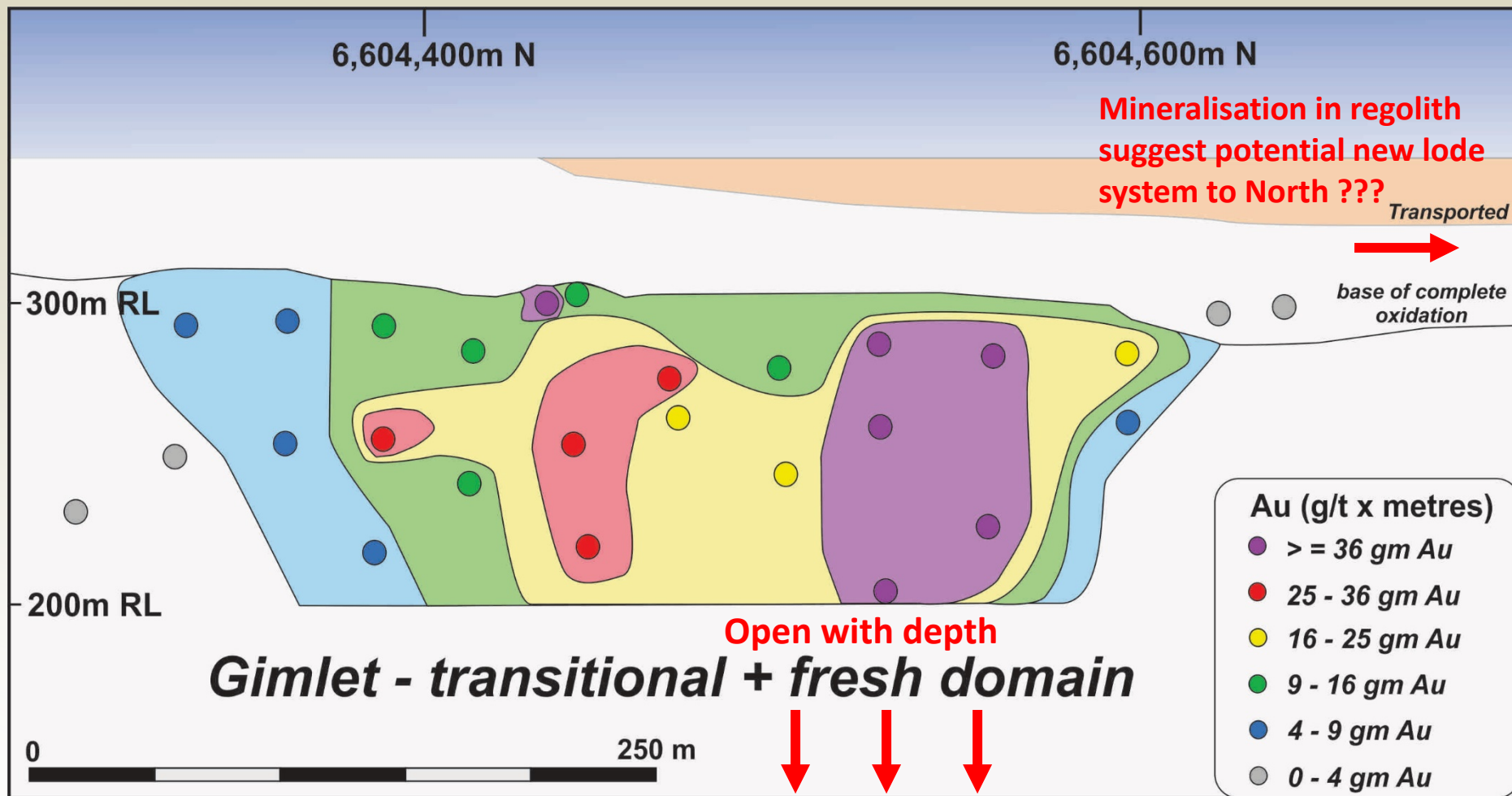
	Tonnes	Grade (g/t Au)	Ounces
<b>Oxide</b>	75,034	3.32	8,007
<b>Transitional</b>	65,495	3.04	6,406
<b>Fresh</b>	501,830	3.37	54,308
<b>Total</b>	<b>642,359</b>	<b>3.33</b>	<b>68,731</b>

# Gimlet Gold Cross Sections from recent RC drilling



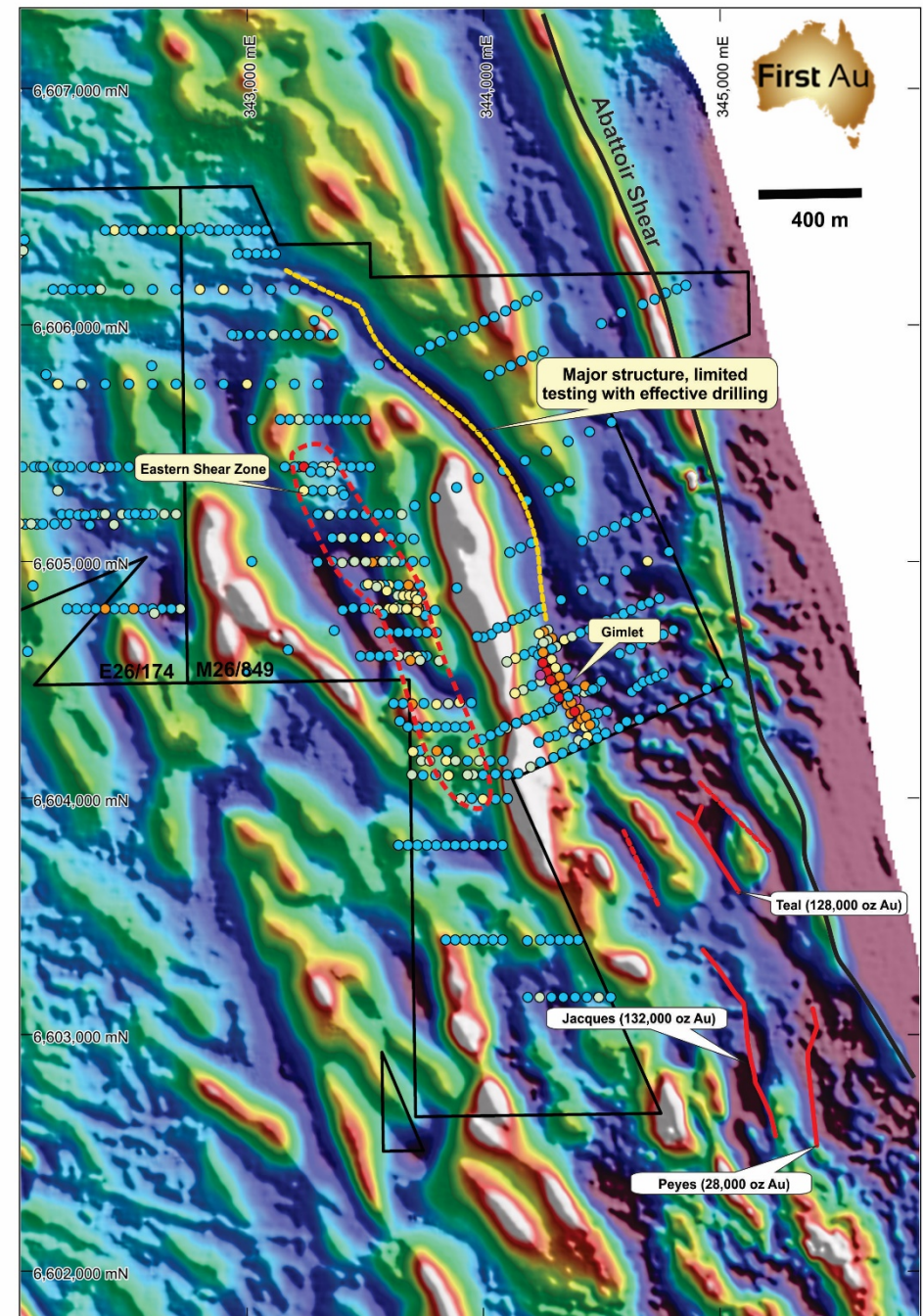


# Gimlet Lode Gold Long Section C-C'\*



# Gimlet Potentially Part of a Major Mineralised System

- Abattoir Shear potential major Au conduit
- Peyes-Jacques-Teal (IRC.ASX) and Gimlet mineralised system > 2.5 km strike length
- Exploration has limited effective drill testing often due to lake sediments
- Eastern Shear Zone is a potential parallel Structure, with anomalous Au in Aircore drilling\* in regolith over 3.5 km strike,
- Intersections include—
  - 1 m @ 14.2 g/t Au
  - 1 m @ 17.1 g/t Au
  - 1 m @ 10.5 g/t Au
  - 1m @ 7.0 g/t Au
- Underlying lode style Au yet discovered





# Archean Pilbara Projects – Focus on Gold and Base metals



## Emu Creek Project (earn 70%)

- Gold and base metals, VMS and porphyry-related, conglomerate gold

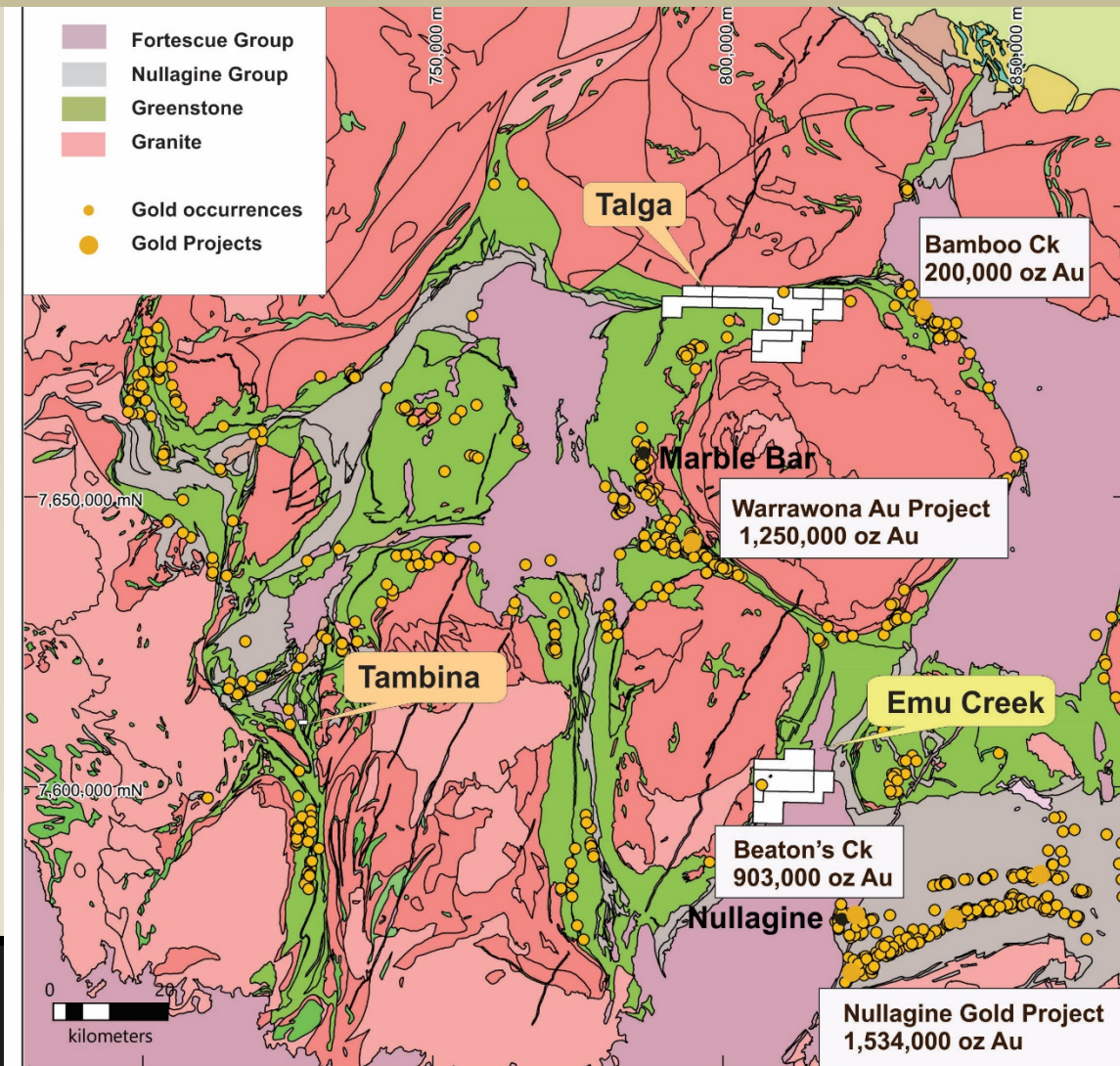
## Talga Project (100%)

- Shear hosted gold, VMS-style copper-gold

## Tambina JV (earn 80%)

- Conglomerate Gold

Marble Bar and Nullagine regions has long history of gold mining





# Emu Creek Project\* - VMS targets

---



- 120km<sup>2</sup>, located 23km northwest of Nullagine
- Volcanic vents identified within mafic and felsic rocks of Archaean Kelly Greenstone Belt – evident in the field and from hyperspectral mapping
- VTEM survey completed in 2018, 8 conductor anomalies identified and yet explained
- Cu in historic stream anomalies evident, yet to be explained
- Late 2018 fire cleared thick spinifex scrub for first time in 15 years
- 2019 Field season commenced

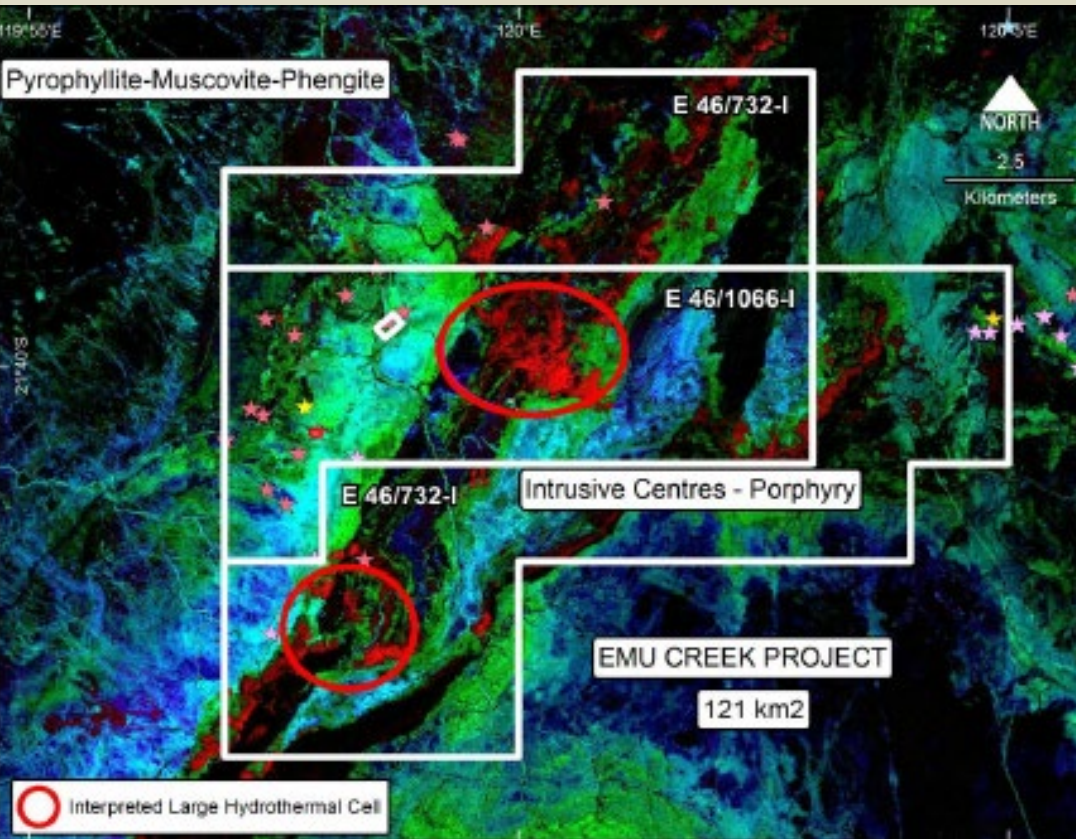


Burnt landscape of Emu Creek in Pilbara, Oct 2018

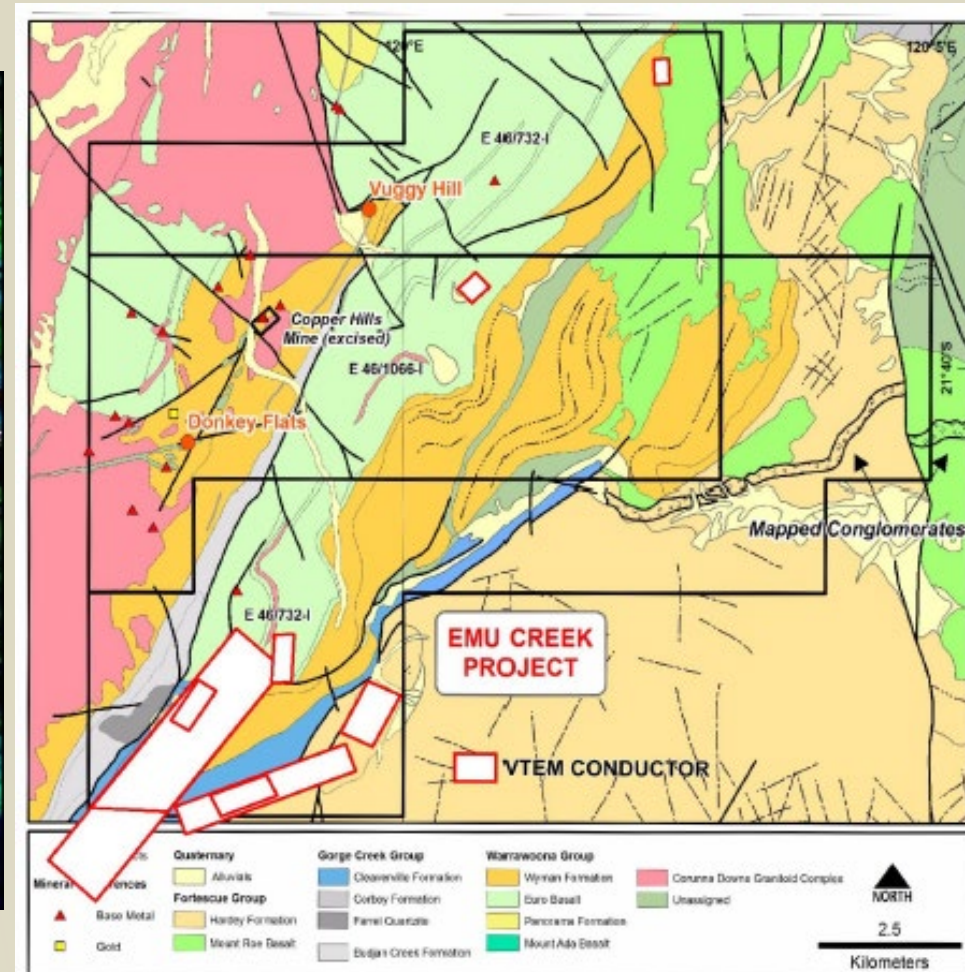
# Emu Creek – Coincidental VTEM hyperspectral Anomalies



Hyperspectral imagery  
identifying hydrothermal cell



VTEM anomalies



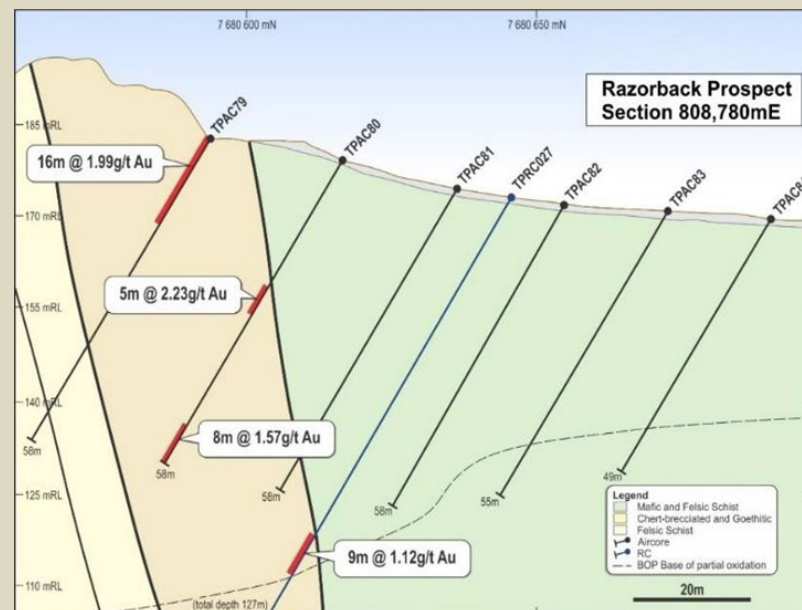


# Talga Project - Archean Gold at Razorback \*



- 207.9km<sup>2</sup>, located 35 kms NE of Marble Bar
- Geologically along strike from Bamboo Creek Mining Centre (mined 779,350 T @ 8.15 g/t Au from 1897 – 1995)
- Aeromagnetic survey completed mid 2018
- Razorback Prospect area key target-
  - Sheared Archean BIF/ basalt, new mineralised BIFs identified (similar target style to Warrawoona 1.25 M Oz Au Project, ASX: CAI)
  - Rock assays up to **12.9 g/t Au**, numerous nuggets recently discovered
  - Previous limited RC drilling returned **16m @ 2 g/t Au** from surface, with mineralisation remaining open
  - 300 m long Au in soil anomaly, untested

Razorback Prospect cross section





# Emerging Conglomerate Gold Story



- **Tambina JV - earn 80% interest (West Wits Mining; ASX: WWI)\***
  - 3 Mining Leases (105 Ha), 150Km SE of Port Hedland
  - 1300m strike length of basal conglomerate containing “buckshot pyrite”
  - Similar stratigraphic position to Purdy Creek Prospect (Novo Resource / Artemis Resources JV)
  - Previous rockchip by WWI show values up to 185 g/t Au\*
  - **FAU will assess potential for small-scale mining**
- **Emu Creek JV – earn 70% interest (Atlas Iron / Hancock Prospecting)#**
  - Untested conglomerate in lower Hardy Fm, similar stratigraphic position to Beaton Creek Deposit (900,000 oz Au; Nov.CN)
  - Potential 10km strike length requires exploring



Weathered “buckshot pyrite” in conglomerate, Tambina



Mapped Hardy Fm conglomerate, Emu Creek

# News Flow – next 6 months

---



- Forge ahead with exploration at Gimlet -
  - **May-** Scoping study, including metallurgy, geotechnical, mining
  - **June** - Aircore drilling of new targets, expand mineralised footprint
  - **July** – IP survey
  - **July / August-** RC drilling down dip and chase leads for extension of Resource
- Pilbara exploration season underway, with “boots-on ground” approach -
  - **May to September** – Follow up geochemical anomalies, gossan search, hyperspectral and VTEM targets at Emu Creek and Talga
  - **June/July** - Helicopter reconnaissance of remote targets
  - **May / June** – trench sampling and scoping study for small scale mining at Tambina
  - Drilling planned for Razorback Gold at Talga and Emu Creek – end of field season
- Project evaluation - expand portfolio in both Pilbara and Kalgoorlie regions with good projects



# Thank you

## Contacts

### **Bryan Frost**

Mobile : +61 418 898 885

Email: [bfrost@firstau.com](mailto:bfrost@firstau.com)

### **Richard Revelins**

Mobile: +61 418 534 737

Email: [rrevelins@firstau.com](mailto:rrevelins@firstau.com)