

RECTIFIER TECHNOLOGIES LTD  
RFT

*Annual General Meeting 2020*

-Business Outlook -

---

# Disclaimer

This document is not a Prospectus nor an Offer to Subscribe for Shares

RT Ltd and its subsidiaries (“RT”) makes no representations or warranty (expressed or implied) as to the accuracy, reliability or completeness of this document. RT and its respective directors, employees, agents and consultants shall have no liability (including liability to any person by reason of negligence or negligent misstatement) for any statements, opinions, information or matters (expressed or implied) arising out of, or contained in or derived from, or for any omissions from this document, except liability under statute that cannot be excluded.

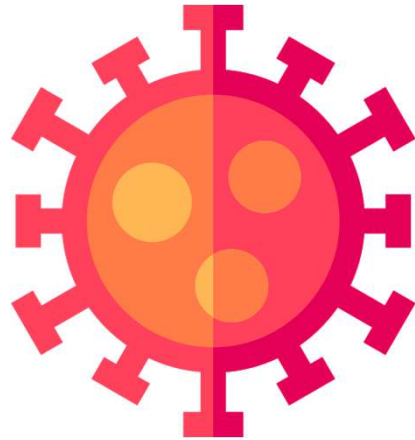
This document contains reference to certain forecasts, projections, intentions, expectations and plans of RT, which may or may not be achieved. They are based on certain assumptions which may not be met or on which views may differ.

The performance and operations of RT may be influenced by a number of factors, uncertainties and contingencies many of which are outside the control of RT and its directors.

No representation or warranty (expressed or implied) is made by RT or its respective directors, officers, employees, advisers or agents that any forecasts, projections, intentions, expectations or plans set out in this document will be achieved, either totally or partially, or that any particular rate of return will be achieved.

---

2020



Coronavirus



Lockdown

# Job Losses

**The coronavirus is expected to have cost 400 million jobs in the second quarter, UN labor agency estimates**

PUBLISHED TUE, JUN 30 2020 9:00 AM EDT



Vicky McKeever  
@VMCKEEVERCNBC

<https://www.cnn.com/2020/06/30/coronavirus-expected-to-cost-400-million-jobs-in-the-second-quarter.html>

Tesla announced this week that all "non-essential workers" would be furloughed and other employees would be hit with salary cuts starting April 13. Reuters is reporting that those pay cuts—10 percent for workers, 20 percent for directors, and 30 percent for vice-presidents—will continue through the end of June.

<https://www.caranddriver.com/news/a32083482/automakers-layoffs-coronavirus/>

**CAR AND DRIVER**

## Details of Increasing Plant Shutdowns amid COVID-19 Pandemic

Plant closures are expanding across the U.S., impacting both the domestic and foreign automakers.



BY COLIN BERESFORD MAR 25, 2020

# Impacts on supply chains

FINANCIAL TIMES

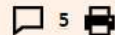
## Global chip shortage puts car supply chain under the microscope

Severe shortage of key supplies risks becoming recurring crisis for motor industry



Car executives are seeking government help in a bid to see if the supply of chips can be accelerated © FT montage; Bloomberg

Kana Inagaki in Tokyo, David Keohane in Paris, Yuan Yang in Beijing and Joe Miller in Frankfurt 3 HOURS AGO



## A Massive Chip Shortage Is Hitting the Entire Semiconductor Industry

By Joel Hruska on December 21, 2020 at 11:15 am

TECHNOLOGY

## Booming demand for PCs and phones squeezes tech supply chain

Companies scramble to secure capacity amid shortages of key chip components

CHENG TING-FANG and LAULY LI, Nikkei staff writers  
December 9, 2020 12:25 JST

Electronic component shortages have been a hindrance on a booming electronics marketplace throughout 2018, 2019, and into 2020. While new orders roll in and production remains steady, there simply **haven't been enough capacitors, resistors and other parts** to go around.

<https://blog.matric.com/electronic-component-shortages-update>

# Challenges Ahead

## Market recovery after Covid-19



## Global Shortage

@RFT

Strong Business  
Fundamentals



**RECTIFIER**  
TECHNOLOGIES

***End of 2019***

New R&D Facility  
New Factory

***Capital Investments***

R&D  
Production

No retrenchments  
or furloughs

Welcomed  
new engineers  
to the team

# Our future is DC



**Public Charging**  
Long Distance Driving  
~50kW – 350kW



**Private Charging**  
Home/Workplace  
~11kW



**Fleet Charging**  
Long/Short Distance Driving  
~11kW – 350kW

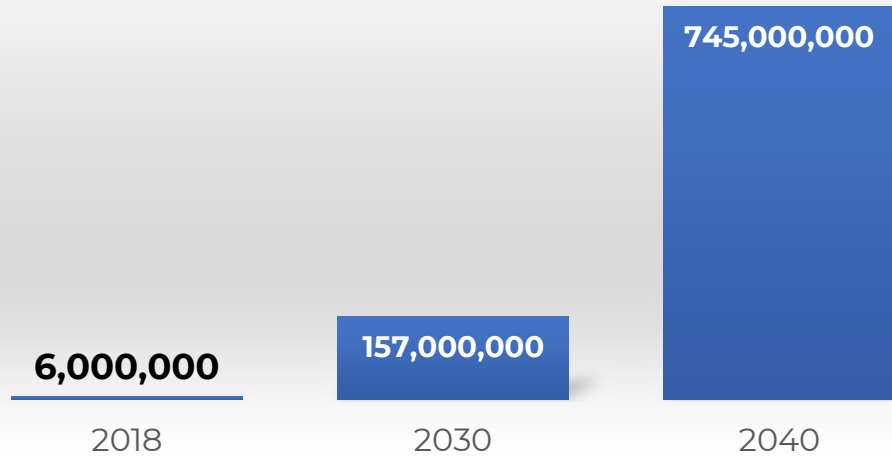




**Public Charging**  
Long Distance Driving  
~50kW – 350kW



## EV Growth Paris Agreement Aligned Scenario



CAGR<sub>dc fast charger</sub>  
**10-30%**

# MCS

Megawatt Charging System

1500VDC | 3000A

# CHAOJI

900kW

## Strategically modularized for High Power Charging



50kW



150kW



250kW



350kW

RT22 50kW Charger Module

**MADE TO LAST**

More than just reliable power supplies



**RECTIFIER  
TECHNOLOGIES**

# Our future is DC



**Public Charging**  
Long Distance Driving  
~50kW – 350kW



**Fleet Charging**  
Long/Short Distance Driving  
~11kW – 350kW

~80%

An illustration of a black car with a battery icon on its side and the letters "OBC" in a yellow box. The car is shown from a side profile.

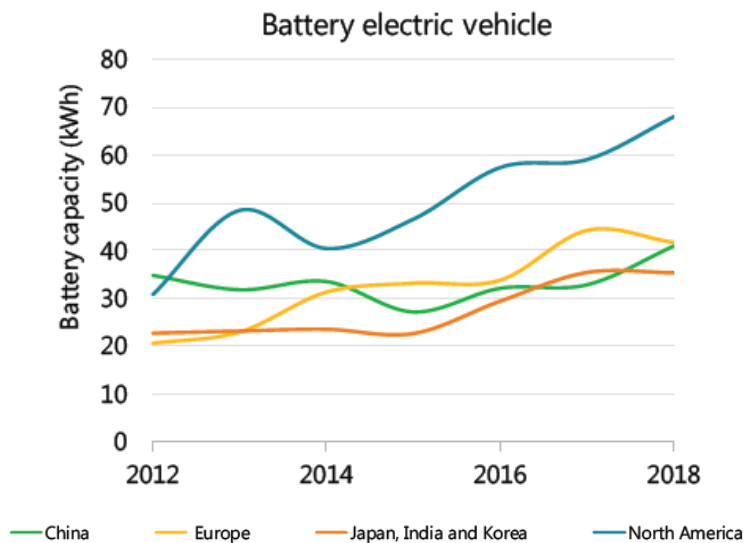
*back in the day  
tiny battery*

**Private Charging**  
Home/Workplace  
~11kW

Low Power  
DC

A green 3D arrow pointing from the power tower towards the car. The arrow is labeled "BI-DIRECTIONAL".

# Battery capacity on the rise



Battery Capacity  
**increased 250%** since 2012

Typical Full Charge – **480 km**  
Avg Daily Commute - **65 km**

Sources: Data for 2012-15 are based on IHS Markit (2019), 2016-17 on Marklines (2019) and 2018 on EV Volumes (2019).



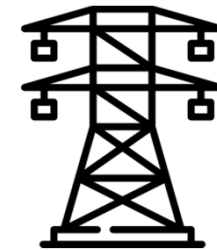
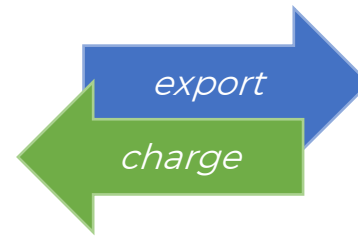
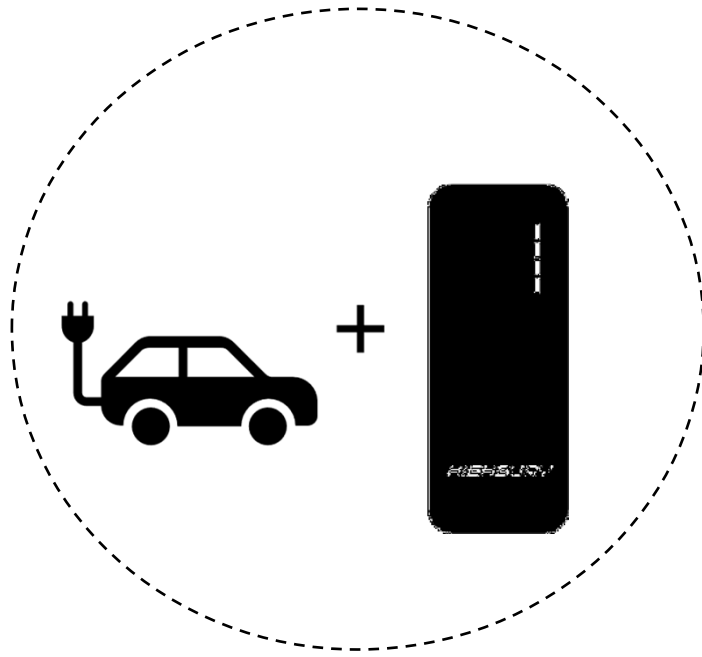
***HIGHBURY DC***  
*Bi-Directional*

Low Power  
DC



*World's Slimmest Bi-directional DC Charger*

# Vehicle-2-Grid (V2G)



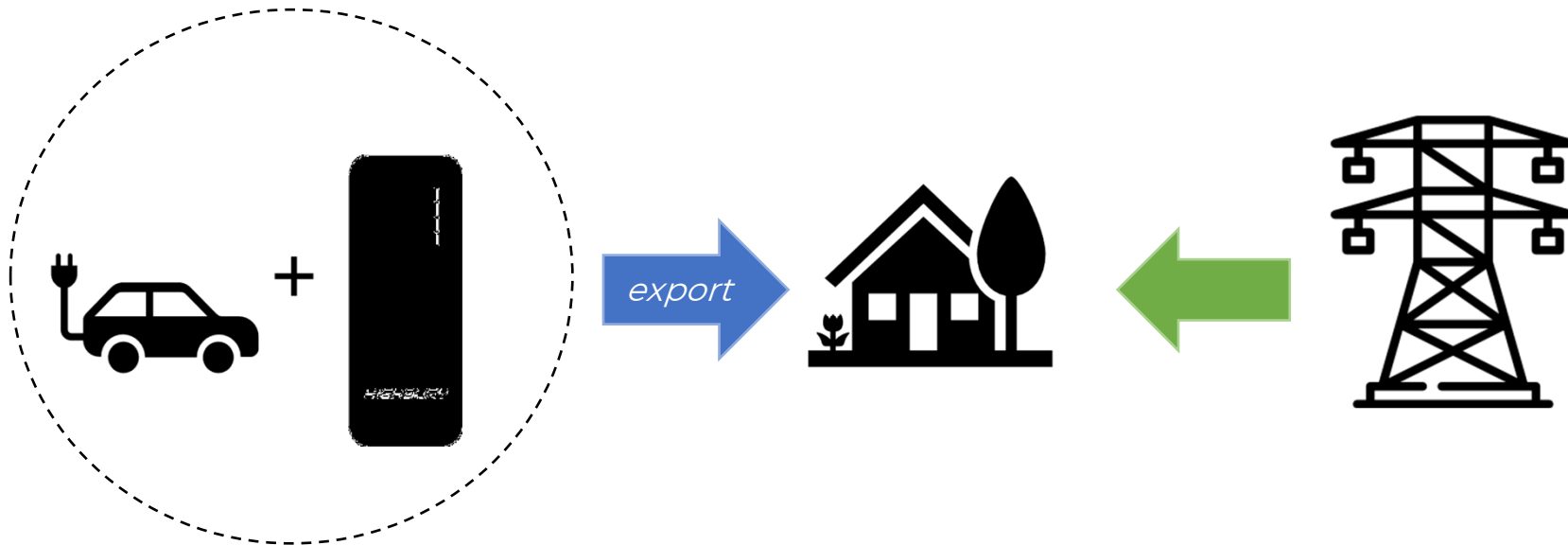
Collaboration  
in trials

CHAdeMO – **Q4 2021**

CCS – **Q4 2021 \***

*\*Dependant on publication of ISO 15118-20*

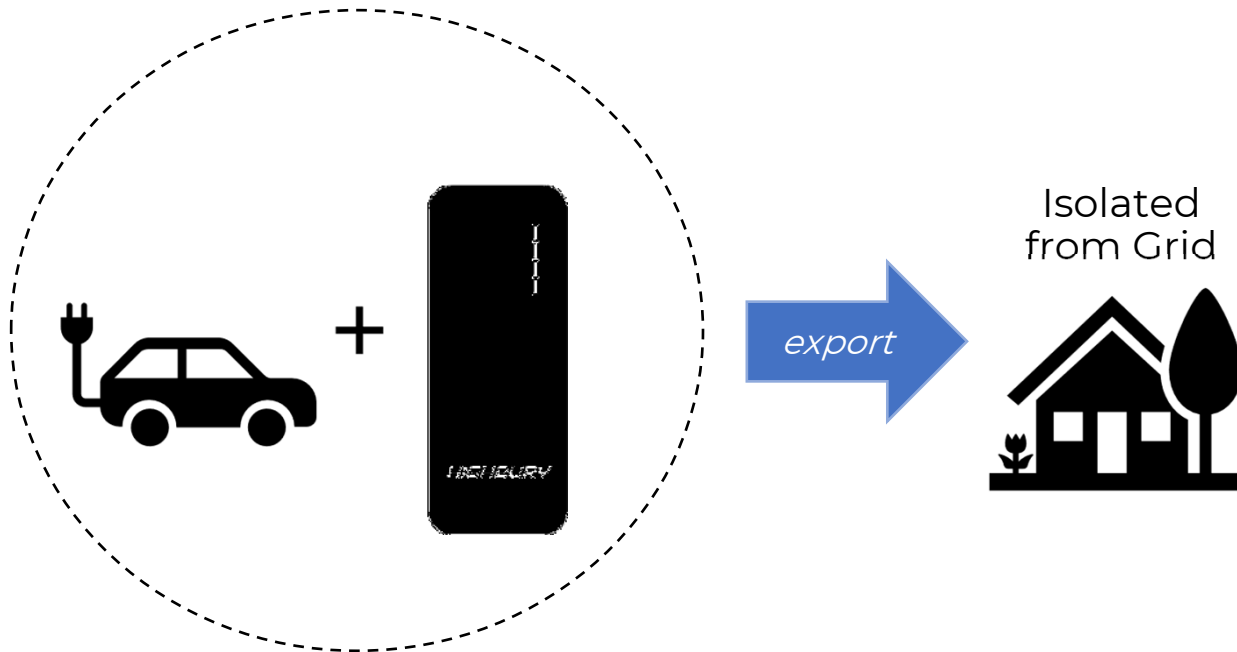
# Vehicle-2-Home (V2H)



Around **3 - 4 days** worth of energy stored in your EV

Availability - TBD

# Vehicle-2-Home (V2H) *Islanding*



Powering your house from your EV completely.

Availability - TBD



# Other Activities (Marketing)

**RT22 50kW** Campaign

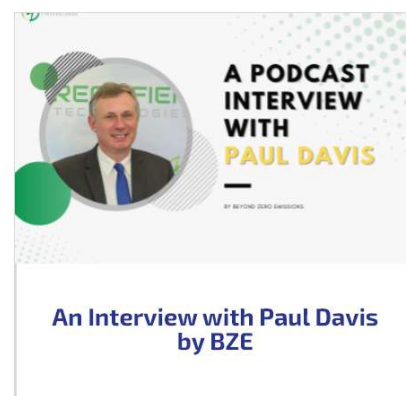
**HIGHBURY DC** Campaign

**AEVA** EV Vision 2020

**iEVTech** 2020 e-Conference

**BZE** Podcast

**CharIN Asia** Virtual Conference



# Other Activities



Memberships

Other Projects

Defence power-supply  
Wind turbine power-supply  
Smart charger interface

Partnerships in app development & protocol stacks

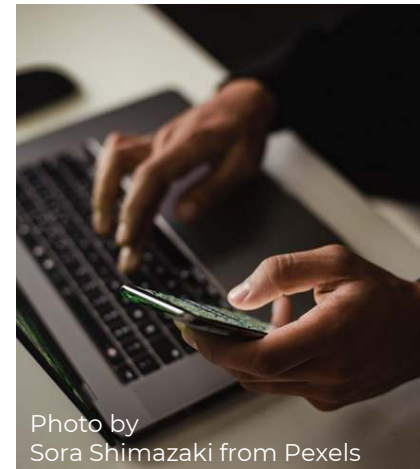


Photo by Sora Shimazaki from Pexels



Thank You



Authorised by Yanbin Wang, CEO