



---

# Half Year Result – 1H21

## Analyst and Investor Presentation

February 2021



# Disclaimer

This presentation has been prepared by Midway Limited ACN 005 616 044 (**Midway** or the **Company**). The information contained in this presentation is current at the date of this presentation. The information is a summary overview of the current activities of the Company and does not purport to be all inclusive or to contain all the information that a prospective investor may require in evaluating a possible investment. It is to be read in conjunction with the Company's disclosures lodged with the Australian Securities Exchange, including the Company's Appendix 4D for the half year ended 31 December 2020 lodged with the Australian Securities Exchange on 24 February 2021. The material contained in this presentation is not, and should not be considered as, financial product or investment advice. This presentation is not (and nothing in it should be construed as) an offer, invitation, solicitation or recommendation with respect to the subscription for, purchase or sale of any security in any jurisdiction.

This presentation is not intended to be relied upon as advice to investors or potential investors and does not take into account the investment objectives, financial situation or needs of any particular investor which need to be considered, with or without professional advice, when deciding whether or not an investment is appropriate. This presentation contains information as to past performance of the Company for illustrative purposes only, and is not – and should not be relied upon as – an indication of future performance of the Company.

To the maximum extent permitted by law, Midway makes no representation or warranty (express or implied) as to the accuracy, reliability or completeness of any information contained in this document. To the maximum extent permitted by law, Midway will have no liability (including liability to any person by reason of negligence or negligent misrepresentation) for any statements, opinions or information (express or implied), arising out of, contained in or derived from, or for any omissions from this document.

## Forward looking statements

This document contains certain “forward-looking statements”. The words “anticipate”, “believe”, “expect”, “project”, “forecast”, “estimate”, “outlook”, “upside”, “likely”, “intend”, “should”, “could”, “may”, “target”, “plan” and other similar expressions are intended to identify forward-looking statements. Indications of, and guidance on, future earnings and financial position and performance, including Midway's financial outlook, are also forward-looking statements, as are statements regarding Midway's plans and strategies and the development of the market. Such forward-looking statements are not guarantees of future performance and involve known and unknown risks, uncertainties and other factors, many of which are beyond the control of Midway, which may cause actual results to differ materially from those expressed or implied in such statements. Midway cannot give any assurance or guarantee that the assumptions upon which management based its forward-looking statements will prove to be correct or exhaustive, or that Midway's business and operations will not be affected by other factors not currently foreseeable by management or beyond its control. Such forward-looking statements only speak as at the date of this document and Midway assumes no obligation to update such information.

## Non-IFRS information

This presentation includes certain financial measures that are not recognised under Australian Accounting Standards (AAS) or International Financial Reporting Standards (IFRS). Such non-IFRS financial measures do not have a standardised meaning prescribed by AAS or IFRS and may not be comparable to similarly titled measures presented by other entities, and should not be construed as an alternative to other financial measures determined in accordance with AAS or IFRS. Recipients are cautioned not to place undue reliance on any non-IFRS financial measures included in this presentation. The non-IFRS information has not been subject to audit or review by Midway's external auditor.

All references to dollars are to Australian currency unless otherwise stated.

The background of the slide features a photograph of a logging operation. A large excavator with a grapple attachment is lifting a bundle of cut logs. The scene is set in a forest with many tall, thin trees. The entire image is covered with a semi-transparent green overlay.

# Financials 1H21

Midway

# Overview

## 1H21 Results

- EBITDA – S<sup>1</sup> of **\$7.1M** (1H20: \$4.2M) on the back of stronger sales volumes
- Underlying net profit after tax before significant items of **\$0.5M** (1H20: -\$1.2M)
- Significant items after tax include \$1.2M of Job Keeper and a net reduction in the value of biological assets of \$2.0M
- Strong operating cashflow **\$1.5M<sup>2</sup>** (1H20: -\$9.1M)
- Board has decided not to pay a dividend in 1H21

## Improving market conditions

- Global market recovery leading to higher pulp prices in 2021
- China pulp stocks have been trending back towards normalised levels
- Exports from Australia expected to continue to recover in 2021 due to increasing demand and proximity to market
- New Chinese pulp mill capacity coming online will drive increased demand
- Japanese consumption expected to return to pre COVID-19 levels in 2021

1: EBITDA – S represents EBITDA before significant items and net fair value increment on biological assets.

2: Revenue from two vessels sold as at 31 December was not received until after period end, which would have increased operational cashflow by \$11.3M

Revenue  
\$150.9M  
+22.6%

EBITDA-S<sup>1</sup>  
\$7.1M  
+69.1%

Gearing  
ratio 27%

Midway

## Financial Performance – 1H21

\$Am	1H21	1H20	% Change	
Sales Revenue	150.9	123.0	22.6%	↑
Other Income	1.2	4.5	(73.4%)	↓
Equity Accounted Share of Profits	(1.1)	2.4	(145.8%)	↓
Operating Costs**	(143.9)	(125.7)	(14.4%)	↓
EBITDA – S <sup>(1)</sup>	7.1	4.2	69.1%	↑
Significant Items <sup>(2)</sup>	1.5	(8.6)	117.4%	↑
AASB 16 impact	1.0	0.9	11.1%	↑
Net Fair Value Gain/(Loss) on Biological Assets	(2.9)	12.9	(122.5%)	↓
Statutory EBITDA	6.7	9.4	(28.8%)	↓
Statutory EBIT	1.1	2.6	(57.7%)	↓
Finance Expense <sup>(3)</sup>	(2.6)	(1.8)	(44.4%)	↓
Pre-tax Profit	(1.4)	0.8	(275.0%)	↓
Tax Expense	0.1	0.2	(50.0%)	↓
Statutory NPAT	(1.3)	1.0	(230.0%)	↓

1: EBITDA-S represents EBITDA before significant items and net fair value increment on biological assets.

2: Significant items in 1H20 includes PMP impairment of \$6.5M, write off ADDCO investment of \$2.1M.

3: Includes of non cash net interest expense incurred on the liability created on 1 July 2018 to repurchase trees under the Strategy arrangement, which was deemed a financing arrangement upon the adoption of AASB 15 Revenue from Contracts with Customers.

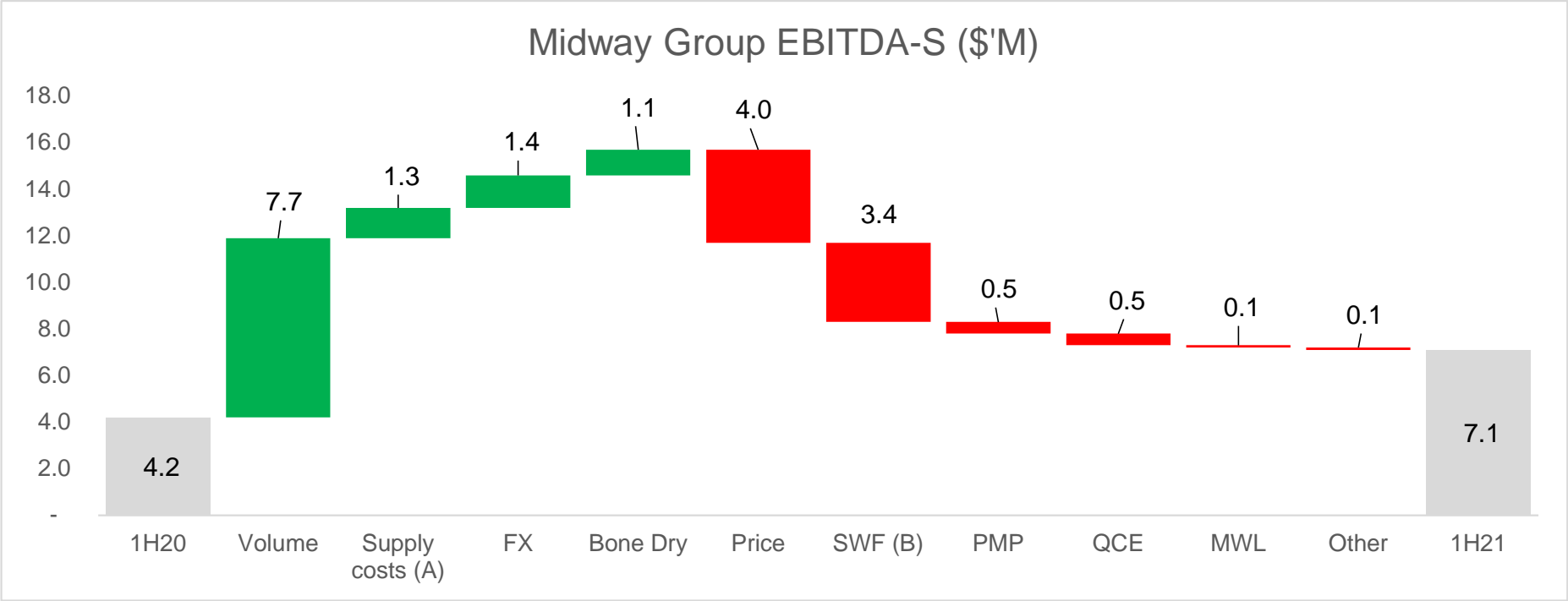
\*\* Reflects additional purchases of raw materials to meet increased sales volume

## Cash Flow – 1H21

\$Am	1H21	1H20	\$Am Change
Operating Cash Flow	1.5	(9.1)	10.6
Investing Cash Flow	(2.1)	(2.4)	0.3
Financing Cash Flow	(2.4)	3.7	(6.1)
Net Change in Cash	(3.0)	(7.8)	4.8
Net Debt <sup>(1)</sup>	41.6	55.4	(13.8)
Interest Cover	8.1	14.9	

(1) Net debt excludes the Strategy financial liability as this is not taken into account for debt covenant calculations.

# Financial Performance – 1H21



(A) Most supply costs are linked to the USD FOB pricing and they are adjusted typically annually and accordingly there is a lag between sales prices and supply costs.  
(B) The temporary shut down of the SWF Myamyn Mill in southwest Victoria due to the serious market downturn, however has now reopened.



## Balance Sheet – 1H21

\$Am	31/12/2020	30/06/2020	\$Am Change
Total Current Assets	62.9	54.8	8.1
Total Non-current Assets	198.8	205.8	(7.0)
Total Assets	261.7	260.6	1.1
Total Current Liabilities	41.9	41.4	0.5
Non-current Borrowings <sup>(1)</sup>	35.9	38.9	(3.0)
Total Non-current Liabilities	84.9	89.1	(4.2)
Total Liabilities	126.8	130.5	(3.7)
Net Assets	134.9	130.1	4.8

(1) Excludes Strategy arrangement.





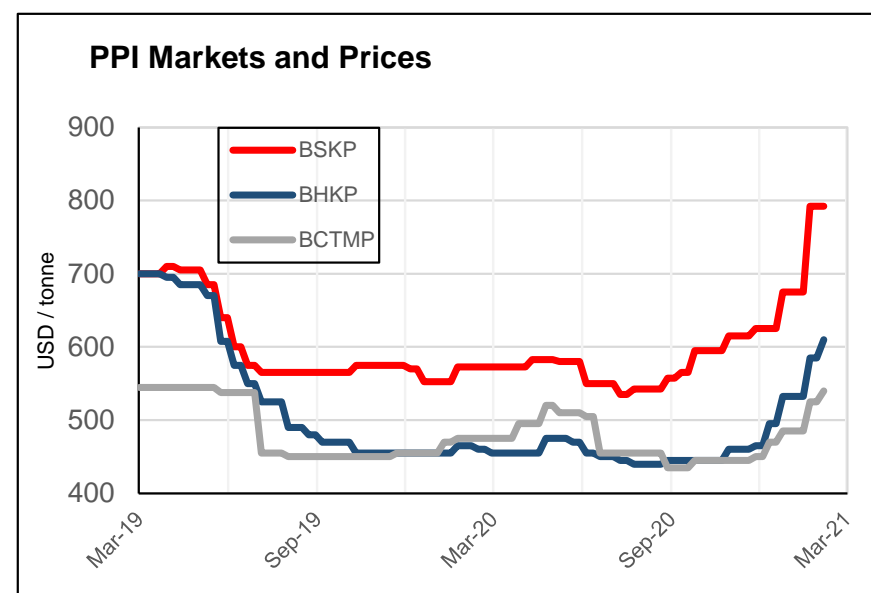
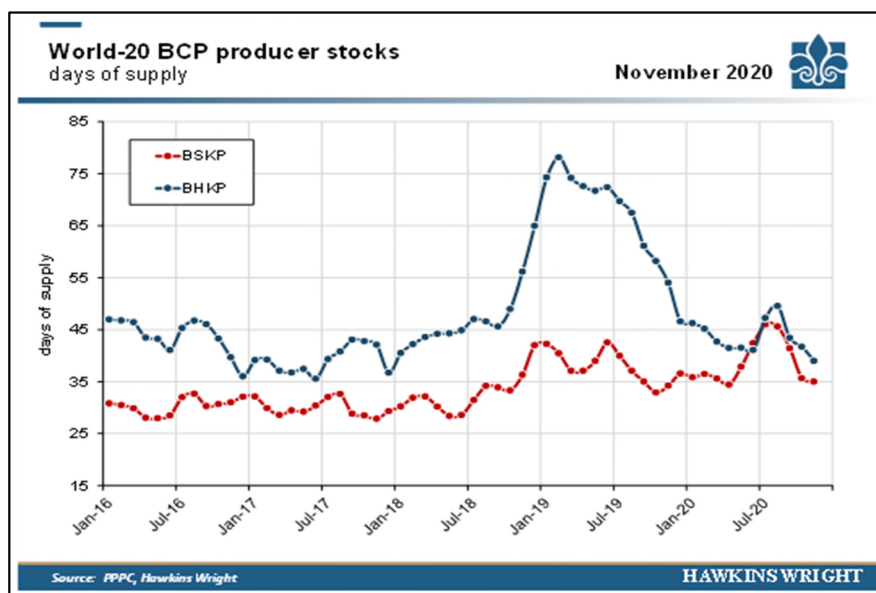
# Trading Conditions

Midway

# Global Pulp and Paper Market

## Market and stocks normalisation driving price recovery

- Strong tissue demand and single use plastic replacement driving woodfibre demand.
- Latest (05/02/21) prices BHKP (hardwood pulp) \$620/ADT and BSKP (softwood pulp) \$810/ADT.
- Dissolving pulp prices recovering back to towards 2017 - 2018 levels.



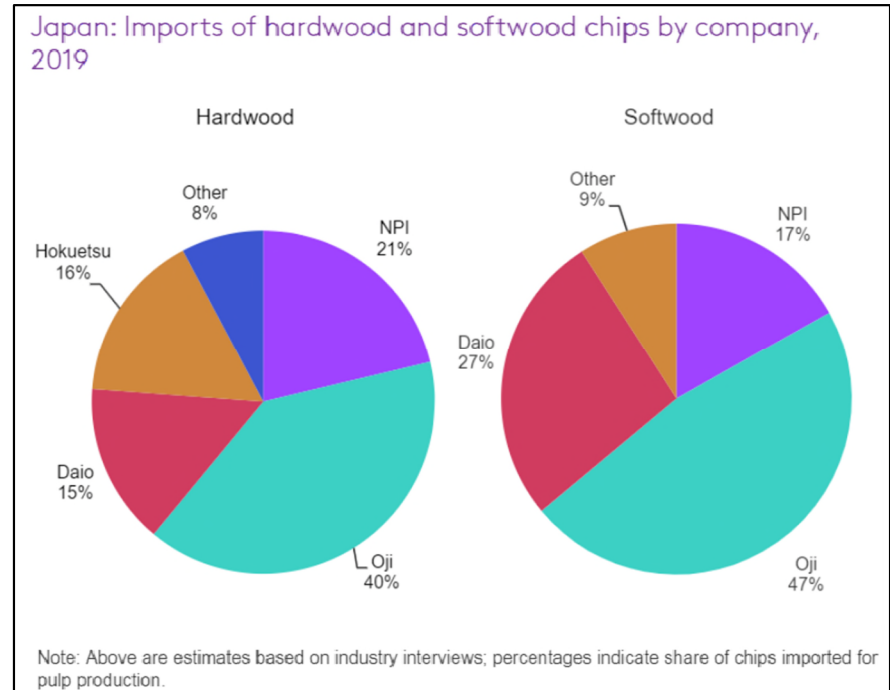
# Japanese Market

## Recovery underway

- Pandemic demand pause in March – October the sole cause of 23% 2020 reduction in woodchip imports.
- Lowest finished product inventories since 2016.
- Paper prices holding at pre pandemic levels, along with printing and writing production.

## Future

- 2021 pulp production levels expected to continue at pre-pandemic levels.
- Manufacturers continue to shift away from printing and writing grades to packaging and hygiene grades.
- Chilean woodfibre exports expected to decline further with diversion to domestic production.



Extract from RISI International Pulpwood Trade Review 2020

## Chinese Market

## China drives global commodity boom

- Despite COVID-19 lockdowns woodfibre imports to China increased 7% in 2020.

## Future

- Recovered paper import ban effective this year. A surge in virgin fibre production capacity is being developed to replace this historical fibre source.
- New production capacity to come on stream during 2021 expected to increase demand a further  $\approx 10\%$ .
- Imports from Australia expected to recover in 2021 due to increasing demand, market proximity and limitations on vessel availability.
- Equipment already being ordered for pulp mill expansions planned for 2022 and 2023.
- Slowing export growth from Vietnam, coupled with increasing future demand from China and improving pulp prices bodes well for Australian exporters.

Fastmarkets  
RISI

SEARCH

Asia Symbol planning 2 million tonnes/yr of cartonboard capacity in Guangxi, China

BEIJING, 8 May 2020 (PPI RISI) - Asia Pacific Resources International Limited (APRIL) is planning a new cartonboard complex in

Last week the local government committed to investing a Tieshangang district of

The new mill will be built million tonnes/yr of virgin chemi-mechanical wood. timeline for the scheme.

At present, the company combined capacity of 53 Shandong province.

Their main output includ

Due to its ample forest re

Shandong Sun Paper Ind

In Qinzhou

UFP Sha

A prelim

UFP ma

It will be

tonnes/

Part of the pulp is consumed by the sole 1.2 million tonnes/yr cartonboard machine at the site.

The surplus is shipped to other APP China paper and board production sites.

The new BCTMP line will not make the Beilun mill entirely self-sufficient for chemi-mechanical pulp but will enhance the quality of its coated ivory products and also reduce its reliance on imported RCP, a company source told Fastmarkets RISI.

The mill will still be left with several decking pulp lines with a total capacity of more than 400,000 tonnes/yr.

Fastmarkets  
RISI

SEARCH

China's Liansheng Paper plans huge BHK, coated ivory board, tissue and UFP mill in Fujian

BEIJING, 24 July 2020 (PPI RISI) - Liansheng Paper is planning a new integrated mill in Fujian province.

The company has secured project. It submitted an environmental impact assessment to local authorities late last month.

According to the EIA, the total investment of RMB 1.2 billion for the newly-established facility.

The first will include a 1.2 million tonnes/yr BCTMP line, a 530,000 tonnes/yr BCTMP line and a 530,000 tonnes/yr BCTMP line.

SEARCH

APP China starts building 300,000 tonnes/yr BCTMP line in Ningbo

BEIJING, 25 July 2019 (Fastmarkets RISI) - APP China has started the construction of a new 300,000 tonnes/yr bleached chemi-thermomechanical pulp (BCTMP) line at its Beilun mill in Ningbo city, Zhejiang province.

The Valmet-supplied line is expected to be commissioned in the second half of next year.

It will be integrated with the two cartonboard machines with a combined capacity of 1.2 million tonnes/yr at the same site, providing furnish for the mid-layer of their output.

The Beilun mill currently has not on-site virgin pulp line and furnishes the coated ivory board mid-layer with high-grade deinked recovered paper (RCP) as well as some BCTMP pulp sourced from its sister plant in Qinzhou city, Guangxi province.

The Qinzhou complex, operated by APP China subsidiary Guangxi Jingui Pulp & Paper, runs three chemi-mechanical pulp lines with a combined capacity of 950,000 tonnes/yr.

Part of the pulp is consumed by the sole 1.2 million tonnes/yr cartonboard machine at the site.

The surplus is shipped to other APP China paper and board production sites.

The new BCTMP line will not make the Beilun mill entirely self-sufficient for chemi-mechanical pulp but will enhance the quality of its coated ivory products and also reduce its reliance on imported RCP, a company source told Fastmarkets RISI.

Fastmarkets  
RISI

SEARCH

China's Shandong Huatai to build 700,000 tonnes/yr BHK line at Dongying mill

BEIJING, 3 April 2020 (PPI RISI) - Huatai Paper is planning a 700,000 tonnes/yr flagship mill in Dongying.

The company published an announcement on the scheme last month. According to the EIA document, the timeline yet, will involve

SEARCH

Sun Paper orders record-breaking 600,000 tonnes/yr BCTMP line for new Guangxi mill in China

BEIJING, 25 July 2019 (Fastmarkets RISI) - China's Shandong Sun Paper Industry has ordered a 600,000 tonnes/yr bleached chemi-thermomechanical pulp (BCTMP) line for its new mill in Guangxi autonomous

region, which won the supply contract, it will have a 10 air dried tonnes per day, or about 600,000 tonnes/yr, world's largest BCTMP line.

cheduled for the fourth quarter of 2021.

at of the BCTMP line will largely be to furnish a 1 ivory board machine at the same site.

reported that Sun Paper is close to closing a contract with its machinery supplier to provide the BM, which will have a 1 ivory board machine at the same site.

also tapped Valmet to supply an 800,000 tonnes/yr bleached hardwood kraft pulp line and a 500,000 tonnes/yr fine paper machine at the Beilun mill next year.

of investments, the company's RMB 20 billion (\$286.8 million) expansion project in Guangxi appears to be ahead of schedule.

an environmental impact assessment report for the project, Sun Paper planned to eventually construct a 3.5 million tonnes/yr BCTMP line at the Beilun complex in two phases over five years.

a 200,000 tonnes/yr chemi-mechanical pulp line would be built in the first phase, followed by a 200,000 tonnes/yr line making the same grade in the second phase.

y board machine was also included in the second half of the scheme.

Fastmarkets  
RISI

SEARCH

Sun Paper orders record-breaking 600,000 tonnes/yr BCTMP line for new Guangxi mill in China

BEIJING, 25 July 2019 (Fastmarkets RISI) - China's Shandong Sun Paper Industry has ordered a 600,000 tonnes/yr bleached chemi-thermomechanical pulp (BCTMP) line for its new mill in Guangxi autonomous

region, which won the supply contract, it will have a 10 air dried tonnes per day, or about 600,000 tonnes/yr, world's largest BCTMP line.

cheduled for the fourth quarter of 2021.

at of the BCTMP line will largely be to furnish a 1 ivory board machine at the same site.

reported that Sun Paper is close to closing a contract with its machinery supplier to provide the BM, which will have a 1 ivory board machine at the same site.

also tapped Valmet to supply an 800,000 tonnes/yr bleached hardwood kraft pulp line and a 500,000 tonnes/yr fine paper machine at the Beilun mill next year.

of investments, the company's RMB 20 billion (\$286.8 million) expansion project in Guangxi appears to be ahead of schedule.

an environmental impact assessment report for the project, Sun Paper planned to eventually construct a 3.5 million tonnes/yr BCTMP line at the Beilun complex in two phases over five years.

a 200,000 tonnes/yr chemi-mechanical pulp line would be built in the first phase, followed by a 200,000 tonnes/yr line making the same grade in the second phase.

y board machine was also included in the second half of the scheme.

BEIJING, 25 July 2019 (Fastmarkets RISI) - China's Shandong Sun Paper Industry has ordered a 600,000 tonnes/yr bleached chemi-thermomechanical pulp (BCTMP) line for its new mill in Guangxi autonomous

region, which won the supply contract, it will have a 10 air dried tonnes per day, or about 600,000 tonnes/yr, world's largest BCTMP line.

cheduled for the fourth quarter of 2021.

at of the BCTMP line will largely be to furnish a 1 ivory board machine at the same site.

reported that Sun Paper is close to closing a contract with its machinery supplier to provide the BM, which will have a 1 ivory board machine at the same





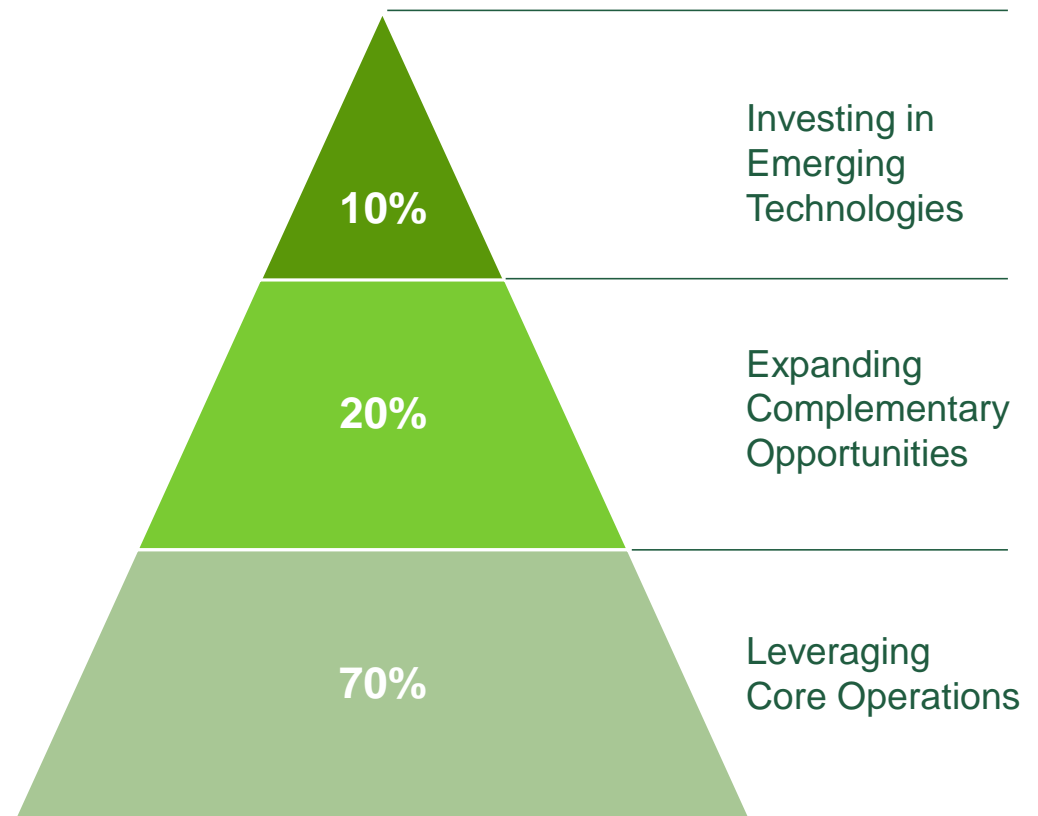
# Business Development

Midway

# Business Development Focus

Midway is focused on generating greater resilience in its earnings profile:

- **Leveraging core operations** - Progress on developing new operating site in Tasmania: operational design for layout at Bell Bay finalised, supplies secured to underpin the first phase of operation and customers engaged and supportive of the new product lines.
- **Expanding complementary opportunities** - Securing required approvals for grain terminal development in Geelong: development approvals secured, design finalised, engineering provider selected and strong interest received from major grain exporters.
- **Investing in emerging technologies** - Building partnerships to participate in significant opportunities in decarbonisation and the circular economy: feasibility studies commenced on opportunities to use forestry products to create value added carbon solutions for industrial applications such as liquid and gas filtration, soil remediation and food grade applications.



# Leveraging core operations

## Progress update – Bell Bay

- Midway has secured agreement with TasPorts on the operational configuration for the first stage of development to process at Bell Bay.
- Development approvals are in progress with the EPA and local council.
- Midway has commissioned the required engineering work from a local Georgetown engineering firm.
- Significant interest has been received from buyers for the initial product to be produced at Midway's operation at Bell Bay.
- Capacity exists to expand operations subject to market development efforts that Midway will undertake over the next two years.



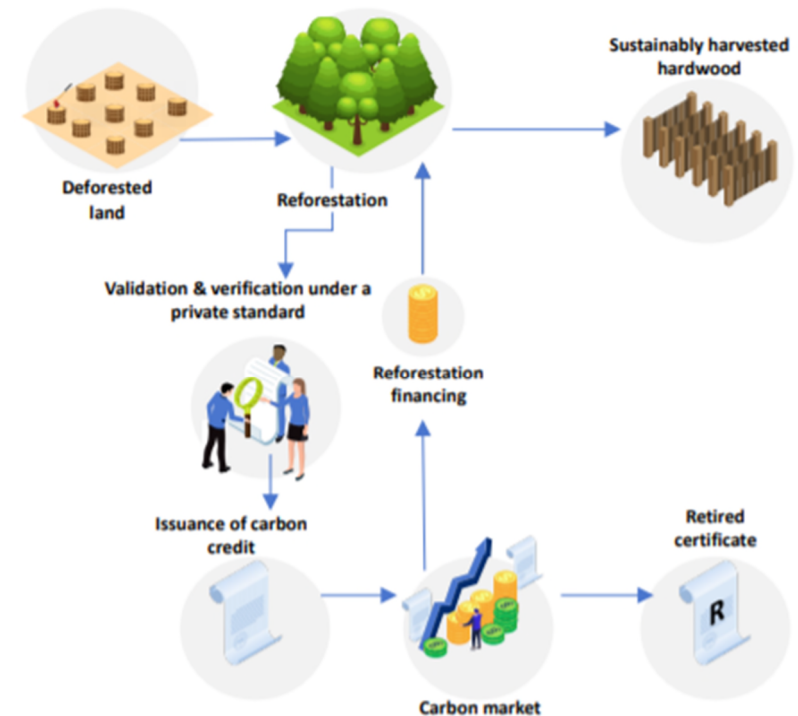




## Investing in emerging technologies

**Global momentum is rapidly building across the investment community, government and business to invest in key decarbonisation technologies:**

- Forests are a proven and critical carbon sequestration solution.
- A concerted effort to develop a robust global voluntary carbon market has commenced, led by credible private sector interests (*Taskforce on scaling voluntary carbon markets* – January 2021).
- Midway is conducting feasibility studies to commercialise proven technologies in several manufacturing sectors that utilise high purity organic carbon for industrial filtration purposes, and technologies that sequester organic carbon, sourced from local hardwood plantations.
- Significant local opportunities exist to supply heat and energy from biomass, produce carbon for industrial use, and participate in the sequestration of carbon into soils via the utilisation of plantation residues.
- Global market demand for carbon offsets is expected to improve the economics of these opportunities for Midway.



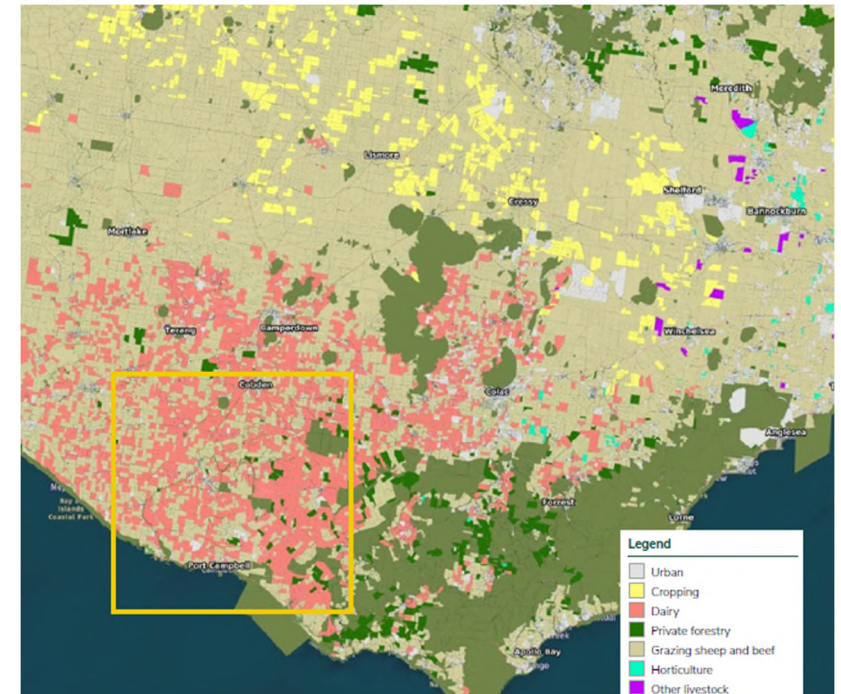
The growth in voluntary global carbon offset markets will create significant new opportunities for Midway

Graphic source: *Taskforce on Scaling Voluntary Carbon Markets* Report January 2021

Midway

## Future Woodfibre Supply

- Midway is working to secure new capital and recycle existing assets to develop new plantations in key catchments to build the future woodfibre supply pipeline for Midway.
- During the period, Midway signed a contract to sell 785ha of land in the Upper Goulburn region for \$3.2M, a price significantly higher than book value.
- Midway is well progressed in developing a new plantation investment model that incorporates part of the existing Midway estate.
- Aligning with strengthening global investor appetite for sustainable forestry, Midway is aiming to secure funding for new plantations in prime production regions across Southern Australia.



## Potential Timber Volumes Growing with Changing Mix (Domestic and Export)

Volumes (000's GMT)	FY20	FY21	FY22	FY23	Comments
Geelong	683	862	800	700	Excludes grain and softwood
Portland	851	372	800	800	Revised volumes (New ABP agreement)
Brisbane	231	279	350	400	Hardwood and softwood mix
Melville Island	122	60	150	220	Biomass expected
Tasmania <sup>1</sup>	498	737	700	800	Includes third party and Midway wood
Western Australia	245	223	460	600	Logistics volumes
<b>TOTAL</b>	<b>2,630</b>	<b>2,533</b>	<b>3,260</b>	<b>3,520</b>	

(1) Represents both Group owned and third party woodfibre where Midway performs the marketing function.

## Key Points



### Global market recovery

- Higher pulp prices driven by strong Chinese demand and lower stocks
- Growing evidence of capacity expansion in China and tightening of supply
- COVID-19 is driving structural change in global pulp and paper markets but underlying net benefit for woodfibre exporters
- Japanese consumption expected to recover to pre COVID-19 levels

### Business development

- Short term focus on leveraging our existing operations to drive earnings growth
- Developing opportunities to expand into complementary business opportunities and investing in emerging technologies ie. Decarbonisation initiatives

### Positive long term international fundamentals

- Favourable export demand outlook for woodfibre forecast by RISI



The background of the slide is a photograph of a logging operation in a forest. A large hydraulic excavator with a grapple attachment is visible, positioned in the upper left. To its right, a large bundle of cut logs is being held or moved. The forest floor is covered with logs and debris. The entire image is overlaid with a semi-transparent dark green filter.

# Attachments

Midway

## Reconciliation of underlying net profit after tax to statutory net profit after tax (NPAT)

	1H21	1H20
<b>Net profit/(loss) after tax (underlying) <sup>1</sup></b>	<b>513</b>	<b>(1,208)</b>
Net fair value increment on biological assets	(2,008)	9,020
Non-cash interest expense (AASB 15 strategy impact)	(845)	(528)
Job Keeper	1,222	-
Impairment loss on Non-current Assets (PMP)	-	(4,858)
Impairment loss on Non-current Assets (Addco)	-	(1,446)
Impact of ASSB 16	(8)	(13)
Transaction costs incurred	(186)	-
<b>Net profit/(loss) after tax - statutory</b>	<b>(1,312)</b>	<b>967</b>

(1) Underlying NPAT refers to statutory net profit after tax adjusted to remove impact of one off or non-recurring items and the net fair value gain/(loss) on biological assets



## Reconciliation of underlying Earnings, before interest, tax, depreciation and amortization to statutory Earnings, before interest, tax, depreciation and amortization (EBITDA)

	1H21	1H20
<b>EBITDA – S (underlying) <sup>1</sup></b>	<b>7,092</b>	<b>4,214</b>
Net fair value increment on biological assets	(2,868)	12,885
Job Keeper	1,745	-
Impairment loss on Non-current Assets (PMP)	-	(6,516)
Impairment loss on Non-current Assets (Addco)	-	(2,066)
Impact of AASB 16	954	878
Transaction costs incurred	(264)	-
<b>EBITDA – statutory</b>	<b>6,659</b>	<b>9,395</b>

(1) Underlying EBITDA refers to statutory Earnings before interest, tax, depreciation and amortization adjusted to remove impact of one off or non-recurring items and the net fair value gain/(loss) on biological assets

A background image showing a logging operation. A large crane is lifting a bundle of logs. The scene is set in a forest with many trees. The image is overlaid with a dark green semi-transparent layer.

# Questions?

Midway