

Dart Mining NL

*Unearthing the Mineral Riches of the **Lachlan Fold Belt** in **Northeast Victoria***

“Drill testing Copper/Gold Porphyries, Orogenic Gold, & Lithium Pegmatites”

Noosa Mining Investor Conference

James Chirnside - Managing Director

10th November 2021



ASX:DTM

FORWARD LOOKING STATEMENTS CAUTION

- Certain statements contained in this document constitute forward looking statements. Such forward-looking statements are based on a number of estimates and assumptions made by the Company and its consultants in light of experience, current conditions and expectations of future developments which the Company believes are appropriate in the current circumstances.
- These estimates and assumptions while considered reasonable by the Company are subject to known and unknown risks, uncertainties and other factors which may cause the actual results, achievements and performance of the Company to be materially different from the future results and achievements expressed or implied by such forward-looking statements.
- Investors are cautioned that forward looking information is no guarantee of future performance and accordingly, investors are cautioned not to place undue reliance on these forward-looking statements.

COMPANY SNAPSHOT

~124.4M

Shares on Issue

~32.8M

Options on Issue

~3.4M

Performance Rights

~A\$13.0M

Market Cap

KEY PERSONNEL

Mr. James Chirnside – Chairman & Managing Director

Mr. Carl Swensson – Non-executive & Independent Director

Mr. Luke Robinson – Non-executive & Independent Director

Dr. Ben Hines – Head of Exploration

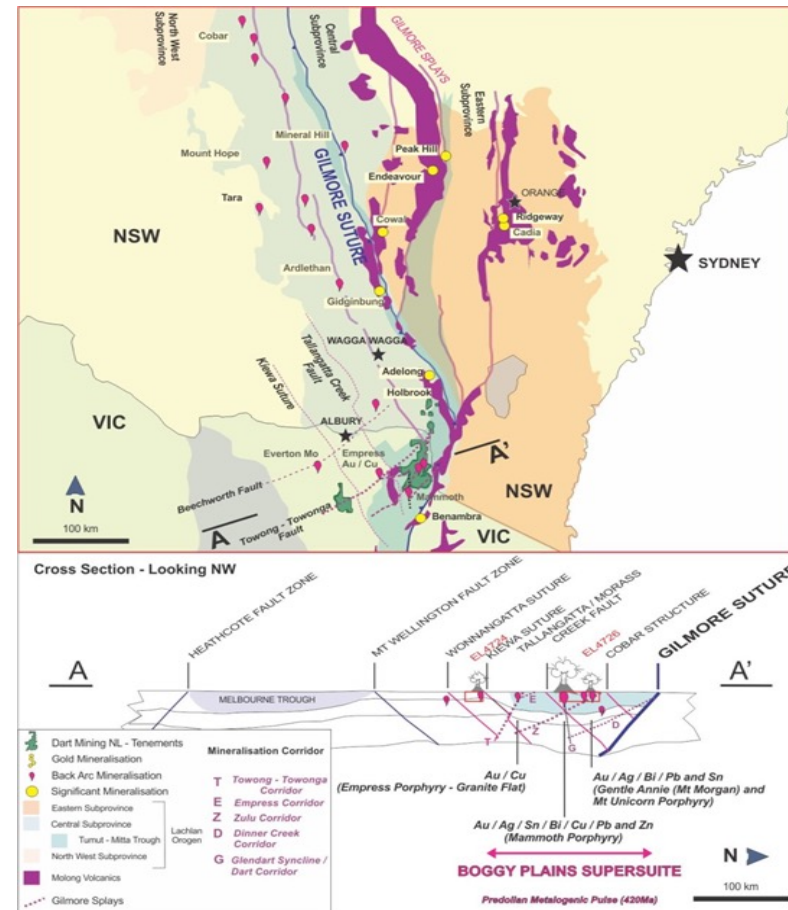
Ms. Julie Edwards – Company Secretary



ASX:DTM

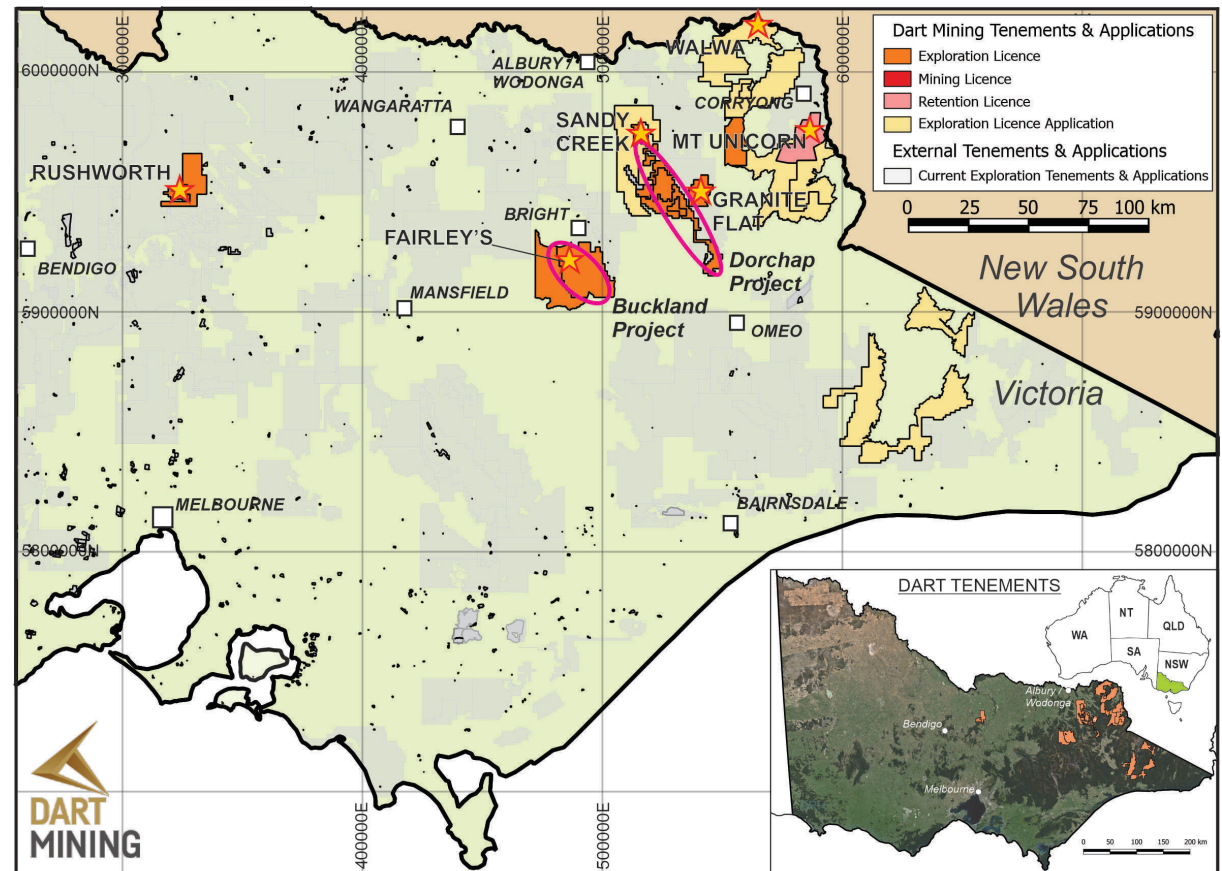
REGIONAL GEOLOGICAL SETTING

- The **Lachlan Fold Belt** and associated rocks of the **Macquarie Arc** (purple shade) host a significant proportion of mineralisation in Eastern Australia and are home to some of Australia's largest operating mines
- Dart Mining has a considerable footprint in the central and southern **Lachlan Fold Belt**, a region that has been, and remains under-explored



LICENCES, FOOTPRINT & PROJECTS

- Large tenement package 6,000km²
- Focus on Northeast, East & Central Northern Victoria
- Experts on NE Victorian Geology
- Identification of a new porphyry province in 2008 with Mt Unicorn Mo, Cu porphyry discovery
- Multiple projects, diverse commodity exposures, at various stages of pipeline development
- Substantial scale and opportunity



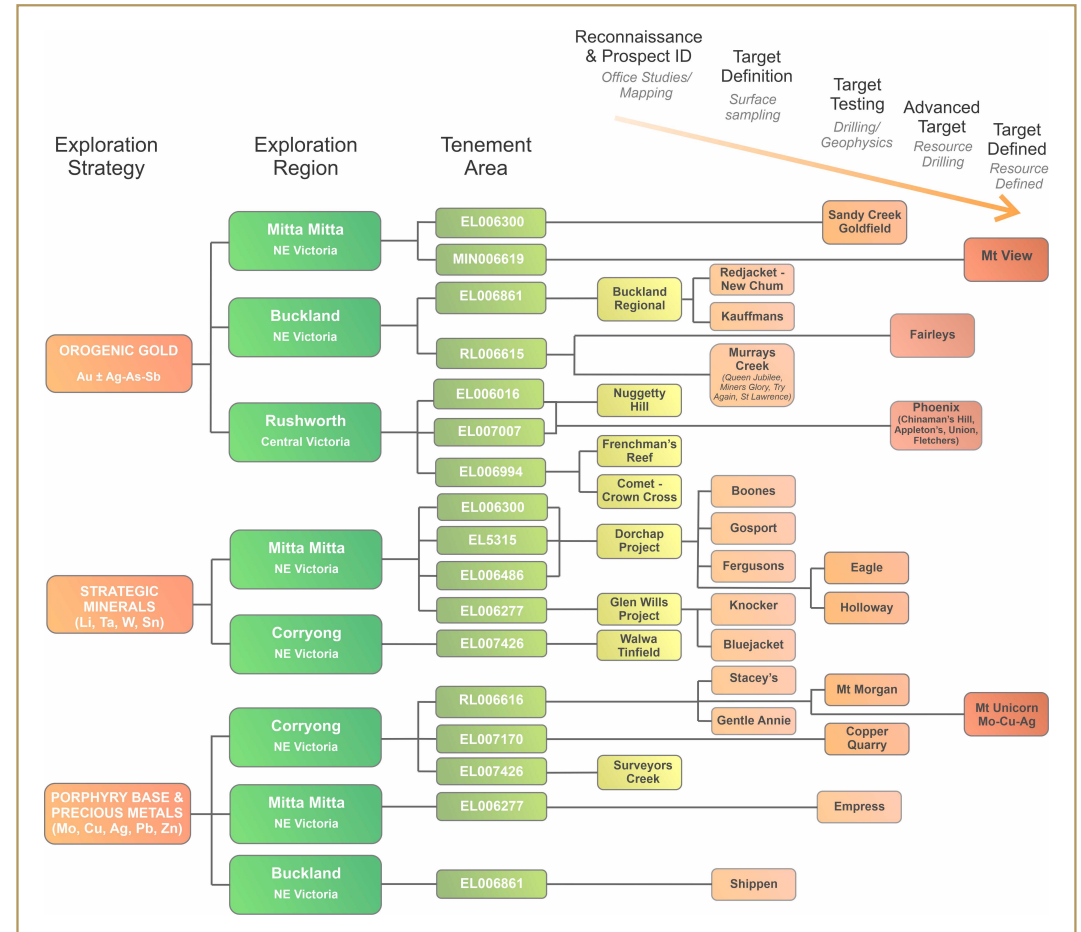
PROJECTS PIPELINE

■ Three-pronged exploration approach:

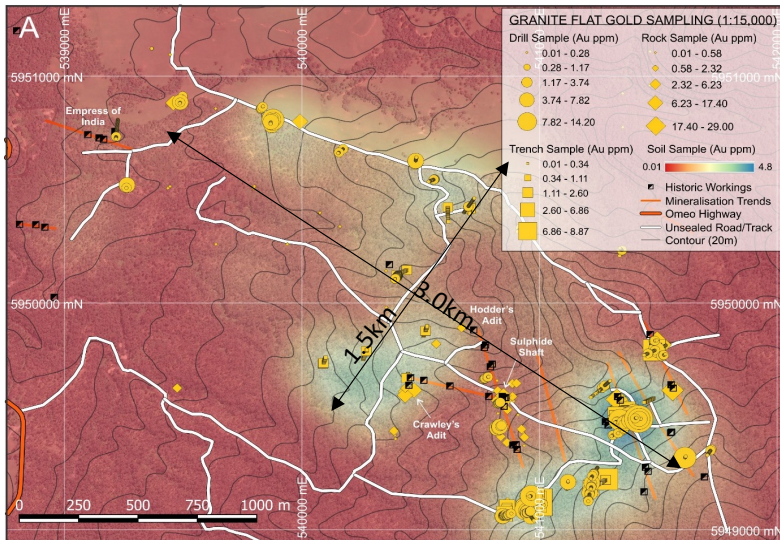
- Orogenic Gold
- Strategic & Technology metals (Li, Ta, W, Sn)
- Porphyry base metals (Mo, Cu, Pb, Zn)

■ Several projects at “target testing” stage:

- Granite Flat Cu-Au porphyry project
- Dorchap Lithium project
- Buckland Orogenic Gold project



GRANITE FLAT Cu-Au PROJECT



Location

- Situated adjacent to the Omeo Highway, between townships of Mitta Mitta & Glen Wills

Scale

- 3 × 2 km soil Cu-Au footprint, open in all directions – additional soil expansion program underway
- Significant remanent magnetism anomalies identified north of project footprint
- IP chargeability and resistivity anomalies identified across 1.5 × 2.0km footprint
- Significant intervals of Cu-Au mineralisation intersected up to 180m below surface



Style

- Two mineralisation styles identified:
 - Intrusion-related Cu-Au – long intervals of low-grade Cu-Au
 - Hydrothermal overprint – silica-sulphide veins of high-grade Au-Cu-Ag ± Pb, Zn

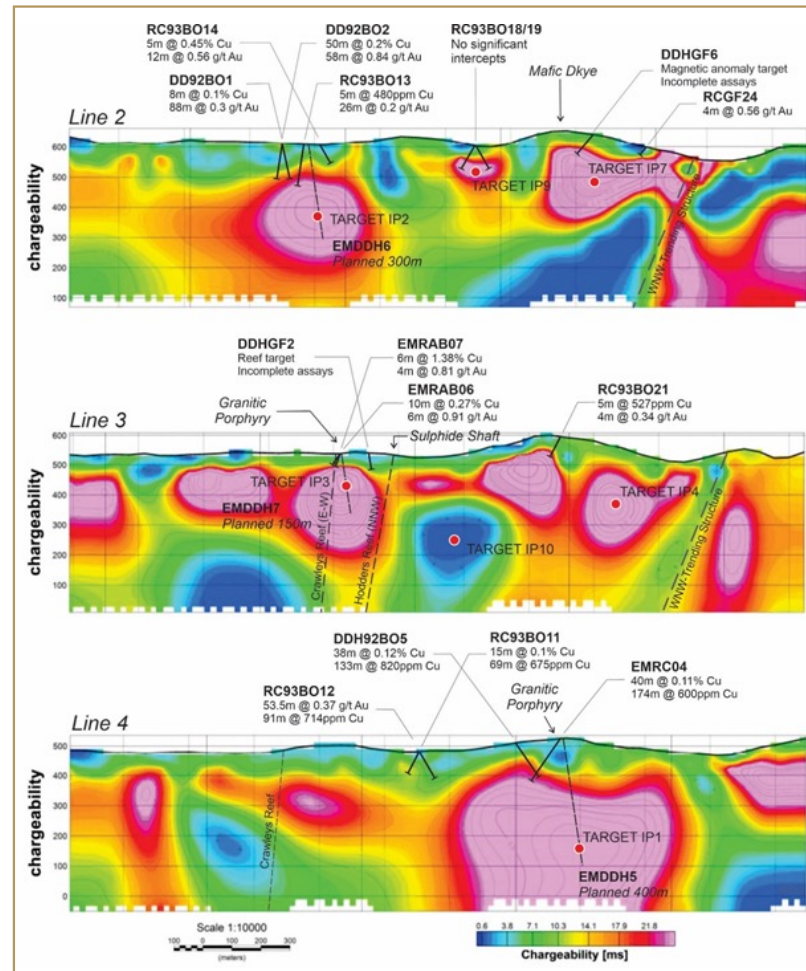
GRANITE FLAT Cu-Au PROJECT (cont.)

Over 109 drillholes:

- Dominantly shallow drilling
- Deepest hole 180m to date

Dart completed:

- 1350m RAB drilling (42 holes)
- 951m RC drilling (6 holes)
- Diamond drilling currently underway (5 holes)
- 16km IP & MT geophysics (6 lines)



- Recent geophysical survey shows large anomalies at 200-400m below surface
- None of the geophysical anomalies identified have ever been drilled

DORCHAP LITHIUM PROJECT

Location

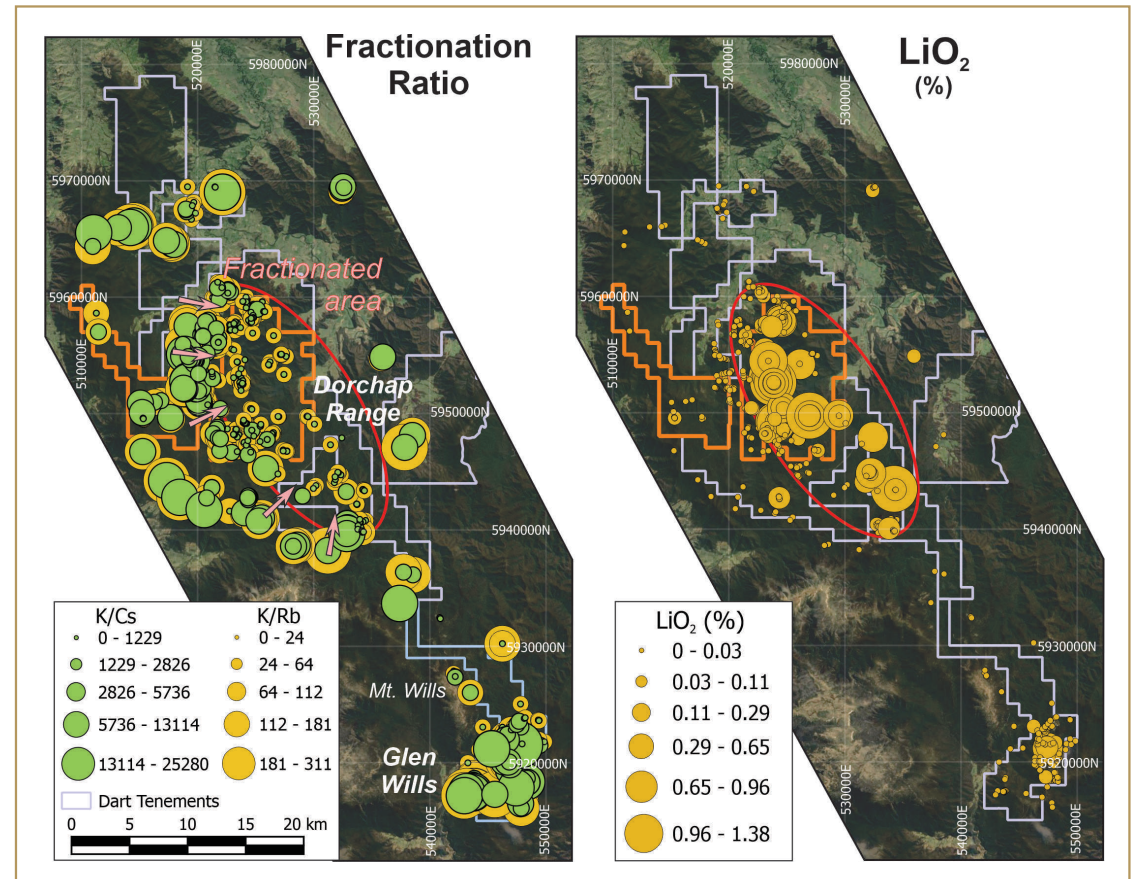
- Situated in the Dorchap Range, between Eskdale & Glen Wills
- Historic tin mining district

Style

- Pegmatite hosted Lithium-Caesium-Tantalum (LCT) mineralisation
- Spodumene & Petalite mineralisation, with localised lepidolite & amblygonite
- Exposure is often poor or obscured by heavy vegetation

Scale

- 20x12km zone of highly-fractionated pegmatites identified from surface sampling
- >1,000 pegmatite dykes across the dyke swarm
- Multiple Li mineralised pegmatite dykes identified, with Li hosted primarily by spodumene & petalite



BUCKLAND GOLD PROJECT

Location

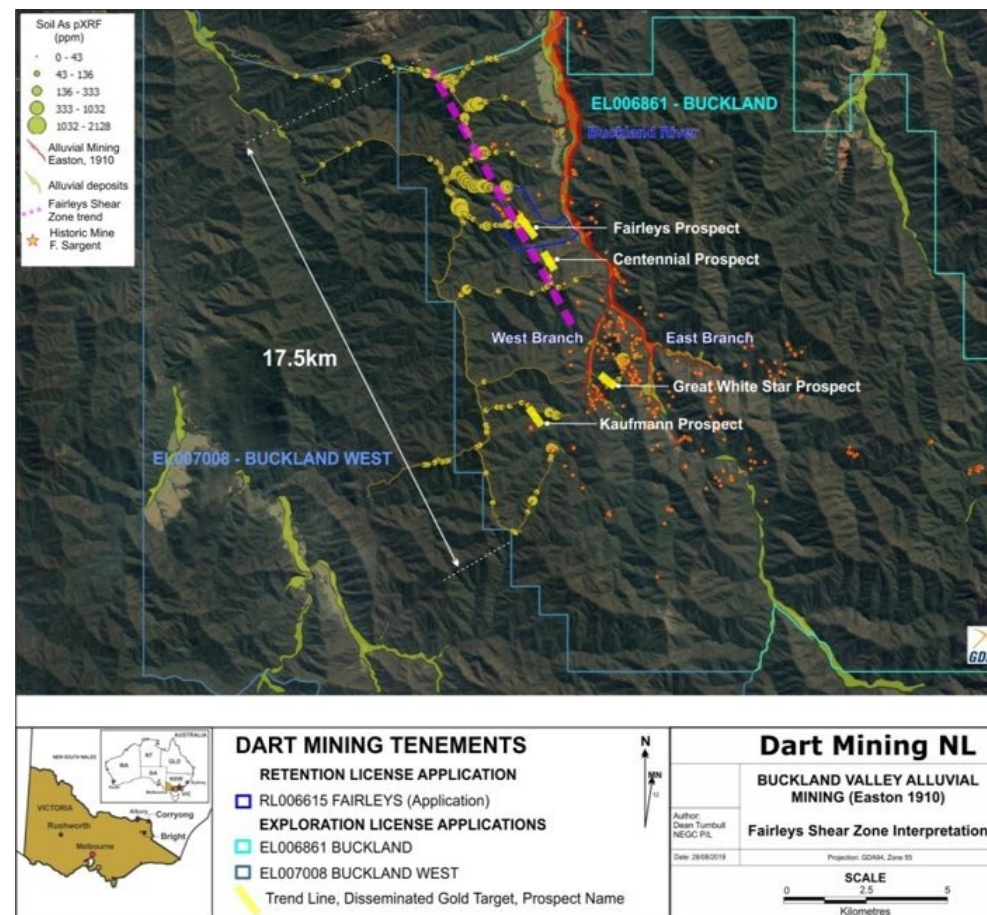
- Part of 6.9Moz* Rutherglen-Beechworth-Harrietville gold district
- Primary + Alluvial production
- Buckland shows extensive shallow primary workings (>100) but low primary production (it's all still in the ground!)

Scale

- 17.5km strike identified from ~7,500 surface samples
- Multiple parallel structures identified
- Thick mineralisation intersected >180m below surface
- Mineralisation extends to over 10m width at surface and down hole

Style

- Shear hosted, orogenic gold system
- Strong association of gold with arsenic
- Strong similarities with Bendigo and Fosterville style gold mineralisation
- Multiple mineralization styles evident
 - Surface outcropping with vein-hosting high grade gold
 - Broad zones of disseminated sulphide hosted low and mid-grade gold in altered wall rock



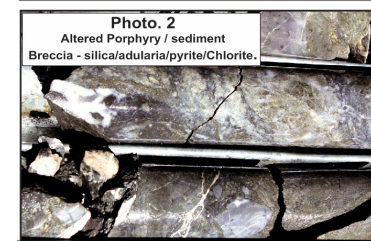
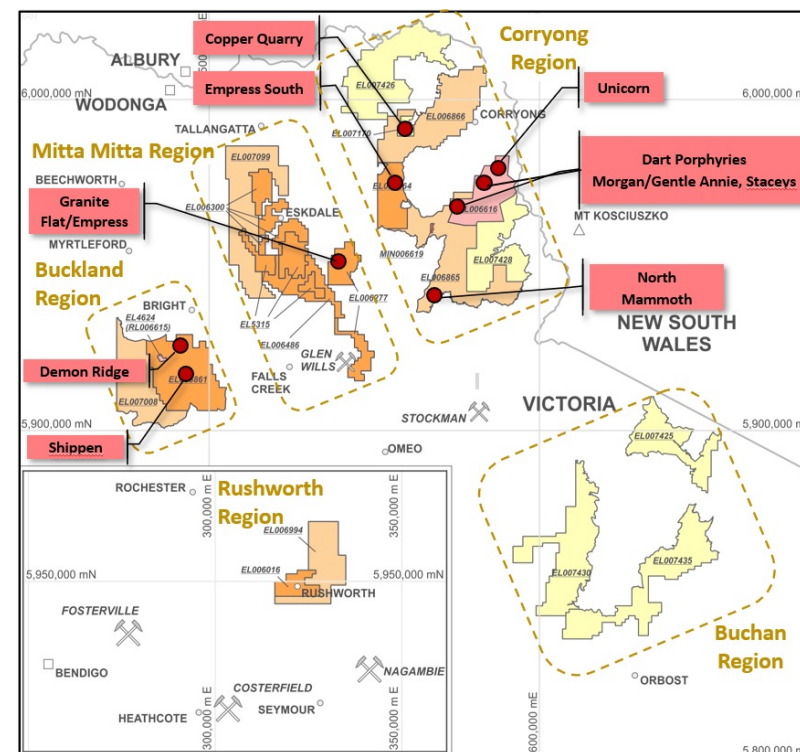
* Historic production figures from: PHILLIPS G.N., 2010. Victorian Gold Province, Australia: A Contemporary Exploration Guide. GeoScience Victoria Special Publication

ASX:DTM

A NEW PORPHYRY PROVINCE IN NE VICTORIA

MULTIPLE PORPHYRY TARGETS:

- **STACEY'S (Au, Cu)**
 - Strong Au-As-Cu Geochem, mapped QF dykes
- **GENTLE ANNIE (Cu, Au, Mo)**
 - Interpreted concealed porphyry, classic geochemical and geophysical porphyry signature
- **GRANITE FLAT (Au, Cu)**
 - Large Au footprint in historic workings – Cu, Au noted in porphyritic rocks
- **MORGAN (Mo, Ag, Sn, Au)**
 - known mineralised Mo-Ag(+Au) QFP. Large classic porphyry geochemical signature
- **COPPER QUARRY (Cu)**
 - Outcropping altered and mineralised QFP, strong Cu soil geochemistry, bimodal system
- **EMPRESS SOUTH (Cu)**
 - magnetic signature with strong Cu soil geochemistry
- **UNICORN (Mo, Cu, Ag, Zn)**
 - 200Mt Mo-Ag-Cu resource in outcropping QFP. Climax-style mineralisation. Additional targets at depth and adjacent
- **SHIPPEN GULLY PORPHYRY**
 - Multiphase intrusion, silica flooded with stockwork showing Mo



SCHEDULED WORKS 2021-2022

H2 2021

- **Granite Flat Gold-Copper Porphyry**
 - Expansion of soil sampling program
 - Low impact diamond drilling program
- **Glen Wills Lithium Pegmatites**
 - Low impact RC drilling program
 - Additional mapping and sampling
 - LiDAR acquisition
- **Eskdale Lithium Pegmatites**
 - Additional mapping and sampling

H1 2022

- **Granite Flat Gold-Copper Porphyry**
 - Completion of soil sampling program
 - Low impact RC drilling program
 - 2500m RC drilling
 - Continuation diamond drilling (1200m)
- **Buckland Orogenic Gold**
 - Soil sampling across South Buckland
 - Low impact diamond drilling
 - RC drilling program
 - Geophysics survey
- **Eskdale Lithium Pegmatites**
 - Low impact RC drilling program
 - Additional mapping & sampling
- **Corryong Porphyries**
 - Geophysics program (Stacey's)

H2 2022

- **Buckland Orogenic Gold**
 - Ongoing RC & Diamond drilling
- **Eskdale Lithium Pegmatites**
 - Resource drilling program
- **Corryong Porphyries**
 - RC/Diamond drilling program
 - Geophysics survey
- **Rushworth Orogenic Gold**
 - Regional mapping program
- **Mountain View Orogenic Gold**
 - RC drilling program
 - Mining Proposal
- **Walwa Tin Mine**
 - Mapping & sampling
 - Low impact drilling

SUMMARY RATIONALE

- Exceptional and commanding tenement position in a highly mineralised, under-explored region
- Very cheap vs. peers with far less diversity and prospectivity
- Well funded with very supportive long-term shareholders
- Geolocation of portfolio is very attractive
- Tenements are 99% on Government land in state forest away from communities
- 15 of 32 minerals identified by Geoscience Australia as “critical” - are represented within Dart’s exploration footprint
- Covid related shutdowns causing severe constraints on metals production and production development meaning elevated prices will remain for medium and in some cases long term

We are a low cost explorer that is operationally self sufficient, with a systematic and focussed exploration approach

Dart operates across a large tract of one of Australia’s most highly mineralised and under-explored regions

DISCLAIMER

- The information contained in this presentation is for informational purposes only and does not constitute an offer to issue, or arrange to issue, securities or other financial products. The information contained in this presentation is not investment or financial product advice and is not intended to be used as the basis for making investment decisions. The presentation has been prepared without taking into account the investment objectives, financial situation or particular needs of any particular person. Before making an investment decision, you should consider, with or without the assistance of a financial advisor, whether an investment is appropriate in light of your particular investment needs, objectives and financial circumstances.
- No representation or warranty, express or implied, is made as to the fairness, accuracy, completeness or correctness of the information, opinions and conclusions contained in this presentation. To the maximum extent permitted by law, none of Dart Mining NL, their directors, employees or agents, nor any other person accepts any liability, including, without limitation, any liability arising out of fault of negligence, for any loss arising from the use of the information contained in this presentation. In particular, no representation or warranty, express or implied is given as to the accuracy, completeness or correctness, likelihood of achievement or reasonableness or any forecasts, prospects or returns contained in this presentation nor is any obligation assumed to update such information. Such forecasts, prospects or returns are by their nature subject to significant uncertainties and contingencies.