

Dart Mining NL

Unearthing the Mineral Riches of Northeast and Eastern Victoria

Annual General Meeting
Virtual

Tuesday 30th November 2021 11:00

James Chirnside - Managing Director
Carl Swensson – Non-executive Director
Luke Robinson – Non-executive Director



ASX:DTM

Forward Looking Statements Caution

Certain statements contained in this document constitute forward looking statements. Such forward-looking statements are based on a number of estimates and assumptions made by the Company and its consultants in light of experience, current conditions and expectations of future developments which the Company believes are appropriate in the current circumstances. These estimates and assumptions while considered reasonable by the Company are subject to known and unknown risks, uncertainties and other factors which may cause the actual results, achievements and performance of the Company to be materially different from the future results and achievements expressed or implied by such forward-looking statements.

Investors are cautioned that forward looking information is no guarantee of future performance and accordingly, investors are cautioned not to place undue reliance on these forward-looking statements.



ASX:DTM

CORPORATE PROFILE



Corporate Metrics

- ASX Code - DTM
- Shares on Issue ~ 124.4m
- Options on Issue ~ 32.8m
- Performance Rights ~3.4m
- Market Capitalisation @ \$0.10 = ~A\$12.4m

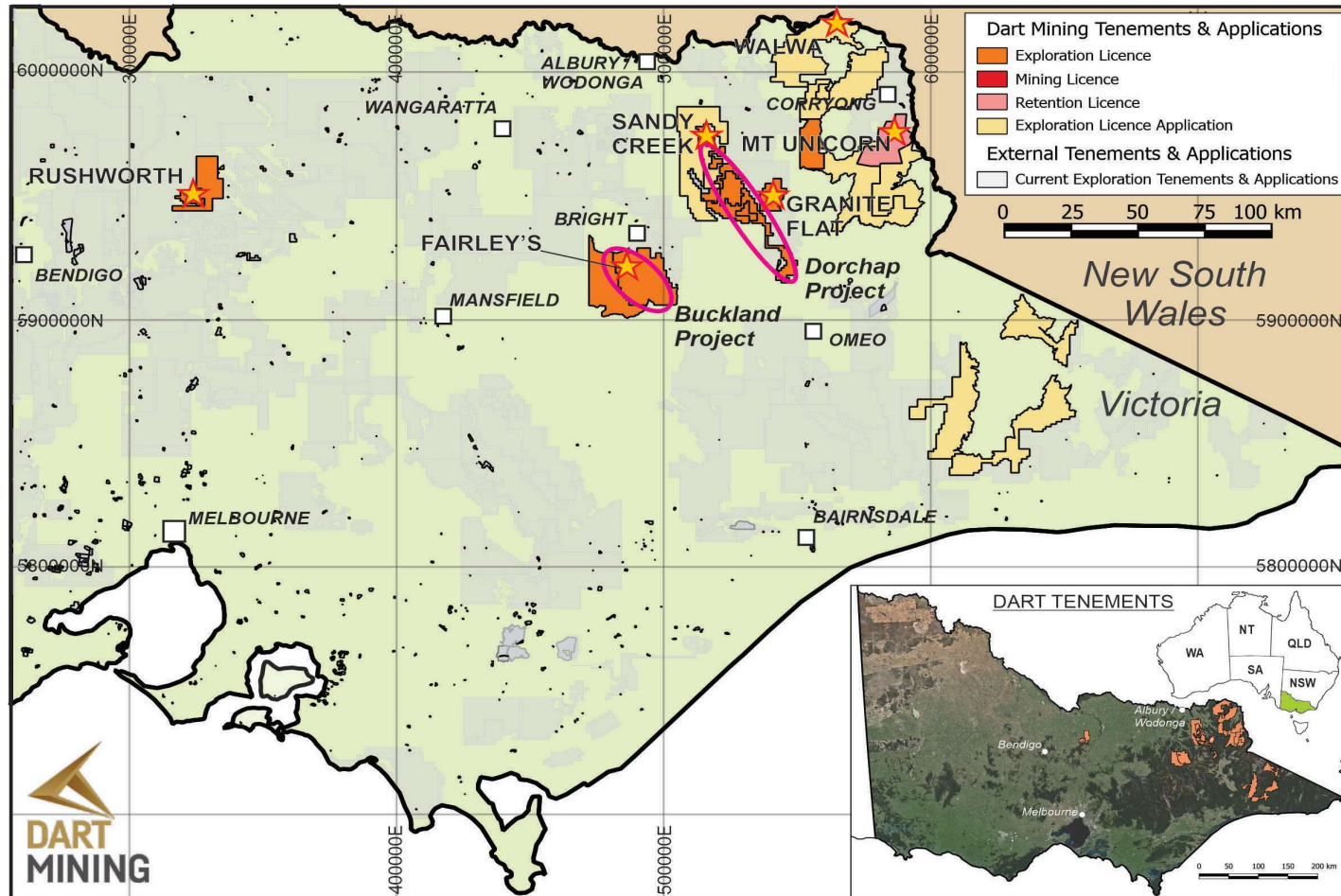
Key Personnel

- Mr. James Chirnside – Chairman & Managing Director
- Mr. Carl Swensson – Non-executive Independent Director
- Mr. Luke Robinson – Non-executive Independent Director
- Dr. Ben Hines – Head of Exploration
- Mr. Julie Edwards – Company Secretary

ASX:DTM

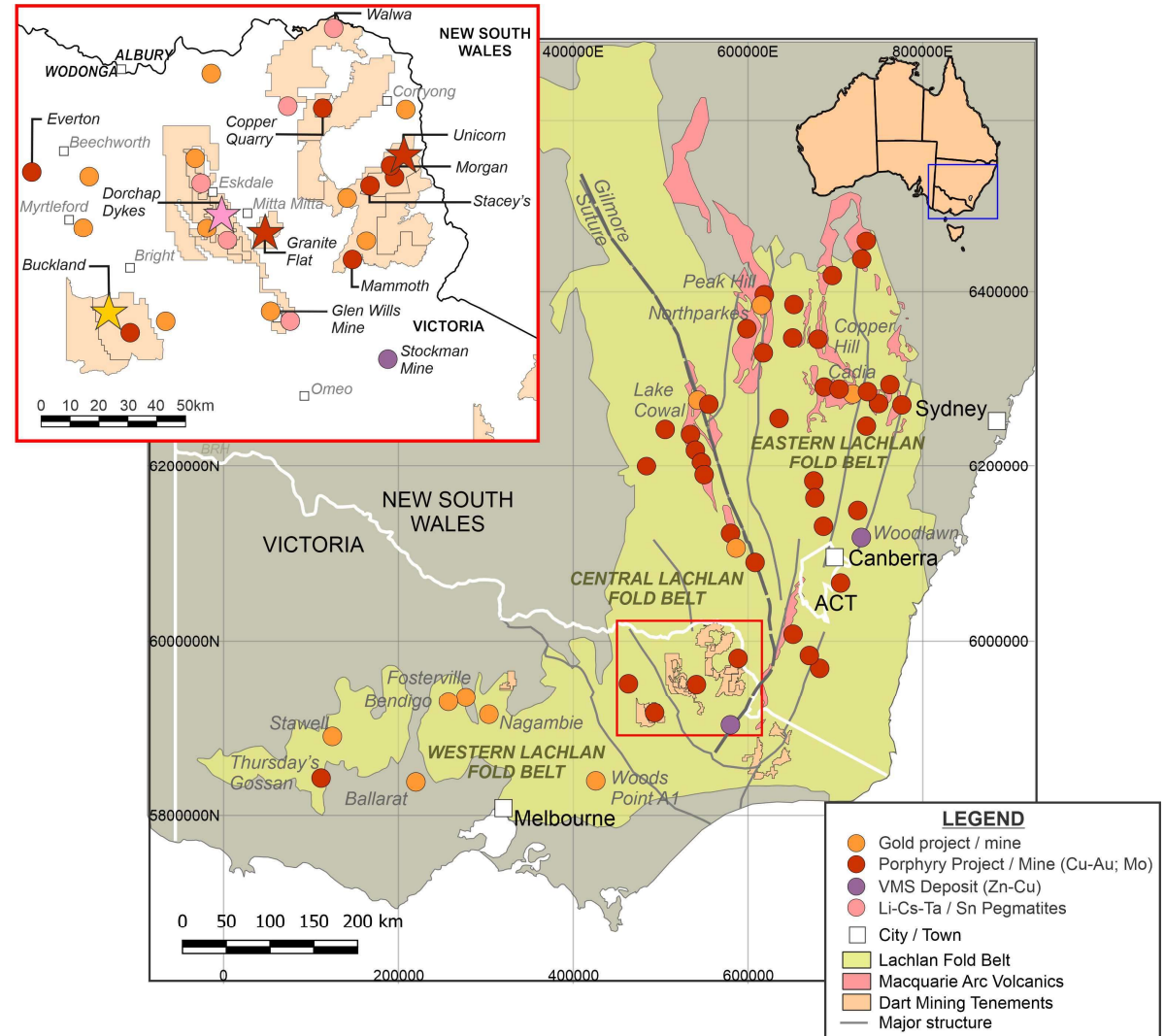
EXPLORATION LICENCES, FOOTPRINT & PROJECTS

- Focus on NE and Eastern Victoria
- Significant team experience in NE Victorian Geology
- Large tenement package 6,000km²
- Diverse exposure in precious and critical metals
- 9 Historic Goldfields
- >~1,000 LCT Pegmatites
- 8 Au-Cu, Mo-Cu Porphyry Projects



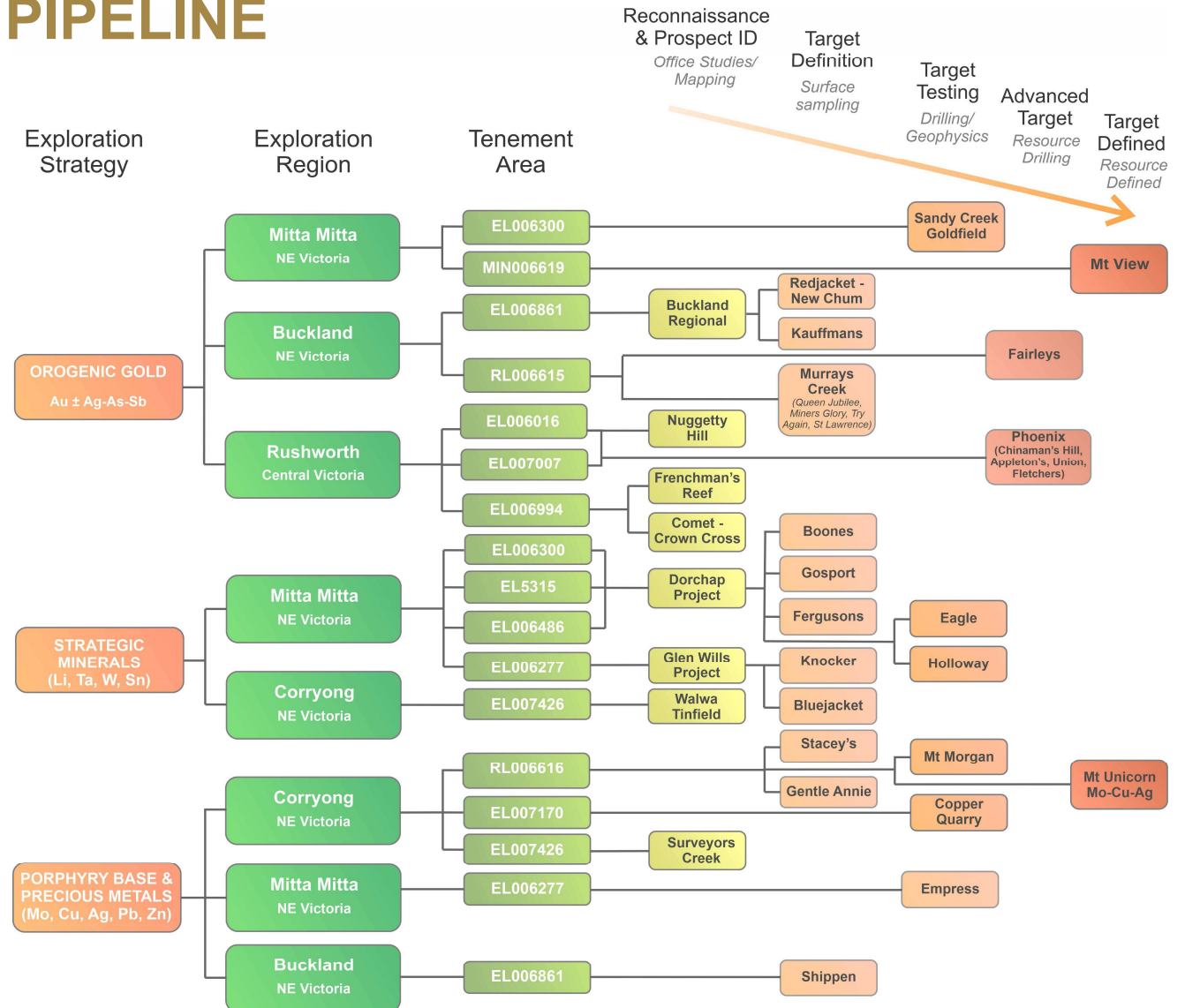
REGIONAL GEOLOGICAL SETTING

- The Lachlan Fold Belt and associated Macquarie Arc rocks host a significant proportion of mineralisation in Eastern Australia
- Geology is the fundamental precursor for any minerals exploration
- The geological setting of Northeast Victoria is diverse, dynamic, and under-explored
- Dart Mining has a strong foothold in the central Lachlan Fold Belt, with several mineral systems identified



EXPLORATION PROJECT PIPELINE

- Three-pronged exploration approach
 - Orogenic Gold
 - Strategic/Critical & Technology metals (Li, Ta, W, Sn)
 - Porphyry Cu-Au, Cu-Mo
- Projects at various stages of pipeline development



DORCHAP LITHIUM PROJECT

• Location

- Situated in the Dorchap Range, between Eskdale & Glen Wills
- Historic tin mining district

• Style

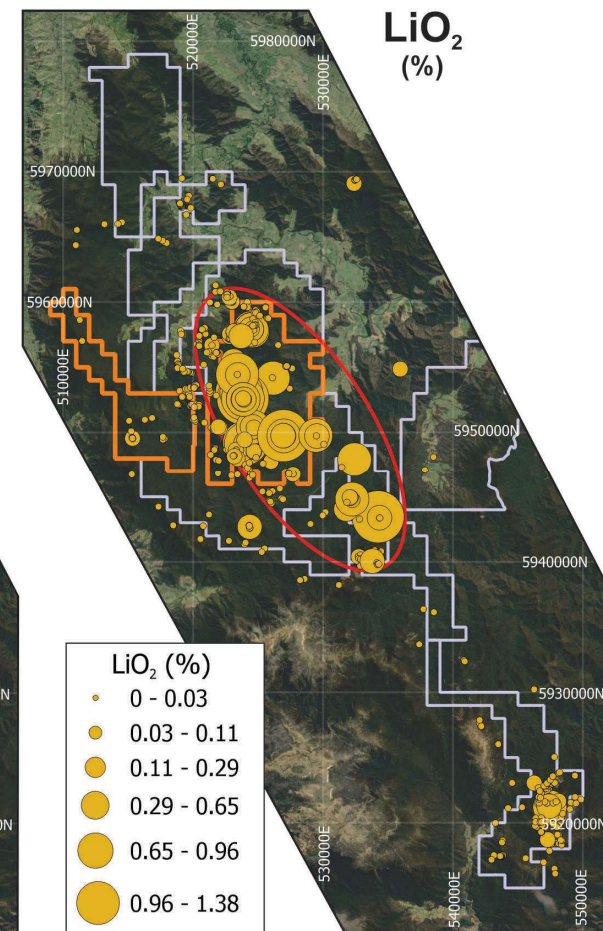
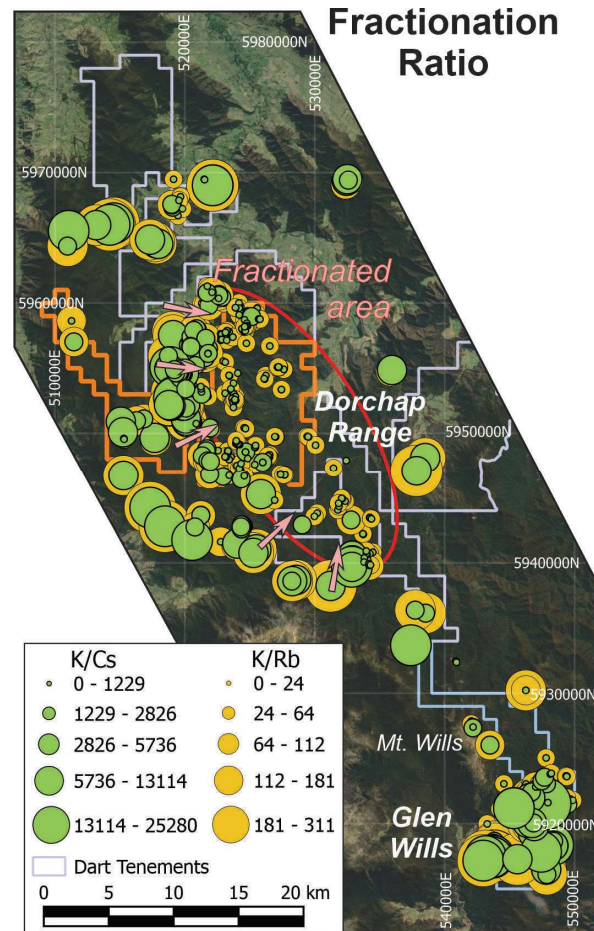
- Pegmatite hosted Lithium-Caesium-Tantalum (LCT) mineralisation
- Spodumene & Petalite mineralisation, with localised lepidolite & amblygonite
- Exposure is often poor or obscured by heavy vegetation

• Scale

- 20x12km zone of highly-fractionated pegmatites identified from surface sampling
- >1,000 LCT pegmatite dykes across the dyke swarm
- Multiple Li mineralised pegmatite dykes identified, with Li hosted primarily by spodumene

• Results Highlights

- 10m @ 1.38% Li₂O (rockchip sampling)
- 10m @ 1.22% Li₂O (rockchip sampling)
- 10m @ 0.95% Li₂O & 20m @ 0.33% Li₂O (Eagle Dyke, Channel sampling)
- 16m @ 0.32% Li₂O, (Bluejacket Dyke, Channel sampling)
- 20m @ 0.332% Li₂O from 2m, *including* 2m @ 1.158% Li₂O (Roadside drilling)



ASX:DTM

GRANITE FLAT Cu-Au PROJECT

- **Location**

- Situated adjacent to the Omeo Highway, between Mitta Mitta & Glen Wills

- **Scale**

- 3 × 2 km soil Cu-Au footprint, open in all directions – additional soil expansion program underway
- Significant remanent magnetism anomalies identified north of project footprint
- IP chargeability and resistivity anomalies identified across 1.5 × 2.0km footprint
- Significant intervals of Cu-Au mineralisation intersected up to 180m below surface

- **Style**

- Two mineralisation styles identified:
- Intrusion-related Cu-Au – long intervals of low-grade Cu-Au
- Hydrothermal overprint – Narrow silica-sulphide veins of high-grade Au-Cu-Ag ± Pb, Zn

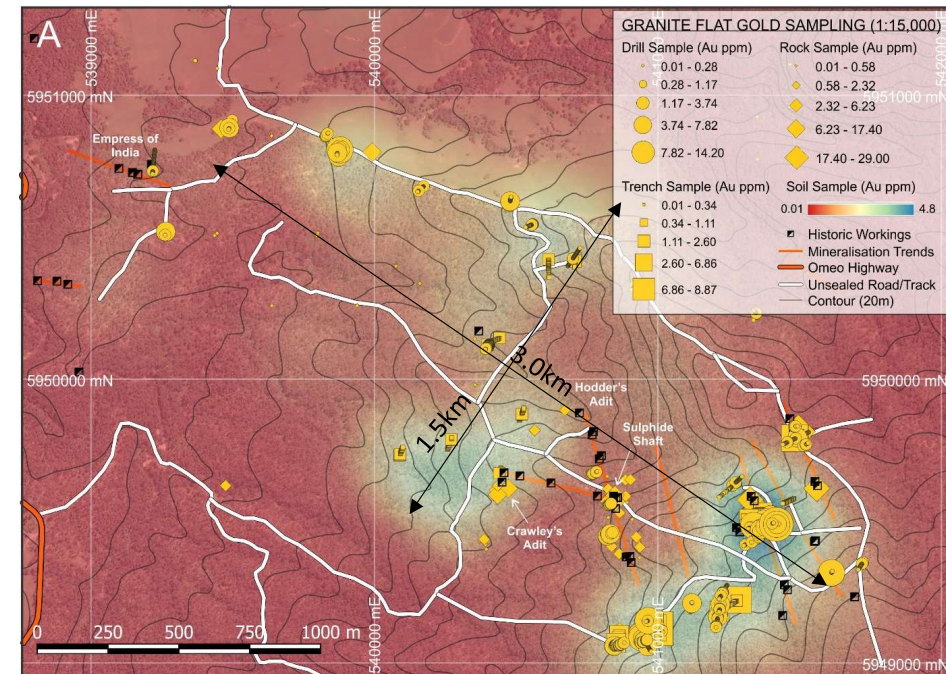
- **Results Highlights**

Gold

- 19m @ 9.39 g/t Au, including 3m @41.1 g/t from 28m
- 4m @3.23 g/t Au, including 1m @ 7.84 g/t from 15m

Copper

- 19m @.61% Cu, including 3m @1.52%
- 28m @.35% Cu, including 9m @.73% from 7m
- 40m @ 0.11% Cu including 19m @ 0.18% Cu from 35m
- 138m @ 0.09% Cu from surface (entire hole)
- 111m @ 0.07% Cu from surface



ASX:DTM

GRANITE FLAT Cu-Au PROJECT

Over 109 historic and contemporary drillholes

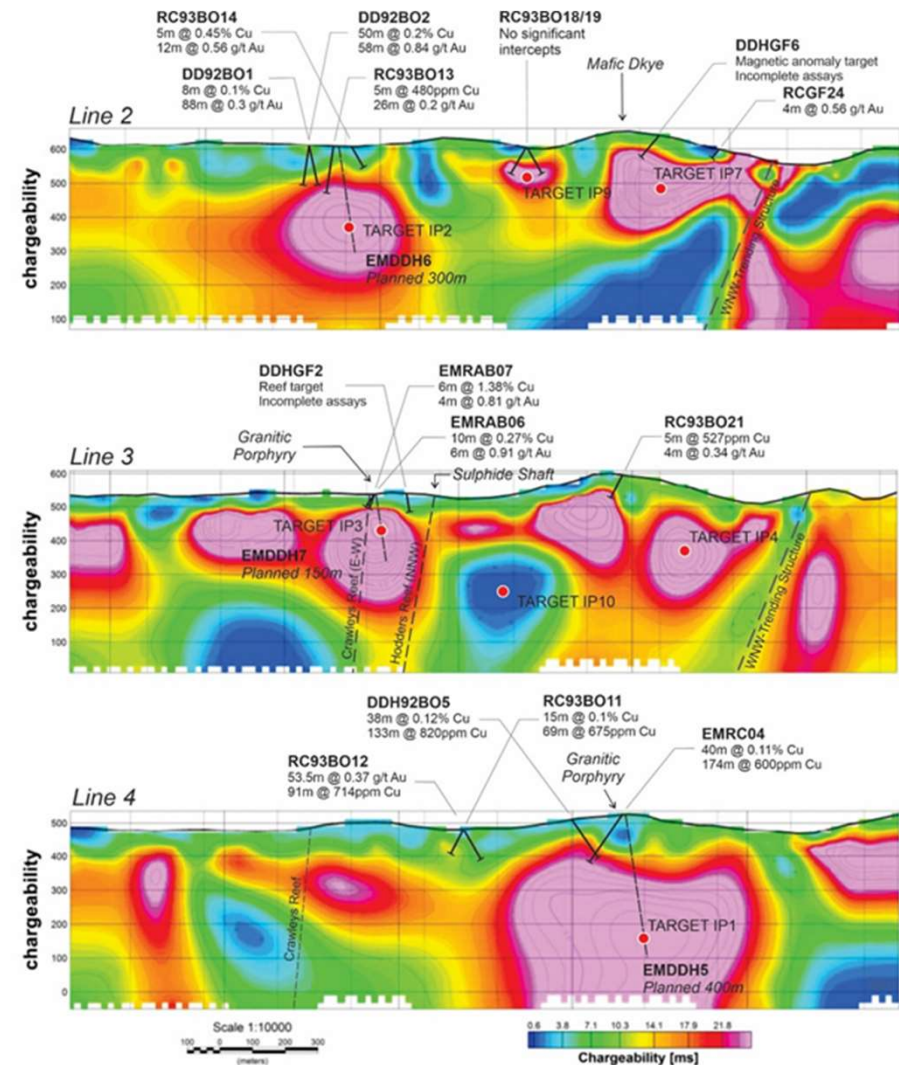
- Dominantly shallow drilling
- Deepest hole 180m to date

Dart completed:

- 1350m RAB drilling in 2020 (42 holes)
- 951m RC drilling in 2021
- Diamond drilling currently underway (>300m completed; further 1500m planned)
- 16km IP & MT geophysics (6 lines)

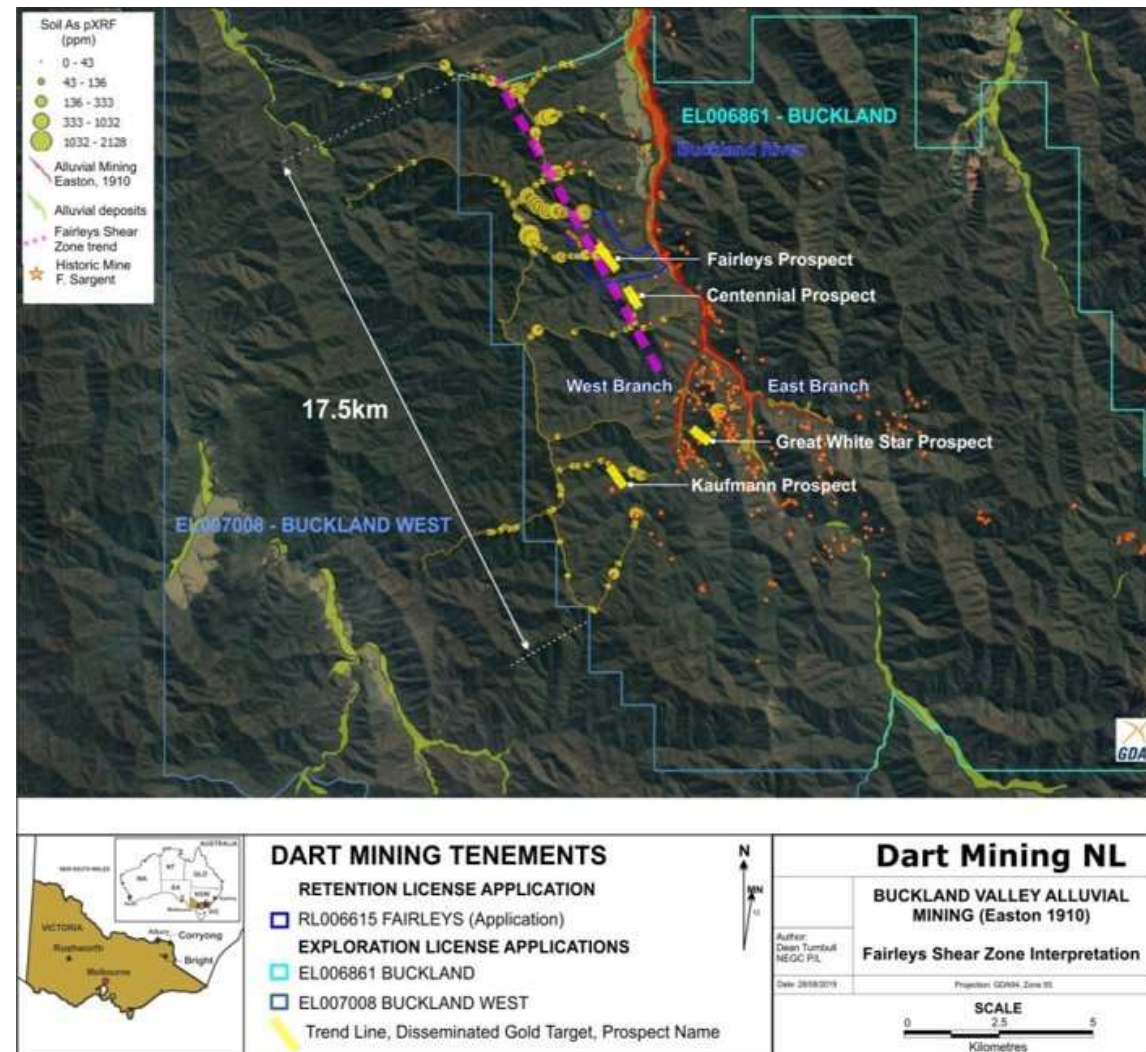
Recent geophysical survey shows large anomalies at 200-400m below surface

- None of the geophysical anomalies identified have ever been drilled



BUCKLAND GOLD PROJECT

- **Location**
 - Part of 6.9Moz¹ Rutherglen-Beechworth-Harrietville gold district
 - Primary + Alluvial production
 - Buckland shows extensive shallow primary workings (>100) but low primary production
- **Scale**
 - 17.5km strike identified from ~7,500 surface samples
 - Multiple parallel structures identified
 - Thick mineralisation intersected >180m below surface
 - Mineralisation extends to over 10m width at surface and down hole
- **Style**
 - Shear hosted, orogenic gold system
 - Strong association of gold with arsenic
 - Strong similarities with Bendigo and Fosterville style gold mineralisation
 - Multiple mineralization styles evident
 - Surface outcropping with vein-hosting high grade gold
 - Broad zones of disseminated sulphide hosted low and mid-grade gold in altered wall rock
- **Results Highlights**
 - 13m @ 4.82 g/t Au from 12m incl 2m @ 11.6 g/t Au from 20m
 - 11m @ 2.64 g/t Au from 28m incl 3m @ 7.49 g/t Au from 29m
 - 10m @ 2.27 g/t Au from 4m incl 2m @ 5.52 g/t Au from 7m
 - 2m @ 4.70 g/t Au from 17m and 3m @ 2.62 g/t Au from 26m

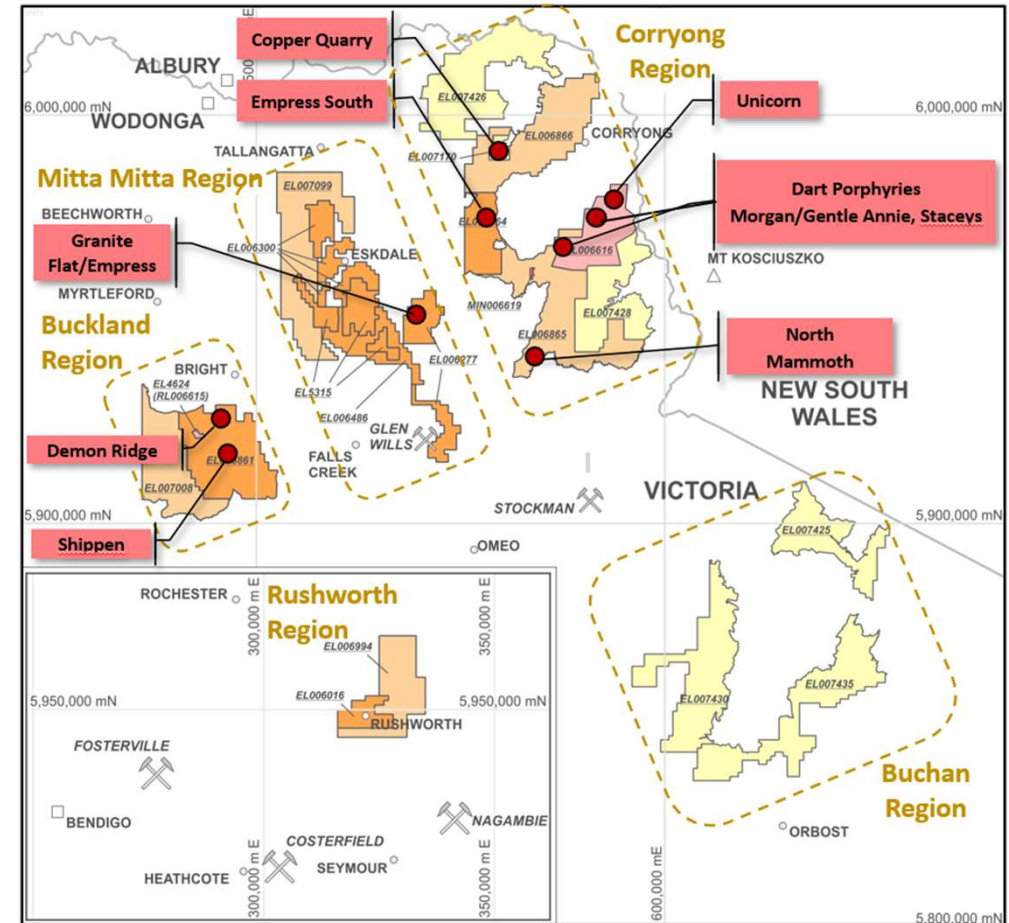


1. Historic production figures from: PHILLIPS G.N., 2010. Victorian Gold Province, Australia: A Contemporary Exploration Guide. GeoScience Victoria Special Publication

PORPHYRY PROVINCE - NE VICTORIA

Multiple Porphyry Targets:

- **STACEY'S (Au, Cu)**
 - Strong Au-As-Cu Geochem, mapped QF dykes
- **GENTLE ANNIE (Cu, Au, Mo)**
 - Interpreted concealed porphyry, classic geochemical and geophysical porphyry signature
- **GRANITE FLAT (Au, Cu)**
 - Large Au footprint in historic workings – Cu, Au noted in porphyritic rocks
- **MORGAN (Mo, Ag, Sn, Au)**
 - Known mineralised Mo-Ag(+Au) QFP. Large classic porphyry geochemical signature
- **COPPER QUARRY (Cu)**
 - Outcropping altered and mineralised QFP, strong Cu soil geochemistry, bimodal system
- **EMPRESS SOUTH (Cu)**
 - Magnetic signature with strong Cu soil geochemistry
- **UNICORN (Mo, Cu, Ag, Zn)**
 - 200Mt Mo-Ag-Cu resource in outcropping QFP. Climax-style mineralisation. Additional targets at depth and adjacent
- **SHIPPEN GULLY PORPHYRY**
 - Multiphase intrusion, silica flooded with stockwork showing Mo



SCHEDULED WORKS 2021-2022

2nd Half 2021

- **Granite Flat Gold-Copper Porphyry**
 - Expansion of soil sampling program
 - Low impact diamond drilling program
- **Glen Wills Lithium Pegmatites**
 - Low impact RC drilling program
 - Additional mapping & sampling
 - LiDAR acquisition
- **Eskdale Lithium Pegmatites**
 - Additional mapping & sampling

1st Half 2022

- **Granite Flat Gold-Copper Porphyry**
 - Completion of soil sampling program
 - Low impact RC drilling program
 - 2500m RC drilling
 - Continuation diamond drilling (1200m)
- **Buckland Orogenic Gold**
 - Soil sampling across South Buckland
 - Low impact diamond drilling
 - RC drilling program
 - Geophysics survey
- **Eskdale Lithium Pegmatites**
 - Low impact RC drilling program
 - Additional mapping & sampling
- **Corryong Porphyries**
 - Geophysics program (Stacey's)

2nd Half 2022

- **Buckland Orogenic Gold**
 - Ongoing RC & Diamond drilling
- **Eskdale Lithium Pegmatites**
 - Resource drilling program
- **Corryong Porphyries**
 - RC/Diamond drilling program
 - Geophysics survey
- **Rushworth Orogenic Gold**
 - Regional mapping program
- **Mountain View Orogenic Gold**
 - RC drilling program
 - Mining Proposal
- **Walwa Tin Mine**
 - Mapping & sampling
 - Low impact drilling



SUMMARY

- Dart has accumulated an exceptional and commanding tenement position in a highly prospective under-explored region
- Renewable energy transition is underpinning demand for entire metals complex and many of these are represented within Dart's portfolio
- Positive long-term price fundamentals including covid-19 related shutdowns causing severe constraints on metals production and production development = perfect storm
- Geolocation of projects increasingly important for supply reliance
- DTM is cheap vs. peers who have far less prospectivity
- Well funded with very supportive long term shareholders

DTM is a low cost explorer that is self-sufficient with a systematic and focussed exploration approach



ASX:DTM

DISCLAIMER

The information contained in this presentation is for informational purposes only and does not constitute an offer to issue, or arrange to issue, securities or other financial products. The information contained in this presentation is not investment or financial product advice and is not intended to be used as the basis for making investment decisions. The presentation has been prepared without taking into account the investment objectives, financial situation or particular needs of any particular person. Before making an investment decision, you should consider, with or without the assistance of a financial advisor, whether an investment is appropriate in light of your particular investment needs, objectives and financial circumstances.

No representation or warranty, express or implied, is made as to the fairness, accuracy, completeness or correctness of the information, opinions and conclusions contained in this presentation. To the maximum extent permitted by law, none of Dart Mining NL, their directors, employees or agents, nor any other person accepts any liability, including, without limitation, any liability arising out of fault of negligence, for any loss arising from the use of the information contained in this presentation. In particular, no representation or warranty, express or implied is given as to the accuracy, completeness or correctness, likelihood of achievement or reasonableness or any forecasts, prospects or returns contained in this presentation nor is any obligation assumed to update such information. Such forecasts, prospects or returns are by their nature subject to significant uncertainties and contingencies.



ASX:DTM