



medibio

# INVESTOR DECK

ASX: MEB  
OTCPINK: MDBIF

DECEMBER 2021

# FORWARD LOOKING STATEMENTS

**The purpose of the presentation is to provide an update of the business of Medibio Limited (ASX:MEB) (OTCPINK: MDBIF). These slides have been prepared as a presentation aid only and the information they contain may require further explanation and/or clarification.**

Accordingly, these slides and the information they contain should be read in conjunction with past and future announcements made by Medibio Limited and should not be relied upon as an independent source of information. Please contact Medibio Limited and/or refer to the Company's website for further information. The views expressed in this presentation contain information derived from publicly available sources that have not been independently verified.

None of Medibio Limited, or any of its affiliates or associated companies (or any of their officers, employees, contractors or agents (the Relevant Persons)) makes any representation or warranty as to the accuracy, completeness or reliability of the information, or the likelihood of fulfilment of any forward looking statement or any outcomes expressed or implied in any forward looking statements.

Any forward looking statements in this presentation have been prepared on the basis of a number of assumptions which may prove incorrect and the current intentions, plans, expectations and beliefs about future events are subject to risks,

uncertainties and other factors, many of which are outside Medibio Limited's control. Important factors that could cause actual results to differ materially from assumptions or expectations expressed or implied in this presentation include known and unknown risks.

Because actual results could differ materially to assumptions made and Medibio Limited's current intentions, plans, expectations and beliefs about the future, you are urged to view all forward looking statements contained in this presentation with caution. Except as required by applicable law or the ASX listing rules, the Relevant Persons disclaim any obligation or undertaking to publicly update any statements in this presentation, whether as a result of new information or future events.

***This presentation should not be relied on as a recommendation or forecast by Medibio Limited. Nothing in this presentation constitutes investment advice or should be construed as either an offer to sell or a solicitation of an offer to buy or sell shares in any jurisdiction.***



## **Looking at Mental Health Objectively**

A mental health technology company pioneering the use of Artificial Intelligence, deep learning algorithms and neural network methodology to identify biological markers and patterns to aid in early detection and screening of mental health conditions.



### THE PROBLEM

Current diagnostic tests rely on **clinical interviews with subjective interpretation**

Identification of biomarkers and patterns based on the patient's own biological data to **objectively aid in the early detection and screening of mental health conditions**

### OUR SOLUTION



## WHY INVEST IN MEDIBIO?



### Early Revenue Potential

Medibio's **LUCA** and **ilumen** gaining market traction: early revenue.



### Innovative Technology

The potential to be the world's first objective diagnostic aid of a largely intangible health epidemic: depression



### Targeting a Large Market

Depression is estimated to cost US economy US\$210 billion a year with the cost in Australia estimated at \$12.6 billion annually



### Superior Value Proposition

Objective, data-driven biological markers and patterns identified **during sleep period rather than** subjective assessment.



### Regulatory Program

Validation trial underway for FDA De Novo Application



### Patent Protected Technology

Method and System for Monitoring Stress Conditions Using Overnight Heart Rate

Method and System for Assessing Mental Health State Using Overnight Heart Rate

## BUSINESS UNITS

Significant revenue potential in each market

### IN-MARKET

Non-Regulated



### VALIDATION



#### **MEB001** 2022

Primary care physicians and other specialists referring patients to sleep clinics for sleep disturbance and depression screening



#### **MEB002** 2022

Depression Screening in Home Sleep Environment



#### **MEB003** 2022

Depression Monitoring of Pharmaceutical Effects

## DEPRESSIVE BURDEN TRIAL (SADB) IN FINAL VALIDATION STAGE

The objective of this study is to validate the agreement of **Major Depressive Episode** between the **MEB-001** and **PHQ-9**.

PHQ-9 the industry standard questionnaire used in primary care for screening a Major Depressive Episode.



*Medibio's vision is that anyone referred for a sleep study due to suspected primary or secondary sleep disorder will be screened for Major Depressive Episode using MEB-001*



**MedBridge is the leading provider of sleep laboratory management services in the United States, operating 140 sleep disorder diagnostic centres.**

MedBridge is a valued partner for trial patient recruitment, and importantly, will be a source of market intelligence as we progress through the trial.

*"As the leading sleep management service provider in the US, we are excited about the potential of Medibio's technology and its clinical applications. The objective identification of depression in patients that suffer certain sleep disorders is an unmet need and we are pleased to be working with Medibio to fast-track patient recruitment for the SADB trial."*

Chief Development Officer of MedBridge





## REVENUE MODEL



### Depressive Burden Software MEB-001

Licensing and royalty revenue



### Corporate Health

Enterprise license based  
on a corporation's  
total workforce



### Consumer App

Free download +  
paid subscription model

## NON-REGULATED PATH (CONSUMER HEALTH)



**Data-driven** stress monitoring with **psychologist-developed tools** to help users understand and track stress to prevent more serious conditions.



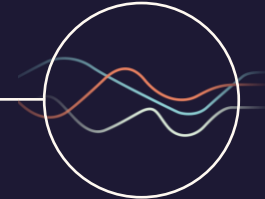
### PERCEIVED STRESS ASSESSMENT

A short series of questions to determine a user's level of perceived stress to be taken bi-monthly



### ODYSSEY

Psychologist-developed tools and exercises to confront negative thinking patterns and identify stressors



### BIOMETRICS

Tracking three components of physiological stress: Cardiac (HR), Activity, and Sleep along with an Overall Stress score



## NON-REGULATED PATH (CORPORATE HEALTH)

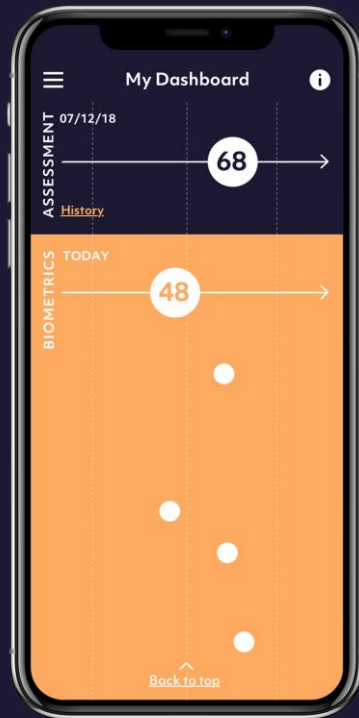


An **early intervention** software program providing objective data to manage and improve **workforce mental health**



### We **CLOSE THE LOOP**

for employers so they can measure and manage the mental well-being of their most important assets



### **FOR EMPLOYEES**

Biometric tracking and well-being assessments on mobile or desktop



### **FOR EMPLOYERS**

De-identified dashboard of department data to get a dynamic view of their workforce

## LOOKING FORWARD - 2022 DEVELOPMENT PROGRAM

2021 Development

June - July 2022  
*Complete Validation*

### MEBsleap

Sleep staging  
algorithms  
+ HRV algorithms



Depression  
Analysis  
Algorithms

### MEB-001

Depression Screening  
in the Sleep Clinic  
Environment

April – May 2022  
Commence Validation\*

### MEB-002

Depression Screening in  
the Home Environment

June - July 2022  
Commence Validation\*

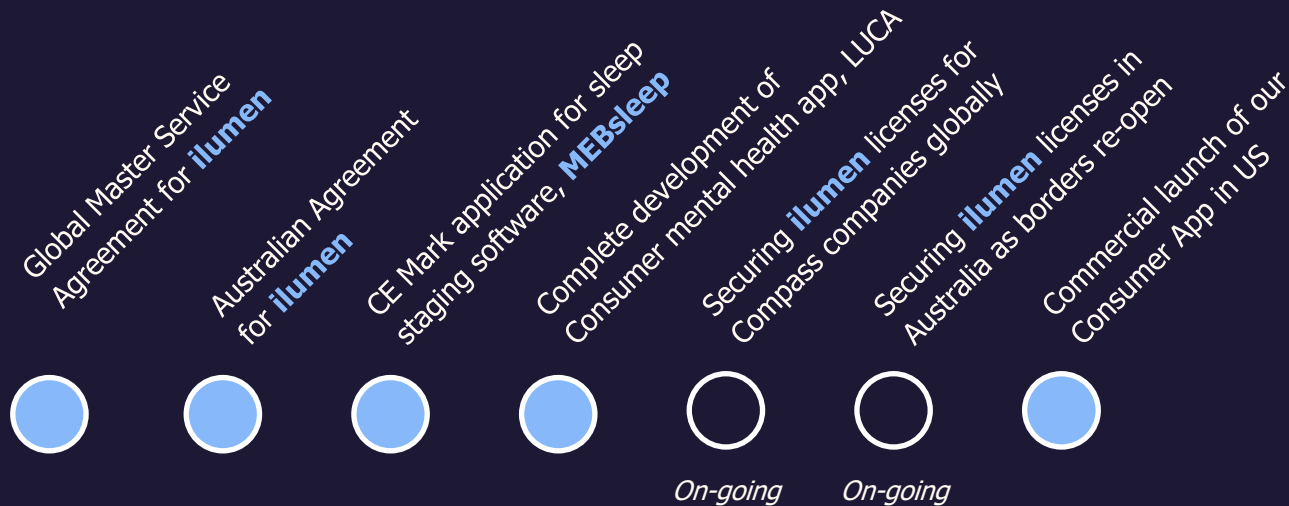
### MEB-003

Depression  
Monitoring of  
Pharmaceutical Effects

\*Trial will include efficacy of wearable devices alongside FDA approved medical hardware devices

## MAJOR MILESTONES

2021



2022



## APPLICATION OF FUNDS

Medical Software  
Development &  
Trial Costs  
**A\$2.3M**

Unregulated Sales  
& Marketing  
**A\$1.5M**



Product Software  
Development &  
Maintenance  
**A\$0.8M**

Corporate &  
Working Capital  
**A\$1.1M**





## BOARD OF DIRECTORS



**CLAUDE SOLITARIO**  
Managing Director  
Founder



**PETER CARLISLE**  
Non - Executive Director  
Managing Director, Olympics &  
Action Sports, Octagon Worldwide



**MELANIE LEYDIN**  
Non-Executive Director  
CA, FGIA



**MATHEW WATKINS**  
Company Secretary  
B. Bus. (Acc) Swinburne, CA

## GROWTH & ADVOCACY ADVISORY BOARD



**PETER CARLISLE**  
Managing Director, Olympics &  
Action Sports, Octagon Worldwide



**ELIZABETH LOMBARDO, PhD**  
Global & Virtual Keynote  
Speaker and Author



**JOHN MATHIAS**  
Chief Development Officer  
MedBridge Healthcare



**MICHAEL PHELPS**  
Mental Health Advocate



**PATRICK KENNEDY**  
Former US Congressman  
Founder, Kennedy Forum

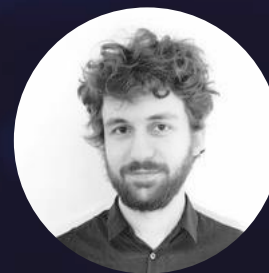
## EXECUTIVE TEAM



**CLAUDE SOLITARIO**  
Managing Director  
Founder



**ARCHIE DEFILLO**  
Chief Medical Officer



**MASSIMILIANO GRASSI**  
Head of Artificial Intelligence



**DR GIAMPAOLO PERNA**  
Clinical Consultant



**JENNIFER SOLITARIO**  
Senior Vice President  
Corporate Health



**SARAH MELLEN**  
Creative Director



**ERNIE TURSICH**  
Principal Quality and  
Regulatory Affairs



**RENEE STANTON-HORNE**  
Operations and  
Accounts Manager



medibio

**CLAUDE SOLITARIO**  
Managing Director

**Melbourne**  
Level 4, 100 Albert Road  
South Melbourne VIC  
3205

**United States HQ**  
8696 Eagle Creek Circle  
Savage, MN 55378