



TASSAL GROUP LIMITED  
INVESTOR DAY TASMANIA

---

SALMON + ESG

7 April 2022



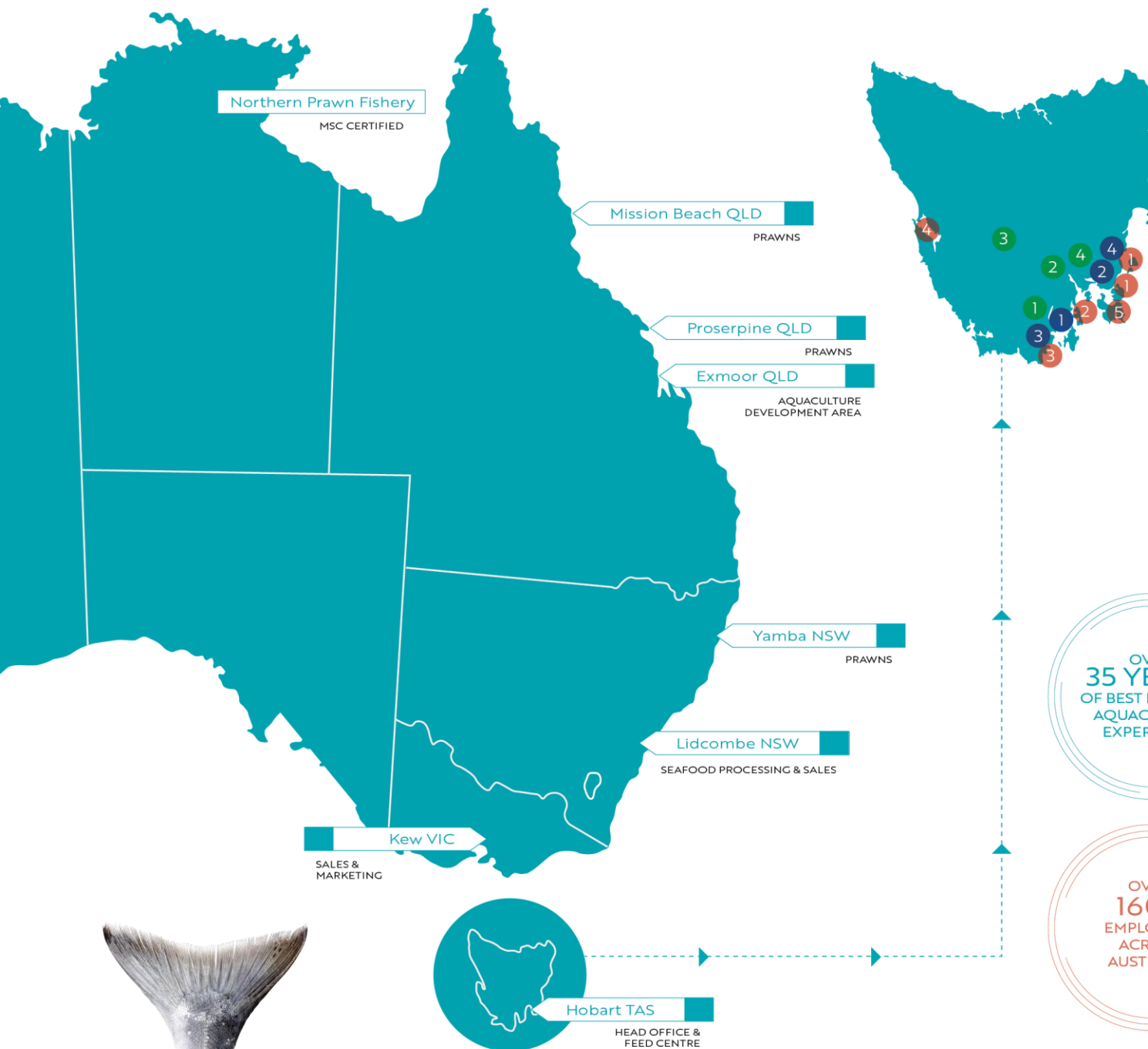


# TASSAL'S FOOTPRINT

---

The right side of sustainability





## Our footprint

### OUR FOOTPRINT: SEAFOOD & PRAWNS

Northern Prawn Fishery - Xanadu  
Mission Beach QLD - Prawn farm, hatchery & processing facility  
Proserpine QLD - Prawn farm, hatchery & processing facility  
Exmoor Station QLD - Aquaculture Development Area  
Yamba NSW - Prawn farm & processing facility  
Lidcombe NSW - Seafood processing facility

### OUR FOOTPRINT: SALMON

#### MARINE FARMING ZONES

1. Eastern Zone  
Okehampton Bay & Port Arthur
2. Channel Zone  
D'Entrecasteaux Channel
3. Southern Zone  
Dover & Huon River
4. Western Zone  
Macquarie Harbour
5. Storm Bay Zone  
Nubeena & West of Wedge

#### FRESHWATER HATCHERIES

1. Rookwood I & II  
Ranelagh
2. Russell Falls & Karanja  
Mount Field
3. SALTAS (industry hatchery)  
Wayatinah
4. HRAS (future development)  
Hamilton

#### PROCESSING FACILITIES

1. Huonville  
Salmon processing
2. Margate  
Salmon processing
3. Dover  
Salmon processing
4. Triabunna  
Rendering facility

OVER  
**35 YEARS**  
OF BEST PRACTICE  
AQUACULTURE  
EXPERIENCE

IN 1H22  
WE PRODUCED  
23,992t SALMON  
822t PRAWNS








OVER  
**1600**  
EMPLOYEES  
ACROSS  
AUSTRALIA

AQUACULTURE  
IS ONE OF THE  
MOST EFFICIENT  
FORMS OF PROTEIN  
PRODUCTION




AUD  
**\$284**  
MILLION INVESTED  
IN AUSTRALIAN  
SUPPLIERS  
IN 1H22

# Our FOOTPRINT is on the RIGHT SIDE of sustainability

TASSAL SALMON AND TROPIC CO PRAWNS PERFORM WELL WHEN COMPARED TO OTHER LAND ANIMAL PROTEINS

|   |  |  |  |  |  |  |  |
|---|---|---|---|---|---|---|--|
| PROTEIN RETENTION <sup>2</sup>                          |   |   | 28%   | 32%   | 37%   | 21%   | 13%  |
| FEED CONVERSION RATIO (FCR)                             |   |   | 1.3   | 2.1   | 1.6 <sup>3</sup>  | 3.1 <sup>4</sup>  | 8.0 <sup>2</sup>   |
| EDIBLE MEAT PER 100KG FEED <sup>5</sup>                 |   |   | 48kg  | 47kg  | 39kg  | 19kg  | 7kg  |
| CARBON FOOTPRINT (KG CO <sub>2</sub> -e/KG EDIBLE MEAT) |   |   | 12kg  | 11kg  | 7kg   | 13kg  | 66kg   |

1. All data presented for Tassal and Tropic Co based on raw data provided by Tassal.  
2. Based on global average taken from Fry et al (2018) Feed conversion efficiency in aquaculture: do we measure it correctly? Environ. Res. Lett. 13 024017  
3. Based on average for Australian grown broilers taken from <https://www.chicken.org.au/facts-and-figures/>  
4. Based on average for Australian grown pork taken from <http://porkcra.com.au/wp-content/uploads/2016/06/4C-117-Final-report.pdf>  
5. Based on global average taken from <http://www.fao.org/glean/results/en/#c300947> converted from kg protein to kg edible meat using FSANZ Australian Food Composition Database <https://www.foodstandards.gov.au/science/monitoringnutrients/afcd/Pages/default.aspx>

|   |  | SALMON LAND-BASED RAS IF BASED IN NSW   | SALMON LAND-BASED RAS IF BASED IN TASMANIA  |
|---|---|---|---|
| PROTEIN RETENTION                                       |   |  |  |
| FEED CONVERSION RATIO (FCR)                             |   | 28%   | 28%   |
| EDIBLE MEAT PER 100KG FEED                              |   | 1.3   | 1.1 <sup>1</sup>  |
| CARBON FOOTPRINT (KG CO <sub>2</sub> -e/KG EDIBLE MEAT) |   | 48kg  | 48kg  |
|   |   | 12kg  | 49kg <sup>2</sup>   |
|   |   |   | 18kg <sup>2</sup>   |

1. FCR of 1.1 based on a 10% improvement of FCR in RAS systems  
2. The carbon footprint of land-based grow out RAS has been estimated using publicly available production volumes and energy use values for existing land-based RAS grow-out operations. We have created hypothetical scenarios of land-based RAS facilities, one located close to market in N.S.W. and the other in Tasmania using current feed composition and emission factors for each state

Farmed salmon is one of the most eco-friendly animal proteins available. It has a lower carbon footprint, land use, freshwater consumption and feed conversion rate than many other protein options.

TASSAL'S RESPONSIBLE BUSINESS ROADMAP SETS OUT AREAS FOR ACCELERATION



responsible business roadmap.

playing our part for waste free oceans coasts and households

WASTE

being a responsible global citizen and unlocking our people potential while embracing our ZeroByChoice safety culture

PEOPLE & COMMUNITIES

towards climate and carbon neutral

CLIMATE & CIRCULARITY

every drop counts

FRESHWATER

driving sustainability through traceability, security and responsibility

RESPONSIBLE SOURCING

a pathway for ongoing value creation + confidence through transparency, strategy and leadership to put us on track to be one of the world's most sustainable protein producers

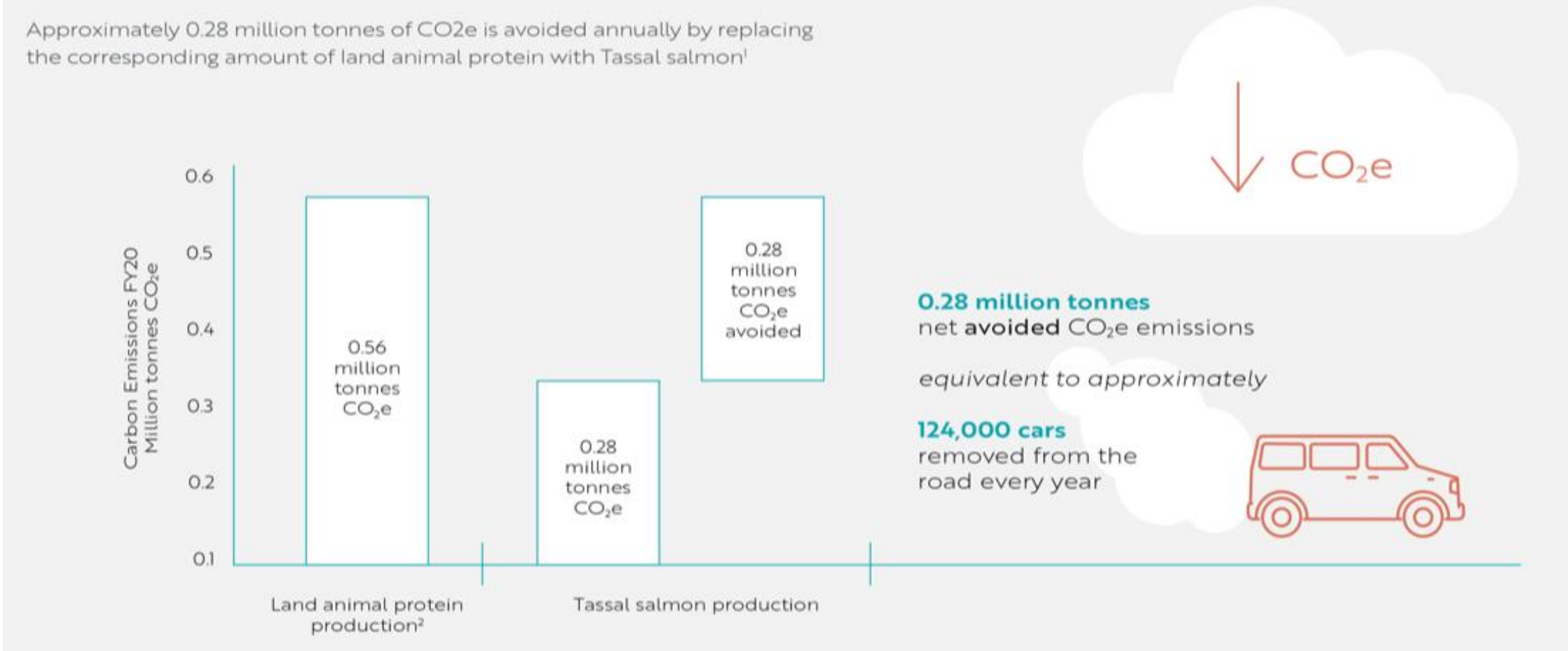
GOVERNANCE

we care about the wildlife in the environment and our stock is thriving and healthy

ANIMAL WELFARE



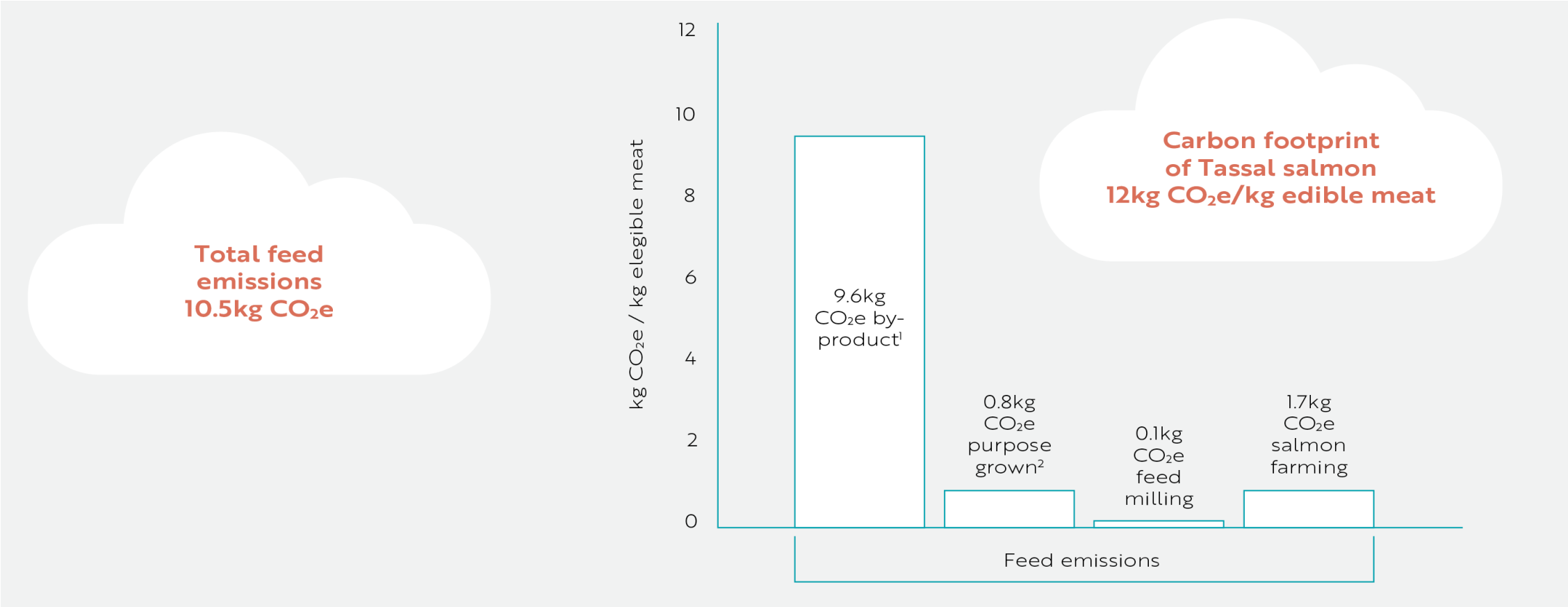
# Our FOOTPRINT is minimising impact through avoided carbon emissions



1. Based on edible meat equivalents  
2. Land animal protein is calculated using a consumption weighted average of beef, lamb, chicken and pork taken from ABARES Australian Commodities, March Quarter 2021



# Our FOOTPRINT – the breakdown of emission sources



1. By-product such rendered land animal by-products and trimmings from fish processed for human consumption  
2. Purpose grown and caught ingredients including agricultural ingredients (wheat, soya derivatives, corn gluten and vegetable oils) and fishmeal and fish oil sourced from reduction fisheries





# ESG ... SUSTAINABILITY + RESPONSIBLE BUSINESS







FOCUSING ON THE THINGS THAT MATTER

---

Australia's Blue AgTech leader



# Focusing on the THINGS THAT MATTER drives sustainable growth

TASSAL CONTINUES TO FOCUS ON ACHIEVING THE **RIGHT BALANCE** BETWEEN **MINIMISING OUR ENVIRONMENTAL IMPACT** AND **MAXIMISING SHAREHOLDER VALUE** TO ENSURE EARNINGS AND RETURNS GROWTH IS OPTIMISED AND SUSTAINABLE.

## STRATEGY

Delivering shareholder value through safe and sustainable operations

## RIGHT TO OPERATE

(i.e. our “Balanced Scorecard”) world leading environmental certification, investment in societal/community and brand value credentials

## RIGHT TO GROW

Optimal margins, reduce operating costs, maintain existing channels/grow emerging ones, product innovation

## RESPONSIBLE BUSINESS - BALANCED SCORECARD

### RESPONSIBLE BUSINESS SCORECARD

December 2021

Our “Responsible Business measure” is underpinned by our five Ps; our people; our planet; our product; our prosperity and our principles of governance. Each category is calculated against multiple aspects, goals and targets.



OUR RESPONSIBLE BUSINESS MEASURE 87.3%

#### Note:

“People” % negatively impacted by Tassal’s TRIFR. Target TRIFR <10. At the end of December 2021 TRIFR was 14.2. TRIFR negatively impacted by a lost time incident for Dover of 20 in May 2021.

## OUR 1H22 ACHIEVEMENTS





## OUR CORE ... what drives us as Australia's Blue AgTech Leader

TASSAL IS AUSTRALIA'S BLUE AGTECH LEADER AND THE LARGEST VERTICALLY INTEGRATED SEAFOOD PRODUCER IN AUSTRALIA

We are a purpose driven company, and we know that being a responsible business is more than sustainability and routine disclosure – it's about learning from the past, innovating and evolving into the future.

With this in mind, we have evolved our company's purpose, embracing what is truly at our core and driving shareholder value.

“ Our ongoing prosperity affords us the opportunity to deliver both ongoing sustainable shareholder returns and a healthy planet.

MARK RYAN, MD & CEO

OUR PURPOSE  
ignites & inspires us...

A prosperous, healthy planet for future generations.

OUR AMBITION  
fuels us...

Sustainably produced and accessible food, clean water, and a healthy planet.

OUR PLEDGE  
drives us...

As Australia's Blue AgTech Leader, our people proudly believe in our responsibility to ensure water is a sustainable, and prosperous resource for all.





# ESG AND SUSTAINABILITY

---

Optimising (minimising) Tassal's impact.



# OUR CORE ...

THE LARGEST VERTICALLY INTEGRATED SEAFOOD PRODUCER IN AUSTRALIA

## OUR 5 PILLARS (5P's) OF A RESPONSIBLE BUSINESS AND OUR VALUES

Our 5P'S and shared values are an essential part of delivering on our purpose, business objectives and culture – they define us. They underpin and guide our commitment, attitude, how we work and the quality of our products.

## OUR 5 PILLARS OF A RESPONSIBLE BUSINESS – ‘5P’s



## ZEROBYCHOICE

At Tassal, safety is one of our highest priorities. It drives and underpins our ZeroByChoice safety culture. ZeroByChoice, my choice - our choice.



TOTAL RECORDABLE INJURY FREQUENCY RATE (TRIFR)

| FY18  | FY19  | FY20 | FY21  | 1H22  |
|-------|-------|------|-------|-------|
| 12.18 | 12.05 | 8.03 | 14.13 | 14.21 |

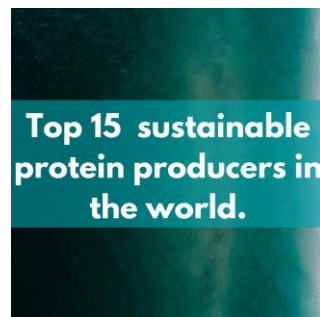
## OUR VALUES





# Tassal ranked #1 SUSTAINABILITY amongst Australian food producers

## ACHIEVEMENTS



“Australia should aspire to having the world’s best aquaculture industry and this result proves we are on the right track.”

MARK RYAN, MD & CEO



CERTIFIED



100 %

harvested salmon volume certified.

97 %

prawn operations compliance.

98 %

salmon farming compliance.

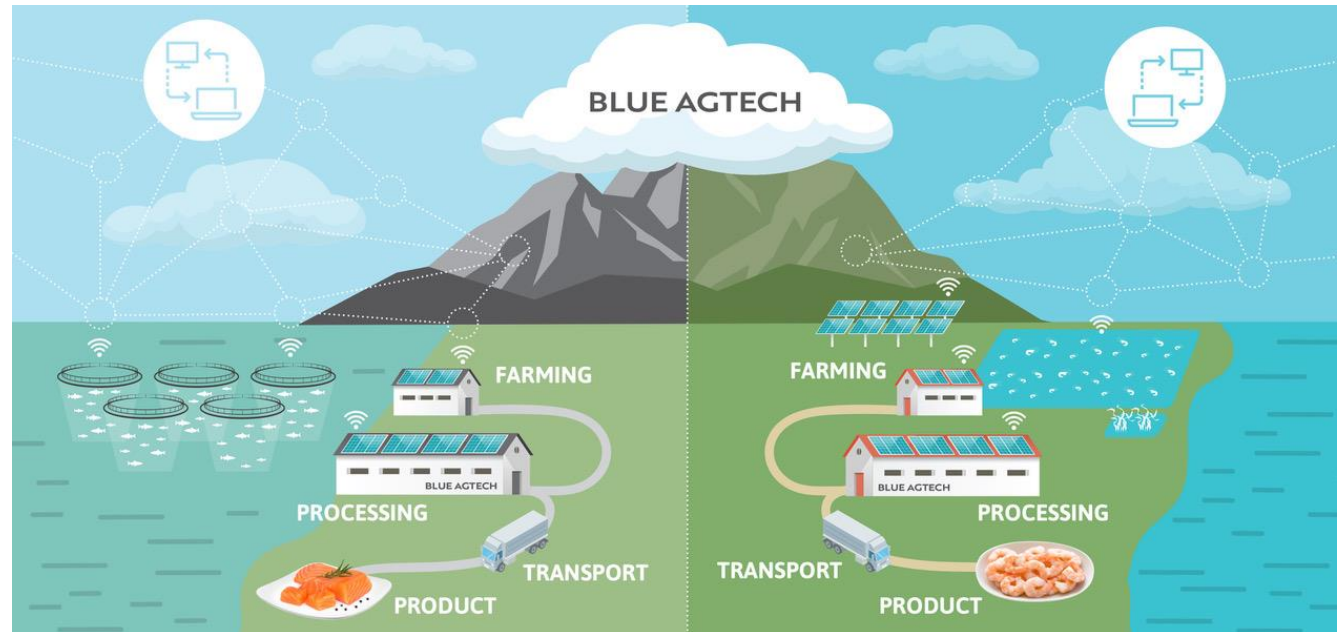
100 %

salmon hatchery and processing compliance.

SEE APPENDIX 1 FOR ESG HIGHLIGHTS

# UNLOCKING value through innovation and technology

TASSAL HAS INTRODUCED TECHNOLOGICAL ADVANCES TO FARMING, PRODUCTION AND SUPPLY



## BLUE AGTECH

To responsibly grow the value of aquaculture through the adoption of technology and innovation.

Artificial intelligence to support behavioural analysis of stock.  
Automation of pond and pen aeration.  
Real time access to critical environmental information.  
Automated remote feeding.  
Increased inventory evaluation.  
24/7 in pen underwater visuals, including night vision (salmon).  
24/7 in pond underwater audio (prawns).  
Nature based solutions, i.e. seaweed, solar and alternate energy sources

## SMART FARMING +

Tassal has introduced technology to both large scale salmon and prawn farming operations, bringing an integrated feed, welfare and environmental management experience to our farmers. Real time in-pen/pond data, visuals and sensing across stock behaviour, climatic and environmental monitoring coupled with AI and localised predictive tools are supporting improved yields, reduced feed wastage, reduced environmental impact, agility to respond to natural challenges farmers face and informed decisions are being made on the spot.



## SEAWEED initiative commenced with a pilot R&D project

SEAWEED OFFERS A NATURE-BASED SOLUTION FOR WATER QUALITY RESTORATION WHILE ALSO UNLOCKING MARKET OPPORTUNITIES IN TERMS OF COMMODITY OR FUTURE BLUE CARBON CREDITS

We continue to take a beyond carbon neutral approach and look toward both carbon and climate positivity. In 1H22, we initiated new R&D partnerships and initiatives to abate greenhouse gases through the introduction of a solar farm during FY23 and also introduced R&D trials on seaweed farming to abate nutrient outputs. These measures further support food system adaptation.

### FUTURE

We are looking into opportunities to commercialise seaweed harvest.

Opportunities include: fertiliser and soil conditioning, biochar for carbon sequestration, animal feed supplements and human food and nutraceuticals.



### FOOTPRINT OF PILOT R & D PROJECT

In 1H22, we converted 13HA of settlement pond area into seaweed production at our Proserpine Prawn Farm.

### PRODUCTION

Harvested 305t tonnes of seaweed by 31 December 2021.

### COLLABORATION

This has been spearheaded through a new partnership with the University of Sunshine Coast Seaweed Research Group.

### BIOREMEDIATION via SEAWEED

The Proserpine Prawn Farm is Tassal's largest and the principal site of future expansion. This is a nature-based solution to both reduce nutrient loads discharged from the farm and further protect the local environment.

# Technology INNOVATION supporting a sustainable pathway forward

CONTINUALLY IMPROVING THE ENERGY EFFICIENCY OF OUR OPERATIONS, TRANSITIONING TO RENEWABLE ENERGY AND INVESTING IN NEW TECHNOLOGIES



## TASSAL'S SALMON FARMING IS CUTTING EDGE

Completion of Ocean Sanctuary Pen roll-out to enhance the safety and welfare of our people and fish while decreasing wildlife impacts and interactions

Improved survival and welfare through successful implementation of POMV vaccine

Pico oxygenation trial which saw an enhanced in-pen environment for salmon during summer

Implementation of Tassal's diverless retrieval system allowing improved product for our rendering facility

## TASSAL'S SMARTFARMING TECHNOLOGY AND WAYS OF WORKING HAVE BEEN ROLLED OUT ACROSS OUR PRAWN FARMS

Biggest leap in innovation to prawn farming globally through combination of auto-feeders and diets

Enabled real time monitoring of the welfare of our prawns

Construction of state-of-the-art hatchery and processing facilities

A BLUEPRINT TO SUBSTITUTE ALL MARINE BASED COMPRESSORS ON OUR SALMON FARMS TO ELECTRIC COMPRESSORS TO FURTHER REDUCE GHG EMISSIONS AND NOISE IN SENSITIVE AREAS IS IN MOTION

ACTIVELY EXPLORING PARTNERSHIPS AND INITIATIVES TO UNLOCK BLUE CARBON OPPORTUNITIES THROUGH SEAWEED AND SUPPORT FOOD SYSTEMS ADAPTION





A photograph of ocean waves with a blue and teal color palette. Two pieces of dark, crumpled plastic waste are visible on the surface of the water, one slightly further out than the other. The background shows a soft, hazy horizon under a pale sky.

ESG

---

Our responsible business in action

# ESG ... Our RESPONSIBLE BUSINESS in action

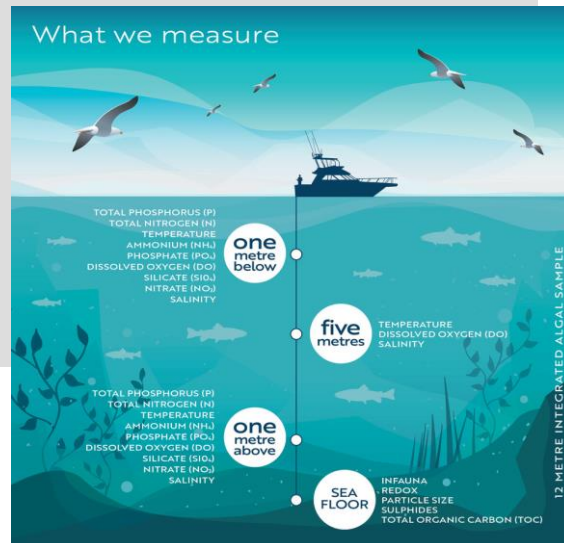
OUR RESPONSIBLE BUSINESS APPROACH IS A STRONGER, MORE STABLE, AND MORE ENDURING ESG AND SUSTAINABILITY VALUE PROPOSITION FOR OUR STAKEHOLDERS.

Innovation and best practice continue to drive action and change in our operations as we further improve production, fish health and welfare, while keeping our people safe and the environments we operate in healthy.

Our ambition to deliver a responsible and inclusive business is matched by our transparency and communication of information on what matters to our stakeholders – health of the marine environment, welfare, feed and climate.

## BROADSCALE ENVIRONMENTAL MONITORING PROGRAMS

This monitoring allows us, our regulators and the scientific community to better understand the marine and estuarine health of our coastal waterways and potential impacts from finfish farming practices.



## MARINE ENVIRONMENT

Like all marine users, the impact of Tasmania's salmon farming industry is managed through dozens of legislation, regulations and licence conditions.

As responsible users of shared waterways, Tassal have regulatory and voluntary programs in place to understand and measure overall impact.

Any potential impacts to natural habitats, biodiversity and ecosystem functions are assessed through a range of environmental monitoring programs, including requirements within sustainability certifications.

Environmental regulation of the Tasmanian salmon industry is an important part of protecting and enhancing Tasmania's environment.

When it comes to the marine environment, it is really important to remember that fish convert food substantially more efficiently than humans, and in the context of the ocean, fish waste contributes valuable nutrients to the ecosystem. This is closely monitored.



# ESG ... Our RESPONSIBLE BUSINESS in action

WE CARE ABOUT THE WILDLIFE IN THE ENVIRONMENT AND OUR STOCK IS THRIVING AND HEALTHY

## FEED

Feed innovations led by salmon farmers are reducing overfishing and helping preserve wild fish stocks.

By shifting our fish to more of terrestrial-based ingredients, we've reduced pressure on wild fish stocks and supported our own fishes' health and nutritional benefits. As a result, we're ensuring farmed salmon remains one of the most resource-efficient animal protein options.

The nutrition of our salmon and prawns plays a crucial role in our sustainability journey. We work closely with our feed suppliers to maintain sourcing and traceability criteria to ensure we meet the requirements of all relevant third-party certifications.

Diet composition varies for each stage of the lifecycle to ensure that the nutritional requirements are met. Innovative diets are trialled each year to put novel ingredients to the test, without compromising performance or welfare. Our objective is to grow biomass efficiently with the lowest possible environmental footprint.

We evaluate the effectiveness of our feed strategy through frequent analysis of stock performance metrics including feed conversion ratios (FCR), growth rates, and survival, as well as environmental monitoring of the seafloor using remotely operated vehicles (ROV) to ensure any feed wastage is kept to a minimum.

## WINTER FEEDS

Our range of raw material options allows us to reduce our dependency on fish meal, the bulk of our winter diets do not require fish meal.



## Responsible Business Targets

- Develop feed strategy that considers the role of feed in biodiversity, climate, and nutritional systems

# ESG ... Our RESPONSIBLE BUSINESS in action

---

WE CARE ABOUT THE WILDLIFE IN THE ENVIRONMENT AND OUR STOCK IS THRIVING AND HEALTHY

## WELFARE

We are farmers first and foremost, and care for our animals and the environment in which we grow them.

Our animal husbandry and farming teams are consummate professionals at making sure our salmon and prawns are properly housed, fed, and protected from predators.

When we do that properly, our salmon and prawns are healthier, and they feed and grow better. We have a range of tools and processes to manage animal health and welfare, including animal health management plans for all our salmon and prawn farms, which outline our expectations around animal health and welfare and detail our procedures for maximising outcomes on a farm-by-farm basis.

Our animals are checked and monitored every single day for behaviour, appetite and any abnormal signs, and a specialised animal health department carries out diagnostic and routine visits.

We carry out animal health and welfare risk assessments before major husbandry events, such as smolt transport to sea sites or post-larval movement to our growout farms.

## Responsible Business Targets

- 100% of farming employees complete HAPPYfish animal welfare training
- Towards Tier 1 status under Business Benchmark on Farm Animal Welfare (BBFAW) by 2030, with an initial target of Tier 2 by 2025
- Zero use of antimicrobials listed as critically important by the World Health Organisation (WHO)
- Continued phase out of seal deterrents



# ESG ... Our RESPONSIBLE BUSINESS in action

---

WE CARE ABOUT THE WILDLIFE IN THE ENVIRONMENT AND OUR STOCK IS THRIVING AND HEALTHY

## CLIMATE CHANGE & RISING OCEAN TEMPERATURES

In a farming context, selective breeding over a 25 year time frame is expected to deliver and could see an improvement of at least 2.1 degrees in the maximum thermal limit of Tasmanian salmon.

This compares to predictions of between 1 and 7 degrees C increase in global temperatures over the next 100 years in various scientific papers<sup>1</sup>.

As we compare conservative estimates of improvement due to selection with the worst case scenario from the published predictions, we still see that it is possible to outpace the changes in average temperature due to climate change.

We are continuing to improve our fish husbandry and continuing to engage in collaborative research to improve the ability of our stocks to deal with climate change. We are also regularly conducting thermal challenge trials.

## Responsible Business Targets

- We aspire to be net zero by 2050, and are currently assessing our science-based datasets to set a climate roadmap to 2030
- Establish flagship carbon neutral farm program - one salmon farm and one prawn farm
- Spend \$60 million over three years on initiatives and R&D to reduce the impact of climate change on our operations

1: Ficke, A. D., Myrick, C. A. and Hansen, L. J. (2007). Potential impacts of global climate change on freshwater fisheries. Rev. Fish Biol. Fish. 17, 581-613.

# ESG ... Our RESPONSIBLE BUSINESS in action

## PLAYING OUR PART FOR WASTE FREE OCEANS, COASTS AND HOUSEHOLDS

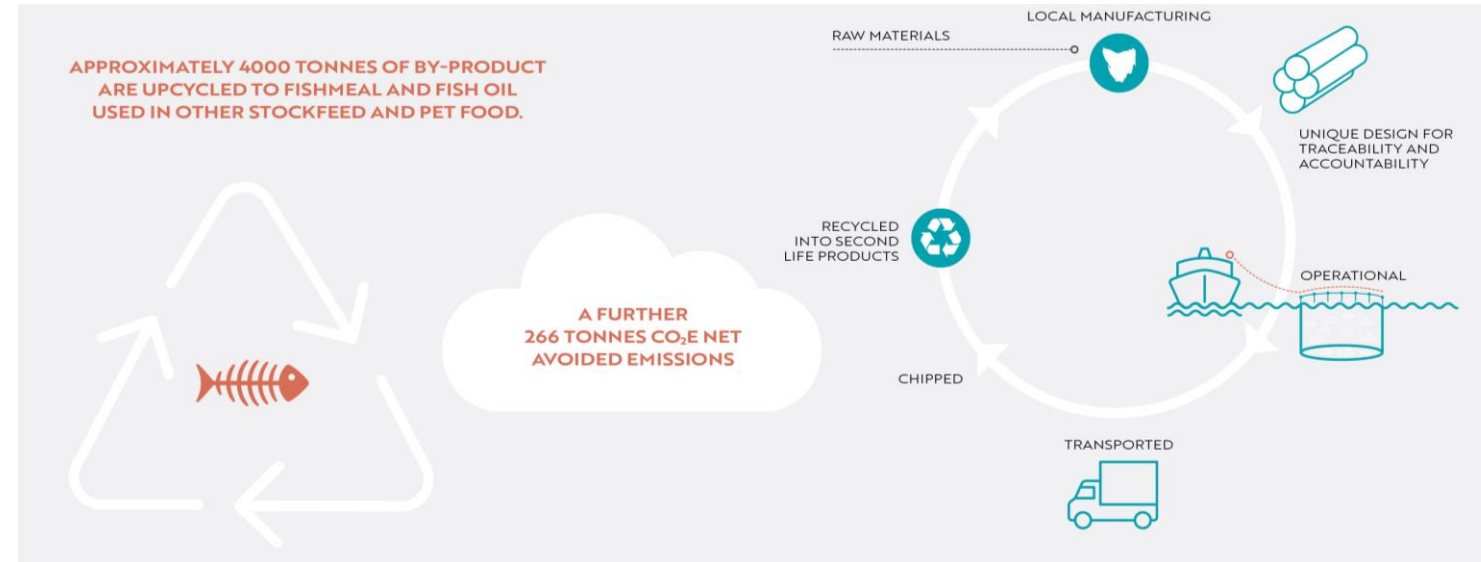
### CIRCULAR ECONOMY

Management of waste is critical for compliance, traceability, auditing and reporting. The majority of waste generated from our operations is fish and prawn waste, fish by-products, wastewater and sludges, which are all classified as controlled wastes.

Our Triabunna rendering facility was developed to downstream process the majority of salmon fish waste streams in Tasmania and produce a number of saleable products which in turn generates employment and commercial opportunities.

### Responsible Business Targets

- 100% polyethylene marine farming equipment is reused, recycled, or repurposed by 2025 (feed pipe, sea pens, stanchions, bird net stands)
- 95% diversion from landfill from processing plants by 2025
- 100% reusable, recyclable, or compostable packaging by 2025







# TASSAL'S SUSTAINABILITY METRICS

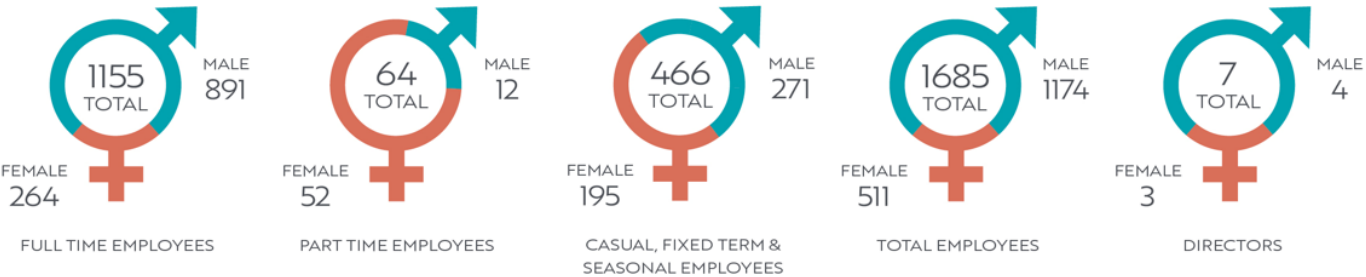
---

Measuring and reporting on our ESG results

# PEOPLE

SUSTAINABILITY IS MORE THAN THE ENVIRONMENT WE OPERATE IN, IT'S THE PEOPLE WE BACK AND THE COMMUNITIES WE SUPPORT THROUGH ALL OF LIFE'S CHALLENGES

Safety remains our number one priority



## TOTAL RECORDABLE INJURY FREQUENCY RATE (TRIFR)

| FY18  | FY19  | FY20 | FY21  | 1H22  |
|-------|-------|------|-------|-------|
| 12.18 | 12.05 | 8.03 | 14.13 | 14.21 |



## MARINE DEBRIS

| YEAR | RUBBISH REMOVED (M³) | HOURS COLLECTING | ATtribution TO TASSAL FARMS (%) |
|------|----------------------|------------------|---------------------------------|
| FY18 | 79.5                 | 1776             | 27                              |
| FY19 | 218.9                | 3881             | 22.5                            |
| FY20 | 99.6                 | 2268             | 15.3                            |
| FY21 | 110.2                | 2635             | 9.5                             |
| 1H22 | 48.7                 | 1636             | 5.3                             |





PLANET

WE ARE FARMERS, BUT WE ARE ALSO STEWARDS OF OUR OCEANS AND COASTS ON A JOURNEY OF INNOVATION AND CONTINUOUS IMPROVEMENT

MARINE FARMING COMPLIANCE

|   | FY18 | FY19 | FY20 | FY21 | 1H22  |
|---|------|------|------|------|-------|
| Remote Operated Vehicle (ROV) dives completed | 182  | 373  | 210  | 328  | 256   |
| Number in compliance                          | 179  | 350  | 200  | 306  | 250   |
| Compliance (%)                                | 98.4 | 93.8 | 95.2 | 93.3 | 97.66 |

GHG EMISSIONS

Tassal reports its energy consumption and greenhouse gas (GHG) emissions to the Commonwealth Government annually. By 31 October each year, Australian corporations that meet certain thresholds must report their emissions and energy information under the National Greenhouse and Energy Reporting scheme.

| YEAR | SCOPE 1 (TONNES CO <sub>2</sub> -e) | SCOPE 2 (TONNES CO <sub>2</sub> -e) | TOTAL (TONNES CO <sub>2</sub> -e) | NEW TO SCOPE  |
|------|-------------------------------------|-------------------------------------|-----------------------------------|---|
| FY18 | 21,426                              | 8,119                               | 29,546                            | n/a   |
| FY19 | 27,414                              | 12,395                              | 39,809                            | Prawn farm rehabilitation in QLD (on coal based grid) & NSW<br>Additional energy sources required for Rookwood hatchery post an electrical fire |
| FY20 | 35,883                              | 22,660                              | 58,544                            | Prawn farm expansion and operations in QLD (on coal based grid) & NSW<br>Introduction of the well boat to salmon operations                     |
| FY21 | 41,618                              | 27,618                              | 69,236                            | Expansion of POPS Proserpine (Stage 4 civil works)<br>Overall increase in production  |

SEAL INTERACTIONS (SALMON)

The foundation of our wildlife management is exclusion of wildlife from our stock with an ongoing focus on the inspection and maintenance of infrastructure to further reduce risk of entanglements. We are continually improving existing mitigation technology and regularly assessing new strategies to improve on our current infrastructure and management practices.

| YEAR | RELOCATION EVENTS | EUTHANISED | ACCIDENTAL DEATH (RELOCATION) | ACCIDENTAL DEATH (ENTANGLEMENT) |
|------|-------------------|------------|-------------------------------|---------------------------------|
| FY18 | 1344              | 1          | 0                             | 6                               |
| FY19 | 0                 | 0          | 0                             | 14                              |
| FY20 | 0                 | 0          | 0                             | 5                               |
| FY21 | 0                 | 2          | 0                             | 5                               |
| 1H22 | 0                 | 0          | 0                             | 2                               |



SALMON HATCHERY COMPLIANCE

BIRD INTERACTIONS (SALMON)

| YEAR | ACCIDENTAL DEATH | ALIVE AND RELEASED |
|------|------------------|--------------------|
| FY18 | 12               | 439                |
| FY19 | 13               | 485                |
| FY20 | 17               | 455                |
| FY21 | 26               | 105                |
| 1H22 | 5                | 28                 |



SALMON PROCESSING COMPLIANCE



PRAWN OPERATIONS COMPLIANCE

BIRD INTERACTIONS (PRAWNS)

Expanded operations increased bird interactions. A dedicated wildlife officer remains focused on reducing operations.

| YEAR | MORTALITIES |
|------|-------------|
| FY20 | 23          |
| FY21 | 58          |
| 1H22 | 68          |



0 ANTIBIOTIC USE



0 ESCAPES



# PRODUCT

WE ARE AN ESSENTIAL SERVICE, PROVIDING RESPONSIBLY FARMED SEAFOOD FOR MILLIONS OF AUSTRALIANS THROUGH WHATEVER CHALLENGES THE WORLD FACES

## SUSTAINABILITY INITIATIVES



## FORAGE FISH DEPENDENCY RATIO (SALMON)

|       | CERTIFICATION REQUIREMENT | FY18 | FY19 | FY20 | FY21 | 1H22 |
|-------|---------------------------|------|------|------|------|------|
| FFDRm | <1.2                      | 0.31 | 0.37 | 0.40 | 0.27 | 0.15 |
| FFDRo | <2.52                     | 1.93 | 2.15 | 2.19 | 2.17 | 2.17 |

## THIRD-PARTY SUSTAINABILITY ACCREDITATIONS



## What's in our salmon feed



Land animal ingredients 34.1%  
Agricultural ingredients 54.6%  
Fish oil (reduction only) 8.0%  
Fishmeal (all sources) 3.3%

## What's in our prawn feed



Land animal ingredients 5.2%  
Agricultural ingredients 59.4%  
Fish oil (reduction only) 1.2%  
Fishmeal (all sources) 34.2%

## GLOBAL SEAFOOD SUPPLY

| AUSTRALIA | VIETNAM | THAILAND | CHINA |
|-----------|---------|----------|-------|
| 87.57%    | 11.23%  | 0.64%    | 0.56% |



# Disclaimer

---

This presentation has been prepared by Tassal Group Limited for professional investors. The information contained in this presentation is for information purposes only and does not constitute an offer to issue, or arrange to issue, securities or other financial products. The information contained in this presentation is not investment or financial product advice and is not intended to be used as the basis for making an investment decision. The presentation has been prepared without taking into account the investment objectives, financial situation or particular need of any particular person.

No representation or warranty, express or implied, is made as to the fairness, accuracy, completeness or correctness of the information, opinions and conclusions contained in the presentation. To the maximum extent permitted by law, none of Tassal Group Limited, its directors, employees or agents, nor any other person accepts any liability, including, without limitation, any liability arising out of fault.

In particular, no representation or warranty, express or implied is given as to the accuracy, completeness or correctness, likelihood of achievement or reasonableness of any forecasts, prospects or returns contained in this presentation nor is any obligation assumed to update such information. Such forecasts, prospects or returns are by their nature subject to significant uncertainties and contingencies.

Before making an investment decision, you should consider, with or without the assistance of a financial adviser, whether an investment is appropriate in light of your particular investment needs, objectives and financial circumstances. Past performance is no guarantee of future performance.

The distribution of this document in jurisdictions outside Australia may be restricted by law. Any recipient of this document outside Australia must seek advice on and observe such restrictions.



TASSAL GROUP LIMITED  
LEVEL 9, 1 FRANKLIN WHARF, HOBART TAS 7000  
+61 3 6244 9035  
TASSAL@TASSAL.COM.AU

TASSALGROUP.COM.AU

