

*Shareholder and Investor Briefing  
SQM Earn-in Joint Venture Agreement*

James Chirnside - Managing Director  
Dr. Ben Hines – Head of Exploration

11:30, 28 July 2022

Virtual Meeting via Zoom

ASX:DTM



## Forward Looking Statements Caution

*Certain statements contained in this document may constitute forward looking statements. Such forward-looking statements are based on a number of estimates and assumptions made by the Company and its consultants in light of experience, current conditions and expectations of future developments which the Company believes are appropriate in the current circumstances. These estimates and assumptions while considered reasonable by the Company are subject to known and unknown risks, uncertainties and other factors which may cause the actual results, achievements and performance of the Company to be materially different from the future results and achievements expressed or implied by such forward-looking statements.*

***Investors are cautioned that forward looking information is no guarantee of future performance and accordingly, investors are cautioned not to place undue reliance on these forward-looking statements.***



## Corporate Directory

### ◀ Corporate Metrics

- ASX Code - DTM
- Shares on Issue ~ 135.3m
- Options on Issue ~ 36.0m
  - (26.5m expiring 30 Sep 2022, \$0.30 Strike)
- Performance Rights ~3.4m
- Market Capitalisation @ \$0.08 = ~A\$11.0m

### ◀ Board

- James Chirnside – Chairman & Managing Director
- Richard Udovenya– Independent Director
- Carl Swensson – Non-executive Director
- Julie Edwards – Company Secretary

### ◀ Management

- Dr. Ben Hines – Head of Exploration
- Scott Trutwein– Project Geologist
- Michael Roberts – Finance & Administration

### ◀ Service Providers

- Accounting, Co. Sec, ASX Reporting, Tax – Lowell Accounting Services
- Audit - Morrows
- Legal Advisors – Resources Law International
- Environment & Cultural Heritage – Biosis
- Lab Services – ALS Limited



## Sociedad Química y Minera de Chile S.A. - SQM

### ◀ SQM Profile

- Largest Lithium producer and refiner in the world
- 50/50 Joint Venture with Wesfarmers in the Mt Holland Lithium Project (Earl Grey mine and Kwinana refinery)
- Established 1968
- Headquartered Santiago, Chile
- NYSE Code – NYSE:SQM
- US\$ 27bln Market Capitalisation
- Revenues of US\$2.86bln
- Customers in 110 countries
- Chilean chemical company producing industrial and agricultural chemicals
- Employs ~6,000 people worldwide throughout 20 international offices

### **Carlos Díaz SQM Executive VP for Lithium said:**

*“We are looking forward to this new endeavour with Dart to find and potentially develop the first lithium project in Victoria. We believe that the combination of both partners’ strengths and expertise will factor in the success of this partnership”.*

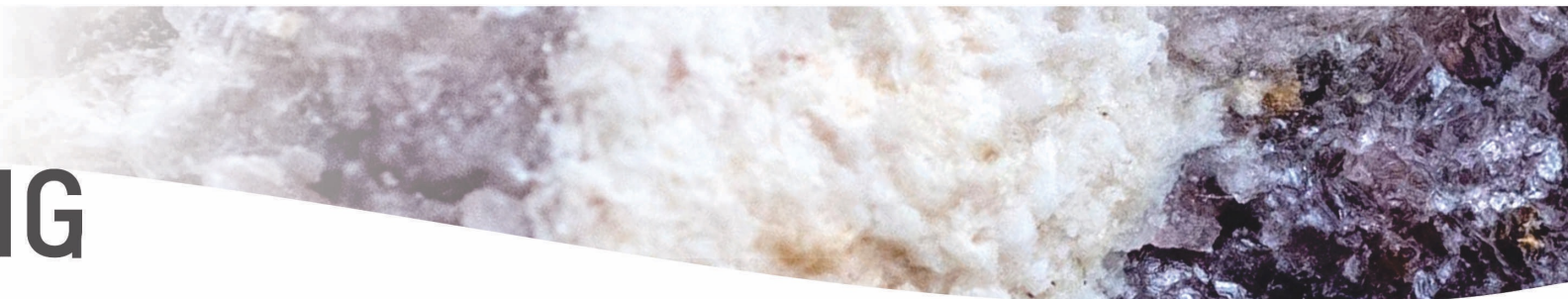




## Key Terms of the Earn-in Joint Venture Agreement

### ⚡ Key Terms

- Dart has granted the right but not the obligation to sole fund exploration expenditure totaling A\$12m over six years
- **Phase 1** Earn-in 30% \$3m, **Phase 2** Earn-in 21% \$3m, **Phase 3** Earn-in 19% \$6m - **Totaling 70% and \$12m**
- Beyond 70% each party will fund its own proportional expenditure
- SQM may elect to enter into a joint venture agreement (JVA) at any time after earning 30%
- Dart has been appointed the manager of the project
- Mineral rights extend to Lithium and associate minerals
- Dart to be paid \$300,000 after the renewal of EL5315 (renewal application lodged)
- Mutual Right of First Refusal (ROFR) if either party wishes to sell its interest in the project
- Technical advisory committee (TAC) has been established (DTM x 2, SQM x 2) and planning has started



## Planned Lithium Exploration

- **Eskdale:**
  - Mapping & sampling
  - LiDAR outcrops - ground truthing
  - Walkup roadside drilling (RC and Diamond)
  - Off-road drill targets permitting
  - DGPR geophysics
  - Roadside targets infill drilling
- **Glen Wills:**
  - Mapping & sampling
  - Walkup roadside drilling (RC and Diamond)
  - Roadside targets infill drilling
  - DGPR geophysics
  - Off-road drill targets permitting
  - Roadside targets infill drilling



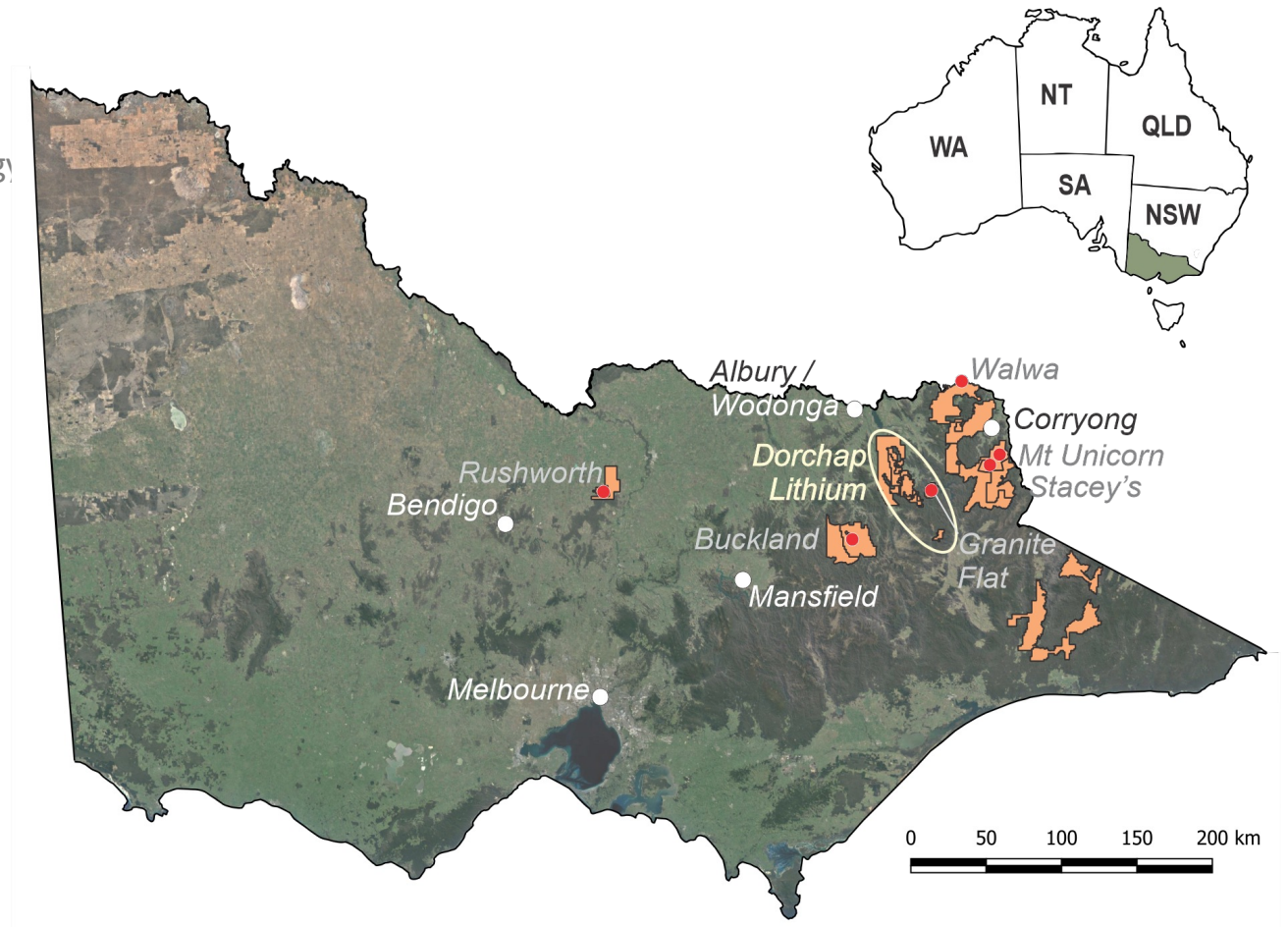
## EXPLORATION UPDATE

Dart's Head of Exploration, Geologist Dr. Ben Hines posing next to a pegmatite dyke that is typical of the Dorchap Lithium Project's mineralisation style



# EXPLORATION LICENCES, FOOTPRINT & PROJECTS

- ~5,000 km<sup>2</sup> tenement area
- Focus on NE and Eastern Victoria
- Significant team experience in NE Victorian Geology
  - Central Lachlan Fold Belt
    - *Silurian to Devonian magmatism*
      - *S & I type granites*
    - *Three orogenic events*
- Diverse geological setting
  - *Orogenic Au*
  - *Porphyry Cu-Au, Mo-Cu-Ag*
  - *Li-Cs-Ta Pegmatites*
- Diverse exposure in precious and critical metals
- 9 Historic Goldfields
- >1,000 LCT Pegmatite dykes
- 8 Au-Cu, Mo-Cu Porphyry Projects

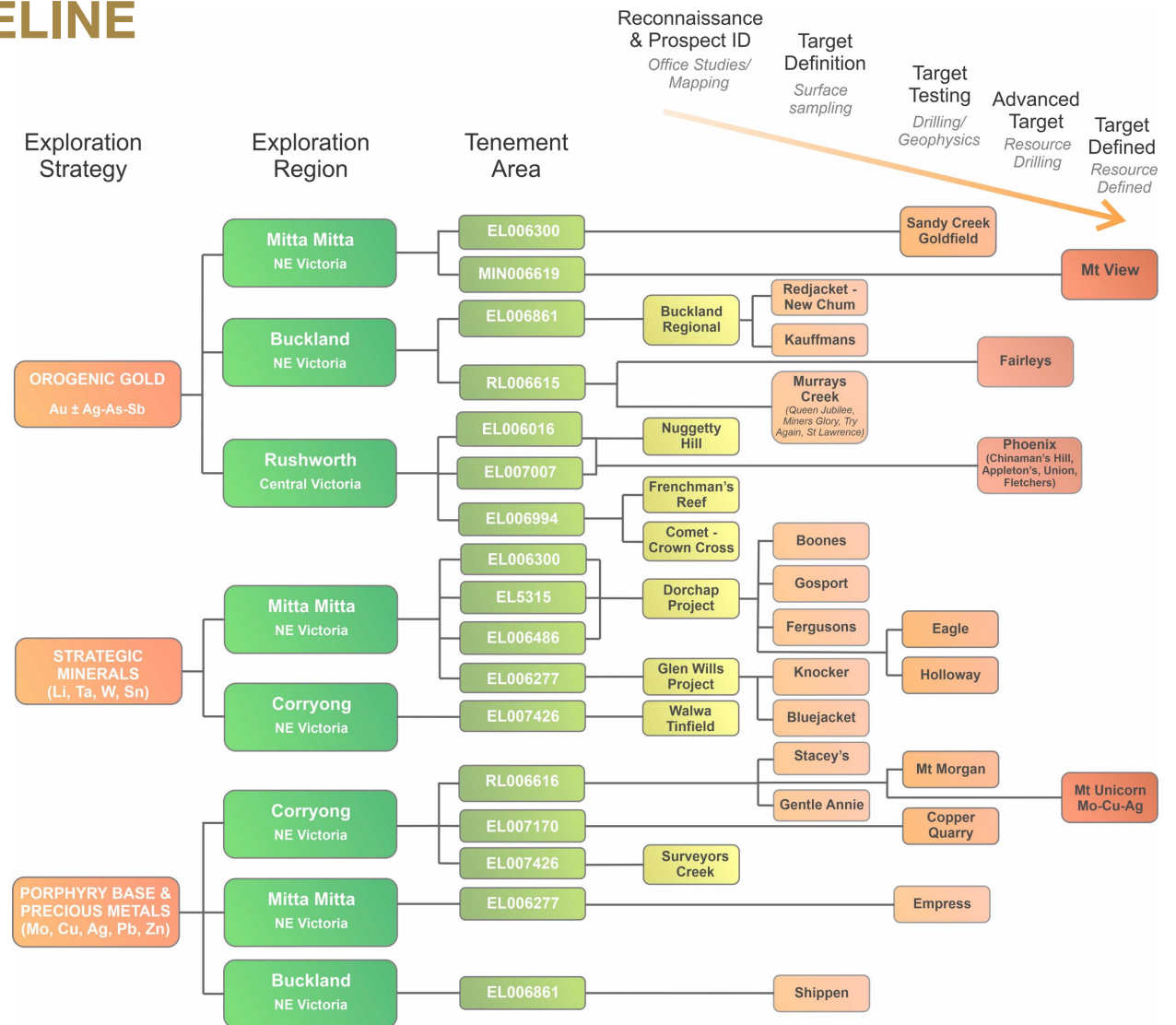




# EXPLORATION PROJECT PIPELINE

- Three-pronged exploration approach

- Orogenic Gold
- Strategic/Critical & Technology metals (Li, Ta, W, Sn)
- Porphyry Cu-Au, Cu-Mo



# EXPLORATION – YEAR TO DATE

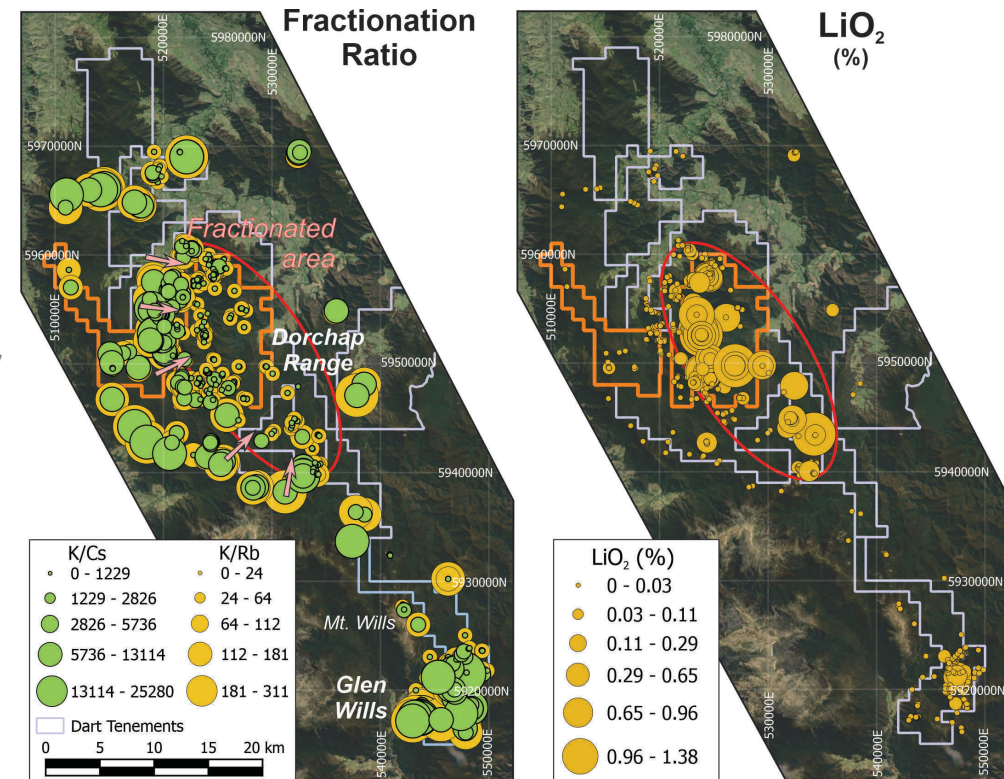
- Dorchap Lithium Pegmatites
  - XRD identified primary spodumene mineralisation
- Granite Flat Cu-Au Porphyry
  - Drill testing geophysical targets (997m)
  - Completion of soil survey
- Buckland Orogenic Gold
  - Orientation soil survey across Shippens Gully area
- Rushworth Orogenic Gold Project
  - Reconnaissance sampling & structural mapping
  - pXRF analysis of drill pulps – geochemical characterisation
  - Regional soil geochemical sampling & testing





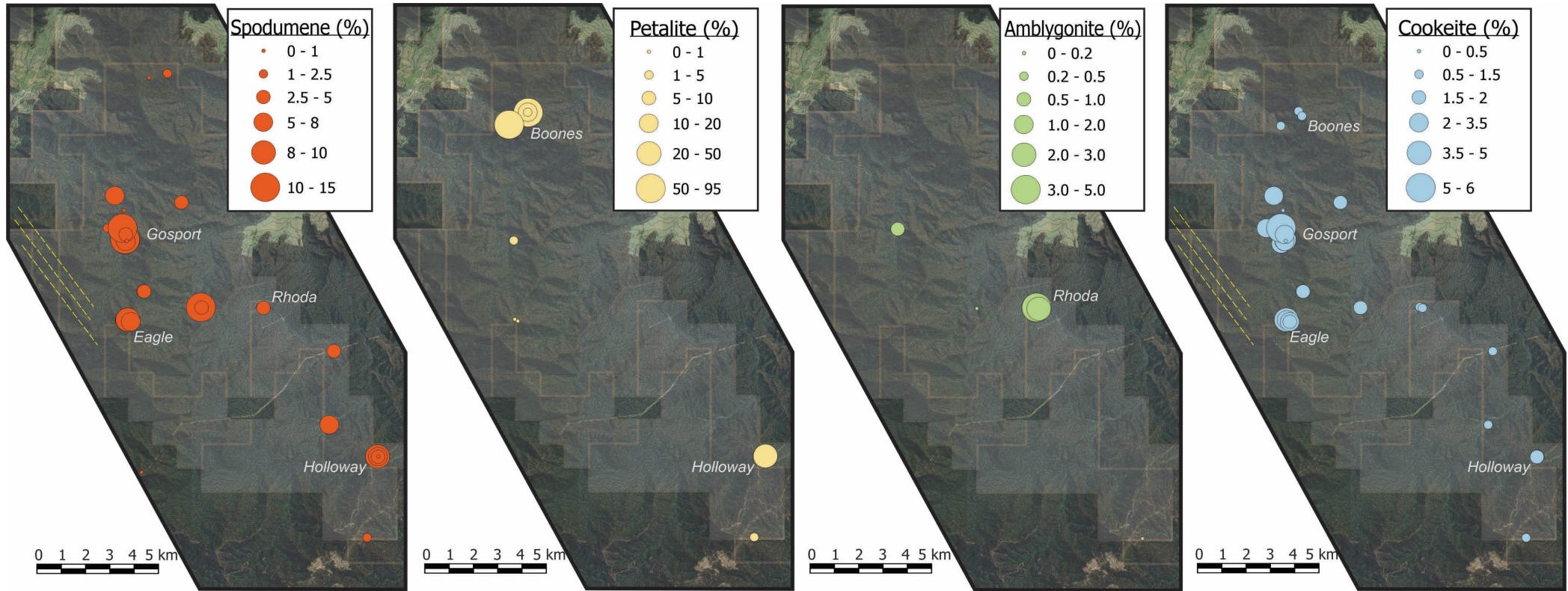
# DORCHAP LITHIUM PROJECT

- **Location**
  - Situated in the Dorchap Range, between Eskdale & Glen Wills
- **Scale**
  - 20x12km zone of highly-fractionated pegmatites identified from surface sampling
  - >1,000 LTC pegmatite dykes across the dyke swarm
  - Multiple Li mineralised pegmatite dykes identified, with Li hosted primarily by spodumene
- **Style**
  - Pegmatite hosted Lithium-Caesium-Tantalum (LTC) mineralisation
  - Spodumene & Petalite mineralisation with localized lepidolite & amblygonite
  - Exposure is often poor or obscured by heavy vegetation
- **Results Highlights**
  - 10m @ 1.38% Li<sub>2</sub>O (rockchip sampling)
  - 10m @ 1.22% Li<sub>2</sub>O (rockchip sampling)
  - 10m @ 0.95% Li<sub>2</sub>O & 20m @ 0.33% Li<sub>2</sub>O (Eagle Dyke, Channel sampling)
  - 16m @ 0.32% Li<sub>2</sub>O, (Bluejacket Dyke, Channel sampling)
  - 20m @ 0.332% Li<sub>2</sub>O from 2m, *including* 2m @ 1.158% Li<sub>2</sub>O (Roadside drilling)



ASX:DTM

# DORCHAP LITHIUM PROJECT



*XRD shows spodumene dominant*



# GRANITE FLAT Cu-Au PROJECT

- **Location**

- Situated adjacent to the Omeo Highway, between Mitta Mitta & Glen Wills

- **Scale**

- 2 × 1.5 km soil Cu-Au footprint, multiple smaller anomalies identified
- Significant remanent magnetism anomalies identified north of project footprint
- IP chargeability and resistivity anomalies identified across 1.5 × 2.0km footprint
- Significant intervals of Cu-Au mineralisation intersected up to 180m below surface

- **Style**

- Two mineralisation styles identified:
- Intrusion-related Cu-Au – long intervals of low-grade Cu-Au
- Hydrothermal overprint – Narrow silica-sulphide veins of high-grade Au-Cu-Ag ± Pb, Zn

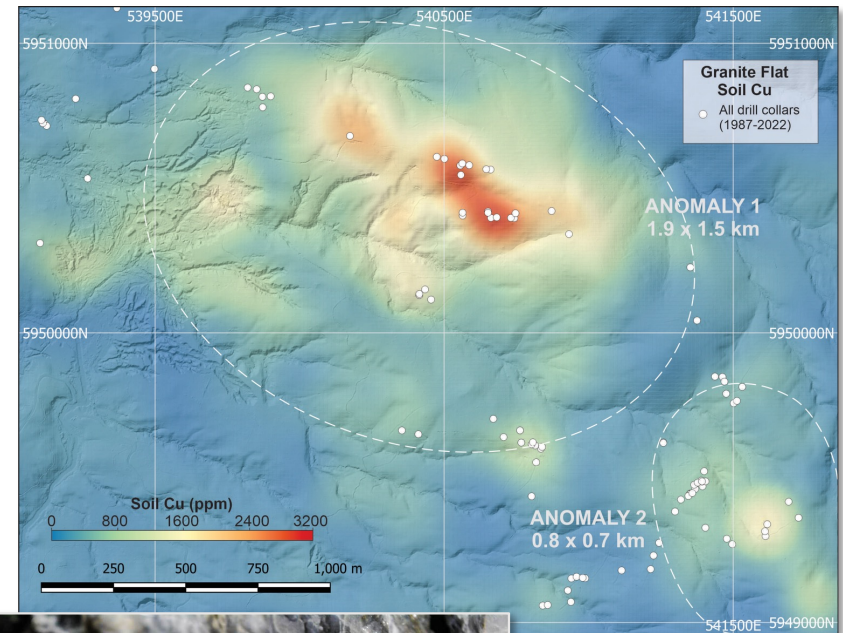
- **Results Highlights**

## Gold

- 19m @ 9.39 g/t Au, including 3m @41.1 g/t from 28m
- 4m @ 3.23 g/t Au, including 1m @ 7.84 g/t from 15m

## Copper

- 19m @0.61% Cu, including 3m @1.52%
- 28m @0.35% Cu, including 9m @.73% from 7m
- 40m @ 0.11% Cu *including* 19m @ 0.18% Cu from 35m
- 138m @ 0.09% Cu from surface (entire hole)
- 111m @ 0.07% Cu from surface



# GRANITE FLAT Cu-Au PROJECT

## Over 109 historic and contemporary drillholes

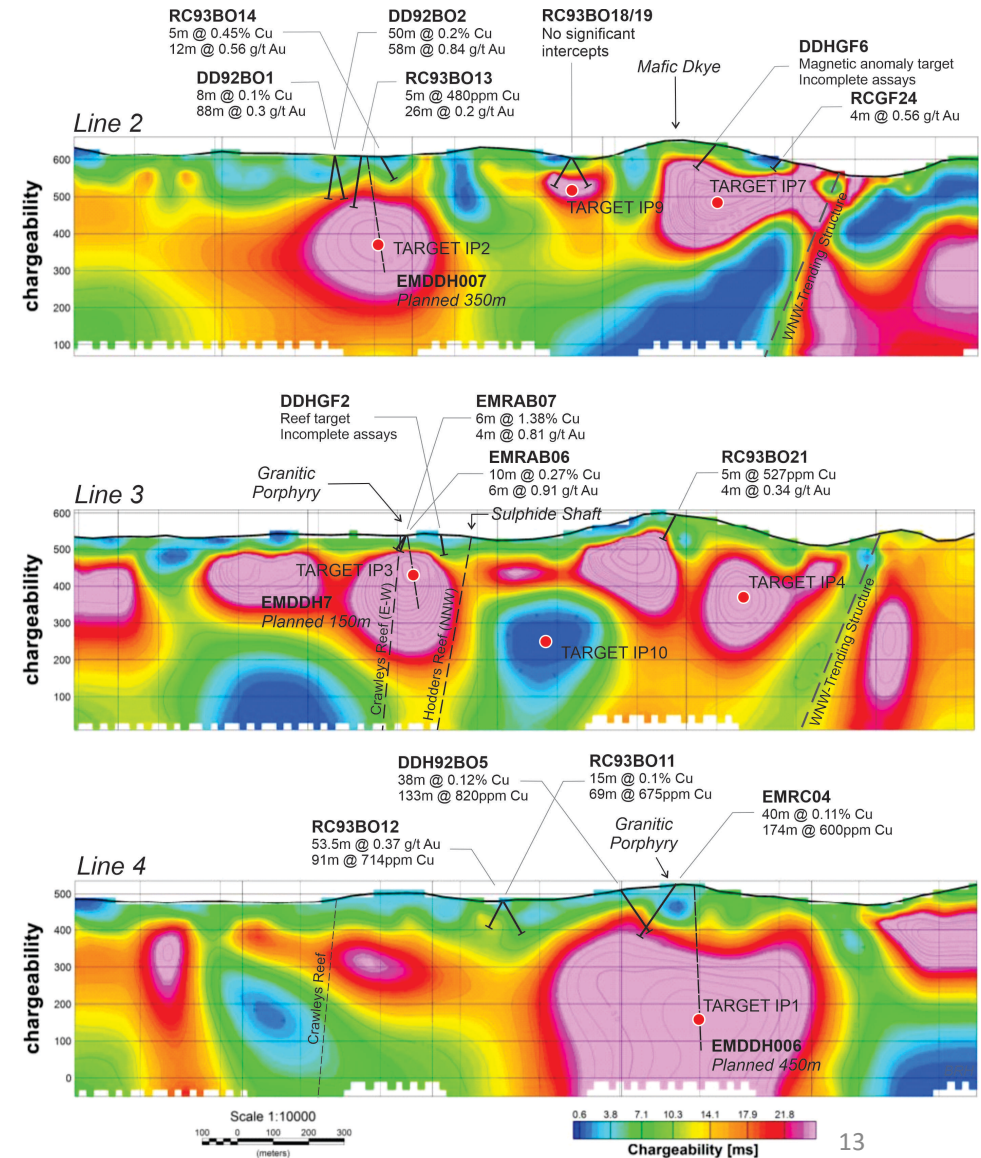
- Dominantly shallow drilling

## Dart completed:

- 1350m RAB drilling in 2020 (42 holes)
- 951m RC drilling in 2021 (6 holes)
- 997m Diamond drilling completed (3 holes; 2022)
- Deepest hole on the project 429m (Feb 2022)
- 16km IP & MT geophysics (6 lines; 2021)

## Recent geophysical survey shows large anomalies at 200-400m below surface

- None of the geophysical anomalies identified have ever been drilled - until now
- First phase drilling of geophysical targets completed
- Further 3040m Diamond drilling planned (10 holes)





# BUCKLAND GOLD PROJECT

## • Location

- Part of 6.9Moz<sup>1</sup> Rutherglen-Beechworth-Harrietville gold district
- Primary + Alluvial production
- Buckland shows extensive shallow primary workings (>100) but low primary production

## • Scale

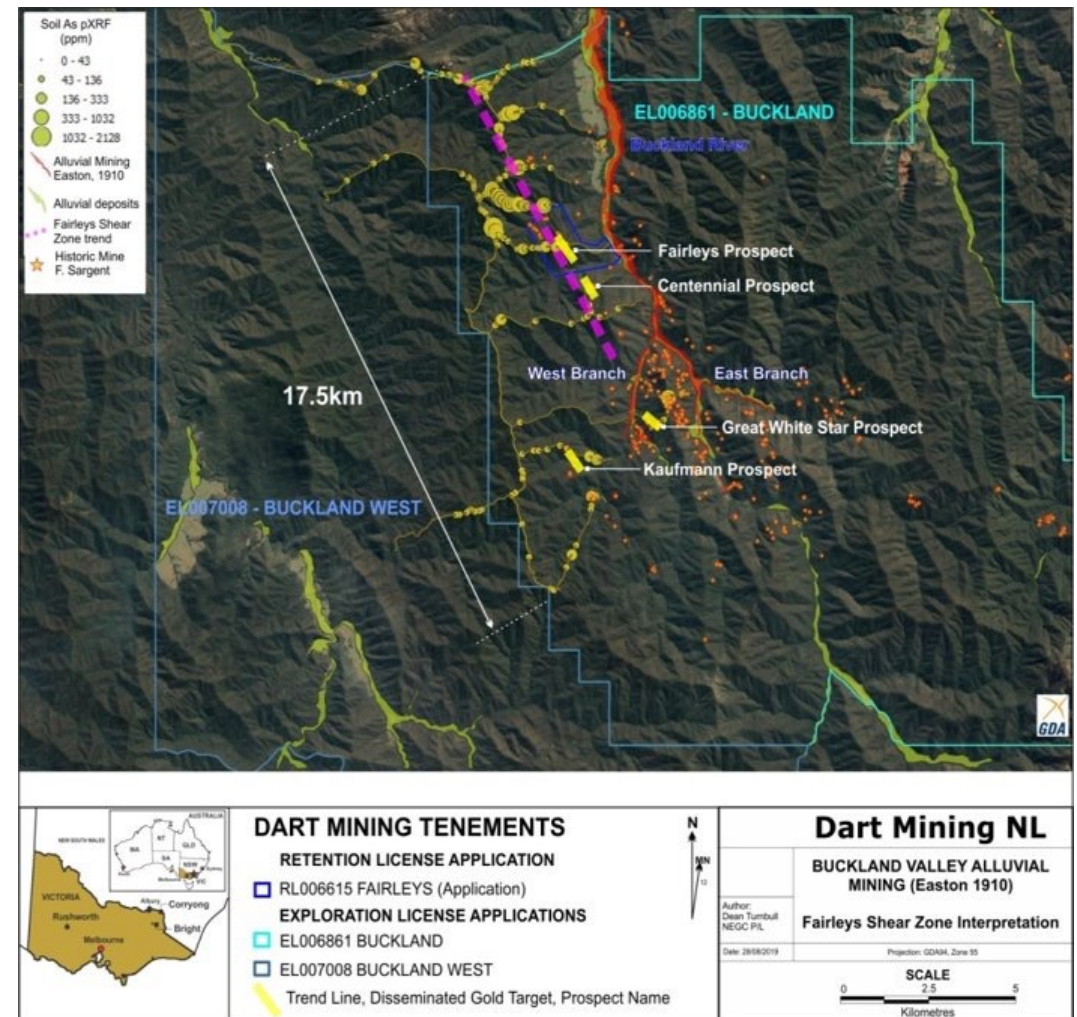
- 17.5km strike identified from ~7,500 surface samples
- Multiple parallel structures identified
- Thick mineralisation intersected >180m below surface
- Mineralisation extends to over 10m width at surface and down hole

## • Style

- Shear hosted, orogenic gold system
- Strong association of gold with arsenic
- Strong similarities with Bendigo and Fosterville style gold mineralisation
- Multiple mineralization styles evident
  - Surface outcropping with vein-hosting high grade gold
  - Broad zones of disseminated sulphide hosted low and mid-grade gold in altered wall rock

## • Results Highlights

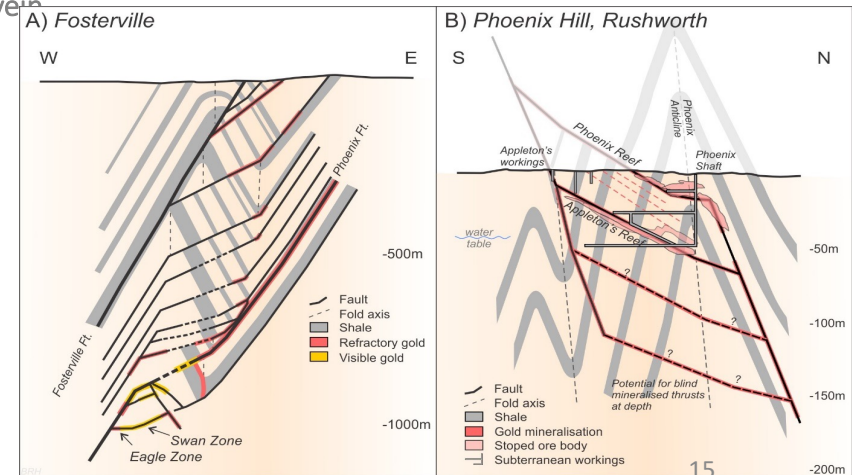
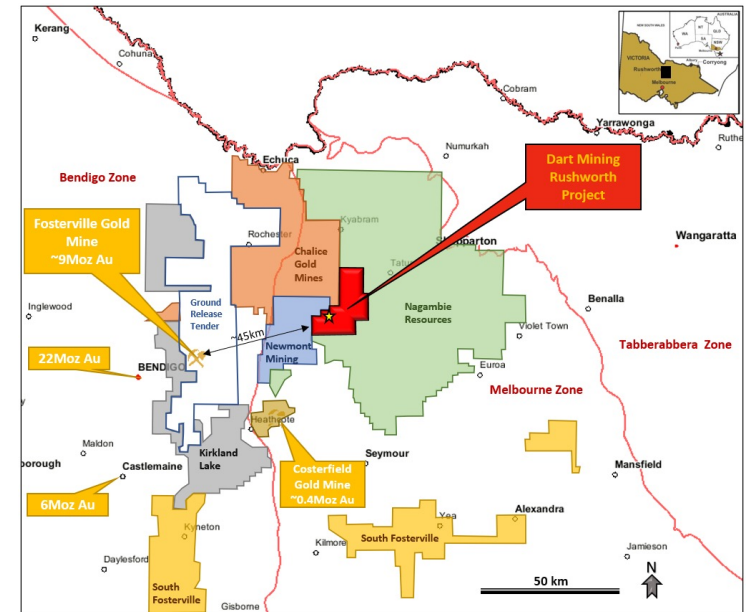
- 13m @ 4.82 g/t Au from 12m incl 2m @ 11.6 g/t Au from 20m
- 11m @ 2.64 g/t Au from 28m incl 3m @ 7.49 g/t Au from 29m
- 10m @ 2.27 g/t Au from 4m incl 2m @ 5.52 g/t Au from 7m
- 2m @ 4.70 g/t Au from 17m and 3m @ 2.62 g/t Au from 26m



1. Historic production figures from: PHILLIPS G.N., 2010. Victorian Gold Province, Australia: A Contemporary Exploration Guide. GeoScience Victoria Special Publication

# Rushworth Gold Project

- The Rushworth Goldfield is located in Central Victoria, 45km northeast of the Fosterville Gold Mine
- Dart's tenure is surrounded by major explorers such as Newmont Mining, Chalice Gold Mines and Nagambie Resources
- Dart owns 100% of licences covering the Rushworth Goldfield
- The mineralisation at Rushworth is orogenic *epizonal* quartz-vein style that is interpreted to be genetically similar to the Fosterville high-grade gold style
  - Multiple structures evident with three primary quartz vein orientations
  - Two main parallel lines of strike, both over 7km long
  - Limited historic mining and drilling have intersected mineralised veins to 200m depth
  - Very high grade-gold historically mined
  - Very few historic mines developed below the water table (~50m depth)
- Dart recently completed a ~1300m RC drill program designed to intersect multiple mineralised vein sets and provide a bulk sample to accurately assess gold content at the prospect.
- Results included:
  - 12m @ 1.26 g/t Au; inc. 2m @ 3.49 g/t in RARC06 from surface
  - 8m @ 1.02 g/t Au; inc. 3m @ 2.26 g/t in RBRC07 from surface
  - 19m @ 1.1 g/t Au; inc. 5m @ 2.3 g/t in RBRC08 from surface
  - 21m @ 0.35 g/t Au in RCRC01 from 6m
  - 3m @ 4.0 g/t Au; inc. 1m @ 10.8 g/t in RCRC08 from 18m
  - 2m @ 4.07 g/t Au; inc. 1m @ 7.1 g/t in RDRC03 from 18m
  - 17m @ 0.54 g/t Au; inc. 3m @ 1.32 g/t in RDRC06 from 13m
  - 1m @ 9.13 g/t Au in RDRC12 from 4m



(ASX Announcement 06 April 2021)



# SCHEDULED WORKS 2022-2023 – 12 Month Exploration Plan

## 2<sup>nd</sup> Half 2022

- **Dorchap Lithium Project**
  - Mapping & sampling
  - LiDAR outcrops ground truthing
  - Walkup roadside drilling (RC and Diamond)
- **Granite Flat Gold-Copper Porphyry**
  - Continuation of diamond drilling (1200m)
- **Buckland Orogenic Gold**
  - Soil sampling across South Buckland
  - Geophysics survey
- **Rushworth Orogenic Gold**
  - Regional mapping & sampling program
  - Soil sampling across structural trends
- **Walwa Pegmatites**
  - Mapping & sampling of pegmatites
  - 3D modelling of historic drill data

## 1<sup>st</sup> Half 2023

- **Dorchap Lithium Project**
  - Off-road drill targets permitting
  - DGPR geophysics
  - Roadside targets infill drilling
- **Granite Flat Cu-Au Porphyry**
  - RC drilling program - 3500m
- **Buckland Orogenic Gold**
  - Low impact deep diamond drilling (Fairley's)
  - RC drilling program (Murrays Creek; Shippen Gully)
- **Rushworth Orogenic Gold**
  - DGPR mapping of structures
  - Reconnaissance drilling program
- **Walwa Pegmatites**
  - Drilling from existing pads
- **Corryong Porphyries**
  - Geophysics program (Stacey's)
  - Drilling (Diamond)

## Contact Details

James Chirnside

Managing Director

[jchirnside@dartmining.com.au](mailto:jchirnside@dartmining.com.au)

+61 419 605 842

Peter Taylor

Investor Relations

[peter@nwrcommunications.com.au](mailto:peter@nwrcommunications.com.au)

+61 412 036 231