

**SOUTHERN CROSS
GOLD**

Leading Australian High-Grade Gold Discovery

ASX Presentation
20 Sept 2022

Important Notice and Disclaimer

Overview

This presentation ("this Presentation") has been prepared by Southern Cross Gold Ltd [ACN 652166795] ("SXG" or the "Company") and is dated 20 September 2022.

Summary information

This Presentation contains summary information about the current and proposed activities of SXG as at the date of this Presentation. The information in this Presentation is of a general nature and does not purport to be complete. This Presentation does not purport to contain all the information that an investor should consider when making an investment decision nor does it contain all the information which would be required in a disclosure document or prospectus prepared in accordance with the requirements of the Corporations Act. It should be read in conjunction with the Company's other periodic and continuous disclosure announcements lodged with the ASX, which are available at the ASX website www.asx.com.au under the code "SXG". Neither SXG nor its directors, employees or advisers accept any responsibility to inform recipients specifically of any matter arising or coming to its attention after the date of this Presentation. Recipients should monitor SXG's announcements to ASX, which can be obtained from ASX website as referred to above.

Investment risk

An investment in SXG's Shares is subject to investment risks and other known and unknown risks, some of which are beyond the control of the Company. SXG, its directors, employees or advisers do not guarantee any particular rate of return or the performance of SXG, nor does it guarantee the repayment of capital or investments from or in SXG or any particular tax treatment.

No Offer

This Presentation is for information purposes only. It is not a prospectus, disclosure document, product disclosure statement or other offering document under Australian law or any other law (and is not approved by or registered with any regulator). The Presentation is not and should not be considered an offer or an invitation to acquire shares or any other securities or financial products.

This Presentation may not be released or distributed in the United States. This Presentation does not constitute an offer to sell, or a solicitation of an offer to buy, securities in the United States or in any other jurisdiction in which such an offer would be illegal. The New Shares have not been, and will not be, registered under the U.S. Securities Act of 1933, as amended (the "U.S. Securities Act") or the securities laws of any state or other jurisdiction of the United States.

The distribution of this Presentation in other jurisdictions outside Australia may also be restricted by law and any such restrictions should be observed. Any failure to comply with such restrictions may constitute a violation of applicable securities laws.

Not financial product advice

This Presentation does not constitute financial product or investment advice (nor tax, accounting or legal advice) nor is it a recommendation to acquire shares and does not and will not form any part of any contract for the acquisition of shares. This Presentation has been prepared without taking into account the objectives, financial situation or needs of any particular investor.

Before making an investment decision, prospective investors should consider the appropriateness of the information having regard to their own objectives, financial situation and needs and seek appropriate advice, including financial, legal and taxation advice appropriate to their jurisdiction. SXG is not licensed to provide financial product advice in respect of SXG shares or any other investment.

Future performance

This Presentation may contain forward looking statements, opinions or estimates. Any forward looking statements, opinions or estimates contained in this Presentation are not guarantees or predictions of future performance and involve known and unknown risks and uncertainties and other factors, many of which are beyond the control of SXG, and may involve significant elements of subjective judgement and assumptions and contingencies as to future events which may or may not be correct which are subject to change without notice, as are statement about market and industry trends, which are based on interpretations of current market conditions. Those statements reflect views only as at the date of this Presentation. The actual results may differ materially from anticipated results, performance of achievement expressed, projected or implied by these forward-looking statements.

While SXG believes the statements in the Presentation are reasonable, neither SXG nor any other person gives any assurance or guarantee that the occurrence of the events expressed or implied in the Presentation will actually occur and investors are cautioned not to place undue reliance on those statements. There can be no assurance that actual outcomes will not differ materially from these forward-looking statements. A number of factors could cause actual results or performance to differ materially from the forward-looking statements, including the risk factors set out in this Presentation. Investors should consider the forward-looking statements contained in this Presentation in light of those disclosures. The forward-looking statements are based on information available to SXG as at the date of this Presentation.

Competent Person Statement

Information in this presentation that relates to new exploration results contained in this report is based on information compiled by Michael Hudson, a Fellow of the Australasian Institute of Mining and Metallurgy. He is MD for Southern Cross Gold Ltd. He has sufficient experience which is relevant to the style of mineralisation and types of deposits under consideration and to the activity being undertaking to qualify as a Competent Person as defined in the 2012 edition of the Australasian Code for Reporting of Exploration Results, Mineral Resources and Ore Reserves (the JORC Code). Michael Hudson has consented to the inclusion in this report of the matters based on this information in the form and context in which it appears. Certain information in this announcement that relates to prior exploration results is extracted from the Independent Geologist's Report dated 16 March 2022 which was issued with the consent of the Competent Person, Mr Terry C. Lees. The report is included the Company's prospectus dated 17 March 2022 which was released as an announcement to ASX on 12 May 2022 and is available at www2.asx.com.au under code "SXG". The Company confirms that it is not aware of any new information or data that materially affects the information related to exploration results included in the original market announcement. The Company confirms that the form and context of the Competent Persons' findings in relation to the report have not been materially modified from the original market announcement.

Advanced gold explorer with projects in Victoria and Queensland

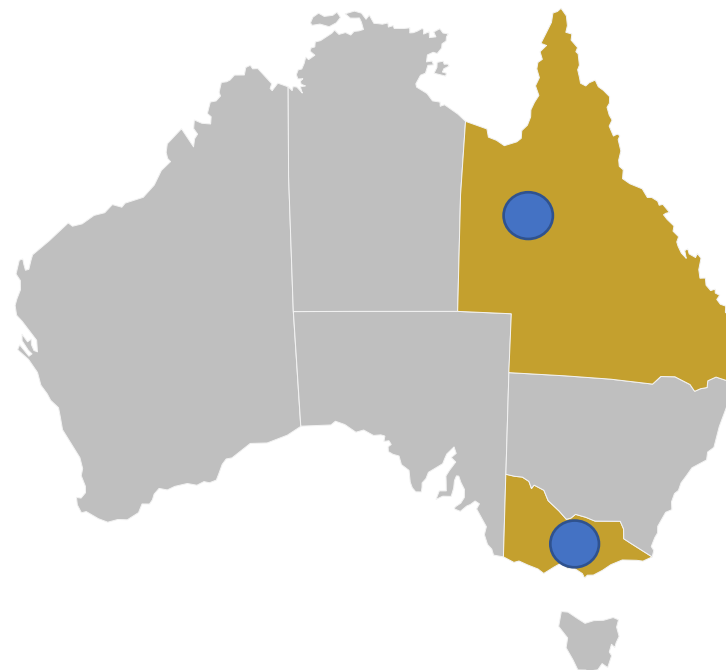
Southern Cross Gold Ltd

Victorian Goldfields Renaissance

Leading Discovery – Gold-Antimony
Multiple High Grade and Wide Intercepts
Controls 3 of the 9 Victorian Epizonal Gold Fields

Mt Isa

Silver, Copper, Gold 785km²
60km strike undercover



Corporate Structure

A Tight Register

Shares on Issue

156,247,750

Securities in escrow[#]

Ordinary Shares	93,985,000
-----------------	------------

ESOP Options	8,970,000
--------------	-----------

JLM Options	6,500,000
-------------	-----------

Free Float

62,262,750

Top 10 Shareholders^{*}

72.27%

Board	Title	Shares
Thomas Eadie	Non-Executive Chairman	550,000 [^]
Michael Hudson	Managing Director	562,500 [^]
Georgina Carnegie	Non-Executive Director	250,000 [^]
David Henstridge	Non-Executive Director	412,500 [^]
Total		1,775,000

Option Class	Number
Class A ESOP Options (\$0.30 exercise price, expire 5 May 2025)	2,990,000
Class B ESOP Options (\$0.30 exercise price, vesting 1 year from listing, expire 5 May 2026)	2,990,000
Class C ESOP Options (\$0.30 exercise price, vesting 2 years from listing, expire 5 May 2027)	2,990,000
Joint Lead Manager Options (\$0.30 exercise price, expire 3 years from listing)	6,500,000 [#]
Total Options	15,470,000

[^] All shares acquired for cash in the Company with 235,000 Shares escrowed for 2 years

[#] 2 Year escrow

^{*} As at 6 September 2022

Largest shareholder Mawson Gold Ltd (TSX: MAW) – 60%



Southern Cross Gold Ltd

Projects

- **3 of 9 epizonal** historic Victorian gold fields
 - Best recent grassroots Victorian gold discovery
 - Two projects with drill discoveries
- **Sunday Creek (100%)**
 - Unprecedented widths at high-grades
 - Continually delivering
 - 16 x >100 g/t AuEq x m intersections
 - 119.2 m @ 3.9 g/t AuEq¹ including:
 - 64.0 m @ 3.0 g/t AuEq and 39.0 m @ 6.8 g/t AuEq
 - 132.6 hectares of freehold land
 - Drilled along 1 km of strike, 400 m vertical depth
 - Multiple shoots already discovered – small % drilled
 - 10 km strike extensions undrilled
 - Drilling towards maiden resource
- **Whroo** (earning 70% JV)
 - 14 km mineralised trend
 - 1st hole - 0.6m @ 49.7 g/t Au³, 'Costerfield-like'
- **Redcastle** (70% JV)
 - 17 km untested gold veins
- **Mt Isa** (100%)

Team and Investments

- **Experienced local board & management**
 - Team of ore discoverers who execute
 - Fully permitted to drill on all projects
- **10% holding** of Nagambie Resources Ltd
- **With a 3,300km² RoFR** over Nagambie's tenements

Location – World Class

- **Strategic: abutting Fosterville and Costerfield**

Financially Secure

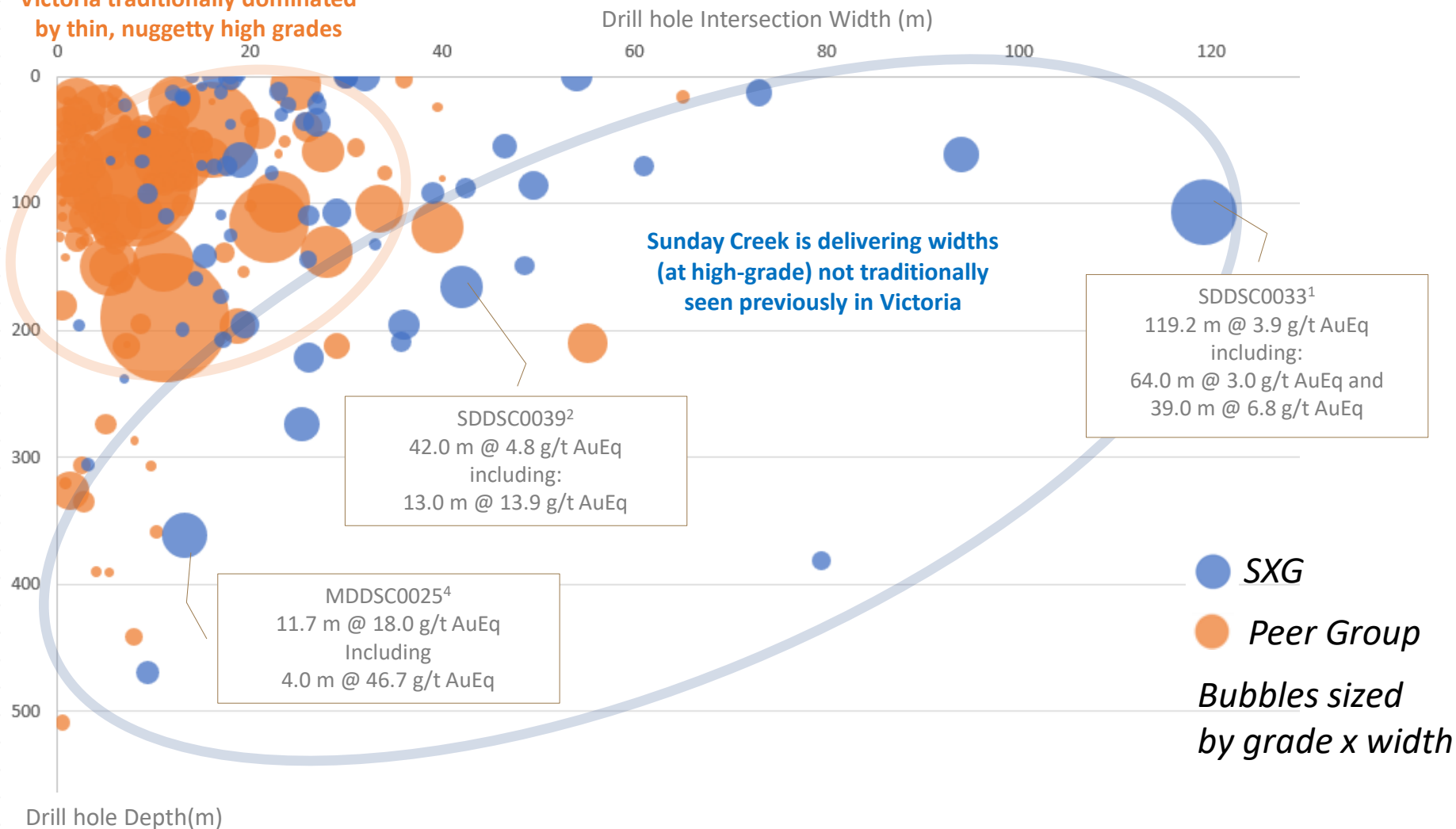
- **Funding for two years of drilling**
- **Tight capital structure (60% escrow)**



Unprecedented Victorian Discovery

Sunday Creek is delivering widths (at high-grade) not seen previously in Victoria

**Victoria traditionally dominated
by thin, nuggetty high grades**



Depth (m)
6

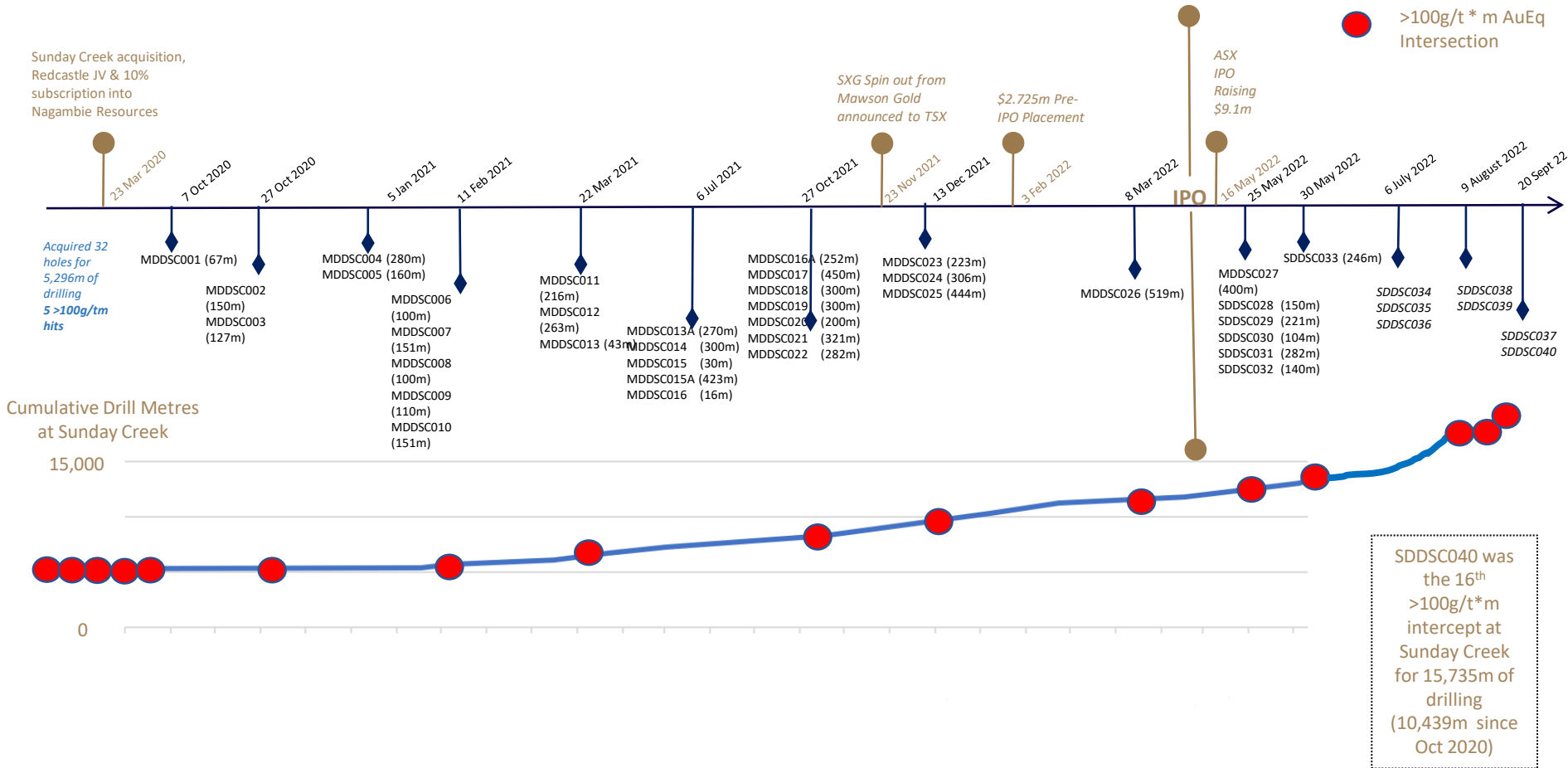
Victoria gold exploration company announcements released between January 2015 and 24 May 2022 incorporating 140 drill hole intersections. SXG Sunday Creek results AuEQ @ 3m @ 0.1g/t AuEQ lower cut. Current mines excluded.

opaxe



Sunday Creek is not a one-hole success story

Oct '20 to Sept '22 > 13.5km drilled – delivered ● 16 >100 AuEq g/t x m holes



Directors



Tom Eadie | Non- Executive Chairman

- Explorer, mining executive and company director with many significant mineral discoveries and several successful companies to his name (Pasminco, Syrah, Copper Strike).
- Geologist with over 40 years' experience in the resources industry.



Michael Hudson | Managing Director

- Explorationist and entrepreneur, developed and financed mineral exploration properties globally over 30 years (raising +\$200m). Key member behind multiple discoveries.
- Founder and director of Mawson Gold Ltd (TSX:MAW) and Hannan Metals Ltd (TSXV:HAN)



Georgina Carnegie | Non-Executive Director

- Experienced executive within Australian government and global corporate sectors
- Advisory roles in public and private mining and insurance sectors, OECD, Asian business councils and Australian university sector.



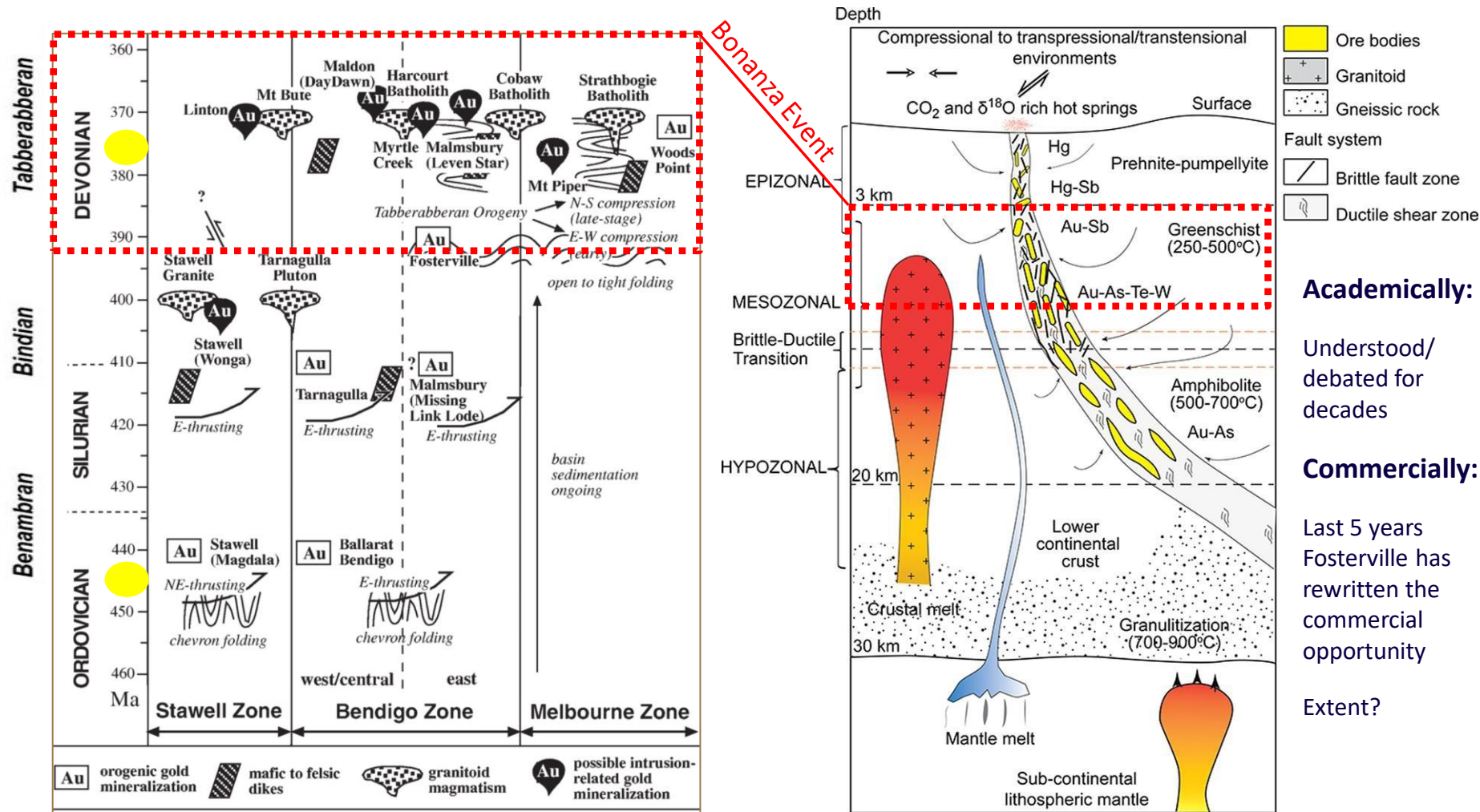
David Henstridge | Non-Executive Director

- Geologist with over 50 years' experience in the mining industry including 20 years in managing public-listed companies.
- Associated with many mineral discoveries worldwide including in Australia, Peru & Finland.

Tabberabberan Orogeny

Epizonal gold window

Two orogenic events separated by 70ma



Modified from: pubs.geoscienceworld.org/segweb/economicgeology/article/100/2/385/151101/POSSIBLE-INTRUSION-RELATED-GOLD-SYSTEMS-IN-THE

Sourced from: ars.els-cdn.com/content/image/1-s2.0-S0169136821006120-ga1_lrg.jpg

Victoria ranks on a global basis

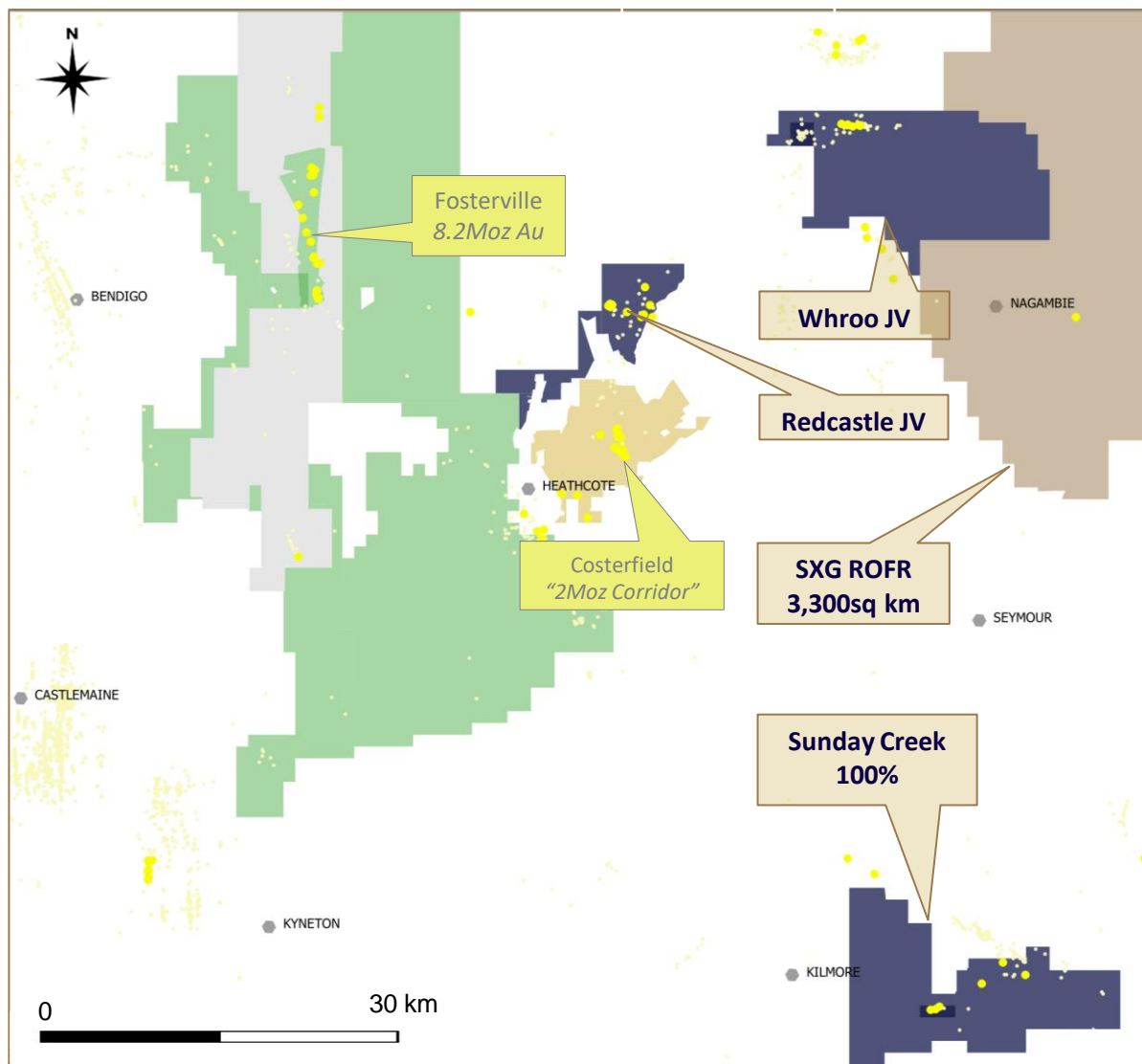
HIGHEST-GRADE GOLD MINES 2021				
MINE		OWNER	Q1 2021 Au milled grade, g/t	
1	Fosterville	Australia	Agnico Eagle	19.8
2	Macassa	Canada	Agnico Eagle	19.8
3	Island Gold	Canada	Alamos Gold	13.0
4	Segovia Operations	Columbia	Gran Columbia	12.8
5	Eagle River	Canada	Wesdome	12.8
6	Fruta del Norte	Ecuador	Lundin Gold	11.4
7	Costerfield/ Augusta*	Australia	Mandalay	11.0
8	Hope Bay	Canada	TMAC	10.8
9	Bambanani	South Africa	Harmony Gold	8.8
10	Cerro Negro	Argentina	Newmont	8.5



TOP GOLD PRODUCERS 2020						
MINE	LOCATION	OPERATING OWNER	TYPE	2020 PROD (KOZ)	2020 COSTS (USD/OZ)	
1	Olympia	Russia	Polyus	Open-Pit	1,200	532
2	Pueblo Viejo	Dominican Rep	Barrick Gold	Open-Pit	899	661
3	Grasberg	Indonesia	Freeport-McMoRan	U/G	848	1,279
4	Cadia Valley	Australia	Newcrest	U/G	822	104
5	Kibali	DRC	Barrick Gold	Open+ UG	807	778
6	Cortez	USA	Barrick Gold	Open+ UG	798	1,000
7	Lihir	PNG	Newcrest	Open-Pit	772	1,308
8	Loulo Gounkoto	Mali	Barrick Gold	Open+ UG	680	1,001
9	Boddington	Australia	Newmont	Open-Pit	670	1,091
10	Fosterville	Australia	Agnico Eagle	U/G	640	313

Southern Cross Gold Ltd

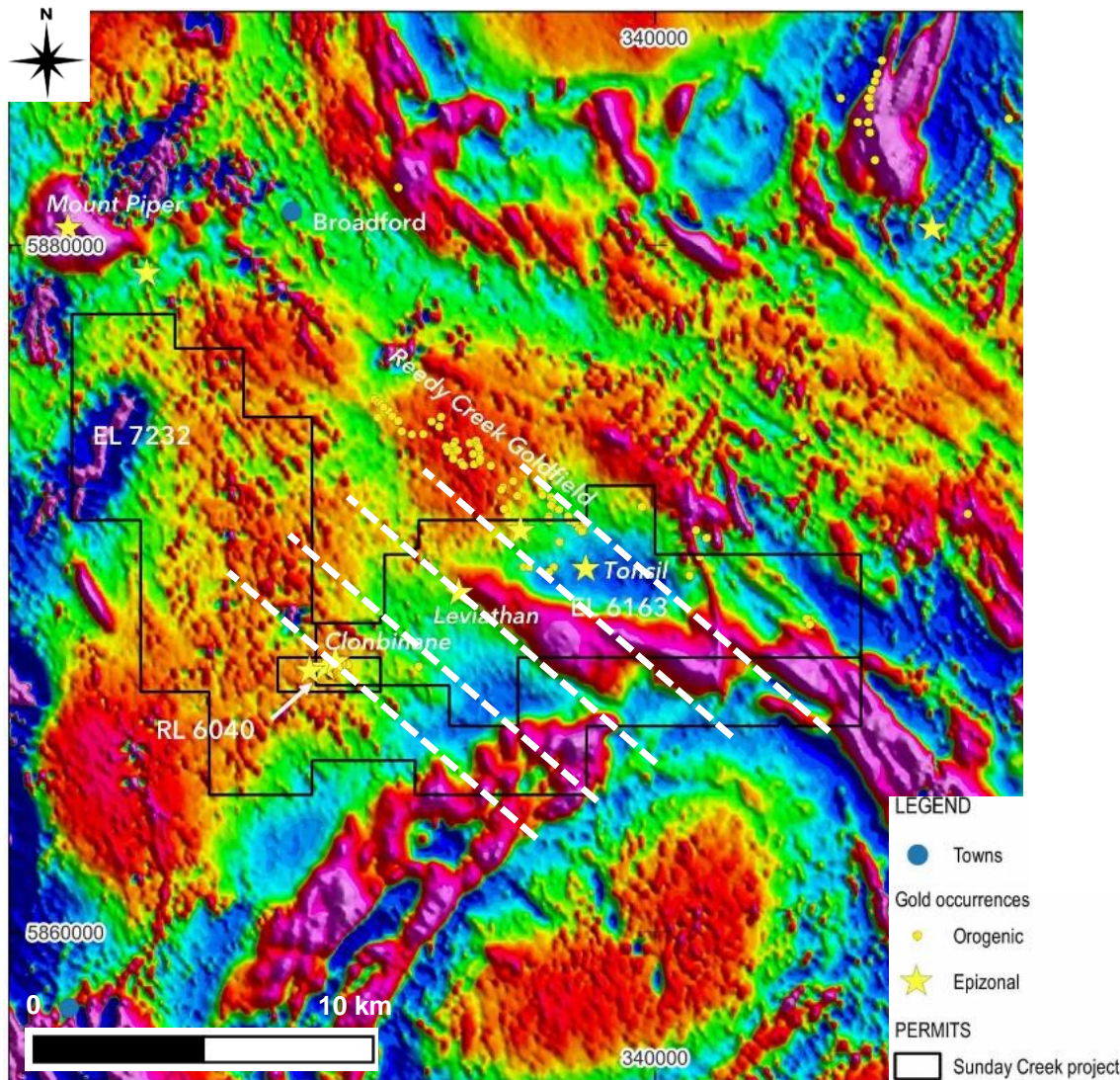
Controls 3 of the 9 epizonal fields in Victoria



-  Epizonal Gold Deposits
-  SXG Projects
-  SXG Nagambie Right of First Refusal
-  Agnico Eagle Mines (Fosterville)
-  Mandalay Resources (Costerfield)
-  S2 Resources

Aeromagnetic image (RTP)

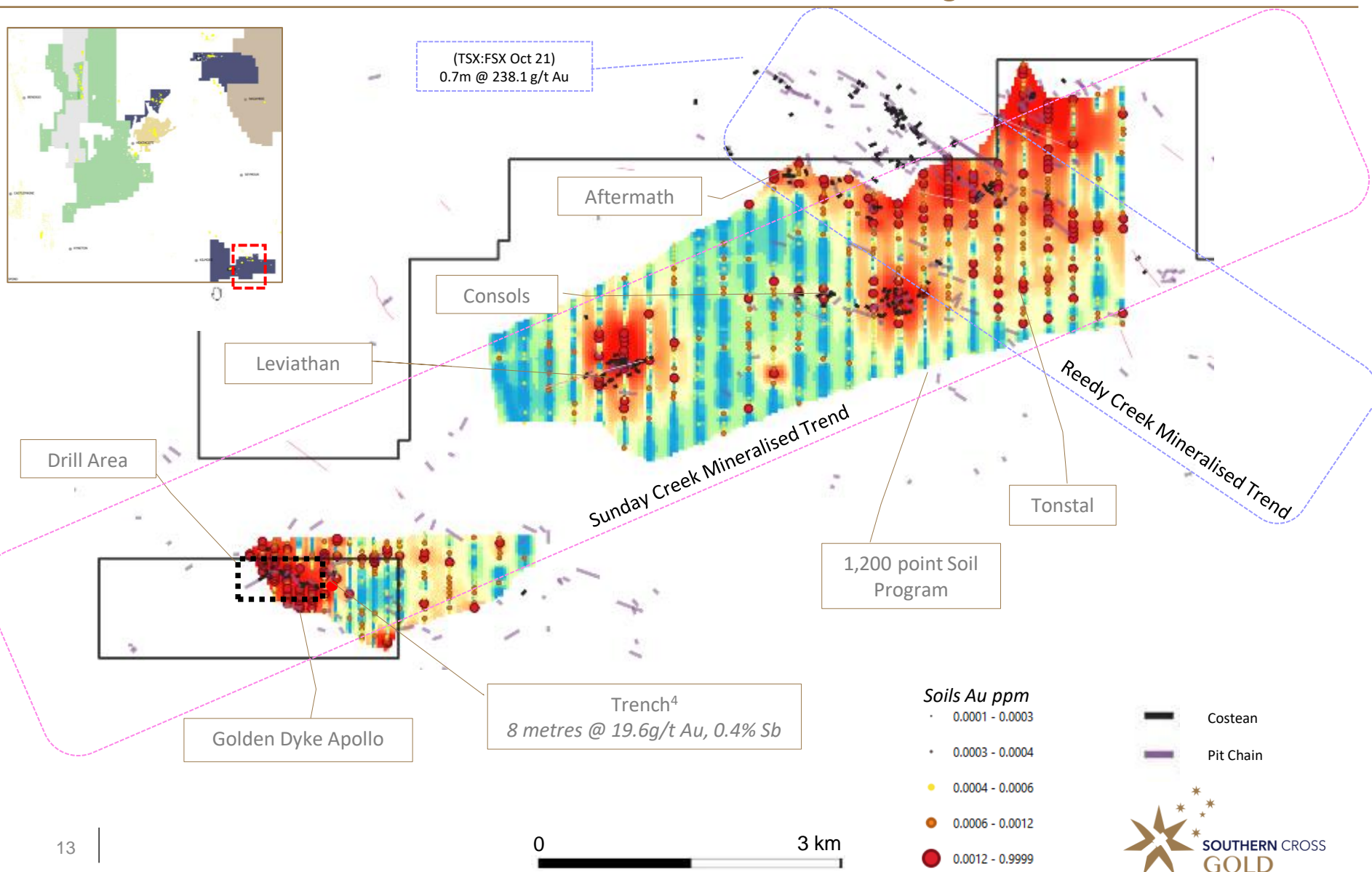
Sunday Creek



- Dominated by north-westerly striking open to tightly folded Silurian to early Devonian low-grade turbiditic metasediments (Humevale Siltstone and Melbourne Formation).
- Metamorphism coincident with the deformation during the Tabberabberan Orogeny in the Late Devonian produced lower greenschist facies assemblages, somewhat complicated by the thermal aureole of the multi-event emplaced I-type Mt Disappointment Granodiorite
- NW Faults

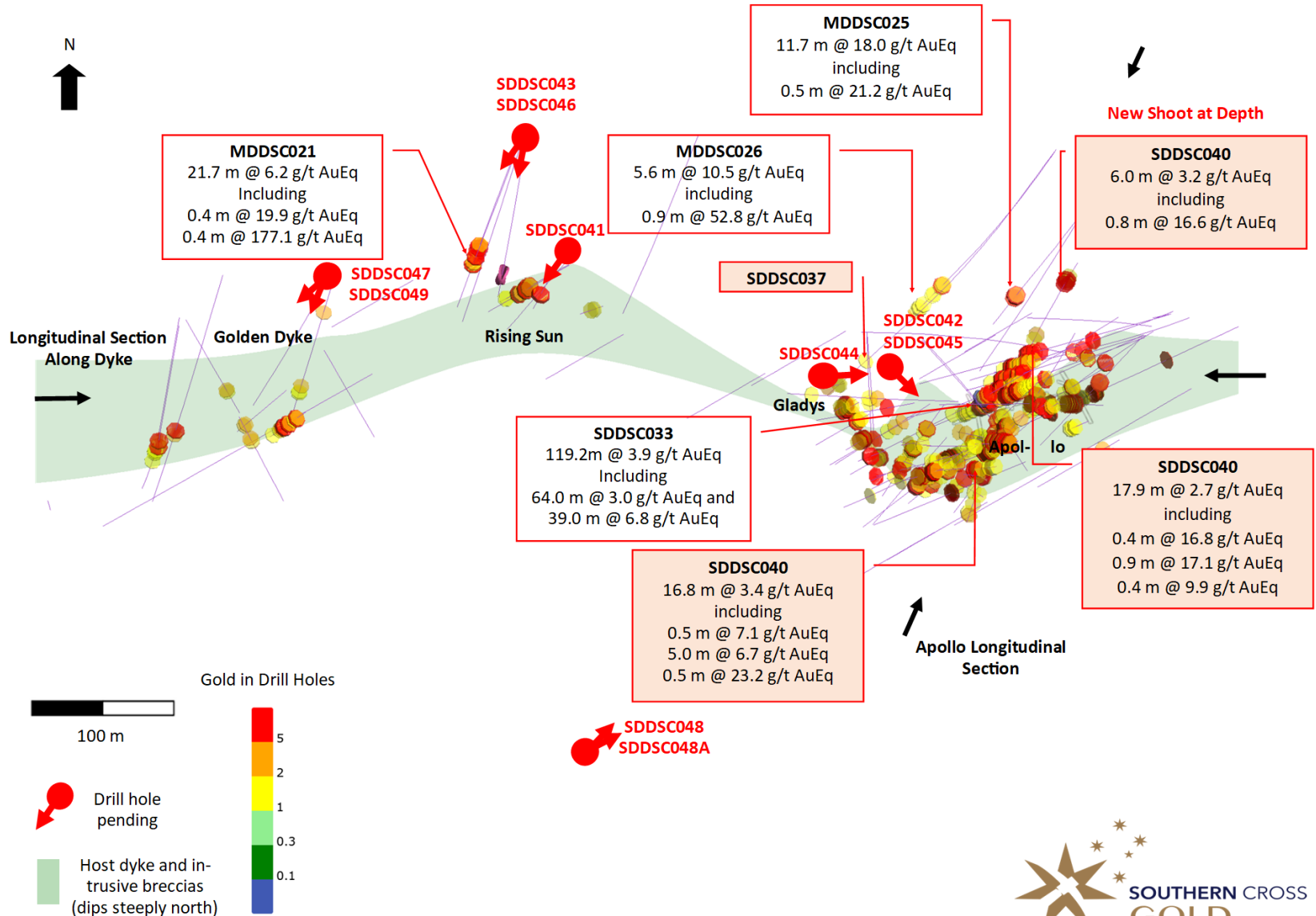
Sunday Creek

11km Strike Extension undrilled extensions & historic mining



Sunday Creek

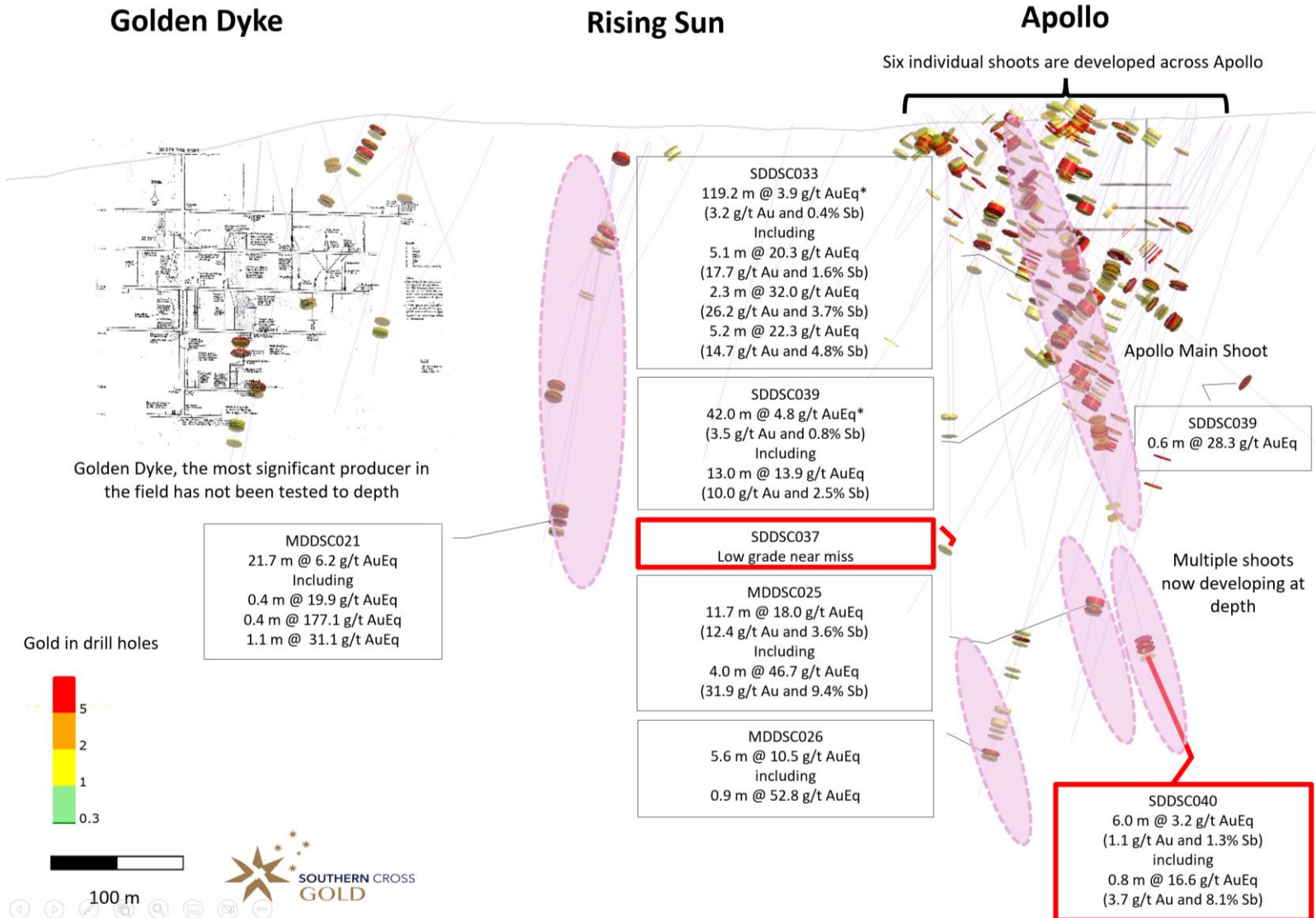
Plan – Multiple shoots drilled



Sources: See final page: 1, 2, 4

Sunday Creek

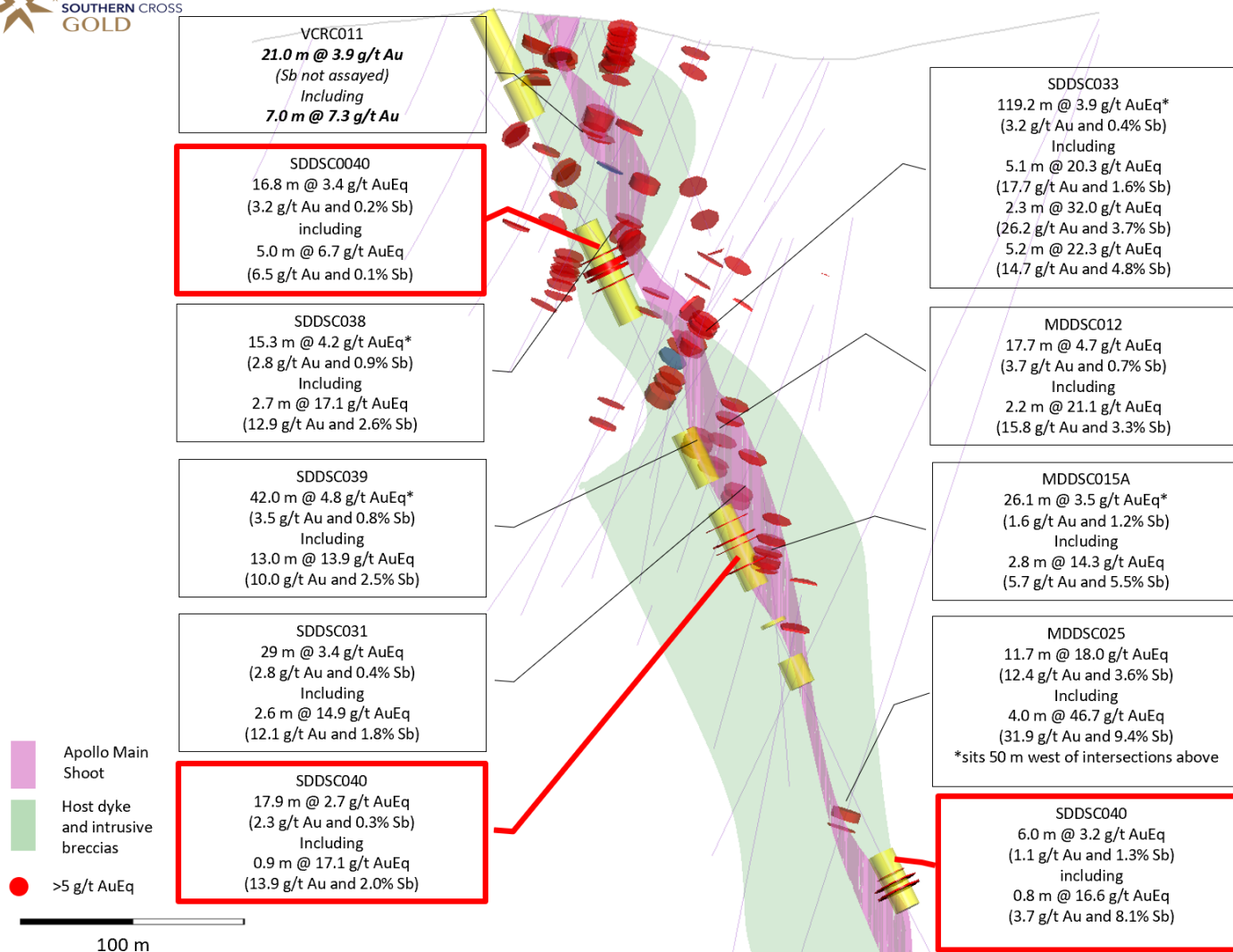
Longitudinal section looking towards 000 in plane of dyke



Sources: See final page: 1, 2, 4

Sunday Creek

Longitudinal section looking towards 320 in plane of shoot



Sunday Creek

Width and grade in a high-grade neighbourhood

Drilling is proving

- Extraordinary wide drill widths (ie 10m-120m @ 2-16g/t Au) in zones that the old timers ignored; and
- High grade hits that they mined and missed going to depth (ie 0.3m-5m @ 13-150g/t Au)

Width

Drill Hole	From (m)	To (m)	Width (m)	Au g/t	Sb %	AuEq g/t
SDDSC033	106.8	226.0	119.2	3.2	0.4	3.9
SDDSC039	166.0	208.0	42.0	3.5	0.8	4.8
MDDSC025	361.3	374.5	13.2	11.0	3.2	16.0
VCRC007	62.0	156.0	94.0	1.3	0.1	1.5
MDDSC021	273.9	299.2	25.4	4.0	0.8	5.3
VCRC022	66.0	85.0	19.0	6.5	0.3	6.9
SDDSC031	195.7	231.7	36.0	2.3	0.3	2.9
CRC020	0.0	54.0	54.0	1.5	0.3	1.9
CRC013	0.0	32.0	32.0	3.0	0.1	3.1
MDDSC015A	221.4	247.5	26.1	1.6	1.2	3.5
MDDSC005	86.0	135.5	49.5	1.2	0.4	1.9

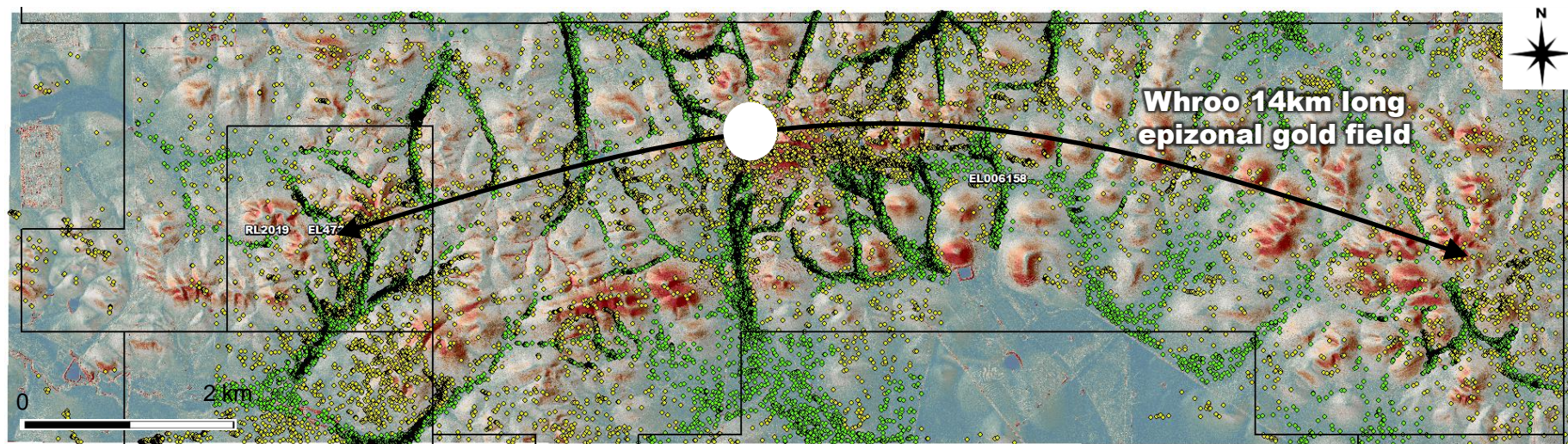
.....and.....

Grade

Drill Hole	From (m)	To (m)	Width (m)	Au g/t	Sb %	AuEq g/t
MDDSC025	363.0	367.0	4.0	31.9	9.4	46.7
SDDSC039	194.0	207.0	13.0	10.0	2.5	13.9
SDDSC033	189.9	195.1	5.2	14.7	4.8	22.3
SDDSC033	160.5	165.6	5.1	17.7	1.6	20.3
VCRC022	70.0	72.0	2.0	42.5	1.0	44.1
MDDSC021	277.0	277.4	0.4	145.5	20.0	177.1
SDDSC033	184.0	186.3	2.3	26.2	3.7	32.0
VCRC007	67.0	72.0	5.0	12.6	0.8	13.9
CRC020	32.0	35.0	3.0	16.2	1.1	17.9
CRC013	15.0	17.0	2.0	25.8	0.2	26.1
CRC026	12.0	16.0	4.0	12.4	0.3	12.9

Whroo JV

Second bona fide high-grade discovery



Best drill result on the field in 167-year history

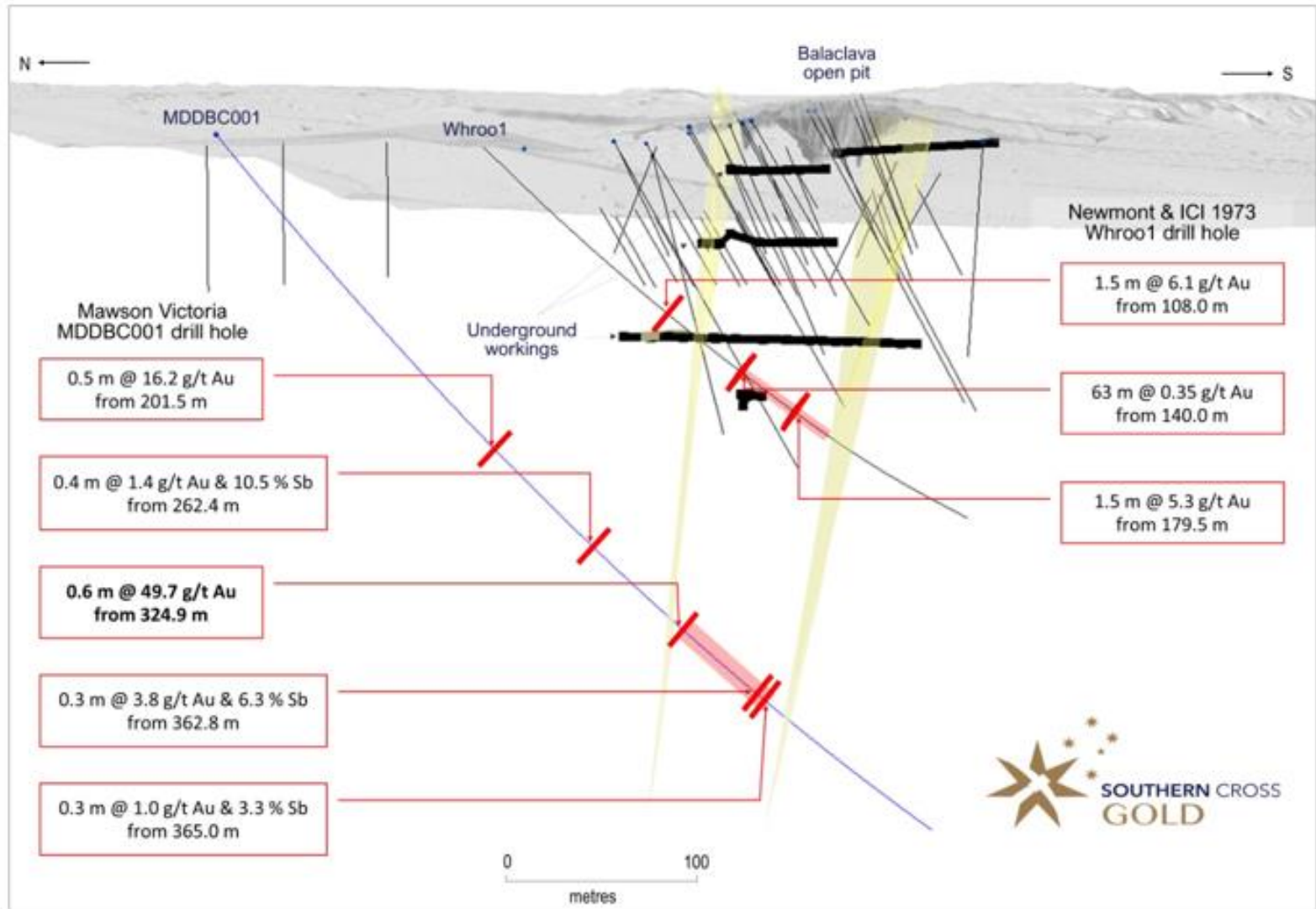
- Hit high-grade gold and antimony at depth under prolific historic Balaclava open pit mine in first drill hole MDDBC001
 - 0.5 metres @ 16.5 g/t Au from 201.5 metres
 - 0.4 metres @ 1.4 g/t Au and 10.5% Sb from 262.4 metres
 - **0.6 metres @ 49.7 g/t Au from 324.9 metres**
 - 0.2 metres @ 0.2 g/t Au and 16.5% Sb from 359.6 metres
 - 0.2 metres @ 3.8 g/t Au and 6.3% Sb from 362.8 metres
 - 0.3 metres @ 1.0 g/t Au and 3.3% Sb from 365.0 metres

Whroo Workings

- ◆ Alluvial Au
- ◆ Hard Rock Au

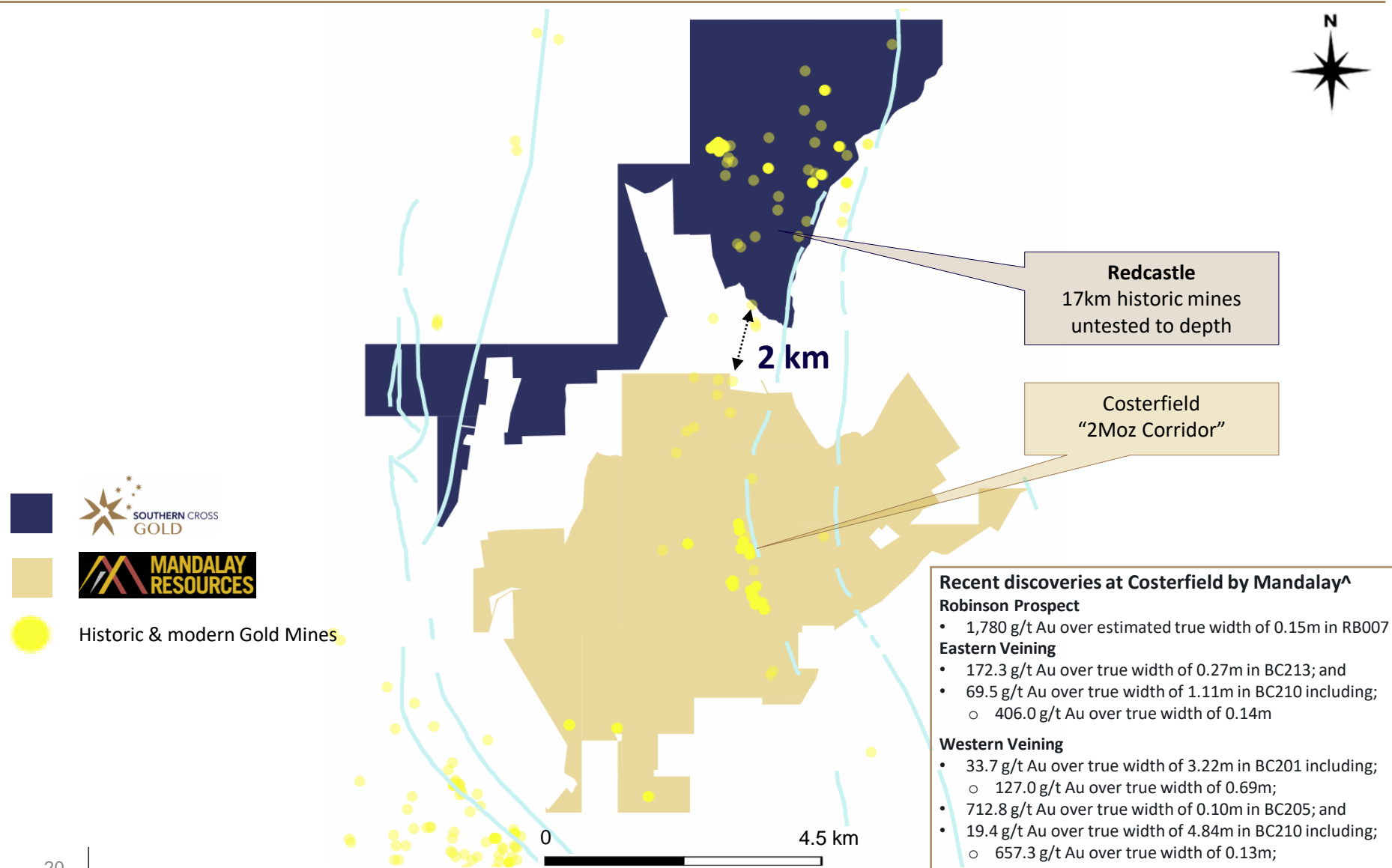
Whroo JV

MDDBC001 Drill Results Balaclava open pit



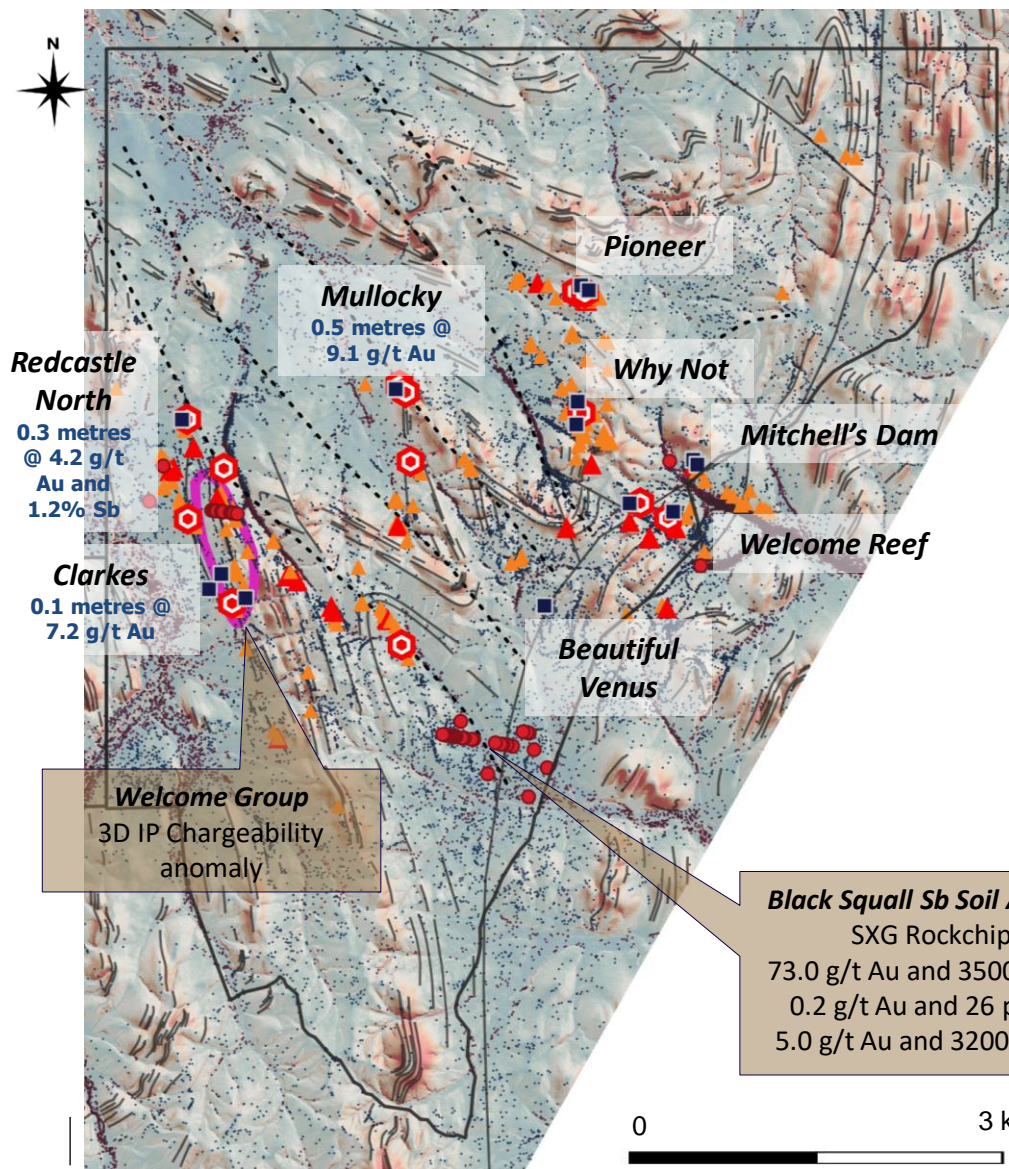
Redcastle JV

Mine Lease Extensions of Costerfield



Redcastle JV

Prospects and SXG Significant Drilling



- Mawson Victoria drilled prospect
- Drillhole Au > 5 g/t Au (historic)
- Rockchip 5-63 g/t Au (historic)
- Rockchip 1-5 g/t Au (historic)
- Soil Sample 120-280 ppm Sb (historic)
- 3D IP Anomaly

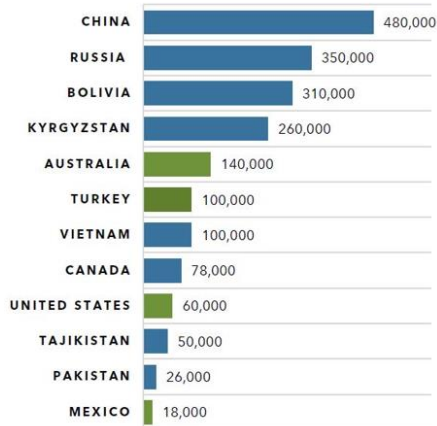
LiDAR Background: Light Detection and Ranging with geological interpretation line work. Machine learning defined:

- Alluvial gold showing
- Hard rock gold showing

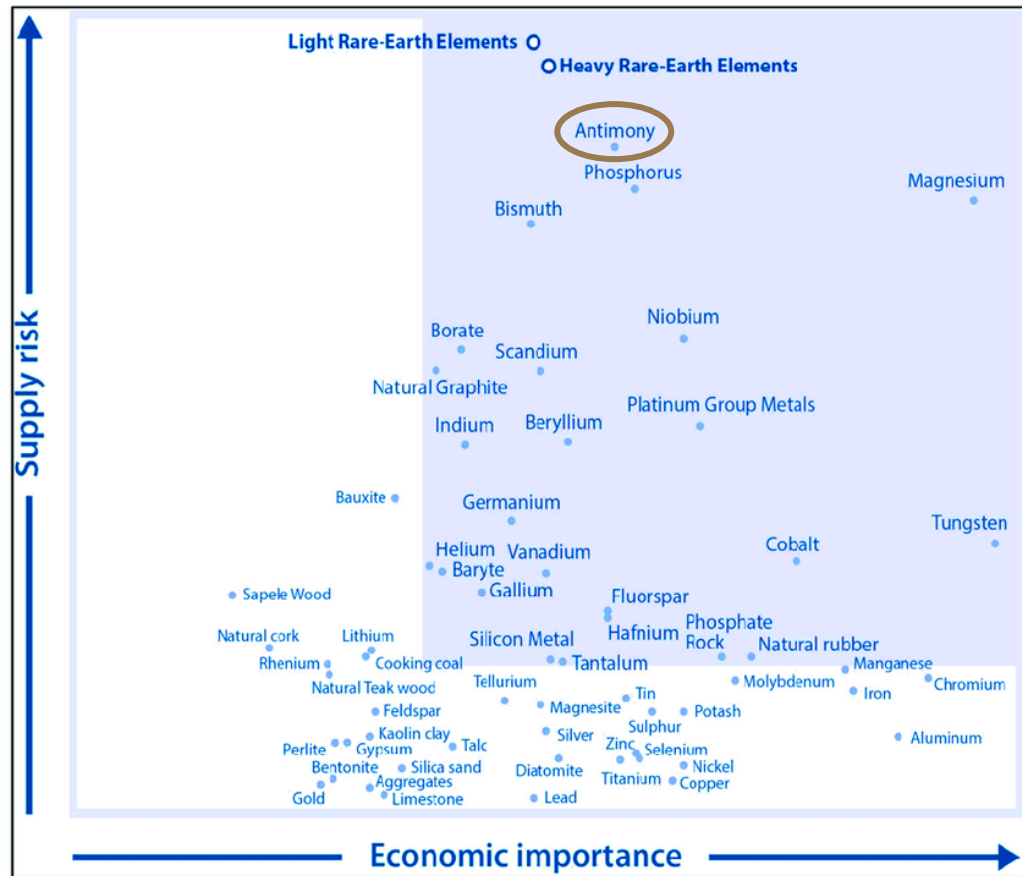
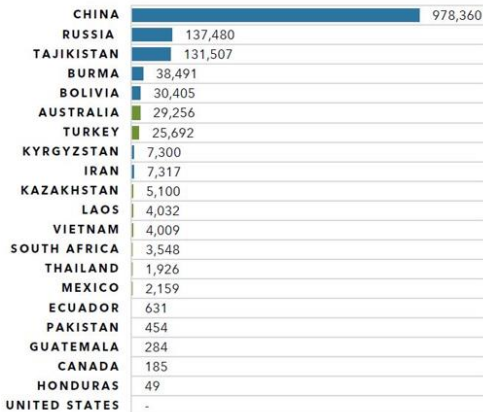
Antimony

A Critical Metal

REPORTED 2020 WORLD RESERVES ANTIMONY (METRIC TONNES)



CUMMULATIVE WORLD PRODUCTION ANTIMONY (2013-2020) METRIC TONNES



- Neighbouring Costerfield is 5th largest global antimony producer
- Accounts for all of Australia's production
- Historic Sunday Creek antimony production processed at Costerfield during WW1

Nagambie Resources Ltd (ASX:NAG)

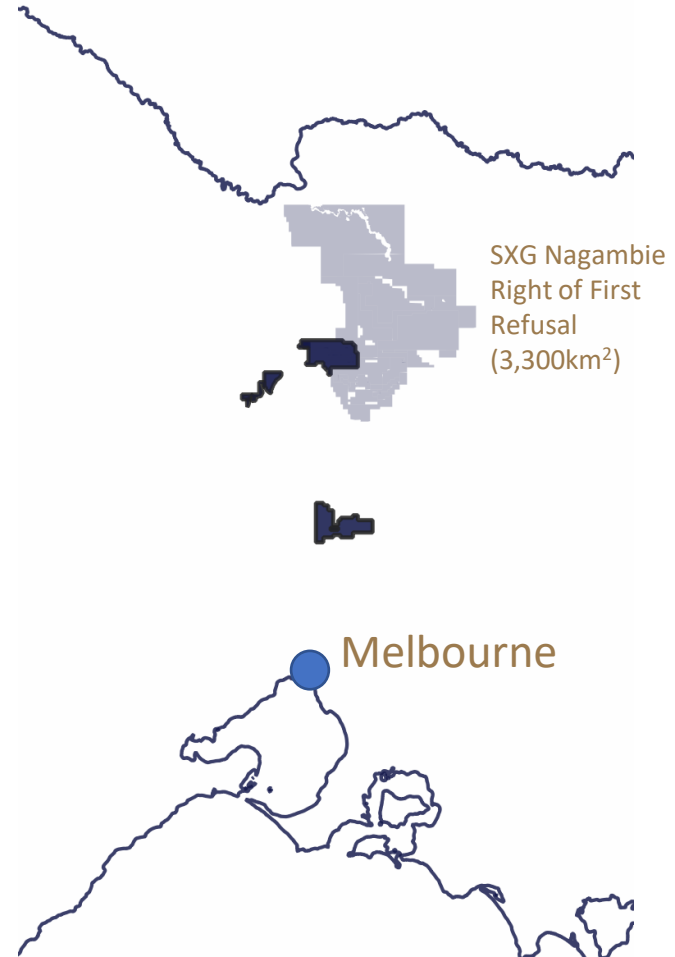
Strategic 10% Investment

Southern Cross Gold holds strategic 10% of ASX-listed Nagambie Resources (ASX:NAG)

- Now constructing a CIL 180,000 tpa gold processing plant
- Potential access for toll treatment – game changer for central Victoria and future requirement (tailings)



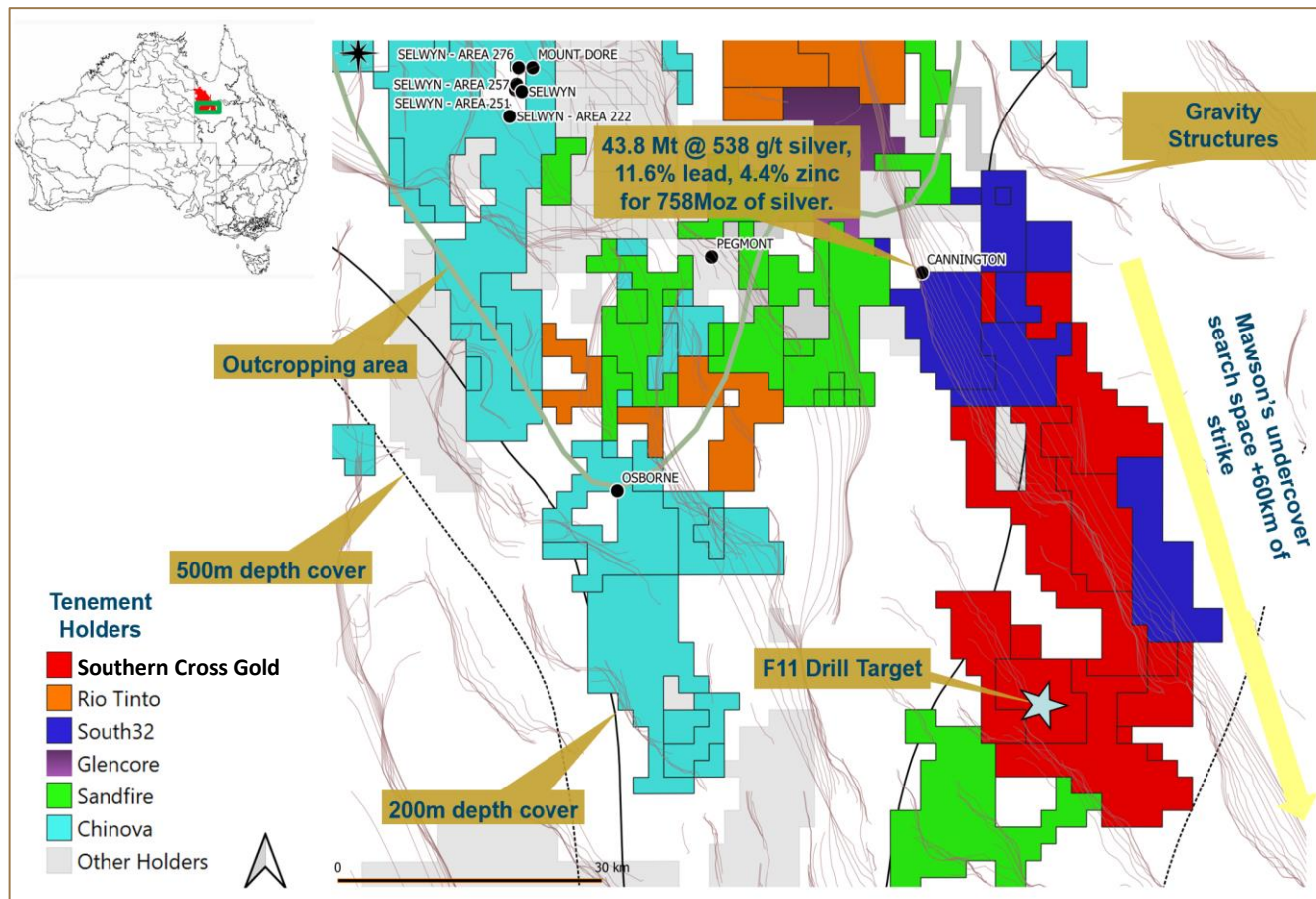
- Provides the Right of First Refusal (RoFR) to take up or match any proposals over a large 3,300km² tenement package held by Nagambie
 - Deal flow – potential pipeline of new projects
- SXG freehold purchase at Sunday Creek (300 acres) – securing future access early



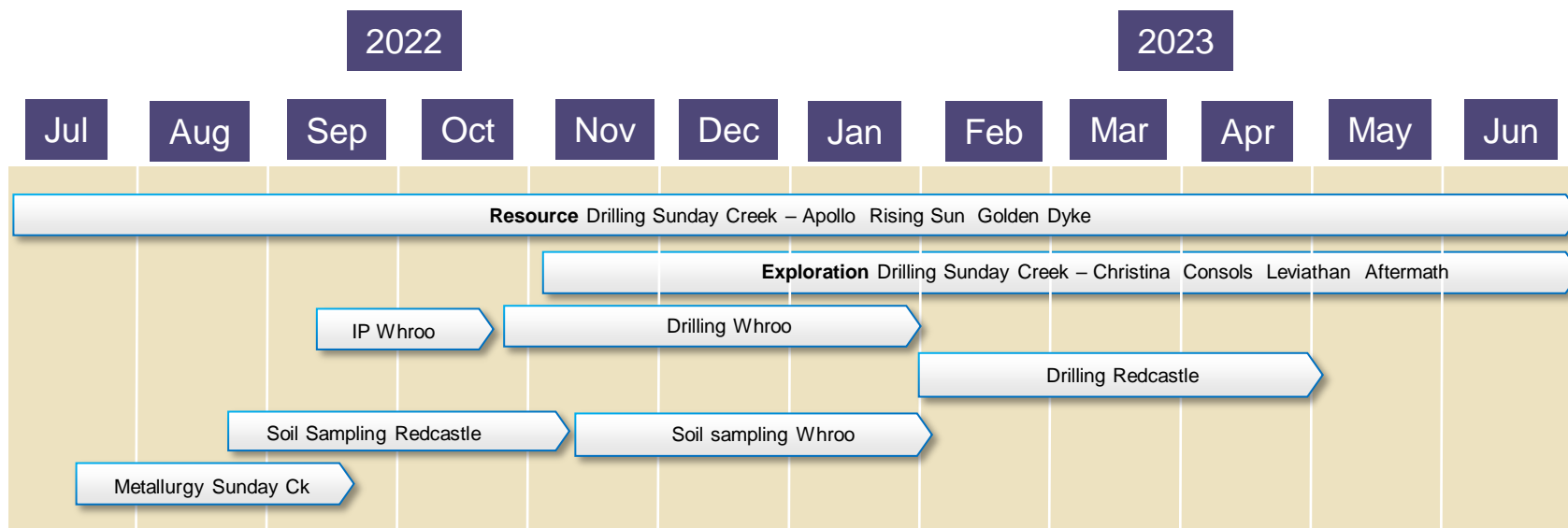
Mt Isa

785km² holding

- 785km² tenure in the Cloncurry district of the Mount Isa block, over a combined 60 km of strike
- One drill hole completed, funded by Queensland government
- Top 10 targets ranked and drill ready



Aggressive exploration program



Fully Funded through to 2024

- Geological discovery team in place since 2020
- Fully permitted
- Drill focus, looking to expand and move to resource at Sunday Creek
- Providing pipeline of continual results to the market
- Continuing to deliver with 2 rigs drilling 7 days a week: 7 drillholes pending assays as of 20 September, 2022.

Our People

- Locally based staff – living in the communities in which we work
- Australian based board – focused on creating an ethical, shared value company with strong ESG credentials that employees and investors can be proud of



From our Welcome to Country Smoking Ceremony day with elders Aunty Joan and Uncle Mick from the traditional owners – Taungurung Land & Waters Council

- Southern Cross Gold is a member of the [Minerals Council of Australia](#) (“MCA”) and abides by its policies, including its [Water Policy](#) and [Towards Sustainable Mining](#)® (TSM)
- Southern Cross Gold abides by and attempts to exceed the [Victoria Code of Practice for Mineral Exploration](#) to ensure an economically viable exploration mining industry which makes the best use of mineral resources in a way that is compatible with the economic, social and environmental objectives of the State of Victoria
- Southern Cross Gold has a dedicated [Indigenous People’s Policy](#) and actively engages with the [Taungurung Land & Waters Council](#).
- Southern Cross Gold supports the [Whroo Goldfields Conservation Management Network](#) in the protection and monitoring of the phascogale network.
- We are committed to earning the trust of landowners and other community stakeholders
- We strive to conduct all exploration activities by meeting and exceeding regulatory requirements and community expectations
- Lisa Gibbons (GM) is co-winner of the 2022 Exceptional Woman in Mining in Victorian Mining



Southern Cross Gold

A compelling gold opportunity

- A renaissance for Victorian gold exploration
 - Unprecedented Victorian drill results
- High quality assets – 3 of the 9 epizonal gold/antimony fields in Victoria
- Proximal to two global Top 10 high-grade gold operations
- Significant exploration already undertaken
 - Two bona fide drill discoveries
- Strategic 10% position in Nagambie offers further opportunity, also through RoFR
- Strong pipeline of drilling and assay results
- An exploration leader



Contact us

Company Secretary

Justin Mouchacca
JM Corporate Services
Level 21
459 Collins St
Melbourne Vic 3000

Registered Office

Level 21
459 Collins St
Melbourne Vic 3000

Email:

info@southerncrossgold.com.au

Website:

www.southerncrossgold.com.au

Legal Advisors

QR Lawyers
Level 6
400 Collins St
Melbourne Vic 3000

Tax Advisor

AFS Partners
61 Bull St
Bendigo Vic 3550

Auditor

William Buck Audit (Vic)
Level 20
181 Williams St
Melbourne Vic 3000

Share Registry

Computershare Investor Services
Level 43
60 Carrington St
Sydney NSW 2000

^Sources for Slides 10 & 20

SXG Results

1. <https://wcsecure.weblink.com.au/pdf/SXG/02526261.pdf>
2. <https://wcsecure.weblink.com.au/pdf/SXG/02539138.pdf>
3. <https://wcsecure.weblink.com.au/pdf/SXG/02570073.pdf>
4. https://uploads-ssl.webflow.com/6164f987875e87a4dbb1404e/626f5bb404af2a844fec9702_Southern%20Cross%20Prospectus%20-%2017%20March%202022%20Final%20Version.pdf

Costerfield: Mandalay Resources News Releases, 8 June 2021 - Mandalay Resources Extends The Newly Discovered Shepherd Zone And Provides Update On The Costerfield Mineral System, and

9 June 2022 – Mandalay Resources Corporation Intersects 1,780g/t Gold Over 0.17 m in its Costerfield Regional Drilling Program at the Robinson Prospect

Fosterville South Exploration News Release, 14 October 2021 - Fosterville South's Initial Follow Up to Discovery Hole at Reedy Creek Shows System's Ability to Produce Very High Grades, With Drill Assays up to 238.1 g/t Gold in Shallow Drilling

E79 Resources News Release, 14 June 2021 - E79 Resources Drills 11.10m Of 160.45 G/T Gold At The Happy Valley Prospect, Victoria, Australia

Agnico Eagle: Kirkland Lake Gold News Release, 30 August 2021 - Kirkland Lake Gold Announces New High-Grade, Visible-Gold Bearing Intersections Down-Plunge Of Swan Zone, At Cygnet And At Robbin's Hill – Fosterville Mine