

## ASX Release

5<sup>th</sup> December 2022

### TENEMENT STATUS UPDATE

**Dart Mining NL (ASX:DTM)** (“Dart Mining” or “the Company”) is pleased to announce the grant of two new tenements, EL007099 (Victoria) and EL9476 (New South Wales), and two additional tenement applications in New South Wales (ELA6536 & ELA6548), intended to target fractionated granites prospective for Lithium-Caesium-Tantalum pegmatite mineralisation. Additionally, four existing licences in Victoria have been renewed for a further five years.

**“Together, these developments bolster Dart’s position as a critical minerals explorer on the East Coast of Australia”**

#### Highlights

- EL006277, EL006300 & EL5315 which jointly form the foundation of the Dorchap Lithium project have been renewed for a further five years
- EL007099 (Sandy Creek) has been granted in Northeast Victoria
- EL006016 (Rushworth) has been renewed for a further five years in Central Victoria
- EL9476 (Woomargama) has been granted for a period of four years in New South Wales, targeting Li, Cs, Ta, and W mineralisation
- Two tenement applications EL6536 (Yambaccona) & EL6548 (Barellan) placed across fractionated granites in New South Wales

#### Chairman, James Chirnside commented:

“The renewal of the Dorchap Lithium tenements provides certainty and continuity to our Lithium exploration efforts here in Victoria. The successful grants and applications in NSW expand the company’s Lithium exploration footprint overall. Together, these developments bolster Dart’s position as a critical minerals explorer on the East Coast of Australia”

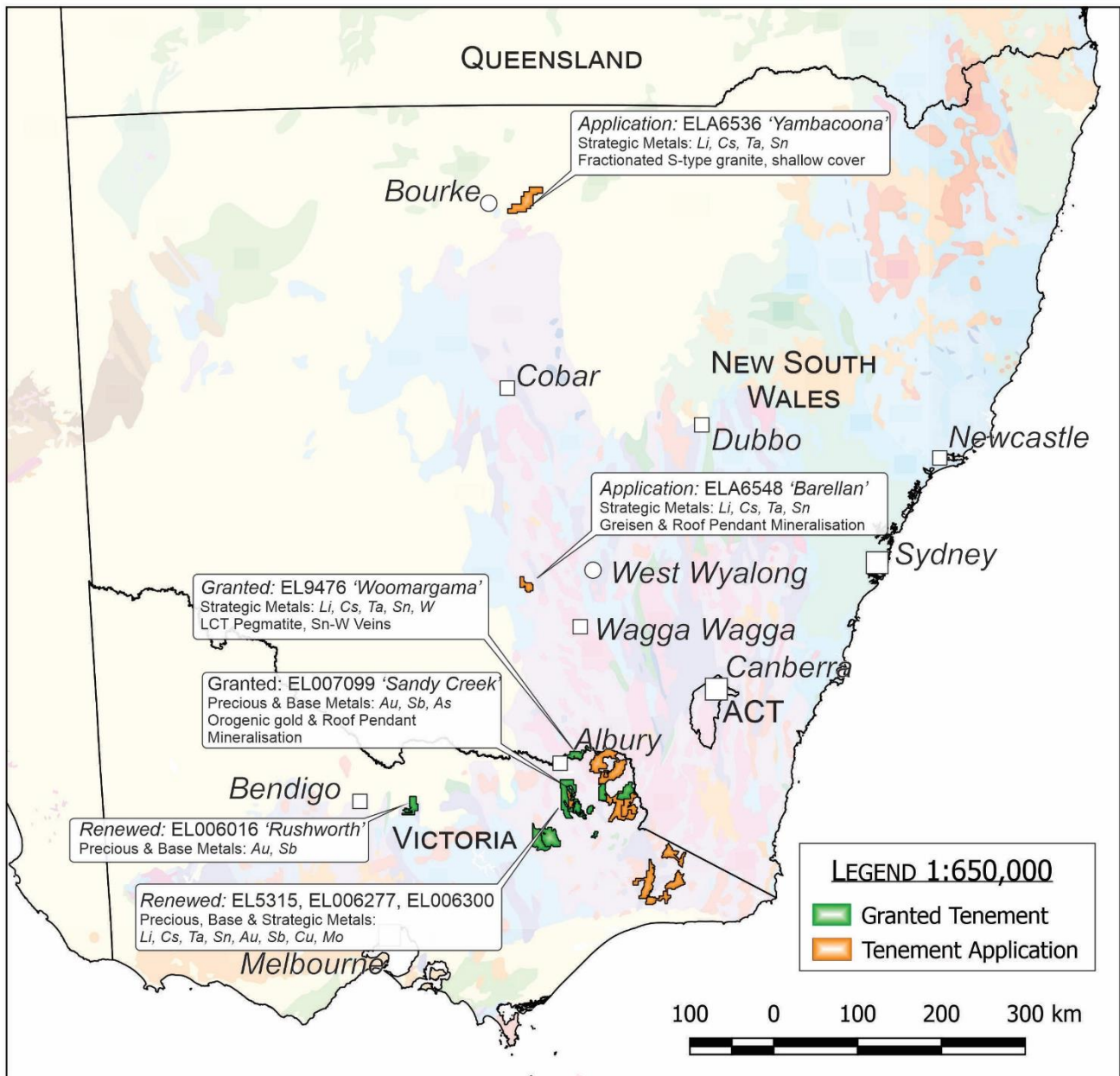
---

Visit our webpage:  
[www.dartmining.com.au](http://www.dartmining.com.au)

Find us on LinkedIn:  
Dart Mining NL

For more information, contact:  
James Chirnside, Managing Director  
Email: [jchirnside@dartmining.com.au](mailto:jchirnside@dartmining.com.au)  
Phone: +61 447 447 613

Dart Mining NL  
ABN: 84 119 904 880  
412 Collins Street  
Melbourne  
VIC 3000



**Figure 1:** Location and details for the recently granted renewed exploration licences in Victoria and New South Wales, along with details of recent tenement applications in New South Wales.

## Tenement Status Update

### Dorchap Lithium Project

Dart Mining has received notification from Earth Resources Regulation Victoria that exploration licences EL5315 (Mitta), EL006277 (Empress), and EL006300 (Eskdale) have each been renewed for a period of five years, providing assurance of tenure across the Dorchap Lithium Project (Figure 1). This follows the announcement of Dart Mining's earn-in agreement with Sociedad Química y Minera de Chile S.A SQM (NYSE:SQM) ([DTM ASX Release 26<sup>th</sup> July 2022](#)). Jointly, EL5315, EL006277 & EL006300 form the core of Dart Mining's Dorchap Lithium Project. Additionally, EL006277 (Empress) also hosts Dart Mining's wholly-owned intrusion-related Granite Flat Cu-Au project, upon which diamond drilling is currently underway.

### ***Sandy Creek Gold Project***

The grant of EL007099 (Sandy Creek) and the renewal of EL006300 (Eskdale), means Dart Mining has the exclusive exploration rights across the Sandy Creek Goldfield in Northeast Victoria, 35 kilometres southeast of Albury-Wodonga (Figure 1). The grant of EL007099 (Sandy Creek) allows access to walk-up drill targets that have been previously identified by Dart Mining geologists. The renewal of EL006300 (Eskdale) incorporates several prospects ([\*DTM ASX Release 16<sup>th</sup> February 2021\*](#)), with drilling results including:

- **5m @ 5.75 g/t Au** from 18m in SRERAB32B at O'Dell's, *including 3m @ 8.8 g/t Au*
- **5m @ 3.96 g/t Au** from 2m in SRERAB37 at O'Dell's, *including 1m @ 15.5 g/t Au*
- **9m @ 1.75 g/t Au** from 31m in SRERAB06 at Honeysuckle, *including 1m @ 5.47 g/t Au*

EL006300 has been demonstrated to host narrow, high-grade gold-arsenic and gold-antimony mineralisation in chip samples, e.g. Sample 70310: **0.2m @ 122 g/t Au & 0.2% Sb**; Sample 69790: **2.5m @ 12.3 g/t Au** ([\*DTM ASX Release 3<sup>rd</sup> July 2020\*](#)). Walk-up drill targets on the recently granted EL007099 (Sandy Creek) tenement include the Wild Horse prospect, where silica-sulphide Au-As mineralisation has been sampled, returning **4m @ 5.16 g/t Au** ([\*DTM ASX Release 3<sup>rd</sup> July 2020\*](#)).

### ***Rushworth Gold Project***

EL006016 (Rushworth; Figure 1), in conjunction with EL007007 and EL006994 span the entirety of the Rushworth Goldfield. The renewal of EL006016 (Rushworth) for a further five years will allow further exploration and development of the Rushworth Orogenic Gold Project. A regional soil survey is currently underway across the footprint of the Rushworth Goldfield, which is largely encapsulated with EL006016. Drilling undertaken on the Pheonix Hill prospect identified several gold intercepts ([\*DTM ASX Release 6<sup>th</sup> April 2021\*](#)), including:

- **12m @ 1.26 g/t Au; including 2m @ 3.49 Au** in RARC06 from surface
- **8m @ 1.02 g/t Au; including 3m @ 2.26 g/t Au** in RBRC07 from surface
- **19m @ 1.1 g/t Au; including 5m @ 2.3 g/t Au** in RBRC08 from surface
- **3m @ 4.0 g/t Au; including 1m @ 10.8 g/t Au** in RCRC08 from 18m
- **2m @ 4.07 g/t Au; including 1m @ 7.1 g/t Au** in RDRC03

### ***New South Wales Critical Mineral Projects***

Exploration licence EL9476 (Woomargama) has been granted across an area of 188 km<sup>2</sup>, immediately adjacent the Victoria-New South Wales border (Figure 1). This tenement is situated to target vein-style and pegmatite-hosted Tin-Tungsten mineralisation. The tenement lies between the Mullengandra tinfield in New South Wales and the Walwa-Jingellic Tin-Tantalum-Tungsten mineralisation systems which spans the Victoria-New South Wales border.

An exploration licence application (ELA6536 – Yambacoona) has been placed across Doradilla-Yambacoona area immediately east of the township of Bourke in northern New South Wales (Figure 1). Tin mineralisation is known in the Doradilla-Yambacoona prospect area, and has potential to be associated with fractionated S-type granites capable of generating Li-Cs-Ta pegmatites. The Stanthorpe Sn province occurs in north-eastern New South Wales, within the New England Orogen, and is associated with over 150 individual tin deposits, which collectively indicate good prospectivity for ELA6536, particularly when coupled with geophysical datasets indicating that a portion of the Brewarrina Granite pluton continues beneath shallow cover, providing a previously unidentified target play.

An additional exploration licence application (ELA6548 – Barellan) has been placed in the central west of New South Wales (Figure 1). The Barellan play is completely concealed by the Cenozoic cover; however, signatures within aeromagnetic data and the likely peraluminous nature of associated granites and the regionally proximal occurrence of tin mineralisation are positive features of the target. While under thin cover, Dart considers that the concept can be quickly and economically tested. If successful, the project opens significant opportunities for discoveries of other LCT occurrences within the Lachlan Fold Belt of NSW.

**Approved by the Managing Director.**

**For more information contact:**

**James Chirnside**

*Managing Director*

Dart Mining NL

jchirnside@dartmining.com.au

+61 447 447 613

**Peter Taylor**

*Investor Relations*

NWR Communications

peter@nwrcommunications.com.au

+61 412 036 231

**About Dart Mining**

*Dart Mining's (ASX: DTM) objective is in exploring, evaluating, and developing, several historic goldfields, as well as validating a new porphyry province in Northeast Victoria. The area is prospective for precious, base, battery, and other strategic metals. These include Lithium, Gold, Silver, Copper, Molybdenum, Zinc, Tungsten, Tin, Tantalum, and other important minerals. Dart Mining has built a strategically important gold exploration footprint in the Central and Northeast regions of Victoria, where historic surface and alluvial gold mining proves the existence of a significant regional gold endowment.*

*Additional information on Dart Mining's other recent and current exploration activities can be found in:*

**21<sup>st</sup> September 2022:** ["Granite Flat Deep Diamond Results"](#)

**18<sup>th</sup> August 2022:** ["High Grade Au-Ag-Cu Assays from Granite Flat Rock Samples"](#)

**26<sup>th</sup> July 2022:** ["Dorchap Lithium Earn-in Agreement with SQM"](#)

**23<sup>rd</sup> June 2022:** ["Spodumene Dominant in Dorchap Lithium Project"](#)

**27<sup>th</sup> October 2021:** ["LiDAR Points Towards Increase in Lithium Pegmatites"](#)

**6<sup>th</sup> October 2021:** ["Lithium Drilling Update"](#)

**22<sup>nd</sup> September 2021:** ["Mt Elmo Goldfield Mineralisation"](#)

**20<sup>th</sup> July 2021:** ["Strategic and Technology Metals"](#)

**6<sup>th</sup> April 2021:** ["Strong Gold Mineralisation Intercepted at Rushworth"](#)

**16<sup>th</sup> February 2021:** ["Sandy Creek Significant Gold Mineralisation"](#)

**16<sup>th</sup> November 2020:** ["Drilling Commencement, Historic Rushworth Goldfield"](#)

**5<sup>th</sup> November 2020:** ["Rushworth Historic High-Grade Goldfield"](#)

**30<sup>th</sup> October 2020:** ["Report for the quarter ended 30<sup>th</sup> September 2020"](#)

**19<sup>th</sup> October 2020:** ["Drill Results Reveal High-Grade Gold"](#)

**Table 1: Tenement status and details.**

Tenement Number	Name	Tenement Type	Area (km <sup>2</sup> ) Unless specified	Interest	Location
<b>MIN006619</b>	Mt View <sup>2</sup>	Mining License	224 Ha	100%	NE Victoria
<b>EL5315</b>	Mitta Mitta <sup>4</sup>	Exploration Licence	148	100%	NE Victoria
<b>EL006016</b>	Rushworth <sup>4</sup>	Exploration Licence	32	100%	Central Victoria
<b>EL006277</b>	Empress	Exploration Licence	87	100%	NE Victoria
<b>EL006300</b>	Eskdale <sup>3</sup>	Exploration Licence	96	100%	NE Victoria
<b>EL006486</b>	Mt Creek	Exploration Licence	116	100%	NE Victoria
<b>EL006764</b>	Cravensville	Exploration Licence	170	100%	NE Victoria
<b>EL006861</b>	Buckland	Exploration Licence	414	100%	NE Victoria
<b>EL007007</b>	Union	Exploration Licence	3	100%	Central Victoria
<b>EL006994</b>	Wangara	Exploration Licence	190	100%	Central Victoria
EL007008	Buckland West	Exploration Licence	344	100%	NE Victoria
EL007099	Sandy Creek	Exploration Licence	437	100%	NE Victoria
EL006865	Dart	<i>EL (Application)</i>	567	100%	NE Victoria
EL006866	Cudgewa	<i>EL (Application)</i>	508	100%	NE Victoria
EL007170	Berringama	<i>EL (Application)</i>	27	100%	NE Victoria
EL007430	Buchan	<i>EL (Application)</i>	546	100%	Gippsland
EL007435	Goonerah	<i>EL (Application)</i>	587	100%	Gippsland
EL007425	Deddick	<i>EL (Application)</i>	341	100%	Gippsland
EL007428	Boebuck	<i>EL (Application)</i>	355	100%	NE Victoria
EL007426	Walwa	<i>EL (Application)</i>	499	100%	NE Victoria
EL007754	Tallandoon	<i>EL (Application)</i>	88	100%	NE Victoria
<b>RL006615</b>	Fairley's <sup>2</sup>	Retention License	340 Ha	100%	NE Victoria
<b>RL006616</b>	Unicorn <sup>1&amp;2</sup>	Retention License	23,243 Ha	100%	NE Victoria
EL9476	Woomargama	Exploration Licence	188	100%	New South Wales
ELA6536	Yambacoon	<i>EL (Application)</i>	549	100%	New South Wales
ELA6548	Barellan	<i>EL (Application)</i>	159	100%	New South Wales

**All tenements remain in good standing as of 30<sup>th</sup> November 2022.**

**NOTE 1:** Unicorn Project area subject to a 2% NSR Royalty Agreement with Osisko Gold Royalties Ltd dated 29 April 2013.

**NOTE 2:** Areas subject to a 1.5% Founders NSR Royalty Agreement.

**NOTE 3:** Areas are subject to a 1.0% NSR Royalty Agreement with Minvest Corporation Pty Ltd (See DTM ASX Release 1 June 2016).

**NOTE 4:** Areas are subject to a 0.75% Net Smelter Royalty on gold production, payable to Bruce William McLennan.