



# Investor Presentation

*Specialised Undercover Explorers  
and Project Generators*



# Disclaimer and compliance statement



This presentation has been prepared by Strategic Energy Resources Limited (ASX: SER) (SER or the Company). It contains general information about the Company's activities current as at the date of the presentation. The information is provided in summary form and does not purport to be complete. This presentation is not to be distributed (nor taken to have been distributed) to any persons in any jurisdictions to whom an offer or solicitation to buy shares in the Company would be unlawful. Any recipient of the presentation should observe any such restrictions on the distribution of this presentation and warrants to the Company that the receipt of the presentation is not unlawful. It should not be considered as an offer or invitation to subscribe for or purchase any securities in the Company or as an inducement to make an offer or invitation with respect to those securities. No agreement to subscribe for securities in the Company will be entered into on the basis of this presentation or any information, opinions or conclusions expressed in the course of this presentation. This presentation is not a prospectus, product disclosure document or other offering document under Australian law or under any other law. It has been prepared for information purposes only and is not a recommendation as to whether to invest in SER shares. The information contained in this presentation is not investment or financial product advice and is not intended to be used as the basis for making an investment decision. The presentation has been prepared without taking into account the investment objectives, financial situation or particular needs of any particular person. Unless otherwise specified, data and tables set out in this presentation are based on SER management estimates.

This presentation does not include all available information on SER, and any potential investor should also refer to SER's Annual Reports and ASX releases and take independent professional advice before considering investing in SER. For more information about Strategic Energy Resources Limited, visit the website at <http://www.strategicenergy.com.au/>.

No representation or warranty, express or implied, is made as to the fairness, accuracy, completeness or correctness of the information, opinions and conclusions contained in this presentation. To the maximum extent permitted by law, none of SER or its directors, or any of their employees or agents, nor any other person accepts any liability, including, without limitation, any liability arising out of fault of negligence, for any loss arising from the use of the information contained in this presentation. In particular, no representation or warranty, express or implied is given as to the accuracy, completeness or correctness, likelihood of achievement or reasonableness or any forecasts, projections, prospects or returns contained in this presentation nor is any obligation assumed to update such information. Such forecasts, prospects or returns are by their nature subject to significant uncertainties and contingencies. Past performance is no guarantee of future performance.

This presentation may contain "forward-looking statements" within the meaning of securities laws of applicable jurisdictions. Forward-looking statements can generally be identified by the use of forward-looking words such as "may", "will", "expect", "intend", "plan", "estimate", "anticipate", "believe", "continue", "objectives", "outlook", "guidance" or other similar words, and include statements regarding certain plans, strategies and objectives of management and expected financial performance. These forward-looking statements involve known and unknown risks, uncertainties and other factors, many of which are outside the control of SER and any of its officers, employees, agents or associates. Actual results, performance or achievements may vary materially from any projections and forward-looking statements and the assumptions on which those statements are based. Readers are cautioned not to place undue reliance on forward-looking statements and SER assumes no obligation to update such information.

This announcement has been approved for release by the Board of Strategic Energy Resources.

# Corporate Overview

Tight capital structure with an invested team

## Capital Structure

Share Price (2/10/23)	1.3c
Shares on issue	486M
Market cap.	\$6.5M
Cash (1/09/23)	\$2.0M

## Major Shareholders

Graeme Kirke	13%
Datt Capital	11%
Board & Management	9%
Top 20	53%

## Board & Management



**Stuart Rechner**  
Executive Chairman  
BSc (Geology) LLB MAIG  
MAusIMM MSEG GAICD



**David DeTata**  
Managing Director  
BSc MSc PhD (Chemistry) MBA  
GAICD AAusIMM



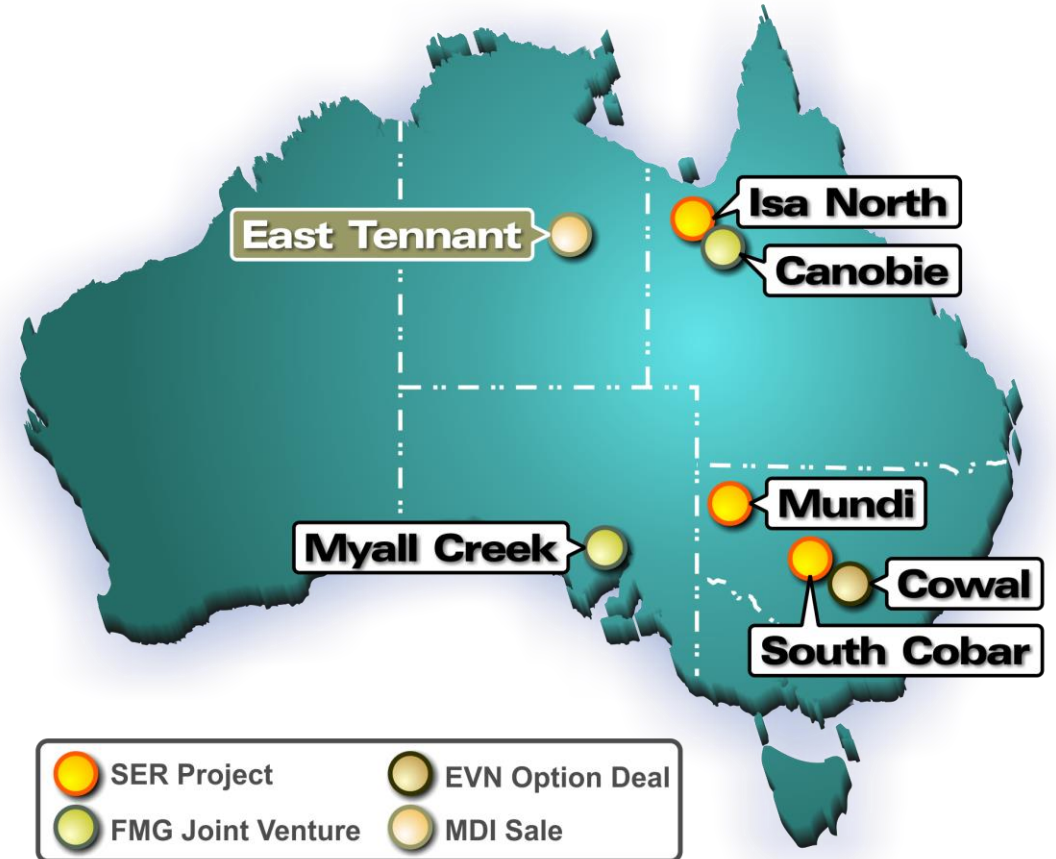
**Anthony McIntosh**  
Non-Executive Director  
BCom GAICD



**Neil Chalmers**  
Exploration Manager  
BSc MSc (Geology) MAIG



**Chris Yeats**  
Manager, NSW  
BSc MSc PhD (Geology) MAIG



# Our Strategy

## Specialised Undercover Explorers and Project Generators



### SCIENCE DRIVEN

Internal project generation; Leverage pre-competitive data;  
Target Tier-1 Ni-Cu-Au discoveries undercover in Greenfield frontiers

### TECHNICAL EXCELLENCE

Geophysics led exploration; Collaborate with industry experts;  
Partner with Research & Development leaders

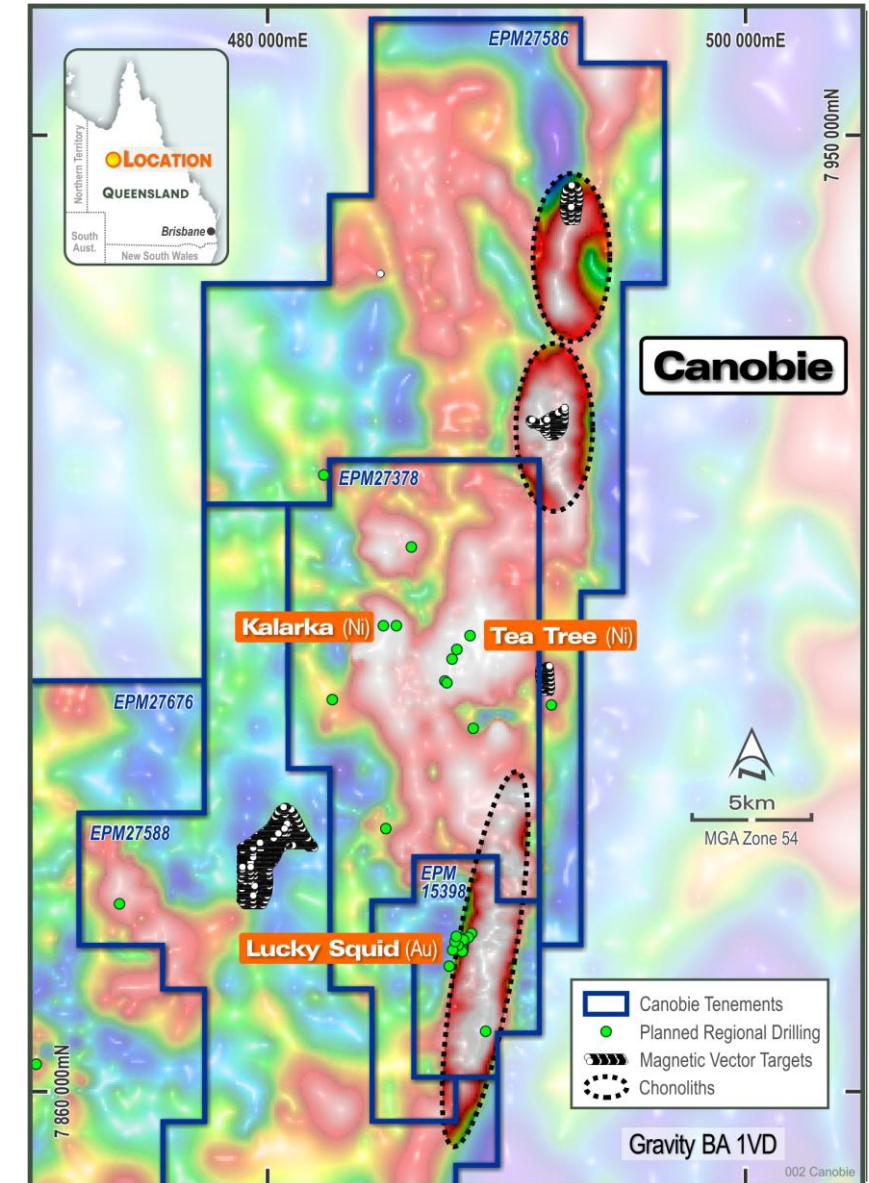
### SHARE RISK & REWARD

Pursue Joint Ventures or divest; Maintain exposure to exploration upside;  
Return cash to fund on-going project generation

# Canobie Ni-Cu + Cu-Au Project

## A Forgotten Polymetallic Province

- >2,000km<sup>2</sup> within the Mt Isa Eastern Succession; includes 100km extension of the N/S Quamby fault; host to Ernest Henry Cu-Au Gold mine (140km south)
- High-grade Gold intercepts drilled at the Lucky Squid Prospect including;
  - 2008 Anglo American: SXDD005 - **17m @ 6.75g/t Au** from 631m
  - 2010 AngloGold Ashanti: SXDD014 - **15m @ 9.09g/t Au** from 699m
  - 2019 SER: SXDD020 - **6m @ 12.08 g/t Au** from 519m **incl. 2m @ 32g/t Au**
- Significant Nickel intercepts at the Tea Tree and Kalarka Prospects including;
  - 1994 MIM Exploration: TT001D - **10.4m @ 0.25% Ni, 0.28% Cu** from 508.2m
  - 2021 SER: CNDD001A - 132m @ 0.1% Ni from 507m incl. **2m @ 0.68% Ni, 0.17% Cu** from 635m
  - 2021 SER: CNDD002 - 43m @ 0.1% Ni from 615m and **0.6m @ 0.96% Ni, 0.11% Cu** from 661.6m<sup>1</sup>
- Gravity survey & Magnetic Remanence study identified numerous clusters of vector magnetic anomalies coincident with **interpreted chonoliths**<sup>2</sup>
- Chonolith style intrusions are analogous to those seen in globally significant Nickel deposits including Noril'sk – Talnakh (Russia), and Nova-Bollinger (W.A.)



<sup>1</sup> ASX SER Announcement December 2021

<sup>2</sup> ASX SER Announcement November 2022

# Fortescue Farm-in Joint Venture

The drill rig is spinning...

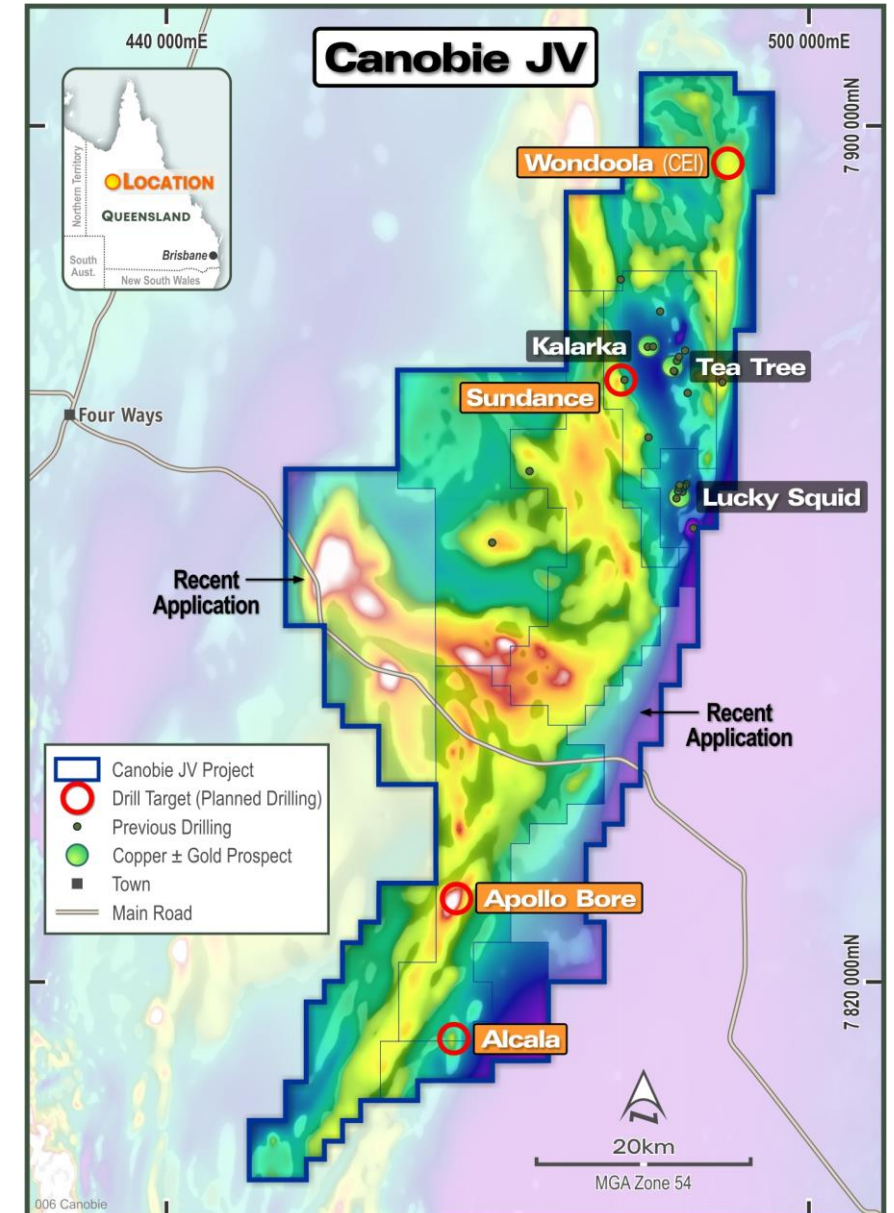
**Stage 1:** Fortescue to earn 51% by spending \$4M on exploration which must include drilling a **minimum of 3,000m of basement** within the first three years

- SER to conduct all exploration has allowed rapid progress
- Minimum of \$2.5M in expenditure on exploration within the first 2 years
- **Only basement metres count towards drilling requirement**

**Stage 2:** Fortescue may earn an additional 29% by spending an additional \$4M over 3 years including a **minimum of 3,000m of additional basement** drilling

- Following FMG earning the Stage 2 interest an 80/20 JV will be formed
- SER to contribute 20% of expenditure or interest diluted via standard formula; SER's historical expenditure recognised for dilution calculation
- If economic deposit discovered and decision to mine made, Mining Lease (ML) area excised from JV and SER may join development or sell interest in ML area

**2023 Exploration program underway: Currently drill testing 1x Magmatic Ni target (CEI funded) with follow-up IOCG targets (4,000m budgeted)**

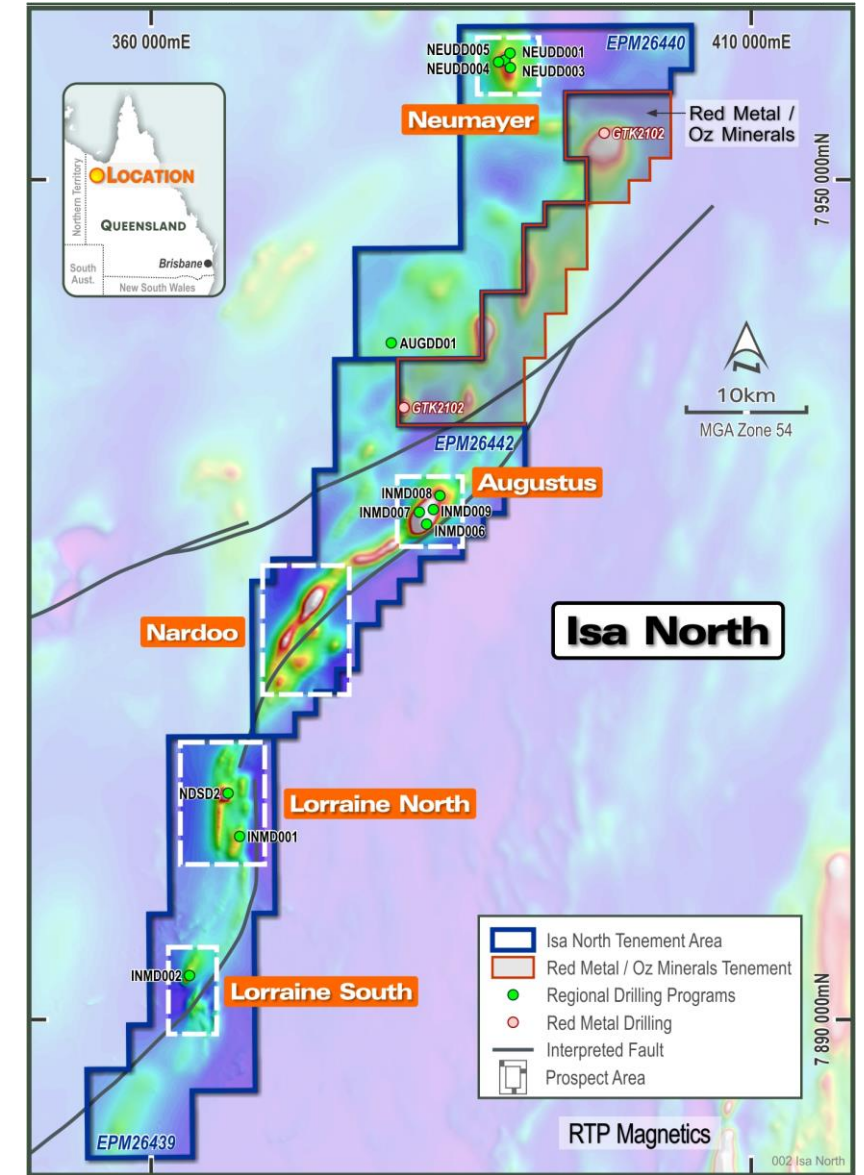


# Isa North Cu-Au Project

## First mover advantage

- Acquired from Newcrest in 2021; Newcrest retain a FROR and 1% NSR (10yrs)<sup>1</sup>
- Entire region is now secured by Fortescue, Rio Tinto and Anglo American
- Newcrest drilled (5,190m) across 4 targets; Lorraine North (INMD001) identified as a near-miss;
  - Chalcopyrite in hydrothermal breccia and carbonate veins<sup>2</sup>
  - **Interpreted Tier-1 halo intercept** within a >5km hydrothermal system – High Priority Target
- Follow-up drilling hindered due to landholder access – SER has secured
- 2021 Red Metal Limited (ASX:RDM) intersected 44.4m of hydrothermal ironstone and breccia (GTK2101), Cu assay numbers up to 0.34% provided proof of concept<sup>3</sup>; subsequent interpretation being typical of proximal to an IOCG setting<sup>4</sup>

**Magnetotelluric (MT) survey set to commence mid October in search of alternative mineralisation styles – inform future drill program**



<sup>1</sup>ASX: SER Announcement: May 2021

<sup>2</sup>ASX: SER Announcement April 2022; <sup>3</sup>ASX: RDM Announcement January 2022

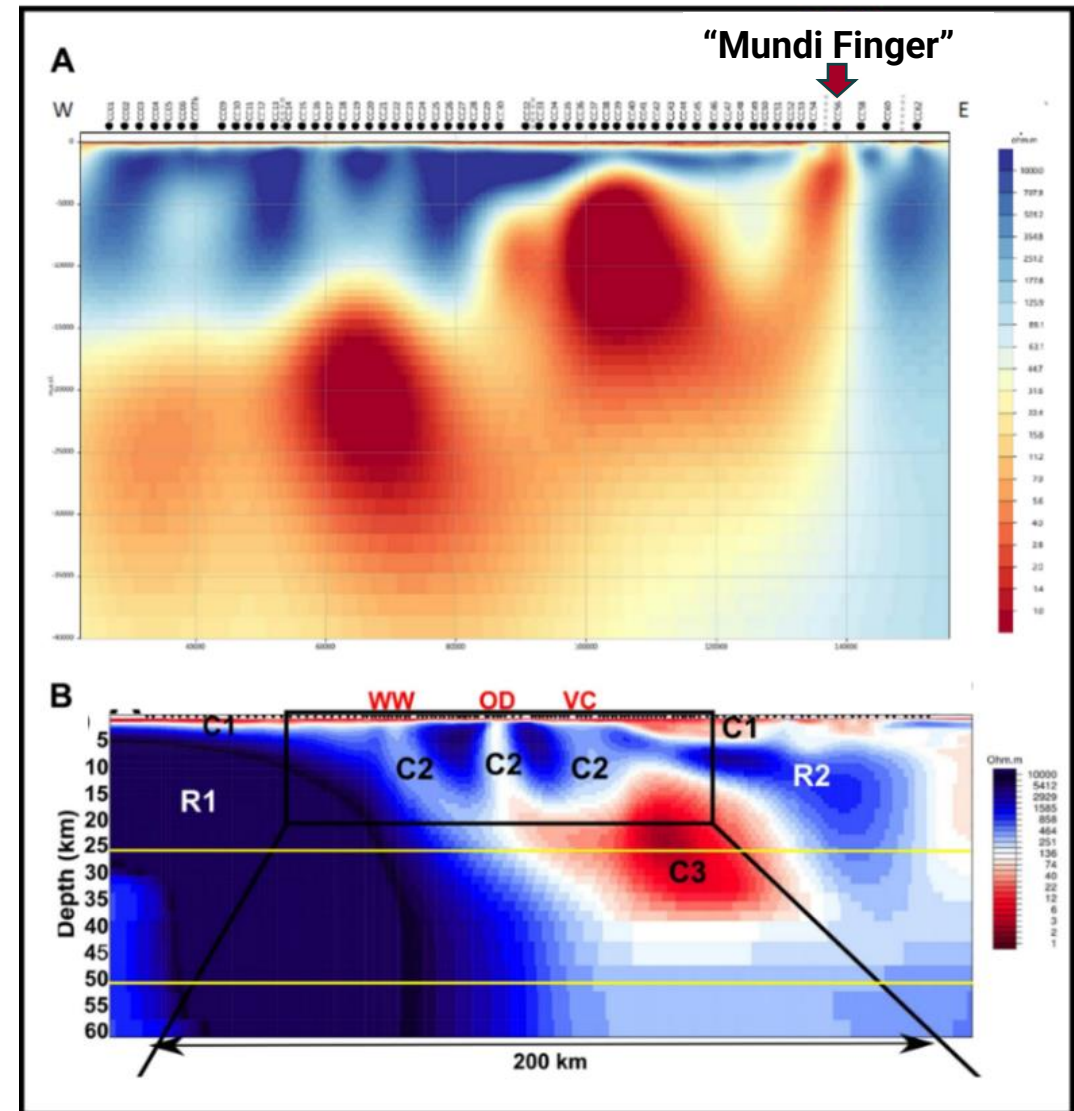
<sup>4</sup>ASX: RDM Announcement January 2023

# Mundi Cu-Au Project

## A True Greenfields project

- Located 150km NNW of Broken Hill within a known IOCG mineral province; covering over 200km<sup>2</sup> of the Curnamona Province
- Greenfields project with sparse exploration and a single drillhole
- Large crustal Conductivity Anomaly identified in the lower- to middle-crust by the 55km-spaced AusLAMP long period MT survey in 2016
- Resolved in the upper crust by the 2km- to 4km- spaced Curnamona Crustal Magnetotelluric Transect (CCMT) survey in 2017
- ‘Finger-shaped’ conductor identified in the CCMT, closet to the surface at station CC56, with strong similarities to MT conductivity anomalies that have been demonstrated to be associated with IOCG mineralisation within the Gawler Craton
- Co-funded (\$50k) **MT survey to define the conductor underway**<sup>1</sup>
- 2D and 3D modelling underway in collaboration with MinEx CRC
- **Results expected to define one or more drill targets**

<sup>1</sup> ASX: SER Announcement September 2023



(A) 2D resistivity model to a depth of 40km of the CCMT transect that crosses Mundi from Kay et al. (2019).  
 (B) 2D resistivity model to a depth of 60km across the Gawler Craton from Heinson et al. (2018). Note the similarity between feature C2 under Wirrda Well (WW), C2 under Olympic Dam (OD), C2 under Vulcan and the feature under station CC56 of the CCMT transect, which lies within the Mundi Exploration Licence



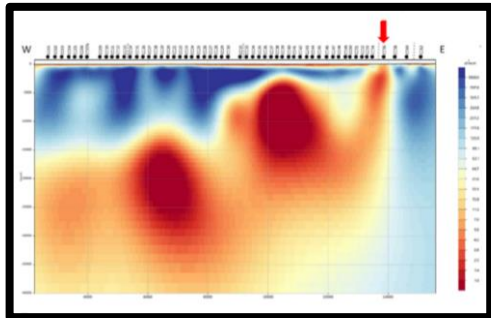
# Multiple Near Term Price Catalysts

High impact exploration programs underway ...



## CANOBIE Ni-Cu-Au FJV

- Fully funded drill program targeting magmatic Ni and magnetite IOCG's underway
  - First assays due November through to December 2023



## MUNDI Cu-Au PROJECT

- 95 Station MT survey near complete to define major conductor(s) at depth
  - Inversion modelling set to define potential drill target(s)



## ISA NORTH Cu PROJECT

- Large scale MT survey set to begin this month to investigate Sed-Cu potential
  - Results due mid-December which will inform follow-up program



## For further information

### Investors

**Dr David DeTata**  
Managing Director  
T +61 3 9692 7222

### Media

**Jonathan van Hazel**  
Citadel-MAGNUS  
T +61 8 6160 4906

---

### Registered Office

Level 4, 100 Albert Road  
South Melbourne, Victoria 3205

---

[info@strategicenergy.com.au](mailto:info@strategicenergy.com.au)

