



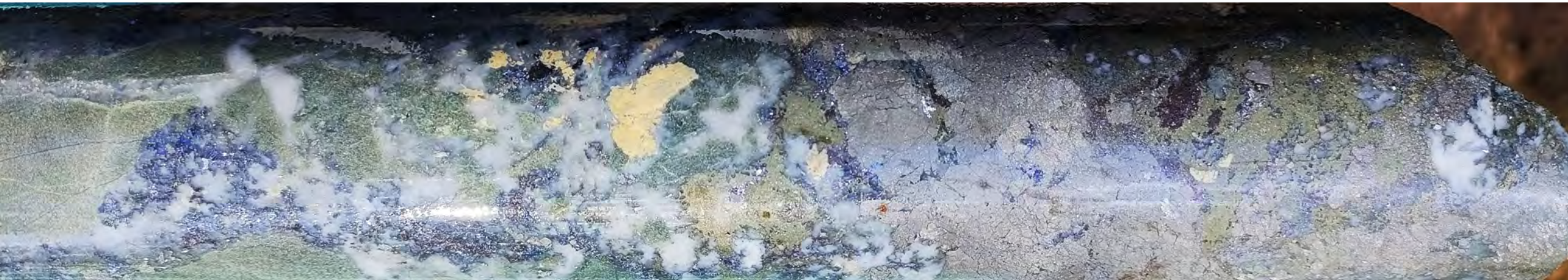
# Flynn Gold

ASX: FG1

## Explorers Conference

### Investor Presentation

### February 2024



*Trafalgar Prospect - Drill hole TFDD005 - Quartz-sulphide (pyrite-arsenopyrite-pyrrhotite-galena-sphalerite) vein at 120.3m (0.7m @ 152.5g/t Au)*

# Important Notice & Disclaimer

## OVERVIEW

This investor presentation (“**Presentation**”) has been prepared by Flynn Gold Limited (ABN 82 644 122 216) (“Flynn Gold” or “Company”) and is dated 13 February 2024.

## SUMMARY INFORMATION

This Presentation contains summary information about the current activities of Flynn Gold and its subsidiaries as at the date of this Presentation. The information in this Presentation is of a general nature and does not purport to be complete. This Presentation does not purport to contain all the information that an investor should consider when making an investment decision nor does it contain all the information which would be required in a disclosure document or prospectus prepared in accordance with the requirements of the Corporations Act. It should be read in conjunction with Flynn Gold’s other periodic and continuous disclosure announcements lodged with the ASX, which are available at [www.asx.com.au](http://www.asx.com.au). Neither Flynn Gold nor its directors, employees or advisers give any warranties in relation to the statements and information in this Presentation.

## DISCLAIMER

This presentation is for informational purposes only and does not constitute an offer to sell, or solicitation to purchase, any securities. Such Offer can be made only through proper subscription documentation and only to investors meeting strict suitability requirements. Any failure to comply with these restrictions may constitute a violation of applicable securities laws. In providing this presentation Flynn Gold Limited (“Flynn Gold”) has not considered the financial position or needs of the recipient. Persons needing advice should consult their stockbroker, bank manager, solicitor, attorney, accountant or other independent financial and legal advisors.

## FORWARD LOOKING STATEMENTS

Various statements in this presentation constitute statements relating to intentions, future acts and events. Such statements are generally classified as “forward looking statements” and involve known and unknown risks, uncertainties and other important factors that could cause those future acts, events and circumstances to differ materially from what is presented or implicitly portrayed herein. Words such as “anticipates”, “expects”, “intends”, “plans”, “believes”, “seeks”, “estimates” and similar expressions are intended to identify forward-looking statements. Flynn Gold caution shareholders and prospective shareholders not to place undue reliance on these forward-looking statements, which reflect the view of Flynn Gold only as of the date of this presentation. The forward-looking statements made in this presentation relate only to events as of the date on which the statements are made.

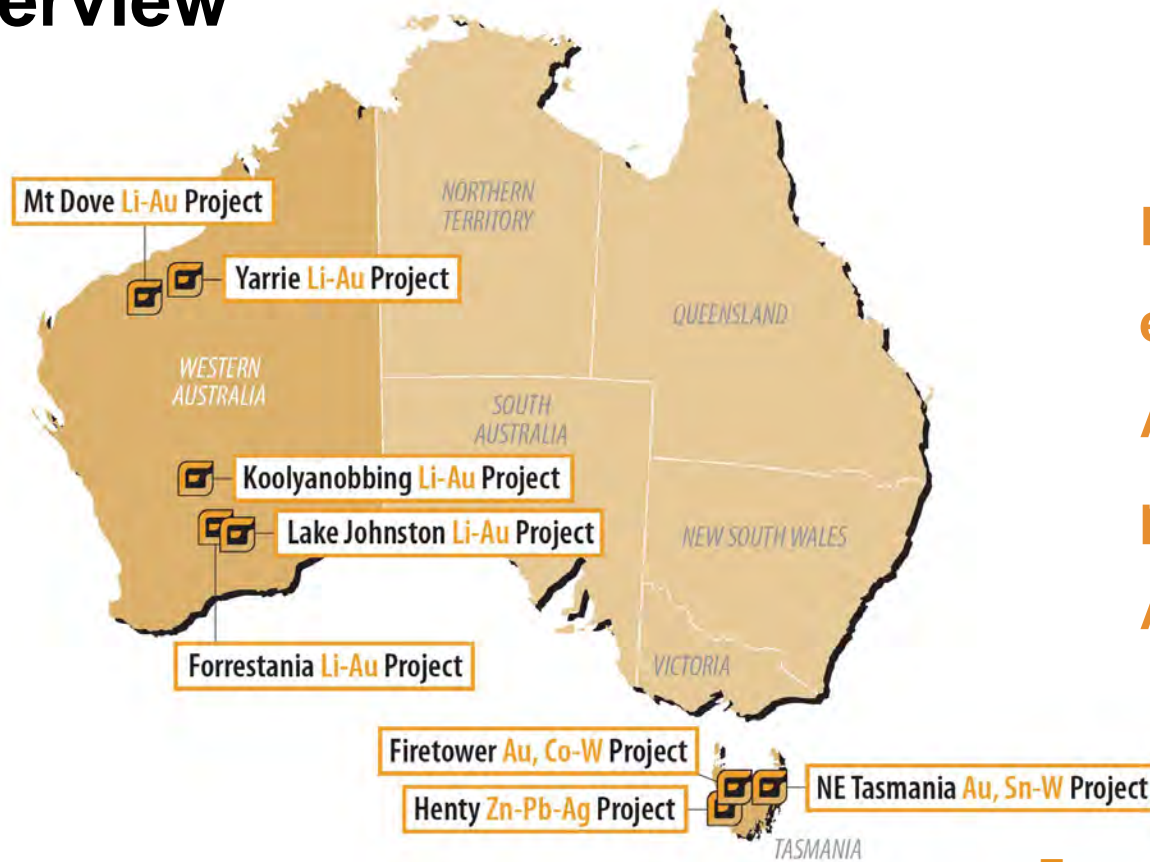
## COMPETENT PERSON STATEMENT EXPLORATION RESULTS

The information in this release is an accurate representation of the available data and studies for the material mining project. The information that relates to sampling techniques and data, exploration results and geological interpretation has been compiled by Sean Westbrook who is a consultant of the Company. Sean Westbrook is a Competent Person as defined in the JORC Code (2012). Sean has sufficient experience of relevance to the styles of mineralisation and the types of deposits under consideration, and to the activities undertaken, to qualify as a Competent Person as defined in the 2012 Edition of the Joint Ore Reserves Committee (JORC) Australasian Code for Reporting of Exploration Results.

## EXPLORATION RESULTS

Refer to Company Announcements for full details on Exploration Results. Flynn Gold is not aware of any new information or data that materially effects the information contained in those announcements.

# Overview



**Flynn Gold Limited is focused on the exploration and development of Australian gold and battery metals projects in Tasmania and Western Australia**

## Western Australia

- 15 granted Exploration Licences and 9 EL applications
- 1,140 km<sup>2</sup>, 100% Flynn Gold
- Pilbara – holdings close to significant gold & lithium deposits at Mt Dove and Yarrie
- Yilgarn – holdings close to world class lithium and nickel deposits at Forrestania and Koolyanobbing

## Tasmania

- 12 granted Exploration Licences
- 1,475 km<sup>2</sup>, 100% Flynn Gold
- Northeast Tasmania – interpreted extension of Victorian goldfields with significant gold and tin/tungsten historical mines
- Northwest Tasmania – Firetower and Henty projects with multiple gold and battery metals drill targets



# Company Snapshot

## Capital Structure

ASX Code	FG1
Share price: 12 <sup>th</sup> February 2024	A\$0.052
<b>Cash @ 31<sup>st</sup> December 2023<sup>1</sup></b>	<b>\$1.56M</b>
Debt	Nil
Shares on issue	164.1m
Market Cap at \$0.052/share	\$8.5M
<b>Enterprise Value at \$0.052/share</b>	<b>~\$7.0M</b>
Options <sup>2</sup>	3.0M
Options <sup>3</sup>	0.4M
Performance Rights <sup>4</sup>	3.7M

### Notes

1. Does not include \$1.1M raised in January 2024
2. Expiry June 2024, \$0.25/sh exercise price
3. Expiry Aug 2025, \$0.20/sh exercise price
4. 3 year performance rights upon meeting various vesting conditions

## Shareholders (as at 12<sup>th</sup> Feb 2024)

Colin Bourke and Associates	36.5%
Directors and Management	5.7%
Lowell Resources Fund	4.6%
<b>Top 20 Shareholders</b>	<b>68.9%</b>

# Directors



**Clive  
Duncan**  
Chair

- 4 decades with market leading big box hardware chain Bunnings Group, including as COO and company director. Harvard Program for Management development, Finance program at London Business School and is a Member of the Australian Institute of Company Directors (AICD).



**Neil  
Marston**  
Managing  
Director & CEO

- Qualified accountant and Chartered Secretary with extensive experience in the areas of mineral exploration, capital markets, corporate governance, project management and stakeholder engagement.



**Sam  
Garrett**  
Technical  
Director

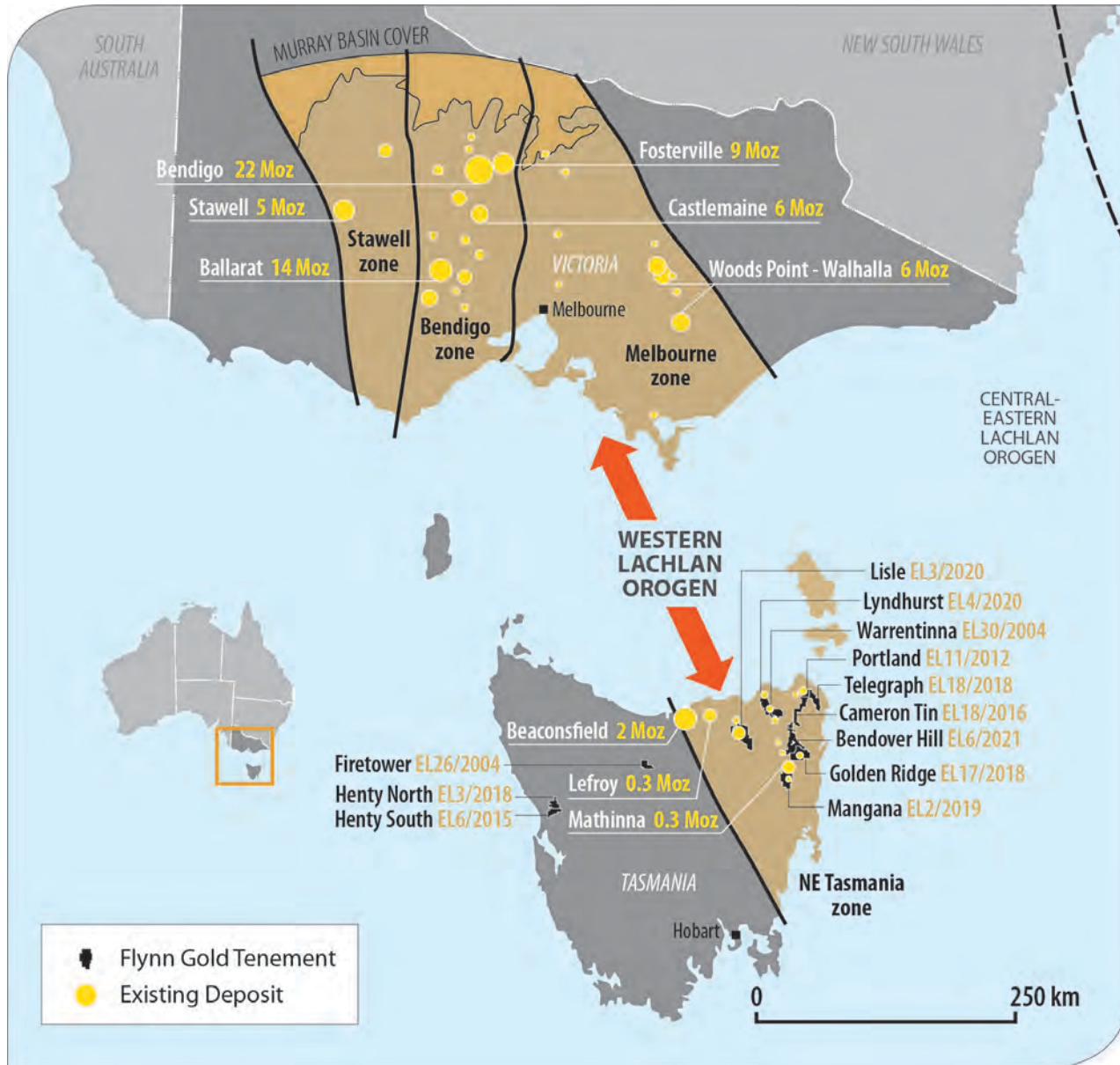
- Geologist with over 30 years of international exploration management including positions with Phelps Dodge and Cyprus Gold. Specialist in copper and gold exploration. Mt. Elliott, Havieron and Tujuh Bukit discovery credits.



**John  
Forwood**  
Non-Executive  
Director

- Director and CIO of Lowell Resources Funds Management (LRFM). Qualified lawyer and geologist. 20 years of resources financing experience, including as CIO of the Lowell Resources Trust and Director of RMB Resources.

# Northeast Tasmania



- **Northeast Tasmania** - part of the Western Lachlan Orogen – a **geological extension of the Victorian Goldfields**
- NE Tasmania has significant historic **high-grade gold production**:
  - ❑ **Beaconsfield Gold Mine**  
mined to 1,200m depth producing:
    - 1877-1914: **854,600oz @ 26g/t Au**
    - 1999-2012: **920,000oz @ 10.5g/t Au**
  - ❑ **New Golden Gate Gold Mine (Mathinna)**  
mined to 500m depth producing:
    - 1887-1926: **253,000oz @ 26g/t Au**
- Very little gold exploration over the last **100 years** provides great opportunities for fresh gold discoveries using modern exploration techniques

***FG1 has secured key under-explored ground with historical workings. These areas have excellent potential for new discoveries of high-grade gold vein systems as well as tin-tungsten***

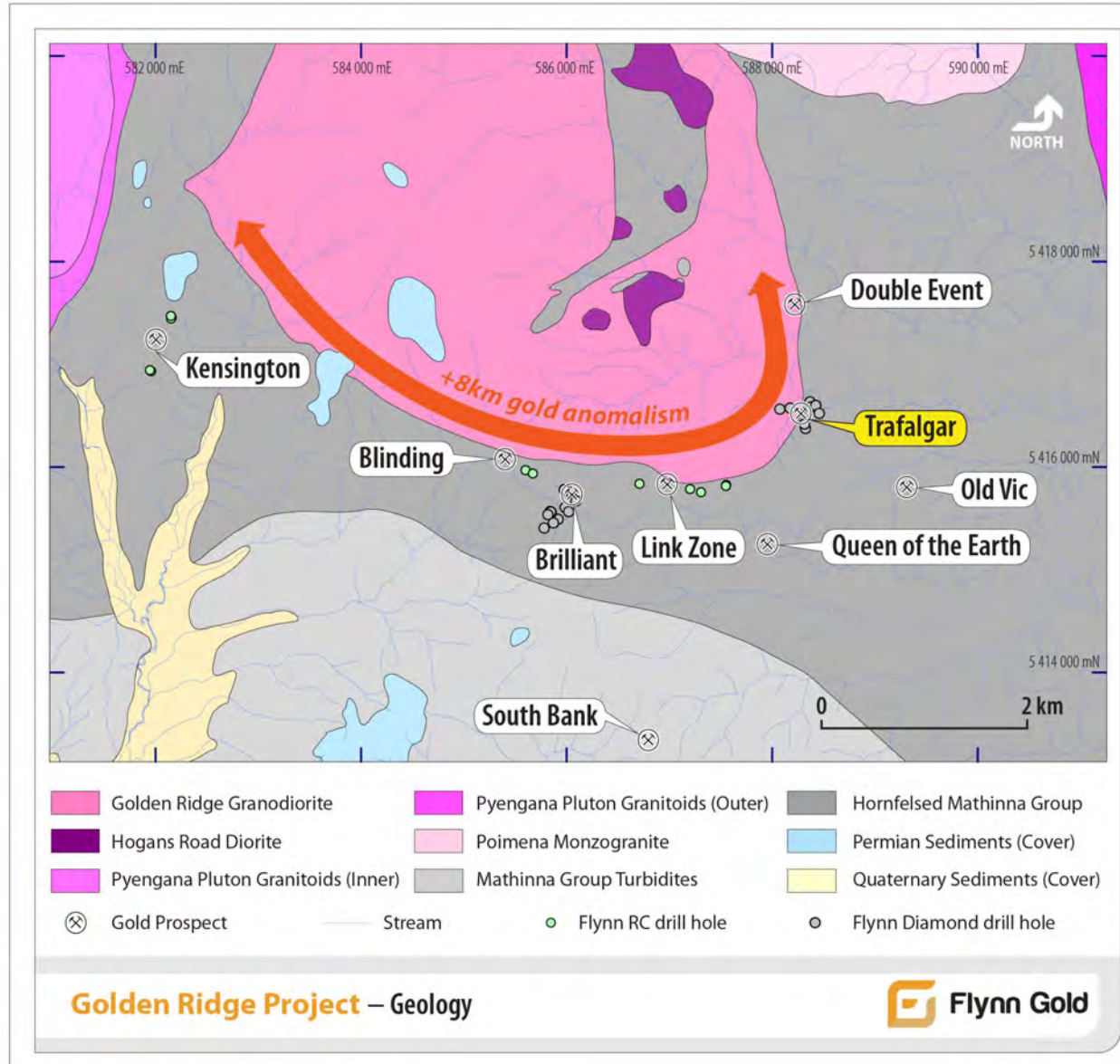
# Golden Ridge Project

## Positive Indications of a large Intrusive Related Gold System (IRGS)

- Historical shafts and adits at multiple prospects
- Significant gold anomalism near granodiorite-sediment contact (IRGS) - **8km mineralised zone**

## Flynn Gold Drilling Activities since 2021

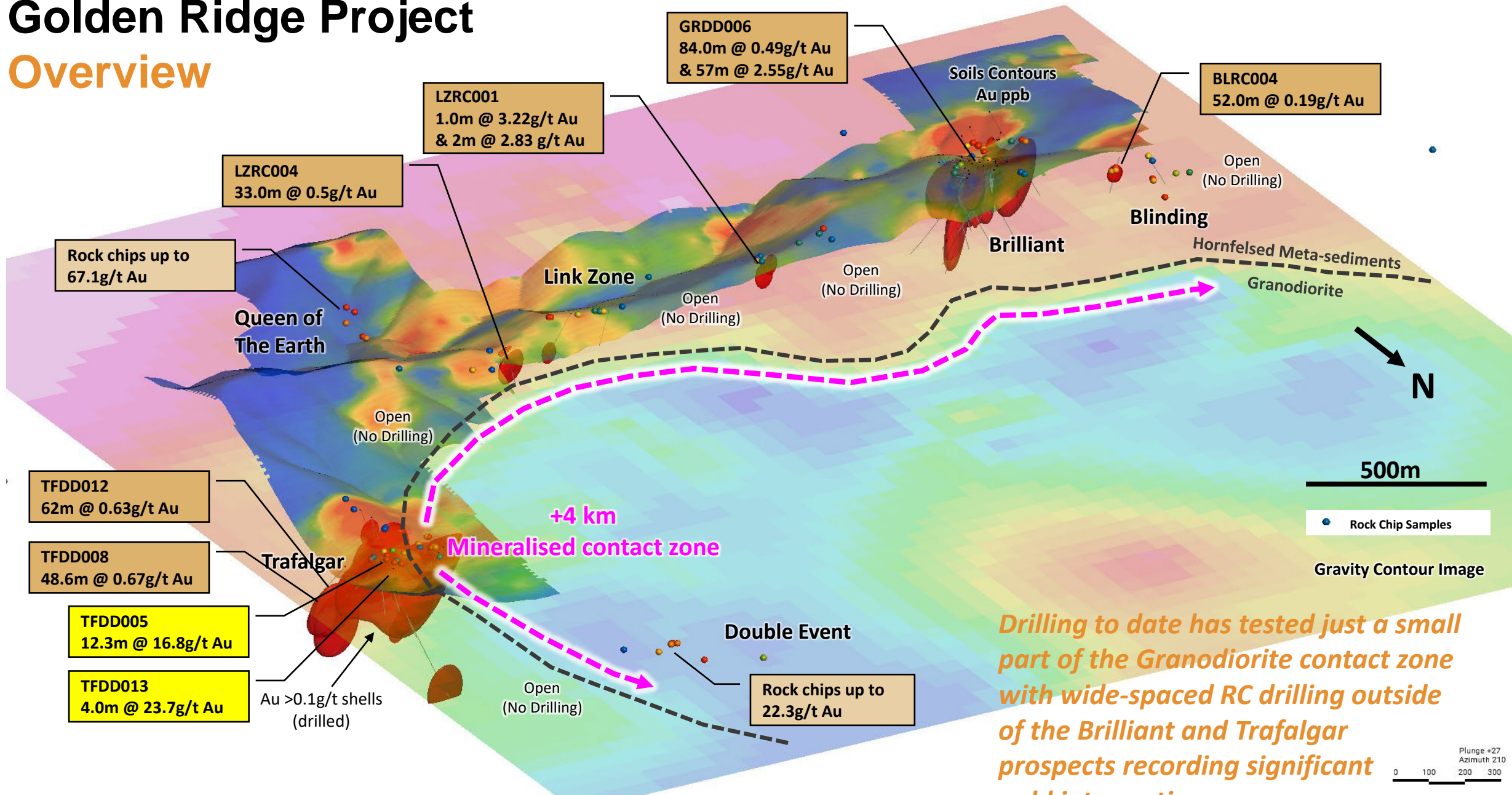
- Diamond drilling at **Brilliant** (14 holes) – **gold mineralised system is open along strike**
- Diamond drilling at **Trafalgar** (14 holes) - exceptional drilling results recorded with **high-grade (<100g/t Au) gold mineralisation demonstrating the potential for a significant resource**
- RC drilling at Kensington, Blinding and Link Zone (12 holes) - significant gold mineralisation intersected, **confirming potential for an extensive gold mineralisation system**





# Golden Ridge Project

## Overview



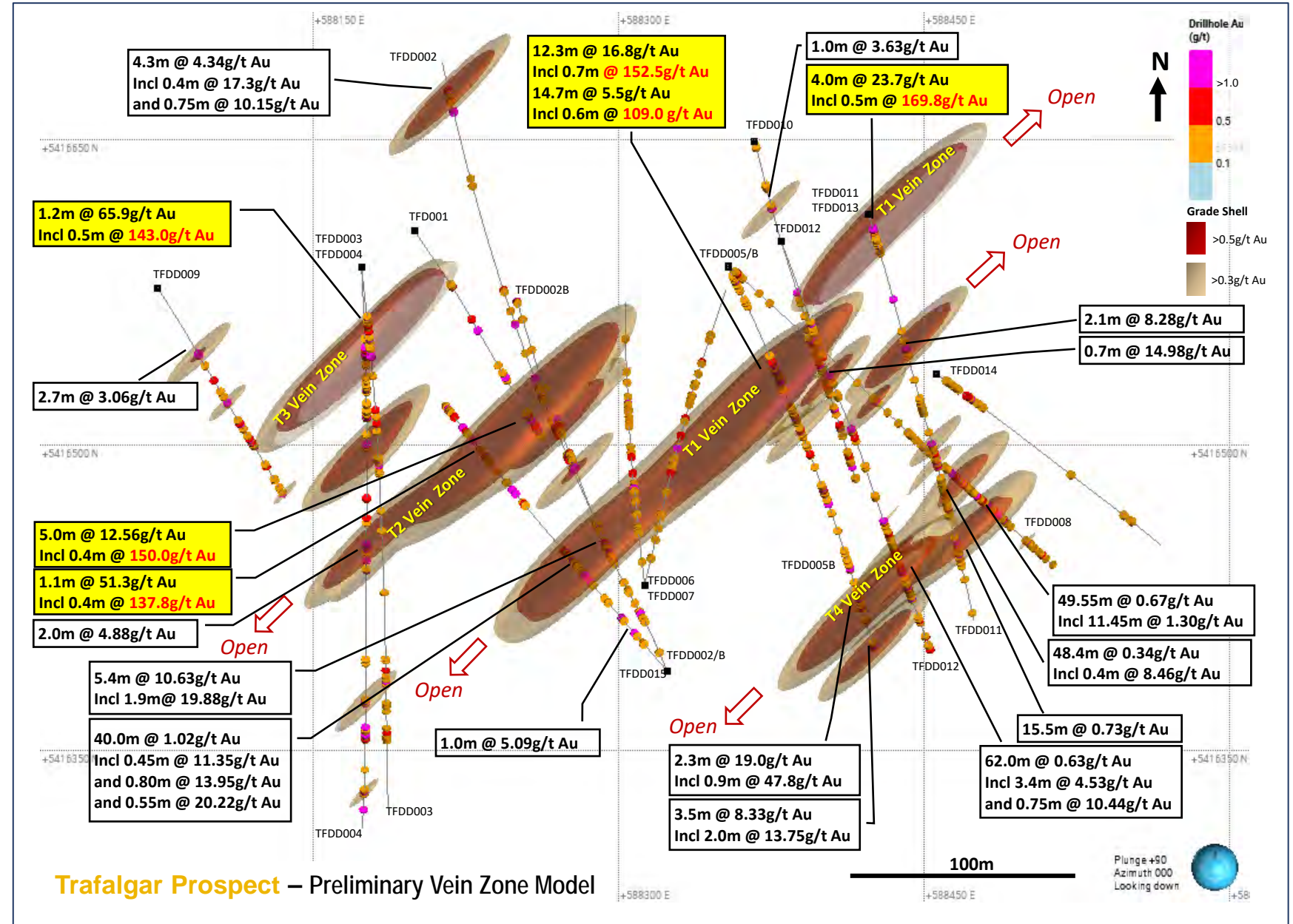
# Golden Ridge Project

## Trafalgar Prospect

- **Gold mineralisation over 400m strike length** identified to date - open along strike and down dip
- Multiple quartz-sulphide vein intervals grading **>100g/t Au**
- Vein Model identifies at least 4 main vein zones – T1, T2, T3 and T4 zones
- **Follow-up drilling** to target extensions to high-grade mineralisation

### References:

- <sup>1</sup>FG1: ASX Ann. 21 Sep 2022    <sup>6</sup>FG1: ASX Ann. 11 May 2023  
<sup>2</sup>FG1: ASX Ann. 24 Oct 2022    <sup>7</sup>FG1 ASX Ann. 18 Jul 2023  
<sup>3</sup>FG1: ASX Ann. 12 Dec 2022    <sup>8</sup>FG1 ASX Ann. 14 Sep 2023  
<sup>4</sup>FG1: ASX Ann. 19 Jan 2023    <sup>9</sup>FG1 ASX Ann. 10 Oct 2023  
<sup>5</sup>FG1: ASX Ann. 14 Feb 2023    <sup>10</sup>FG1 ASX Ann. 22 Nov 2023





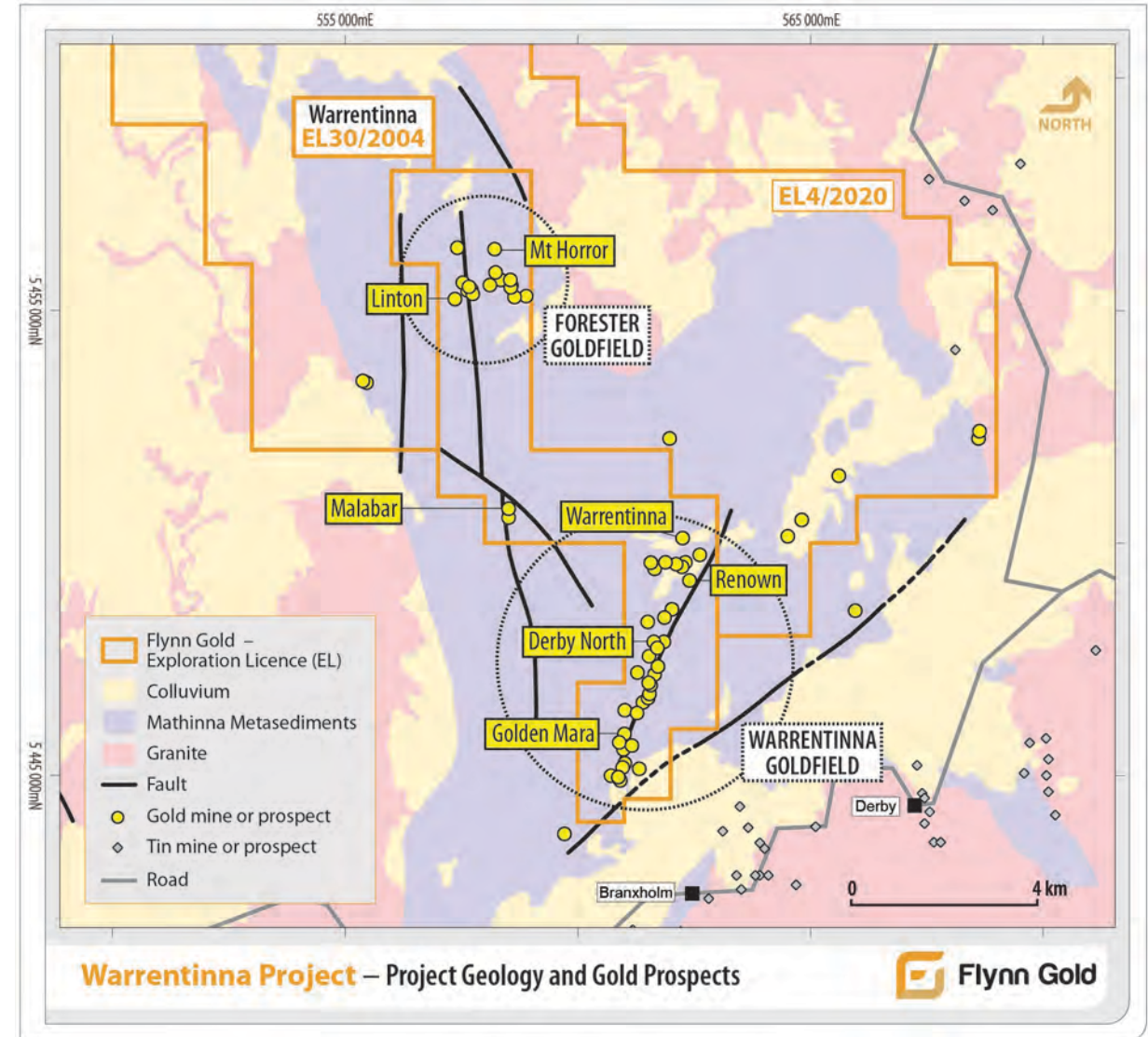
# Warrentinna Gold Project

## Significant new gold targets to complement Flynn's existing NE Tasmania assets

Project purchased from Greatland Gold plc in June 2023

### Warrentinna Goldfield

- Gold mineralisation & old workings **over 6km strike**
- **Golden Mara** mine produced 3,368oz @ 1oz/t (**31g/t Au**)
- Significant shallow gold intersected at **Derby North**:
  - ❑ **26.0m @ 2.3g/t Au** from 5m,
  - ❑ **21.7m @ 3.3g/t Au** from 9.3m,
  - ❑ **11.7m @ 2.8g/t Au** from 115m, and
  - ❑ **43.0m @ 1.5g/t Au** from 10m
- Drilling completed by Flynn at Derby North in Oct 2023
- The drilling program confirmed **highly prospective orogenic-style gold mineralisation** which coincides with historical mine workings
- Early potential for **JORC compliant Mineral Resource** at Derby North with further shallow drilling



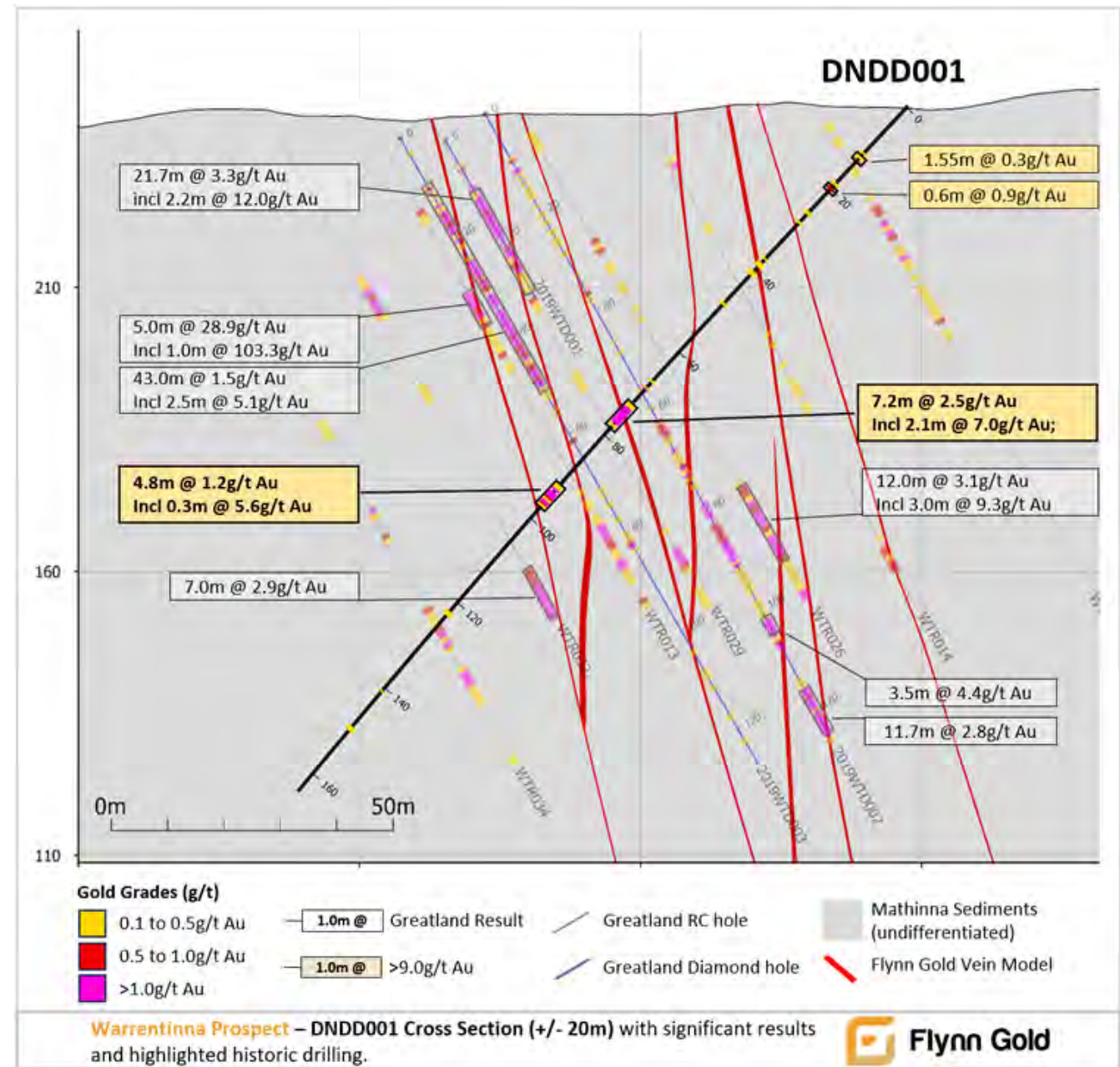
# Warrentinna Gold Project

## Derby North Drilling

- First FG1 Drilling program - 2 drillholes for 357m<sup>1</sup>
- Best intercepts reported in hole DNDD001:
  - **DNDD001:**
    - **7.2m @ 2.5g/t Au** from 68.9m, including
      - **2.1m @ 7.0g/t Au** from 75.1m, and
    - **4.8m @ 1.2g/t Au** from 92.0m, including
      - **0.3m @ 5.6g/t Au** from 94.6m
  - **Multiple zones of auriferous quartz veining** hosted in turbiditic sediments similar to the **Victorian Goldfields**



Photographed core from DNDD001 showing high grade gold intervals in lode style quartz veins from mineralised zone 7.2m @ 2.5g/t Au from 68.9m



Reference: <sup>1</sup>Refer to ASX:FG1 announcement dated 12 January 2024



# Northwest Tasmania

## Strategic holding in a world-class mining region

- Established mining region with **world-class base metal deposits**

### Firetower Project

- Located within eastern parts of **Mount Read Volcanics**
- Multiple targets identified with **gold and critical minerals** potential (cobalt-tungsten, copper, lead/zinc)

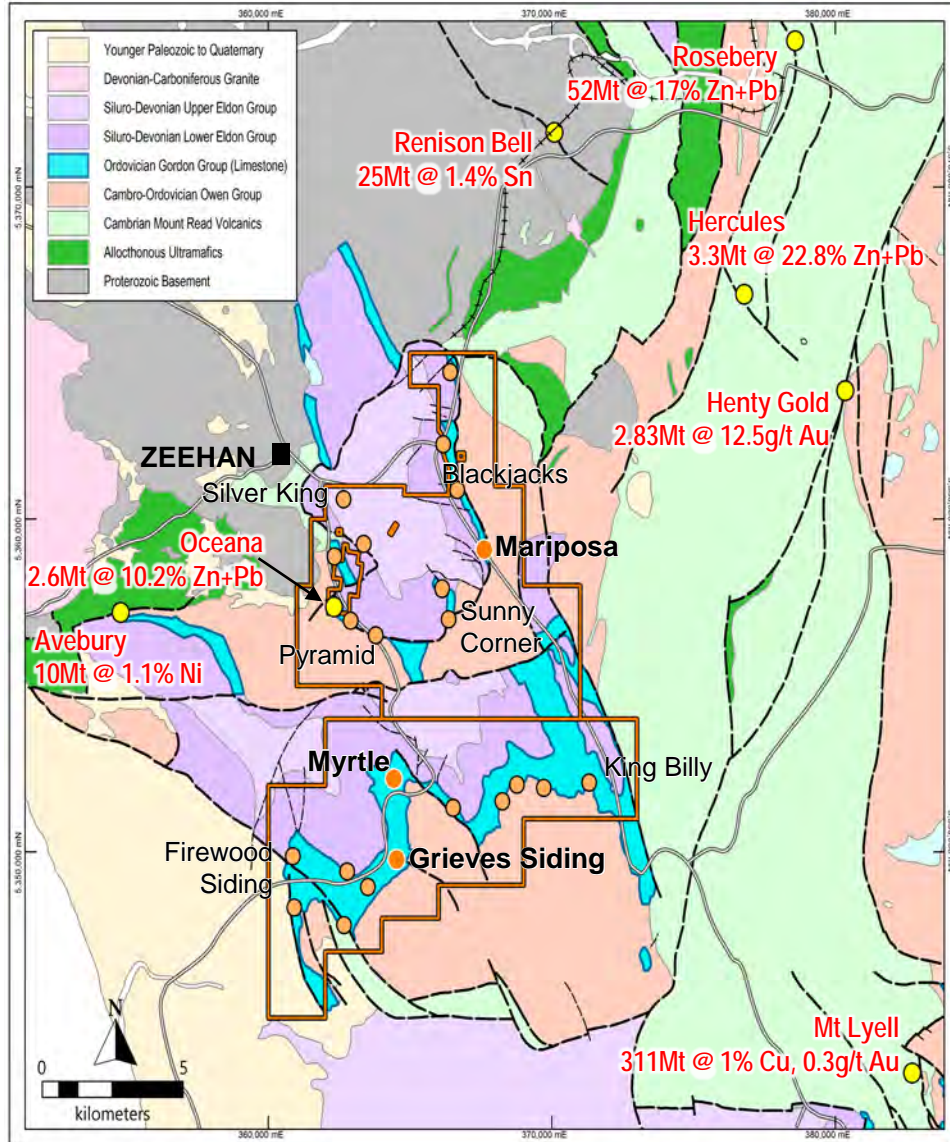
### Henty Zinc/Lead Project

- Strategic tenement position over a highly prospective district-scale carbonate-hosted **Zn-Pb-Ag system**
- Close to infrastructure**, including existing zinc/lead concentrate producer (Rosebery mine)
- Multiple targets identified with **high-grade Zinc/Lead potential**
- Pipeline of **greenfield to resource definition stage** prospects
- Drilling permits in place** for Grieves Siding and Mariposa





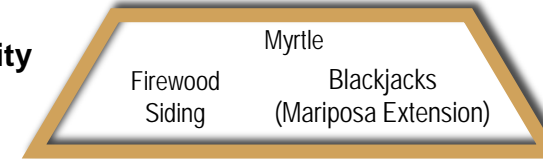
# Henty Zinc/Lead Project



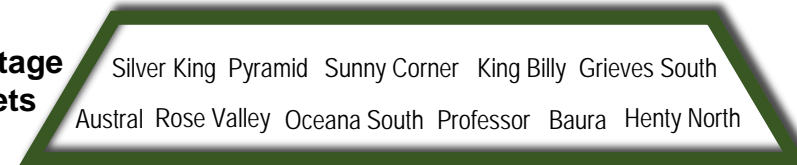
## Resource Definition Targets



## Advanced/Priority Targets



## Early-Stage Targets



*Flynn Gold has walk-up targets at Mariposa and Grieves Siding with drilling permits in place*

## Mariposa:

- Near-Surface stratiform mineralisation drilled over 800m strike (open).
- DM47: **17.9m @ 17.6% Zn+Pb and 101g/t Ag** from 4.1m.
- Resource definition ready.

## Grieves Siding:

- Near-surface stratiform mineralisation drilled over 800m strike (open).
- ZG107: **13.2m @ 11.5% Zn** from 124m, and **8.4m @ 22.4% Zn+Pb** from 154.5m.
- Deep drilling indicates extensive system with large discovery potential.

# Firetower Project

## Advanced Gold plus Critical Minerals Project

Project purchased from Greatland Gold plc in June 2023

### Firetower Prospect

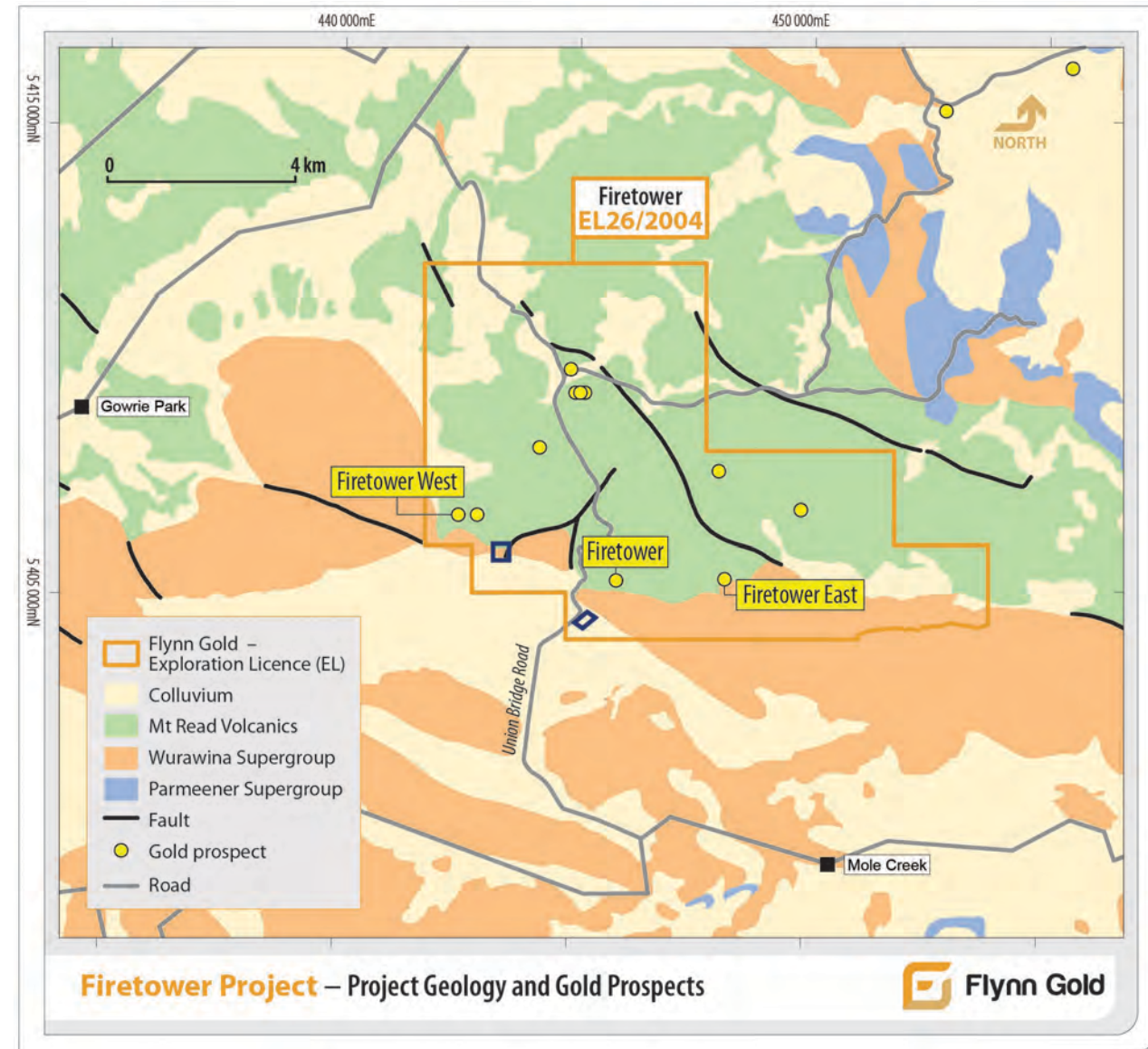
- Previous drilling delineated gold mineralisation over 350m along strike and up to 150m depth, remaining open at depth and along strike
- Significant intercepts include **17m @ 5.37g/t Au** from 7m
- Anomalous **cobalt (up to 0.57% Co)** and **tungsten (up to 0.73% W)** mineralisation associated with the gold has not been systematically evaluated by previous explorers
- Early potential for **JORC compliant Mineral Resource**

### Firetower East Prospect

- **Potential for a VHMS system** with initial drilling intersecting gold, silver, lead and zinc

### Firetower West Prospect

- **1.34% Cu & 2.6g/t Ag** reported in limited drilling



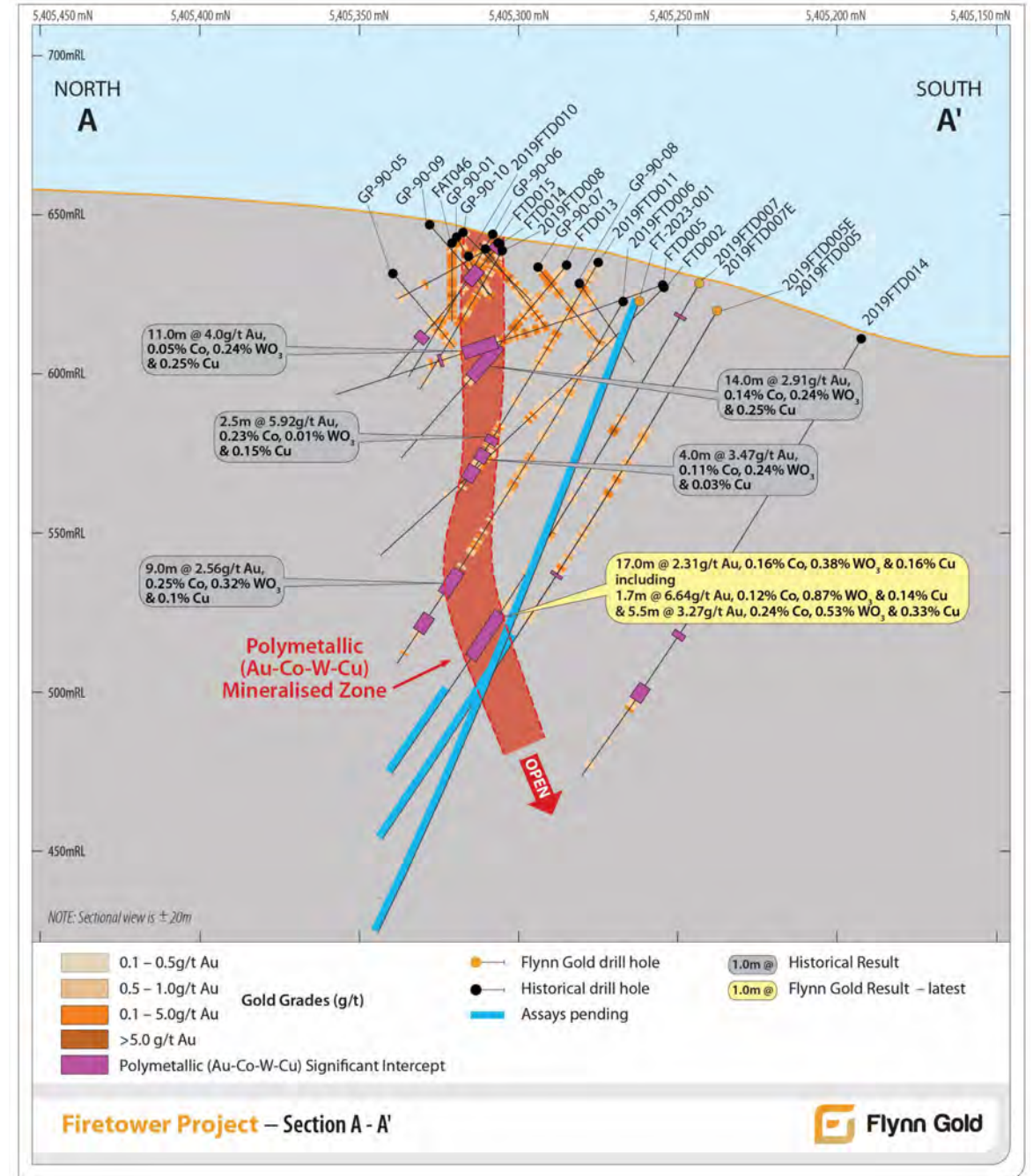
Reference: <sup>1</sup>Refer to ASX:FG1 announcement dated 27 October 2023



# Firetower Project

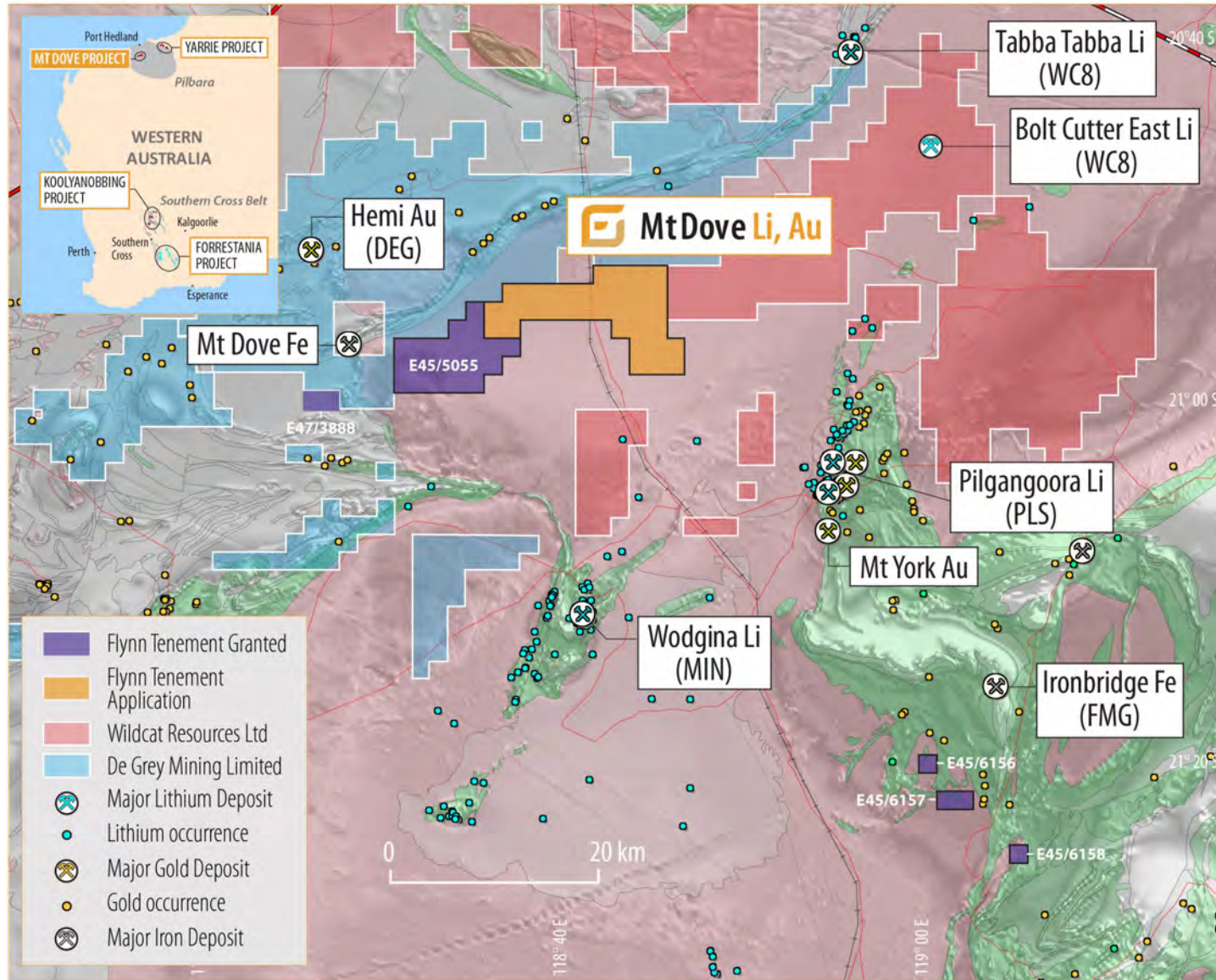
# Firetower Prospect Drilling

- **Maiden diamond drilling program** at the Firetower Project completed with one new drillhole and three diamond tail extensions drilled for 496m<sup>1</sup>
- **First assay results from drilling** confirm potential for significant polymetallic gold and critical minerals mineralisation – **further assays pending**
- **High-grade gold-cobalt-tungsten-copper** mineralisation intersected, including:
  - **2019FTD007E:**
    - **17.0m @ 2.31g/t Au, 0.16% Co, 0.38% WO<sub>3</sub>, 0.16% Cu** from 121.0 -138.0m, including:
      - **1.7m @ 6.64g/t Au, 0.12% Co, 0.87% WO<sub>3</sub>, 0.14% Cu** from 121.0m, and
      - **5.5m @ 3.27g/t Au, 0.24% Co, 0.53% WO<sub>3</sub>, 0.33% Cu** from 132.5m.





# Western Australia - Mt Dove Li-Au Project



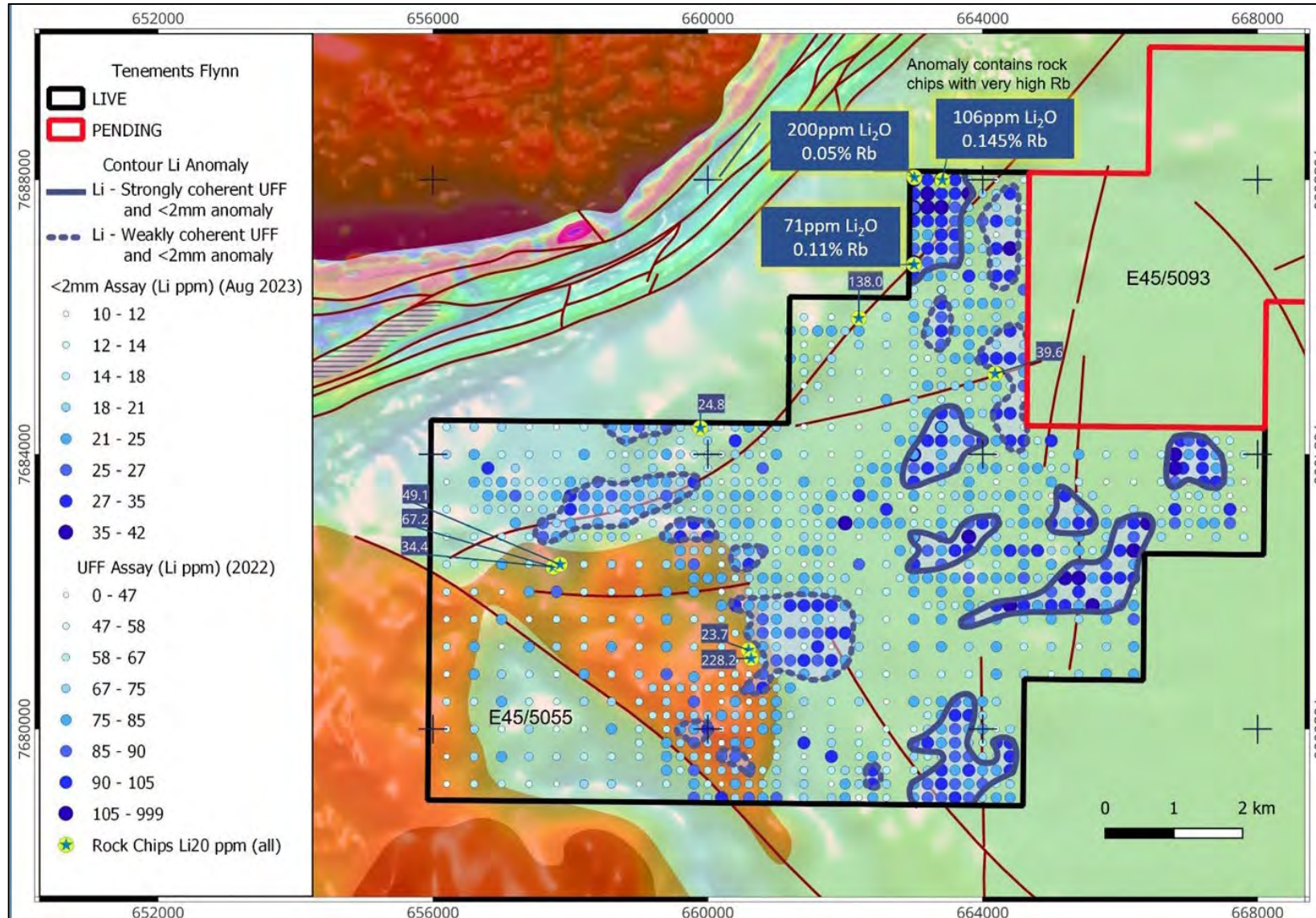
Mt Dove Project is located in the Pilbara region of Western Australia and is near the large lithium pegmatite deposits of:

- Pilgangoora (PLS)
- Wodgina (Albemarle/MIN JV);
- Tappa Tappa (WC8) and the large gold discovery at Hemi (DEG)

*Flynn Gold holds a substantial land position immediately adjacent to the significant land holdings of De Grey Mining Ltd and Wildcat Resources Ltd, both companies being very active drilling out gold and lithium resources.*



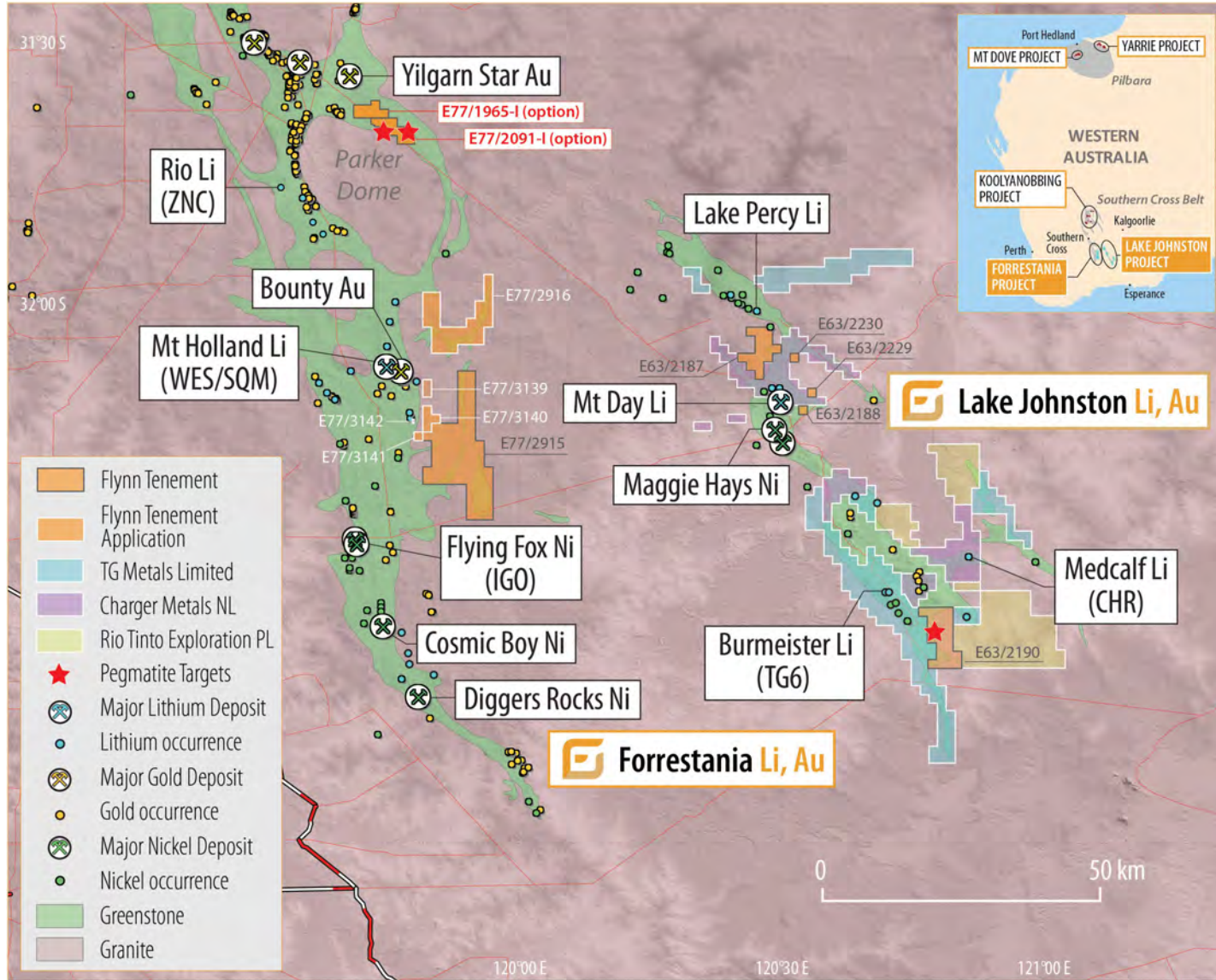
# Western Australia - Mt Dove Li-Au Project



- Soil sampling programs at Mt Dove have identified Lithium and Gold anomalies
- **Seven high priority lithium anomalies confirmed on E45/5055<sup>1</sup>**
- Coherent lithium anomalies extend up to **3,100m length** within predominantly shallow transported cover sequence comprising aeolian sand
- Limited outcrop rock chip samples anomalous in lithium (up to 228ppm Li<sub>2</sub>O) and associated pathfinder elements (including up to 0.145% Rb)
- Shallow aircore drilling of lithium anomalies is the next step in the exploration program



# Western Australia - Yilgarn Li-Au Projects



Substantial lithium-gold projects located in the Southern Cross province of the Yilgarn Craton

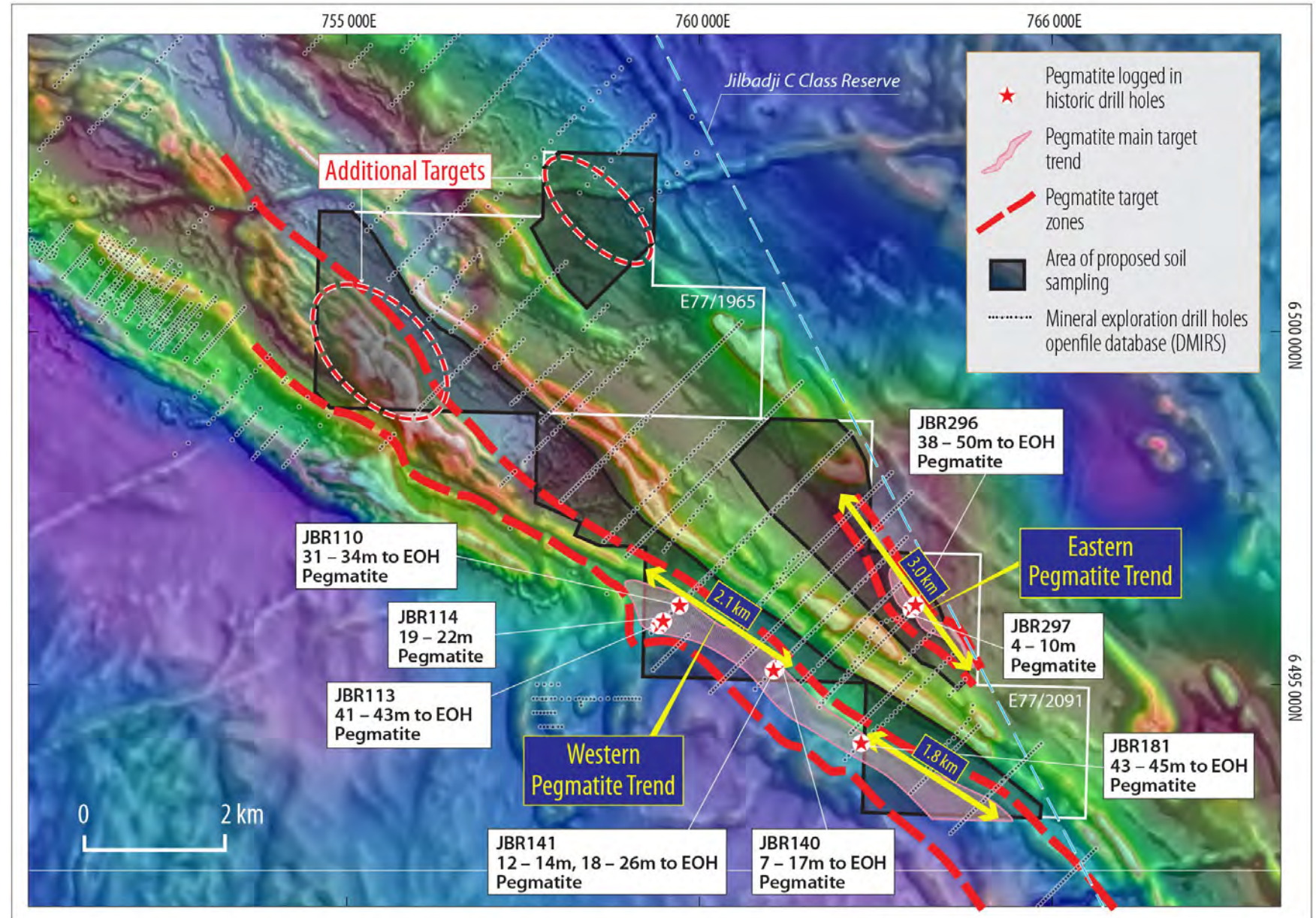
- **Forrestania Project** is located:
  - <10km E of **Mt Holland** Lithium deposit (Wesfarmers/SQM JV)
  - ~20km NE of high-grade **Flying Fox** Nickel deposit (IGO Limited)
- **Lake Johnston Project** is located in an exciting new lithium province:
  - 7km SE of **Burmeister** Lithium Discovery (TG Metals Limited)
  - 10 km S of **Medcalf** Lithium Deposit (Charger Metals NL)
- **Parker Dome Project** is a new acquisition – 1 year (to Dec 2024) Option<sup>1</sup> to acquire two exploration licences covering highly prospective greenstone belt



# Western Australia - Parker Dome Li-Au Project

- Logged pegmatites outline **Western and Eastern Pegmatite Trends** over several kilometres with very limited drilling along strike
- Field work has confirmed Western Pegmatite Trend intersected across **zones up to 500m wide at depth of 20-40 metres**
- **Additional targets identified** based on the geology and geophysics
- **~700 soil samples collected** in Dec 2023<sup>1</sup> – assays pending

Reference: <sup>1</sup>Refer to ASX:FG1 announcement dated 15 December 2023





# Investment Highlights

- Focused on three **high-grade gold projects** in Tasmania (Golden Ridge, Warrentinna and Firetower)
- Golden Ridge Project
  - ❑ High-grade gold discovery at Trafalgar open in all directions with significant follow-up drilling planned
  - ❑ Excellent potential for additional high-grade gold deposits along an 8km trend
- Significant portfolio of battery metals projects in WA – excellent addresses near world class deposits
- Experienced Board, Management and Technical team

*Golden Ridge*







## Neil Marston

**Managing Director & Chief Executive Officer**

+61 3 9692 7222

[neil@flynnngold.com.au](mailto:neil@flynnngold.com.au)

[www.flynnngold.com.au](http://www.flynnngold.com.au)

## Ben Creagh

**Media & Investor Relations**

+61 (0) 417 464 233

[benc@nwrcommunications.com.au](mailto:benc@nwrcommunications.com.au)



**For more information, please contact us**



**Flynn Gold**

ASX: FG1