

SOUTHERN CROSS
GOLD

Sunday Creek - High-grade Gold-Antimony Discovery in Clonbinane, Victoria

Kenneth Bush, Exploration Manager



Foundation Member



Important Notice and Disclaimer

Overview

This presentation (“this Presentation”) has been prepared by Southern Cross Gold Ltd [ACN 652166795] (“SXG” or the “Company”) and is dated 28 May 2024.

Summary information

This Presentation contains summary information about the current and proposed activities of SXG as at the date of this Presentation. The information in this Presentation is of a general nature and does not purport to be complete. This Presentation does not purport to contain all the information that an investor should consider when making an investment decision nor does it contain all the information which would be required in a disclosure document or prospectus prepared in accordance with the requirements of the Corporations Act. It should be read in conjunction with the Company’s other periodic and continuous disclosure announcements lodged with the ASX, which are available at the ASX website www.asx.com.au under the code “SXG”. Neither SXG nor its directors, employees or advisers accept any responsibility to inform recipients specifically of any matter arising or coming to its attention after the date of this Presentation. Recipients should monitor SXG’s announcements to ASX, which can be obtained from ASX website as referred to above.

Investment risk

An investment in SXG’s Shares is subject to investment risks and other known and unknown risks, some of which are beyond the control of the Company. SXG, its directors, employees or advisers do not guarantee any particular rate of return or the performance of SXG, nor does it guarantee the repayment of capital or investments from or in SXG or any particular tax treatment.

No Offer

This Presentation is for information purposes only. It is not a prospectus, disclosure document, product disclosure statement or other offering document under Australian law or any other law (and is not approved by or registered with any regulator). The Presentation is not and should not be considered an offer or an invitation to acquire shares or any other securities or financial products. This Presentation may not be released or distributed in the United States. This Presentation does not constitute an offer to sell, or a solicitation of an offer to buy, securities in the United States or in any other jurisdiction in which such an offer would be illegal. The New Shares have not been, and will not be, registered under the U.S. Securities Act of 1933, as amended (the “U.S. Securities Act”) or the securities laws of any state or other jurisdiction of the United States. The distribution of this Presentation in other jurisdictions outside Australia may also be restricted by law and any such restrictions should be observed. Any failure to comply with such restrictions may constitute a violation of applicable securities laws.

Not financial product advice

This Presentation does not constitute financial product or investment advice (nor tax, accounting or legal advice) nor is it a recommendation to acquire shares and does not and will not form any part of any contract for the acquisition of shares. This Presentation has been prepared without taking into account the objectives, financial situation or needs of any particular investor.

Before making an investment decision, prospective investors should consider the appropriateness of the information having regard to their own objectives, financial situation and needs and seek appropriate advice, including financial, legal and taxation advice appropriate to their jurisdiction. SXG is not licensed to provide financial product advice in respect of SXG shares or any other investment.

Future performance

This Presentation may contain forward looking statements, opinions or estimates. Any forward looking statements, opinions or estimates contained in this Presentation are not guarantees or predictions of future performance and involve known and unknown risks and uncertainties and other factors, many of which are beyond the control of SXG, and may involve significant elements of subjective judgement and assumptions and contingencies as to future events which may or may not be correct which are subject to change without notice, as are statement about market and industry trends, which are based on interpretations of current market conditions. Those statements reflect views only as at the date of this Presentation. The actual results may differ materially from anticipated results, performance of achievement expressed, projected or implied by these forward-looking statements.

While SXG believes the statements in the Presentation are reasonable, neither SXG nor any other person gives any assurance or guarantee that the occurrence of the events expressed or implied in the Presentation will actually occur and investors are cautioned not to place undue reliance on those statements. There can be no assurance that actual outcomes will not differ materially from these forward-looking statements. A number of factors could cause actual results or performance to differ materially from the forward-looking statements, including the risk factors set out in this Presentation. Investors should consider the forward-looking statements contained in this Presentation in light of those disclosures. The forward-looking statements are based on information available to SXG as at the date of this Presentation.

Important Notice and Disclaimer

Competent Persons Statement

Information in this presentation that relates to new exploration results contained in this report is based on information compiled by Michael Hudson, a Fellow of the Australasian Institute of Mining and Metallurgy. He is MD for Southern Cross Gold Ltd. He has sufficient experience which is relevant to the style of mineralisation and types of deposits under consideration and to the activity being undertaken to qualify as a Competent Person as defined in the 2012 edition of the Australasian Code for Reporting of Exploration Results, Mineral Resources and Ore Reserves (the JORC Code). Michael Hudson has consented to the inclusion in this report of the matters based on this information in the form and context in which it appears.

Certain information in this announcement that relates to prior exploration results is extracted from the Independent Geologist's Report dated 16 March 2022 which was issued with the consent of the Competent Person, Mr Terry C. Lees. The report is included in the Company's prospectus dated 17 March 2022 which was released as an announcement to ASX on 12 May 2022 and is available at www2.asx.com.au under code "SXG". The Company confirms that it is not aware of any new information or data that materially affects the information related to exploration results included in the original market announcement. The Company confirms that the form and context of the Competent Persons' findings in relation to the report have not been materially modified from the original market announcement.

The Company confirms that it is not aware of any new information or data that materially affects the information included in the original document/announcement and the Company confirms that the form and context in which the Competent Person's findings are presented have not materially modified from the original market announcement.

Certain information in this announcement also relates to prior exploration results, are extracted from the following announcements, which are available to view on www.southerncrossgold.com.au:

21 November, 2022 [SDDSC050](#), 14 December, 2022 [SDDSC050](#), 28 February, 2023 [SDDSC053](#), 1 May, 2023 [SDDSC059](#), 16 May, 2023 [SDDSC064](#), 1 June, 2023 [SDDSC066](#), 23 August, 2023 [SDDSC078](#), 5 September, 2023 [SDDSC077B](#), 12 October, 2023 [SDDL003](#) & 4, 23 October, 2023 [SDDSC082](#), 9 November, 2023 [SDDSC091](#), 14 December, 2023 [SDDSC092](#), 8 February, 2024 [SDDSC094A, 100 & 104](#), 27 February, 2024 [SDDSC108A](#), 5 March, 2024 [SDDSC107](#), 27 May, 2024 [SDDSC115A & 117](#).

3D Vrify Presentation

This presentation is a static 2D simplification of the presentation made on the day.

The 3D Vrify presentation made on the day can be found here:

<https://vrify.com/decks/16016>

Acknowledgements

**I wish to thank all current and past workers who have progressively contributed to the rediscovery of Sunday Creek Goldfield.
It takes a team to raise a discovery!**

Most recently in particular we would like to thank Michael Hudson, Lisa Gibbons, Angela Lorrigan, Terry Lees, Zac Turschwell, Claudia Bowman, Andrew Gordon, Angus McKay, Thomas Fromhold, Lisa Andersson, Marcus Tomkinson, Roland Hill, Cael Gniel, Craig Brown, Matthew Coad, David Henstridge, Tom Eadie, Georgina Carnegie and Henry Rech.

Aim to Create the Highest Margin Gold Business Globally



Exceptional Hit Rate

Sunday Creek compares favorably with global leading hit rates for this stage of the project's development

38/48 individual intersections >100/>50 AuEq g/t m ("AuEq g/t x width in m")

119 drill holes for 51,189m reported to date

47 vein sets wireframed within main drill area



3 Clear Objectives

Drilling plan has three clear objectives that will have the largest emphasis over the next six months

- 1 Demonstrate **Grade**
- 2 Demonstrate **Volume**
- 3 Demonstrate **Scale**



4 diamond drill rigs operating at site

Aim to increase capacity with additional rig per quarter



News flow continuous



Funded with permits

\$13.5 m
Fully funded and permitted

133.3 ha of freehold land, three properties



Team Structure



Locally based staff

Living in the communities in which we work



Geology Team

Small, but experienced team
Diverse range of Victorian deposits including, Fosterville,
Costerfield, Ballarat & Stawell Mines



Exploration and Mining History



History

- 1850s - Alluvial mining
- 1860s - Surface mining to 30m
- 1880s - Shaft mining to 100m, 1890s to 180m
- Early 1900s – cyanide
- WW1 – Open by Imperial munitions act - antimony
- 1960s Eastern Prospectors – few drill holes
- 1980s CRA/BHP
- 1986 – mid 1990's, Ausminde - 29 RC drill holes totalling 960 metres;
- 2008 - Beadell Resources 30 RC holes with 7 diamond drill tails – oxide focus

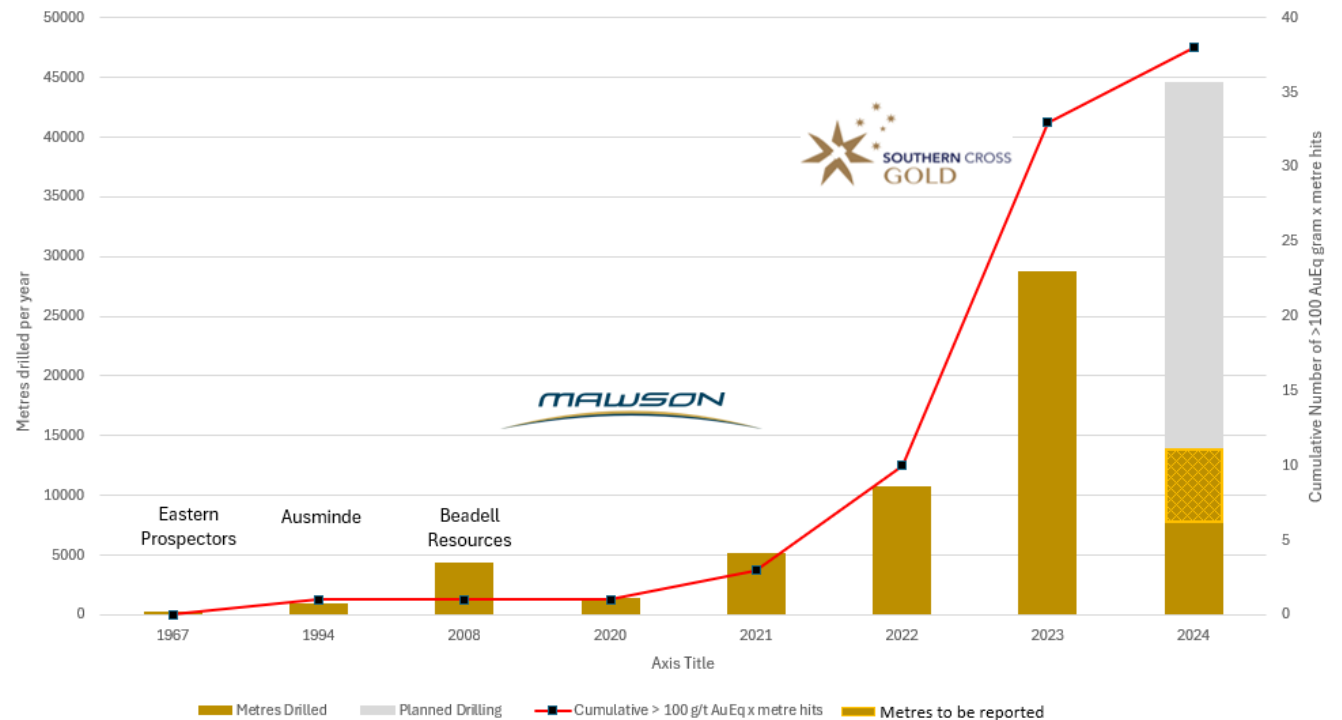


Exploration

- Exploration has accelerated year-on-year
- 2021 was the first year with an individual +100 g/t Au assay interval
- 2023 included 28 individual Au assays +100 g/t Au and 6 individual Au assays +1,000 g/t Au.
- 2024 to date has 11 individual Au assays +100 g/t Au from 8 drillholes started in 2024 with an additional 11 drillholes being processed or currently drilling – 60 km drilling planned over next year



The Golden Dyke Mine



Database Analysis: Grade vs Width

All of the 5 best intersections on the project have been drilled recently

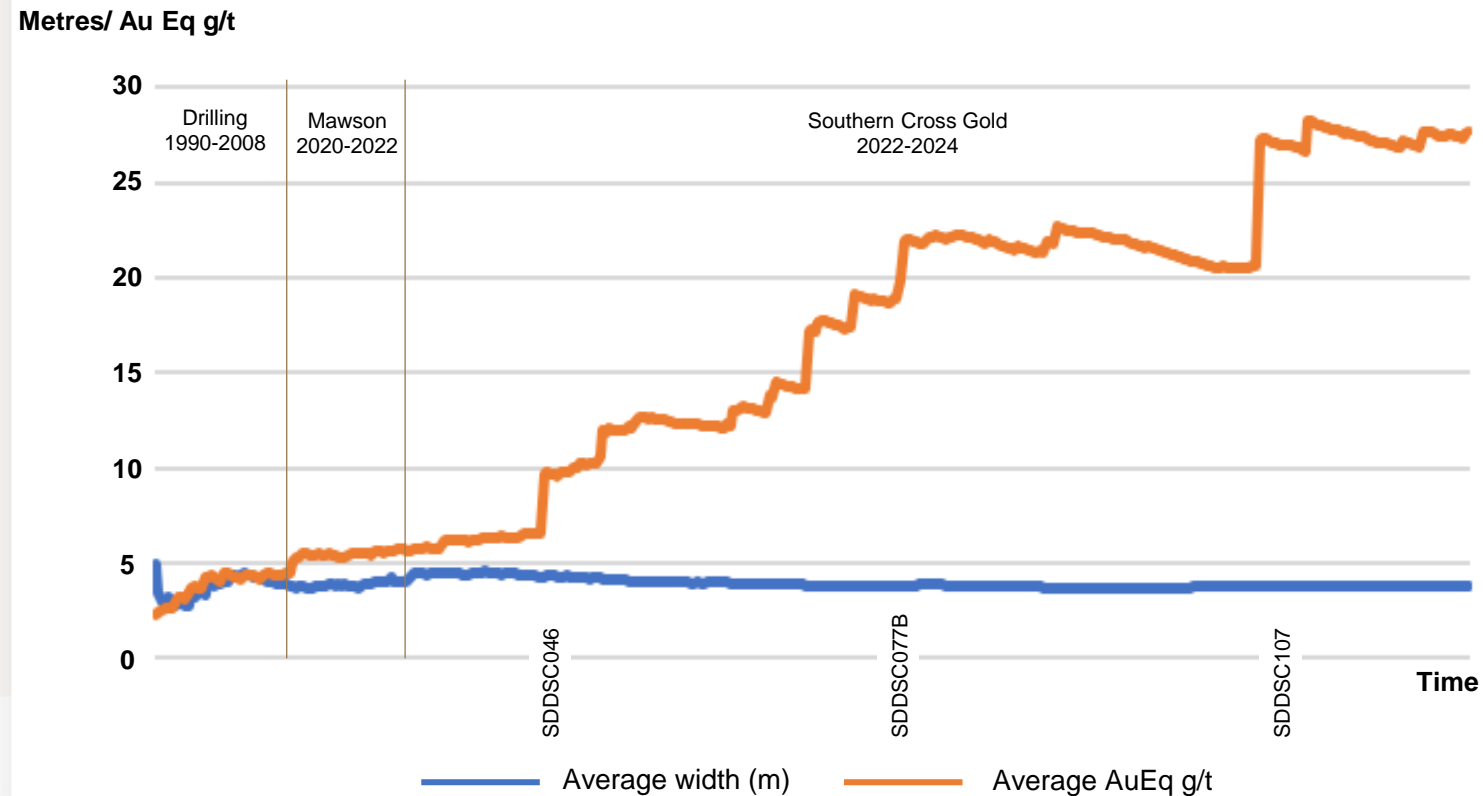
Top 10 intersections at Sunday Creek:

Rank	Date	Hole-ID	From (m)	To (m)	Length (m)	Au g/t	Sb%	AuEq g/t	AuEq gtm
1	5-Mar-24	SDDSC107	684.3	685.4	1.0	2,318.4	0.3	2,318.8	2,389
2	5-Sep-23	SDDSC077B	737.1	740.7	3.6	391.9	0.8	393.2	1424
3	9-Nov-23	SDDSC091	430.0	450.0	20.0	62.7	0.5	63.6	1274
4	14-Dec-23	SDDSC092	681.6	684.9	3.3	267.8	1.8	270.6	889
5	23-Oct-23	SDDSC082	417.4	419.0	1.6	500.3	0.1	500.5	801
6	23-Oct-23	SDDSC082	413.6	415.4	1.7	230.6	9.9	246.2	429
7	5-Mar-24	SDDSC107	566.9	576.0	9.1	39.1	0.6	40.0	368
8	4-Oct-22	SDDSC046	187.5	201.8	14.3	20.5	2.6	24.6	363
9	23-Oct-23	SDDSC082	588.0	592.3	4.3	71.5	0.4	72.2	307
10	1-Jun-23	SDDSC066	543.5	545.2	1.7	147.1	13.7	168.7	290

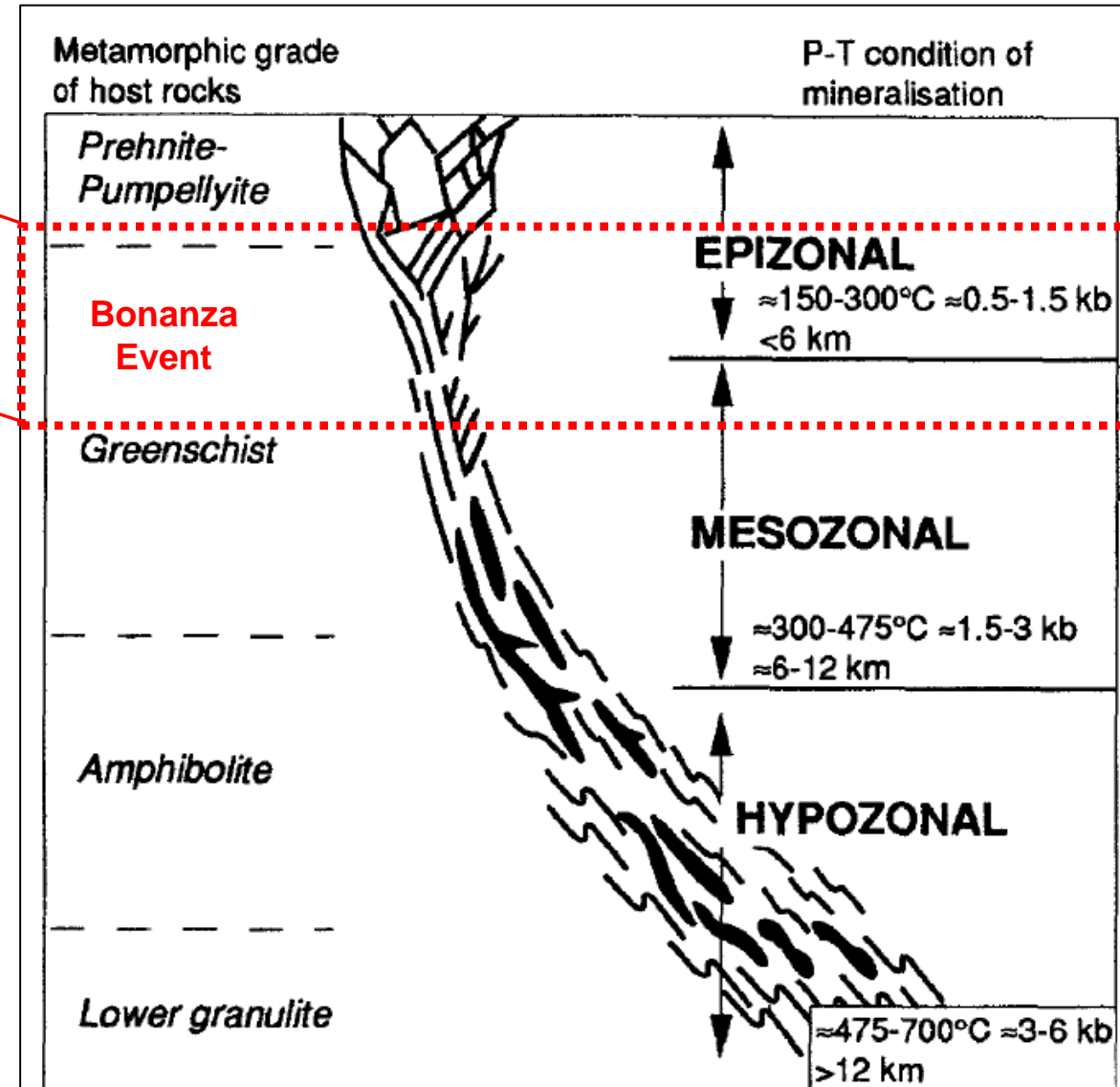
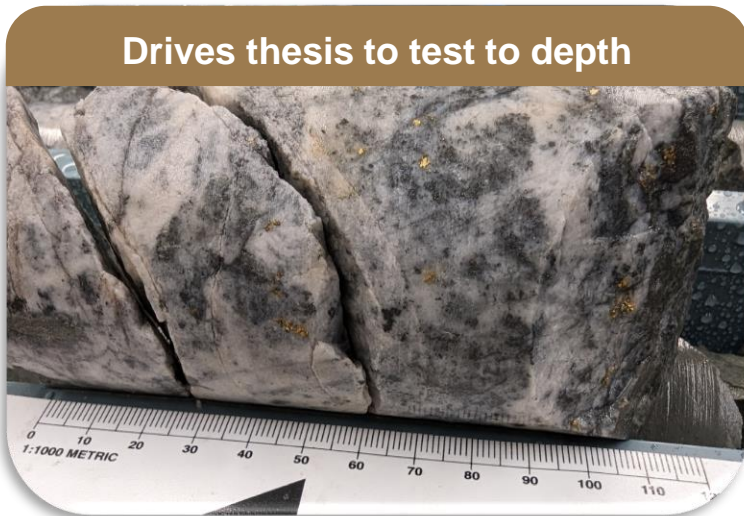
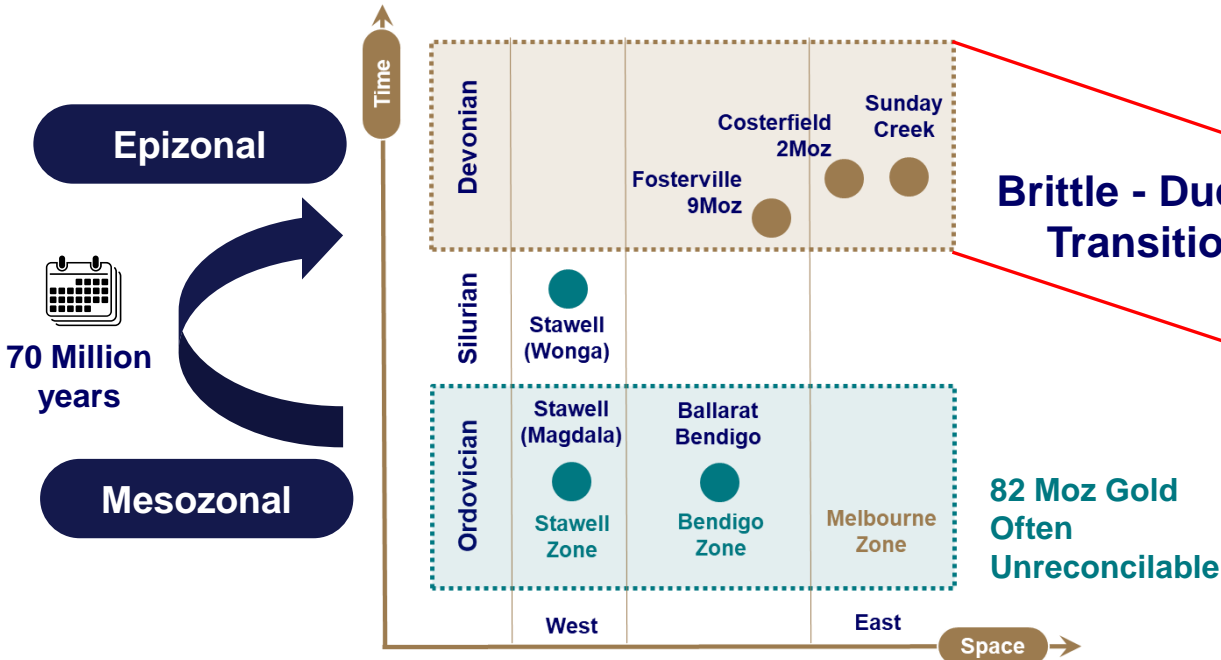


SDDSC107 from 684.7 m (within assayed interval 1.0 m @ 2319 g/t AuEq (2318.4 g/t Au, 0.3 % Sb) from 684.32 m to 685.35 m) showing cut core, with stibnite and quartz-carbonate veining with fine, disseminated frequent visible gold.

AuEq g/t & Width (m) (2 m @ 1.0 g/t Au Lower Cut) vs time



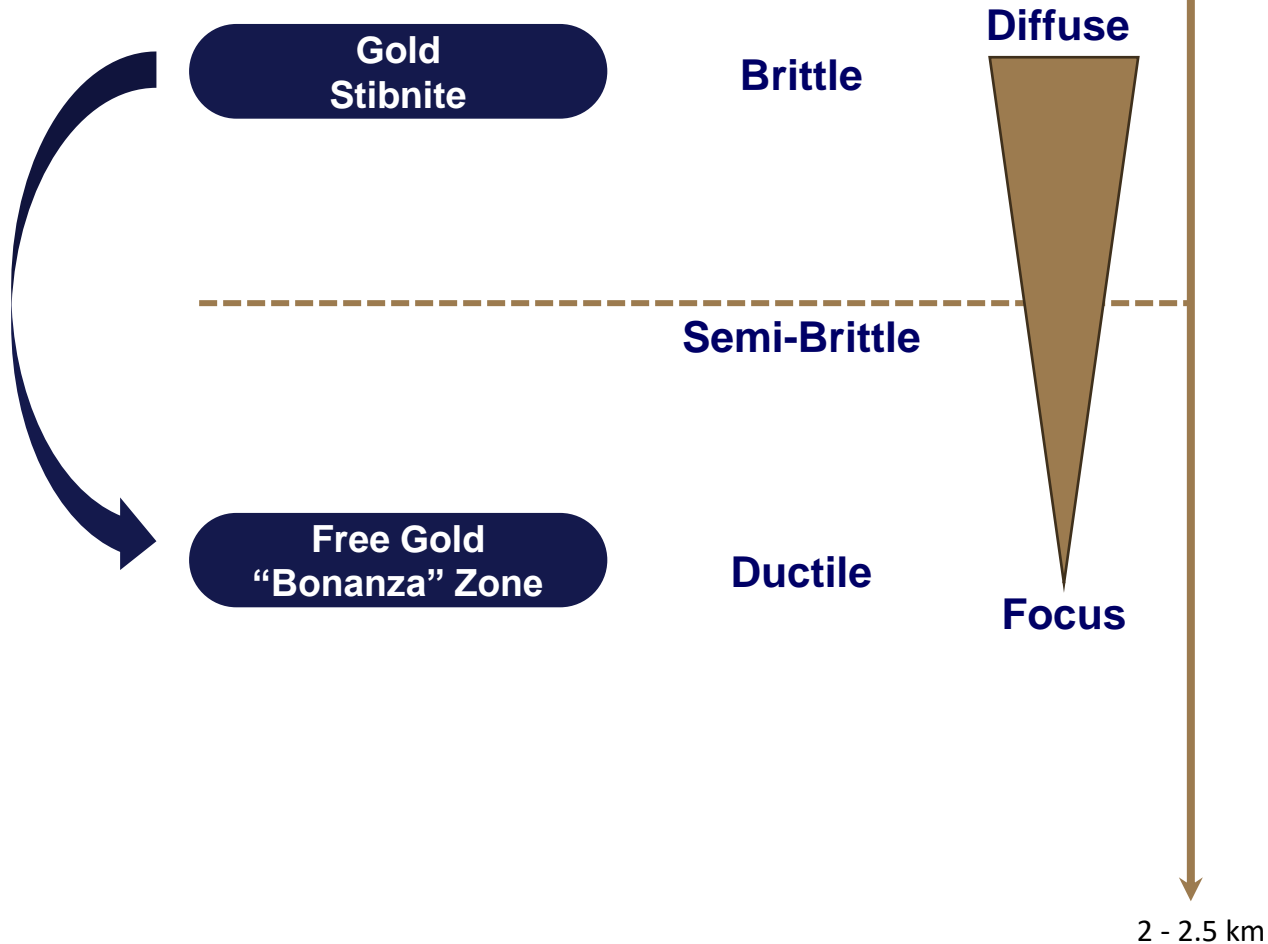
Victoria a Gift That Keeps on Giving



Gebre-Mariam et al., 1995

Brittle to Ductile Transition

Our Focus

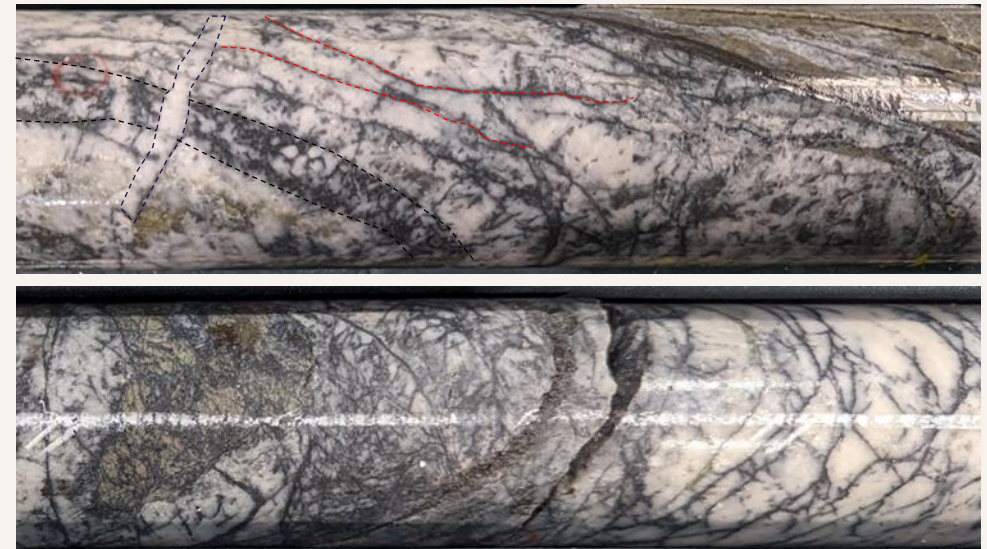


Brittle Features



Quartz-carbonate-stibnite extension veins in altered dyke

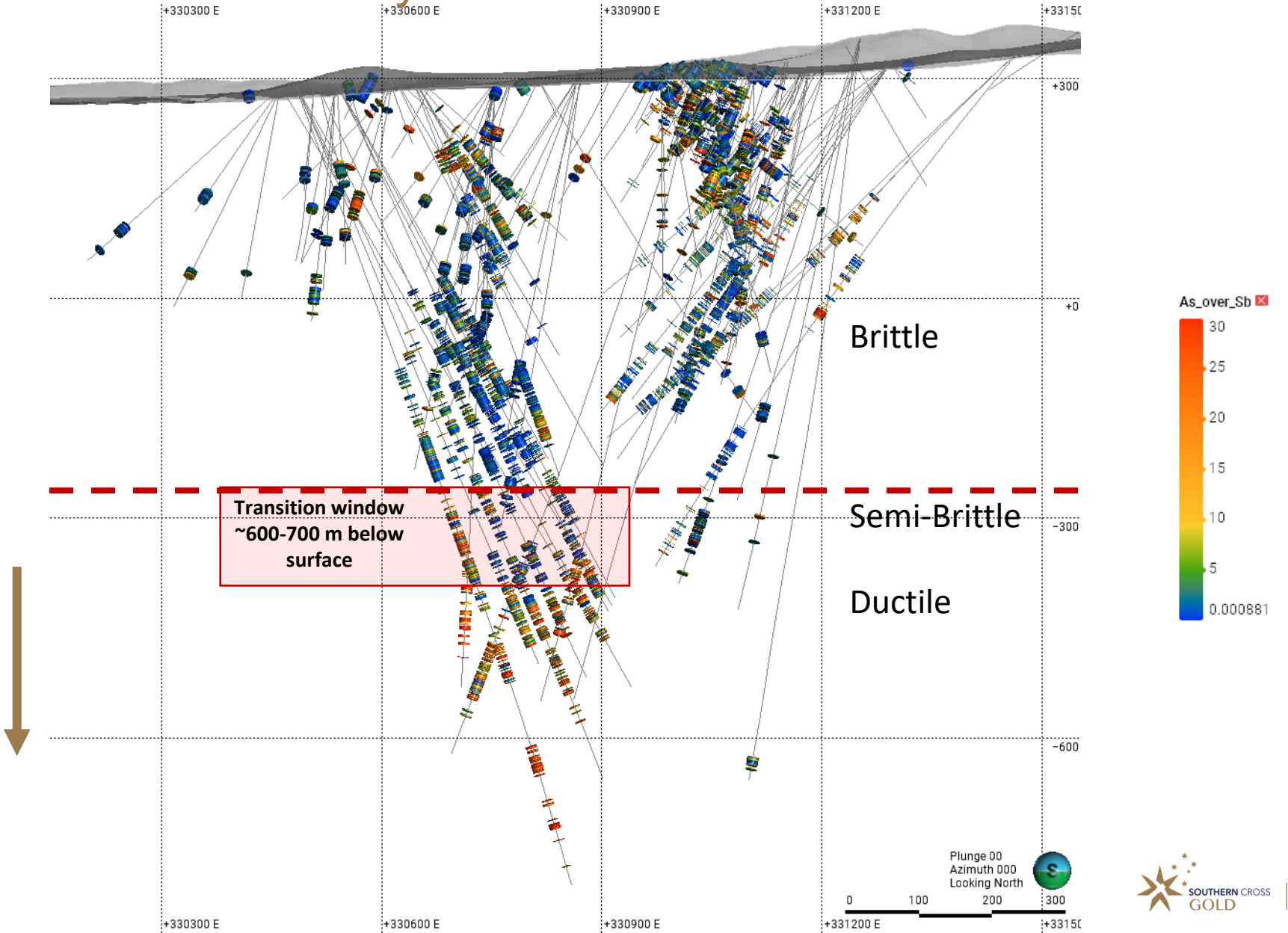
Ductile Features



Brittle to Ductile Transition at Sunday Creek

Dominant brittle features

Decreasing Sb
Increased observation of
Fibrous Sulphosalts



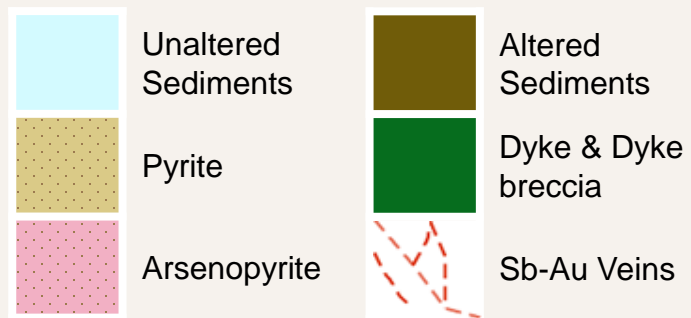
Schematic Plan View Main Drill Area – The Golden Ladder

● Ladder rails extend over 10km of strike. Core area drilled over 1km

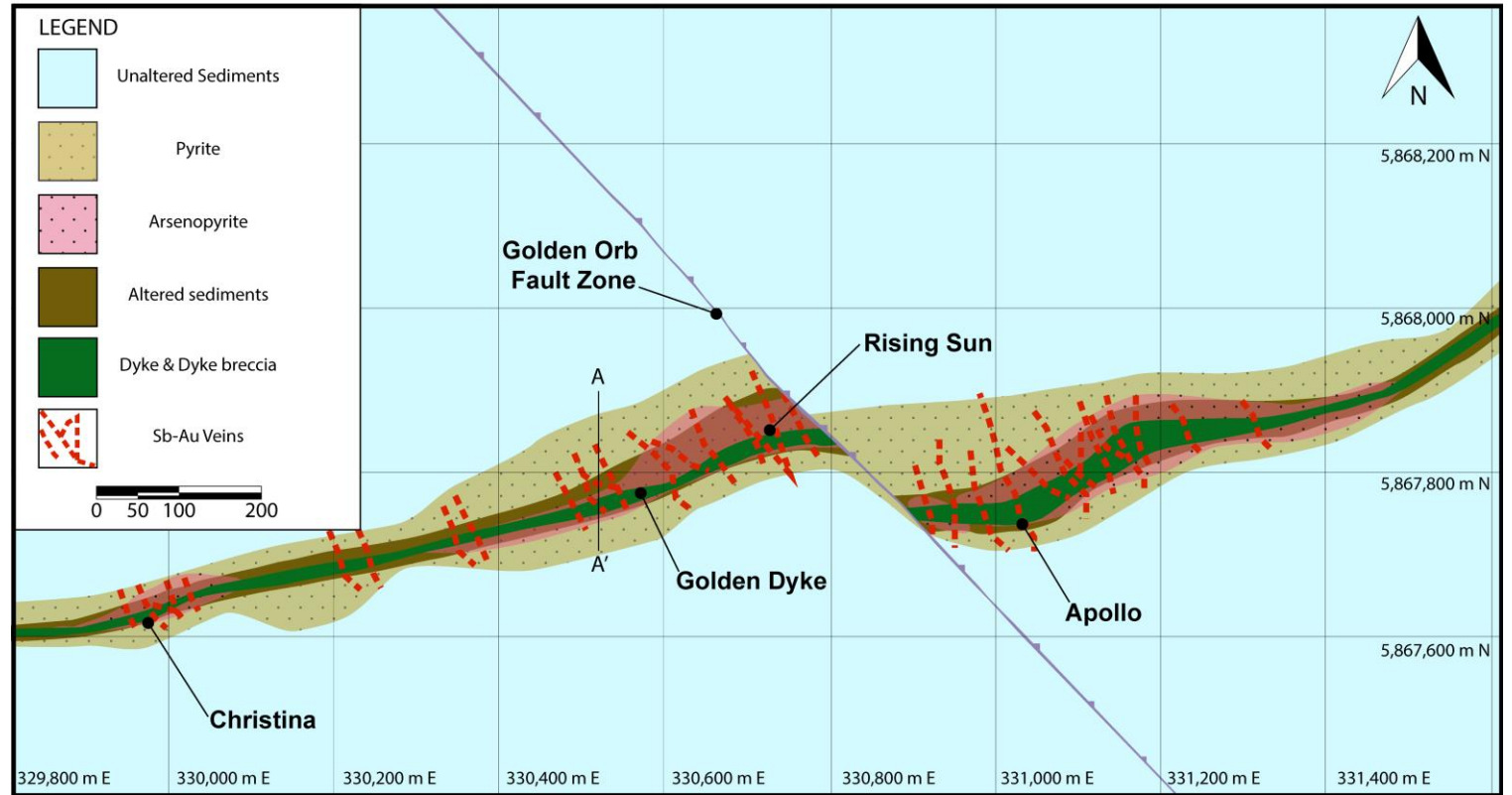
● “Rungs” extend from surface to 1km depth, Each “rung” 20-100m long, 2-30m wide

● 47 “rungs” identified to date

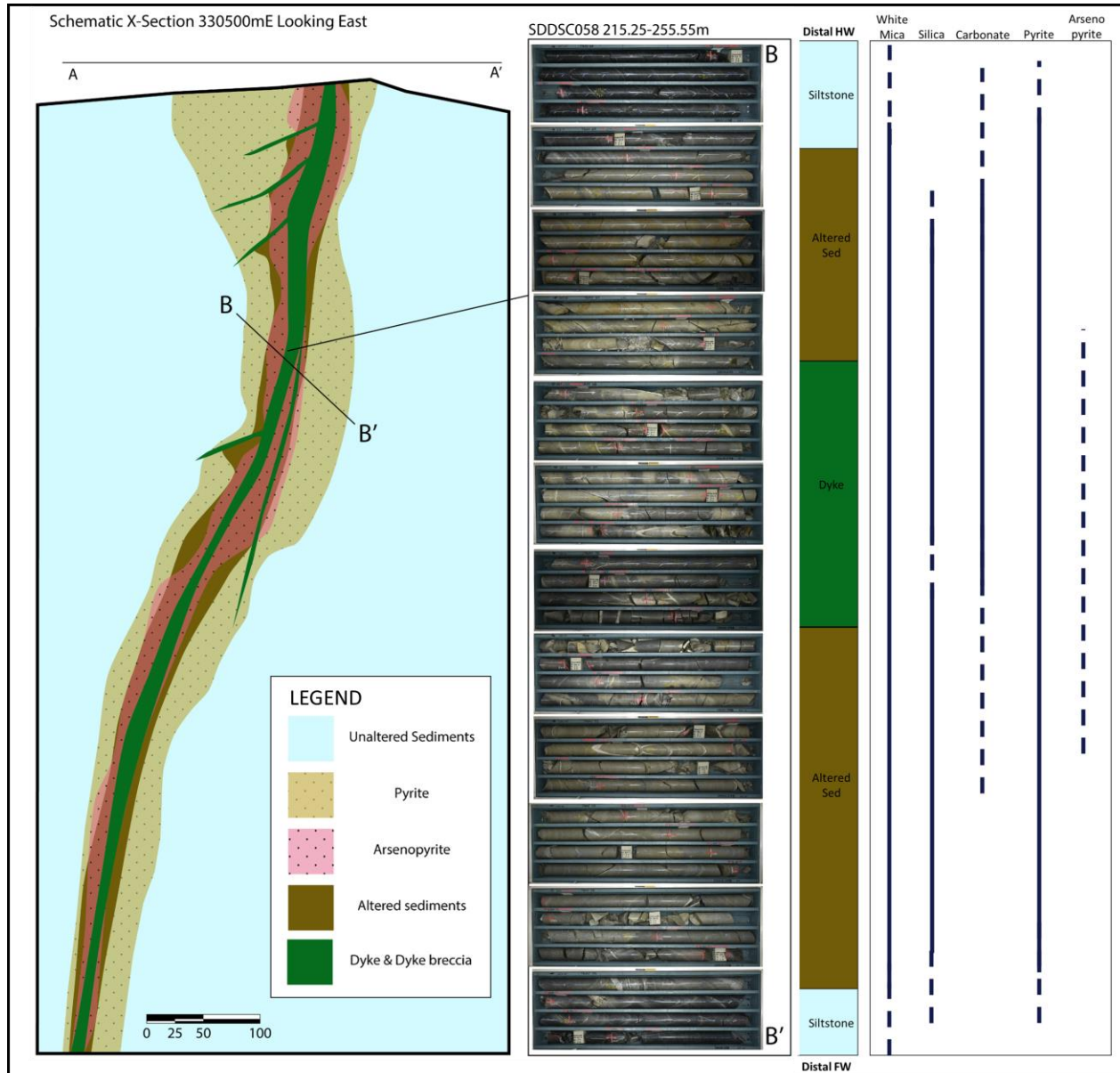
● Continuity informed by structural data, geostats (CV<2), geological likeness, predictability and 50 yrs mining



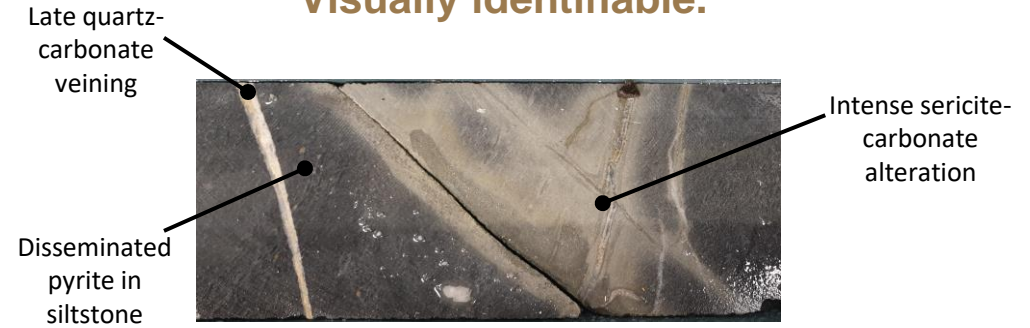
Schematic Plan View



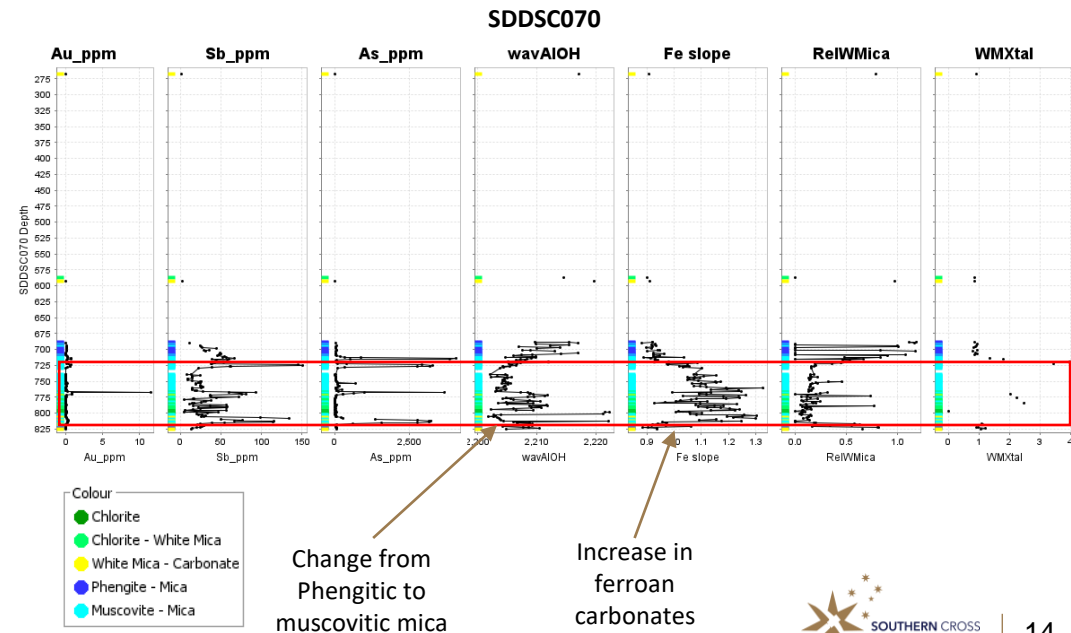
Schematic Cross Section Through Host Looking East



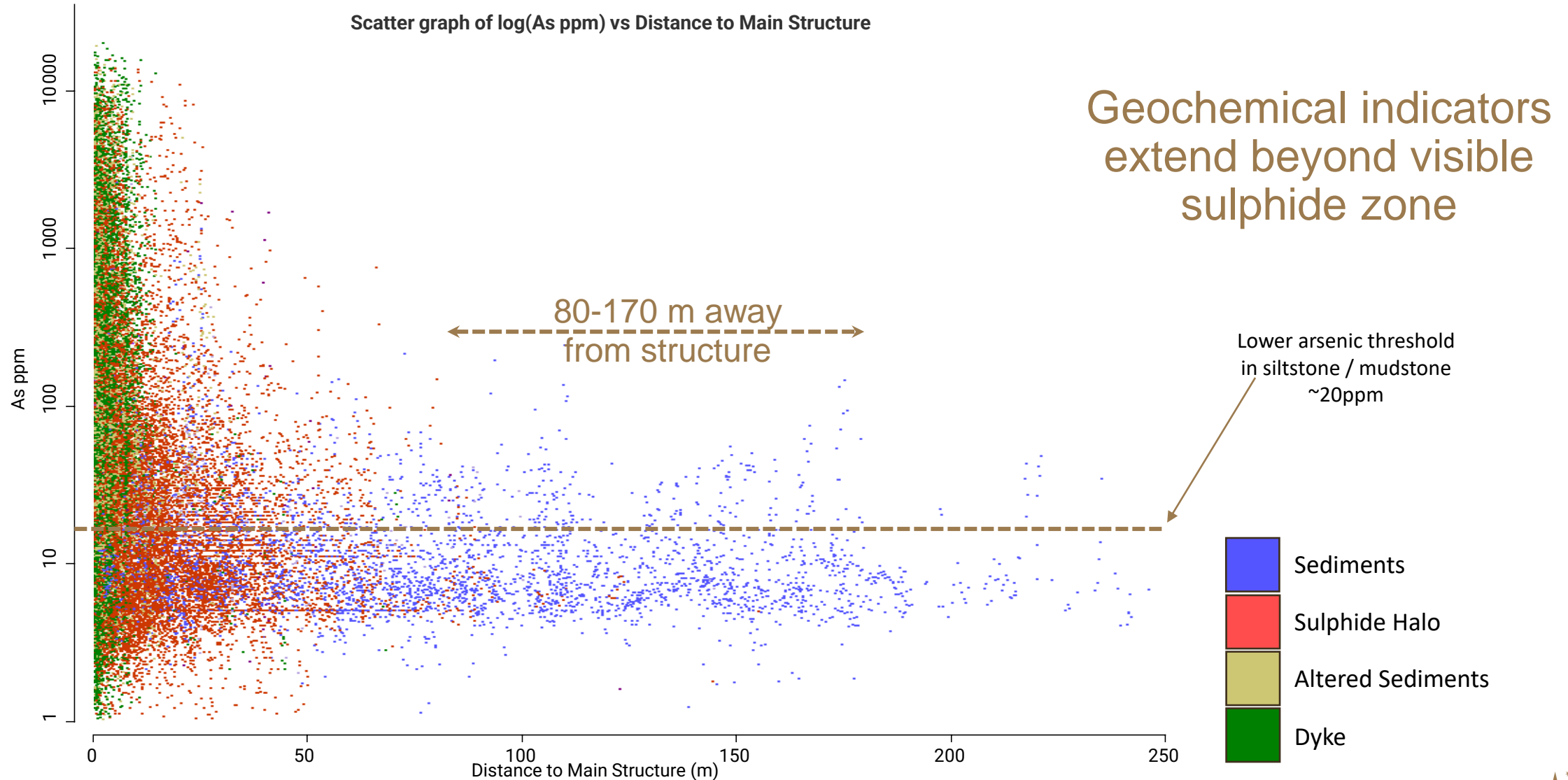
A 200m thick host to mineralisation. Visually identifiable.



Broader invisible halo



Arsenic Halo 80-170 m around mineralised host



Sunday Creek - Longitudinal Section

APOLLO ✨

APOLLO EAST ✨

A
SW

B
NE

CHRISTINA ✨

GOLDEN DYKE ✨

RISING SUN ✨



1.5 m @ 12.4 g/t AuEq
3.3 m @ 6.4 g/t AuEq
0.2 m @ 25.9 g/t AuEq
10.4 m @ 3.0 g/t AuEq
1.3 m @ 90.2 g/t AuEq
0.3 m @ 116.1 g/t AuEq
0.3 m @ 87.2 g/t AuEq
1.0 m @ 95.3 g/t AuEq

SDDSC115A - NR MAY 27, 2024

312.0 m @ 1.4 g/t AuEq
0.2 m @ 34.1 g/t AuEq
10.5 m @ 5.8 g/t AuEq
7.8 m @ 5.4 g/t AuEq
0.8 m @ 13.9 g/t AuEq
10.4 m @ 22.4 g/t AuEq
<i>including</i>
1.0 m @ 224.3 g/t AuEq
0.8 m @ 10.6 g/t AuEq

SDDSCD066 - NR JUNE 1, 2023

ASSAYS

- AuEq g/t
- > 20
 - 10 - 20
 - 5 - 10
 - 1 - 5

455.3 m @ 7.2 g/t
<i>including</i>
3.0 m @ 6.2 g/t AuEq
1.0 m @ 31.3 g/t AuEq
2.9 m @ 22.4 g/t AuEq
3.1 m @ 21.6 g/t AuEq
0.5 m @ 6.9 g/t AuEq
15.0 m @ 15.2 g/t AuEq
9.1 m @ 40.0 g/t AuEq
0.3 m @ 32.4 g/t AuEq
1.0 m @ 2,318.8 g/t AuEq
2.7 m @ 14.7 g/t AuEq
0.5 m @ 7.1 g/t AuEq
7.6 m @ 13.5 g/t AuEq

SDDSC107 - NR MARCH 5, 2024

331.5 m @ 7.1 g/t AuEq
<i>including</i>
13.1 m @ 93.8 g/t AuEq
68.5 m @ 5.3 g/t AuEq
5.4 m @ 43.9 g/t AuEq
5.0 m @ 61.4 g/t AuEq
21.7 m @ 6.5 g/t AuEq

SDDSC082 - NR OCTOBER 23, 2023

APOLLO DEEPS ✨

8.7 m @ 4.1 g/t AuEq
0.5 m @ 473.1 g/t AuEq

SDDSCD117 - NR MAY 27, 2024

- Mineralised Vein Set
- Fault
- Assays Pending

↔ OPEN ↘

↔ OPEN ↘



Schematic Plan - Predictable & Continuous Host



ASSAYS

- AuEq g/t
- > 20
 - 10 - 20
 - 5 - 10
 - 1 - 5

455.3 m @ 7.2 g/t

including

- 3.0 m @ 6.2 g/t AuEq
- 1.0 m @ 31/3 g/t AuEq
- 2.9 m @ 22.4 g/t AuEq
- 3.1 m @ 21.6 g/t AuEq
- 0.5 m @ 6.9 g/t AuEq
- 15.0 m @ 15.2 g/t AuEq**
- 9.1 m @ 40.0 g/t AuEq
- 0.3 m @ 32.4 g/t AuEq
- 1.0 m @ 2,318.8 g/t AuEq**
- 2.7 m @ 14.7 g/t AuEq
- 0.5 m @ 7.1 g/t AuEq
- 7.6 m @ 13.5 g/t AuEq

SDDSC107 - NR MARCH 5, 2024

331.5 m @ 7.1 g/t AuEq

including

- 13.1 m @ 93.8 g/t AuEq**
- 68.5 m @ 5.3 g/t AuEq**
- 5.4 m @ 43.9 g/t AuEq
- 5.0 m @ 61.4 g/t AuEq
- 21.7 m @ 6.5 g/t AuEq

SDDSC082 - NR OCTOBER 23, 2023

- 8.7 m @ 4.1 g/t AuEq**
- 0.5 m @ 473.1 g/t AuEq**

SDDSCD117 - NR MAY 27, 2024

- 1.5 m @ 12.4 g/t AuEq
- 3.3 m @ 6.4 g/t AuEq
- 0.2 m @ 25.9 g/t AuEq
- 10.4 m @ 3.0 g/t AuEq
- 1.3 m @ 90.2 g/t AuEq
- 0.3 m @ 116.1 g/t AuEq
- 0.3 m @ 87.2 g/t AuEq
- 1.0 m @ 95.3 g/t AuEq

SDDSC115A - NR MAY 27, 2024

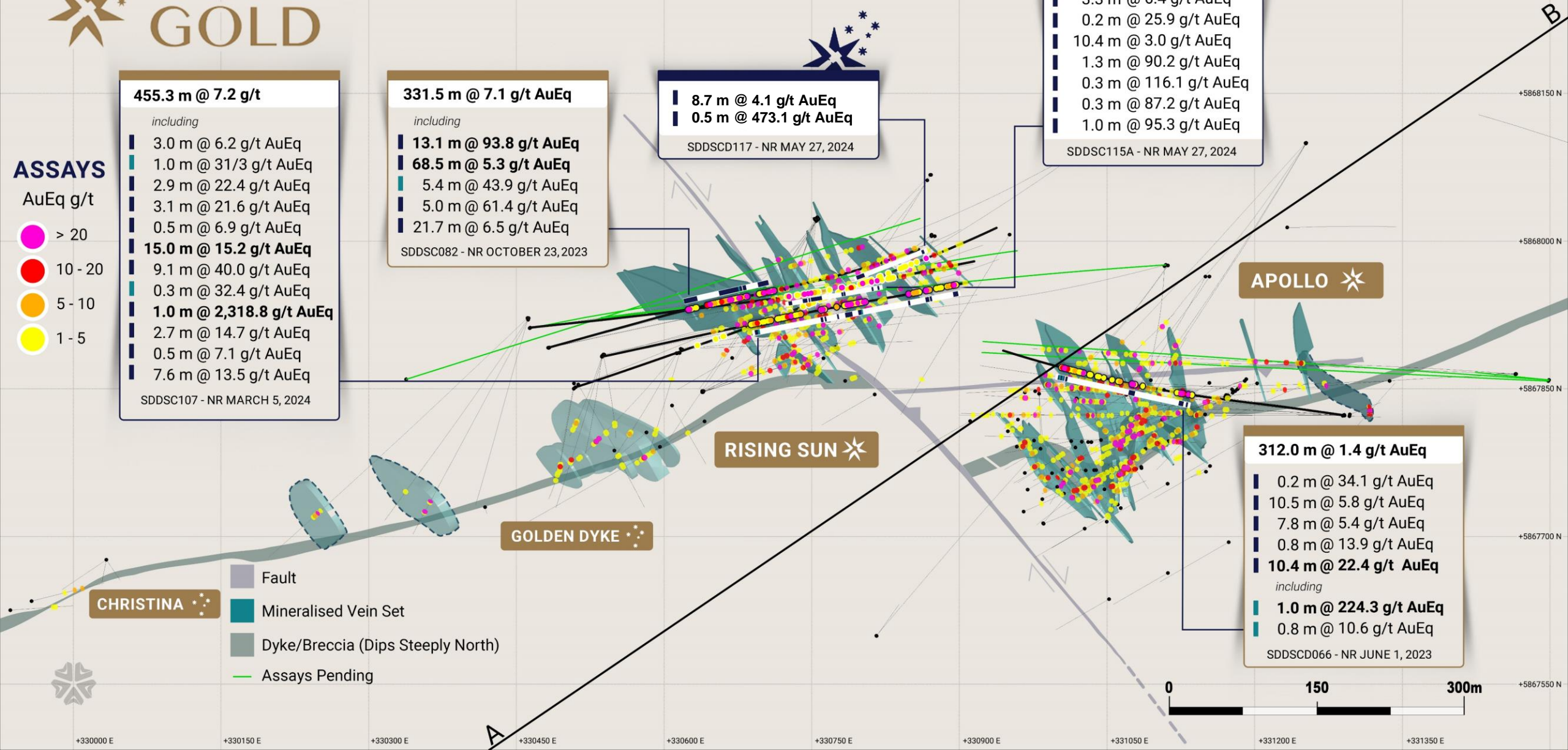
312.0 m @ 1.4 g/t AuEq

- 0.2 m @ 34.1 g/t AuEq
- 10.5 m @ 5.8 g/t AuEq
- 7.8 m @ 5.4 g/t AuEq
- 0.8 m @ 13.9 g/t AuEq
- 10.4 m @ 22.4 g/t AuEq**

including

- 1.0 m @ 224.3 g/t AuEq**
- 0.8 m @ 10.6 g/t AuEq

SDDSCD066 - NR JUNE 1, 2023



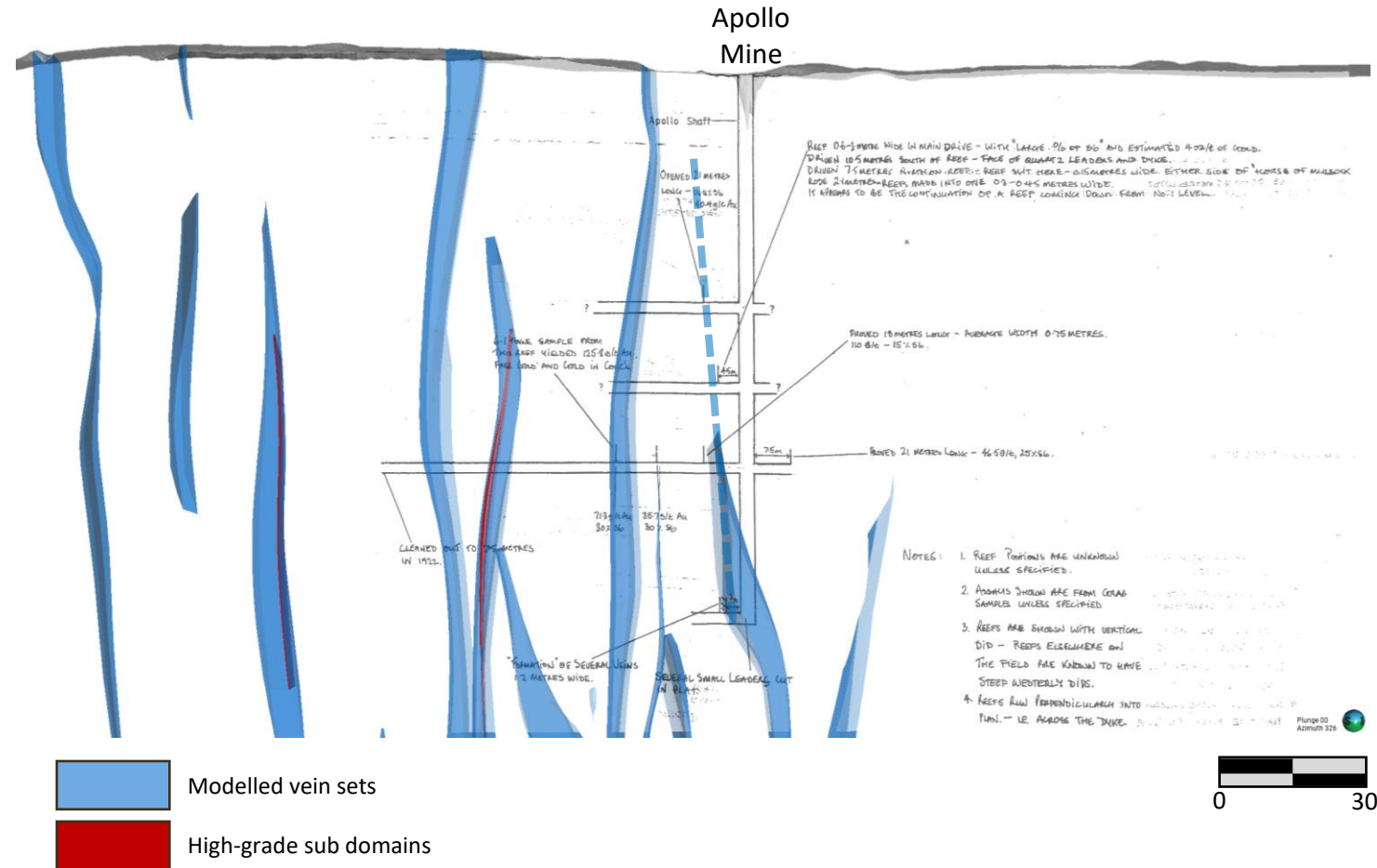
+330000 E +330150 E +330300 E +330450 E +330600 E +330750 E +330900 E +331050 E +331200 E +331350 E

+5868150 N
+5868000 N
+5867850 N
+5867700 N
+5867550 N

How to model and predict this style?

- Continuity of vein sets and grades are described in three dimensions across multiple datasets including:

- ✓ Fifty years of historic mining records and drilled continuity below mined areas
- ✓ Geological likeness
- ✓ Structural oriented drill core data, quality control data and structural controls on mineralization trends
- ✓ Geostatistics that demonstrate a low coefficient of variation



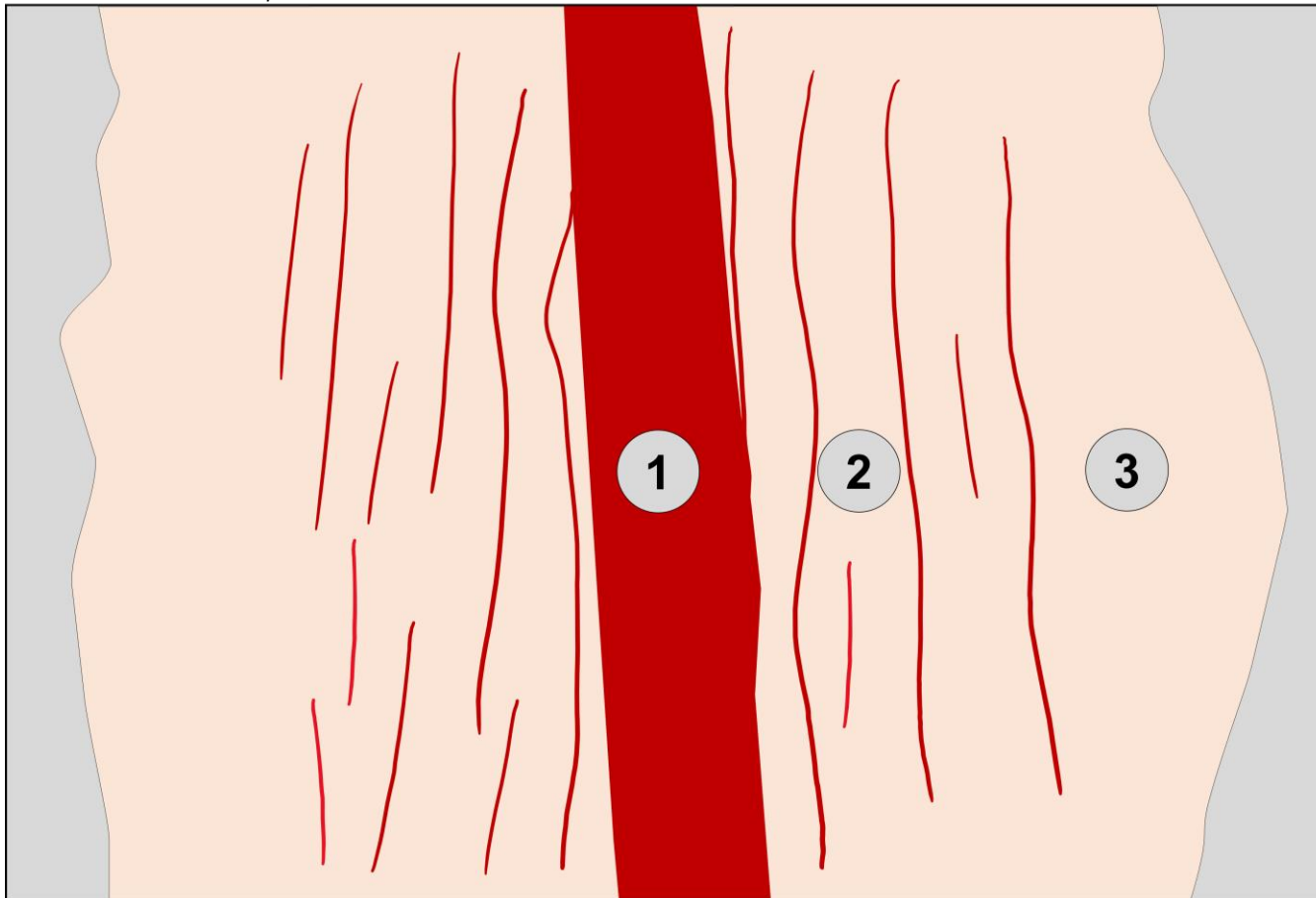
Vein Morphology: Geological Likeness Informs Continuity

Vein array / vein set: 0.5 – 10m wide, Average grade 1.8-12.5 g/t Au & 0.1-5.2 % Sb

High-grade core: 0.1 – 1.5m Wide, Average Grade +20 - >1,000 g/t Au & +5 % Sb

*Estimated true widths quoted

Schematic View – Looking north-west



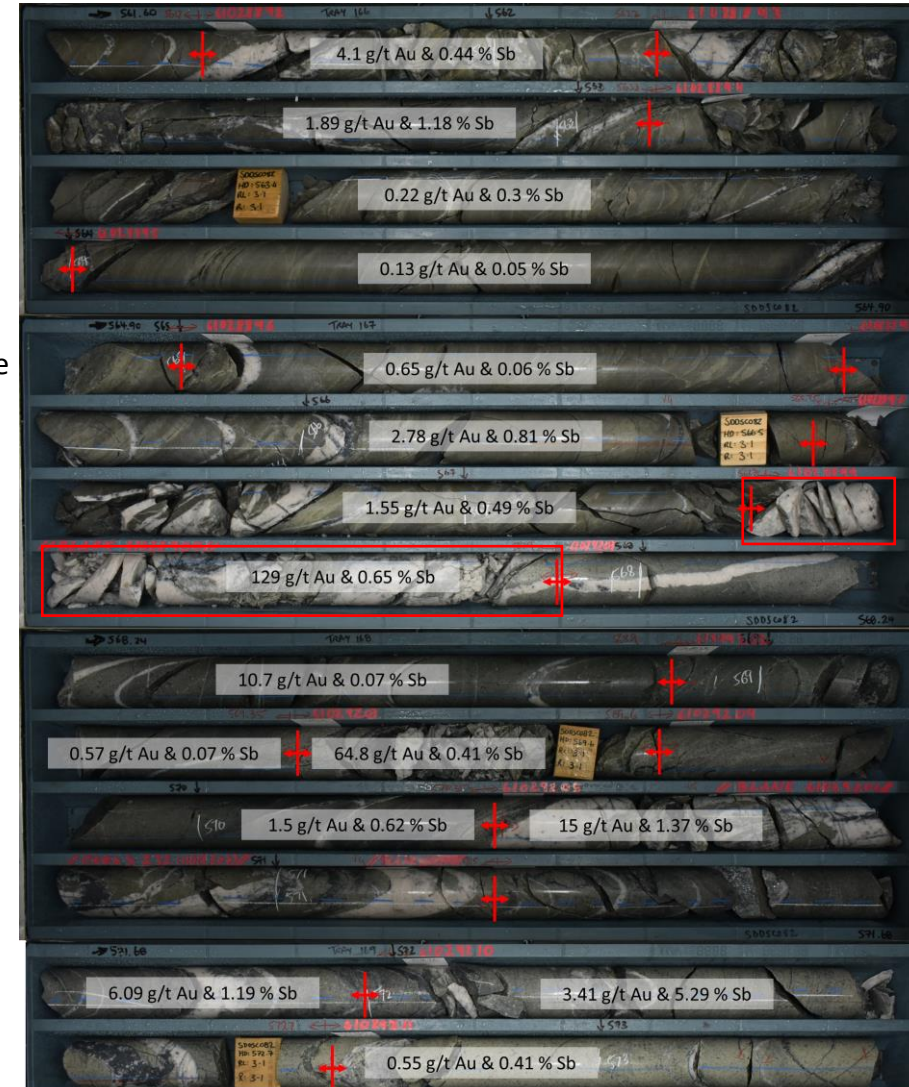
→ Increasing pyrite intensity

← Increasing pyrite intensity

ASX: SXG →

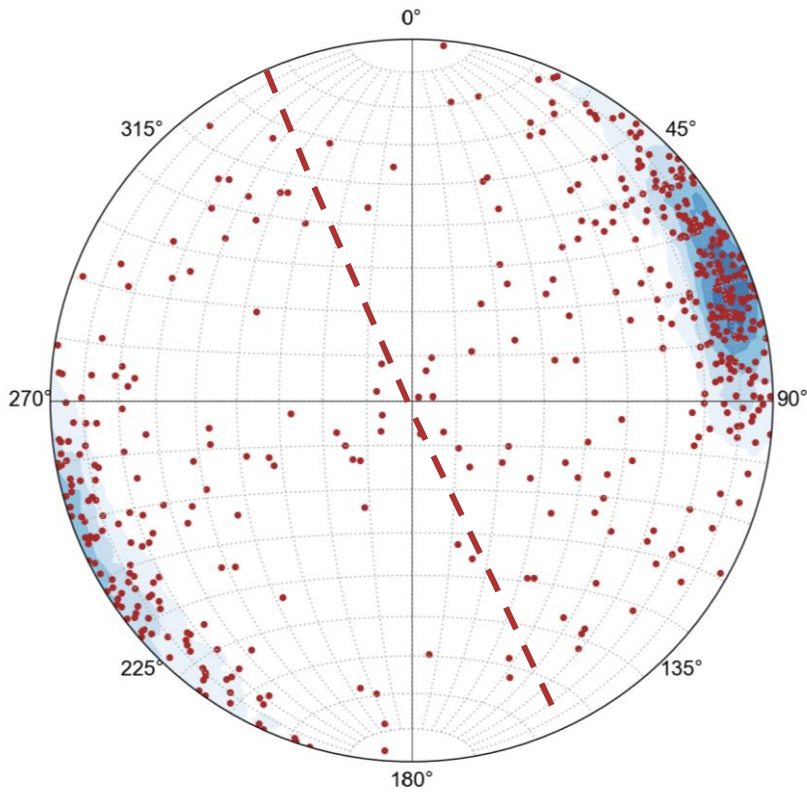
←

- 1 Shear vein – high-grade core
- 2 Vein arrays – extension veins
- 3 Disseminated pyrite



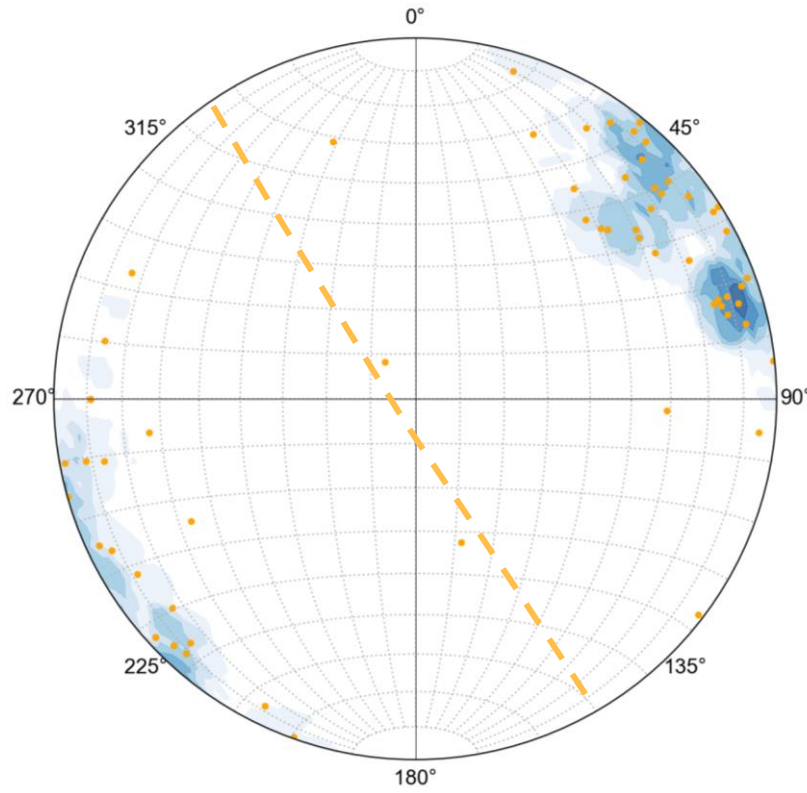
9.0 m @ 16.5 g/t AuEq (14.6 g/t Au, 1.0% Sb) from 565.8m (SDDSC082)

Structural Geology: Stereonets Inform Continuity



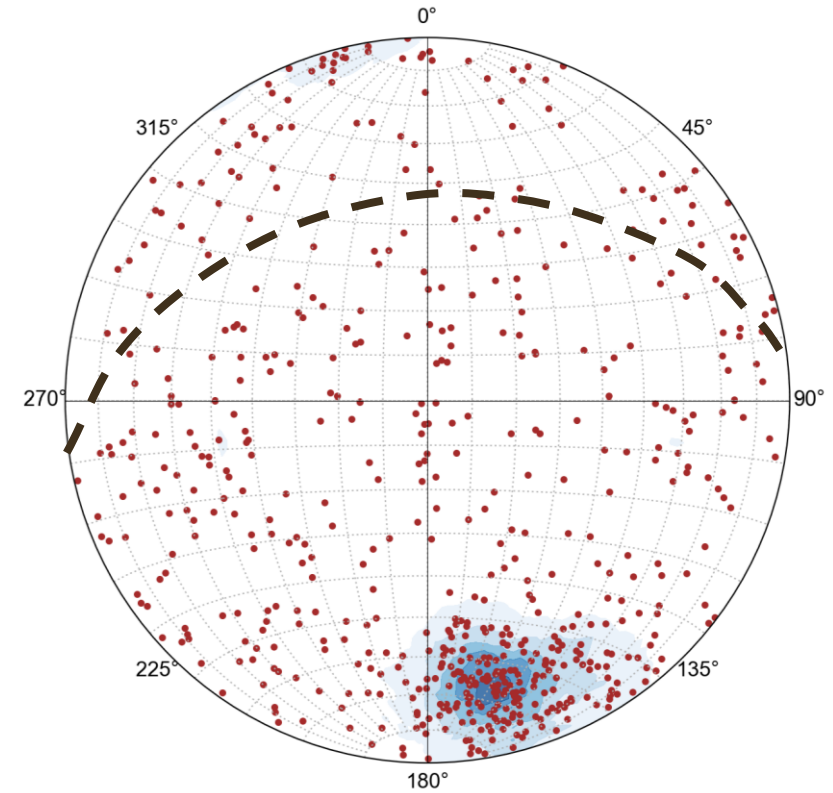
Stibnite bearing veins
N=489

Subvertical vein arrays
and shear veins



Visible Gold bearing veins –
high confidence orientations
N=60

Consistent with Sb
bearing veins

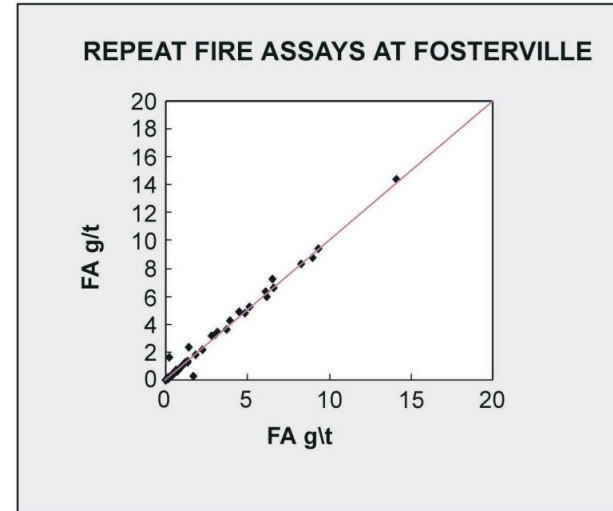
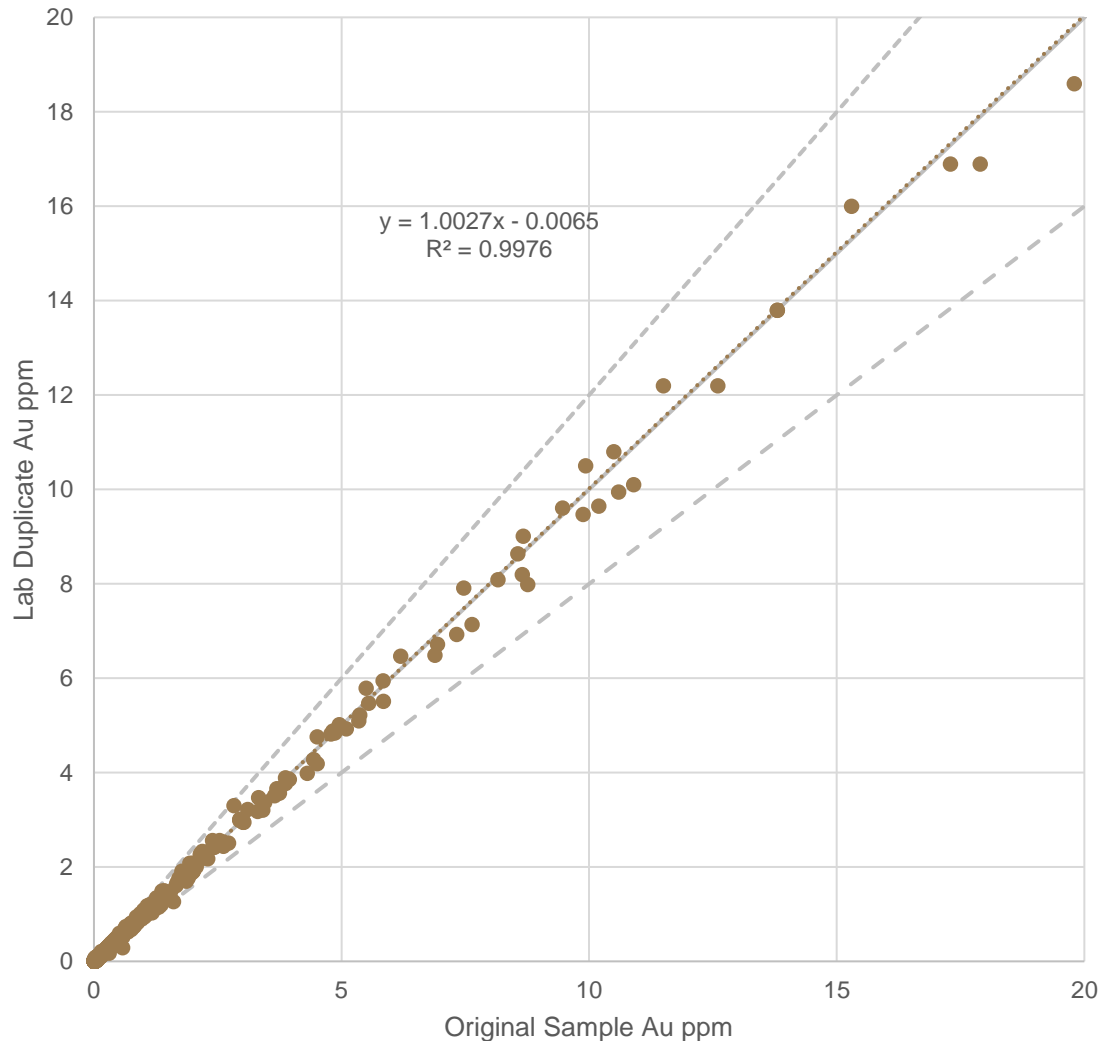


Pyrite veinlets
N = 609

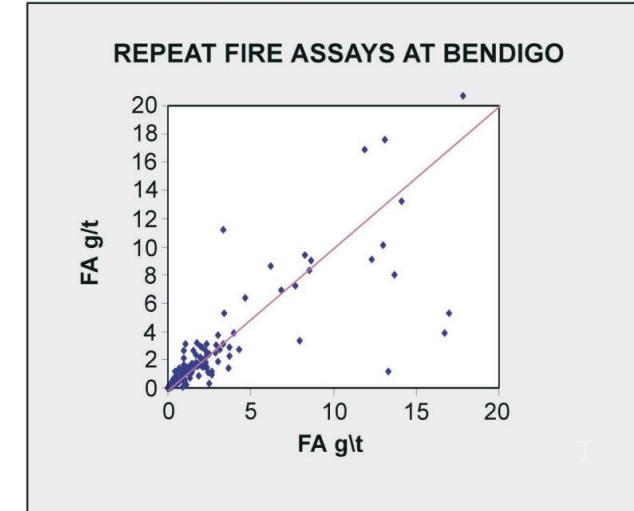
Early lithological control
– follows dyke trend

Lab Duplicates Demonstrate Homogeneity of samples

Lab duplicate



*Fosterville – Kirkland Lake Gold
December 2016 Technical report*



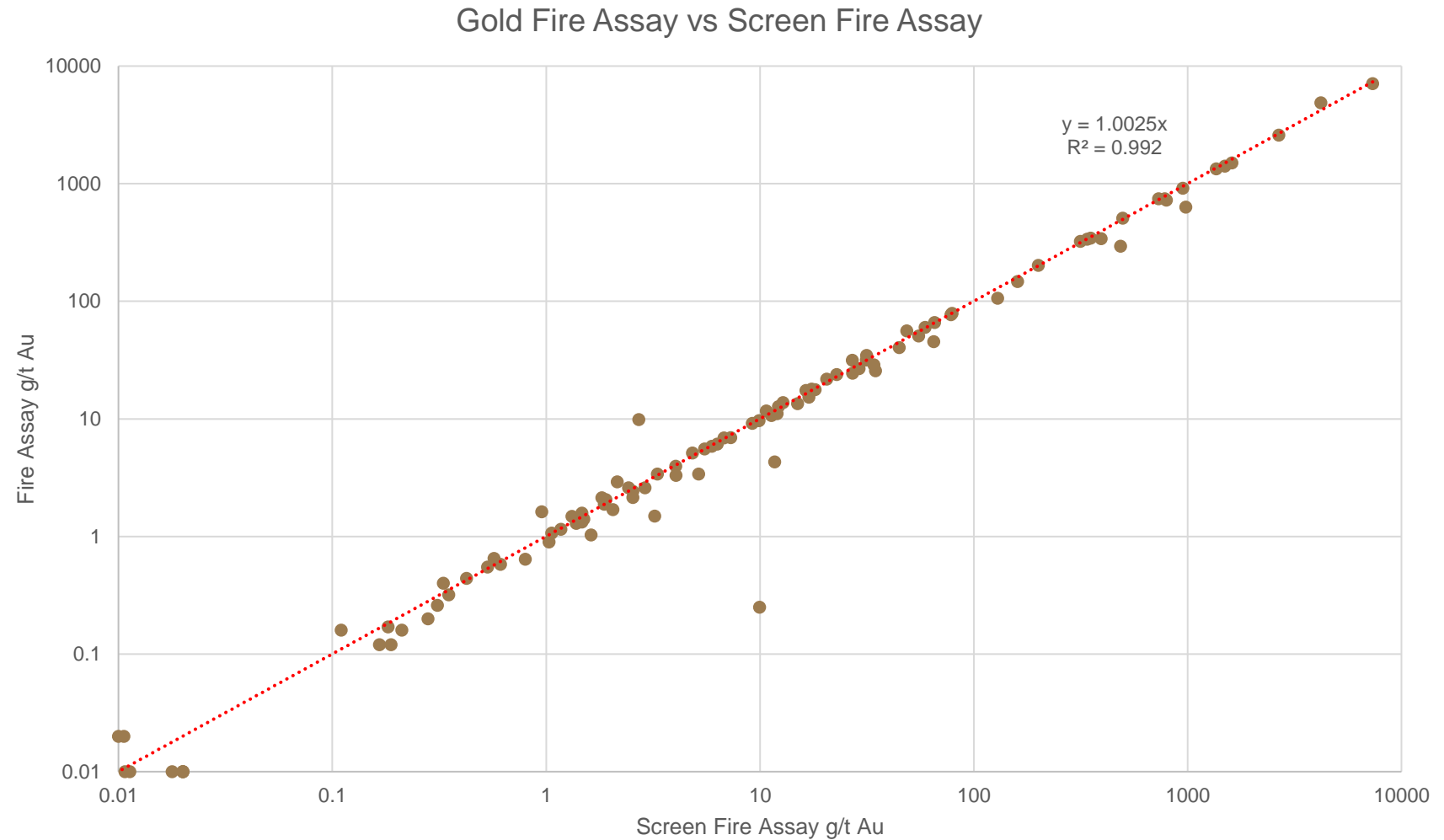
Bendigo – GBM gold

Comparison of repeat fire assay data at Sunday Creek, Bendigo and Fosterville. All samples prepared in an LM5 pulveriser to nominal -75 micron with two samples taken from each pulp

High grade is not always nuggetty: SFA and FA Duplicates

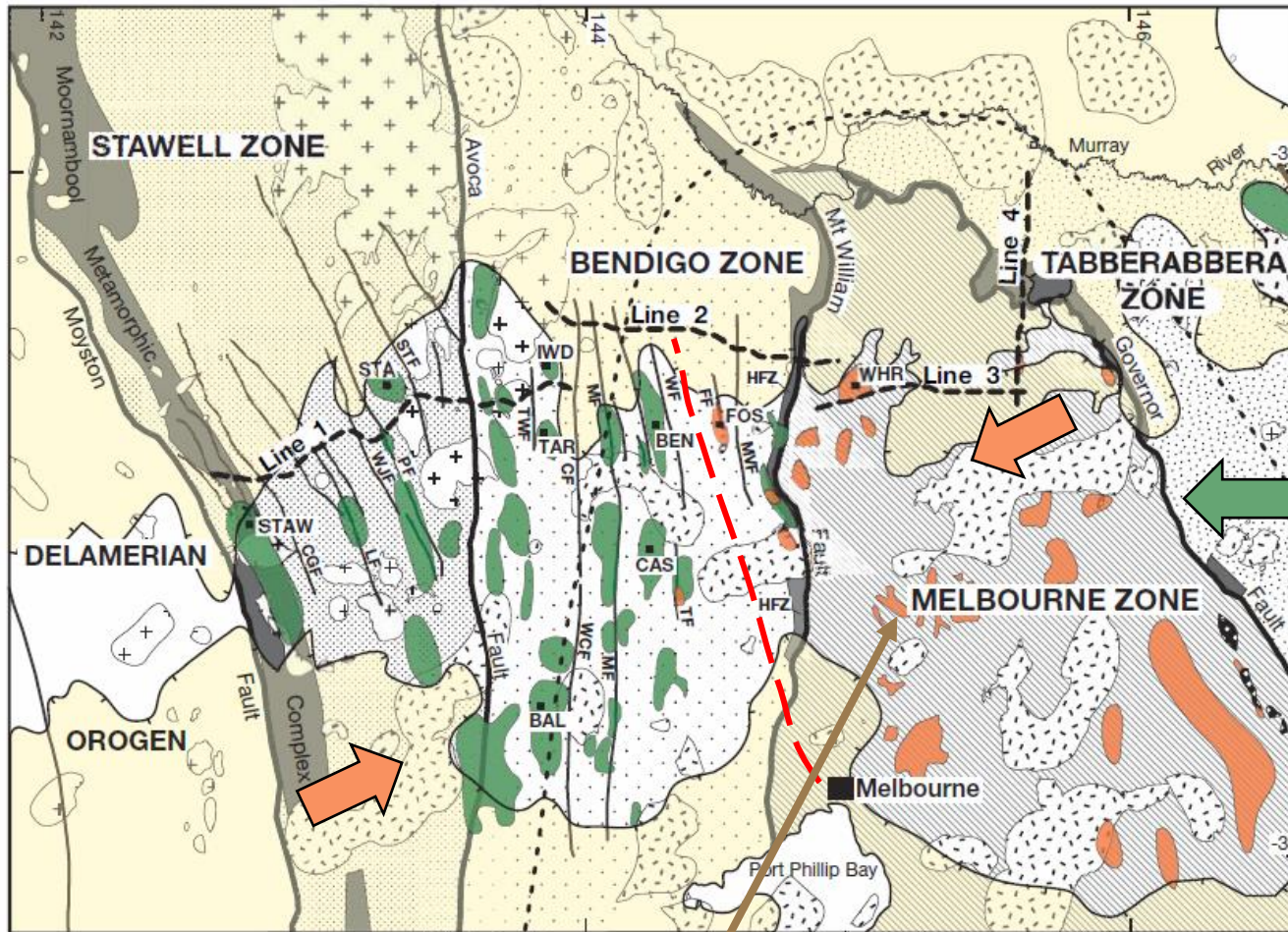


SDDSC117: 0.5 m @ 473.1 g/t AuEq (473.0 g/t Au, 0.0% Sb) from 913.6 m



Repeatable results between Fire Assay and Screen Fire Assay

Regional geology



- Cenozoic cover rocks
- Late Devonian granite
- Early Devonian granite
- Ordovician to Devonian sedimentary rocks (Melbourne Zone)
- Ordovician to Silurian sedimentary rocks (Tabberabbera Zone)
- Ordovician turbidites (Bendigo Zone)
- Cambrian turbidites (Stawell Zone)
- Cambrian mafic volcanic rocks
- Cambrian calc-alkaline volcanic rocks (upper layer of Selwyn Block)
- Goldfields formed in 380 - 370 Ma event
- Goldfields formed in 440 Ma and 420 - 400 Ma events

Willman et al., 2010

100 km

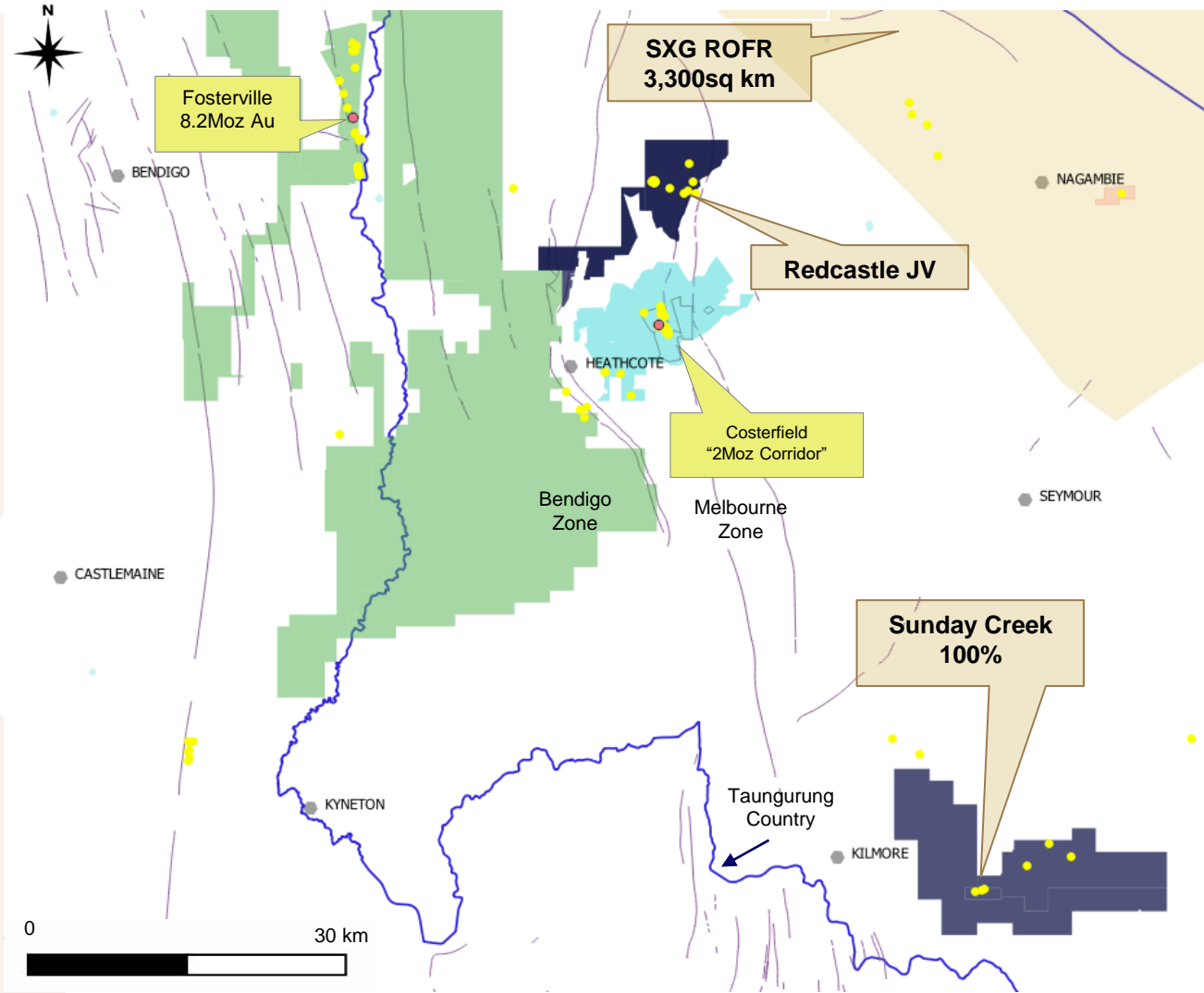
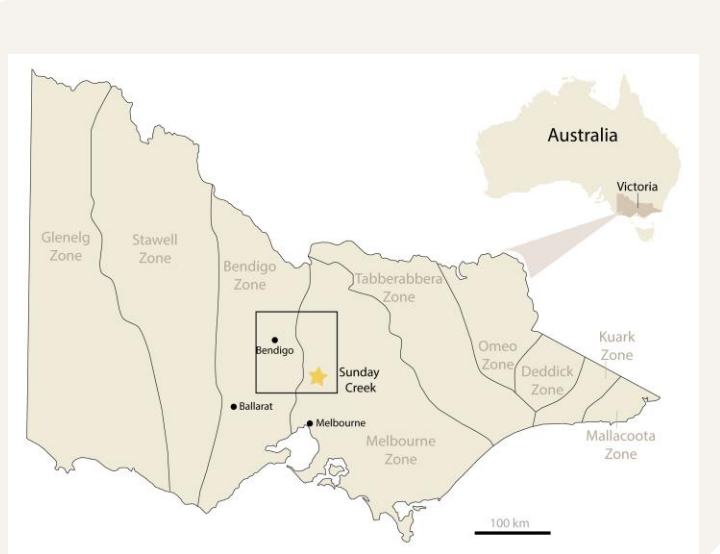
Mesozonal character

Sunday Creek

Sb-As bearing, mainly epizonal character

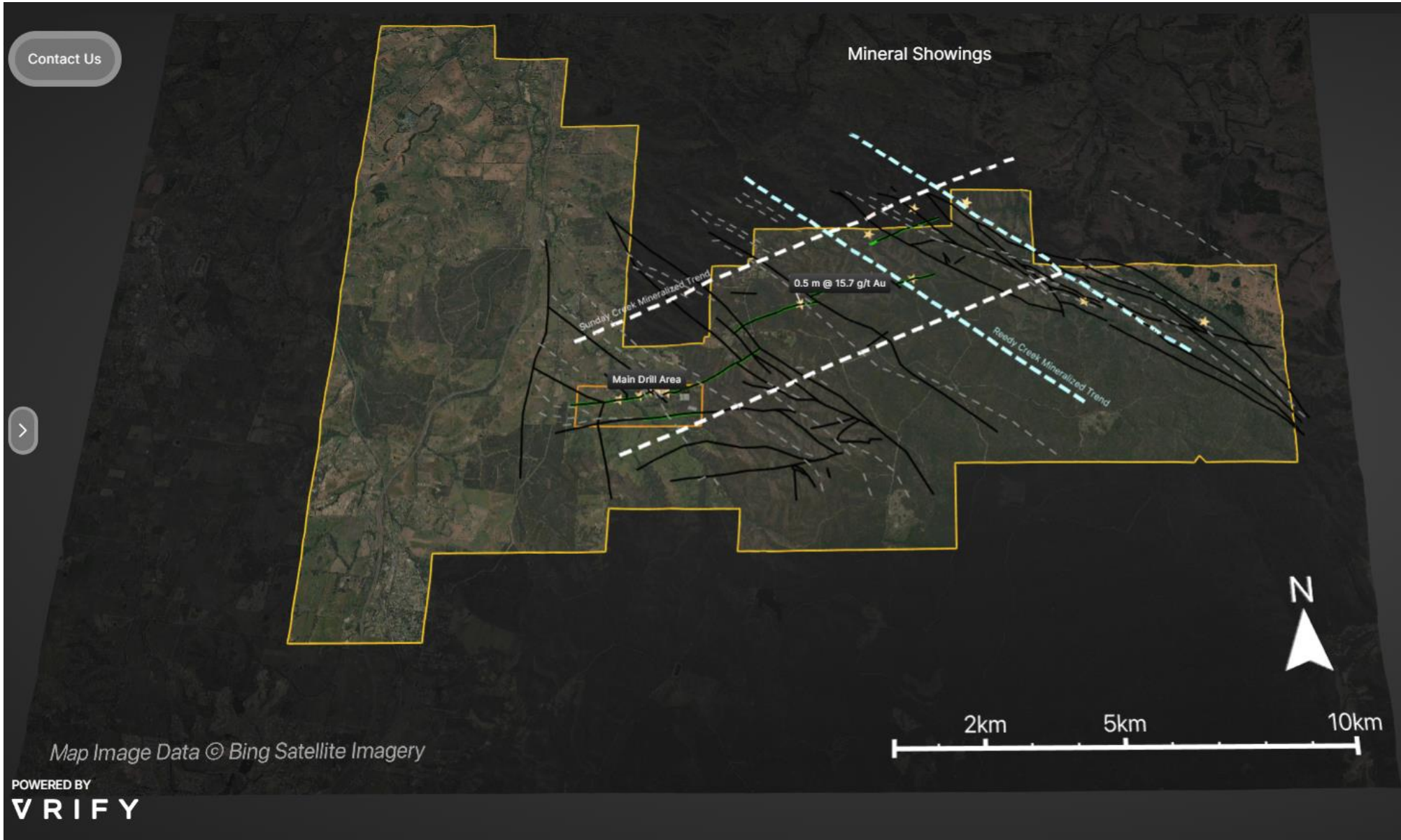


SXG – Tenure

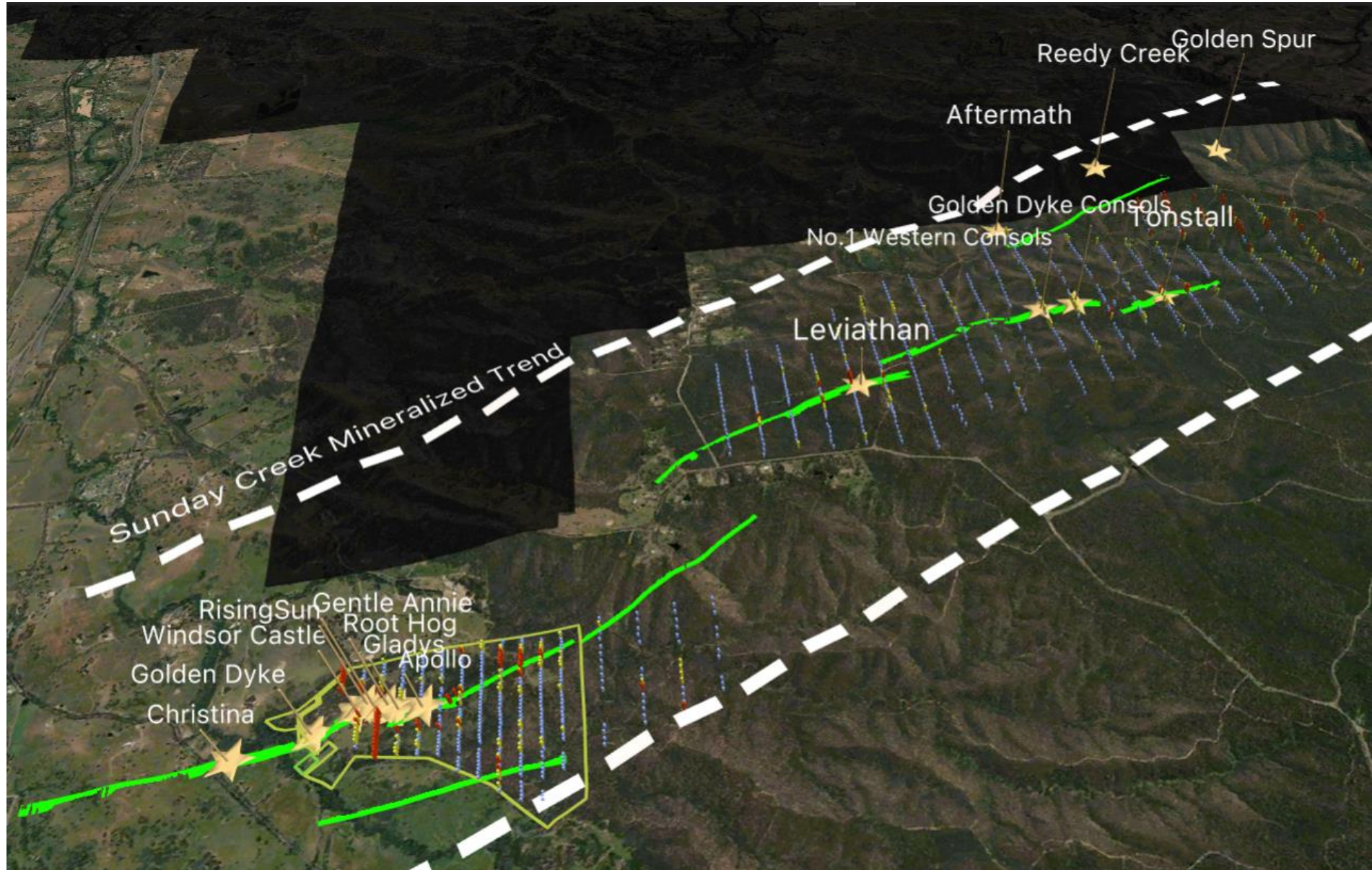


-  Epizonal Gold Occurrences
-  SXG Projects
-  SXG Nagambie Right of First Refusal (ROFR)
-  Agnico Eagle Mines (Fosterville)
-  Mandalay Resources (Costerfield)

Tenure and Structural Architecture

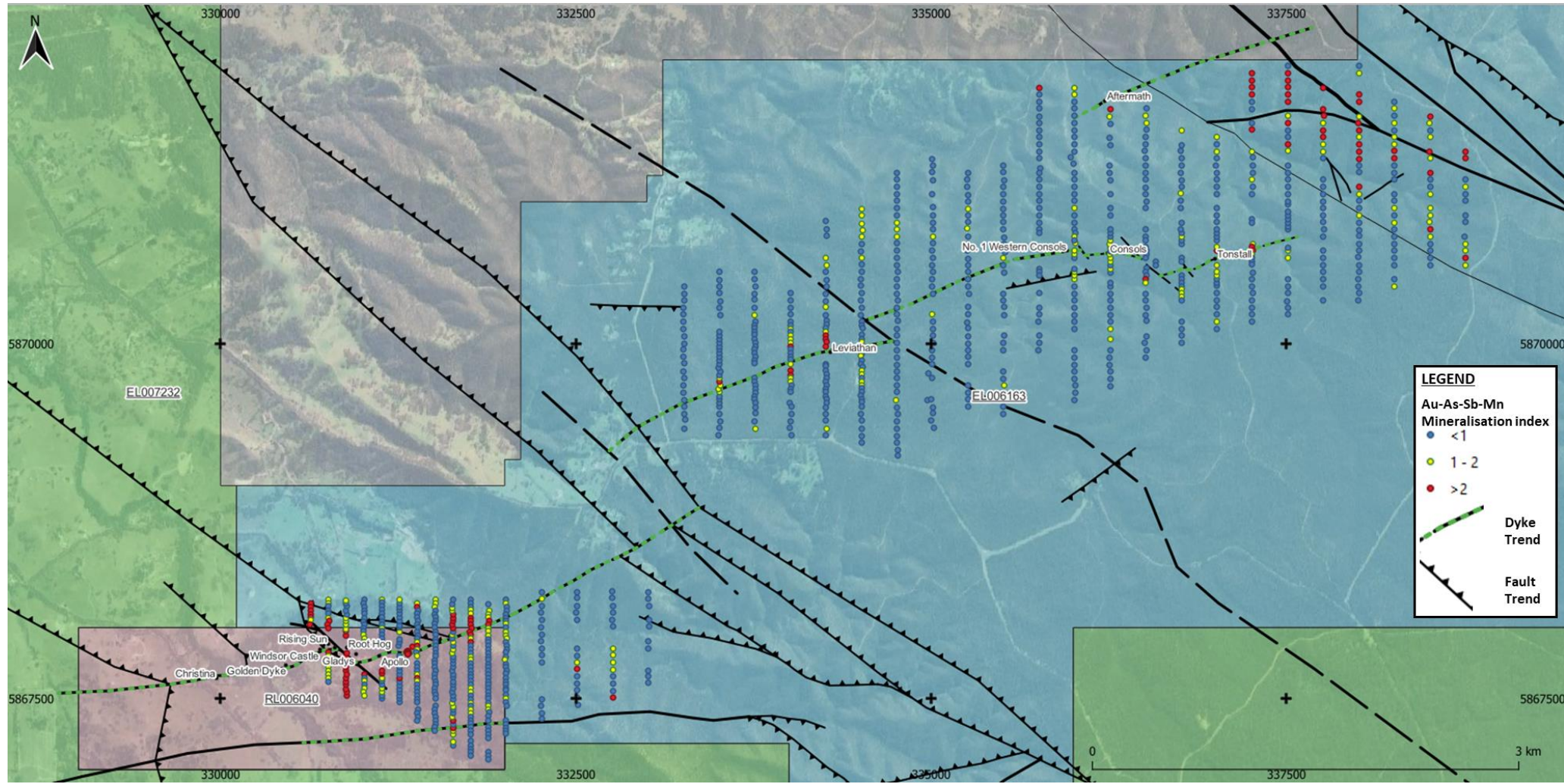


10 km Regional Dyke Trend With Au-As-Sb Soils



Soil Geochemistry

- Clear geochemical anomalies can be identified from a combined trace element additive index using Au, As, Sb and Mn.
- Highlights all known historic occurrences and additional areas on the tenure



Schematic Plan - Predictable & Continuous Host



ASSAYS

- AuEq g/t
- > 20
 - 10 - 20
 - 5 - 10
 - 1 - 5

455.3 m @ 7.2 g/t

including

- 3.0 m @ 6.2 g/t AuEq
- 1.0 m @ 31/3 g/t AuEq
- 2.9 m @ 22.4 g/t AuEq
- 3.1 m @ 21.6 g/t AuEq
- 0.5 m @ 6.9 g/t AuEq
- 15.0 m @ 15.2 g/t AuEq**
- 9.1 m @ 40.0 g/t AuEq
- 0.3 m @ 32.4 g/t AuEq
- 1.0 m @ 2,318.8 g/t AuEq**
- 2.7 m @ 14.7 g/t AuEq
- 0.5 m @ 7.1 g/t AuEq
- 7.6 m @ 13.5 g/t AuEq

SDDSC107 - NR MARCH 5, 2024

331.5 m @ 7.1 g/t AuEq

including

- 13.1 m @ 93.8 g/t AuEq**
- 68.5 m @ 5.3 g/t AuEq**
- 5.4 m @ 43.9 g/t AuEq
- 5.0 m @ 61.4 g/t AuEq
- 21.7 m @ 6.5 g/t AuEq

SDDSC082 - NR OCTOBER 23, 2023

- 8.7 m @ 4.1 g/t AuEq**
- 0.5 m @ 473.1 g/t AuEq**

SDDSCD117 - NR MAY 27, 2024

- 1.5 m @ 12.4 g/t AuEq
- 3.3 m @ 6.4 g/t AuEq
- 0.2 m @ 25.9 g/t AuEq
- 10.4 m @ 3.0 g/t AuEq
- 1.3 m @ 90.2 g/t AuEq
- 0.3 m @ 116.1 g/t AuEq
- 0.3 m @ 87.2 g/t AuEq
- 1.0 m @ 95.3 g/t AuEq

SDDSC115A - NR MAY 27, 2024

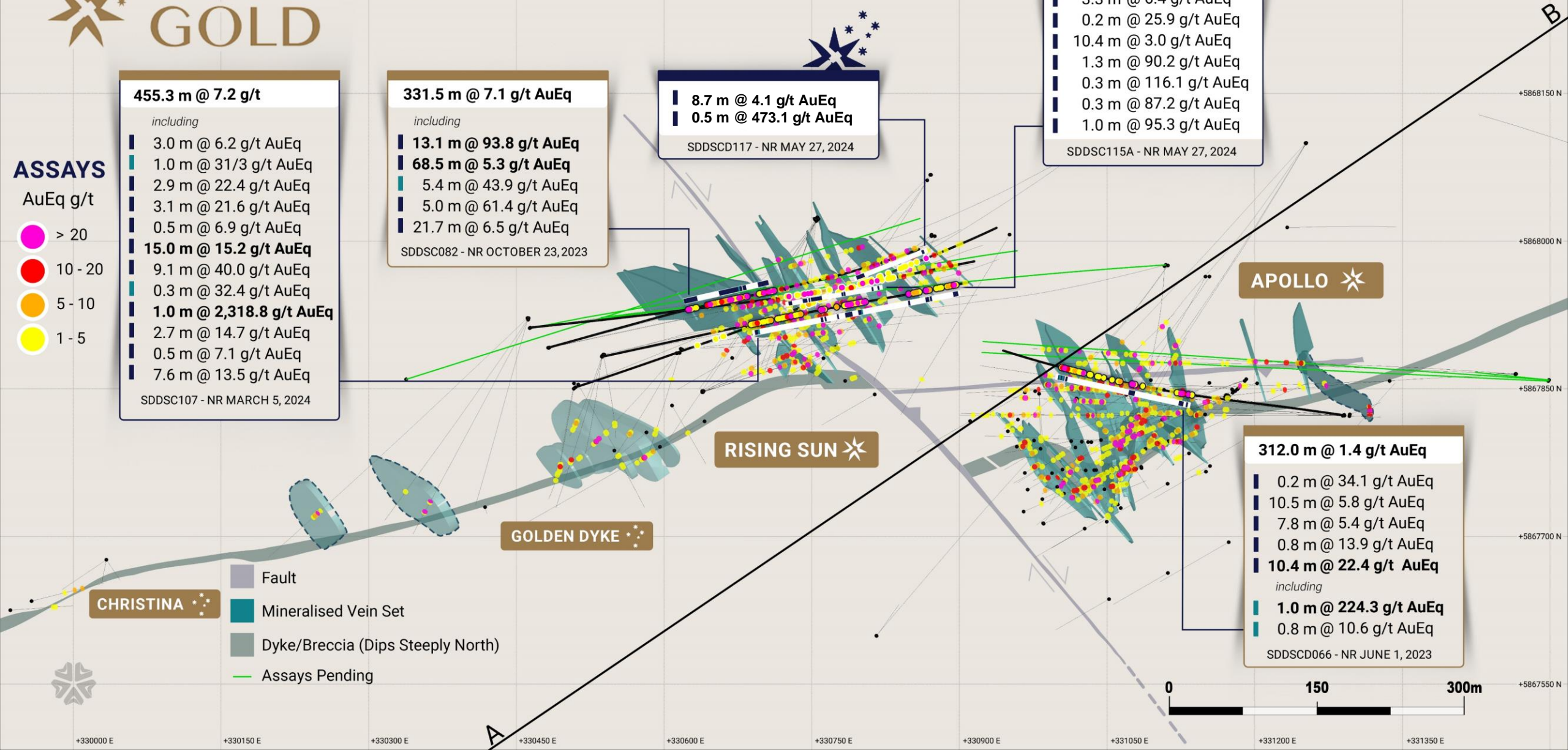
312.0 m @ 1.4 g/t AuEq

- 0.2 m @ 34.1 g/t AuEq
- 10.5 m @ 5.8 g/t AuEq
- 7.8 m @ 5.4 g/t AuEq
- 0.8 m @ 13.9 g/t AuEq
- 10.4 m @ 22.4 g/t AuEq**

including

- 1.0 m @ 224.3 g/t AuEq**
- 0.8 m @ 10.6 g/t AuEq

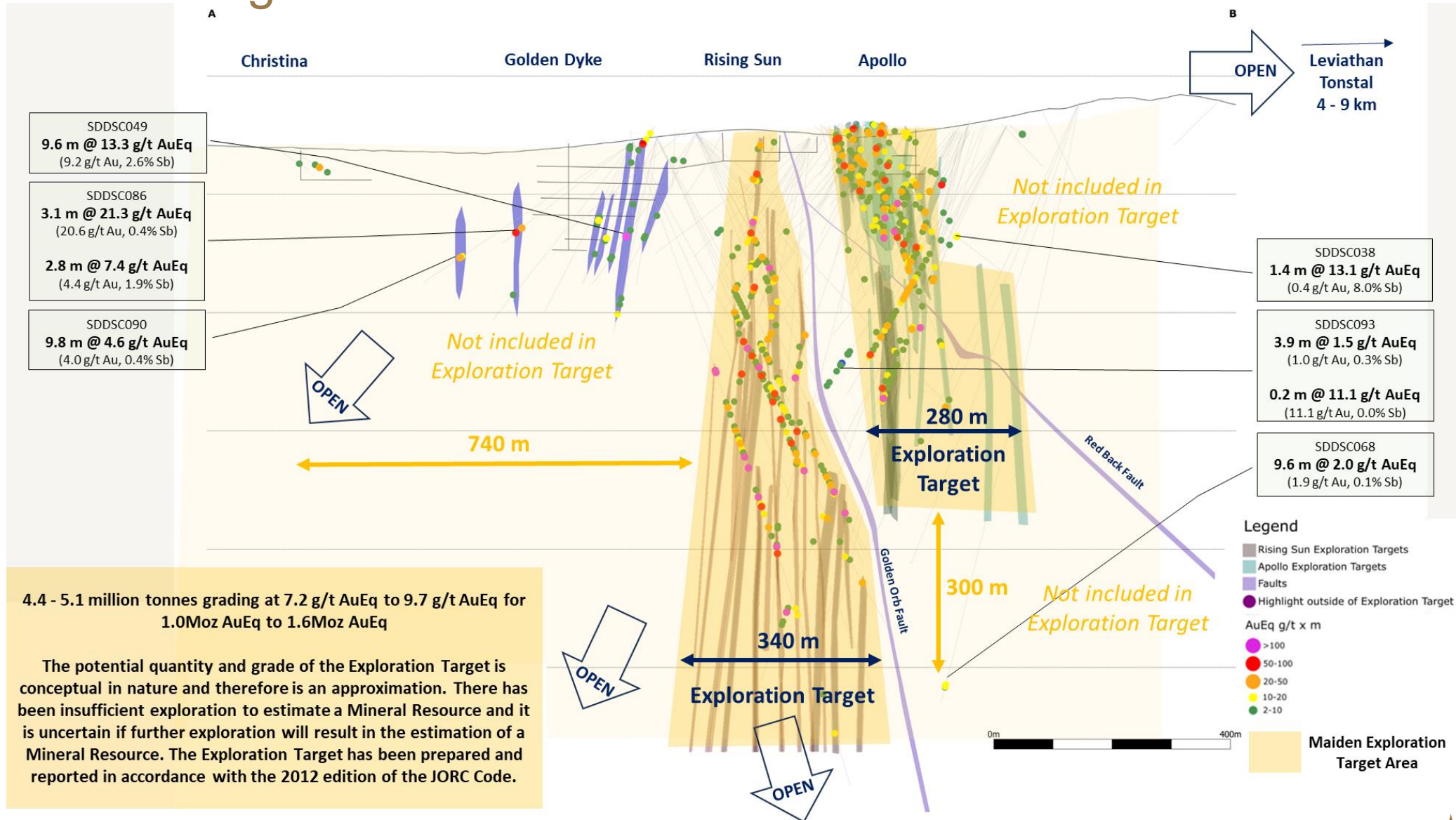
SDDSCD066 - NR JUNE 1, 2023



- Fault
- Mineralised Vein Set
- Dyke/Breccia (Dips Steeply North)
- Assays Pending

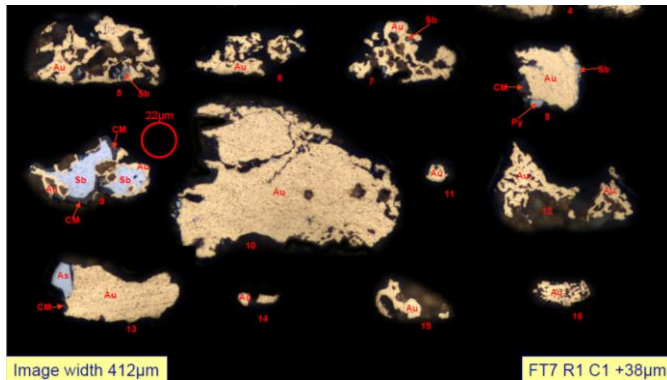


Exploration Target – Built in One Year



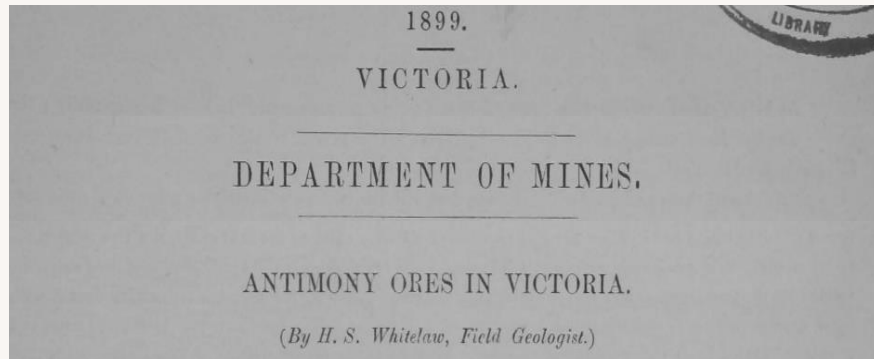
Non-refractory, simple gravity-flotation flow sheet

Preliminary Metallurgical Test Work



- Utilised Costerfield flow sheet
- Mineralogical investigations demonstrated a high proportion of non-refractory native gold (82% - 84%).
- Gravity (18-33%) with bulk flotation resulted in 93.3% - 97.6% recovery of gold.
- Flotation alone resulted in 88.9% - 95.0% recovery of gold in an antimony-gold concentrate:
 - grading 32% - 52% Sb (87.1% - 93.8% recovery)
 - 81.4 g/t – 313.6 g/t Au (40% of feed gold) with low to moderate arsenic contents (0.4% and 2.6%)
 - Opportunities to blend or float sulphide concentrate
 - 96% - 98% of the contained gold was native gold
- Next Steps:
 - Optimise for gold into gravity and minimising As into Sb-Au con (blending, sequential flotation)

Antimony – Yesterday’s and Today’s Critical Metal



Historically and economically, antimony is the second most important metallic commodity in Victoria after gold.



The Victoria gold mining industry practically closed at the onset of WW1. Except antimony, mandated by the Imperial Government under the Munitions Act, 1915 to ship concentrates to the St. Helens Smelting and Refining Company in the UK

The Critical Minerals Institute Identifies the 14 Most Elusive Critical Minerals in the World and Launches New Website

📅 January 18, 2023 (<https://criticalmineralsinstitute.com/2023/01/18/>)

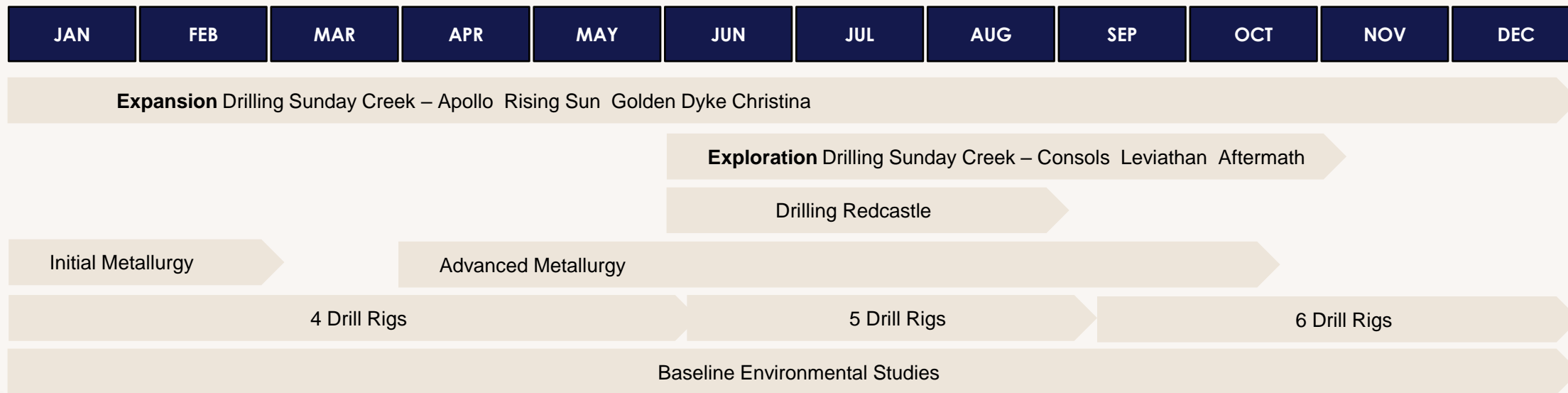
👉 News Releases (<https://criticalmineralsinstitute.com/category/news-releases/>)



- | | | |
|------------------|-----------------------------|--|
| 1. Antimony (sb) | 6. Indium (In) | 11. Rare Earth Elements – of 17 REEs: neodymium, praseodymium, dysprosium, Terbium |
| 2. Bismuth (Bi) | 7. Lithium (Li) | 12. Tantalum (Ta) |
| 3. Cobalt (Co) | 8. Magnesium (Mg) | 13. Tungsten (W) |
| 4. Gallium (Ga) | 9. Niobium (Nb) | 14. Vanadium (V) |
| 5. Graphite (C) | 10. Platinum group of metal | |

Aggressive Exploration Program – Staying on the Lassonde Curve

2024



Drilling plan has 3 clear objectives that will have the largest emphasis over the next six months

Demonstrate grade, demonstrate volume, demonstrate scale



4 diamond drill rigs operating at site

Aim to increase rigs each quarter, 10km per rig p.a., drill cost A\$200/m incl assays



Plan to drill 60 km now to Sept 2025

Aim to Create the Highest Margin Gold Business Globally



Highest hit rate globally, grade increasing,

- 38 intersections > 100 AuEq g/t x m from 51km drilling
- 455.3 m @ 7.2 g/t Au including 1.0 m @ 2,318 g/t Au
- 331.5 m @ 6.8 g/t Au including 13.1 m @ 91.7 g/t Au



Free milling gold, 20% antimony by-product (defence critical)



Large exploration upside, only 3% of trend tested



Tier one Australian jurisdiction, in shadow of headframe of highest-grade global gold mine



Seasoned discovery team focussed on value creation per share



Supportive shareholders to underpin value creation lifecycle



Contact Us



info@southerncrossgold.com.au



www.southerncrossgold.com.au



Corporate Development

Nicholas Mead

Level 21

459 Collins St

Melbourne Vic 3000

Registered Office

Level 21

459 Collins St

Melbourne Vic 3000



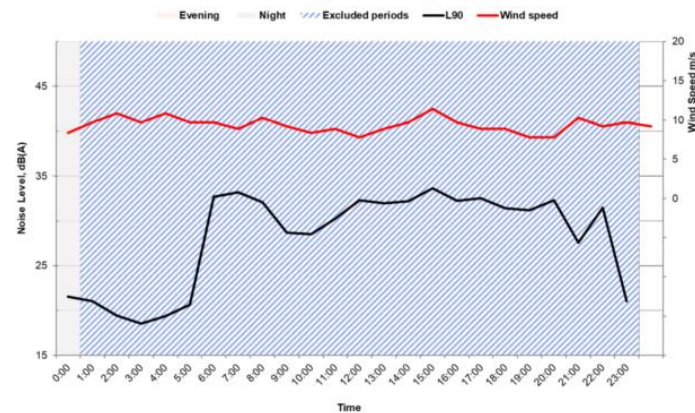
SOUTHERN CROSS
GOLD

Positioning for Development

Our primary focus is to target grade, build volume and demonstrate regional scale, however the company is actively de-risking the project through pre-development activities to be in an optimal position for design, feasibility studies and permitting

All ongoing

Environmental Baseline Studies



Stakeholder Engagement



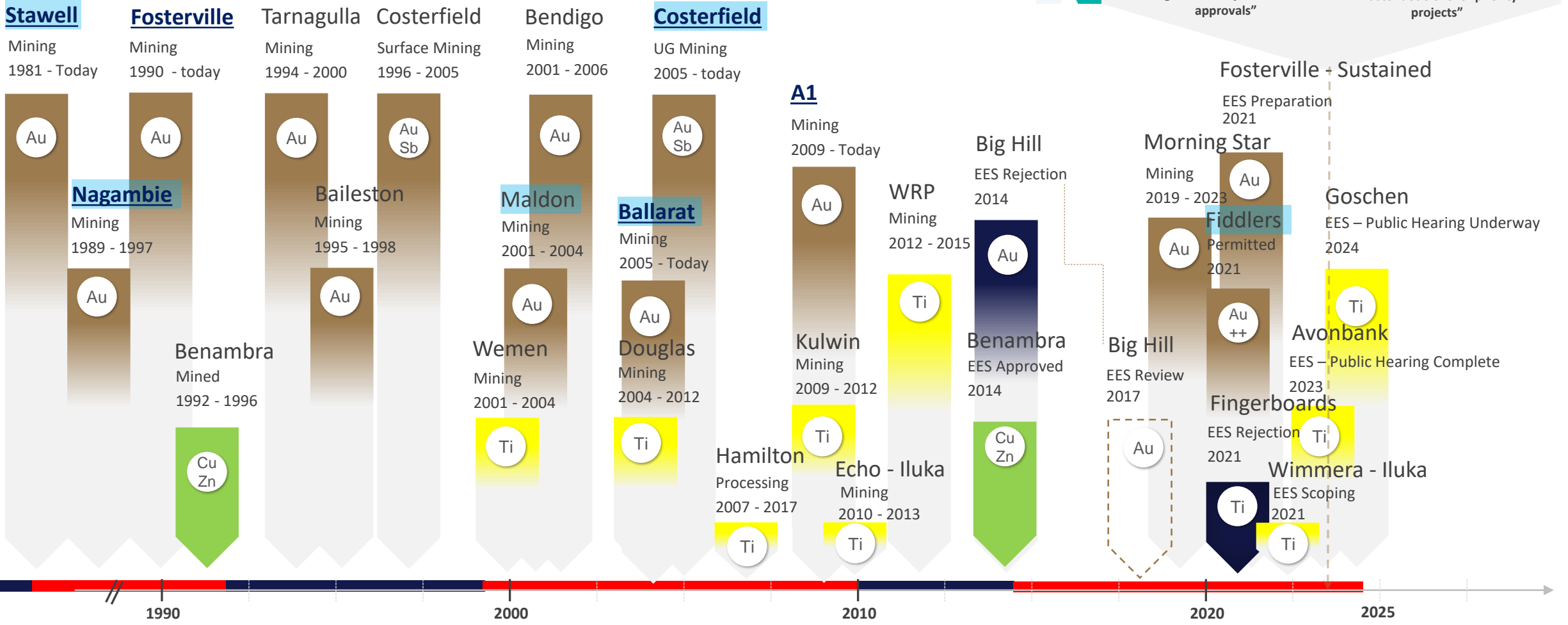
Victorian Sustained Mine Permitting and Development

5 Gold Mines Operating Today

GOVERNMENT INITIATIVES

Approvals Coordination
 "A\$23.3m to drive investment by removing uncertainty around resource approvals"

Development Facilitation Program
 "Faster decisions for priority projects"



■ Labour
■ Liberal
■ Gold
■ Mineral Sands
■ Base Metals
■ Municipal Permitted
■ Operating Mine Today