

23 JULY 2024

**SXG Extends Mineralisation 450 m Down Dip at Golden Dyke  
Drills 3.4 m @ 53.7 g/t Au and 0.4 m @ 291.3 g/t Au at Rising Sun  
Fifth Rig Added to Project**

**Melbourne, Australia — Southern Cross Gold Ltd (“SXG” or the “Company”) (ASX: SXG)** announces results from four diamond drill holes: SDDSC114W1, SDDSC120, SDDSC121 and SDDSC121W1, from the Rising Sun and Golden Dyke prospects at the 100%-owned Sunday Creek Gold-Antimony Project in Victoria (Figure 6).

Drillhole SDDSC120, drilled deep beneath Golden Dyke, intersected five vein sets and **discovered a new mineralised vein set 450 m vertical metres down dip** below previous drilling at Golden Dyke. Drillhole SDDSC121W1 contributed two further +100 g/t AuEq x m intercepts: **0.4 m @ 311.3 g/t AuEq** (291.3 g/t Au, 10.6% Sb) from 622.6 m and **3.4 m @ 56.0 g/t AuEq** (53.7 g/t Au, 1.2% Sb) from 661.1 m.

## HIGHLIGHTS

- SDDSC121W1 drilled west to east at Rising Sun to extend the strike length of the NW-SE oriented veins sets (“rungs”). It intersected **six high-grade vein sets** and one previously unmodelled vein set. It included **eight assayed intervals of > 10 g/t Au (up to 558.0 g/t Au), and six assayed intervals > 5% Sb (up to 19.9% Sb)**. Selected highlights include:
  - **1.0 m @ 11.7 g/t AuEq** (3.1 g/t Au, 4.6% Sb) from 618.6 m, including:
    - **0.7 m @ 15.2 g/t AuEq** (2.8 g/t Au, 6.6% Sb) from 618.9 m
  - **0.4 m @ 311.3 g/t AuEq** (291.3 g/t Au, 10.6% Sb) from 622.6 m (new vein set defined)
  - **3.4 m @ 56.0 g/t AuEq** (53.7 g/t Au, 1.2% Sb) from 661.1 m, including:
    - **1.9 m @ 98.2 g/t AuEq** (94.7 g/t Au, 1.9% Sb) from 661.7 m
- Drillhole SDDSC120 drilled east to west across Rising Sun and beneath Golden Dyke, intersected five mineralised domains and discovered **a new mineralised vein set 450 m vertically down dip below previous drilling at Golden Dyke**, within a parallel mineralised zone (a new “golden ladder”) in the footwall. Although of moderate grade, this very large step out is considered extremely encouraging as it shows, for the first time the mineral system continuing 450 m below the main historic mines on the project. Selected highlights include:
  - **2.7 m @ 6.1 g/t AuEq** (4.5 g/t Au, 0.8% Sb) from 600.4 m, including:
    - **0.9 m @ 12.9 g/t AuEq** (9.6 g/t Au, 1.7% Sb) from 602.1 m
  - **0.5 m @ 3.7 g/t AuEq** (3.7 g/t Au, 0.0% Sb) from 937.0 m (parallel zone in footwall)
- **A fifth drill rig has arrived at site** and is drilling at the Christina prospect located 500 m west of Golden Dyke. Eight drill holes on the project are currently being processed and analysed, with five holes in progress.

### SOUTHERN CROSS GOLD LTD

Level 21, 459 Collins Street, Melbourne Vic 3000 Australia  
 Justin Mouchacca - Company Secretary  
 p: +61 3 8630 3321 e: jm@southerncrossgold.com.au  
 Nicholas Mead - Investor Relations  
 p: +61 415 153 122 e: info@southerncrossgold.com.au

ABN: 70 652 166 795  
 ASX Code: SXG  
 Issued Capital: 195.9M fully paid shares

**Southern Cross Gold's Managing Director, Michael Hudson, states,** *"Once again Sunday Creek delivers continued success on multiple fronts.*

*"Intersecting mineralisation 450 m down dip below Golden Dyke in a parallel structure speaks to the multiple opportunities to extend the volume of mineralisation down dip. Although moderate grade, this very large step shows, for the first time, the mineral system continuing 450 m below the main historic mines on the project. It also leads to further opportunities to multiple "golden ladder" host structures. Further drilling is of course required to demonstrate how the system will develop in these areas, which we are already undertaking. Given the success of the system getting better at depth in the adjacent Rising Sun and Apollo areas, we have high expectations.*

*"It is also encouraging to witness the success of the SDDSC121/121W1 drill pair confidently intersect high-grade mineralisation where predicted. This demonstrates the robustness of our geological model and the ability to increase ounces by targeting high-grade strike extensions of multiple vein sets. Additionally, the ability of the SXG team to monitor drill holes in real time and to make deviations to ensure holes are drilled to plan is also extremely positive.*

*"Now we have five rigs drilling at site, we look forward to more than doubling the metres drilled at Sunday Creek via the 60 km of drilling planned over the next year."*

### **Drill Hole Discussion**

Four drill holes (SDDSC114W1, 120, 121 and 121W1) are reported from the Rising Sun and Golden Dyke prospects (Figure 1 and Figure 2).

**SDDSC120** was designed to drill within and parallel to the dyke/breccia host, at a high angle to mineralised vein sets, across Rising Sun and further west to test mineralisation deep below Golden Dyke. This hole intersected five known mineralised domains within Rising Sun and one previously undrilled mineralised zone (**0.5 m @ 3.7 g/t AuEq from 937.0 m**) 450 m below previous drilling (SDDSC062) and 560 m below historic Golden Dyke workings. The footwall discovery was fortuitously tested earlier than planned as the hole exited the main dyke/breccia host sooner than expected.

Highlights from SDDSC120 include:

- **3.3 m @ 1.9 g/t AuEq** (1.3 g/t Au, 0.3% Sb) from 594.7 m, including:
  - **0.5 m @ 5.2 g/t AuEq** (3.6 g/t Au, 0.8% Sb) from 597.5 m
  - **0.4 m @ 9.0 g/t AuEq** (7.4 g/t Au, 0.9% Sb) from 600.4 m
- **2.7 m @ 6.1 g/t AuEq** (4.5 g/t Au, 0.8% Sb) from 600.4 m, including:
  - **0.9 m @ 12.9 g/t AuEq** (9.6 g/t Au, 1.7% Sb) from 602.1 m
- **0.6 m @ 4.5 g/t AuEq** (2.0 g/t Au, 1.3% Sb) from 621.3 m
- **10.3 m @ 1.5 g/t AuEq** (0.7 g/t Au, 0.4% Sb) from 639.0 m, including:
  - **0.3 m @ 7.6 g/t AuEq** (4.4 g/t Au, 1.7% Sb) from 642.4 m
- **0.5 m @ 3.7 g/t AuEq** (3.7 g/t Au, 0.0% Sb) from 937.0 m

**SDDSC121** was designed to test the footwall position of two mineralised domains and deviated against plan resulting in the need to deflect the hole with daughter hole **SDDSC121W1**. The daughter wedge commenced at 550 m downhole and successfully intercepted and added strike continuity to seven high-grade vein sets including one previously undefined mineralised domain between RS40 and RS50 (**0.4 m @ 311.3 g/t AuEq (291.3 g/t Au, 10.6% Sb) from 622.6 m**) by an average of 15 metres. **SDDSC121W1** extended the RS50 high-grade core shape down plunge by 30m with **3.4 m @ 56.0 g/t AuEq (53.7 g/t Au, 1.2% Sb)** including **1.9 m @ 98.2 g/t AuEq** (estimated true width ("ETW") of 0.8 m) from 661.1 m (Figure 3 and Figure 4).

The hole was drilled 68 m and 105 m down plunge respectively from SDDSC050 (7.0 m @ 8.0 g/t AuEq) and SDDSC107 (15.0 m @ 16.3 g/t Au Eq). SDDSC121W1 also contributed two further +100 g/t AuEq x m intercepts (at 2 m @ 1 g/t AuEq cutoff) bringing the cumulative total of +100 g/t AuEq x m intercepts to 43 at Sunday Creek.

Highlights from SDDSC121W1 include:

- **1.0 m @ 4.0 g/t AuEq** (1.3 g/t Au, 1.4% Sb) from 600.2 m, including:
  - **0.4 m @ 5.7 g/t AuEq** (1.9 g/t Au, 2.0% Sb) from 600.4 m
- **0.2 m @ 36.5 g/t AuEq** (14.9 g/t Au, 11.5% Sb) from 613.2 m
- **1.0 m @ 11.7 g/t AuEq** (3.1 g/t Au, 4.6% Sb) from 618.6 m, including:
  - **0.7 m @ 15.2 g/t AuEq** (2.8 g/t Au, 6.6% Sb) from 618.9 m
- **0.4 m @ 311.3 g/t AuEq** (291.3 g/t Au, 10.6% Sb) from 622.6 m
- **4.6 m @ 1.1 g/t AuEq** (0.5 g/t Au, 0.4% Sb) from 628.5 m
  - **0.2 m @ 11.3 g/t AuEq** (6.3 g/t Au, 2.7% Sb) from 632.3 m
- **2.9 m @ 0.9 g/t AuEq** (0.4 g/t Au, 0.3% Sb) from 637.5 m
- **2.6 m @ 1.0 g/t AuEq** (0.3 g/t Au, 0.4% Sb) from 643.7 m
- **3.4 m @ 56.0 g/t AuEq** (53.7 g/t Au, 1.2% Sb) from 661.1 m, including:
  - **1.9 m @ 98.2 g/t AuEq** (94.7 g/t Au, 1.9% Sb) from 661.7 m
- **0.4 m @ 6.9 g/t AuEq** (1.9 g/t Au, 2.7% Sb) from 666.9 m
- **1.7 m @ 2.2 g/t AuEq** (1.4 g/t Au, 0.4% Sb) from 748.3 m
- **2.3 m @ 1.0 g/t AuEq** (0.4 g/t Au, 0.3% Sb) from 799.9 m
- **2.8 m @ 1.2 g/t AuEq** (1.0 g/t Au, 0.1% Sb) from 826.1 m
- **2.4 m @ 1.3 g/t AuEq** (0.8 g/t Au, 0.2% Sb) from 850.3 m
- **1.3 m @ 6.0 g/t AuEq** (6.0 g/t Au, 0.0% Sb) from 892.7 m, including:
  - **0.2 m @ 38.8 g/t AuEq** (38.7 g/t Au, 0.1% Sb) from 893.1 m
- **0.8 m @ 3.4 g/t AuEq** (3.4 g/t Au, 0.0% Sb) from 913.4 m

**SDDSC114W1** was drilled to test the hanging wall location of several Rising Sun vein sets, however the hole deviated north away from the mineralised zone and only intercepted periphery/background mineralisation of two vein sets (Figure 3.)

### Pending Results and Update

Eight holes (SDDSC122, 122W1, 123-127, 050W1) are currently being processed and analysed, with five holes (SDDSC128-131, 050W2) in progress (Figure 1 and Figure 2).

### About Sunday Creek

The Sunday Creek epizonal-style gold project is located 60 km north of Melbourne within 19,365 hectares of granted exploration tenements. SXG is also the freehold landholder of 133.29 hectares that form the key portion in and around the main drilled area at the Sunday Creek Project.

Gold and antimony form in a relay of vein sets that cut across a steeply dipping zone of intensely altered rocks (the "host"). When observed from above, the host resembles the side rails of a ladder, where the sub-vertical mineralised vein sets are the rungs that extend from surface to depth. At Apollo and Rising Sun these

individual 'rungs' have been defined over 350 m depth extent from surface to 550 m below surface, are 10 m to 20 m wide, and 20 m to 100 m in strike.

Cumulatively, 126 drill holes for 55,027 have been reported by SXG (and Mawson Gold Ltd) from Sunday Creek since late 2020. An additional 10 holes for 439 m from Sunday Creek were abandoned due to deviation or hole conditions. Fourteen drillholes for 2,383 m have been reported regionally outside of the main Sunday Creek drill area. A total of 64 historic drill holes for 5,599 m were completed from the late 1960s to 2008. The project now contains a total of forty-three (43) >100 g/t AuEq \* m and forty-nine (49) >50 to 100 g/t AuEq \* m drill holes by applying a 2 m @ 1 g/t lower cut.

Our systematic drill program is strategically targeting these significant vein formations, initially these have been defined over 1,350 m strike of the host from Christina to Apollo prospects, of which approximately 620 m has been more intensively drill tested (Rising Sun to Apollo). At least 50 'rungs' have been defined to date, defined by high-grade intercepts (20 g/t to >7,330 g/t Au) along with lower grade edges. Ongoing step-out drilling is aiming to uncover the potential extent of this mineralised system.

Geologically, the project is located within the Melbourne Structural Zone in the Lachlan Fold Belt. The regional host to the Sunday Creek mineralisation is an interbedded turbidite sequence of siltstones and minor sandstones metamorphosed to sub-greenschist facies and folded into a set of open north-west trending folds.

### Further Information

Further discussion and analysis of the Sunday Creek project is available through the interactive Vrify 3D animations, presentations and videos all available on the SXG website. These data, along with an interview on these results with Managing Director Michael Hudson, with a 3D Leapfrog presentation, can be viewed at [www.southerncrossgold.com.au](http://www.southerncrossgold.com.au)

No upper gold grade cut is applied in the averaging and intervals are reported as drill thickness. However, during future Mineral Resource studies, the requirement for assay top cutting will be assessed.

Figures 1 to 5 show project location, plan and longitudinal views of drill results reported here and Tables 1 to 3 provide collar and assay data. The true thickness of the mineralised intervals reported individually as estimated true widths ("ETW"), otherwise they are interpreted to be approximately 55-65% of the sampled thickness for other reported holes. Lower grades were cut at 1.0 g/t AuEq lower cutoff over a maximum width of 2 m with higher grades cut at 5.0 g/t AuEq lower cutoff over a maximum of 1 m width unless specified.

### Gold Equivalent Calculation

SXG considers that both gold and antimony that are included in the gold equivalent calculation ("AuEq") have reasonable potential to be recovered at Sunday Creek, given current geochemical understanding, historic production statistics and geologically analogous mining operations. Historically, ore from Sunday Creek was treated onsite or shipped to the Costerfield mine, located 54 km to the northwest of the project, for processing during WW1. SXG considers that it is appropriate to adopt the same gold equivalent variables as Mandalay Resources Ltd in its Mandalay Technical Report, 2024 dated 28 March 2024. The gold equivalence formula used by Mandalay Resources was calculated using Costerfield's 2023 production costs, using a gold price of US\$1,900 per ounce, an antimony price of US\$12,000 per tonne and 2023 total year metal recoveries of 94% for gold and 89% for antimony, and is as follows:

$$AuEq = Au (g/t) + 1.88 \times Sb (\%)$$

Based on the latest Costerfield calculation and given the similar geological styles and historic toll treatment of Sunday Creek mineralisation at Costerfield, SXG considers that a  $AuEq = Au (g/t) + 1.88 \times Sb (\%)$  is appropriate to use for the initial exploration targeting of gold-antimony mineralisation at Sunday Creek.

- Ends -

This announcement has been approved for release by the Board of Southern Cross Gold Ltd.



## Competent Person Statement

Information in this announcement that relates to new exploration results contained in this report is based on information compiled by Mr. Michael Hudson, a Fellow of the Australasian Institute of Mining and Metallurgy. He is the Managing Director of Southern Cross Gold Ltd. He has sufficient experience which is relevant to the style of mineralisation and types of deposits under consideration and to the activity being undertaking to qualify as a Competent Person as defined in the 2012 edition of the Australasian Code for Reporting of Exploration Results, Mineral Resources and Ore Reserves (the JORC Code). Michael Hudson has consented to the inclusion in this report of the matters based on this information in the form and context in which it appears.

Certain information in this announcement that relates to prior exploration results is extracted from the Independent Geologist's Report dated 16 March 2022 which was issued with the consent of the Competent Person, Mr Terry C. Lees. The report is included the Company's prospectus dated 17 March 2022 which was released as an announcement to ASX on 12 May 2022 and is available at [www2.asx.com.au](http://www2.asx.com.au) under code "SXG". The Company confirms that it is not aware of any new information or data that materially affects the information related to exploration results included in the original market announcement. The Company confirms that the form and context of the Competent Persons' findings in relation to the report have not been materially modified from the original market announcement.

Certain information in this announcement also relates to prior drill hole exploration results, are extracted from the following announcements, which are available to view on [www.southerncrossgold.com.au](http://www.southerncrossgold.com.au):

- [21 November 2022](#) SDDSC050, [14 December, 2022](#) SDDSC050, [28 February, 2023](#) SDDSC053, [1 May 2023](#) SDDSC059, [28 August 2023](#) SDDSC078, [5 September, 2023](#) SDDSC077B, [12 October, 2023](#) SDDL003 & 4, [23 October, 2023](#) SDDSC082, [9 November, 2023](#) SDDSC091, [14 December, 2023](#) SDDSC092, [8 February, 2024](#) SDDSC)94A, 100, 102 & 104, [5 March, 2024](#) SDDSC107, [15 April, 2024](#) SDDSC110, [27 May 2024](#) SDDSC117, [13 June 2024](#) SDDSC118.

The Company confirms that it is not aware of any new information or data that materially affects the information included in the original document/announcement and the Company confirms that the form and context in which the Competent Person's findings are presented have not materially modified from the original market announcement.

**For further information, please contact:**

**Justin Mouchacca, Company Secretary, [jm@southerncrossgold.com.au](mailto:jm@southerncrossgold.com.au), +61 3 8630 3321**

**Nicholas Mead, Corporate Development, [nm@southerncrossgold.com.au](mailto:nm@southerncrossgold.com.au), +61 415 153 122**

Figure 1: Sunday Creek plan view showing selected results from SDDSC114W1, 120, 121, 121W1 reported here (blue highlighted box, orange trace), selected prior reported drill holes and pending holes.

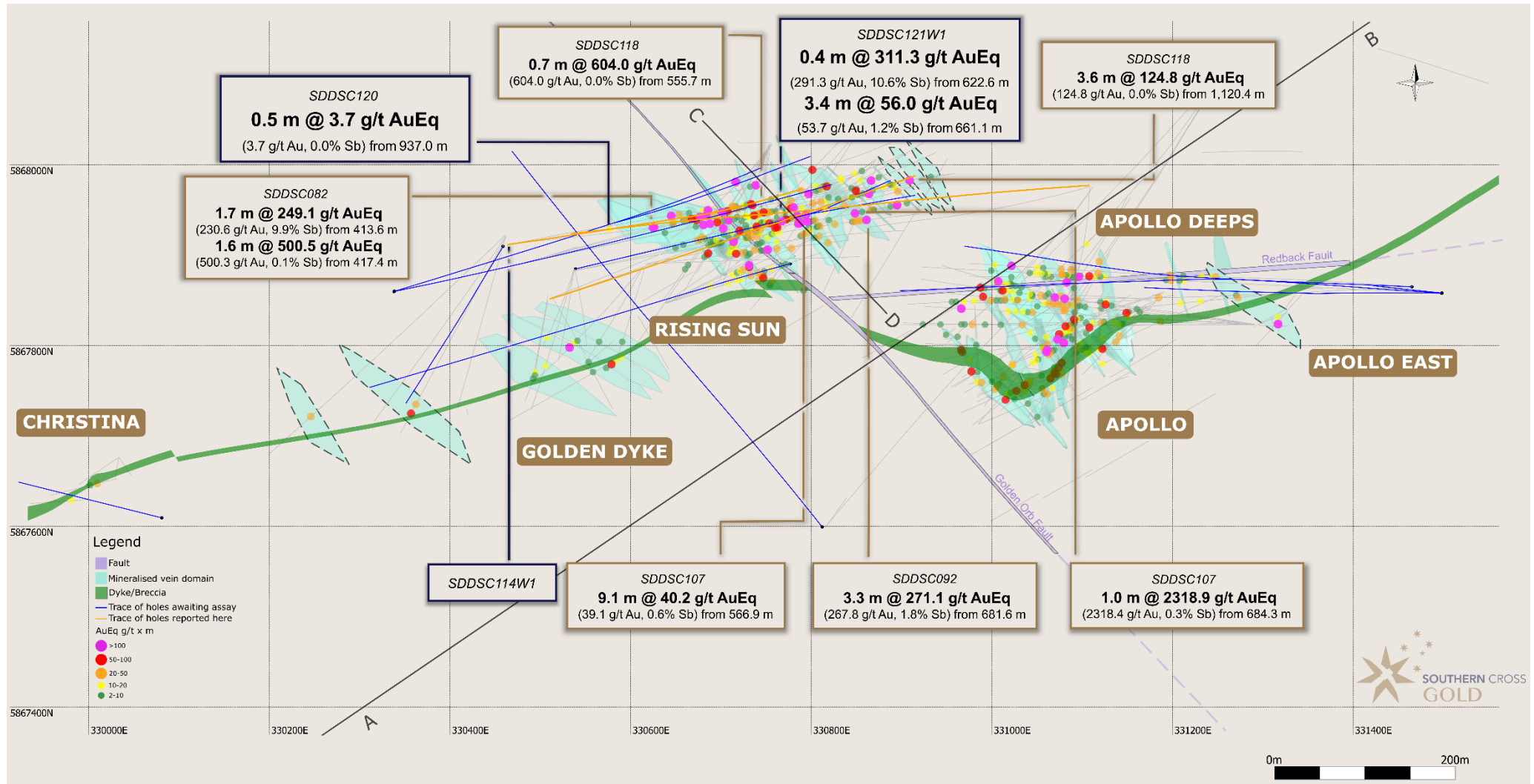


Figure 2: Sunday Creek longitudinal section across A-B in the plane of the dyke breccia/altered sediment host looking towards the north (striking 236 degrees) showing mineralised veins sets. Showing SDDSC114W1, 120, 121, 121W1 reported here (blue highlighted box, orange trace) with selected intersections and prior reported drill holes. Down dip extension 450 m below Golden Dyke is in a parallel host structure. For location refer to Figure 1.

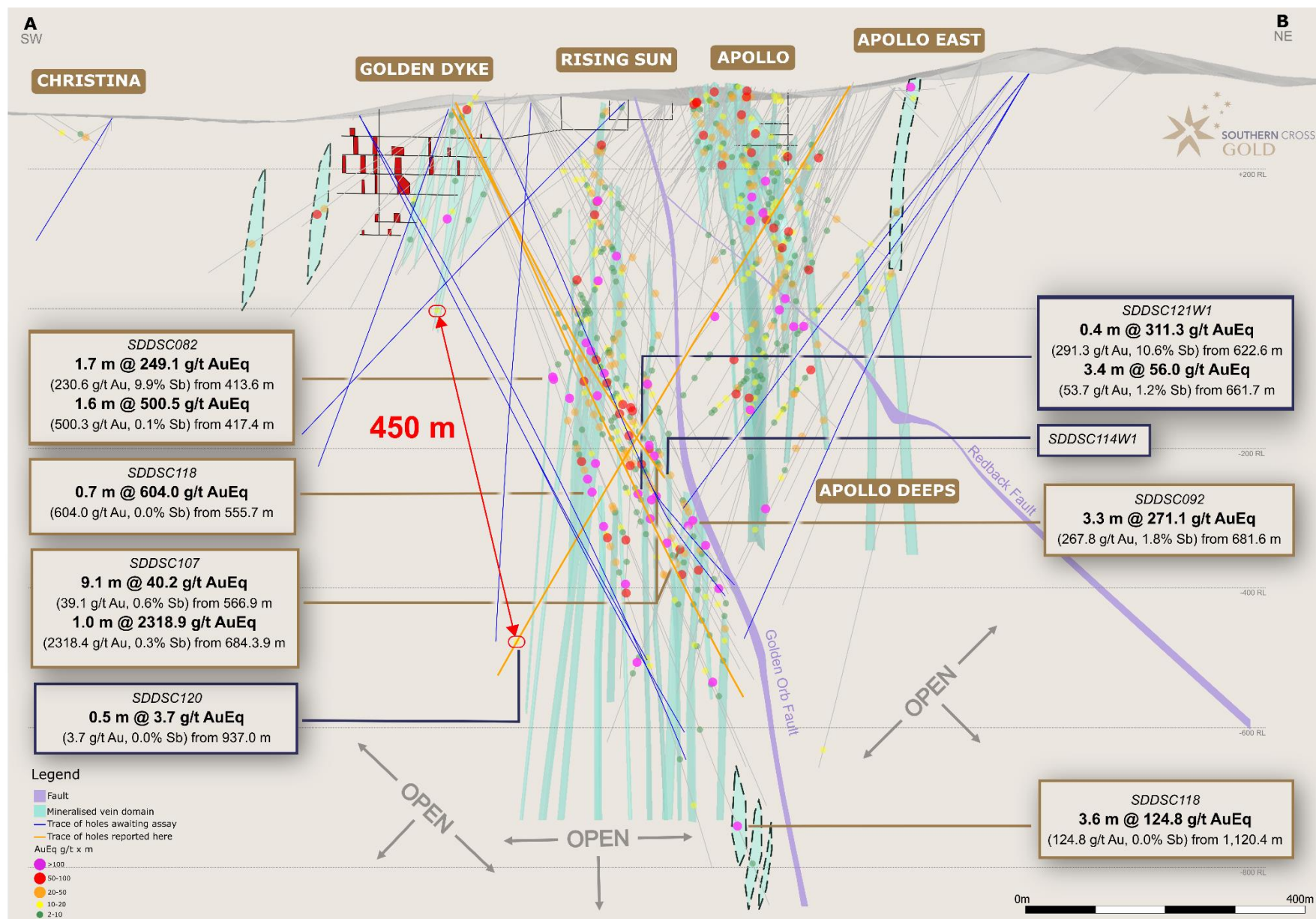


Figure 3: Showing long section across C-D in the plane of the RS-50 (striking 136 degrees) vein set drilled by SDDSC114W1 (peripheral hit), 120 (peripheral hit) and 121W1 (hit into high grade domain) showing continuity of mineralisation over a 565 m down dip distance. High grade domains shown in darker blue. Inset E-F shown in Figure 4. For location refer to Figure 1.

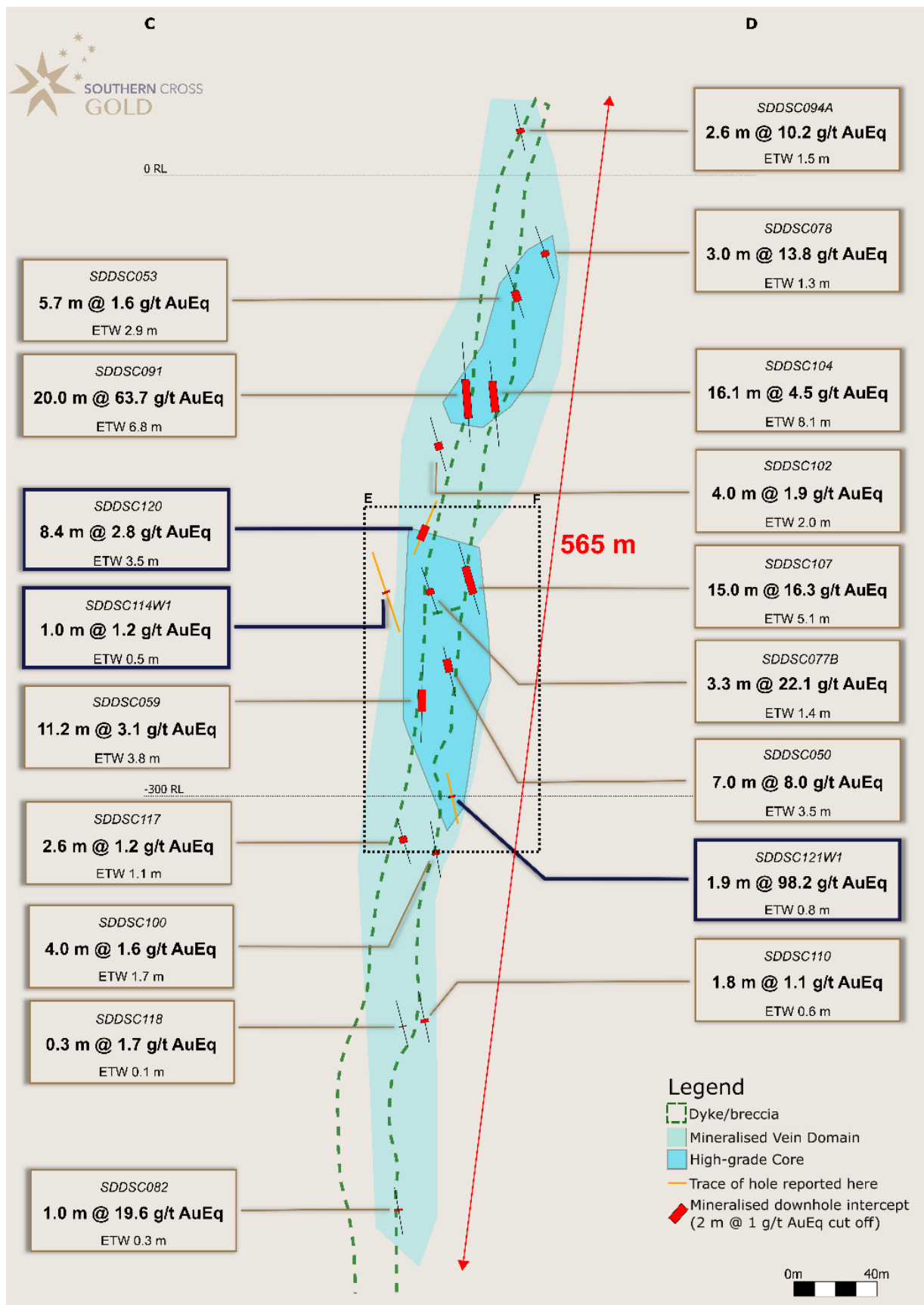




Figure 4: Showing inset referenced in Figure 3. Long section in the plane of the RS-50 High-Grade vein set core.

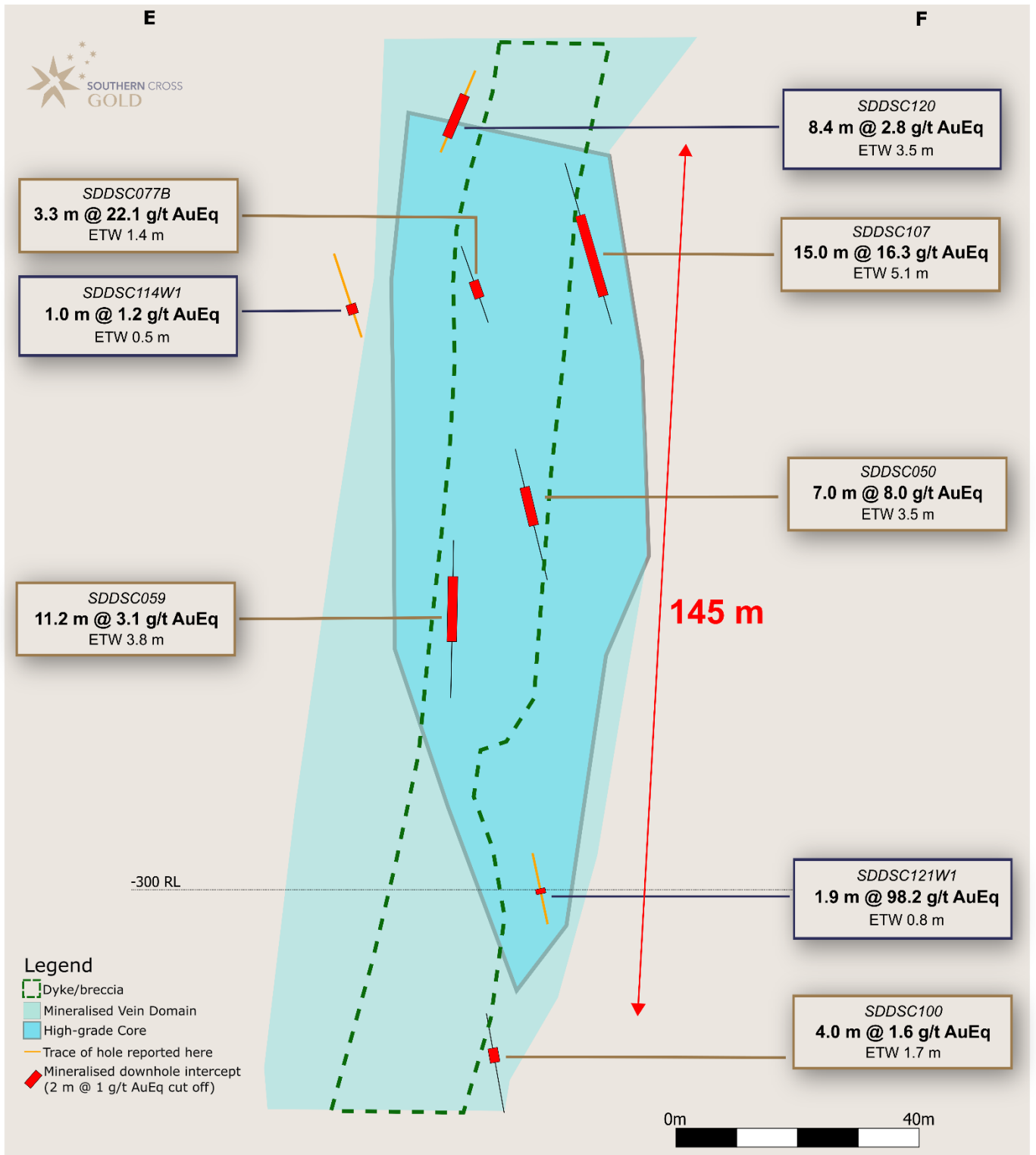


Figure 5: Sunday Creek regional plan view showing LiDAR, soil sampling, structural framework, regional historic epizonal gold mining areas and broad regional areas (Tonstal, Consols and Leviathan) tested by 12 holes for 2,383 m drill program. The regional drill areas are at Tonstal, Consols and Leviathan located 4,000-7,500 m along strike from the main drill area at Golden Dyke- Apollo.

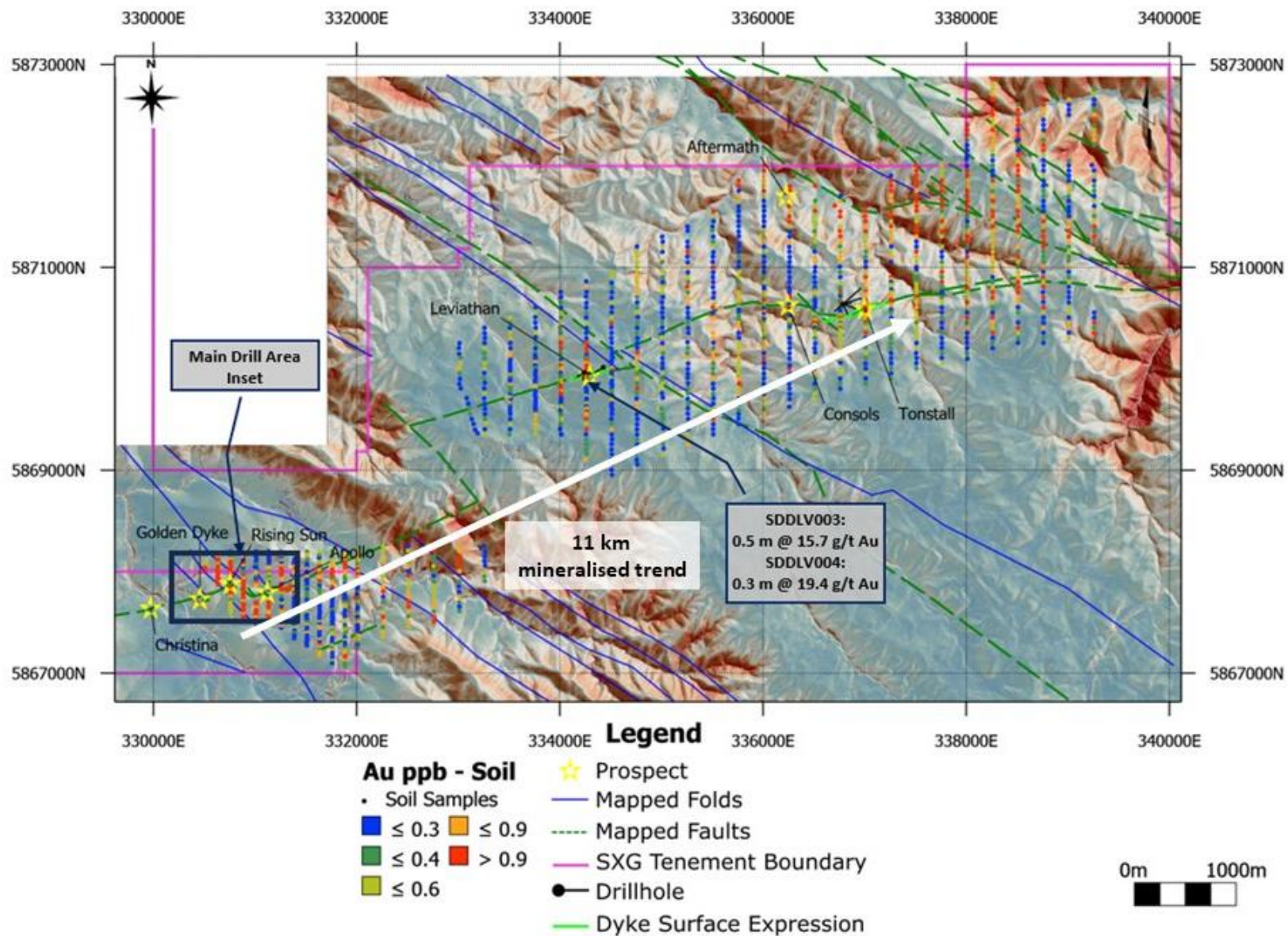
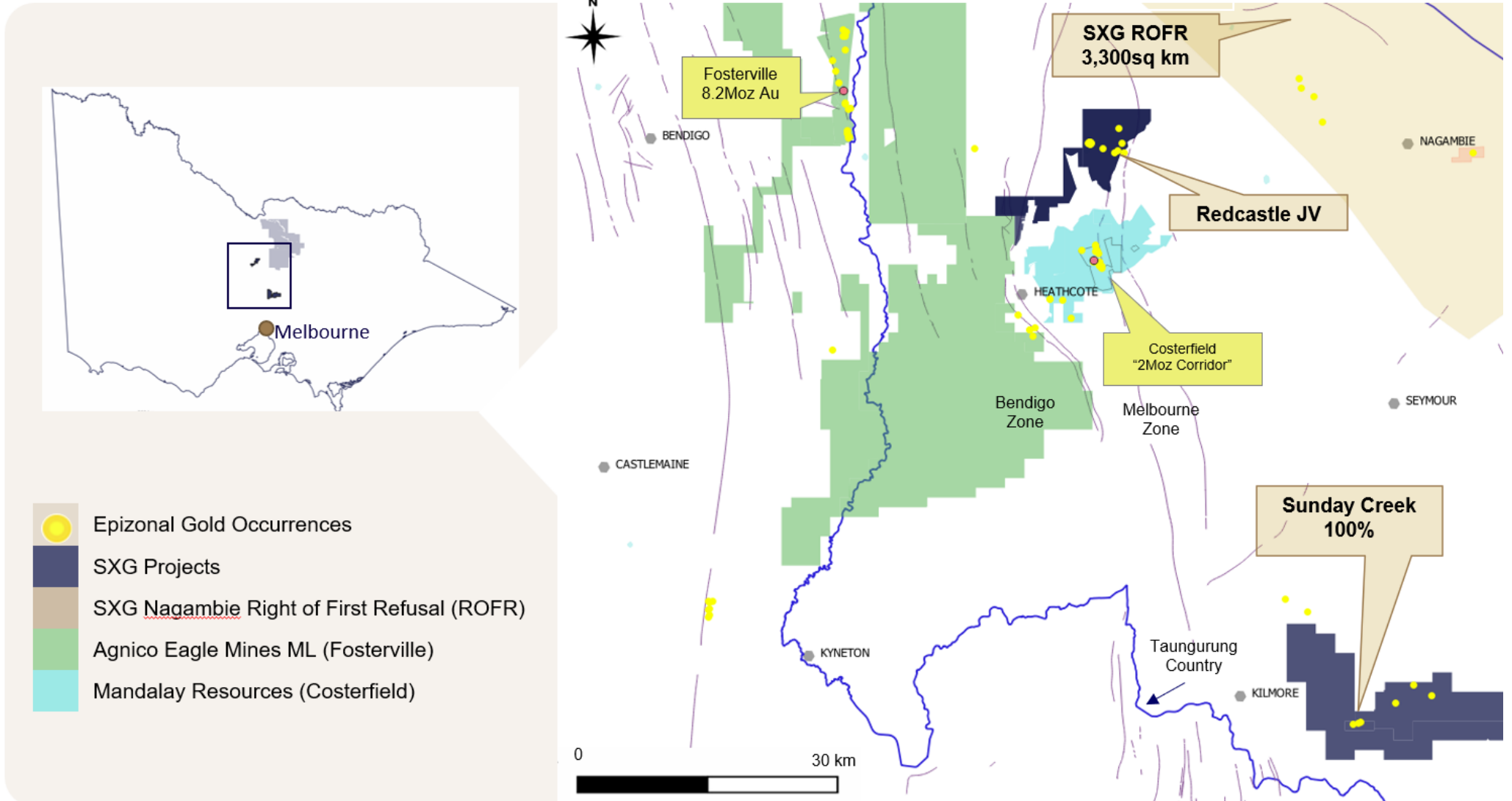


Figure 6: Location of the Sunday Creek project, along with SXG's other Victoria projects.



**Table 1: Drill collar summary table for recent drill holes in progress.**

Hole_ID	Depth (m)	Prospect	East GDA94_Z55	North GDA94_Z55	Elevation	Azimuth	Plunge
SDDSC111	496.7	Apollo	331291	5867823	316.8	270	-38
SDDSC112	490.9	Apollo	331464	5867865	333	267	-42
SDDSC112W1	766.4	Apollo	331329	5867859	200	267	-42
SDDSC113	905.5	Rising Sun	330511	5867853	296.6	67.5	-63.5
SDDSC114	878.6	Rising Sun	330464	5867914	286.6	82	-58
SDDSC115	17.6	Rising Sun	330464	5867912	286.6	83	-58.5
SDDSC115A	923.6	Rising Sun	330464	5867912	286.7	83	-59
SDDSC116	682.6	Rising Sun	331465	5867865	333.3	272.5	-41.5
SDDSC117	1101	Rising Sun	330510	5867852	296.5	70.5	-64.5
SDDSC118	1246	Rising Sun	330464	5867912	286.6	80	-64.5
SDDSC119	854.1	Apollo	331498	5867858	336.7	272.5	-45.2
SDDSC120	1022.5	Rising Sun	331110	5867976	319.5	266.5	-55
SDDSC121	588.7	Rising Sun	330510	5867852	296.6	72	-63
SDDSC122	889.89	Rising Sun	330338	5867860	267.7	74	-62
SDDSC114W1	625.1	Rising Sun	330464	5867914	286.6	82	-58
SDDSC119W1	643	Apollo	331498	5867858	336.7	272.5	-45.2
SDDSC123	124.3	Apollo	331499	5867859	337	276	-52
SDDSC124	969.3	Apollo	331499	5867859	337	274	-52.2
SDDSC121W1	953.4	Rising Sun	330510	5867852	296.6	72	-63.8
SDDSC125	551.7	Golden Dyke	330462	5867920	285.6	212	-68
SDDSC126	941.4	Rising Sun	330815	5867599	295.7	321.6	-54
SDDSC122W1	1007.8	Rising Sun	330338	5867860	276.5	72	-61.4
SDDSC050W1	797.1	Rising Sun	330539	5867885	295.3	77	-63
SDDSC127	483.2	Apollo	331498	5867858	336.9	271.3	-43.3
SDDSC128	In progress plan 840 m	Apollo	331465	5867867	333.1	272.6	-43.3
SDDSC129	In progress plan 1050 m	Rising Sun	330388	5867860	276.5	77.3	-57.3
SDDSC130	In progress plan 680 m	Golden Dyke	330777	5867891	295.9	255	-42
SDDSC050W2	In progress plan 798 m	Rising Sun	330539	5867885	295.3	77	-63
SDDSC131	In progress plan 240 m	Christina	330081	5867609	273.1	284	-47



**Table 2: Tables of mineralised drill hole intersections reported from SDDSC120 and 121W1 (no intersections above cutoff for SDDSC114W1 and SDDSC121) using two cutoff criteria. Lower grades cut at 1.0 g/t AuEq lower cutoff over a maximum of 2 m with higher grades cut at 5.0 g/t AuEq cutoff over a maximum of 1 m.**

Hole-ID	From (m)	To (m)	Length (m)	Au g/t	Sb%	AuEq g/t
SDDSC120	594.68	597.98	3.3	1.3	0.3	1.9
including	597.52	597.98	0.46	3.6	0.8	5.2
including	600.35	600.71	0.36	7.4	0.9	9.0
SDDSC120	600.35	603.06	2.71	4.5	0.8	6.1
including	602.13	603.06	0.93	9.6	1.7	12.9
SDDSC120	621.25	621.9	0.65	2.0	1.3	4.5
SDDSC120	639	649.3	10.3	0.7	0.4	1.5
SDDSC120	667.3	669.62	2.32	0.7	0.1	0.9
SDDSC121W1	600.17	601.21	1.04	1.3	1.4	4.0
including	600.38	600.82	0.44	1.9	2.0	5.7
SDDSC121W1	613.21	613.41	0.2	14.9	11.5	36.5
SDDSC121W1	618.58	619.59	1.01	3.1	4.6	11.7
including	618.9	619.59	0.69	2.8	6.6	15.2
SDDSC121W1	622.6	623.02	0.42	291.3	10.6	311.3
SDDSC121W1	628.5	633.11	4.61	0.5	0.4	1.1
including	632.27	632.5	0.23	6.3	2.7	11.3
SDDSC121W1	637.54	640.45	2.91	0.4	0.3	0.9
SDDSC121W1	643.74	646.3	2.56	0.3	0.4	1.0
SDDSC121W1	661.1	664.46	3.36	53.7	1.2	56.0
including	661.69	663.59	1.9	94.7	1.9	98.2
SDDSC121W1	666.92	667.35	0.43	1.9	2.7	6.9
SDDSC121W1	748.27	749.95	1.68	1.4	0.4	2.2
SDDSC121W1	799.89	802.15	2.26	0.4	0.3	1.0
SDDSC121W1	826.09	828.85	2.76	1.0	0.1	1.2
SDDSC121W1	850.3	852.68	2.38	0.8	0.2	1.3
SDDSC121W1	892.65	893.98	1.33	6.0	0.0	6.0
including	893.09	893.25	0.16	38.7	0.1	38.8
SDDSC121W1	913.38	914.15	0.77	3.4	0.0	3.4

**Table 3: All individual assays reported from SDDSC114W1, SDDSC120, SDDSC121 and SDDSC121W1 reported here >0.1g/t AuEq.**

Hole-ID	From (m)	To (m)	Length (m)	Au g/t	Sb%	AuEq g/t
SDDSC114W1	460.87	461.2	0.33	0.1	0.2	0.5
SDDSC114W1	478.1	479.4	1.3	0.1	0.0	0.2
SDDSC114W1	479.4	479.7	0.3	0.6	0.0	0.6
SDDSC114W1	493.4	493.92	0.52	0.1	0.0	0.1
SDDSC114W1	493.92	494.03	0.11	0.5	3.1	6.2
SDDSC114W1	494.03	494.34	0.31	0.3	0.0	0.4
SDDSC114W1	539	540	1	0.1	0.0	0.1
SDDSC114W1	568.71	568.92	0.21	0.1	0.0	0.1
SDDSC114W1	572	572.9	0.9	0.2	0.0	0.2
SDDSC114W1	572.9	573.14	0.24	2.8	0.7	4.0
SDDSC114W1	573.14	573.3	0.16	0.2	0.0	0.3
SDDSC114W1	573.3	574	0.7	0.1	0.0	0.1
SDDSC114W1	574	574.49	0.49	0.3	0.0	0.4
SDDSC114W1	577.42	577.85	0.43	0.4	0.0	0.4
SDDSC114W1	580.85	581.07	0.22	0.2	0.0	0.2
SDDSC114W1	581.07	581.92	0.85	0.2	0.0	0.2
SDDSC114W1	581.92	582.11	0.19	2.7	0.0	2.7
SDDSC114W1	582.11	582.9	0.79	0.9	0.0	0.9
SDDSC114W1	582.9	583.17	0.27	0.1	0.0	0.1
SDDSC114W1	599.5	600.73	1.23	0.1	0.0	0.1
SDDSC120	103.12	103.52	0.4	0.2	0.0	0.2
SDDSC120	527.6	528.6	1	0.1	0.0	0.1
SDDSC120	552.05	552.5	0.45	0.2	0.0	0.2
SDDSC120	552.5	553	0.5	0.1	0.0	0.1
SDDSC120	553.93	554.2	0.27	0.2	0.0	0.2
SDDSC120	562.55	562.85	0.3	0.1	0.0	0.1
SDDSC120	562.85	563	0.15	0.2	0.0	0.2
SDDSC120	563.65	563.82	0.17	0.6	0.7	1.9
SDDSC120	566.25	566.75	0.5	0.2	0.0	0.2
SDDSC120	568.51	569.2	0.69	0.2	0.0	0.2
SDDSC120	571.62	571.76	0.14	1.6	2.0	5.3
SDDSC120	572.27	572.97	0.7	0.2	0.0	0.2
SDDSC120	573.88	574.94	1.06	0.2	0.0	0.3
SDDSC120	574.94	575.53	0.59	0.5	0.0	0.5
SDDSC120	575.53	576.2	0.67	0.6	0.0	0.6
SDDSC120	576.2	577.09	0.89	0.6	0.0	0.6
SDDSC120	577.09	577.36	0.27	0.6	0.0	0.6
SDDSC120	577.36	578.03	0.67	0.3	0.0	0.3
SDDSC120	579.45	579.9	0.45	0.2	0.0	0.2
SDDSC120	579.9	580.25	0.35	0.2	0.0	0.2

SDDSC120	584.2	584.74	0.54	0.6	0.1	0.7
SDDSC120	592.07	593.03	0.96	0.2	0.0	0.2
SDDSC120	594.68	595.02	0.34	0.5	0.4	1.2
SDDSC120	595.02	595.32	0.3	2.5	1.3	5.0
SDDSC120	595.32	595.7	0.38	0.5	0.1	0.6
SDDSC120	595.7	596.7	1	0.1	0.0	0.1
SDDSC120	596.7	597	0.3	4.1	0.4	4.8
SDDSC120	597	597.52	0.52	0.1	0.0	0.2
SDDSC120	597.52	597.98	0.46	3.6	0.8	5.2
SDDSC120	597.98	598.6	0.62	0.2	0.1	0.3
SDDSC120	599.25	600.35	1.1	0.1	0.0	0.1
SDDSC120	600.35	600.71	0.36	7.4	0.9	9.0
SDDSC120	600.71	601	0.29	0.2	0.2	0.5
SDDSC120	601	601.37	0.37	0.8	0.6	2.0
SDDSC120	601.37	601.74	0.37	0.2	0.2	0.6
SDDSC120	601.74	602.13	0.39	0.2	0.1	0.3
SDDSC120	602.13	602.43	0.3	6.7	4.8	15.7
SDDSC120	602.43	602.73	0.3	0.1	0.1	0.2
SDDSC120	602.73	602.96	0.23	0.6	0.3	1.1
SDDSC120	602.96	603.06	0.1	68.0	0.9	69.6
SDDSC120	605.51	606.1	0.59	0.2	0.0	0.2
SDDSC120	609.57	609.87	0.3	0.3	0.0	0.3
SDDSC120	611.8	612.2	0.4	0.2	0.0	0.3
SDDSC120	612.2	612.68	0.48	0.7	0.0	0.7
SDDSC120	621.25	621.65	0.4	0.5	1.7	3.7
SDDSC120	621.65	621.9	0.25	4.5	0.7	5.8
SDDSC120	621.9	622.7	0.8	0.2	0.1	0.3
SDDSC120	625.3	625.8	0.5	0.2	0.5	1.2
SDDSC120	626.26	627	0.74	1.1	0.0	1.1
SDDSC120	627.6	627.95	0.35	1.4	0.0	1.4
SDDSC120	634.65	635.34	0.69	0.2	0.1	0.3
SDDSC120	636.75	637.25	0.5	0.2	0.2	0.6
SDDSC120	637.25	637.9	0.65	0.2	0.0	0.3
SDDSC120	639	639.7	0.7	1.1	0.2	1.4
SDDSC120	640.5	640.85	0.35	0.3	0.4	1.1
SDDSC120	640.85	641.7	0.85	0.1	0.1	0.2
SDDSC120	641.7	642	0.3	4.2	0.2	4.5
SDDSC120	642	642.4	0.4	0.5	0.3	1.0
SDDSC120	642.4	642.65	0.25	4.4	1.7	7.6
SDDSC120	642.65	643.06	0.41	0.2	0.3	0.8
SDDSC120	643.06	643.45	0.39	1.2	1.4	3.9
SDDSC120	643.45	643.8	0.35	0.5	1.8	3.9
SDDSC120	643.8	644.15	0.35	0.7	1.9	4.3

SDDSC120	644.15	644.45	0.3	0.2	0.2	0.5
SDDSC120	644.45	644.7	0.25	0.6	1.1	2.7
SDDSC120	644.7	644.97	0.27	0.2	0.2	0.7
SDDSC120	644.97	645.59	0.62	1.7	1.0	3.5
SDDSC120	646.1	646.4	0.3	0.2	0.0	0.3
SDDSC120	646.4	647	0.6	0.3	0.0	0.4
SDDSC120	647	647.3	0.3	3.0	0.3	3.6
SDDSC120	647.3	648.15	0.85	0.3	0.2	0.6
SDDSC120	649.05	649.3	0.25	0.6	0.5	1.5
SDDSC120	651.1	651.95	0.85	0.3	0.0	0.3
SDDSC120	651.95	652.25	0.3	0.6	0.1	0.8
SDDSC120	652.25	652.6	0.35	1.2	0.2	1.5
SDDSC120	652.6	653.6	1	0.5	0.0	0.5
SDDSC120	654.18	654.55	0.37	1.9	0.1	2.1
SDDSC120	654.55	655.2	0.65	0.1	0.0	0.2
SDDSC120	656.9	657.45	0.55	0.3	0.0	0.4
SDDSC120	667.3	667.85	0.55	1.8	0.3	2.3
SDDSC120	668.6	669.2	0.6	0.3	0.1	0.4
SDDSC120	669.2	669.62	0.42	0.9	0.3	1.4
SDDSC120	669.62	669.8	0.18	0.4	0.1	0.5
SDDSC120	693.1	694.1	1	0.3	0.0	0.3
SDDSC120	698.1	698.68	0.58	0.3	0.0	0.4
SDDSC120	698.68	699.08	0.4	0.3	0.2	0.6
SDDSC120	732.57	732.87	0.3	0.1	0.0	0.1
SDDSC120	732.87	733.12	0.25	0.1	0.0	0.1
SDDSC120	738	738.5	0.5	0.3	0.1	0.5
SDDSC120	738.5	738.84	0.34	0.4	0.0	0.5
SDDSC120	738.84	739.11	0.27	0.4	0.1	0.5
SDDSC120	739.11	740.14	1.03	0.5	0.0	0.6
SDDSC120	740.14	740.3	0.16	2.0	1.4	4.6
SDDSC120	740.3	740.56	0.26	0.9	0.0	1.0
SDDSC120	799.53	800.13	0.6	0.2	0.0	0.2
SDDSC120	916.85	917.43	0.58	0.2	0.0	0.2
SDDSC120	919.74	920.59	0.85	0.1	0.0	0.1
SDDSC120	920.59	921.07	0.48	0.1	0.0	0.1
SDDSC120	933.4	934.02	0.62	0.2	0.0	0.2
SDDSC120	934.02	934.5	0.48	0.1	0.0	0.1
SDDSC120	936.72	937.02	0.3	0.2	0.0	0.2
SDDSC120	937.02	937.52	0.5	3.7	0.0	3.7
SDDSC120	937.52	938.06	0.54	0.2	0.0	0.2
SDDSC120	938.06	938.26	0.2	0.1	0.0	0.2
SDDSC120	939.83	940.37	0.54	0.1	0.0	0.1
SDDSC120	959.8	960.1	0.3	0.1	0.0	0.1



SDDSC120	960.1	960.4	0.3	1.0	0.0	1.0
SDDSC120	960.4	960.7	0.3	0.1	0.0	0.1
SDDSC121	270	270.8	0.8	0.3	0.0	0.3
SDDSC121	271.4	272	0.6	0.5	0.0	0.5
SDDSC121	272	272.6	0.6	0.7	0.0	0.7
SDDSC121	272.6	272.9	0.3	0.5	0.0	0.5
SDDSC121	272.9	273.2	0.3	0.2	0.0	0.2
SDDSC121	273.2	274	0.8	0.4	0.0	0.4
SDDSC121	274	274.4	0.4	0.2	0.0	0.3
SDDSC121	274.4	275.13	0.73	0.1	0.0	0.2
SDDSC121	275.81	276.3	0.49	0.3	0.0	0.3
SDDSC121	276.96	277.58	0.62	0.4	0.0	0.4
SDDSC121	277.58	278.1	0.52	0.2	0.0	0.2
SDDSC121	278.1	279	0.9	0.3	0.0	0.3
SDDSC121	279	279.9	0.9	0.3	0.0	0.3
SDDSC121	279.9	280.06	0.16	0.1	0.0	0.1
SDDSC121	281.15	281.41	0.26	0.1	0.0	0.1
SDDSC121	281.41	281.84	0.43	0.3	0.0	0.3
SDDSC121	281.84	282.12	0.28	0.4	0.0	0.4
SDDSC121	282.12	282.47	0.35	0.3	0.0	0.3
SDDSC121	282.96	283.15	0.19	1.2	0.0	1.2
SDDSC121	284.32	284.63	0.31	0.4	0.0	0.4
SDDSC121	287	288	1	0.3	0.0	0.3
SDDSC121	288.45	288.82	0.37	0.3	0.0	0.3
SDDSC121	288.82	289.52	0.7	0.3	0.0	0.3
SDDSC121	289.52	290	0.48	0.2	0.0	0.3
SDDSC121	290	291	1	0.2	0.0	0.2
SDDSC121	291	291.54	0.54	0.3	0.0	0.3
SDDSC121	294.88	295.78	0.9	0.1	0.0	0.1
SDDSC121	298.88	299.3	0.42	0.2	0.0	0.2
SDDSC121	299.3	299.58	0.28	0.7	0.0	0.7
SDDSC121	299.58	299.85	0.27	1.7	0.0	1.8
SDDSC121	299.85	300.17	0.32	1.2	0.0	1.2
SDDSC121	300.17	300.55	0.38	0.4	0.0	0.4
SDDSC121	302.9	303.71	0.81	0.1	0.0	0.1
SDDSC121	306.97	307.5	0.53	0.4	0.0	0.4
SDDSC121	307.5	308.46	0.96	0.2	0.0	0.2
SDDSC121	310.7	310.88	0.18	0.3	0.0	0.3
SDDSC121	310.88	311.12	0.24	0.2	0.0	0.2
SDDSC121	311.12	311.6	0.48	0.1	0.0	0.1
SDDSC121	311.6	312.29	0.69	0.2	0.0	0.2
SDDSC121	312.29	313.18	0.89	0.2	0.0	0.2
SDDSC121	313.51	313.76	0.25	0.7	1.3	3.1

SDDSC121	314.04	314.27	0.23	0.2	0.0	0.2
SDDSC121	314.27	314.9	0.63	0.2	0.0	0.2
SDDSC121	314.9	315.63	0.73	0.4	0.0	0.4
SDDSC121	315.63	316.5	0.87	0.2	0.0	0.2
SDDSC121	316.5	317.37	0.87	0.1	0.0	0.1
SDDSC121	317.37	317.78	0.41	0.2	0.0	0.2
SDDSC121	317.78	318.52	0.74	0.3	0.0	0.3
SDDSC121	318.52	319.11	0.59	0.3	0.0	0.3
SDDSC121	319.11	319.31	0.2	0.3	0.0	0.3
SDDSC121	319.31	319.6	0.29	0.1	0.0	0.1
SDDSC121	319.6	319.94	0.34	0.8	0.0	0.8
SDDSC121	319.94	320.22	0.28	0.6	0.0	0.6
SDDSC121	320.22	320.62	0.4	0.4	0.0	0.4
SDDSC121	320.62	321	0.38	1.8	0.0	1.8
SDDSC121	321	321.75	0.75	0.1	0.0	0.1
SDDSC121	321.75	322.35	0.6	0.3	0.0	0.3
SDDSC121	323.81	324.1	0.29	0.1	0.0	0.1
SDDSC121	329	330	1	0.2	0.0	0.2
SDDSC121	342.27	342.45	0.18	0.4	0.0	0.4
SDDSC121	342.45	343.3	0.85	0.4	0.0	0.4
SDDSC121	343.3	344.53	1.23	0.3	0.0	0.3
SDDSC121	344.53	344.83	0.3	0.3	0.0	0.3
SDDSC121	344.83	345.22	0.39	0.4	0.0	0.4
SDDSC121	345.22	345.87	0.65	0.3	0.0	0.3
SDDSC121	345.87	346.45	0.58	0.3	0.0	0.3
SDDSC121	346.45	347.13	0.68	0.5	0.0	0.5
SDDSC121	347.13	347.57	0.44	0.1	0.0	0.1
SDDSC121	352.45	352.8	0.35	0.2	0.0	0.2
SDDSC121	369.75	370.05	0.3	0.5	0.0	0.5
SDDSC121	384.4	385	0.6	0.2	0.0	0.2
SDDSC121	411.14	411.36	0.22	0.2	0.0	0.2
SDDSC121	500.25	501.25	1	0.2	0.0	0.2
SDDSC121	501.25	502	0.75	0.2	0.0	0.2
SDDSC121	502	502.45	0.45	1.6	0.2	2.0
SDDSC121	502.45	503	0.55	2.0	0.1	2.2
SDDSC121	503	504	1	1.2	0.4	1.9
SDDSC121	504	505	1	0.2	0.0	0.3
SDDSC121	505	506	1	0.1	0.0	0.2
SDDSC121	508.6	508.8	0.2	0.3	0.0	0.3
SDDSC121	509.9	511	1.1	0.2	0.0	0.2
SDDSC121	511	512	1	0.1	0.0	0.1
SDDSC121	512	513	1	0.2	0.0	0.2
SDDSC121	513	514	1	0.1	0.0	0.1

SDDSC121	514	514.6	0.6	0.3	0.0	0.4
SDDSC121	514.6	514.9	0.3	0.6	0.0	0.6
SDDSC121	514.9	515.35	0.45	0.9	0.4	1.6
SDDSC121	515.35	516	0.65	0.1	0.0	0.1
SDDSC121	517.6	517.85	0.25	0.2	0.1	0.3
SDDSC121	518.8	519.7	0.9	0.5	0.2	0.9
SDDSC121	519.7	520.7	1	0.7	0.5	1.6
SDDSC121	520.7	521.8	1.1	0.4	0.0	0.4
SDDSC121	521.8	522.8	1	0.1	0.0	0.1
SDDSC121	522.8	523.8	1	0.1	0.0	0.1
SDDSC121	526	527	1	0.3	0.1	0.4
SDDSC121	530	531	1	0.9	0.1	1.1
SDDSC121	534.1	534.3	0.2	7.7	10.0	26.5
SDDSC121	539.9	540.7	0.8	0.3	0.3	0.8
SDDSC121	540.7	541.7	1	0.1	0.1	0.2
SDDSC121	546.15	546.93	0.78	0.3	0.0	0.4
SDDSC121	546.93	547.45	0.52	0.1	0.0	0.1
SDDSC121	548.48	548.65	0.17	0.2	0.0	0.3
SDDSC121	552.35	552.75	0.4	0.2	0.2	0.6
SDDSC121	552.75	553.75	1	0.1	0.0	0.1
SDDSC121	555.75	556.06	0.31	0.1	0.0	0.1
SDDSC121	556.06	556.22	0.16	3.4	0.0	3.4
SDDSC121	556.22	556.65	0.43	0.2	0.0	0.2
SDDSC121	556.65	557.09	0.44	0.4	0.3	1.0
SDDSC121	559.66	559.96	0.3	0.1	0.0	0.1
SDDSC121	574.33	574.44	0.11	0.3	0.0	0.3
SDDSC121	577.37	578.17	0.8	0.2	0.0	0.2
SDDSC121	586.6	586.75	0.15	0.6	0.3	1.1
SDDSC121W1	548.9	549.01	0.11	0.1	0.0	0.2
SDDSC121W1	552.19	552.76	0.57	0.1	0.0	0.1
SDDSC121W1	556.35	556.89	0.54	0.1	0.0	0.1
SDDSC121W1	556.89	557.21	0.32	0.2	0.0	0.2
SDDSC121W1	557.21	557.31	0.1	1.6	0.0	1.7
SDDSC121W1	557.31	557.67	0.36	0.1	0.0	0.1
SDDSC121W1	568	568.25	0.25	0.4	0.0	0.4
SDDSC121W1	575.05	575.17	0.12	0.2	0.0	0.3
SDDSC121W1	578.62	578.78	0.16	0.2	0.0	0.3
SDDSC121W1	578.78	579.03	0.25	0.2	0.0	0.2
SDDSC121W1	587.36	587.46	0.1	0.8	0.0	0.9
SDDSC121W1	597.9	598.3	0.4	0.3	0.1	0.4
SDDSC121W1	598.3	599.58	1.28	0.2	0.0	0.2
SDDSC121W1	599.58	600.17	0.59	0.1	0.0	0.2
SDDSC121W1	600.17	600.38	0.21	1.4	0.0	1.5

SDDSC121W1	600.38	600.82	0.44	1.9	2.0	5.7
SDDSC121W1	600.82	601.21	0.39	0.6	1.4	3.3
SDDSC121W1	601.21	601.57	0.36	0.1	0.0	0.1
SDDSC121W1	602.5	602.92	0.42	0.4	0.3	0.9
SDDSC121W1	604.5	605.01	0.51	0.1	0.0	0.2
SDDSC121W1	605.54	605.85	0.31	0.3	1.9	3.8
SDDSC121W1	605.85	606.25	0.4	0.1	0.0	0.1
SDDSC121W1	608.33	608.63	0.3	0.3	0.2	0.7
SDDSC121W1	608.96	609.23	0.27	0.1	0.2	0.4
SDDSC121W1	609.23	609.51	0.28	0.1	0.4	0.9
SDDSC121W1	610.67	611.57	0.9	0.1	0.0	0.1
SDDSC121W1	611.57	612.15	0.58	0.1	0.0	0.1
SDDSC121W1	613.21	613.41	0.2	14.9	11.5	36.5
SDDSC121W1	613.41	613.72	0.31	0.3	0.0	0.4
SDDSC121W1	616	616.36	0.36	0.7	0.2	0.9
SDDSC121W1	616.36	616.77	0.41	0.4	0.0	0.4
SDDSC121W1	616.77	617.08	0.31	0.1	0.0	0.1
SDDSC121W1	618.58	618.9	0.32	3.9	0.2	4.3
SDDSC121W1	618.9	619	0.1	16.9	19.9	54.3
SDDSC121W1	619	619.15	0.15	1.4	15.0	29.6
SDDSC121W1	619.49	619.59	0.1	0.3	3.0	5.9
SDDSC121W1	622.6	622.85	0.25	110.0	5.1	119.6
SDDSC121W1	622.85	623.02	0.17	558.0	18.8	593.3
SDDSC121W1	623.02	623.35	0.33	0.2	0.1	0.3
SDDSC121W1	623.35	623.81	0.46	0.1	0.0	0.1
SDDSC121W1	625.89	626.15	0.26	0.5	0.0	0.6
SDDSC121W1	628.1	628.2	0.1	0.1	2.3	4.5
SDDSC121W1	628.9	629.1	0.2	0.1	0.8	1.6
SDDSC121W1	629.34	629.45	0.11	0.1	0.8	1.5
SDDSC121W1	631	631.25	0.25	0.5	0.7	1.8
SDDSC121W1	631.25	631.55	0.3	0.6	1.2	2.9
SDDSC121W1	631.55	631.75	0.2	0.8	0.6	1.9
SDDSC121W1	631.75	632.27	0.52	0.2	0.1	0.3
SDDSC121W1	632.27	632.5	0.23	6.3	2.7	11.3
SDDSC121W1	632.5	633.01	0.51	0.1	0.0	0.1
SDDSC121W1	633.01	633.11	0.1	0.5	0.7	1.8
SDDSC121W1	633.11	633.41	0.3	0.2	0.2	0.6
SDDSC121W1	633.41	634	0.59	0.1	0.1	0.2
SDDSC121W1	635.1	635.2	0.1	0.2	0.1	0.3
SDDSC121W1	636	636.63	0.63	0.3	0.4	1.0
SDDSC121W1	636.63	637.54	0.91	0.1	0.0	0.1
SDDSC121W1	637.54	637.64	0.1	0.0	0.8	1.4
SDDSC121W1	637.64	638	0.36	0.1	0.0	0.1



SDDSC121W1	638	638.37	0.37	0.4	0.4	1.1
SDDSC121W1	638.37	638.7	0.33	0.2	0.1	0.4
SDDSC121W1	638.7	638.91	0.21	3.2	0.7	4.5
SDDSC121W1	639.9	640.45	0.55	0.4	0.6	1.6
SDDSC121W1	640.45	640.95	0.5	0.1	0.0	0.1
SDDSC121W1	640.95	641.15	0.2	0.9	0.0	0.9
SDDSC121W1	641.15	641.45	0.3	0.1	0.1	0.2
SDDSC121W1	641.45	641.88	0.43	0.1	0.0	0.2
SDDSC121W1	641.88	642.78	0.9	0.1	0.0	0.1
SDDSC121W1	642.78	643.33	0.55	0.3	0.3	0.8
SDDSC121W1	643.74	644	0.26	0.6	0.9	2.3
SDDSC121W1	644	644.3	0.3	0.5	1.0	2.4
SDDSC121W1	644.3	644.6	0.3	0.3	0.2	0.7
SDDSC121W1	644.6	645.02	0.42	0.2	0.3	0.7
SDDSC121W1	645.02	646.1	1.08	0.1	0.1	0.2
SDDSC121W1	646.1	646.3	0.2	0.5	0.9	2.2
SDDSC121W1	646.3	647.02	0.72	0.1	0.0	0.1
SDDSC121W1	647.02	647.47	0.45	0.3	0.2	0.7
SDDSC121W1	648.95	649.27	0.32	0.2	0.0	0.2
SDDSC121W1	652	652.27	0.27	0.2	0.0	0.2
SDDSC121W1	653.38	654.29	0.91	0.2	0.1	0.4
SDDSC121W1	654.29	654.42	0.13	0.6	0.0	0.6
SDDSC121W1	655.24	655.42	0.18	0.9	0.1	1.0
SDDSC121W1	660.91	661.1	0.19	0.1	0.0	0.1
SDDSC121W1	661.1	661.35	0.25	0.4	0.9	2.0
SDDSC121W1	661.35	661.69	0.34	0.9	0.6	2.0
SDDSC121W1	661.69	662	0.31	78.3	3.3	84.5
SDDSC121W1	662	662.31	0.31	404.0	3.3	410.2
SDDSC121W1	662.31	662.64	0.33	91.3	1.4	93.8
SDDSC121W1	662.64	663.28	0.64	0.3	0.2	0.6
SDDSC121W1	663.28	663.42	0.14	0.2	0.2	0.7
SDDSC121W1	663.42	663.59	0.17	0.5	5.0	9.9
SDDSC121W1	663.59	664.21	0.62	0.1	0.2	0.4
SDDSC121W1	664.21	664.46	0.25	0.2	0.6	1.3
SDDSC121W1	664.46	664.87	0.41	0.2	0.1	0.3
SDDSC121W1	664.87	665.32	0.45	0.1	0.2	0.4
SDDSC121W1	665.32	665.75	0.43	0.1	0.0	0.1
SDDSC121W1	665.75	666	0.25	0.1	0.0	0.1
SDDSC121W1	666	666.38	0.38	0.1	0.0	0.1
SDDSC121W1	666.38	666.92	0.54	0.2	0.1	0.4
SDDSC121W1	666.92	667.35	0.43	1.9	2.7	6.9
SDDSC121W1	667.35	667.73	0.38	0.1	0.1	0.2
SDDSC121W1	670.18	670.54	0.36	0.1	0.2	0.5

SDDSC121W1	699.73	700.65	0.92	0.2	0.0	0.2
SDDSC121W1	700.65	701.15	0.5	0.2	0.0	0.3
SDDSC121W1	708.26	708.53	0.27	0.9	0.0	1.0
SDDSC121W1	708.53	708.72	0.19	0.1	0.0	0.1
SDDSC121W1	712.46	712.89	0.43	0.5	0.0	0.5
SDDSC121W1	713.2	714.5	1.3	0.3	0.0	0.3
SDDSC121W1	714.5	714.88	0.38	0.1	0.0	0.1
SDDSC121W1	715.18	715.93	0.75	0.2	0.0	0.2
SDDSC121W1	725.65	725.82	0.17	4.4	0.0	4.5
SDDSC121W1	731.21	731.7	0.49	0.1	0.0	0.1
SDDSC121W1	732.9	733.34	0.44	0.1	0.1	0.3
SDDSC121W1	733.34	733.54	0.2	0.2	0.0	0.2
SDDSC121W1	738.65	739.27	0.62	0.2	0.0	0.2
SDDSC121W1	748.02	748.27	0.25	0.5	0.0	0.6
SDDSC121W1	748.27	748.5	0.23	0.7	0.3	1.2
SDDSC121W1	748.5	748.65	0.15	0.3	0.0	0.3
SDDSC121W1	748.65	749.09	0.44	0.5	0.8	1.9
SDDSC121W1	749.09	749.4	0.31	0.1	0.1	0.2
SDDSC121W1	749.4	749.6	0.2	3.4	0.2	3.8
SDDSC121W1	749.6	749.95	0.35	3.5	0.7	4.8
SDDSC121W1	749.95	750.55	0.6	0.1	0.1	0.3
SDDSC121W1	752.7	753	0.3	0.6	0.1	0.7
SDDSC121W1	753	754.02	1.02	0.2	0.0	0.2
SDDSC121W1	756.27	756.76	0.49	0.2	0.0	0.2
SDDSC121W1	758	758.15	0.15	0.0	0.0	0.1
SDDSC121W1	766.44	766.62	0.18	0.1	0.0	0.1
SDDSC121W1	766.62	767.22	0.6	0.1	0.0	0.1
SDDSC121W1	776.3	776.6	0.3	0.2	0.0	0.2
SDDSC121W1	780.22	780.6	0.38	0.2	0.0	0.2
SDDSC121W1	780.6	780.92	0.32	0.1	0.0	0.1
SDDSC121W1	783.11	783.89	0.78	0.5	0.0	0.5
SDDSC121W1	790.47	791.25	0.78	0.2	0.0	0.2
SDDSC121W1	797.5	798	0.5	0.1	0.0	0.1
SDDSC121W1	798.91	799.48	0.57	0.2	0.1	0.4
SDDSC121W1	799.48	799.58	0.1	0.2	0.0	0.2
SDDSC121W1	799.89	800.43	0.54	0.5	0.4	1.1
SDDSC121W1	800.43	801.07	0.64	0.6	0.4	1.3
SDDSC121W1	801.37	801.92	0.55	0.2	0.1	0.4
SDDSC121W1	801.92	802.15	0.23	0.3	1.2	2.7
SDDSC121W1	802.94	803.4	0.46	0.1	0.0	0.2
SDDSC121W1	812.4	812.92	0.52	1.1	0.0	1.1
SDDSC121W1	813.98	814.22	0.24	0.4	0.0	0.5
SDDSC121W1	814.22	814.63	0.41	0.1	0.0	0.1

SDDSC121W1	814.63	815.05	0.42	0.1	0.0	0.1
SDDSC121W1	815.05	815.42	0.37	0.4	0.0	0.4
SDDSC121W1	815.42	815.92	0.5	0.5	0.0	0.5
SDDSC121W1	815.92	816.05	0.13	1.0	0.0	1.0
SDDSC121W1	816.05	816.52	0.47	0.5	0.0	0.5
SDDSC121W1	816.52	817.19	0.67	0.1	0.0	0.1
SDDSC121W1	818.91	819.39	0.48	0.2	0.0	0.3
SDDSC121W1	819.39	819.65	0.26	0.4	0.0	0.4
SDDSC121W1	819.65	819.99	0.34	0.5	0.0	0.5
SDDSC121W1	819.99	820.49	0.5	0.9	0.0	0.9
SDDSC121W1	820.49	820.65	0.16	0.4	0.0	0.4
SDDSC121W1	820.65	821.31	0.66	0.6	0.0	0.6
SDDSC121W1	821.31	821.41	0.1	1.1	0.0	1.2
SDDSC121W1	821.41	822.2	0.79	1.3	0.0	1.3
SDDSC121W1	822.2	822.89	0.69	0.4	0.0	0.4
SDDSC121W1	822.89	823.16	0.27	0.7	0.2	1.1
SDDSC121W1	823.16	823.65	0.49	0.4	0.1	0.5
SDDSC121W1	823.65	824.43	0.78	0.1	0.0	0.2
SDDSC121W1	824.43	824.88	0.45	0.2	0.0	0.2
SDDSC121W1	825.73	826.09	0.36	0.2	0.0	0.2
SDDSC121W1	826.09	827.16	1.07	1.3	0.0	1.3
SDDSC121W1	827.16	828.03	0.87	0.2	0.0	0.2
SDDSC121W1	828.03	828.49	0.46	1.7	0.3	2.3
SDDSC121W1	828.49	828.85	0.36	1.2	0.3	1.8
SDDSC121W1	828.85	829.3	0.45	0.5	0.0	0.5
SDDSC121W1	839	840	1	0.2	0.0	0.2
SDDSC121W1	846	846.75	0.75	0.2	0.0	0.2
SDDSC121W1	846.87	847.51	0.64	0.1	0.0	0.1
SDDSC121W1	849.12	850.3	1.18	0.2	0.0	0.2
SDDSC121W1	850.3	850.48	0.18	1.5	0.0	1.5
SDDSC121W1	850.48	850.95	0.47	0.6	0.2	1.0
SDDSC121W1	850.95	851.44	0.49	0.4	0.3	0.9
SDDSC121W1	851.44	851.78	0.34	0.6	0.0	0.6
SDDSC121W1	851.78	852.09	0.31	1.9	0.3	2.4
SDDSC121W1	852.09	852.34	0.25	0.9	0.5	1.8
SDDSC121W1	852.34	852.68	0.34	0.7	0.3	1.3
SDDSC121W1	852.68	853	0.32	0.2	0.0	0.2
SDDSC121W1	853	853.33	0.33	0.2	0.0	0.2
SDDSC121W1	871	871.51	0.51	0.1	0.0	0.1
SDDSC121W1	871.51	872.44	0.93	0.2	0.0	0.2
SDDSC121W1	872.44	872.78	0.34	1.1	0.0	1.1
SDDSC121W1	872.78	873.18	0.4	0.2	0.0	0.2
SDDSC121W1	887	887.93	0.93	0.2	0.0	0.2

SDDSC121W1	887.93	888.26	0.33	1.1	0.4	1.8
SDDSC121W1	888.26	888.58	0.32	0.1	0.0	0.2
SDDSC121W1	888.58	888.75	0.17	0.5	0.0	0.5
SDDSC121W1	888.75	889.6	0.85	0.2	0.0	0.2
SDDSC121W1	889.6	889.76	0.16	1.0	0.0	1.0
SDDSC121W1	889.76	890.37	0.61	0.2	0.0	0.2
SDDSC121W1	891.65	892.65	1	0.4	0.0	0.4
SDDSC121W1	892.65	892.88	0.23	2.0	0.0	2.0
SDDSC121W1	892.88	893.09	0.21	3.4	0.0	3.4
SDDSC121W1	893.09	893.25	0.16	38.7	0.1	38.8
SDDSC121W1	893.25	893.69	0.44	0.4	0.0	0.5
SDDSC121W1	893.69	893.98	0.29	1.4	0.0	1.4
SDDSC121W1	895	895.52	0.52	0.5	0.0	0.5
SDDSC121W1	905	906	1	0.5	0.0	0.5
SDDSC121W1	906	906.42	0.42	0.1	0.0	0.2
SDDSC121W1	906.42	907.19	0.77	0.8	0.0	0.8
SDDSC121W1	907.19	907.9	0.71	0.8	0.0	0.9
SDDSC121W1	910.61	910.82	0.21	0.4	0.0	0.4
SDDSC121W1	913	913.38	0.38	0.3	0.0	0.3
SDDSC121W1	913.38	914	0.62	3.9	0.0	3.9
SDDSC121W1	914	914.15	0.15	1.1	0.0	1.1

## JORC Table 1

### Section 1 Sampling Techniques and Data

Criteria	JORC Code explanation	Commentary
<b>Sampling techniques</b>	<ul style="list-style-type: none"> <li>Nature and quality of sampling (eg cut channels, random chips, or specific specialised industry standard measurement tools appropriate to the minerals under investigation, such as down hole gamma sondes, or handheld XRF instruments, etc). These examples should not be taken as limiting the broad meaning of sampling.</li> <li>Include reference to measures taken to ensure sample representivity and the appropriate calibration of any measurement tools or systems used.</li> <li>Aspects of the determination of mineralisation that are Material to the Public Report.</li> <li>In cases where 'industry standard' work has been done this would be relatively simple (eg 'reverse circulation drilling was used to obtain 1 m samples from which 3 kg was pulverised to produce a 30 g charge for fire assay'). In other cases more explanation may be required, such as where there is coarse gold that has inherent sampling problems. Unusual commodities or mineralisation types (eg submarine nodules) may warrant disclosure of detailed information.</li> </ul>	<ul style="list-style-type: none"> <li>Sampling has been conducted on drill core (half core for &gt;90% and quarter core for check samples), grab samples (field samples of in-situ bedrock and boulders; including duplicate samples), trench samples (rock chips, including duplicates) and soil samples (including duplicate samples). Locations of field samples were obtained by using a GPS, generally to an accuracy of within 5 metres. Drill hole and trench locations have been confirmed to &lt;1 metre using a differential GPS. Samples locations have also been verified by plotting locations on the high-resolution Lidar maps</li> <li>Drill core is marked for cutting and cut using an automated diamond saw used by Company staff in Kilmore. Samples are bagged at the core saw and transported to the Bendigo OnSite Laboratory for assay. At OnSite samples are crushed using a jaw crusher combined with a rotary splitter and a 1 kg split is separated for pulverizing (LM5) and assay.</li> <li>Standard fire assay techniques are used for gold assay on a 30 g charge by experienced staff (used to dealing with high sulphide and stibnite-rich charges). OnSite gold method by fire assay code PE01S.</li> <li>Screen fire assay is used to understand gold grain-size distribution where coarse gold is evident.</li> <li>ICP-OES is used to analyse the aqua regia digested pulp for an additional 12 elements (method BM011) and over-range antimony is measured using flame AAS (method known as B050).</li> <li>Soil samples were sieved in the field and an 80 mesh sample bagged and transported to ALS Global laboratories in Brisbane for super-low level gold analysis on a 50 g samples by method ST44 (using aqua regia and ICP-MS).</li> <li>Grab and rock chip samples are generally submitted to OnSite Laboratories for standard fire assay and 12 element ICP-OES as described above.</li> </ul>
<b>Drilling techniques</b>	<ul style="list-style-type: none"> <li>Drill type (eg core, reverse circulation, open-hole hammer, rotary air blast, auger, Bangka, sonic, etc) and details (eg core diameter, triple or standard tube, depth of diamond tails, face-sampling bit or other type, whether core is oriented and if so, by what method, etc).</li> </ul>	<ul style="list-style-type: none"> <li>HQ diameter diamond drill core, oriented using Boart Longyear TruCore orientation tool with the orientation line marked on the base of the drill core by the driller/offsider. A standard 3 metre core barrel has been found to be most effective in both the hard and soft rocks in the project.</li> </ul>
<b>Drill sample recovery</b>	<ul style="list-style-type: none"> <li>Method of recording and assessing core and chip sample recoveries and results assessed.</li> </ul>	<ul style="list-style-type: none"> <li>Core recoveries were maximised using HQ diamond drill core with careful control over water pressure to maintain soft-rock integrity and prevent loss of</li> </ul>

Criteria	JORC Code explanation	Commentary
	<ul style="list-style-type: none"> <li>Measures taken to maximise sample recovery and ensure representative nature of the samples.</li> <li>Whether a relationship exists between sample recovery and grade and whether sample bias may have occurred due to preferential loss/gain of fine/coarse material.</li> </ul>	<p>finer from soft drill core. Recoveries are determined on a metre-by-metre basis in the core shed using a tape measure against marked up drill core checking against driller's core blocks.</p> <ul style="list-style-type: none"> <li>Plots of grade versus recovery and RQD (described below) show no trends relating to loss of drill core, or fines.</li> </ul>
<b>Logging</b>	<ul style="list-style-type: none"> <li>Whether core and chip samples have been geologically and geotechnically logged to a level of detail to support appropriate Mineral Resource estimation, mining studies and metallurgical studies.</li> <li>Whether logging is qualitative or quantitative in nature. Core (or costean, channel, etc) photography.</li> <li>The total length and percentage of the relevant intersections logged.</li> </ul>	<ul style="list-style-type: none"> <li>Geotechnical logging of the drill core takes place on racks in the the company core shed. Core orientations marked at the drill rig are checked for consistency, and base of core orientation lines are marked on core where two or more orientations match within 10 degrees. Core recoveries are measured for each metre RQD measurements (cumulative quantity of core sticks &gt; 10 cm in a metre) are made on a metre by metre basis.</li> <li>Each tray of drill core is photographed (wet and dry) after it is fully marked up for sampling and cutting.</li> <li>The ½ core cutting line is placed approximately 10 degrees above the orientation line so the orientation line is retained in the core tray for future work.</li> <li>Geological logging of drill core includes the following parametres: Rock types, lithology Alteration Structural information (orientations of veins, bedding, fractures using standard alpha-beta measurements from orientation line; or, in the case of un-oriented parts of the core, the alpha angles are measured) Veining (quartz, carbonate, stibnite) Key minerals (visible under hand lens, e.g. gold, stibnite)</li> <li>100% of drill core is logged for all components described above into the company MX logging database.</li> <li>Logging is fully quantitative, although the description of lithology and alteration relies on visible observations by trained geologists.</li> <li>Each tray of drill core is photographed (wet and dry) after it is fully marked up for sampling and cutting.</li> <li>Logging is considered to be at an appropriate quantitative standard to use in future studies.</li> </ul>
<b>Sub-sampling techniques and sample preparation</b>	<ul style="list-style-type: none"> <li>If core, whether cut or sawn and whether quarter, half or all core taken.</li> <li>If non-core, whether riffled, tube sampled, rotary split, etc and whether sampled wet or dry.</li> <li>For all sample types, the nature, quality and appropriateness of the sample preparation technique.</li> <li>Quality control procedures adopted for all sub-sampling stages to maximise representivity of samples.</li> </ul>	<ul style="list-style-type: none"> <li>Drill core is typically half-core sampled using an Almonte core saw. The drill core orientation line is retained.</li> <li>Quarter core is used when taking sampling duplicates (termed FDUP in the database).</li> <li>Sampling representivity is maximised by always taking the same side of the drill core (whenever oriented), and consistently drawing a cut line on the core where orientation is not possible. The field technician draws these lines.</li> </ul>



Criteria	JORC Code explanation	Commentary
	<ul style="list-style-type: none"> <li>Measures taken to ensure that the sampling is representative of the in situ material collected, including for instance results for field duplicate/second-half sampling.</li> <li>Whether sample sizes are appropriate to the grain size of the material being sampled.</li> </ul>	<ul style="list-style-type: none"> <li>Sample sizes are maximised for coarse gold by using half core, and using quarter core and half core splits (laboratory duplicates) allows an estimation of nugget effect.</li> <li>In mineralised rock the company uses approximately 10% of ¼ core duplicates, certified reference materials (suitable OREAS materials), laboratory sample duplicates and instrument repeats.</li> <li>In the soil sampling program duplicates were obtained every 20<sup>th</sup> sample and the laboratory inserted low-level gold standards regularly into the sample flow.</li> </ul>
<b>Quality of assay data and laboratory tests</b>	<ul style="list-style-type: none"> <li>The nature, quality and appropriateness of the assaying and laboratory procedures used and whether the technique is considered partial or total.</li> <li>For geophysical tools, spectrometres, handheld XRF instruments, etc, the parameters used in determining the analysis including instrument make and model, reading times, calibrations factors applied and their derivation, etc.</li> <li>Nature of quality control procedures adopted (eg standards, blanks, duplicates, external laboratory checks) and whether acceptable levels of accuracy (ie lack of bias) and precision have been established.</li> </ul>	<ul style="list-style-type: none"> <li>The fire assay technique for gold used by OnSite is a globally recognised method, and over-range follow-ups including gravimetric finish and screen fire assay are standard. Of significance at the OnSite laboratory is the presence of fire assay personnel who are experienced in dealing with high sulphide charges (especially those with high stibnite contents) – this substantially reduces the risk of in accurate reporting in complex sulphide-gold charges.</li> <li>The ICP-OES technique is a standard analytical technique for assessing elemental concentrations. The digest used (aqua regia) is excellent for the dissolution of sulphides (in this case generally stibnite, pyrite and trace arsenopyrite), but other silicate-hosted elements, in particular vanadium (V), may only be partially dissolved. These silicate-hosted elements are not important in the determination of the quantity of gold, antimony, arsenic or sulphur.</li> <li>A portable XRF has been used in a qualitative manner on drill core to ensure appropriate core samples have been taken (no pXRF data are reported or included in the MX database).</li> <li>Acceptable levels of accuracy and precision have been established using the following methods <ul style="list-style-type: none"> <li><i>¼ duplicates</i> – half core is split into quarters and given separate sample numbers (commonly in mineralised core) – low to medium gold grades indicate strong correlation, dropping as the gold grade increases over 40 g/t Au.</li> <li><i>Blanks</i> – blanks are inserted after visible gold and in strongly mineralised rocks to confirm that the crushing and pulping are not affected by gold smearing onto the crusher and LM5 swing mill surfaces. Results are excellent, generally below detection limit and a single sample at 0.03 g/t Au.</li> <li><i>Certified Reference Materials</i> – OREAS CRMs have been used throughout the project including blanks, low (&lt;1 g/t Au), medium (up to 5 g/t Au) and high-grade gold samples (&gt; 5 g/t Au). Results are automatically checked on data import into the MX database to fall within 2 standard deviations of the expected value.</li> <li><i>Laboratory splits</i> – OnSite conducts splits of both coarse crush and pulp</li> </ul> </li> </ul>

Criteria	JORC Code explanation	Commentary
		<p>duplicates as quality control and reports all data. In particular, high Au samples have the most repeats.</p> <p><i>Laboratory CRMs</i> – OnSite regularly inserts their own CRM materials into the process flow and reports all data</p> <p><i>Laboratory precision</i> – duplicate measurements of solutions (both Au from fire assay and other elements from the aqua regia digests) are made regularly by the laboratory and reported.</p> <ul style="list-style-type: none"> <li>• <i>Accuracy and precision</i> have been determined carefully by using the sampling and measurement techniques described above during the sampling (accuracy) and laboratory (accuracy and precision) stages of the analysis.</li> <li>• <i>Soil sample</i> company duplicates and laboratory certified reference materials all fall within expected ranges.</li> </ul>
<p><b>Verification of sampling and assaying</b></p>	<ul style="list-style-type: none"> <li>• <i>The verification of significant intersections by either independent or alternative company personnel.</i></li> <li>• <i>The use of twinned holes.</i></li> <li>• <i>Documentation of primary data, data entry procedures, data verification, data storage (physical and electronic) protocols.</i></li> <li>• <i>Discuss any adjustment to assay data.</i></li> </ul>	<ul style="list-style-type: none"> <li>• The Independent Geologist has visited Sunday Creek drill sites and inspected drill core held at the Kilmore core shed.</li> <li>• Visual inspection of drill intersections matches the both the geological descriptions in the database and the expected assay data (for example, gold and stibnite visible in drill core is matched by high Au and Sb results in assays).</li> <li>• In addition, on receipt of results Company geologists assess the gold, antimony and arsenic results to verify that the intersections returned expected data.</li> <li>• The electronic data storage in the MX database is of a high standard. Primary logging data are entered directly by the geologists and field technicians and the assay data are electronically matched against sample number on return from the laboratory.</li> <li>• Certified reference materials, ¼ core field duplicates (FDUP), laboratory splits and duplicates and instrument repeats are all recorded in the database.</li> <li>• Exports of data include all primary data, from hole SDDSC077B onwards after discussion with SRK Consulting. Prior to this gold was averaged across primary, field and lab duplicates.</li> <li>• Adjustments to assay data are recorded by MX, and none are present (or required).</li> <li>• Twinned drill holes are not available at this stage of the project.</li> </ul>
<p><b>Location of data points</b></p>	<ul style="list-style-type: none"> <li>• <i>Accuracy and quality of surveys used to locate drill holes (collar and down-hole surveys), trenches, mine workings and other locations used in Mineral Resource estimation.</i></li> <li>• <i>Specification of the grid system used.</i></li> <li>• <i>Quality and adequacy of topographic control.</i></li> </ul>	<ul style="list-style-type: none"> <li>• Differential GPS used to locate drill collars, trenches and some workings</li> <li>• Standard GPS for some field locations (grab and soils samples), verified against Lidar data.</li> <li>• The grid system used throughout is Geocentric datum of Australia 1994; Map Grid Zone 55 (GDA94_Z55), also referred to as ELSG 28355.</li> <li>• Topographic control is excellent owing to sub 10 cm accuracy from Lidar data.</li> </ul>

<b>Criteria</b>	<b>JORC Code explanation</b>	<b>Commentary</b>
<b>Data spacing and distribution</b>	<ul style="list-style-type: none"> <li>• <i>Data spacing for reporting of Exploration Results.</i></li> <li>• <i>Whether the data spacing and distribution is sufficient to establish the degree of geological and grade continuity appropriate for the Mineral Resource and Ore Reserve estimation procedure(s) and classifications applied.</i></li> <li>• <i>Whether sample compositing has been applied.</i></li> </ul>	<ul style="list-style-type: none"> <li>• The data spacing is suitable for reporting of exploration results – evidence for this is based on the improving predictability of high-grade gold-antimony intersections.</li> <li>• At this time the data spacing and distribution are not sufficient for the reporting of Mineral Resource Estimates. This however may change as knowledge of grade controls increase with future drill programs.</li> <li>• Sample compositing has not been applied to the reporting of any drill results.</li> </ul>
<b>Orientation of data in relation to geological structure</b>	<ul style="list-style-type: none"> <li>• <i>Whether the orientation of sampling achieves unbiased sampling of possible structures and the extent to which this is known, considering the deposit type.</i></li> <li>• <i>If the relationship between the drilling orientation and the orientation of key mineralised structures is considered to have introduced a sampling bias, this should be assessed and reported if material.</i></li> </ul>	<ul style="list-style-type: none"> <li>• The true thickness of the mineralised intervals reported are interpreted to be approximately 60-70% of the sampled thickness.</li> <li>• Drilling is oriented in an optimum direction when considering the combination of host rock orientation and apparent vein control on gold and antimony grade. The steep nature of some of the veins may give increases in apparent thickness of some intersections, but more drilling is required to quantify.</li> <li>• A sampling bias is not evident from the data collected to date (drill holes cut across mineralised structures at a moderate angle).</li> </ul>
<b>Sample security</b>	<ul style="list-style-type: none"> <li>• <i>The measures taken to ensure sample security.</i></li> </ul>	<ul style="list-style-type: none"> <li>• Drill core is delivered to the Kilmore core logging shed by either the drill contractor or company field staff. Samples are marked up and cut by company staff at the Kilmore core shed, in an automated diamond saw and bagged before loaded onto strapped secured pallets and trucked by commercial transport to Bendigo for submission to the laboratory. There is no evidence in any stage of the process, or in the data for any sample security issues.</li> </ul>
<b>Audits or reviews</b>	<ul style="list-style-type: none"> <li>• <i>The results of any audits or reviews of sampling techniques and data.</i></li> </ul>	<ul style="list-style-type: none"> <li>• Continuous monitoring of CRM results, blanks and duplicates is undertaken by geologists and the company data geologist. Mr Michael Hudson for SXG has the orientation, logging and assay data.</li> </ul>

## Section 2 Reporting of Exploration Results

Criteria	JORC Code explanation	Commentary
<b>Mineral tenement and land tenure status</b>	<ul style="list-style-type: none"> <li>Type, reference name/number, location and ownership including agreements or material issues with third parties such as joint ventures, partnerships, overriding royalties, native title interests, historical sites, wilderness or national park and environmental settings.</li> <li>The security of the tenure held at the time of reporting along with any known impediments to obtaining a licence to operate in the area.</li> </ul>	<ul style="list-style-type: none"> <li>The Sunday Creek Goldfield, containing the Clonbinane Project, is covered by the Retention Licence RL 6040 and is surrounded by Exploration Licence EL6163 and Exploration Licence EL7232. All the licences are 100% held by Clonbinane Goldfield Pty Ltd, a wholly owned subsidiary company of Southern Cross Gold Ltd.</li> </ul>
<b>Exploration done by other parties</b>	<ul style="list-style-type: none"> <li>Acknowledgment and appraisal of exploration by other parties.</li> </ul>	<ul style="list-style-type: none"> <li>The main historical prospect within the Sunday Creek project is the Clonbinane prospect, a high level orogenic (or epizonal) Fosterville-style deposit. Small scale mining has been undertaken in the project area since the 1880s continuing through to the early 1900s. Historical production occurred with multiple small shafts and alluvial workings across the Clonbinane Goldfield permits. Production of note occurred at the Clonbinane area with total production being reported as 41,000 oz gold at a grade of 33 g/t gold (Leggo and Holdsworth, 2013)</li> <li>Work in and nearby to the Sunday Creek Project area by previous explorers typically focused on finding bulk, shallow deposits. Beadell Resources were the first to drill deeper targets and Southern Cross have continued their work in the Sunday Creek Project area.</li> <li>EL54 - Eastern Prospectors Pty Ltd Rock chip sampling around Christina, Apollo and Golden Dyke mines. Rock chip sampling down the Christina mine shaft. Resistivity survey over the Golden Dyke. Five diamond drill holes around Christina, two of which have assays.</li> <li>ELs 872 &amp; 975 - CRA Exploration Pty Ltd Exploration focused on finding low grade, high tonnage deposits. The tenements were relinquished after the area was found to be prospective but not economic. Stream sediment samples around the Golden Dyke and Reedy Creek areas. Results were better around the Golden Dyke. 45 dump samples around Golden Dyke old workings showed good correlation between gold, arsenic and antimony. Soil samples over the Golden Dyke to define boundaries of dyke and mineralization. Two costeans parallel to the Golden Dyke targeting soil anomalies. Costeans since rehabilitated by SXG.</li> <li>ELs 827 &amp; 1520 - BHP Minerals Ltd Exploration targeting open cut gold mineralization peripheral to SXG tenements.</li> <li>ELs 1534, 1603 &amp; 3129 - Ausminde Holdings Pty Ltd</li> </ul>

Criteria	JORC Code explanation	Commentary
		<p>Targeting shallow, low grade gold. Trenching around the Golden Dyke prospect and results interpreted along with CRAs costeans. 29 RC/Aircore holes totalling 959 m sunk into the Apollo, Rising Sun and Golden Dyke target areas.</p> <p>ELs 4460 &amp; 4987 - Beadell Resources Ltd</p> <ul style="list-style-type: none"> <li>• ELs 4460 &amp; 4987 - Beadell Resources Ltd ELs 4460 and 4497 were granted to Beadell Resources in November 2007. Beadell successfully drilled 30 RC holes, including second diamond tail holes in the Golden Dyke/Apollo target areas.</li> <li>• Both tenements were 100% acquired by Auminco Goldfields Pty Ltd in late 2012 and combined into one tenement EL4987.</li> <li>• Nagambie Resources Ltd purchased Auminco Goldfields in July 2014. EL4987 expired late 2015, during which time Nagambie Resources applied for a retention licence (RL6040) covering three square kilometres over the Sunday Creek Goldfield. RL6040 was granted July 2017.</li> <li>• Clonbinane Gold Field Pty Ltd was purchased by Mawson Gold Ltd in February 2020. Mawson drilled 30 holes for 6,928 m and made the first discoveries to depth.</li> </ul>
<b>Geology</b>	<ul style="list-style-type: none"> <li>• <i>Deposit type, geological setting and style of mineralisation.</i></li> </ul>	<ul style="list-style-type: none"> <li>• Refer to the description in the main body of the release.</li> </ul>
<b>Drill hole Information</b>	<ul style="list-style-type: none"> <li>• <i>A summary of all information material to the understanding of the exploration results including a tabulation of the following information for all Material drill holes:</i> <ul style="list-style-type: none"> <li>○ <i>easting and northing of the drill hole collar</i></li> <li>○ <i>elevation or RL (Reduced Level – elevation above sea level in metres) of the drill hole collar</i></li> <li>○ <i>dip and azimuth of the hole</i></li> <li>○ <i>down hole length and interception depth</i></li> <li>○ <i>hole length.</i></li> </ul> </li> <li>• <i>If the exclusion of this information is justified on the basis that the information is not Material and this exclusion does not detract from the understanding of the report, the Competent Person should clearly explain why this is the case.</i></li> </ul>	<ul style="list-style-type: none"> <li>• Refer to appendices</li> </ul>
<b>Data aggregation methods</b>	<ul style="list-style-type: none"> <li>• <i>In reporting Exploration Results, weighting averaging techniques, maximum and/or minimum grade truncations (eg. cutting of high-grades) and cut-off grades are usually Material and should be stated.</i></li> <li>• <i>Where aggregate intercepts incorporate short lengths of high-grade results and longer lengths of low-grade results, the procedure used for</i></li> </ul>	<ul style="list-style-type: none"> <li>• See “Further Information” and “Metal Equivalent Calculation” in main text of press release.</li> </ul>

Criteria	JORC Code explanation	Commentary																		
	<p>such aggregation should be stated and some typical examples of such aggregations should be shown in detail.</p> <ul style="list-style-type: none"> <li>The assumptions used for any reporting of metal equivalent values should be clearly stated.</li> </ul>																			
<b>Relationship between mineralisation widths and intercept lengths</b>	<ul style="list-style-type: none"> <li>These relationships are particularly important in the reporting of Exploration Results.</li> <li>If the geometry of the mineralisation with respect to the drill hole angle is known, its nature should be reported.</li> <li>If it is not known and only the down hole lengths are reported, there should be a clear statement to this effect (eg. 'down hole length, true width not known').</li> </ul>	<ul style="list-style-type: none"> <li>See reporting of true widths in the body of the press release.</li> </ul>																		
<b>Diagrams</b>	<ul style="list-style-type: none"> <li>Appropriate maps and sections (with scales) and tabulations of intercepts should be included for any significant discovery being reported. These should include, but not be limited to a plan view of drill hole collar locations and appropriate sectional views.</li> </ul>	<ul style="list-style-type: none"> <li>The results of the diamond drilling are displayed in the figures in the announcement.</li> </ul>																		
<b>Balanced reporting</b>	<ul style="list-style-type: none"> <li>Where comprehensive reporting of all Exploration Results is not practicable, representative reporting of both low and high-grades and/or widths should be practiced to avoid misleading reporting of Exploration Results.</li> </ul>	<ul style="list-style-type: none"> <li>All results above 0.1g/t Au have been tabulated in this announcement. The results are considered representative with no intended bias.</li> <li>Core loss, where material, is disclosed in tabulated drill intersections.</li> </ul>																		
<b>Other substantive exploration data</b>	<ul style="list-style-type: none"> <li>Other exploration data, if meaningful and material, should be reported including (but not limited to): geological observations; geophysical survey results; geochemical survey results; bulk samples – size and method of treatment; metallurgical test results; bulk density, groundwater, geotechnical and rock characteristics; potential deleterious or contaminating substances.</li> </ul>	<ul style="list-style-type: none"> <li>Previously reported diamond drill results are displayed in plans, cross sections and long sections and discussed in the text and in the Competent Person's statement.</li> <li>Preliminary testing (AMML Report 1801-1) has demonstrated the viability of recovering gold and antimony values to high value products by industry standard processing methods.</li> <li>The program was completed by AMML, an established mineral and metallurgical testing laboratory specialising in flotation, hydrometallurgy, gravity and comminution testwork at their testing facilities in Gosford, NSW. The program was supervised by Craig Brown of Resources Engineering &amp; Management, who was engaged to develop plans for initial sighter flotation testing of samples from drilling of the Sunday Creek deposit.</li> <li>Two quarter core intercepts were selected for metallurgical test work (Table 1). A split of each was subjected to assay analysis. The table below shows samples selected for metallurgical test work:</li> </ul> <table border="1"> <thead> <tr> <th>Sample Location</th> <th>Sample Name</th> <th>Weight (kg)</th> <th>Drill hole</th> <th>from (m)</th> <th>to (m)</th> </tr> </thead> <tbody> <tr> <td>Rising Sun</td> <td>RS01</td> <td>22.8</td> <td>MDDSC025</td> <td>275.9</td> <td>289.3</td> </tr> <tr> <td>Apollo</td> <td>AP01</td> <td>16.6</td> <td>SDDSC031</td> <td>220.4</td> <td>229.9</td> </tr> </tbody> </table>	Sample Location	Sample Name	Weight (kg)	Drill hole	from (m)	to (m)	Rising Sun	RS01	22.8	MDDSC025	275.9	289.3	Apollo	AP01	16.6	SDDSC031	220.4	229.9
Sample Location	Sample Name	Weight (kg)	Drill hole	from (m)	to (m)															
Rising Sun	RS01	22.8	MDDSC025	275.9	289.3															
Apollo	AP01	16.6	SDDSC031	220.4	229.9															



Criteria	JORC Code explanation	Commentary
		<p>The metallurgical characterisation test work included:</p> <ul style="list-style-type: none"> <li>• Diagnostic LeachWELL testing.</li> <li>• Gravity recovery by Knelson concentrator and hand panning.</li> <li>• Timed flotation of combined gravity tails.</li> <li>• Rougher-Cleaner flotation (without gravity separation), with sizing of products, to produce samples for mineralogical investigation.</li> <li>• Mineral elemental concentrations and gold department was investigated using Laser Ablation examination by University of Tasmania.</li> <li>• QXRD Mineralogical assessment were used to estimate mineral contents for the test products, and, from this, to assess performance in terms of minerals as well as elements, including contributions to gold department. For both test samples, observations and calculations indicated a high proportion of native ('free') gold: 84.0% in RS01 and 82.1% in AP01.</li> <li>• Samples of size fractions of the three sulphide and gold containing flotation products from the Rougher-Cleaner test series were sent to MODA Microscopy for optical mineralogical assessment. Key observations were: <ul style="list-style-type: none"> <li>○ The highest gold grade samples from each test series found multiple grains of visible gold which were generally liberated, with minor association with stibnite (antimony sulphide).</li> <li>○ Stibnite was highly liberated and was very 'clean' – 71.7% Sb, 28.3% S.</li> <li>○ Arsenopyrite was also highly liberated indicating potential for separation.</li> <li>○ Pyrite was largely free but exhibited some association with gangue minerals.</li> </ul> </li> </ul>
<p><b>Further work</b></p>	<ul style="list-style-type: none"> <li>• <i>The nature and scale of planned further work (eg. tests for lateral extensions or depth extensions or large-scale step-out drilling).</i></li> <li>• <i>Diagrams clearly highlighting the areas of possible extensions, including the main geological interpretations and future drilling areas, provided this information is not commercially sensitive.</i></li> </ul>	<ul style="list-style-type: none"> <li>• The Company drilled 30,000 m in 2023 and plans to continue drilling with 5 diamond drill rigs. The Company has stated it will drill 60,000 m from 2023 to Q4 2025. The company remains in an exploration stage to expand the mineralisation along strike and to depth.</li> <li>• See diagrams in presentation which highlight current and future drill plans.</li> </ul>