
Invitation to Nova Investor Webinars

Nova Minerals Limited (Nova or Company) (ASX: NVA, NASDAQ: NVA, FRA: QM3) is pleased to provide more opportunities for its shareholders, investors, and the broader market to attend a live virtual presentation by Nova's CEO, Christopher Gerteisen.

The Company will present an outline of its Estelle Gold and Critical Minerals Project, detailing the three development options it is currently investigating as part of the feasibility studies and potential Department of Defense (DoD) grants, recent assay results, as well as discuss its exploration strategy and path towards production.

At the conclusion of the presentation there will be an opportunity for attendees to ask questions of management.

Although the live webinar presentations will be provided using the Company's Vriify platform, a PDF of the presentation is attached to this announcement.

Emerging Growth Conference Webinar

Event: Emerging Growth Company Conference

Time: 1.10PM US EST Thursday 5 December 2024 2024 (5.10AM Australian EST Friday 6 December 2024)

Registration: Please register [here](#) to ensure you are able to attend the conference and receive any updates that are released.

Questions: Questions may be submitted in advance to Questions@EmergingGrowth.com or asked during the event.

RedChip Investor Webinar

Event: RedChip Investor Webinar

Time: 4.15PM US EST Wednesday 11 December 2024 (8.15AM Australian EST Thursday 12 December 2024)

Registration: Please register [here](#) to ensure you are able to attend the webinar. After registering, you will receive a confirmation email containing information about joining the webinar.

Questions: Questions may be submitted in advance to NVA@redchip.com or asked during the event.

If attendees are not able to join the event live on the day of the webinar, an archived webcast will also be made available on the Company's website.

Main Operations

Whiskey Bravo Airstrip
Matanuska-Susitna Borough, Alaska, USA
1150 S Colony Way Suite 3-440,
Palmer, AK 99645

Corporate

Suite 5, 242 Hawthorn Road,
Caulfield, Victoria, 3161,
Australia
Phone +61 3 9537 1238

ASX: NVA | NASDAQ: NVA | FRA: QM3

www.novaminerals.com.au
Email info@novaminerals.com.au

ACN 006 690 348



Further discussion and analysis of the Estelle Gold and Critical Minerals Project is available through the interactive Vrifly 3D animations, presentations, and videos, all available on the Company's website. www.novaminerals.com.au

This announcement has been authorized for release by the Company's Executive Directors.

Christopher Gerteisen
CEO and Executive Director
E: info@novaminerals.com.au

Craig Bentley
Director of Finance & Compliance
E: craig@novaminerals.com.au
M: +61 414 714 196

About Nova Minerals Limited

Nova Minerals Limited is a Gold, Antimony and Critical Minerals exploration and development company focused on advancing the Estelle Project, comprised of 514 km² of State of Alaska mining claims, which contains multiple mining complexes across a 35 km long mineralized corridor of over 20 advanced Gold and Antimony prospects, including two already defined multi-million ounce resources, and several drill ready Antimony prospects with massive outcropping stibnite vein systems observed at surface. The 85% owned project is located 150 km northwest of Anchorage, Alaska, USA, in the prolific Tintina Gold Belt, a province which hosts a >220 million ounce (Moz) documented gold endowment and some of the world's largest gold mines and discoveries including, Barrick's Donlin Creek Gold Project and Kinross Gold Corporation's Fort Knox Gold Mine. The belt also hosts significant Antimony deposits and was a historical North American Antimony producer.



Competent Person Statements

Mr Vannu Khounphakdee P.Geo., who is an independent consulting geologist of a number of mineral exploration and development companies, reviewed and approves the technical information in this release and is a member of the Australian Institute of Geoscientists (AIG), which is ROPO accepted for the purpose of reporting in accordance with ASX listing rules. Mr Vannu Khounphakdee has sufficient experience relevant to the gold deposits under evaluation to qualify as a Competent Person as defined in the 2012 edition of the 'Australian Code for Reporting of Exploration Results, Mineral Resources and Ore Reserves'. Mr Vannu Khounphakdee is also a Qualified Person as defined by S-K 1300 rules for mineral deposit disclosure. Mr Vannu Khounphakdee consents to the inclusion in the report of the matters based on information in the form and context in which it appears.

The information in the announcement dated today that relates to exploration results and exploration targets is based on information compiled by Mr. Hans Hoffman. Mr. Hoffman, Owner of First Tracks Exploration, LLC, who is providing geologic consulting services to Nova Minerals, compiled the technical information in this release and is a member of the American Institute of Professional Geologists (AIPG), which is ROPO, accepted for the purpose of reporting in accordance with ASX listing rules. Mr. Hoffman has sufficient experience relevant to the style of mineralization and type of deposit under consideration and to the activity which he is undertaking to qualify as a Competent Person as defined in the 2012 edition of the 'Australian Code for Reporting of Exploration Results, Mineral Resources and Ore Reserves'. Mr. Hoffman consents to the inclusion in the report of the matters based on information in the form and context in which it appears.

The Exploration results were reported in accordance with Clause 18 of the Australasian Code for Reporting of Exploration Results, Mineral Resources and Ore Reserves (2012 Edition) (JORC Code).

The Company is also listed on the NASDAQ in the United States and, as a result, is required in respect of its exploration and resource reporting to comply with the US Securities and Exchange Commission (SEC) requirements in respect of resource reporting in the USA. This requires compliance with the SEC's S-K 1300 resource regulations. Investors accessing the Company's NASDAQ press releases should be aware that S-K 1300 statements made in those releases are not JORC Code compliant statements.

Nova Minerals confirms that it is not aware of any new information or data that materially affects the information included in the relevant market announcements, and in the case of the exploration results, that all material assumptions and technical parameters underpinning the results in the relevant market announcement continue to apply and have not materially changed.

Forward-looking Statements and Disclaimers

This news release contains "forward-looking information" within the meaning of applicable securities laws. Generally, any statements that are not historical facts may contain forward-looking information, and forward looking information can be identified by the use of forward-looking terminology such as "plans", "expects" or "does not expect", "is expected", "budget" "scheduled", "estimates",



“forecasts”, “intends”, “anticipates” or “does not anticipate”, or “believes”, or variations of such words and phrases or indicates that certain actions, events or results “may”, “could”, “would”, “might” or “will be” taken, “occur” or “be achieved.” Forward-looking information is based on certain factors and assumptions management believes to be reasonable at the time such statements are made, including but not limited to, continued exploration activities, Gold and other metal prices, the estimation of initial and sustaining capital requirements, the estimation of labor costs, the estimation of mineral reserves and resources, assumptions with respect to currency fluctuations, the timing and amount of future exploration and development expenditures, receipt of required regulatory approvals, the availability of necessary financing for the Project, permitting and such other assumptions and factors as set out herein. apparent inconsistencies in the figures shown in the MRE are due to rounding

Forward-looking information is subject to known and unknown risks, uncertainties and other factors that may cause the actual results, level of activity, performance or achievements of the Company to be materially different from those expressed or implied by such forward-looking information, including but not limited to: risks related to changes in Gold prices; sources and cost of power and water for the Project; the estimation of initial capital requirements; the lack of historical operations; the estimation of labor costs; general global markets and economic conditions; risks associated with exploration of mineral deposits; the estimation of initial targeted mineral resource tonnage and grade for the Project; risks associated with uninsurable risks arising during the course of exploration; risks associated with currency fluctuations; environmental risks; competition faced in securing experienced personnel; access to adequate infrastructure to support exploration activities; risks associated with changes in the mining regulatory regime governing the Company and the Project; completion of the environmental assessment process; risks related to regulatory and permitting delays; risks related to potential conflicts of interest; the reliance on key personnel; financing, capitalization and liquidity risks including the risk that the financing necessary to fund continued exploration and development activities at the Project may not be available on satisfactory terms, or at all; the risk of potential dilution through the issuance of additional common shares of the Company; the risk of litigation.

Although the Company has attempted to identify important factors that cause results not to be as anticipated, estimated or intended, there can be no assurance that such forward-looking information will prove to be accurate, as actual results and future events could differ materially from those anticipated in such information. Accordingly, readers should not place undue reliance on forward-looking information. Forward looking information is made as of the date of this announcement and the Company does not undertake to update or revise any forward-looking information this is included herein, except in accordance with applicable securities laws.

Estelle Project

Developing North America's next major
gold and critical minerals district in Alaska

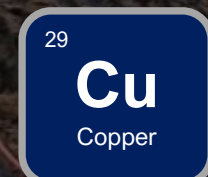
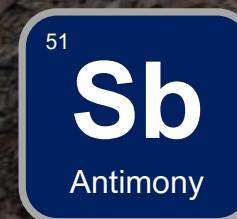


Emerging Growth Conference

5 December 2024

ASX: **NVA** | NASDAQ: **NVA** | FRA: **QM3**

www.novaminerals.com.au



Important Notices and Disclaimers



General

This presentation has been prepared by Nova Minerals Ltd (ACN 006 690 348) (Company) based on information from its own- and third-party sources and is not a disclosure document. No party other than the Company has authorised or caused the issue, lodgement, submission, dispatch or provision of this presentation, or takes any responsibility for, or makes or purports to make any statements, representations or undertakings in this presentation. Except for any liability that cannot be excluded by law, the Company and its related bodies corporate, directors, employees, servants, advisers and agents disclaim and accept no responsibility or liability for any expenses, losses, damages or costs incurred by you relating in any way to this presentation including, without limitation, the information contained in or provided in connection with it, any errors or omissions from it however caused, lack of accuracy, completeness, currency or reliability or you or any other person placing any reliance on this presentation, its accuracy, completeness, currency or reliability. This presentation is not a prospectus, disclosure document or other offering document under Australian law or under any other law. It is provided for information purposes and is not an invitation nor offer of shares or recommendation for subscription, purchase or sale in any jurisdiction. This presentation does not purport to contain all the information that a prospective investor may require in connection with any potential investment in the Company. Each recipient must make its own independent assessment of the Company before acquiring any shares in the Company (Shares).

Not Investment Advice

Each recipient of the presentation should make its own enquiries and investigations regarding all information in this presentation including but not limited to the assumptions, uncertainties and contingencies which may affect future operations of the Company and the impact that different future outcomes might have on the Company. Information in this presentation is not intended to be relied upon as advice to investors or potential investors and has been prepared without taking account of any person's individual investment objectives, financial situation or particular needs. Before making an investment decision, prospective investors should consider the appropriateness of the information having regard to their own investment objectives, financial situation and needs and seek legal, accounting and taxation advice appropriate to their jurisdiction. The Company is not licensed to provide financial product advice in respect of its securities.

Forward Looking Statements

This document contains forward looking statements concerning the Company. Forward-looking statements are not statements of historical fact, and actual events and results may differ materially from those described in the forward-looking statements as a result of a variety of risks, uncertainties and other factors. Forward-looking statements are inherently subject to business, economic, competitive, political and social uncertainties and contingencies. Many factors could cause the Company's actual results to differ materially from those expressed or implied in any forward-looking information provided by the Company, or on behalf of the Company. Such factors include, among other things, risks relating to additional funding requirements, metal prices, exploration, development and operating risks, competition, production risks, regulatory restrictions, including environmental regulation and liability and potential title disputes. Forward looking statements in this document are based on the Company's beliefs, opinions and estimates of the Company as of the dates the forward-looking statements are made, and no obligation is assumed to update forward looking statements if these beliefs, opinions and estimates should change or to reflect other future developments. Although management believes that the assumptions made by the Company and the expectations represented by such information are reasonable, there can be no assurance that the forward-looking information will prove to be accurate.

Forward-looking information involves known and unknown risks, uncertainties, and other factors which may cause the actual results, performance or achievements of the Company to be materially different from any anticipated future results, performance or achievements expressed or implied by such forward-looking information.

Such factors include, among others, the actual market price of commodities, the actual results of future exploration, changes in project parameters as plans continue to be evaluated, as well as those factors disclosed in the Company's publicly filed documents. Readers should not place undue reliance on forward-looking information. The Company does not undertake to update any forward-looking information, except in accordance with applicable securities laws. No representation, warranty or undertaking, express or implied, is given or made by the Company that the occurrence of the events expressed or implied in any forward-looking statements in this presentation will actually occur.

JORC Code

It is a requirement of the ASX Listing Rules that the reporting of ore reserves and mineral resources in Australia comply with the Joint Ore Reserves Committee's Australasian Code for Reporting of Mineral Resources and Ore Reserves (JORC Code). Investors outside Australia should note that while ore reserve and mineral resource estimates of the Company in this document comply with the JORC Code (such JORC Code-compliant ore reserves and mineral resources being "Ore Reserves" and "Mineral Resources" respectively), unless stated otherwise, they may not comply with the relevant guidelines in other countries and, in particular, may not comply with (i) National Instrument 43-101 (Standards of Disclosure for Mineral Projects) of the Canadian Securities Administrators (the "Canadian NI 43-101 Standards"); or (ii) Item 1300 of Regulation S-K, which governs disclosures of mineral reserves in registration statements filed with the SEC. Information contained in this document describing mineral deposits may not be comparable to similar information made public by companies subject to the reporting and disclosure requirements of Canadian or US securities laws.

Compliance Statements

This Presentation contains references to Mineral Resource Estimates extracted from the Company's ASX announcements dated 11 April 2023, titled "Estelle Global Gold MRE Increases to 9.9 Moz Au", and dated 16 April 2024, titled "Mineral Resource Estimate for US Listing" (refer Appendix 1). References in this presentation to exploration results have been extracted from the Company's ASX announcements as noted on the relevant pages of this presentation. Nova confirms that it is not aware of any new information or data that materially affects the information included in the original announcements and, in the case of estimates of Mineral Resources, that all material assumptions and technical parameters underpinning the estimates in the relevant market announcement continue to apply and have not materially changed. The Company confirms that the form and context in which the Competent Persons' findings are presented have not been materially modified from the original market announcements.

Investment Risk

There are a number of risks specific to the Company and of a general nature which may affect the future operating and financial performance of the Company and the value of an investment in the Company, including and not limited to the Company's capital requirements, the potential for shareholders to be diluted, risks associated with the reporting of resources estimates, budget risks, risks associated with the COVID-19 pandemic and operational risk. An investment in Shares is subject to known and unknown risks, some of which are beyond the control of the Company. The Company does not guarantee any particular rate of return or the performance of the Company.

Financial Data

All dollar values are in United States dollars (US\$ or USD) unless otherwise stated. The information contained in this Presentation may not necessarily be in statutory format. Amounts, totals and change percentages are calculated on whole numbers and not the rounded amounts presented.

This announcement has been authorized for release by the executive directors.

Estelle – Gold & Critical Minerals Asset in Alaska

Differentiating Factor Grade and Scale – Development Optionality with Significant Upside (85% Owned)



Jurisdiction

- Alaska, USA
- State of Alaska mining claims, streamlined permitting process



District Scale

- 514km² of State of Alaska claims
- 35km long mineralized corridor



Advanced Project

- Open pit
- Low strip ratio
- Feasibility studies commenced



Infrastructure

- 80-person camp
- 4,000ft airstrip
- Sample lab
- Road & power underway



Korbel

Bulk Tonnage Gold
– Big, Low Strip,
Large Selective
Mining Potential,
Low Unit Cost,
Open Pit



Stibium

High-Grade Antimony-
Gold from surface
samples



Stoney



Train



RPM

High-Grade gold
starter mine from
surface



Multiple Resources

- Large IRGS deposits
- 5.2 Moz Au US\$2,000 oz pit constrained S-K 1300 resource²
- 9.9 Moz Au JORC global resource (ASX compliant)¹

Target Minerals

- Gold, copper & silver
- Antimony & other critical minerals
- Gold ~ US\$2,500 oz
- Antimony ~ US\$25,000 mt

Long Term Project

- Decades of potential production
- > 20 known prospects

90,000m Drilling

- Fully oriented HQ diamond drill core
- Thick, high-grade intercepts
- From surface

¹ Global resource compliant to JORC standards only. Refer to Appendix 1

² Economic pit constrained resource compliant to JORC and S-K 1300 standards. Refer to Appendix 1

The Estelle Gold and Critical Minerals Project

A District Scale Project in a Great Neighbourhood



- 35km long mineralized corridor on 514km² of State of Alaska Mining claims
- 2nd largest gold producing State in USA
- State has designated primary surface use for mineral development
- Alaska has a well-defined permitting pathway
- Alaska – Safe and rich mining jurisdiction
- High-Grade Antimony with potential DoD grants advancing

LEGEND

- Major gold mine or deposit
- Nova priority projects

* Resource endowments sourced from the companies' websites and resource statements



* Global JORC compliant resource Refer to Appendix 1

Alaska - Tier 1 Mining Region

Close to Anchorage with Infrastructure Solutions in Place

Location

- Located on State of Alaska public lands, 150km northwest of Anchorage
- 514km² of unpatented mining claims
- Alaska has a streamlined permitting process
- The Estelle Gold and Critical Minerals Project is fully permitted for exploration

Access

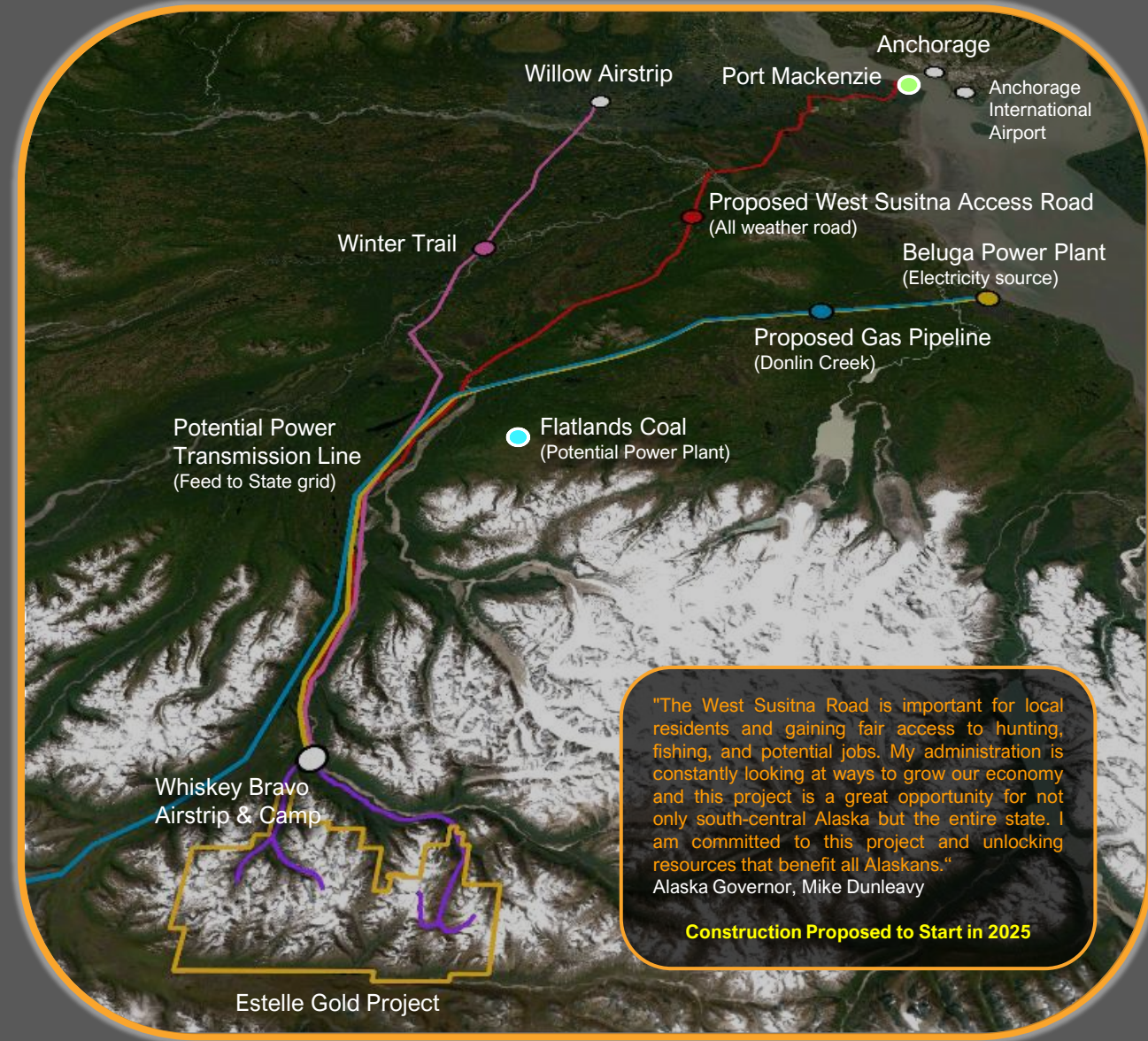
- Short flight from Anchorage or Willow to an all-season air strip
- Winter trail used to transport large and heavy equipment
- Proposed West Susitna Access Road has considerable government and community support
 - All weather road that will link the project to port, rail and road
 - 1st part of the road included in the DoT plan to break ground in 2025
 - AIDEA progressing the remaining portion of the road with studies for permitting to be completed in 2024

Facilities

- 80 person fully winterized camp
- Onsite sample processing facility
- 4,000 foot all season airstrip which can facilitate large capacity DC3 aircraft

Power – Numerous Options Being Investigated for the FS

- Link to the state grid or proposed Flatlands Coal power plant
- Offtake from the proposed Donlin gas pipeline
- Diesel generators
- Micro-nuclear reactor



Estelle Gold Project

Targeting world class deposits with multiple resource centers across the single project. Over 20 potential prospects being progressively explored



Whiskey Bravo
Airstrip & Camp

Potential Antimony-Gold
Processing Plant

Stibium

Potential Gold
Processing Plant

Korbel Main Deposit

Cathedral Deposit

Wombat

Stoney

Muddy Creek

Shoeshine

Train

Trumpet

Train

Potential Gold
Processing Plant

RPM North
Deposit

RPM South
Deposit

RPM Valley

RPM

3D interactive presentation of the project is
available at www.novaminerals.com.au

35km Long Mineralized Corridor

Key:

- Resource Deposit
- Prospect – Resource Target
- Prospect – Other
- Potential Processing Plant
- - - Proposed Access Road
- - - Proposed West Susitna Access Road

1km

Estelle Staged Development Options

Deferred Capital/Funding Early Production (Pending completion of studies)

Whiskey Bravo
camp & airstrip

Potential Antimony-Gold
Processing Plant

3. Stand Alone Antimony-Gold Starter Mine

- Quick start up, subject to DoD grant
- Low CAPEX
- Small footprint/quick permitting
- Early cashflow potential

Stibium

Potential Gold
Processing Plant

Korbel

2. Expanded Project – Korbel + RPM + Regional

- Scalable
- Multi-decade mine life
- Multiple mining centers
- Multiple commodities (Au, Sb, Ag, Cu, CMs)
- Higher CAPEX, higher NPV & cashflow
- Significantly increased gold production
- Economies of scale – low AISC
- Nova growth and/or strategic partner funding

1. RPM Starter Mine

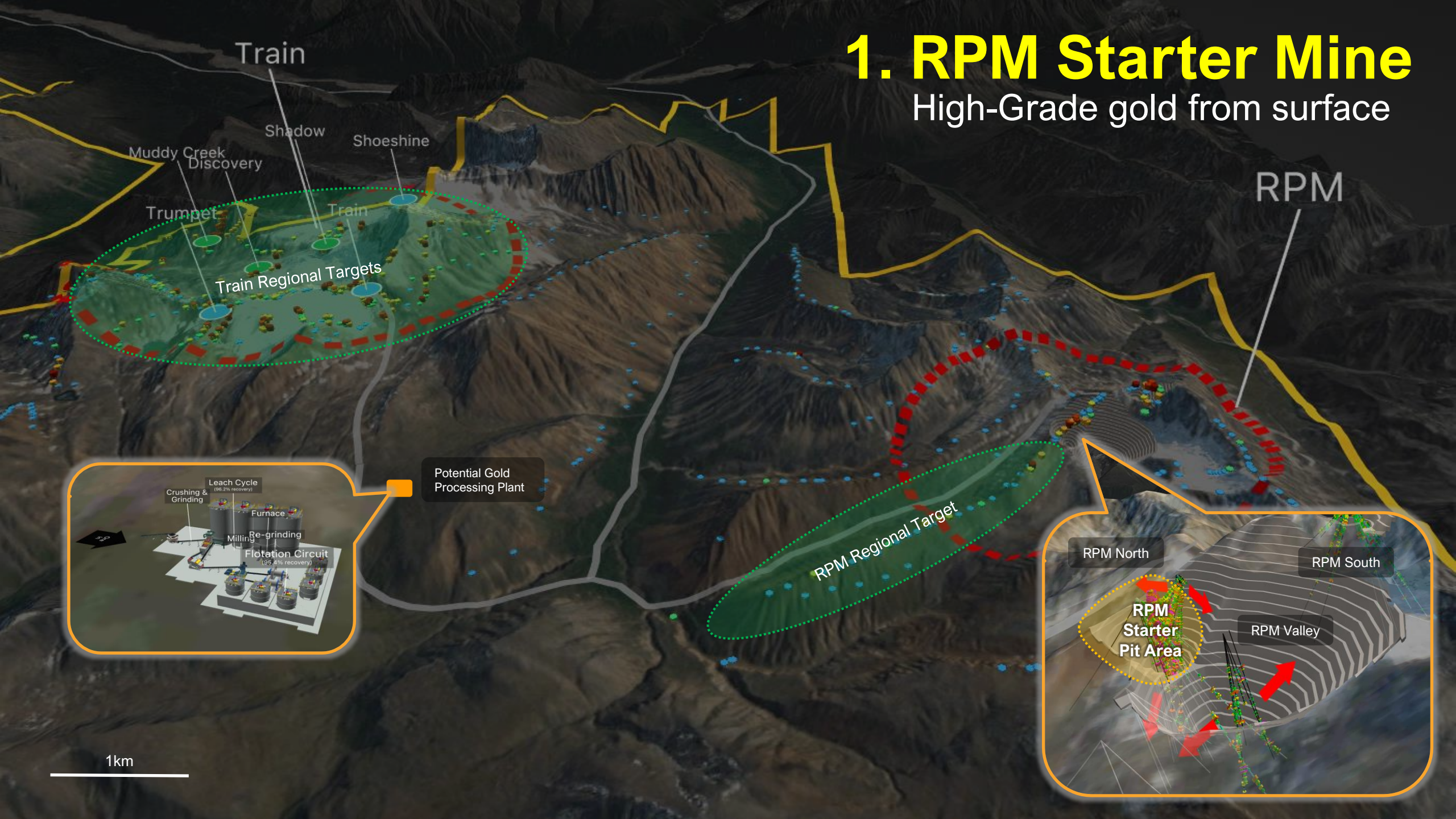
- High-grade from surface (Potentially 5g/t+ Au)
- 6-7 year initial LOM from RPM North
- Potential for expansion ie: RPM, Train, Regional
- Smaller footprint, Lower CAPEX, Nova funded
- Fast track to production and cashflow
- Scalable

Potential Gold
Processing Plant

RPM

1. RPM Starter Mine

High-Grade gold from surface

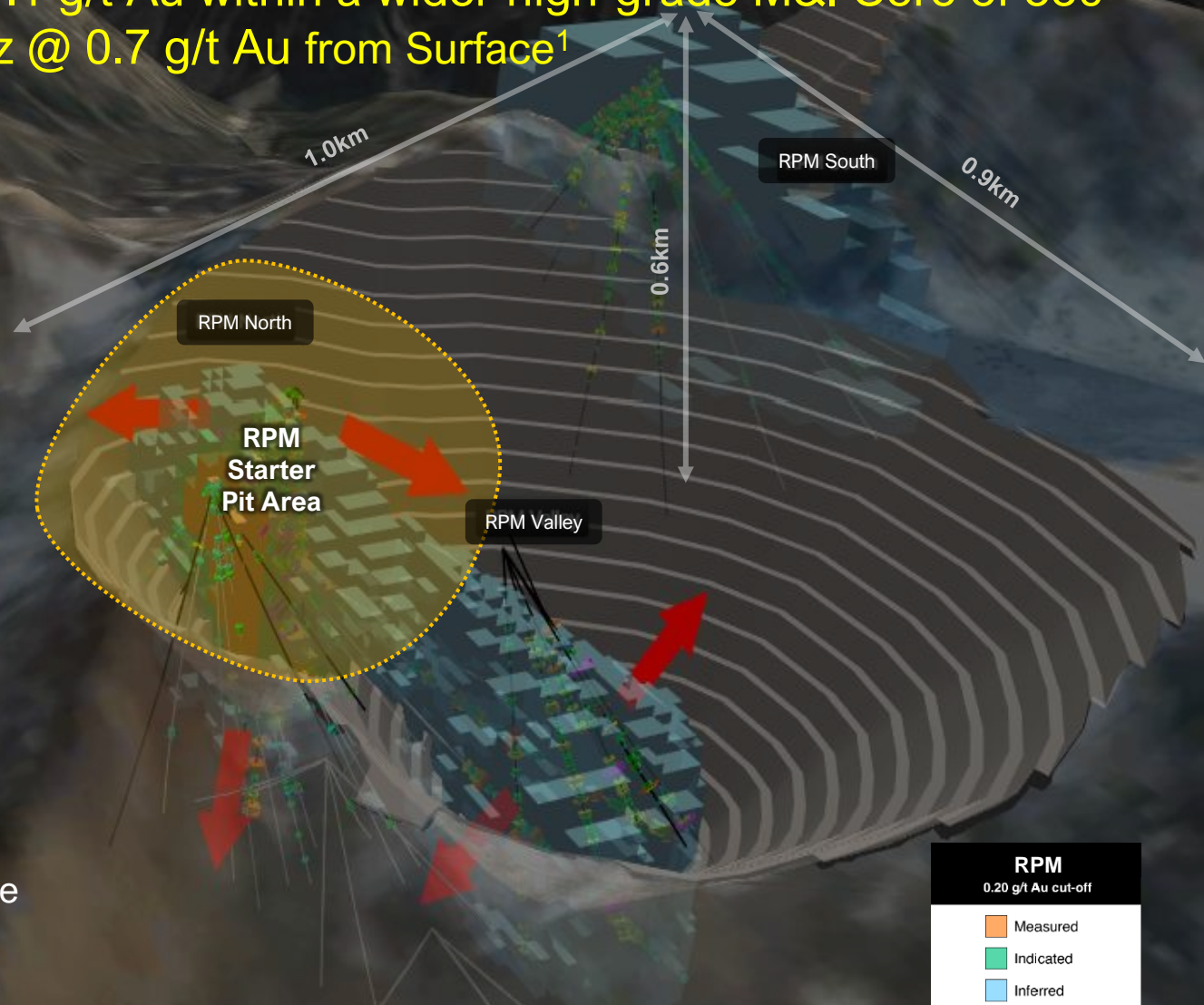


RPM

High-Grade Resource Starter Pit – From Surface and Remains Open

Super high-grade Measured core of 180 Koz @ 4.1 g/t Au within a wider high-grade M&I Core of 330 Koz @ 2.4 g/t Au and a total resource of 1.13 Moz @ 0.7 g/t Au from Surface¹

- RPM North
 - RPM Valley
 - RPM South
- Geological indications show all 3 areas are potentially genetically linked
- ~7,600m (40 holes) from the 2023 and 2024 drilling not included in the current MRE (MRE Update late 2024)
 - Numerous holes drilled outside the current MRE model
 - Close spaced drilling expected to increase the M&I categories for the FS
 - Current FS test work indicates the pit slope angles can potentially be increased > 50 degrees
 - FS test work also investigating the potential to heap leach the lower grade ore from RPM with agglomeration
 - Investigating various ore transport options including, trucks, conveyors, cable ways, chutes
 - Drilling at RPM in 2024 focused on growing and proving up the measured and indicated resource to ore reserves for the FS

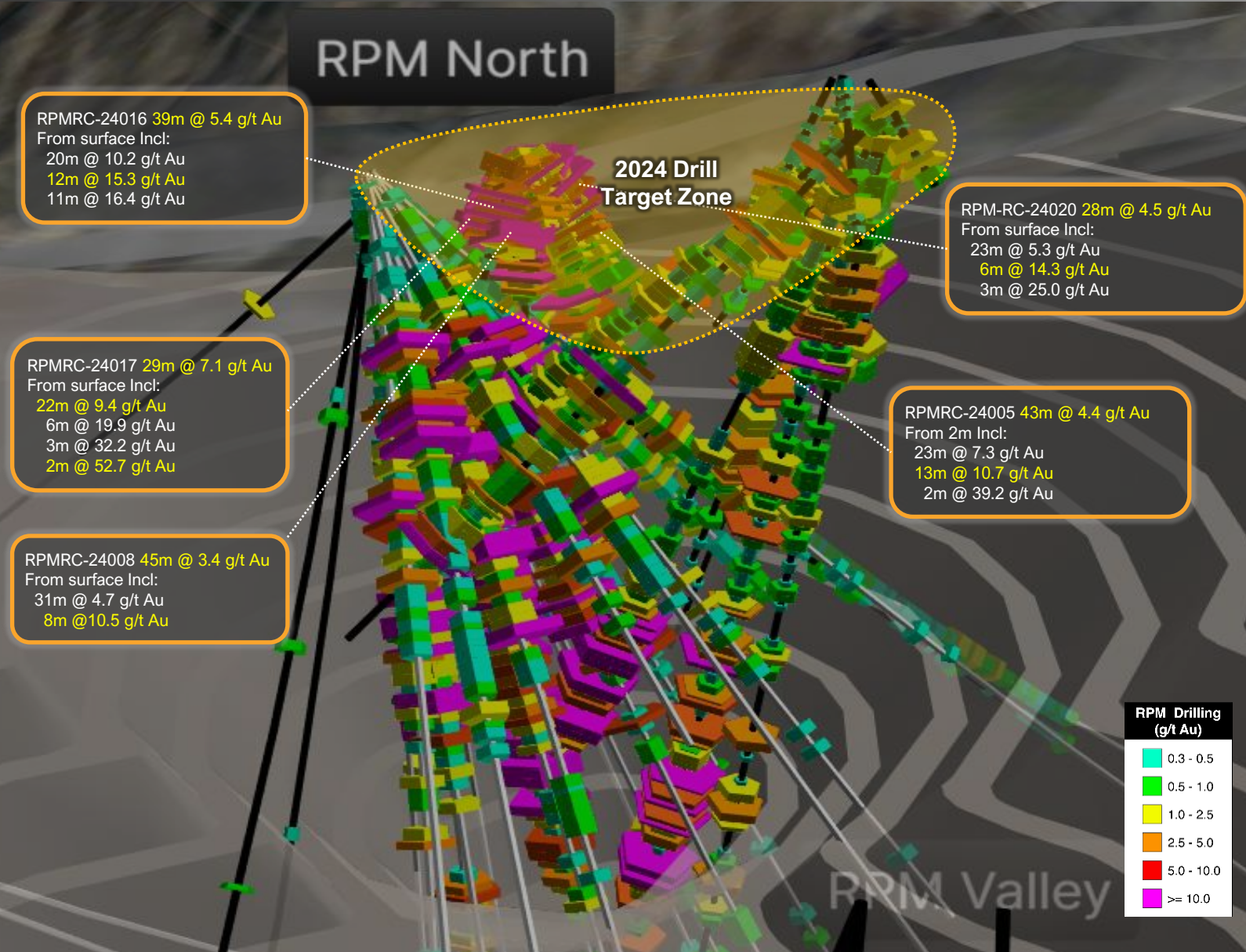


RPM Exploration – 2024 Drill Results

Thick High-Grade Gold Drill Intercepts Extending Mineralization to Surface



- 2024 drilling focused on near surface mineralization < 50m depth to support the RPM starter mine
- Over 20 significant broad intercepts from surface grading > 5 g/t Au with a high of 52.7 g/t Au
- Results prove high-grade gold mineralization greater than 2 g/t Au extends to surface above the current Measured (180,000 oz @ 4.1 g/t Au) and Measured and Indicated (330,000 oz @ 2.4 g/t) high-grade core within the existing RPM North resource area
- All holes ended in mineralization
- Extensive surface sampling program conducted in the RPM Regional Area, with assays pending

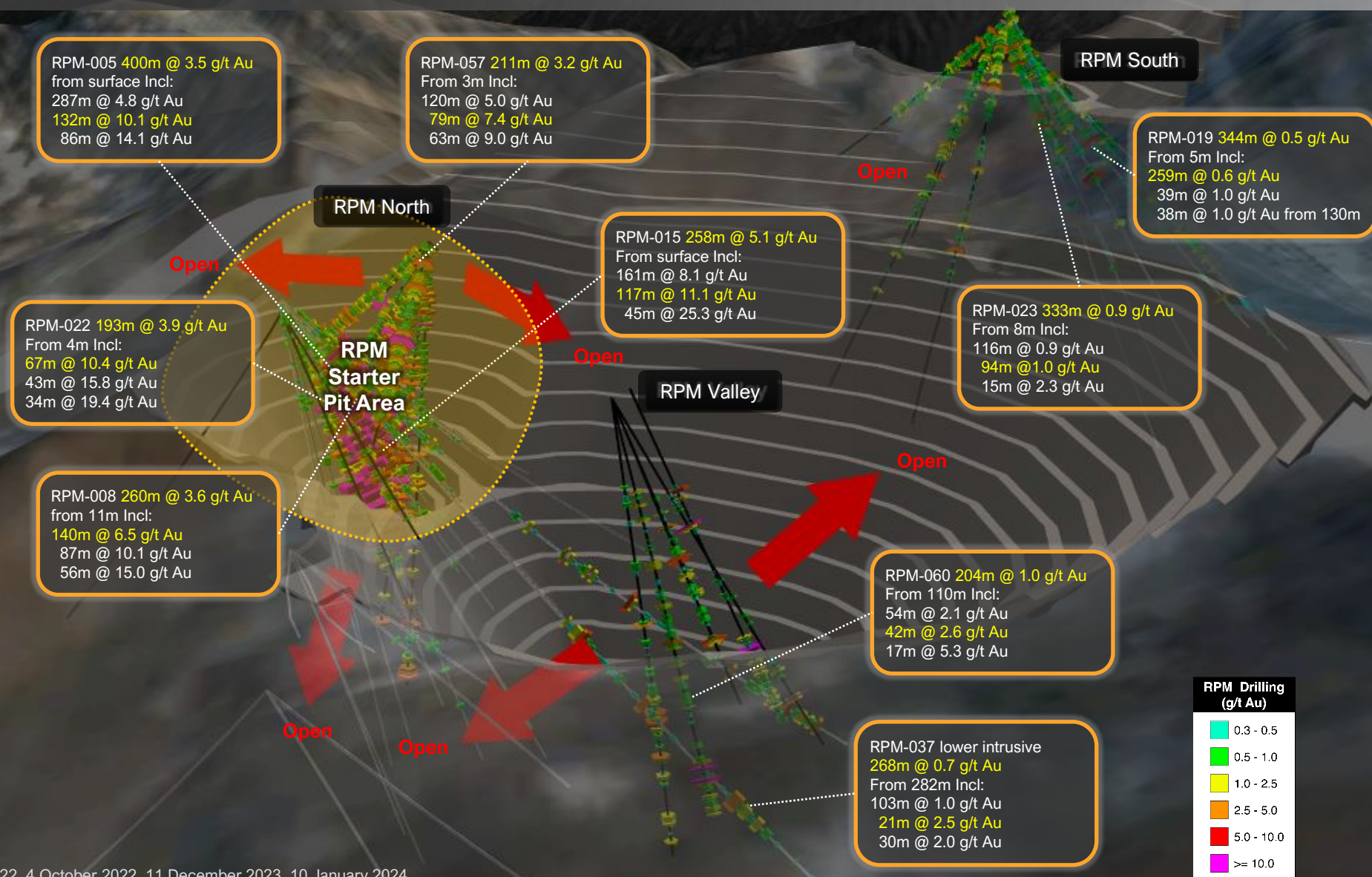


RPM Drilling – Pre 2024 Results

World Class Thick High-Grade Gold Drill Intercepts



- 67 holes, ~20,000m drilled to date, most assayed for multi-elements
- Broad zone of continuous high-grade gold, from surface
- Mineralization remains wide open
- Numerous gold zones already identified
- Resource upside exists to the North of the current drilling where further high-grade surface samples have been discovered on the ridgeline.





2. Expanded Project – Korbeltal + RPM + Regional

Scalability - Large project for both gold and critical minerals with a pipeline spanning decades of potential production from over 20 known prospects

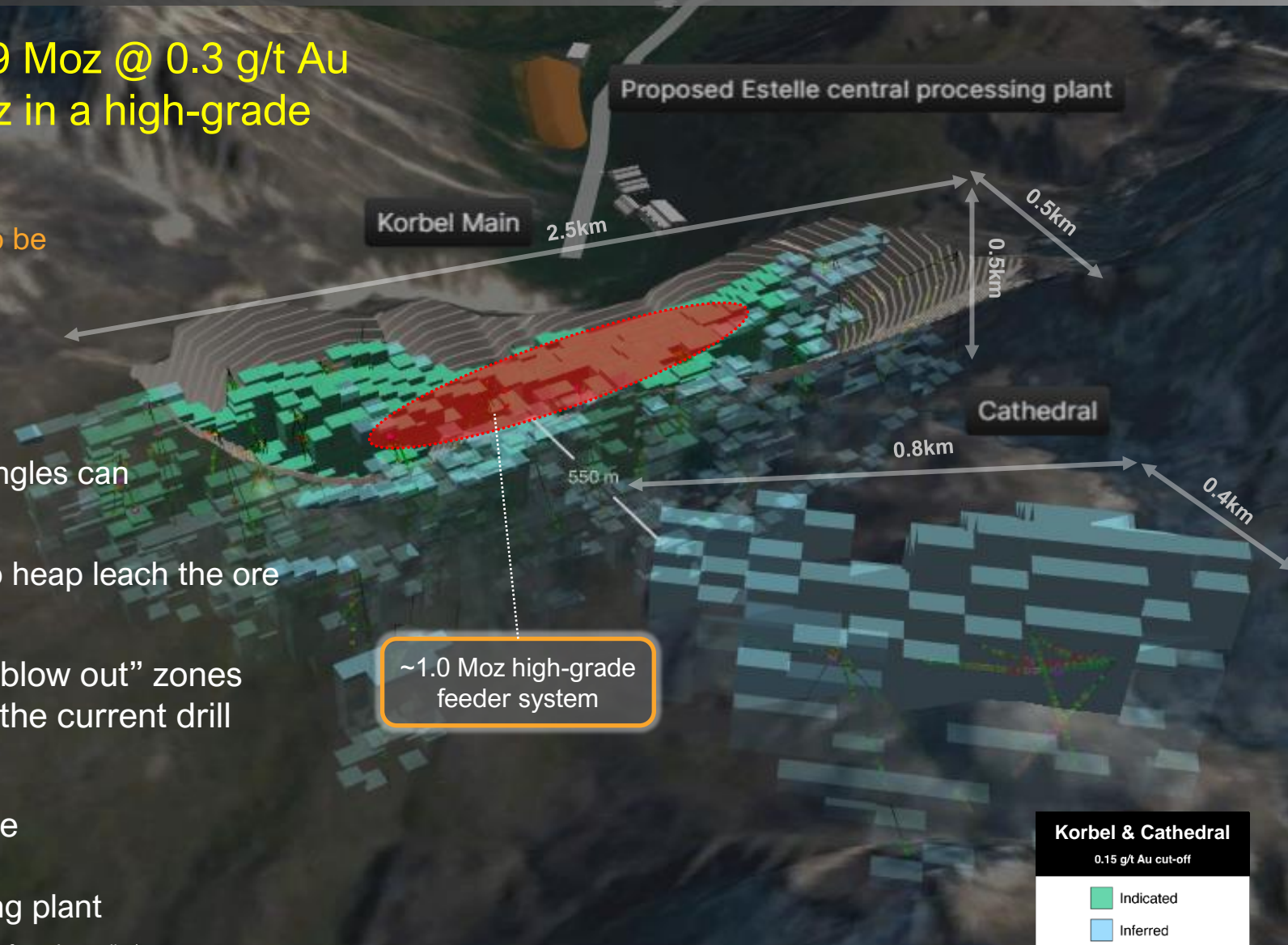
Korbel

Bulk Tonnage Gold – Big, Low Strip, Large Selective Mining Potential, Low Unit Cost, Open Pit



4.05 Moz @ 0.3 g/t Au, Including 2.39 Moz @ 0.3 g/t Au Indicated from surface, with ~1.0 Moz in a high-grade feeder system¹

- Korbel Main } 550m apart with the potential to be genetically linked
- Cathedral }
- All deposits from surface and remain open
- Low strip ratio 0.76:1
- Current FS test work indicates the pit slope angles can potentially be increased > 50 degrees
- FS test work also investigating the potential to heap leach the ore using agglomeration
- Cathedral has indications for higher grade “blow out” zones within the core of the mineralization above the current drill results
- Environmental studies at an advanced stage
- Proposed site for the Estelle central processing plant



¹ Economic pit constrained resources compliant to JORC and S-K 1300 standards. Refer to Appendix 1

Korbel

Bulk Tonnage Gold with Thick Intercepts from Surface



- 214 holes, ~70,000m drilled to date
- Mineralization remains wide open
- Resource upside potential with:
 - High-grade rock chips at Cathedral defining a high priority drill target
 - Size & scale of Cathedral mirrors Korbel Main
 - 6 other exciting untested prospects in the Korbel area



Korbel Main

KBDH-072 308m @ 0.7 g/t Au
from surface Incl:
113m @ 1.0 g/t Au
49m @ 1.5 g/t Au
21m @ 2.5 g/t Au

CTDD-003B 269m @ 0.4 g/t Au
from 168m Incl:
70m @ 0.6 g/t Au
3m @ 2.7 g/t Au

KBDH-012 429m @ 0.6 g/t Au
from 3m Incl:
101m @ 1.3 g/t Au
82m @ 1.5 g/t Au
30m @ 2.4 g/t Au

KBDH-024 549m @ 0.3 g/t Au
from 3m Incl:
97m @ 0.8 g/t Au
15m @ 2.3 g/t Au
3m @ 8.2 g/t Au

KBDH-081 277m @ 0.5 g/t Au
from 3m Incl:
94m @ 1.0 g/t Au
30m @ 1.9 g/t Au
9m @ 4.4 g/t Au

CTDD-001 354m @ 0.3 g/t Au
from 104m Incl:
11m @ 1.1 g/t Au

98 g/t Au

37 g/t Au

114 g/t Au

Cathedral

Korbel Drilling (g/t Au)	
0.1 - 0.3	0.3 - 0.5
0.5 - 0.7	0.7 - 1.0
>= 1.0	

Stibium

Proposed access road to Stibium

High-Grade
Antimony & Gold
Samples

Proposed access road to Korbel

3. Stand Alone Antimony-Gold Starter Mine

High-Grade Antimony-Gold from surface samples (Subject to DoD Grants)

Antimony-Gold Ore
Separation Concentration

Crushing &
Grinding

Milling

Antimony Plant
Gold Plant Oxide Collectors

Furnace
Hopper

Whiskey Bravo Airstrip & Camp

Potential Antimony-Gold
Processing Plant



Stibium

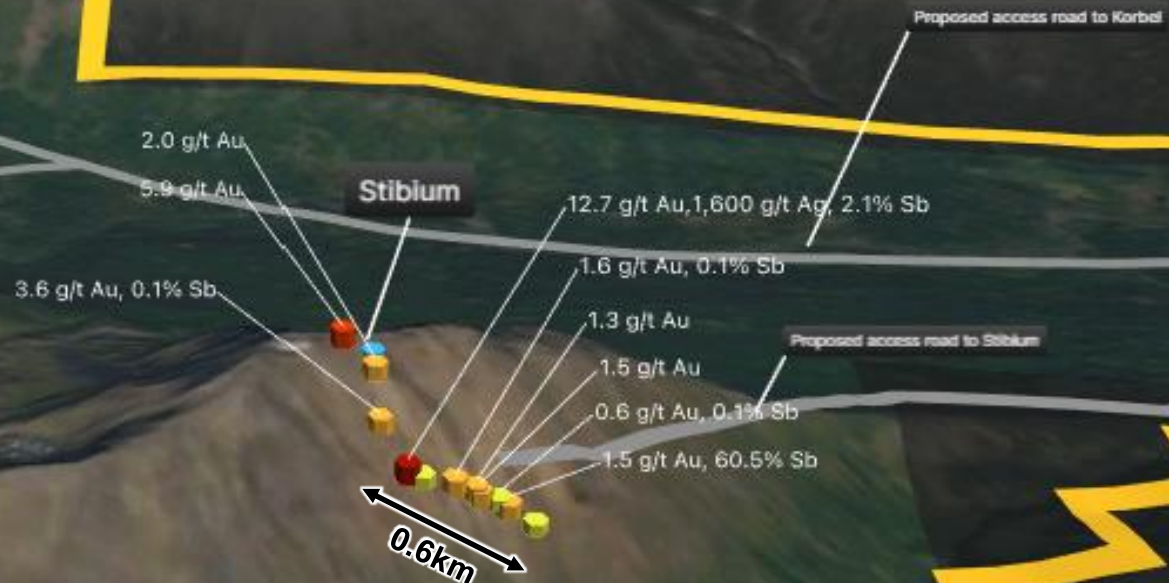
High-Grade Gold & Antimony in Close Proximity to Korbel & the Camp

Korbel



Stibium Surface Sampling Results

- High-grade Antimony coincident with Gold with a high of 12.7 g/t Au and 60.5% Sb (Antimony)
- 2m wide surface outcropping containing stibnite with over 30m in strike length
- Nova is currently investigating a potential small-scale starter mine for antimony at the Stibium prospect to create a concentrate for US domestic supply and potential early cashflow – Subject to DoD funding
- With a minimal impact and footprint required, a streamlined rapid permit process is possible
- Extensive surface sampling program conducted at Stibium in 2024, focusing on antimony, gold and other critical minerals, with assays pending



Rock Chip Sampling - Au g/t

- 0 - 0.2 Au
- 0.2 - 0.5 Au
- 0.5 - 1.0 Au
- 1.0 - 5.0 Au
- > 5.0 Au

Antimony and Other Critical Minerals

Coincident with the Gold at Estelle



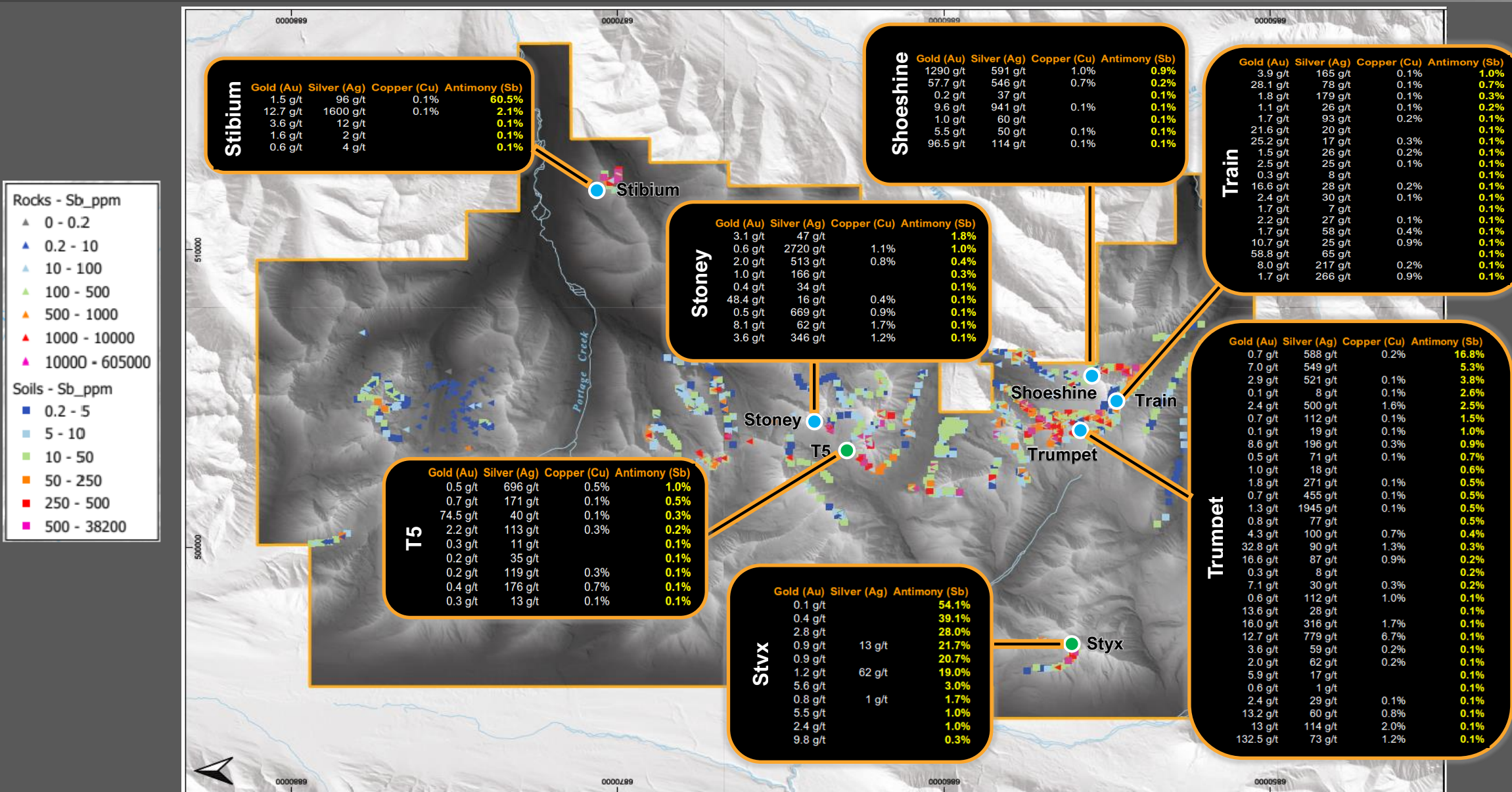
Strong Interest Shown in Estelle's Antimony and CM Potential

- Antimony is a scarce element – Stibnite is the only commercially mined source for antimony and its coincident with gold at Estelle
- China recently announced it is limiting antimony export. US currently has no domestic supply but wants to shore up its antimony and other CM supply chains. = Opportunity for potential US government grants to explore further
- Potentially significant bi-product credits. Commenced scoping level metallurgical studies on antimony and critical minerals processing in the flow sheet
- Currently investigating a potential small-scale starter mine for antimony at the Stibium prospect to create a concentrate for US domestic supply and potential early cashflow
- Also evaluating different approaches to upgrade the downstream processing of antimony and CM to secure the supply chain for the US
- The University of Alaska Fairbanks (UAF), a grantee under the Department of Energy (DoE) CORE CM program is tasked with commercializing CM in Alaska with the Estelle Project now included as a partner in the program
- Through trips to both Washington DC and Juneau, the Company has already built strong relationships with various federal and state government departments and bodies to present Nova as a potential domestic partner to supply the US with antimony and CM , while also actively pursuing grant opportunities to progress development of its antimony and CM resources at Estelle
 - Nova's CEO has attended numerous munitions conferences to pursue DoD and industry collaboration
- Future Market Insights forecasts that the global antimony market is likely to be worth \$4.5 billion by 2032, growing at a 4% CAGR from 2022 to 2032



Antimony at Estelle

Many Surface Samples Discovered > 0.1% Sb (>0.1% Sb considered high-grade)



Significant Exploration Upside Potential

To Date < 5% of the 514km² Property has been Explored

35km long mineralized intrusive corridor

Gold, and highly elevated concentrations of Silver, Copper, Antimony and Other Critical Minerals (CM) have also been discovered across the project

Korbel

- 6 exciting gold targets within close proximity to the proposed Estelle central processing plant
- High-grade rock chips samples up to 114 g/t Au discovered at Cathedral

Stoney

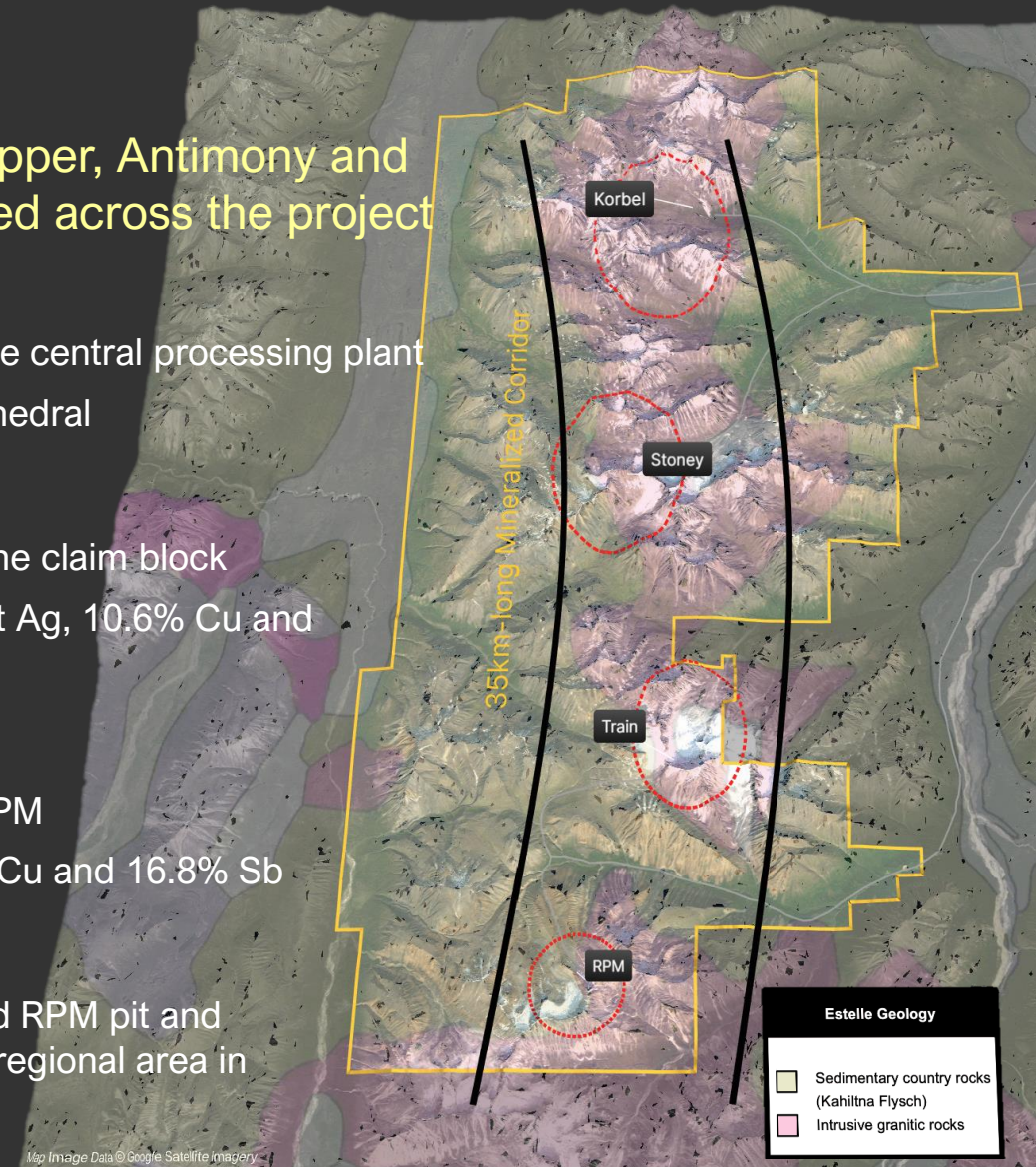
- 7 exciting gold and multi-element targets in the central portion of the claim block
- High-grade polymetallic rock samples include 78.5 g/t Au, 2,720 g/t Ag, 10.6% Cu and 1.3% Sb (Antimony)

Train

- 6 exciting gold and multi-element targets located ~6km north of RPM
- High-grade rock samples include 1,290 g/t Au, 1,945 g/t Ag, 6.7% Cu and 16.8% Sb

RPM

- High-grade rock samples discovered north of the current proposed RPM pit and extensive surface sampling program conducted in the wider RPM regional area in 2024, with assay results pending



Nova's Low-Cost
Pathfinder
Approach to
Exploration

Geology
Observed in
Outcrop

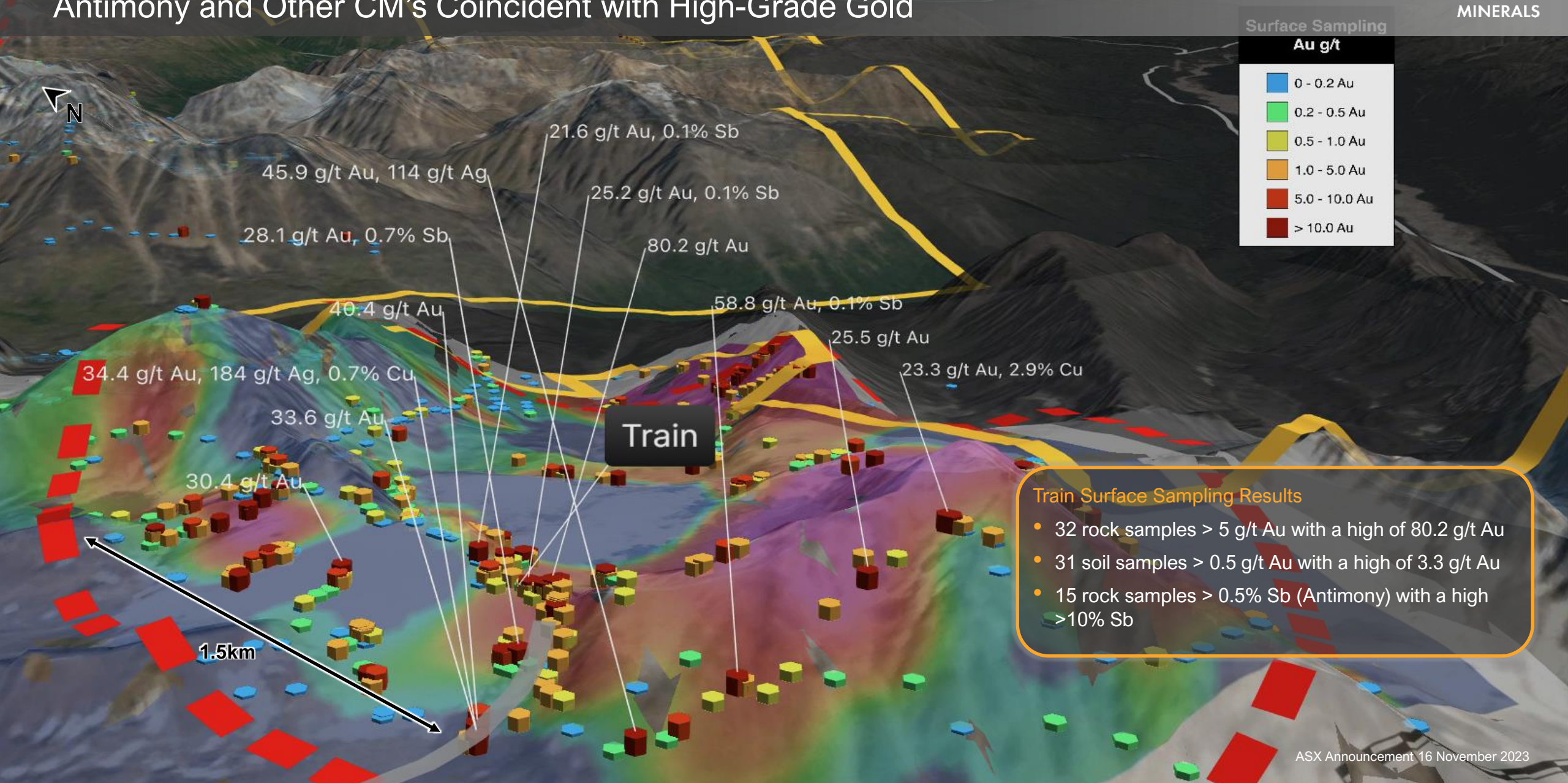
Surface
Mapping &
Sampling

Surface
Anomaly

Drilling

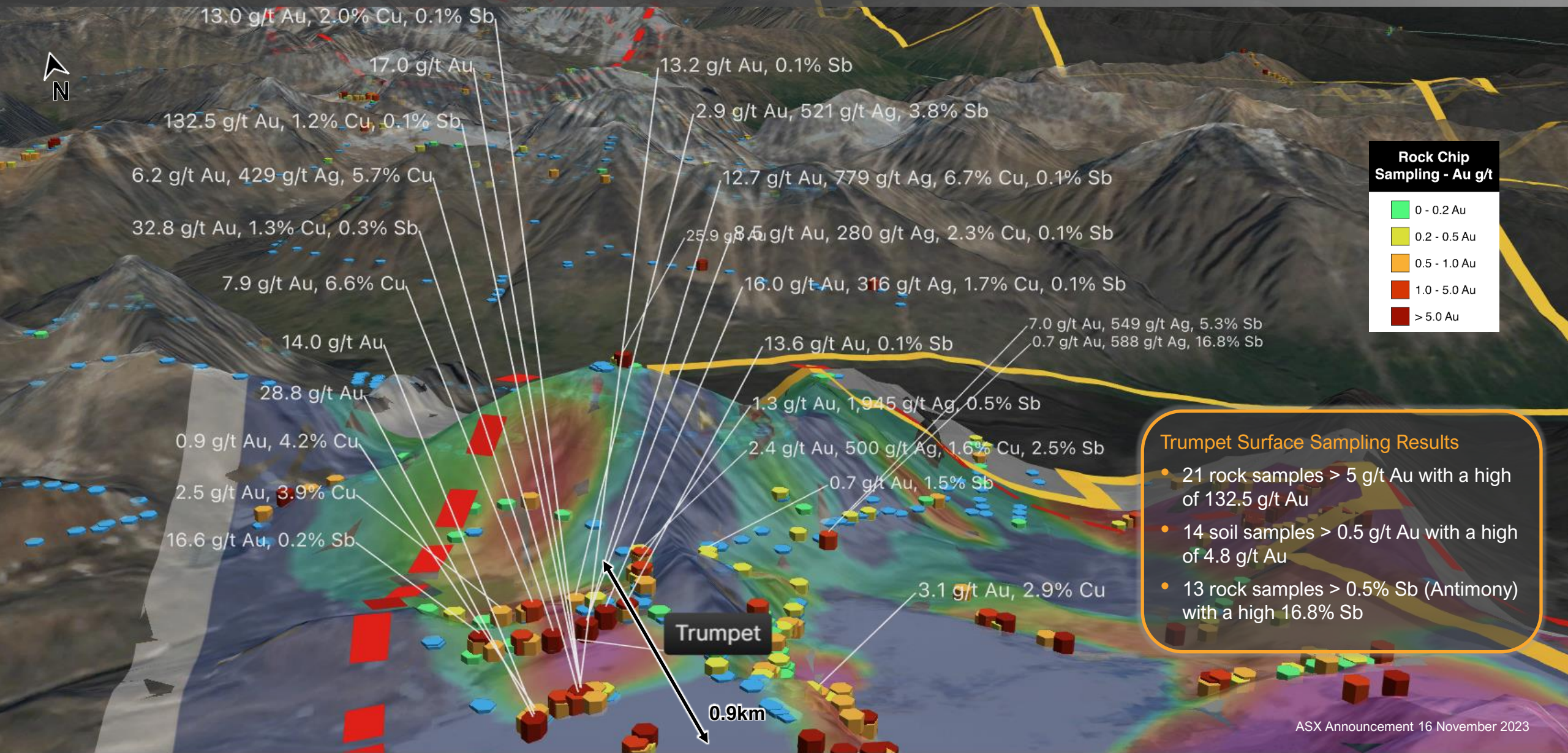
Train

Antimony and Other CM's Coincident with High-Grade Gold



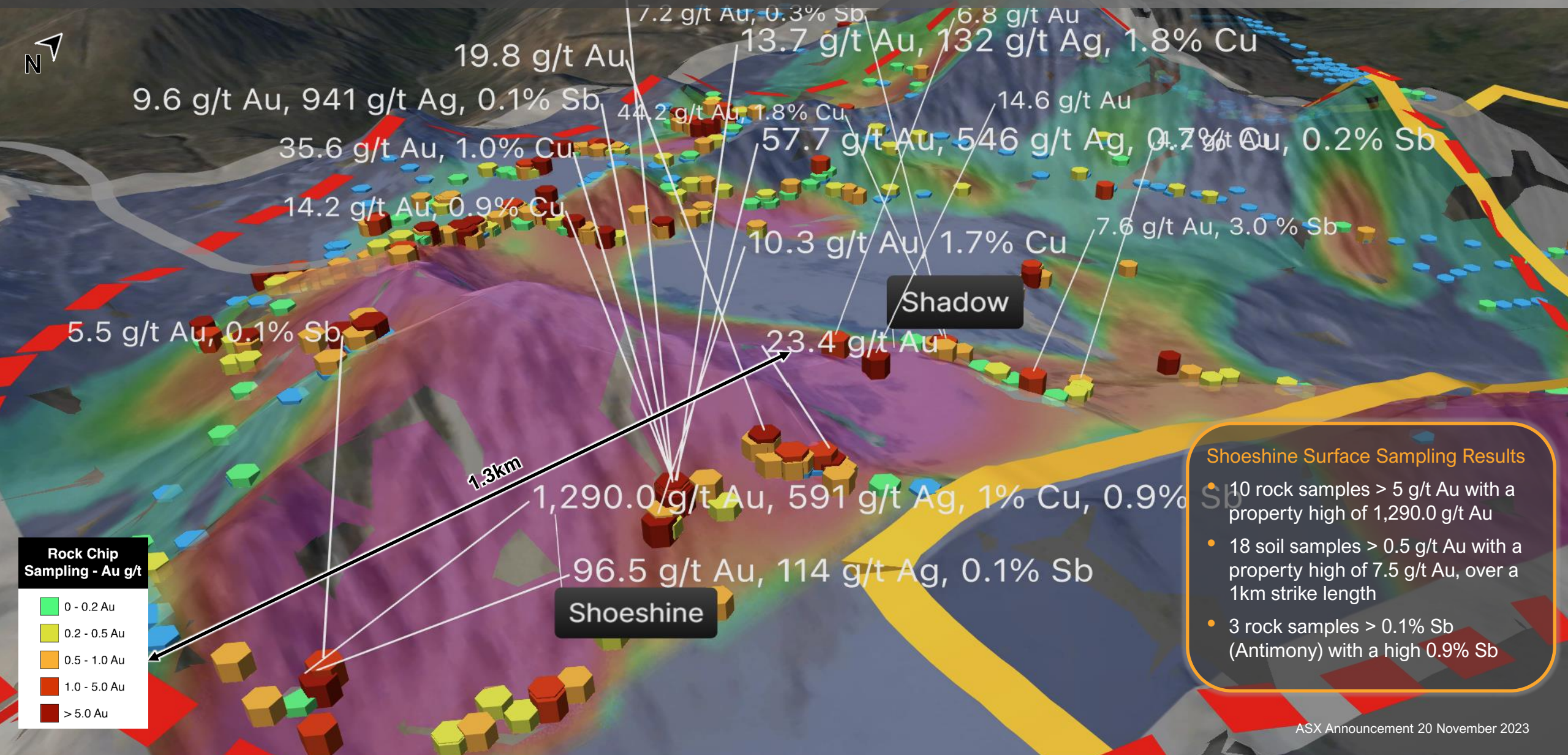
Trumpet

Further High-Grade Antimony & Other CM, Copper, & Silver Coincident with High-Grade Gold



Shoeshine

Abundant Antimony Enriched Style Gold Mineralization

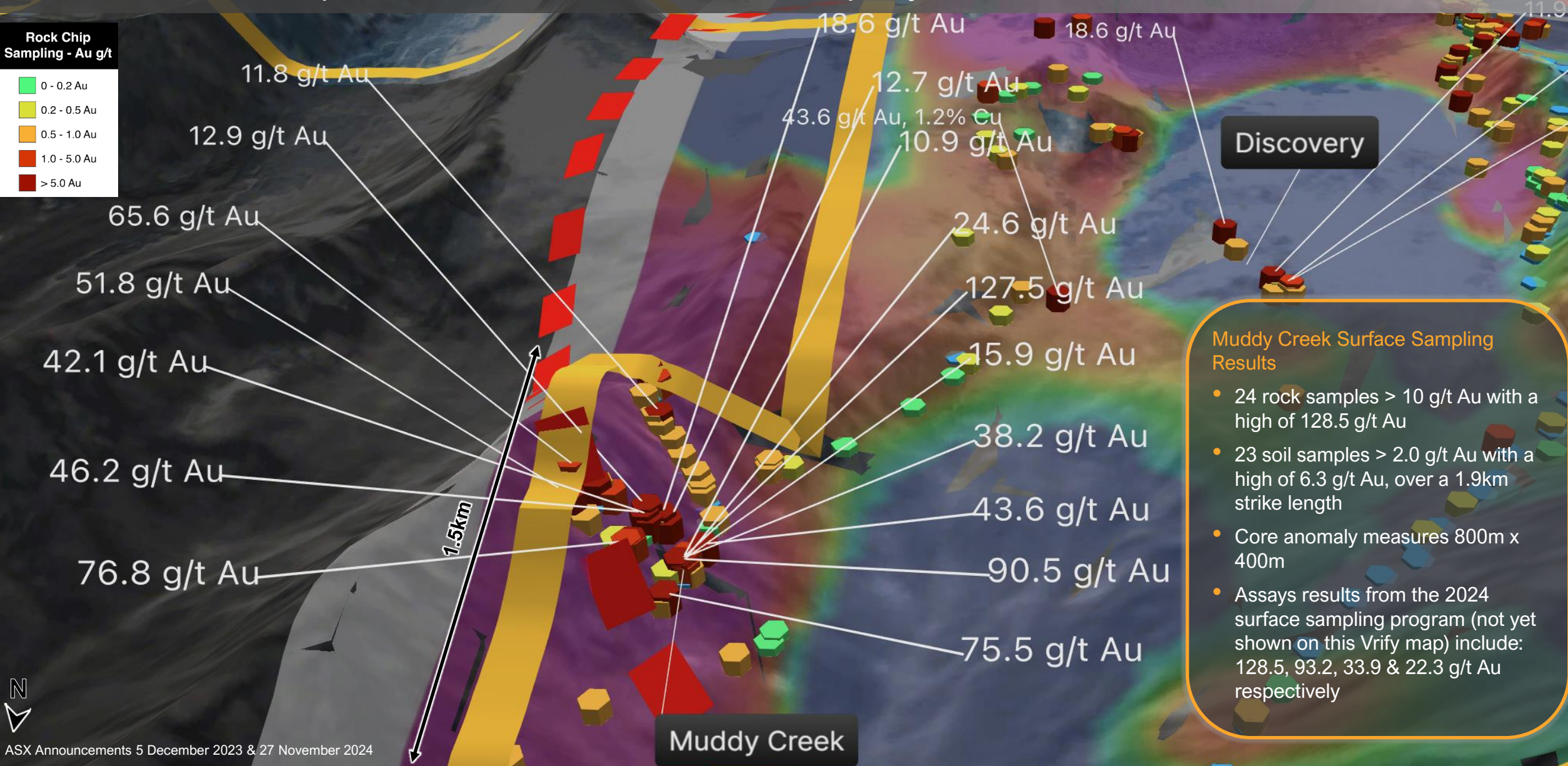
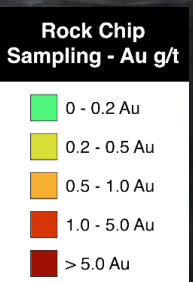


Shoeshine Surface Sampling Results

- 10 rock samples > 5 g/t Au with a property high of 1,290.0 g/t Au
- 18 soil samples > 0.5 g/t Au with a property high of 7.5 g/t Au, over a 1km strike length
- 3 rock samples > 0.1% Sb (Antimony) with a high 0.9% Sb

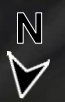
Muddy Creek

One of the Most Impressive Gold Anomalies on the Property



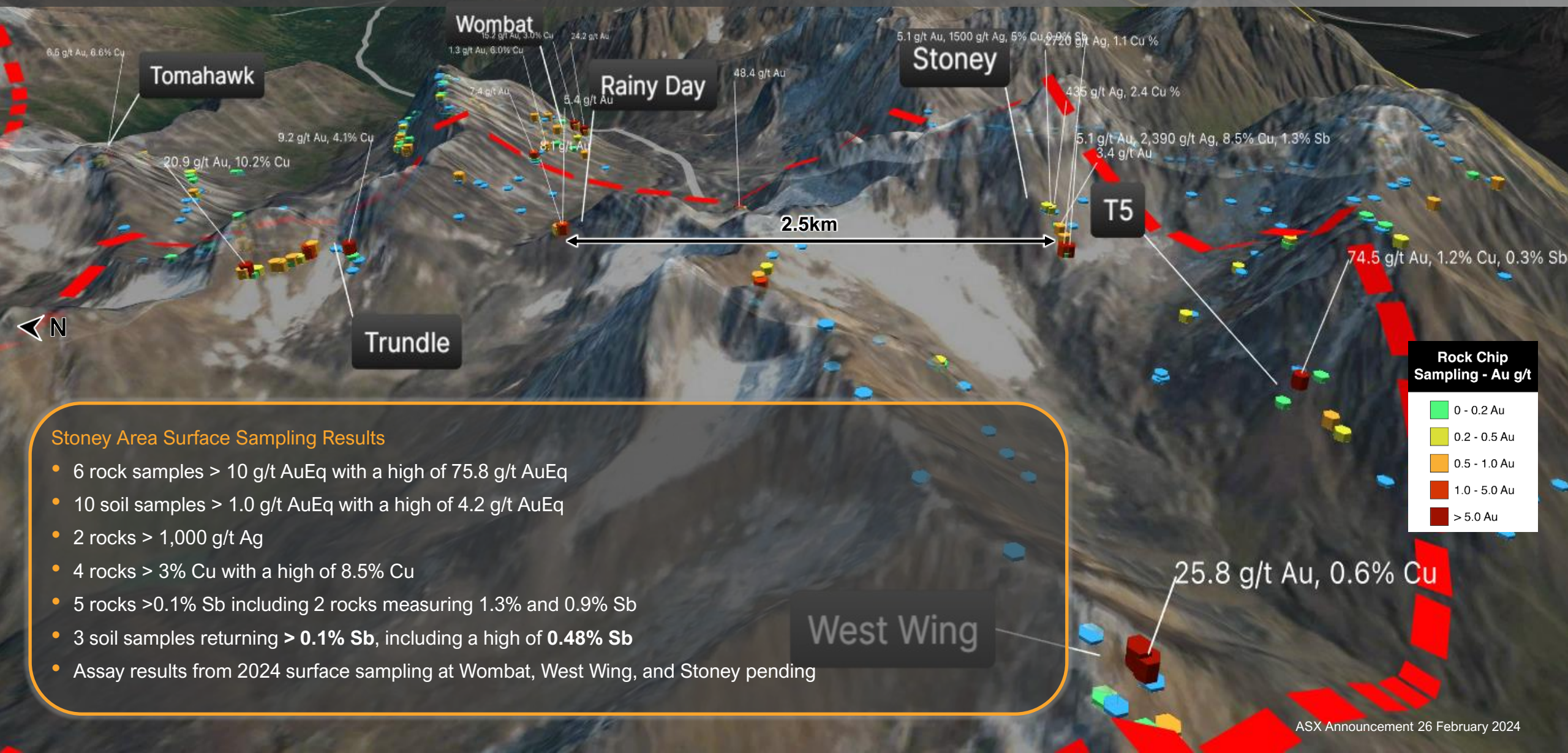
Muddy Creek Surface Sampling Results

- 24 rock samples > 10 g/t Au with a high of 128.5 g/t Au
- 23 soil samples > 2.0 g/t Au with a high of 6.3 g/t Au, over a 1.9km strike length
- Core anomaly measures 800m x 400m
- Assays results from the 2024 surface sampling program (not yet shown on this Vrify map) include: 128.5, 93.2, 33.9 & 22.3 g/t Au respectively



Stoney

High-Grade Gold, Silver, Copper, & Antimony Anomalies Discovered



Stoney Area Surface Sampling Results

- 6 rock samples > 10 g/t AuEq with a high of 75.8 g/t AuEq
- 10 soil samples > 1.0 g/t AuEq with a high of 4.2 g/t AuEq
- 2 rocks > 1,000 g/t Ag
- 4 rocks > 3% Cu with a high of 8.5% Cu
- 5 rocks > 0.1% Sb including 2 rocks measuring 1.3% and 0.9% Sb
- 3 soil samples returning > 0.1% Sb, including a high of 0.48% Sb
- Assay results from 2024 surface sampling at Wombat, West Wing, and Stoney pending

Estelle – Gold & Critical Minerals

Right Place, Right Time, With the Right Commodities



Gold Spot Price
~US\$2,650 oz*



*Source: <https://www.metalsdaily.com/live-prices/gold/> 3/12/24

Antimony Spot Price
~US\$25,450 mt*



*Source: <https://www.metal.com/Antimony/202005060001> 3/12/24

Multi-Element Potential at Estelle

Gold, Antimony, and Other High-Grade Minerals Also Discovered



Estelle could potentially help the US secure its CM supply chain

Mineral Element	Symbol	Earth Average (ppm)	Estelle Maximum (ppm)*	Top Prospects at Estelle where Highly Elevated Concentrations have been Discovered to Date	World Production (%)**		World Reserves (Kt)**		Uses
					USA	China / Russia	USA	China / Russia	
Gold	Au	0.004	1290	All	5	20	3	9	Investment, jewelry, electronics
Antimony	Sb	0.2	605000	Stibium, Styx, Shoeshine, Train, Trumpet	0	85	60	700	Defense tech, munitions, flame retardants, batteries, clean tech, communications, chemicals, ceramics/glass
Silver	Ag	0.075	2720	Stoney, Shoeshine, Train, Trumpet	4	20	23	116	Investment, electricals, photovoltaics, solar, jewelry/silverware, brazing/solder, photography
Copper	Cu	60	100500	Stoney, Shoeshine, Train, Trumpet, Trundle	4	50	44	89	Construction, electricals, transportation, industrial machinery
Bismuth	Bi	0.009	>10000	RPM, Shoeshine, Train, Trumpet	0	80	NA	NA	Chemicals, pharmaceuticals, glass/ceramics, pigments
Cobalt	Co	25	9110	Wombat, Stoney, Train, Trumpet	<1	6	69	390	Super alloys, chemicals, metallics, tools
Gallium	Ga	19	61	Wombat	0	99	0	760	Semi conductors, optoelectronics, integrated circuits
Indium	In	0.25	60	Wombat, Train, Trumpet	0	60	NA	NA	LCDs, alloys/solders, compounds, electrical components, semiconductors, research
Lanthanum	La	39	1480	Wombat	15	70	2300	65000	Catalysts, magnets, ceramics, glass, metallurgical, alloys, polishing
Manganese	Mn	950	21900	Shoeshine, T5	0	5	0	280	Steel, animal feed, bricks, batteries, fertilizers
Scandium	Sc	22	156	Trumpet	W	55	0	NA	Specialty alloys, fuel cells, ceramics, electronics, lasers, lighting
Strontium	Sr	370	1550	Revelation, Train, Trumpet	0	25	NA	16000	Drilling fluids, magnets, pyrotechnics, signals, alloys, pigments/fillers, glass
Tellurium	Te	0.001	444	RPM, Shoeshine, Train, Trumpet, Muddy Creek	W	65	4	8	Solar cells, energy, thermoelectrics, specialty alloys, chemicals, pigments
Tungsten	W	1.3	>10000	Shoeshine, Trumpet, Stoney, RPM, Revelation	0	90	NA	2100	Tools, specialty alloys, electrical, chemicals
Yttrium	Y	33	>500	Trumpet, Stoney	0	90	NA	NA	Catalysts, ceramics, electronics, lasers, metallurgy, phosphors

* Source ALS laboratory analysis ICP_MS61 , Dataset includes 1844 rock and soil exploration samples across Estelle project area.

** Source USGS Mineral Commodity Summaries 2023,

NA - Data not available

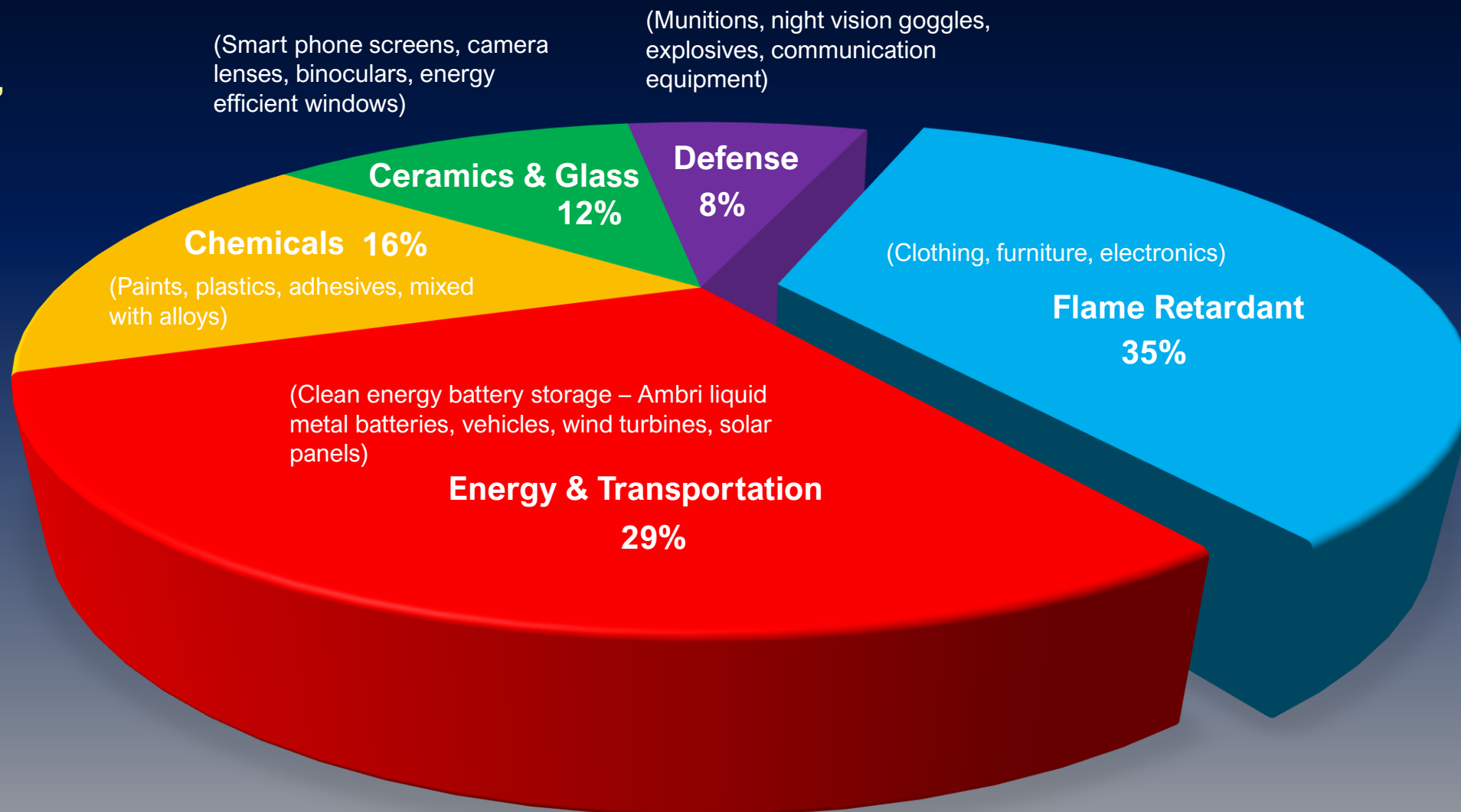
W - Information withheld to avoid disclosing company proprietary data

Antimony Uses (USGS)

The Most Important Critical Mineral You have Never Heard Of

Key properties - heat and flame resistance, anti-corrosion, and its ability to harden and strengthen certain materials and metals

Strategic critical mineral that is used in all manner of civil and defense applications



World Antimony Production 2022 (USGS)

99% of the World's Antimony Supply Comes from 7 Countries

The US currently does not have any domestic supply. US critical minerals supply chain risk

Bolivia 2%



Turkey 1%



Tajikistan 16%



China 54%



Myanmar 4%



Russia 18%



Australia 4%

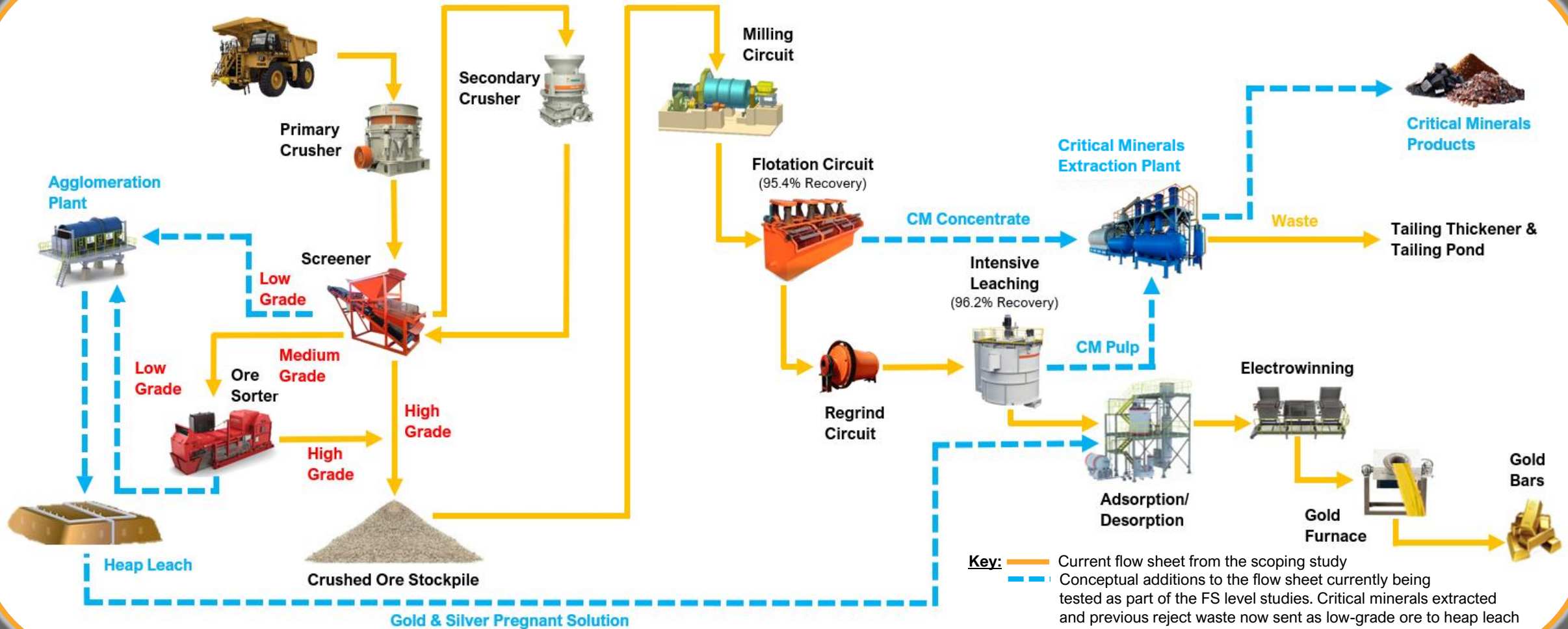


But Estelle can change this, and we have already built strong relationships with both US Federal and State government bodies

Proven & Robust Flowsheet

Simple Metallurgy for Easy Gold Liberation - A Big Cost Differentiator

Further Improvements being Tested as Part of the Current FS Level Studies



A Path of Value Accretion Opportunities

Significant Value Upside as the Project Continues to De-Risk



2024

2025

2026

2027

2028

Gold, Antimony, and Critical Minerals Resource Drilling and Upgrading

Ongoing Systematic Exploration Across the Estelle Gold and Critical Minerals District

Scoping Study - Korbel (Phase 1) - Completed February 2022

Scoping Study - Korbel + RPM (Phase 2) - Completed May 2023

Estelle Development Options:

Option 1: RPM Starter Mine

Feasibility Study (RPM North Starter Pit)

Expansion Plans at Scoping Level (RPM+Korbel+Regional)

Long Lead Items Ordered

Permitting & Finance

Construction

First Gold Pour

Option 2: Expanded Project - RPM + Korbel + Regional

Feasibility Study (Expanded Project)

Long Lead Items Ordered

Permitting & Finance

Construction

Expanded Gold Production

Option 3: Stand-Alone Antimony-Gold Starter Mine (In Parallel with Option 1, with DoD Funding)

Resource & Expansion Drilling at Stibium

Metallurgical & Process Test Work

Long Lead Items Ordered

Permitting & Finance

Construction

Antimony-Gold Production

All timelines subject to assay lab turn arounds, market and operating conditions, all necessary approvals, regulatory requirements, weather events and no unforeseen delays

Team with the Experience to get Estelle into Production



Christopher Gerteisen
Executive Director & CEO

Over 30 years' experience managing and advancing resource projects from green fields, through development and into production across North America, Australia and Asia



Richard Beazley
Non-Executive Chairman

Internationally experienced mining professional and director with over 35 years of experience in senior corporate, operational and project development roles



Louie Simens
Executive Director

Over 20 years' experience managing and operating multiple business with large projects in the building, mining and civil industries. Maintains extensive networks in the mining and financial industry



Craig Bentley
Director Finance & Compliance

Over 30 years commercial and finance experience working in senior roles within multinational private enterprises as well as auditing for Ernst and Young



Avi Geller
Non-Executive Director

Extensive investment experience and a deep knowledge of corporate finance, including capital markets, venture capital, hybrid, debt and private equity



Hans Hoffman
Head of Exploration

20 years' experience developing, conducting, and managing geotechnical engineering and mineral exploration for resource development projects in Alaska

Experienced management who have collectively personally invested over USD\$5m and who are committed to growing Nova Minerals into a global tier 1 gold producer by developing the Estelle Gold Project

North American Peers











Alaska State Governor Mike Dunleavy on the RPM drill pad in August 2023

All data from publicly available information on the respective company websites

1. Market Caps as of 3 December 2024

2. Canadian market caps converted using CAD\$0.71 to USD and AUD market caps converted using AUD\$0.65 to USD

3. All Mineral Resource Estimates include, Measured, Indicated and Inferred resources, and where appropriate are also inclusive of Reserves, and compliant to JORC, S-K 1300, or Ni 43-104 standards as noted

	 (ASX: NVA NASDAQ: NVA FRA: QM3)	 (NASDAQ: USGO)	 (TSX.V:NFG NYSE: NFGC)	 (TSX-V: SGD OTCQB: SNWGF)
Studies/Reports Completed	✓ JORC Economic Pit Constrained MRE & S-K 1300 Initial Assessment Technical Report Summary	✓ S-K 1300 Initial Assessment Technical Report Summary	✓ Ni 43-101 Technical Report Exploration Update	✓ Ni 43-101 Technical Report Mineral Resource Estimate
Mineral Resource Estimate	✓ 5.2 Moz Au, Incl 2.7 Moz M&I Nova 85% interest 4.4 Moz Au, 2.3Moz M&I (476mt @ 0.3 Au)	✓ 7.2 Moz Au, Incl 3.9 Moz Indicated (493mt @ 0.5g/t Au)	✗	✓ 7.3 Moz Au, Incl 4.0 Moz Indicated (Indicated 76mt @ 1.66g/t Au & Inferred 81mt @ 1.25g/t Au)
District Scale	✓ 200mi ² State of Alaska claims along a 20mi long mineralized trend with 20+ prospects	✓ 135mi ² State of Alaska claims with 14 prospects	✓ 1,033mi ² Newfoundland claims	✓ 1,740mi ² Yukon claim tenements over 7 projects with 35+ prospects
Tier 1 Location	✓ Alaska, USA	✓ Alaska, USA	✓ Newfoundland, Canada	✓ Yukon, Canada
Similar Terrain				
Mineralization	✓ Intrusion Related Gold System (IRGS), Polymetallic Au-Ag-Cu & Porphyry Cu-Au	✓ Porphyry Cu-Au	✓ Gold mineralization in mafic intrusive rocks hosted in middle Ordovician sediments, of sub-greenschist to greenschist metamorphic grade.	✓ Intrusion Related Gold System (IRGS)
Access	✓ Winter road and air, with West Susitna all weather road progressing	✓ Winter road and air, with West Susitna all weather road progressing	✓ 9mi west of Gander and highway	✓ Winter road and air
World Class Drill Results	✓ 1,400 g/m RPM-005 400m @ 3.5 g/t Au 132m @ 10.1 g/t Au & 86m @ 14.1 g/t Au	✗ 334 g/m WH04-05 304m @ 1.1 g/t Au, 3.74 g/t Ag, 0.32% Cu	✓ 2,840 g/m 27.05m @ 105 g/t Au	✓ 1,373 g/m V-23-039 553m @ 2.5 g/t Au 183m @ 4.3 g/t Au & 132m @ 5.0 g/t Au
Drilling	✓ 90,000m drilled to date	✓ 80,000m drilled to date	✓ 500,000m drilled to date	✓ 40,000m drilled to date
Critical Elements	✓ Antimony, Bismuth, Tungsten targets	✗	✗	✗
Market Cap (Incl Investments)	~US\$42M	~US\$150M	~US\$500M	~US\$608M
Market Cap Gold Project	~US\$40M	~US\$150M	~US\$500M	~US\$608M

Nova Minerals Snapshot

(As of 3 December 2024 in USD unless noted)

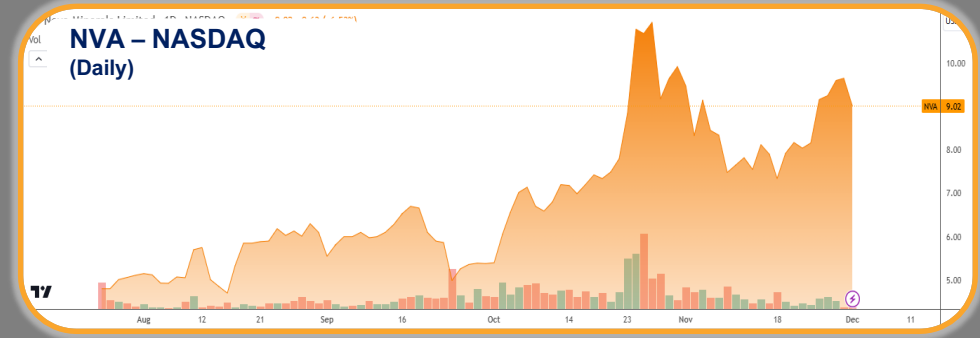


Share Price

NASDAQ ADS* \$9.02
NASDAQ Warrants \$2.25
ASX Shares \$0.235 (AUD)

Market Capitalization

\$42M (\$65M AUD)
Market Capitalization/Resource oz **\$8**

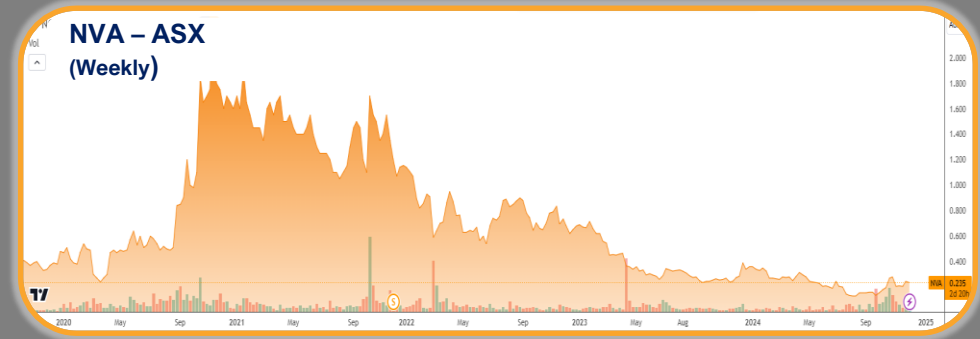


Shares on Issue

275M* *Includes 533k ADS's where 1 ADS = 60 Shares

Cash & Equivalents

~\$5.5M (\$8.5M AUD)
~\$4M Cash (As at 30 September 2024) + liquid investments in Snow Lake Lithium & Asra Minerals

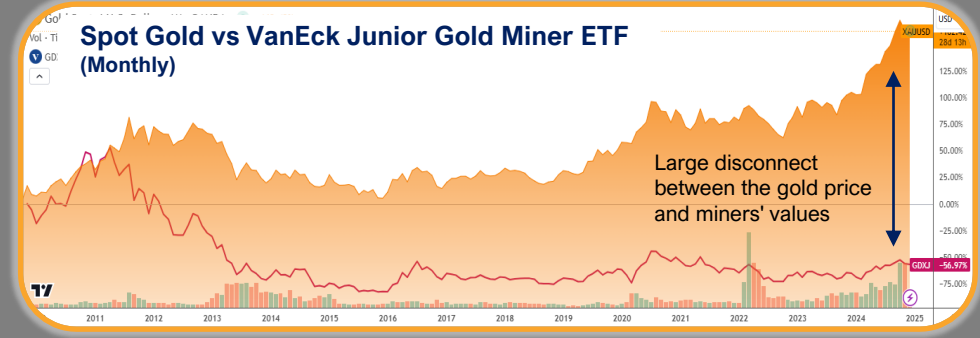


Options & Warrants

9.9M Options various prices & expiry dates
549k Warrants to purchase 1 ADS at various prices & expiry dates

Debt

\$5.4M (\$8.3M AUD)
Nebari 1st tranche convertible facility draw down



Performance Rights

2.4M
Various hurdles

Shareholder Summary

- Directors & Officers 8%
- Institutions 20% (UBS 4.5%)
- Strategic 10%
- Nebari Gold Fund 2%
- Top 50 Holders 51%

Nova's Value Drivers



Favourable jurisdiction and tenure - All on State of Alaska lands (No federal or native titles)



Aspiring Worldclass gold producer



Experienced CEO and management team



Very low discovery cost ~ US\$5/oz or 58oz added for every metre drilled



Open pit, low strip ratio, bulk minable deposits



Thick high-grade ore zones from surface

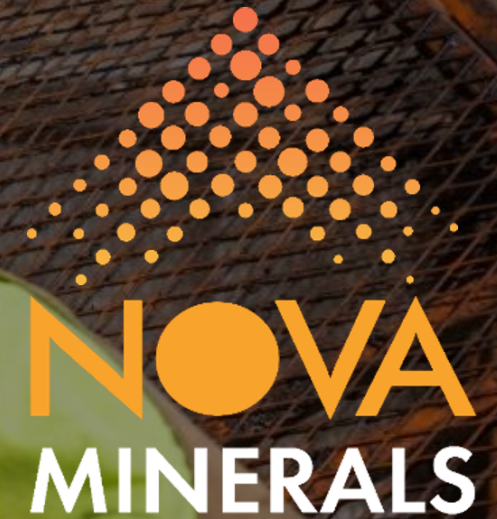


Significant resource upside potential



Multi-element potential – Gold, Silver, Copper, Antimony, other Critical Minerals

Follow Us



Nova Minerals Limited

T: +61 3 9537 1238
E: info@novaminerals.com.au
W: www.novaminerals.com.au

Main Operations

Whiskey Bravo Airstrip
Matanuska-Susitna Borough,
Alaska, USA
1150 S Colony Way Suite 3-440,
Palmer, AK 99645

Office

Suite 5
242 Hawthorn Road
Caulfield
Victoria 3161
Australia

ASX: **NVA** | NASDAQ: **NVA** | FRA: **QM3**

Appendix 1: Mineral Resource Estimates (MRE)

JORC Compliant Global MRE

- High confidence, conservative Global MRE 9.9 Moz – April 2023
- Currently excludes ~7,600 of drilling undertaken in the 2nd half of 2023 and in 2024
- Includes a super high-grade zone of 180 Koz @ 4.1 g/t Au Measured
- Based on ~ 83,000m of RC and high-quality oriented diamond core drilling
- Comprises of 4 large IRGS deposits
- Resources from surface and all deposits remain open with significant potential upside
- Suitable for large scale open pit mining

Deposit	Cutoff	Measured			Indicated			Inferred			Total		
		Tonnes Mt	Grade Au g/t	Au Moz	Tonnes Mt	Grade Au g/t	Au Moz	Tonnes Mt	Grade Au g/t	Au Moz	Tonnes Mt	Grade Au g/t	Au Moz
RPM North	0.20	1.4	4.1	0.18	3.3	1.5	0.16	26	0.6	0.48	31	0.8	0.82
RPM South (Maiden)	0.20							31	0.4	0.42	31	0.4	0.42
Total RPM Mining Complex		1.4	4.1	0.18	3.3	1.5	0.16	57	0.5	0.90	62	0.6	1.24
Korbel Main	0.15				320	0.3	3.09	480	0.2	3.55	800	0.3	6.64
Cathedral (Maiden)	0.15							240	0.3	2.01	240	0.3	2.01
Total Korbel Mining Complex					320	0.3	3.09	720	0.2	5.56	1,040	0.3	8.65
Total Estelle Gold Project		1.4	4.1	0.18	323	0.3	3.25	777	0.3	6.46	1,102	0.3	9.89

Appendix 1: Mineral Resource Estimates (MRE)

JORC and S-K 1300 Compliant Economic Pit Constrained MRE for the Estelle Gold Project

Deposit	Cutoff	Measured			Indicated			Measured & Indicated			Inferred			Total		
		Tonnes Mt	Grade Au g/t	Au Moz	Tonnes Mt	Grade Au g/t	Au Moz	Tonnes Mt	Grade Au g/t	Au Moz	Tonnes Mt	Grade Au g/t	Au Moz	Tonnes Mt	Grade Au g/t	Au Moz
RPM North	0.20	1.4	4.1	0.18	3	1.6	0.15	4.4	2.4	0.33	23	0.6	0.45	28	0.9	0.78
RPM South (Maiden)	0.20										23	0.5	0.35	23	0.5	0.35
Total RPM		1.4	4.1	0.18	3	1.6	0.15	4.4	2.4	0.33	46	0.5	0.80	51	0.7	1.13
Korbel Main	0.15				240	0.3	2.39	240	0.3	2.39	35	0.3	0.30	275	0.3	2.70
Cathedral (Maiden)	0.15										150	0.3	1.35	150	0.3	1.35
Total Korbel					240	0.3	2.39	240	0.3	2.39	185	0.3	1.65	425	0.3	4.05
Total Estelle Gold Project		1.4	4.1	0.18	243	0.3	2.54	244	0.3	2.72	231	0.3	2.45	476	0.3	5.17

1. A mineral resource is defined as a concentration or occurrence of material of economic interest in or on the Earth's crust in such form, grade or quality, and quantity, that there are reasonable prospects for economic extraction.
2. The mineral resource applies a reasonable prospect of economic extraction with the following assumptions:
 - Gold price of US\$2,000/oz
 - 5% royalty on recovered ounces
 - Pit slope angle of 50°
 - Mining cost of US\$1.65/t
 - Processing cost for RPM US\$9.80/t and Korbel US\$5.23/t (inclusive of ore sorting for Korbel)
 - Combined processing recoveries of 88.20% for RPM and 75.94% for Korbel
 - General and Administrative Cost of US\$1.30/t
 - Tonnages and grades are rounded to two significant figures and ounces are rounded to 1,000 ounces, subject to rounding

Appendix 2: Characteristics of Bulk Tonnage Mines



Geology and Geometry Come First

- Thick drill intercepts > 100m, and often at lower average grades
- Mineralization at surface with low strip ratios
- Large tonnage moved, but a large proportion of the material is ore, meaning less waste
- Open pit operations using conventional truck and shovel mining methods
- A central processing plant proximal to the ore source requiring short haul distance
- Often include heap leach process circuit for lower cost gold recovery
- Typically produce > 100,000 g/t Au per year at lower AISC's
- Kinross Gold Corp Fort Knox mine is a good example of a highly profitable low grade bulk tonnage mining operations

Proposed Estelle Bulk Tonnage Gold Operation

The mineralized bodies found across the Estelle gold district, are similar in grade, deposit type, style of mineralization, and tonnage potential, to the Fort Knox deposits. The Estelle Gold Project has a current global JORC compliant resource of 9.9 Moz @ 0.3 g/t Au, and the scoping study showed that Korbel and RPM can support large, bulk tonnage and high-grade open pit mining operations, with ideal ore body geometry over the 17+ year LOM, using a conventional truck and shovel mining method and mill operation. As part of the current FS level studies, heap leach agglomeration is also being tested for suitability to the ore bodies to potentially lower costs further

Kinross Gold Corp - Fort Knox Gold Mine

The Fort Knox gold mine, owned by Kinross Gold Corp, is a highly profitable, large scale bulk tonnage open-pit gold mine, located near the city of Fairbanks, Alaska. It is mined by conventional open-pit methods, with ore processed at a mill and heap leach facility. Currently Fort Knox has a remaining resource of 1.9 Moz @ 0.3 g/t Au, having already mined over 9.1 Moz over 27 years, including 290,651 ounces of gold in 2023 at an AISC of US\$1,195 oz.

Appendix 3: Ore Sorting

Rejecting Low-Grade Material Before Milling with the Reject Ore Sent to Heap Leach

How Ore Sorting Works

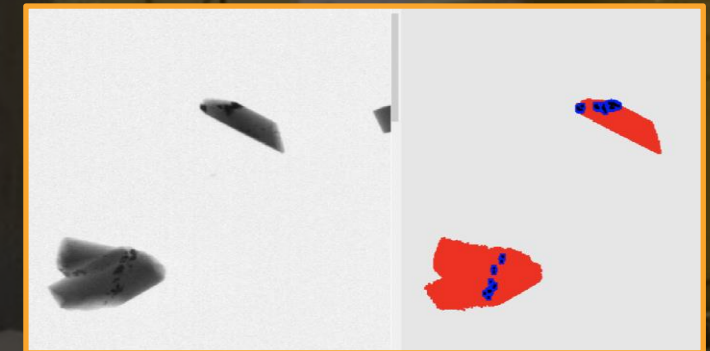
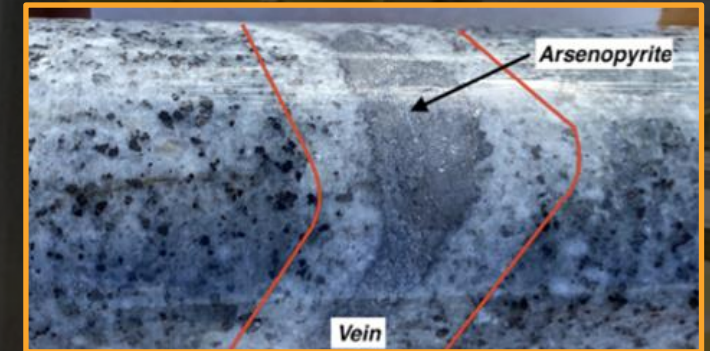
- Each individual rock is classified as being ore or reject using real-time online sensors
- The sensor data is quickly analyzed allowing individual particles to be sorted with high-grade ore sent for milling and the reject ore sent to heap leach

Benefits of Including Ore Sorting in the Flowsheet

- Optimizes the processing of ore material allowing a reduction in the cut-off grade, and a higher mill feed grade
- Early rejection of low-grade material before milling reduces the size of the plant required = Lower CAPEX and OPEX costs
- OPEX also reduced due to a reduction in the energy, water and reagent consumption
- Material handling and tailings production reduced with reject ore sent to heap leach = Potentially higher gold production
- Ore sorters now form part of the flow sheet in numerous successful mining companies

Nova's Ore Sorting Test Work

- To date Nova's extensive testing at Tomra has shown that ore sorting is proven to work exceptionally well, and can potentially provide an up to 10 X uplift in grade
- Testing so far has only looked at XRT density sorting, but Steinert's ore sorters can also sort based on a combination of XRT, colour, laser, and induction sensors
- Testing using Steinert's multi-sensor ore sorters is currently underway on ore from both Korbel and RPM
- A bulk, up to 200 kt, pilot scale ore sort test program is also currently being planned



XRT Scan of Product after Stage 1 (**6.06 g/t**).
Blue and Black = Arsenopyrite sheeted vein.
Red = Granite Waste Rock.