

Sunday Creek

An Expanding and Significant Global Gold Discovery

Corporate Update: 21 February 2025



Important Information

Overview: This presentation (this “Presentation”) dated February 21, 2025, has been prepared by Southern Cross Gold Consolidated Ltd (“SXGC” or the “Company”) and is authorized for release by Managing Director, Michael Hudson.

Accuracy of Information: Readers are directed to the public disclosure of Southern Cross Gold Consolidated Ltd (“SXGC”) available under SXGC’s profile on SEDAR+ (“SEDAR+”) at www.sedarplus.ca. Information contained in this presentation was believed to be accurate at the time it was posted but may be superseded by more recent public disclosure of SXGC. SXGC makes no representations or warranties as to the accuracy, reliability, completeness or timeliness of the information in this presentation.

Forward-Looking Information: Some of the statements contained in this presentation may be forward-looking statements or forward-looking information within the meaning of applicable securities laws (collectively, “forward-looking statements”). Forward-looking statements are typically identified by words such as: believe, expect, anticipate, intend, estimate, postulate and similar expressions, or which by their nature refer to future events. SXGC cautions investors that any forward-looking statements by SXGC are not guarantees of future performance, and that actual results may differ materially from those in forward looking statements as a result of various factors, including, but not limited to, risks and uncertainties associated with exploration and development; uncertainties relating to estimates of mineral resources including uncertainty that mineral resources may never be converted into mineral reserves, capital and other costs varying significantly from estimates, changes in world metal markets, changes in equity markets, that the political environment in which SXGC operates will continue to support the development and operation of mining projects, the threat associated with outbreaks of viruses and infectious diseases may affect SXGC, whether directly or through effects on employee health, workforce productivity and availability (including the ability to transport personnel to where SXGC has operations), travel restrictions, risks related to negative publicity with respect to SXGC or the mining industry in general; planned drill programs and results varying from expectations, delays in obtaining results, equipment failure, unexpected geological conditions, local community relations, dealings with non-governmental organizations, delays in operations due to permit grants, environmental and safety risks, SXGC’s ability to identify one or more economic deposits on its properties, to produce minerals from its properties successfully or profitably, to continue its projected growth, to raise the necessary capital or to be fully able to implement its business strategies.

Although the Company believes its expectations are based upon reasonable assumptions and has attempted to identify important factors that could cause actual actions, events or results to differ materially from those described in forward-looking statements, there may be other factors that cause actions, events or results not to be as anticipated, estimated or intended. There can be no assurance that forward-looking information will prove to be accurate, as actual results and future events could differ materially from those anticipated in such information. As such, these risks are not exhaustive; however, they should be considered carefully. If any of these risks or uncertainties materialize, actual results may vary materially from those anticipated in the forward-looking statements found herein. Due to the risks, uncertainties, and assumptions inherent in forward-looking statements, readers should not place undue reliance on forward-looking statements.

Forward-looking statements contained herein are presented for the purpose of assisting investors in understanding the Company’s business plans, potential financial performance and condition and may not be appropriate for other purposes.

The forward-looking statements contained herein are made only as of the date hereof. The Company disclaims any intention or obligation to update or revise any forward-looking statements, whether as a result of new information, future events or otherwise, except to the extent required by applicable law. The Company qualifies all of its forward-looking statements by these cautionary statements.

Qualified/Competent Person: Mr. Michael Hudson, President, CEO and Managing Director of SXGC, a Qualified Person as defined by National Instrument 43-101, and Competent Person as defined by JORC, and a Fellow in good standing with the Australasian Institute of Mining and Metallurgy, has reviewed, verified and approved the technical information in this Presentation.

Important Information

Summary information: This Presentation contains summary information about the current and proposed activities of SXGC as at the date of this Presentation. The information in this Presentation is of a general nature and does not purport to be complete. This Presentation does not purport to contain all the information that an investor should consider when making an investment decision nor does it contain all the information which would be required in a disclosure document or prospectus prepared in accordance with the requirements of the Corporations Act. It should be read in conjunction with the Company's other periodic and continuous disclosure announcements lodged with the ASX, which are available at the ASX website www.asx.com.au under the code "SX2". Neither SXGC nor its directors, employees or advisers accept any responsibility to inform recipients specifically of any matter arising or coming to its attention after the date of this Presentation. Recipients should monitor SXGC's announcements to ASX, which can be obtained from ASX website as referred to above.

Investment risk: An investment in SXGC's securities is subject to investment risks and other known and unknown risks, some of which are beyond the control of the Company. SXGC, its directors, employees or advisers do not guarantee any particular rate of return or the performance of SXGC, nor does it guarantee the repayment of capital or investments from or in SXGC or any particular tax treatment.

No Offer: This Presentation is for information purposes only. It is not a prospectus, disclosure document, product disclosure statement or other offering document under Australian or Canadian law or any other law (and is not approved by or registered with any regulator). This Presentation is not and should not be considered an offer or an invitation to acquire shares or any other securities or financial products. This Presentation may not be released or distributed in the United States. This Presentation does not constitute an offer to sell, or a solicitation of an offer to buy, securities in the United States or in any other jurisdiction in which such an offer would be illegal. SXGC securities have not been, and will not be, registered under the U.S. Securities Act of 1933, as amended (the "U.S. Securities Act") or the securities laws of any state or other jurisdiction of the United States. The distribution of this Presentation in other jurisdictions outside Australia or Canada may also be restricted by law and any such restrictions should be observed. Any failure to comply with such restrictions may constitute a violation of applicable securities laws.

Not financial product advice: This Presentation does not constitute financial product or investment advice (nor tax, accounting or legal advice) nor is it a recommendation to acquire shares and does not and will not form any part of any contract for the acquisition of shares. This Presentation has been prepared without taking into account the objectives, financial situation or needs of any particular investor.

Before making an investment decision, prospective investors should consider the appropriateness of the information having regard to their own objectives, financial situation and needs and seek appropriate advice, including financial, legal and taxation advice appropriate to their jurisdiction. SXGC is not licensed to provide financial product advice in respect of SXGC securities or any other investment.

Important Information

For the purposes of JORC, certain information in this Presentation that relates to exploration results is extracted from the Independent Geologist's Report dated December 11, 2024, which was issued with the consent of the Competent Person, Mr. Steven Tambanis. The Technical Report is included the Company's prospectus dated December 11, 2024, which was lodge with the Australian Securities and Investments Commission (ASIC) on December 11, 2024, for the purpose of compliance with ASX Listing Rules, as part of the Company's application for admission to the Official List. The Technical Report is available for download at www2.asx.com.au under code "SX2". The Company confirms that it is not aware of any new information or data that materially affects the information related to exploration results included in the prospectus. The Company confirms that the form and context of the Competent Persons' findings in relation to the report have not been materially modified from the prospectus filing.

For the purposes of NI 43-101, certain information in this Presentation that relates to exploration results is extracted from the independent technical report titled NI 43-101 Technical Report, Sunday Creek Gold-Antimony Project, Victoria, Australia" and dated September 25, 2024 (the "Technical Report") prepared for the Company by Mark Saxon, a qualified person under NI 43-101. The Technical Report is available for download under the Company's profile on www.sedarplus.ca and on the Company's website at www.southerncrossgold.com

Information in this Presentation relates to the Exploration Target for the Sunday Creek Project is based on information compiled by Mr Kenneth Bush and Mr Michael Hudson. Mr Bush is a Member of Australian Institute of Geoscientists and Mr Hudson is a Fellow of The Australasian Institute of Mining and Metallurgy. Mr Bush and Mr Hudson each have sufficient experience relevant to the style of mineralization and type of deposit under consideration, and to the activities undertaken, to qualify as a Competent Person as defined in the 2012 Edition of the Joint Ore Reserves Committee (JORC) Australasian Code for Reporting of Exploration Results, Mineral Resources and Ore Reserves. Mr Bush is Exploration Manager and Mr Hudson is Managing Director of Southern Cross Gold Limited and both consent to the inclusion in the report of the matters based on their information in the form and context in which it appears. For further exploration target information see historic SXG News Release Dated 23/01/24: <https://www.southerncrossgold.com/investor/historical-announcements-asx-sxg>. The Company confirms that it is not aware of any new information or data that materially affects the information included in the original document/announcement and the Company confirms that the form and context in which the Competent Person's findings are presented have not materially modified from the original market announcement.

Certain information in this Presentation also relates to prior exploration results reported by Southern Cross Gold Ltd, are extracted from the following announcements, which are available to view on www.southerncrossgold.com under historical announcements:

4 October, 2022 [SDDSC046](#), 20 October, 2022 [SDDSC049](#), 5 September, 2023 [SDDSC077B](#), 12 October, 2023 [SDDL003 & 4](#), 23 October, 2023 [SDDSC082](#), 9 November, 2023 [SDDSC091](#), 14 December, 2023 [SDDSC092](#), 5 March, 2024 [SDDSC107](#), 27 May, 2024 [SDDSC117](#), 13 June, 2024 [SDDSC118](#), 28 October, 2024 [SDDSC137W2](#), 10 December, 2024 [SDDSC145](#), 18 December, 2024 [SDDSC129 & 144](#)

Au Equivalent Calculation

SXGC considers that both gold and antimony that are included in the gold equivalent calculation ("AuEq") have reasonable potential to be recovered at Sunday Creek, given current geochemical understanding, historic production statistics and geologically analogous mining operations. Historically, ore from Sunday Creek was treated onsite or shipped to the Costerfield mine, located 54 km to the northwest of the project, for processing during WW1. SXGC considers that it is appropriate to adopt the same gold equivalent variables as Mandalay Resources Ltd in its Mandalay Technical Report, 2024 dated 28 March 2024. The gold equivalence formula used by Mandalay Resources was calculated using Costerfield's 2023 production costs, using a gold price of US\$1,900 per ounce, an antimony price of US\$12,000 per tonne and 2023 total year metal recoveries of 94% for gold and 89% for antimony, and is as follows: $AuEq = Au (g/t) + 1.88 \times Sb (\%)$.

Based on the latest Costerfield calculation and given the similar geological styles and historic toll treatment of Sunday Creek mineralization at Costerfield, SXGC considers that a $AuEq = Au (g/t) + 1.88 \times Sb (\%)$ is appropriate to use for the initial exploration targeting of gold-antimony mineralization at Sunday Creek.

Aim to Create the Highest Margin Gold Business Globally



Exceptional Hit Rate

Sunday Creek compares favorably with global leading hit rates for this stage of the project's development

56 individual intersections
 >100 AuEq g/t x m

157 drill holes for 71.4 km
drilling reported to date

70 vein sets wireframed
within main drill area



3 Clear Objectives

Drilling plan has three clear objectives that will have the largest emphasis

- 1 Demonstrate **Grade**
- 2 Demonstrate **Volume**
- 3 Demonstrate **Scale**



6 diamond drill rigs operating at site

Aim to increase capacity with additional rig per quarter, **60 km drilling planned to Q3 2025**



News flow continuous



Funded with permits

A\$18 m cash

1,055 ha freehold, 4 house blocks

100% owned projects, no commercial royalties



Corporate Structure



Capitalization Summary

Share Price	C\$3.59/A\$3.67
TSXV: SXGC, ASX: SX2 - 19 FEB 2024	
Shares Issued	221.6M
Fully Diluted	238.0M
Basic Market Capitalization	C\$795.7M
Cash	A\$18M



Other Data

Options	Price	No. of Securities
JLM Options (Expiry 16 May 2025)	A\$0.30	1.96M
Class A ESOP (Expiry 16 May 2025)	A\$0.30	1.00M
Class B ESOP (Expiry 16 May 2026)	A\$0.30	2.45M
Class C ESOP (Expiry 16 May 2027)	A\$0.30	2.45M
Unlisted ESOP (Expiry 15 August 2026)	A\$0.66	1.25M
Broker Options (Expiry 28 November 2025)	A\$0.87	1.03M
Consultant Options (Expiry 23 October 2026)	A\$1.20	1.50M
Director Options (Expiry 7 November 2026)	A\$1.20	3.55M
Broker Options (Expiry 10 February 2026)	C\$0.76	0.82M
Performance Rights (3-5 years)		0.28M



Major Shareholder Summary

HNW (Springtide Capital, Firelight Investments, Kiril Sokoloff, Swiss private bank clients, others)	31.2%
Institutions (Franklin Templeton, Konwave, Ruffer, Merk, Earthlabs, SG Hiscock, Pental, CQS, Schroders, Mackenzie, Incrementum, Firetrail, US Global, Earth Resource, Serafin, Kaplan, Wincrest)	23.7%
Board and Management	3.0% (8.6% FD)
Other	42.1%
TOTAL	100.0%



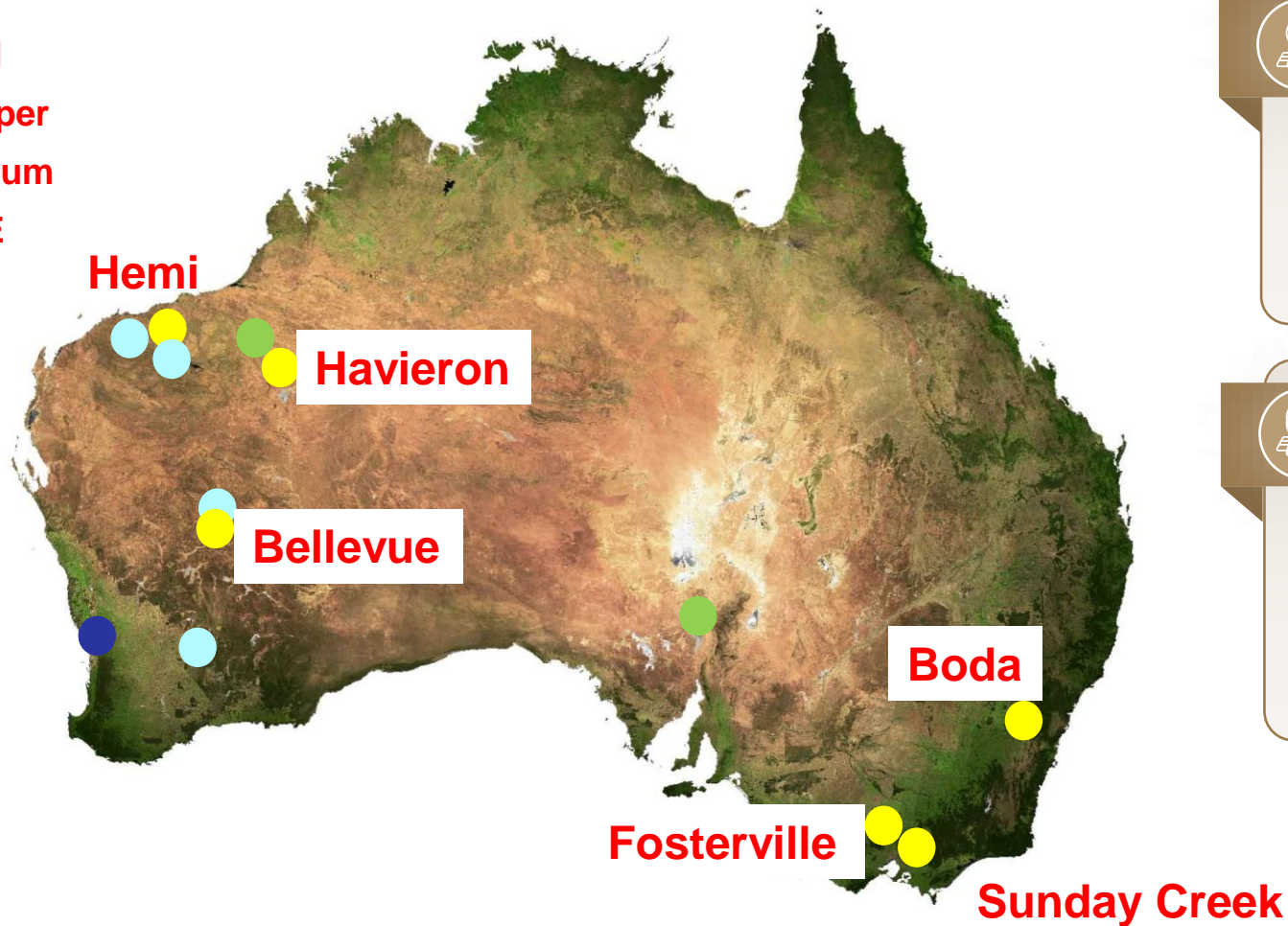
Share Price Performance – 1 Year and Coverage



Tier 1 Location

Last Decade: 12 Key Discoveries

- Gold
- Copper
- Lithium
- PGE



Sunday Creek project is one of the very few GLOBAL independently owned large and high margin gold greenfield projects that is growing quickly



MinEx Consult: Twelve Tier 1 & 2 were made in Australia between 2014-2023

Database Analysis: Grade vs Width

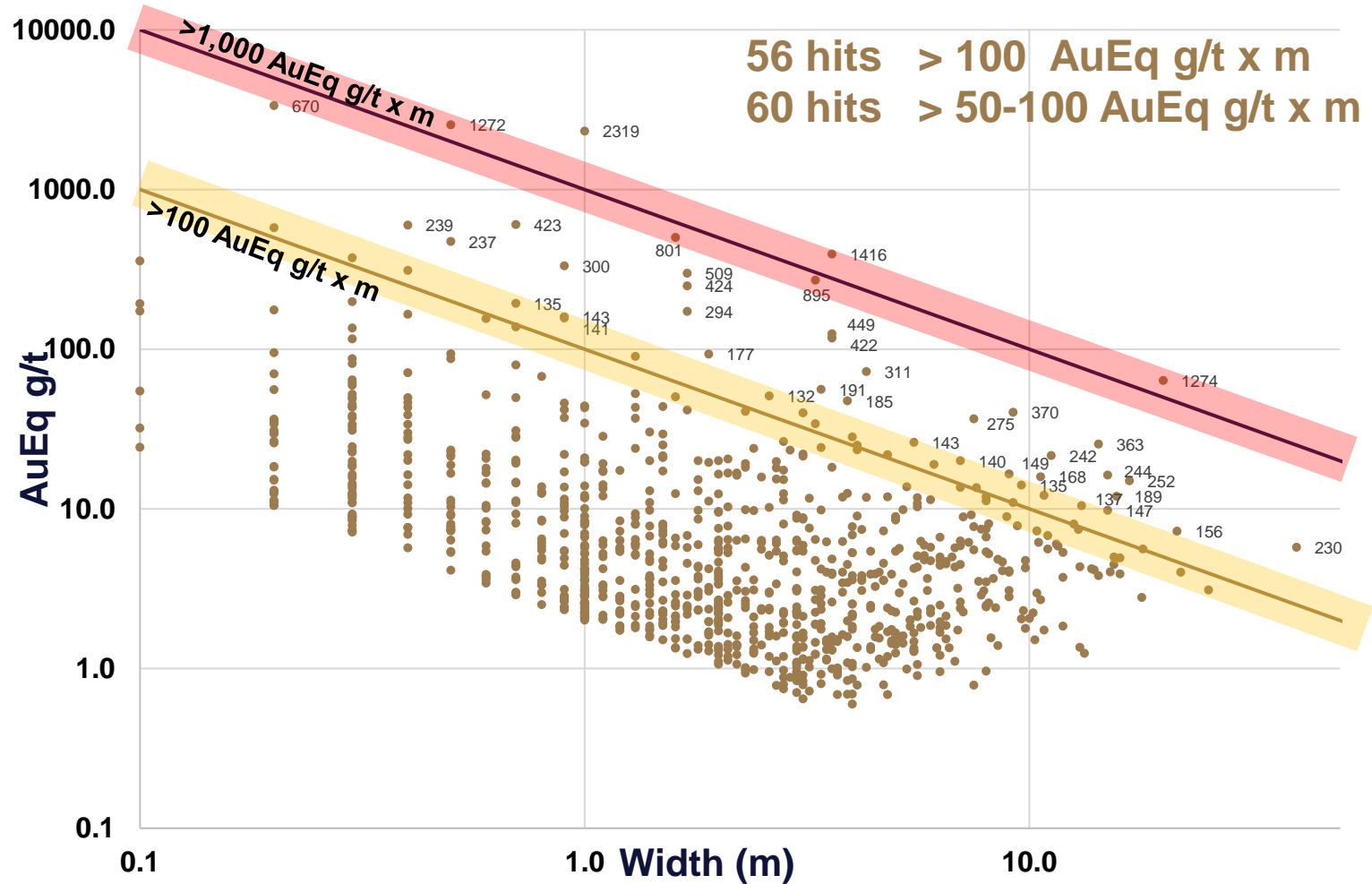
Top 10 intersections at Sunday Creek

Hole-ID	From (m)	To (m)	Length (m)	Au g/t	Sb%	AuEq g/t	AuEqgtm
SDDSC107	684.3	685.3	1.0	2318.4	0.3	2318.9	2319
SDDSC077B	737.1	740.7	3.6	391.9	0.8	393.4	1416
SDDSC091	430.0	450.0	20.0	62.7	0.5	63.7	1274
SDDSC145	876.4	876.9	0.5	2541.9	1.1	2544.0	1272
SDDSC092	681.6	684.9	3.3	267.8	1.8	271.1	895
SDDSC082	417.4	419.0	1.6	500.3	0.1	500.5	801
SDDSC144	776.6	776.8	0.2	3330.0	11.7	3352.0	670
SDDSC137W2	208.2	209.9	1.7	296.2	1.7	299.4	509
SDDSC118	1120.4	1124.0	3.6	124.8	0.0	124.8	449
SDDSC082	413.6	415.3	1.7	230.6	9.9	249.1	424

* AuEq = Au + (Sb % x 1.88), AuEqgtm variations due to rounding



SDDSC107 from 684.7 m within assayed interval 1.0 m @ 2319 g/t AuEq (2318.4 g/t Au, 0.3 % Sb)



Exploration and Mining History



History

- 1850s - Alluvial mining
- 1860s - Surface mining to 30m
- 1880s - Shaft mining to 100m, 1890s to 180m
- Early 1900s – cyanide
- WW1 – Open by Imperial munitions act - antimony
- 1960s Eastern Prospectors – few drill holes
- 1980s CRA/BHP
- 1986 – mid 1990's, Ausminde - 29 RC drill holes totalling 960 metres;
- 2008 - Beadell Resources 30 RC holes with 7 diamond drill tails – oxide focus

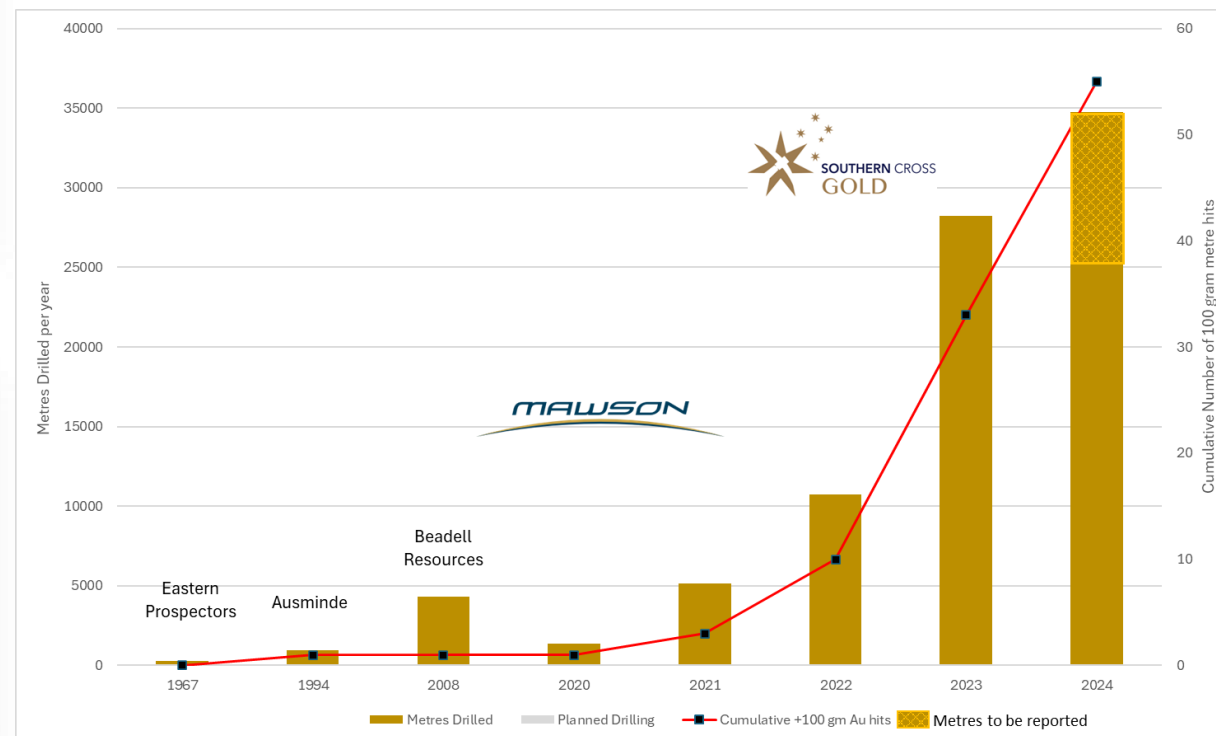


Exploration

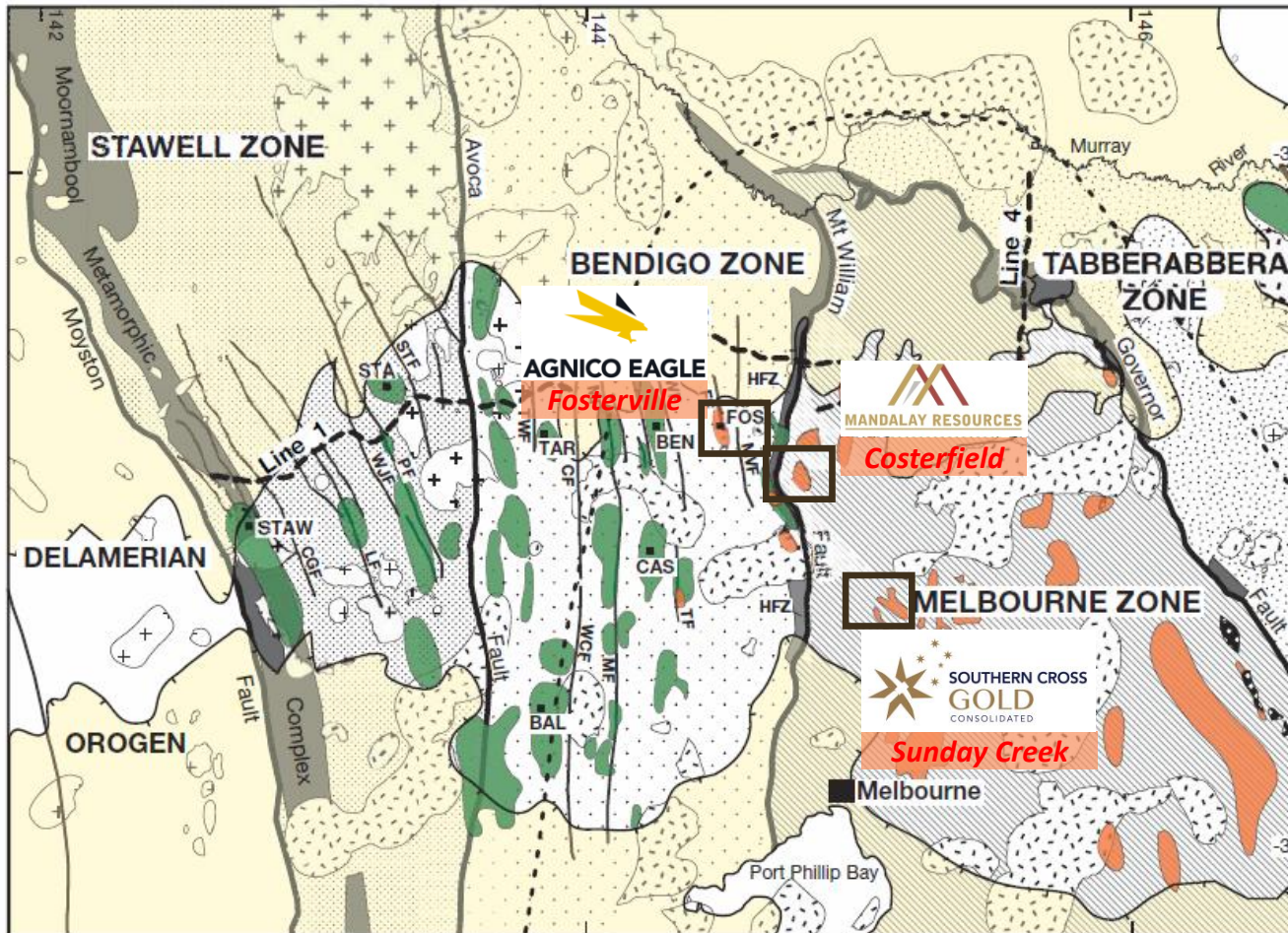
- Exploration has accelerated year-on-year
- 2021 was the first year with an individual +100 g/t Au assay interval
- 2023 included 28 individual Au assays +100 g/t Au and 6 individual Au assays +1,000 g/t Au.
- 2024 to date has 25 individual Au assays +100 g/t Au and 2 individual Au assays +1,000 g/t Au from 19 drillholes reported.



The Golden Dyke Mine



Regional Setting



Willman et al., 2010

100 km

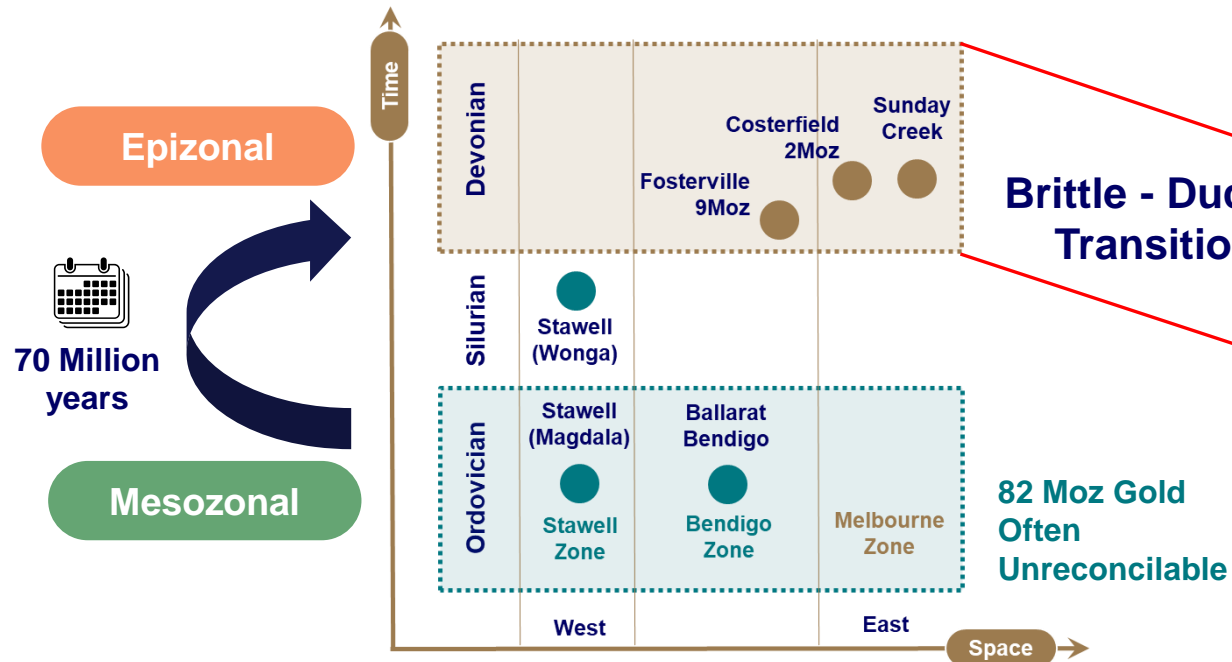
**Mesozonal
character**

**Sb-As bearing, mainly
epizonal character**

- Cenozoic cover rocks
- Late Devonian granite
- Early Devonian granite
- Ordovician to Devonian sedimentary rocks (Melbourne Zone)
- Ordovician to Silurian sedimentary rocks (Tabberabbera Zone)
- Ordovician turbidites (Bendigo Zone)
- Cambrian turbidites (Stawell Zone)
- Cambrian mafic volcanic rocks
- Cambrian calc-alkaline volcanic rocks (upper layer of Selwyn Block)
- Goldfields formed in 380 - 370 Ma event
- Goldfields formed in 440 Ma and 420 - 400 Ma events

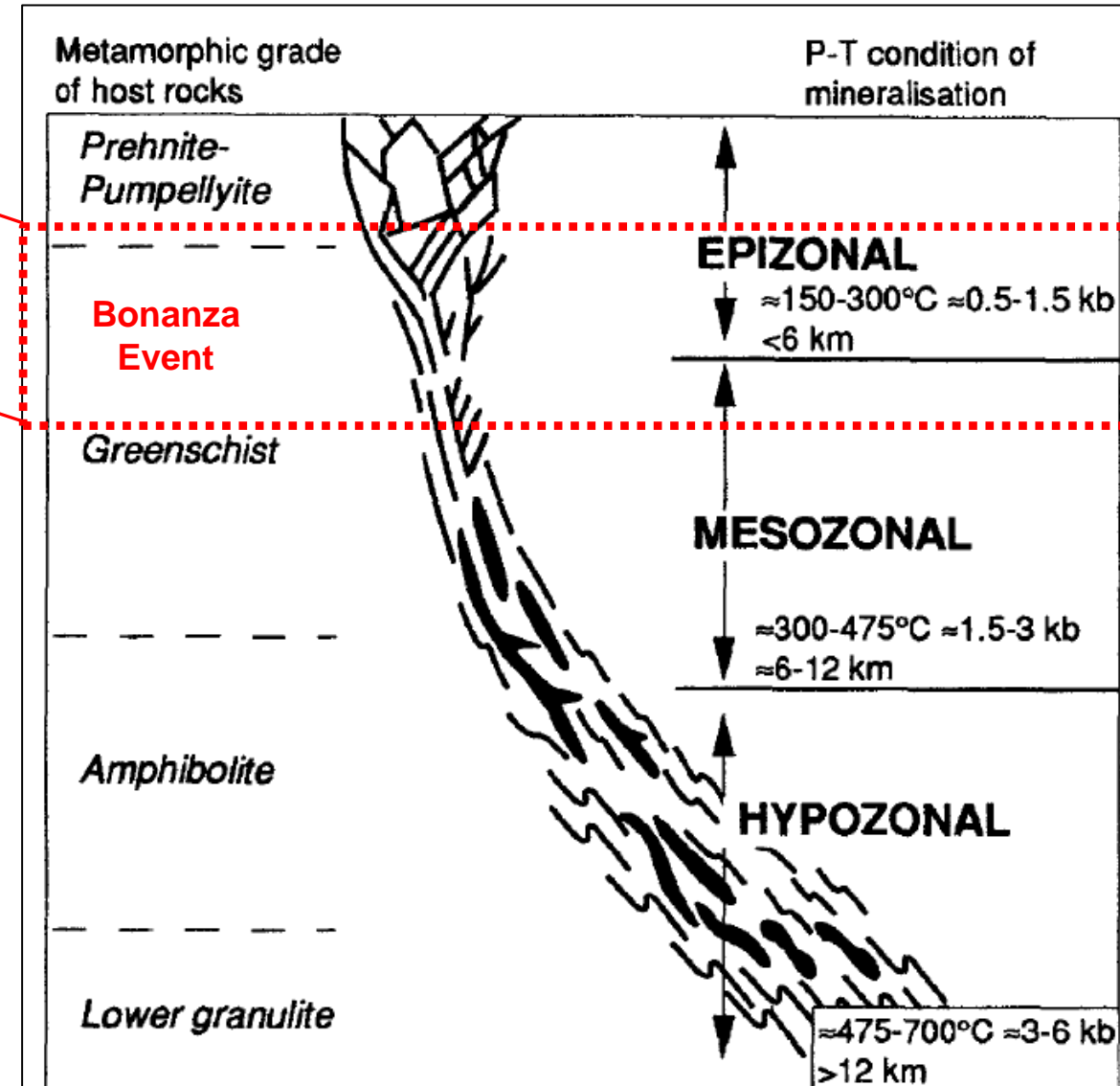


Victoria a Gift That Keeps on Giving



Drives thesis to test to depth

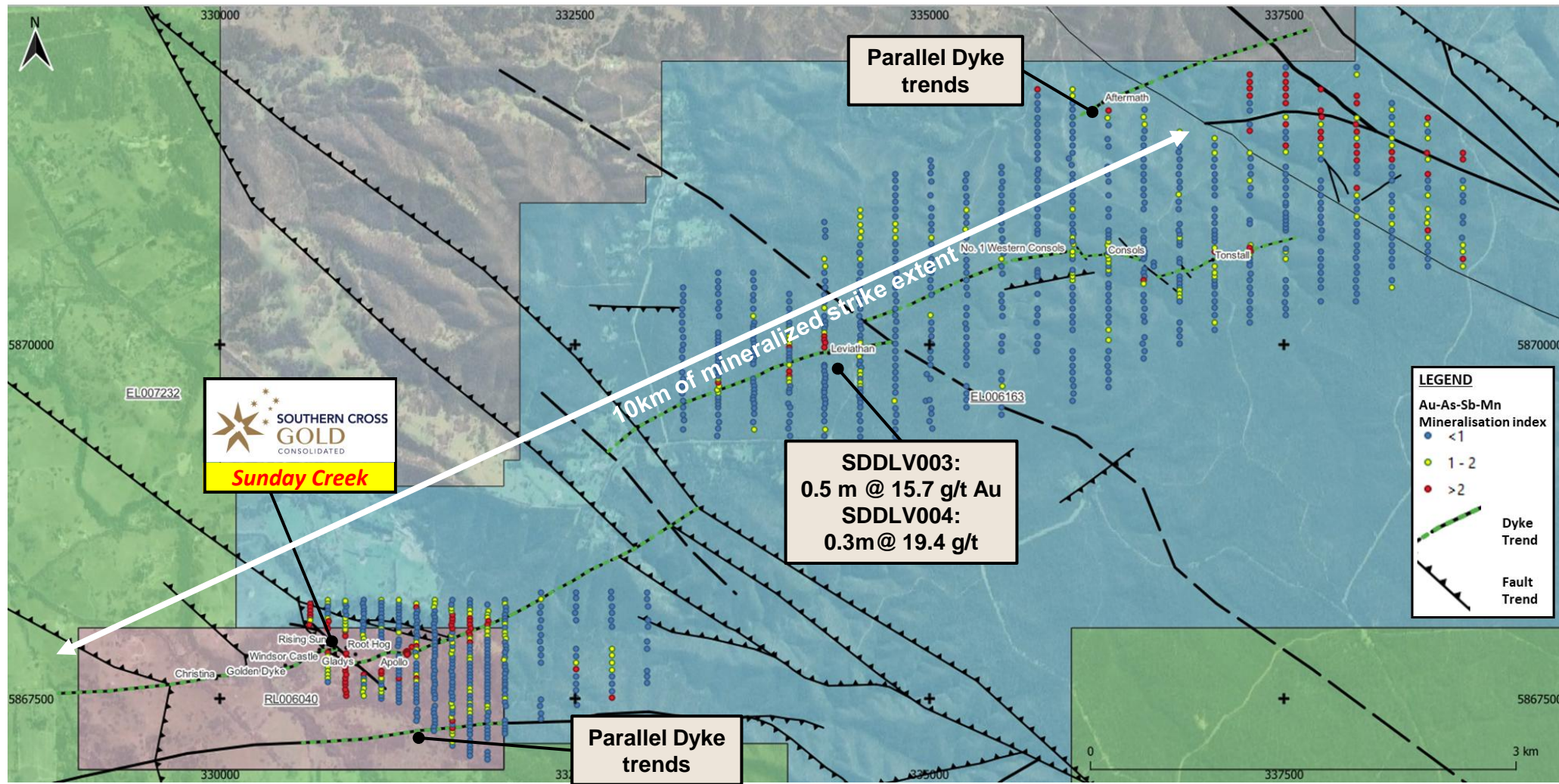
SDDSC107 from uncut core from 684.7 m within assayed interval 1.0 m @ 2319 g/t AuEq (2318.4 g/t Au, 0.3 % Sb)



Gebre-Mariam et al., 1995

Regional and Parallel Trends

- Clear geochemical anomalies can be identified from a combined trace element additive index using Au, As, Sb and Mn.
- Parallel dyke trends identified in outcrop and historic mining occurrences.



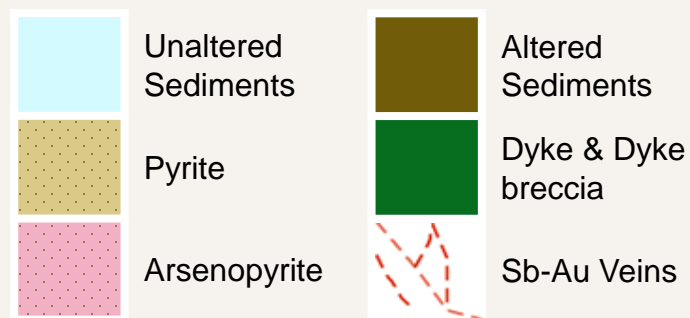
Schematic Plan View Main Drill Area – The Golden Ladder

● **Ladder rails extend over 10km** of strike.
Core area drilled over 1km

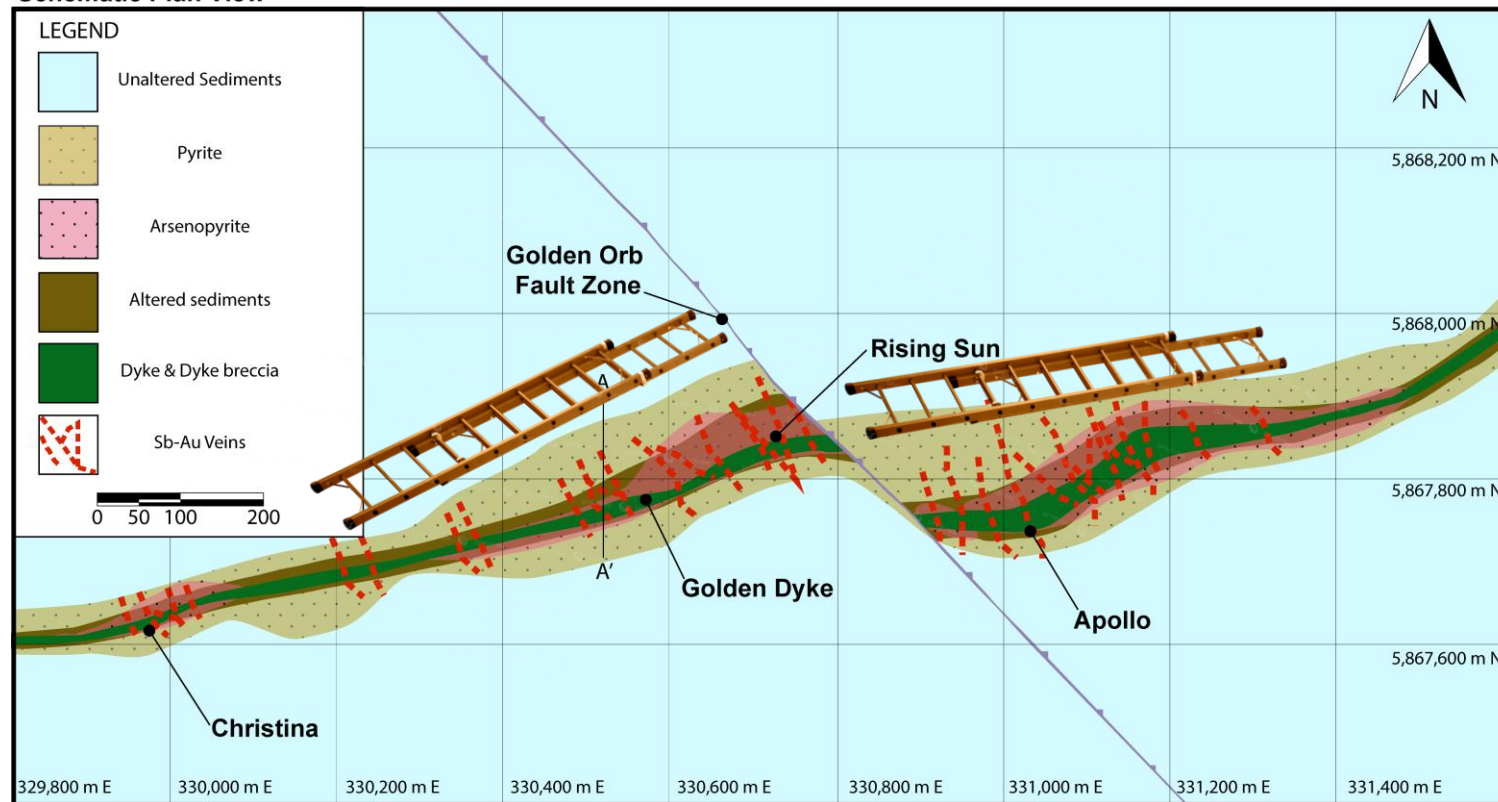
● **“Rungs” extend from surface to 1.1km depth**, Each “rung” **20-100m long**, Apollo av. width **3.8m (median 3.4m)**, Rising Sun av. width **2.7m (median 2.3m)**, max 10.9m

● **70 “rungs”** identified to date

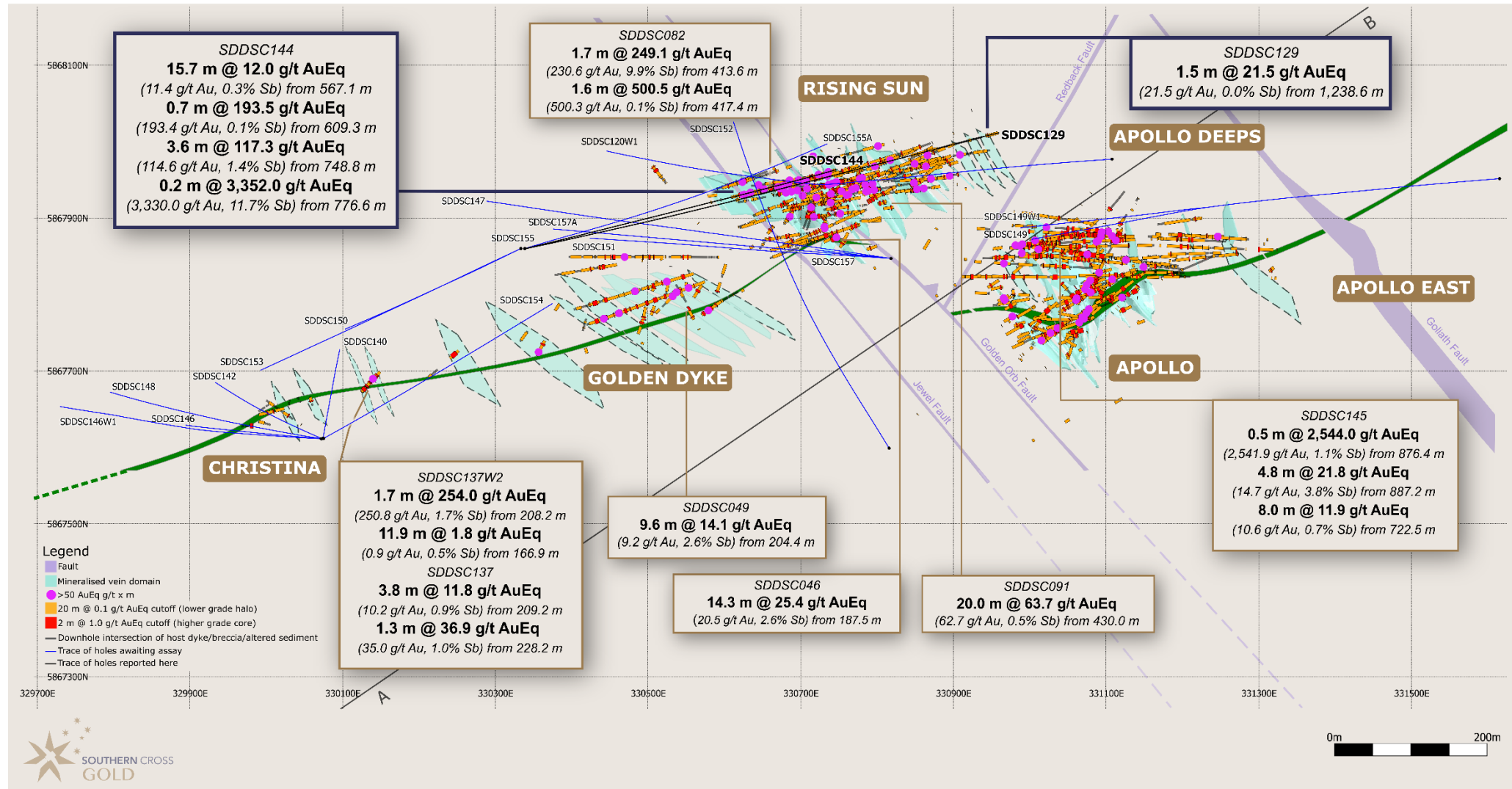
● **Continuity informed by structural data, geostats (CV<2), geological likeness, predictability and 50 yr mining**



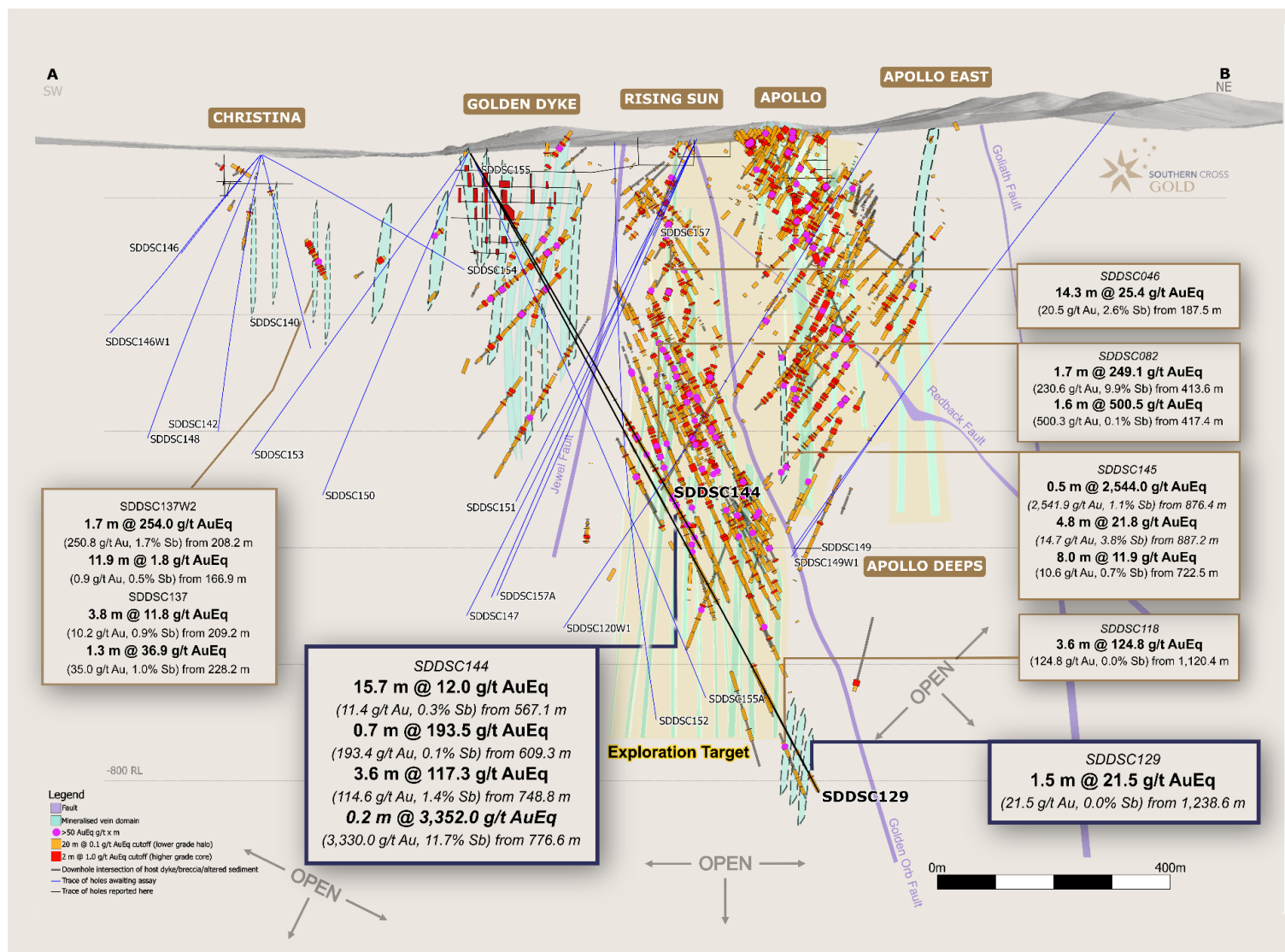
Schematic Plan View



Plan View Main Drill Area



Long Section View Main Drill Area



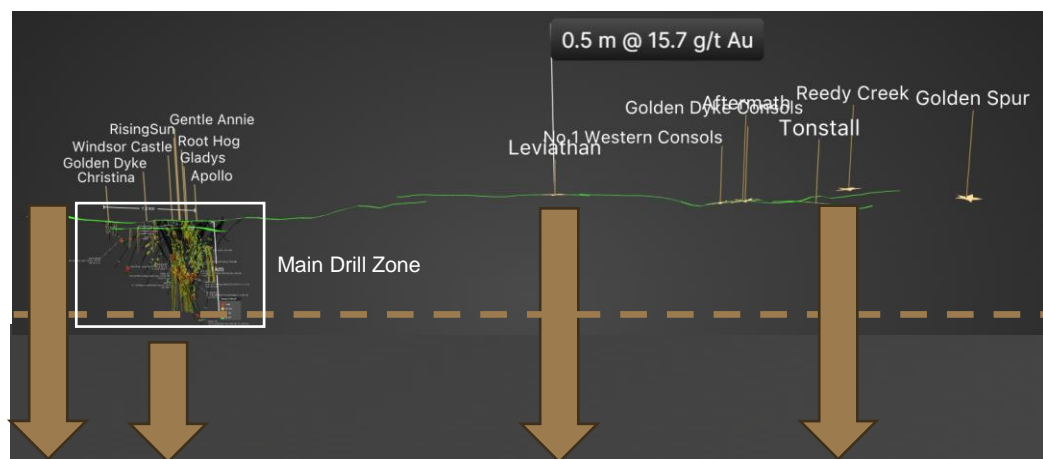
1,200 m



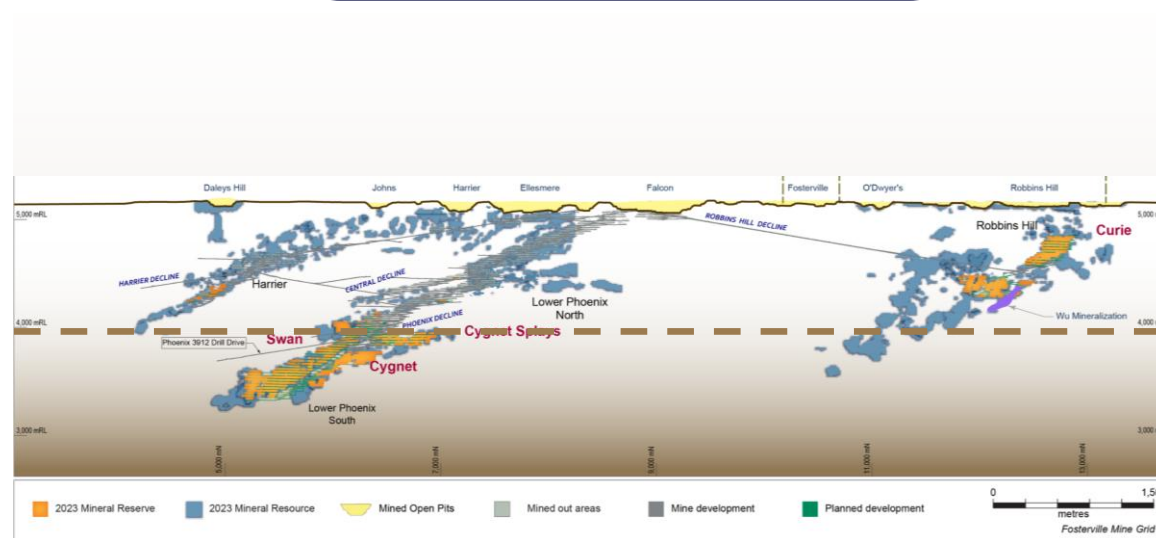
Drilling Area Outside Maiden Exp. Target

Depth: Victorian Epizonal Systems Continue to at least 2 km

Sunday Creek



Fosterville



Source: https://s21.q4cdn.com/374334112/files/doc_downloads/GeologyMaps/2024/Item-37-Fosterville-Composite-Longitudinal-Section.png

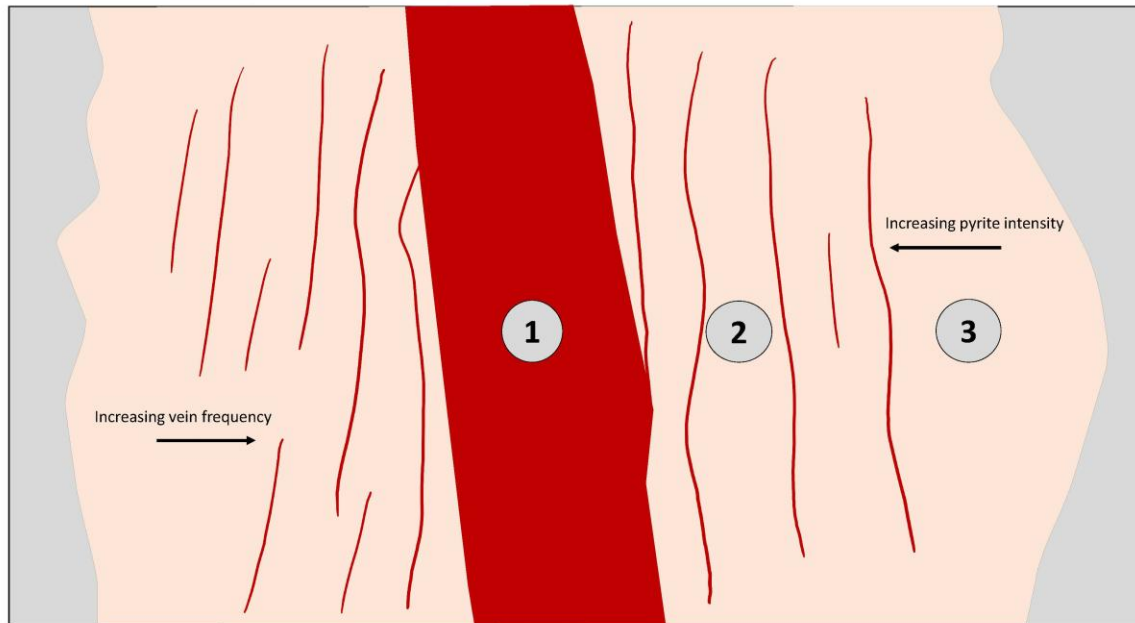
70 Vein Sets: Geological Likeness Informs Continuity

A geological understanding of mineralization at Sunday Creek



Schematic View – Looking north-west

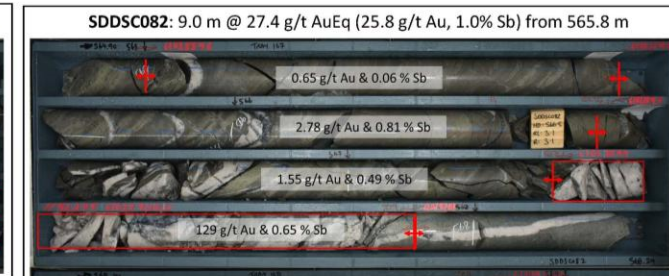
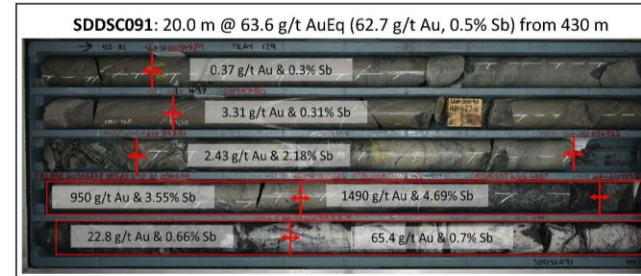
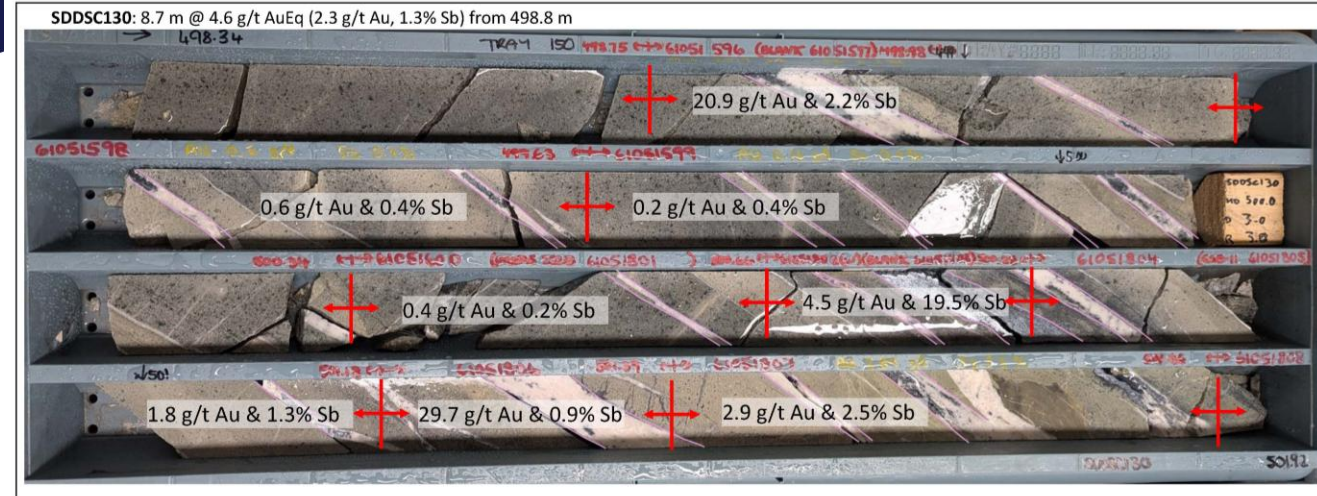
*Estimated true widths quoted



1 Shear vein – high-grade core
High-grade core: 0.1 – 1.5m Wide,
Average Grade +20 g/t Au & +5 % Sb

2 Vein arrays – extension veins
Vein array / vein set: 0.5 – 10m wide,
Average grade 1.8-12.5 g/t Au & 0.1-5.2 % Sb

3 Disseminated pyrite
Disseminated pyrite:
Increasing intensity with
proximity to intrusive body



Coefficient of Variation

Understanding grade continuity is crucial for high-grade gold deposits.

Low variability or coefficients of variations (CV, standard deviation over mean) in assay results **lowers geological risk and reduces the cost of capital** (less drilling/more confidence in model).

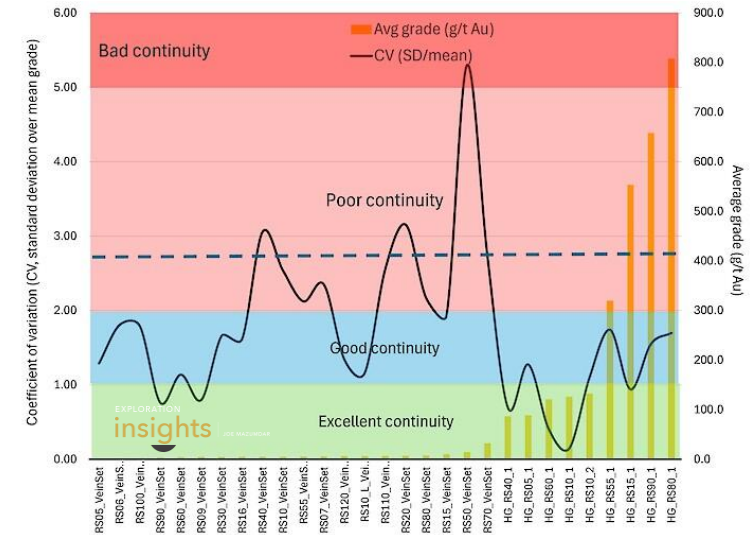
Rising Sun:

- 636 samples from 29 vein sets
- Average true thickness 2.7m, median 2.3m
- Average 25 g/t gold (up to 808 g/t gold)
- Average **CV is 2.7**

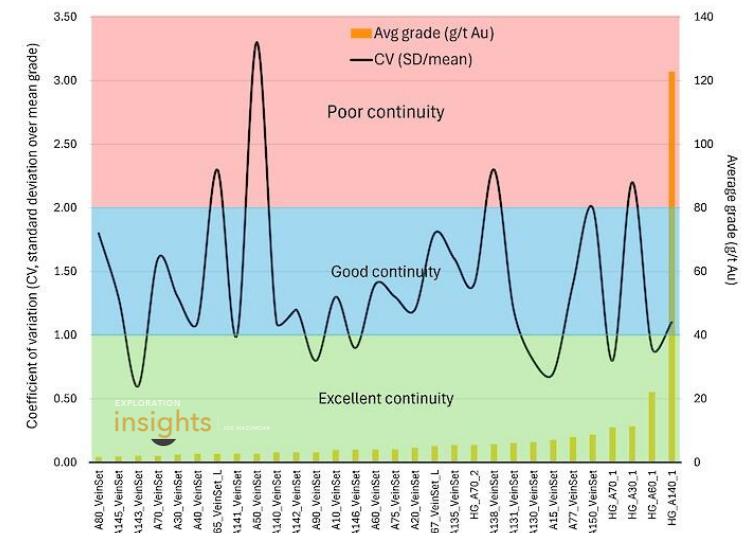
Apollo:

- 994 samples in 30 vein sets
- Average true thickness 3.8m, median 3.4m
- Average 3.8 g/t gold.
- Average **CV is 1.8**
- **More data = declining CV**

Rising Sun



Apollo



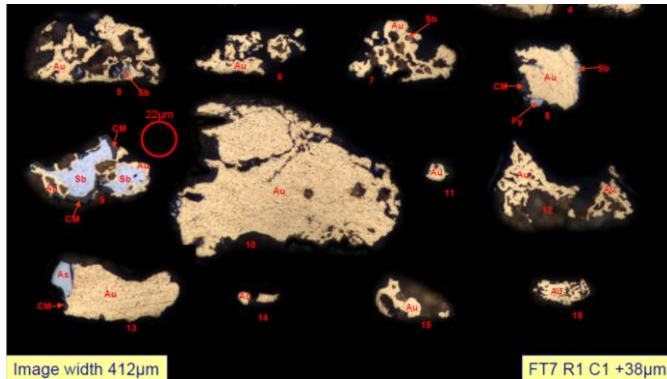
Does High-Grade Mean High Nugget? No!

1. Victorian epizonal Au-Sb is high-grade and not nuggety
= reconcilable, high-margin mines
2. Repeatable data in lab and in core (visible gold both sides of core)
= confidence
3. Understanding and constraining geology leads to low CV (<2)
= predictability and continuity



SDDSC107 from 684.7 m within assayed interval 1.0 m @ 2319 g/t AuEq (2318.4 g/t Au, 0.3 % Sb)

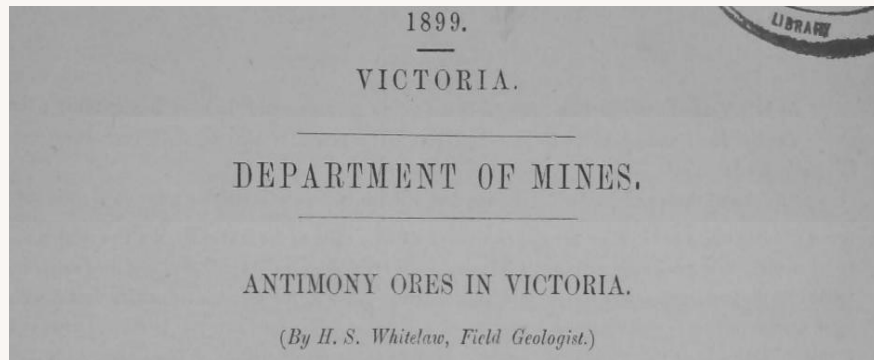
Preliminary Metallurgical Test Work



Non-refractory, simple gravity-flotation flow sheet

- Utilized Costerfield flow sheet
- Mineralogical investigations demonstrated a high proportion of non-refractory native gold (82% - 84%).
- Gravity (18-33%) with bulk flotation resulted in 93.3% - 97.6% recovery of gold.
- Flotation alone resulted in 88.9% - 95.0% recovery of gold in an antimony-gold concentrate:
 - Grading 32% - 52% Sb (87.1% - 93.8% recovery)
 - 81.4 g/t – 313.6 g/t Au (40% of feed gold) with low to moderate arsenic contents (0.4% and 2.6%)
 - Opportunities to blend or float sulphide concentrate
 - 96% - 98% of the contained gold was native gold
- Next Steps:
 - Optimize for gold into gravity and minimizing As into Sb-Au con (blending, sequential flotation)

Antimony – Yesterday's and Today's Critical Metal



Historically and economically, antimony is the second most important metallic commodity in Victoria after gold.



The Victoria gold mining industry practically closed at the onset of WW1. Except antimony, mandated by the Imperial Government under the Munitions Act, 1915 to ship concentrates to the St. Helens Smelting and Refining Company in the UK

The Critical Minerals Institute Identifies the 14 Most Elusive Critical Minerals in the World and Launches New Website

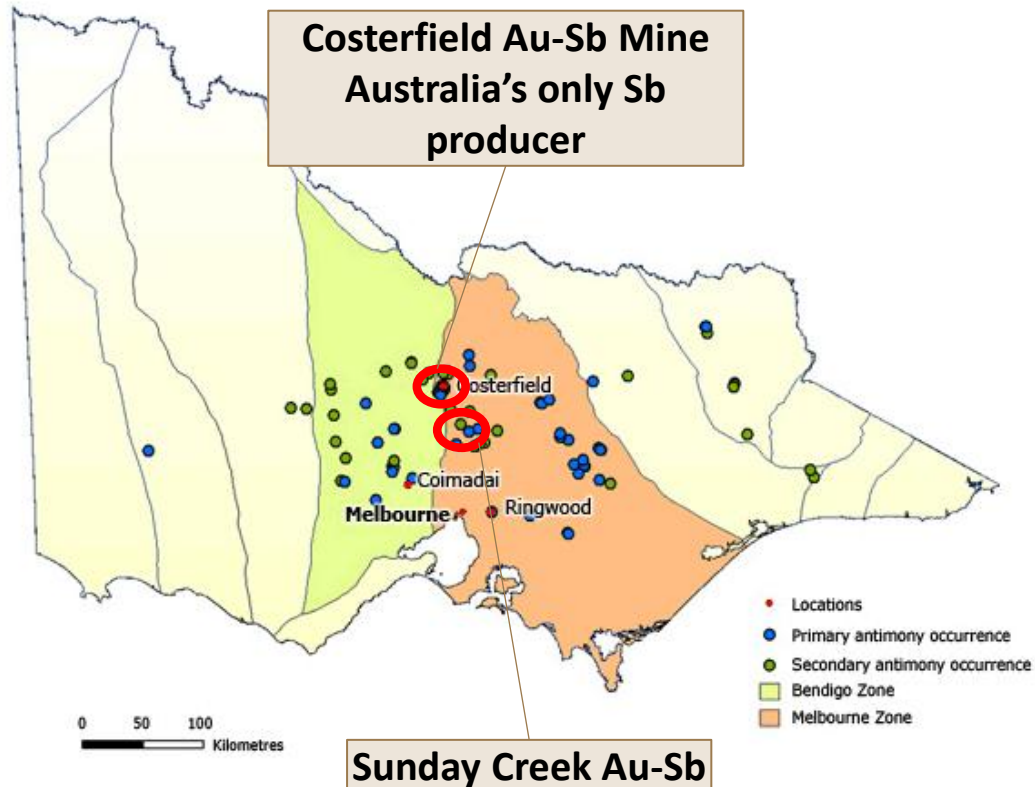
📅 January 18, 2023(<https://criticalmineralsinstitute.com/2023/01/18/>)

📰 News Releases (<https://criticalmineralsinstitute.com/category/news-releases/>)



- | | | |
|------------------|-----------------------------|--|
| 1. Antimony (sb) | 6. Indium (In) | 11. Rare Earth Elements – of 17 REEs: neodymium, praseodymium, dysprosium, Terbium |
| 2. Bismuth (Bi) | 7. Lithium (Li) | 12. Tantalum (Ta) |
| 3. Cobalt (Co) | 8. Magnesium (Mg) | 13. Tungsten (W) |
| 4. Gallium (Ga) | 9. Niobium (Nb) | 14. Vanadium (V) |
| 5. Graphite (C) | 10. Platinum group of metal | |

Antimony from Greek “anti” (not) and “monos” (alone)



- Second most important metal in Victoria
- 1870s: European wars
- WW1: Imperial Munitions Act to ship concentrates to the UK

Governments formulate lists of critical minerals according to their industrial requirements and strategic evaluations of supply risks.



Coking Coal
The European Union is a significant importer of coking coal used in steel production.

 China

China leads in mineral processing, controlling 100% of the world's refined supply of natural graphite, over 90% of manganese, 70% of cobalt, nearly 60% of lithium, and 40% of copper refining.

AL	Sb
Aluminum/	Antimony

As
Arsenic

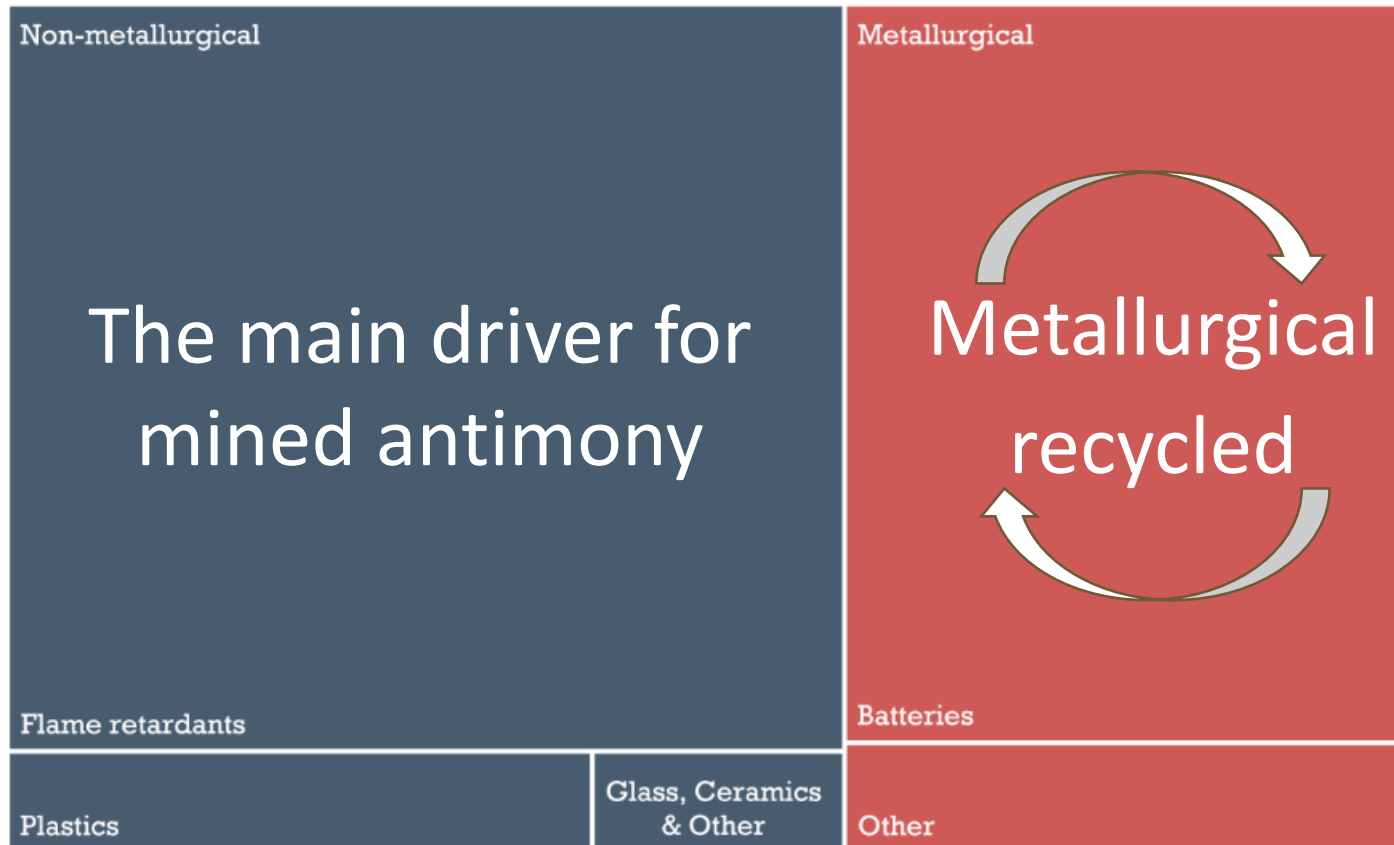


U.S.

<https://www.visualcapitalist.com/the-critical-minerals-to-china-eu-and-u-s-national-security/>

Note: Data as of September 2023

Demand



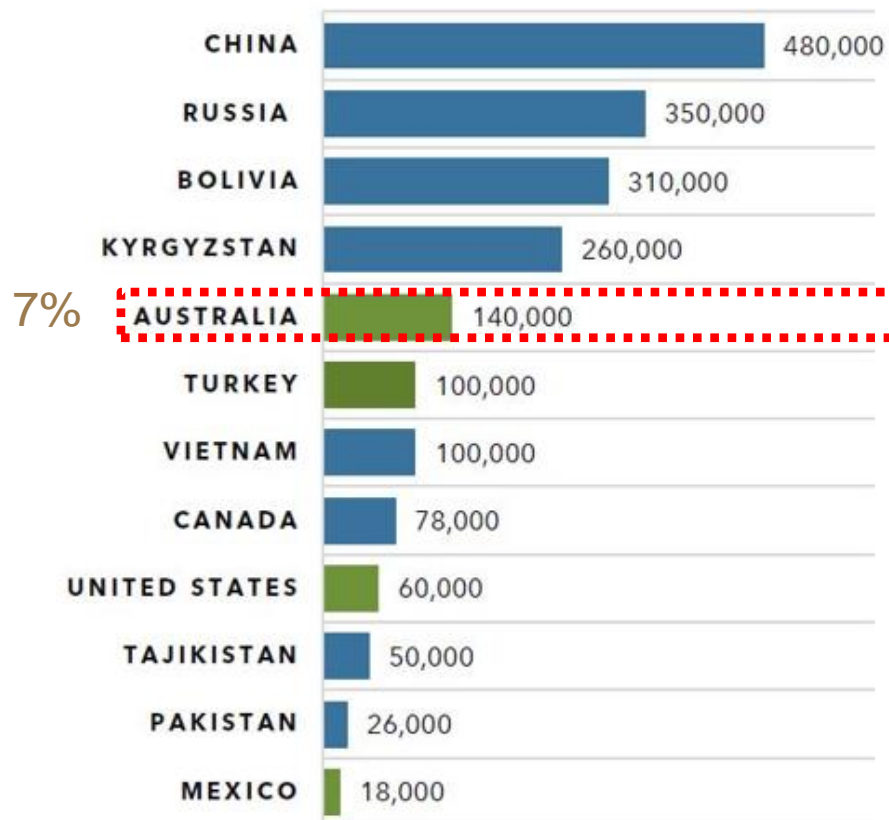
Source: Blue

Critical and Strategic

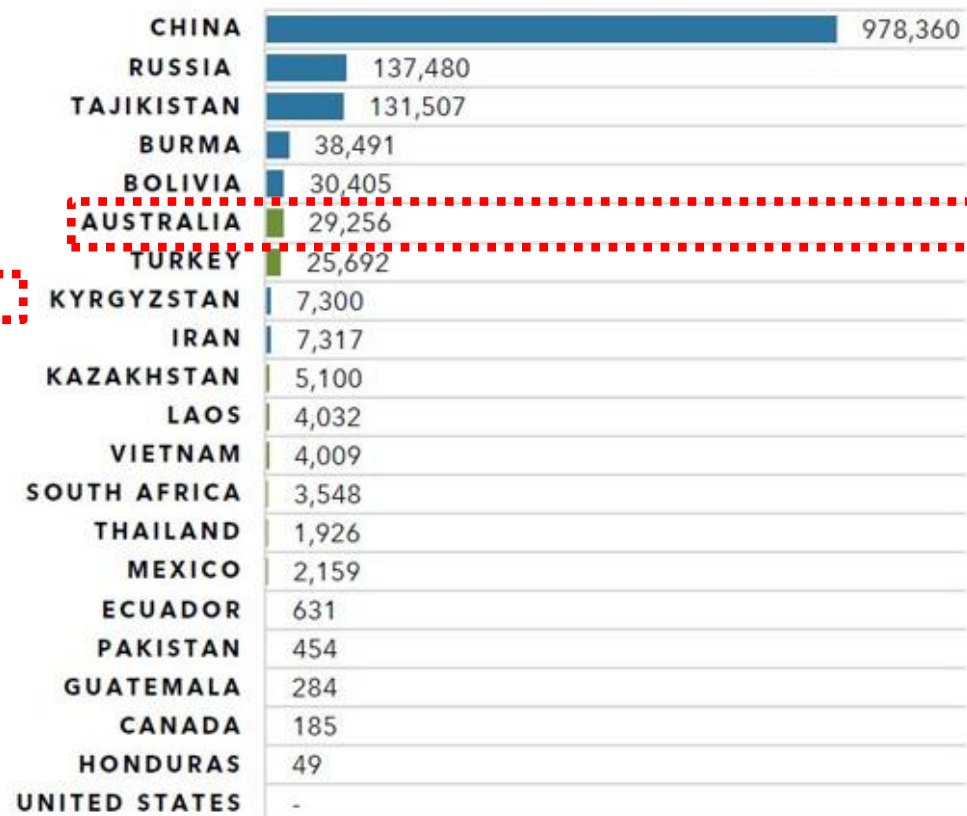
- Defence critical
- Semiconductors
- Solar panels (17% global in 2022)
- Battery metal for its role in liquid metal (Sb-Ca Ambri – Reliance/Gates)

Supply (Russia + China = 82%)


REPORTED 2020 WORLD
RESERVES ANTIMONY
(METRIC TONNES)



CUMMULATIVE WORLD
PRODUCTION ANTIMONY
METRIC TONNES
(2013-2020)



AUKUS and China Export Restrictions

 Australian Government
Defence

Defence Ministers

Current Ministers Media releases Speeches Statements Transcripts Previous Ministers

← Home / Media releases / Passage of priority AUKUS submarine and export control exemption legislation by the United States Congress

Passage of priority AUKUS submarine and export control exemption legislation by the United States Congress

15 DECEMBER 2023

- **Adds Australia and the United Kingdom to Title III of the US Defense Production Act.** This Act allows the US Government to incentivise its industrial base to expand the production and supply of critical materials and goods. Australia's addition will open new opportunities for Australian based industry to directly compete for business with the US Government.

CSIS | CENTER FOR STRATEGIC & INTERNATIONAL STUDIES

Regions Topics

China's Antimony Export Restrictions: The Impact on U.S. National Security

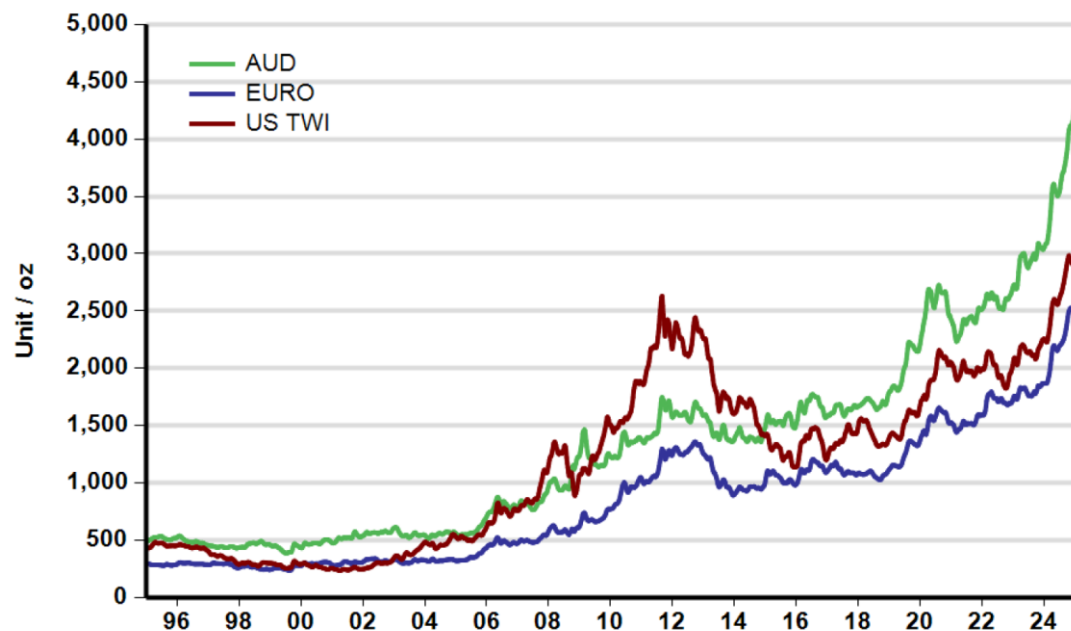


Photo: Milan via Adobe Stock

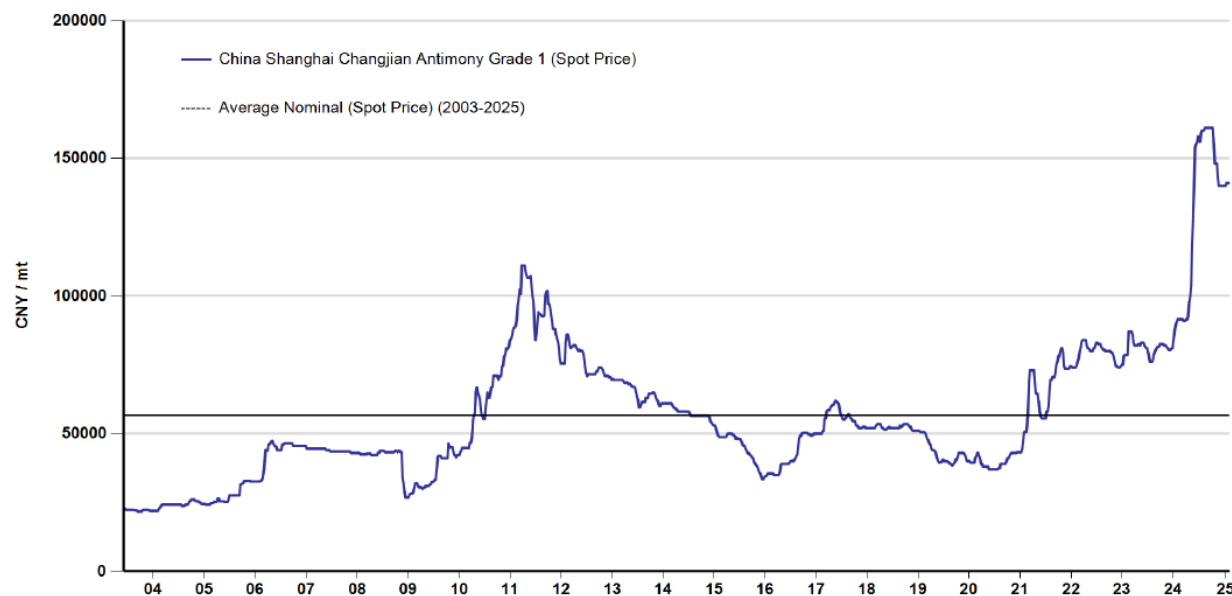
SXGC are members of Defense Industrial Base Consortium (DIBC)
<https://www.dibconsortium.org/>

Not only strategic, also valuable

Gold



Antimony



Location, Location, Location: Positioning for Development

The company is actively de-risking the project through pre-development activities to be in an optimal position for design, feasibility studies and permitting



Victoria is Open for Business

Two major Victorian mines permitted in Dec 2024

INN Investing News Network
Your trusted source for investing success

VIDEOS COMPANIES PRESS RELEASES TOP STOCKS ▾

≡ TRENDING RESOURCE TECH LIFE SCIENCE GOLD PRICE SILVER PRICE COPPER PRICE OIL

CRITICAL METALS

Victoria Improves Permitting to Back Critical Minerals Sector



Gabrielle De La Cruz | Dec. 16, 2024 09:20AM PST

Share

The Victorian government is supporting the state's growing critical minerals sector by addressing permitting delays in the mining industry.



- Critical Minerals Priority Development Zones
- *“**Victoria is open for business** – that’s why we’re unlocking industrial land, streamlining investment pathways, slashing red tape and backing new and existing industries,”* concluded Premier Jacinta Allan.
- Environmental effects statement (EES) cut assessment review to a **maximum of 18 months**.

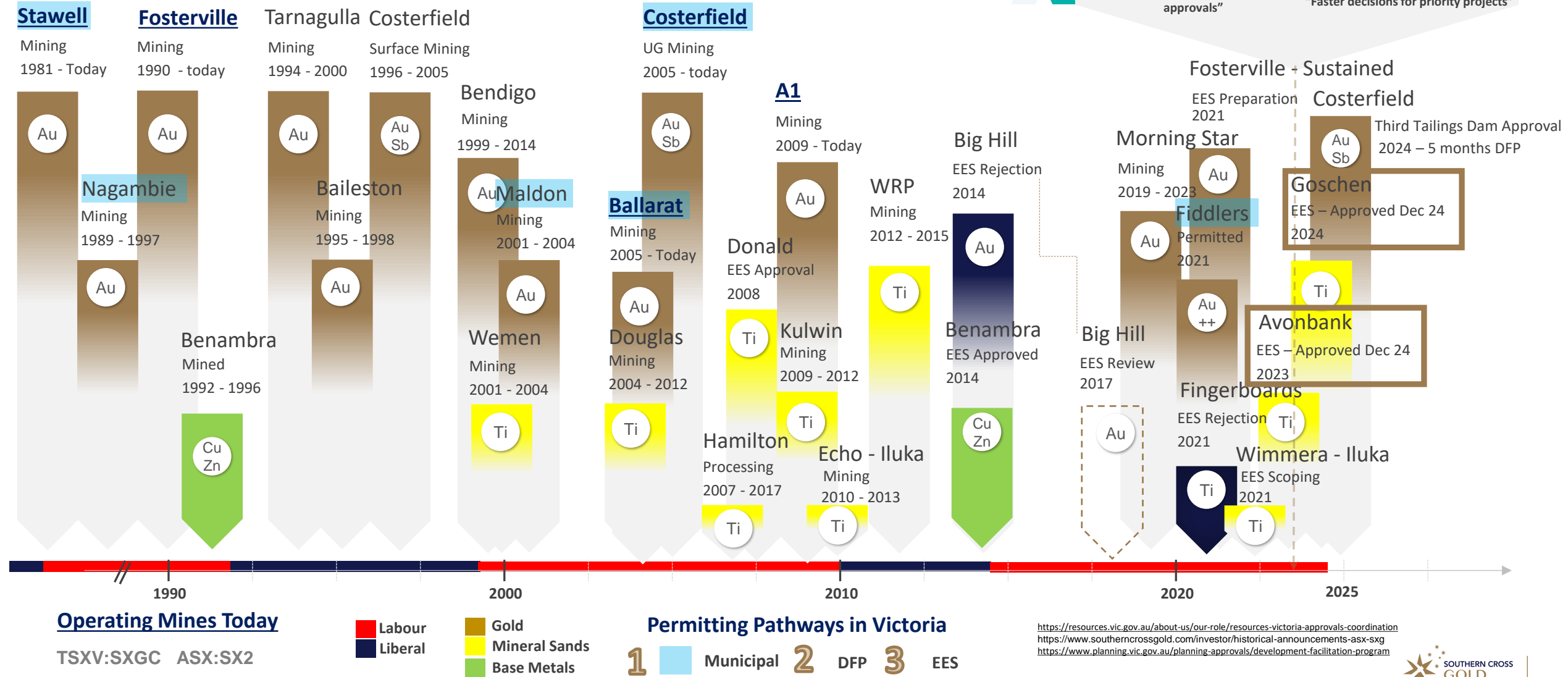
Victorian Sustained Mine Permitting and Development

5 Gold Mines Operating Today, 2 major mines approved in Dec 24

VICTORIAN GOVERNMENT INITIATIVES

Approvals Coordination
"A\$23.3m to drive investment by removing uncertainty around resource approvals"

Development Facilitation Program ("DFP")
"Faster decisions for priority projects"



<https://resources.vic.gov.au/about-us/our-role/resources-victoria-approvals-coordination>
<https://www.southerncrossgold.com/investor/historical-announcements-asx-sxg>
<https://www.planning.vic.gov.au/planning-approvals/development-facilitation-program>

Our People



Locally based staff – living in the communities in which we work



Australian based board – focused on creating an ethical, shared value company with strong ESG credentials that employees and investors can be proud of



Strong relationships: Community Reference Group, Shire, Taungurung Lands and Waters Council, State and Federal Government



Directors



Tom Eadie
**Non- Executive
Chairman**

Explorer, mining executive and company director with many significant mineral discoveries and several successful companies to his name (Pasminco, Syrah, Copper Strike)
Geologist with over 40 years' experience in the resources industry



Michael Hudson
**President & CEO,
Director**

Explorationist, entrepreneur, company director and manager, developed and financed mineral exploration properties globally over 30 years. Key member behind multiple discoveries. Co-founder and director of Hannan Metals Ltd (TSXV:HAN)



Georgina Carnegie
**Non-Executive
Director**

Experienced executive within Australian government and global corporate sectors
Advisory roles in public and private mining and insurance sectors, OECD, Asian business councils and Australian university sector



David Henstridge
**Non-Executive
Director**

Geologist with over 50 years' experience in the mining industry including 20 years in managing public-listed companies
Associated with many mineral discoveries worldwide including in Australia, Peru & Finland

Senior Management

**Lisa Gibbons****General Manager**

30+ years' experience as a geologist in exploration & resource development. Won the MCA Victoria 2022 Exceptional Woman in Victorian Resources Award for her career achievements, advocacy of women and contribution to social licence and the community.

**Nicholas Mead****Corporate Development Manager**

Over 25 years experience in business development and investor relations primarily in the global mining investment sector. He has focussed on capital raising in both private equity and public markets and developing and maintaining relations with investors, consultants and stakeholders.

**Kenny Bush****Exploration Manager**

Experienced exploration and mine geologist specialising in 3D geological and structural modelling. He has worked extensively in Victoria on some of the highest-grade gold mines in the world including Costerfield and Fosterville and has provided detailed exploration and geological models for many Victorian exploration and mining companies.

**Nick Demare****Chief Financial Officer**

Chartered Professional Accountant providing accounting, management, securities regulatory compliance and corporate secretarial services to private and public-listed companies since 1991. He holds a Bachelor of Commerce degree from the University of British Columbia and is a member in good standing of the Institute of Chartered Accountants of British Columbia.

**Mariana Bermudez****Corporate Secretary, Canada**

Over 20 years as a corporate secretary, primarily in junior mining companies. She has extensive experience in providing corporate secretarial, governance, compliance, and disclosure consulting services to various Canadian public-listed issuers on Toronto Stock Exchange, TSX Venture Exchange, OTC Markets, NYSE-MKT and Nasdaq First North.

**Justin Mouchacca**
Company Secretary, Australia

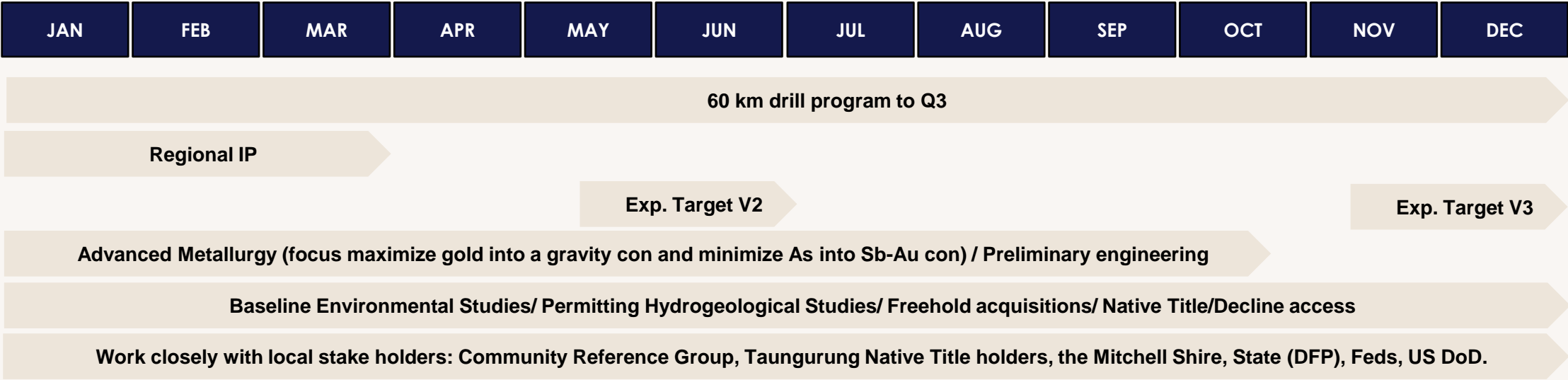
15 years' experience in public company responsibilities including statutory, corporate governance and financial reporting requirements. He is a Chartered Accountant and has been appointed Company Secretary and Financial Officer for a number of entities listed on the ASX and unlisted public companies.

Key Catalysts Next Quarter

- **An exploration target upgrade early March 2025.**
- **Expanding the core resource area while conducting monthly internal modelling updates with SRK Consulting to maintain a detailed understanding of the evolving system**
- **Testing regional targets along the 12 km strike length through mapping, geophysics, soil sampling, and one drill rig dedicated to testing these targets.**
- **Stage 2 metallurgical studies are underway and will be reported over the coming quarter.**
- **Five rigs are operational, with a 6th rig at site that will commence drilling shortly with one rig focussed on regional targets. Two further rigs are being sourced to focus on resource drill out.**
- **Permitting permissions and studies: working closely with the State of Victoria undertaking engineering and environmental studies, including the recent completion of seven water monitoring bores, taking the total to nine on the project, critical for hydrogeological studies.**

Timetable Next Steps

2025



Aim to update the Exploration Target by July 2025

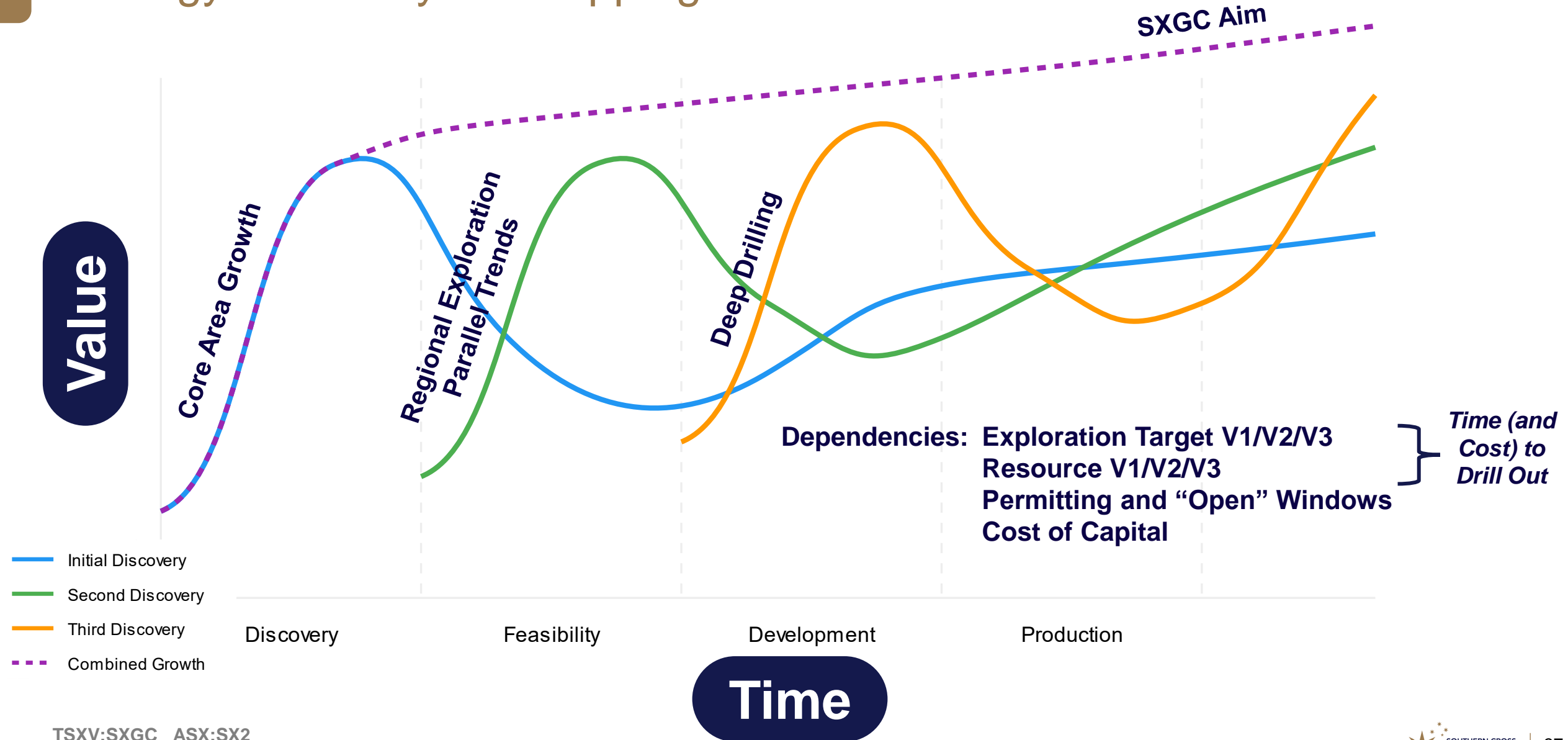


12 km of strike with old workings, early-stage drill hits and soil sampling.
Regional scale geophysical survey over this trend. One rig to focus on regional drilling.



60 km to Q3 2025

Strategy Driven By Overlapping Lassoonde Curves



Progress



Highest hit rate globally, grade increasing at depth:

- 56 intersections > 100 AuEq g/t x m from 71.4 km drilling
- 455.3 m @ 7.2 g/t Au including 1.0 m @ 2,318 g/t Au
- 331.5 m @ 6.8 g/t Au including 13.1 m @ 91.7 g/t Au



Free milling gold, 20% antimony by-product (defence critical)



Large exploration upside, only 3% of trend tested



157 drill holes for 71.4 km reported to date, 60 km drill program to Q3 2025



Seasoned discovery team focussed on value creation per share



Supportive shareholders to underpin value creation lifecycle
Cash A\$18m, 1,055 ha freehold



Contact Us



info@southerncrossgold.com



www.southerncrossgold.com



Corporate Secretary

Mariana Bermudez
mbermudez@chasemgt.com
+1 604 685 9316

Corporate Development

Nicholas Mead
nm@southerncrossgold.com
+61 415 153 122

Registered Office

1305 1090 West Georgia St
Vancouver V6E3V7 BC
Canada

Subsidiary Office

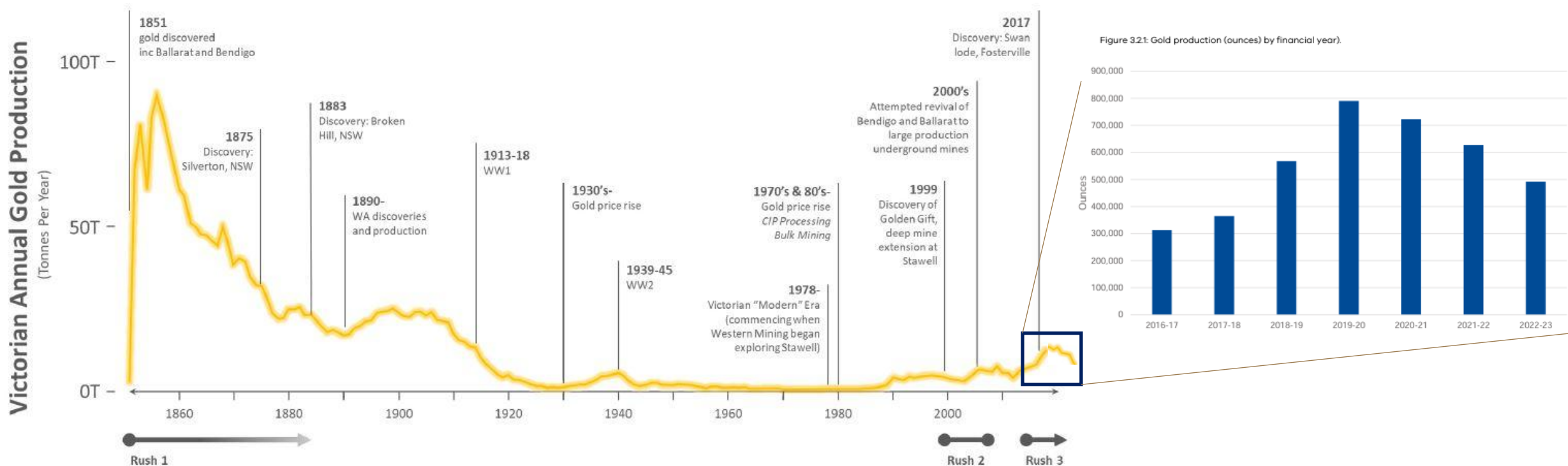
Level 21
459 Collins St
Melbourne 3000 Victoria
Australia



Appendices

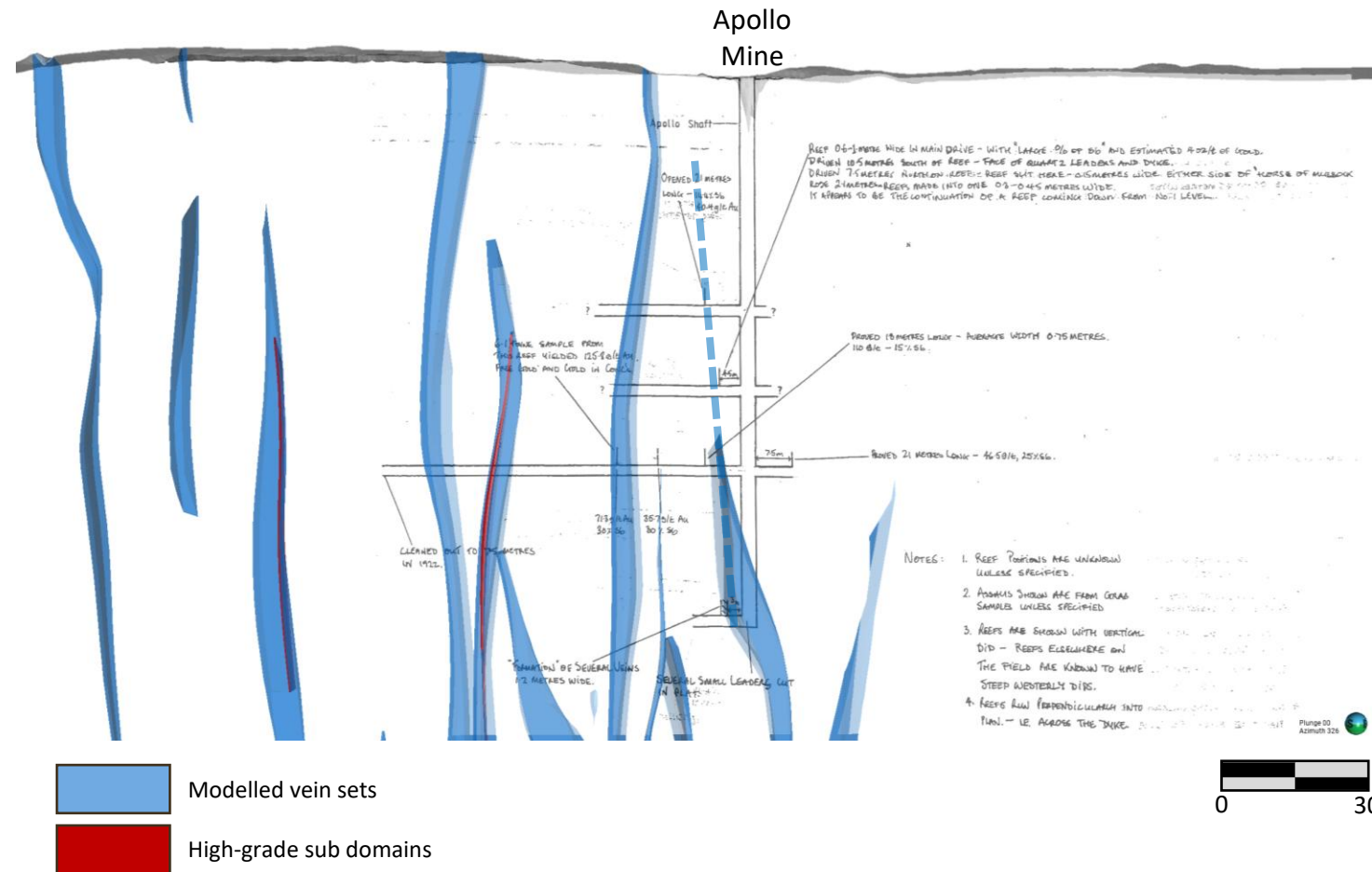
Victorian Gold Production – Rocking Because of a Change in Geology

- ✓ Today, Victoria is producing more gold than it has for 100 years
- ✓ 5 Gold Mines Operating Today – 500Koz/yr

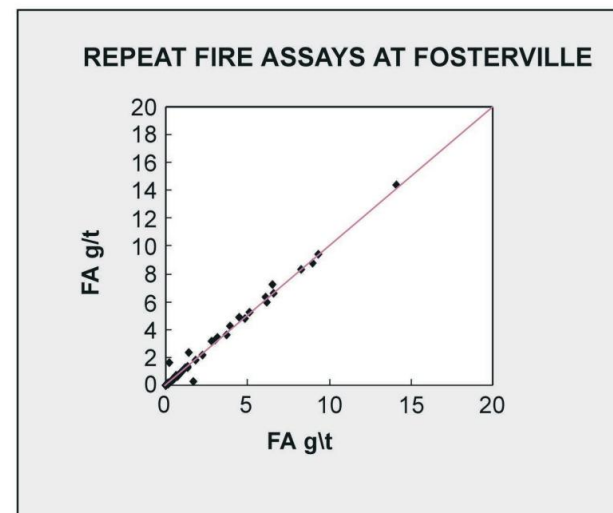
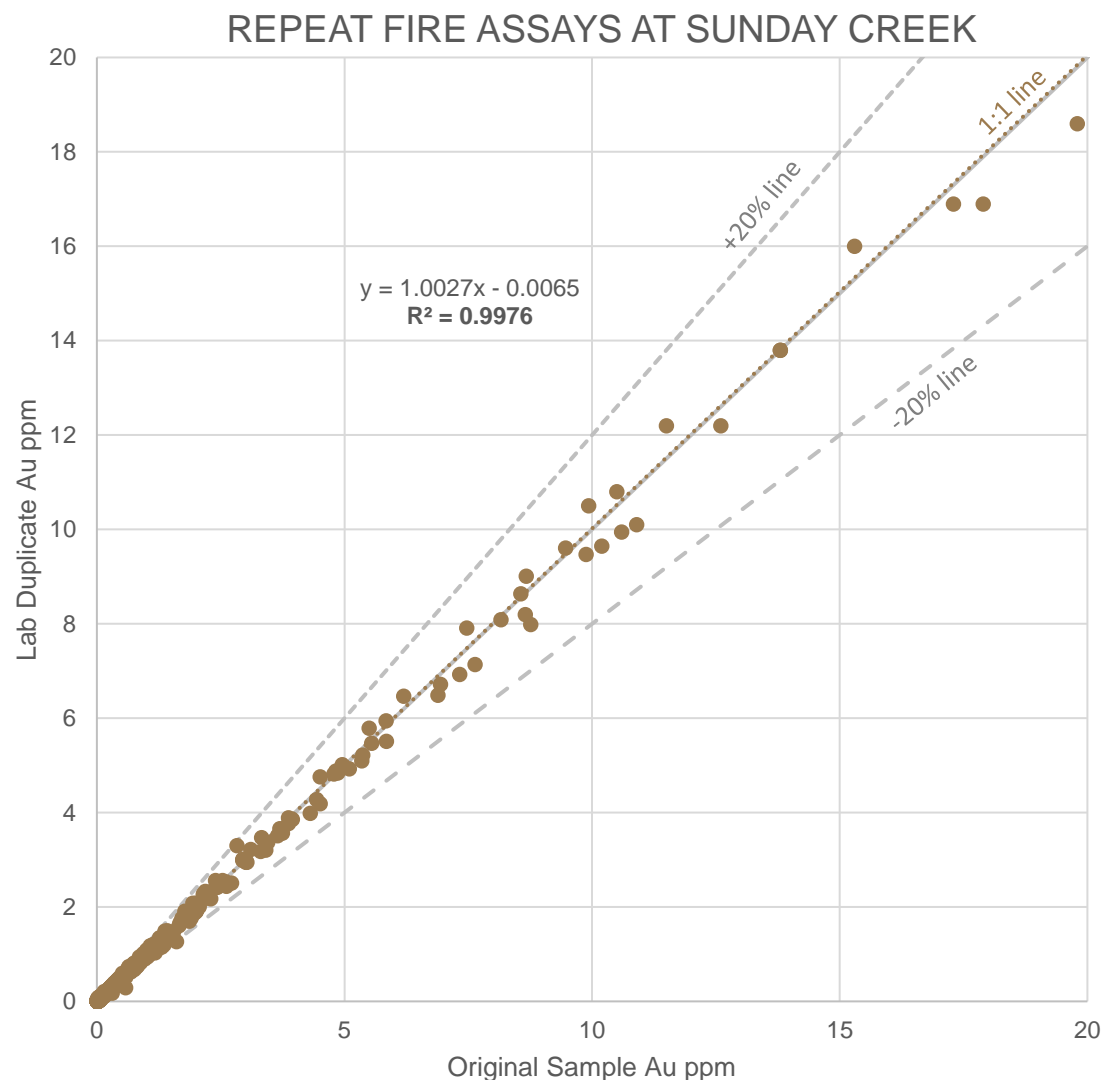


How to model and predict this style?

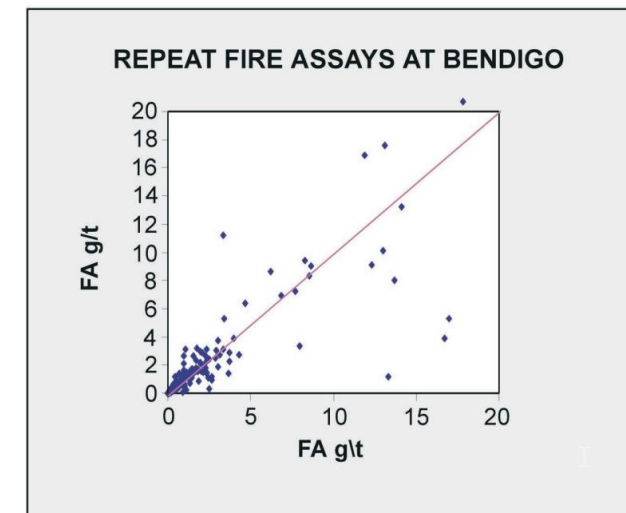
- Continuity of vein sets and grades are described in three dimensions across multiple datasets including:
 - ✓ Fifty years of historic mining records and drilled continuity below mined areas
 - ✓ Geological likeness
 - ✓ Structural oriented drill core data, quality control data and structural controls on mineralization trends
 - ✓ Geostatistics that demonstrate a low coefficient of variation



Lab Duplicates Demonstrate Homogeneity of Samples



*Fosterville – Kirkland Lake Gold
December 2016 Technical report*



Bendigo – GBM gold

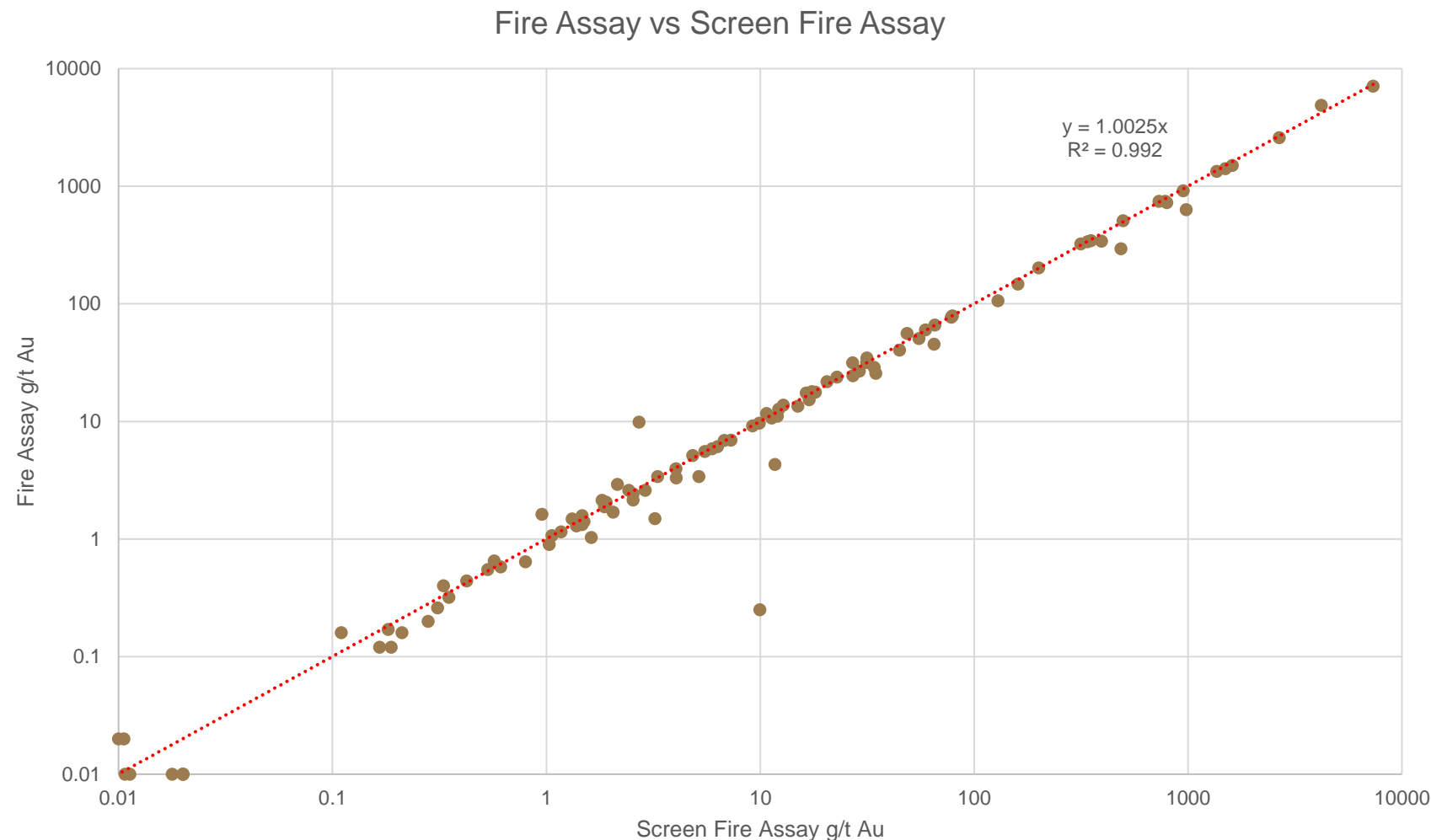
- ✓ Comparison of repeat fire assay data at Sunday Creek, Bendigo and Fosterville. All samples prepared in an LM5 pulverizer to nominal -75 micron with two samples taken from each pulp

High Grade is Not Always Nuggetty: SFA and FA Duplicates



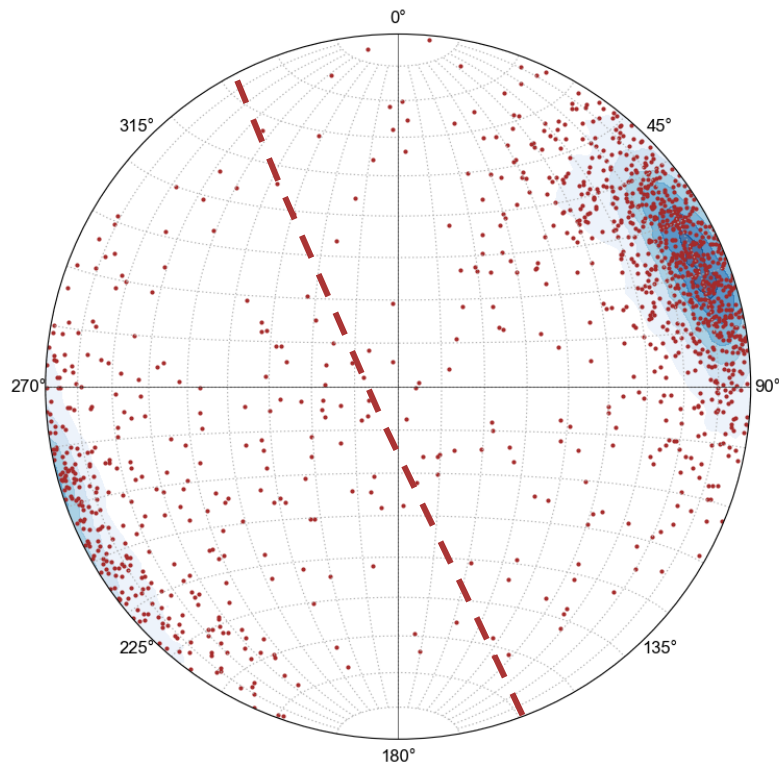
SDDSC117: 0.5 m @ 473.1 g/t AuEq (473.0 g/t Au, 0.0% Sb) from 913.6 m

TSXV: SXGC ASX: SX2



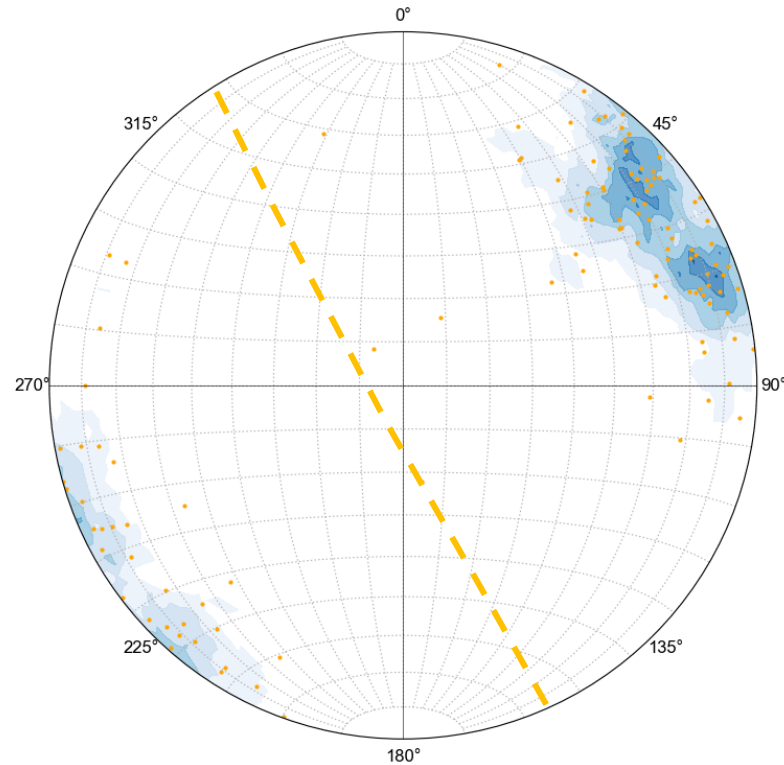
Highly repeatable results between Fire Assay (25g charge) and Screen Fire Assay (entire sample to extinction)

Structural Geology: Stereonets Inform Continuity



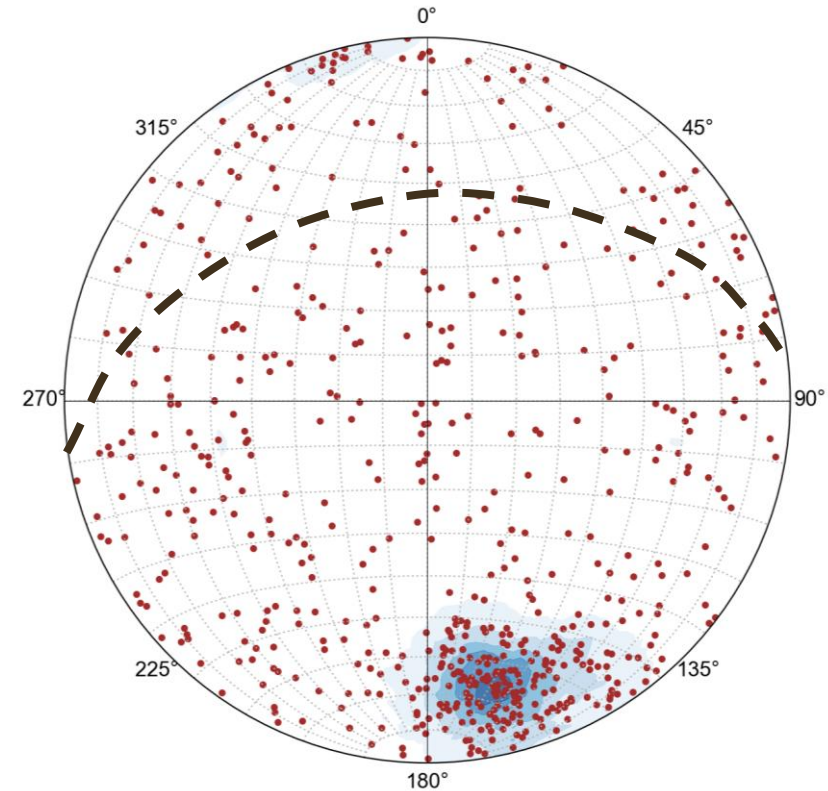
Stibnite bearing veins
high confidence orientations
N=1355

Subvertical vein arrays
and shear veins



Visible Gold bearing veins –
high confidence orientations
N=118

Consistent with Sb
bearing veins

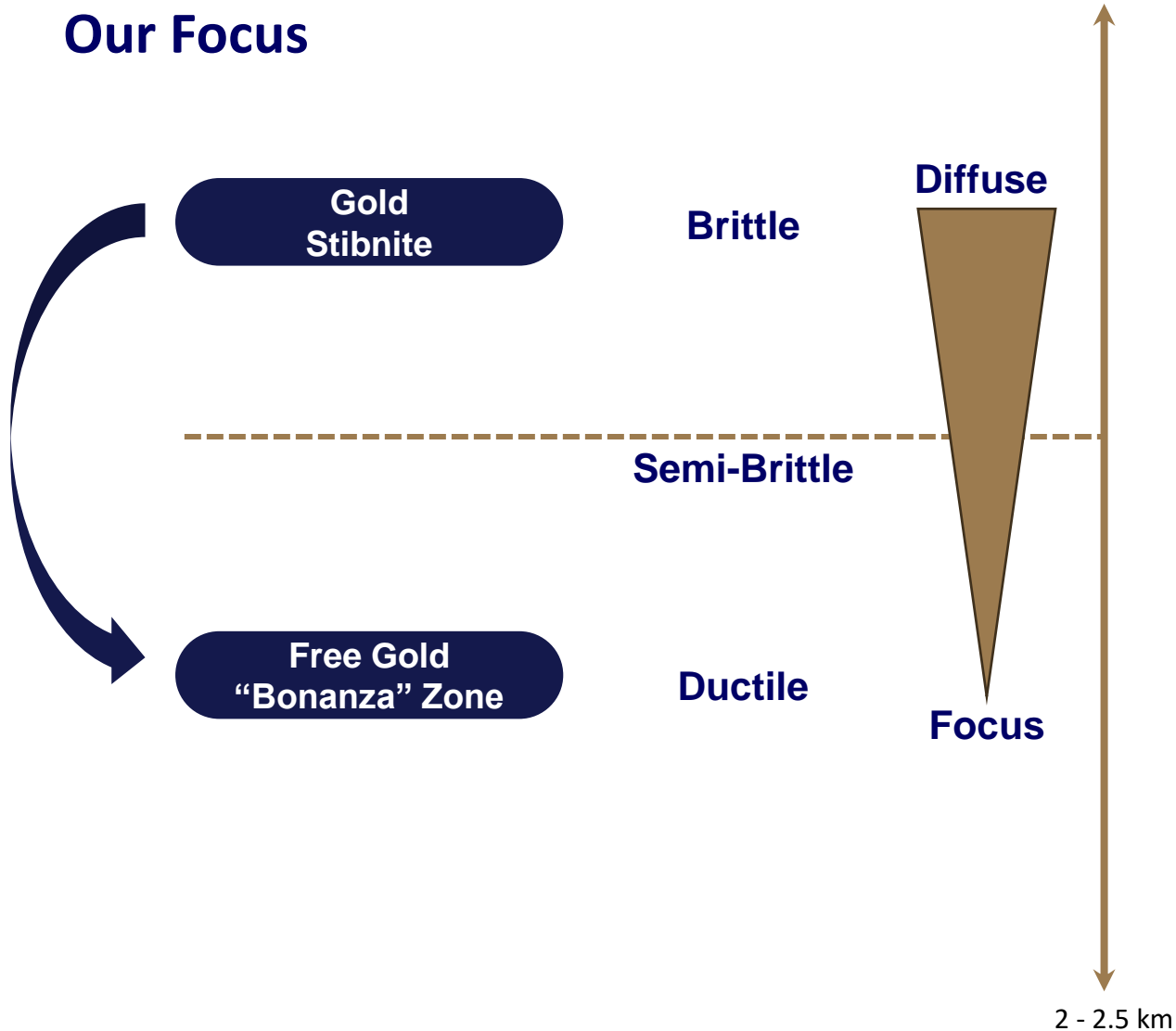


Pyrite veinlets
N = 609

Early lithological control
– follows dyke trend

Brittle to Ductile Transition

Our Focus

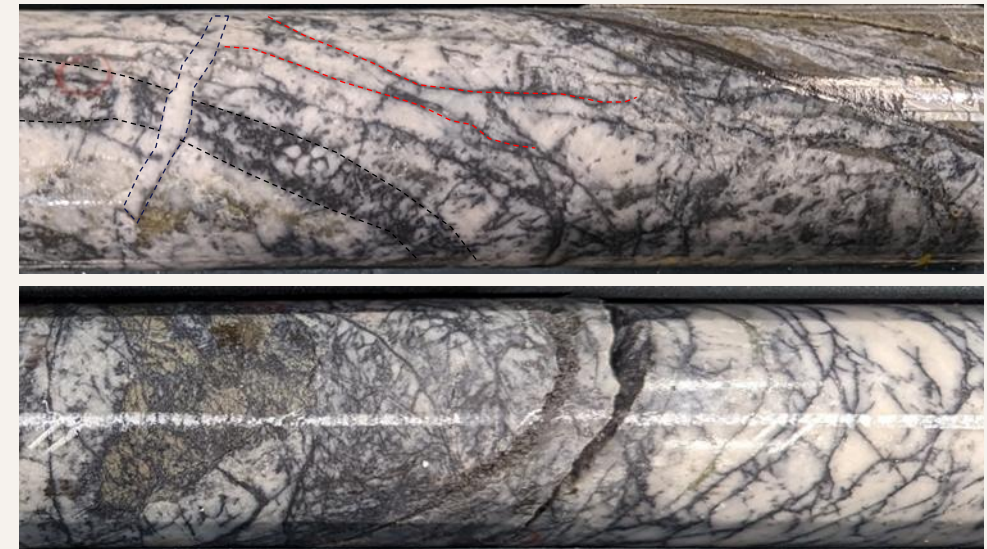


Brittle Features



Quartz-carbonate-stibnite extension veins in altered dyke

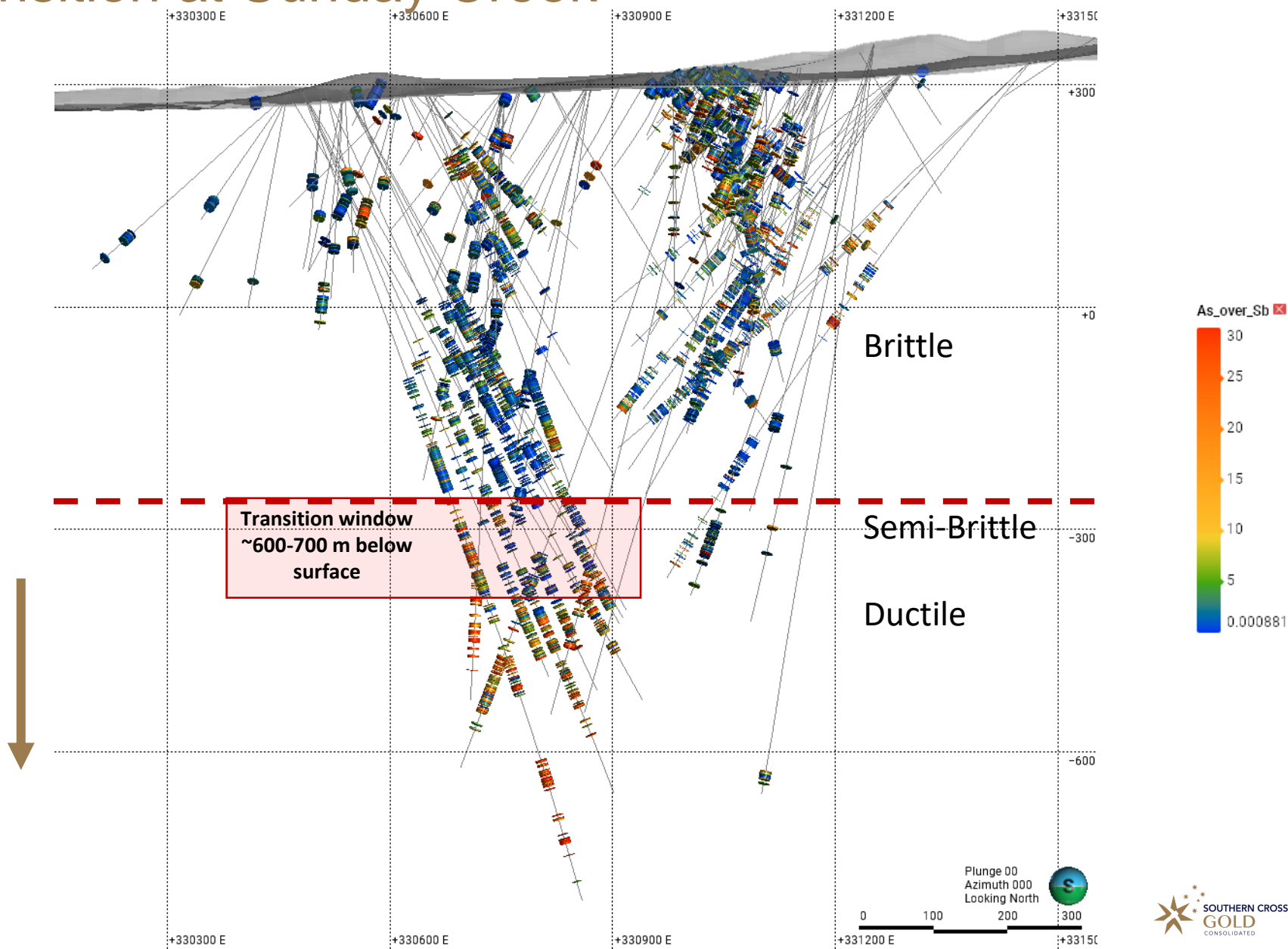
Ductile Features



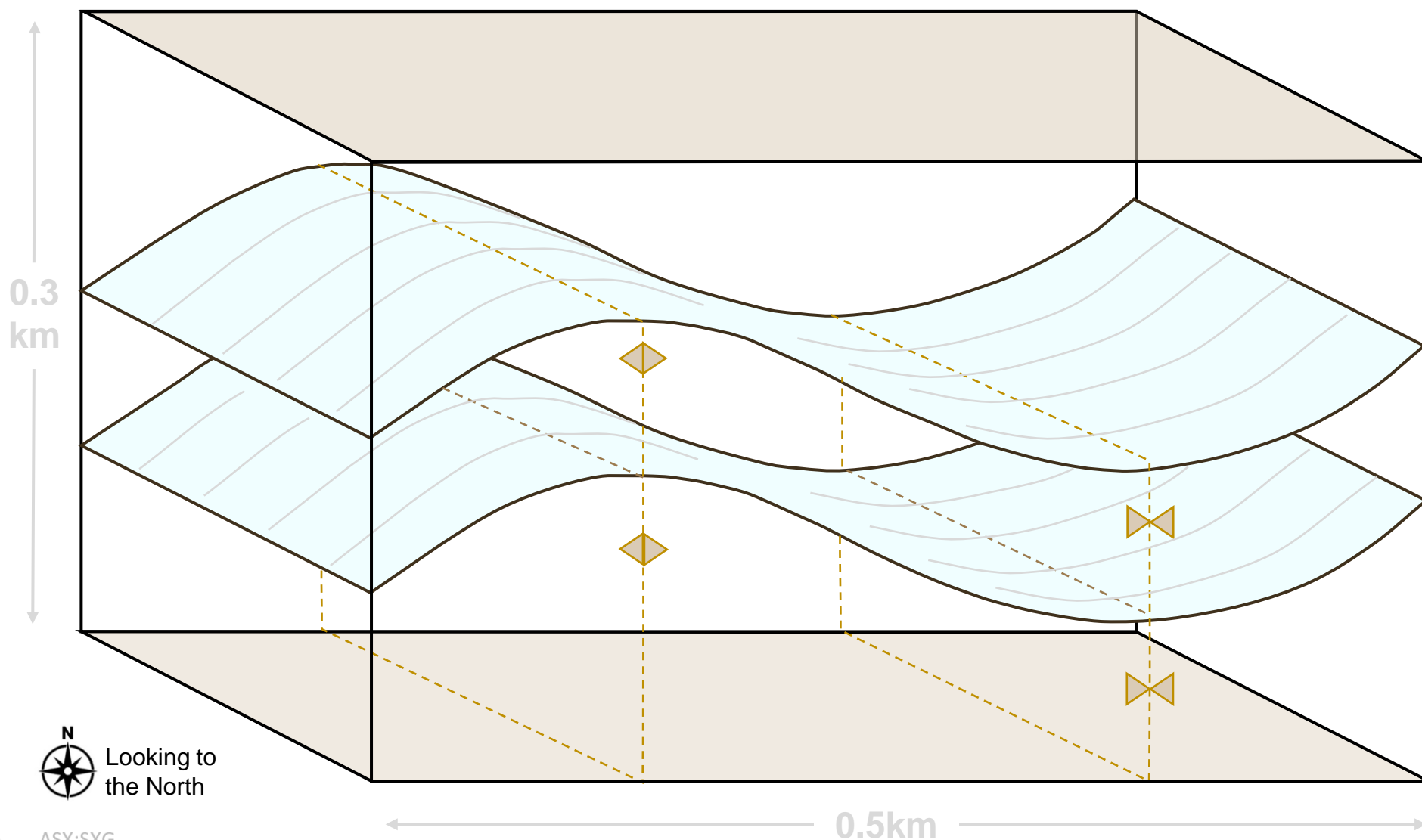
Brittle to Ductile Transition at Sunday Creek

Dominant brittle features

Decreasing Sb
Increased
observation of
Fibrous
Sulphosalts



Paragenesis of Sunday Creek Au-Sb mineralization



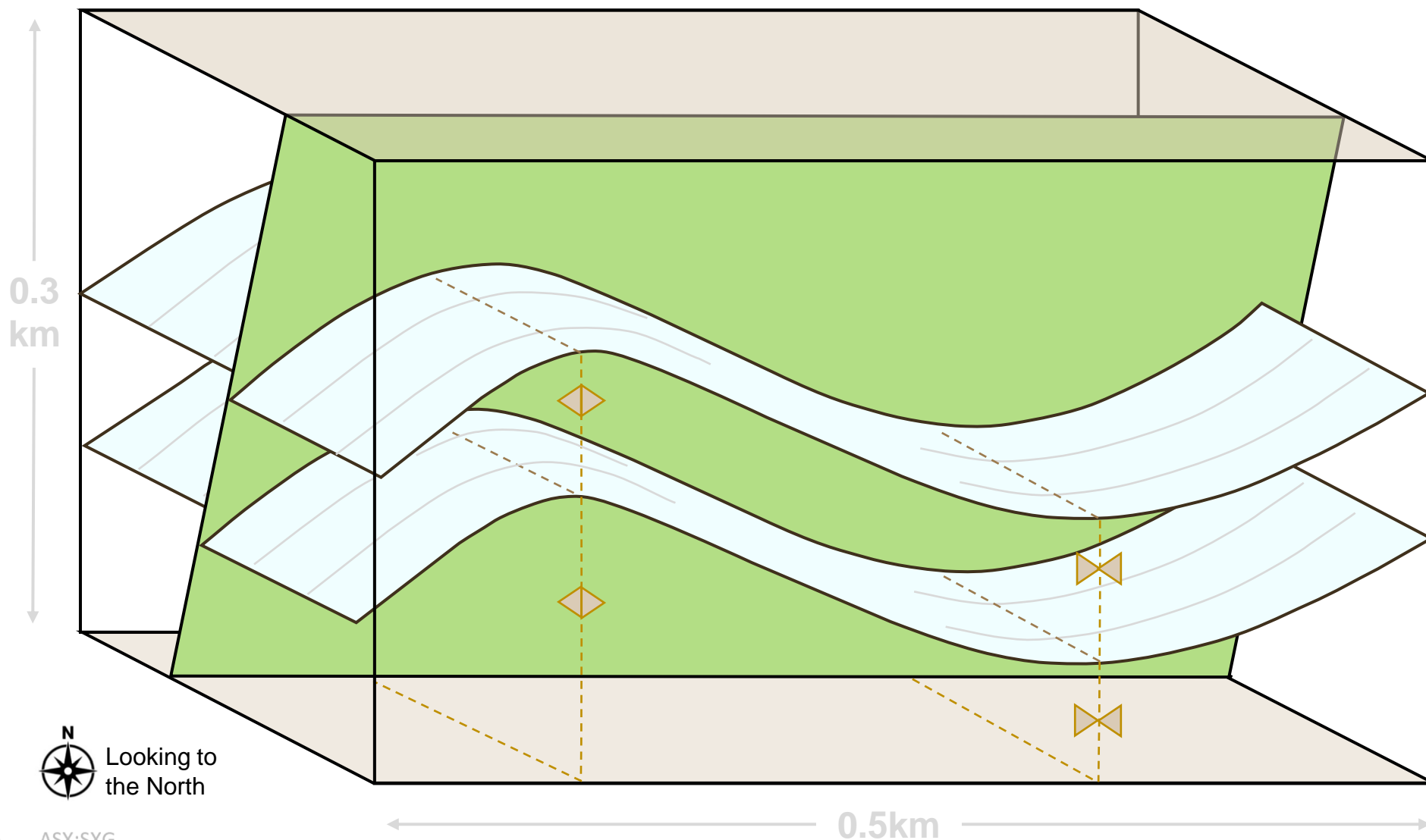
DESCRIPTION:

Northeast/southwest compression during the Middle Devonian Tabberabberan Orogeny creates gentle to open folding of sediments

LEGEND

-  Syncline fold hinge
-  Anticline fold hinge
-  Sb Au bearing Shear Veins & Vein sets
-  Stratigraphic package - Sandstone
-  Major Fault
-  Minor Fault
-  Alteration, Dyke & Dyke Breccia

Paragenesis of Sunday Creek Au-Sb mineralization



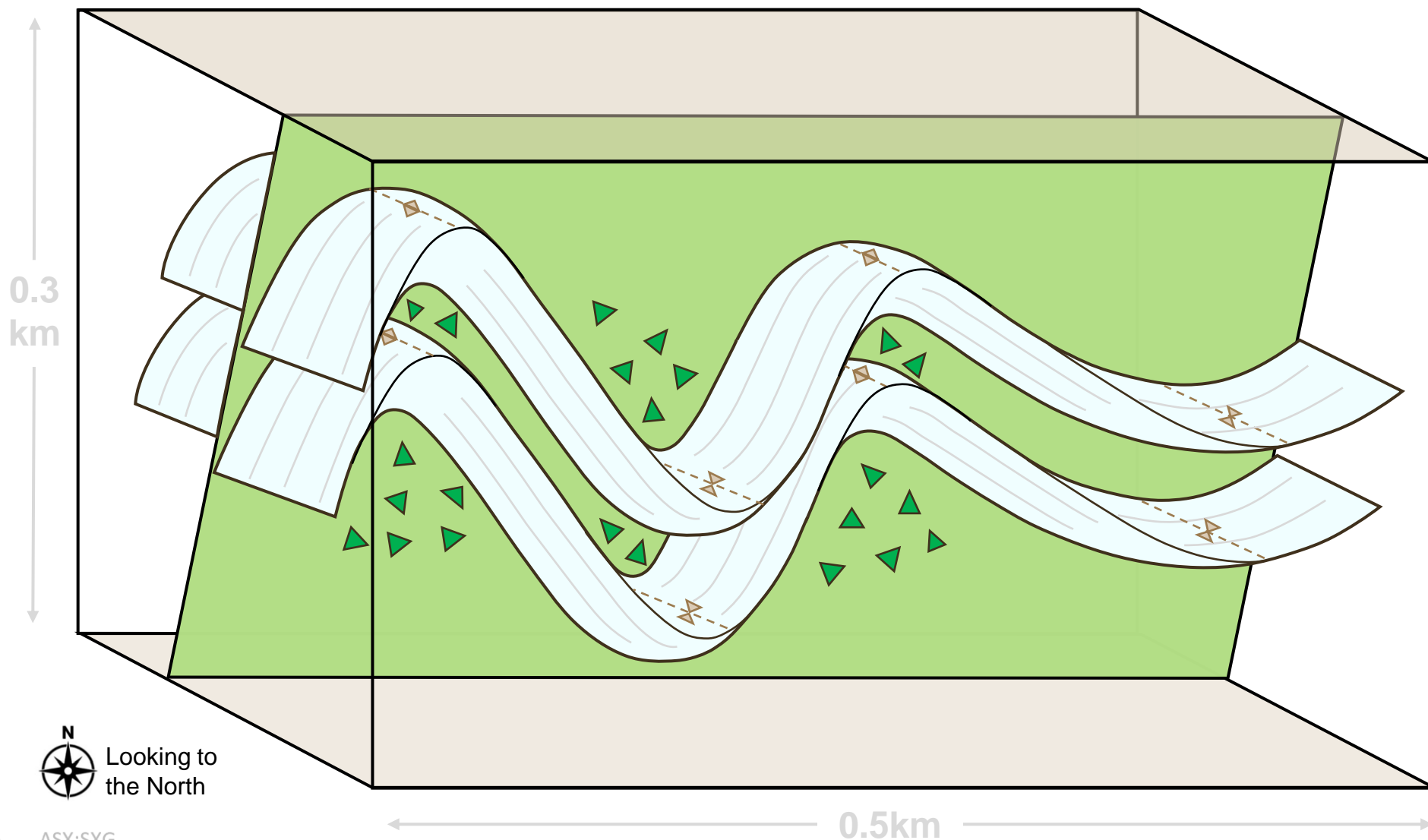
DESCRIPTION:

A quartz-diorite dyke trending approx. 080° intruded into pre-existing fault architecture at Sunday Creek, bisecting folds. During localized periods of extension

LEGEND

- X - Syncline fold hinge
- ◇ - Anticline fold hinge
- Sb Au bearing Shear Veins & Vein sets
- Stratigraphic package - Sandstone
- Major Fault
- Minor Fault
- Alteration, Dyke & Dyke breccia

Paragenesis of Sunday Creek Au-Sb mineralization



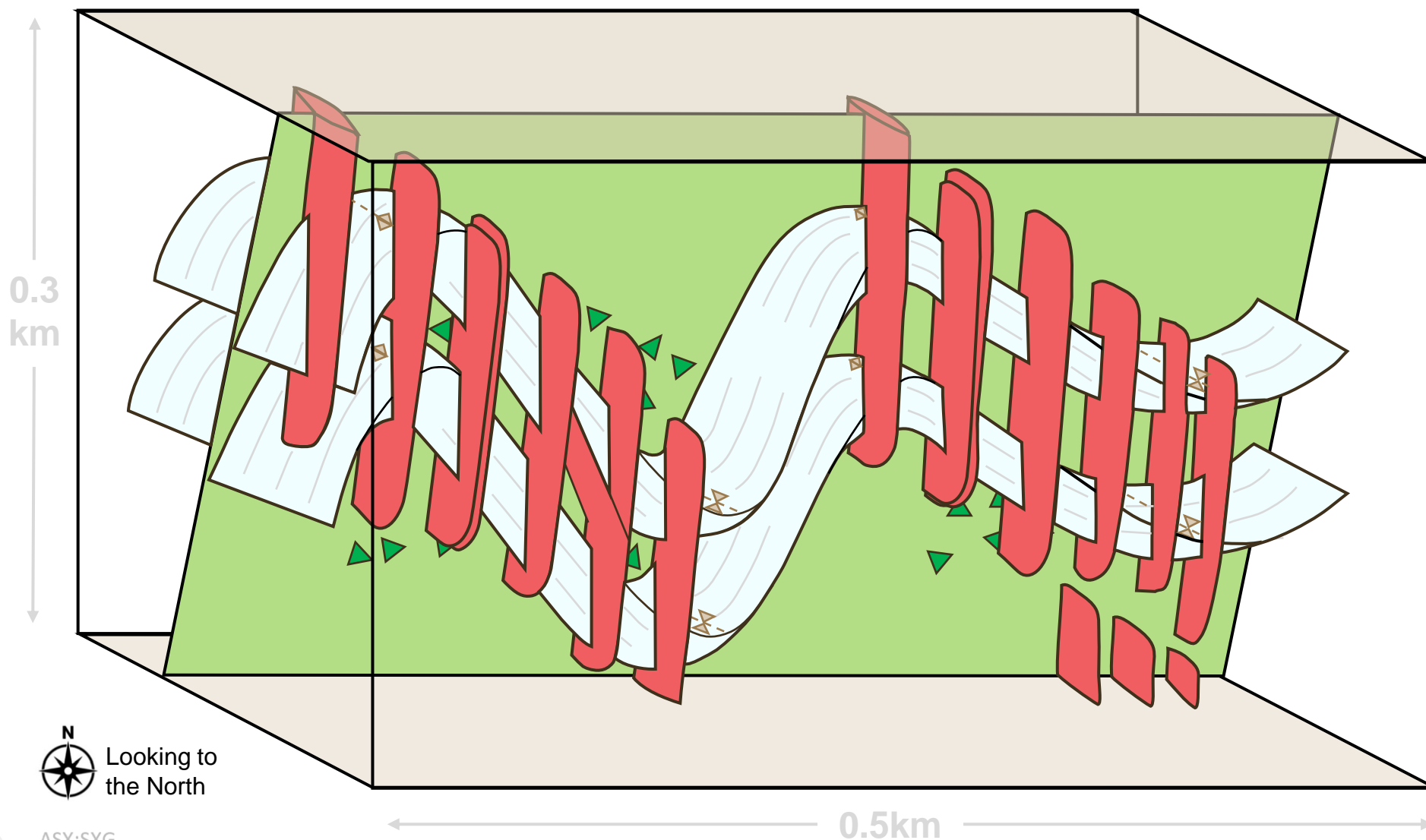
DESCRIPTION:

Compression of dyke and sediments causes tightening and parasitic folding of sediments and brecciation of preexisting dyke. Novel addition of dyke and fluids to brecciated areas.

LEGEND

- X- Syncline fold hinge
- ◇- Anticline fold hinge
- Sb Au bearing Shear Veins & Vein sets
- Stratigraphic package - Sandstone
- Major Fault
- Minor Fault
- Alteration, Dyke & Dyke breccia

Paragenesis of Sunday Creek Au-Sb mineralization



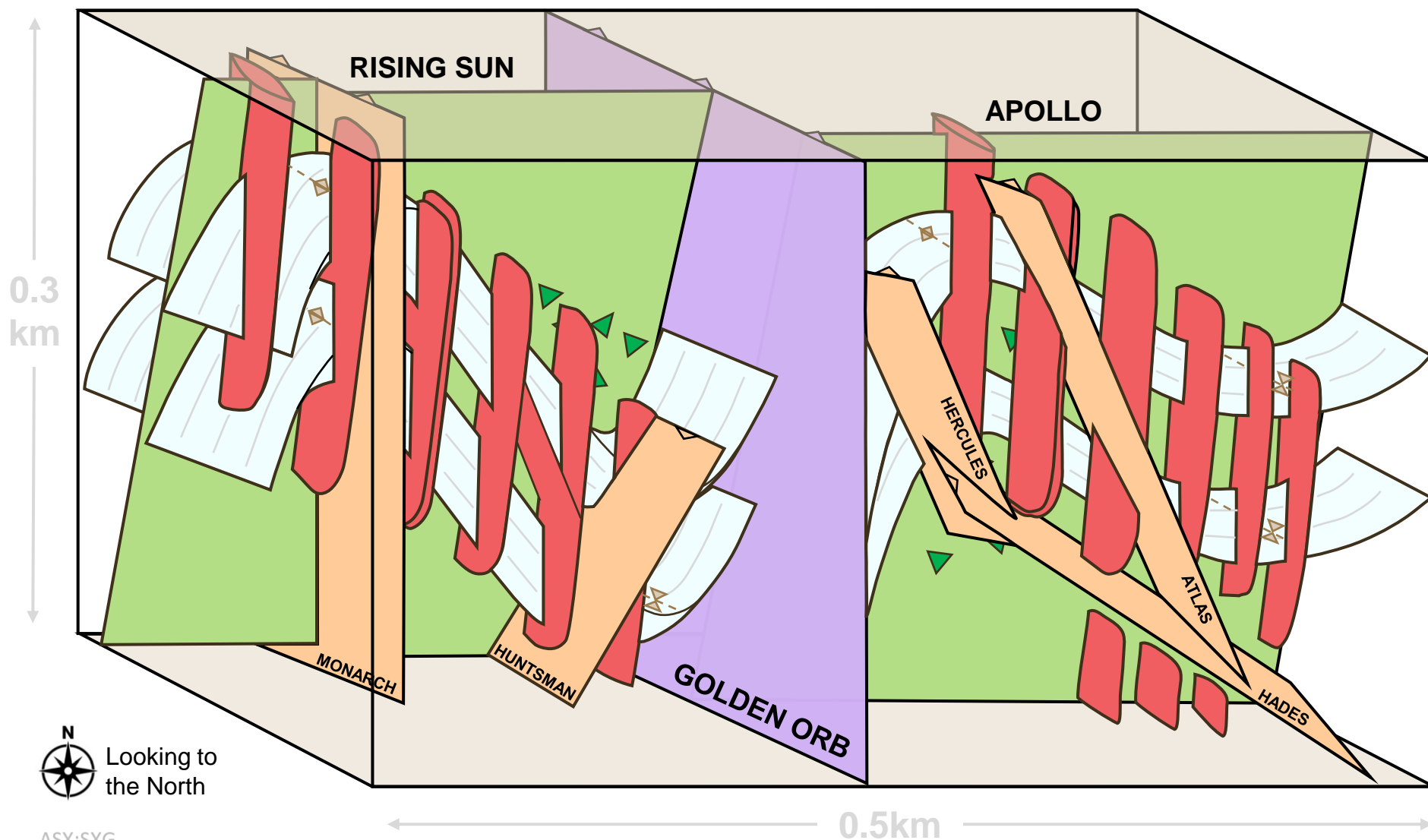
DESCRIPTION:

Mineralization forms within NNW striking vein sets, varying from centimeter - scale crack-seal veins, to veins with sheared margins, to messy, vein-breccias often carrying higher grades.

LEGEND

- X- Syncline fold hinge
- Y- Anticline fold hinge
- Sb Au bearing Shear Veins & Vein sets
- Stratigraphic package - Sandstone
- Major Fault
- Minor Fault
- Alteration, Dyke & Dyke breccia

Paragenesis of Sunday Creek Au-Sb mineralization



DESCRIPTION:

Regional series of late gouge faults that displace the dyke and mineralization.

LEGEND

- X- Syncline fold hinge
- ◇- Anticline fold hinge
- Sb Au bearing Shear Veins & Vein sets
- Stratigraphic package - Sandstone
- Major Fault
- Minor Fault
- Alteration, Dyke & Dyke breccia



Looking to the North