

5 May 2025

OUTSTANDING 40% MAXIMUM BOREHOLE NUCLEAR MAGNETIC POROSITY AND SPECIFIC YIELD RESULTS AT JAM24-04 FORMENTERA LITHIUM BRINE PROJECT, ARGENTINA

- Well 4 (JAM24-04), in the north east section of the Formentera concession near the highway, drilled to a depth of 401.5m, was surveyed with an **NMR tool and recorded a maximum of 40%** and an **average specific yield porosity of 9%**. This average is more than double the value used in the maiden Mineral Resource Estimate.
- Four brine zones were identified and delineated by brine conductivity - conductivity increased with depth.
- Below 87.45 m, zones 2, 3 and 4 show specific yield values with good vertical continuity. In these same areas, average total porosity values measured 23%, 31%, and 27%, respectively. As a result of a clay layer at 175-225m, the effectively drainable water content (SY) in these areas only reduced to approximately 9%.

Patagonia Lithium Ltd (ASX:PL3, Patagonia or Company) is very pleased to announce receipt of the completed Nuclear Borehole Magnetic Resonance (NMR) survey for well JAM 24-04 (well 4). Results for porosity and specific yield were excellent given the well is outside the zone delineated as high porosity (that averaged 13%).

		POROSITY % (TPOR)		SPECIFIC YIELD % (SY)	
Zone	Interval M's	MAXIMUM	AVERAGE	MAXIMUM	AVERAGE
1	44.8-87.45	46	36	33	21
2	87.45-148.5	37	23	19	10
3	148.5-285	48	31	40	9
4	285-383	45	27	30	9

Table 1. Porosity and specific yield values for the four zones surveyed.

Phillip Thomas, Executive Chairman, commented “These NMR porosity results **are excellent** and reflect the high porosity geology in the Paso basin. Sustaining pump rates of 3,500L/hour and high porosity at well 4 demonstrates the viability of the project. The NMR survey has confirmed the high porosity from 87m to 401m and the well was still open at depth. The Sy (specific yield) value is the drainable value which is excellent at an average of 9% (24% from cores sampled) with a maximum of 40%. This data has **substantial implications for the Mineral Resource calculation.**”

Capital structure

119.4m - PL3 shares
14.6m - PL3O quoted options
13.2m - unquoted options
2.0m - unquoted performance rights

Patagonia Lithium Ltd
Level 6, 505 Little Collins Street
Melbourne VIC 3000
<https://patagonialithium.com.au/>

Board

Phil Thomas - Exec Chair
Rick Anthon - NED
Pablo Tarantini - NED
Jarek Kopias - Co Sec

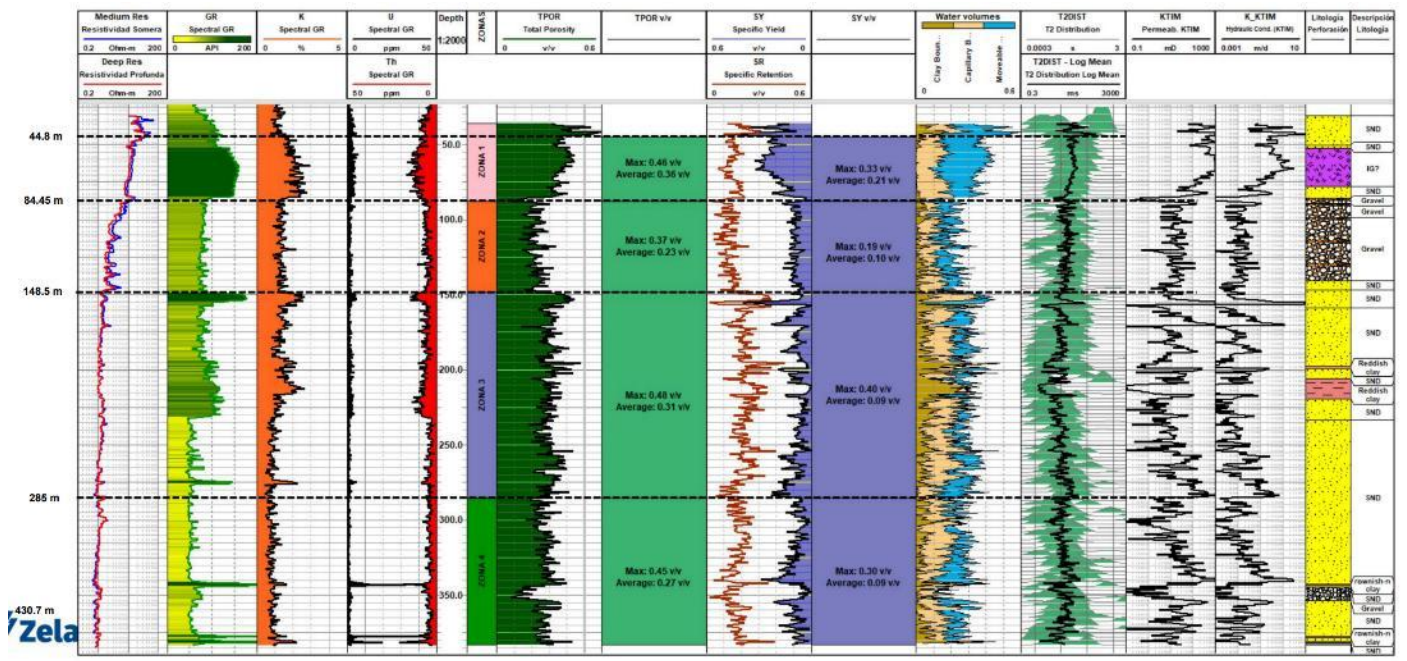


Figure 1. Four zones delineated by conductivity- from the lithium content - the average value of total porosity (TPOR) and specific yield (SY) is 28% and 9% respectively throughout the entire recorded interval.

The NMR survey included parameters of well fluid conductivity and temperature, formation resistivity measurement, natural radioactivity of the formation (total Gamma ray) and contributions of K, Th, U., sediment/rock fluid with nuclear magnetic resonance using time echo spacing of 800 microseconds.

Between 44.8m and 87.45m depth, an area where ignimbrites (volcanics) predominate, the magnetic resonance results indicate the presence of a good aquifer, with the highest specific yield content, reaching 21%.

Assays

JAM24-04	Sample No	from	to	Interval	SG	Lithium	SGS Lithium	Magnesium	Mg:Li ratio	Potassium	Conductivity	pH
Alex Stewart		M	M	M	g/ML	ppm		ppm		ppm	uS/cm	
Assay - Zone												
Standard 400ppm	S	Standard C-3001 (Li 400)			1.212	397		1475	3.72	3156	287.29	<1.0
	7	251.50	263.50	12.00	1.060	152		855	5.63	1409	99.65	7
	D	duplicate for 7			1.081	197	(9) 174	834	4.23	1947	128.18	7.2
sands	8	288.00	300.00	12.00	1.063	152		815	5.36	1425	104.35	7.3
	9	324.79	332.50	7.71	1.073	174	177.00	883	5.07	1704	117.84	7.3
	D	duplicate for 9			1.072	173	173.00	885	5.12	1636	117.84	7.3
	10	354.79	362.50	7.71	1.079	186	193.00	921	4.95	1758	124.73	7.2
	11	384.79	392.50	7.71	1.081	200	203.00	849	4.25	1904	127.89	7.2

Table 2. Assays of lithium from Well 4 showing increasing lithium value with depth.

Given well JAM 24-04 was drilled to test the limit of the lithium mineralisation to the east, the above results were very encouraging. Our proposed Direct Lithium Extraction system Ekosolve™ has advised that they can extract lithium from brines with a concentration greater than 100ppm of Lithium.

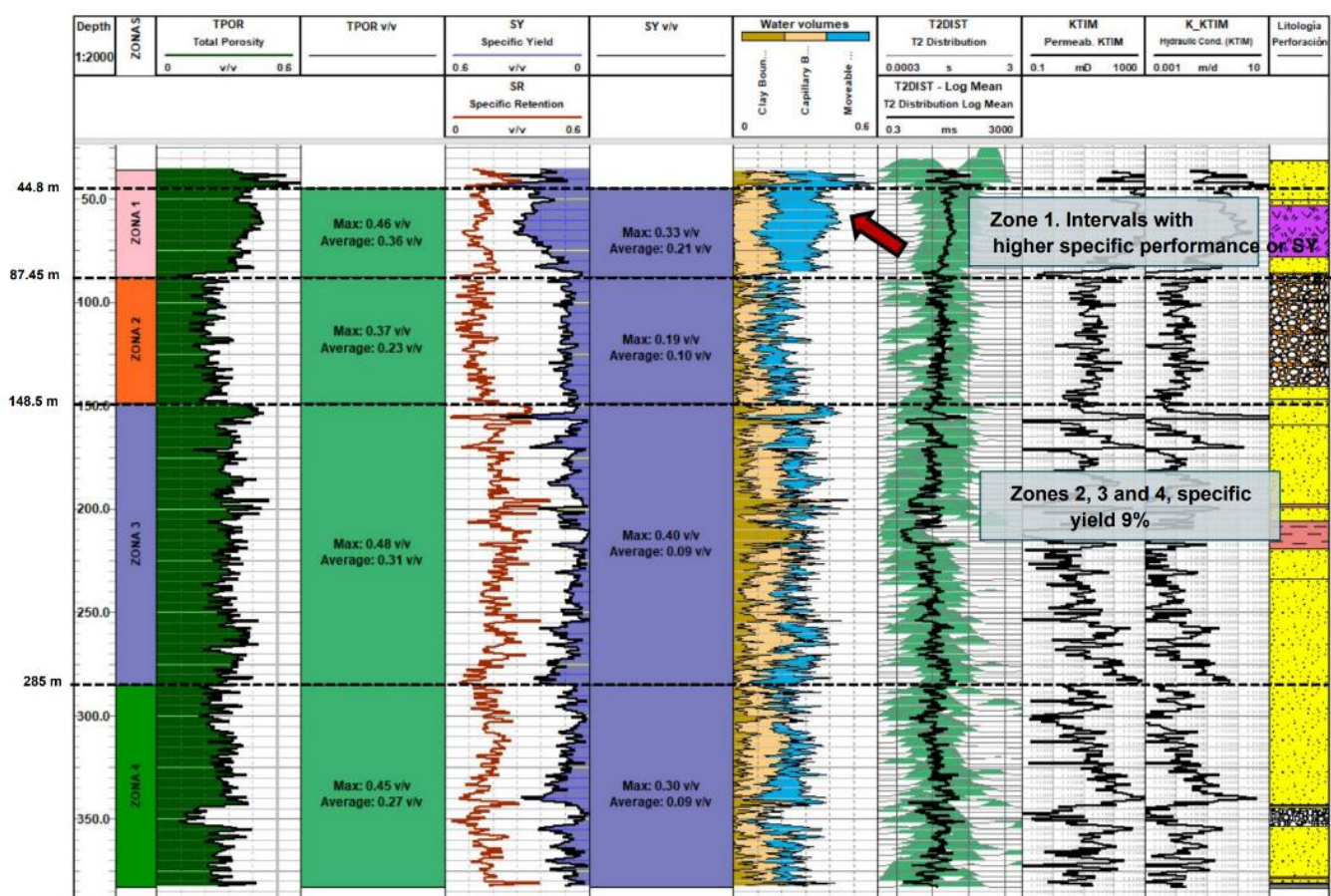


Figure 2. NMR survey results for JAM 24-04. Total porosity in dark green, the gray line in the total porosity column is at 50%. Moveable water is very high (in aqua) with red arrow. Specific yield (SY) is the crimson line 0-60%.

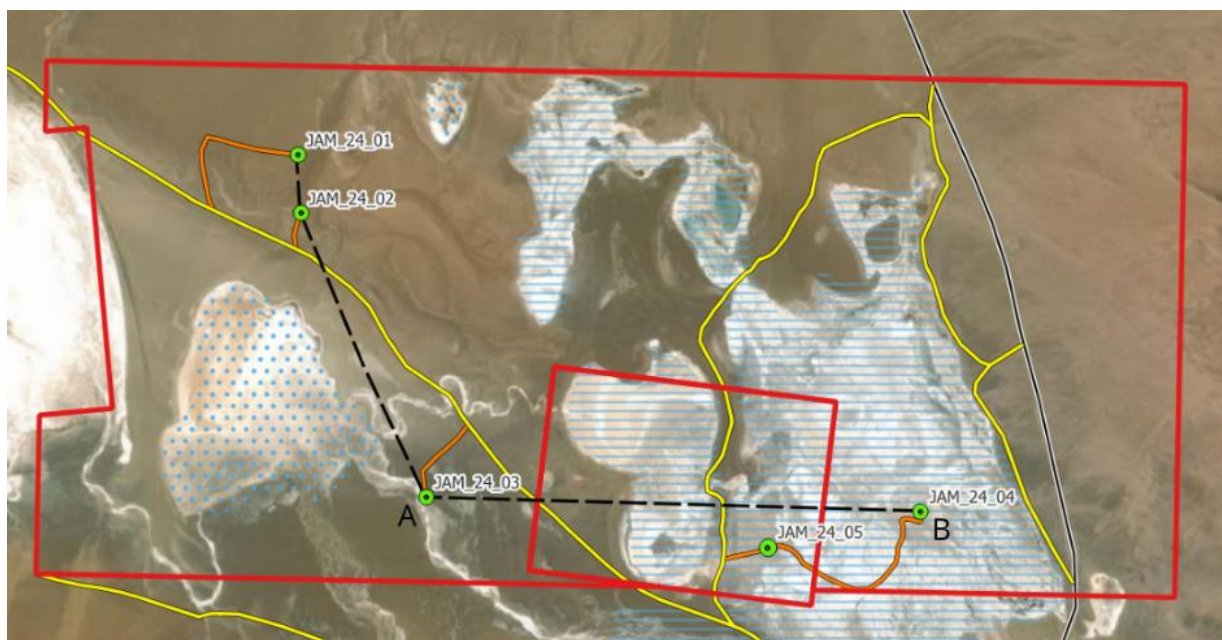


Figure 3. Map of Formentera and Cilon and well locations.

Well Identification details – JAM 24-04

Collar: E 748403 N 7410216

UTM zone 19S

Jam-24-04

WGS 84 / UTM Zone 19 S

X (East) 708397

Y (North) 7410217



PATAGONIA LITHIUM

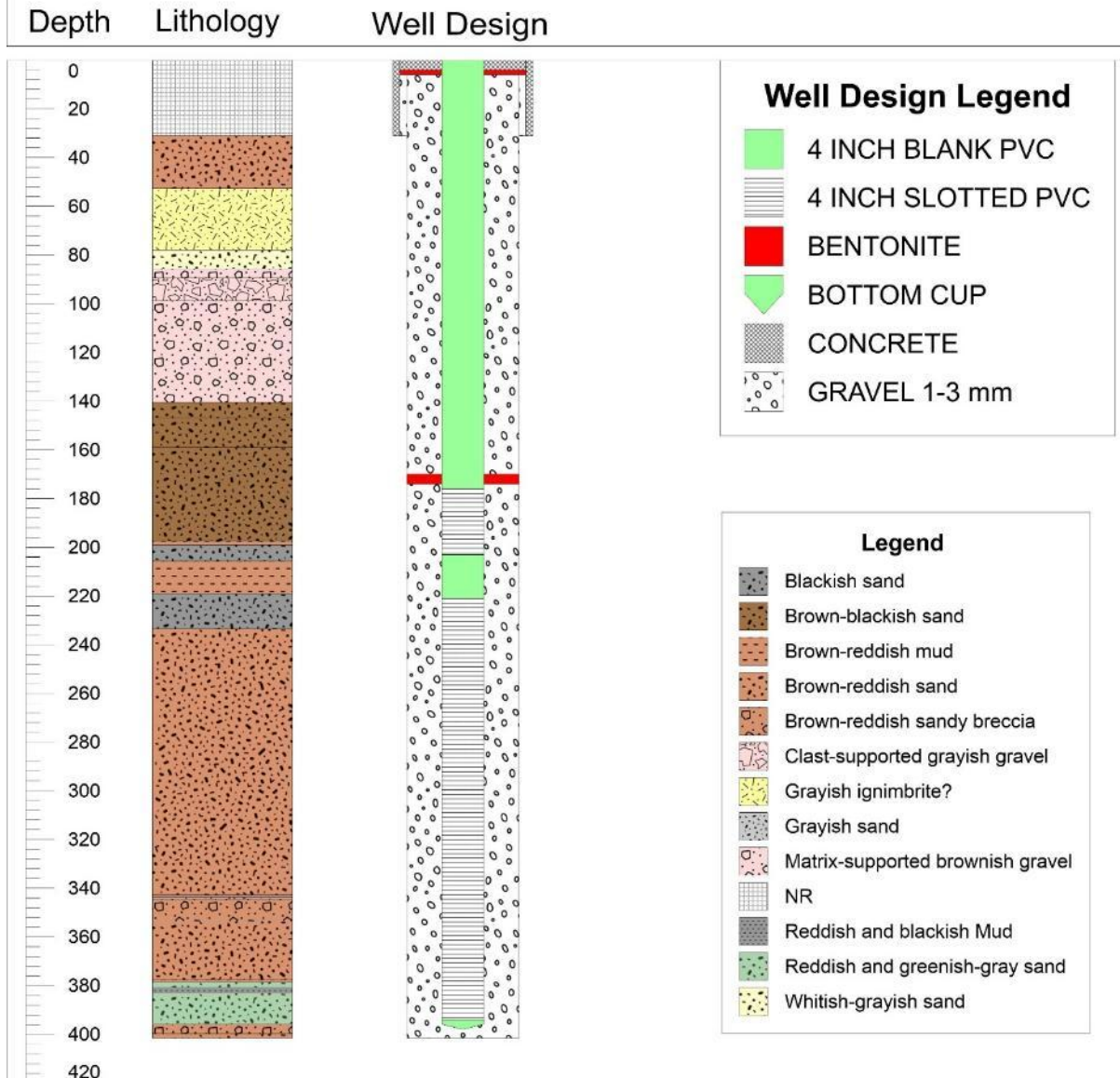


Figure 4. Lithology of well 4 showing significant conductivity unit 200m to 380m.

Authorised for release by the Board of the Company.

For further information please contact:

Phillip Thomas

Executive Chairman

Patagonia Lithium Ltd

M: +61 433 747 380

www.patagonialithium.com.au

E: phil@patagonialithium.com.au

Our socials - twitter X @pataLithium, Instagram, facebook, pinterest and youtube

About Patagonia Lithium Ltd

Patagonia Lithium has **two major lithium brine projects** – Formentera/Cilon in Salar de Jama, Jujuy province and Tomas III at Incahuasi Salar in Salta Province of northern Argentina in the declared lithium triangle. It has also been granted **41,746 Has** of concessions of which all twenty five have been granted where we are exploring for **ionic REE clays, Niobium, Antimony and lithium in pegmatites**. The Company has five exploration concession packages.

Since listing on 31 March 2023, surface sampling and MT geophysics have been completed, drill holes JAM 24-01, 24-02, 24-03 and 24-04 completed. Progress to date has been exceptional as measured by lithium assays and pump tests. The MT Geophysics at Tomas III on Incahuasi salar is very prospective. In July 2023, a 10 hole drill program was approved for Formentera and a three well program for Cilon has been approved. Samples as **high as 1,100ppm lithium** (2 June 2023 announcement) were recorded at Formentera and a Lithium value of **591ppm in well JAM 24-01** (Outstanding Assay Results from First Drilling in Argentina released on 3 May 2024). Very low resistivities were recorded to more than a kilometre depth during the MT Geophysics survey at Formentera.

Competent Person Statement

The information in this announcement that relates to exploration results is based on, and fairly represents information compiled by Phillip Thomas, MAIG FAusIMM, Technical Adviser to Patagonia Lithium Ltd and is Executive Chairman, who is a Fellow of the Australasian Institute of Mining and Metallurgy. Mr Thomas has sufficient experience relevant to the style of mineralisation and type of deposit under consideration, and to the activity which he has undertaken, to qualify as a Competent Person as defined in the 2012 Edition of the Joint Ore Reserves Committee (JORC) Australasian Code for Reporting of Exploration Results, Mineral Resources and Ore Reserves. Mr Thomas consents to the inclusion in this announcement of the matters based on this information in the form and context in which it appears.

The Company confirms it is not aware of any new information or data that materially affects the information in this announcement. The Company confirms that the form and context in which the Competent Person's findings are presented have not been materially modified from the original announcement.

JORC Code, 2012 Edition – Table 1

Section 1 Sampling Techniques and Data Well JAM 24-04

Criteria	JORC Code explanation	Commentary
Sampling techniques	<ul style="list-style-type: none"> Nature and quality of sampling (eg cut channels, random chips, or specific specialised industry standard measurement tools appropriate to the minerals under investigation, such as down hole gamma sondes, or handheld XRF instruments, etc). These examples should not be taken as limiting the broad meaning of sampling. Include reference to measures taken to ensure sample representivity and the appropriate calibration of any measurement tools or systems used. Aspects of the determination of mineralisation that are Material to the Public Report. In cases where 'industry standard' work has been done this would be relatively simple (eg 'reverse circulation drilling was used to obtain 1 m samples from which 3 kg was pulverised to produce a 30 g charge for fire assay'). In other cases, more explanation may be required, such as where there is coarse gold that has inherent sampling problems. Unusual commodities or mineralisation types (eg submarine nodules) may warrant disclosure of detailed information 	<ul style="list-style-type: none"> Diamond drilling was used to drill to 407m. The core recovery was greater than 95% where it was consolidated. A Atlas Copco Boyles C5C track-mounted diamond drill drilling HQ diameter and a tri-cone head drilling 6 inch diameter was used. Eleven 2,000L per test packer assays extracted brine using a single packer air lift system from the 85-395m level. 106 x 200L samples from well JAM 24-04 were tested for resistivity and specific gravity and were sent for assay at two Laboratories Alex Stewart and SGS. The results are set out in the above news release. A distilled water sample and a lithium standard sample C 3001 (400ppm) was supplied for analysis to SGS and Alex Stewart. They achieved 397ppm. Samples were tested for conductance in micro siemens with a Hanna multi meter. The meter was calibrated prior to use with fresh standards. It has a maximum value of 200 ms. Sediments were logged for fineness and clay content. No target minerals were encountered such as lithium carbonate or lithium chloride crystals, however at 60m there was a volcanic interval that may have spodumene. Well JAM 24-04 was drilled vertically and had an azimuth of zero. A Hanna Multi tester was used to measure pH, conductivity, SG and temperature for comparison purposes. Pumping test was conducted over a 72 hour period at 80m using an airlift packer system. The NMR tool was used to survey at 800microsecond intervals for the depth of the well with no obstruction.
Drilling techniques	<ul style="list-style-type: none"> Drill type (eg core, reverse circulation, open- hole hammer, rotary air blast, auger, Bangka, sonic, etc) and details (eg core diameter, triple or standard tube, depth of diamond tails, face-sampling bit or other type, whether core is oriented and if so, by what method, etc). 	<ul style="list-style-type: none"> An 83mm bit (HQ) was used with triple tube to drill the well and 3 metre long rods. A packer tool was lowered and samples taken at the nominated intervals. A 6 inch steel pipe to 30m depth was concreted into the collar of the well. The well was reamed out with a 61/4inch tricone to put in 4inch slotted pvc pipe
Drill sample recovery	<ul style="list-style-type: none"> Method of recording and assessing core and chip sample recoveries and results assessed. Measures taken to maximise sample recovery and ensure representative nature of the samples. Whether a relationship exists between sample recovery and grade and whether sample bias may have 	<ul style="list-style-type: none"> Brine samples were collected at each point relative to the porosity of the lithological unit intercepted and flow of brines when core was extracted. Two A samples were taken and stored, two B samples stored securely and one back up sample retained. Brine lithium assay values are not related to the quality of core samples. The porosity, transmissivity and permeability

Criteria	JORC Code explanation	Commentary
	<p>occurred due to preferential loss/gain of fine/coarse material.</p>	<p>of the lithologies where samples are taken influences the rate of brine inflow and brine characteristics.</p> <ul style="list-style-type: none"> Drilling is required to determine the flow characteristics of the adjacent aquifers, whereas interpolated ICP-OES analysis tests for lithium concentrations from the brine samples were recorded.
Logging	<p>Whether core and chip samples have been geologically and geotechnically logged to a level of detail to support appropriate Mineral Resource estimation, mining studies and metallurgical studies.</p> <ul style="list-style-type: none"> Whether logging is qualitative or quantitative in nature. Core (or costean, channel, etc) photography. The total length and percentage of the relevant intersections logged. 	<ul style="list-style-type: none"> All core was logged by two geologists. The sediments were analysed for grain size where they were sands, consolidated and unconsolidated clays, gravel and conglomerate units and the lower conglomerate/gravel units (refer lithological log schema and diagram). 70%-100% of the core was retrieved and logged. Only minor amounts of core were lost to brine flow in unconsolidated sediments in some intervals. Both Zelandez and Patagonia lithium geologists attended and reviewed the logged survey data from the NMR borehole raw data.
Sub-sampling techniques and sample preparation	<ul style="list-style-type: none"> If core, whether cut or sawn and whether quarter, half or all core taken. If non-core, whether riffled, tube sampled, rotary split, etc and whether sampled wet or dry. For all sample types, the nature, quality and appropriateness of the sample preparation technique. Quality control procedures adopted for all sub-sampling stages to maximise representivity of samples. Measures taken to ensure that the sampling is representative of the in situ material collected, including for instance results for field duplicate/second-half sampling. Whether sample sizes are appropriate to the grain size of the material being sampled. 	<ul style="list-style-type: none"> Brine samples were collected by sampling the packer airlift of brine which was approximately 200 litres per lift x 10-20 lifts and bottles A and B were filled from each lift with the objective of getting the brine sample (a 10L bottle decanted into one litre bottles) from the same aquifer region in the well to avoid sampling error. Duplicate sampling is undertaken for quality control purposes and a blank (distilled water and two standards were inserted. The lithium standard was C3001 – 400ppm lithium in solution. No Brine samples from the pump test were sent for assay as they are an average of aquifer flow into the well. The results of field test was 1.080gm/cm³ specific gravity and more than 160 mS/cm conductivity at 396m.
	<ul style="list-style-type: none"> The nature, quality and appropriateness of the assaying and laboratory procedures used and whether the technique is considered partial or total. For geophysical tools, spectrometers, handheld XRF instruments, etc, the parameters used in determining the analysis including instrument make and model, reading times, calibrations factors applied and their derivation, etc. Nature of quality control procedures adopted (eg standards, blanks, duplicates, external laboratory checks) and whether acceptable levels of accuracy (ie lack of bias) and precision have been established. 	<ul style="list-style-type: none"> The SGS laboratory was used for analyses and is also certified for ISO/IEC Standard 17025:2017. Alex Stewart laboratory is also certified for ISO/IEC Standard 17025:2017. Security control was kept with each bottle being taped closed and contained in a locked chest which was opened by SGS staff/Alex Stewart staff on delivery as part of the chain of custody protocol.

Criteria	JORC Code explanation	Commentary
Verification of sampling and assaying	<ul style="list-style-type: none"> The verification of significant intersections by either independent or alternative company personnel. The use of twinned holes. Documentation of primary data, data entry procedures, data verification, data storage (physical and electronic) protocols. Discuss any adjustment to assay data. 	<ul style="list-style-type: none"> Field duplicates, standards and blanks are used to monitor potential contamination of samples and the repeatability of analyses. It must be noted that each sample is a function of being averaged as approximately 200L of brine is extracted from the interval and then sampled in a 10L lot to get an average of the 200L extracted in the packer test. One litre bottles are sent for testing.
Location of data points	<ul style="list-style-type: none"> Accuracy and quality of surveys used to locate drill holes (collar and down-hole surveys), trenches, mine workings and other locations used in Mineral Resource estimation. Specification of the grid system used. Quality and adequacy of topographic control. 	<ul style="list-style-type: none"> The survey locations were located using handheld GPS with an accuracy of +/- 5m. The grid System used is POSGAR 94, Argentina Zone 3. Topographic control was obtained by handheld GPS. The topography is flat.
Data spacing and distribution	<ul style="list-style-type: none"> Data spacing for reporting of Exploration Results. Whether the data spacing and distribution is sufficient to establish the degree of geological and grade continuity appropriate for the Mineral Resource and Ore Reserve estimation procedure(s) and classifications applied. Whether sample compositing has been applied. 	<ul style="list-style-type: none"> Brine samples were collected within the hole based upon the depth required to access brines. This well is within 2850m of JAM 24-03. Block modelling will be used to estimate a resource given the basin contains flat lying sediments and can be consistent more than 2km apart.
Orientation of data in relation to geological structure	<ul style="list-style-type: none"> Whether the orientation of sampling achieves unbiased sampling of possible structures and the extent to which this is known, considering the deposit type. If the relationship between the drilling orientation and the orientation of key mineralised structures is considered to have introduced a sampling bias, this should be assessed and reported if material. 	<ul style="list-style-type: none"> The brine concentrations being explored for generally occur as sub-horizontal layers and lenses hosted by conglomerate, sand, halites, silt and/or clay. Vertical diamond drilling is ideal for understanding this horizontal stratigraphy and the nature of the sub-surface brine bearing aquifers. Surface sampling allows us to determine the presence of lithium and other minerals such as boron and presence of anions eg. Ca, Mg The orientation was vertical for the drill, but brine was sampled not sediments.
Sample security	<ul style="list-style-type: none"> The measures taken to ensure sample security. 	<ul style="list-style-type: none"> Data was recorded and processed by employees, consultants and contractors to the Company and overseen by senior management on-site. Samples were transported from the drill site to secure storage at the camp on a daily basis. Samples were then couriered by the senior Geologist to the laboratory on her shift rotation.
Audits or reviews	<ul style="list-style-type: none"> The results of any audits or reviews of sampling techniques and data. 	<ul style="list-style-type: none"> Samples from JAM 24-04 were sent to two laboratories and the comparison of the results with each other and with the standard were acceptable given the sampling system. The sampling was submitted however the Company's independent consultant and Competent Person has approved the procedures to date.

Criteria	JORC Code explanation	Commentary
		<ul style="list-style-type: none"> The CP inspected the SGS and Alex Stewart laboratories on 6 May 2024 to ensure the laboratory contamination is non-existent and discuss and audit handling procedures with the staff.

Section 2 Reporting of Exploration Results

(Criteria listed in the preceding section also apply to this section.)

Criteria	JORC Code explanation	Commentary
Mineral tenement and land tenure status	<ul style="list-style-type: none"> Type, reference name/number, location and ownership including agreements or material issues with third parties such as joint ventures, partnerships, overriding royalties, native title interests, historical sites, wilderness or national park and environmental settings. The security of the tenure held at the time of reporting along with any known impediments to obtaining a licence to operate in the area. 	<ul style="list-style-type: none"> The Formentera/Cilon Lithium Project consists of two tenements located in Jujuy Province, Argentina. The tenement is owned by Patagonia Lithium SA. The Company executed a purchase agreement on 18 December 2022 and paid for it on 19 December 2022.
Exploration done by other parties	<ul style="list-style-type: none"> Acknowledgment and appraisal of exploration by other parties. 	<ul style="list-style-type: none"> No historical exploration has been undertaken on this licence area. The Cilon concession area has been operated as a borate mine in the past although details of production records have not been available. The application for the drilling permit has passed all the necessary environmental stages and is ready to be issued.
Geology	<ul style="list-style-type: none"> Deposit type, geological setting and style of mineralisation. 	<ul style="list-style-type: none"> The Formentera/Cilon licence area covers most of the salar proper with minor alluvial cover to the southwest. The lithium concentrated brine is at depth from MT geophysics sourced data and occurs locally from hot fluids passing through lithium minerals (volcanics) and altered intrusives and is concentrated in brines hosted within basin alluvial sediments and evaporites.
Drill hole Information	<ul style="list-style-type: none"> A summary of all information material to the understanding of the exploration results including a tabulation of the following information for all Material drill holes: <ul style="list-style-type: none"> easting and northing of the drill hole collar elevation or RL (Reduced Level – elevation above sea level in metres) of the drill hole collar dip and azimuth of the hole down hole length and interception depth hole length If the exclusion of this information is justified on the basis that the information is not Material and this exclusion does not detract from the understanding of the report, the Competent Person should clearly explain why this is the case 	<ul style="list-style-type: none"> Collar: E 748403 N 7410216 UTM zone 19S Dip: -90 degrees Azimuth: 0 degrees. Depth: – 401.5m
Data aggregation methods	<ul style="list-style-type: none"> In reporting Exploration Results, weighting averaging techniques, maximum and/or minimum grade 	<ul style="list-style-type: none"> Assay results were analysed by SGS/Alex Stewart method using ICP-OES and interpolation to

Criteria	JORC Code explanation	Commentary
	<p>truncations (eg cutting of high grades) and cut-off grades are usually Material and should be stated.</p> <ul style="list-style-type: none"> Where aggregate intercepts incorporate short lengths of high grade results and longer lengths of low grade results, the procedure used for such aggregation should be stated and some typical examples of such aggregations should be shown in detail. The assumptions used for any reporting of metal equivalent values should be clearly stated. 	<p>correct for errors. Measurements were taken from each brine sample. Lithium values will be reported in ppm or mg/L.</p>
Relationship between mineralisation widths and intercept lengths	<ul style="list-style-type: none"> These relationships are particularly important in the reporting of Exploration Results. If the geometry of the mineralisation with respect to the drill hole angle is known, its nature should be reported. If it is not known and only the down hole lengths are reported, there should be a clear statement to this effect (eg 'down hole length, true width not known'). 	<ul style="list-style-type: none"> The brine layers are horizontal to sub-horizontal therefore the intercepted thicknesses of brine layers would be true thickness as the sample hole is vertical. The brine flowed from the walls of the hole in a section accessed by the packer tube from 2m so the intercept width is variable depending on the porosity and transmissivity of the surrounding sands and clays and where it is located in the lithological unit.
Diagrams	<ul style="list-style-type: none"> Appropriate maps and sections (with scales) and tabulations of intercepts should be included for any significant discovery being reported These should include, but not be limited to a plan view of drill hole collar locations and appropriate sectional views. 	<ul style="list-style-type: none"> Refer to maps in figure 3.
Balanced reporting	<ul style="list-style-type: none"> Where comprehensive reporting of all Exploration Results is not practicable, representative reporting of both low and high grades and/or widths should be practiced to avoid misleading reporting of Exploration Results. 	<ul style="list-style-type: none"> All assay results will be reported as received from the laboratory. The laboratory will provide a single value for each one litre bottle of brine.
Other substantive exploration data	<ul style="list-style-type: none"> Other exploration data, if meaningful and material, should be reported including (but not limited to): geological observations; geophysical survey results; geochemical survey results; bulk samples – size and method of treatment; metallurgical test results; bulk density, groundwater, geotechnical and rock characteristics; potential deleterious or contaminating substances. 	<ul style="list-style-type: none"> All meaningful and material information is reported.
Further work	<ul style="list-style-type: none"> The nature and scale of planned further work (eg; tests for lateral extensions or depth extensions or large-scale step-out drilling). Diagrams clearly highlighting the areas of possible extensions, including the main geological interpretations and future drilling areas, provided this information is not commercially sensitive. 	<ul style="list-style-type: none"> A further well JAM 24-05 on the Cilon concession is proposed after an MRE is computed in this stage of the campaign. A upgrade of the mineral resource calculation by WSP Australia will be completed once the data from wells 1,3 and 4 is completed. A production well between wells JAM 24-01 and 02 is planned and a 1,000 tonne Li_2CO_3 demonstration plant.