

EDV EVR

Toronto
Stock
Exchange

Australian
Securities
Exchange

ENDEAVOUR MINING AGBAOU EXPLORATION RESULTS INCLUDE 32.5 GPT OVER 5.6 METRES AND 8.2 GPT OVER 8.8 METRES

Vancouver, October 9, 2014 – Endeavour Mining Corporation (“Endeavour” or the “Corporation”) (TSX:EDV) (ASX:EVR) (OTCQX:EDVMF) reports the ongoing Agbaou exploration drilling demonstrates continuity of grades and widths of strike extensions of the deposits in the North pit and the West pit.

Table 1: Key Drilling Highlights

Deposit	Hole ID	From (m)	To (m)	Length (m)	True Width (m)	Grade (g/t Au)
MPN	AGBRC1745	20	30	10	8.0	5.0
WP	AGBRC1780	100	109	9	7.2	3.0
P2	AGBRC1837	1	78	77	Unknown	8.6
	including	53	58	5		22.1
	AGBRC1854	0	27	27	Unknown	7.2
	including	9	13	4		34.7
P4	AGBRC1792	77	84	7	5.6	32.5
	AGBRC1895	87	98	11	8.8	8.2
P6	AGBRC1843	32	51	19	15.2	4.8

For additional information, contact:

Doug Reddy
SVP Business Development
+1 604 609 6114
dreddy@endeavourmining.com

UK/Europe: Bobby Morse
Buchanan
+44 20 7466 5000
bobbym@buchanan.uk.com

Endeavour Mining Corporation
Corporate Office
Suite 3123, 595 Burrard Street,
P.O. Box 49139
Vancouver, BC V7X 1J1 Canada
Tel: +1 604 685 4554

www.endeavourmining.com

A Cayman Islands exempted company
with limited liability.

ARBN 153 067 639

Neil Woodyer, CEO, stated

“Results from the ongoing Agbaou drilling program are giving us confidence of being able to replace and expand our reserve base and extend the mine life at Agbaou. The areas being drilled are immediately adjacent to the North and West pits and therefore represent similar haulage distances for any reserve that may be identified in these areas. Drilling is returning strong grades and widths and the majority of the intercepts are near surface and therefore oxide mineralization.”

The results received to date have consistently demonstrated continuity of grades and widths and confirmed the quality and interpretation of the mineralized zones. Of the 165 holes completed, 88% intersected mineralization. Additional drilling highlights with true widths, and cross sections of the P2 and P6 mineralization are provided in the appendix to this news release.

Exploration Drill Program

A reverse-circulation (“RC”) drilling program began in August 2014, and to date a total of 165 holes (15,266 metres) were drilled to confirm and further test exploration targets and extensions to the principal mineralized zones in the North and West pit areas (News Releases dated August 3, 2011, September 12, 2011 and September 6, 2012). The intercepts are shallow; all assays are at

vertical depths of less than 100 metres with a majority of the intersections at depths of less than 60 metres.

Two holes on the P2 target intersected mineralization with high grades over very wide intersections (see Section A-A' in the appendix to this news release) which include 77 metres at 8.6 g/t gold (including 5 metres at 22.1 g/t gold) and 27 metres at 7.2 g/t gold (including 4 metres at 34.7 g/t gold). These wide, high-grade intersections are related to "mottled" quartz-veins, however, they appear to represent a change in orientation. Additional drilling is required to determine the orientation and strike extent of this mineralization.

These new results are currently being incorporated into the drilling database and will reduce the nominal drill spacing down to 30 metres by 20 metres over extensions of the Main and West deposits as well as new deposits in the P2, P4, P5, P6 and P7 (Figure 1) areas. General dimensions of the mineralization in these areas are provided in Table 2. This additional data will be the basis for a revised mineral resource estimate planned to improve classification of portions of the mineral resource from Inferred to at least Indicated and incorporated into a revised mineral reserve estimate. Additions to resources and reserves will be added during the normal year-end resource and reserve estimates for Agbaou.

Figure 1: Agbaou Exploration Drill Plan

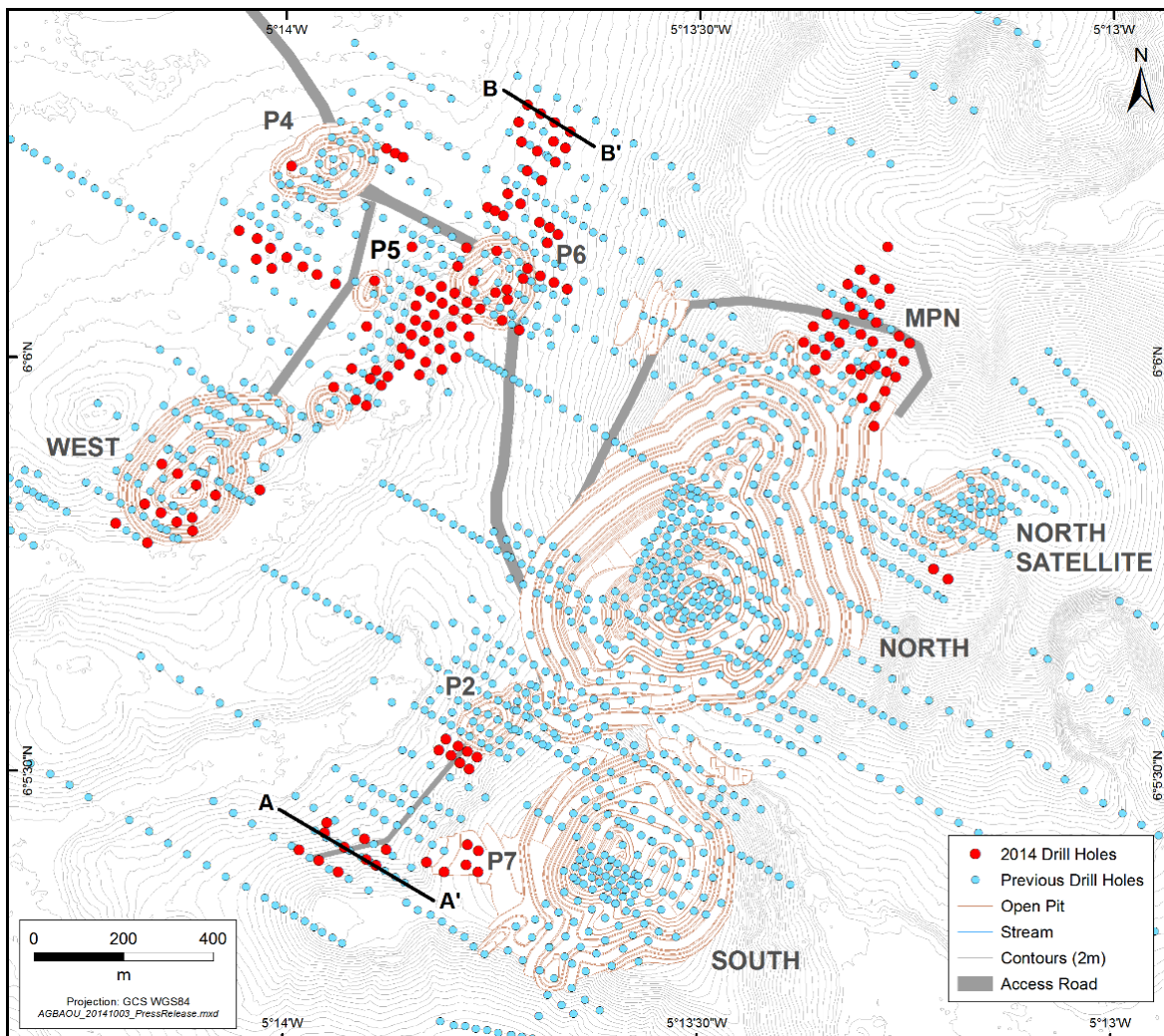


Table 2: Agbaou 2014 Drilling Areas

	Deposit Area	Number of New Holes	Additional Strike (m)	Approximate True Width (m)	Depth tested (m)
North Pit Extensions	MPN	35	200	6-12	75
	P2	18	400	8-50	100
	P7	6	100	5-10	50
West Pit Extensions	P4	11	100	5-10	50
	P5	3	50	15-25	75
	P6	70	550	6-12	100

Qualified Persons

K. Kirk Woodman, P.Geo., GM Exploration – Burkina Faso, Cote d'Ivoire and Mali, is the Qualified Person overseeing Endeavour's exploration projects in West Africa and has reviewed and approved this press release.

All sample preparations and standard 50-gram gold fire assays were performed by Bureau Veritas Laboratories, Abidjan, Cote d'Ivoire. Endeavour consistently employs a rigorous quality control and assurance program comprising regular insertion of certified reference standards, blanks and duplicates.

About Endeavour Mining Corporation

Endeavour is a Canadian-based gold mining company producing over 450,000 ounces per year from four mines in West Africa. Endeavour is focused on effectively managing its existing assets to maximize cash flow as well as pursuing organic and strategic growth opportunities that benefit from its management and operational expertise.

On behalf of Endeavour Mining Corporation

Neil Woodyer
Chief Executive Officer

This news release contains "forward-looking statements" including but not limited to, statements with respect to Endeavour's plans and operating performance, the estimation of mineral reserves and resources, the timing and amount of estimated future production, costs of future production, future capital expenditures, and the success of exploration activities. Generally, these forward-looking statements can be identified by the use of forward-looking terminology such as "expects", "expected", "budgeted", "forecasts" and "anticipates". Forward-looking statements, while based on management's best estimates and assumptions, are subject to risks and uncertainties that may cause actual results to be materially different from those expressed or implied by such forward-looking statements, including but not limited to: risks related to the successful integration of acquisitions; risks related to international operations; risks related to general economic conditions and credit availability, actual results of current exploration activities, unanticipated reclamation expenses; changes in project parameters as plans continue to be refined; fluctuations in prices of metals including gold; fluctuations in foreign currency exchange rates, increases in market prices of mining consumables, possible variations in ore reserves, grade or recovery rates; failure of plant, equipment or processes to operate as anticipated; accidents, labour disputes, title disputes, claims and limitations on insurance coverage and other risks of the mining industry; delays in the completion of development or construction activities, changes in national and local government regulation of mining operations, tax rules and regulations, and political and economic developments in countries in which Endeavour operates. Although Endeavour has attempted to identify important factors that could cause actual results to differ materially from those contained in forward-looking statements, there may be other factors that cause results not to be as anticipated, estimated or intended. There can be no assurance that such statements will prove to be accurate, as actual results and future events could differ materially from those anticipated in such statements. Accordingly, readers should not place undue reliance on forward-looking statements. Please refer to Endeavour's most recent Annual Information Form filed under its profile at www.sedar.com for further information respecting the risks affecting Endeavour and its business.

Appendix

Agbaou 2014 Drilling Highlights

Deposit	Hole ID	UTM E	UTM N	From (m)	To (m)	Length (m)	True Width (m)	Grade (g/t Au)	Final Depth (m)
MPN	AGBRC1734	254117	674681	49	54	5	4.0	3.9	102
	including			50	51	1	0.8	15.3	
	AGBRC1735	254145	674663	72	78	6	4.8	1.7	126
	including			73	74	1	0.8	5.5	
	AGBRC1744	254091	674747	0	11	11	8.8	1.7	96
	including			9	10	1	0.8	12.0	
	AGBRC1745	254114	674734	20	30	10	8.0	5.0	108
	including			21	25	4	3.2	11.7	
	AGBRC1746	254168	674697	68	74	6	4.8	3.4	126
	including			69	70	1	0.8	8.6	
	AGBRC1749	254210	674764	57	66	9	7.2	2.3	78
	including			58	60	2	1.6	6.3	
	AGBRC1751	254066	674805	71	74	3	2.4	4.9	90
	including			71	72	1	0.8	8.1	
	AGBRC1753	254171	674740	46	51	5	4.0	3.8	102
	including			47	48	1	0.8	13.2	
	AGBRC1756	254077	674846	44	53	9	7.2	3.0	108
	including			47	50	3	2.4	6.0	
	AGBRC1759	254120	674869	64	70	6	4.8	4.8	84
	including			65	69	4	3.2	6.4	
WP	AGBRC1765	252589	674405	91	99	8	6.4	1.6	120
	including			92	93	1	0.8	9.6	
	AGBRC1777	252591	674513	18	27	9	7.2	2.9	84
	including			18	20	2	1.6	10.2	
	AGBRC1778	252633	674487	66	75	9	7.2	2.2	102
	including			69	72	3	2.4	5.6	
	AGBRC1780	252623	674415	100	109	9	7.2	3.0	126
	including			101	102	1	0.8	13.7	
	AGBRC1796	252988	674677	24	31	7	5.6	3.5	80
	including			24	25	1	0.8	8.2	
	AGBRC1797	253012	674665	28	45	17	13.6	1.7	96
	including			40	42	2	1.6	6.7	
P2	AGBRC1804	253008	673699	47	53	6	4.8	3.5	100
	including			48	50	2	1.6	7.7	
	AGBRC1805	253056	673675	70	75	5	4.0	3.4	126
	including			72	74	2	1.6	7.5	
	AGBRC1837	252963	673680	1	78	77	Unknown	8.6	86
	including			53	58	5	Unknown	22.1	
	AGBRC1850	253216	673905	11	17	6	4.8	4.4	56
	including			12	13	1	0.8	11.4	
	AGBRC1852	253011	673653	76	90	14	11.2	3.0	108

Deposit	Hole ID	UTM_E	UTM_N	From (m)	To (m)	Length (m)	True Width (m)	Grade (g/t Au)	Final Depth (m)
	including			79	80	1	0.8	10.0	
	AGBRC1853	253033	673640	115	120	5	4.0	3.4	140
	including			116	117	1	0.8	7.6	
	AGBRC1854	252918	673712	0	27	27	Unknown	7.2	90
	including			9	13	4	Unknown	34.7	
P4	AGBRC1791	252798	675015	0	13	13	10.4	2.9	84
	including			8	12	4	3.2	6.4	
	and			68	74	6	4.8	7.5	
	including			72	73	1	0.8	13.4	
	AGBRC1792	252834	674995	39	46	7	5.6	2.0	84
	including			44	45	1	0.8	4.6	
	and			77	*84	7	5.6	32.5	
	including			79	80	1	0.8	177.4	
	AGBRC1793	252870	674975	33	38	5	4.0	3.0	84
	including			36	37	1	0.8	8.8	
	and			71	81	10	8.0	4.4	
	including			74	78	4	3.2	10.4	
	AGBRC1794	252902	674957	46	53	7	5.6	6.3	105
	including			47	49	2	1.6	9.0	
	AGBRC1815	252845	675199	5	10	5	4.0	2.3	54
	including			7	8	1	0.8	8.7	
	AGBRC1891	252938	674936	51	60	9	7.2	4.2	79
	including			51	54	3	2.4	11.9	
	and			64	72	8	6.4	2.7	
	including			64	66	2	1.6	9.5	
	AGBRC1892	252733	675008	65	71	6	4.8	3.3	114
	including			66	67	1	0.8	5.6	
	AGBRC1893	252765	674991	74	85	11	8.8	3.7	96
	including			74	78	4	3.2	7.1	
	AGBRC1894	252797	674972	52	58	6	4.8	4.6	102
	including			53	55	2	1.6	12.1	
	and			81	90	9	7.2	4.2	
	including			86	87	1	0.8	19.8	
	AGBRC1895	252836	674951	87	98	11	8.8	8.2	102
	including			88	89	1	0.8	21.1	
P6	AGBRC1781	253325	674923	78	90	12	9.6	4.4	138
	including			80	88	8	6.4	5.9	
	AGBRC1786	253251	674943	12	29	17	13.6	3.3	102
	including			21	23	2	1.6	15.1	
	AGBRC1787	253300	674916	68	80	12	9.6	4.0	124
	including			69	73	4	3.2	6.4	
	and			75	77	2	1.6	6.9	
	AGBRC1828	253429	675253	57	69	12	9.6	1.3	102
	including			66	68	2	1.6	4.1	
	AGBRC1806	253416	675027	48	54	6	4.8	3.3	78
	including			48	49	1	0.8	8.7	
	AGBRC1816	253175	674792	39	52	13	10.4	2.0	110

Deposit	Hole ID	UTM_E	UTM_N	From (m)	To (m)	Length (m)	True Width (m)	Grade (g/t Au)	Final Depth (m)
	including			49	51	2	1.6	7.2	
	AGBRC1825	253393	675233	40	47	7	5.6	2.7	78
	including			42	43	1	0.8	6.4	
	and			69	75	6	4.8	5.1	
	including			69	72	3	2.4	9.1	
	AGBRC1826	253433	675208	71	91	20	16.0	1.3	96
	including			71	72	1	0.8	6.5	
	AGBRC1830	253327	674901	30	44	14	11.2	2.6	158
	including			38	39	1	0.8	11.3	
	and			105	111	6	4.8	4.1	
	including			109	110	1	0.8	7.6	
	AGBRC1834	253430	674939	77	84	7	5.6	2.2	108
	including			78	79	1	0.8	12.8	
	AGBRC1843	253432	675296	32	51	19	15.2	4.8	102
	including			40	42	2	1.6	14.8	
	AGBRC1868	253236	674895	44	51	7	5.6	3.1	114
	including			45	48	3	2.4	5.8	
	AGBRC1869	253265	674881	71	79	8	6.4	4.6	132
	including			71	76	5	4.0	7.1	
P7	AGBRC1855	253185	673625	14	21	7	5.6	3.4	102
	including			16	19	3	2.4	5.3	
	AGBRC1856	253234	673641	114	118	4	3.2	5.0	180
	including			116	117	1	0.8	13.9	
	and			164	177	13	10.4	1.6	180
	including			171	173	2	1.6	6.4	
	AGBRC1859	253237	673686	16	25	9	7.2	2.8	54
	including			22	24	2	1.6	7.0	

**Intercept continues to the End of Hole*

