

The background of the slide is a photograph of a rural landscape. In the foreground, a grassy field with several cows grazing is visible. In the middle ground, there is a dense line of trees. In the background, a large, forested mountain rises under a clear sky. The text "Annual General Meeting" and "Exploration Update" is overlaid on the lower part of the image in a large, white, sans-serif font.

# Annual General Meeting Exploration Update

November 20<sup>th</sup> 2014

## **DISCLAIMER.**

This document was prepared by SML Corporation Limited. This document contains forward-looking statements that involve risks and uncertainties. These forward-looking statements are not guarantees of SML Corporation future performance and involve a number of risks and uncertainties that may cause actual results to differ materially from the results discussed in these statements. This document only contains information required for a preliminary evaluation of the Company and in particular only discloses information by way of summary within the knowledge of the Company and its Directors. A reader should seek his own independent professional advice in relation to the technical, financial, taxation, legal and commercial matters relating to any potential investment in SML Corporation Limited. Other than to the extent required by law (and only to that extent) the Company and its officers, employees and professional advisers make no representation, guarantee or warranty (expressed or implied) as to, and assume no responsibility or liability for, the contents of this presentation.

SML Corporation is not aware of any new information included in this market announcement and, in the case of estimates of mineral resources, that all market assumptions and technical parameters under-pinning the estimates in the market announcement continue to apply and have not materially changed.

In accordance with the ASX listing rules, the Directors note that the mineral resource estimation completed in June 2013 was compliant with the JORC Code (2012) guidelines. However, it is uncertain whether further exploration work will result in the determination of ore reserves based on mineral resources.

The geological information contained within this presentation was compiled by Mr Peter de Vries and Mr Murray Hutton. Mr de Vries is a member of the Australasian Institute of Mining and Metallurgy and is a Competent Person as defined by the 2012 JORC Code, having more than five years' experience that is relevant to the style of mineralisation and type of deposit described in this report, and to the activity for which he is accepting responsibility. Mr Hutton is a consultant working for GJN Enterprises Pty Ltd, trading as Geos Mining, and was engaged by SML Corporation Limited to prepare the Mineral Resources Estimation for the Mount Wills Gold Project, Victoria, he is a member of the Australian Institute of Geoscientists and is a Competent Person as defined by the 2012 JORC Code, having more than five years' experience that is relevant to the style of mineralisation and type of deposit described in this report, and to the activity for which he is accepting responsibility for. Both Mr de Vries and Mr Hutton consents to the publishing of the information in this report in the form and context in which it appears.



# Summary

- ❖ Key Licenses renewed and secure for medium term.
- ❖ Confirmation of Centre Country Link Structure.
- ❖ Plans to Seek Approval to Recommence Limited Production at Glen Wills.
- ❖ Relinquishment and Reduction of Non-core Areas
- ❖ Successful Testing of Geophysics at Omeo.





# Exploration Objectives

- ❖ To Locate Sufficient Gold Resources to Support New Gold Production.
- ❖ To Operate with Minimal Environmental Impact.
- ❖ To Enhance Returns to Shareholders
- ❖ To Rehabilitate Sites After Production for a Sustainable Future.

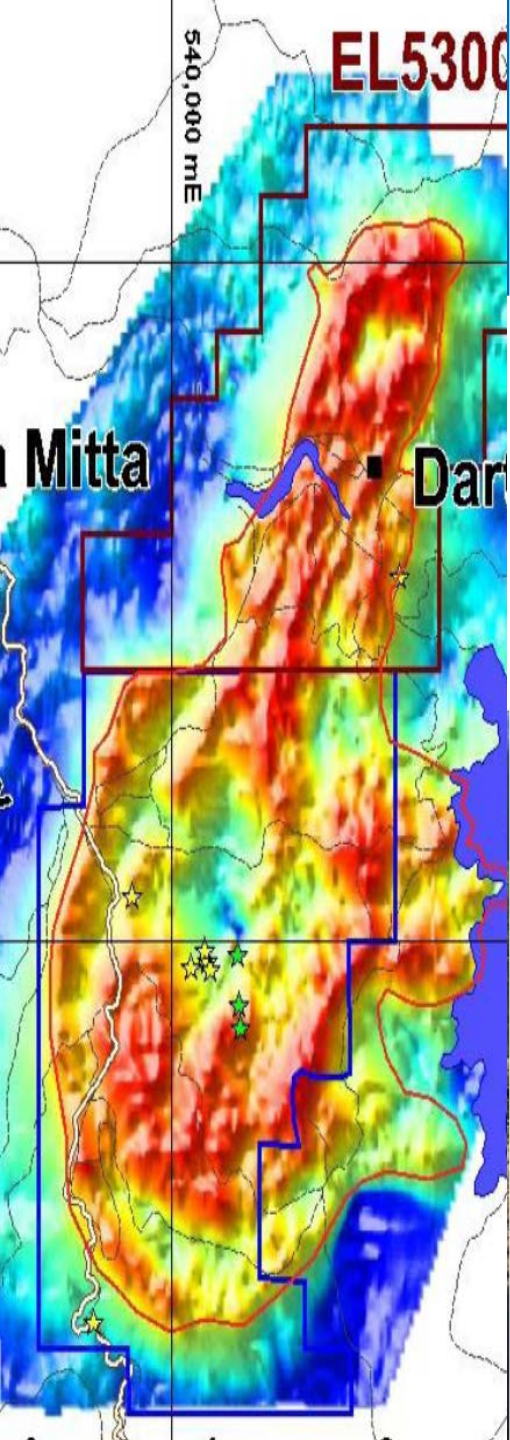


# Tenement Strategy – 2014.

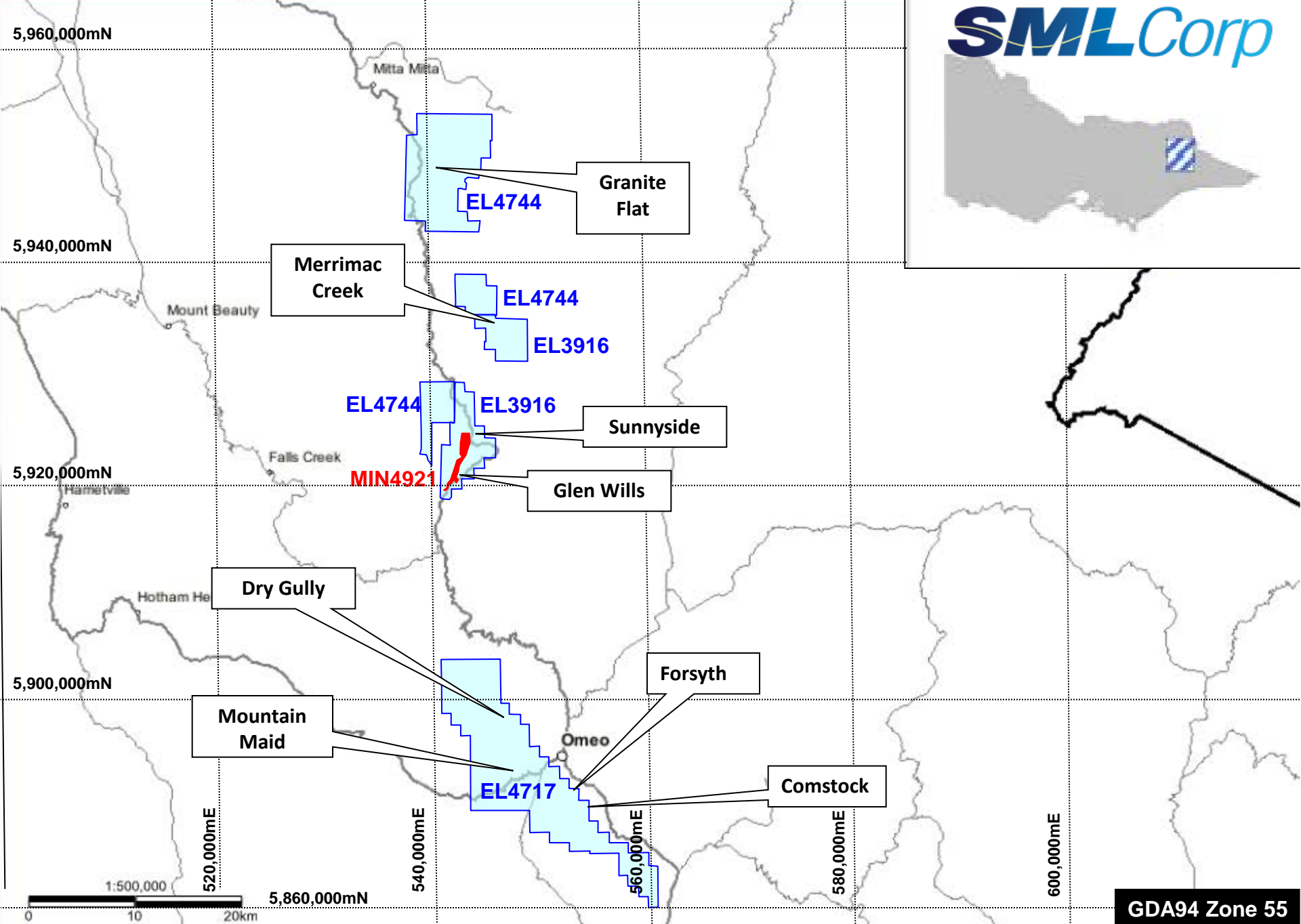
During 2014 SML Corp continued to rationalise its land holdings with reductions on a number of existing exploration Licenses and dropping of EL5300.

## Testing and discarding:

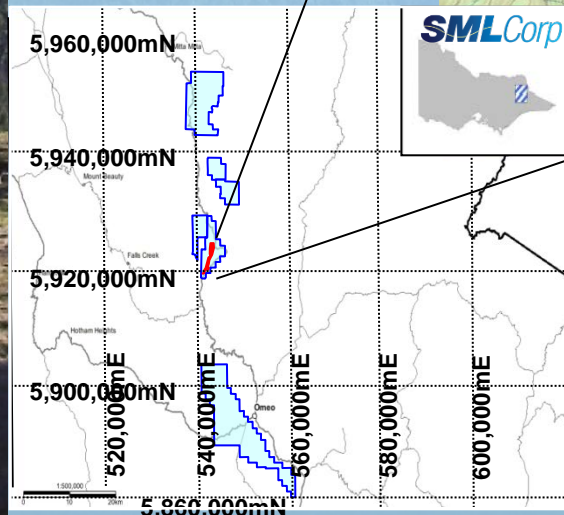
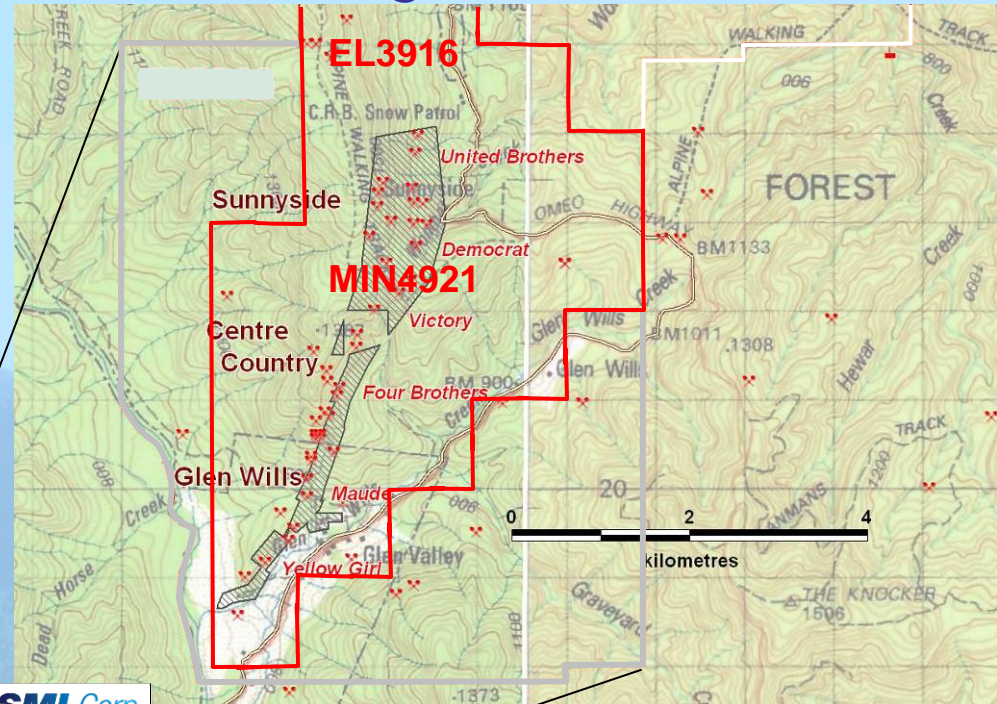
❖ 765km <sup>2</sup>	-	2011
❖ 706km <sup>2</sup>	-	2021
❖ 608km <sup>2</sup>	-	2013
❖ 295km <sup>2</sup>	-	2014







# Glen Wills Gold Project



- 47km<sup>2</sup> Exploration Licence  
-EL3916
- 2.4km<sup>2</sup> granted Mining Lease  
- MIN4921

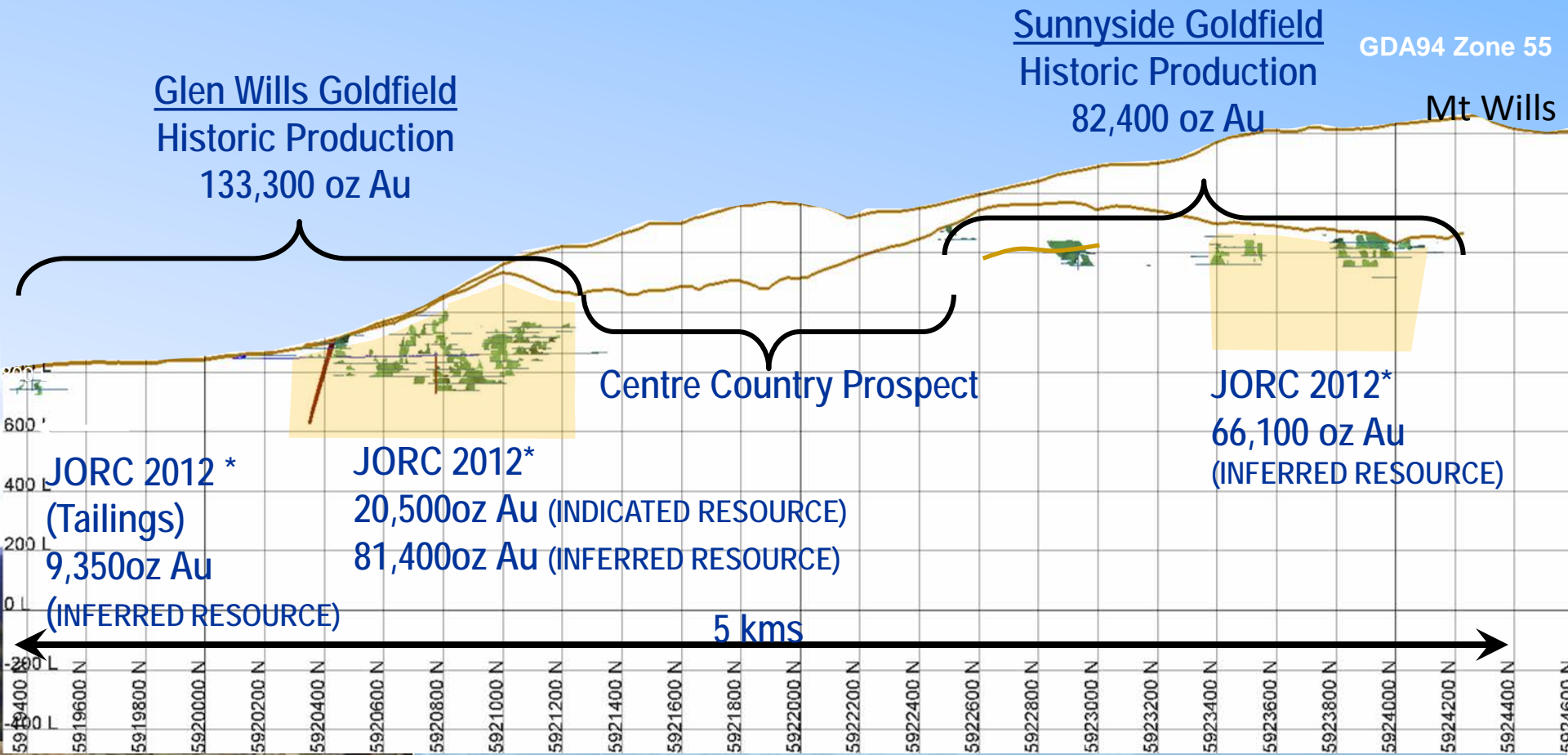


# 2014 Glen Wills

- ❖ MIN4921 Renewed for Further 5 years – 2019.
- ❖ Preparation Commenced on Development of Work Plan to Commence Treatment of Surface Material.
- ❖ Confirmation of Centre Country Link Structure.







Total Historic Production	- 215,700 oz Au
JORC Mineral Resource (Dec - 2012) (Indicated & Inferred)	- 168,000 oz Au
JORC Mineral Resource (Tailings) (Inferred Resource)	- 9,350 oz Au
Endowment to Date (Past & Present)	- 392,860 oz Au

## Glen Wills Goldfield

Historic Production - 133,300 oz Au  
 JORC Resource - 101,900 oz Au\*  
 (Indicated Resource 107kt @ 6.0g/t Au - 20,500 oz)  
 (Inferred Resource 387kt @ 6.5g/t Au - 81,400 oz)  
 Past & Present Endowment - 235,200 oz Au

Mt Wills

## Sunnyside Goldfield

Historic Production - 82,400 oz Au  
 JORC Resource - 66,100 oz Au\*  
 (Inferred Resource 215Kt @ 9.5g/t Au - 66,100 oz)  
 Past & Present Endowment - 148,500 oz Au

### LEGEND

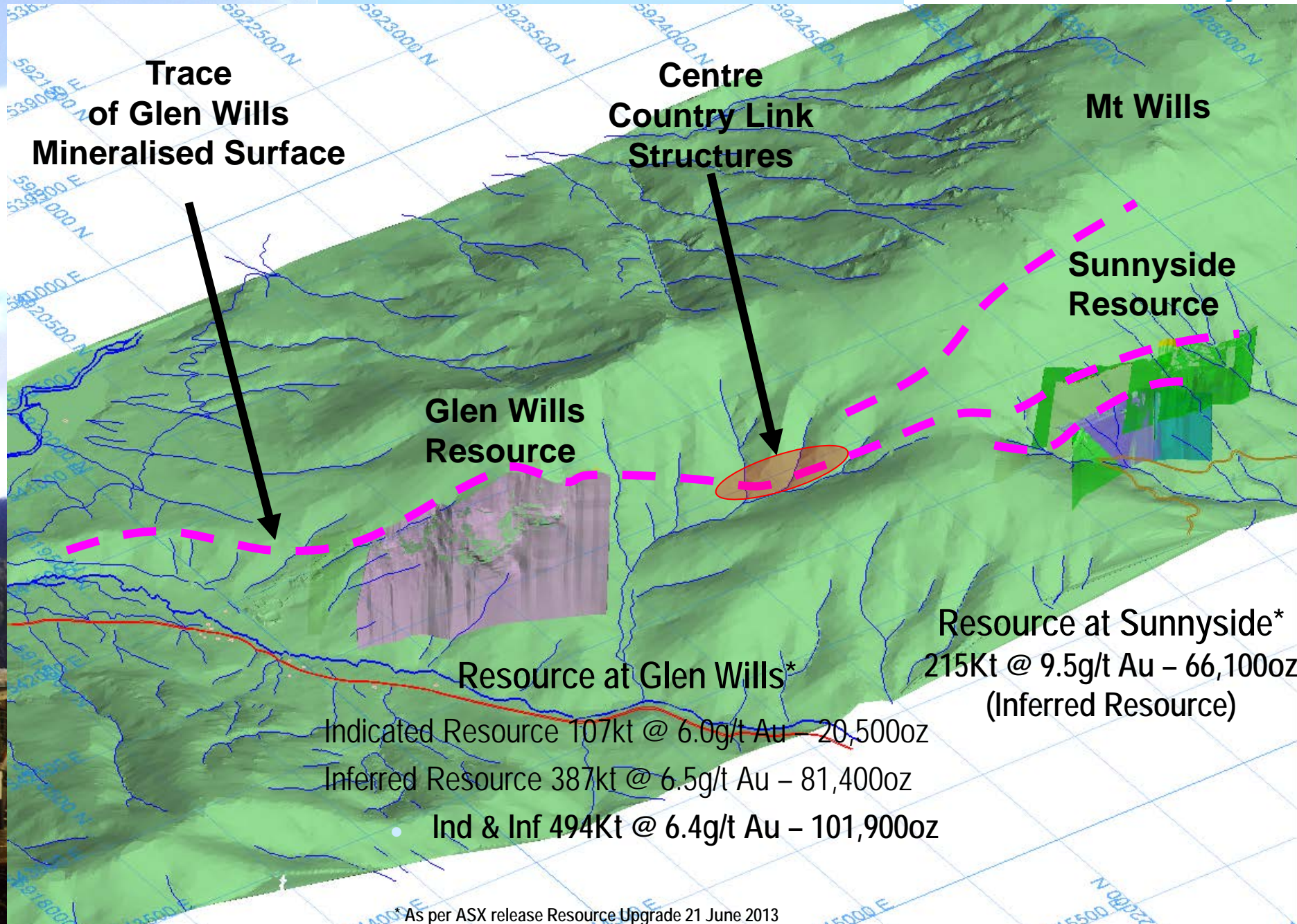
- <1.00g/t Au
- 1.00 – 5.00 g/t Au
- >5.00 g/t Au
- Historic Levels
- Historic Workings



**Current**  
 Combined Past Historical and Current Insitu  
 Endowment (incl. tailings) 392,860 oz Gold.

\* As per ASX release Resource Upgrade 21 June 2013





**Trace  
of Glen Wills  
Mineralised Surface**

**Centre  
Country Link  
Structures**

**Mt Wills**

**Sunnyside  
Resource**

**Glen Wills  
Resource**

**Resource at Glen Wills\***

Indicated Resource 107kt @ 6.0g/t Au – 20,500oz

Inferred Resource 387kt @ 6.5g/t Au – 81,400oz

• Ind & Inf 494Kt @ 6.4g/t Au – 101,900oz

**Resource at Sunnyside\***  
215Kt @ 9.5g/t Au – 66,100oz  
(Inferred Resource)



# 2014 Centre Country

❖ Four Diamond Drill Holes completed for 2,328.40 metres of Drilling.

❖ Better intersections include\*:

❖ *CCDH003*

❖ 0.10m @ 40.74 g/t Au & 20.34 g/t Ag from 131.95m

❖ 0.40m @ 12.54 g/t Au & 20.69 g/t Ag from 162.60m

❖ *CCDH004*

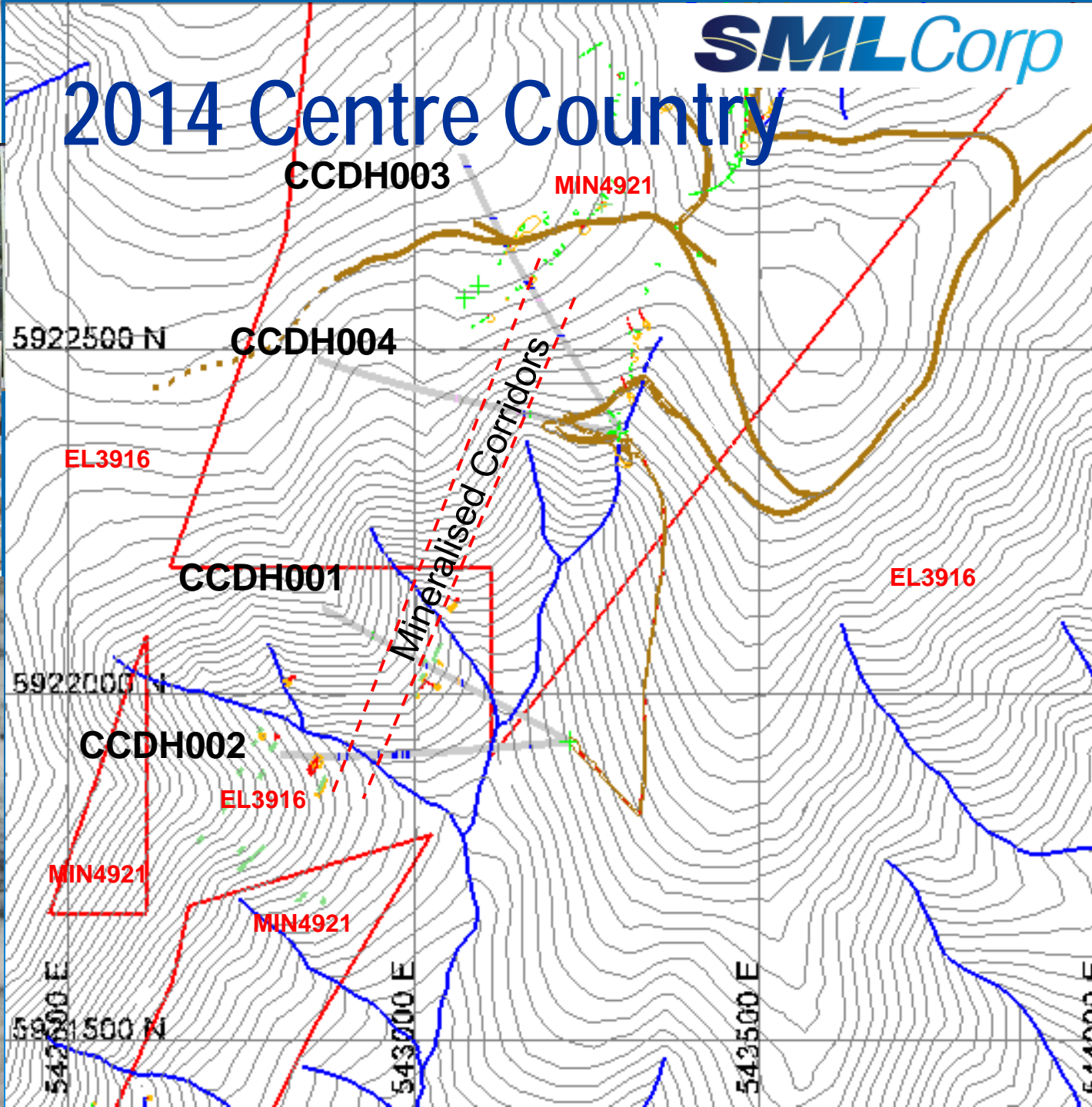
❖ 2.00m @ 2.00 g/t Au & 3.78 g/t Ag from 190.50m

❖ 0.95m @ 3.54 g/t Au & 1.87 g/t Ag from 166.35m

\* As per ASX release Quarterly Activities and Cash Flow Report 30 January 2014



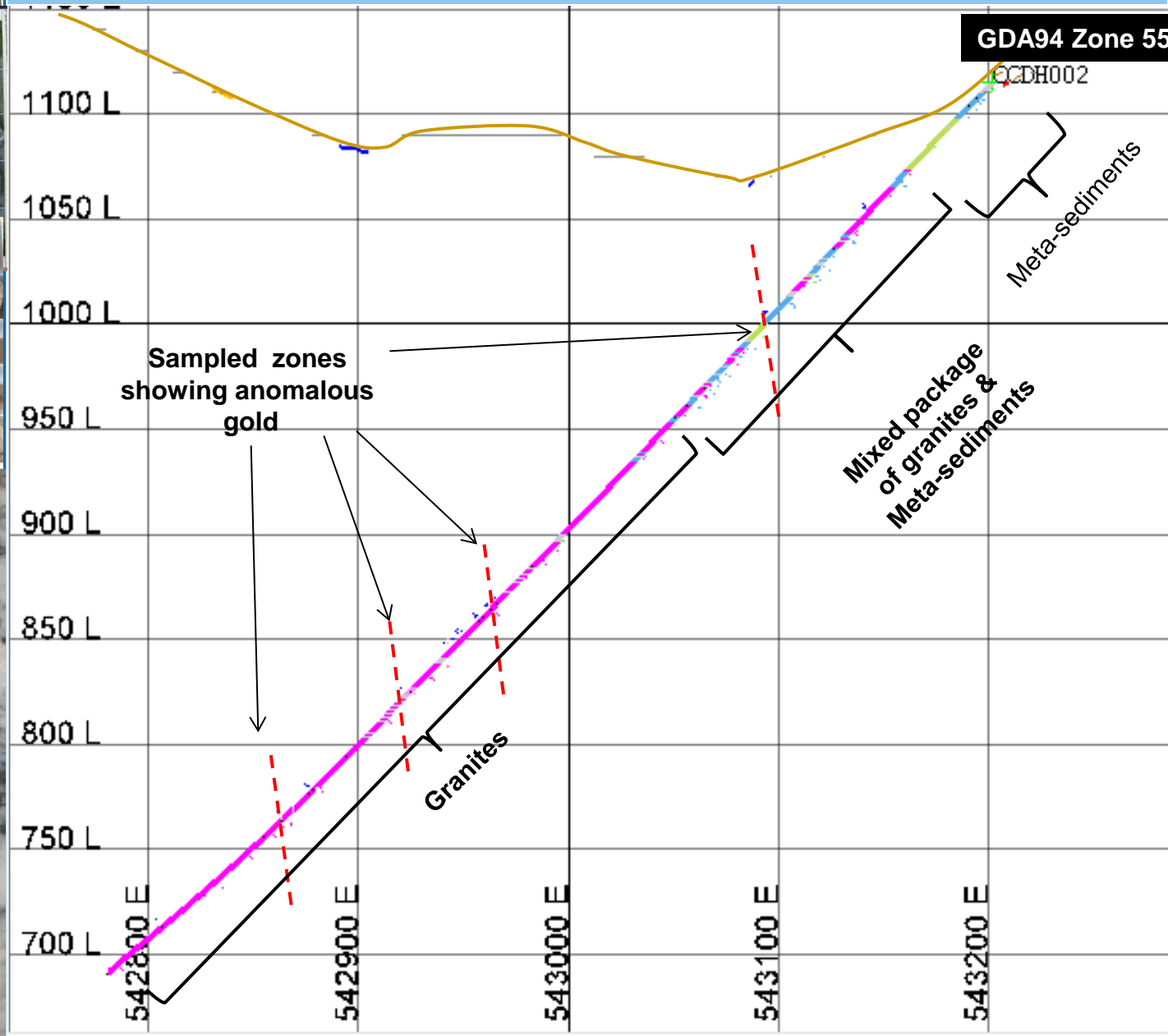






# CCDH002

**SML**Corp

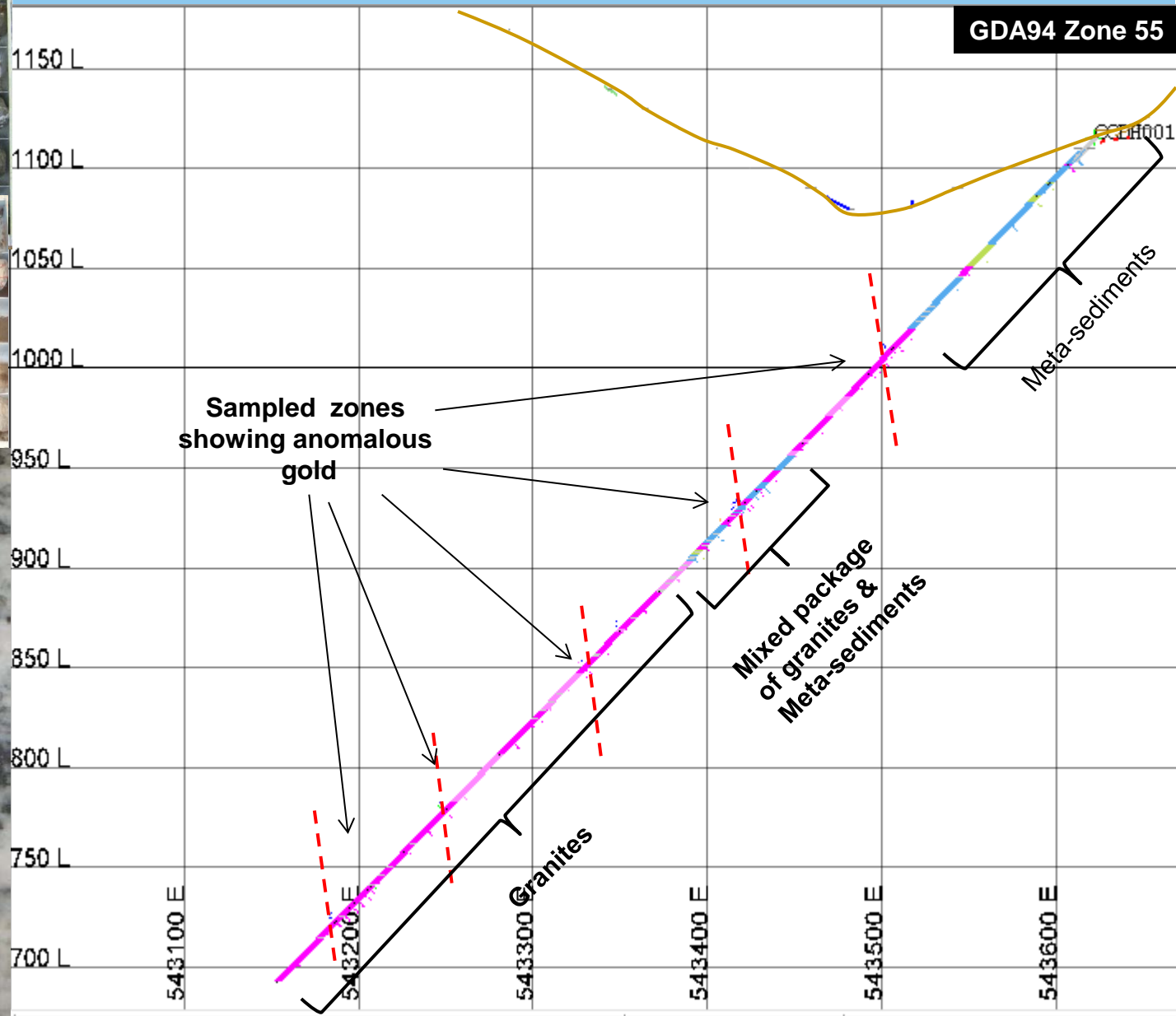






# CCDH001

**SML**Corp

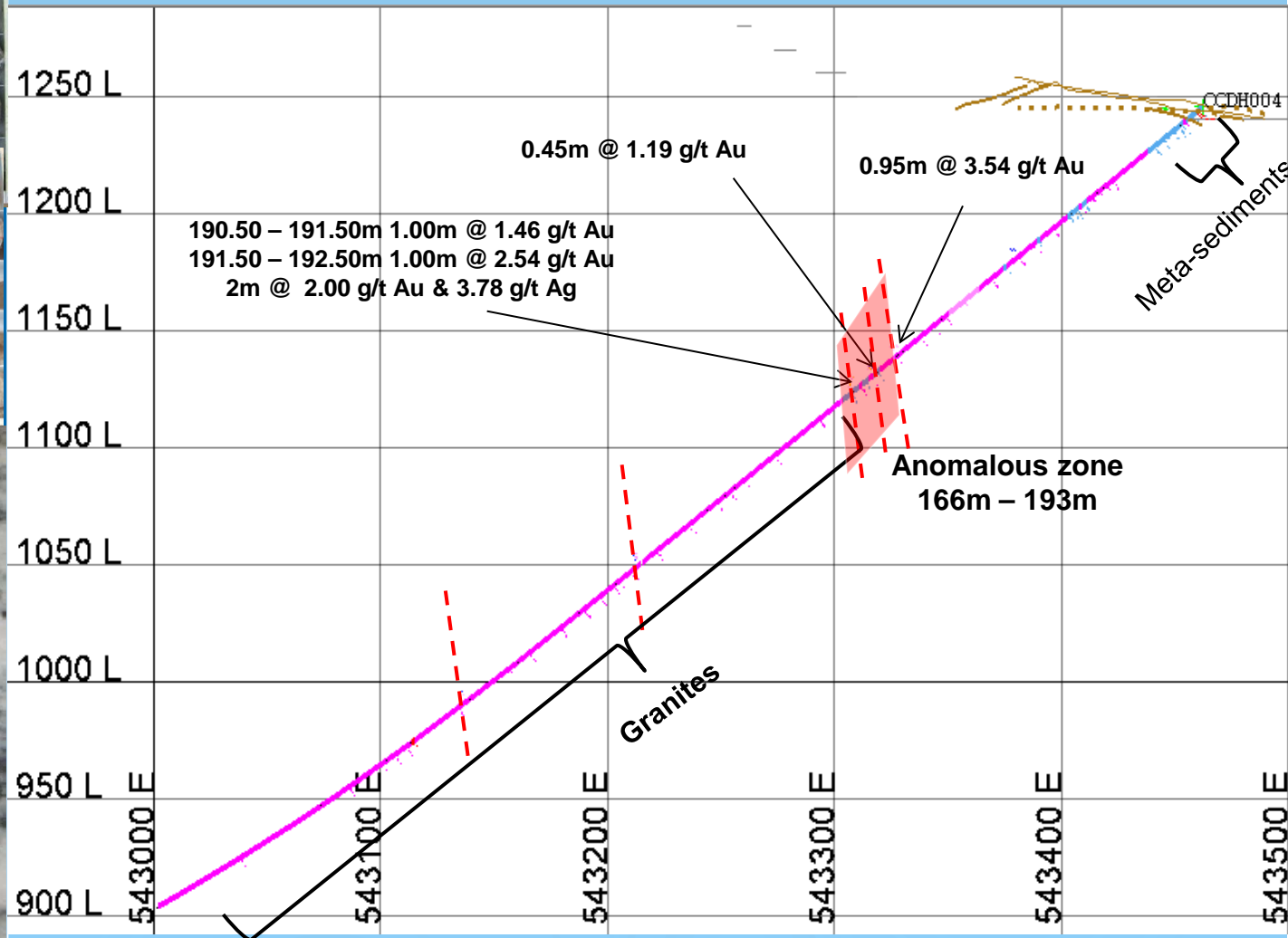




# CCDH004

**SML**Corp

GDA94 Zone 55



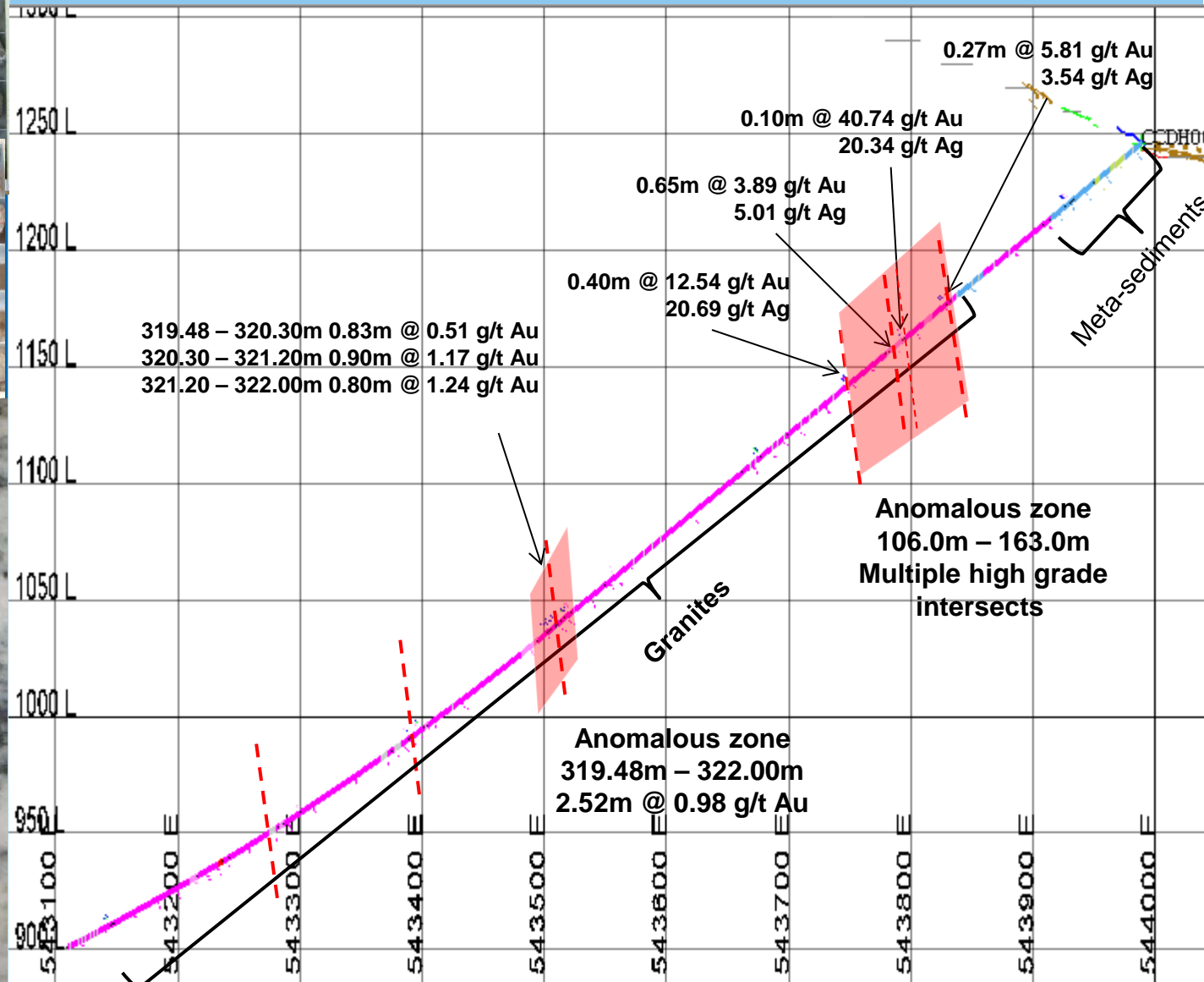




# CCDH003

**SML Corp**

**GDA94 Zone 55**



## EL3916 – Mt Wills

- ❖ Renewed to 13 May 2016 – 47 sq km
- ❖ Significant Centre Country Drilling within EL
- ❖ Future Investigations into Prospects:
  - ❖ Anaconda
  - ❖ Vienna Soil Anomaly
- ❖ Merrimac Prospect – Nil Activity 2014
  - ❖ Soil and Stream Sediment Anomalies
  - ❖ Drilling Program Approved - Review

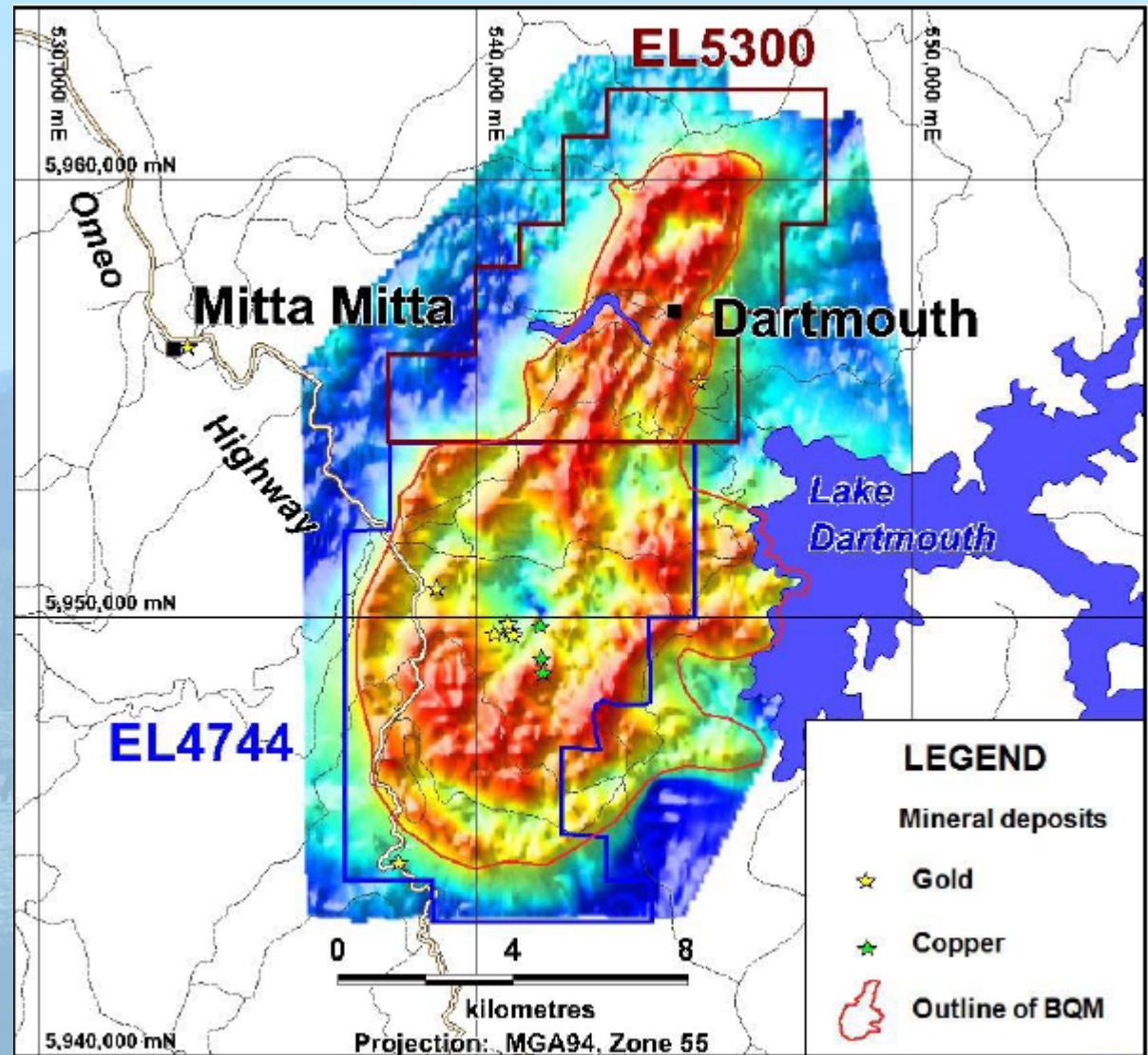


# EL4744 – Granite Flat

- ❖ Granted to Nov 28 2014 – 109 sq km
  - ❖ Renewal Application Submitted.
- ❖ Reduction Application down to 51sq km
- ❖ Granite Flat Prospect
  - ❖ Previous drilling
  - ❖ Gold + Copper Potential
  - ❖ Untested Anomalies



# EL4744 – Granite Flat





# Granite Flat Mineralisation

- ❖ Hosted by Multi-phase Intrusions
- ❖ Structural Controls.
- ❖ Multiple Lines of Narrow Veins & Shears
- ❖ Pyrite + Copper Sulphides, Minor Galena, Sphalerite & Arsenopyrite



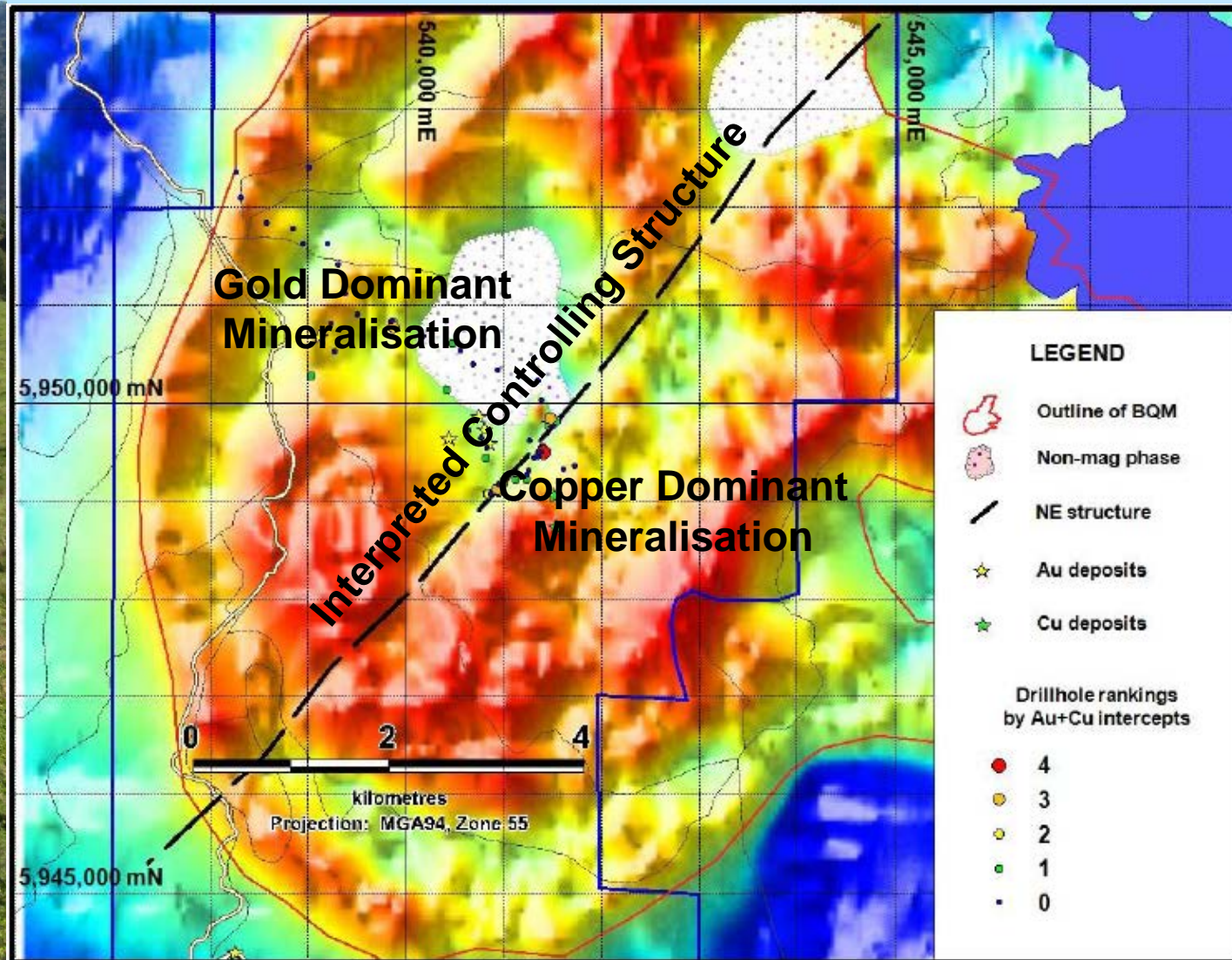
# EL4744 – Granite Flat

- ❖ Re-processing of Geophysics Data has Outlined Structural Targets for Follow-up Review and Possible Drill Testing.





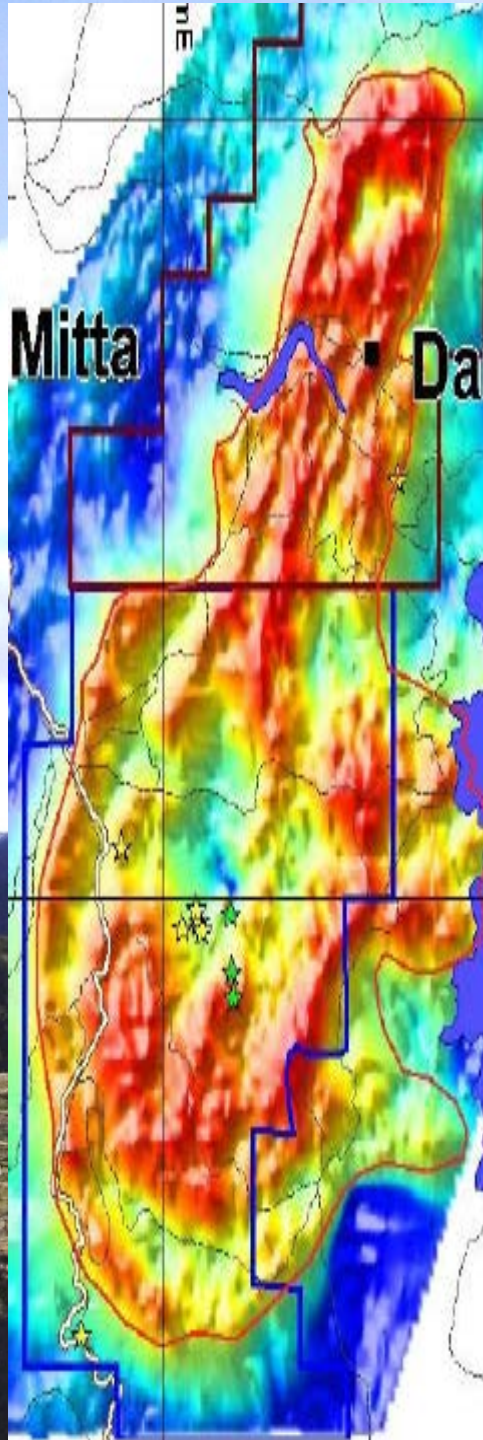
# Granite Flat - Magnetics





# EL5300 - Banimboola

- ❖ Granted April 2016 – 39 sq km
- ❖ Stream Sediment Regional Sampling & Infill Sampling Failed to Detect Significant Anomalous Responses.
- ❖ Licence Surrendered.

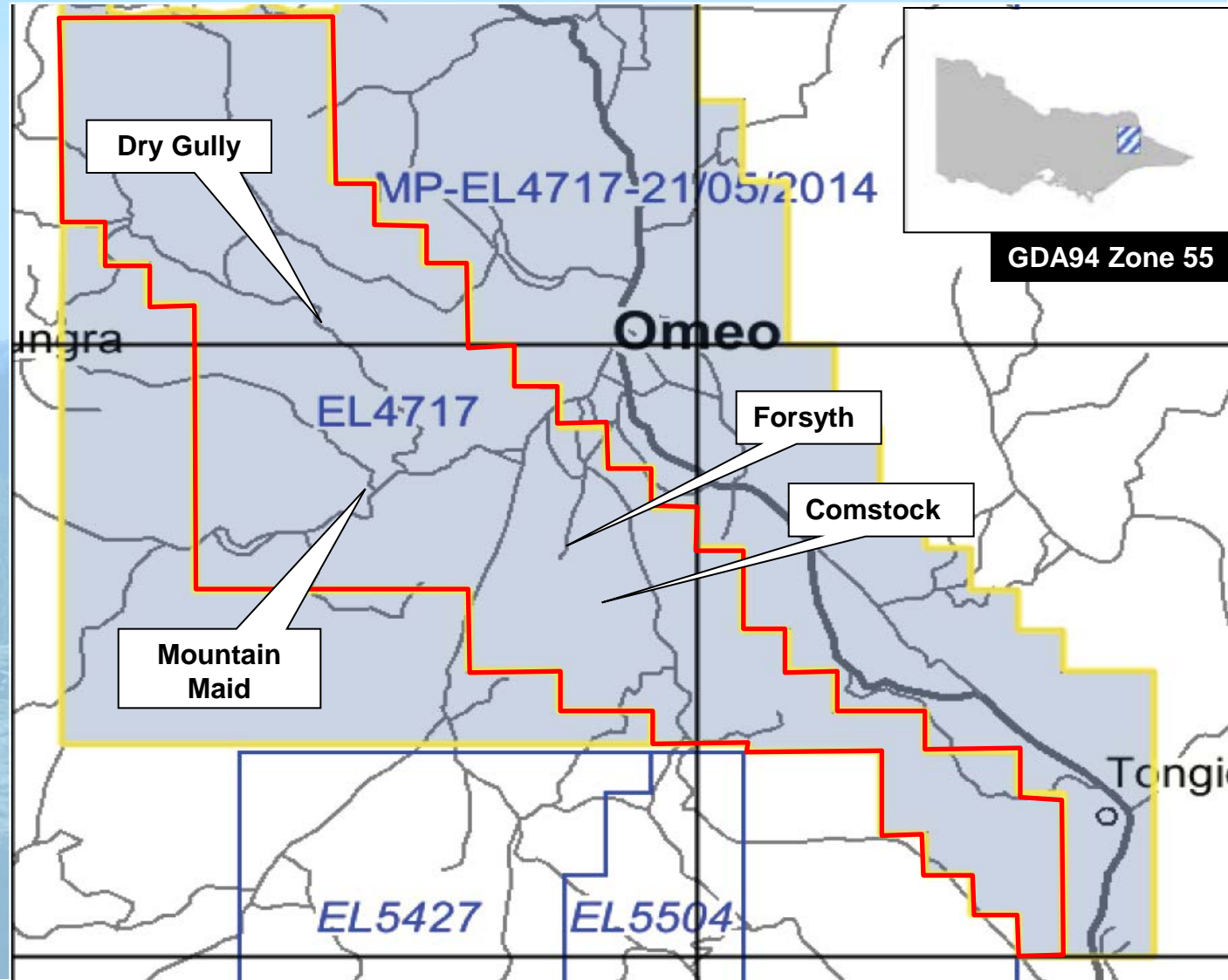




# EL4717 - Omeo

- ❖ Granted to 2019 – 274sq km reduction to 146sq km in total.
- ❖ Omeo / Ensay Shear Zone
  - ❖ Historical gold and silver workings
  - ❖ High-grade drilling targets
- ❖ Four Known Groups of Mineralisation.
  - ❖ Forsyth's
  - ❖ Comstock
  - ❖ Mountain Maid – Helvetia
  - ❖ Dry Gully

# EL4717 - Omeo





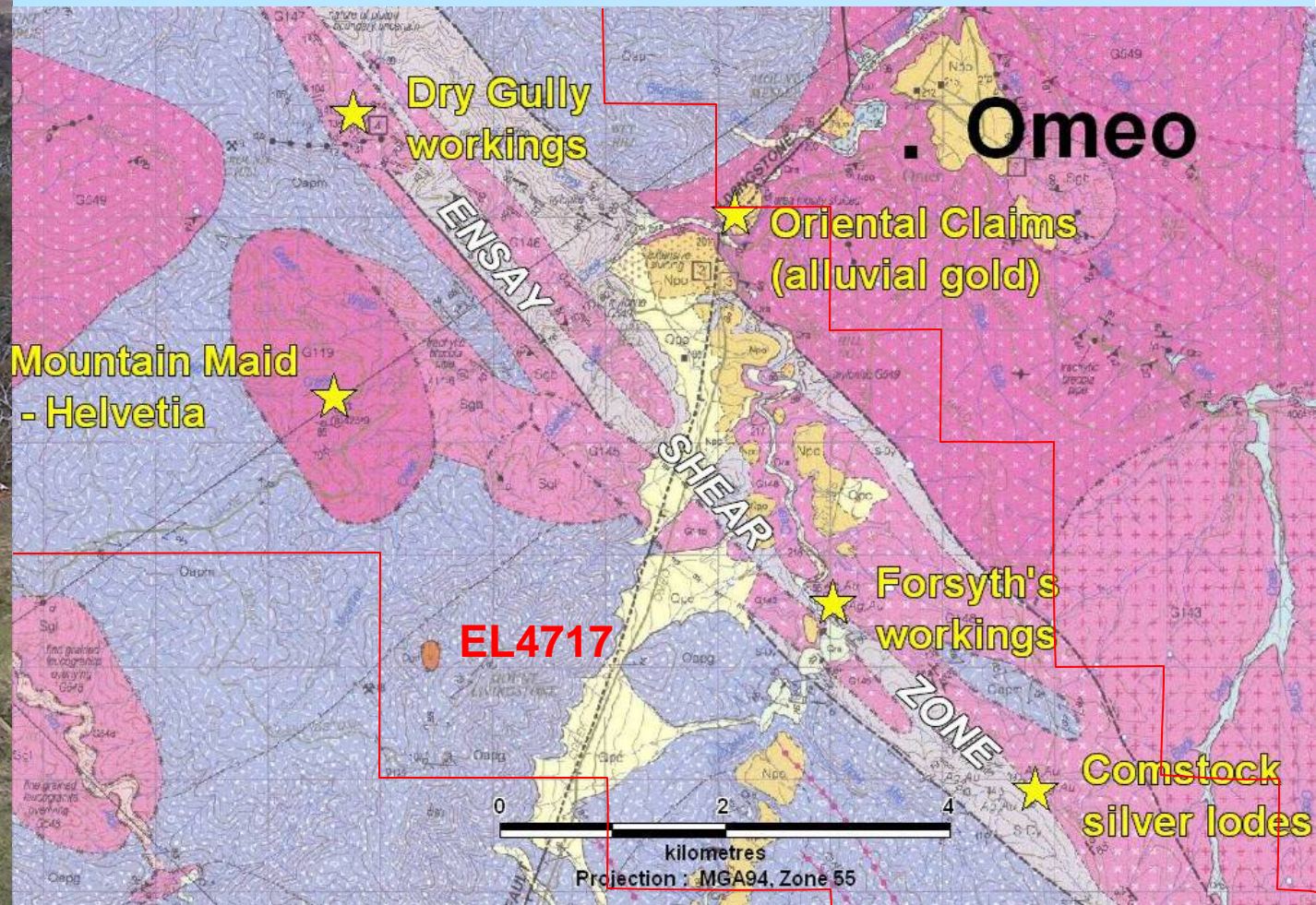
# EL4717 - Omeo

## High Grade Mineralisation.

- ❖ En echelon veins associated with Ensay Shear Zone.
- ❖ Quartz veins & disseminated pyrite in granites.
- ❖ Historical grades 10 – 100 g/t Au (+/- Ag)
- ❖ Alluvial workings produced >2,300 kg Au



# EL4717 – Omeo/Ensay Shear Zone



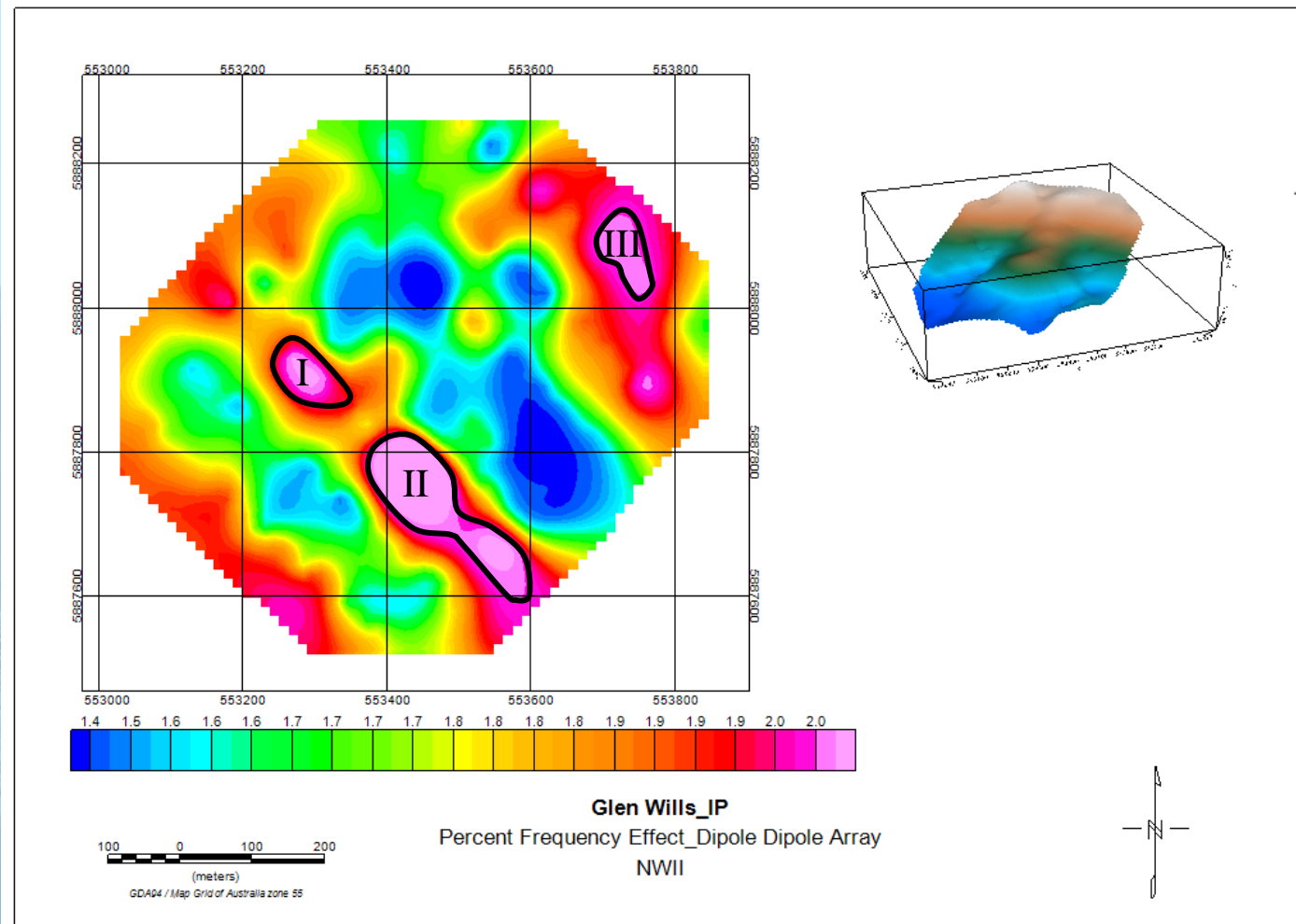


# EL4717 – Omeo Geophysics

- ❖ 15th April - 11th May 2014.
- ❖ Dipole-Dipole IP Sounding and Scanning.
  - ❖ (Line spacing: 100m; Station Separation Distance: 20m)
- ❖ Line Survey: 7.22km
- ❖ Dipole-Dipole Multi Polar Distance IP Survey: 6.26km
- ❖ IP Sounding Point: 257

# 2014 - Omeo

## ❖ Geophysical Survey Over Comstock Prospect





# EL4717 - Omeo

## ❖ Future Work

- ❖ Comstock : Three (3) Targets Identified for Possible Drill Testing.
- ❖ Forsyth: Geophysical Survey & Follow-up Drilling.
- ❖ Mountain Maid : 600m (4 holes)
  - ❖ Changes to MRSDIR (2014) legislation may reduce or negate need for vegetation offset

# Summary

- ❖ Tenement Renewals & Reductions – Ongoing
- ❖ MIN4921 - Glen Wills. – Work Plan Preparation.
- ❖ Centre Country – Structural Model Confirmation on MIN4921 & EL3916



# Summary

- ❖ Comstock (EL4717) – Geophysical Targets Identified.
- ❖ Granite Flat (EL4744) – Structural Target Identified.
- ❖ Merrimac (EL3916) – Hold Status.

# 2015 Programme

- ❖ Work Plan Submission for Processing at Glen Wills.
- ❖ Limited Ongoing Drilling at Glen Wills, Sunnyside & Centre Country.
- ❖ Drilling & Geophysics at EL4717 - Omeo.
- ❖ Field Investigations at EL4744 – Granite Flat.
- ❖ Reviews and Acquisitions



Thank you.



**SML**Corp