



Low cost coking coal projects, in development on Asia's doorstep

Corporate Update

October 2015

About Tigers Realm Coal Limited (ASX: TIG)

Tigers Realm Coal Limited ("TIG", "Tigers Realm Coal" or "the Company") is an Australian based resources company. The Company's vision is to build a global coking coal company by rapidly advancing its projects through resource delineation, feasibility studies and mine development to establish profitable operations.

This presentation ("Presentation") has been prepared by Tigers Realm Coal Limited ("Company") and is provided solely for information purposes.

By viewing or attending this Presentation, you agree to be bound by the following conditions:

- This Presentation is not a prospectus or disclosure document and does not constitute or form part of any offer or invitation to sell or issue, or any solicitation of any offer to purchase or subscribe for, any securities or an inducement to enter into any investment activity, nor shall any part or all of this Presentation form the basis of, or be relied on in connection with, any contract or investment decision in relation to any securities.
- The information contained in this Presentation has not been independently verified. The Company does not make any representation or warranty, express or implied, as to the fairness, accuracy, correctness or completeness of the information, opinions and conclusions contained in this Presentation.
- To the maximum extent permitted by law, the Company and its related bodies corporate and affiliates, and their respective directors, officers, employees or agents, disclaim any liability (including, without limitation, any liability arising out of fault or negligence) for any loss or damage arising from any use of the information contained in this Presentation, including any error or omission, or otherwise arising in connection with it.
- The information in this Presentation is subject to change without notice. Subject to any obligations under applicable law, the Company does not undertake any obligation to update any information in this Presentation.

Competent Persons Statement

The information compiled in this announcement relating to exploration results, exploration targets or Coal Resources at Amaam and Amaam North is based on information provided by TIG and compiled by Neil Biggs, who is a member of the Australasian Institute of Mining and Metallurgy and who is employed by Resolve Coal Pty Ltd, and has sufficient experience which is relevant to the style of mineralization and type of deposit under consideration and to the activity he is undertaking to qualify as a Competent Person as defined in the JORC Code. Neil Biggs consents to the inclusion in the announcement of the matters based on his information in the form and context which it appears.

Note A – Tigers Realm Coal's interests in the Amaam Coking Coal Project

Amaam tenement: TIG's current beneficial ownership is 80% of Eastshore Coal Holding Limited ("Eastshore"), a company incorporated in Cyprus which is the sole shareholder of CJSC Northern Pacific Coal Company, a Russian company, which holds the Amaam tenement. Bering Coal Investments Limited, a company incorporated in Cyprus, holds the other 20% of Eastshore. TIG will fund all project expenditure in the Amaam tenement until a bankable feasibility study is completed as agreed by the Eastshore shareholders. After completion of a bankable feasibility study each Eastshore shareholder is required to contribute to further project expenditure on a pro-rata basis. Siberian Tigers International Corporation, a company incorporated in Cyprus, is entitled to receive a royalty of 3% gross sales revenue from coal produced from within the Amaam licence.

Amaam North tenement: TIG has 80% beneficial ownership of Rosmiro Investments Limited ("Rosmiro"), the sole shareholder of Beringpromogul LLC, the Russian company which owns the Amaam North exploration licence. B.S. Chukchi Investments Limited holds the other 20% of Rosmiro. TIG will fund all project expenditure until a bankable feasibility study is completed as agreed by the Rosmiro shareholders. After completion of a bankable feasibility study each Rosmiro shareholder is required to contribute to further project expenditure on a pro-rata basis. Siberian Tigers International Corporation, a company incorporated in Cyprus, is entitled to receive a royalty of 3% gross sales revenue from coal produced from within the Amaam North licence. In the event of TIG's partner not contributing to finance the project capital requirement and diluting its share below 20%, a royalty is payable to the JV partner proportionately to the amount of dilution, up to a maximum of 2%. This was not included in the financial assessment at the project level.

Note B – Inferred Resources

According to the commentary accompanying the JORC Code an 'Inferred Mineral Resource' is that part of a Mineral Resource for which quantity and grade (or quality) are estimated on the basis of limited geological evidence and sampling. Geological evidence is sufficient to imply but not verify geological and grade (or quality) continuity. It is based on exploration, sampling and testing information gathered through appropriate techniques from locations such as outcrops, trenches, pits, workings and drill holes. An Inferred Mineral Resource has a lower level of confidence than that applying to an Indicated Mineral Resource and must not be converted to an Ore Reserve. It is reasonably expected that the majority of Inferred Mineral Resources could be upgraded to Indicated Mineral Resources with continued exploration

Note C – Indicated Resources

According to the commentary accompanying the JORC Code an 'Indicated Mineral Resource' is that part of a Mineral Resource for which quantity, grade (or quality), densities, shape and physical characteristics are estimated with sufficient confidence to allow the application of modifying factors in sufficient detail to support mine planning and evaluation of the economic viability of the deposit. Geological evidence is derived from adequately detailed and reliable exploration, sampling and testing gathered through appropriate techniques from locations such as outcrops, trenches, pits, workings and drill holes, and is sufficient to assume geological and grade (or quality) continuity between points of observation where data and samples are gathered.

Note D – Measured Resources

According to the commentary accompanying the JORC Code a 'Measured Mineral Resource' is that part of a Mineral Resource for which quantity, grade (or quality), densities, shape, and physical characteristics are estimated with confidence sufficient to allow the application of Modifying Factors to support detailed mine planning and final evaluation of the economic viability of the deposit. Geological evidence is derived from detailed and reliable exploration, sampling and testing gathered through appropriate techniques from locations such as outcrops, trenches, pits, workings and drill holes, and is sufficient to confirm geological and grade (or quality) continuity between points of observation where data and samples are gathered. A Measured Mineral Resource has a higher level of confidence than that applying to either an Indicated Mineral Resource or an Inferred Mineral Resource. It may be converted to a Proved Ore Reserve or under certain circumstances to a Probable Ore Reserve.

Note E – Exploration Target

According to the commentary accompanying the JORC Code an 'Exploration Target' is a statement or estimate of the exploration potential of a mineral deposit in a defined geological setting where the statement or estimate, quoted as a range of tonnes and a range of grade (or quality), relates to mineralisation for which there has been insufficient exploration to estimate a Mineral Resource. Any such information relating to an Exploration Target must be expressed so that it cannot be misrepresented or misconstrued as an estimate of a Mineral Resource or Ore Reserve. The terms Resource or Reserve must not be used in this context.

Note F – Reserves

According to the commentary accompanying the JORC Code a 'Reserve' is the economically mineable part of a Measured and/or Indicated Mineral Resource. It includes diluting materials and allowances for losses, which may occur when the material is mined or extracted and is defined by studies at Pre-Feasibility or Feasibility level as appropriate that include application of Modifying Factors. Such studies demonstrate that, at the time of reporting, extraction could reasonably be justified.

Forward Looking Statements

This release includes forward looking statements. Often, but not always, forward looking statements can generally be identified by the use of forward looking words such as "may", "will", "expect", "intend", "plan", "estimate", "anticipate", "continue", and "guidance", or other similar words and may include, without limitation statements regarding plans, strategies and objectives of management, anticipated production or construction commencement dates and expected costs or production outputs. Forward looking statements in this release include, but are not limited to, the capital and operating cost estimates and economic analyses from the BFS.

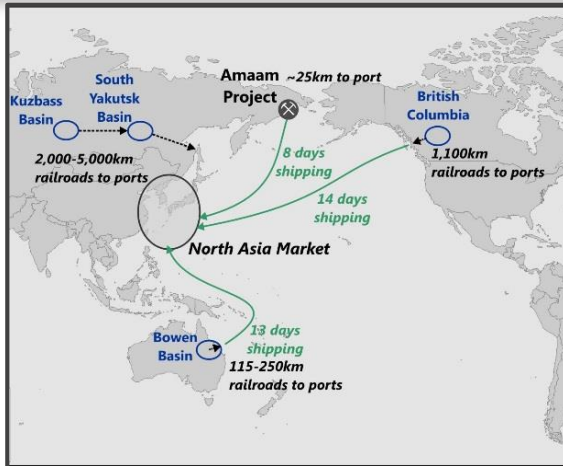
Forward looking statements inherently involve known and unknown risks, uncertainties and other factors that may cause the company's actual results, performance and achievements to differ materially from any future results, performance or achievements. Relevant factors may include, but are not limited to, changes in commodity prices, foreign exchange fluctuations and general economic conditions, increased costs and demand for production inputs, the speculative nature of exploration and project development, including the risks of obtaining necessary licences and permits and diminishing quantities or grades of resources or reserves, political and social risks, changes to the regulatory framework within which the company operates or may in the future operate, environmental conditions including extreme weather conditions, recruitment and retention of personnel, industrial relations issues and litigation.

Forward looking statements are based on the company and its management's good faith assumptions relating to the financial, market, regulatory and other relevant environments that will exist and affect the company's business and operations in the future. The company does not give any assurance that the assumptions on which forward looking statements are based will prove to be correct, or that the company's business or operations will not be affected in any material manner by these or other factors not foreseen or foreseeable by the company or management or beyond the company's control. Although the company attempts to identify factors that would cause actual actions, events or results to differ materially from those disclosed in forward looking statements, there may be other factors that could cause actual results, performance, achievements or events not to be anticipated, estimated or intended, and many events are beyond the reasonable control of the company. Accordingly, readers are cautioned not to place undue reliance on forward looking statements.

Forward looking statements in this release are given as at the date of issue only. Subject to any continuing obligations under applicable law or any relevant stock exchange listing rules, in providing this information the company does not undertake any obligation to publicly update or revise any of the forward looking statements or to advise of any change in events, conditions or circumstances on which any such statement is based.

- 1. A large and growing resource base of high quality metallurgical coal**
- 2. Outstanding project location on the Pacific coast, 35 km to open water seaport and TIG owned coal terminal and on Asia's doorstep**
- 3. Project F to be brought into production quickly and cheaply - to be one of the lowest cost producers in the world**
 - Low Capital Starter Project – 1 Mtpa for 10 years**
 - Extensional drilling indicating excellent potential for mine life extension and production increases**
 - Lower incremental capital costs for potential expansion**
 - Expected steady state 1 Mtpa costs of less than \$60/t FOB to further reduce with potential expansion**
- 4. In a stable and supportive jurisdiction – Chukotka, Far East Russia**
- 5. A team of mine builders with a proven track record**

Two large coking coal deposits - 593Mt in Resources. Low cost starter project. Excellent growth potential.



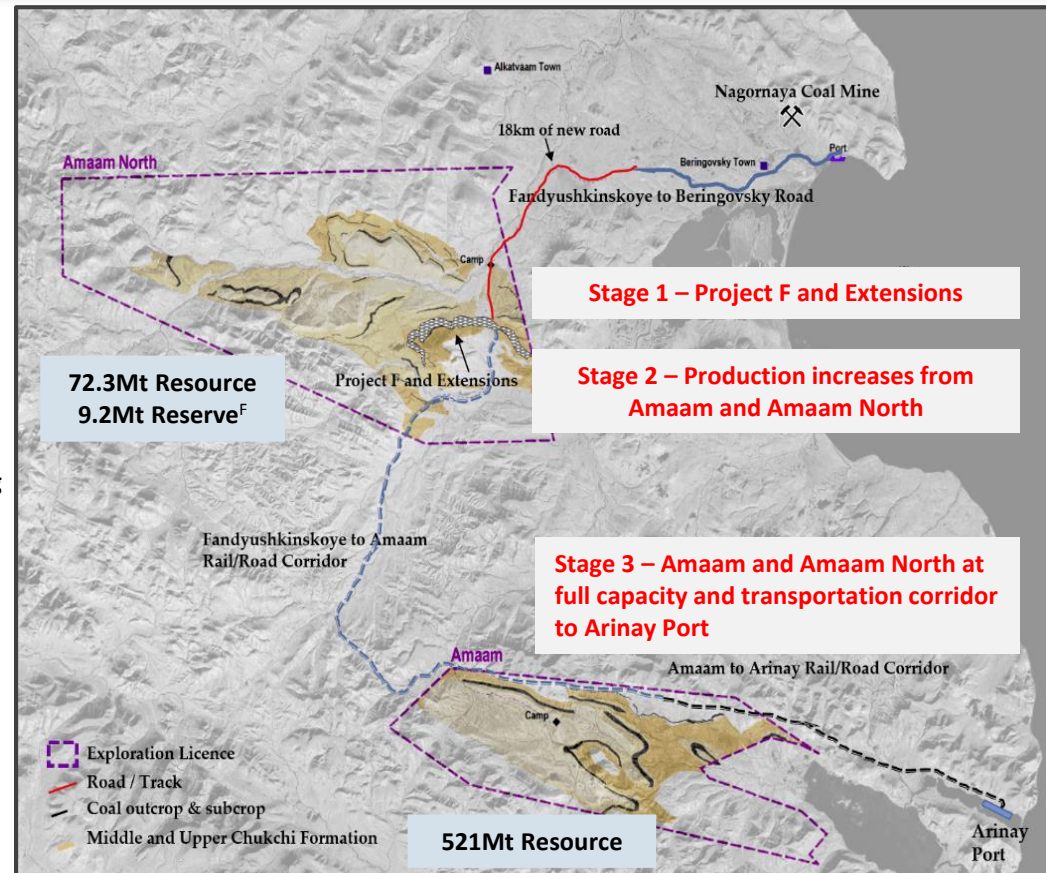
TIG has an 80% interest^A in two exceptionally well located, large coking coal projects.

■ Amaam North incorporating Project F:

- Mining Licence granted 2015.
- Initial mine fleet at site. Early site development work commenced.
- Key Project F infrastructure in place with Company acquiring Beringovsky Coal Terminal in 2014.

■ Amaam:

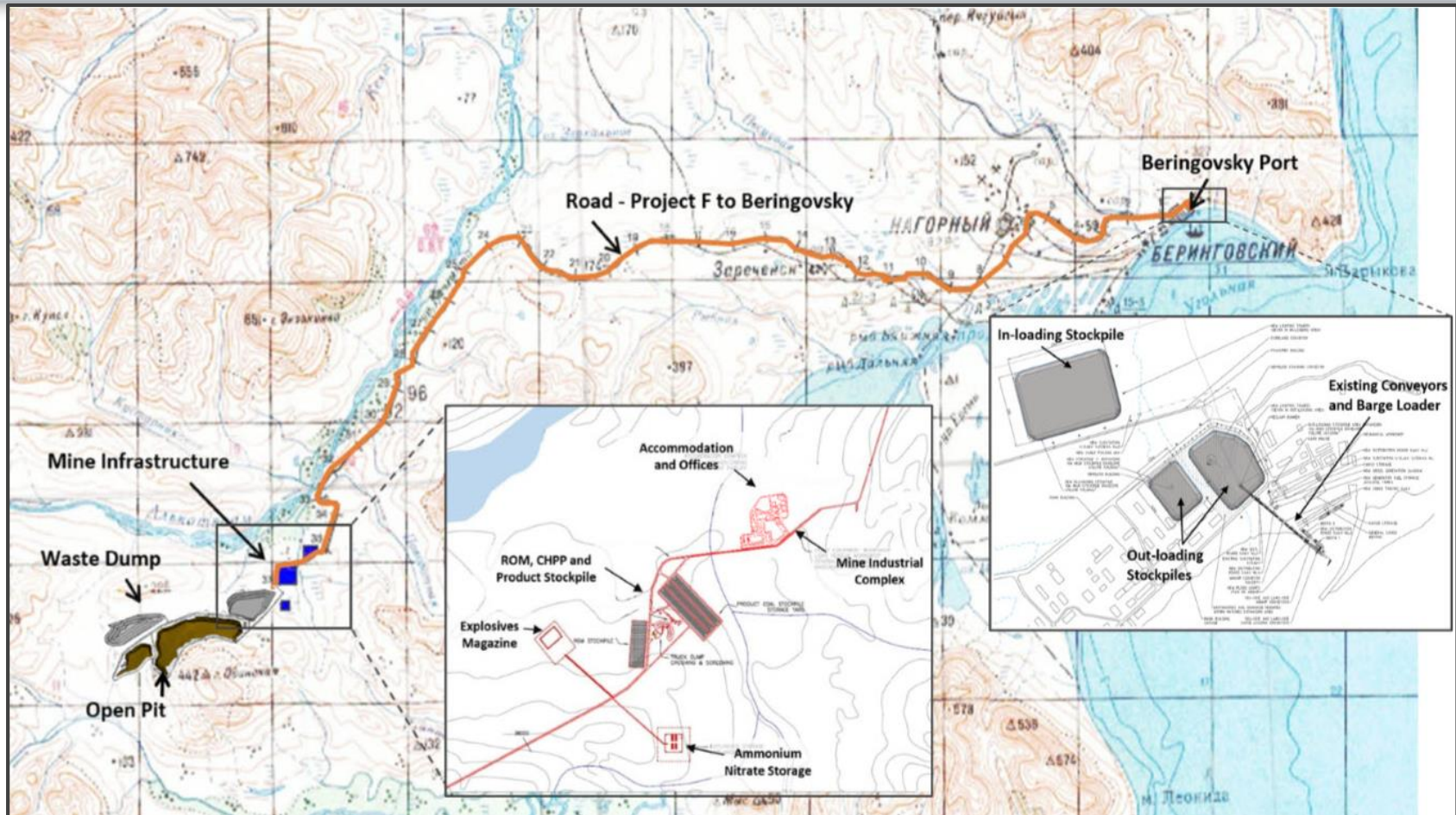
- 521 Mt in Resources. Potential for large scale for +5 Mtpa operations.
- Outstanding Exploration Potential – larger areas of mapped coal seams yet to be drilled.



The Project F Feasibility Study confirms its potential as a low capex, low opex, project with excellent upside potential. Amaam PFS confirms its potential as a large scale, low cost, world class coking coal project.

This pipeline of projects provides TIG with multiple development options, including the opportunity to develop a very low capital and operating cost “starter” mine with potential to ramp up production both at Amaam North and Amaam off a substantial and well defined resource base. This would enable TIG to become a major coking coal producer and a significant contributor to the raw material supply chain of the Asian steel industry.

Project F – Low strip ratio open cut mine with short road link to TIG owned Beringovsky infrastructure and coal port

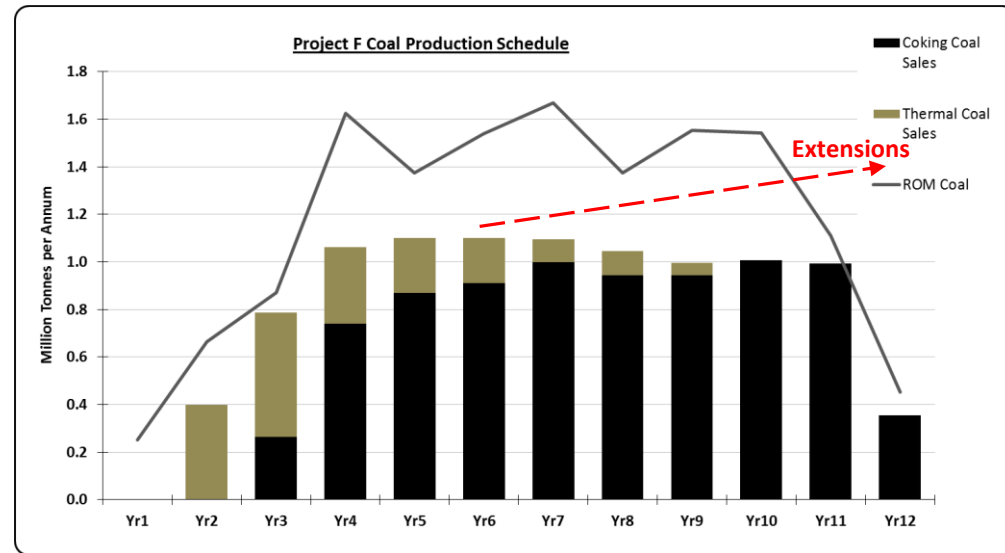


Field Work at Amaam North – Deposit F

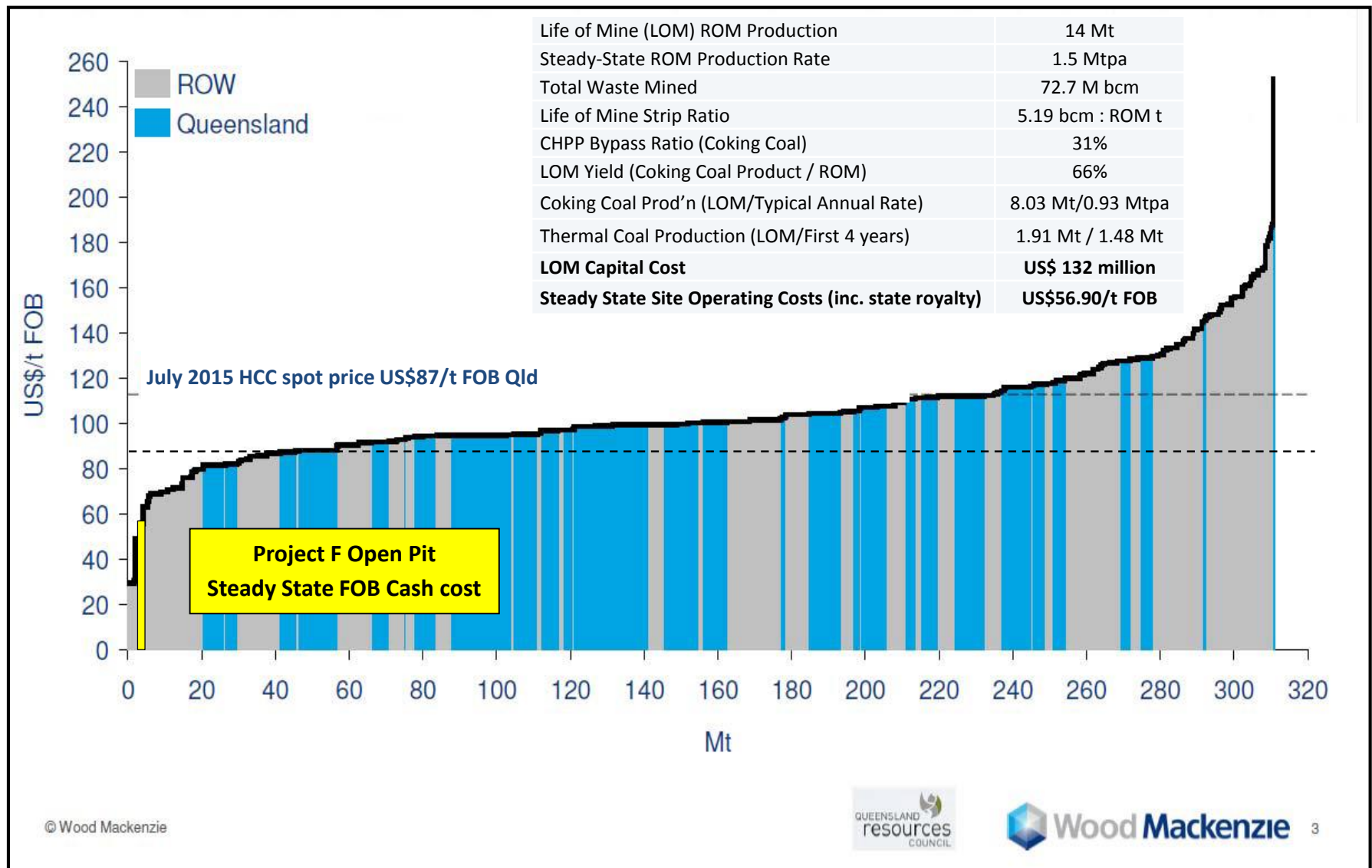
Feasibility Study confirms Project F's potential to be one of the world's lowest cost coking coal operations

Highlights:

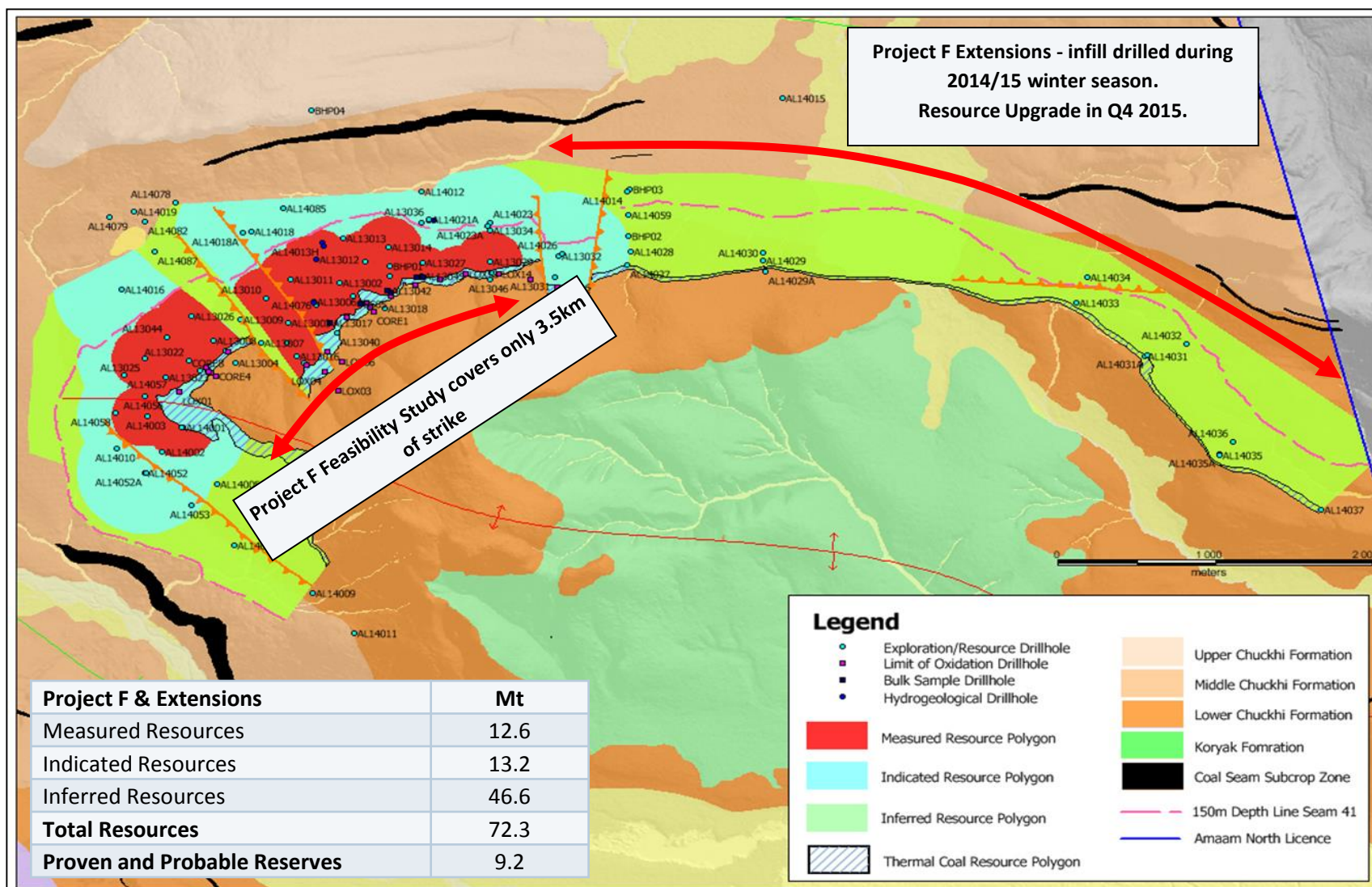
- Project F Starter
 - Open pit production of **~1Mtpa coking coal** over initial 11 year mine life.
 - Main product: **semi-hard coking coal with very low Sulphur & Phosphorous.**
 - Typical **annual after tax cash flow of US\$49m** post ramp-up (using Wood Mackenzie April 2015 price forecasts).
 - Life of mine capital cost **US\$132 million** (excludes closure costs).
 - Steady state **FOB cash costs of under \$60/t**- one of lowest operating cost coking coal mines in the world.
- Excellent upside potential in **recently defined Resources** along strike and down dip of open pit:
 - **Production rate and/or LOM increase;**
 - Low incremental capital cost; and
 - FOB costs projected to reduce further.
- TIG controls all infrastructure and logistics to bulk carriers including its **100% owned Beringovsky coal port 35km from the project**
- **Mining Licence granted – most permits now in place.**
- Project financing – Fund Vostok term sheet for RR 1.5 billion signed which will cover road construction costs.
- **Subject to funding, full mine development targeted to commence 2016, first coal on ship 2017.**



Feasibility Study confirms Project F potential to be one of the world's lowest cost coking coal operations

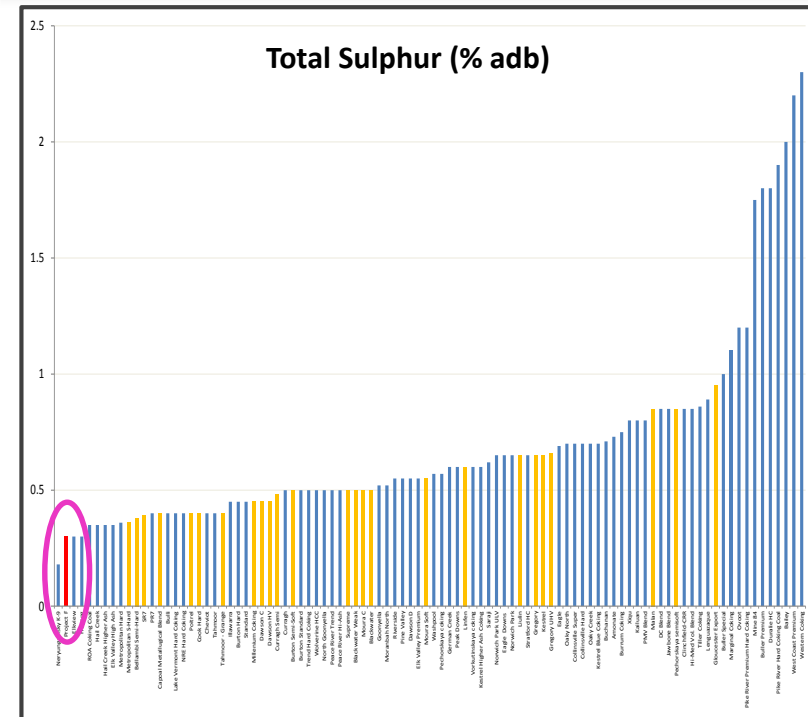


Project F Extensions - potential for additional mine life, production rate increases and operational cost reductions



Coal products have attractive properties for nearby Asian markets

| Quality Parameter | Coking Coal | Thermal |
|--|-------------|---------|
| Total Moisture | 9.0 | 10.0 |
| Inherent Moisture | 1.0 | 3.1 |
| Ash (% adb) | 9.5 | 17.5 |
| Volatile Matter (% adb) | 27.2 | 25.1 |
| Fixed Carbon (% adb) | 62.3 | 54.3 |
| Total Sulphur (% adb) | 0.31 | 0.28 |
| Phosphorus (% db) | 0.04 | - |
| HGI | 75 | 65 |
| Crucible Swelling No. | 6 - 7 | <1 |
| Maximum Fluidity (ddpm) | 80 - 100 | - |
| Rank (RoMax %) | 1.0 | - |
| Vitrinite (% by vol.) | 55 - 60 | - |
| Calorific Value (kcal/kg, net as received) | - | 5500 |
| Chlorine (% db) | - | 0.041 |
| Ash Fusion (°C red.) | - | 1505 |
| IDT | - | - |
| Spherical (Softening) | - | 1530 |
| Hemisphere | - | 1540 |
| Flow | - | 1545 |



- Coal and coke specs similar to some well known and utilised Queensland SHCC (Blackwater; Dawson Semi-hard; Cook; Poitrel)
- Additional selling points are very low sulphur and phosphorus
- Will be marketed as a blending coal to control sulphur of coke feed blends
- Two MoUs with potential offtake partners in place and work is progressing on binding offtake agreements
- Pricing for Feasibility Study assumed 15% discount to benchmark HCC forecasts

Project F Implementation - Initial Mine Fleet on site and Early Works commenced

Arrival of mine fleet at site



Site earthworks for fuel farm



Project F Implementation - Beringovsky Coal Port - TIG owns and operates this critical part of supply chain

- In June 2014, TIG acquired Beringovsky Port and Coal Terminal (Port Ugolny).
- TIG has exclusive ownership and management rights.
- Fully operational trans-shipment port with offshore loading points for handymax and panamax vessels.
- Historically trans-shipped over 700,000t of coal per year to adjacent coastal ports.
- Port to be refurbished and expanded. Similar Far East Russian trans-shipment port handles >3.0 Mtpa.
- TIG has shipped over 150,000t of coal from nearby Nagornaya mine since taking ownership.

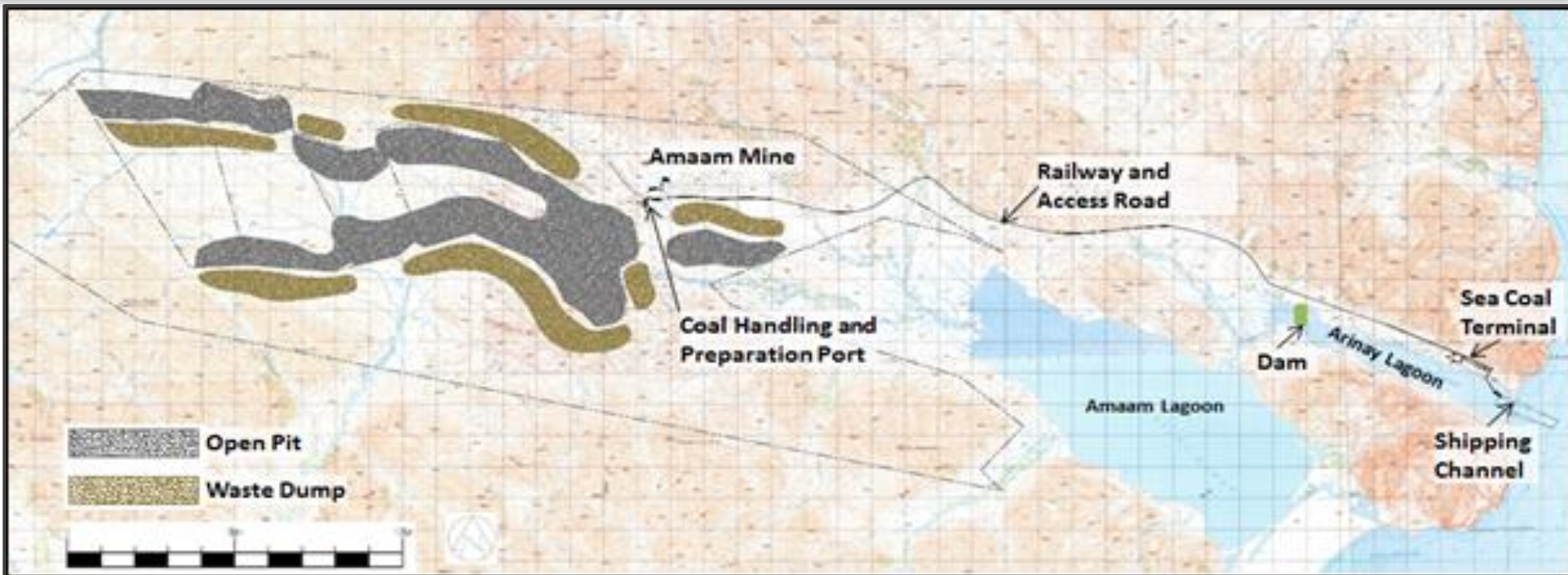


Port Ugolny, coal loader, conveyor and existing stockpile area



Coal being loaded from barges to geared vessel

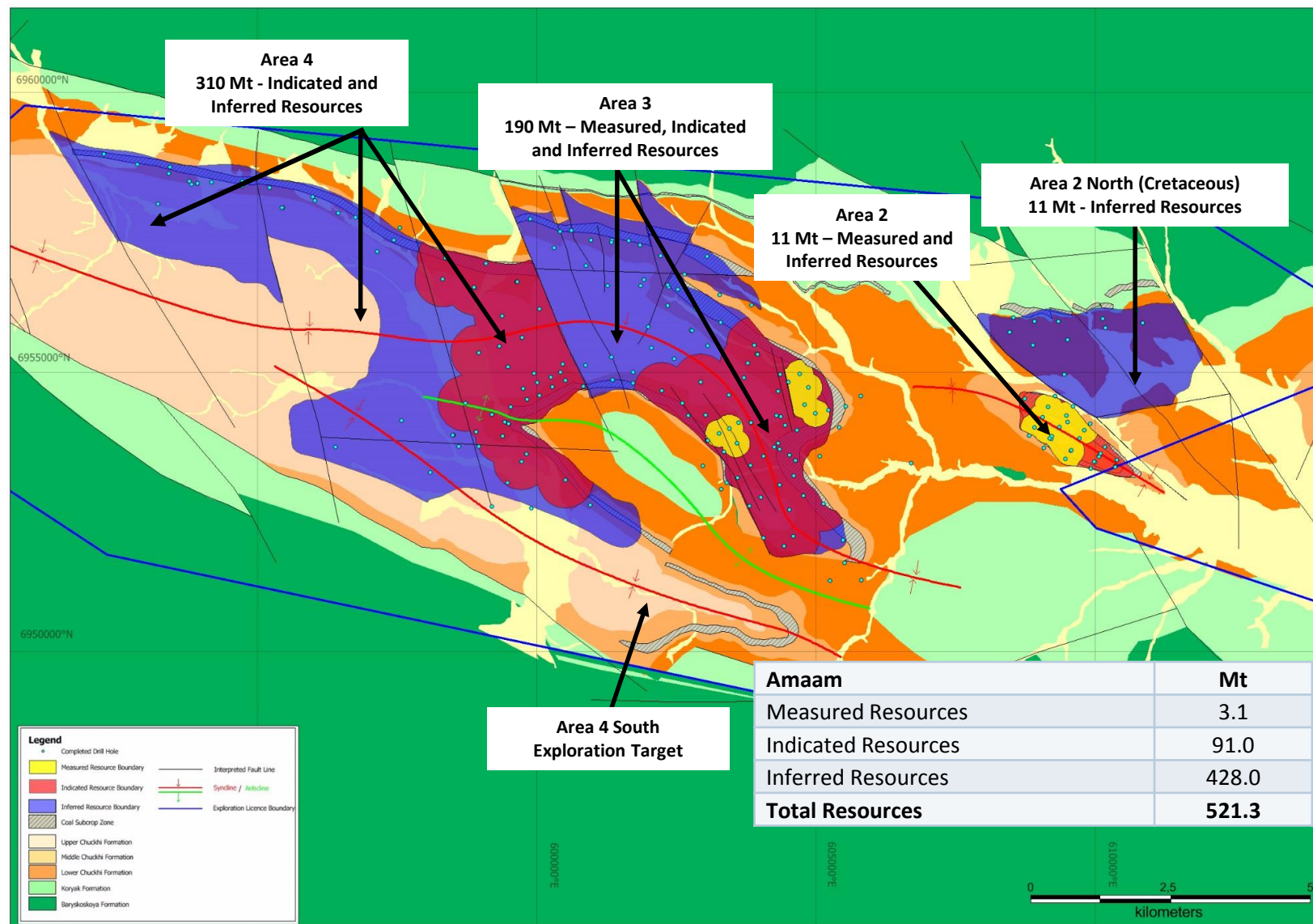
Amaam – large scale, high quality coking coal mine potential



- Coking coal resource of **521Mt only 30km from the Pacific Coast**.
- **Arinay Lagoon** - site approved as a year round deep water port capable of receiving cape-sized vessels.
- PFS completed 2013 - confirmed potential for a large, long life fully integrated operation.
- Close to Asian markets, ~8 days shipping distance.
- High quality, high vitrinite and **high fluidity coking coal**.
- Ideal project for the world's and particularly Asia's steelmakers.



Amaam – World Class Resource of high fluidity coking coal



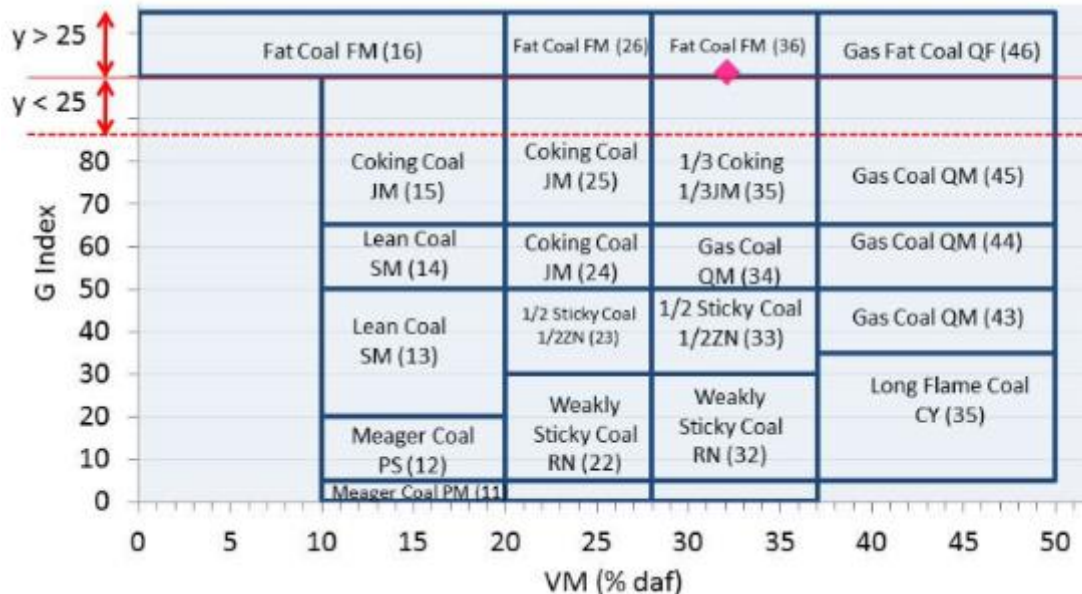
Amaam Coal Quality

- Preliminary coal quality work suggests the Amaam product will be an attractive blend coal for the Asian steel market.
- High vitrinite (>90%) washed coal exhibiting superior carbonisation properties (CSN, Grey King and fluidity).

| Parameters | | Premium Coking Coal | Hi Vol Coking Coal | Basis/Units |
|-------------------------|-----------------------------|---------------------|--------------------|---------------|
| Product Moisture | | 10 | 10 | % as received |
| Proximate Analysis | Inherent Moisture | 0.7 | 1.0 | % air dried |
| | Ash | 10.0 | 10.0 | |
| | Volatile Matter | 28.6 | 34.2 | |
| | Fixed Carbon | 60.7 | 54.8 | |
| Total Sulphur | | 0.79 | 1.10 | % air dried |
| Phosphorus | | 0.13 | 0.11 | |
| CSN | | 8.5 | 8.0 | mm |
| Gray-King Coke Type | | G9-G12 | G7-G11 | |
| G Index | | 96 | 100* | |
| Sapozhnikov Plastometer | Plastic Layer Thickness (Y) | 26 | 25 | |
| Gieseler Plastometer | Maximum Fluidity | 50-18,500 | 50-50,000 | ddpm |
| Dilatation | | 20-328 | 33-140 | % |
| Petrographics | Vitrinite | 92 | 90.2 | % vol |
| | Vitrinite Reflectance | 1.09 | 0.86 | % MMR |

* only one data point to date

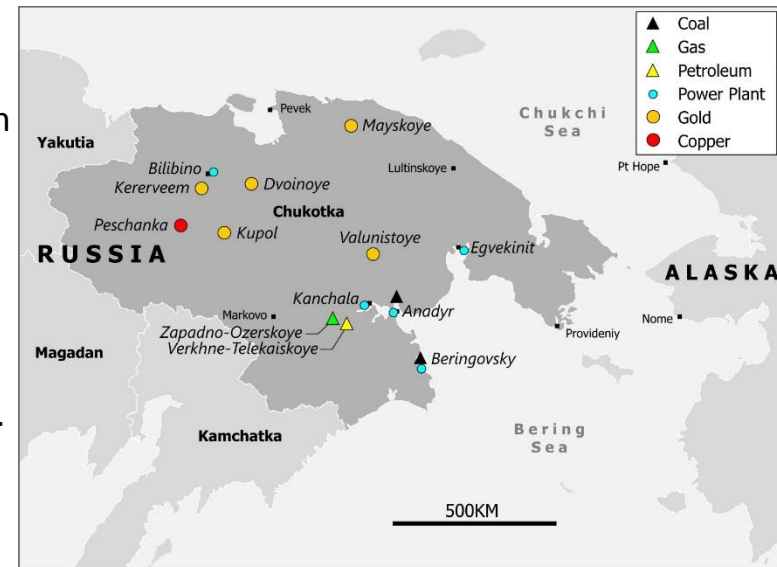
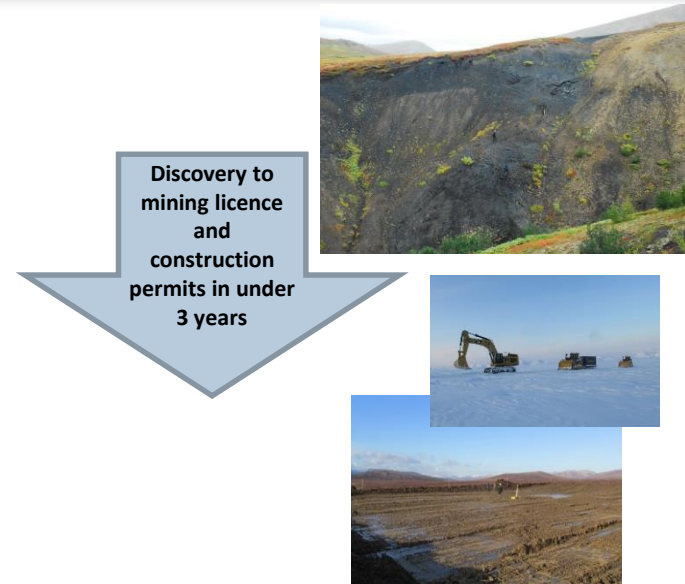
Amaam Coking Coal (◆) on Chinese Coal Classification System



High demand for Amaam coal is expected from China, where it will be classified as a Fat (Fm) Coking Coal

Doing business in Russia – an outstanding jurisdiction

- **TIG enjoys strong support from Federal, State and Local government.**
- In under three years at Project F:
 - Discovery Certificate granted.
 - Mining Licence granted.
 - Mine construction permits granted.
 - Infrastructure and road construction permits expected by end 2015.
- In recent meetings, Federal government has conveyed its support to TIG and fellow foreign investors at its top levels.
- The Governor of Chukotka recognises the importance of TIG's projects to the region and is active in his support:
 - Advanced Development Zone (ADZ) for Beringovskiy with tax, customs and social security advantages granted.
- Federal Russian Government support includes:
 - RDIF sovereign fund equity investment of \$16 million.
 - Fond Vostok sovereign fund debt term sheet to invest \$23 million in TIG infrastructure.
- Additionally, TIG has strong support from its local communities.
- **Chukotka is an excellent mining jurisdiction with:**
 - An exceptionally supportive local Government.
 - Proximate location to Asian markets.
 - Prior foreign (Kinross) and Russian minerals investment experience.
 - The advantageous ADZ investment and administration framework.



Board and management team with a strong track record in project delivery, operations management and portfolio growth

Board

Craig Wiggill - Non-Executive Chairman

- 30+ years of coal and mining industry experience
- Former CEO Anglo Coal Americas
- Extensive experience covers operational roles to commercial, trading and marketing responsibility, corporate strategy and business development
- Led development of new mining projects in remote and challenging environments from concept to full operational status.

Owen Hegarty - Non-Executive Director

- 40+ years industry experience, Senior Executive at Rio Tinto
- Founder and CEO of Oxiana Limited
- Director Fortescue, Highfield Resources, AusIMM
- Founder TRM, TIG

Bruce Gray - Non-Executive Director

- Long and distinguished career in the medical profession
- Founded and operated a number of highly successful start-up businesses in the medical sector.
- 13% shareholder of TIG

Tav Morgan - Non-Executive Director

- Industry Partner at Baring Vostok Capital Partners
- Former Managing Director at Goldman Sachs, Global Natural Resources
- Former Director and COO, Norilsk Nickel

Tagir Sitdekov - Non-Executive Director

- Director at Russian Direct Investment Fund
- Former Managing Director at A-1, part of Alfa Group, Russia's largest private conglomerate

Senior Management

Peter Balka - Chief Executive Officer

- 30+ years in the resources industry
- Mining Engineer - broad experience in open cut and underground mining operations, project development and management, feasibility studies and due diligence

Denis Kurochkin - Chief Financial Officer and General Director for Russian entities

- ACCA accredited chartered certified accountant. Strong Russian and international resource industry experience

Scott Southwood - General Manager Marketing

- Chemical Engineer, 20+ years in coal marketing and mining operations with Idemitsu, AngloCoal, Aspire

Leonid Skoptsov – General Manager Government and Community Relations

- 20+ years diverse resource industry experience in Russia covering project generation, exploration, development and operations

Capital Structure

| | |
|---|------------|
| ASX code | TIG |
| Share price (28/10/15) | A\$0.038 |
| Shares on issue | 895.8M |
| Options | 53.1M |
| Market cap (fully diluted) | A\$36.0M |
| Pro-forma cash (30/09/15) | A\$9.55M |
| Enterprise Value | A\$26.45M |
| Resource Tonnes (100% basis) | 593Mt |
| Resource Tonnes (80% equity interest) | 474Mt |
| EV per Resource tonne (equity interest) | A\$0.056/t |

Broker Coverage

Shaw Stockbroking

Foster Stockbroking

Ownership¹

| | |
|--------------------------------------|-------|
| Baring Vostok Mining Holding Limited | 24.5% |
| Tigers Realm Minerals | 13.4% |
| Bruce Gray | 13.0% |
| Russian Direct Investment Fund | 11.0% |
| Namarong Investments | 4.2% |
| Tony Manini | 2.2% |
| Couchy | 2.1% |
| Owen Hegarty | 1.9% |
| Regent Pacific | 1.4% |

Contacts & Information

www.tigersrealmcoal.com

Peter Balka, CEO +7 985 889 0774

David George, Investor Relations +61 438 414 692

Corporate –\$61M capital raising was supported by two Russian institutional shareholders in 2014

- Major capital raising completed in April 2014 made up of the following components:
 - A\$36.2M placement to Baring Vostok Mining Holding Limited.
 - A\$16.3M placement to Russian Direct Investment Fund.
 - A\$7.85M via a parallel placement to new and existing sophisticated and institutional shareholders.
 - A\$0.6M via a shareholder purchase plan for existing shareholders.
- Baring Vostok Fund V is one of six PE funds advised by Guernsey based Baring Vostok Capital Partners Limited:
 - One of Russia and the region's leading private equity firms.
 - The PE funds advised by BVCP have invested over US\$2.1 billion in more than 60 companies since 1994.
 - Currently have committed capital of US\$3.7 billion.
 - Over 15+ years in Russia, Baring Vostok's funds have been invested into 42 projects with an average holding period of 6 years.
- RDIF (funds total US\$10B) was created in 2011 under the leadership of both the President and Prime Minister of Russia to:
 - Invest alongside top global investors, side-by-side on the same terms.
 - Act as a catalyst for foreign direct investment in Russia.
 - Provide support and alignment of interests with foreign investors.

These two large and Russia experienced institutional investors not only provide strong financial support but also a number of strategic benefits including:

- **Governmental support.**
- **Lower sovereign risk profile.**
- **Enhanced relationships with regulators and financial organisations.**

2014 - 2015: News flow

- ✓ Announce Project F discovery – Q1 2013.
- ✓ Announce Amaam PFS results – completed March 2013.
- ✓ Announce Project F initial Resource – completed July 2013.
- ✓ Announce Project F PFS results – completed Sept 2013.
- ✓ Announce Resource upgrade.
- ✓ Complete \$61M fund raising.
- ✓ Announce Beringovsky Coal Port Terminal acquisition.
- ✓ Announce awarding of Project F Discovery Certificate.
- ✓ Submit Amaam North Mining Licence application.
- ✓ Acquire early mine development fleet and associated infrastructure for Project F.
- ✓ Obtain Amaam exploration licence extension.
- ✓ Announce Project F Resource upgrade.
- ✓ Amaam North Feasibility Study.
- ✓ Commence early development work on Project F.
- ✓ Announce Project F first Reserve statement.
- ✓ Project F Mining Licence awarded.
- ✓ Project F Approval to Mine secured.

Target activities for 2015

- Seek and obtain project finance for Project F development .
- Obtain remaining construction permits.
- Continue mine development via detailed engineering phase.
- Target First Coal on Ship in 2017.
- Undertake key tasks for Amaam and Arinay Port Feasibility Study.
- Continue drilling to grow and upgrade Resource base and meet licence commitments.





Tigers Realm Coal Limited (ASX:TIG)

www.tigersrealmcoal.com

**Peter Balka
CEO**

Email: IR@tigersrealmcoal.com