



**“The Emerging Name in Graphite”**

**AGM Presentation  
November 2015**

**ASX : MOZ**

# Mozambi – Strategy and Background

## Mozambi Resources - Description

- ASX listed graphite explorer with a growing tenement portfolio in the highly prospective Mozambican Mobile Belt
- Tanzania
  - 12 tenements acquired, 4 exciting prospects identified
  - Rapid advancement of a number of projects with short lead times between target acquisition and extensive drilling
  - Drilling identifying excellent graphite schist intersections
  - Rock chip sampling has confirmed the presence of large and jumbo flake graphite
- Management team with experience of delivering successful graphite exploration programs in Tanzania

## Corporate Strategy

*Mozambi Resources strategy is to develop a mid tier graphite exploration and development company and to produce a high quality graphite product to supply future demands of the developing industry, by;*

- Developing a world class tenement position for high quality graphite production within the graphite rich Mozambique Mobile Belt
- Targeting shallow large and jumbo flake graphite deposits in south eastern Tanzania
- Utilising industry best practice to explore and develop successful projects and deliver shareholder value

# Corporate Overview

## Capital Structure

Shares on Issue	566,523,275
Options and Rights	322,031,166
Share Price (25 Nov 2015)	A\$0.049
52 week high / low	0.055 / 0.006
Market Capitalisation (millions)	A\$27.76
Cash (30 Sept 2015)	A\$1,000,000

## Management Team

Managing Director	Alan Armstrong
Non Exec Chairman & Company Secretary	Adrien Wing
Non-Executive Director & Chief Geologist	Matt Bull

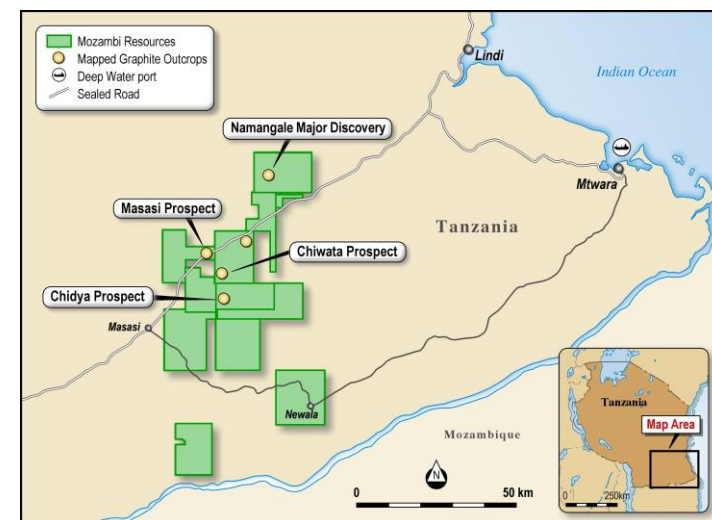
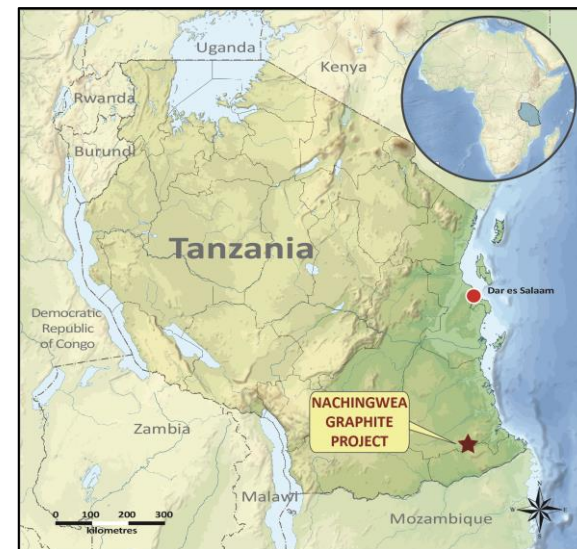
## Share Price Performance



**MOZAMBI**  
RESOURCES

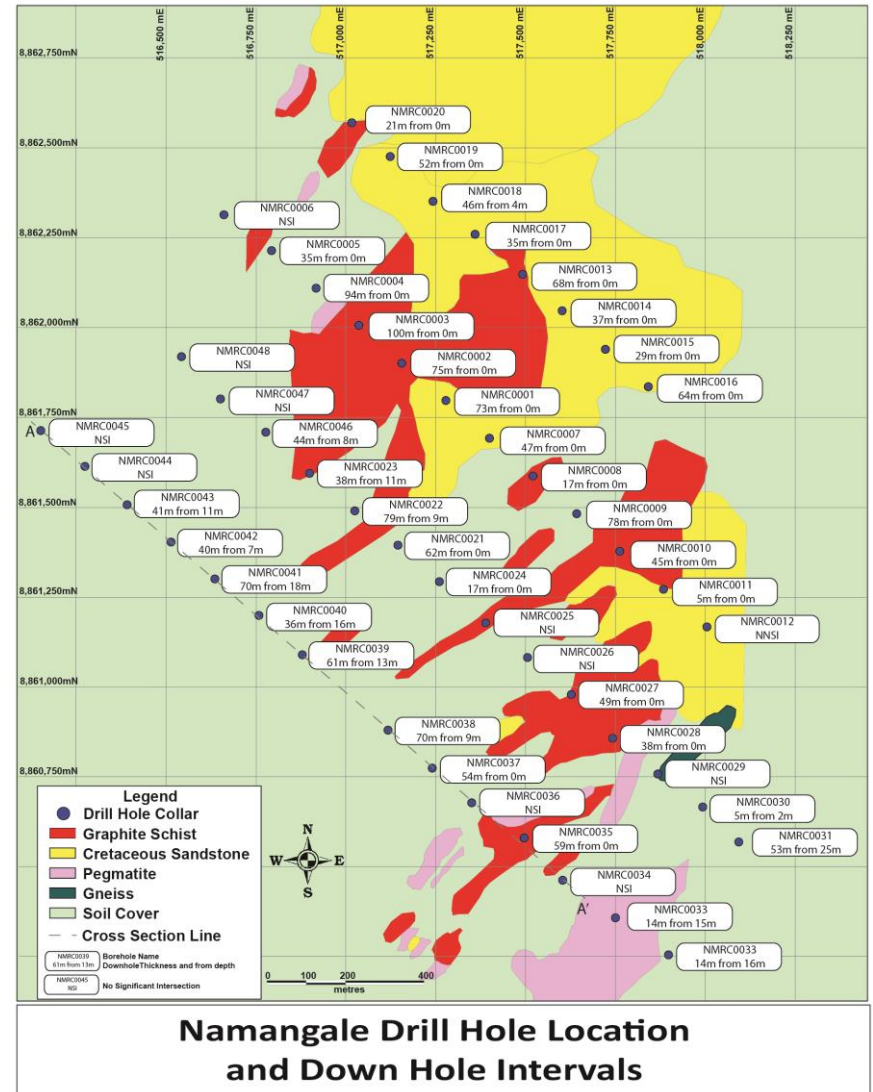
# Tanzanian Graphite Projects

- World class tenement position with 12 highly prospective exploration licences
- Four initial prospects being targeted, all of which have identified graphite schist mineralisation
  - Namangale
    - Major Discovery; completed 48 RC holes intersecting up to 100m graphite schist from surface
  - Chiwata
    - 21 RC holes completed intersecting between 10 – 20m graphite schist
  - Chidya
    - 2 Diamond drill holes completed. Intersected up to 27m of graphite schist at or near surface
  - Masasi
    - Trenching and mapping identified a graphite schist 40 – 50m wide
- Preliminary results indicating the presence of jumbo and large flake size
- Ideally located with good access to roads and port and Asian markets



# Namangale Prospect (PL10643)

- Namangale Project located in the central region of exploration licence PL10643
- 48 RC holes completed for 2,517m
- EM anomaly of around 1,800m in length and 800m width
- The current drill program has tested 1,200m of this EM anomaly and remains open to the north and south
- Drilling has identified a thick graphite schist of up to 100m thick from the surface (or near surface)
- Better intersections include;
  - NMRC0003: 100m from surface
  - NMRC0004: 94m from surface
  - NMRC0022: 79m from 9m
  - NMRC0038: 70m from 18m



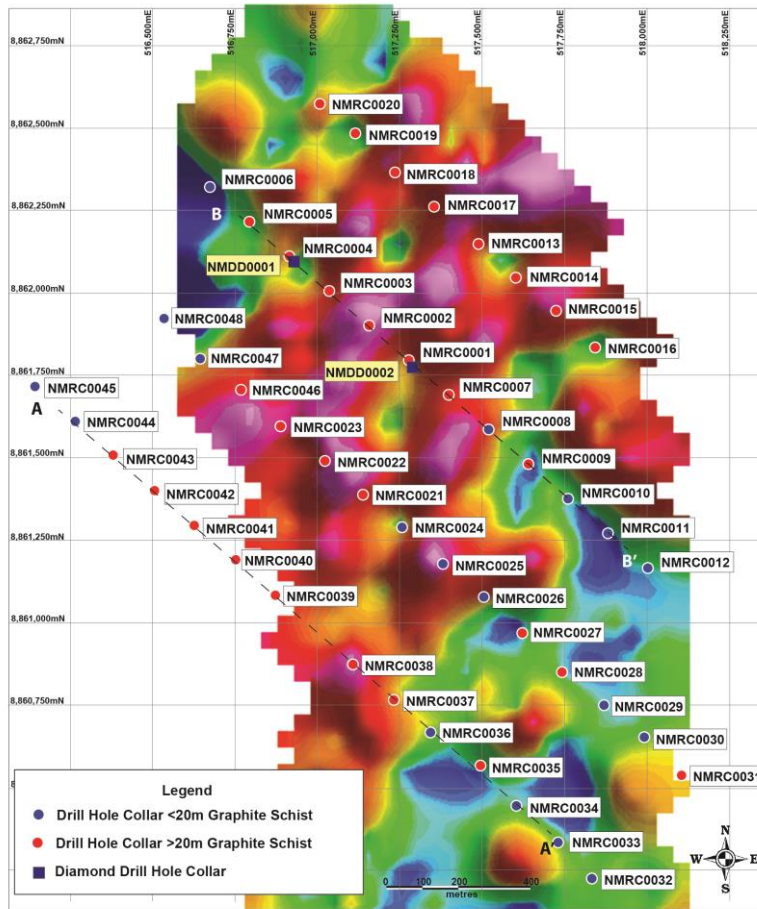


# Namangale Prospect (PL10643) continued

- Namangale is a major new graphite discovery
- Given exciting initial results, the drill program was hugely expanded to a total of 48 RC holes and 4 Diamond holes
- Majority of mineralisation logged as medium or high grade with coarse flake graphite
- Modelling has commenced in anticipation of defining a maiden JORC Resource in the near future
- Drilling assay results are pending and anticipated over the coming weeks
- Mozambi Resources are fast tracking Namangale towards development, with a scoping study anticipated to commence in early 2016



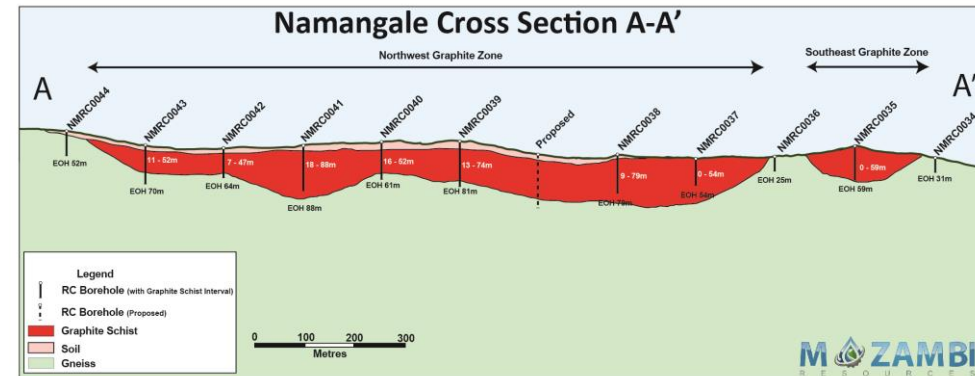
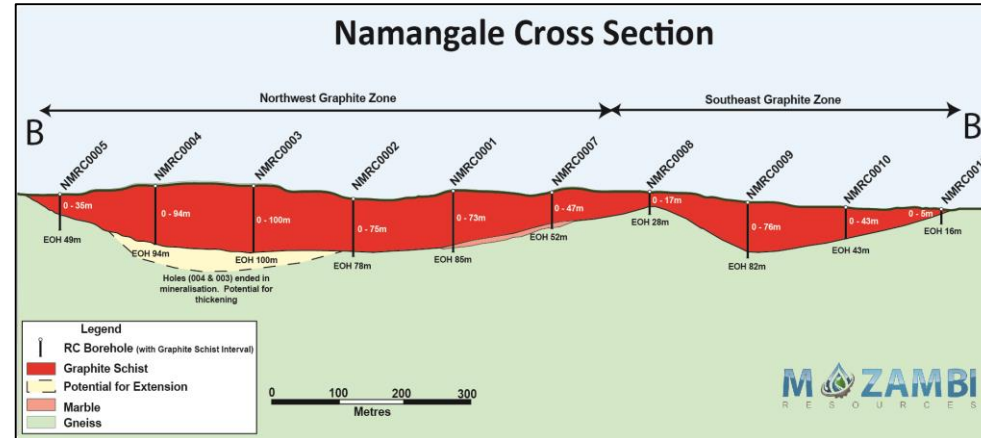
# Namangale Prospect (PL10643) continued



**Namangale Drill Hole Location and EM Anomaly**



Updated: 9 November 2015



# Nachingwea Project Infrastructure

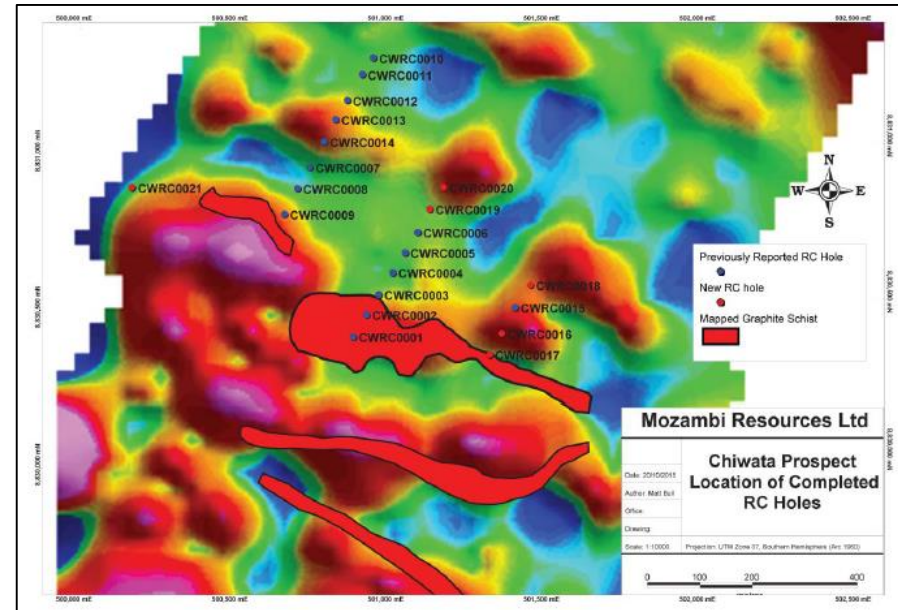
- Sealed road from deep water Mtwara Port runs through the Company's tenement package
- Namangale Prospect is approximately 10km from the sealed road and 140km from the deep water port
- Mtwara Port has current annual capacity of 400,000 tonnes with ability to expand to 750,000 tonnes without the need for additional berths
- Mtwara Port currently heavily underutilised with only 34% of capacity in use





# Chiwata Prospect (PL10644)

- Chiwata Project located in the South West corner of exploration licence PL10644
- Trenching, ground EM and 21 RC holes (1,156m) completed
- EM survey indicates exploration targets over a strike length of 7km
- Rock chip sample indicates approximately 36% jumbo flake size
- Intersected thicknesses of mineralisation were typically between 10 – 20 metres
- Drilling assay results are pending



Sample #	Total Graphitic Carbon	% Weight Distribution		
		Jumbo	Medium to Large	Fine
		+300 Microns	+150 – 300Microns	-150 Microns
NG01	7.9%	36.2%	56.0%	7.7%

# Other Projects

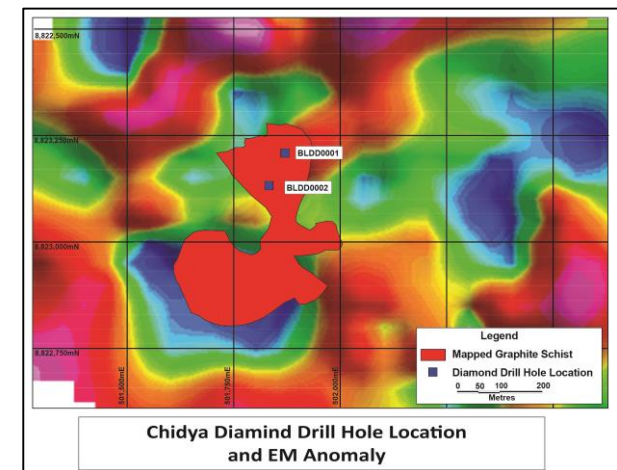
## Masasi Prospect (PL10643)

- Located in the eastern portion of tenement PL10642
- Trenching has been completed and identified a graphite schist approximately 40 -50m wide
- Rock chip sampling at the Masasi prospect resulted in an average grade of 7.1% tgc with trenching resulting in a wide zone of 66m @ 4% tgc including 16m @ 5.5%, 14m @ 5.2% and 8m @ 5.1% tgc
- Rock chip sample indicated 28.1% jumbo flake size

Sample #	Total Graphitic Carbon	% Weight Distribution		
		Jumbo	Medium to Large	Fine
		+300 Microns	+150 – 300Microns	-150 Microns
NG06	9.1%	28.1%	50.2%	21.6%

## Chidya Prospect (PL10643)

- Located in the eastern portion of Tenement PL10642
- Completed ground EM surveys
- Completed two short diamond drill holes (47.7m and 23.5m) to obtain fresh samples of graphite schist
- Graphite schist intersections have been logged as:
  - 27m from 2.7m (BLDD00001)
  - 18.35m from 0.4m (BLDD00002)
- Currently awaiting analysis results



# Tanzania

## Tanzania

- Tanzania is one of the most attractive African countries for mineral investment for the following reasons:
  - Mineral rich geology with mining contributing 3.3% to GDP
  - Tanzania GDP growth ~7% in 2013 & 2014, forecast at same rate in 2015 & 2016
  - Politically stable multi party democracy
  - English is an official language
  - British Common Law System
  - Well established mining and services industry
  - Mostly sealed roads from the port to our targeted project area
  - Competitive tax rates
  - Reform of mining policy to attract investment since 1998

## Mining in Tanzania

- Africa's forth largest producer of gold and diamonds
- Contributes ~3% to national GDP and rose by 7% in 2013 with increased production of gold and tanzanite
- Growth in exploration success on uranium, coal, nickel and graphite will support future growth



# Graphite and Its Uses

The use of graphite in lithium ion batteries and other high tech applications is expected to more than double the world demand for natural flake graphite by 2020.





# Graphite Pricing

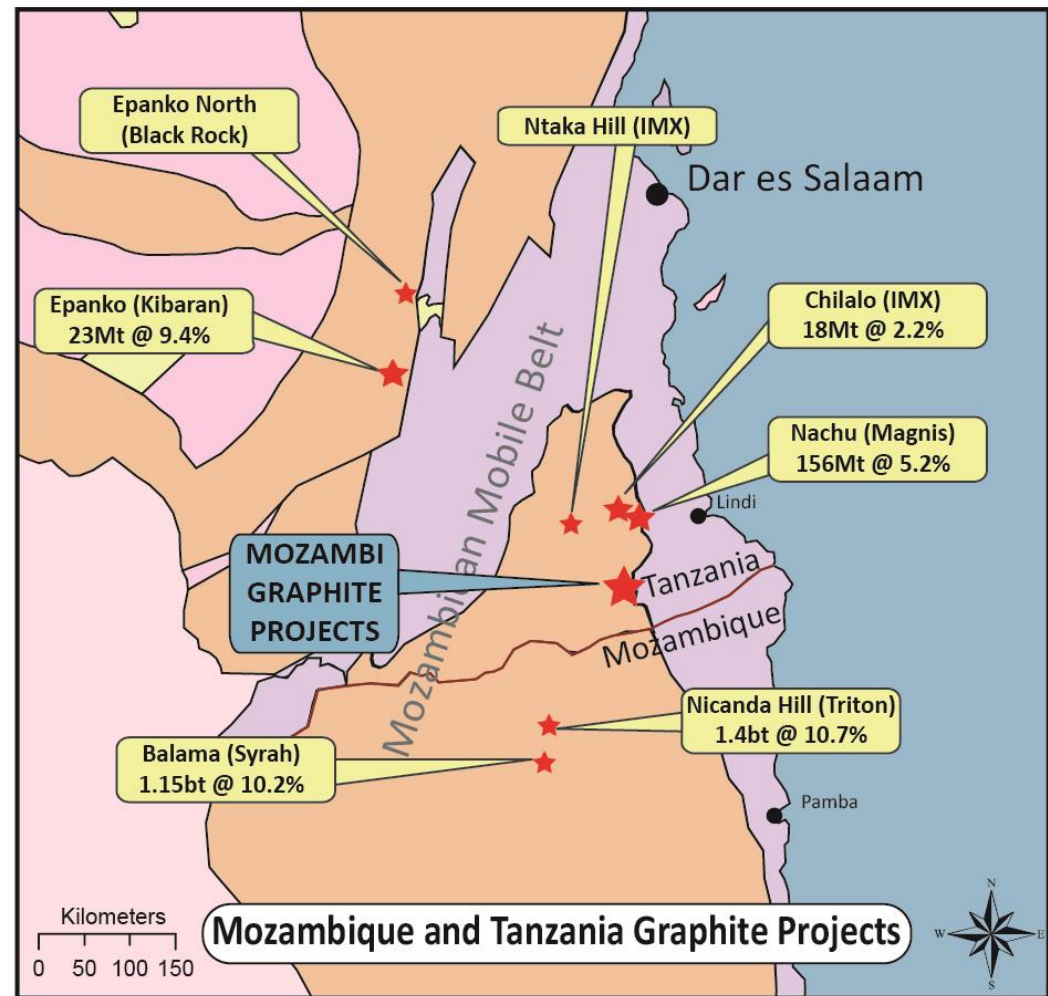
- Price for base market applications largely dependent upon purity and flake size
- Pricing is opaque – settled directly between buyer and seller
- Prices quoted largely for the base applications
- Premium pricing structure for high purity flake for battery and electronic applications
- MOZ targeting exploration on large and jumbo flake graphite

Graphite Product	Purity (%)	Mesh Size	Flake Size	Current Price (US\$/t)	Forecast 2020 Price (US\$/t)
<b>Jumbo Flake</b>	96 – 98%	+48	>300µm	2,300	6,175
<b>Large Flake</b>	94 – 97%	+80 – 48	177 - 300µm	1,300	1,165
<b>Medium Flake</b>	94 – 97%	+100 – 80	148 - 177µm	950	517
<b>Small Flake</b>	94 – 97%	+200 – 100	74 - 148µm	750	495
<b>Amorphous</b>	80 – 85%	-200	<74µm	550	359
<b>Vein</b>	+98%	NA		Similar pricing to equivalent flake	
<b>Synthetic</b>	99.95%			7,000 – 20,000	

Source: Breakaway Research, Nov 2014

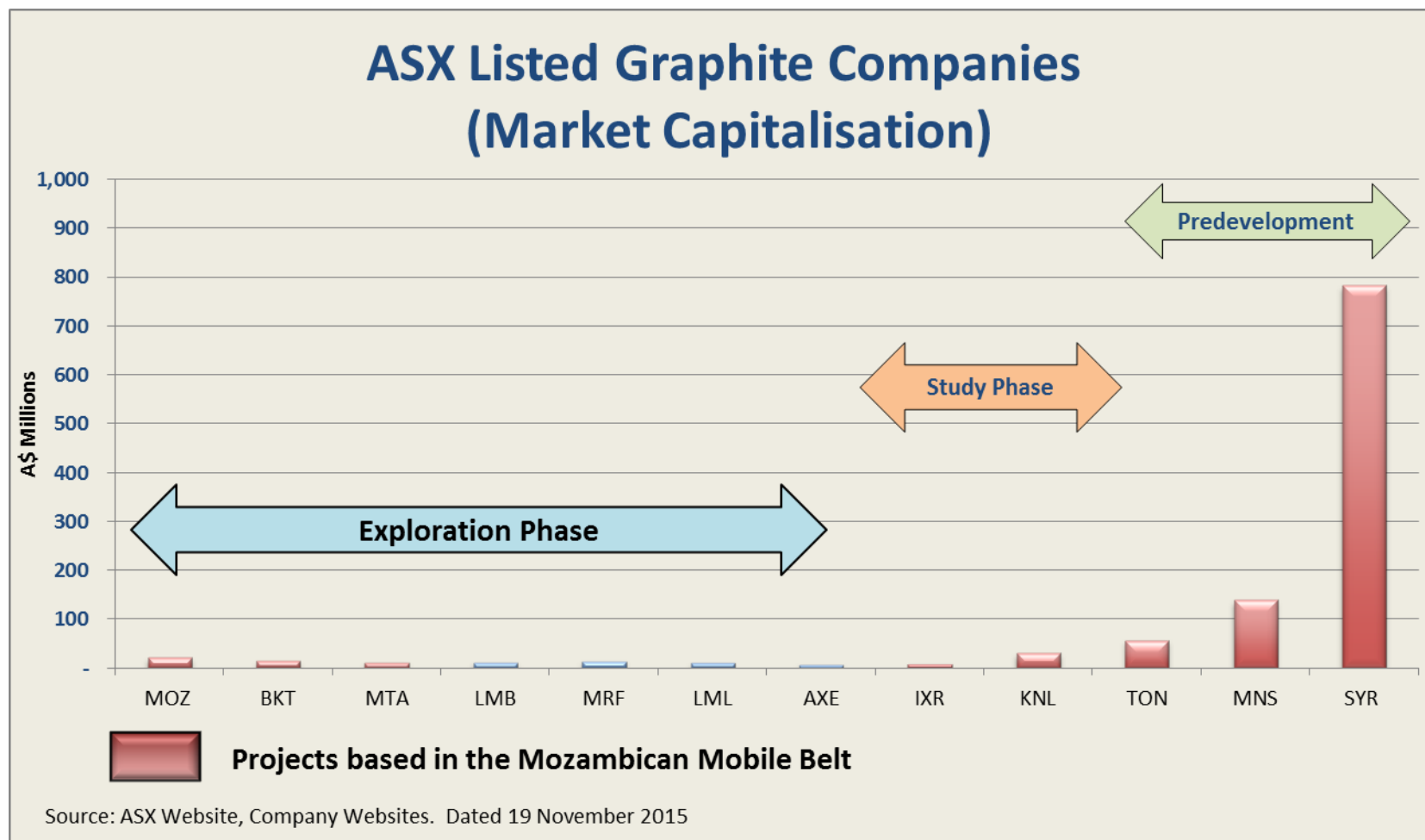
# Mozambican Mobile Belt – The world's future source of Graphite

- The Mozambican Mobile Belt represents a band of highly metamorphosed rocks extending through East Africa
- Within Tanzania and Mozambique organic carbon rich mudstone units have been altered to feldspar-quartz-graphite schists.
- Typically these units now contain 2-10% graphite.
- Tanzanian graphite appears to contain larger flake sizes however with lower average total graphitic carbon grades than Mozambique
- Mozambi have acquired an extensive tenement portfolio within this graphite rich region.



# Value Proposition

- Significant growth in value can be achieved through exploration success



# Proposed Work Program – Tanzanian Graphite Projects

Activity	Aug 2015	Sept 2015	Oct 2015	Nov 2015	Dec 2015	Q1 2016	Q2 2016	Q3 2016	Q4 2016
Surface Mapping Chiwata/Namangale	Complete								
Tenement Granting	Complete								
Ground Magnetics Chiwata/Namangale		Complete							
Airborne VTEM			Ongoing						
Drill Target Identification		Complete							
Drilling at Chiwata / Namangale			Complete	Complete					
Maiden Resource Chiwata / Namangale									
Expanded Drilling program at Namangale									
Expanded Resource									
Scoping Study									



# Conclusion

- Mozambi Resources is a highly focused Tanzanian graphite explorer with an extensive suite of quality assets in the most prospective graphite provinces in the world
- Namangale an emerging world class graphite deposit
- Tanzania is an established mining environment
- Significant growth potential through the development of Namangale
- Predicted strong demand for flake graphite, especially larger flake sizes
- Preliminary results indicates 25-36% graphite is of Jumbo size with low proportion of fine flakes smaller than 150 microns
- Clearly defined exploration program to deliver shareholder value
  - Assay results from drilling programs currently being completed, including full analysis on diamond drill core
  - JORC Resource – Following the results of the drill program at Namagale Prospect Mozambi aims to define our maiden JORC Resource in Tanzania and recognise the inherent value of our assets

# Disclaimer

The information contained in this confidential document (“Presentation”) has been prepared by Mozambi Resources Limited (the “Company”). It has not been fully verified and is subject to material updating, revision and further amendment.

While the information contained herein has been prepared in good faith, neither the Company nor any of its shareholders, directors, officers, agents, employees or advisers give, have given or have the authority to give, any representations or warranties (express or implied) as to, or in relation to, the accuracy, reliability or completeness of the information in this Presentation, or any revision thereof, or of any other written or oral information made or to be made available to any interested party or its advisers (all such information being referred to as “Information”) and liability therefore is expressly disclaimed. Accordingly, neither the Company nor any of its shareholders, directors, officers, agents, employees or advisers take any responsibility for, or will accept any liability whether direct or indirect, express or implied, contractual, tortious, statutory or otherwise, in respect of, the accuracy or completeness of the information or for any of the opinions contained herein or for any errors, omissions or misstatements or for any loss, howsoever arising, from the use of this Presentation.

Neither the issue of this Presentation nor any part of its contents is to be taken as any form of commitment on the part of the Company to proceed with any transaction and the right is reserved to terminate any discussions or negotiations with any prospective investors. In no circumstances will the Company be responsible for any costs, losses or expenses incurred in connection with any appraisal or investigation of the Company. In furnishing this Presentation, the Company does not undertake or agree to any obligation to provide the recipient with access to any additional information or to update this Presentation or to correct any inaccuracies in, or omissions from, this Presentation which may become apparent.

This Presentation should not be considered as the giving of investment advice by the Company or any of its shareholders, directors, officers, agents, employees or advisers. Each party to whom this Presentation is made available must make its own independent assessment of the Company after making such investigations and taking such advice as may be deemed necessary. In particular, any estimates or projections or opinions contained herein necessarily involve significant elements of subjective judgement, analysis and assumptions and each recipient should satisfy itself in relation to such matters.

Neither this presentation nor any copy of it may be (a) taken or transmitted into the United Kingdom, Canada, Japan or the United States of America, their territories or possessions; (b) distributed to any U.S. person (as defined in Regulation S under the United States Securities Act of 1933 (as amended)) or (c) distributed to any individual outside Australia, Canada or Japan who is a resident thereof in any such case for the purpose of offer for sale or solicitation or invitation to buy or subscribe any securities or in the context where its distribution may be construed as such offer, solicitation or invitation, in any case except in compliance with any applicable exemption. The distribution of this document in or to persons subject to other jurisdictions may be restricted by law and persons into whose possession this document comes should inform themselves about, and observe, any such restrictions. Any failure to comply with these restrictions may constitute a violation of the laws of the relevant jurisdiction.



**Mozambi Resources**

**Telephone: + 61 3 9614 0600**

**Email: [Info@mozambiresources.com.au](mailto:Info@mozambiresources.com.au)**

**Web: [www.mozambiresources.com.au](http://www.mozambiresources.com.au)**