



FOCUS ON EXPLORATION COPPER AND GOLD ACTIVELY EXPLORING

Brisbane Presentation • June 2014
Managing Director • Peter Schwann



Disclaimer and Competent Person's statement

Forward Looking Statements Caution

Certain statements contained in this document constitute forward looking statements. Such forward-looking statements are based on a number of estimates and assumptions made by the Company and its consultants in light of experience, current conditions and expectations of future developments which the Company believes are appropriate in the current circumstances. These estimates and assumptions while considered reasonable by the Company are subject to known and unknown risks, uncertainties and other factors which may cause the actual results, achievements and performance of the Company to be materially different from the future results and achievements expressed or implied by such forward-looking statements. Investors are cautioned that forward looking information is no guarantee of future performance and accordingly, investors are cautioned not to place undue reliance on these forward-looking statements.

Competent Person Statement

Information in this announcement that relates to Mineral Resource and exploration results is based on information compiled by Mr Peter Schwann who is the Managing Director of Aruma Resources Limited. Mr Schwann is a Chartered Professional (Geology) and Fellow of the Australasian Institute of Mining and Metallurgy and has sufficient experience which is relevant to the style of mineralisation and type of deposit under consideration and to the activity which they are undertaking, to qualify as Competent Person as defined in the 2012 Edition of the "Australasian Code for Reporting of Exploration Results, Mineral Resources and Ore Reserves". Mr Schwann consents to the inclusion in the document of the information in the form and context in which it appears.



Why is this presentation important?

Aruma has acquired a copper project

- A PROBABLE NEW COPPER CAMP (1114km²)
- OVER 100 km OF MINERALISED STRUCTURE
- DRILLED MINERALISATION FIRST UP
- MORE GOSSAN TARGETS READY TO DRILL

WE STILL HAVE \$2.6M CASH AS OF TODAY

Aruma still has gold projects ready to drill



The key projects

Bulloo Downs Project - Copper

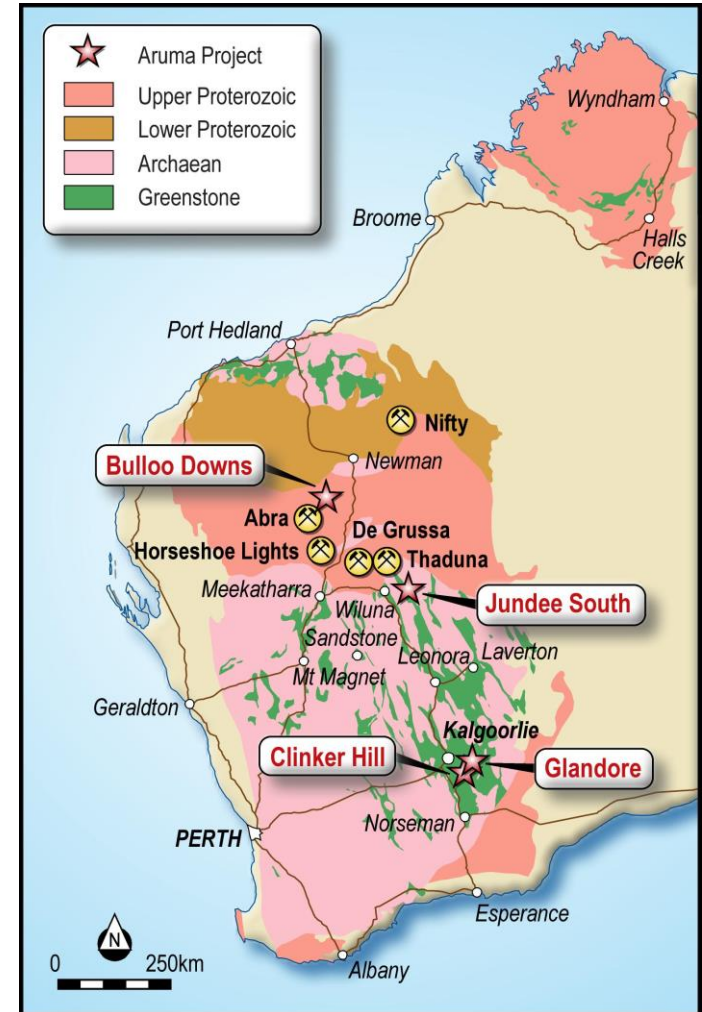
- 100km south of Newman
- Developing Copper district

Glandore Project - Gold

- 40km east of Kalgoorlie
- No Heritage issues

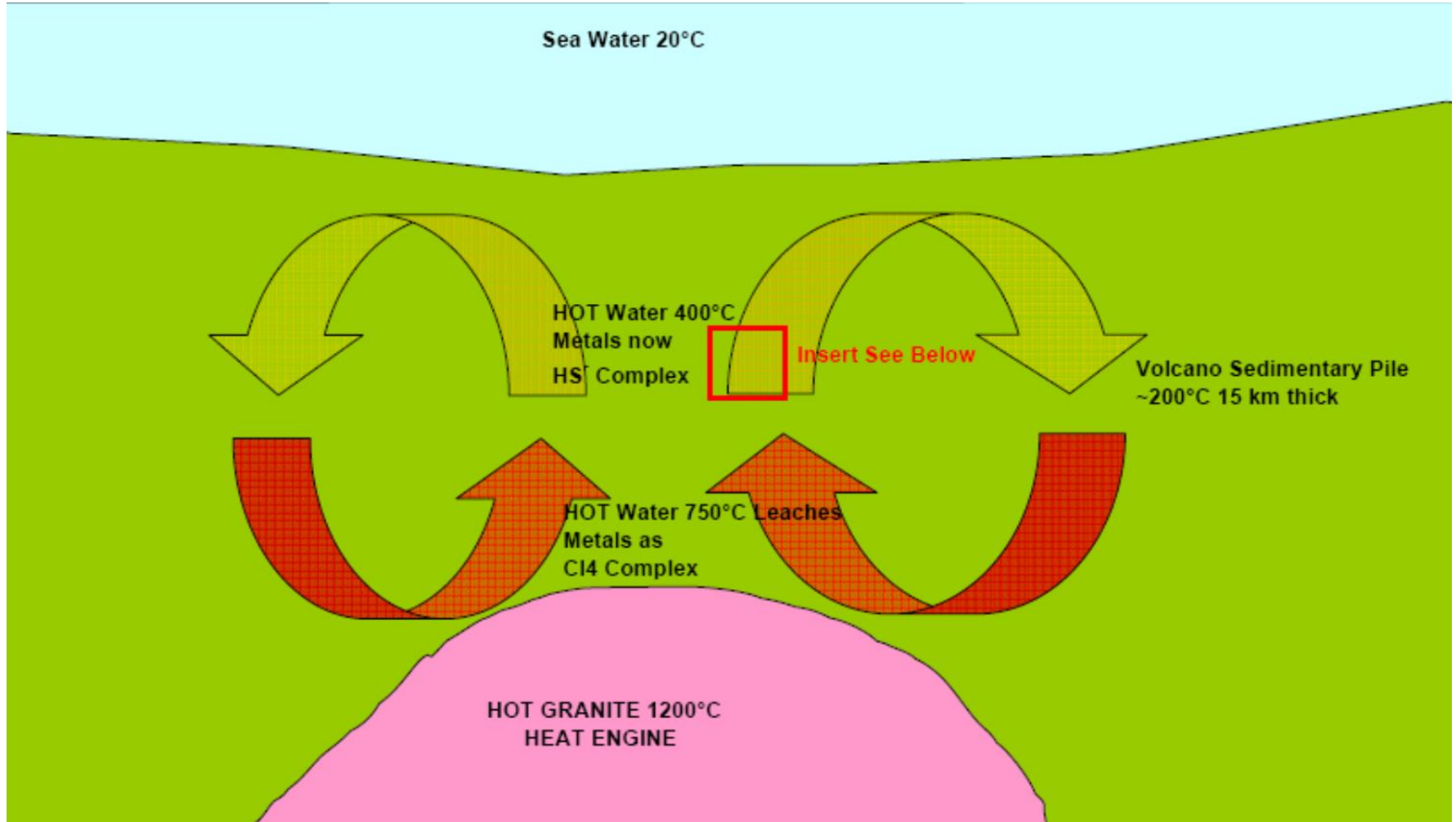
Jundee South Project - Gold

- New interest at Jundee



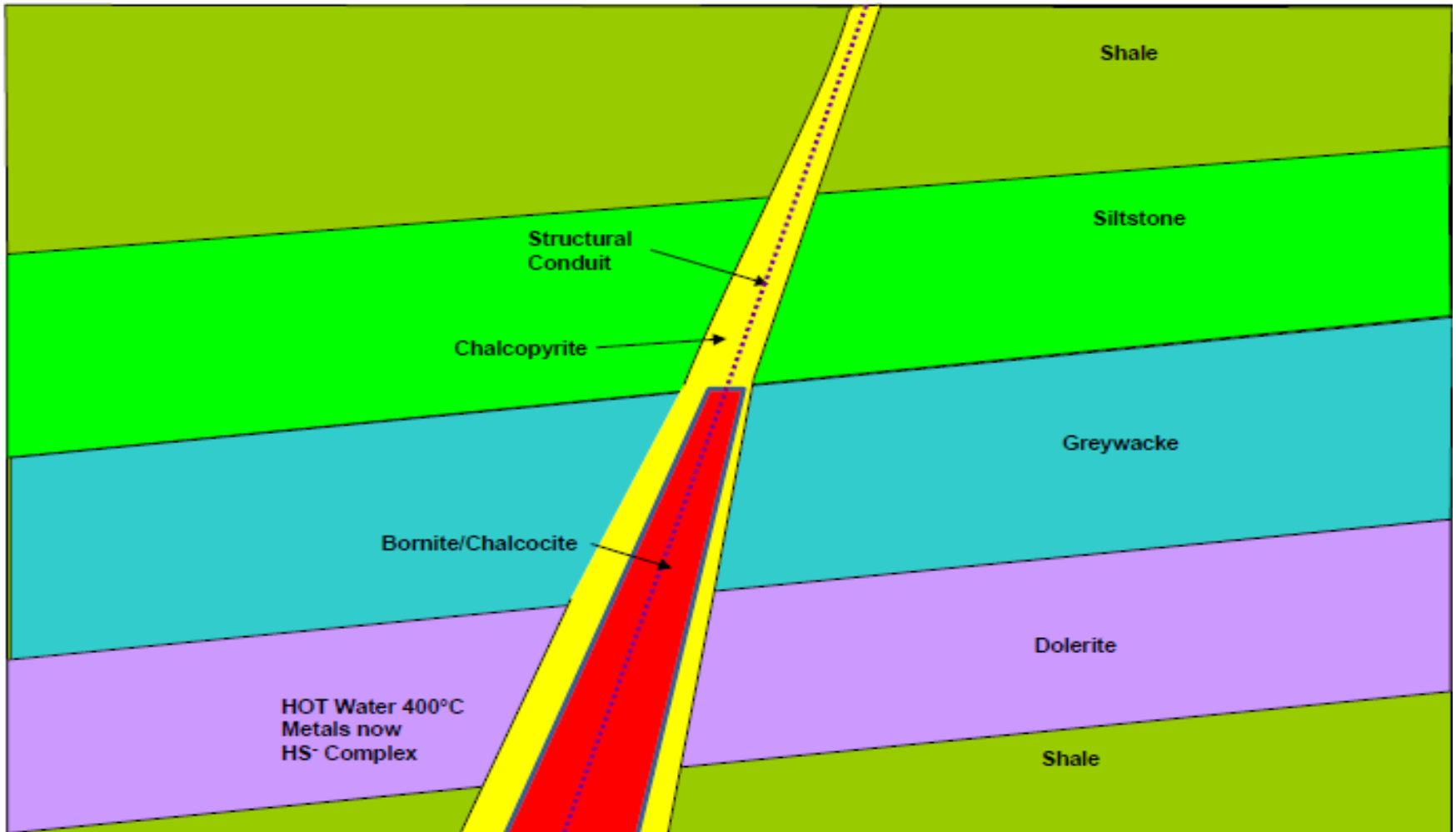


Aruma's Model for Metals – Au and Cu





The Copper Structure





Why copper in the Ashburton?

A GREAT ADDRESS

- EMERGING COPPER PROVINCE
- Hosts De Grussa, Nifty, Telfer, Yuneena, Thaduna
- HIGH GRADE DEPOSITS
- CRUSTAL STRUCTURES HOST DEPOSITS
- GOOD HERITAGE OUTCOMES POSSIBLE

A GREAT COMMODITY

- COPPER IS REQUIRED FOR INFRASTRUCTURE
- DEMAND PREDICTED TO INCREASE



Why copper at Bulloo Downs?

A GREAT LOCATION

- LONG POWERFUL STRUCTURES
- STRONG COPPER ANOMALIES
- UNDEREXPLORED OR IGNORED
- CLOSE TO INFRASTRUCTURE
- FRIENDLY PASTORALIST

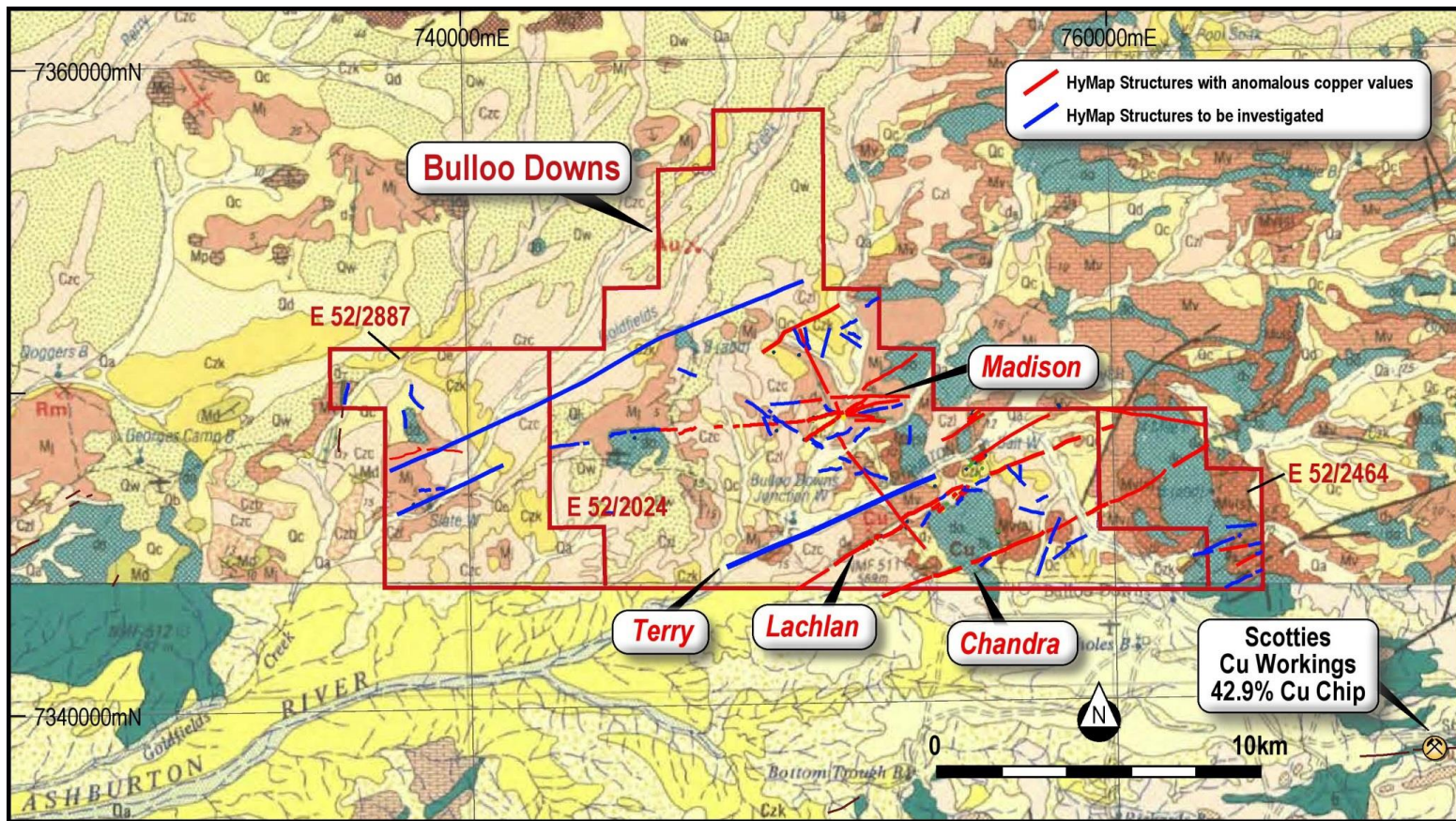
A GREAT PROJECT

- LOW ENTRY COST
- SPEND \$1.1M- 3yr FOR 90%
- GOOD EXPLORATION RESPONSE
- HYMAP RESPONSIVE
- SUCCESS IN GEOCHEMISTRY AND DRILLING
- A GOOD LAND PACKAGE
- CONTROL OF EXTENSIONS



Bulloo Downs Project-Stage 1

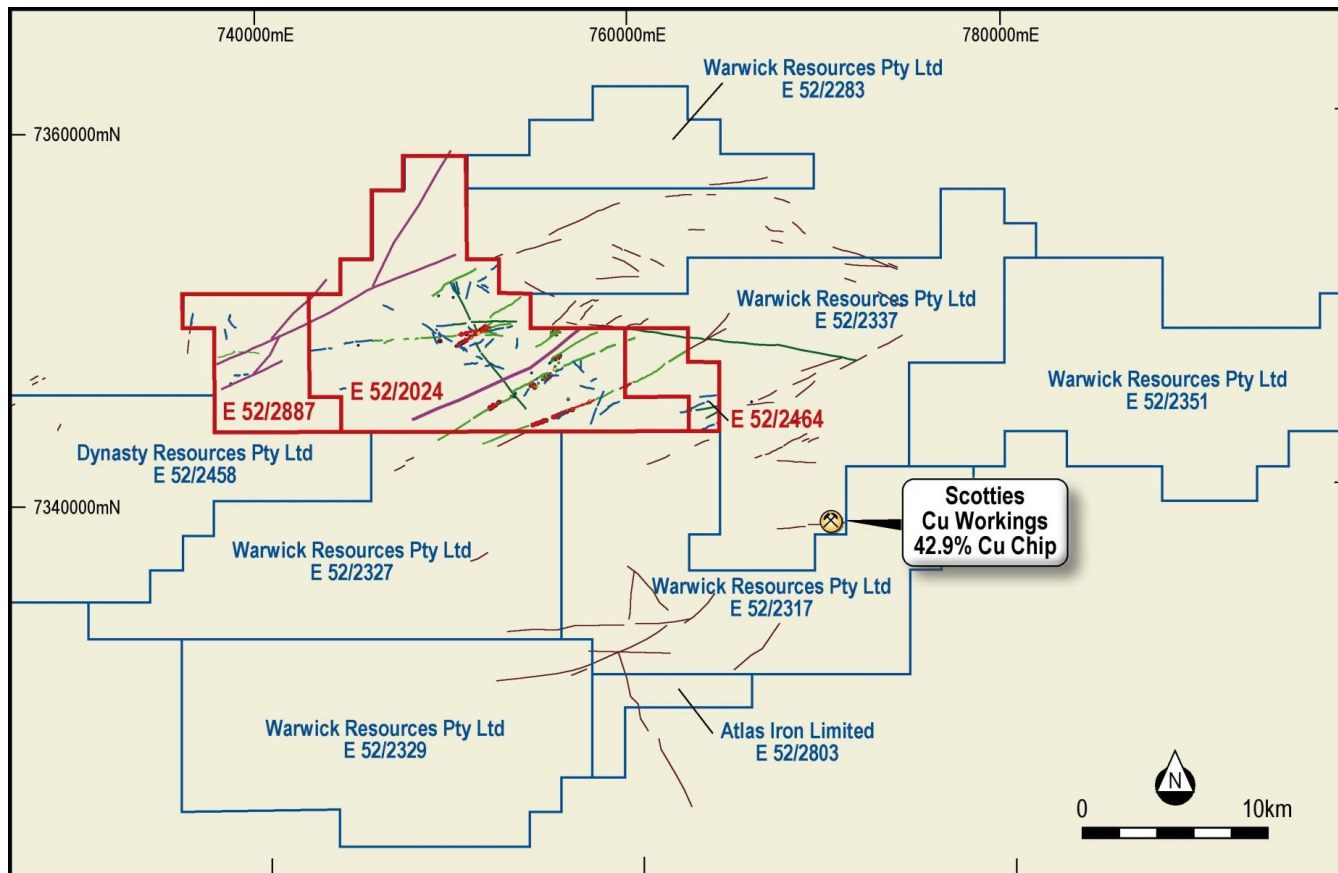
An exciting 218 km² copper project





Bulloo Downs Project-Stage 2

Now an exciting 1296 km² copper camp



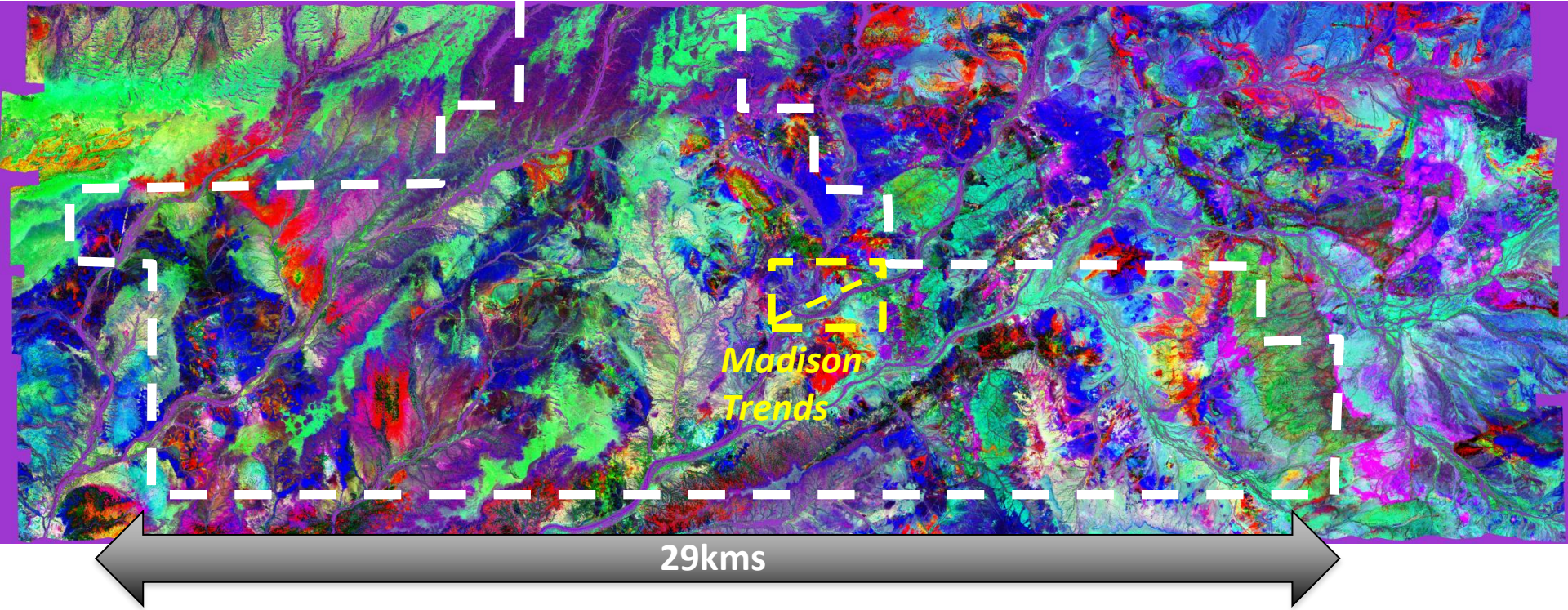


Bulloo Downs Project progress

- A **new** copper camp secured 1296km²
- Rock Chips up to **37.9% Cu** (Lachlan) and **42.9% Cu** (Scotties)
- **4m at 2.2% Cu** in first pass drilling program (Madison)
- **8 of 14** holes hit mineralisation (every line)
- HyMap alteration **over 150km** in multiple zones
- **Hydrothermal** alteration and mineralisation
- **Similarities to Thaduna - Green Dragon:**
- In reactive sediments over a hot granitic basement on deep structures



Hymap image of Bulloo Project

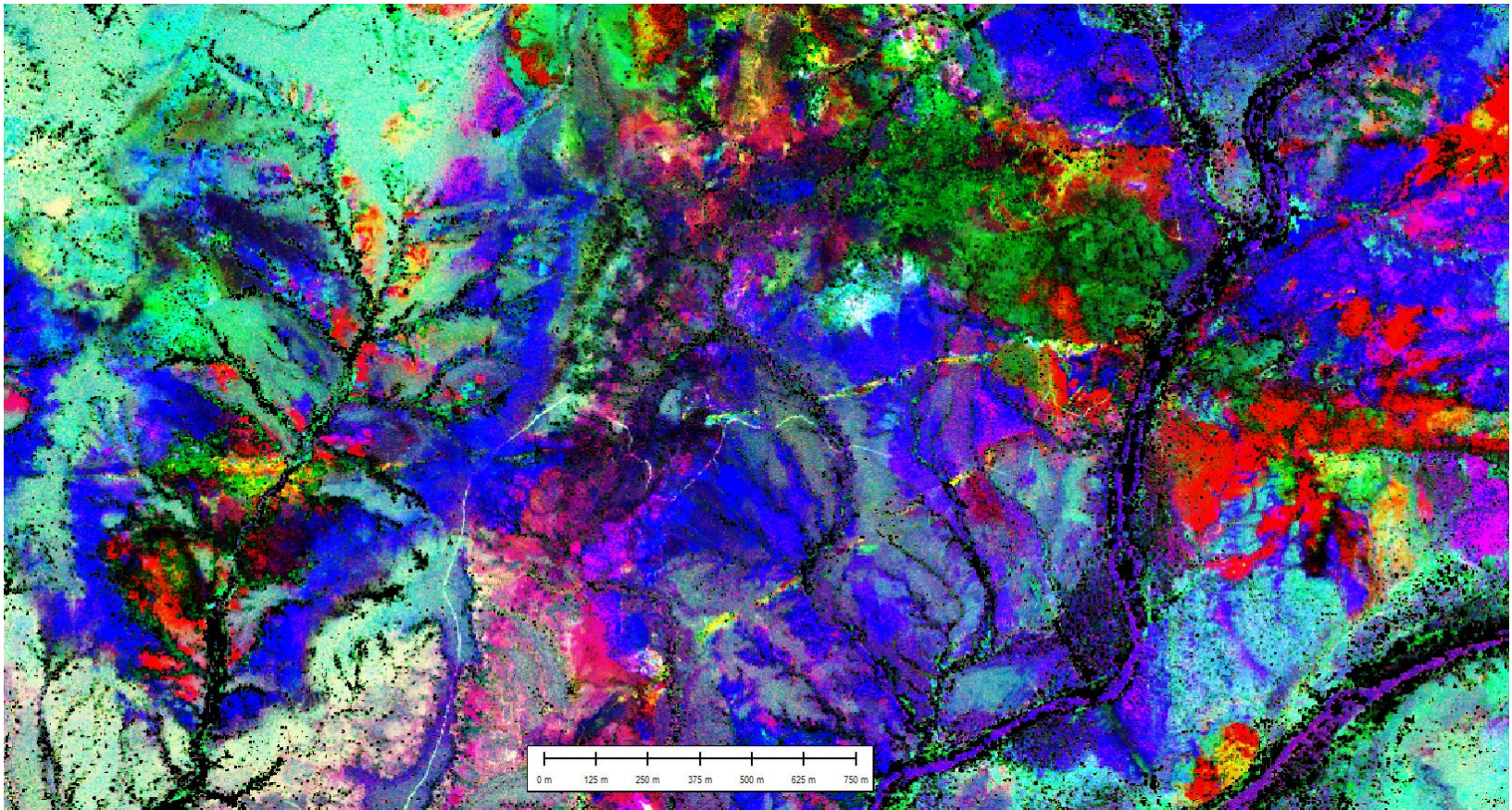


- HyMap gives Structure ✓
- Sampling gives high Copper ✓
- First drilling hits 4m @ 2.2% Cu ✓



Hymap image of drilled area

Madison Trends – Bulloo Project





Gossan- Madison East

6-42% Copper in surface gossan (In Booth 6)





Exploration and development

- Rock chip and mapping gets **high Cu values (January- March)**
- **4m at 2.2% Cu** in first pass drilling program **(March)**
- All drilllines hit copper anomalism **(March)**
- HyMap alteration over 80km sampled **(May)**
- Heritage survey completed over 15km of anomalies **(May)**
- Additional 900km² optioned **(Yesterday)**
- HyMap booked over surrounding areas **(June)**
- Further mapping and sampling underway **(Now)**
- HyMap flown in July
- Follow up drilling planned **(July-August)**

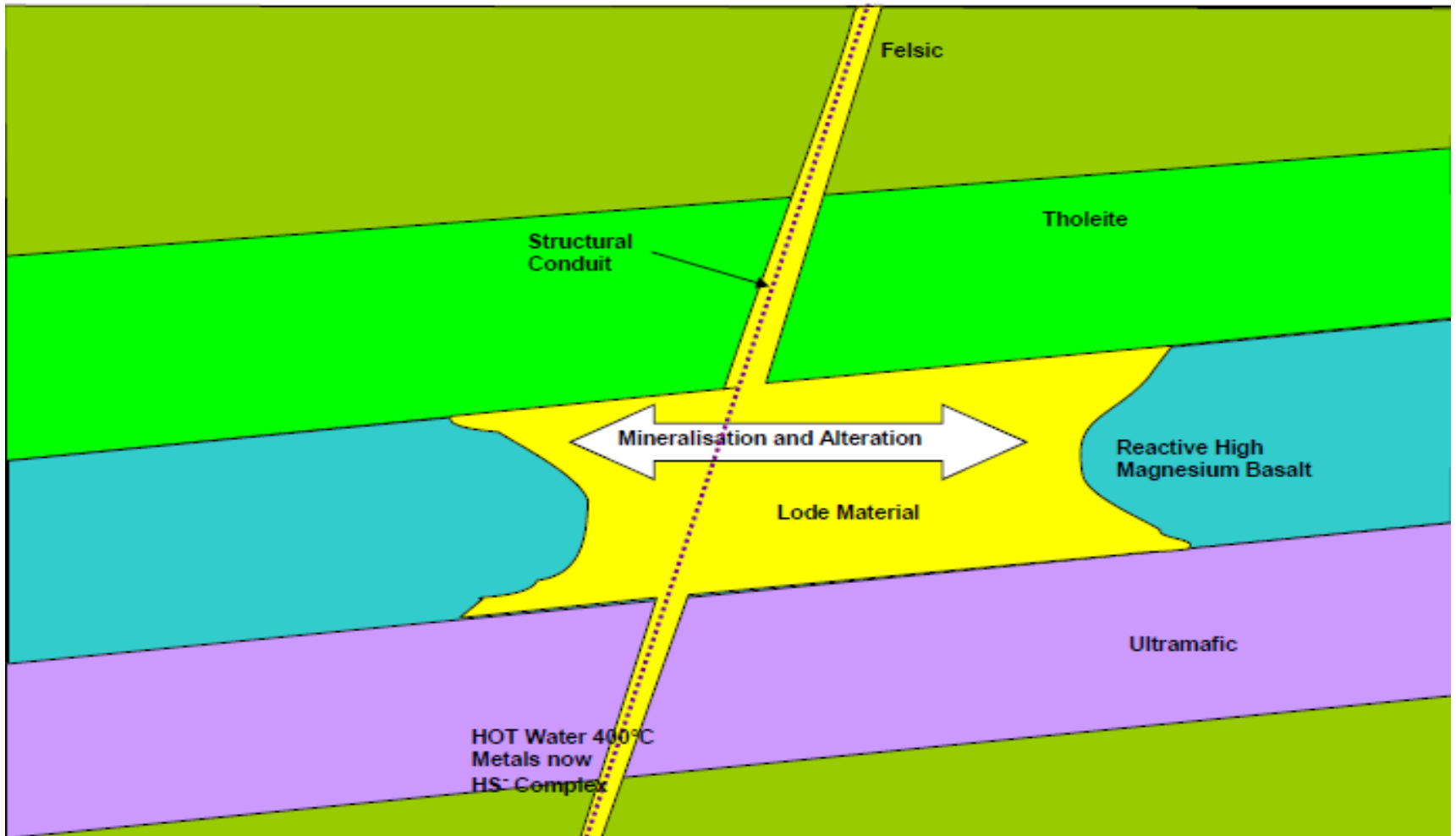


Aruma's gold projects

- Kalgoorlie and Wiluna
- Great addresses with:
 - Grade and thickness
 - Virgin projects
 - Proven gold endowment
 - Ready to drill
 - Close to infrastructure.



The Gold Structure





Proven Gold Provinces

Grade and thickness = powerful systems

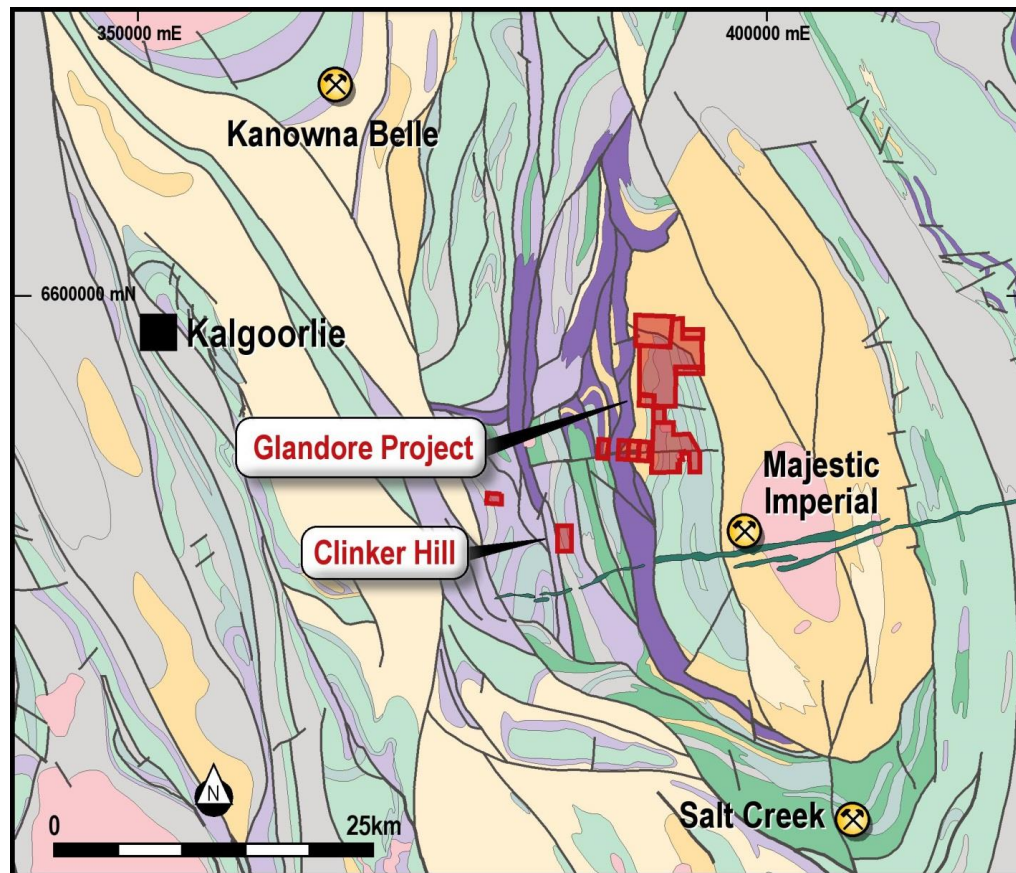
- **Kalgoorlie**
~50M ozs
- **Kanowna Belle**
~6M ozs
- **Salt Creek-Majestic**
~1M ozs
- **Jundee**
~7M ozs

PROJECT	Intersections	Grade	From
GLANDORE	10m	10.27 g/t Au	58m
	8m	10.4 g/t Au	18m
	9m	4.22g/t Au	13m
	5m	4.3g/t Au	60m
JUNDEE	4m	15.37/t Au	7m
	6m	3.44g/t Au	18m
	4m	4.84g/t Au	21m



Glandore Gold Project

40km east of Kalgoorlie

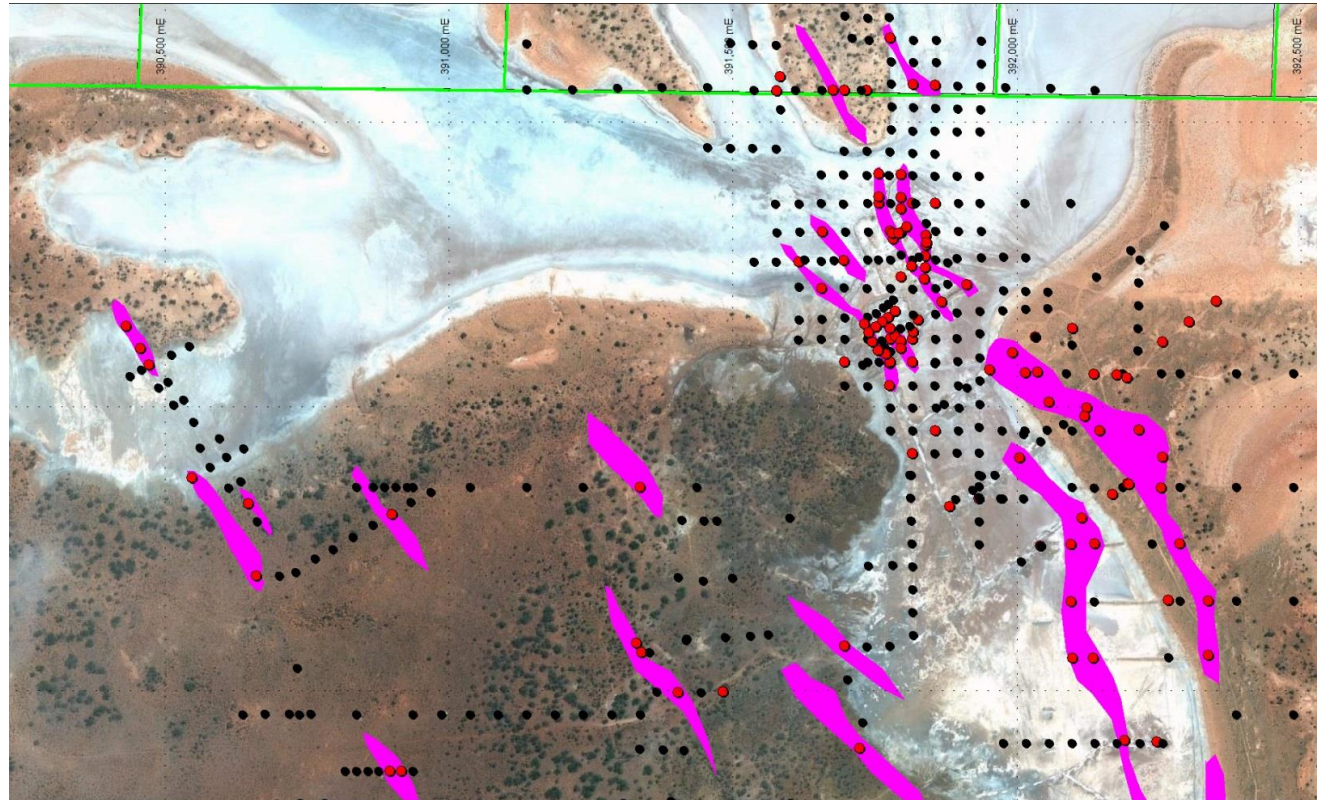




Glandore drilling targets

STRONG DEFINED SYSTEMS

- mineralisation in Magenta >1g/t
- No heritage issues

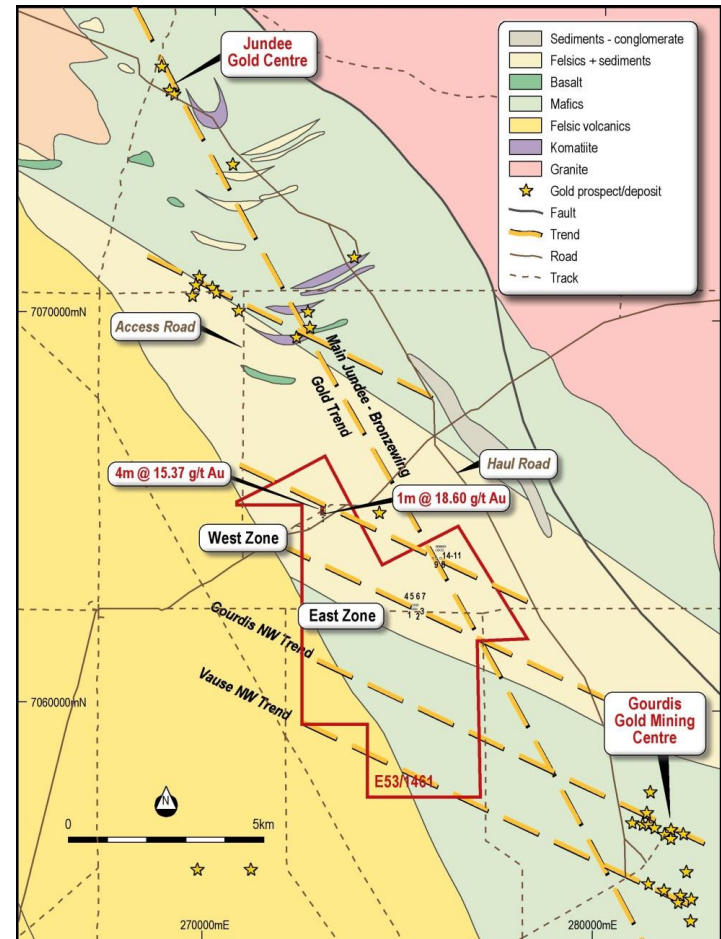


• Red Dots >1g/t



Jundee South Gold – a virgin discovery

- Located 60km from Wiluna
- 2.5km from Jundee haul road
- 25km from Jundee Mine
- 3 major lineaments
- HyMap anomaly on discovery
- RC drilling completed at Marks





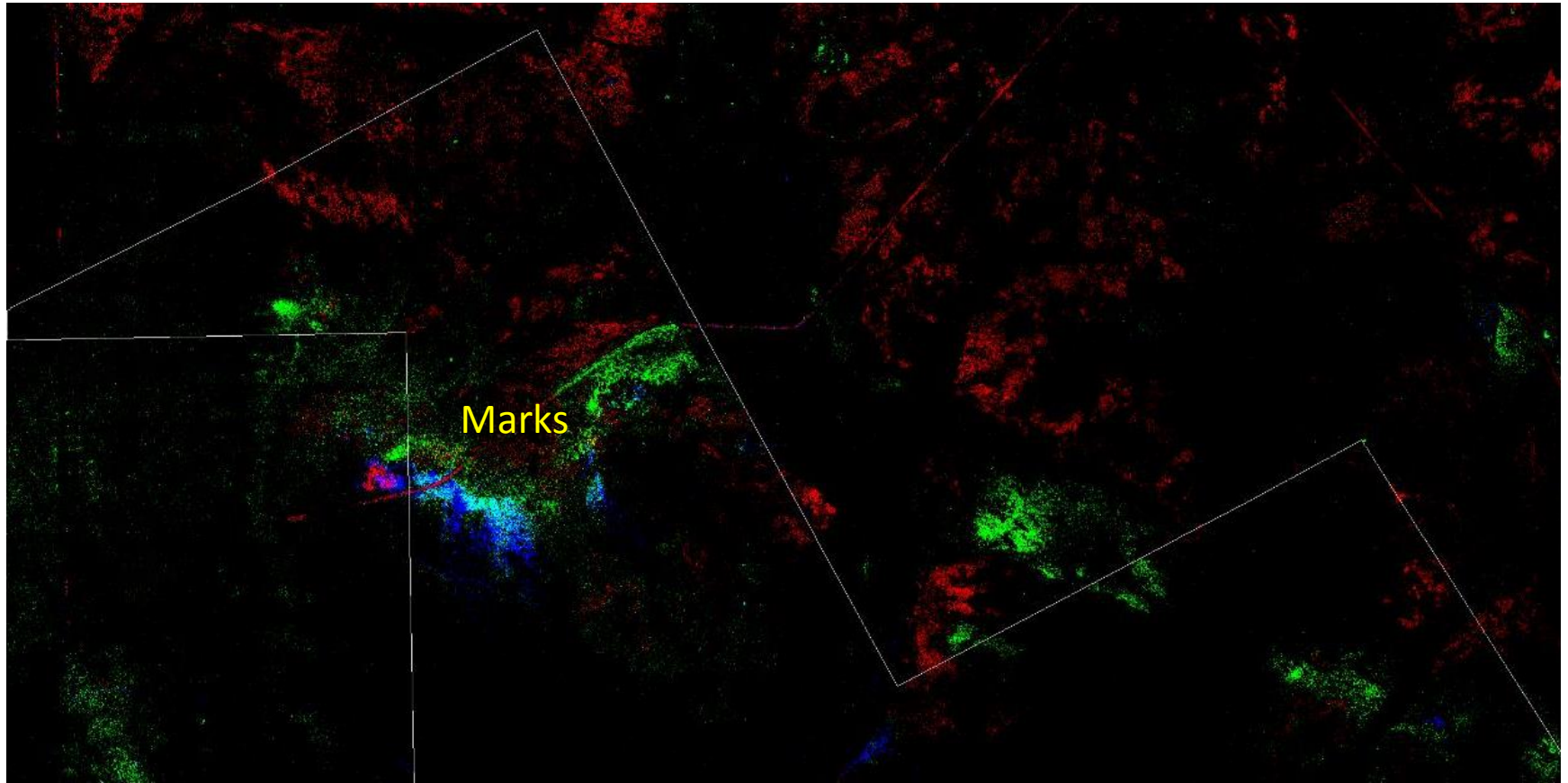
RC drilling results from Marks

Drilling results show thickness and grade

RC	Dip/Az	GDA94	GDA94	Depth	Depth	Av'ge	Intercept
Hole	Degrees	Easting	Northing	From	To	Au g/t*	m
MRC08	-60/90	272982	7064899	24	37	0.67	13
			inc	33	37	1.81	4
			inc	34	36	3.45	2
MRC10	-60/065	272947	7064947	5	15	0.46	10
			inc	11	12	1.6	1
				47	59	1.85	12
			inc	52	58	3.44	6
			inc	52	53	15.3	1
MRC11	-60/330	272980	7064977	14	30	1.22	16
			inc	16	19	3.15	3
MRC12	-60/330	272949	7064955	36	41	0.83	5
			inc	38	40	1.4	2
MRC13	-60/330	272915	7064931	49	52	0.51	3
			inc	49	50	1.09	1




Structure and alteration minerals



- Alteration on structure stands out through cover
- **Red = Goethite**, **Green = Chlorite** and **Blue = Phengite**



Looking elsewhere on the lease

- Anomalies identified
- Previous work wide spaced
- New targets suggested 
- Geochem and HyMap work
- Drill gaps are on structures.

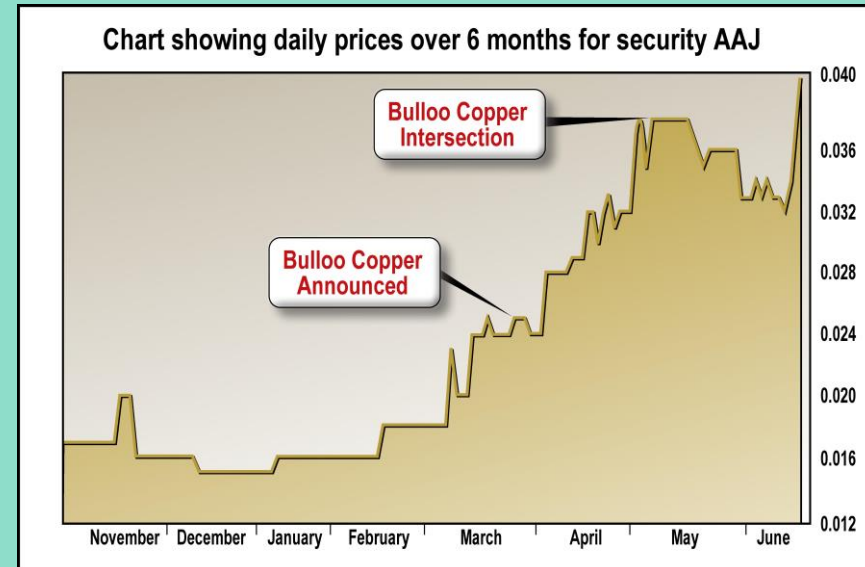




Investment Summary

- Exploring and drilling advanced projects
- Short time frame for discoveries
- Opportunity for commercial discoveries
- Adequately funded with \$2.6M cash
- 150M shares on issue
- Strong Broker support

In the right areas for the right reasons at the right time!



Please ask your questions now or visit us at Booth 6