



Suite 9, 5 Centro Ave, Subiaco WA 6008  
P.O. Box 457, West Perth, WA 6872, Australia  
Ph+61 8 9286 3045  
Fax: +61 8 9226 2027  
[info@birimiangold.com](mailto:info@birimiangold.com)  
ABN 11 113 931 105

9 July 2014

The Company Announcements Office  
Australian Securities Exchange Limited

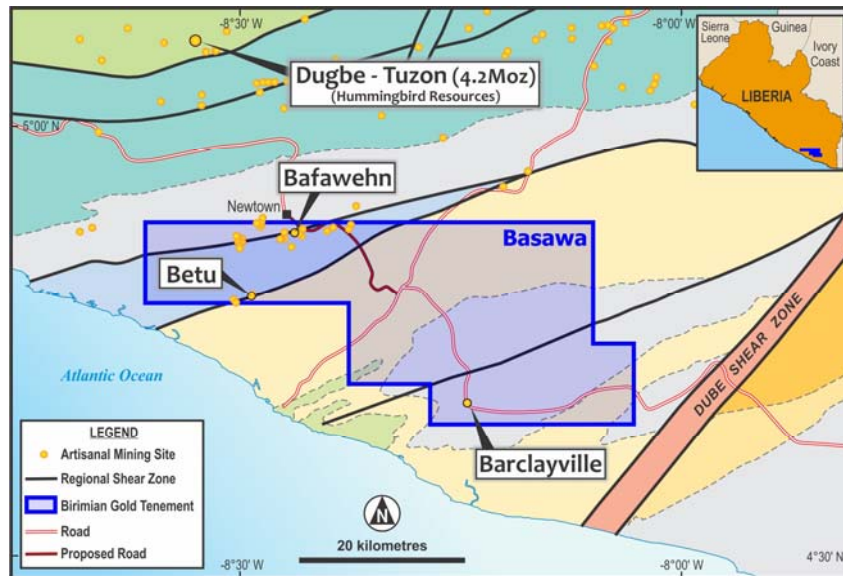
## **EXPLORATION PROGRAM AT THE BASAWA GOLD PROJECT, LIBERIA, SUCCESSFULLY COMPLETED.**

### **Highlights**

- **Comprehensive auger sampling programs completed over new gold targets at Before Camp, Newtown, and at the recently defined Toyon Prospect. Significant artisanal mine workings at all locations.**
- **Ongoing first pass exploration work to the west of the Toyon Prospect has identified previously undocumented artisanal mining sites.**
- **Mapping of artisanal mines show the prospective gold trend extends over 12km of strike and remains open to the west.**
- **Extensive soil sampling campaigns to infill and expand coverage at multiple early stage to advanced gold prospects within the Basawa Project completed.**
- **Analytical results pending.**

Birimian Gold Limited (ASX:BGS; "Birimian Gold", and the "Company") is pleased to announce the Company has successfully concluded this field season's aggressive and multifaceted exploration program at the Basawa Gold Project, in Liberia (Figure 1). The Company has dispatched a large number of samples to an independent laboratory with analytical results expected over coming weeks.

The exploration campaign included detailed auger and soil sampling investigating numerous prospects across the project with the aim of advancing high potential areas. Particular focus was given to developing potential drill targets along trend from advanced prospects at Before Camp and Newtown.



**Figure 1.** Birimian Gold's Basawa Gold Project in Liberia.

### **Before Camp and Newtown Prospects**

Auger sampling conducted at the Before Camp and Newtown Prospects has defined strongly anomalous gold zones which significantly upgraded the potential for high priority drill targets at these prospects. These anomalous gold zones occur in close proximity to an extensive large-scale alluvial gold mining field (see Bafawehn Area - Figure 1 and Figure 2).

Targeted follow up and infill auger sampling conducted as part of the recent field work at Newtown and Before Camp has now been completed. This program included a total of 80 auger holes drilled at a spacing of between 10m to 25m, on lines 100m apart. All samples have been dispatched to the laboratory and analytical results are expected by month end. Upon receipt of these results the Company will compile all available information and rank prospective targets in preparation for a reconnaissance diamond drilling program to investigate highest priority targets.

### **Toyan Prospect**

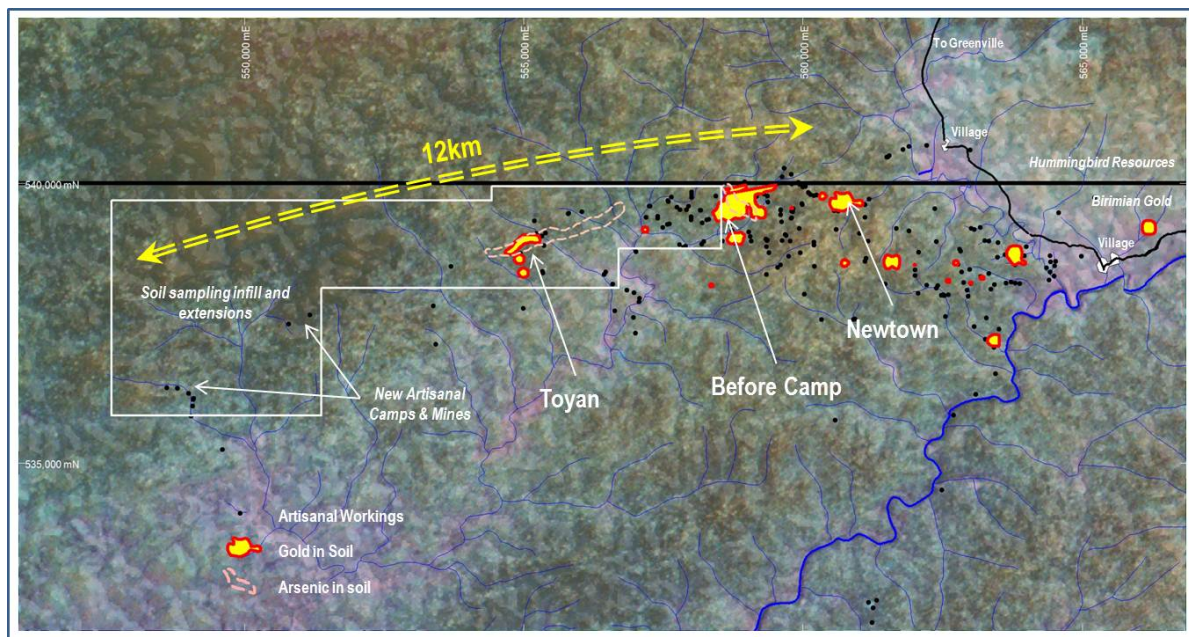
The Toyan Prospect<sup>1</sup> is situated approximately 4km to the west, along strike, from the Before Camp Prospect (see Figure 2). Significant alluvial gold workings are present within the broader prospect area. Soil geochemical sampling conducted this season at Toyan has delineated a zone of elevated gold and multi-elements over approximately 1,000m of strike.

A first phase broad spaced auger sampling program has been completed over a portion of the prospective trend identified at Toyan. This program comprised 28 holes drilled on broad 25m centres along lines spaced 200m apart. Analytical results from this auger sampling program are expected over coming weeks. The results from this work will form the base for additional infill sampling and subsequent drill targeting.

Field investigation to the west of Toyan has located numerous previously undocumented artisanal mining sites, suggesting excellent potential exists for the discovery of new gold zones along this trend (see Figure 2).

The Company's extension and infill soil sampling programs conducted this season have expanded sample coverage along the prospective Toyan – Before Camp Trend to over 12km of strike. In excess of 700 samples have been collected and are currently being prepared for dispatch to the laboratory. Analytical results are expected in early August.

<sup>1</sup> Toyan Prospect has previously been referred to as Noyan Prospect. Toyan is the name of a nearby village. The Prospect name has been amended to reflect the correct village name.



**Figure 2.** Plan showing target areas at Bafawehn. Prospect locations with gold in soil anomalies are shown over satellite/shaded DEM image.

Upon receipt and compilation of final analytical results the Company intends to develop a staged program of drill targeting and advanced prospect generation over the broader Before Camp-Toyan Trend. The field component of this program is expected to commence in September.

### Barclayville

The Company continued to expand its exploration efforts in the Barclayville-Ufaka area, situated in the south-east of the Basawa Project (see Figure 1). In this area, reconnaissance stream sediment sampling has defined a number of highly gold anomalous streams at Big Suehn Prospect and to the west of Barclayville.

Recent broad spaced reconnaissance soil sampling undertaken to follow up the stream sediment anomalies returned a number of subtle gold in soil anomalies in the Big Suehn area. The Company has now completed infill soil sampling in the anomalous area. Analytical results are pending. Upon receipt of final assay results the Company will determine whether suitable drill targets can be identified.

### Basawa Gold Project

The Basawa Gold Project covers a large area (1,000km<sup>2</sup>) of highly gold prospective terrain in southeastern Liberia. The 4.2Moz Dugbe-Tuzon Gold Camp (Hummingbird Resources) is situated on parallel geological structure approximately 25km to the north of the Basawa Project.

Birimian Gold has identified multiple early stage gold prospects in the Bafawehn and Betu areas, situated in the north-west of the Project area. Recent reconnaissance in the region around Barclayville, located in the south-east of the Project area, has identified an additional area of structural complexity and geochemical anomalism.

The Company has been aggressively advancing its highest priority targets at the Basawa Project during the current field season and recent significant results have motivated the Company to further extend its work program.

Yours sincerely



Kevin Joyce  
Managing Director  
Birimian Gold Limited

#### **Competent Persons Declaration**

*The information in this announcement that relates to exploration results is based on information compiled by or under the supervision of Kevin Anthony Joyce. Mr Joyce is Managing Director of Birimian Gold and a Member of the Australian Institute of Geoscientists. Mr Joyce has sufficient experience which is relevant to the style of mineralisation and type of deposit under consideration and the activity he is undertaking to qualify as a Competent Person as defined in the 2012 Edition of the "Australasian Code for Reporting of Exploration Results. Mr Joyce consents to the inclusion in the report of the matters based on his information in the form and context in which it appears.*

#### **Previous Reported Results**

*There is information in this announcement relating to previous Exploration Results at the Basawa Project. The Company confirms that it is not aware of any new information or data that materially affects the information included in the original market announcement and that all material assumptions and technical parameters have not materially changed. The Company confirms that the form and context in which the Competent Person's findings are presented have not been materially modified from the original market announcement.*