

15 July 2014

ASX/MEDIA RELEASE

ABN: 57 126 634 606  
Phone: +61 (7) 4032 3319  
info@cstdtin.com.au

ASX CODE: CSD



## ABOUT CSD

Consolidated Tin Mines Limited is an Australian Listed tin focused company developing a large scale tin project at Mt Garnet in the lower Herberton Tinfield in north Queensland



## CAPITAL STRUCTURE

Snow Peak	25.4%
Ralph De Lacey	6.5%
Beacon Minerals	5.9%
Geocrystal	3.6%
John Sainsbury	3.1%



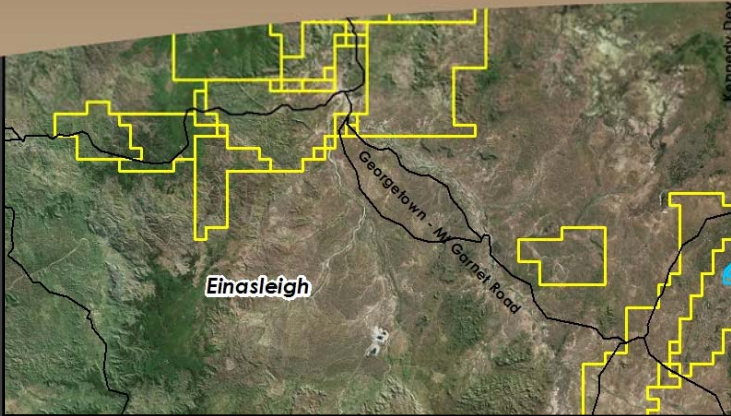
## OBJECTIVE

To become Australia's premier tin producing company



## STRATEGY

To develop and establish tin production by 2015 and focus on increasing mine life and production profile by developing other tin production opportunities within the broader Mt Garnet Tin Project area



## Snapshot:

Current CSD Share Price: **\$0.048**

Current LME Tin Price: **US\$21,990**

Detailed information at  
[www.cstdtin.com.au](http://www.cstdtin.com.au)

## Consolidated Tin Mines interest in Significant exploration investment project BRR Media webcast

CONSOLIDATED TIN MINES LIMITED (ASX: CSD) has released a webcast with the following details:

*Title:*           **Signing of exploration project MOU with Wanguo International Mining Group**

*Speaker:*     John Banning, Managing Director, Consolidated Tin Mines

Access this webcast at [www.brrmedia.com/event/124595](http://www.brrmedia.com/event/124595)

Access other CSD webcasts at [www.brrmedia.com/asx/CSD](http://www.brrmedia.com/asx/CSD)

Please visit the Company website at [www.cstdtin.com.au](http://www.cstdtin.com.au) & navigate to the "News Articles" tab & click "CSD Media", to access all past webcasts & interviews.

**ENDS**

Registered Office:

395 Lake Street,  
Cairns North, QLD, 4870  
Ph: +61 (0) 7 4032 3319

**15 July 2014**

For further information please contact:

John Banning  
Managing Director

M: +61 448 101 507

E: [john.banning@csdtin.com.au](mailto:john.banning@csdtin.com.au)

W: [www.csdtin.com.au](http://www.csdtin.com.au)

Ralph De Lacey  
Executive Chairman

M: +61 428 163 176

E: [ralph.delacey@csdtin.com.au](mailto:ralph.delacey@csdtin.com.au)

Darryl Harris  
Director

M: +61 419 908 645

E: [dh@csdtin.com.au](mailto:dh@csdtin.com.au)

## About Consolidated Tin Mines

Consolidated Tin Mines is an emerging ASX-listed (ASX: CSD) tin explorer and developer. Its major project is the Mt Garnet Tin Project approximately 180km south west of Cairns in northern Queensland, comprised of the Gillian, Pinnacles and Windermere deposits. The project is located in an established mining area, in close proximity to mining and concentrating infrastructure. Consolidated Tin's objective is to develop the project into a major low cost, open pit tin mining operation processing 1Mt per annum to produce approximately 5,000 tonnes p.a. of tin in concentrate, commencing with key deposits, Gillian and Pinnacles. On completion of a favourable DFS later in 2014, Consolidated Tin's strategy will be to develop and establish tin production in 2015 and focus on increasing mine life and production profile by developing other tin production opportunities within the broader Mt Garnet Tin Project area.