



Date: 31 July 2014

QUARTERLY ACTIVITIES REPORT ENDING 30 JUNE 2014

HIGHLIGHTS

- Ishine has completed a drilling program on the Narembeen project - tenement E70/3880 and Halls Creek project - tenement E80/4450
- Drilling results pending

Exploration

Narembeen Project (E70/3880) Drilling Program

During the quarter, Ishine International Resources Ltd (Ishine) has completed a one hole diamond drill hole, Hole ZK1 was drilled to a depth of 200m in our Narembeen project. The drilling on E70/3880 was completed towards the end of the quarter. Currently geological consultants are compiling the drilling results, which will be released in due course.

Tenement E70/3880 is located 65km SW of Southern Cross, 35km SE of Burracoppin, and 20km east of the town of Muntadgin in the south of Meriden, part of the West Australian Wheat Belt. The tenement contains 70 graticule blocks and covers an area of 225km². E70/3880 is situated within the Lake Grace Terrane and covers a northerly striking magnetic feature indicating mafic lithologies. Granite and felsic to mafic granulites and gneisses occur in scattered outcrops and sub crops throughout the farm land.

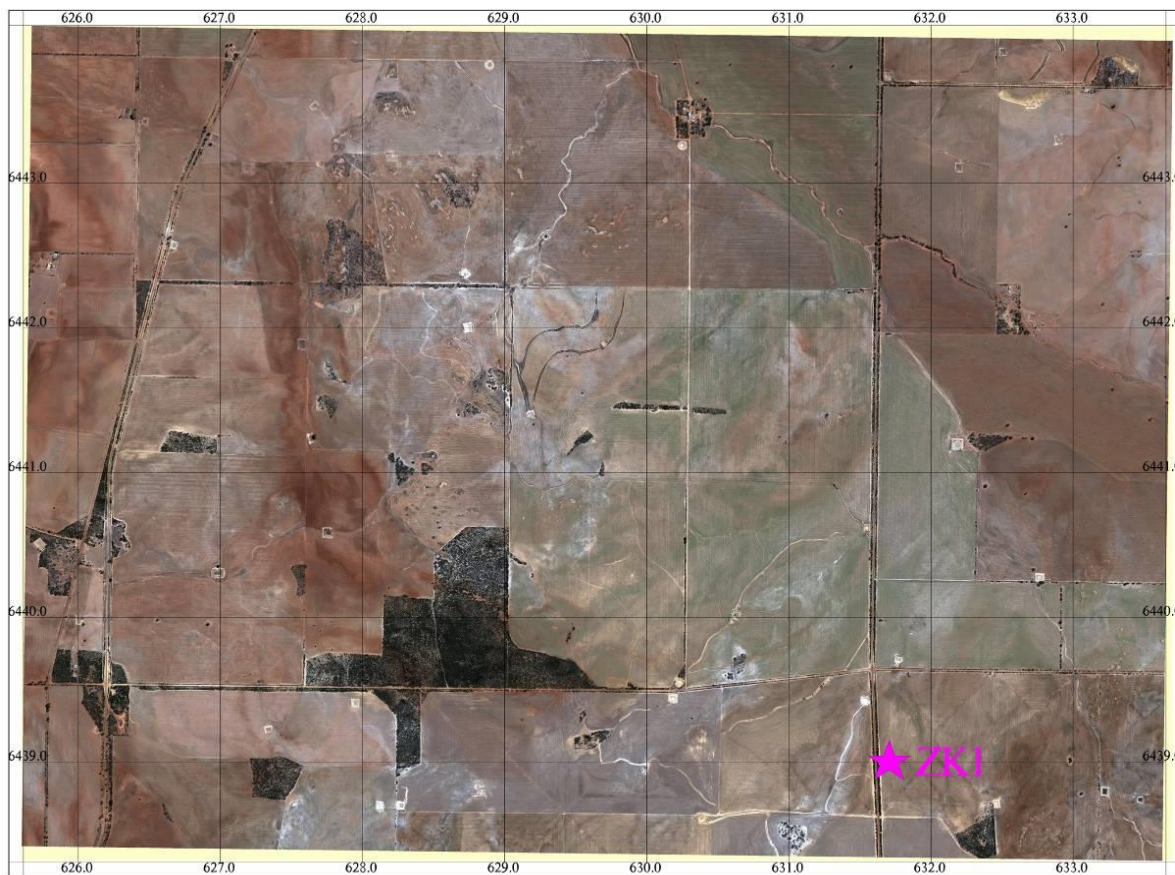
Table 1 drilling details

Number	Coordinates (MGA Zone 50)			dip	depth(m)
	Easting	Northing	azimuth		
Zk1	631706	6438999	110	60	200



Figure 1 Drilling map for Narembeen E70/3880

Map Of Narembeen
 Scale 1: 10000



Legend

ZK1 ★ Holes location and ID

— Tracks will be built

Dill Hole ID	Coordinates(MGA Zone50)				
	North_X	East_Y	azimuth(°)	dip(°)	depth(m)
ZK1	6438999	631706	110	60	200



Halls Creek Project (E80/4450) Drilling Program

During the quarter, Ishine has also conducted and completed a ten diamond hole drill program. Over 1300 meters were drilled in our Halls Creek project. The drilling on E80/4450 has completed late in the quarter..

The core samples have been sent to a laboratory in Perth for analysis.

Figure2 Drilling site in Halls Creek project



Figure 3 Drilling at the Halls Creek project

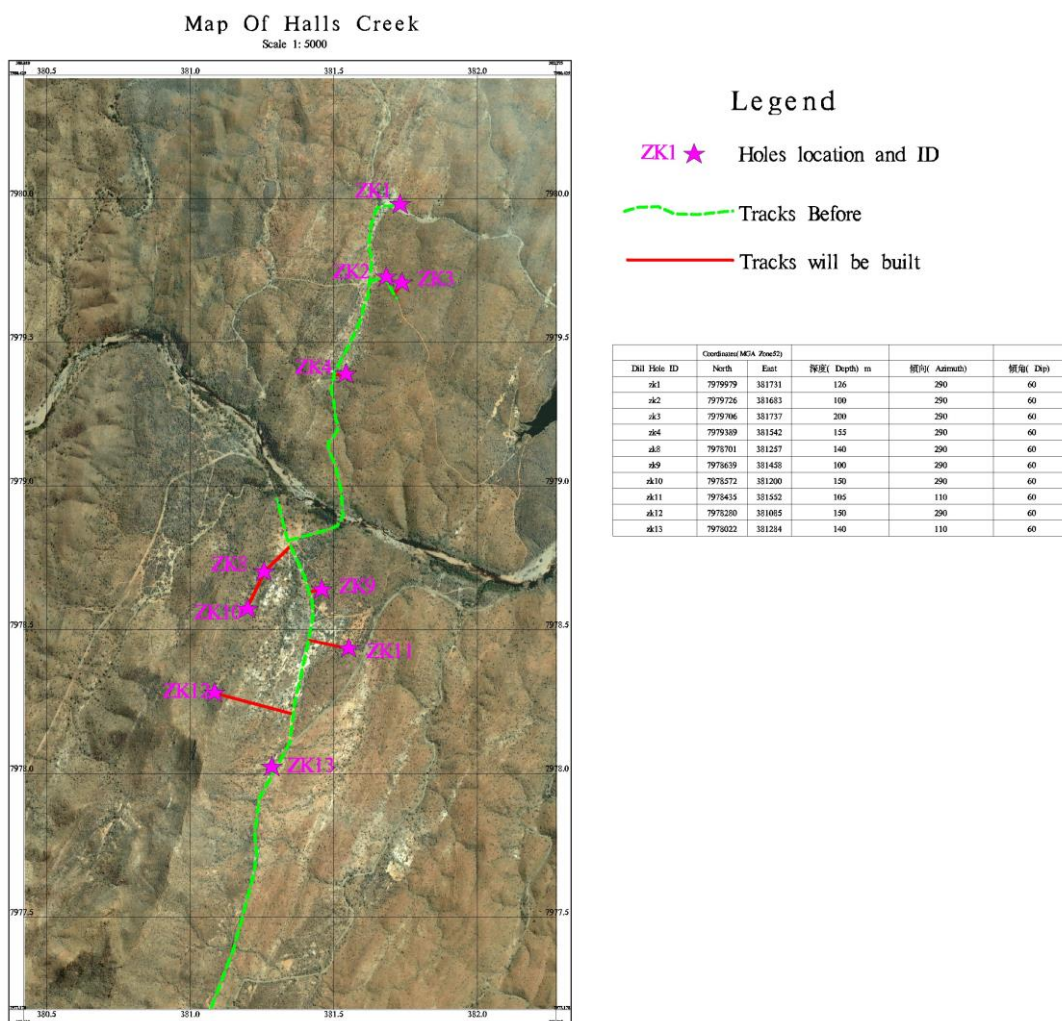


Table 2 Halls creek drilling details

Dill Hole ID	Coordinates(MGA Zone52)				
	Northing	Easting	(Depth) m	(Azimuth)	(Dip)
zk1	7979979	381731	126	290	60
zk2	7979726	381683	100	290	60
zk3	7979706	381737	200	290	60
zk4	7979389	381542	155	290	60
zk8	7978701	381257	140	290	60
zk9	7978639	381458	100	290	60
zk10	7978572	381200	150	290	60
zk11	7978435	381552	105	110	60
zk12	7978280	381085	150	290	60
zk13	7978022	381284	140	110	60



Figure 4 Drill hole location map for Halls Creek E80/4450



For further information please contact:
Leonard Math | Company Secretary
T: +61 8 6142 5088

MEDIA RELEASE

Ishine International Resources Ltd



Ishine
 兴盛国际

1187 Hay Street
 West Perth, WA 6005
 Australia

T: +61 8 6142 5088
F: +61 8 9200 5638
W: www.ishineresources.com
E: admin@ishineresources.com



Tenement Information

State	Licence Number	Status	Locality
WA 1804km ²	E 80/4478	100% Ishine	HALLS CREEK
	E 70/3880	100% Ishine	NAREMBEEN SHIRE
	E 80/4450	100% Ishine	HALLS CREEK
	E 80/4448	100% Ishine	HALLS CREEK SHIRE
	E 08/2222	100% Ishine	GASCOYNE
	E 77/1786	100% Ishine	MERREDIN, NAREMBEEN AND YILGARN
	E 37/1073	100% Ishine	LAVERTON
	E 39/1582	100% Ishine	LAVERTON
	E 37/1074	100% Ishine	LAVERTON
	E80/4639	100% Ishine	HALLS CREEK SHIRE
	E80/4619	100% Ishine	MOOLA BULLA, KIMBERLEY
SA 3,915km ²	EL4829	100% Ishine	OOOLDEA RANGE, SA
	EL4830	100% Ishine	MULGA WELLS, SA
	EL4831	100% Ishine	MULGARIA, NORTH OF OLYMPIC DAM
	EL4832	100% Ishine	WILLOURAN RANGES, SA
	EL4833	100% Ishine	WILLOURAN RANGES, SA
	EL4834	100% Ishine	WILLOURAN RANGES, SA
SUMMARY	17 Tenements		WA, SA and QLD