

# QUARTERLY ACTIVITIES REPORT

## JUNE 2014

General Mining Corporation  
ABN: 95 125 721 075

**ASX Code: GMM**

**Quoted Securities:**  
109,443,864 shares  
11,603,211 options

**Total Issued Capital:**  
134,310,160 shares  
32,369,877 options

**Share Price:**  
1.2 cents per share

**Market Capitalisation:**  
AUD\$1.6M

**Board of Directors**  
Mr Michael Wright  
*Chairman*

Mr Craig Readhead  
*Non-executive Director*

Mr Michael Fotios  
*Non-executive Director*

Mr Bob Wanless  
*Non-executive Director*

**Joint Company Secretary**  
Ms Karen Brown  
Mr Lindsay Colless

[www.generalmining.com](http://www.generalmining.com)

**Address:**

65 Burswood Road  
Burswood WA 6100

**Telephone:**

08 9227 1186

**Facsimile:**

08 9227 8178

## HIGHLIGHTS

- **Internal QAQC audit for compliance with JORC 2012 completed.**
- **Further planning of reverse circulation and diamond drilling program to test targets along the Marguaritta – Dorothy trend.**
- **Numerous targets identified from initial review of historic geochemical and mapping.**
- **Diamond drilling program designed to target the down-dip and plunge extensions of mineralisation at Dorothy below 80m.**

---

### **Chesterfield** (GMM 100%)

A peer review of identified targets and proposed field activities, including an internal audit of QAQC methods used for exploration data collection and management for compliance with ongoing JORC 2012 reporting requirements was completed during this period.

The internal review confirmed that drilling completed by GMM during 2013 along with historic drilling has confirmed that Chesterfield, which is 50km north-west of Meekatharra and 100 per cent-owned by General Mining, has strong potential for high-grade vein-hosted gold mineralisation.

Planning for follow up reverse circulation ("RC") and diamond drilling was finalised along with a review of geochemical/mapping data along the two kilometre long Marguaritta – Dorothy trend (Figure 2).

Numerous targets remain to be tested and will form part of the drilling plan currently being finalised

High-grade mineralisation intersected by previous RC drilling about 60m east of the Dorothy mineralisation and hosted by veining within mafic volcanics is yet to be tested down dip with diamond drilling.

No field activity this quarter, activities focused on completion of annual technical reporting.

**Mt Success** (GMM 100% or option to purchase 100%)

Following the promising results from the first stage of drilling at M58/72 the Company is planning to widen the exploration activities in 2014-2015 incorporating the newly acquired prospecting tenements into the Project.

Detailed geological mapping will be carried out together with geochemical sampling on a 50x200m grid covering both the Mt Success and Mt Success Extended options tenements.

Additional RC and diamond drilling is planned to follow in accordance with the results of geological and geochemical mapping.

An initial program of systematic rock chip sampling along the reef is planned to identify the distribution of gold along the structure.

The option tenements (Figure 3) include the strike extensions of the Mt Success Reef structure which has returned some anomalous gold values in last year's drilling assay results completed by General Mining Corporation. There is additional information that is yet to be verified, which also shows a number of old workings and costeans to the east and west of the Mt Success reef structure that may contain also contain anomalous gold grades.

**Mercury Hill**

*(Gold - GMM 100%)*

No field activity this quarter. A peer review of identified targets and proposed field activities was completed.

Activities focused on completion of annual technical reporting.

**Shoemaker**

*(Iron ore & manganese exploration - GMM 80% and Galaxy Resources Limited 20%)*

No field activity this quarter as activities focused on commencement of annual technical reporting.

**Mongolia - Uvs Basin Projects** *(Coal, potash & lithium - GMM 100%)*

During the quarter the Company continued with the shutdown of the Mongolian operations. The last remaining licence expired in June.



---

**For more information:**

Michael Fotios  
Director  
Tel: +61 8 6241 1888

Media:  
Read Corporate  
Paul Armstrong/Nicholas Read  
08 9388 1474

**COMPETENT PERSON:**

*The information in this report that relates to Exploration Results, Mineral Resources or Ore Reserves is based on information compiled by Mr Michael Fotios, who is a Member of The Australian Institute of Geoscientists. Mr Fotios is a director of General Mining Corporation Ltd and has sufficient experience which is relevant to the style of mineralisation and type of deposit under consideration and to the activity which he is undertaking to qualify as a Competent Person as defined in the 2012 Edition of the 'Australasian Code for Reporting of Exploration Results, Mineral Resources and Ore Reserves'. Mr Fotios consents to the inclusion in the report of the matters based on his information in the form and context in which it appears.*

FIGURE 1

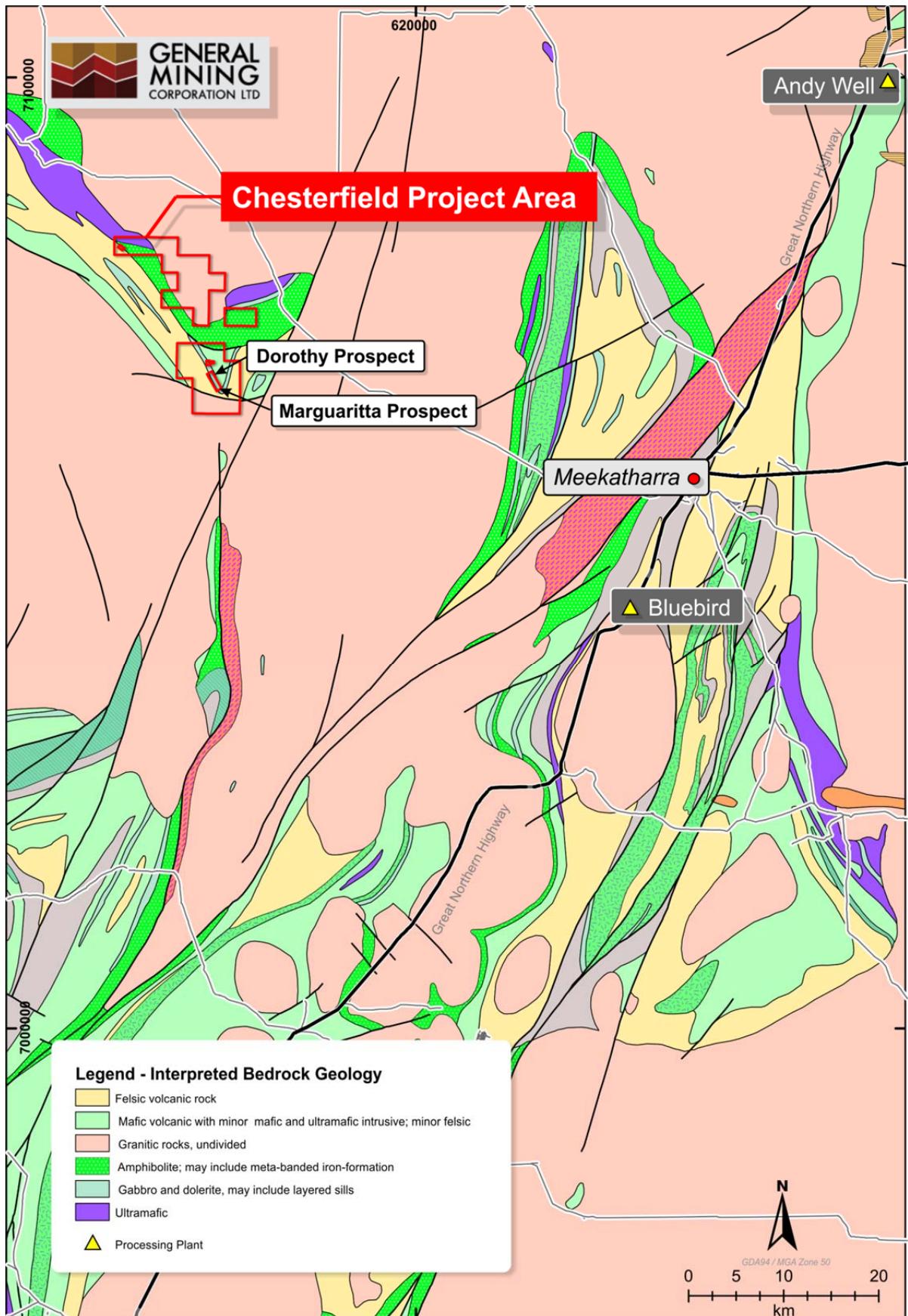


FIGURE 2

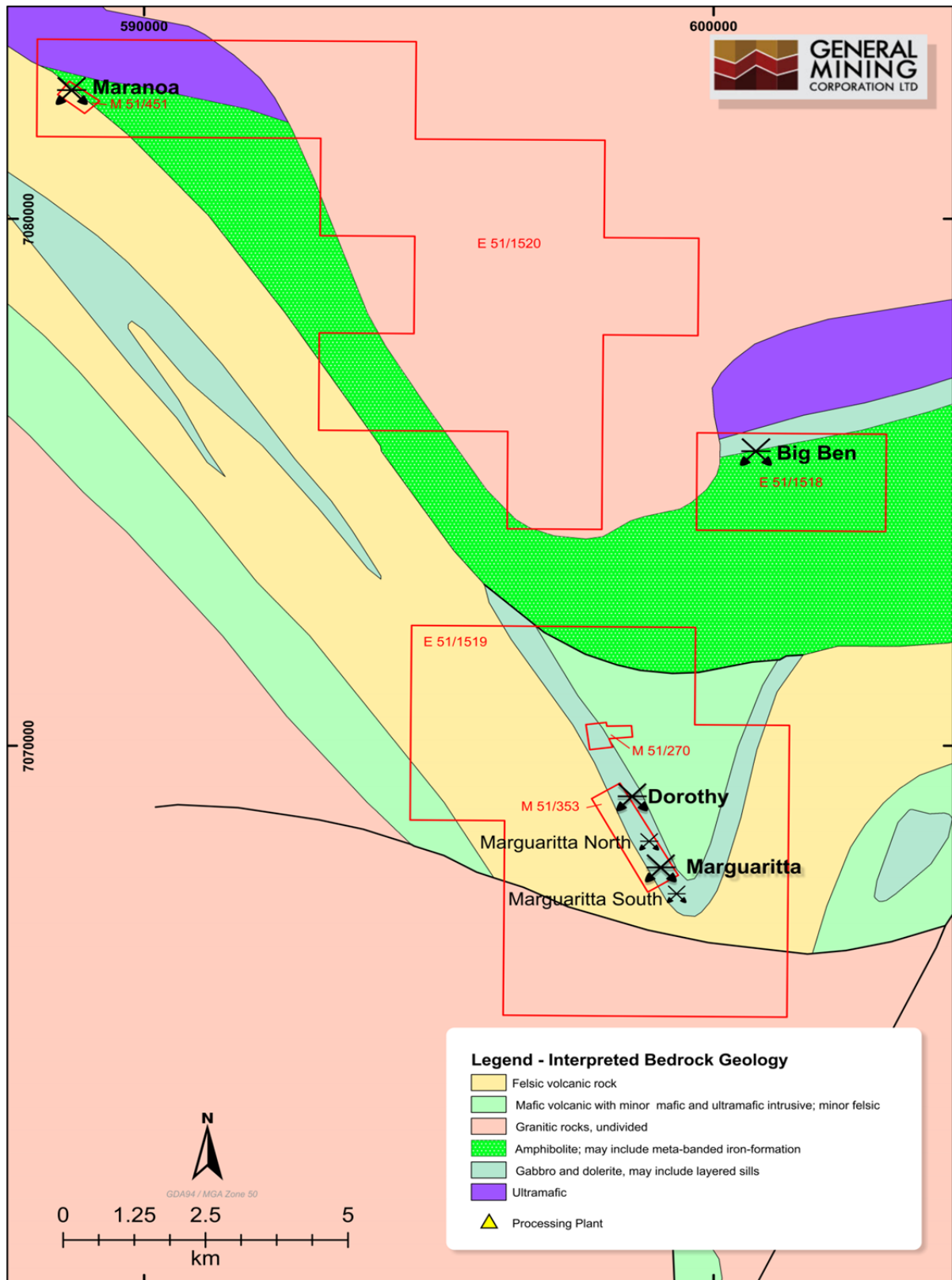
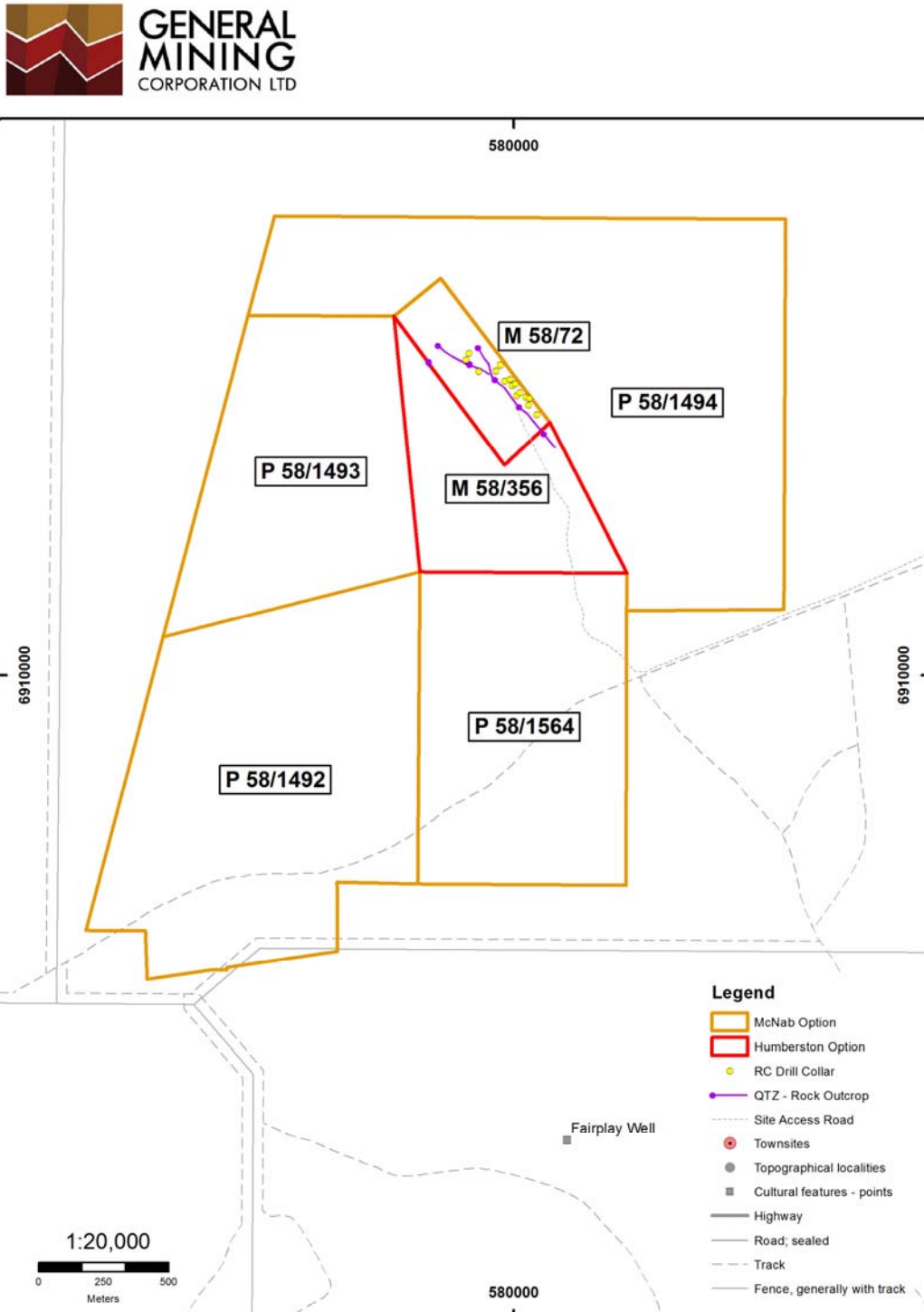


FIGURE 3



Name: MTS.PLN.TEN Locality 20k