



6 August 2014

ASX ANNOUNCEMENT

Investor Presentation

Attached is a copy of Namibian Copper's investor presentation: "Exploration and Development in Namibia".

Jay Stephenson
COMPANY SECRETARY

Namibian Copper NL | ACN 118 913 232 | ABN 52 118 913 232

Telephone: +61 8 6141 3500 | Facsimile: +61 8 6141 3599

Registered Office: Level 4, 66 Kings Park Road, West Perth WA 6005 | PO Box 52, West Perth WA 6872

www.namibiancopper.com.au



Exploration and Development in Namibia

ASX:NCO

August 2014

Disclaimer



This presentation has been prepared to provide information on Namibian Copper NL (NCO). It is not intended as an offer, invitation solicitation or recommendation with respect to the purchase or sale of any securities.

This presentation should not be relied upon as the sole representation of any matter that a potential investor should consider in evaluating NCO, its affiliates or any of its directors, agents, officers or employees do not make any representation or warranty, express or implied, as to or endorsement of, the accuracy or completeness of any information, statements, representations or forecasts contained in this presentation, and they do not accept any liability for any statement made in, or omitted from, this presentation.

Prospective investors should make their own independent evaluation of an investment in the Company.

Competent Persons Statement



The information in this presentation that relates to Exploration Results is based on information compiled by Mr Lachlan Reynolds. Mr Reynolds is a full-time employee of the Company and is a Member of the Australasian Institute of Mining and Metallurgy. Mr Reynolds has sufficient experience which is relevant to the style of mineralisation and types of deposits under consideration and to the activity which he is undertaking to qualify as a Competent Person as defined in the December 2012 edition of the Australasian Code for Reporting of Exploration Results, Mineral Resources and Ore Reserves (the JORC Code). Mr Reynolds consents to the inclusion of this information in the form and context in which it appears in this presentation.

The information in this presentation that relates to Mineral Resources or Ore Reserves is based on information compiled by Ms Kathleen Body, Principal Consultant Resources at Coffey Mining Johannesburg, registered as a Professional Natural Scientist with the South African Council for Natural Scientific Professions. Ms Body has sufficient experience which is relevant to the style of mineralisation and types of deposits under consideration and to the activity which she is undertaking to qualify as a Competent Person as defined in the December 2012 edition of the Australasian Code for Reporting of Exploration Results, Mineral Resources and Ore Reserves (the JORC Code). Ms Body consents to the inclusion of this information in the form and context in which it appears in this presentation.

Information in this presentation relates to previously released exploration results and mineral resources disclosed under the JORC Code 2004. It has not been updated to comply with the JORC Code 2012 on the basis that the information has not materially changed since it was last reported and is based on and fairly represents information reviewed and approved by Mr Reynolds and Ms Body.

Note that this presentation states Exploration Targets. The potential quantity and grade of the Exploration Targets are conceptual in nature. There has been insufficient exploration to define mineral resources and it is uncertain if further exploration will result in the delineation of a mineral resource.

Company Overview



- ▶ Namibian Copper (NCO) is a base metal development and exploration company with an advanced development project and two exploration assets in Namibia, southern Africa.
- ▶ NCO's flagship asset is the Ongombo Cu-Ag-Au project, located 45km NE from the capital city of Windhoek.
- ▶ The Ongombo deposit comprises JORC compliant total resources of 10.5Mt @ 1.6% Cu, 9g/t Ag and 0.3g/t Au (at a 0.6% Cu cut-off grade).
- ▶ A scoping study supports viability of the project as an underground mining operation.
- ▶ A review of the project suggests potentially economic mineralisation close to surface could support a near-term mine development, with mineralisation treatment potentially through an adjacent operating mill and concentrator.
- ▶ The Company has recently acquired other exploration projects that have potential for additional resources that could form the basis of satellite operations.
- ▶ The projects have excellent local infrastructure including road access, nearby power, water, services and accommodation.
- ▶ Namibia has prospective geology, is a mining-friendly jurisdiction with low sovereign risk.

Company Strategy



Namibian Copper holds a significant copper resource within a prospective belt with numerous known deposits and untested exploration potential.

The goal of the Company is to become a near-term copper producer taking advantage of its existing assets and building an increased resource base through further exploration and acquisition funded by operating cash flow.

The Company proposes:

- ▶ Assessment of mining and processing options at its Ongombo Cu-Ag project to increase the viability of a future operation and reduce CAPEX requirements.
- ▶ Drilling to advance the feasibility studies at the Ongombo deposit, including resource confirmation, metallurgical studies and extension of known higher-grade zones within the resource which are open down plunge and at depth.
- ▶ Exploration at nearby Ongeama Cu-Ag deposit and other project areas for additional resources within feasible trucking distance of a centralised processing plant.
- ▶ Evaluation and acquisition of other known copper deposits compatible with existing exploration and development assets.
- ▶ Completion of a feasibility study based on the preferred development options.

Corporate Overview



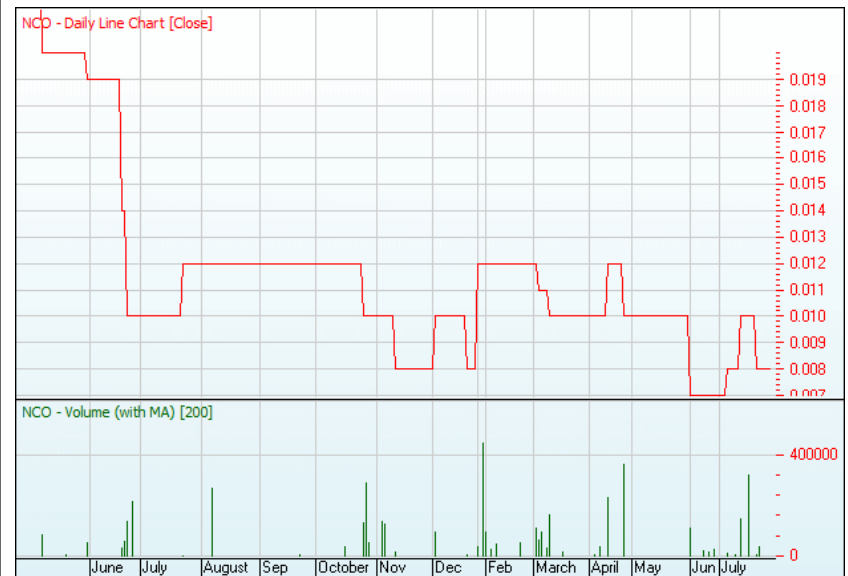
Capital Structure

ASX Code	NCO
Shares	73.8 million
Top 20 Shareholders	74.1%
Market Capitalisation	\$0.66 million
Options	Nil
Debt	Nil
Cash	\$50k (30 June 2014)

A fully underwritten, renounceable Entitlement Issue to raise up to \$1.55M is currently on offer to eligible shareholders, and closes on 26 August 2014.

Patersons Securities have agreed to underwrite the Issue . Present and proposed Directors have all agreed to sub-underwrite the issue.

Share Price Performance



Daily NCO share price over 1 year. Source: ASX

Board & Management



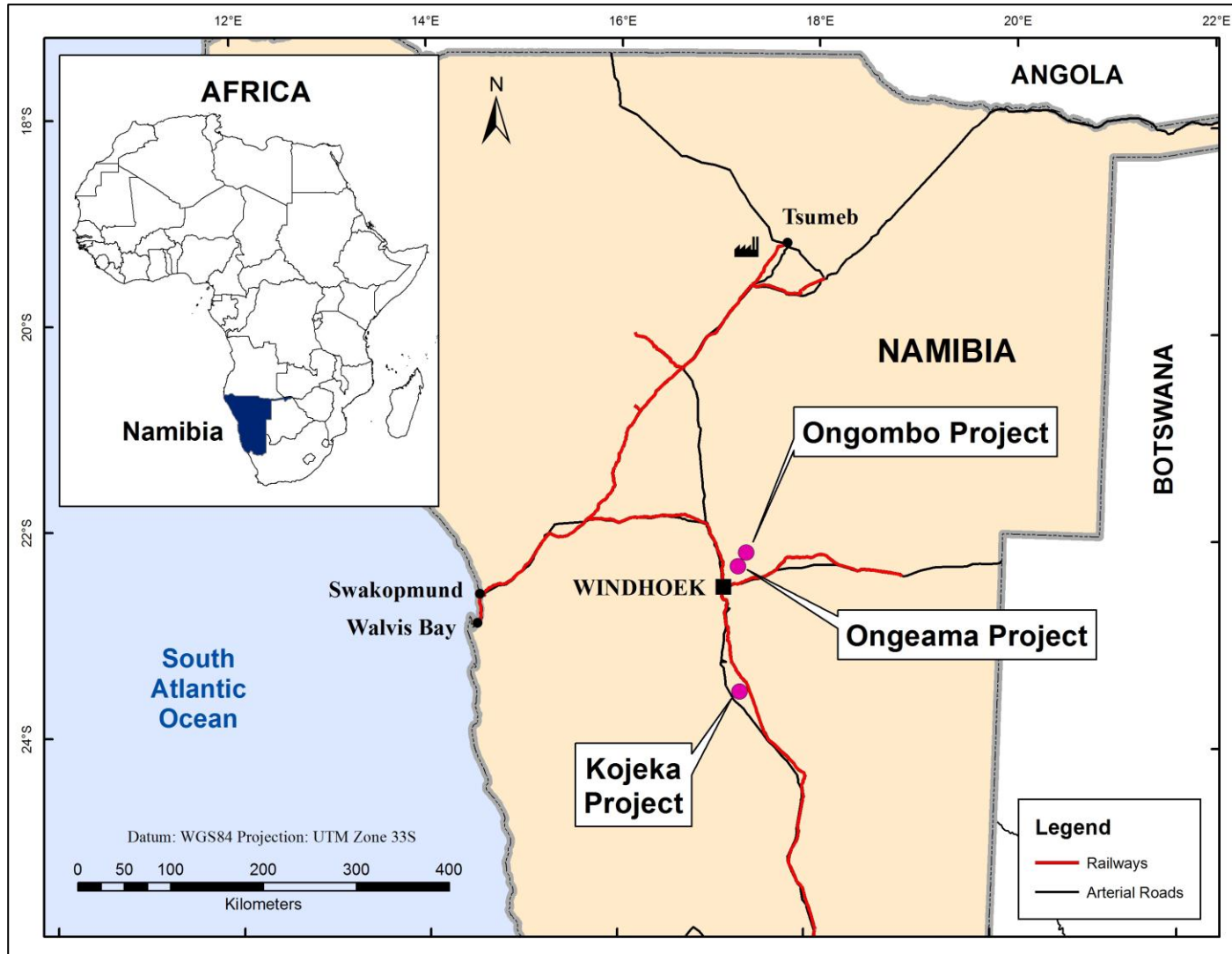
Directors

Managing Director	Lachlan Reynolds	Geologist with over 23 years exploration, development and mining experience on a range of international projects. Previously worked in several African countries, including Zambia, Botswana and Kenya.
Non-Executive Director	Greg Hall	Geologist and consultant, former Chief Geologist with Placer Dome. Over 20 years experience managing exploration in Australia and internationally.
Non-Executive Director	Mike Curnow	Owner and manager of a number of businesses in Australia and South Africa. 35 years industry experience and Director of several ASX-listed resources companies.
Proposed Chairman	John (Gus) Simpson	Corporate director with over 25 years of experience in the management of listed mineral companies. Current Executive Chairman of Peninsula Energy Ltd. and Non-executive Chairman of Quest Petroleum NL.
Proposed Director	Neil Warburton	Mining engineer with over 30 years experience in the mining industry and as a senior executive. Ex-CEO of Barminto Ltd, Australia and West Africa's largest mining contractor with worldwide operations.

Senior Management

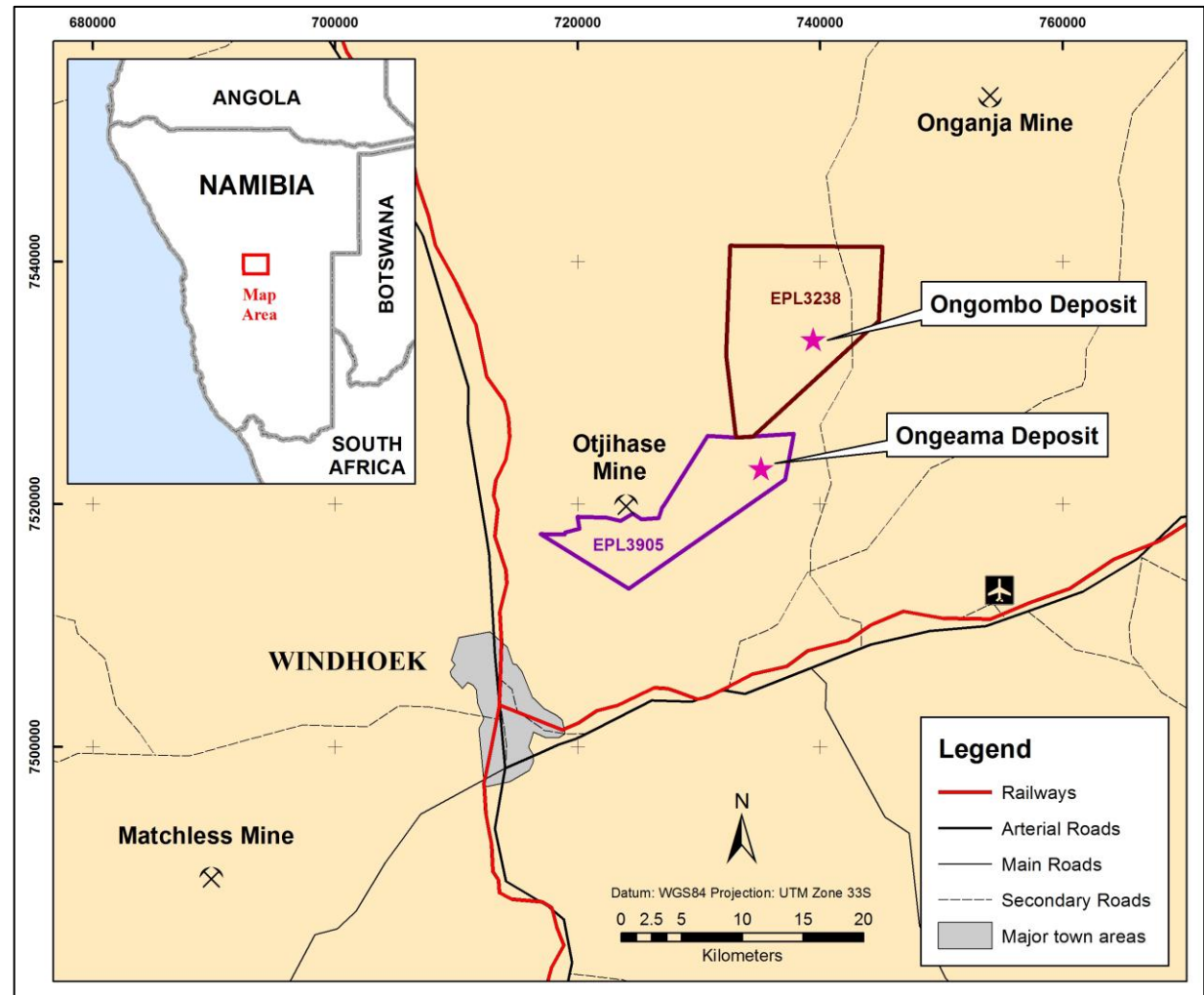
CEO	Lachlan Reynolds	
Country Manager	Robert (Bob) Timmins	Geoscientist professional living in Namibia. Over 40 years international experience including 20 years of operation in Namibia.
Jay Stephenson	Company Secretary	Accountant with over 20 years experience in finance and executive management roles for listed resources and industrial companies.

Namibian Projects



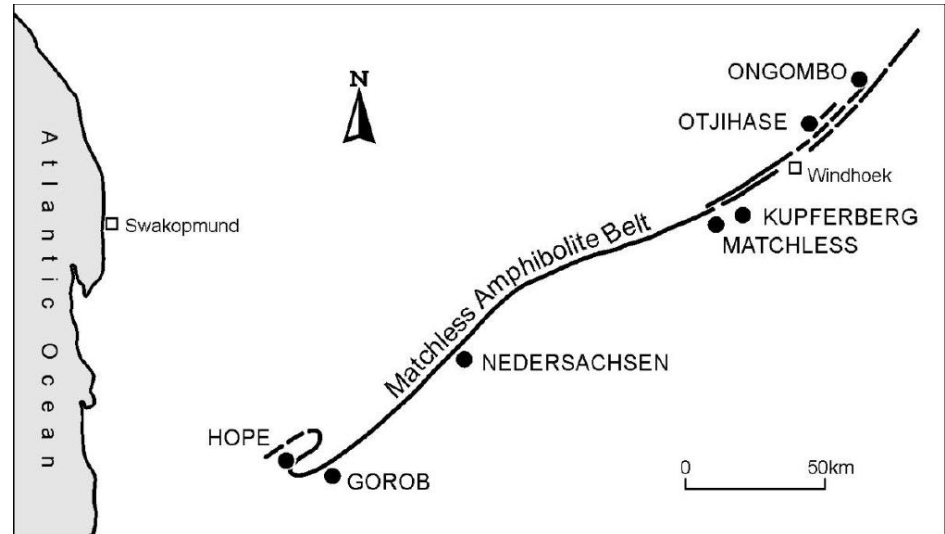
Strategic Advantages

- ▶ Excellent local infrastructure encompassing road, rail, and power facilities.
- ▶ Ongombo and Ongeama <50km by road from Windhoek via sealed highway and formed gravel roads.
- ▶ Active mining area with ready access to skilled labour, contractors, services and accommodation.
- ▶ Otjihase underground mine operated by Weatherly International is within trucking distance and has spare capacity.
- ▶ Proximal to rail head connecting projects with the Tsumeb smelter and Walvis Bay port.
- ▶ Tsumeb copper smelter recently refurbished and expanded by owners Dundee Precious Metals.



Regional Geological Setting

- ▶ Matchless Amphibolite Belt.
- ▶ 400km strike length in the southern Damaran orogenic belt.
- ▶ 18 known Cu deposits including Hope, Gorob, Matchless, Otjihase, Ongeama and Ongombo.
- ▶ Deposits are deformed and structurally controlled.
- ▶ Cu mineralisation with subordinate and variable Zn, Pb, Ag and Au.
- ▶ The 10 most important deposits have grades ranging between 1.3 and 3.9% Cu.
- ▶ Mining currently active at Matchless and Otjihase (Weatherly International plc).



Matchless Belt with Major Sulphide Deposits
(Breitkopf and Maiden, 1988)

Ongombo Project

- ▶ NCO earning 80% interest in EPL 3238, free carry of vendor (5%) and local partners (15%) to BFS.
- ▶ Mineralisation hosted by amphibolites of the Matchless Belt.
- ▶ Sporadic surface outcrop of NE–SW trending gossanous magnetic quartzite over 4.7km of strike length.
- ▶ Discovered in early 1970's by airborne magnetic survey.
- ▶ 132 previous diamond drill holes have defined 3 main NW dipping mineralised shoots. A resource has been estimated for the Ost and Central shoots.
- ▶ Higher grade mineralisation occurs as narrow zones plunging to the north.
- ▶ Deposit is open along strike and at depth down-plunge.
- ▶ Potential to increase resource through extensional drilling.



Upper part of the Ost shoot mineralised zone intercepted in drill hole ONG08-1.

Ongombo Resource



Mineral Resources at the Ongombo Project						
In-situ tonnes and grade at 0.6% Cu cut-off						
Resource Category	Tonnes (Mt)	Cu (%)	Ag (g/t)	Au* (g/t)	Density (t/m ³)	S (%)
Measured*						
Central Shoot	1.2	1.8	9	0.3	3.10	7.5
Ost Shoot	–	–	–	–	–	–
Indicated						
Central Shoot	0.6	1.9	10	0.3	3.07	8.3
Ost Shoot	5.0	1.4	7	0.3	3.12	8.8
Total Measured and Indicated	6.7	1.5	8	0.3	3.11	8.5
Inferred						
Central Shoot	0.9	1.4	7	0.3	2.94	8.7
Ost Shoot	2.8	1.8	9	0.3	3.10	11.9
Total Inferred	3.8	1.7	9	0.3	3.06	11.1

* Measured mineral resource for Cu and Ag only. Au is Inferred.

Appropriate rounding has been applied and the table may contain rounding errors.

Ongombo Feasibility



- ▶ Independent Scoping Study completed by Coffey Mining in 2013, results support viability for an underground mining operation.
- ▶ Recent review of resource indicates potentially economic mineralisation in Central Shoot could support a near-term mine development.
- ▶ Processing of mineralisation sourced from this operation could potentially be undertaken at the nearby operating mill and concentrator at the Otjihase mine, which would both minimise the capital expenditure requirements and accelerate generation of cash flow from the operation.
- ▶ Evaluation of and access to known mineralisation at deeper levels within the deposit could be undertaken once mining is in progress, thereby potentially extending the life of mine.
- ▶ An internal preliminary economic assessment utilising assumptions made in the scoping study indicates that an expanded resource base can support increased throughput rate and extended mine life scenarios which result in significantly enhanced viability.

Upside extensional exploration potential and/or local project consolidation could increase available mineral resources and enhance feasibility.

Proposed Work Program

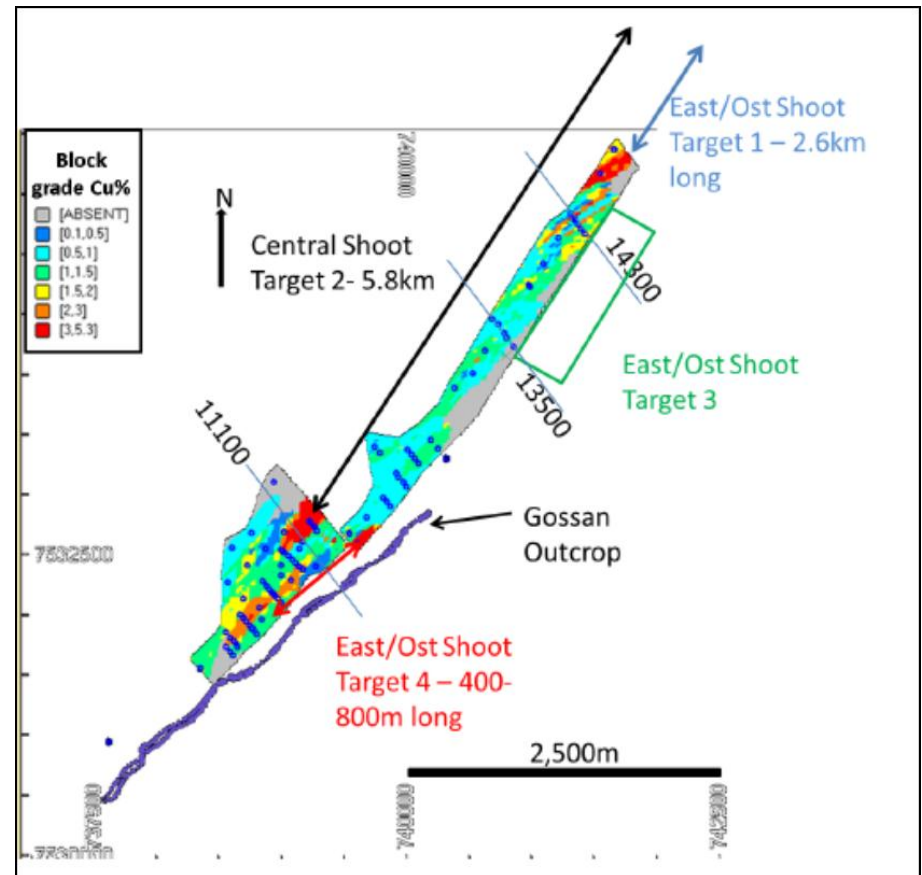
Ongombo Deposit:

- ▶ Drilling program to test priority areas in the Central Shoot and shallow parts of Ost Shoot.

Objective to confirm data that will support near-term development options and to extend known higher grade resource.

- ▶ Update of resource estimate and commence feasibility studies.
- ▶ Complete preliminary metallurgical testing.
- ▶ Commence initial environmental baseline studies.
- ▶ Initiate landholder, community and social programs.

Ongombo has an overall Exploration Target of 20 to 25Mt at 1.6 to 1.8% Cu.



Note that the potential quantity and grade of the Exploration Target is conceptual in nature. There has been insufficient exploration to define additional mineral resources and it is uncertain if further exploration will result in the delineation of a mineral resource.

Ongeama Project



- ▶ NCO finalising agreement to hold 77.5% interest in the Ongeama project with vendor (7.5%) and local partners (15%).
- ▶ The Ongeama EPL 3905 is currently being renewed by the Ministry of Mining and Energy for 2 year term.
- ▶ Ongeama deposit located only 10km SSW from Ongombo deposit and 15km from the Otjihase underground mine. Geologically similar mineralisation to these deposits.
- ▶ Surface outcrop of NE–SW trending gossanous pelitic schists over 1.2km of strike length. Rock chip samples show elevated Cu, Au, Zn and Ag.
- ▶ 26 diamond drill holes completed in 1970's demonstrated the Ongeama shoot extends down-plunge for a distance of 1,650m, over a width of 150–250m. Further drilling in 1990's showed mineralisation to a depth of 350m below surface.
- ▶ The shoot averages 1.5m in thickness and varies between 1.0–2.5m, being thicker at its centre and thinner at its margins.
- ▶ Mineralisation highly responsive to magnetic and EM geophysical survey methods.
- ▶ Deposit is open along strike and at depth down-plunge. Numerous other exploration targets known within licence area and multiple shoots possible

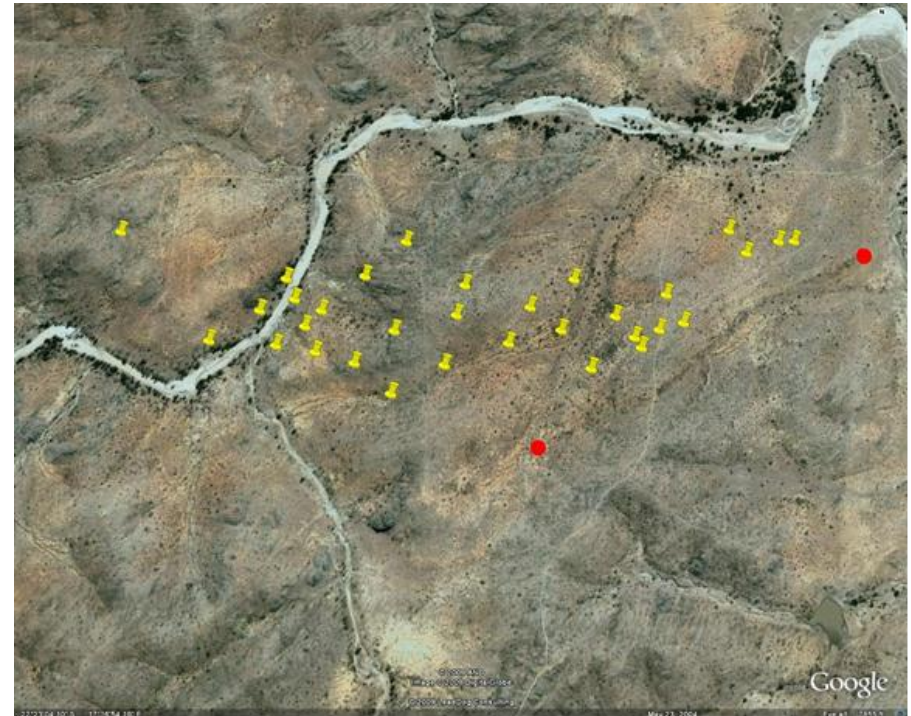
Potential to define near surface oxide and sulphide resource with additional drilling.

Proposed Work Program

Ongeama Project:

- ▶ Compilation of all historical geological, geophysical and drilling information.
- ▶ Limited program of RC percussion drilling to test for near-surface oxide mineralisation potential.
- ▶ Additional ground EM surveys to define extended and new exploration targets.
- ▶ Program of infill diamond drilling

Objective is estimation of an initial resource.



Google Earth image of the Ongeama deposit.

Red dots indicate ends of surface gossan

Yellow markers are approximate locations of historical drill holes

Massive gossan with copper and manganese oxides

Proposed Work Program



Kojeka Project:

- ▶ NCO finalising agreement to hold 77.5% interest in the Kojeka project with vendor (7.5%) and local partners (15%).
- ▶ Kalahari Copper Belt geological setting, potential for stratiform copper–silver mineralisation.
- ▶ Located 110km south of Windhoek, 55km east of the Klein Aub copper mine.
- ▶ Close to road and rail infrastructure.
- ▶ Mineralisation hosted by prospective shales of the Klein Aub Formation.
- ▶ Potential for shallow open–pit copper oxide mineralisation.
- ▶ Extensive historical exploration, including drilling.

NCO is currently collecting and collating all known geological and exploration data for the project area. An exploration proposal will be prepared for the project during the next quarter.

Company Goals



Development – Exploration – Acquisition

The Company has a strategy in Namibia to use its existing assets as the basis for a centralised operation with satellite resources. To realise this strategy, the Company will:

- ▶ Complete further drilling to advance feasibility studies on a near-term development option at the Ongombo project and to increase the resource base.
- ▶ Undertake exploration to demonstrate potential for additional resources at the nearby Ongeama project.
- ▶ Identify and act on further possible opportunities for acquisition or joint ventures.
- ▶ Assess the compatibility of additional resources and opportunities as satellite operations to the Ongombo project.
- ▶ Review mining and processing options to increase the viability and scale of a future operation and reduce CAPEX requirements.
- ▶ Consolidate NCO as the principal copper explorer in the central Namibia region.
- ▶ Secure partnerships with other key operators in Namibia.

Note that potential additional resources, acquisitions and economic modelling are conceptual in nature. There has been insufficient exploration to define an increased mineral resource and it is uncertain if further exploration will result in the delineation of a mineral resource.

Namibian Mining Regulation



- ▶ Well-established and favourable mining code.
- ▶ Major companies that operate in Namibia include Rio Tinto, AngloGold Ashanti, DeBeers/Anglo American, Teck, Paladin Energy and Swakop Uranium.
- ▶ Exploration and mining promoted and supported by the Ministry of Mines and Energy and the Geological Survey of Namibia.
- ▶ Mining accounts for about 20% of the country's gross domestic product and the mining industry employs 3% of the population.
- ▶ Namibian Government non-diamond mining royalty is 3%.
- ▶ Tax rates – Company tax is based on South African system. Basic tax is 30% with a secondary tax component applicable which raises tax to a max of 37.7%.
- ▶ There is a withholding tax of 10% for foreign companies charging management fees out of country.
- ▶ Workable framework with previously disadvantaged groups.
- ▶ Modern environment management standards.

Namibia Risk Rating



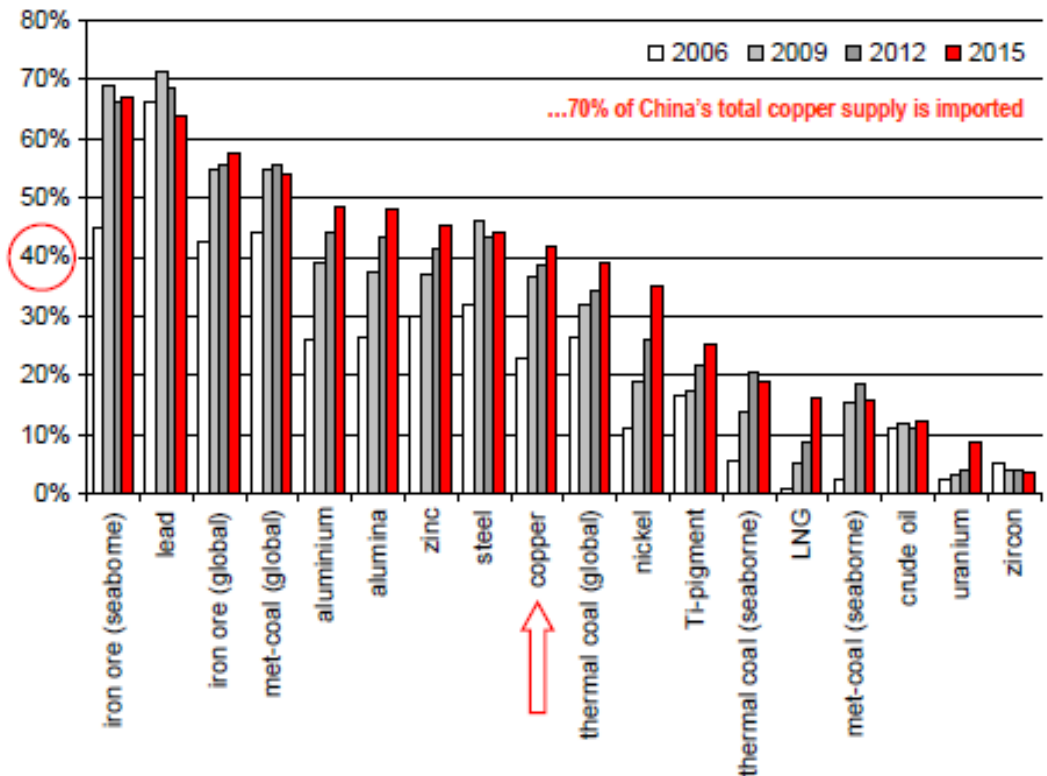
- ▶ Second most favourable investment destination for mining and exploration on the African continent in the annual Fraser Institute Survey of Mining Companies.
- ▶ Namibia ranks in the top 10 countries in the World Risk Survey 2013.

WORLD RISK SURVEY 2013													
		Financial Risk	Sovereign Risk	Land Access	Green Tape	Land Claims	Red Tape	Social Risk	Infrastructure	Civil Unrest	Natural Disasters	Labour Relations	
Maximum risk rating		3.3	3.4	3.26	3.35	3.12	3.65	3.2	3.15	2.75	2.16	2.76	
Minimum risk rating		1.1	1.02	1.02	1.34	0.65	1.46	0.64	0.63	0.55	0.47	0.9	
Rank	Country												Total
1	USA	1.46	1.25	2.08	2.26	1.74	2.38	1.58	1.06	0.78	0.89	1.23	16.72
2	Canada	1.51	1.53	1.89	2.13	1.79	2.15	1.44	1.56	1	0.97	1.38	17.35
3	Mexico	1.9	1.7	1.79	1.76	1.54	2.1	1.68	1.58	1.44	0.82	1.43	17.73
4	Botswana	2.02	1.62	1.76	1.73	1.72	1.95	1.66	2	1.22	0.91	1.31	17.91
5	Chile	1.69	1.96	2	1.9	1.48	2.27	1.67	1.65	1.07	1.12	1.53	18.35
6	Australia	1.61	1.8	2.26	2.48	2.18	2.67	1.54	1.48	0.76	0.78	1.61	19.17
7	Peru	1.51	1.65	2.04	2.11	1.95	2.4	2.01	2.07	1.34	1.01	1.37	19.45
8	Burkina Faso	2.22	2.35	1.92	1.71	1.89	2.06	1.66	2.12	1.55	0.81	1.64	19.92
9	Brazil	2.11	2.11	1.97	1.79	1.66	2.56	1.92	2.03	1.53	0.94	1.4	20.01
10	Namibia	2.17	2.33	1.85	1.87	1.81	2.35	1.78	1.89	1.22	0.97	1.8	20.03

Source: World Risk Survey 2013, Cover Story Oct/Nov 2013 Resource Stocks Magazine.

Long Term Outlook for Copper

- ▶ Demand for copper has trended steadily upwards for over 10 years.
- ▶ Demand is strong particularly from China, Japan, Taiwan, India and South Korea.
- ▶ Importantly, the strong demand from China is expected to endure, along with stable forecast GDP growth of around 7.5% p.a.
- ▶ Project pipelines suggest a supply shortfall, providing incentives for new developments and expansions.



China % of World commodity demand, sorted on 2015 data

Source: UBS Investment Research, Mines & Money Australia 2013,
Opportunities for copper

NCO Investment Highlights



- ▶ New development and exploration strategy.
- ▶ Quality copper project with significant JORC compliant resources & robust project metrics.
- ▶ Excellent exploration upside and potential for strategic acquisitions in belt with demonstrated geological prospectivity.
- ▶ Excellent infrastructure and support.
- ▶ Low sovereign risk and attractive jurisdiction for investment.
- ▶ Experienced Board and management team with extensive African mineral development and exploration background.
- ▶ Positive long term commodity outlook.



Thank you

For more information please visit www.namibiancopper.com.au

Contact : Mr Lachlan Reynolds, Managing Director
Unit 17, Level 2, 100 Railway Road, Subiaco WA 6005
E-mail : lreynolds@namibiancopper.com.au