



**RIFT VALLEY
RESOURCES LIMITED**



COMPANY UPDATE

AUGUST 2014

DISCLAIMER

- This presentation has been prepared by Rift Valley Resources Ltd (“Company”). The presentation does not contain all the information that a prospective investor may require about the companies, their business or the proposal. It is not a complete statement of material information. Except where stated, the information disclosed in this presentation (“Information”) relates to the proposed business of the Company at the date of this document. This presentation does not contain advice relating to legal, taxation or investment matters. Each Company makes no representation or warranty (express or implied) as to the accuracy, reliability or completeness of the Information. Each Company and its subsidiaries, directors, employees, agents and consultants shall have no liability (including liability to any person by reason of negligence or negligent misstatement) for any statements, opinions, information or matters (express or implied) arising out of, contained in or derived from, or for any omissions from this presentation, except liability under statute that cannot be excluded.
- This presentation may contain reference to certain intentions, expectations and plans of a Company (“forward looking statements”). Those intentions, expectations and plans may or may not be achieved. Any forward looking statements are subject to inherent risks and uncertainties and are based on certain assumptions that may not be met or on which views may differ. The performance and operations of a Company may be influenced by a number of factors, many of which are outside the control of the Company. Actual future results may be materially different. No representation or warranty, express or implied, is made by either Company or any of its directors, officers, employees, advisers or agents that any intentions, expectations or plans will be achieved either totally or partially or that any particular rate of return will be achieved. You are cautioned against relying upon any forward looking statement in this document.
- This presentation does not contain an offer of securities in a Company, nor an invitation to apply for such securities. Nothing in this document should be construed as investment advice or financial product advice, whether personal or general, for the purposes of Section 766B of the Corporations Act. The document does not involve or imply a recommendation or a statement of opinion in respect of whether to buy, sell or hold a financial product. You should obtain professional advice and carry out your own independent investigations and assessment of the Information before acting.
- Information in this presentation which is attributed to a named third party source has not been checked or verified by the Company. This presentation remains the property of Rift Valley Resources Ltd and may not be reproduced, distributed, transmitted or published (in whole or in part) without the prior consent of the Company.
- We advise in accordance with Australian Stock Exchange Limited Listing Rules 5(6) that the exploration results contained within this presentation is based on information compiled by Mr Greg Cunnold who is a member of the Australian Institute of Mining and Metallurgy. Mr Cunnold is a Director and consultant of Rift Valley Resources Ltd and has consented in writing to the inclusion in this ASX Release of matter based on the information so compiled by him in the form and context in which it appears. Mr Cunnold has sufficient experience relevant to the style of mineralisation and type of deposit under consideration to be qualified as a Competent Person as defined by the 2012 Edition of the “Australian Code for reporting of Exploration Results, Mineral Resources and Ore Reserves”.
- The information in this presentation that relates to Mineral Resources is based on information compiled by Mr Greg Cunnold, a Director and consultant and who is a Member of The Australasian Institute of Mining and Metallurgy. Mr Cunnold has sufficient experience which is relevant to the style of mineralisation and type of deposit under consideration and to the activity which he is undertaking to qualify as a Competent Person as defined in the 2004 Edition of the ‘Australasian Code for Reporting of Exploration Results, Mineral Resources and Ore Reserves’. Mr Cunnold consents to the inclusion in the presentation of the matters based on his information in the form and context in which it appears.



PROJECTS

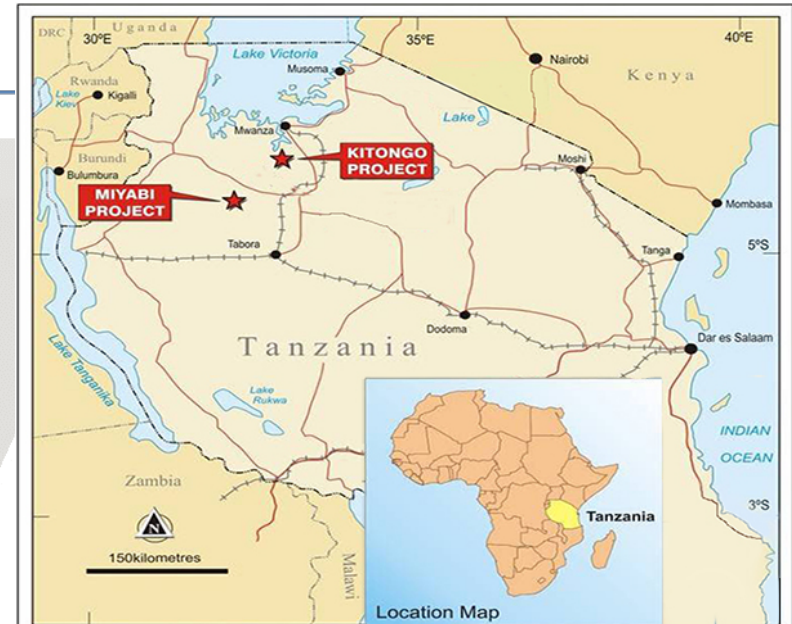


- Two Advanced Gold exploration projects situated in the Lake Victoria green stone belt Tanzania
 - ➔ *Miyabi Gold project 100% **
 - ➔ *Kitongo Gold project 100%*
- 3,670 sq.km Licence green stone Angola (Ozango Project) 70%
 - ➔ *REE*
 - ➔ *Gold*
 - ➔ *Copper*



- Highly credentialed board with significant operational experience and track record of success.
- Existing Gold resource across both Tanzanian projects with major upside
- Numerous targets already identified in Angola for aggressive follow up exploration.

* 100% Subject to final approval by TRA

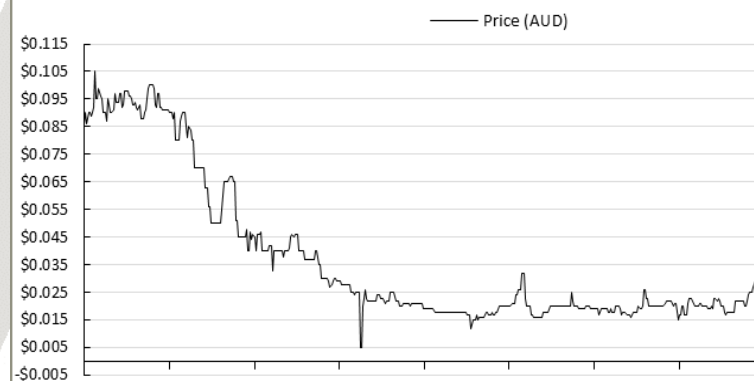


COMPANY INFORMATION

Company Data

ASX Code	RVY
Share Price	A\$0.035
Shares on Issue	329.58m
Market Cap	A\$11.5m
Options/Performance rights	23.25m
Cash (1st July 2014)	A\$2.0m

Share Price Chart



Top Shareholders

% Ownership

Director & Management	12%
Top 20	40%
Top 100	70%

Board of Directors

Geoff Gilmour	Managing Director
Greg Cunbold	Technical Director
Graeme Clatworthy	Non Executive Director



OVERVIEW OF PROJECTS/ STRONG NEWS FLOW

Angola

- **Lonjongo -REE - advanced exploration**
CURRENT EXPLORATION ONGOING
- **Catabola – Cassenha hill - Copper Gold exploration – drilling to commence**
TRENCHING COMPLETED / DRILLING TO START
- **Catabola – CATIVA – Gold – exploration**
VISIBLE GOLD IN STREAMS
- **Catabola Cambumbula – copper Gold – exploration**
OUTCROPPING OVER 10KM
- **Bongo - Gold exploration -**
10KM LONG SHEAR ZONE / GOLD SAMPLING TO START IN STREAMS

Tanzanian

- **Kitongo – Gold - advanced exploration**
DRILLING
- **Miyabi – Gold – advanced exploration**
FOLLOW UP HIGH GRADE DRILLING RESULTS

REE

Drilling
Kitongo

Cassenha hill

Drilling

Stream Sampling

Bongo

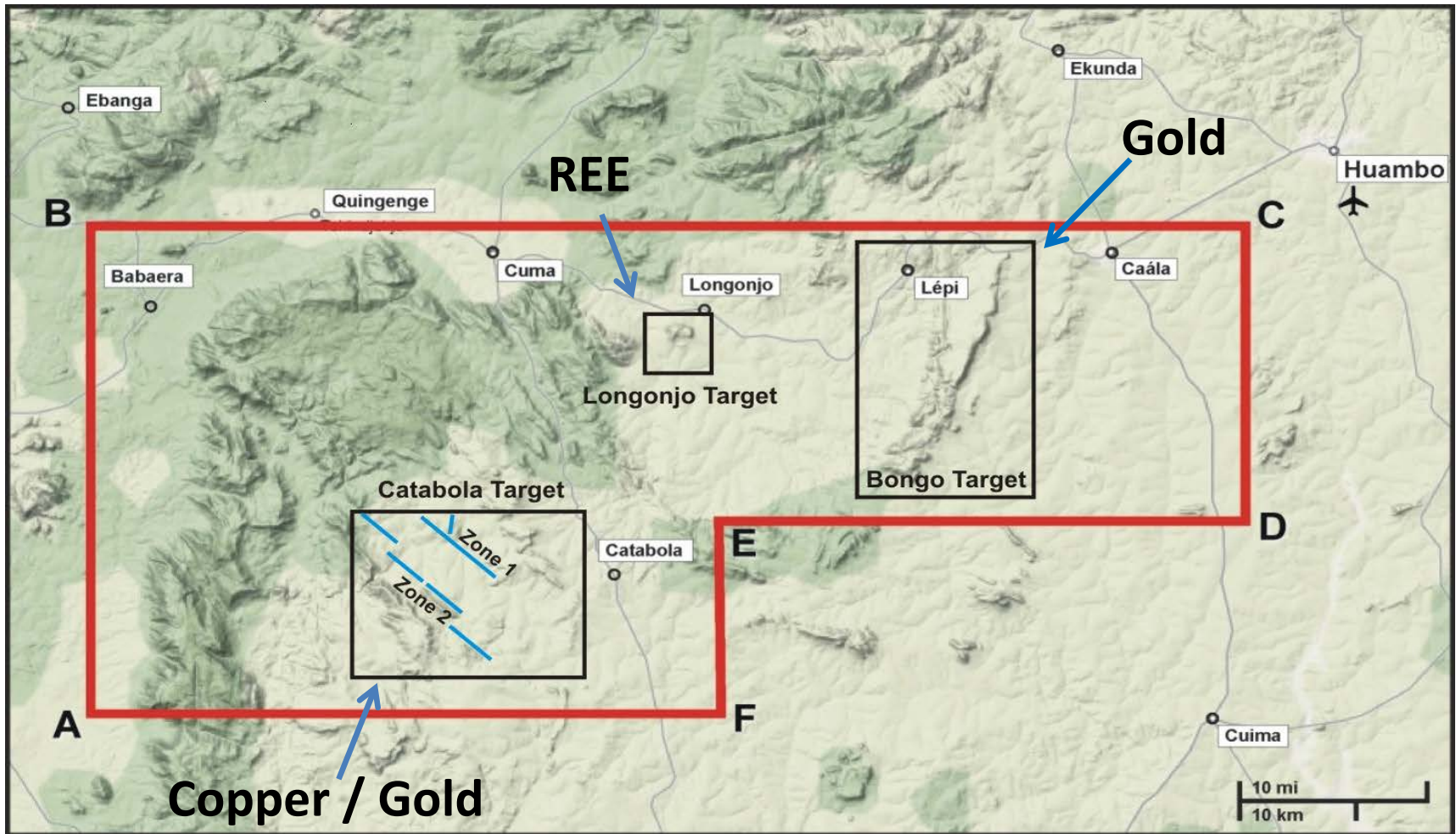
Air
Mag

Drilling
Miyabi

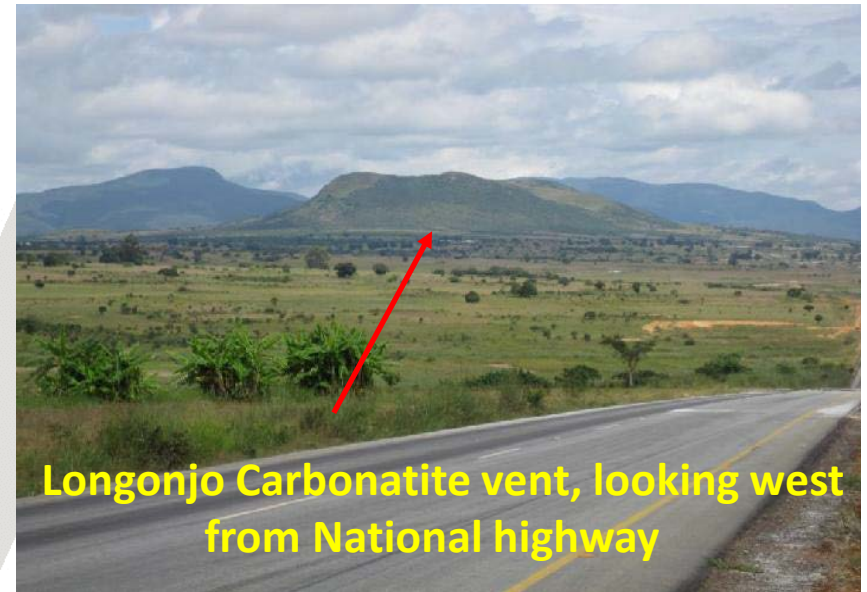
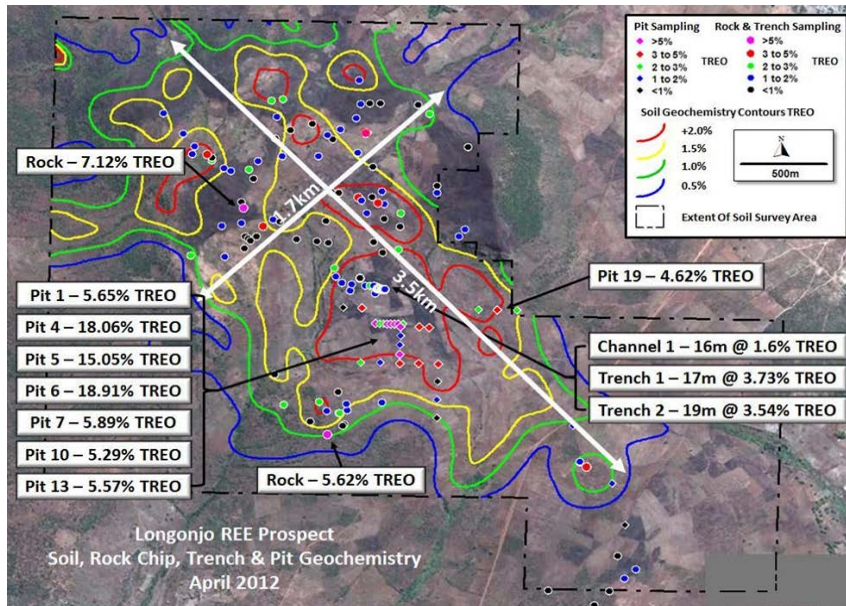


OZANGO LICENCE ANGOLA : 3,670 SQ.KM / 367,000 HA

3 MAJOR “WORLD CLASS” TARGET AREAS



LONGONJO REE LARGE PROSPECTIVE AREA / WITH INFRASTRUCTURE

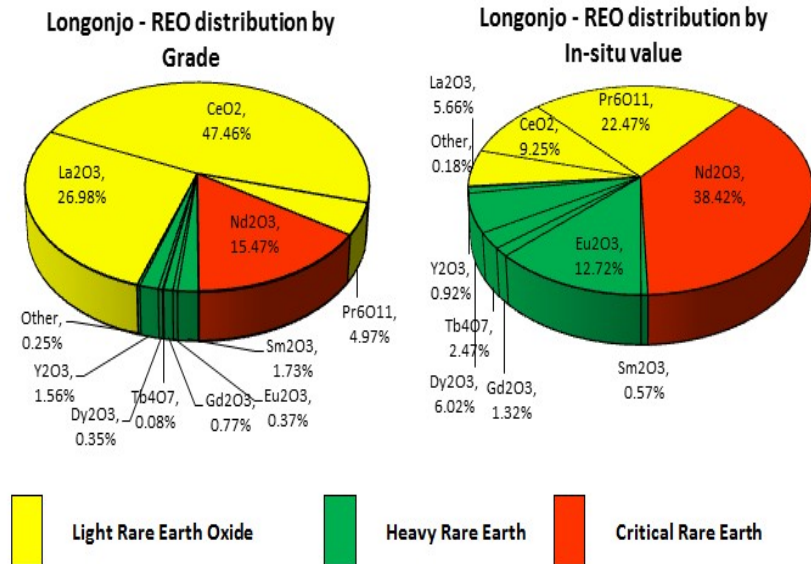
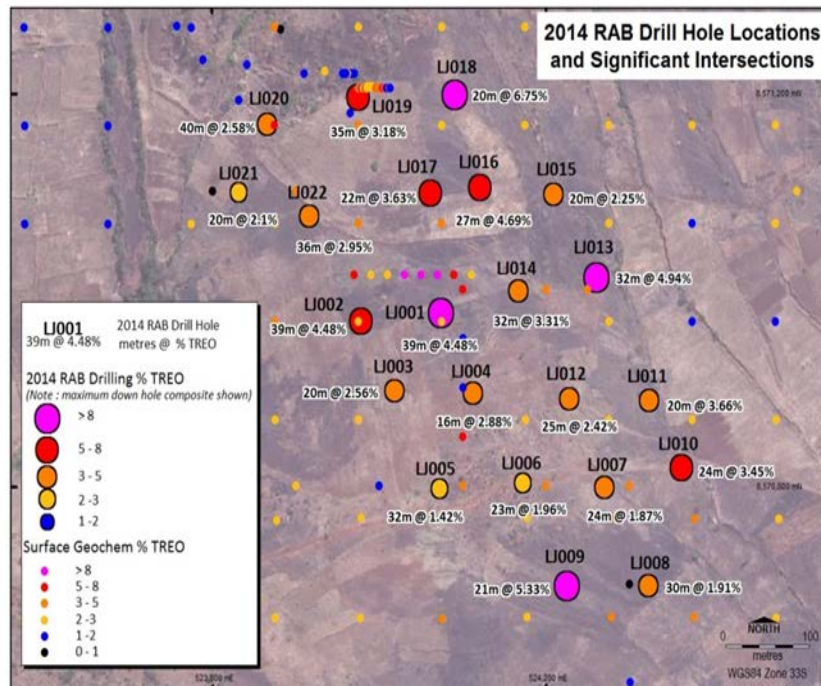


	La ₂ O ₃ %	CeO ₂ %	Pr ₆ O ₁₁ %	Nd ₂ O ₃ %	Sm ₂ O ₃ %	Gd ₂ O ₃ %	Y ₂ O ₃ %	Other %	TREO %
RVY drill campaign	0.78	1.38	0.14	0.45	0.05	0.02	0.05	0.03	2.96

	La ₂ O ₃ %	CeO ₂ %	Pr ₆ O ₁₁ %	Nd ₂ O ₃ %	Sm ₂ O ₃ %	Gd ₂ O ₃ %	Y ₂ O ₃ %	Other %	TOTAL %
RVY Drill Campaign	27	47	5	15	2	1	2	1	100
Peak Ore Resource	27	48	5	17	2	1	0	0	100



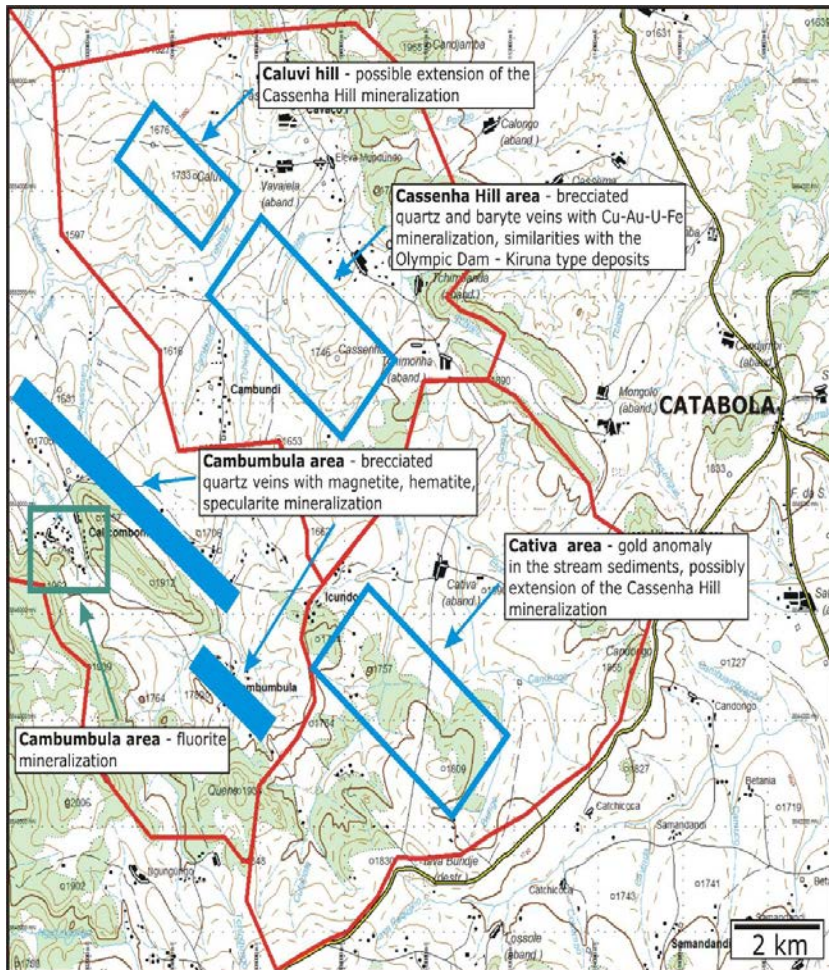
CRITICALS LIGHTS & HEAVIES / HIGH GRADE



First pass exploratory drilling conducted at the Company's Longonjo prospect in February tested a robust geochemical anomaly and returned high grade rare earth assays, as total rare earth oxides (TREO), from every hole. From a total of 168 composite samples generated during the campaign, the highest grade returned was 11.32%, the lowest 0.45%, with an average of 2.96% TREO over all the samples.



CATABOLA GOLD-COPPER TARGET AREAS



Cassenha Hill (Gold, Copper)

- 3,000m x 750m mineralized zone, open in nw.
- 6 g/t gold chip samples.
- 9% copper soil samples.
- SRK Consulting report compares Cassenha hill target with the giant (IOCG) Salobo Project in Brazil.
- Drill program designed & ready to go

Cambumbula – Cativa (Gold, Copper, Iron)

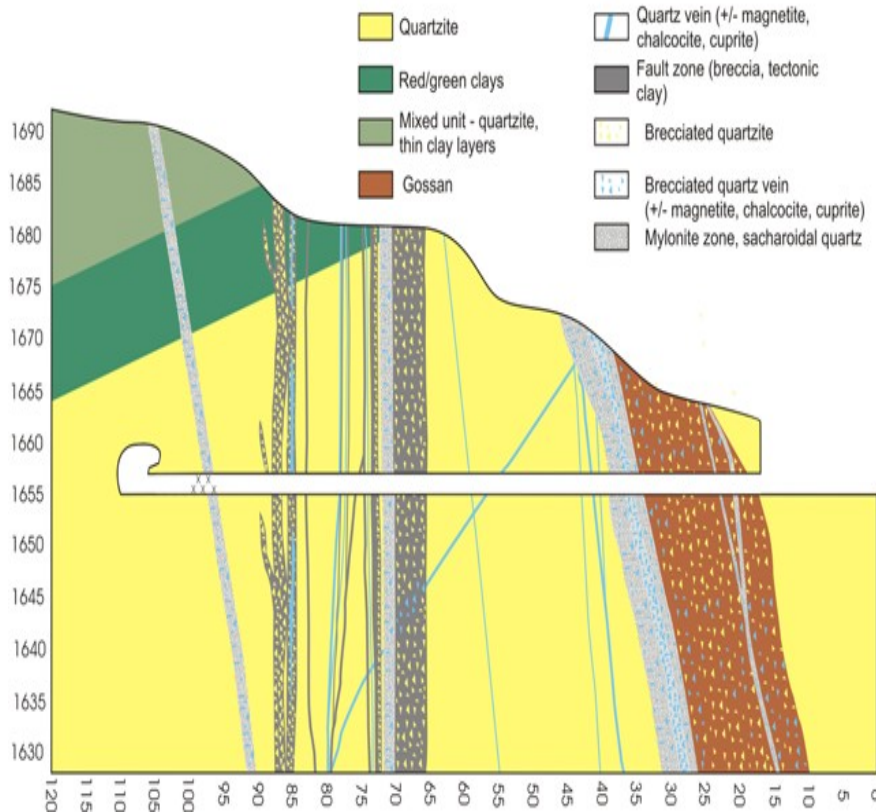
- New area, known mineralized zone 5,000m x 400m, possible length >20,000m.
- Lenses of massive magnetite/hematite up to 600m x 200m.
- Ready for exploration drilling



CASSENHA HILL COPPER GOLD

Cross section no. IV

Scale 1:500



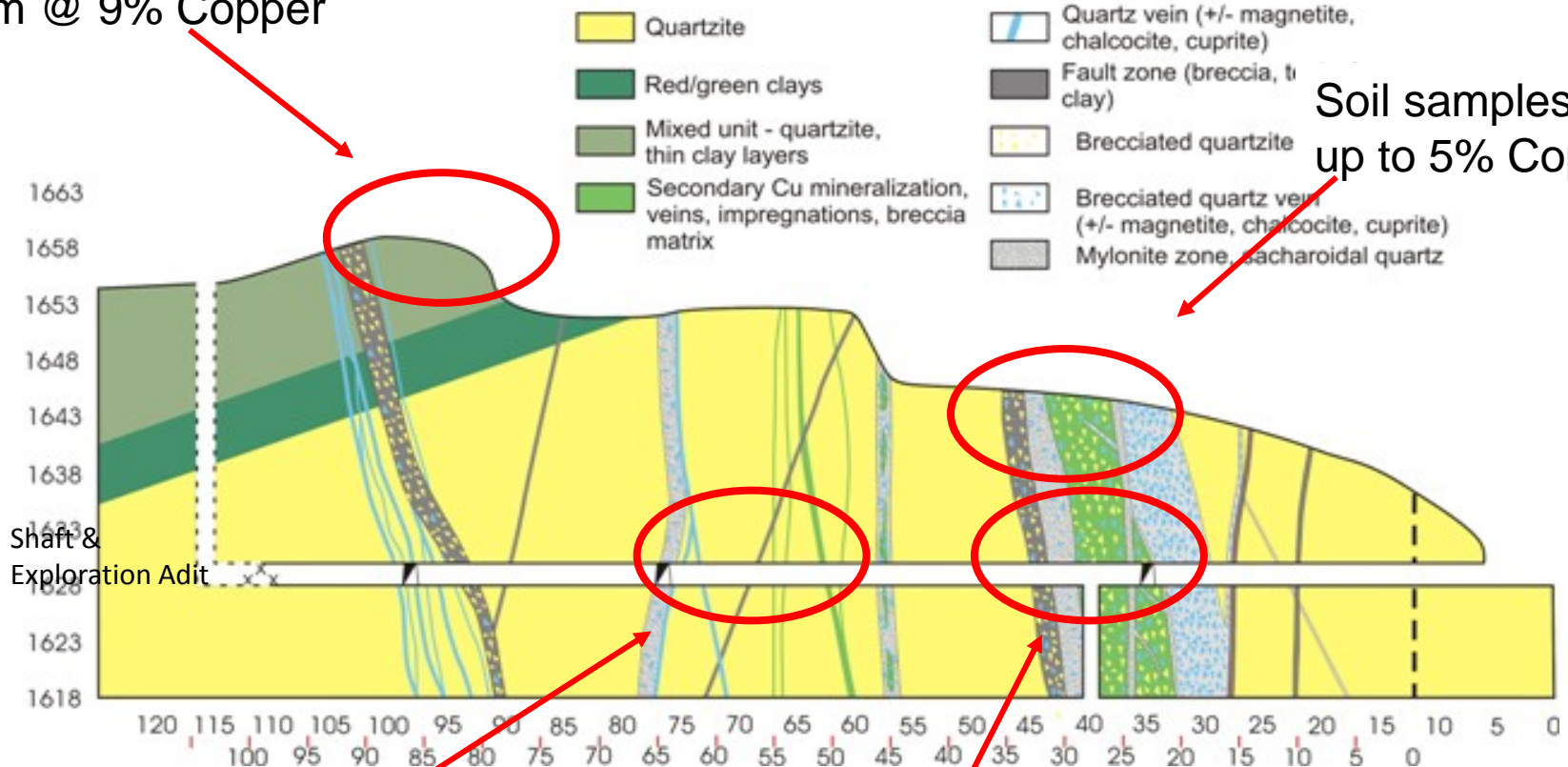
CASSENHA HILL – COPPER GOLD

Cross section no. II

Scale 1:500

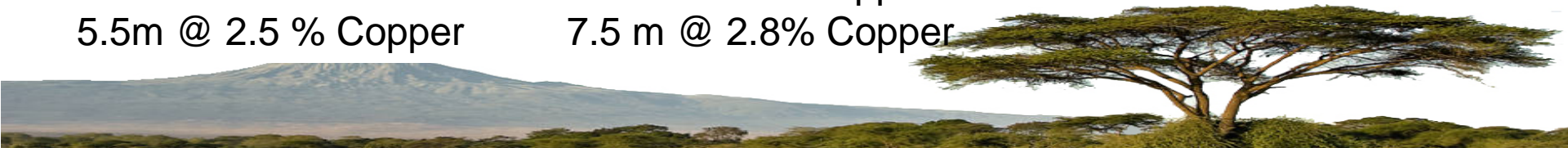
Copper clays
3-5m @ 9% Copper

Soil samples
up to 5% Copper

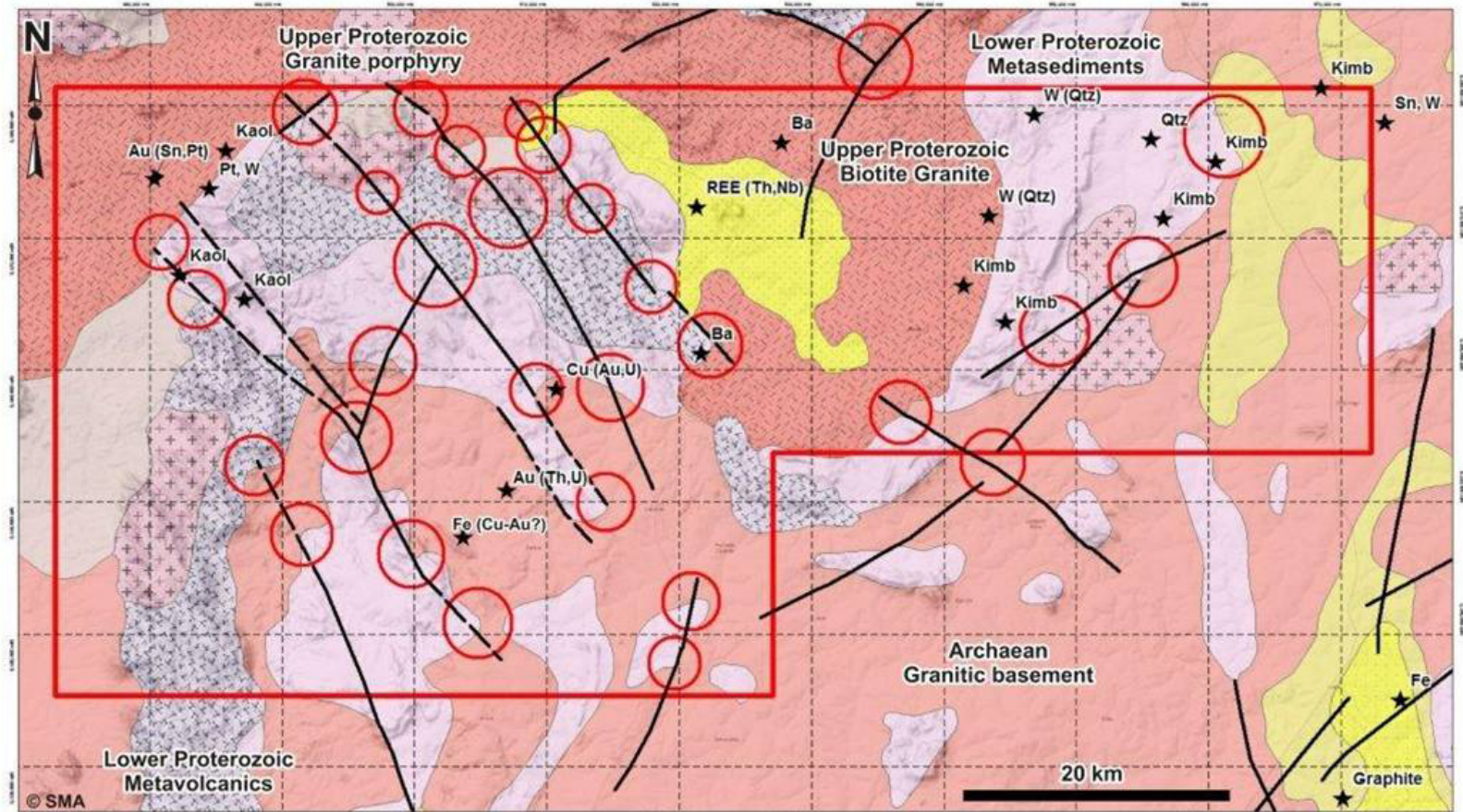


Malachite veins zone
5.5m @ 2.5 % Copper

18m @ 1.4% Copper
7.5 m @ 2.8% Copper



29 OROGENIC LODE-GOLD TARGETS 6 G/T GOLD CHIP SAMPLES



Simplified geology map of the Longonjo licence, Angola. The licence is underlain by Archaean granitic basement, lower Proterozoic metasediments and metavolcanics, cut by Upper Proterozoic biotite-bearing granite and granite porphyries. Numerous northwest- and northeast-trending major faults cut the Proterozoic metasedimentary and metavolcanic (Greenstone Belt) sequences. Based on the current geology at total of **29 orogenic lode-gold targets** have been identified on the licence. Most of the known gold mineralization occurs adjacent to major crustal faults, or splays associated from them.



- **Over 10 km long structure.**
- **SRK Consulting report compares the Bongo target with the 5 million oz (Gold) Macraes Flat project in New Zealand.**
- **Complicated tectonic setting with numerous shear zones.**
- **Promising area for shear zone hosted gold mineralization.**
- **2008 stream sediment sampling program covered the Bongo Target area.**
- **Alluvial gold throughout the entire target area, potential for major gold discovery in this target.**



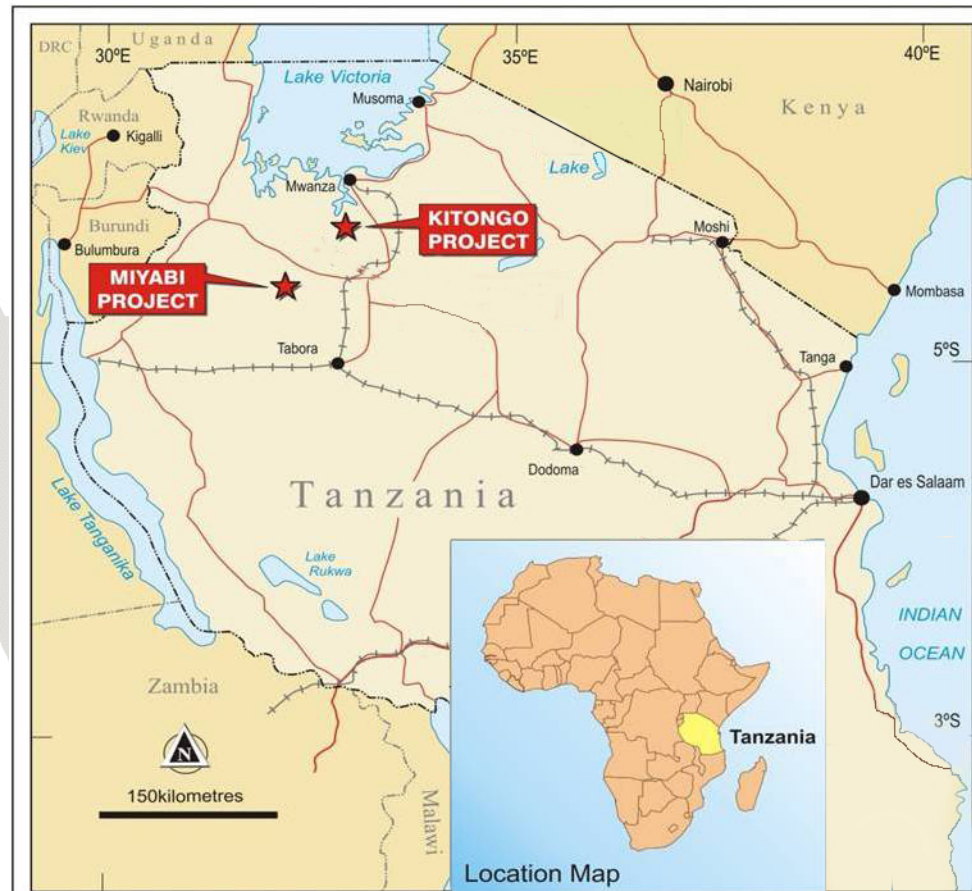
TANZANIAN PROJECTS

➤ Kitongo Gold Project (100%)

- 370,000oz JORC resource
- Majority of resource is shallow, wide oxide with excellent metallurgy
- Low strip ratio, clear open pit potential
- Drill ready targets
- 128km² project area

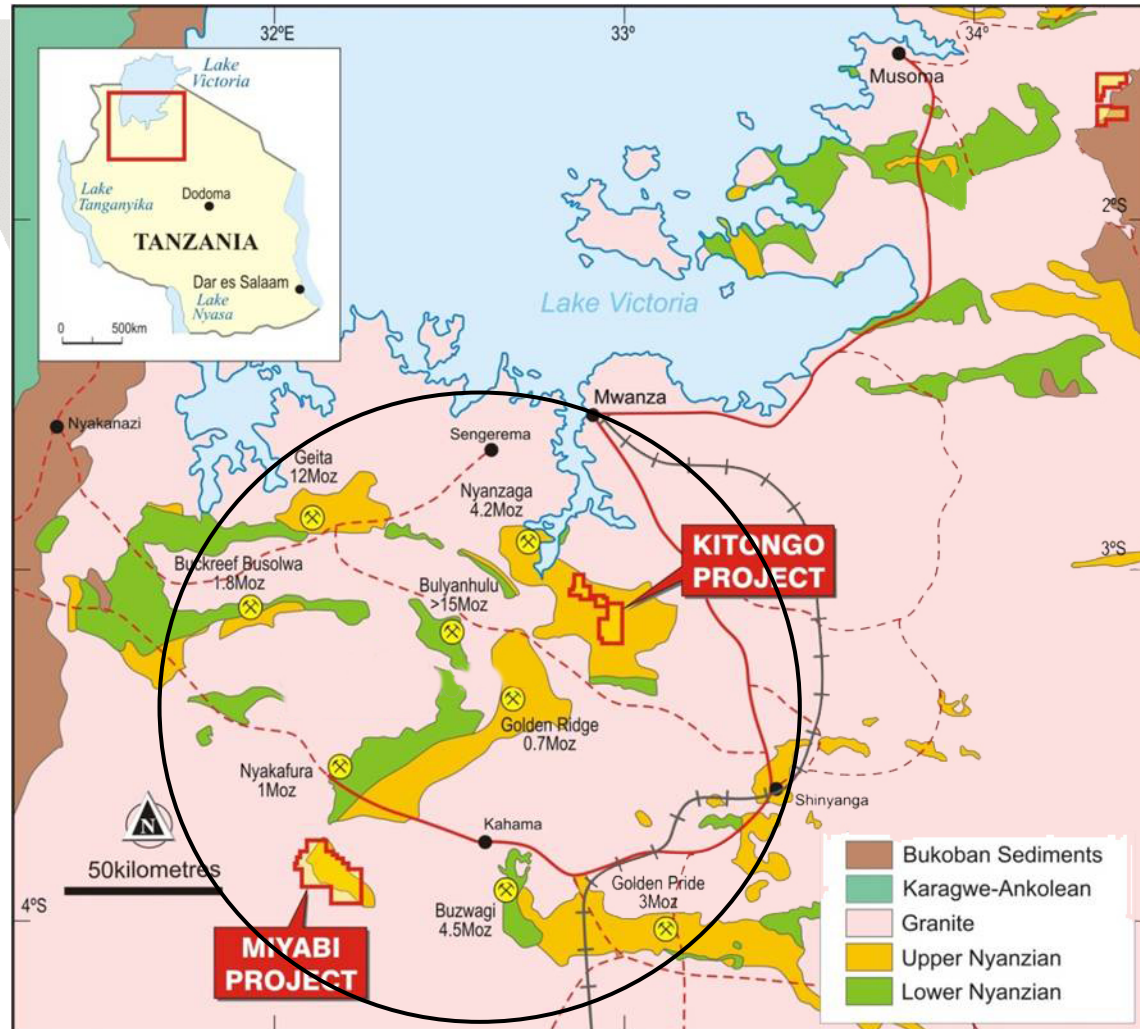
➤ Miyabi Gold Project (100%)

- 520,000oz JORC resource
- Four deposits with higher grade shoots defined
- Excellent exploration targets defined
- 252km² project area



TANZANIA – GEOLOGY & PROSPECTIVITY

- Most major deposits located in Lake Victoria Goldfields
- Archaean granite-greenstone terrain similar to Western Australia
- Exploration boom of 1990's led to discovery of numerous deposits
- High proportion of large deposits (>4Moz)
- +40Moz gold endowment in 200km diameter



TANZANIA – MAJOR GOLD DEPOSITS

Deposit	Company	Discovered/ Defined	Resource (incl Reserve) 2010		
			Mt	g/t	Moz
Bulyanhulu	Barrick	1990's	42.1	12.6	17.0
North Mara	Barrick	1990's	38.2	3.2	3.9
Buzwagi	Barrick	1990's	91.1	1.5	4.4
Golden Ridge	Barrick	1990's	7.5	2.8	0.7
Tulawaka	Barrick 70%	1990's	0.6	7.2	0.1
Nyanzaga*	Barrick	2008	5.3	2.8	0.5
Geita	Anglo	1990's	102.3	3.4	11.3
Golden Pride**	Resolute	1990's	24.7	1.7	1.3
Nyakafuru**	Resolute	1990's	19.4	1.7	1.1

*Previously quoted by Tusker at 4.2Moz

**2011 Resource



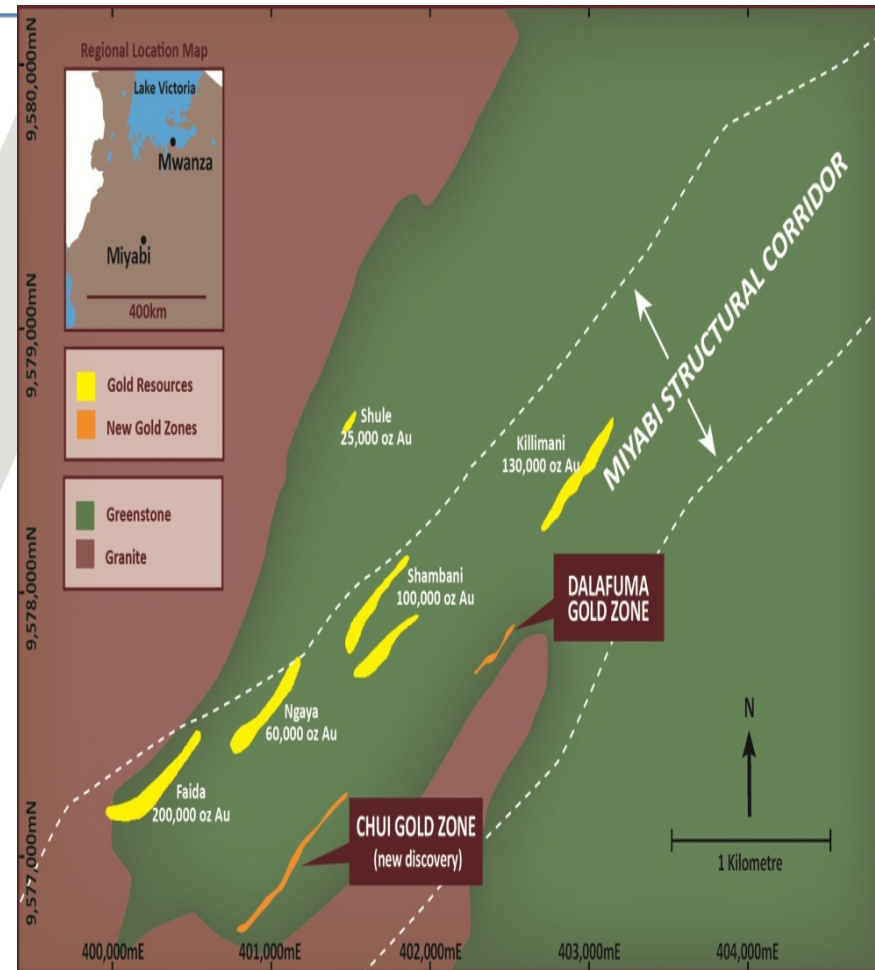
TANZANIAN - MIYABI

Miyabi Structural Corridor (MSC)

- Northeast trending structure in the southern parts of the license;
- Strike length of ~7.7km and average width of ~800-1,000m;
- Numerous clustered deposits discovered historically;
- Remaining MSC largely unexplored; and
- Potential to host multi-million ounce resource.

New Gold Zones

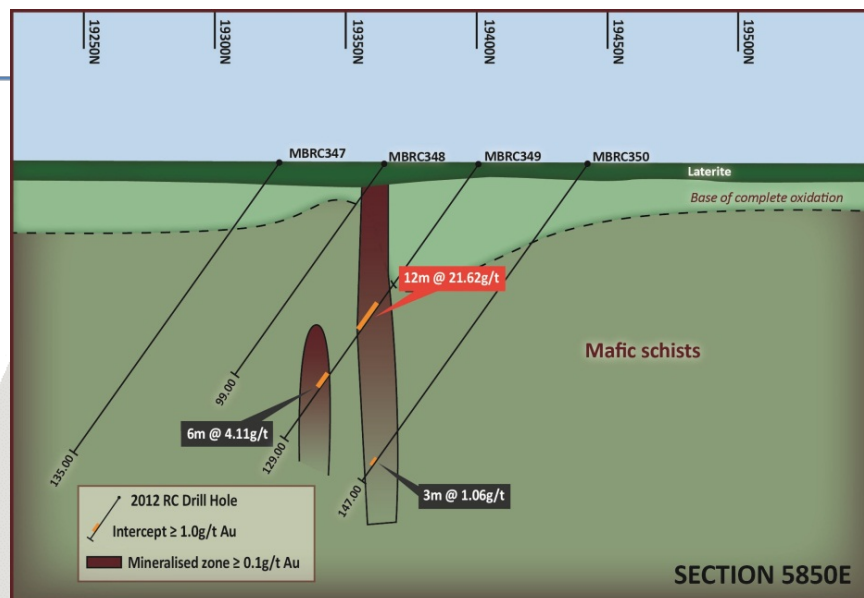
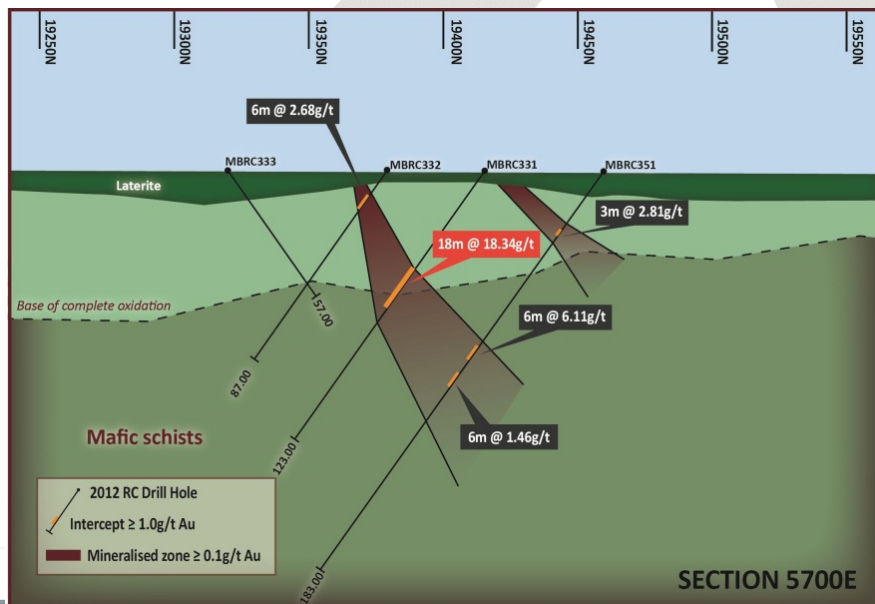
- New gold discoveries at Chui and Dalafuma;
 - ➔ *Follow up drilling to test the continuity and possible strike extensions.*



MIYABI

Drilling Highlights

- Chui:
 - ➔ **11m @23.0g/t Au from 54m;**
- Dalafuma:
 - ➔ **18m @18.3g/t Au from 45m;**
 - ➔ **12m @ 21.6g/t Au from 66m;**
 - ➔ **24m @ 10.6g/t Au from 21m;**



Dalafuma Section

Dalafuma Section



**Miyabi
JORC
Resource
2004**

- Completed by SRK Consulting for African Eagle Resources;
- Based on 165 RC holes and 30 DD holes drilled at 25m and 50m spacing; and
- Good quality, validated data.

Deposit	Indicated (100%)			Inferred (100%)			Total Resource (100%)		
	Mt	g/t	Moz	Mt	g/t	Moz	Mt	g/t	Moz
Faida	3.5	1.5	0.17	1.0	0.9	0.03	4.4	1.4	0.20
Ngaya	0.2	1.0	0.01	1.5	1.1	0.05	1.7	1.1	0.06
Shambani	1.6	1.5	0.07	0.8	1.1	0.03	2.4	1.3	0.10
Kilimani	2.6	1.4	0.12	0.3	1.6	0.01	2.9	1.4	0.13
Northern Zone				1.0	0.8	0.02	1.0	0.8	0.02
Total	7.9	1.5	0.37	4.5	1.0	0.15	12.4	1.3	0.52

Miyabi Mineral Resource Estimate 0.5g/t Au Cut-off (SRK Estimate 2006)



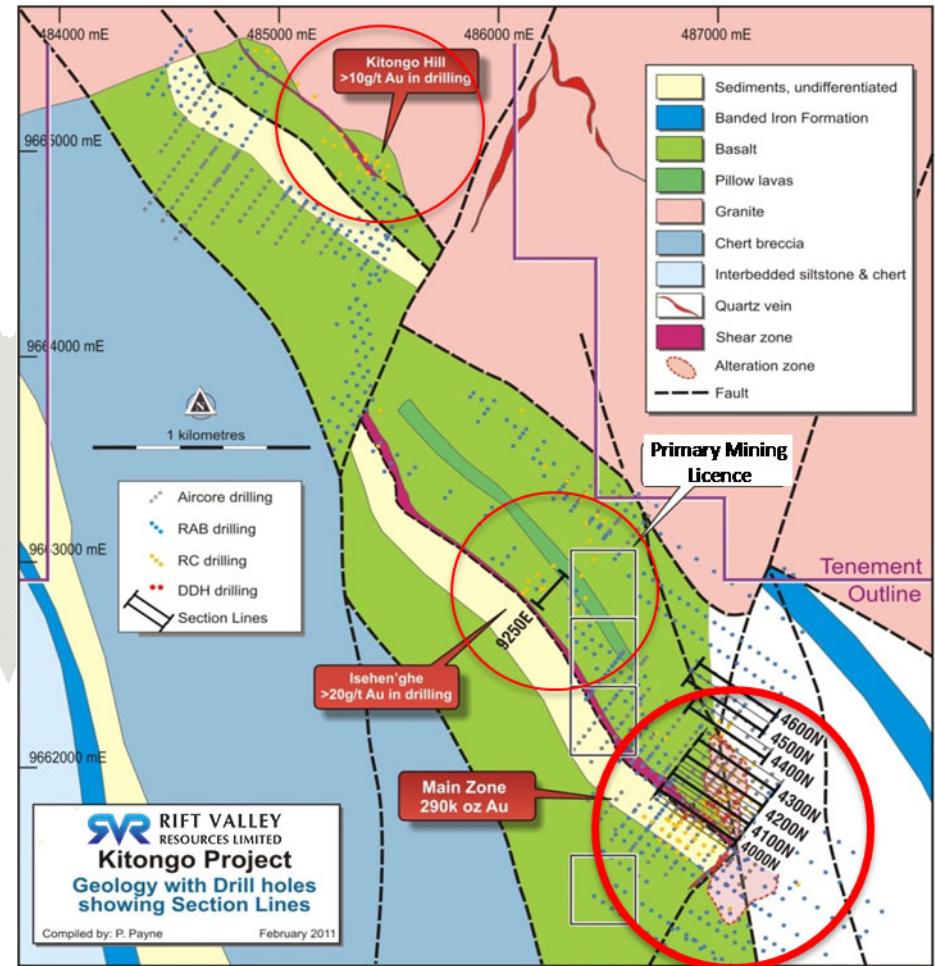
TANZANIAN KITONGO

Main Zone

- **370,000koz Au @ 0.5 g/t cut off.**

Drilling Highlights

- **Isegen'ghe:**
 - ➔ **3m at 19.60g/t from 141m; and**
 - ➔ **2m at 15.75g/t from 81m.**
- **Kitongo Hill:**
 - ➔ **12m at 12.95g/t from 74m;**
 - ➔ **10m at 2.14g/t from 48m; and**
 - ➔ **4m at 2.97g/t from 15m.**



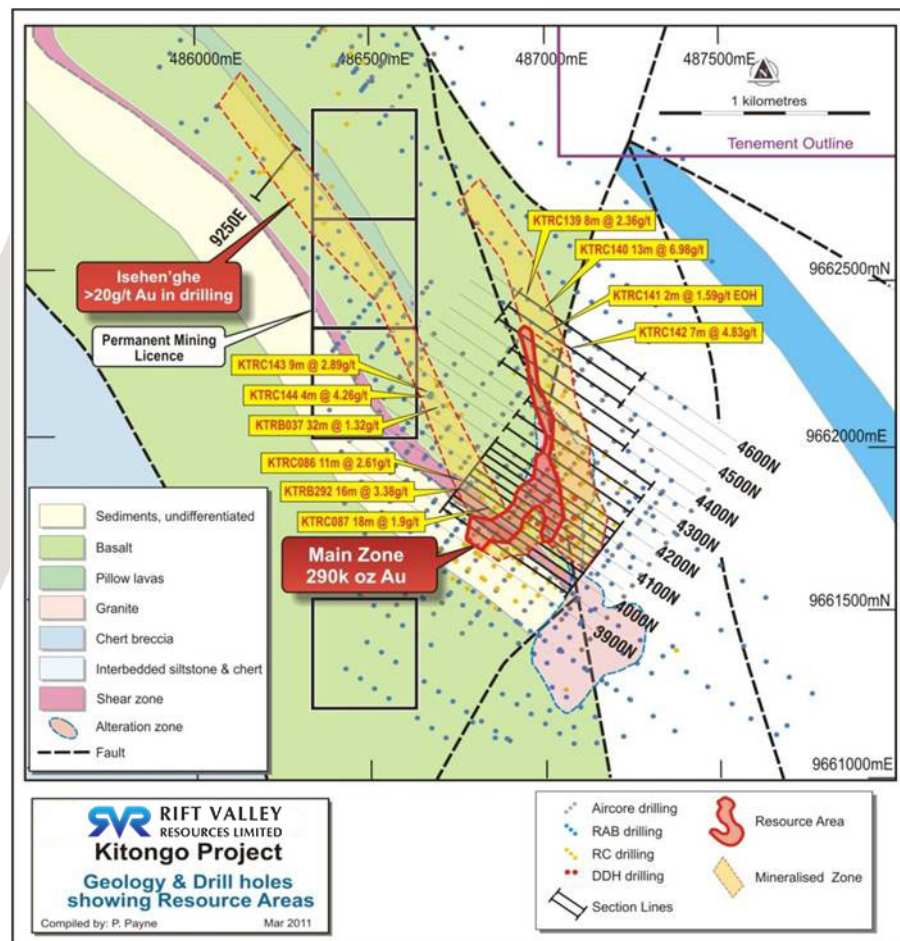
KITONGO

Northern Shear

- 800m long strike length;
- Most holes drilled to 80m vertical depth;
- All holes mineralised with likely depth extension ;
- Mineralisation in KTRC140 ended in high grade:
 - ➔ 13m at 6.98g/t; and
 - ➔ *Best intersection but outside of current resource.*
- Later drill info not used in the estimate:
 - ➔ *Will extend the resource which is open and untested to the north.*

South Limb

- Zone appears to continue strongly north-west outside the current resource; and
- Numerous resource-grade intersections occur outside the resource boundary.



KITONGO

**Kitongo
JORC Resource
2004**

- Completed by Hellman and Schofield for IAMGold;
- Based on 141 RC holes and 13 DD holes drilled at 25m and 50m spacing.

Kitongo Gold Project 2006 Inferred Mineral Resource						
Type	1.0g/t Au Cut-off			0.5g/t Au Cut-off		
	Mt	g/t	Moz	Mt	g/t	Moz
Laterite	0.4	2.1	0.03	0.8	1.3	0.04
Highly Ox	2.4	2.2	0.17	3.8	1.7	0.21
Moderately Ox	0.4	2.0	0.03	0.7	1.5	0.04
Fresh	1.2	1.7	0.07	2.5	1.2	0.09
Total	4.4	2.0	0.29	7.8	1.5	0.37



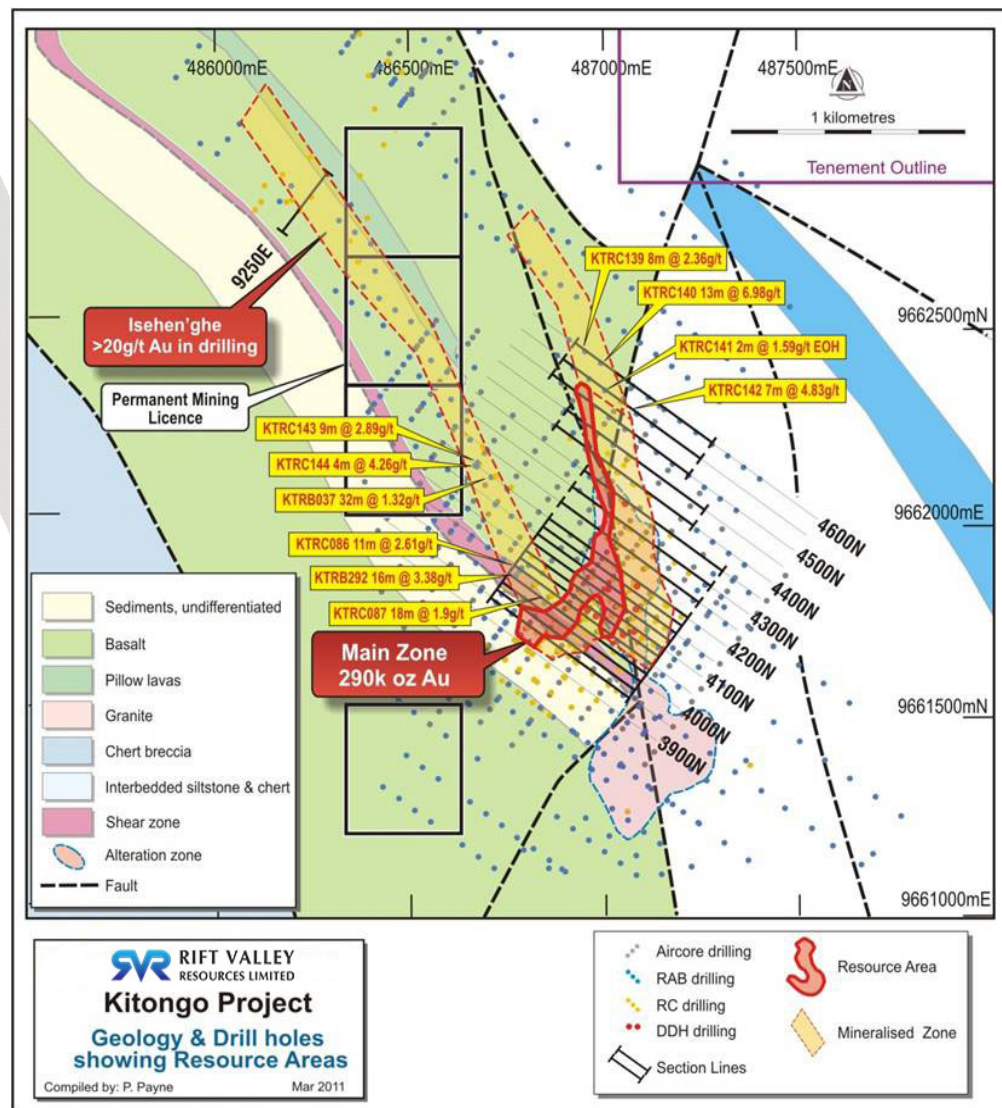
KITONGO PROJECT – PRIORITY TARGETS

Northern Shear

- 800m long, most holes above 80m vertical, all holes mineralised, major depth extension likely
- High grade mineralisation in KTRC140 will extend resource by minimum 100m and is open and untested to the north for a further 150m
- Best fresh rock intersection in the deposit is outside the resource, ended in high grade KTRC140 13m at 6.98g/t (EOH)

South Limb

- Most RAB/AC holes are drilled down dip so there has been inadequate testing of zone.
- Zone appears to continue strongly north-west from resource boundary.
- Numerous resource grade intersections occur outside the resource boundary



WORK PROGRAMME NEXT SIX MONTHS

Angola – Trenching REE

Drilling Cassaenha hill

Stream sampling bongo

Government Air Mag

Tanzanian – Drilling Kitongo followed by Miyabi

August 14

Steady news flow from results

December 14



CONTACT DETAILS

Geoff Gilmour

Ph: 0412 155 512

Email: ggilmour@riftvalleyresources.com.au

Graeme Clatworthy

Email: gclatworthy@riftvalleyresources.com.au

Rift Valley Resources

Level 2/23 Barrack Street Perth

Email: info@riftvalleyresources.com.au

Ph: 08 9221 0090

Fax: 08 9221 0095

