

BUREY GOLD LIMITED - BYR

BUREY GOLD

INVESTOR PRESENTATION

Klaus Eckhof, Mark Gasson

August 2014



Disclaimer

BUREY GOLD

The Material in this presentation (“material”) is not and does not constitute an offer, invitation or recommendation to subscribe for, or purchase any security in Burey Gold Limited (BYR) nor does it form the basis of any contract or commitment. BYR, its directors, employees, agents and consultants, shall have no liability including liability to any person by reason of negligence or negligent misstatement, for any statements, opinions, information or matters, express or implied, arising out of, contained in or derived from, or for any omissions from this material except liability under statute that cannot be excluded.

Statements contained in this material, particularly those regarding possible or assumed future performance, costs, dividends, production levels or rates, prices, resources, reserves or potential growth of BYR, industry growth or other trend projections are, or may be, forward looking statements. Such statements relate to future events and expectations and, as such, involve known and unknown risks and uncertainties. Actual results and developments may differ materially from those expressed or implied by these forward looking statements depending on a variety of factors.

Competent Person’s Statement

The information in this report that relates to the Balatindi Project was first reported by the Company in compliance with JORC 2012 in a market release dated 30 April 2014. The information in this report that relates to the Giro Project was first reported by the Company in compliance with JORC 2012 in a market release dated 22 May 2014. The Company confirms that it is not aware of any new information or data that materially affects the information included in the market announcements dated 30 April and 22 May 2014 respectively.

Company Snapshot

BUREY GOLD

ASX Code	BYR	No of Shareholders	1140
Shares on Issue (Post Giro Transaction)	407.29M (525.36M)	Top 20 Holding	69.4%
Options 6m @ 8c/6m @ 12c	12M expire 6/2/2015	Significant Shareholders (Prior to Giro Transaction)	
Market Cap (06/08/2014)	~8M	Perseus Mining Ltd	20.01%
Cash (30/06/2014)	\$1.9M	JP Morgan Nominees Australia Ltd	17.70%
Debt	Nil	Cong Maohuai	9.44%



Board of Directors

BUREY GOLD

Klaus Eckhof **Executive Chairman**

Geologist

20+ years of experience developing mineral deposits, including time in Africa. Founded Moto Goldmines, Spinifex Gold Ltd and Lafayette Mining Ltd.

Kevin Thomson

Non-executive Director

Geologist

25+ years' experience. 11 years in West Africa, including Guinea. Exploration manager for Burey's largest shareholder, Perseus Mining Limited, and instrumental in its successful Ghana and Ivory Coast gold projects

Mark Calderwood

Non-executive Director

20+ years of experience in exploration and development in Africa. Previously Managing Director and CEO of Perseus Mining, Mr Calderwood worked for Mount Edon Gold Mines before moving to Moto Gold Mines where he was involved in the discovery of Kibali Gold Mine. He also serves on Boards of Explaurum & Manas Resources.

Susmit Shah

Non-executive Director , Company Secretary

Chartered accountant

25+ years experience. Has been involved with a range of Australian publicly listed companies in company secretarial and financial roles.

Burey Projects in Africa

BUREY GOLD



GIRO PROJECT, Democratic Republic of Congo

- 610km² in two licences – gold
- Burey acquired 55%; option on additional 10%
- DRC Parastatal (Sokimo) 35%

BALATINDI PROJECT, Guinea

- 249km² in three licenses – gold, uranium, copper
- Burey completing its 90% ownership process; option on remaining 10%
- State 15%

Democratic Republic of Congo

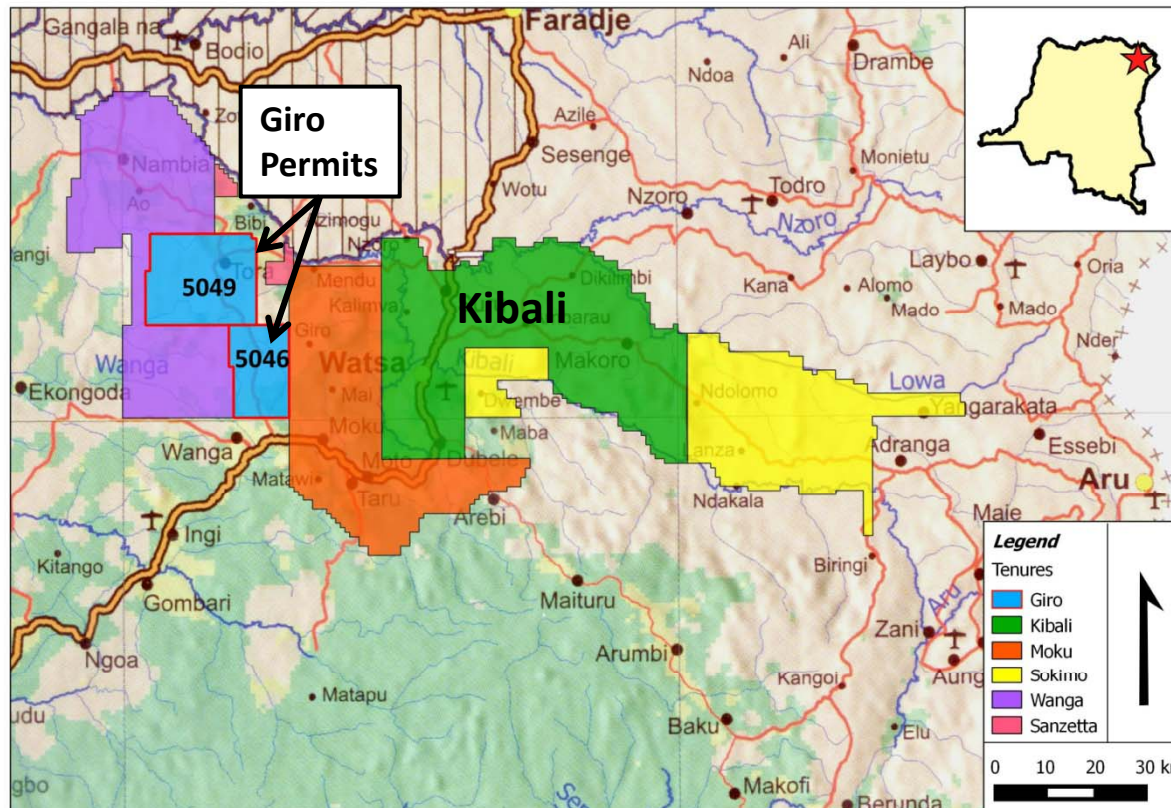
BUREY GOLD



- Democratic elections witnessed President Joseph Kabila re-elected in 2011
- New mining code introduced in 2002 (under revision)
- Majors are investing in DRC mining sector: Gold (Randgold Resources, AngloGold Ashanti, Banro), Copper/cobalt (Freeport McMoran, Katanga Mining, Anvil Mining, Metorex)
- China investing in infrastructure for rail, roads and power to develop sustainable production

Giro Project – Northeast DRC

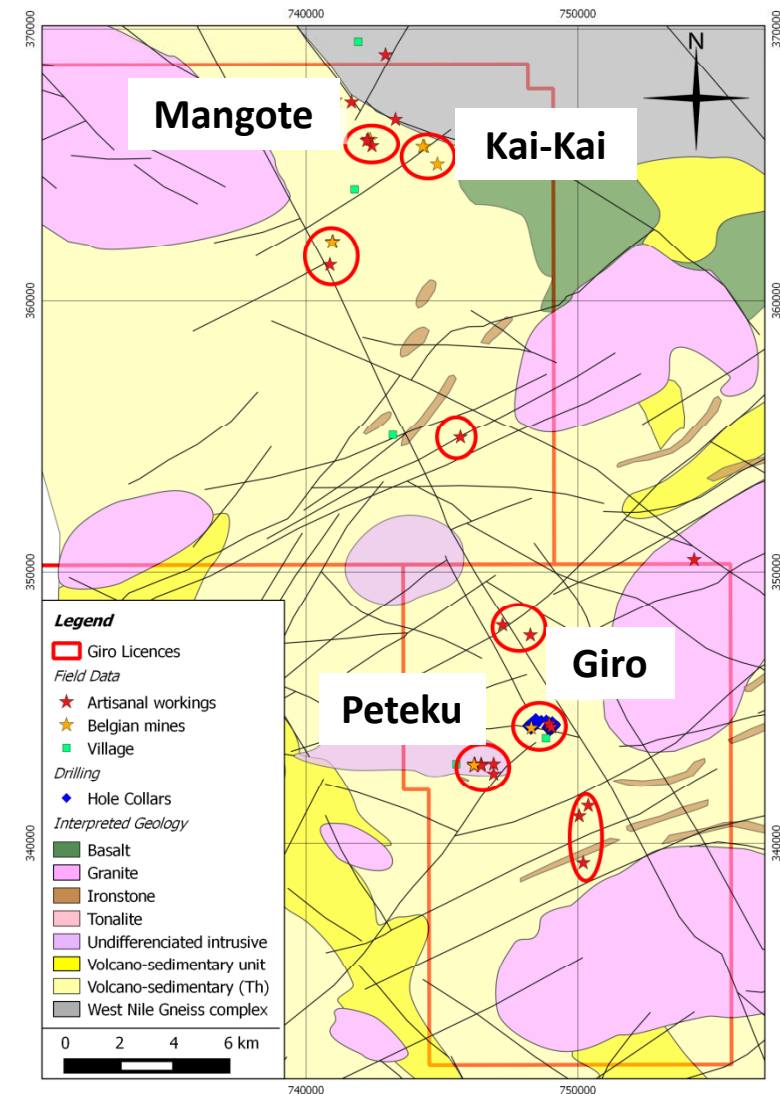
BUREY GOLD



- Two permits covering 610 km² (PEs 5046 & 5049) in the Moto Greenstone Belt
- 20-30km west of Randgold's 17 Moz Kibali deposits
- Same volcano-sedimentary host rocks as Kibali
- Good access (savannah vegetation)
- Good maintained road to Kampala (Uganda) – highly developed
- Drilling programmes to commence during third quarter

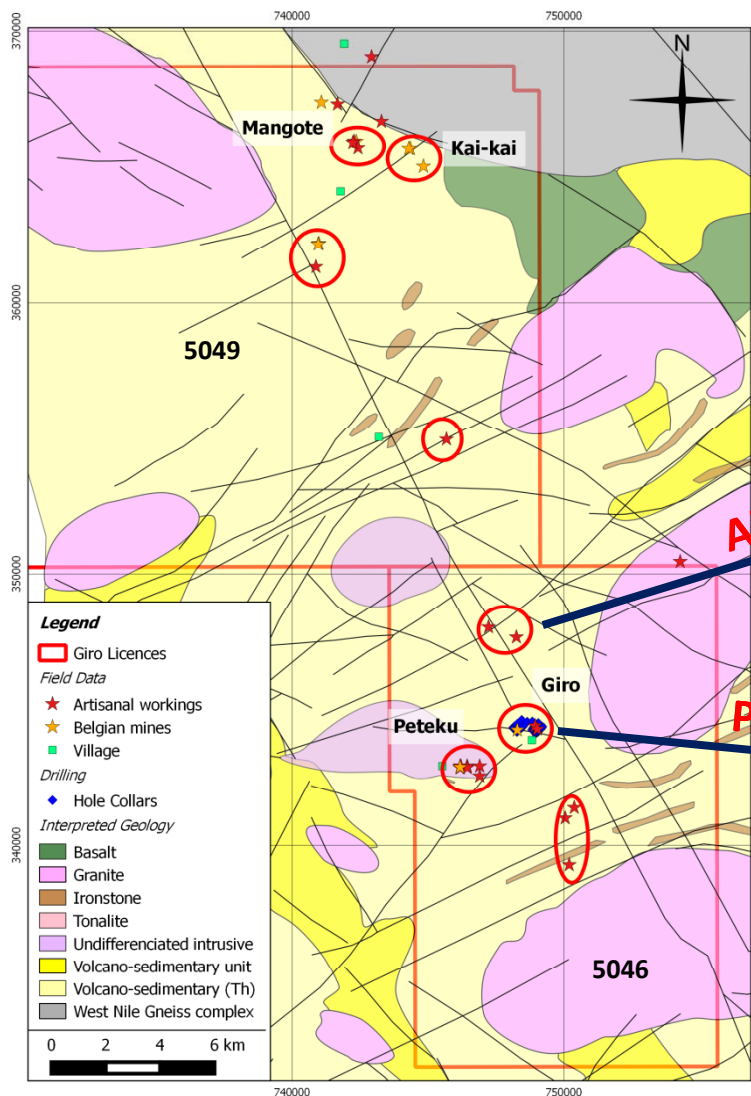
Giro Project

- 5 main target areas along a major NW trending structure
- **Giro Prospect**
 - 2 high grade quartz veins mined during Belgian colonial rule (total length of 500m)
 - Drilling confirmed mineralization in two separate structures reporting grades up to 18m @ 7.8g/t Au & 20m @ 4.15g/t Au
- **Tora Prospects**
 - 2 Belgian pits along 4km W-E structure (**Mangote & Kai-Kai**)
 - Historic drilling grades of 0.8m @ 21.6g/t Au, 0.6m @ 31.5g/t Au, 0.35m @ 485g/t Au
- **Peteku Prospect**
 - Belgians mined high grade quartz vein in granite



Giro Project – Artisanal Workings

BUREY GOLD

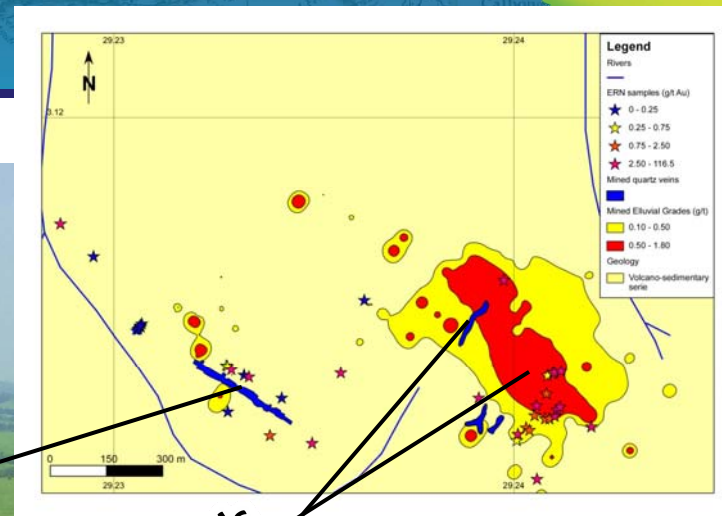
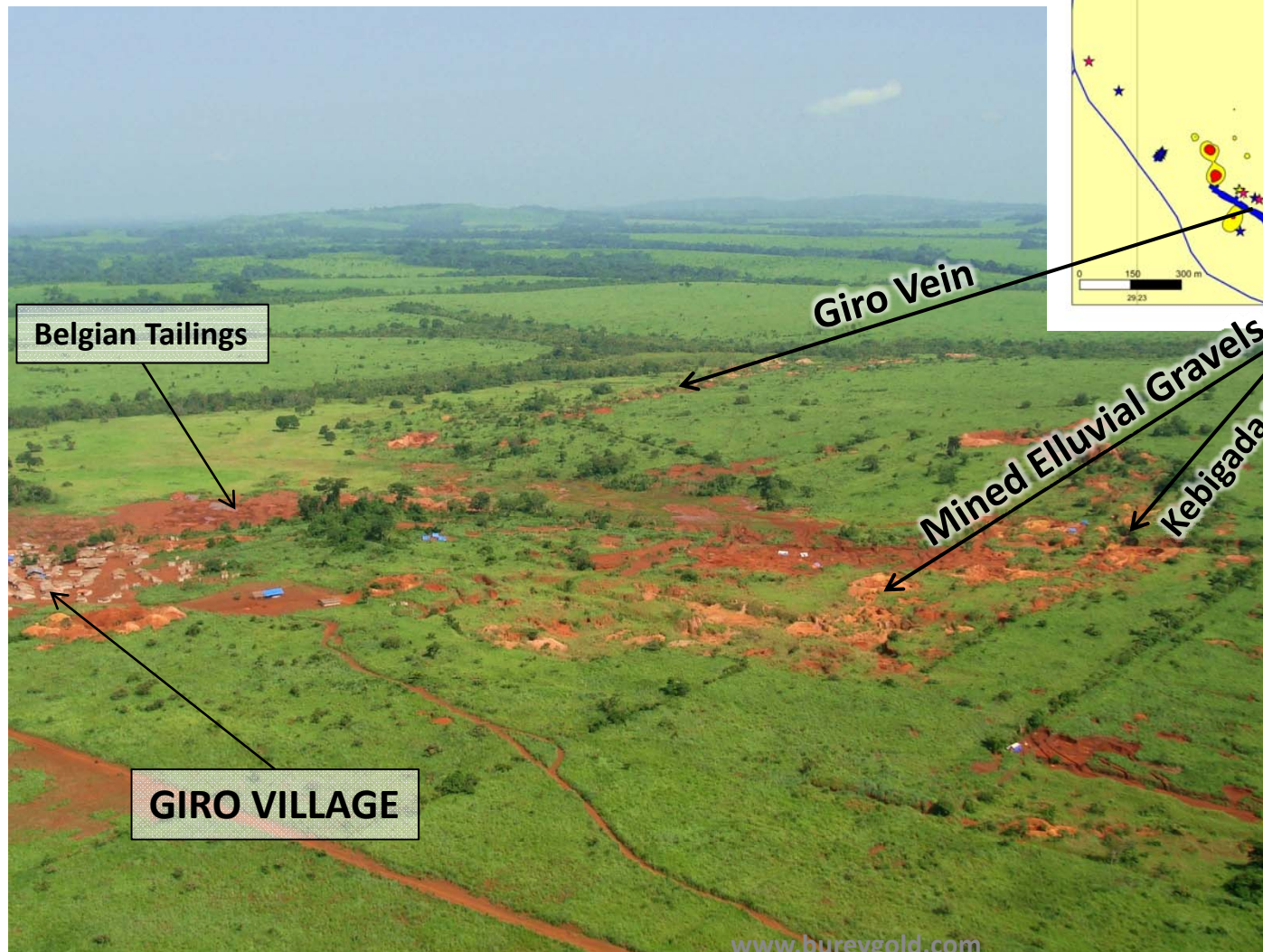


Alluvial workings

Primary Workings - Giro



Giro Prospect



Giro Prospect - Drilling

BUREY GOLD

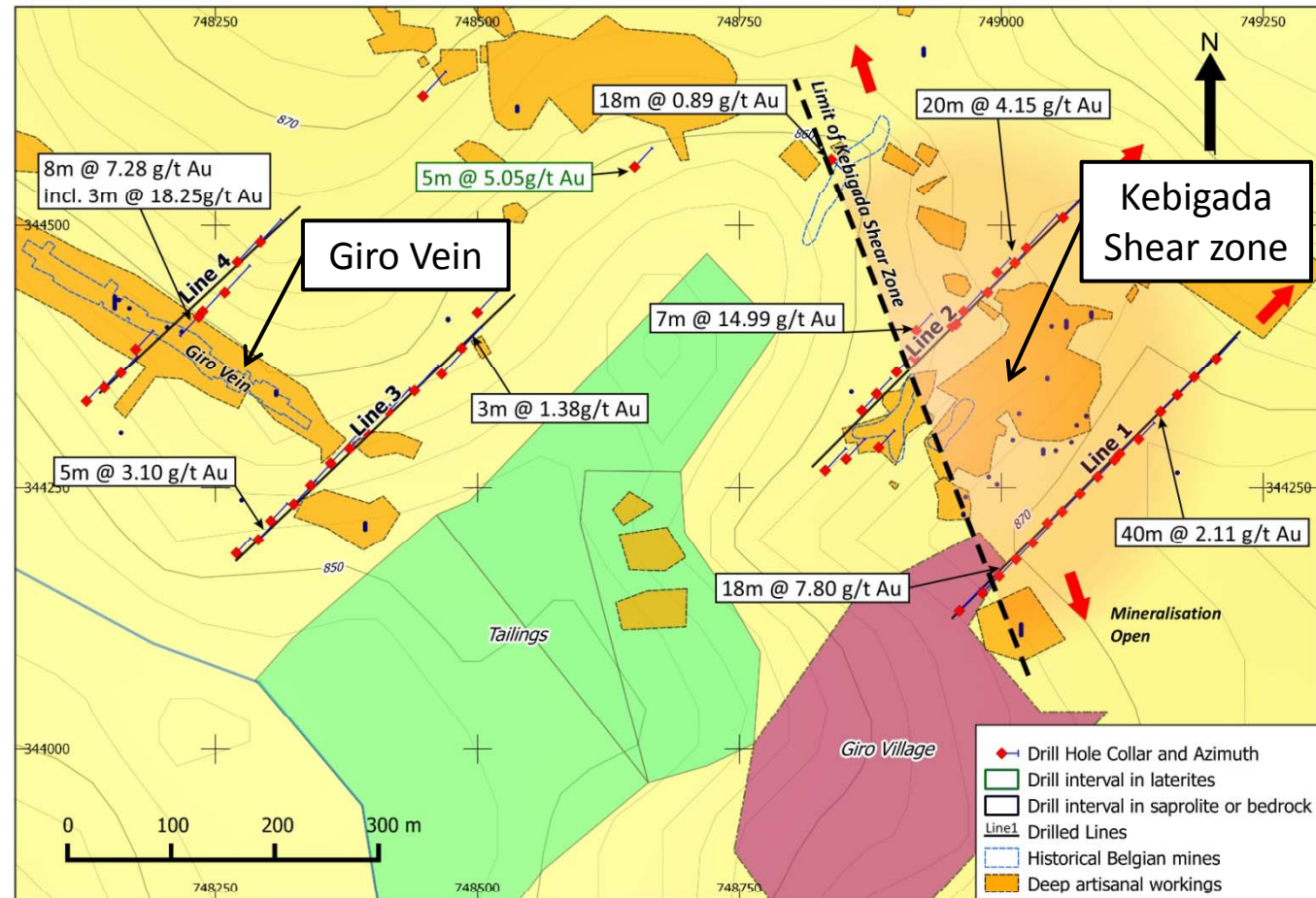


- 57 RC holes completed for 2,888m (February 2014)
- Mineralisation in **2 separate structures** - NW trending Kebigada Shear & Giro Vein
- Significant Results – Kebigada Shear:
 - **18m @ 7.8g/t Au** from 31m (GRRC003)
 - **23m @ 2.65g/t Au** from 28m (GRRC023)
 - **7m @ 14.99g/t Au** from 12m (GRRC024)
 - **20m @ 4.15g/t Au** from 17m (GRRC030)
- Significant Result – Giro Vein
 - **8m @ 7.28g/t Au** from 52m (GRRC036)

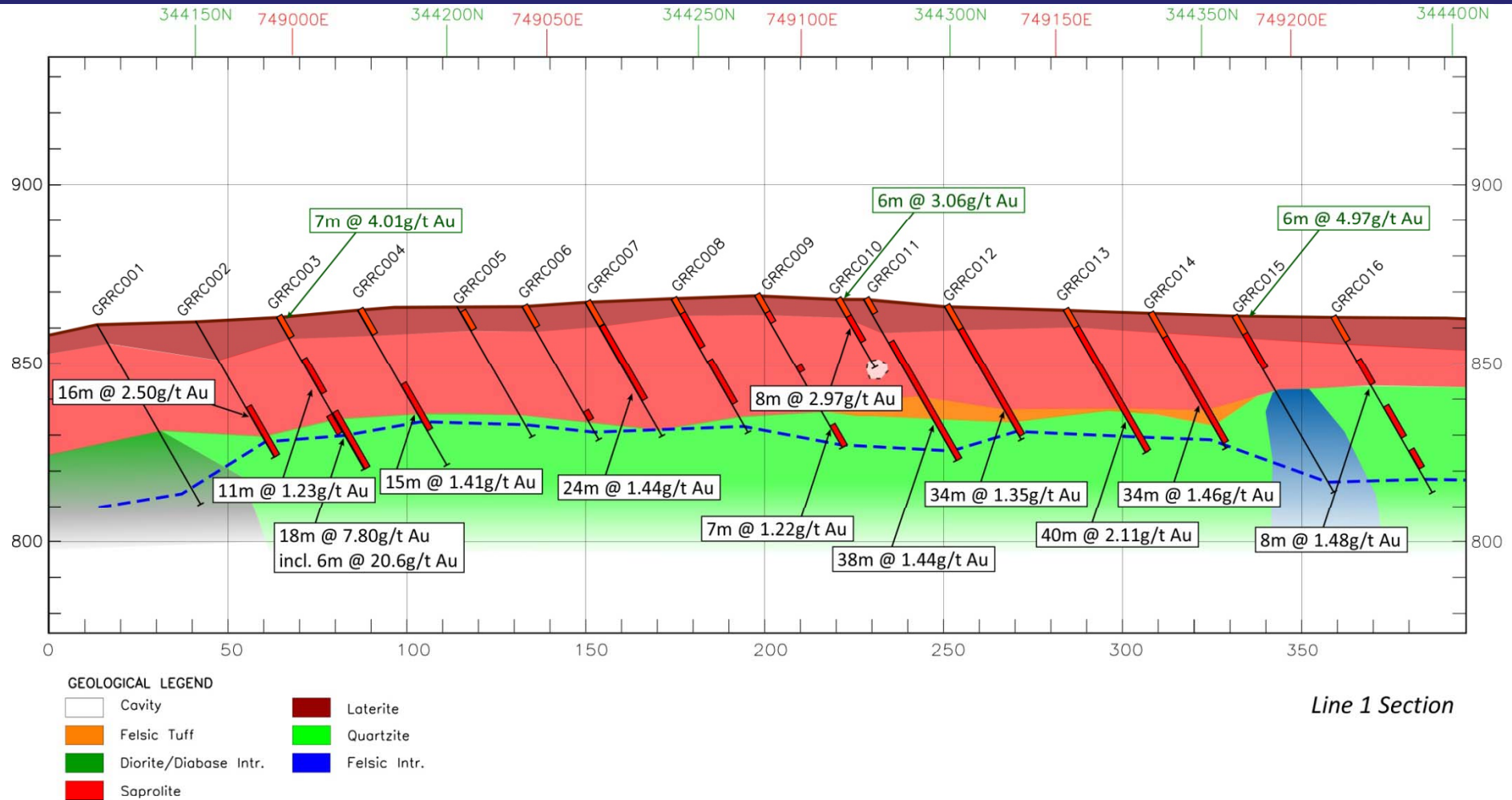
Giro Prospect - Mineralisation

BUREY GOLD

- Mineralisation defined over +300m width at Kebabada Shear Zone (open to N, S & E)
- Narrow high grade mineralisation associated with Giro Vein
- Excellent potential for gold discovery at open pittable depths



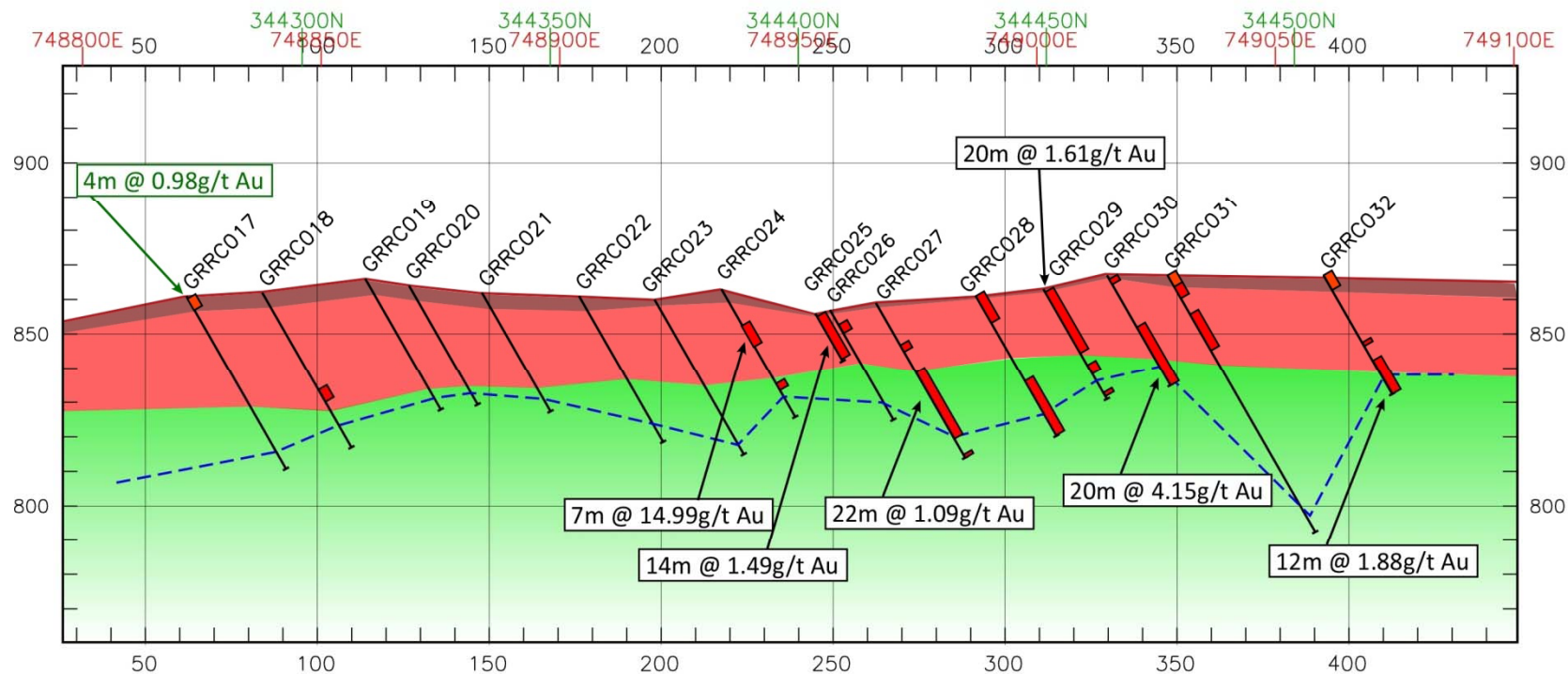
Section 1 Across Kebigada Shear



Line 1 Section

Section 2 Across Kebigada Shear

BUREY GOLD



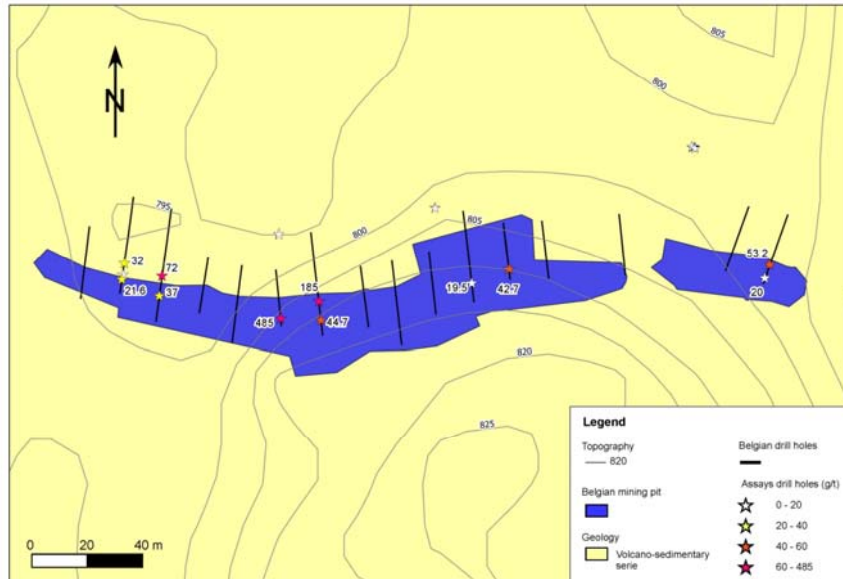
GEOLOGICAL LEGEND

	Cavity		Saprolite
	Felsic Intrusive		Laterite
	Felsic Tuff		Quartz veining
	Diabase/Diorite Intr.		Quartzite

Line 2 section

Mangote & Kai-Kai Prospects

BUREY GOLD



- Mineralisation focused along 4km W-E trending shear
- Belgian historical drill results (quartz veins) included:
 - 0.8m @ 21.6g/t Au
 - 0.6m @ 37g/t Au
 - 0.35m @ 485g/t Au
 - 0.2m @ 85.2g/t Au
- Pit mined down to 40m
- Wallrock channel sampling included 11.5m @ 0.89g/t incl. 7m @ 1.12 g/t Au & 3m @ 1.18g/t

Terms of Acquisition

BUREY GOLD



- Burey to acquire 85% interest in Amani Consulting sprl (55.25% interest in the Giro Project) by issuing 62.4m shares to Amani and 55.7m shares to Panex
- 47.5m options to Amani, exercisable at \$0.05 by 31 December 2016
- US\$300,000 to Amani in cash or Burey shares
- Burey to sole fund to development stage
- US\$5,350,000 to Amani upon discovery of 3Moz @ 2.5g/t Au of measured and indicated gold resources.
- US\$2.5m to DRC Government and US\$700,000 to Sokimo on DFS completion and decision to mine
- Burey has a first right on Amani's remaining 15%

Giro Site Pictures



Ongoing drilling



Repaired access road



Giro camp



RC samples preparation

Guinea, West Africa

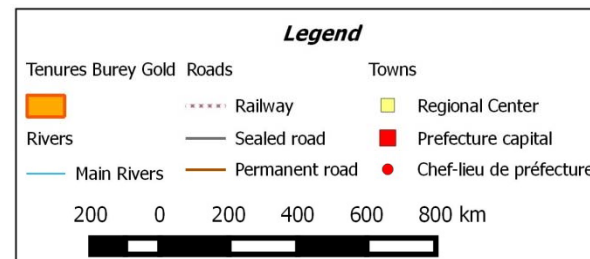
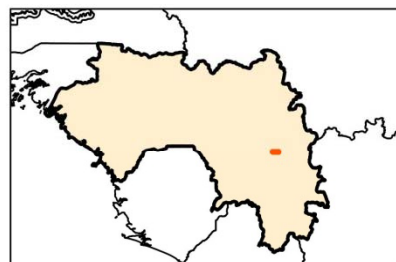
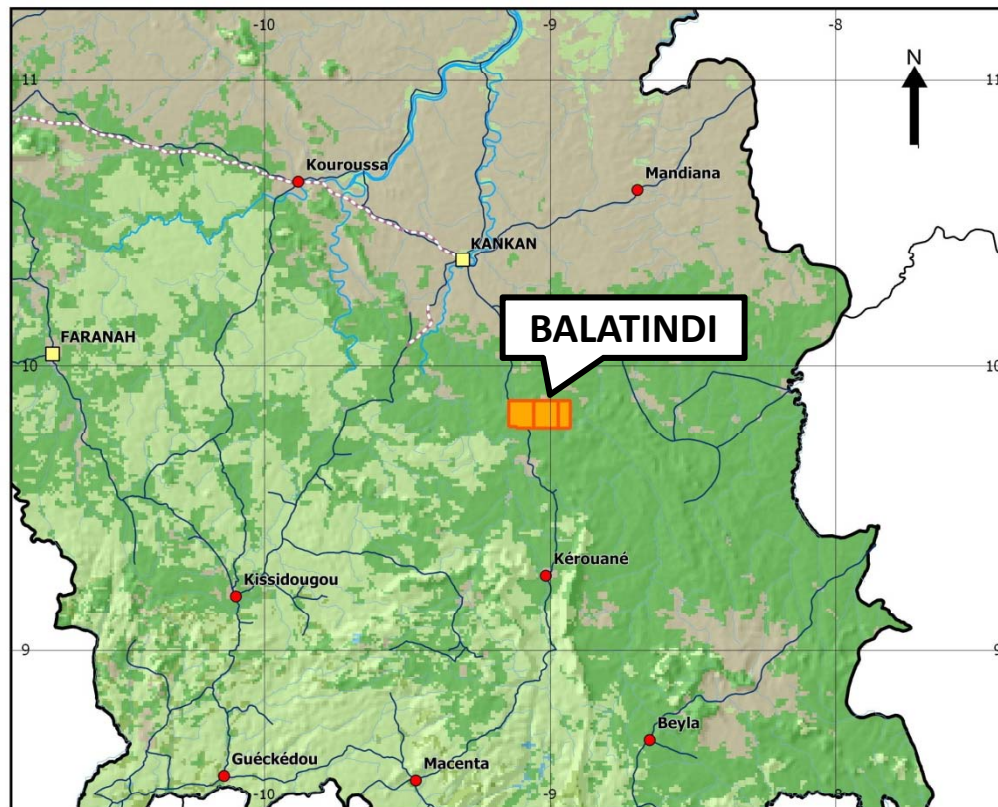
BUREY GOLD



- Mining is Guinea's major source of foreign exchange
- Holds 25% of world's high grade reserves of bauxite
- New Mining Code adopted in September 2011
- Presently 15% Government free-carry but adds the option to purchase an additional 20% contributing interest at an agreed price with the investor

Balatindi Project – East Guinea

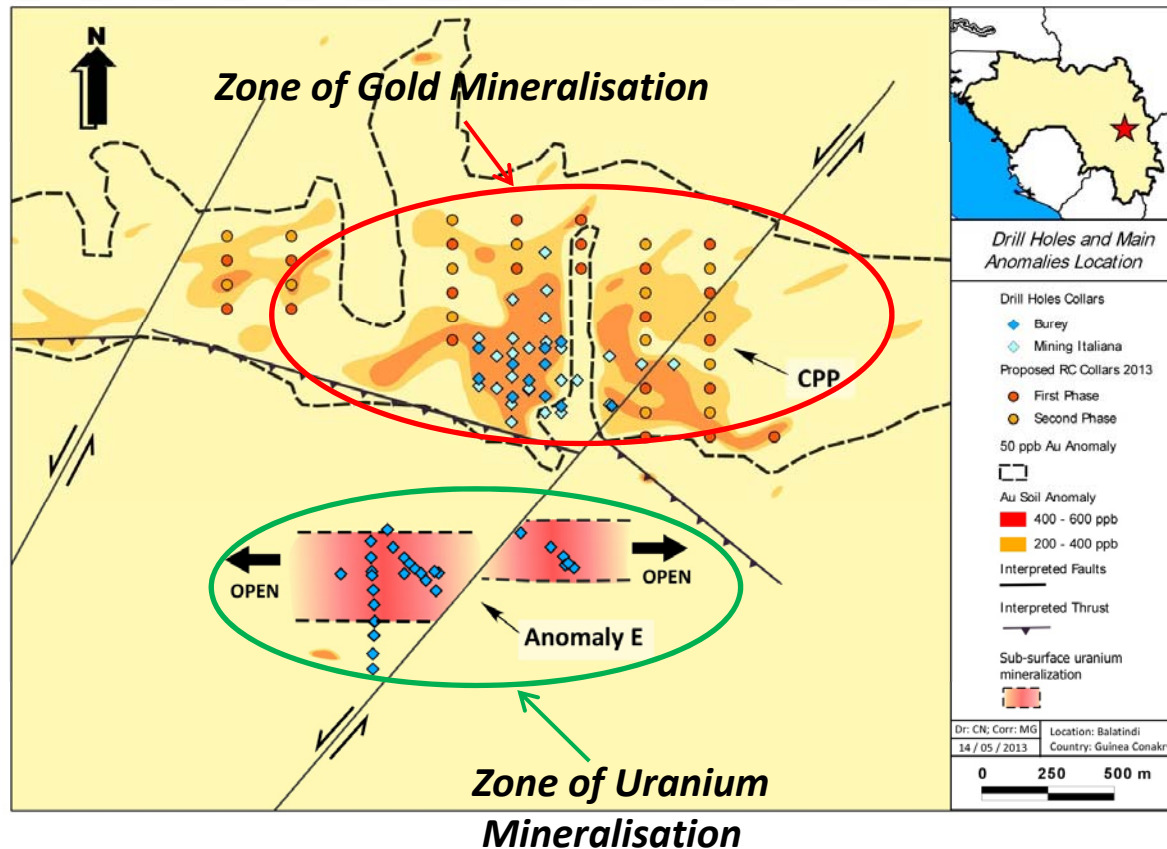
BUREY GOLD



- Three adjoining properties covering 249 km² in the Bale Mylonitic Zone (tectono-magmatic belt between Archean basement & Siguiri basin in the north)
- Good potential for **gold, uranium and copper** mineralization
- Good potential for large bulk tonnage deposit
- Good access throughout the year
- Plans to commence an RC drilling programme to determine true strike extent of mineralized zone

Balatindi – Mineralisation

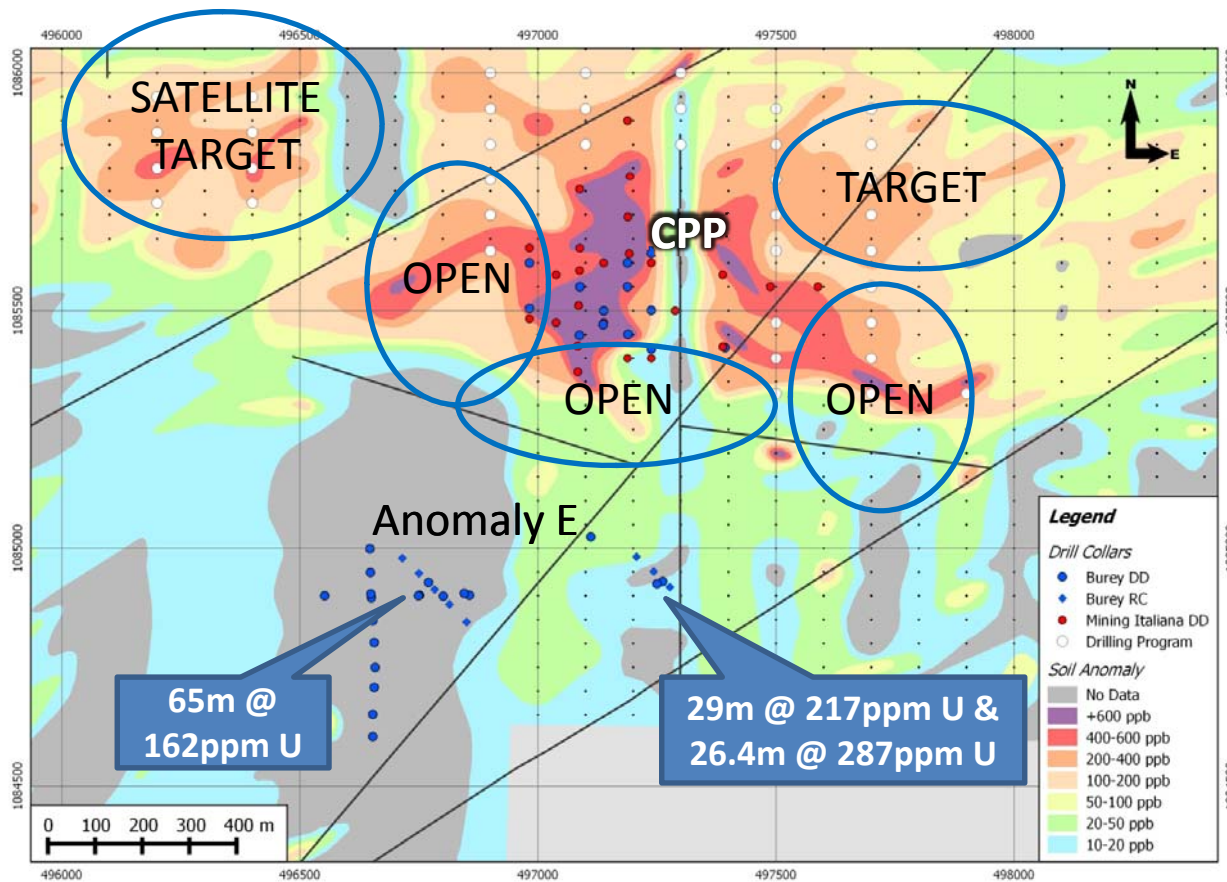
BUREY GOLD



- System divided in **two zones**: **Gold** mineralisation to the North (**CPP**), **Uranium** to the South (**Anomaly E**)
- Geological model between IOCG and porphyry type deposit (lacking iron)
- Historic drilling (Mining Italiana) confirmed gold mineralisation from surface to depths exceeding 100m
- Gold in soil anomaly defined over 4.5km (>50ppb) - CPP
- Uranium mineralisation over 400m – Anomaly E
- Strong copper association

Future Work - Balatindi

BUREY GOLD



- Complete process to acquire a 90% ownership interest in the Project
- Conduct 3,000m RC drilling programme to follow up on targets at CPP (dips 40-50 degrees to the south)
- Define potential open pitable resource

Summary

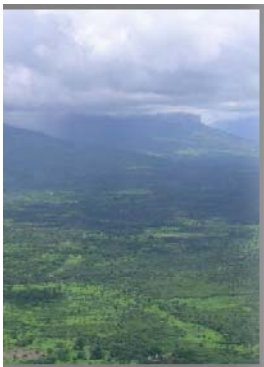
BUREY GOLD

- Giro project has the same geological setting as Randgold's 17-million ounce Kibali Gold deposits
- Giro has excellent potential for the discovery of multi-million ounce gold deposits
- Balatindi has potential to host significant, open pittable gold and uranium resources
- Management team has discovered more than 20 million ounces of gold and 1 million tonnes of copper

Burey Gold Limited

BUREY GOLD

Thank You



BUREY GOLD





Contacts

BUREY GOLD

www.bureygold.com

Ph: +61 8 9381 2299

Klaus Eckhof, Chairman:

eckhofk@crcpl.com.au

Nathan Ryan, Investor Relations:

nathan.ryan@nwrcommunications.com.au

Ph: +61 3 9622 2159