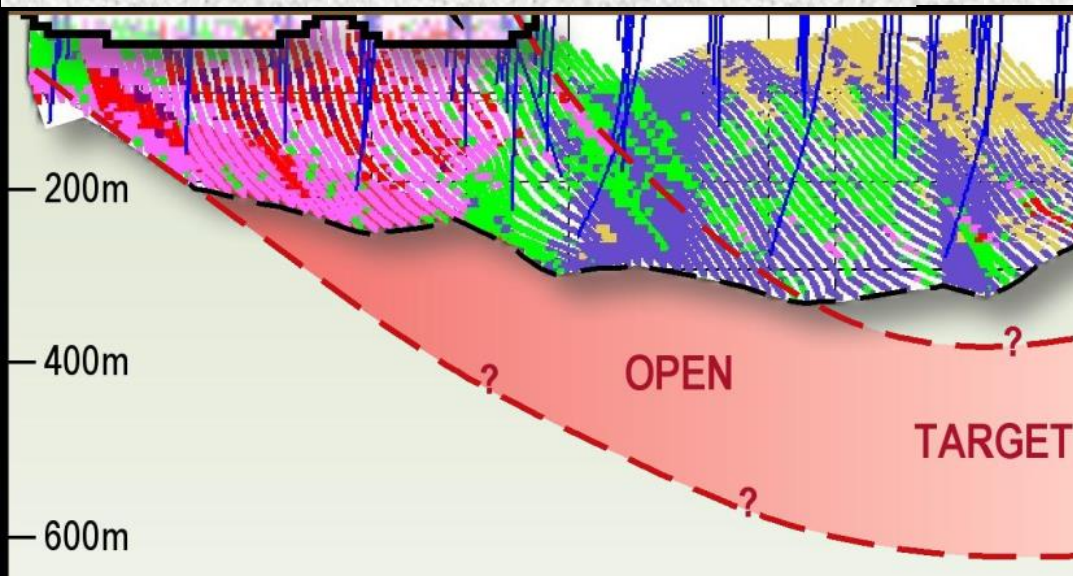




MOD RESOURCES LTD

BOTSWANA COPPER/SILVER PROJECT – August 2014

Exploring for Copper, Silver & Platinum/Palladium
in the central Kalahari Copper Belt in Botswana



BOARD AND MANAGEMENT TEAM



Mark Clements – Chairman & Company Secretary. 19 years' experience in corporate accounting and public company administration. Since 1997 he was CFO and Company Secretary of Medical Corporation, which changed its name to MOD Resources in 2011. Company Secretary for a number of ASX listed companies.

Julian Hanna – Managing Director. Geologist with 35 years' experience in gold, nickel and base metal exploration, development and mining. Co-founder and former Managing Director and CEO for Western Areas during 12 years period the company became Australia's 2nd largest nickel mining company operating two highest grade underground nickel mines in Western Australia. Now non exec director of Western Areas.

Simon Lee AO – Director and MOD's largest shareholder (>17%). Singapore based investor with very successful track record as an investor and director of operating gold mining companies in Australia including Great Victoria Gold, Samantha Gold, Equigold and Regis Resources. Awarded Order of Australia

Steve McGhee – Non Executive Director. Metallurgist with >25 years experience in metallurgy, plant design and commissioning and ore processing. Co-founder and director of Independent Metallurgical Operations, Australia's largest metallurgical consulting group. Extensive experience in Australia, SE Asia & S America

Jacques Janse van Rensburg – MOD's General Manager Exploration, Botswana. Geologist with 27 years' experience planning and managing large scale resource projects in Africa. Formerly Project Manager building significant resources for Hana Mining before its acquisition by Cupric Canyon for \$88M in 2012.

Paul Angus – Director of Sams Creek Gold Ltd and MOD's Project Manager Exploration responsible for Sams Creek Gold Project. Geologist with >25 years' experience in New Zealand. Formerly Mining, Exploration and Development Manager for OceanaGold Corporation based at the Macraes Gold Mine near Dunedin.

MOD RESOURCES LIMITED

Aim : progress Botswana Copper Project towards potential development

KALAHARI COPPER BELT, BOTSWANA

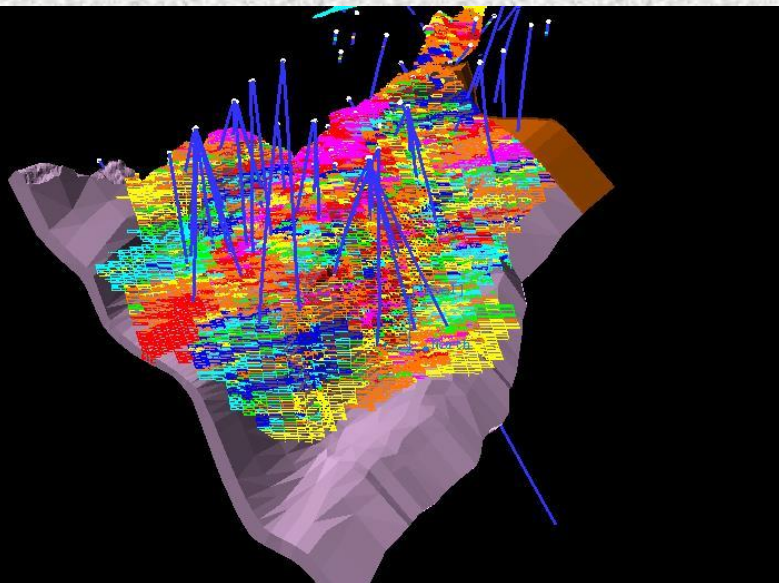
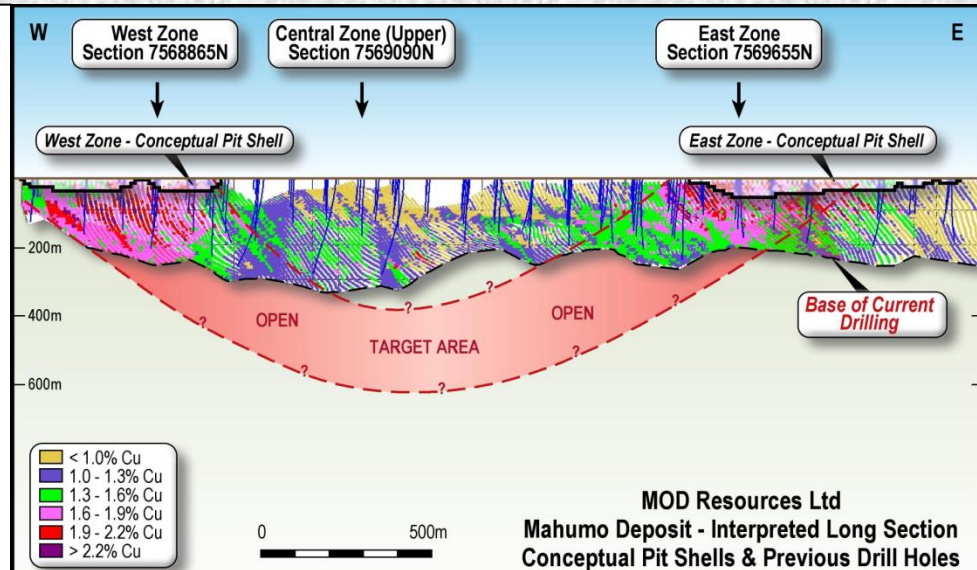
Current Total ~4Mt Cu in Kalahari Copper Belt
Significant new discovery (Cupric Canyon)

MOD 2nd Half 2014 Objectives:

Mahumo – Infill and extensional drilling
Complete initial mining study

Molelo Intrusion – follow up drilling PGM, Cu

Marthie & Boseto West – drill priority targets



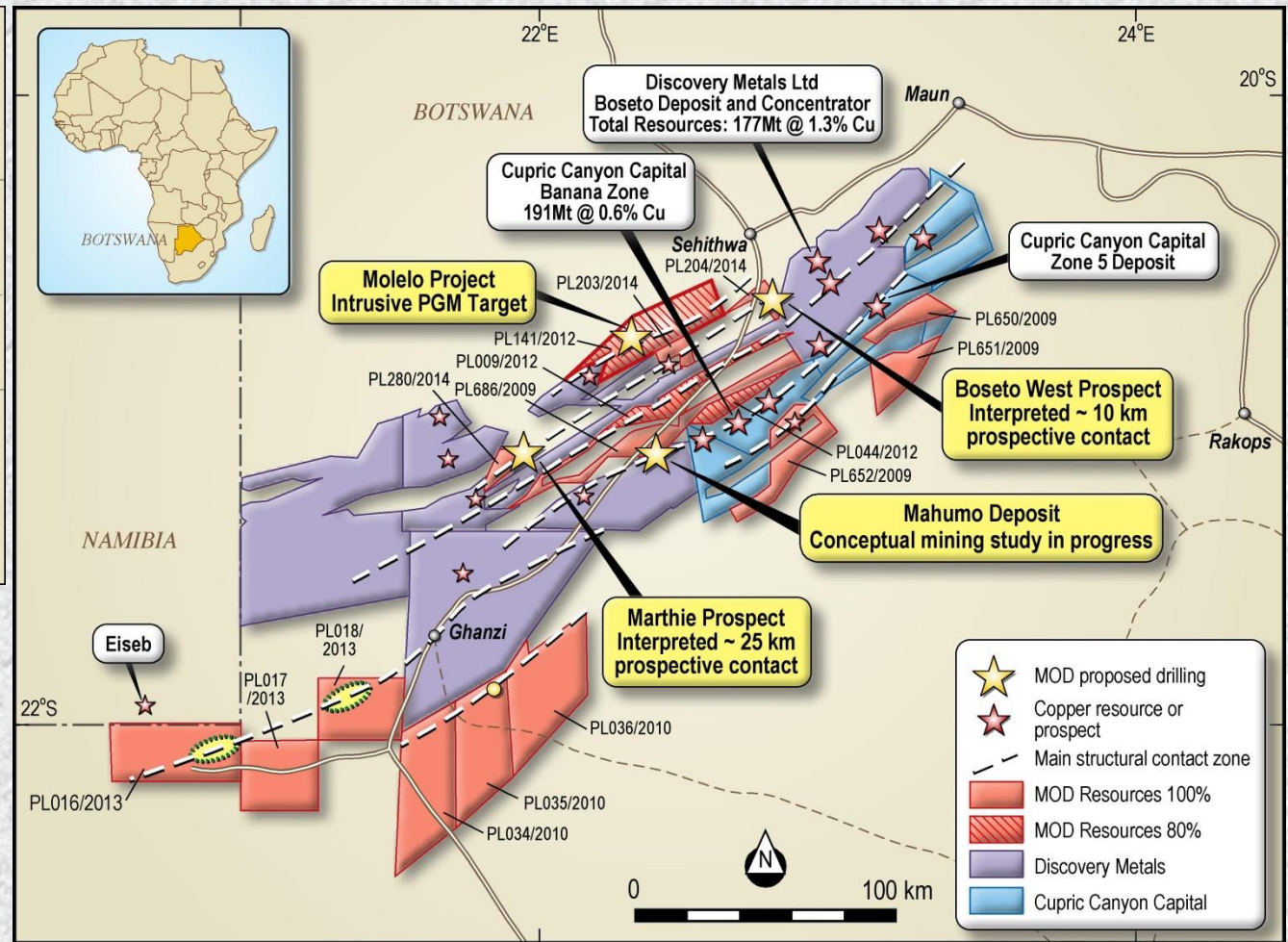
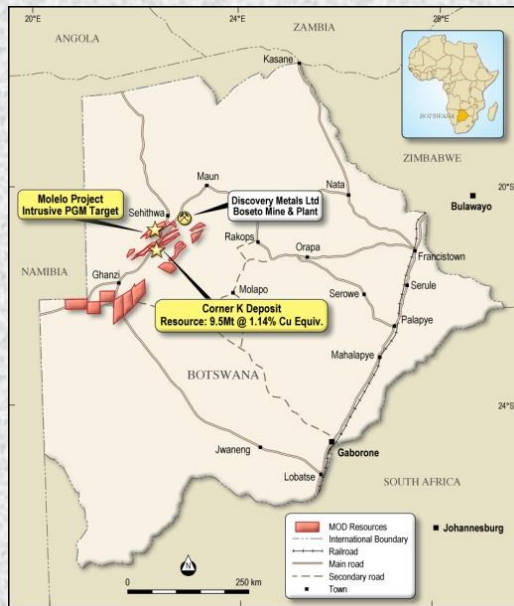
NEW ZEALAND GOLD PROJECT (60%)

MOD can earn 80% of Sams Creek Project.

1.0Moz gold resource in porphyry host.

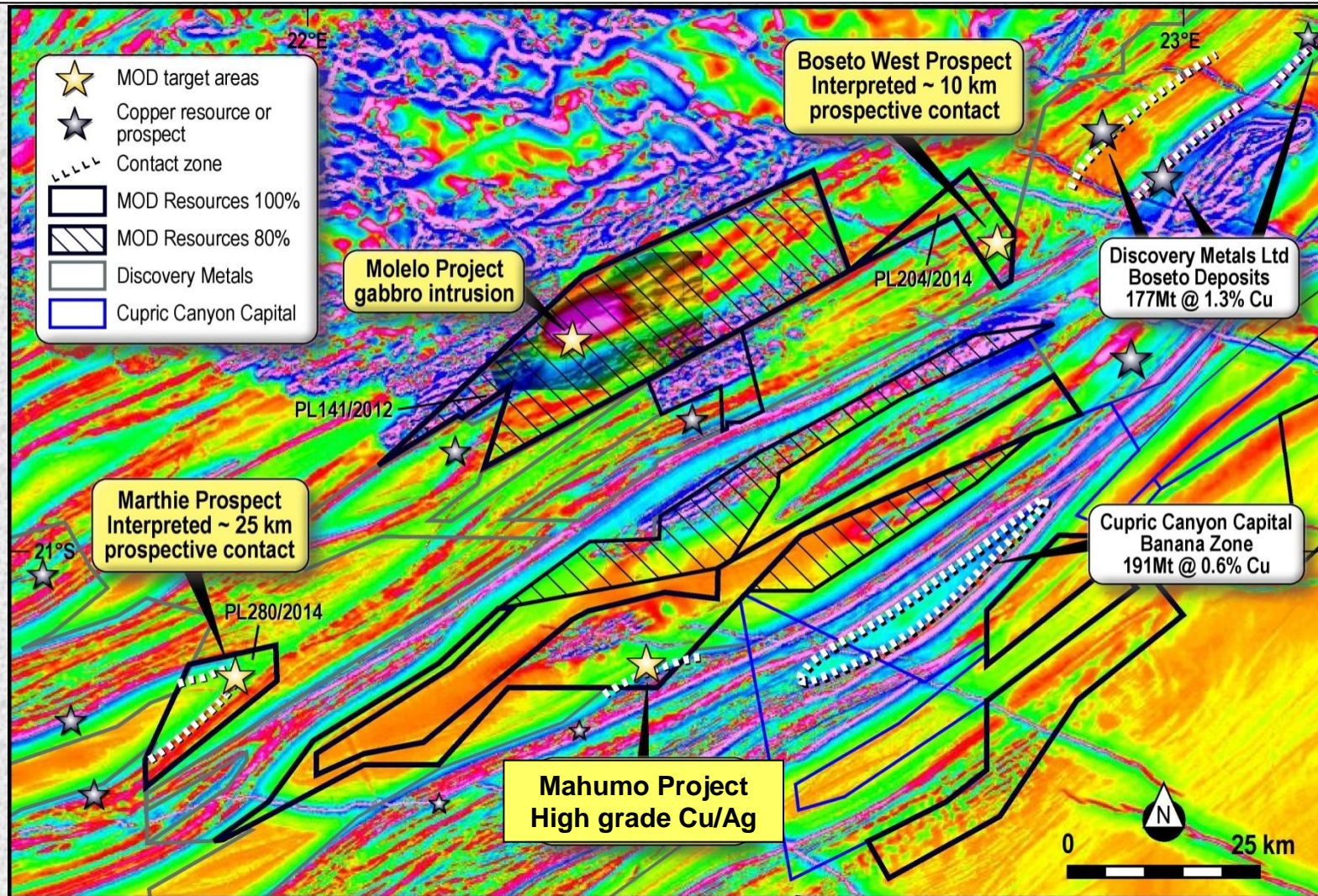
Open along strike and at depth

BOTSWANA COPPER PROJECT



- Under-explored Kalahari Copper Belt. ~4Mt copper in mineral resources, mostly shallow
- Targets : structurally related high grade Cu/Ag deposits & mafic intrusive PGM/Cu deposits
- Key to new discoveries: geophysics, structural interpretation, deep drilling (>200m depth)
- MOD: 4 main project areas. Initial conceptual mining study underway at Mahumo Project

CENTRAL COPPER BELT – MOD PROJECT AREAS



- Magnetic image : Mahumo Deposit, Molelo Intrusion, Marthie Prospect, Boseto West Prospect
- MAHUMO most advanced project. Conceptual open pit and u/ground mining study commenced

MAHUMO – Two >500m long, high grade Cu/Ag deposits, open at depth

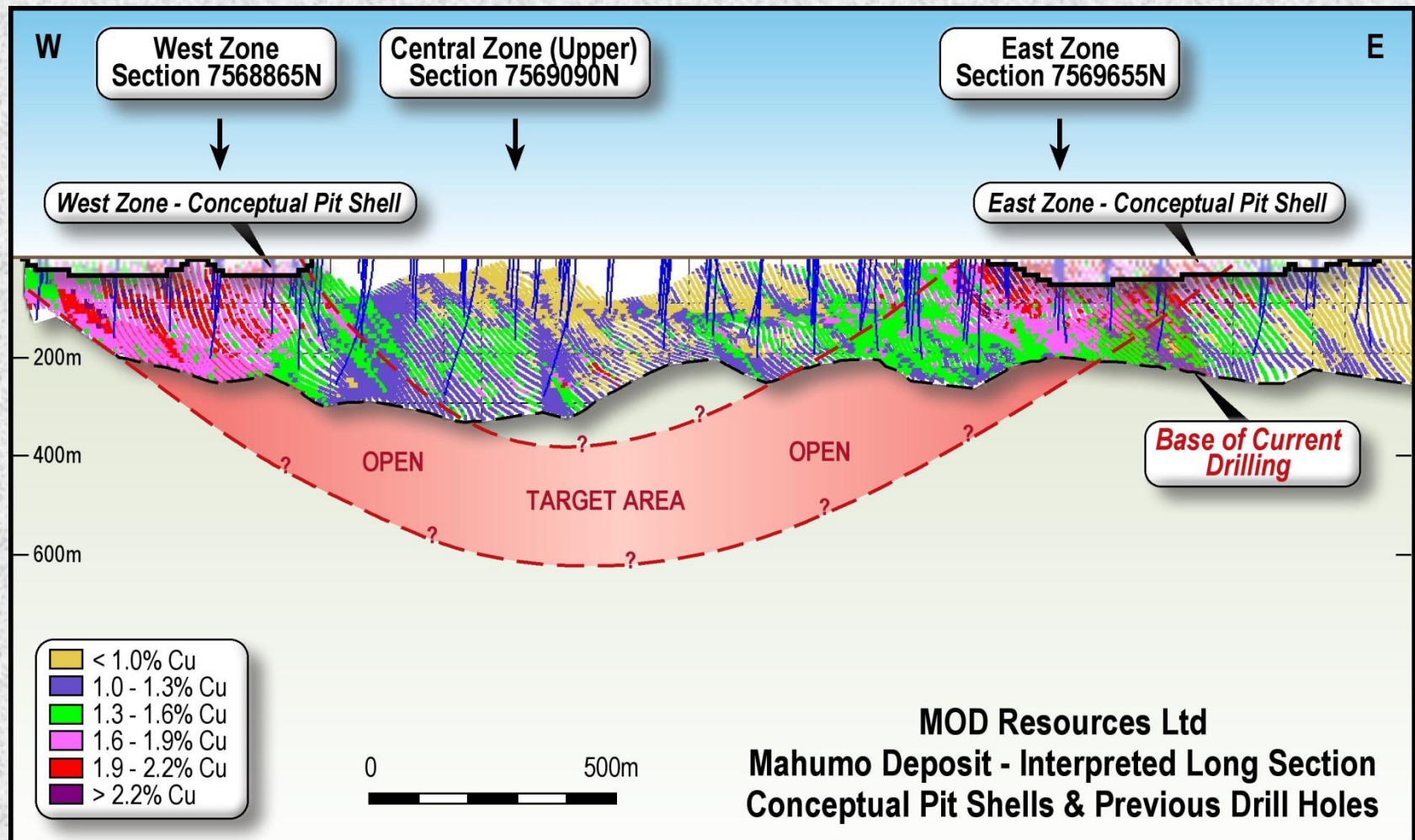
SUMMARY & PROPOSED OBJECTIVES – next six months (subject to ongoing results and funding):

- Mahumo drilling on 100m spaced sections along 2.5km strike length. Deepest intersection ~200m
- Initial conceptual open pit and underground study in progress (based on early stage assumptions)
- Preliminary metallurgical test work encouraging. Shallow mineralisation mainly Cu sulphides
- Copper grades ~20-25% higher and Silver grades ~3 times higher than regional average resources
- Sand cover (estimated 5-6m) and depth of oxidation – both appear shallower than regional average

- Proposed Drilling next 6 months
 - 1 Infill drilling Mahumo conceptual pit shells & provide additional metallurgical samples
 - 2 Test for potential extensions to Mahumo 200m - 400m depth. Commence below West Zone
 - 3 Target structures along Mahumo contact for potential thickening of Cu/Ag mineralisation
 - 4 Follow up drilling at Molelo Intrusion. Initial drilling to test fold axis at Marthie Prospect

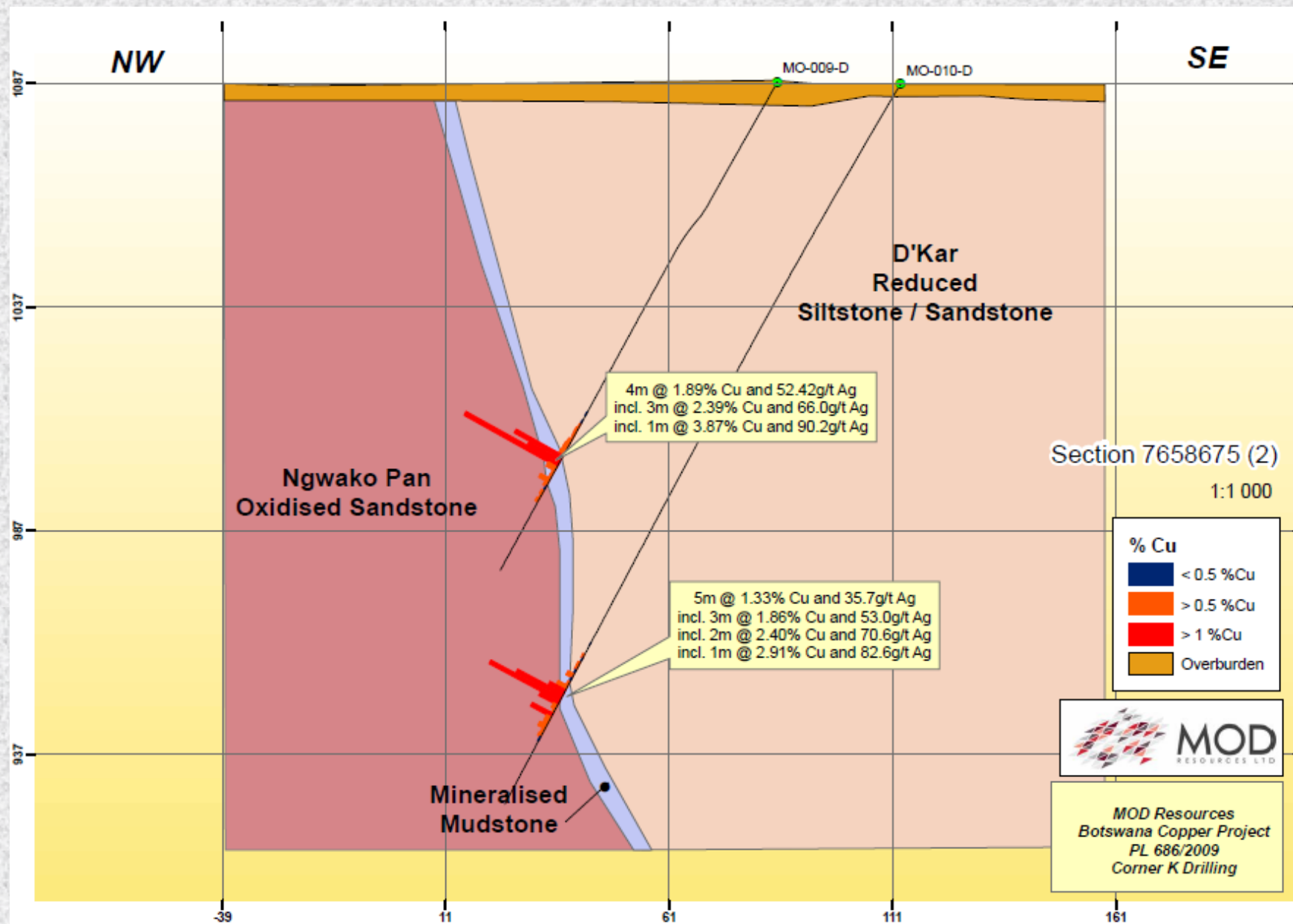
- Mineral resource estimate – revise Mineral Resource for Mahumo based on drilling results
- Conceptual mining studies – metallurgical test work, refine cost estimates, progress as appropriate
- Processing – conventional flotation appears favourable based on early test work and mineralogy

MAHUMO PROJECT – Two vein style Cu/Ag deposits along 2.5km strike

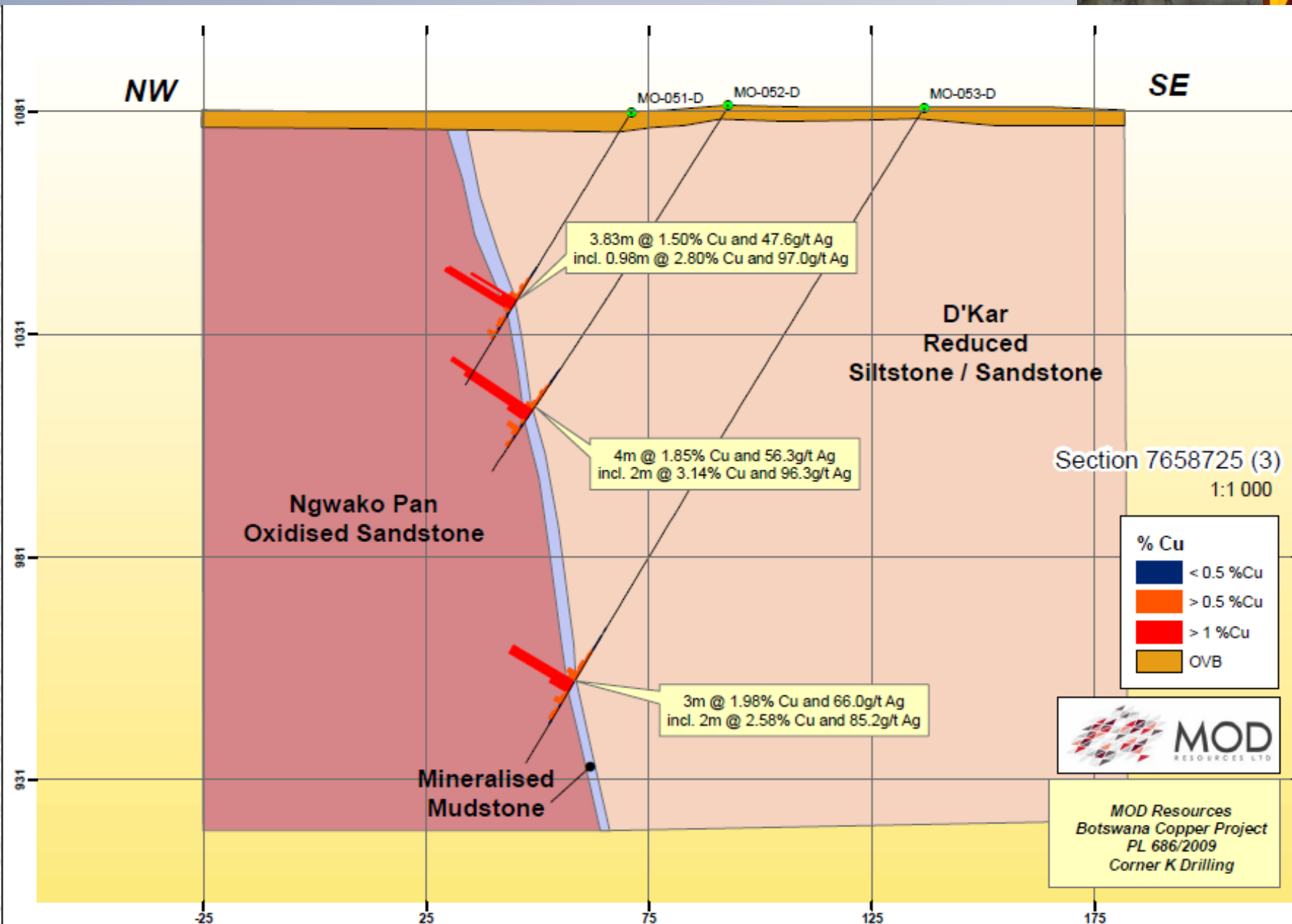


- Two >500m long high grade Copper/Silver zones (intersections range: ~1.5%-2.5% Cu, ~45-100g/t Ag).
- Metallurgical test work in progress - shallow Cu mineralisation appears dominantly sulphide
- Initial conceptual study in progress for 2 shallow pits (<50m) as access to potential underground
- Drilling planned to test extensions below high grade zones to ~400m depth. Commence at West Zone

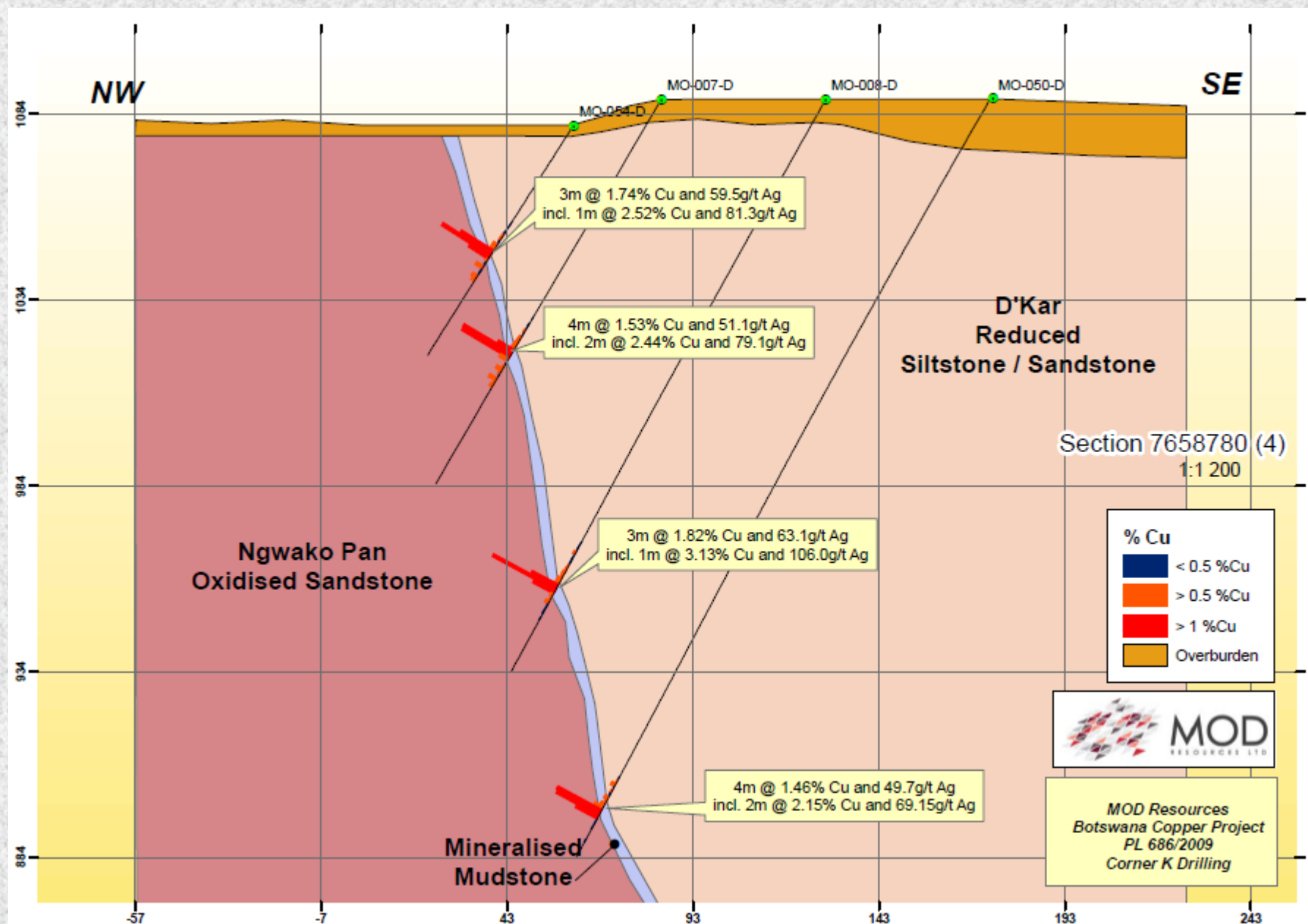
MAHUMO – West Zone section #2 (~100m spacing)



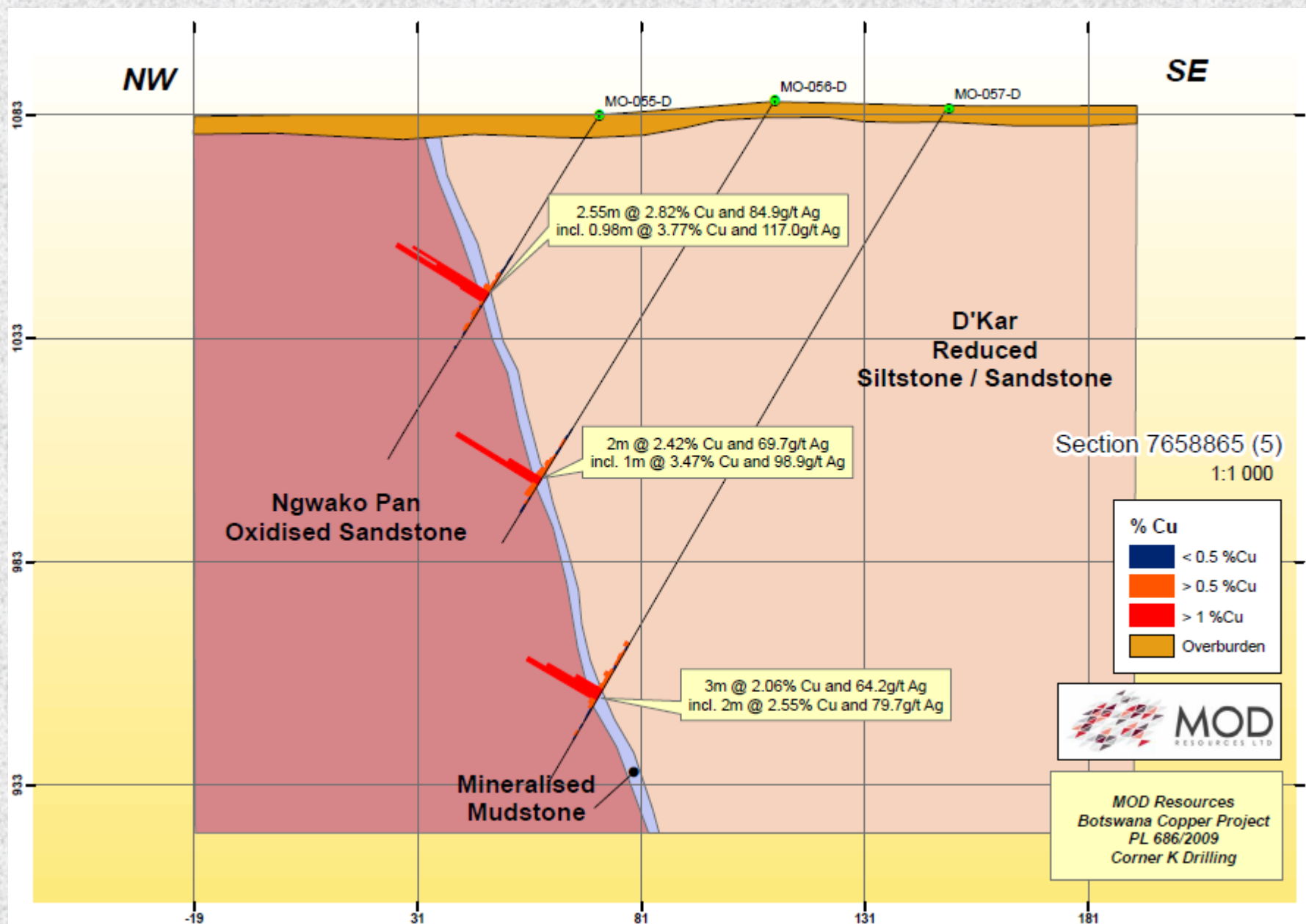
MAHUMO – West Zone section #3 (~100m spacing)



MAHUMO – West Zone section #4 (~100m spacing)



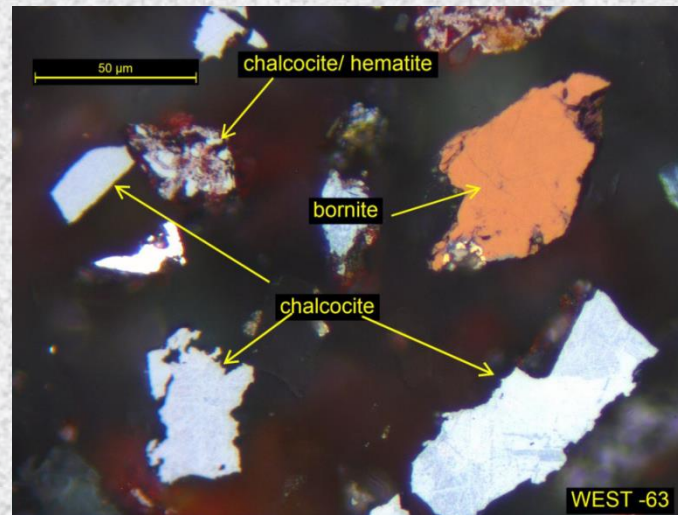
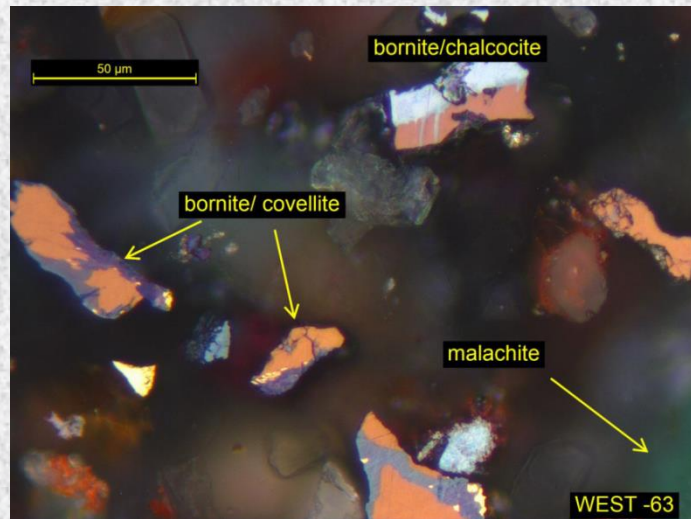
MAHUMO – West Zone section #5 (~100m spacing)



MAHUMO – confirmation of high grade Cu/Ag in shallow drill holes (<60m)

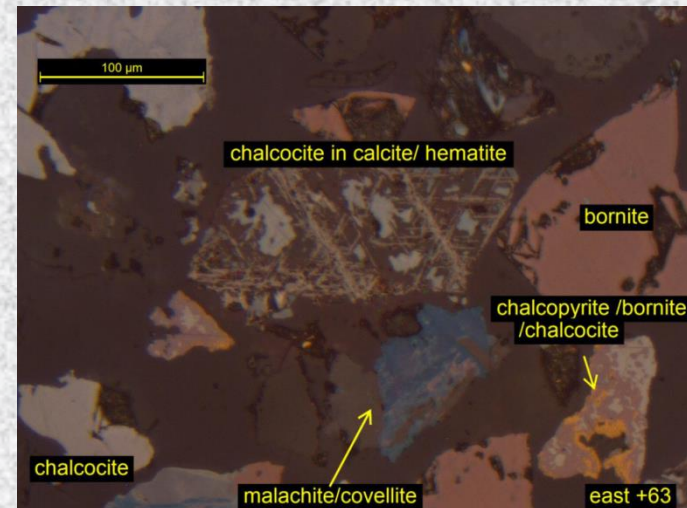
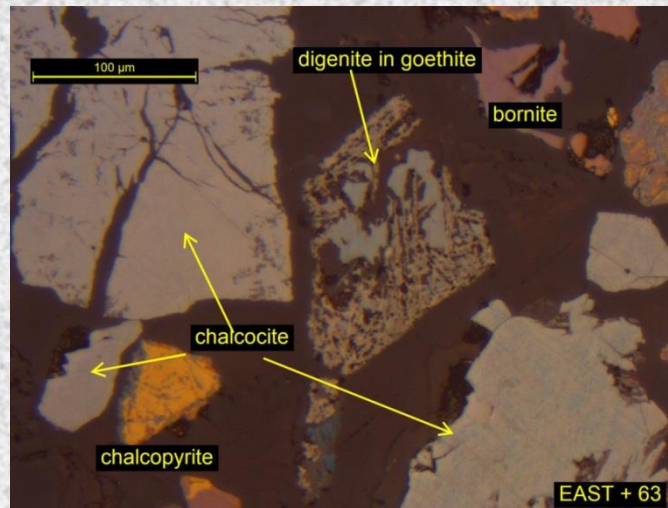
Mahumo Project : Sampling and Assay Sheet													
									Weighted Average of original Assays (ALS Results)		Composite Assays of Intersections (SGS Results)		
INTERSECTIONS		BHID	SAMPLE NO	FROM (m)	TO (m)	Ag (ppm)	Cu (%)	Acid Soluble Copper (%)	Geologist Comments	Cu %	Ag (ppm)	Cu %	Ag (ppm)
West Zone	1	MO-001-D	MO-296/D	21.0	22.0	56.4	2.75	2.26	Mainly chalcocite, minor malachite	1.9	30	2.1	48
		MO-001-D	MO-297/D	22.0	23.0	13.1	1.06	1.13					
		MO-001-D	MO-298/D	23.0	24.0	26.3	1.98	1.78					
	2	MO-002-D	MO-009/D	17.0	18.0	6.8	1.89	1.60	Chalcosite - chrysocolla	1.5	2	1.3	4
		MO-002-D	MO-010/D	18.0	19.0	-	1.42	1.22					
		MO-002-D	MO-012/D	19.0	20.0	-	1.06	0.88					
	3	MO-051-D	MO-1629/D	49.6	50.0	60.1	1.92	0.08	Mainly chalcocite	1.5	52	1.7	55
		MO-051-D	MO-1630/D	50.0	51.0	20.3	0.57	0.07					
		MO-051-D	MO-1632/D	51.0	51.5	87.4	2.73	0.16					
		MO-051-D	MO-1633/D	51.5	52.5	97.0	2.80	0.28					
	4	MO-054-D	MO-1663/D	40.0	41.0	58.4	1.67	0.18	Mainly chalcocite	1.8	60	2.0	58
		MO-054-D	MO-1664/D	41.0	42.0	81.3	2.52	0.24					
		MO-054-D	MO-1665/D	42.0	43.0	38.7	1.04	0.17					
	5	MO-055-D	MO-1690/D	46.9	47.3	94.0	3.23	0.86	Mainly chalcocite	2.8	84	2.2	85
		MO-055-D	MO-1692/D	47.3	48.1	62.2	2.16	0.20					
		MO-055-D	MO-1693/D	48.1	49.1	117.0	3.77	0.27					
		MO-055-D	MO-1694/D	49.1	49.4	30.8	0.99	0.50					
	6	MO-058-D	MO-1747/D	37.0	38.0	31.8	1.02	0.91	Malachite / chrysocolla	1.8	55	1.3	28
MO-058-D		MO-1748/D	38.0	39.0	67.8	1.92	1.60						
MO-058-D		MO-1749/D	39.0	40.0	64.9	2.37	2.01						
West Zone Composite											1.7	41	
East Zone	7	MO-087-D	MO-2710/D	56.00	57.00	7.5	3.20	0.32	Mainly chalcocite	2.9	54	2.1	28
		MO-087-D	MO-2714/D	59.00	60.00	90.7	3.54	0.33					
		MO-087-D	MO-2715/D	60.00	61.00	60.0	1.92	0.08					
	8	MO-090-D	MO-2852/D	45.00	46.00	39.9	1.32	0.07	Chalcocite - chrysocolla	2.8	80	2.8	76
		MO-090-D	MO-2853/D	46.00	47.20	108.0	3.88	0.90					
	9	MO-091-D	MO-2790/D	53.00	54.00	41.6	1.41	0.49	Mainly chalcocite, minor malachite	1.6	53	2.0	67
MO-091-D	MO-2792/D	54.00	55.00	23.3	1.08	0.48							
MO-091-D	MO-2793/D	55.00	55.50	113.0	2.74	0.76							
East Zone Composite											2.1	55	

MAHUMO – Mineralogy indicates copper sulphides in shallow concentrates



**WEST ZONE
CONCENTRATES**

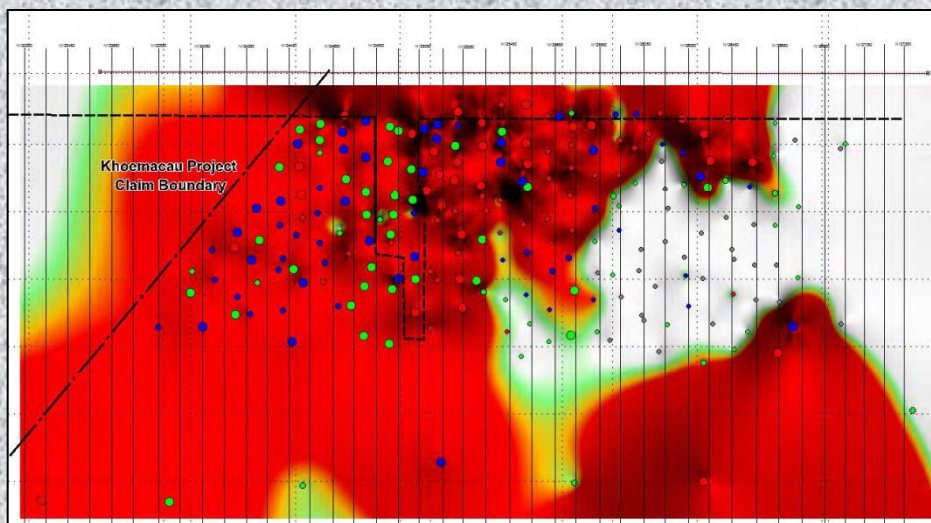
**EAST ZONE
CONCENTRATES**



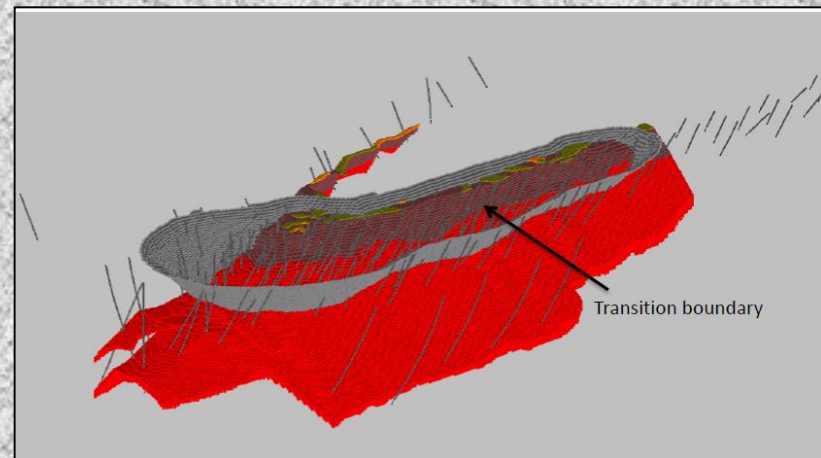
Mineralogy of HLS concentrates from composites of 9 drill hole intersections (17m – 60m depth) show :

- Cu sulphides ~78%. Malachite/goethite/hematite ~22%. Mineral liberation results very encouraging
- No Chrysocolla identified in concentrates - infill drilling and further test work required to confirm

Other Deposits Types : Cupric Canyon's - Zone 5 & NE Fold Copper Deposits Along or near the regional structure which hosts Mahumo Cu/Ag mineralisation



**Zone 5 : Long section to ~1,000m depth
(blue circles 1.5-2.0% Cu, red circles >2% Cu)**



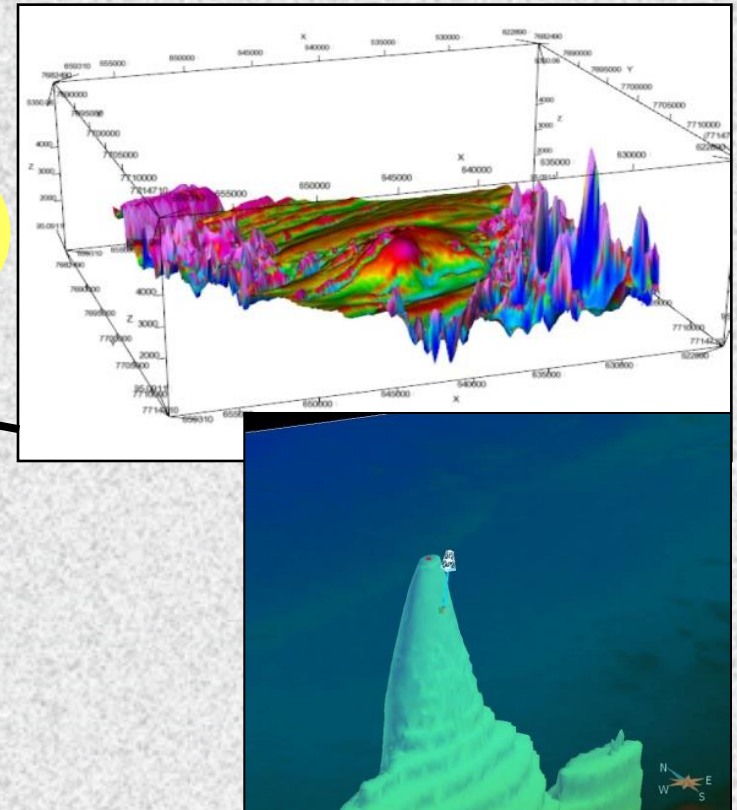
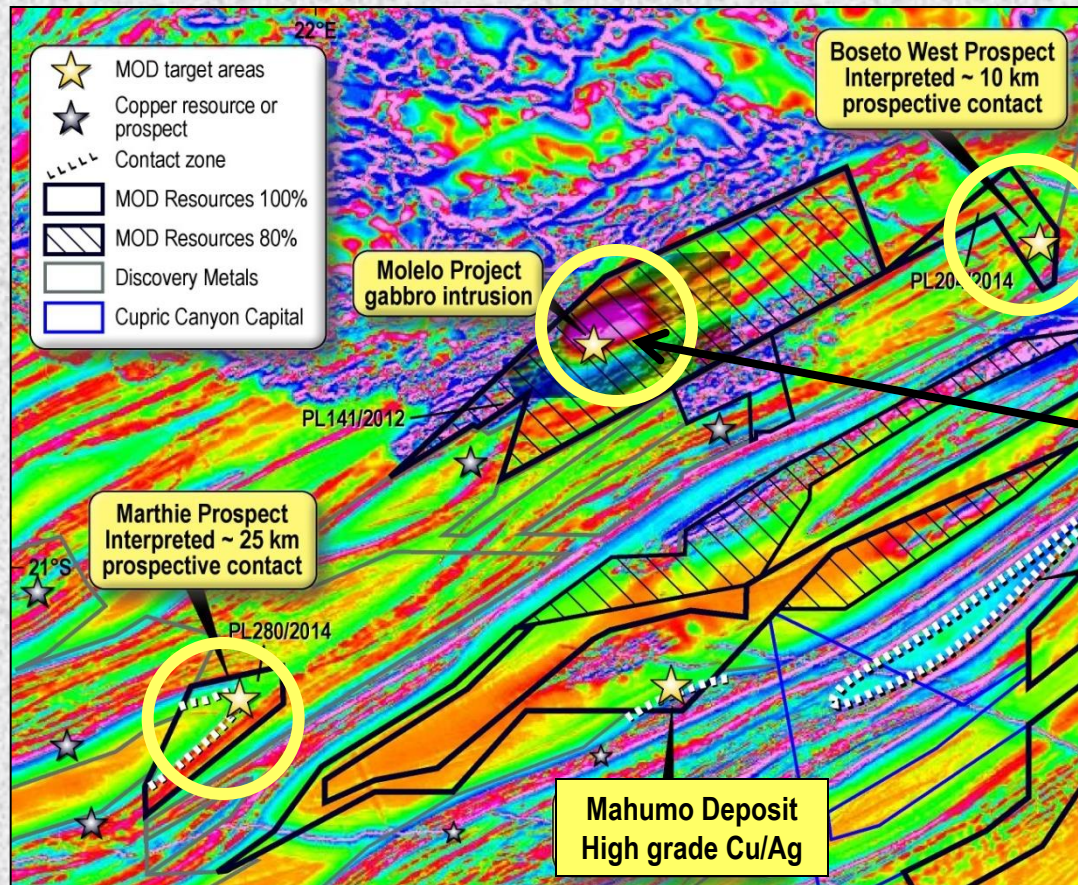
**NE Fold : oxide & primary Cu sulphides around
fold nose. Part of 'Banana Zone' resource**

Long Section & 3D model are from Cupric Canyon's Presentation

Mines Ministry Conference, Maun Botswana (July 2014) :

- **Zone 5 appears to be a significant emerging copper discovery. Drilling indicates high grade Cu mineralisation to ~650m, which is apparently open at depth**
- **Interpretation of Zone 5 long section : >1000m long, 1.5-2% Cu, >5m wide zone. Drilling to ~1000m depth appears to confirm potential for extensions**
- **Cupric's Zone 5 and NE Fold deposits confirm the potential of Kalahari Copper Belt for significant Cu deposits occurring in a range of different structural settings**

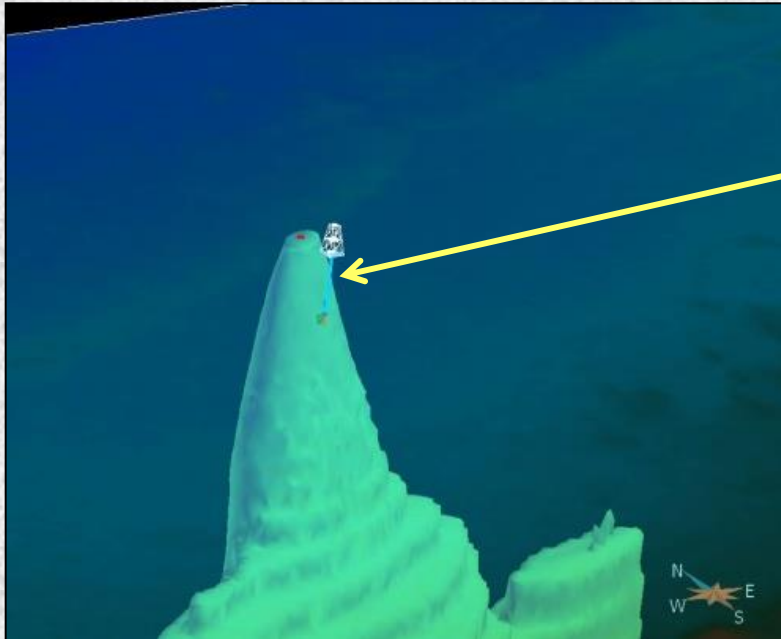
MOD RESOURCES - Molelo Intrusion, Marthie and Boseto West Prospects



- **Molelo Intrusion** : 10km magnetic anomaly along basement margin structure, elevated PGM in first hole
Drilling required to test interpreted core of intrusion for PGM & Cu sulphides
- **Marthie Prospect** : 25km structurally favourable contact interpreted – considered highly prospective
- **Bosteto West Prospect** : 10km favourable contacts interpreted – considered highly prospective

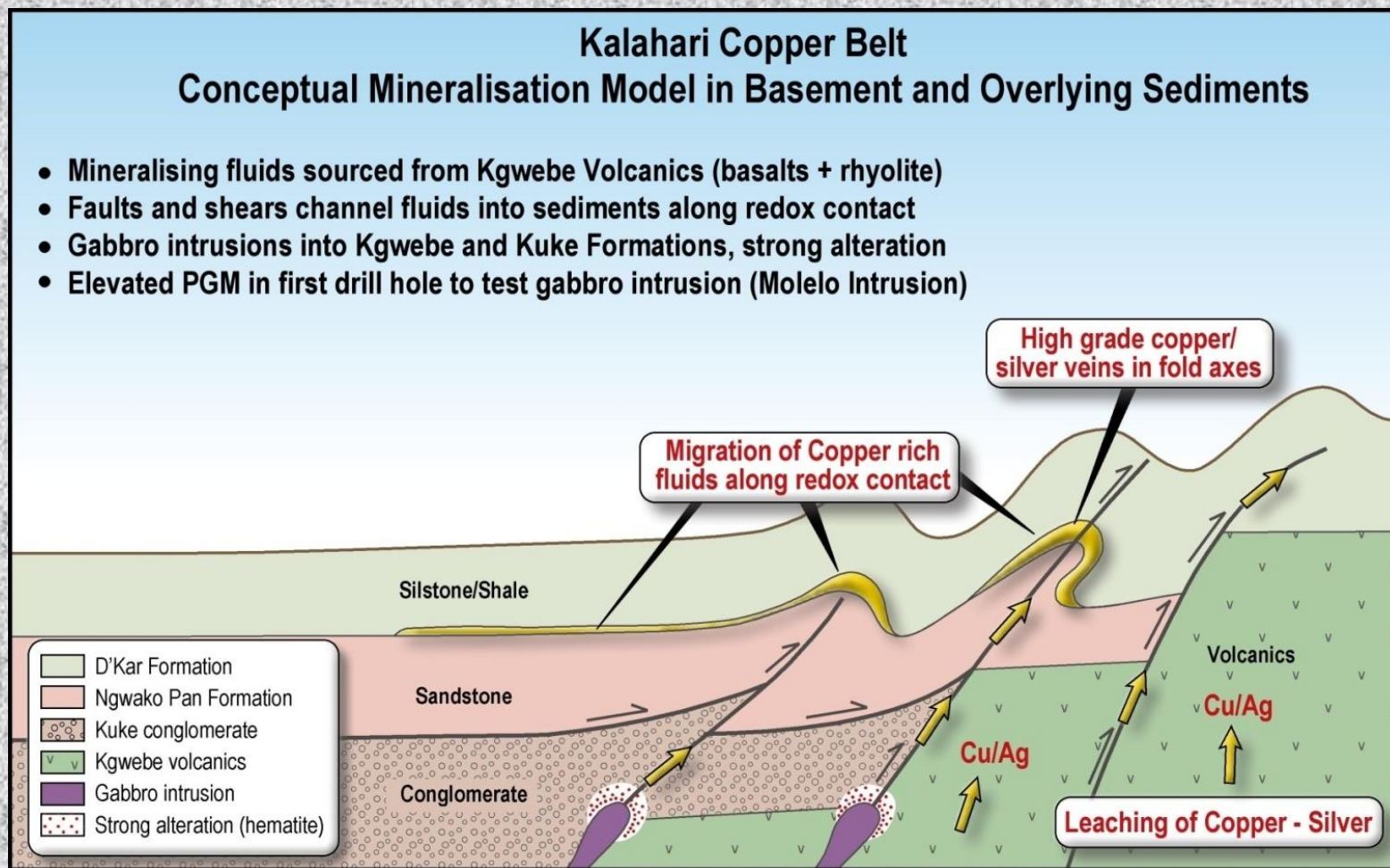
MOLELO INTRUSION – large (Est 10km long) altered magnetic intrusion

Only one drill hole to date, ~500m south of interpreted magnetic core



- Large, interpreted intrusion. Similarities to other global PGM/Cu and IOCG type settings
- ~100m of strongly hematite altered basal conglomerates and sediments intruded by mafic intrusion
- Strongly veined and hematite altered gabbro with elevated platinum/palladium assays
- Interpretation of magnetic data : first drill hole was ~500m south of magnetic core of intrusion

MINERALISATION MODELS – MOD planned drilling targets in sediments, volcanic basement & intrusions



DRILLING TARGETS:

Hydrothermal vein hosted high grade copper/silver deposits :

Mahumo Deposit

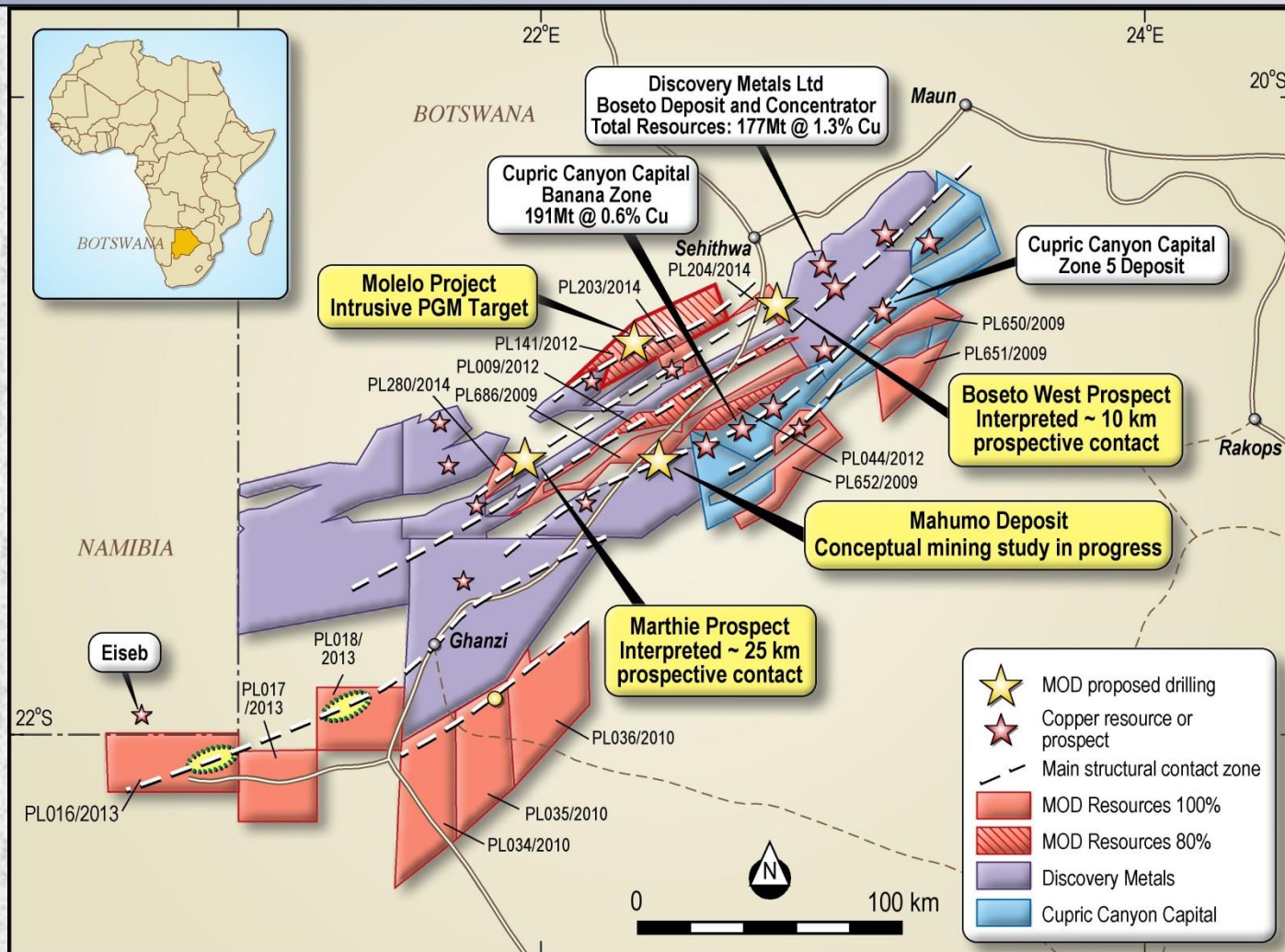
Intrusive related (Gabbro and IOCG Type) copper/PGM deposits :

Molelo Intrusion

Sediment hosted 'Boseto Type' copper/silver deposits :

Marthie Prospect

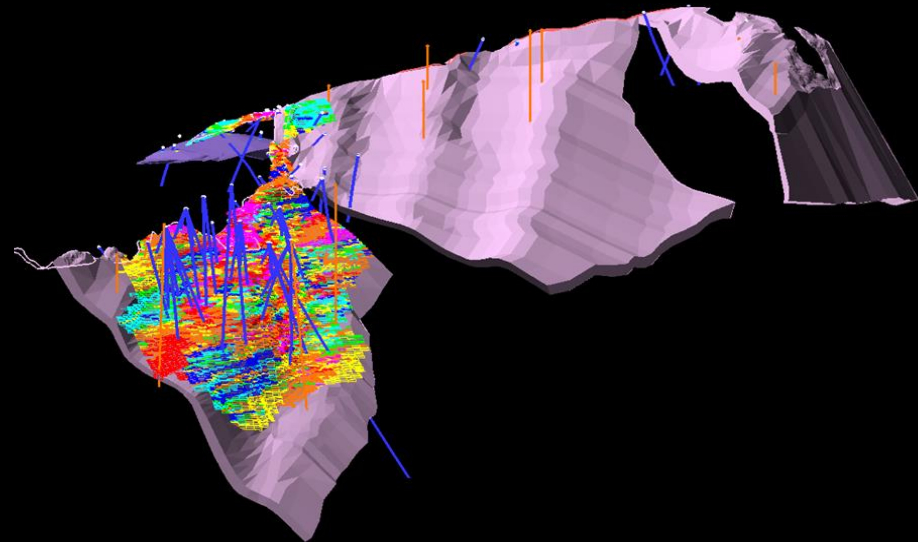
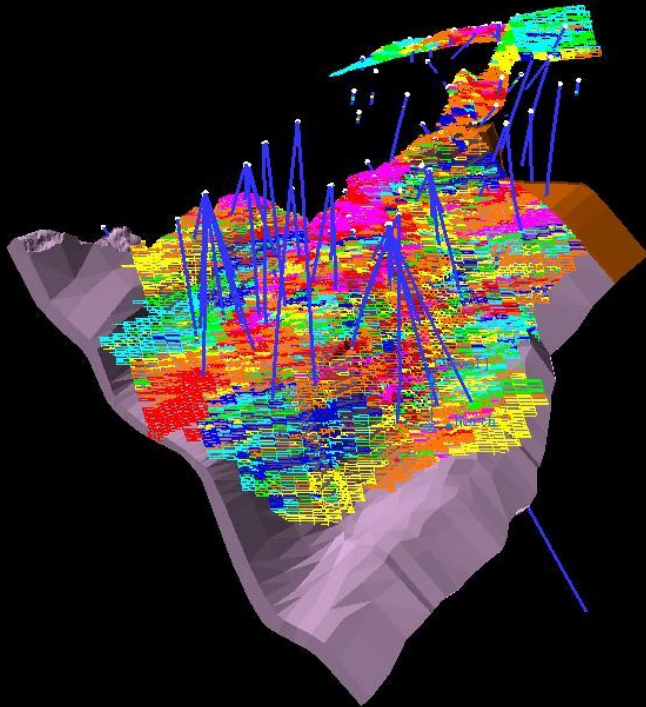
MOD CONCLUSIONS : Kalahari Copper Belt – large, underexplored Copper Province.



- Cupric Canyon's Zone 5 confirms potential for significant new higher grade deposits in KCB
- MOD Targets: structurally related high grade Cu/Ag & intrusive related PGM/Cu
- Exploration Tools: magnetics, structural interpretation, geochemistry & deep drilling

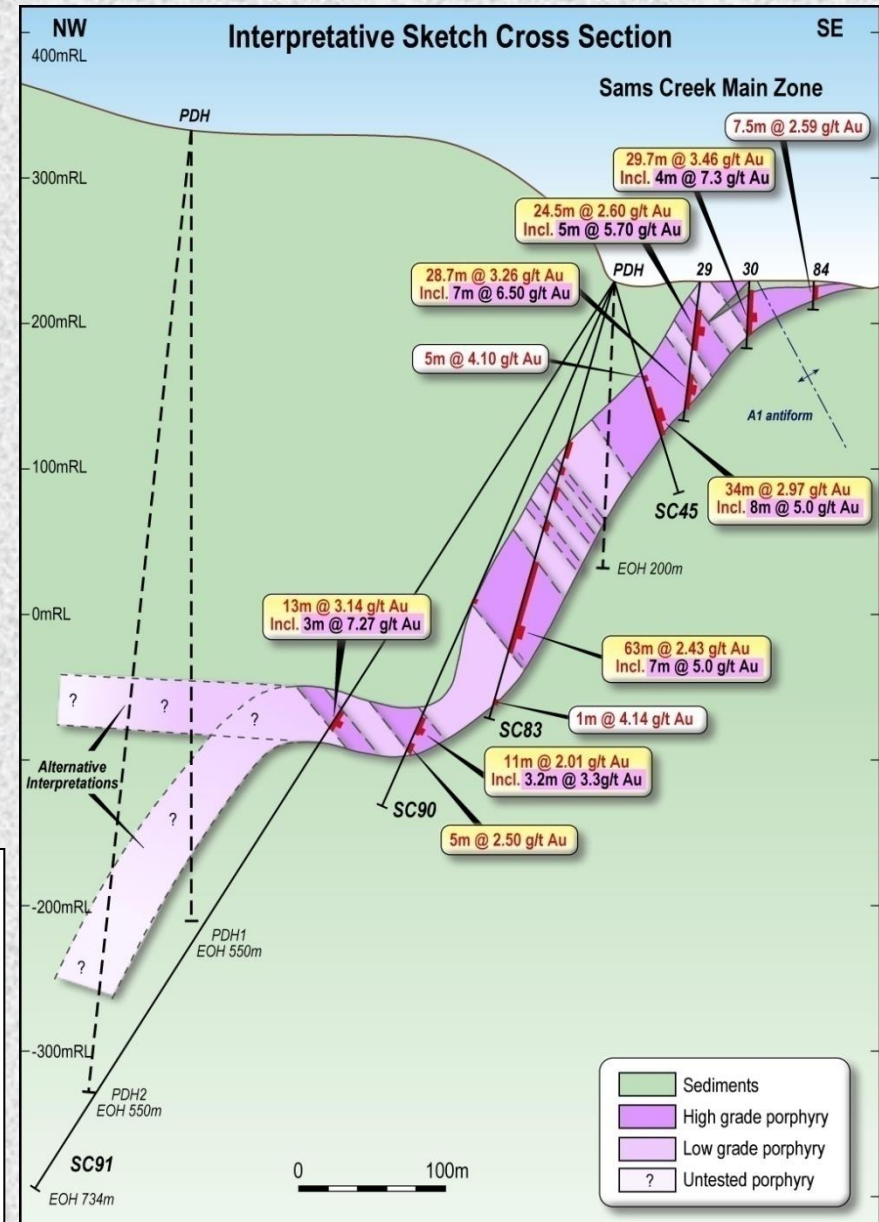
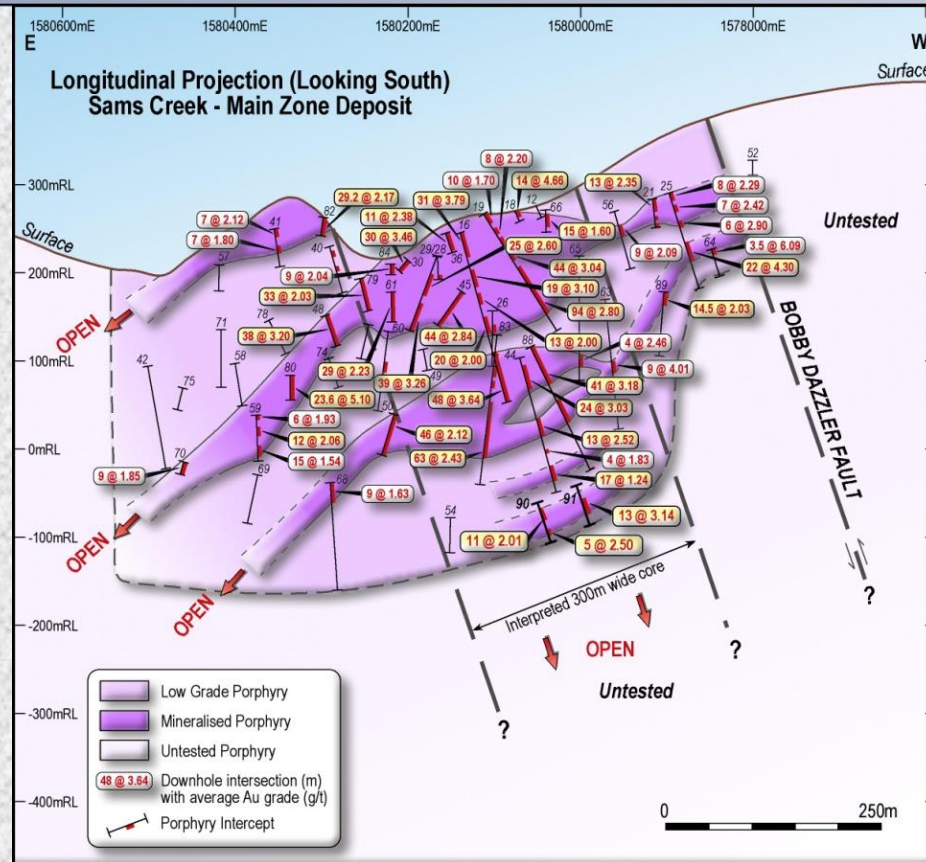
SAMS CREEK GOLD PROJECT – NEW ZEALAND

3D WIRE FRAME MODEL – 1.0Moz Gold in Resources



- 3D Model of porphyry dyke interpreted from outcrop, mapping & sparse drilling outside resource
- High grade gold (>3g/t gold) associated with sulphide veins along anticline fold axes of porphyry

CURRENT RESOURCE AREA



• Main Zone Intersections (down hole widths) :

94m @ 2.8g/t, 20m @ 6.0g/t, 30m @ 3.5g/t,
48m @ 3.6g/t, 24m @ 5.1g/t, 41m @ 3.2g/t,
16.2m @ 5.2g/t, 63m @ 2.4g/t, 44m @ 2.8g/t

- High grade (>5g/t Au) within lower grade porphyry
- Main Zone completely open at depth, along strike

NEW ZEALAND - PORPHYRY HOSTED GOLD



Sams Creek Gold Project - Porphyry drill core in photo averages 4.1g/t gold

- Gold hosted in a wide (<35m), strongly altered porphyry dyke. Multiple sulphide veins
- Excellent results from initial test work using conventional sulphide flotation (90%)
- Globally, porphyry intrusions can host multi million oz gold deposits. Significant upside.



COMPETENT PERSONS' STATEMENT

Competent Persons' Statement

The information in this presentation that relates to Geological Data and Exploration Results at the Botswana Copper Project is reviewed and approved by Jacques Janse van Rensburg, BSc (Hons), General Manager Exploration (Africa) for MOD Resources Ltd. He is registered as a Professional Natural Scientist with the South African Council for Natural Scientific Professions (SACNASP) No. 400101/05 and has reviewed the technical information in this report. Mr Janse van Rensburg has sufficient experience which is relevant to the style of mineralisation and type of deposit under consideration and the activity which it is undertaking to qualify as a Competent Person as defined in the 2012 Edition of the Australasian Code for Reporting Exploration Results, Mineral Resources and Ore Reserves. Mr Janse van Rensburg consents to the inclusion in this presentation of the matters based on information in the form and context in which it appears.

Information in this presentation relates to previously released exploration data disclosed under the JORC Code 2004. It has not been updated to comply with the JORC Code 2012 on the basis that the information has not materially changed since it was last reported and is based on and fairly represents information reviewed and approved by Jacques Janse van Rensburg, BSc (Hons), General Manager Exploration (Africa) for MOD Resources Ltd.

He is registered as a Professional Natural Scientist with the South African Council for Natural Scientific Professions (SACNASP) No. 400101/05 and has reviewed the technical information in this report. Mr Janse van Rensburg has sufficient experience which is relevant to the style of mineralisation and type of deposit under consideration and the activity which it is undertaking to qualify as a Competent Person as defined in the 2012 Edition of the Australasian Code for Reporting Exploration Results, Mineral Resources and Ore Reserves. Mr Janse van Rensburg consents to the inclusion in this presentation of the matters based on information in the form and context in which it appears.

The information in this presentation that relates to Geological Data and Exploration Results at the Sams Creek Gold Project is based on and fairly represents information compiled by Mr Paul Angus, Project Manager of Sams Creek and a Director of MOD Resources Ltd's subsidiary, Sams Creek Gold Ltd. Mr Angus is a member of the Australasian Institute of Mining and Metallurgy and has sufficient experience which is relevant to the style of mineralisation and type of deposit under consideration to qualify as a Competent Person as defined in the 2012 Edition of the Australasian Code for Reporting of Exploration Results, Mineral Resources and Ore Reserves. Mr Angus consents to the inclusion in this presentation of the matters based on information in the form and context in which it appears.

Information in this presentation relates to previously released exploration data disclosed under the JORC Code 2004. It has not been updated to comply with the JORC Code 2012 on the basis that the information has not materially changed since it was last reported and is based on and fairly represents information compiled by Mr Paul Angus.

DISCLAIMER AND FORWARD LOOKING STATEMENTS

Forward Looking Statements

This presentation has been prepared by MOD Resources Limited. The document contains background Information about MOD Resources Limited current at the date of this presentation. The presentation is in summary form and does not purport to be all inclusive or complete. Recipients should conduct their own investigations and perform their own analysis in order to satisfy themselves as to the accuracy and completeness of the information, statements and opinions contained in this presentation.

The presentation is for information purposes only. Neither this presentation nor the information contained in it constitutes an offer, invitation, solicitation or recommendation in relation to the purchase or sale of shares in any jurisdiction. The presentation may not be distributed in any jurisdiction except in accordance with the legal requirements applicable in such jurisdiction. Recipients should inform themselves of the restrictions that apply to their own jurisdiction as a failure to do so may result in a violation of securities laws in such jurisdiction.

This presentation does not constitute investment advice and has been prepared without taking into account the recipient's investment objectives, financial circumstances or particular needs and the opinions and recommendations in this presentation are not intended to represent recommendations of particular investments to particular persons. Recipients should seek professional advice when deciding if an investment is appropriate. All securities transactions involve risks, which include (among others) the risk of adverse or unanticipated market, financial or political developments.

To the fullest extent of the law, MOD Resources Limited, its officers, employees, agents and advisers do not make any representation or warranty, express or implied, as to the currency, accuracy, reliability or completeness of any information, statements, opinion, estimates, forecasts or other representations contained in this presentation. No responsibility for any errors or omissions from the presentation arising out of negligence or otherwise is accepted.

This presentation may include forward-looking statements that are only predictions and are subject to risks, uncertainties and assumptions which are outside the control of MOD Resources Limited. Actual values, results or events may be materially different to those expressed or implied in this presentation. Given these uncertainties, recipients are cautioned not to place reliance on forward-looking statements in the presentation as they speak only at the date of issue of this presentation. Subject to any continuing obligations under applicable law and ASX Listing Rules, MOD Resources Limited does not undertake any obligation to update or revise any information or any of the forward-looking statements in this presentation or any changes in events, conditions or circumstances on which any such forward-looking statement is based.