



ASX Code: SEG

28 August 2014

Market Announcements Platform  
ASX Limited  
Exchange Centre,  
20 Bridge Street  
Sydney NSW 2000

## PLUMRIDGE NICKEL PROJECT – EXPLORATION UPDATE

### HIGHLIGHTS:

- Maiden aircore drilling program (48 holes for 2,162 metres) has now been completed over 7 target zones. Geological data is being collated and interpreted with assay results pending
- A detailed airborne magnetic survey has now been completed over E39/1731 and is being processed and interrogated. The data will be used to enhance the targeting process across this prospective area, including the E21 Target
- Moving Loop Electromagnetic data collection has continued at the E28 Target located immediately south east of the E21 Target. The survey is expected to be complete by mid-September
- Planning and permitting for an initial phase of reverse circulation and diamond drilling at the E21 Target to test four high priority EM conductors (C1-4) is well progressed. Drill rigs are expected to mobilise before the end of September

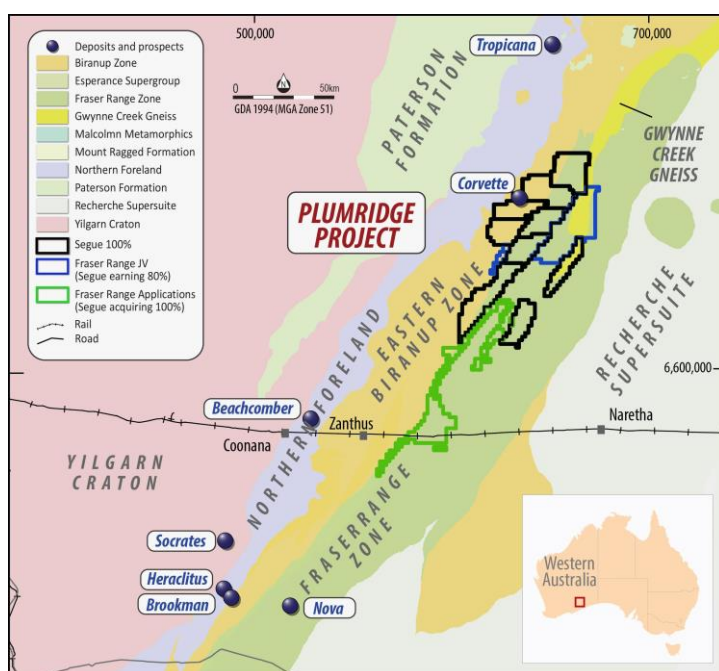


Figure 1 – Plumridge Nickel Project Tenement Map

### Key Facts:

#### Segue Resources Limited

ASX Code:	SEG
Share price (27/8/14):	1.5¢
52 week range:	0.2¢-1.8¢
Shares on issue:	1,994m
Market cap.:	\$29.9m

#### Plumridge Nickel Project

Location:	Fraser Range, WA
Primary commodity:	Nickel-copper
Tenement holding	
- 100% interest	2,466km <sup>2</sup>
- 80% interest <sup>1</sup>	641km <sup>2</sup>
Total:	3,013km <sup>2</sup>

1. Segue 80%, Fraser Range Metals Group 20%

Segue Resources Limited (**Segue** or the **Company**) is pleased to provide an update on the progress being made with the major exploration initiative for mafic-ultramafic hosted nickel-copper sulphide deposits at the Plumridge Nickel Project in the Fraser Range Province of Western Australia.

As previously reported (ASX Announcement 14 August, 2014) Segue has commenced a major exploration initiative involving the collection of quality geological, geochemical and geophysical datasets. Exploration programs include collection of detailed airborne magnetic data, reconnaissance aircore drilling, orientation geochemical surveys, Moving Loop Electromagnetic (**MLEM**) surveys and reverse circulation (**RC**) and diamond drilling.

These programs provide an immediate test of recently generated targets whilst continuing exploration across the wider project area that are expected to generate the next series of exploration targets.

### AIRCORE DRILLING

A 48 hole (2,162 metres) aircore drilling program has now been completed over seven (7) targets at the Plumridge Nickel Project. The objective of the drilling was to collect geological and lithogeochemical data to provide an initial test of the target zones that had been identified in airborne magnetic and MLEM data. The results have also provided critical data on the depth and nature of the younger sedimentary cover.

The drilling penetrated the transported cover sequence and into the bedrock to provide a clear indication of the rock types. The bedrock samples are being assayed initially by XRF and then submitted to the laboratory for final assay. Results will be fully reported on receipt of the laboratory results.

### BEDROCK CONDUCTOR DRILLING

Segue has submitted a Program of Work (**POW**) to the Department of Mines and Petroleum for RC and diamond drilling of the high priority EM conductors, C1-4, at the E21 Target (**Figures 2a & 2b**). The POW is expected to be approved by mid-September with drilling to commence immediately thereafter.

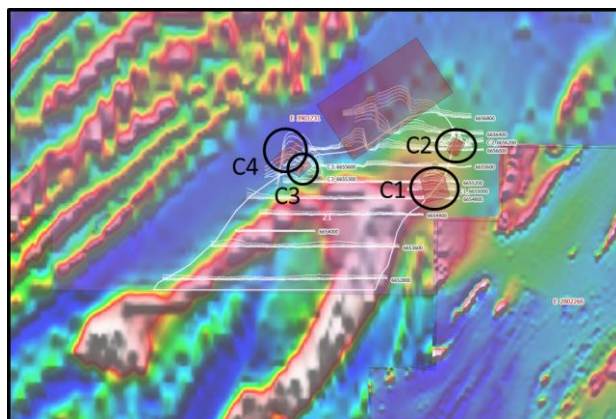


Figure 2a – Bedrock Conductors at E21 Target

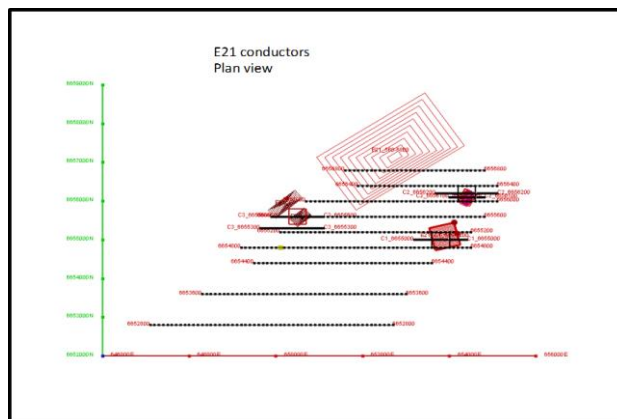


Figure 2b – Modelled Conductors

### AIRBORNE MAGNETIC SURVEY

A 7,080 line kilometre detailed airborne magnetic survey has now been completed over E39/1731. This 100 metre line spaced survey supercedes the existing regional data and will now be processed and merged with the wider detailed magnetic data set.

The survey data will produce a high quality proprietary data set that will have a major impact on the interpretation of the E21 Target and the remainder of the large tenement area (approximately 600km<sup>2</sup>). The survey will be fully processed and the interpreted results are expected by the end of September 2014.

### MOVING LOOP ELECTROMAGNETIC SURVEYS (MLEM)

The E28 Target (tenement E28/2266) is located to the immediate south east of the E21 Target and is covering a newly identified prospective magnetic feature. The survey is currently 50% complete with 187 stations completed over 17.7 line kilometres (**Figures 3a & 3b**). The survey is scheduled for completion by mid-September.

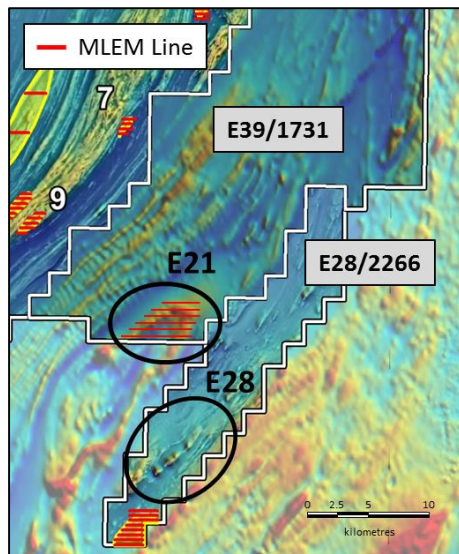


Figure 3a – E28 Target

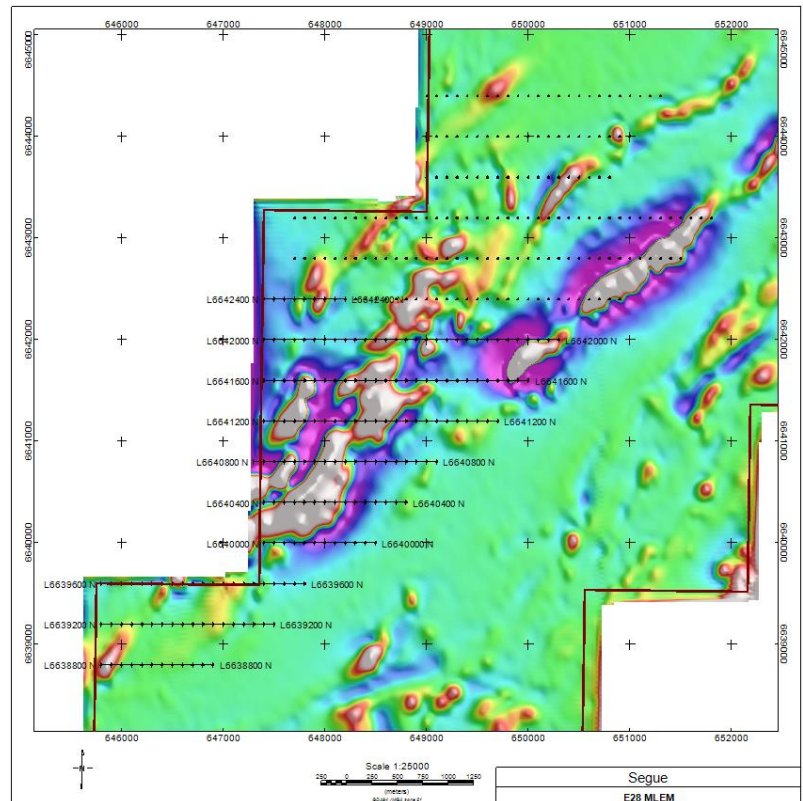


Figure 3b – E28 Target MLEM Survey Coverage

For further information visit [www.segueresources.com](http://www.segueresources.com) or contact:

#### Segue Resources Limited

Mr Steven Michael

Managing Director

T: +61 8 9486 4699

E: [info@segueresources.com](mailto:info@segueresources.com)

#### Competent Persons Statement

The information in this report that relates to Exploration Results is based on information compiled by Mr Peter Langworthy who is a Member of The Australian Institute of Geoscientists. Mr Langworthy has more than five years' experience which is relevant to the style of mineralisation and type of deposit under consideration and to the activity which he is undertaking to qualify as a Competent Person as defined in the 2012 Edition of the "Australasian Code for Reporting of Exploration Results, Minerals Resources and Ore Reserves". Mr Langworthy consents to the inclusion in the report of the matters based on his information in the form and context in which it appears