



FOCUS ON EXPLORATION COPPER AND GOLD ACTIVELY EXPLORING

RIU Melbourne Presentation • September 2014
Managing Director • Peter Schwann



Disclaimer and Competent Person's statement

Forward Looking Statements Caution

Certain statements contained in this document constitute forward looking statements. Such forward-looking statements are based on a number of estimates and assumptions made by the Company and its consultants in light of experience, current conditions and expectations of future developments which the Company believes are appropriate in the current circumstances. These estimates and assumptions while considered reasonable by the Company are subject to known and unknown risks, uncertainties and other factors which may cause the actual results, achievements and performance of the Company to be materially different from the future results and achievements expressed or implied by such forward-looking statements. Investors are cautioned that forward looking information is no guarantee of future performance and accordingly, investors are cautioned not to place undue reliance on these forward-looking statements.

Competent Person Statement

Information in this announcement that relates to Mineral Resource and exploration results is based on information compiled by Mr Peter Schwann who is the Managing Director of Aruma Resources Limited. Mr Schwann is a Chartered Professional (Geology) and Fellow of the Australasian Institute of Mining and Metallurgy and has sufficient experience which is relevant to the style of mineralisation and type of deposit under consideration and to the activity which they are undertaking, to qualify as Competent Person as defined in the 2012 Edition of the "Australasian Code for Reporting of Exploration Results, Mineral Resources and Ore Reserves". Mr Schwann consents to the inclusion in the document of the information in the form and context in which it appears. All exploration results reported have previously been released to ASX and are available to be viewed on the Company website www.arumaresources.com.au. The Company confirms it is not aware of any new information that materially affects the information included in the original announcement. The Company confirms that the form and context in which the Competent Person's findings are present have not been materially modified from the original announcements.



Why is this presentation important?

Aruma is exploring a copper project

- WA's LARGEST COPPER CAMP (2200km²)
- OVER 300 km OF MINERALISED STRUCTURES
- TWO DEFINED CORRIDORS
- DRILLED MINERALISATION FIRST UP
- 6 FIRST TIER GOSSAN TARGETS READY TO DRILL
- HyMap SURVEY UNDERWAY TO 2800km²

WE STILL HAVE \$2M CASH AS OF TODAY

Aruma is still drilling gold projects!



The key Projects

Bulloo Downs Project - Copper

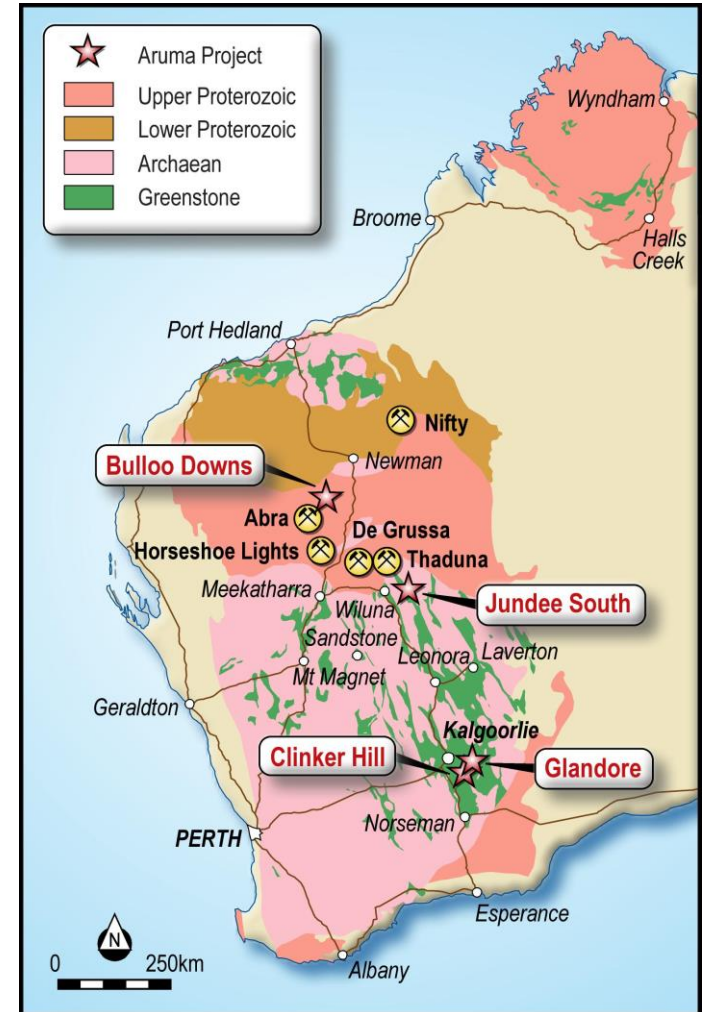
- 100km south of Newman
- WA's best Copper district

Glandore Project - Gold

- 40km east of Kalgoorlie
- No native title claim

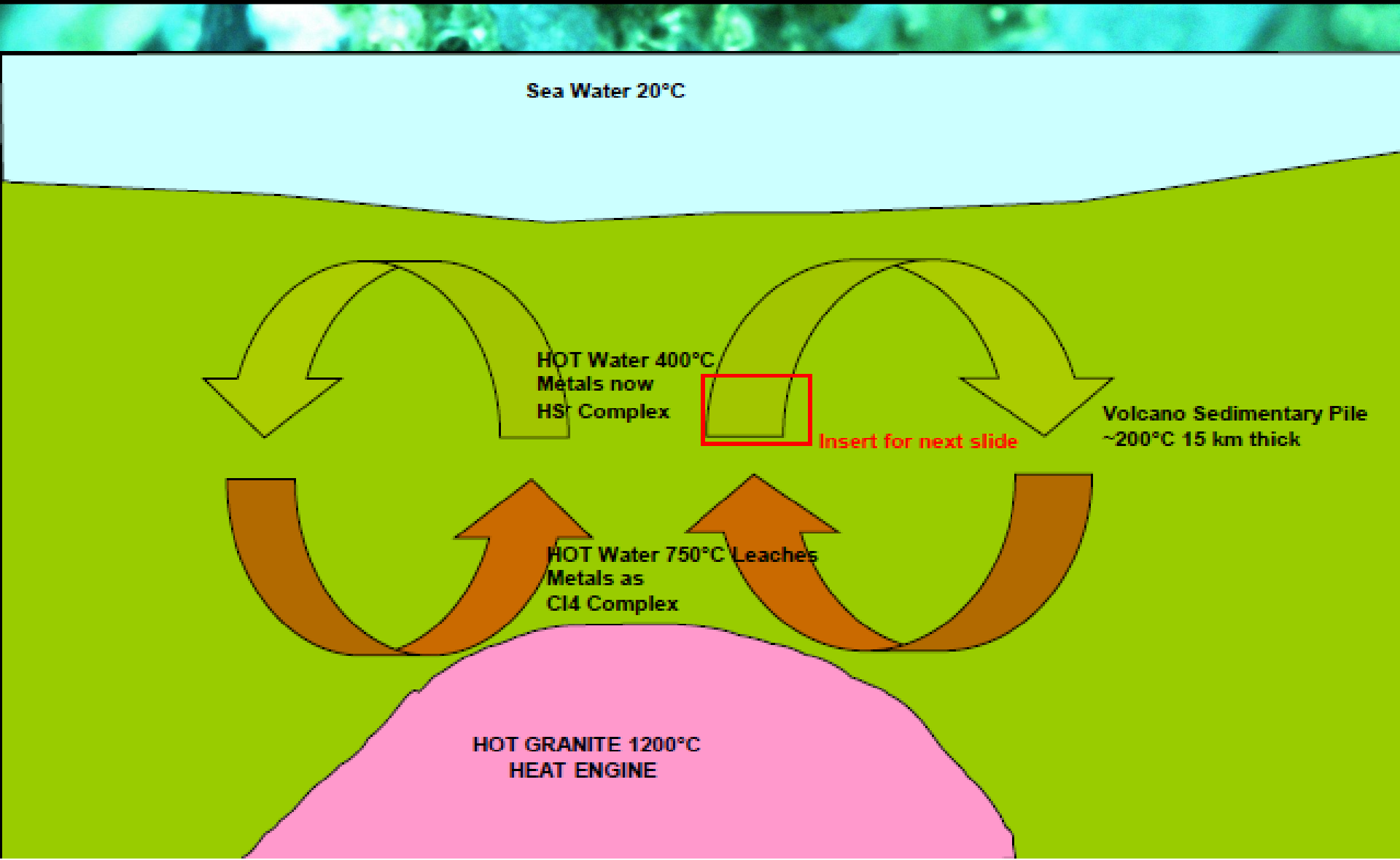
Jundee South Project - Gold

- New interest at Jundee



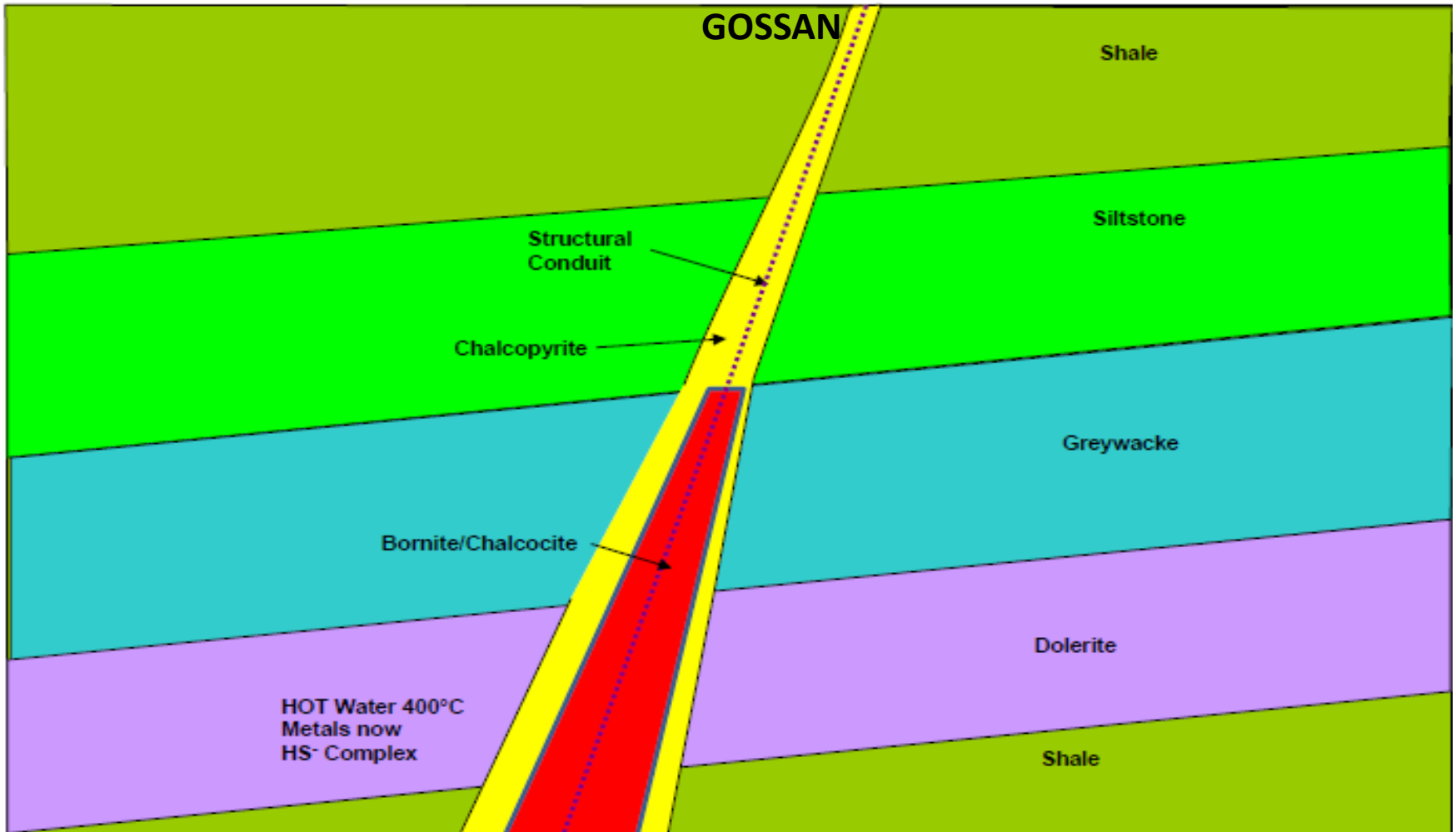


Aruma's Model for Metals





The Copper Structure





Why Copper in the Ashburton?

A GREAT ADDRESS

- EMERGING COPPER PROVINCE
- Over 2Mt of metal resources
- Hosts De Grussa, Nifty, Telfer, Yuneena, Thaduna and Horseshoe
- HIGH GRADE – 1.5 to 5% Cu
- CRUSTAL STRUCTURES HOST DEPOSITS
- GOOD HERITAGE OUTCOMES POSSIBLE

A GREAT COMMODITY

- COPPER IS REQUIRED FOR INFRASTRUCTURE
- DEMAND PREDICTED TO INCREASE
- COPPER IS A HIGH MARGIN METAL



Why Copper at Bulloo Downs?

A GREAT LOCATION

- IT OUTCROPS
- LARGE POWERFUL STRUCTURES
- STRONG COPPER ANOMALIES
- GOLD AND SILVER CREDITS
- UNDEREXPLORED OR IGNORED
- CLOSE TO INFRASTRUCTURE
- FRIENDLY PASTORALIST

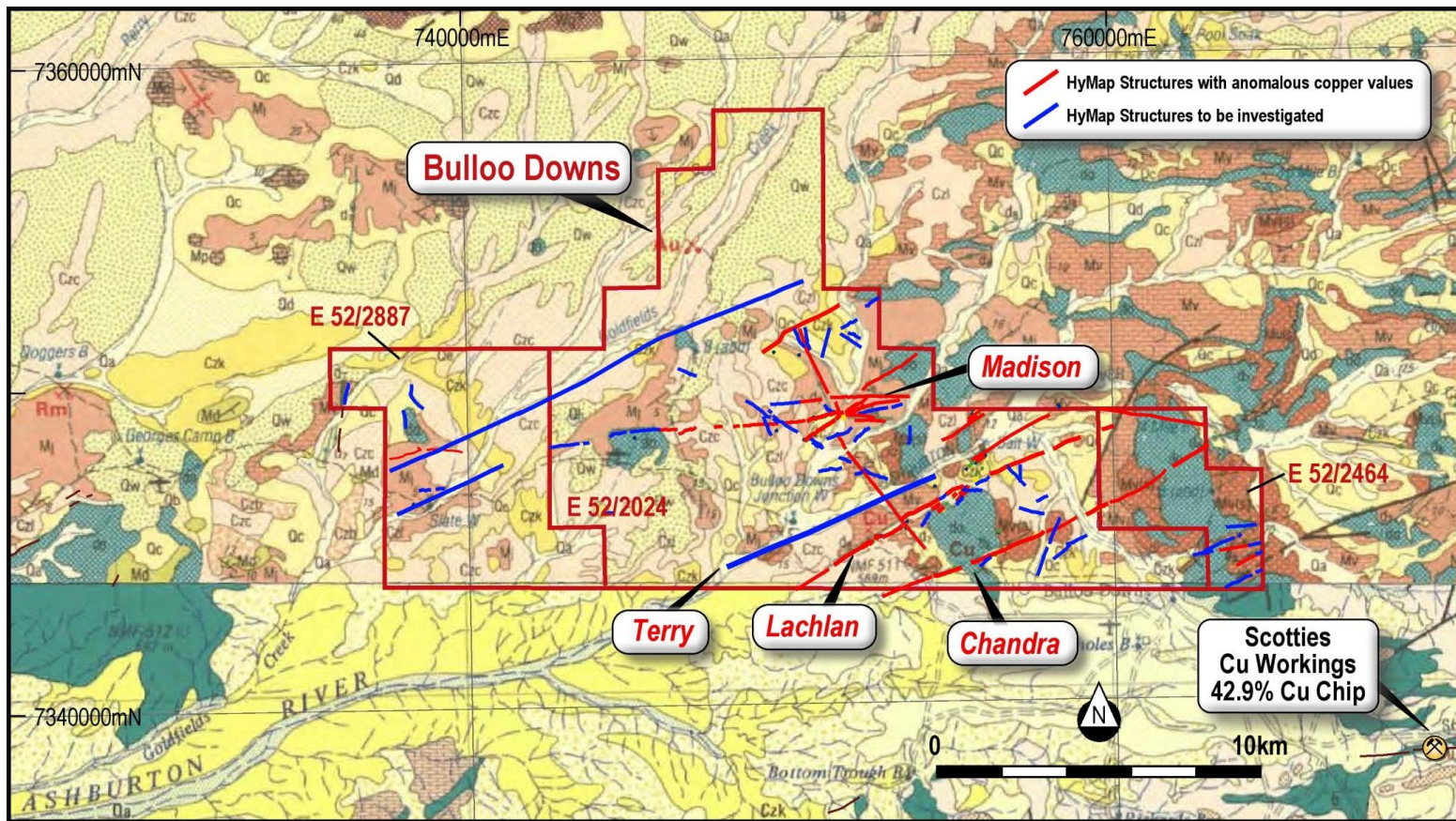
A GREAT PROJECT

- LOW ENTRY COST
- SPEND \$1.1M- 3yr FOR 90%
- GOOD EXPLORATION RESPONSE
- HYMAP RESPONSIVE
- SUCCESS IN GEOCHEMISTRY AND DRILLING
- A GOOD LAND PACKAGE
- CONTROL OF EXTENSIONS



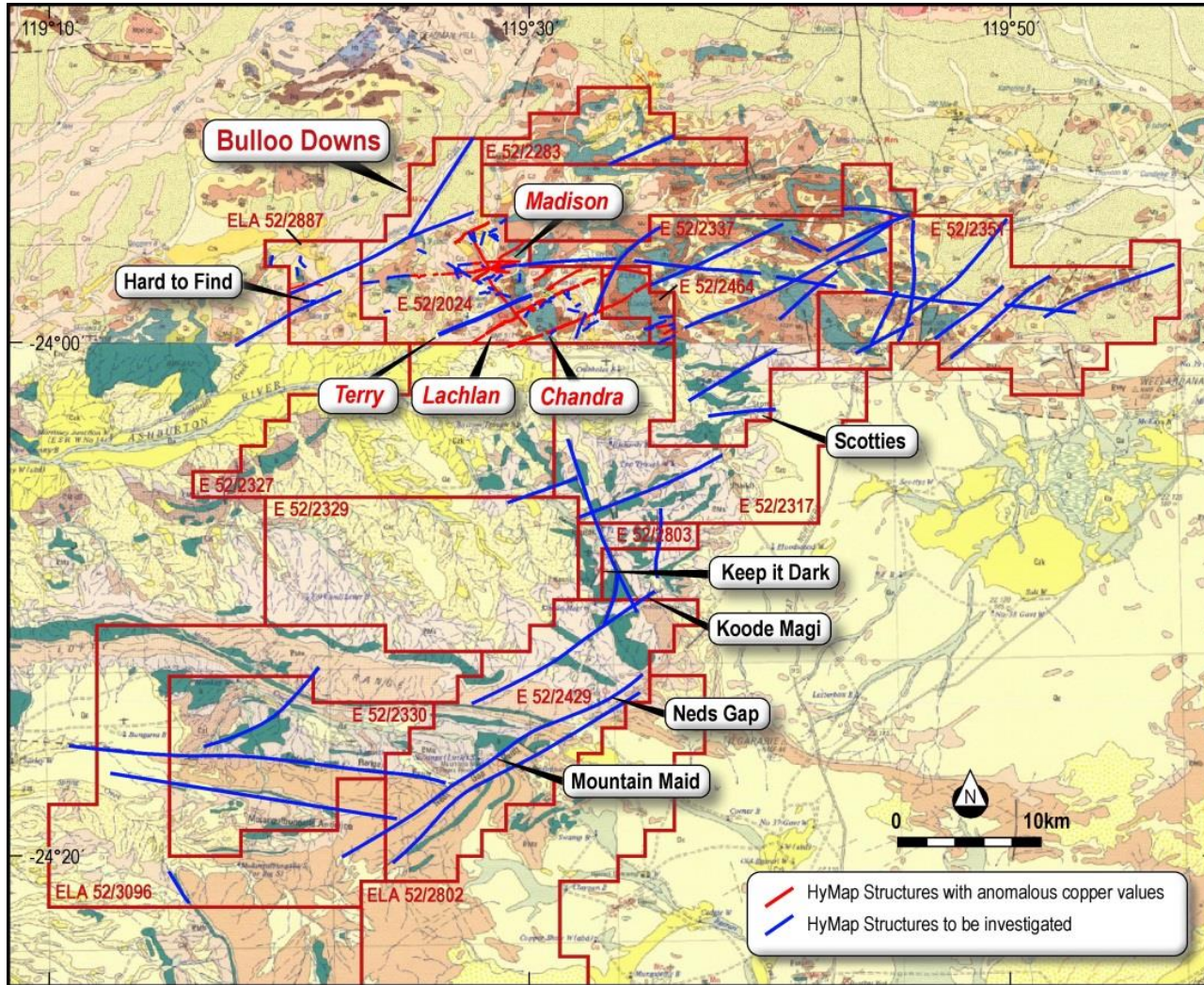
Bulloo Downs Project - Initial area

An exciting 218km² copper project





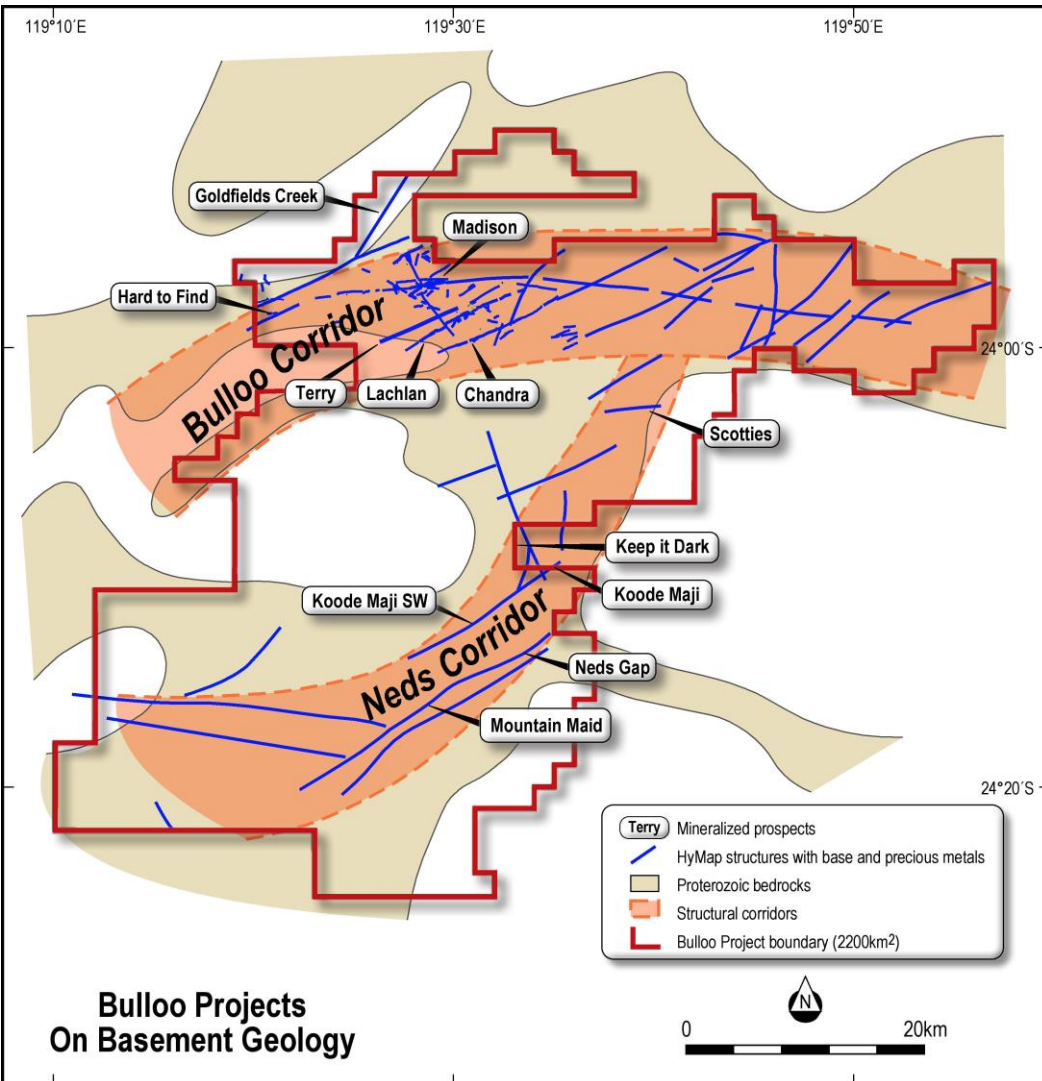
Bulloo Downs Project - Stage 2 area



A more exciting 2200km² copper project



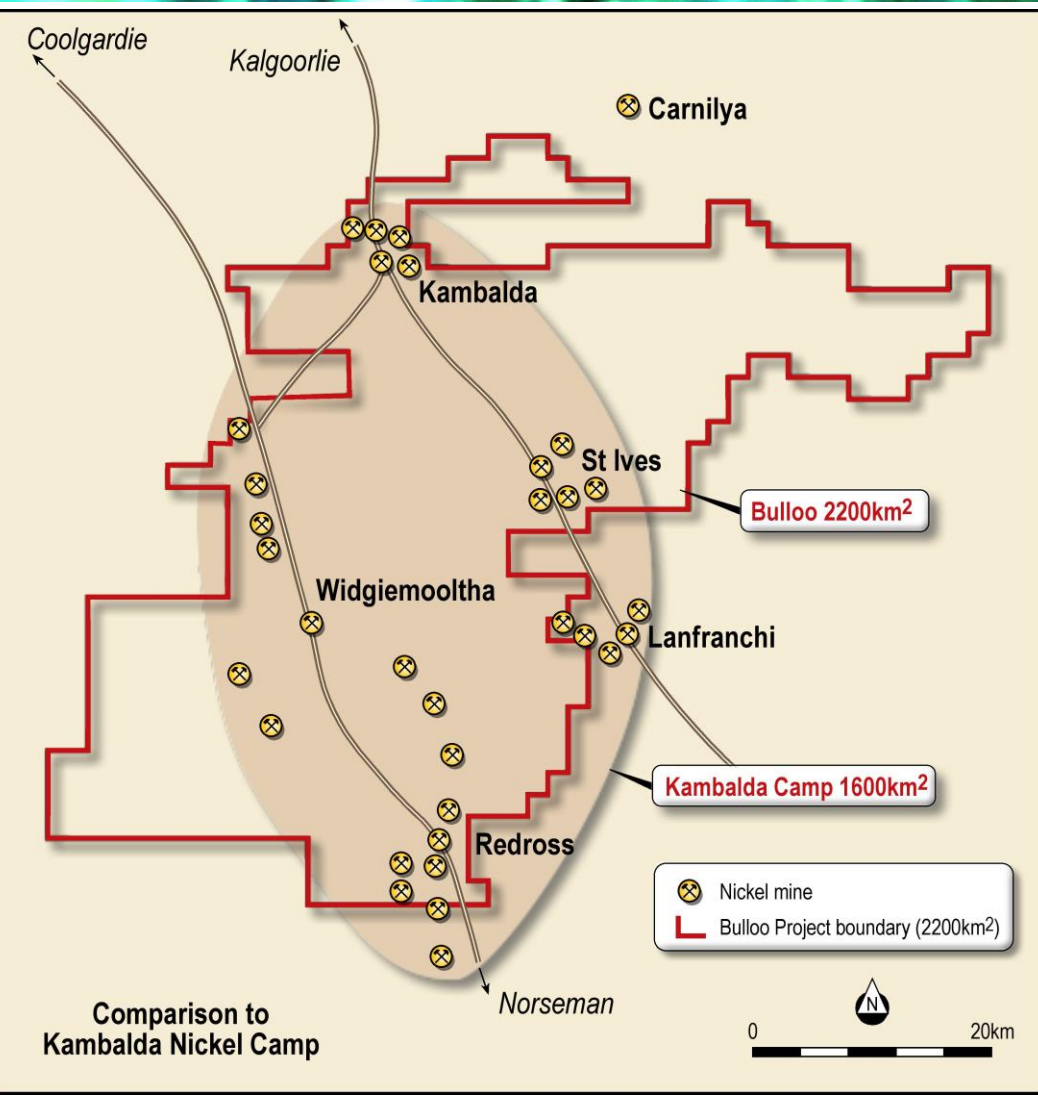
Mineralised Corridors



Two corridors on a
2200km² copper
camp



How Big Is Bulloo Downs Copper?



Kambalda
Widgiemooltha
nickel camp is
1600km²

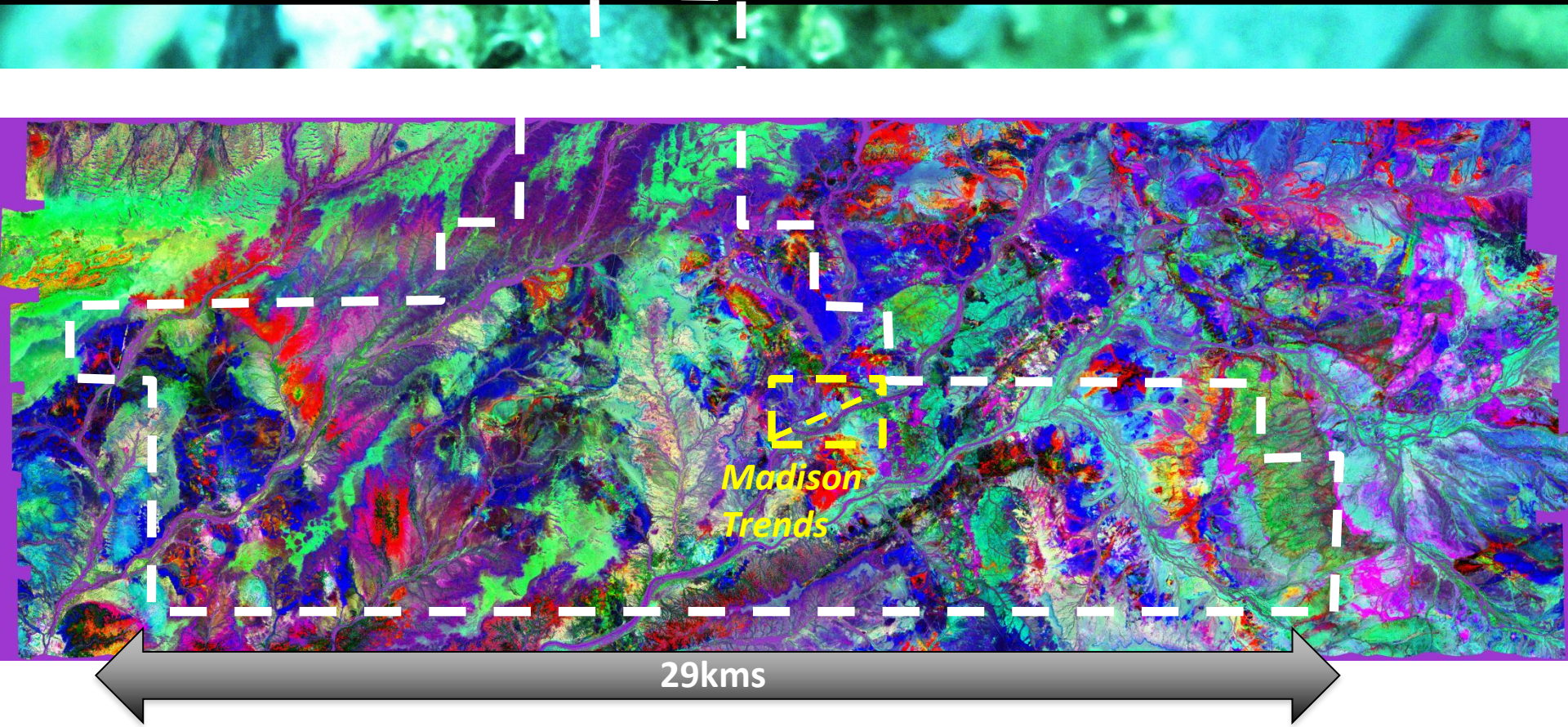


Bulloo Downs Project progress

- A **new** copper camp secured over 2200km²
- Rock Chips up to **37.9% Cu** (Lachlan) and **42.9% Cu** (Scotties)
- **4m at 2.2% Cu** from 51m in first pass drilling program (Madison)
- **8 of 14** holes hit mineralisation (every line)
- **HyMap** alteration **over 300km** in multiple zones
- **Hydrothermal** alteration and mineralisation
- **Similarities to Thaduna - Green Dragon:**
- In reactive sediments over a hot granitic basement on deep structures



HyMap image of Bulloo Copper Project

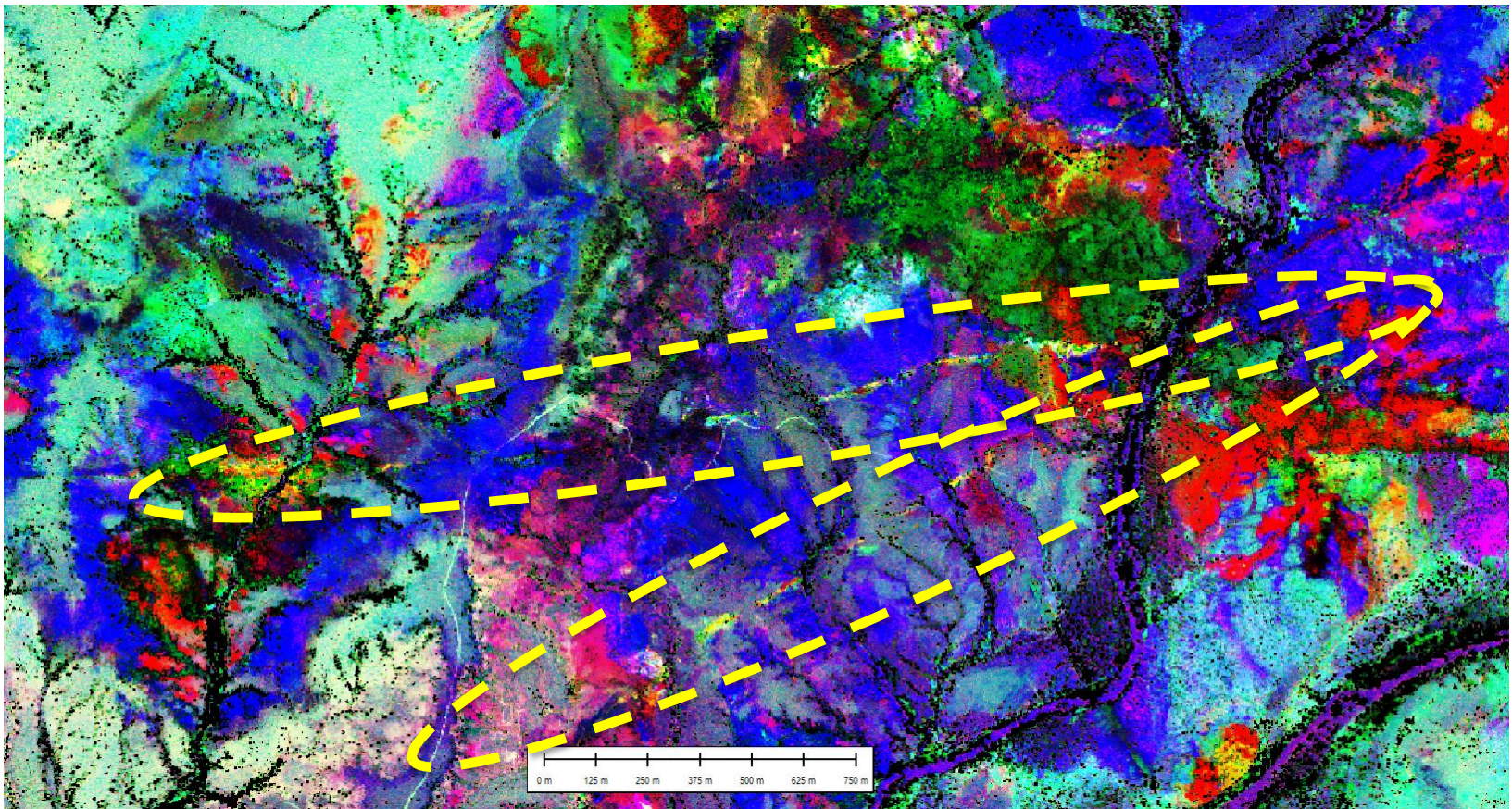


- HyMap gives Structure ✓
- Sampling gives high Copper ✓
- First drilling hits 4m @ 2.2% Cu ✓



HyMap image of Madison

Madison Trends – Bulloo Copper Project





Gossan - Madison East

6-42% Copper in surface gossan





Large Gossan Dimensions

Location	Lease	Length m	Width m	Cu %	Au ppm	Pb %
Scotties	E52/2337	100	2	42.93	1.5	0.1
Keep it Dark	E52/2803	100	3	<0.1	<0.1	20.5
Madison	E52/2024	3000	3	42.6	1	<0.1
Chandra	E52/2024	8000	2	7.63	<0.1	<0.1
Terry's	E52/2024	800	2	0.57	<0.1	0.14
Koode Maji SW	E52/2429	900	10	0.24	<0.1	0.14
Koode Maji	E52/2429	100	2	15.9	<0.1	0.11% Zn
Neds Gap	E52/2429	1100	2	16.7	<0.1	0.12
Mountain Maid	E52/2429	600	2	35	<0.1	0.05

Kambalda gossans were bathtub size!



Exploration and Development

- Rock chip and mapping gets **high Cu values (January- March)**
- **4m at 2.2% Cu** in first pass drilling program **(March)**
- All drilllines hit copper anomalism **(March)**
- HyMap alteration over 80km sampled **(May)**
- Heritage survey completed over 15km of anomalies **(May)**
- Additional 1900km² optioned **(June)**
- HyMap booked over surrounding areas **(June)**
- Further mapping and sampling completed **(June)**
- HyMap flown over new 1720km² **(NOW)**
- Follow up drilling planned **(October-November)**



Why is Aruma still after Gold?

- **Gold will break out of Bank Lending Ceiling!**
- **Gold is profitable**
 - Where you have hungry plants
 - Where you can open cut soft ore
 - Where you have high (>3g/t) grade
 - Where you have infrastructure
- **Gold Mining is still a company maker**
 - When you have virgin operations
 - When you have high grade and thick zones
 - When you have 100% ownership



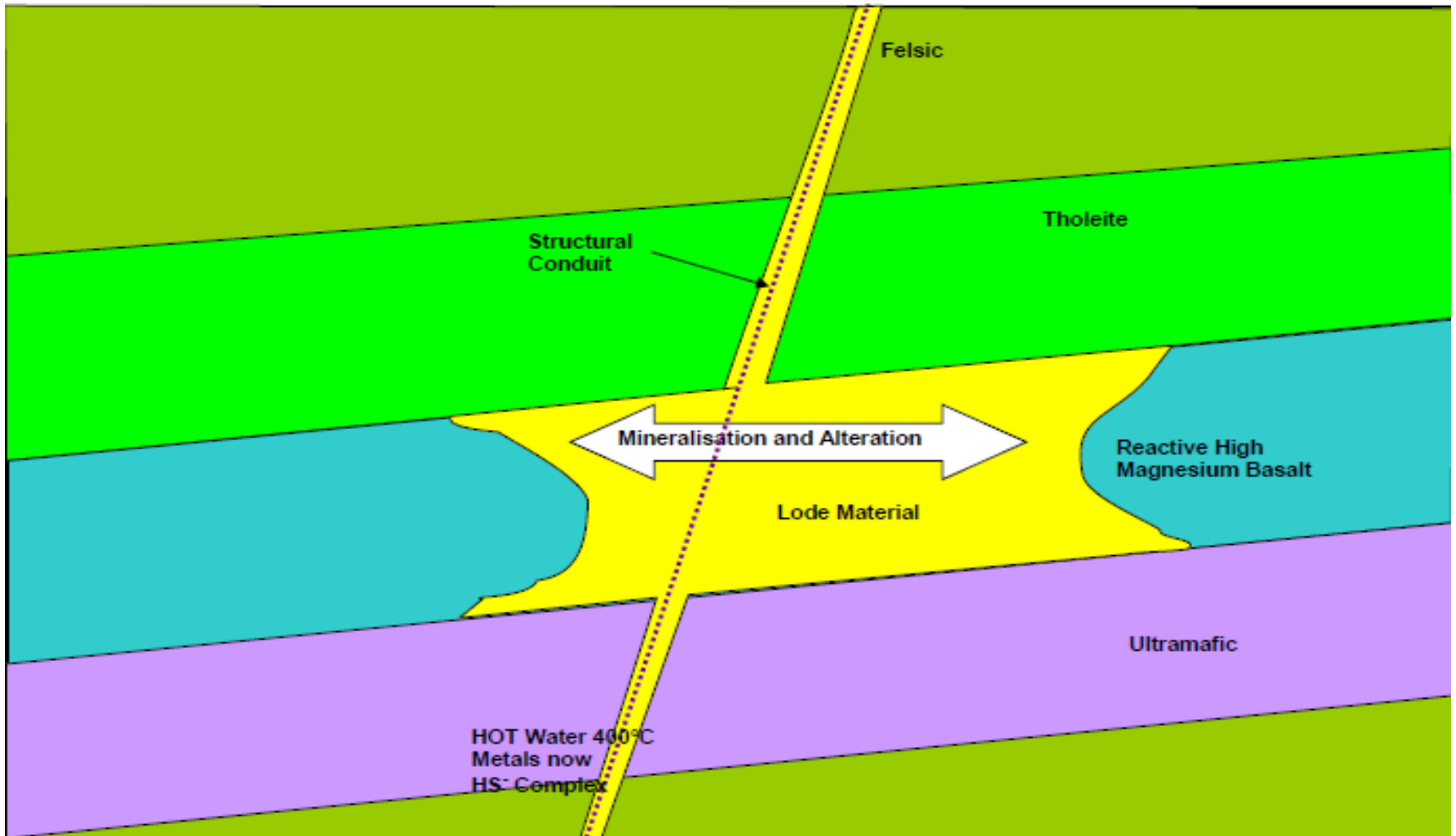
Aruma's Gold Projects

- Kalgoorlie and Wiluna
- Great addresses with:
 - Grade and thickness
 - Virgin projects
 - Proven gold endowment
 - Ready to drill
 - Close to infrastructure





The Gold Structure





Proven Gold Provinces

Grade and thickness = powerful systems

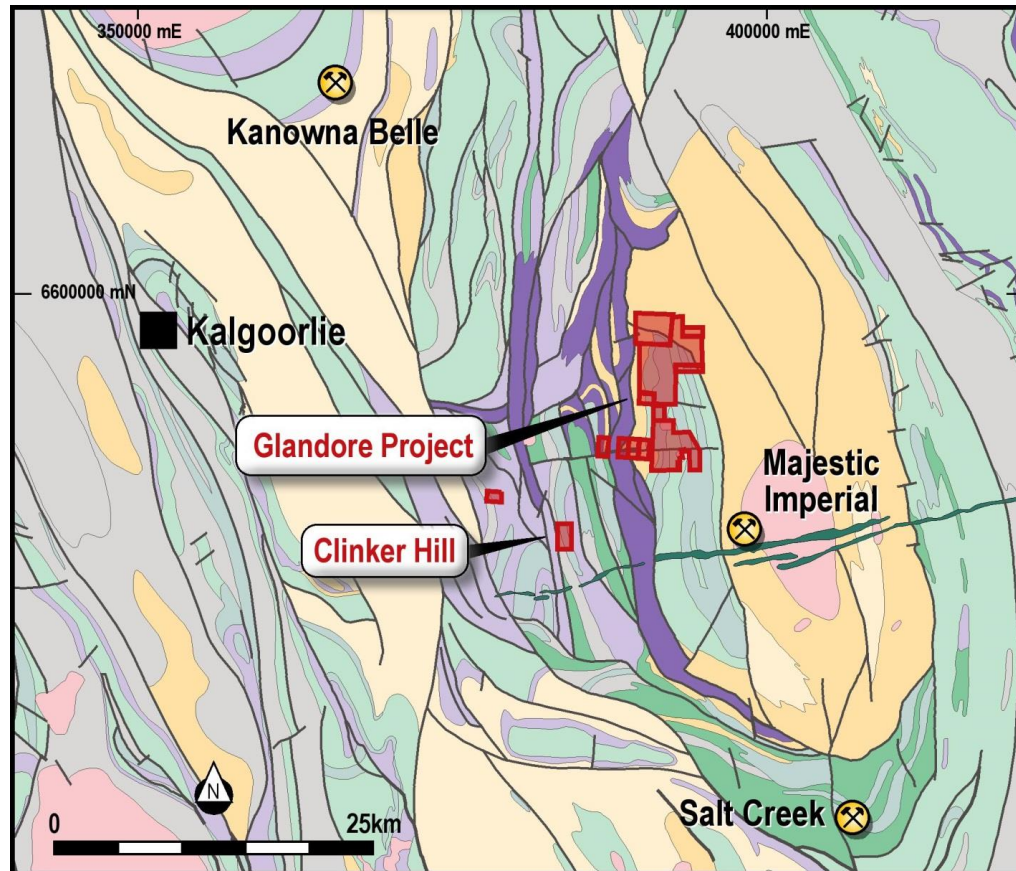
- **Kalgoorlie**
~50M ozs
- **Kanowna Belle**
~6M ozs
- **Salt Creek-Majestic**
~1M ozs
- **Jundee**
~7M ozs

PROJECT	Intersections	Grade	From
GLANDORE	10m	10.27 g/t Au	58m
	8m	10.4 g/t Au	18m
	9m	4.22g/t Au	13m
	5m	4.3g/t Au	60m
JUNDEE	4m	15.37/t Au	7m
	6m	3.44g/t Au	18m
	4m	4.84g/t Au	21m



Glandore Gold Project

40km east of Kalgoorlie by bitumen road

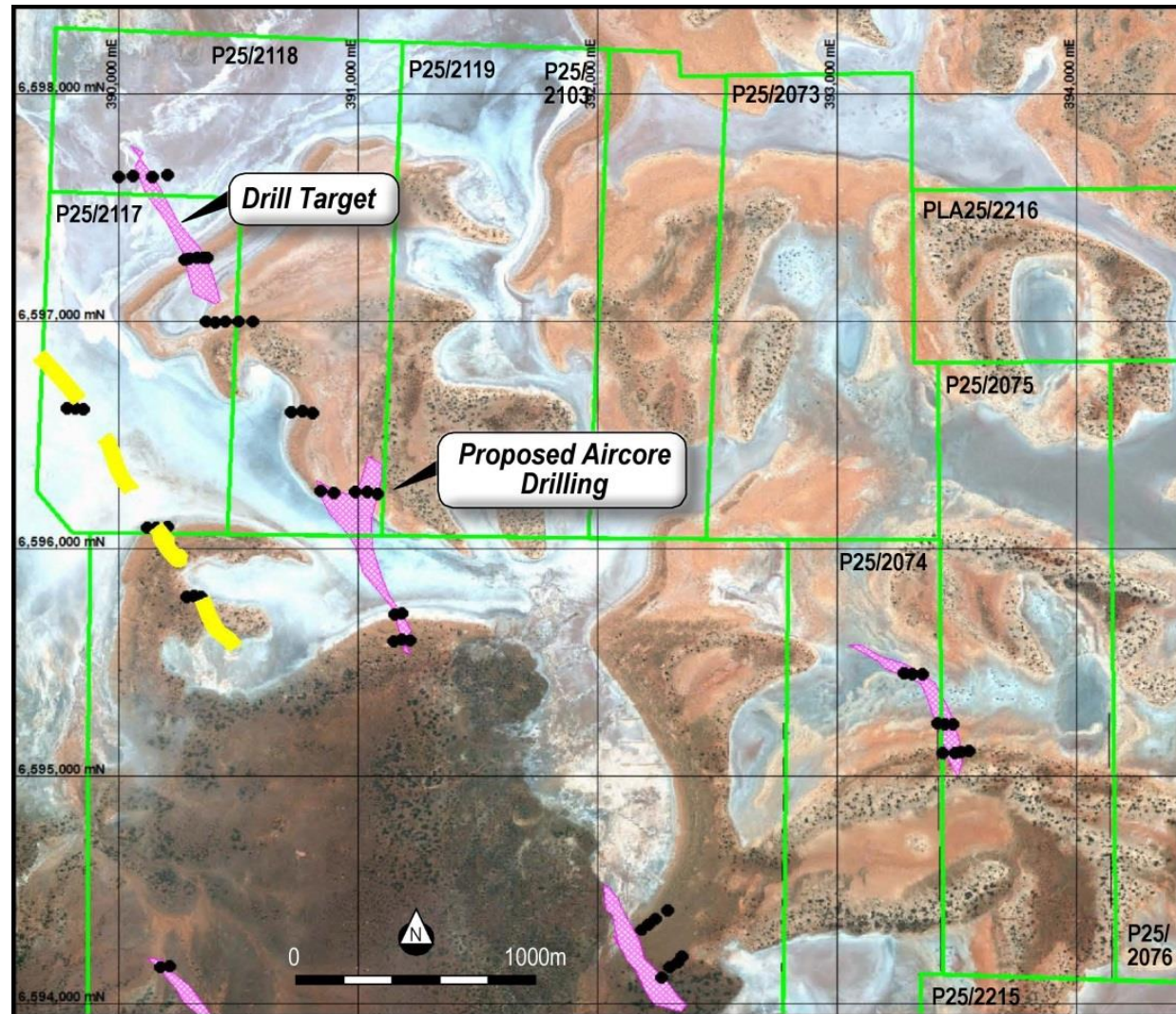




Glandore Gold Drilling Program

STRONG SYSTEMS

- mineralisation in pink >1g/t from previous drilling on Fluid Flow study
- The yellow dashes are the Steves Line trend
- 68 holes drilled
- 2500m Aircore done
- Aircore holes to >60m





Glandore Lake Drilling Program

Lake Drill Rig

- **Aircore**
- **Low Impact**
- **Drills soft material**
- **4000m Aircore done**
- **Aircore holes to >60m**



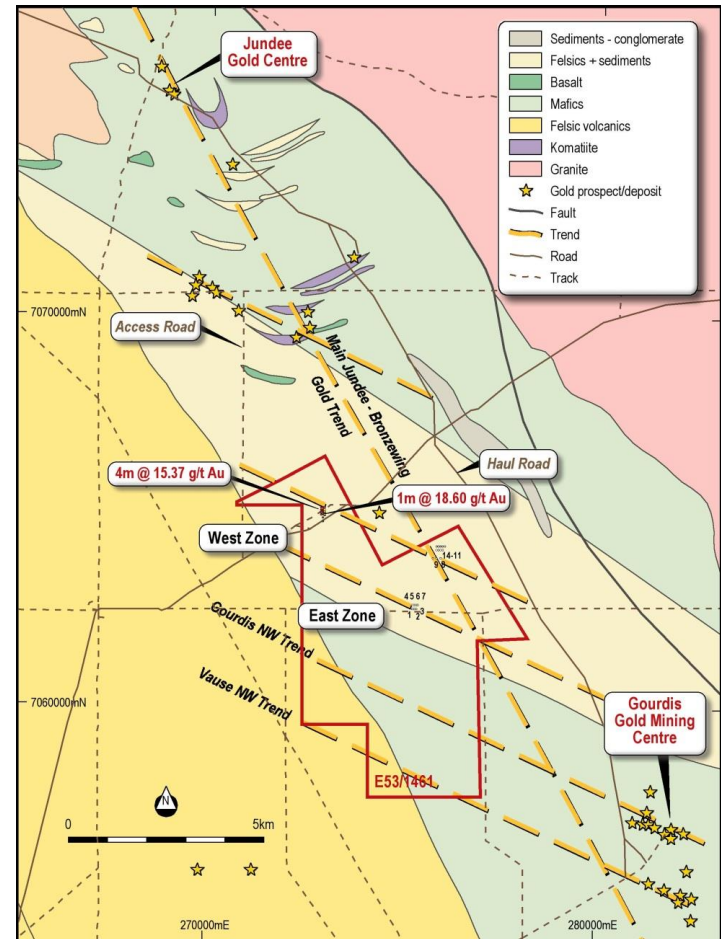


Jundee South Gold – a virgin discovery

- Located 60km from Wiluna
- 2.5km from Jundee haul road
- 25km from Jundee Mine

- 3 major lineaments
- HyMap anomaly on discovery

- RC drilling completed at Marks
- RAB drilling on southern trends





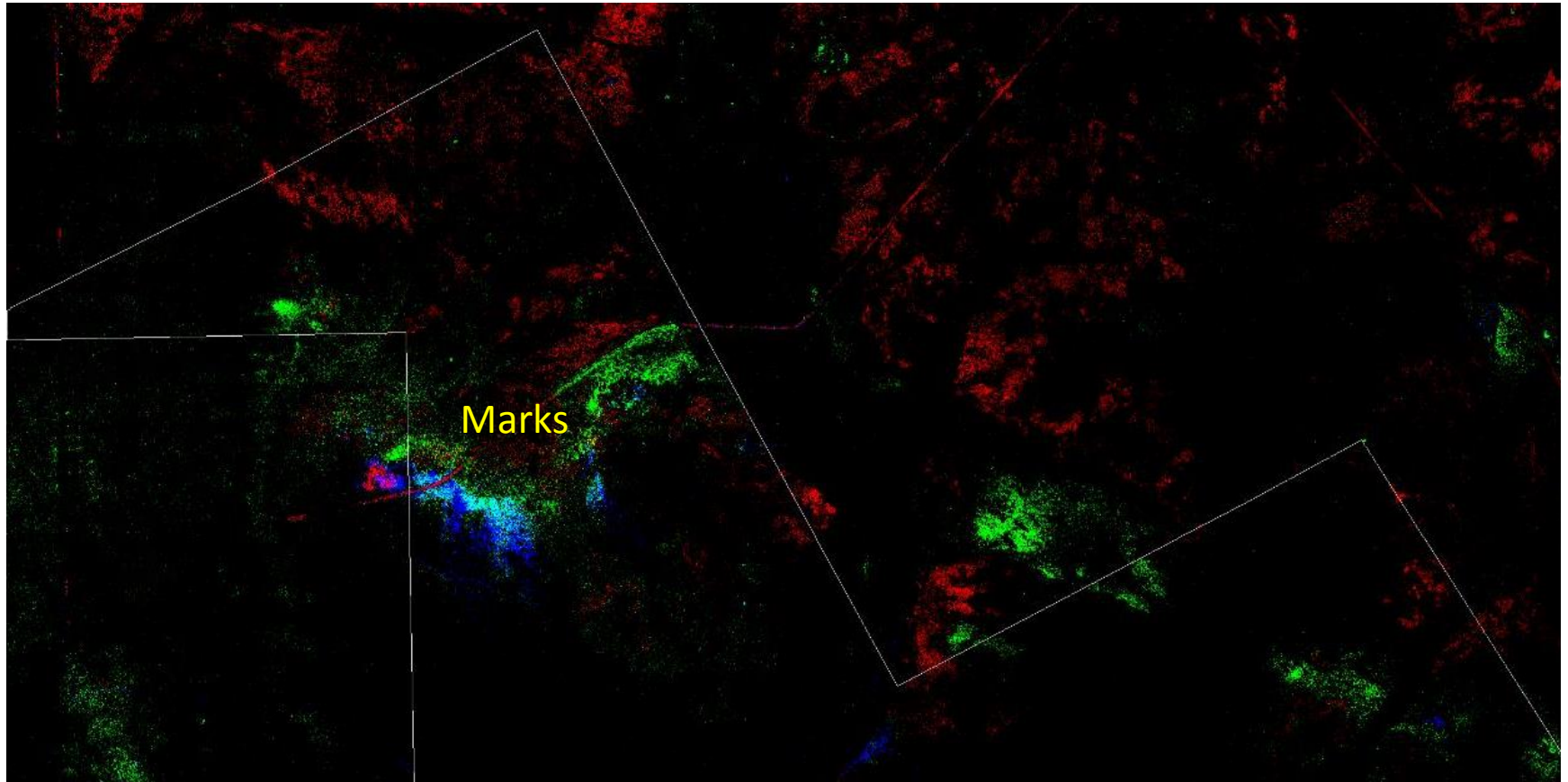
RC drilling results from Marks

Drilling results show thickness and grade

RC	Dip/Az	GDA94	GDA94	Depth	Depth	Avg	Intercept
Hole	Degrees	Easting	Northing	From	To	Au g/t*	m
MRC08	-60/90	272982	7064899	24	37	0.67	13
			inc	34	36	3.45	2
MRC10	-60/065	272947	7064947	5	15	0.46	10
			inc	11	12	1.6	1
				47	59	1.85	12
			inc	52	58	3.44	6
			inc	52	53	15.3	1
MRC11	-60/330	272980	7064977	14	30	1.22	16
			inc	16	19	3.15	3
MRC12	-60/330	272949	7064955	36	41	0.83	5
			inc	38	40	1.4	2
MRC13	-60/330	272915	7064931	49	52	0.51	3
			inc	49	50	1.09	1



Structure and alteration minerals



- Alteration on structure stands out through cover
- **Red = Goethite**, **Green = Chlorite** and **Blue = Phengite**



Looking elsewhere on the lease

- New anomalies identified
- Anomalies on geochemistry
- Previous work wide spaced
- Southern targets suggested
- Geochem and HyMap same
- Drill gaps are on structures



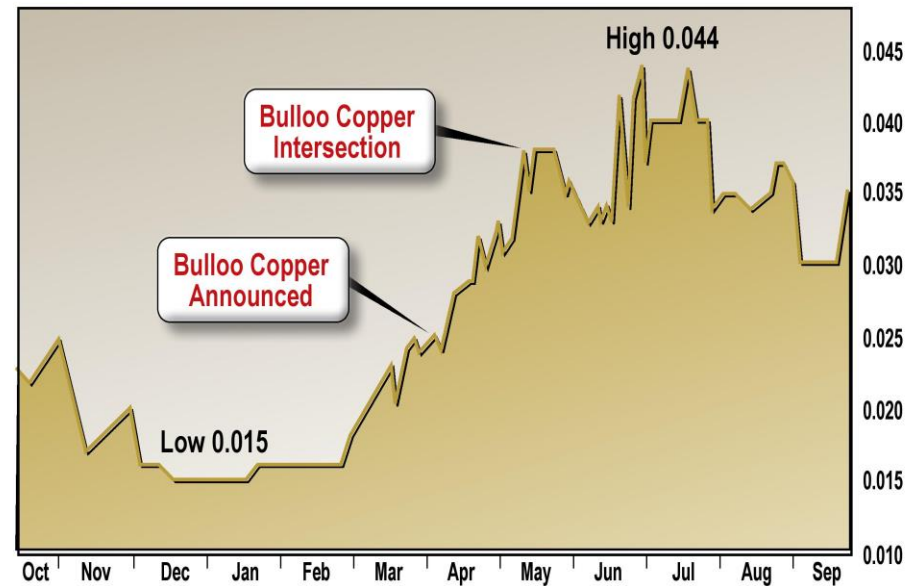


Investment Summary

- Exploring and drilling advanced projects
- Short time frame for discoveries
- Opportunity for commercial discoveries
- Adequately funded with \$2M cash
- 150M shares on issue

In the right areas for the right reasons at the right time!

Chart showing daily prices over 11 months for security AAJ



Thank you and please visit us at Booth 13