



# TECHNOLOGY DEFINES DRILLING TARGETS IN COPPER AND GOLD

---

The Gold Investment Symposium • October 2014  
Managing Director • Peter Schwann



# Disclaimer and Competent Person's statement

## Forward Looking Statements Caution

Certain statements contained in this document constitute forward looking statements. Such forward-looking statements are based on a number of estimates and assumptions made by the Company and its consultants in light of experience, current conditions and expectations of future developments which the Company believes are appropriate in the current circumstances. These estimates and assumptions while considered reasonable by the Company are subject to known and unknown risks, uncertainties and other factors which may cause the actual results, achievements and performance of the Company to be materially different from the future results and achievements expressed or implied by such forward-looking statements. Investors are cautioned that forward looking information is no guarantee of future performance and accordingly, investors are cautioned not to place undue reliance on these forward-looking statements.

## Competent Person Statement

The information in this presentation that relates to Mineral Resource and Exploration Results is based on information compiled by Mr Peter Schwann who is the Managing Director of Aruma Resources Limited. Mr Schwann is a Fellow of the Australasian Institute of Mining and Metallurgy and a Chartered Professional (Geology) and has sufficient experience that is relevant to the style of mineralisation and type of deposit under consideration and to the activity being undertaken to qualify as Competent Person as defined in the 2012 Edition of the *"Australasian Code for Reporting of Exploration Results, Mineral Resources and Ore Reserves"*. Mr Schwann consents to the inclusion in the release of the matters based on this information and the form and context in which it appears. All exploration results reported have previously been released to ASX and are available to be viewed on the Company website [www.arumaresources.com](http://www.arumaresources.com). The Company confirms it is not aware of any new information that materially affects the information included in the original announcement. The Company confirms that the form and context in which the Competent Person's findings are present have not been materially modified from the original announcements.



# Why is this presentation different?

## Aruma is DRILLING high grade metal targets

- DEFINED COPPER AND GOLD TARGETS
- DEFINED BY BOTH GEOPHYSICS AND SAMPLING
- GRADE, THICKNESS AND STRIKE CONFIRMED
- DRILLING RESULTS IN THE NEXT TWO MONTHS
- FOLLOWING UP PREVIOUS SCOUT SUCCESS

*WE STILL HAVE \$1.7M CASH AS OF TODAY*

**EXPLORATION SUCCESS KEY TO OUR VALUE!**





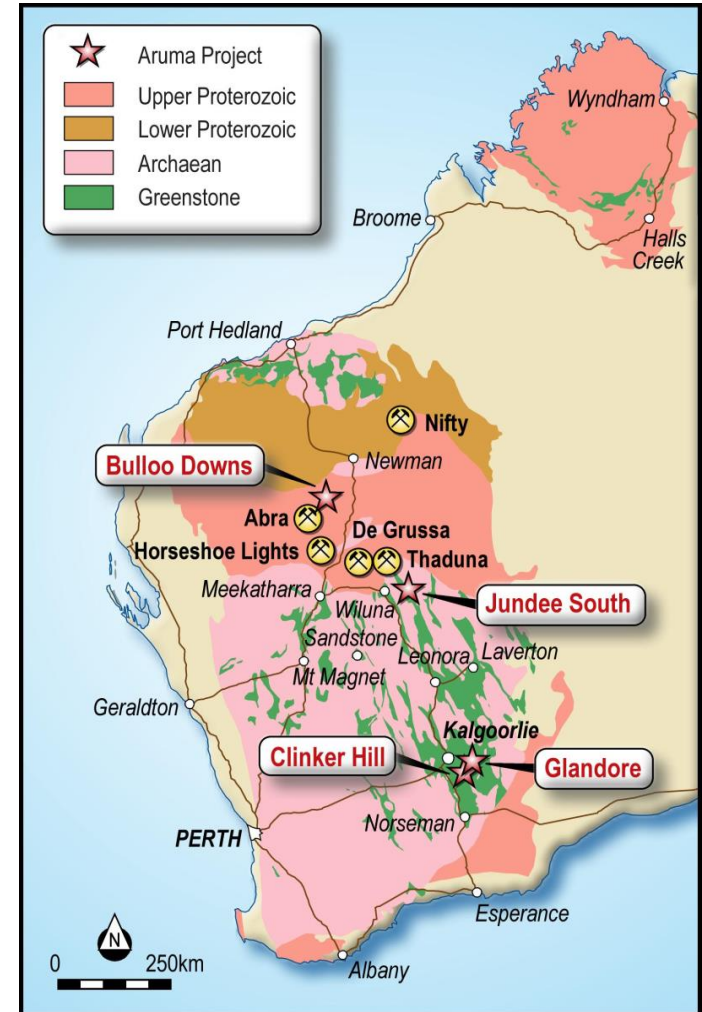
# The Best Projects

## Bulloo Downs Project - Copper

- Largest copper camp in WA
- 100km south of Newman
- High grade copper district
- 2000km<sup>2</sup> HyMap just finished
- RC drilling 6 targets in November

## Glandore Project - Gold

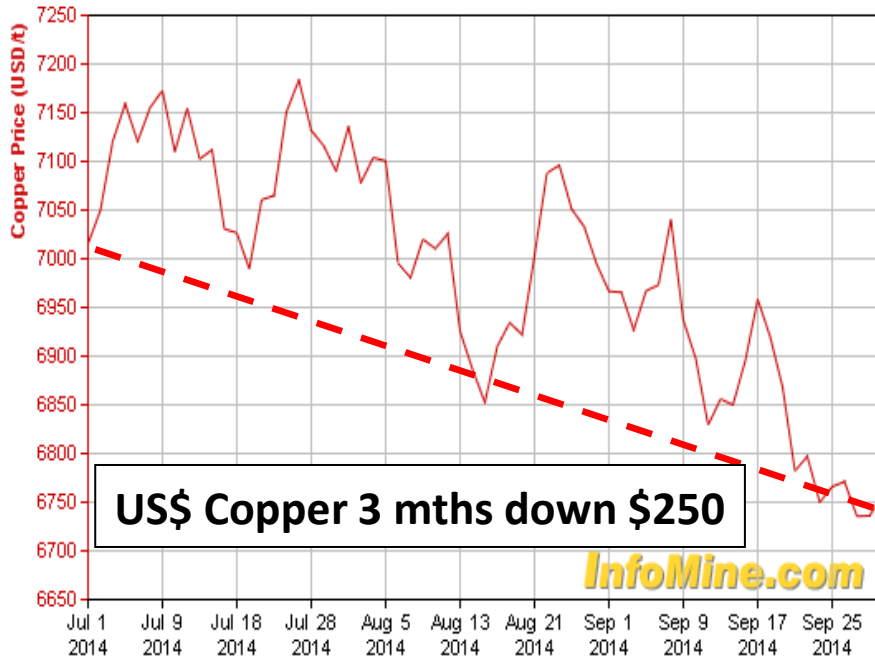
- Drilled Fluid Flow targets
- 2500m aircore just finished
- 40km east of Kalgoorlie
- No native title claim



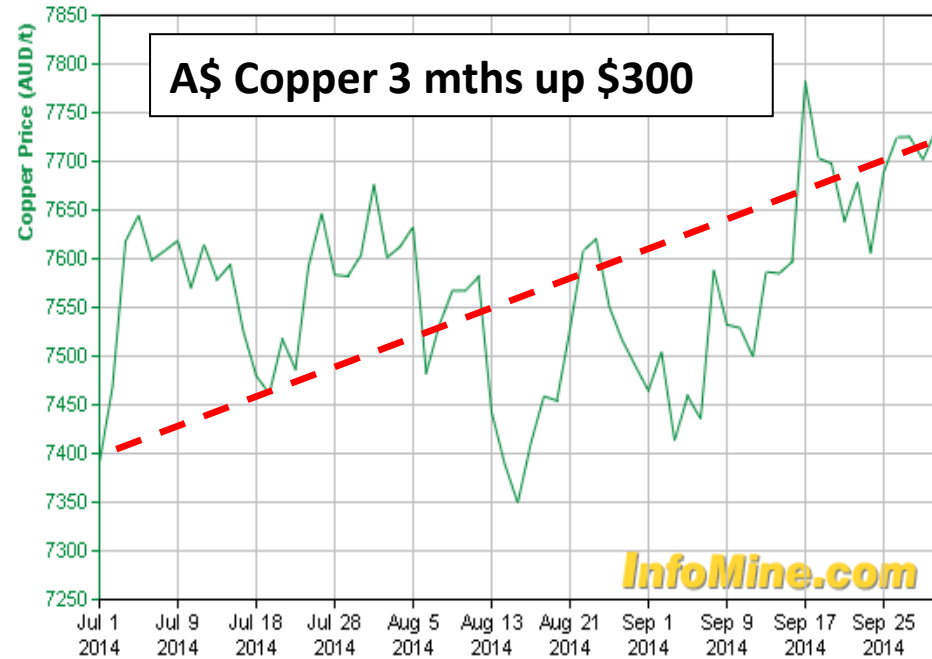


# Metals prices in Australia are good!

Copper Price  
6,754.96 USD/t  
1 Oct '14



Copper Price  
7,680.73 AUD/t  
1 Oct '14



## COPPER PRICE COMPARISONS



# Why Copper in the Ashburton?

## *A GREAT ADDRESS*

- EMERGING COPPER PROVINCE
- Over 2Mt of metal resources
- Hosts De Grussa, Nifty, Telfer, Yuneena, Thaduna and Horseshoe
- HIGH GRADE – 1.5 to 5% Cu
- CRUSTAL STRUCTURES HOST DEPOSITS
- POSITIVE HERITAGE OUTCOMES

## *A GREAT COMMODITY*

- COPPER IS >\$7500/t
- COPPER IS REQUIRED FOR INFRASTRUCTURE
- DEMAND PREDICTED TO INCREASE
- COPPER IS A HIGH MARGIN METAL



# Why Copper at Bulloo Downs?

## *A GREAT LOCATION*

- NUMEROUS COPPER OUTCROPS
- LARGE POWERFUL STRUCTURES
- STRONG COPPER GOSSANS
- GOLD AND SILVER CREDITS
- UNDEREXPLORED OR IGNORED
- CLOSE TO INFRASTRUCTURE
- FRIENDLY PASTORALIST

## *A GREAT PROJECT*

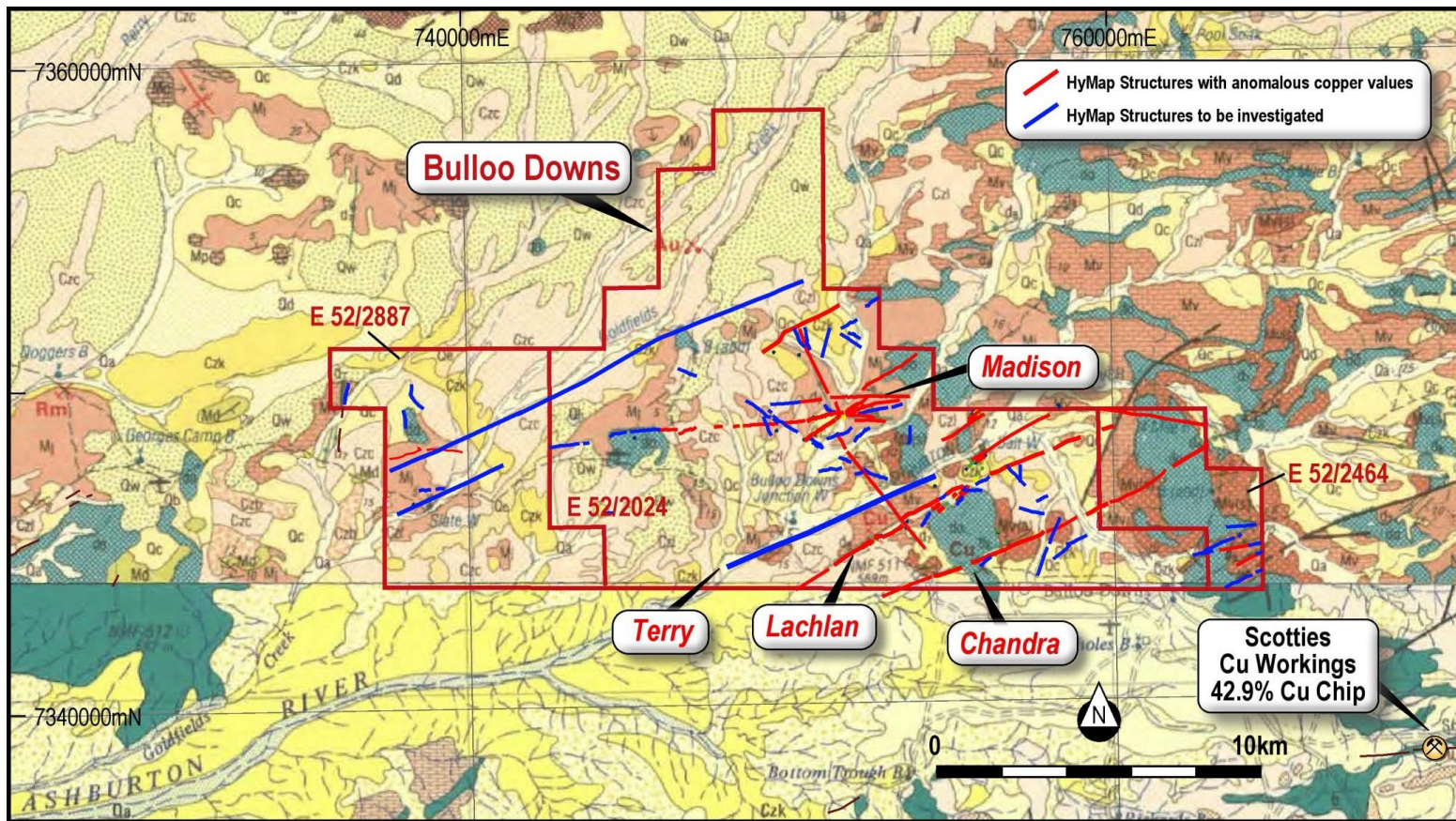
- LOW ENTRY COST
- SPEND \$1.1M- 3yr FOR 90%
- GOOD EXPLORATION RESPONSE
- HYMAP RESPONSIVE
- SUCCESS IN GEOCHEMISTRY AND DRILLING
- A GOOD LAND PACKAGE
- CONTROL OF EXTENSIONS





# Bulloo Downs Project - Initial area

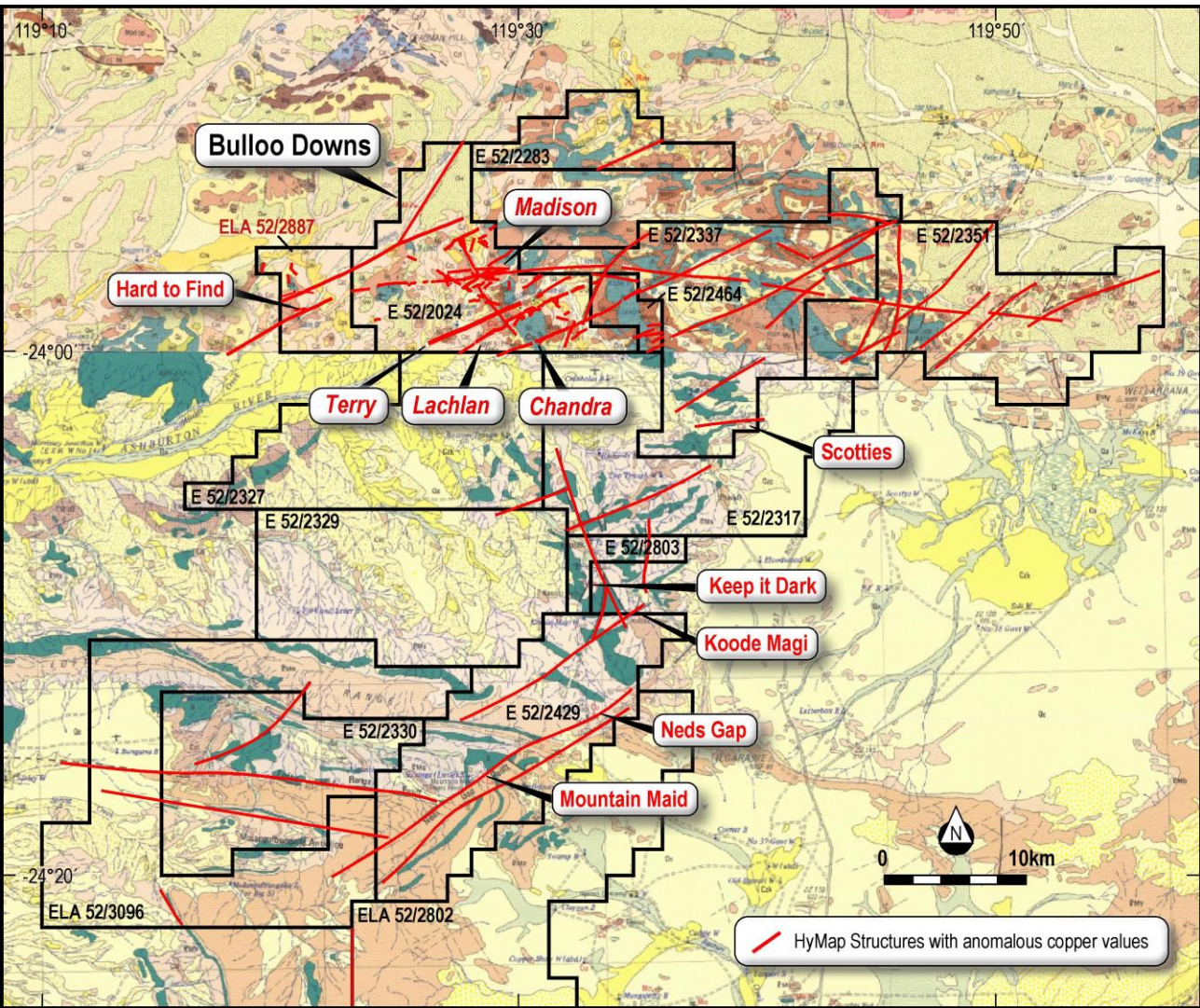
An interesting 218km<sup>2</sup> copper project







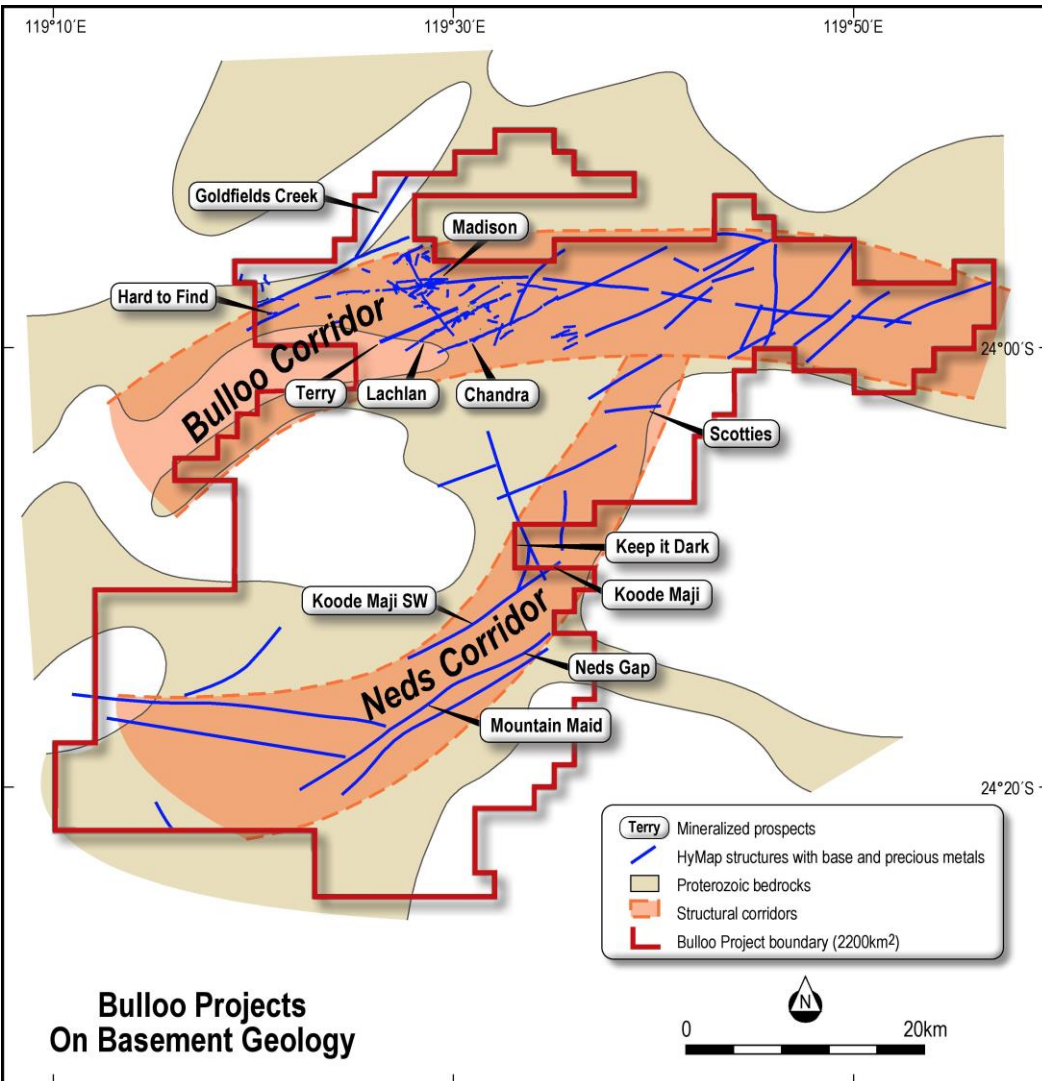
# Bulloo Downs Project - Stage 2 area



An exciting  
2200km<sup>2</sup> copper  
project



# Mineralised Corridors

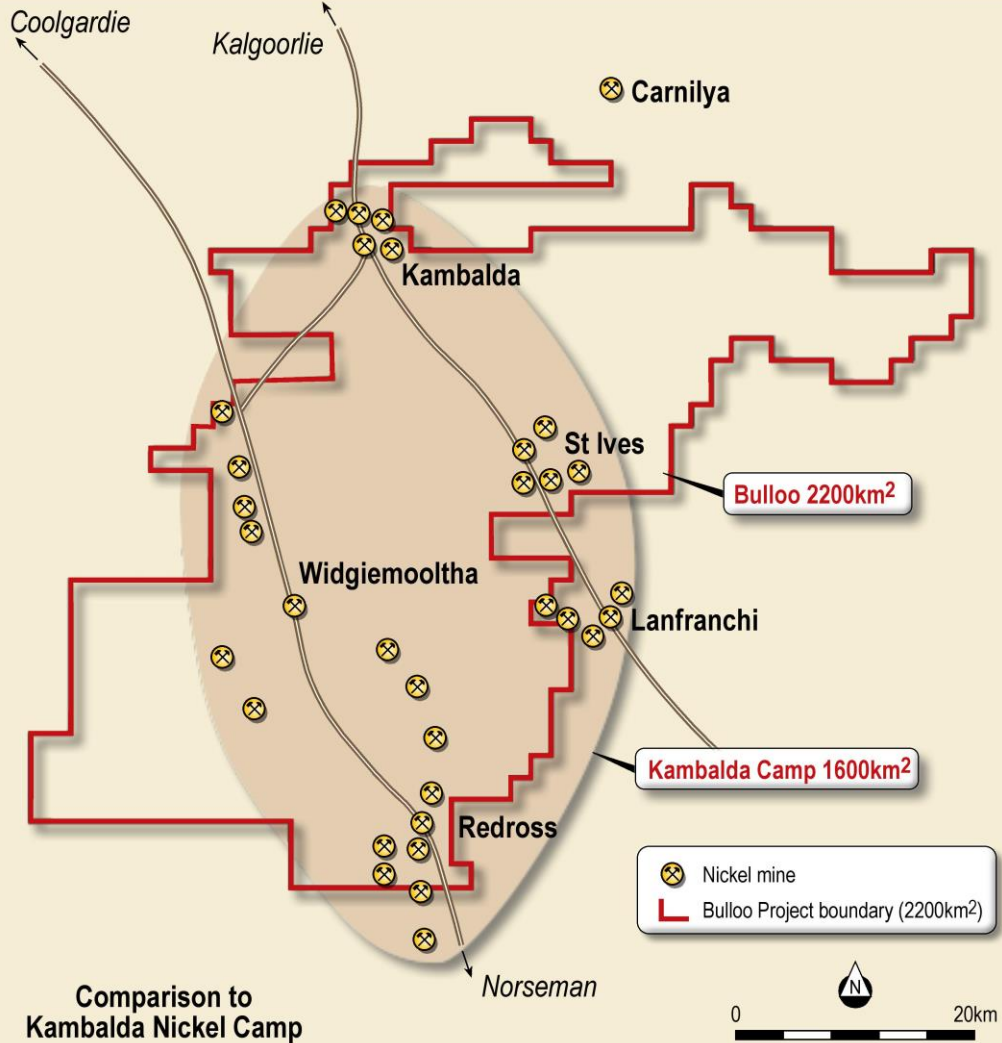


Two corridors on a  
2200km<sup>2</sup> copper  
camp





# How Big Is Bulloo Downs Copper?

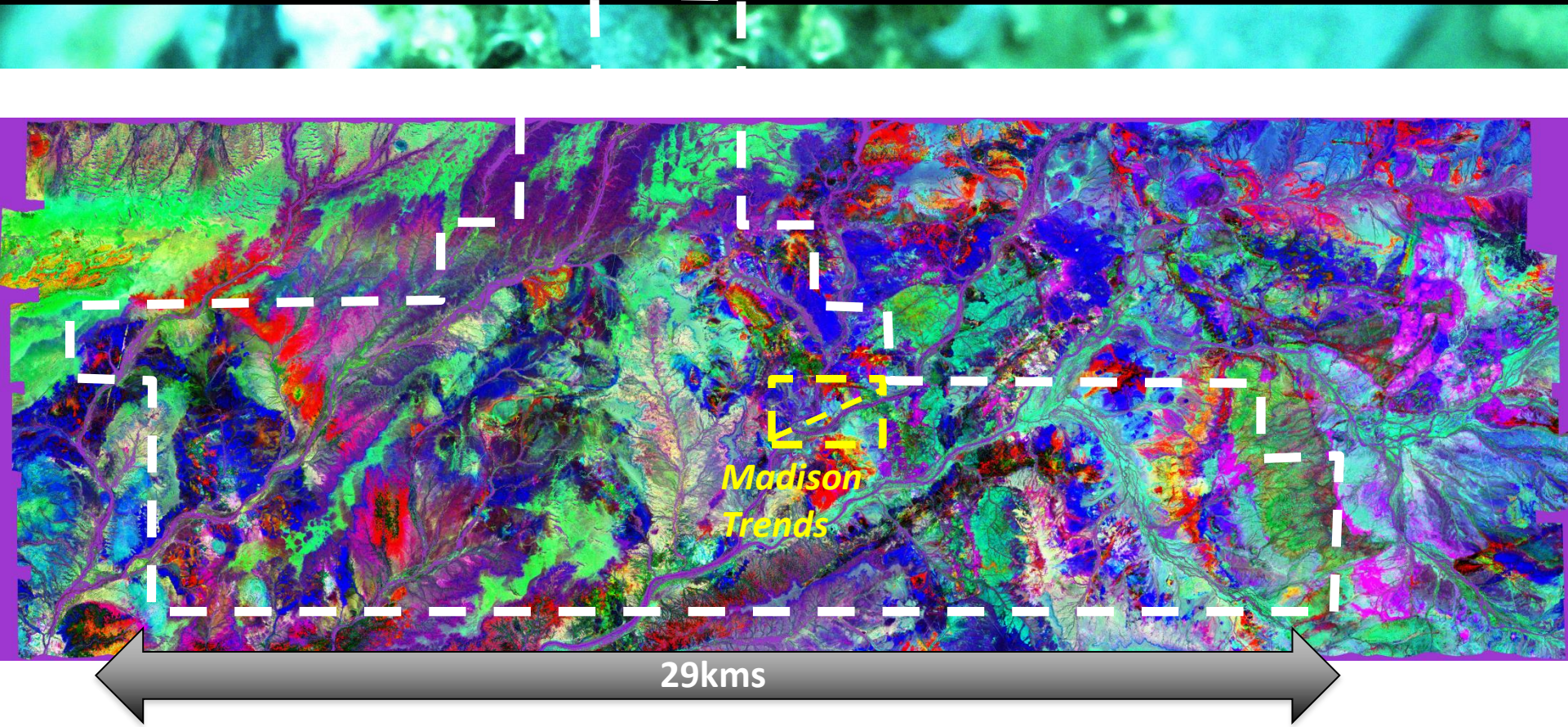


- Aruma uses HyMap
- Over 2800km<sup>2</sup> covered
- Rapid evaluation done
- Area reduction quickly
- Costs minimised
- 6 Tier 1 targets





# HyMap image of Bulloo Copper Project



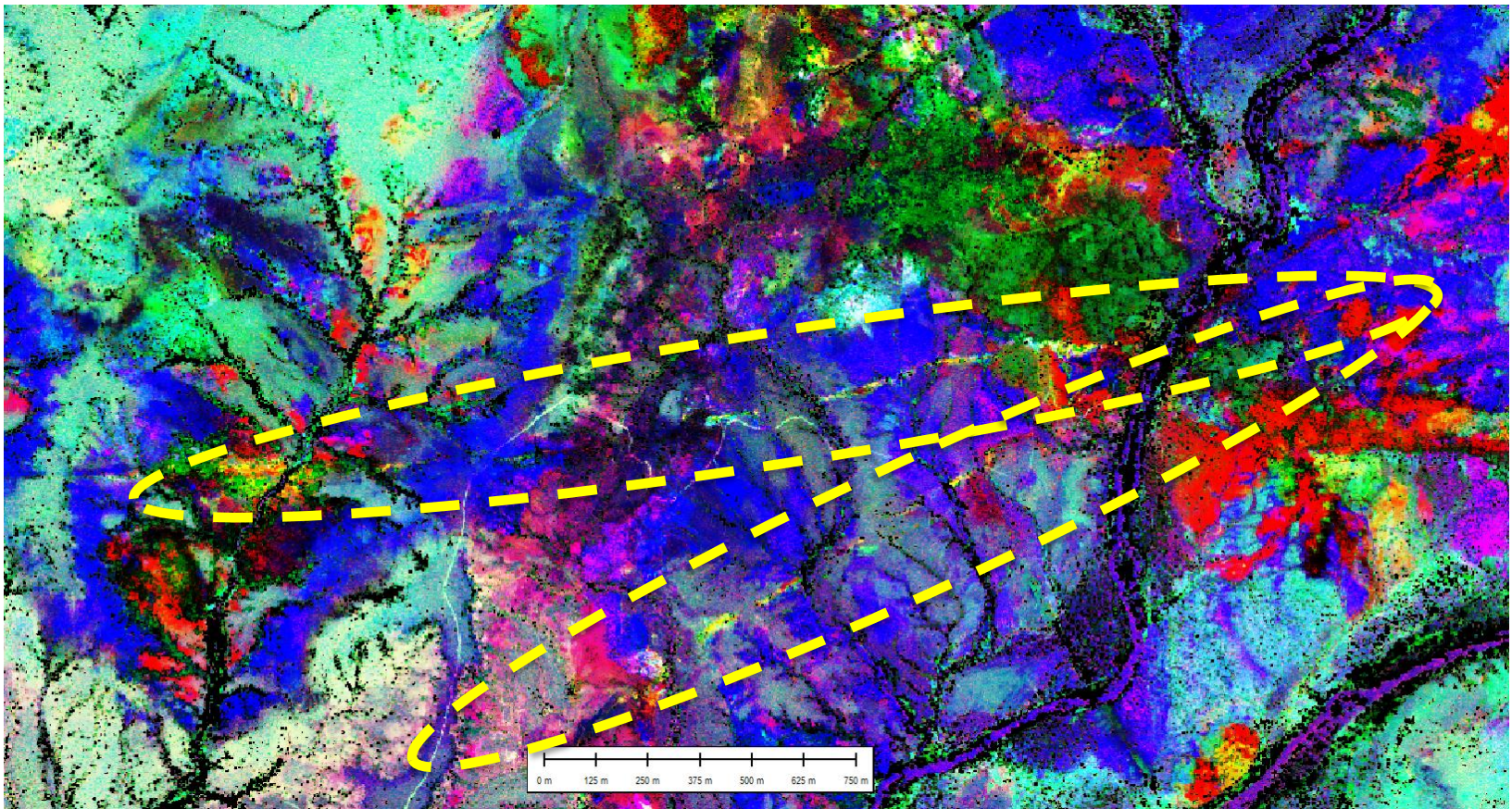
- HyMap gives Structure ✓
- Sampling gives high copper ✓
- First drilling hits 4m @ 2.2% Cu ✓





# HyMap image of Madison

## Madison Trends – Bulloo Copper Project







# Gossan - Madison East

6-42% Copper in surface gossan







# Large Gossan Dimensions

Location	Action	Length m	Width m	Cu %	Au ppm
Scotties	<b>DRILL</b>	100	2	42.93	1.5
Madison	<b>DRILL</b>	3000	3	42.6	1
Chandra	<b>DRILL</b>	8000	2	7.63	<0.1
Terry's	<b>DRILL</b>	800	2	0.57	<0.1
Koode Maji	<b>DRILL</b>	100	2	15.9	<0.1
Neds Gap	<b>DRILL</b>	1100	2	16.7	<0.1
Mountain Maid	EVALUATE	600	2	35	<0.1

**Kambalda Ni Cu gossans were 2m by 1m!**

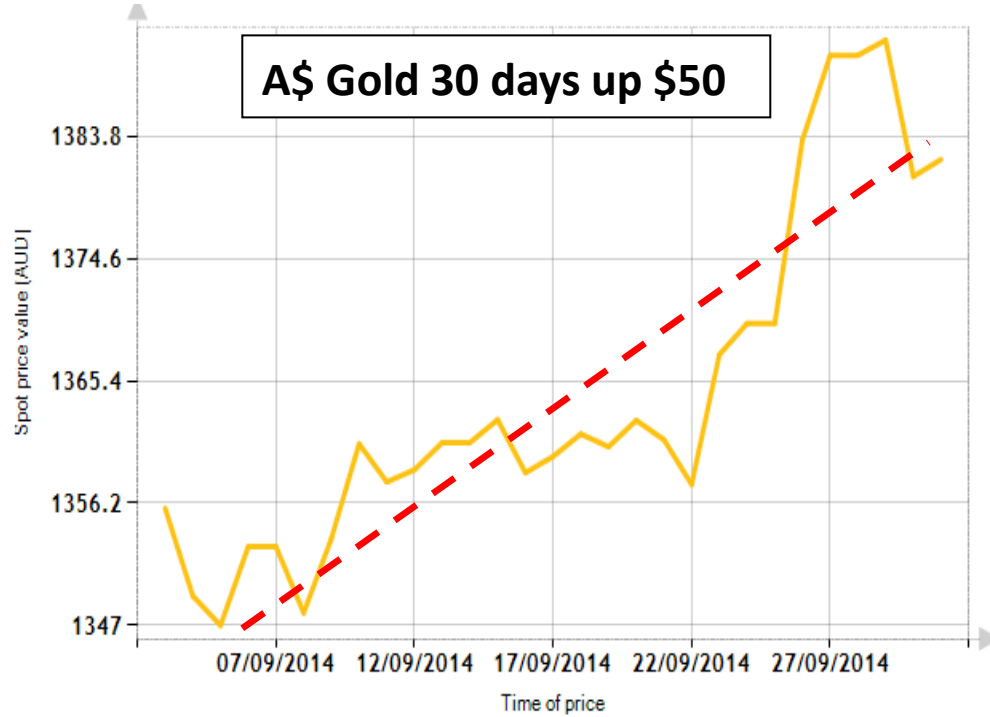
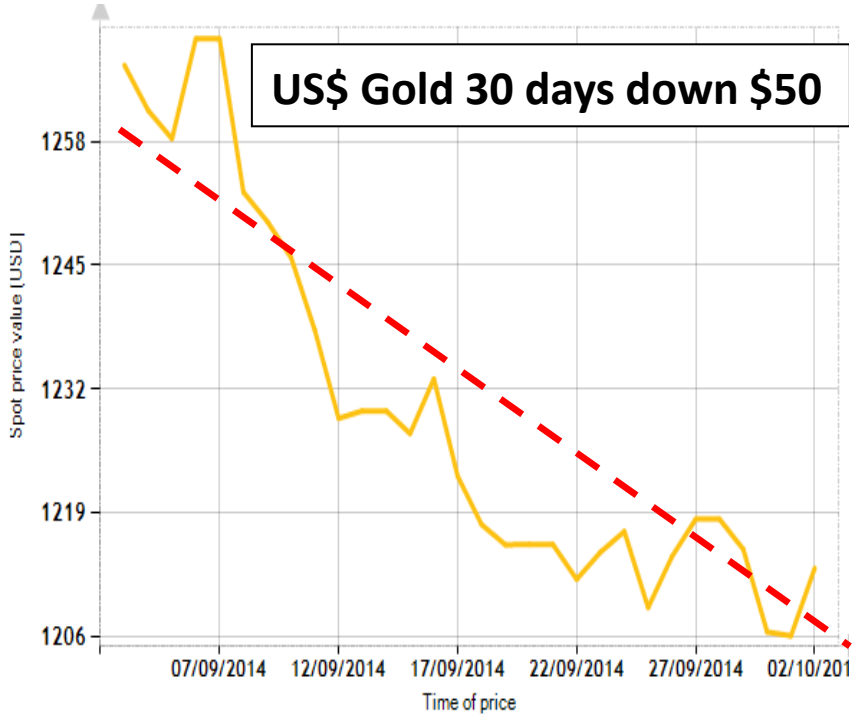


# Exploration and Development

- Leases over **200km<sup>2</sup>** optioned (**January**)
- Rock chips and mapping **high copper values** (**January- March**)
- **4m at 2.2% copper** in first pass drilling program (**March**)
- All drill lines hit **copper** anomalism (**March**)
- HyMap alteration over 80km sampled (**May**)
- Heritage survey completed over 15km of anomalies (**May**)
- Additional 1900km<sup>2</sup> optioned (**June**)
- Further mapping and sampling completed (**June**)
- HyMap flown over new 2000km<sup>2</sup> (**September**)
- Follow up drilling planned (**October-November**)



# Gold price dropping every day?



## GOLD PRICE COMPARISONS





# GOLD WILL BREAK OUT OF THE ETF CEILING!

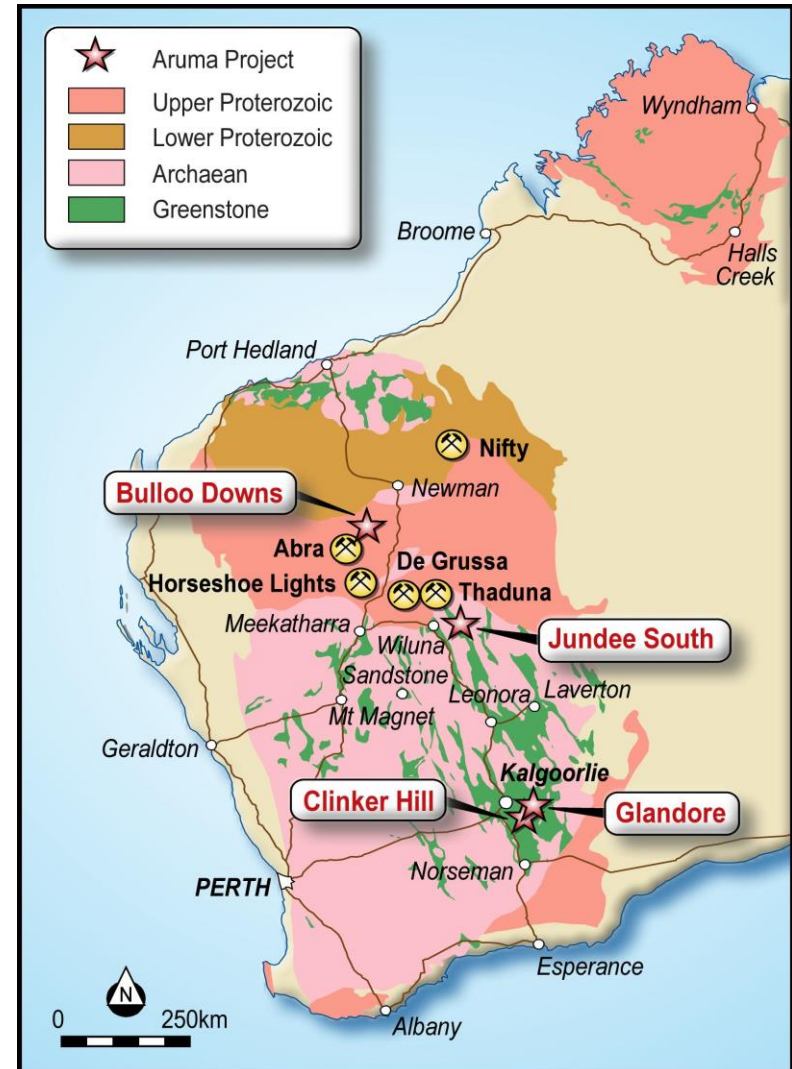
## Why Aruma is still after Gold!

- **Gold is profitable**
  - Where you have hungry plants
  - Where you can open cut soft ore
  - Where you have high (>3g/t) grade
  - Where you have infrastructure
  
- **Gold Mining is still a company maker**
  - When you have virgin operations
  - When you have high grade and thick zones
  - When you have 100% ownership



# Aruma's Gold Projects

- Kalgoorlie and Wiluna
- Great addresses with:
  - Grade and thickness
  - Virgin projects with thin cover
  - Proven gold endowment
  - Ready to drill
  - Close to infrastructure
  - Positive Native Title outcomes
  - Onside pastoralists





# Proven Gold Provinces

## Grade and thickness = powerful systems

- **Kalgoorlie**  
~50M ozs
- **Kanowna Belle**  
~6M ozs
- **Salt Creek-Majestic**  
~1M ozs
- **Jundee**  
~7M ozs

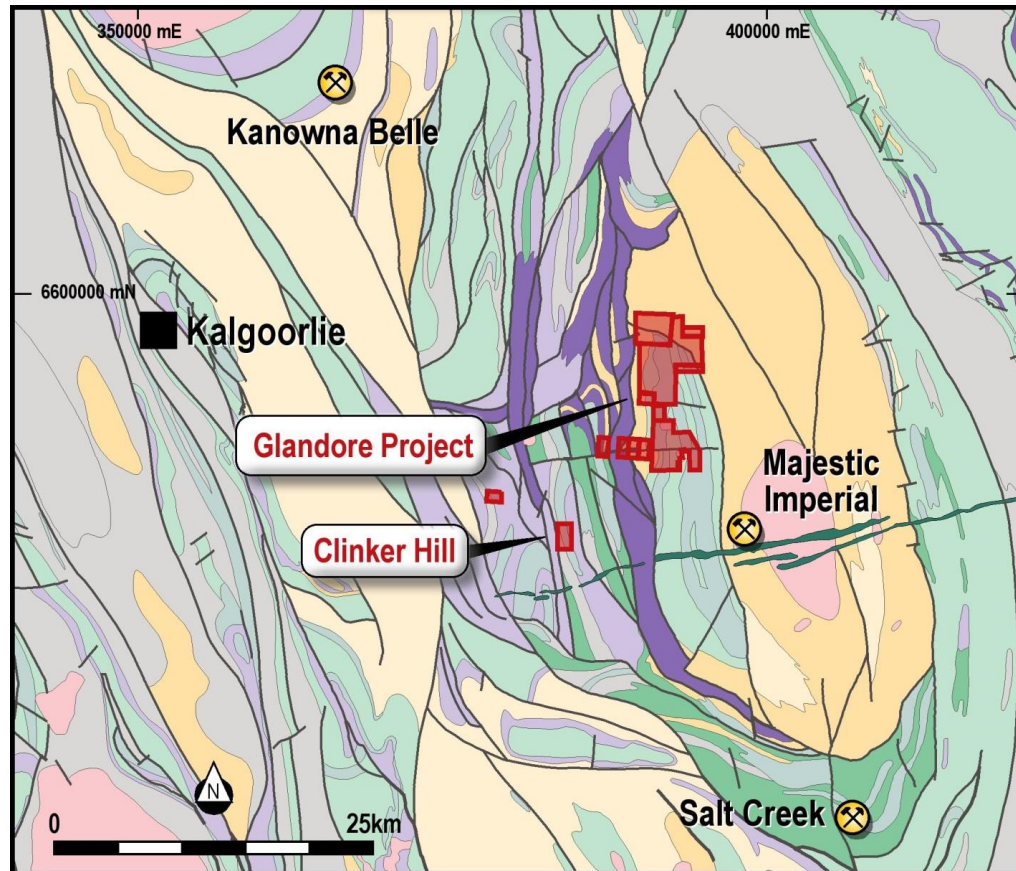
PROJECT	Intersections	Grade	From
GLANDORE	10m	10.27 g/t Au	58m
	8m	10.4 g/t Au	18m
	9m	4.22g/t Au	13m
	5m	4.3g/t Au	60m
JUNDEE	4m	15.37/t Au	7m
	6m	3.44g/t Au	18m
	4m	4.84g/t Au	21m





# Glandore Gold Project

40km east of Kalgoorlie by bitumen road



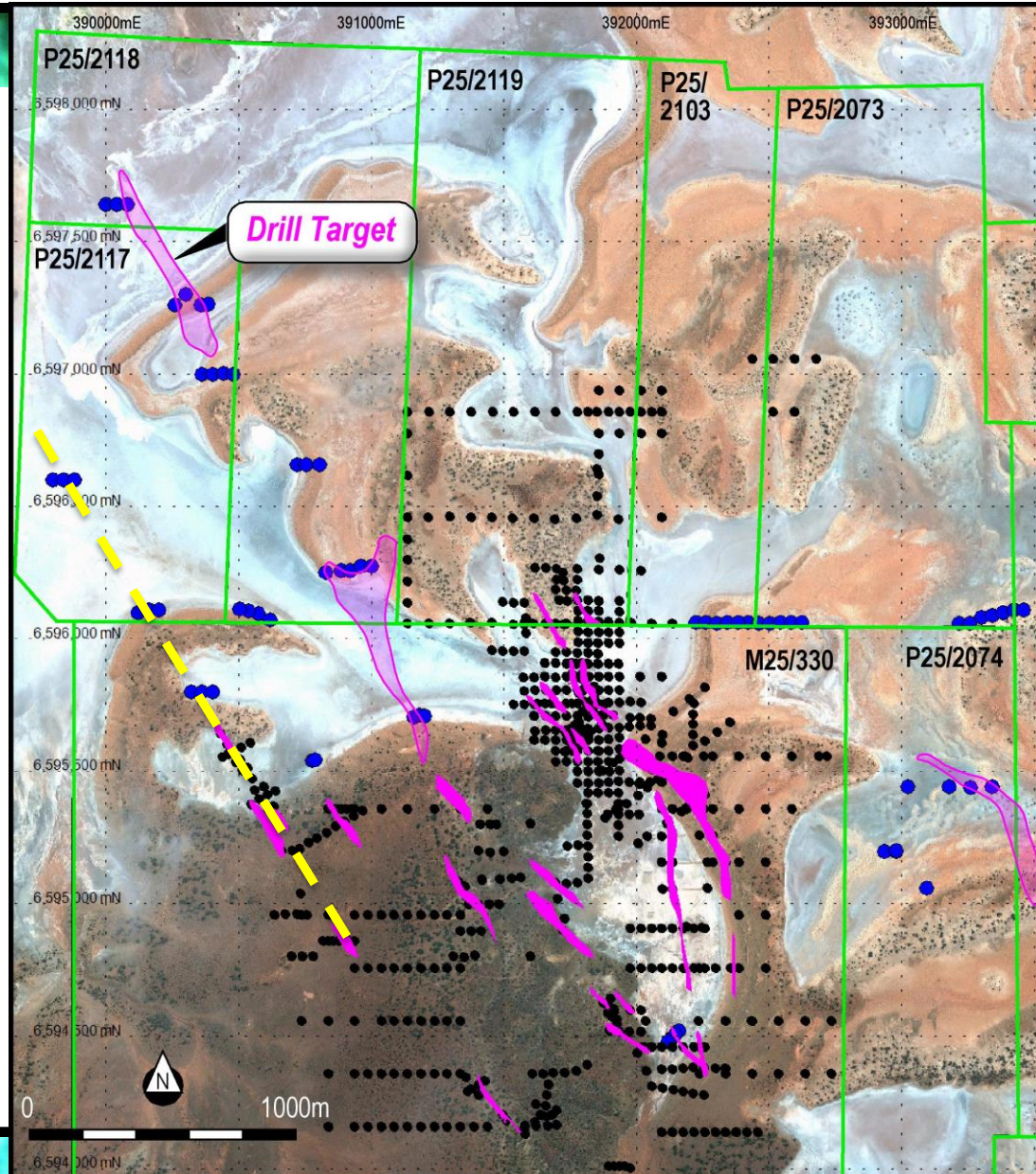




# Glandore Gold Drilling Program

## STRONG SYSTEMS

- Mineralisation in pink >1g/t from previous drilling
- Targets from Fluid Flow
- Yellow dashes are the Steves Line trend
- Black dots previous holes
- Completed 67 holes (blue dots)
- 2519m aircore done
- Aircore holes to >60m







# Glandore Lake Drilling Program

## Lake Drilling Rig

### Why aircore?

- Gives good samples
- It can drill on lakes
- Low impact
- Drills softer material
- \$30/m (\$31 actual)
- Aircore holes to >60m





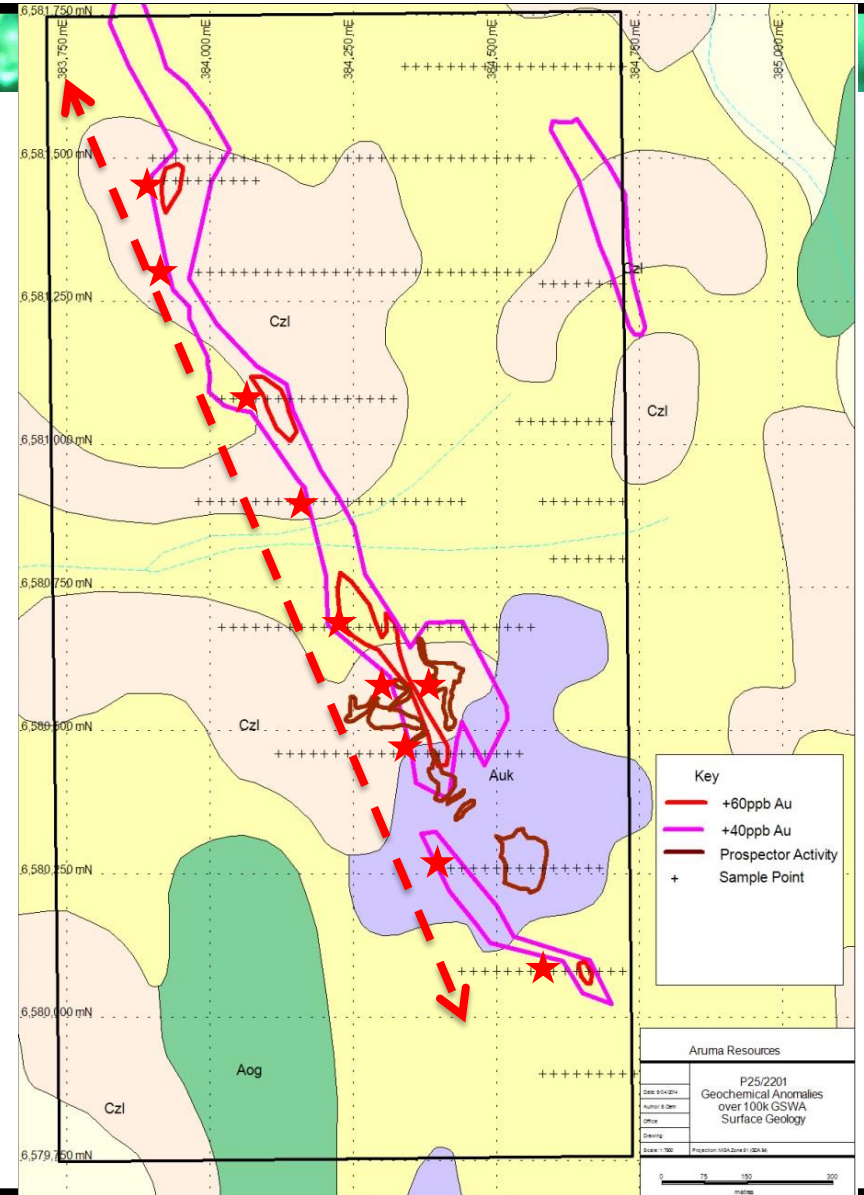
# Clinker Hill Gold Prospect

- 50km east of Kalgoorlie

- 1800m gold anomaly



- RC drilling planned ★

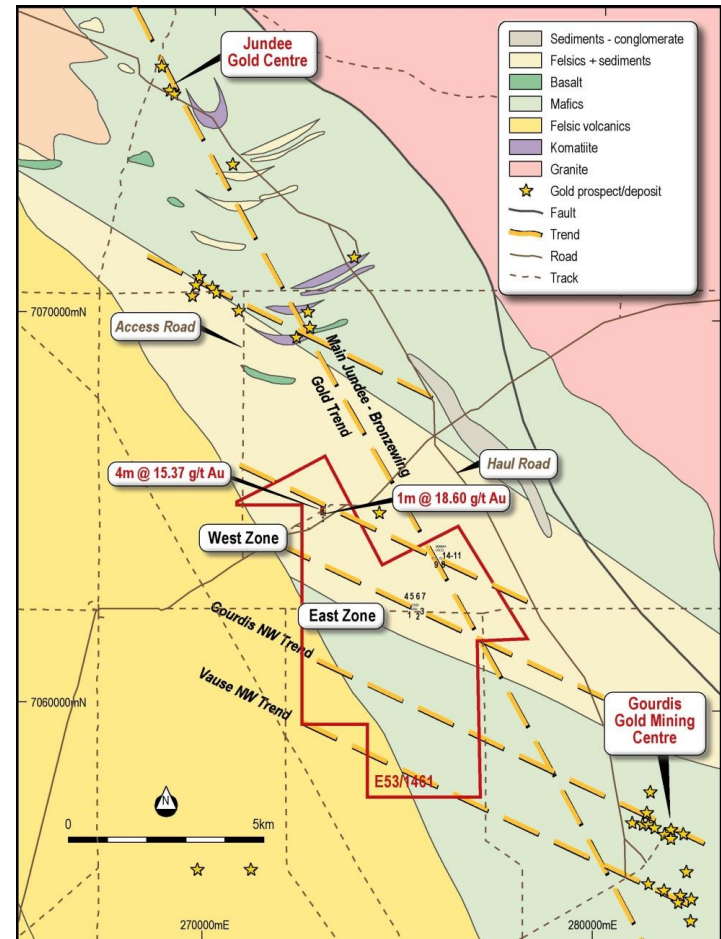






# Jundee South Gold – a virgin discovery

- Located 60km from Wiluna
- 2.5km from Jundee haul road
- 25km from Jundee mine
- 3 major lineaments
- HyMap anomaly on discovery
- Coincident soil anomaly
- Intersections shallow and soft
  - 12m @ 1.85g/t Au
  - 16m @ 1.22g/t Au





# Investment Summary

- Copper and gold projects in great areas
- Actively exploring and drilling advanced projects
- Short time frame for discoveries
- Opportunity for commercial discoveries
- Adequately funded with \$1.7M cash and R&D refund in March
- 150M shares on issue giving leverage opportunities

**Right areas ✓ Right metals ✓ Right reasons ✓ Right time ✓**

**Thank you and please visit us at Booth 1**