



LEGEND MINING LIMITED

- Proactive Investors Presentation – October 2014

ABOUT LEGEND



- ❖ ASX listed exploration company
- ❖ Market capitalisation ~\$20M (2B shares @ 1.0c)
- ❖ Cash and liquids ~\$12M (+\$6M 07-08/2015)
- ❖ Fraser Range Project – Western Australia



Chairman
Michael Atkins



Managing Director
Mark Wilson



Exec. Director - Technical
Derek Waterfield



Company Secretary
Dennis Wilkins

PROJECT LOCATION

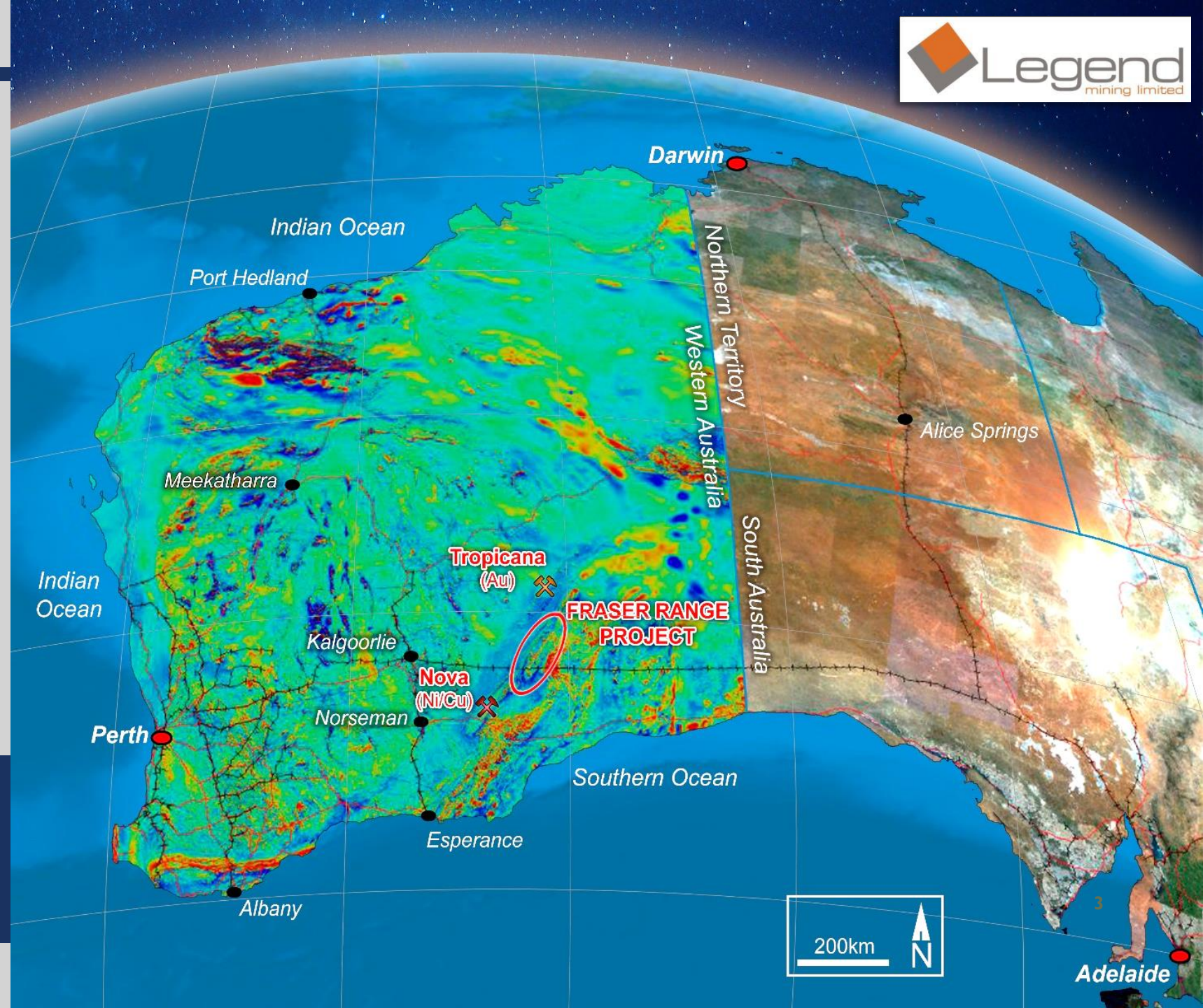
Located in northern
Fraser Range District

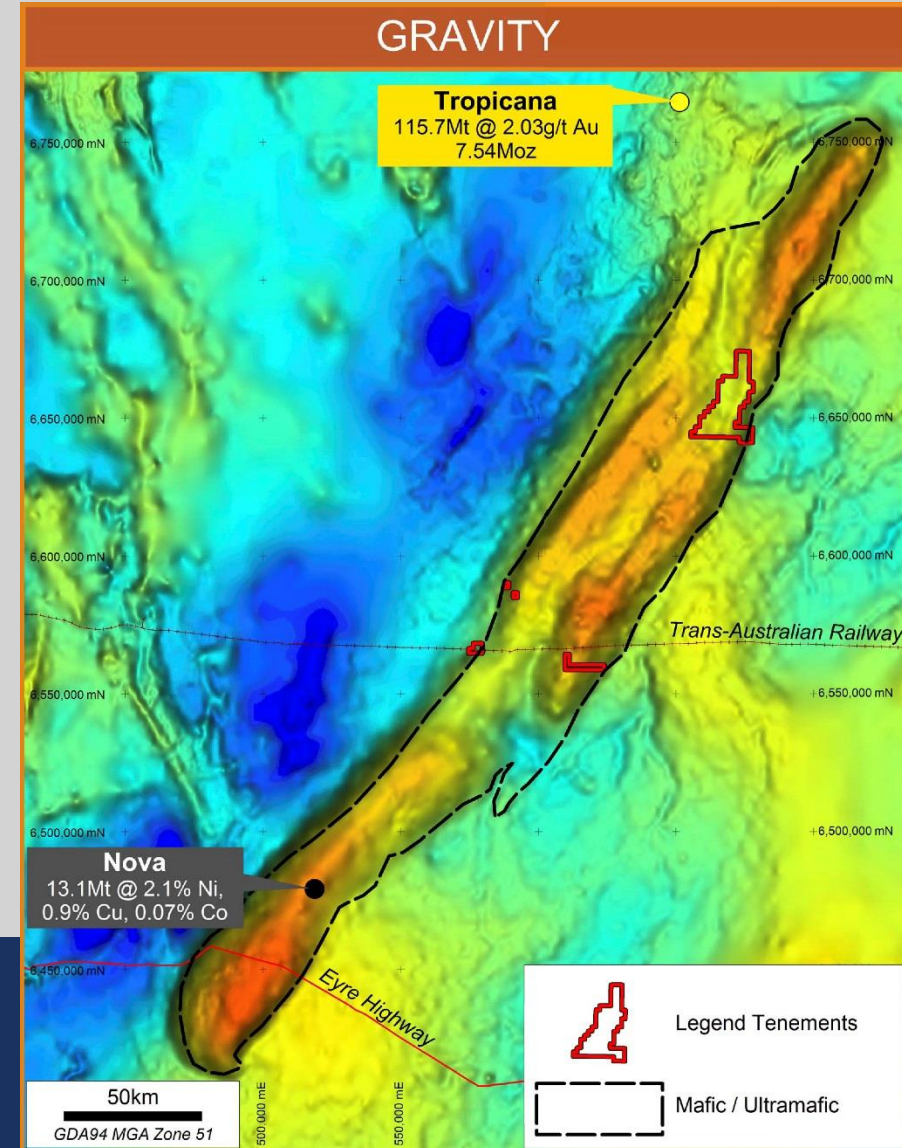
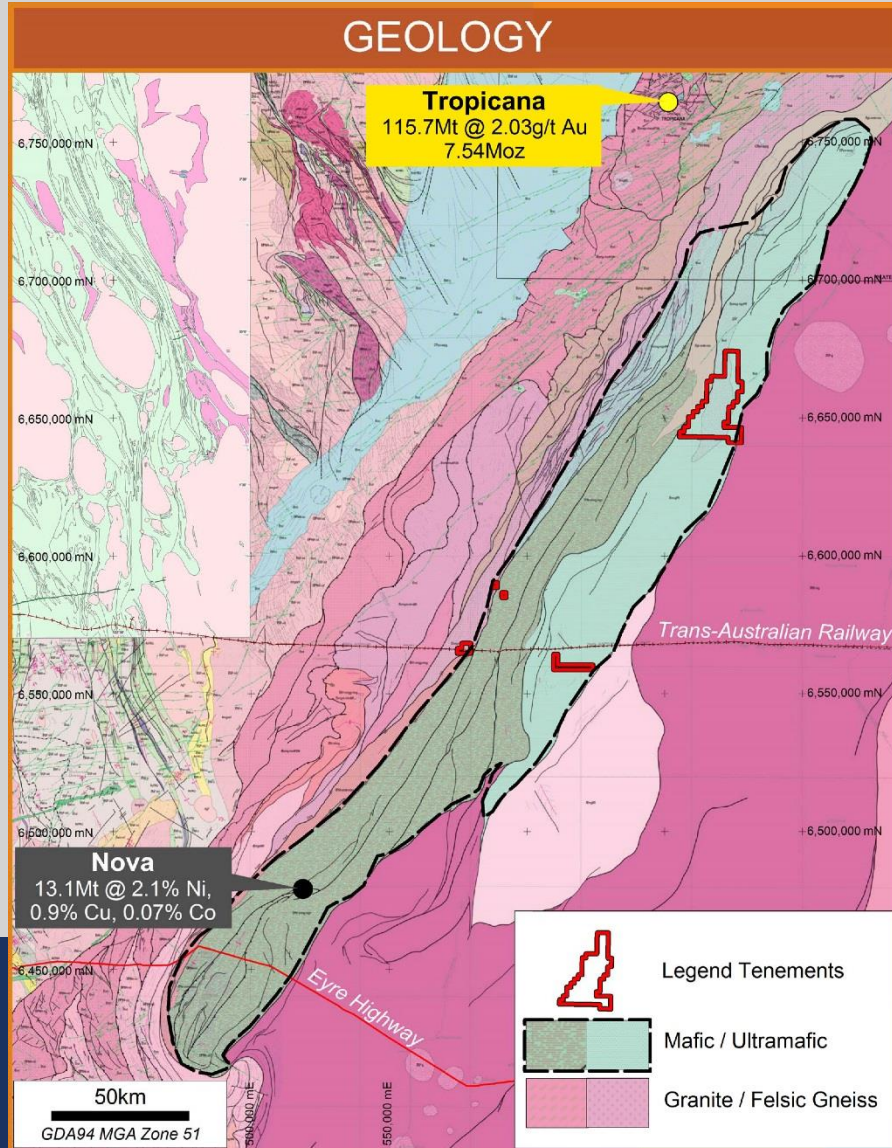
220km NE of Nova
100km S of Tropicana

Project potential for:
- Nova style Ni-Cu
- Tropicana style Au

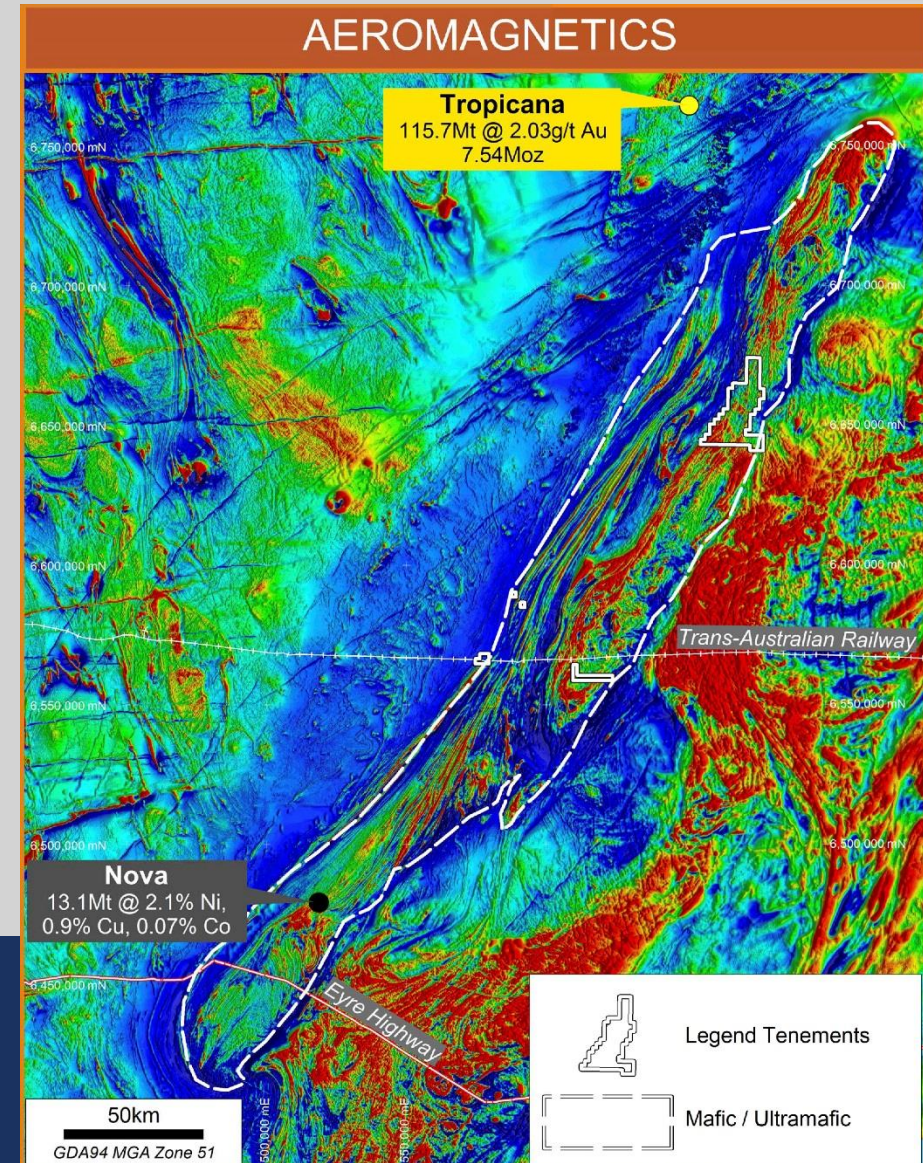
Comprises three
exploration licences
covering 409km²

Situated within
prospective “Nova”
magnetic-gravity trend



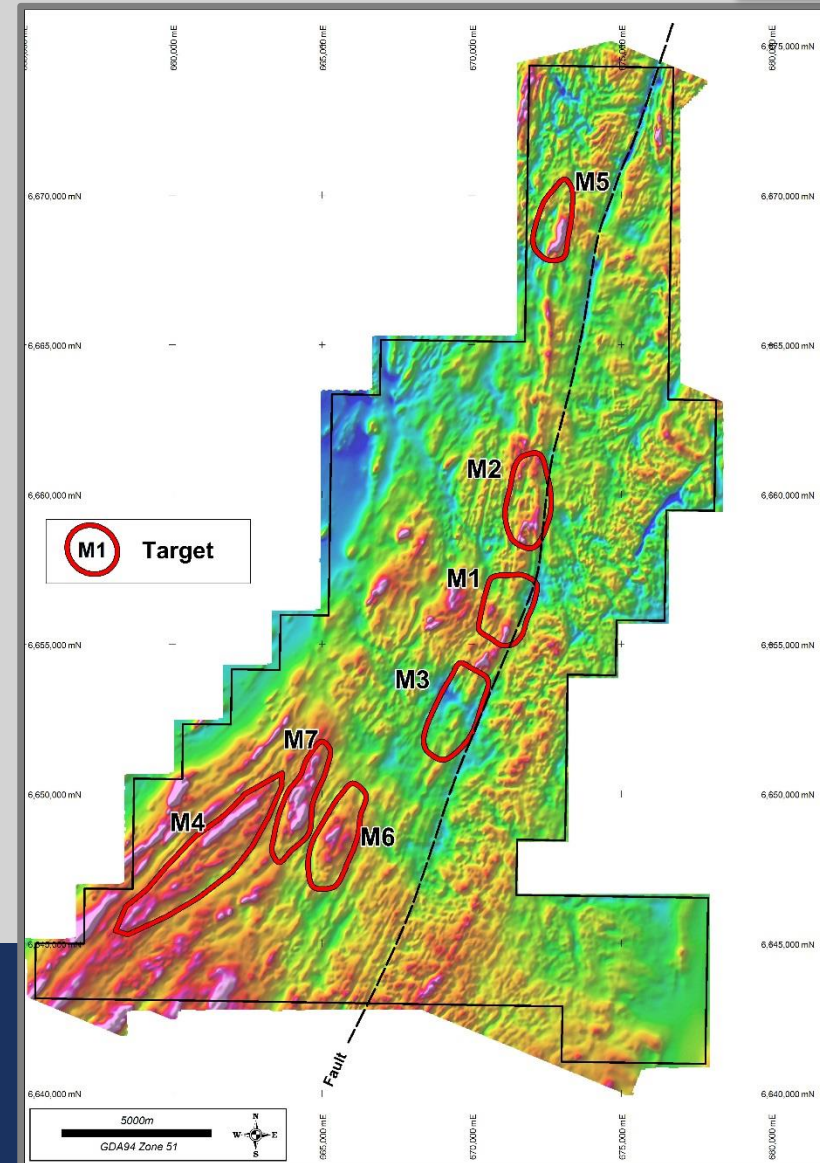


- Nova discovery “template”
- Learn from fellow explorers
- Aeromagnetics
 - *Closer line spacing*
 - *Mafic/ultramafic intrusives*
- Geochemistry
 - *Ni and Cu*
- EM - Airborne &/or Ground
 - *Definition of conductors*
- Drilling – test conductors



EM TARGETS

- Detailed aeromagnetic survey
50m line spacing
- Aeromagnetic interpretation
identified seven “intrusive”
targets for follow-up
- Major ground EM survey
underway over seven targets
- Drill testing of identified EM
conductors to be undertaken

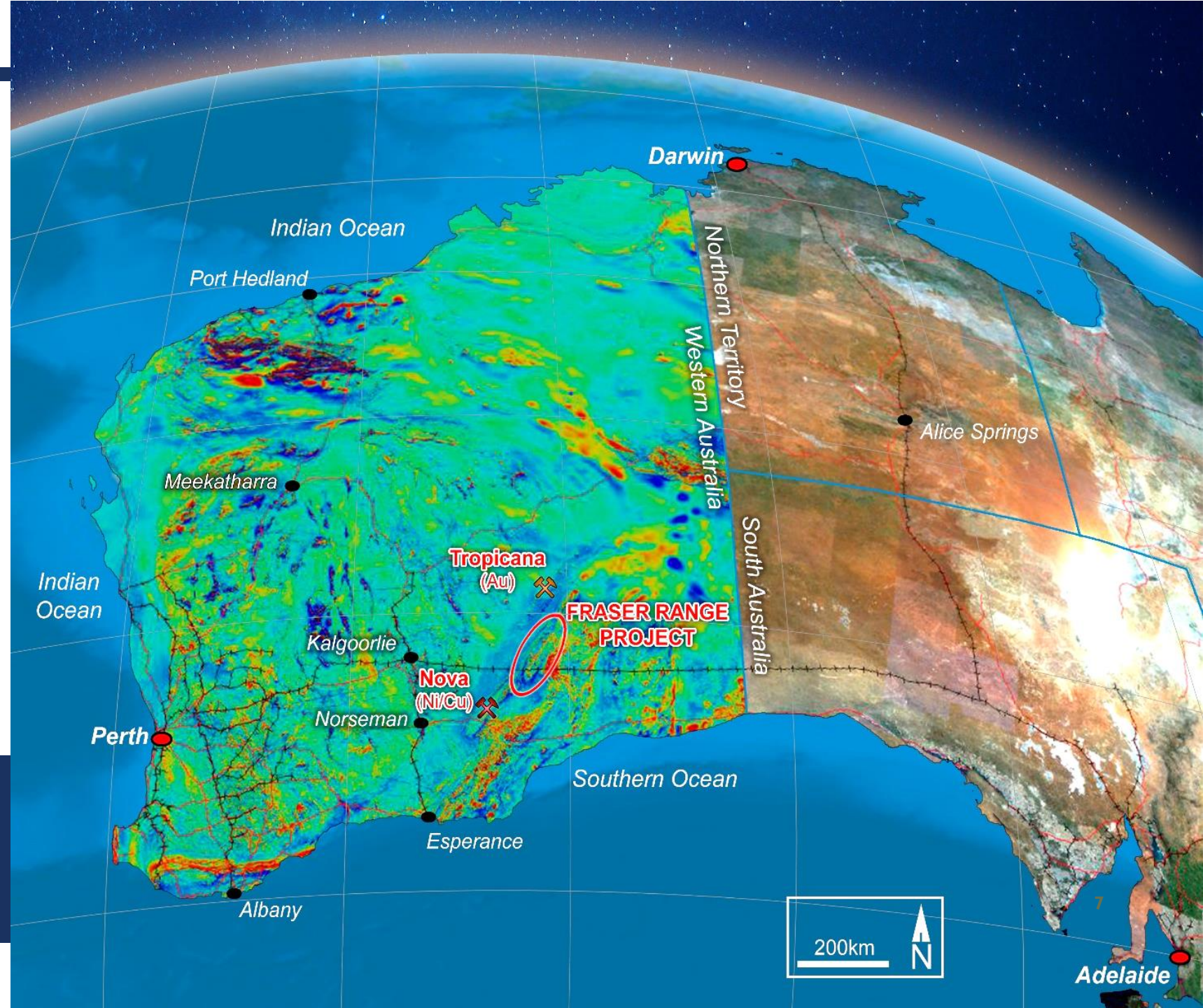


Well Funded

Fraser Range
Project

New Projects

Grow Shareholder
Value



DISCLOSURE



This is not a disclosure document. Any material used in this presentation is a summary of selected data, and any investor in Legend Mining Limited should refer to all Legend Mining Limited ASX releases and statutory reports before considering to invest in the company.

Any forward looking information in this presentation has been prepared on the basis of a number of assumptions that may prove not to be correct. Neither Legend Mining Limited, nor its officers, employees and advisors make or give any representation, warranty or guarantee in relation to this presentation.

Legend Mining Limited reserves the right to update, amend or supplement the Information in this presentation at any time in its absolute discretion without incurring any obligation to do so.

The information in this presentation that relates to exploration results is based on information compiled by Mr Derek Waterfield who is a member of the Australian Institute of Geoscientists and is a full time employee of Legend Mining Limited.

Mr Derek Waterfield has sufficient experience which is relevant to the style of mineralisation and type of deposit under consideration and to the activity which he is undertaking to qualify as a Competent Person as defined in the 2012 Edition of the 'Australasian Code for Reporting of Exploration Results, Mineral Resources and Ore Reserves' (the JORC Code).

Mr Derek Waterfield consents to the inclusion in this presentation of the matters that relate to exploration results in the form and context in which it appears.