

**ASX ANNOUNCEMENT**

**14 October 2014**

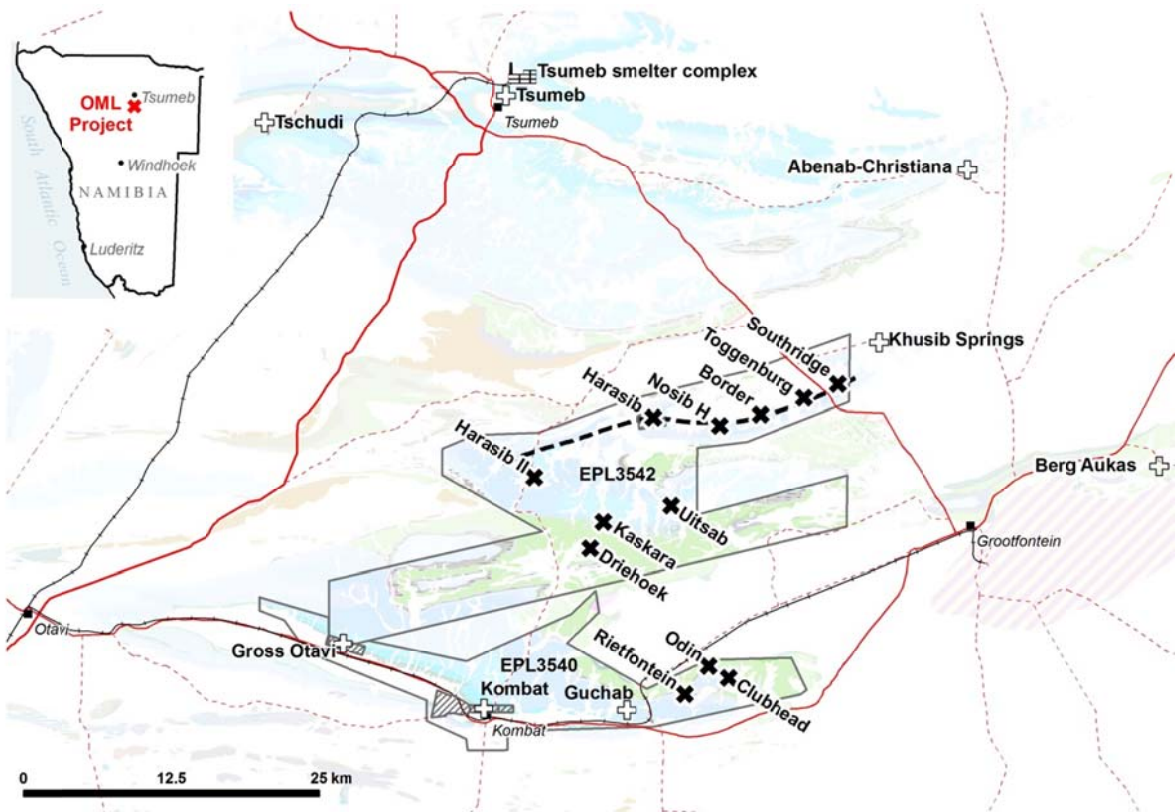
**SABRE RENEWS FOCUS ON ZINC  
EXPLORATION AND DEVELOPMENT IN THE  
OTAVI MOUNTAIN LAND**

- **Sabre renews focus on zinc and lead exploration in the Otavi Mountain Land (OML) with commencement of drilling programs.**
- **Bedrock geochemical drilling to commence on high priority targets defined from recently completed regional targeting:**
  - ▶ **Initial drill testing will commence with high priority targets at Toggenburg and East Border.**
  - ▶ **Additional zinc exploration also budgeted for other priority targets.**
  - ▶ **Zinc target generation continues in the western Pavian Trend.**
- **Exploration and development investigations recommence at Sabre's Border Zinc Lead Deposit, resource revision close to completion.**

Sabre Resources is pleased to announce the renewal of its focus on the discovery of zinc deposits throughout the Otavi Mountain Land (Figure 1). The company is commencing programs to explore for zinc and for copper simultaneously utilising newly developed exploration models for these deposit types. Sabre has the existing resources in-place in Namibia to effectively explore for both commodities.

Sabre believes the long term fundamentals for zinc and lead are resurgent and the Company anticipates a long term supply deficit sustaining higher prices for these metals. As such the Company will recommence exploration of the Pavian Zinc-Lead Trend this quarter. Additionally, the Company will continue its advancement of the Border zinc-lead deposit to detailed scoping and feasibility, commencing with the release of a revised Mineral Resource statement for the deposit.

A recent regional targeting program has identified a series of zinc targets throughout the Otavi Mountain Land. Several zinc prospects, such as Toggenburg and East Border, have been defined using high resolution data and will be a major part of Sabre's regional target testing program. Others, such as Rietfontein, Sinkhole and Uitsab, will require additional detailed data interpretation and field work before reconnaissance drilling can be planned.



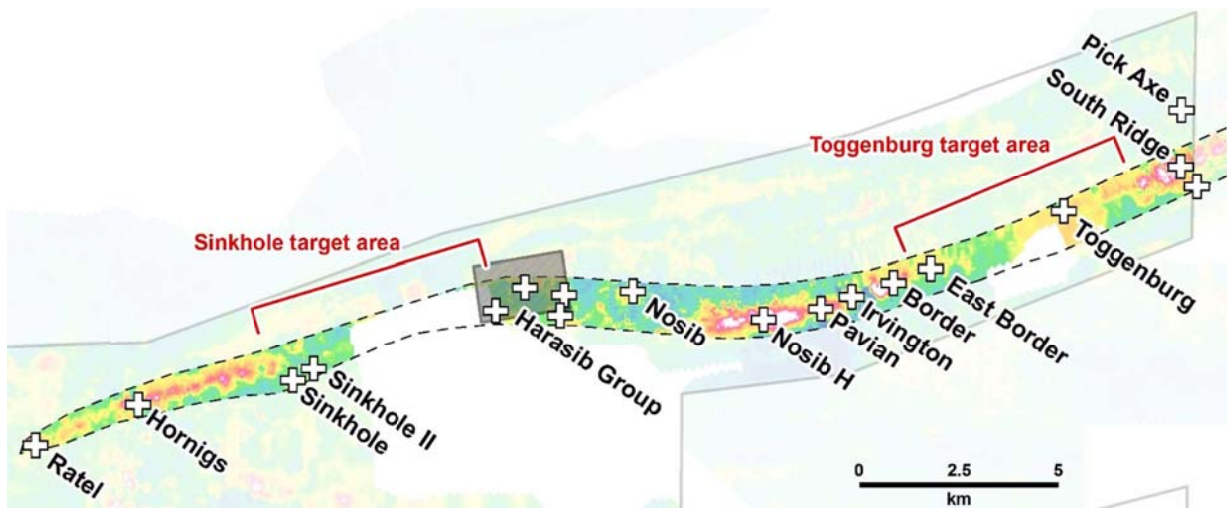
**Figure 1** – The Otavi Mountain Land Project, Namibia, showing Sabre’s main zinc prospects and deposits (black crosses) amid the main deposits of the region (white crosses). The dashed black line is the Pavian Trend of zinc-lead deposits and geochemical anomalism.

## ZINC-LEAD-SILVER TARGET TESTING TO COMMENCE

A series of work programs have been designed along the Pavian zinc-lead-silver mineralised zone and are due to commence in the current quarter. These programs are aimed at discovery of new zinc and lead deposits, either as extensions to the Border system or as new deposits. Further work programs planned in the Border area will include:

- **Reconnaissance drilling of the Toggenburg Plains** to test conceptual and geochemical targets defined beneath soil-covered areas between Border and South Ridge (Figure 2). Toggenburg represents a significant size (+2km long) Zn-Pb target under cover with anomalous soil geochemistry and a subdued topographic signature.
- **Infill drilling of Border.** The main objective of the additional drilling will be to upgrade key higher grade portions of the mineralisation to Indicated Resource category.
- **Reconnaissance drilling east of Border** along strike to test for extensions to the deposit
- **Update the Scoping study** assumptions and expand the study to include logistics and a review of plant design.
- **Regional soil geochemistry** is currently underway over the Sinkhole target area, in the central western part of the Pavian Trend (Figure 2). Like the Toggenburg Plains, the Sinkhole area is under cover and may conceal buried zinc-lead mineralisation.

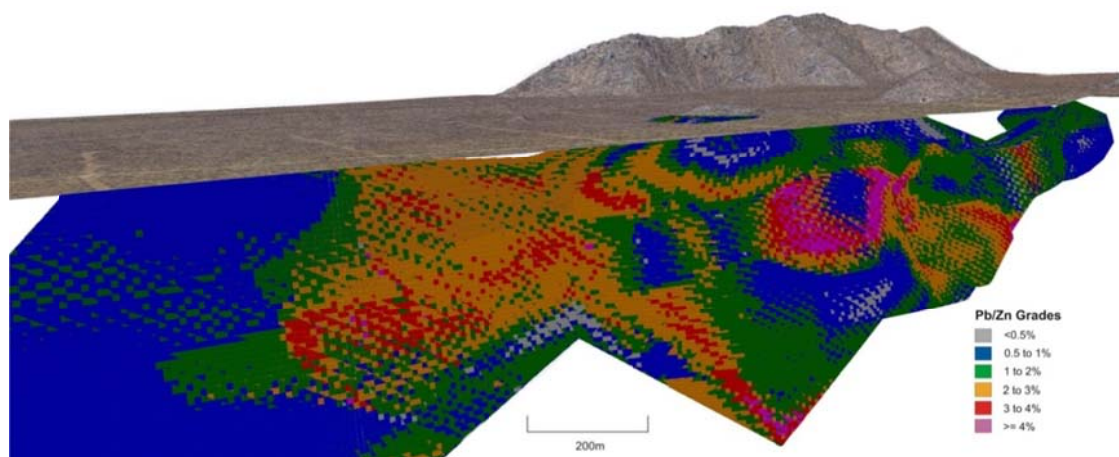
A program of scout drilling at Toggenburg Plains and infill drilling at Border will commence as soon as logistical planning is completed and stakeholder approval has been received.



**Figure 2** – The Pavian Trend, extending over 30 km and showing many deposits and prospects. Soil geochemistry for Zn+Pb illustrates the extent of the trend, with warmer colours representing high values.

## BORDER ZINC-LEAD-SILVER RESOURCE BEING REVISED AND UPDATED TO JORC 2012 STANDARD

One facet of Sabre's renewed zinc push is the completion of a review of the Border deposit and associated revision of the resource to the new JORC 2012 standard. Since the release of the previous resource (ASX release 24 January 2012), additional density information has become available, which is being incorporated into the model and a revised resource statement is near finalisation. Metallurgical work conducted on the mineralisation at Border indicated it was amenable to upgrading via dense media separation techniques and responded well to subsequent flotation test work.



**Figure 3** – Oblique view of the resource block model for the Border Zn-Pb-Ag deposit

The Border Zn-Pb-Ag deposit (Figure 3) is one of a series of zinc-lead deposits located along Sabre's 20 km long Pavian Trend in northern Namibia (Figure 2). The revised Border resource is a key component of a strategy of identifying and developing multiple Zn-Pb-Ag deposits feeding a centrally located processing plant on the Pavian Trend.

## SUMMARY

High priority exploration targets at Toggenburg Plains, East Border and South Ridge on the 20km of the Pavian Trend together with the Border Deposit potentially constitute a camp of zinc-lead deposits which can be easily mined and treated through a centrally located mineral separation plant.

A resurgence in the prices of zinc and lead, combined with their long term demand fundamentals support the Company's intention to advance its zinc projects in the Otavi Mountain Land.

The Otavi Mountain Land project area has available water, power and rail links to port within 50 km. The project area has established communications infrastructure (including roads, telephone, mobile broadband and mobile phone reception) and a highly competent team of geologists in place at Sabre's nearby Kombat base camp to execute the program.

The excellent potential for discovery of multiple Border style Zn-Pb-Ag deposits along the Pavian Trend, together with their simple mining and processing characteristics, represents an excellent opportunity for the company to advance to feasibility and mining.

### **For further information regarding the Company's activities, please contact:**

Paul Mazzone - Technical Director  
Dr Matthew Painter - General Manager - Exploration  
Phone (08) 9481 7833

### **Or consult our website:**

[www.sabresources.com](http://www.sabresources.com)

#### **Competent Persons Declarations**

The information in this report that relates to Exploration Results is based on information compiled by Dr Matthew Painter of Sabre Resources Ltd, who is a member of The Australian Institute of Geoscientists. Dr Painter is a full time employee of Sabre Resources and has sufficient experience that is relevant to the style of mineralisation and type of deposit under consideration and to the activity that he is undertaking to qualify as a Competent Person as defined in the 2012 Edition of the "Australian Code for Reporting of Exploration Results, Mineral Resource and Ore Reserves". Dr Painter consents to the inclusion in the report of the matters based on his information in the form and context in which it appears.

#### **Forward-Looking Statements**

This document may include forward-looking statements. Forward-looking statements include, but are not limited to, statements concerning Sabre Resources Limited's planned exploration programme and other statements that are not historical facts. When used in this document, the words such as "could," "plan," "estimate," "expect," "intend," "may", "potential," "should," and similar expressions are forward-looking statements. Although Sabre Resources Limited believes that its expectations reflected in these forward-looking statements are reasonable, such statements involve risks and uncertainties and no assurance can be given that actual results will be consistent with these forward-looking statements.