



ENERGY WORLD CORPORATION LTD.

9A Seaforth Crescent,
Seaforth NSW 2092, Australia.

Tel : (61 2) 9247 6888
Fax: (61 2) 9247 6100

23 October 2014

The Listing Manager
Company Announcement Platform
ASX Limited

Total no. of page(s): 1 + 12

Dear Sirs,

“TURBINE AND GENERATOR HAVE LANDED” 650MW COMBINED CYCLE PAGBILAO POWER STATION – UPDATE

We are pleased to advise Shareholders that the first Siemens manufactured and supplied 200MW gas fired power plant and generator have now arrived on site at Pagbilao. We have attached to this announcement pictures of these units arriving at site. The second 200MW gas turbine and generator is expected to arrive on site in around 3 weeks.

As previously advised, we have been requested and encouraged by the Department of Energy (DOE) in Philippines to bring these units into commercial operation as soon as we can and we are therefore working diligently to meet the request.

Under the accelerated programme, we hope to have the first 200MW unit ready for generating power into the Luzon grid by early next year 2015 and the second 200MW unit to come on line shortly thereafter.

By achieving this programme, we will meet the DOE's request to bring into commercial operation an additional 400MW of power capacity to the Luzon grid by summer of 2015, thus addressing the foreseen shortfall in Luzon's power generation capacity. Our planning is for the additional 250MW steam turbine package to be phased into this development by year end 2015 / early 2016.

Yours faithfully,
For and on behalf of
ENERGY WORLD CORPORATION LTD.

Brian Allen
Executive Director

REGISTERED OFFICE ADDRESS

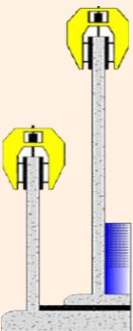
9A Seaforth Crescent, Seaforth NSW 2092, Australia.
Tel : (61 2) 9247 6888 Fax: (61 2) 9247 6100
A.C.N. 009 124 994



ENERGY WORLD CORPORATION LIMITED



Pagbilao 650MW CCGT Power Station
Unloading of First 200MW Gas Turbine and Generator
23rd October 2014



650MW CCGT Pagbilao Power Station



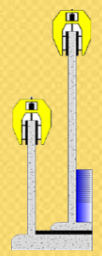
Unloading of First 200MW Gas Turbine and Generator



650MW CCGT Pagbilao Power Station



Unloading of First 200MW Gas Turbine and Generator

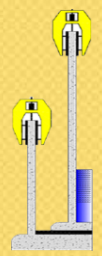




650MW CCGT Pagbilao Power Station



Unloading of First 200MW Gas Turbine and Generator

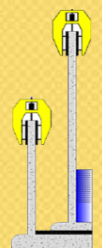




650MW CCGT Pagbilao Power Station



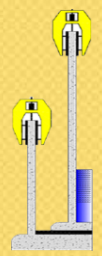
Unloading of First 200MW Gas Turbine and Generator



650MW CCGT Pagbilao Power Station



Unloading of First 200MW Gas Turbine and Generator

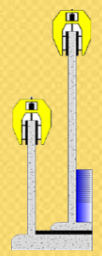




650MW CCGT Pagbilao Power Station



Unloading of First 200MW Gas Turbine and Generator

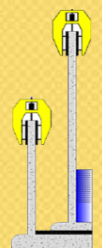




650MW CCGT Pagbilao Power Station



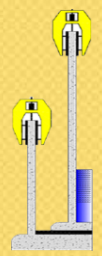
Unloading of First 200MW Gas Turbine and Generator



650MW CCGT Pagbilao Power Station



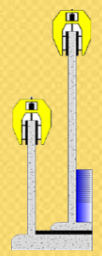
Unloading of First 200MW Gas Turbine and Generator



650MW CCGT Pagbilao Power Station



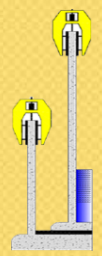
Unloading of First 200MW Gas Turbine and Generator



650MW CCGT Pagbilao Power Station



Unloading of First 200MW Gas Turbine and Generator





ENERGY WORLD CORPORATION LIMITED

Suite 3408, 34th Floor, Sun Hung Kai Centre,
30 Harbour Road,
Hong Kong.

Tel : (852) 2528 0082

Fax : (852) 2528 0966