

## QUARTERLY ACTIVITY REPORT FOR THE PERIOD ENDING 30 SEPTEMBER 2014

### HIGHLIGHTS

- ❖ Due diligence completed on the Triumph Gold Project, Eastern Goldfields WA, culminating in the signing of a farm-in and joint venture agreement – see ASX release 15 October 2014.
- ❖ Project investigations continue for further farm-in / acquisition opportunities.
- ❖ Continued investigations and discussions with numerous third parties with regard to asset commercialisation.

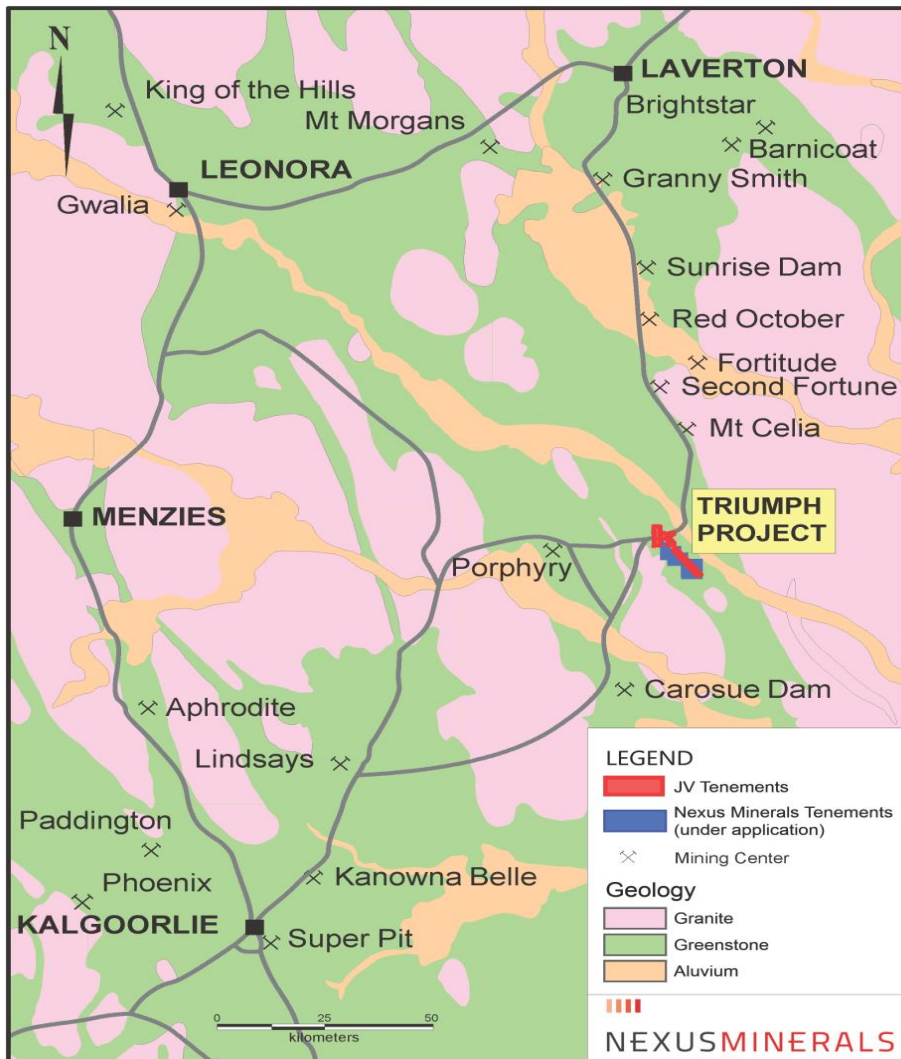
The Board of **Nexus Minerals Limited** (ASX:NXM) (“Nexus” or “the Company”) is pleased to provide the following update on progress made during the September quarter of 2014 (“the Quarter”).

Detailed due diligence on the Triumph Gold Project during the quarter culminated in the farm-in and joint venture agreement being finalised and the agreement announced on 15 October 2014 (see ASX release).

The Triumph Project is located in the Eastern Goldfields of Western Australia, some 145km northeast of Kalgoorlie (figures 1 and 2).



Figure 1. Triumph Project location, Western Australia.



**Figure 2. Triumph Project location, Eastern Goldfields.**

The Triumph Project tenements provide a semi-continuous strike length of historic gold mine workings and shafts over a mineralised structure of 16km. The joint venture tenement package covers approximately 24km<sup>2</sup>.

The Triumph Project area covers part of a highly deformed greenstone sequence intruded by narrow porphyry units and characterised by sheared banded iron units, sediments and mafic rocks extensively sheared. A feature of the project area is the extensive strike of the mineralised shear zone and multiple quartz veins which have been mined for gold at the turn of the century by underground methods.

The area was principally mined between 1897 and 1921, with recorded production of 8,100t @ 24.5g/t gold from one section of the workings and 22,168t @ 46.4g/t gold from another.

A number of other potential project opportunities were evaluated, principally for gold and copper in Western Australia, with site visits and extensive due diligence conducted by management. The Company continues to conduct due diligence on prospective assets as they are identified.

## About Nexus

Nexus Minerals is a well-funded, diversified resources company with a portfolio of projects in Western Australia. With a capable and well-credentialed Board, assisted by an experienced management team, the Company is well placed to capitalise on opportunities as they emerge in the resource sector.

## Ends

**Enquiries**      **Mr Andy Tudor, Chief Executive Office**  
                      **Mr Paul Boyatzis, Non-Executive Chairman**

**Contact**        **Phone:    08 9481 1749**  
                      **Fax:        08 9481 1756**

**Website**        **[www.nexus-minerals.com](http://www.nexus-minerals.com)**

*The information in this report that relates to Exploration Results and Mineral Resources is based on information compiled or reviewed by Mr Andy Tudor, who is a Member of the Australian Institute of Mining and Metallurgy. Mr Tudor is a full-time employee of Nexus Minerals Limited. Mr Tudor has sufficient experience which is relevant to the style of mineralisation and type of deposit under consideration and to the activity for which he is undertaking to qualify as a Competent Person as defined in the 2012 Edition of the "Australian Code for Reporting of Exploration Results, Mineral Resources and Ore Reserves". The exploration results are available to be viewed on the Company website [www.nexus-minerals.com](http://www.nexus-minerals.com). The Company confirms it is not aware of any new information that materially affects the information included in the original announcement. The Company confirms that the form and context in which the Competent Person's findings are present have not been materially modified from the original announcements.*

*Mr Tudor consents to the inclusion in the reports of the matters based on his information in the form and context in which it appears.*

**SUMMARY OF NEXUS MINERALS LIMITED TENEMENTS**

AUSTRALIA	Interest at beginning of Quarter	Interest at end of Quarter
Yandicoogina South (Iron)		
E47/1904	100% Nexus Minerals Ltd	100% Nexus Minerals Ltd
E47/2432		
E47/2473		
E47/2474		
Hancock Range		
E47/2110	100% Nexus Minerals Ltd	100% Nexus Minerals Ltd
Mount Goldsworthy		
E45/3376	100% Nexus Minerals Ltd	100% Nexus Minerals Ltd
Gardiner Range(Gold/REE)		
E80/4299	100% Nexus Minerals Australia Pty Ltd (wholly-owned subsidiary of Nexus Minerals)	100% Nexus Minerals Australia Pty Ltd
E80/4300		
E80/4402		
E80/4403		
E80/4848 - Application	100% Nexus Minerals Australia Pty Ltd	Nil
E80/4894 - Application	Nil	100% Nexus Minerals Ltd
E80/4895 - Application		
Mt Celia		
P39/5484 - Application	100% Nexus Minerals Ltd	100% Nexus Minerals Ltd
P39/5485 - Application		
P39/5486 - Application		
Patricia		
E31/1068 - Application	100% Nexus Minerals Ltd	Nil
P31/2053 - Application		
E31/1072 - Application		
P31/2056 - Application		