

Quarterly Activities Report: September 2014



Date: 31 Oct. 2014

ASX Code: KGM

www.kalnorthgoldmines.com

Shares on issue: 274.8M ordinary shares

Share Price: \$0.025

Market Capitalization: \$ 6.9 M

Projects

Eastern Goldfields-Western Australia

- Kurnalpi (100%)
- Lindsays (100%)
- Mt Jewell (100%)
- Kalpini (100%)
- Spargoville (80%)

Directors

Lijun Yang: Executive Director &
Company Secretary

Jiajun Hu: Non-executive Director

Yuanguang Yang: Non-executive Director

Principal Office

224 Dugan Street
Kalgoorlie, WA 6430
+61 8 9021 8327

Mailing Address

224 Dugan Street
Kalgoorlie, WA 6430

During the September Quarter, the board of KalNorth Gold Mines Limited ("KalNorth" or the "Company", ASX: KGM) maintained its focus on the goals stated in the June 2014 Quarter with key emphasis on elimination of the company's level of debt. The board has commenced and is continuing discussions with key loan holders to resolve the secured and unsecured loans. The board secured a converting loan of \$350K with Gold Fresh Limited to provide urgent working capital and achieved partial conversion to equity of the outstanding loan interest payable to South Victory Global Limited. Concurrent with this activity the company continued its strategy to maintain and expand prospecting activities over most of the project area and progress discussions with a preferred operator to conduct a tribute mining operation at Lindsay's project.

Quarterly Summary:

- Maintained reduced operating and overhead costs.
- Converting Loan Agreement executed with Gold Fresh Limited providing the company with a short term loan of \$350,000.
- Achieved a partial conversion of the outstanding loan interest payable to South Victory Global Limited by conversion to equity at 1 cent per share and the issue of 35,842,004 shares.
- Maintained and expanded prospecting activities by third parties over tenements at Kurnalpi, Lindsay's and Kalpini.
- Progressed discussions with a preferred operator to conduct a tribute mining operation at Lindsay's.
- Continued to focus on reducing operating costs with the ongoing rationalization of the tenement holding and surrender of non-core tenure
- Changes to the Board and Company Secretary.

EXPLORATION REPORT

KalNorth holds a portfolio of exploration projects in close proximity to Kalgoorlie in the Eastern Goldfields region of Western Australia.

The main focus of exploration within the company given its current extenuating financial circumstances is to maintain the tenement portfolio to ensure individual tenements meet the statutory compliance obligations. The tenement portfolio consists of some 117 licenses in five project areas, each of which host a gold mineral resource and are considered prospective for economic gold mineralization.

Given the tight financial condition of the company and the strict focus on reducing overheads the company continues to seek alternative opportunities to explore or work the tenements to ensure statutory compliance. A key initiative has been through the prospecting activities of third party bona fide prospectors. This work has been ongoing over several years on a smaller scale on selected tenements at the Kurnalpi Project, but this activity has been increased substantially over the past 14 months at Kurnalpi, but also extending to Lindsay's and more recently at Kalpini.

All prospectors operate under agreement with the company with adherence to statutory obligations to work the tenements via a Prospecting Program of Works approved by the Department of Mines and Petroleum. Regular inspections are made by the company to view the prospecting activities and to ensure there is no unauthorized clearing of land and that rehabilitation obligations are complied with. Gold won by the prospectors is reported regularly to the company, with 10% being retained and recorded by KalNorth. Since September 2013 some 154 ounces of gold has been recovered from prospecting on the company's tenements, primarily from the Kurnalpi project.

Kurnalpi Project (KGM 100%)

Prospecting activities continued with work being undertaken by 5 prospecting parties under agreement with the company. This prospecting activity currently covers some 75% of the Kurnalpi tenements and assists the company with adding to the geological knowledge, meeting the statutory expenditure commitment and delivering a small but nonetheless important source of income via gold nuggets.

Lindsay's Project (KGM 100%)

The Lindsay's Project contains the Lindsay's mine site which remains on care and maintenance since mining was suspended on Aug 8 2013. As previously reported the company continues to focus on recommencement of mining at Lindsay's via a Tribute Mining-Right to Mine arrangement and during the quarter the board approved to commence further negotiation with a local operator whom has recent experience in this style of operation. Further details of the arrangement need to be clarified but the current option being considered would have the tribute operator re-establish mining at Lindsay's and to fund mine to mill, with the company sharing in the profit after costs. The mining could be a combined open pit and underground operation depending on favourable optimisations. The company would retain ownership of the tenements and will fund and manage the exploration.

Kalpini Project (KGM 100%)

The project is located midway between Lindsay's and Kurnalpi and consists of three tenements, one of which contains the Kalpini gold resource. No field work was undertaken during the quarter however agreements for prospecting on two tenements were executed that will see prospecting commence during the December quarter. The company is also considering the option to realize value from the Kalpini gold resource through tribute mining which may have operational synergies given the proximity and accessibility to Lindsay's.

Mt Jewell Project (KGM 100%)

The Mt Jewell Project is the most westerly of the company's projects and the largest of the five projects by area. The project was acquired from Pioneer Resources Limited in early 2012 and a final instalment payment of \$1.1Million is due to be paid on or before March 8 2015. No fieldwork was undertaken during the quarter.

Spargoville Project (KGM 80%, Mithril 20% and earning to 80 %)

The Spargoville Project, located some 45km to the south east of Kalgoorlie is subject to a farm in and Joint Venture with Mithril Resources Limited (ASX:MTH) where Mithril has earned an initial 20% interest having completed expenditure of \$0.32M. Mithril can earn an additional 60% interest by spending a further \$1.68M by no later than 17 May 2017 (total expenditure of \$2million over 4 years for an 80% interest. During the quarter Mithril reported that the only field based activity was rehabilitation of drill sites from the June 2014 drill program.

Exploration Outlook

Re commencement of gold exploration over the four wholly owned projects by the company is dependent on firstly resolving the financial constraints which have severely impacted the company from undertaking any meaningful generative exploration over the past 12 months. The company is hopeful that some of these constraints will be relaxed in the coming quarter and will allow some value adding exploration to commence. In the interim much of the tenement package will be continued to be worked by prospectors to assist in maintaining statutory expenditure obligations. The company will continue to assess the prospectivity of the tenement portfolio for large gold systems and lesser ranked tenements will either be attempted to be divested or surrendered.

CORPORATE REPORT

During the quarter the board continued to focus its attention on achieving the goals that were established and announced in the previous quarter which are reiterated below:

- Eliminate the company's current level of debt
- Substantially reduce the company's overheads
- Progress opportunities with third parties to develop its existing projects, and
- Secure the future direction of the company by establishing an ongoing revenue stream.

The company's level of debt is the major issue that needs resolution to enable it to regain financial independence and to then recommence exploration to add value its portfolio of tenements. During the quarter positive progress was made with one of its secured lenders, South Victory Global Limited ("South Victory") where on 28 August 2014 the parties agreed that part of the outstanding interest owed on this loan would be converted to equity at AUD 0.01 per share through the issue of 35,842,004 shares. On 2 September 2014 South Victory announced that it had become a substantial shareholder of the company. The Board continues to discuss with its other key lenders in order to seek a satisfactory outcome to eliminate the level of debt.

During the quarter the company also negotiated and executed a converting loan agreement with Gold Fresh Limited ("GoldFresh") a Hong Kong based investment company to provide urgently needed funds for working capital. GoldFresh provided a \$350,000 loan with a term of 18 Months and at an interest rate of 8%.

Subsequent to the release of the Company's Financial Report for the year ended 30 June 2014 the Company on 8 October 2014 requested in accordance with Listing Rule 17.2 the voluntary suspension from quotation of the

Company's securities. The Board considers this to be a prudent step to allow it time to undertake the appropriate steps to strengthen its balance sheet by dealing with the approximately \$5.25M of interest bearing Liabilities of which \$4.9M will become payable at the end of November 2014, raise new equity capital and complete the sale of a non-core asset. Since suspension, the Board has been actively progressing discussions with its key lenders in order to seek a resolution of the loans, and have also well advanced negotiations with a third party for the sale of a non-core asset.

Total expenditure for the September quarter amounted to \$340,000 of which \$157,000 was attributable to exploration and evaluation, compared to a total expenditure of \$321,000 in the June quarter. The company's principal debt to loan holders remains unchanged.

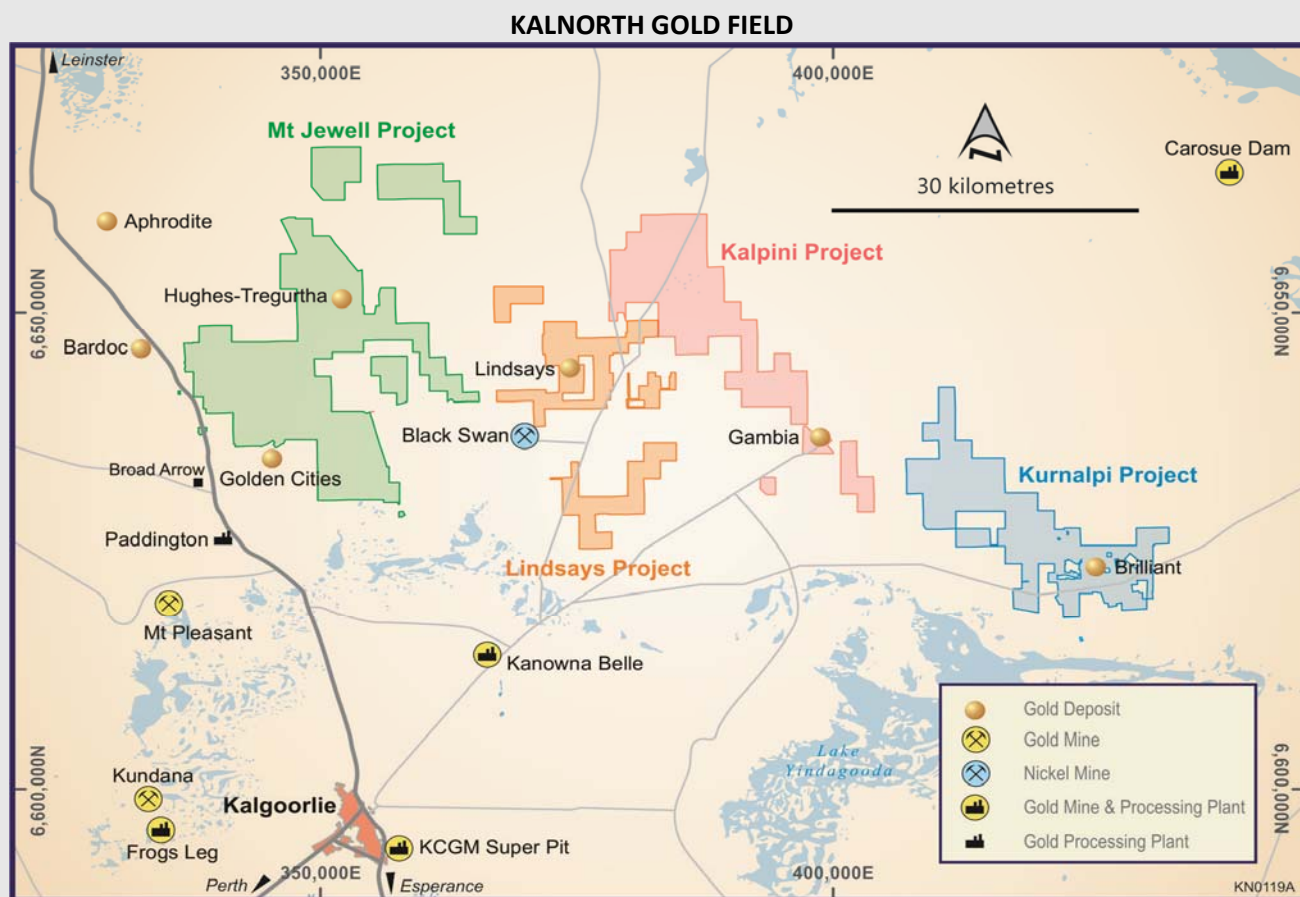
In addition the company has a \$1.1million final deferred payment due to be paid to Pioneer Resources Limited by 6 March 2015.

The cash balance at the end of the quarter was \$139,000

Board of Directors

On 28 August 2014 Mr. Brendan Connell announced his resignation as Non-Executive Director of the Board, and was immediately replaced by Mr. Yuanguang Yang. Mr. Yang is an authorized officer of South Victory Global Limited, a secured creditor of KalNorth.

On 29 August 2014 Mr. James Church, Company Secretary, announced his resignation, effective immediately. In the interim this role is currently managed by Mr. Lijun Yang until both a suitable candidate can be appointed and the company resolves its finances.



Location map of KalNorth projects showing roads and local processing plants

About KalNorth Gold Mines Limited

KalNorth Gold Mines Limited (ASX Code: KGM) is a gold mining company based in Kalgoorlie, Western Australia (WA). The Company's core suite of tenements, all 100% owned, are located some 50 to 80km north-east of the world renowned gold mining town of Kalgoorlie, WA. They cover approx. 1,200km² of highly prospective land. There are currently four gold projects each with resources within the KGM holding: Mount Jewell, Lindsays, Kalpini and Kurnalpi (collectively the KalNorth Field). Spargoville, south of Kalgoorlie, is a JV project with Mithril Resources Limited.

.KalNorth transitioned to gold producer in January 2013 when it brought the Lindsay's Project into production. KalNorth mined Lindsay's for 7 months before ceasing mining in August 2013. KalNorth is currently exploring opportunities to develop the Lindsay's as an Underground Mine focussing upon the Parrot Feathers lode beneath the Stage2 open pit.

Competent Person Statement-Exploration Results and Mineral Resources

Information in this announcement that relates to exploration results is based on information compiled and reviewed by Mr Wade Johnson who is the Exploration Manager of KalNorth. Mr Johnson is a member of the Australian Institute of Geoscientists and has sufficient experience which is relevant to the style of mineralisation and type of deposit under consideration and the activity which he is undertaking to qualify as a Competent Person as defined in the 2012 Edition of the "Australasian Code for Reporting of Exploration Results, Mineral Resources and Ore Reserves". Mr Johnson consents to the inclusion in the document of the information in the form and context in which it appears.

Tenement Holdings and Movements

Schedule of Mining Tenements and Beneficial Interest

Held as at the end of the September 2014 Quarter

| TENEMENT NUMBER | STATUS | LOCALITY | KALNORTH PROJECT | HOLDER | INTEREST % |
|--------------------|--------|--------------------|---------------------|-----------------------------|---------------|
| M27/485 | LIVE | KALPINI | KALPINI | KALNORTH GOLD MINES LIMITED | 100 |
| E27/412 | LIVE | KALPINI HILL | KALPINI | KALNORTH GOLD MINES LIMITED | 100 |
| E27/411 | LIVE | MAGGIES DAM | KALPINI | KALNORTH GOLD MINES LIMITED | 100 |
| E28/2015 | LIVE | COLOUR DAM | KURNALPI | KALNORTH GOLD MINES LIMITED | 100 |
| M28/0092 | LIVE | KURNALPI | KURNALPI | SHANNON RESOURCES PTY LTD | 100 |
| M28/0072 | LIVE | KURNALPI | KURNALPI | SHANNON RESOURCES PTY LTD | 100 |
| P28/1190 | LIVE | KURNALPI | KURNALPI | KALNORTH GOLD MINES LIMITED | 100 |
| P28/1191 | LIVE | KURNALPI | KURNALPI | KALNORTH GOLD MINES LIMITED | 100 |
| M28/0007 | LIVE | KURNALPI | KURNALPI | SHANNON RESOURCES PTY LTD | 100 |
| P28/1228 | LIVE | KURNALPI | KURNALPI | LUSITAN PROSPECTING PTY LTD | 100 |
| P28/1224 | LIVE | KURNALPI | KURNALPI | LUSITAN PROSPECTING PTY LTD | 100 |
| P28/1225 | LIVE | KURNALPI | KURNALPI | LUSITAN PROSPECTING PTY LTD | 100 |
| P28/1226 | LIVE | KURNALPI | KURNALPI | LUSITAN PROSPECTING PTY LTD | 100 |
| P28/1227 | LIVE | KURNALPI | KURNALPI | LUSITAN PROSPECTING PTY LTD | 100 |
| P28/1229 | LIVE | KURNALPI | KURNALPI | LUSITAN PROSPECTING PTY LTD | 100 |
| P28/1230 | LIVE | KURNALPI | KURNALPI | LUSITAN PROSPECTING PTY LTD | 100 |
| P28/1231 | LIVE | KURNALPI | KURNALPI | LUSITAN PROSPECTING PTY LTD | 100 |
| M28/0084 | LIVE | KURNALPI | KURNALPI | SHANNON RESOURCES PTY LTD | 100 |
| E28/2088 | LIVE | DAVIES DAM | KURNALPI | KALNORTH GOLD MINES LIMITED | 100 |
| E28/2014 | LIVE | MOOREE HILL | KURNALPI | KALNORTH GOLD MINES LIMITED | 100 |
| E28/2226 | LIVE | 6 MILE SOUTH | KURNALPI | SHANNON RESOURCES PTY LTD | 100 |
| M28/374 | LIVE | KURNALPI 1 | KURNALPI | SHANNON RESOURCES PTY LTD | 100 |
| M28/375 | LIVE | KURNALPI 2 | KURNALPI | SHANNON RESOURCES PTY LTD | 100 |
| M28/0090 | LIVE | KURNALPI | KURNALPI | SHANNON RESOURCES PTY LTD | 100 |
| P28/1180 | LIVE | KURNALPI | KURNALPI | KALNORTH GOLD MINES LIMITED | 100 |
| P28/1154 | LIVE | RICHES FIND | KURNALPI | KALNORTH GOLD MINES LIMITED | 100 |
| P28/1155 | LIVE | KURNALPI | KURNALPI | KALNORTH GOLD MINES LIMITED | 100 |
| P28/1156 | LIVE | KURNALPI | KURNALPI | KALNORTH GOLD MINES LIMITED | 100 |
| P28/1157 | LIVE | KURNALPI | KURNALPI | KALNORTH GOLD MINES LIMITED | 100 |
| P28/1184 | LIVE | SUCCESS | KURNALPI | KALNORTH GOLD MINES LIMITED | 100 |
| M28/0089 | LIVE | KURNALPI | KURNALPI | SHANNON RESOURCES PTY LTD | 100 |
| M28/0076 | LIVE | SCOTTISH LASS WELL | KURNALPI | SHANNON RESOURCES PTY LTD | 100 |
| E28/2153 | LIVE | 5 MILE DAM | KURNALPI | KALNORTH GOLD MINES LIMITED | 100 |
| M28/0066 | LIVE | KURNALPI | KURNALPI | SHANNON RESOURCES PTY LTD | 100 |
| M28/0113 | LIVE | KURNALPI | KURNALPI | SHANNON RESOURCES PTY LTD | 100 |
| P28/1187 | LIVE | COLOUR DAM | KURNALPI | KALNORTH GOLD MINES LIMITED | 100 |
| P28/1186 | LIVE | PURPLE PATCH | KURNALPI | KALNORTH GOLD MINES LIMITED | 100 |
| P28/1097 | LIVE | KURNALPI | KURNALPI | SHANNON RESOURCES PTY LTD | 100 |
| P28/1100 | LIVE | KURNALPI | KURNALPI | SHANNON RESOURCES PTY LTD | 100 |

| TENEMENT NUMBER | STATUS | LOCALITY | KALNORTH PROJECT | HOLDER | INTEREST % |
|--------------------|--------|----------------|---------------------|-----------------------------|---------------|
| P28/1101 | LIVE | KURNALPI | KURNALPI | SHANNON RESOURCES PTY LTD | 100 |
| P28/1102 | LIVE | KURNALPI | KURNALPI | SHANNON RESOURCES PTY LTD | 100 |
| P28/1103 | LIVE | KURNALPI | KURNALPI | SHANNON RESOURCES PTY LTD | 100 |
| P28/1104 | LIVE | KURNALPI | KURNALPI | SHANNON RESOURCES PTY LTD | 100 |
| P28/1105 | LIVE | KURNALPI | KURNALPI | SHANNON RESOURCES PTY LTD | 100 |
| P28/1106 | LIVE | KURNALPI | KURNALPI | SHANNON RESOURCES PTY LTD | 100 |
| P28/1107 | LIVE | KURNALPI | KURNALPI | SHANNON RESOURCES PTY LTD | 100 |
| P28/1108 | LIVE | KURNALPI | KURNALPI | SHANNON RESOURCES PTY LTD | 100 |
| P28/1111 | LIVE | KURNALPI | KURNALPI | SHANNON RESOURCES PTY LTD | 100 |
| P28/1112 | LIVE | KURNALPI | KURNALPI | SHANNON RESOURCES PTY LTD | 100 |
| P28/1113 | LIVE | KURNAPLI | KURNALPI | SHANNON RESOURCES PTY LTD | 100 |
| P28/1114 | LIVE | KURNALPI | KURNALPI | SHANNON RESOURCES PTY LTD | 100 |
| P28/1115 | LIVE | KURNALPI | KURNALPI | SHANNON RESOURCES PTY LTD | 100 |
| P28/1116 | LIVE | KURNALPI | KURNALPI | SHANNON RESOURCES PTY LTD | 100 |
| P28/1118 | LIVE | KURNALPI | KURNALPI | SHANNON RESOURCES PTY LTD | 100 |
| P28/1119 | LIVE | KURNALPI | KURNALPI | SHANNON RESOURCES PTY LTD | 100 |
| P28/1125 | LIVE | KURNALPI 2 | KURNALPI | SHANNON RESOURCES PTY LTD | 100 |
| P28/1126 | LIVE | KURNALPI 3 | KURNALPI | SHANNON RESOURCES PTY LTD | 100 |
| E28/2256 | LIVE | LAPAGE HILL | KURNALPI | SHANNON RESOURCES PTY LTD | 100 |
| P28/1254 | LIVE | KURNALPI | KURNALPI | SHANNON RESOURCES PTY LTD | 100 |
| P28/1255 | LIVE | KURNALPI | KURNALPI | SHANNON RESOURCES PTY LTD | 100 |
| E28/2056 | LIVE | 6 MILE DAM | KURNALPI | KALNORTH GOLD MINES LIMITED | 100 |
| E28/1477 | LIVE | KURNALPI | KURNALPI | SHANNON RESOURCES PTY LTD | 100 |
| P28/1117 | LIVE | KURNALPI | KURNALPI | SHANNON RESOURCES PTY LTD | 100 |
| M27/34 | LIVE | LINDSAY FIND | LINDSAYS FIND | KALNORTH GOLD MINES LIMITED | 100 |
| M27/169 | LIVE | LINDSAY FIND | LINDSAYS FIND | KALNORTH GOLD MINES LIMITED | 100 |
| P27/2111 | LIVE | LINDSAYS NORTH | LINDSAYS FIND | KALNORTH GOLD MINES LIMITED | 100 |
| P27/2058 | LIVE | GINDALBIE | LINDSAYS FIND | KALNORTH GOLD MINES LIMITED | 100 |
| P27/2084 | LIVE | GINDALBIE | LINDSAYS FIND | KALNORTH GOLD MINES LIMITED | 100 |
| P27/2083 | LIVE | GINDALBIE | LINDSAYS FIND | KALNORTH GOLD MINES LIMITED | 100 |
| P27/2094 | LIVE | LINDSAY DAM | LINDSAYS FIND | KALNORTH GOLD MINES LIMITED | 100 |
| M27/486 | LIVE | LINDSAYS | LINDSAYS FIND | KALNORTH GOLD MINES LIMITED | 100 |
| E24/146 | LIVE | RINGLOCK DAM | MOUNT JEWELL | KALNORTH GOLD MINES LIMITED | 100 |
| E24/149 | LIVE | GIMLET DAM | MOUNT JEWELL | KALNORTH GOLD MINES LIMITED | 100 |
| E24/171 | LIVE | MULGARRIE | MOUNT JEWELL | KALNORTH GOLD MINES LIMITED | 100 |
| E27/404 | LIVE | MT JEWELL | MOUNT JEWELL | KALNORTH GOLD MINES LIMITED | 100 |
| E27/422 | LIVE | MULGARRIE | MOUNT JEWELL | KALNORTH GOLD MINES LIMITED | 100 |
| P27/2017 | LIVE | MUGARRIE | MOUNT JEWELL | KALNORTH GOLD MINES LIMITED | 100 |
| P27/2018 | LIVE | MUGARRIE | MOUNT JEWELL | KALNORTH GOLD MINES LIMITED | 100 |
| P27/2019 | LIVE | MUGARRIE | MOUNT JEWELL | KALNORTH GOLD MINES LIMITED | 100 |

| TENEMENT NUMBER | STATUS | LOCALITY | KALNORTH PROJECT | HOLDER | INTEREST % |
|--------------------|---------|-------------------|---------------------|-----------------------------|---------------|
| E27/333 | LIVE | SILVER SWAN NORTH | MOUNT JEWELL | KALNORTH GOLD MINES LIMITED | 100 |
| P24/4654 | LIVE | BARDOC | MOUNT JEWELL | KALNORTH GOLD MINES LIMITED | 100 |
| P24/4655 | LIVE | BARDOC | MOUNT JEWELL | KALNORTH GOLD MINES LIMITED | 100 |
| E24/157 | LIVE | KANOWNA | MOUNT JEWELL | KALNORTH GOLD MINES LIMITED | 100 |
| P27/2019 | LIVE | MULGARRIE | MOUNT JEWELL | KALNORTH GOLD MINES LIMITED | 100 |
| P24/4233 | LIVE | SCOTIA EAST | MOUNT JEWELL | KALNORTH GOLD MINES LIMITED | 100 |
| P24/4234 | LIVE | SCOTIA EAST | MOUNT JEWELL | KALNORTH GOLD MINES LIMITED | 100 |
| E27/300 | LIVE | MT JEWELL | MOUNT JEWELL | KALNORTH GOLD MINES LIMITED | 100 |
| P15/5264 | LIVE | LOGANS FIND | SPARGOVILLE | KALNORTH GOLD MINES LIMITED | 100 |
| P15/4801 | LIVE | SPARGOVILLE | SPARGOVILLE | KALNORTH GOLD MINES LIMITED | 80 |
| P15/4802 | LIVE | SPARGOVILLE | SPARGOVILLE | KALNORTH GOLD MINES LIMITED | 80 |
| P15/5494 | LIVE | LOGANS | SPARGOVILLE | KALNORTH GOLD MINES LIMITED | 80 |
| E15/1174 | LIVE | SPARGOVILLE | SPARGOVILLE | KALNORTH GOLD MINES LIMITED | 80 |
| P15/5216 | LIVE | LOGANS | SPARGOVILLE | KALNORTH GOLD MINES LIMITED | 80 |
| M15/1806 | LIVE | LADY ALLISON | SPARGOVILLE | KALNORTH GOLD MINES LIMITED | 80 |
| P15/5236 | LIVE | LOGANS | SPARGOVILLE | KALNORTH GOLD MINES LIMITED | 80 |
| P15/5537 | LIVE | LARKINVILLE | SPARGOVILLE | KALNORTH GOLD MINES LIMITED | 80 |
| P15/5545 | LIVE | LOGANS | SPARGOVILLE | KALNORTH GOLD MINES LIMITED | 80 |
| P15/5546 | LIVE | LOGANS | SPARGOVILLE | KALNORTH GOLD MINES LIMITED | 80 |
| P15/5547 | LIVE | LOGANS | SPARGOVILLE | KALNORTH GOLD MINES LIMITED | 80 |
| P15/5548 | LIVE | LOGANS | SPARGOVILLE | KALNORTH GOLD MINES LIMITED | 80 |
| P15/5392 | LIVE | LARKINVILLE | SPARGOVILLE | KALNORTH GOLD MINES LIMITED | 80 |
| P15/5409 | LIVE | LARKINVILLE | SPARGOVILLE | KALNORTH GOLD MINES LIMITED | 80 |
| P24/4317 | LIVE | ROSE DAM EAST | MOUNT PLEASANT | KALNORTH GOLD MINES LIMITED | 100 |
| L27/82 | LIVE | LINDSAYS HAUL RD | LINDSAYS FIND | KALNORTH GOLD MINES LIMITED | 100 |
| L27/84 | LIVE | LINDSAYS HAUL RD | LINDSAYS FIND | KALNORTH GOLD MINES LIMITED | 100 |
| L27/88 | LIVE | KALPINI HAUL RD | KALPINI | KALNORTH GOLD MINES LIMITED | 100 |
| P27/2110 | LIVE | LINDSAYS SOUTH | LINDSAYS FIND | KALNORTH GOLD MINES LIMITED | 100 |
| M24/944 | PENDING | LIGNUM DAM | MOUNT JEWELL | KALNORTH GOLD MINES LIMITED | 100 |
| P 15/5766 | LIVE | NORTH DAM | SPARGOVILLE | KALNORTH GOLD MINES LIMITED | 80 |
| P 15/5772 | LIVE | LADY ALLISON | SPARGOVILLE | KALNORTH GOLD MINES LIMITED | 80 |
| E 27/506 | LIVE | GINDALBIE STATION | LINDSAYS FIND | KALNORTH GOLD MINES LIMITED | 100 |
| P 27/2162 | LIVE | LINDSAYS SOUTH | LINDSAYS FIND | KALNORTH GOLD MINES LIMITED | 100 |
| E 27/517 | LIVE | LINDSAYS EAST | LINDSAYS FIND | KALNORTH GOLD MINES LIMITED | 100 |
| E28/2303 | LIVE | CLAYPAN EAST | YINIDI WOOLSHED | KALNORTH GOLD MINES LIMITED | 100 |
| E28/2304 | LIVE | LAKE ROE | YINIDI WOOLSHED | KALNORTH GOLD MINES LIMITED | 100 |