

3 November 2014

Company Announcements
ASX Limited

Announcement – Investor Update Presentation

Please find attached an Investor Update Presentation from Metal Bank Limited.

Yours Sincerely



Sue-Ann Higgins
Company Secretary



INVESTOR UPDATE

NOVEMBER 2014

ASX: MBK

Disclaimer



Purpose of this document

This presentation has been prepared by Metal Bank Limited ("MBK") for general information purposes only using the information available to MBK at the time of publication.

No reliance

The information contained in this presentation is not investment, tax, accounting, legal or financial product advice and is not intended to be used as the basis for making any investment decision. The presentation has been prepared without taking into account the investment objectives, financial situation or particular needs of any particular person.

Exclusion of representations or warranties

No representation or warranty, express or implied, is made as to the fairness, accuracy, completeness or correctness of the information, opinions and conclusions contained in this presentation. To the maximum extent permitted by law, none of MBK's directors, employees or agents, nor any other person accepts any liability, including, without limitation, any liability arising out of fault or negligence, for any loss arising from the use of the information contained in this presentation. In particular, no representation or warranty, express or implied is given as to the accuracy, completeness or correctness, likelihood of achievement or reasonableness of any forecasts, prospects or returns contained in this presentation nor is any obligation assumed to update such information. Such forecasts, prospects or returns are by their nature subject to significant uncertainties and contingencies. Before making any investment decision, you should consider whether an investment is appropriate in light of your particular investment needs, objectives and financial circumstances. Past performance is no guarantee of future performance. You should seek professional advice from your accountant, financial adviser, stock broker, lawyer or other professional adviser before making any investment decision.

Forward looking information

Certain statements in this presentation constitute "forward looking information" that is based on expectations, estimates and projections as of the date of this presentation. These statements are subject to risks and uncertainties. The forward looking information should not be relied upon as representing the view of MBK after the date of this presentation. MBK has attempted to identify important factors that could cause actual actions, events or results to differ materially from those current expectations described in the forward looking information. However, there may be other factors that cause actions, events or results not to be as anticipated, estimated or intended and that could cause actual actions, events or results to differ materially from current expectations. There can be no assurance that the forward looking information will prove to be accurate, as actual results and future events could differ materially from those anticipated in such statements. Accordingly, the reader should not place undue reliance on the forward looking information. These factors are not intended to represent a complete list of the factors that could affect the forward looking information.

Events after the date of this document

Statements in this presentation are made only as of the date of this presentation unless otherwise stated and the information in this presentation remains subject to change without notice. MBK is not responsible for updating nor undertakes to update this presentation.

Competent Person Statement

The information in this document that relates to Exploration Results is based on information compiled or reviewed by Mr Tony Schreck, who is a Member of The Australasian Institute of Geoscientists. Mr Schreck is an employee of the Company. Mr Schreck has sufficient experience which is relevant to the style of mineralisation and type of deposit under consideration and to the activity which he is undertaking to qualify as a Competent Person as defined in the 2012 Edition of the 'Australasian Code for Reporting of Exploration Results, Mineral Resources and Ore Reserves'. Mr Schreck consents to the inclusion in the report of the matters based on his information in the form and context in which it applies.

About Metal Bank Limited

creating value



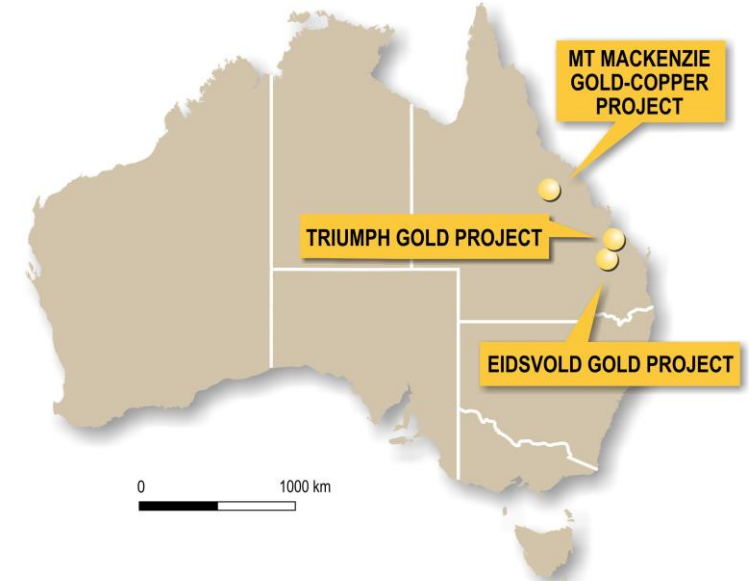
Our Aim

- ✓ To create shareholder value by building a successful gold and copper resource and development company

Our Strengths

- ✓ Major shareholders include a sophisticated investor group who founded Citadel Resources and grew it into a \$1.3B company
- ✓ Team with a successful track record
- ✓ Significant 'skin in the game'

Our Business is
Gold and Copper



About Metal Bank Limited

intrusion related gold systems – big prize



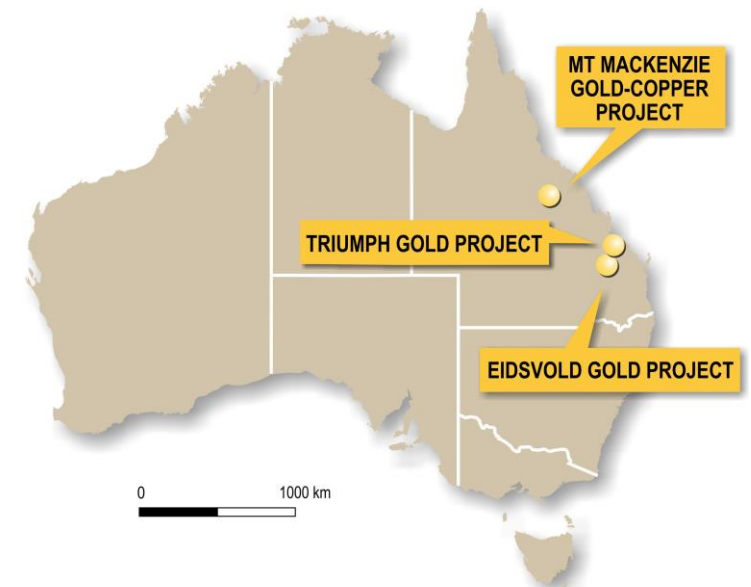
Our Projects

- ✓ Portfolio of large scale quality intrusion related gold ± copper projects
- ✓ Two drill discoveries already this year in Qld
 - Triumph Project – 9m @ 3.6 g/t Au from 114m
 - Eidsvold Project – 1m @ 17.5g/t Au and 2.5% Cu



Eidsvold high grade gold-copper mineralisation

Our Business is
Gold and Copper



Technical Management Team

discovery and development track record



Inés Scotland

- ✓ A founding shareholder and MD of Citadel through its massive growth during the discovery/development of the Jabal Sayid copper project in Saudi Arabia and acquisition by Equinox in early 2011 for \$1.3B.
- ✓ Over 20 years in the mining industry - Australia, Papua New Guinea, USA and the Middle East with Citadel, Ivanhoe and Rio Tinto companies including Comalco, Lihir, Kennecott Utah Copper.

Tony Schreck

- ✓ Credited with the grassroots discovery of the multi-million ounce Twin Bonanza gold system (Buccaneer and Old Pirate gold deposits) in the Northern Territory.
- ✓ Geologist with over 25 years of mineral exploration management and business development experience in Australia and Solomon Islands with North Flinders Mines, Normandy, Newmont, and Xstrata Copper.

Technical Consultants

- ✓ Brett Butlin – Former Chief Geologist at Citadel during the discovery and resource definition of the Jabal Sayid copper deposit in Saudi Arabia.
- ✓ Work closely with an extended network of consultants who are leaders in their field.

Simple Strategy

discovery, success, shareholder value

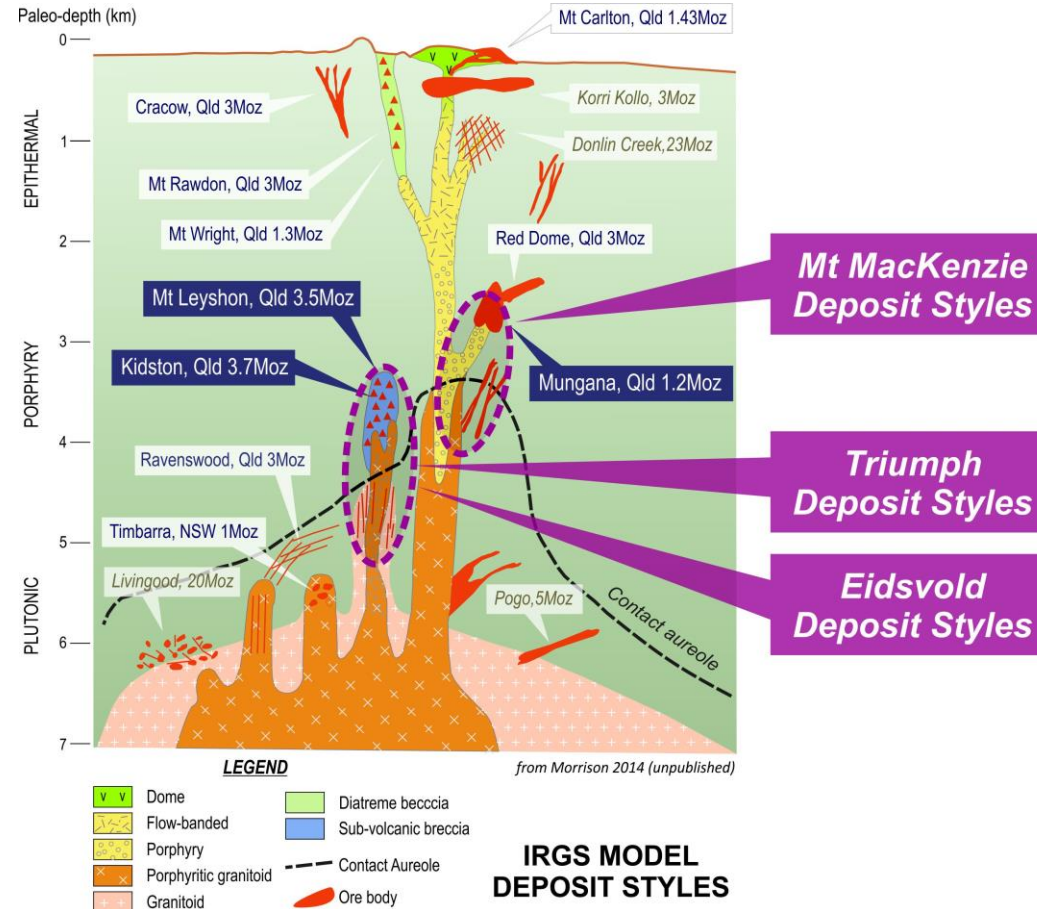
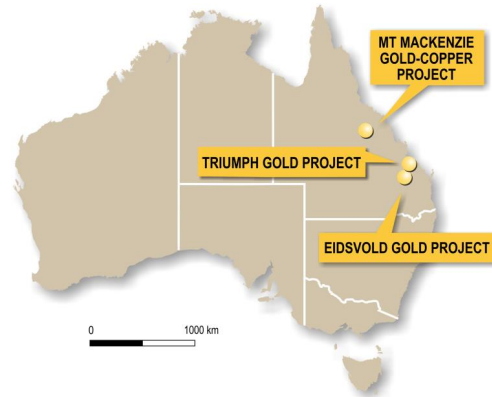


- ✓ Building a portfolio of quality intrusion related gold projects – potential for world class discovery
- ✓ Employing cutting edge exploration models and technology providing an advantage and allowing for greater predictability in our targeting
- ✓ Thinking big – looking at the big picture
- ✓ Having a team that has done it before
- ✓ Evaluating new opportunities in gold and copper



Intrusion Related Gold Systems

potential for a large prize



Corporate Overview

share structure



Metal Bank Limited ASX: MBK

shares on Issue 293M

options 76M

share price* \$0.005

cash at bank** \$0.42M

market cap \$1.5M

*as at 30 October 2014

**as at 30 September 2014

Directors / Management 10%

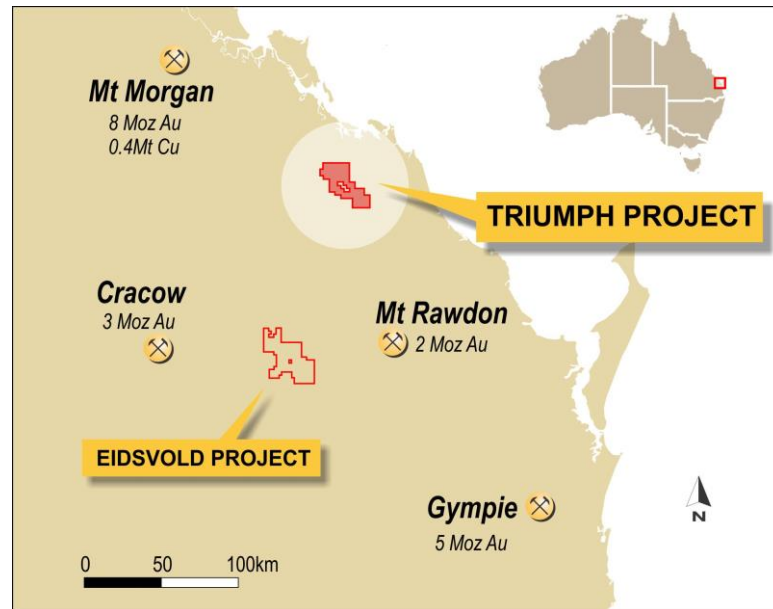
Macquarie Bank 4%

Top 20 shareholders 84%

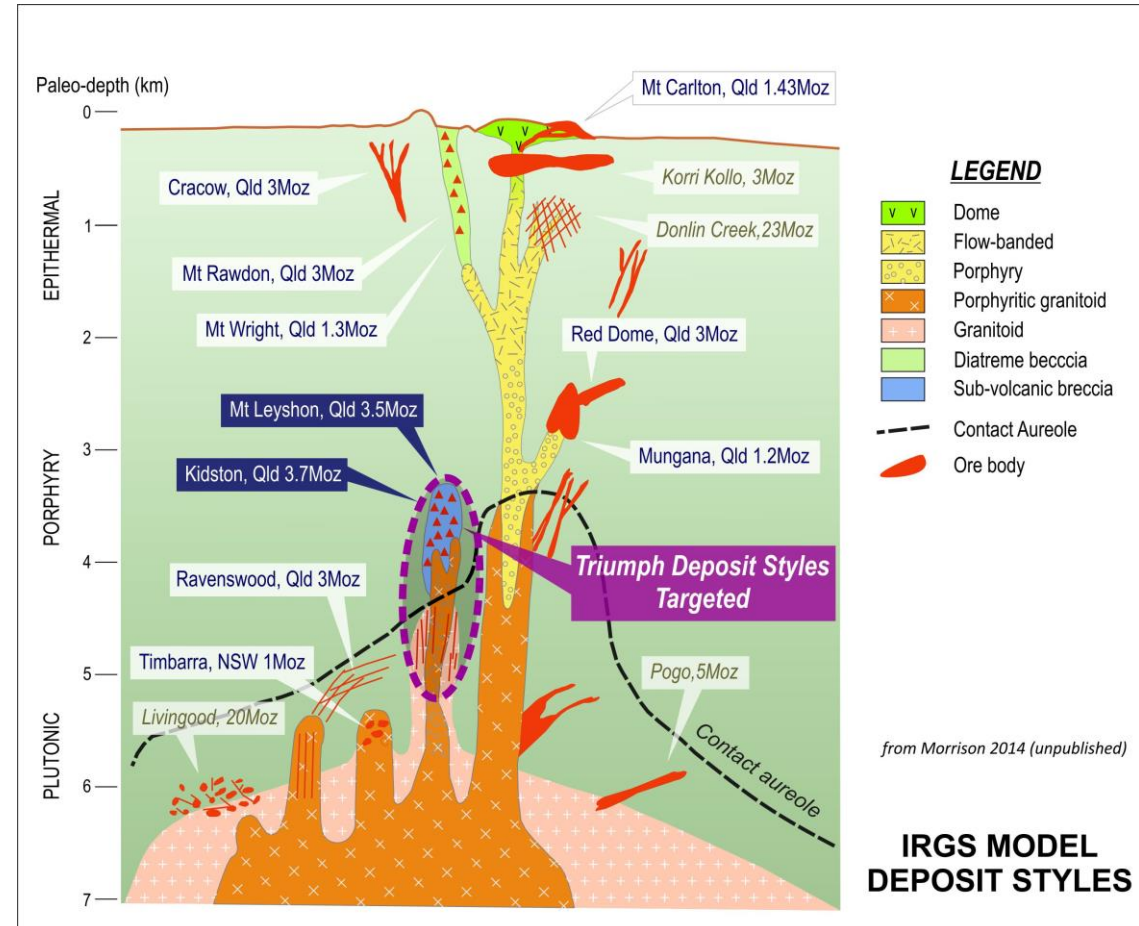


Triumph project

discovery of a large gold system



Metal rich district +18Moz Au

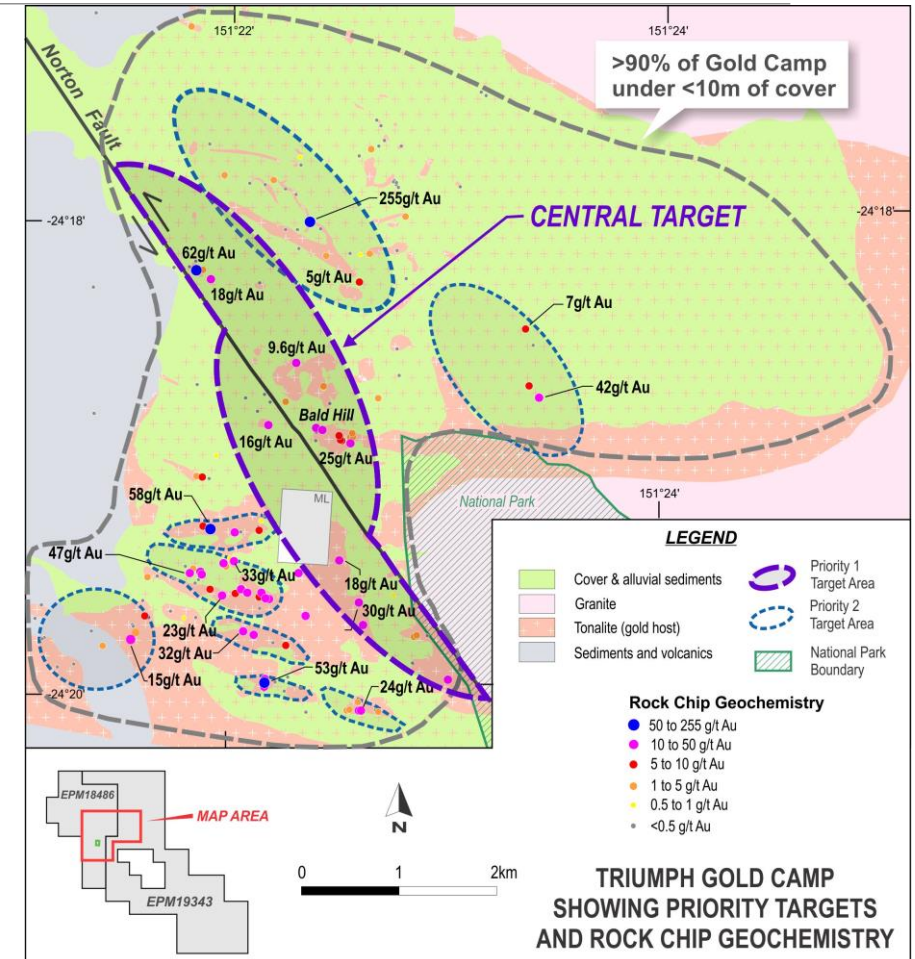


Triumph project

strategy paying off



- ✓ Identified an under-explored historical goldfield covering 1km² – tenure secured 2010
- ✓ Invested in greenfields exploration with new exploration protocols
- ✓ Results now highlight a gold camp extending over 15km² of which >90% is concealed by shallow cover (<10m) previously not recognised and precluding past exploration
- ✓ **Exploration vectors now point to a large target at the centre of the gold system**

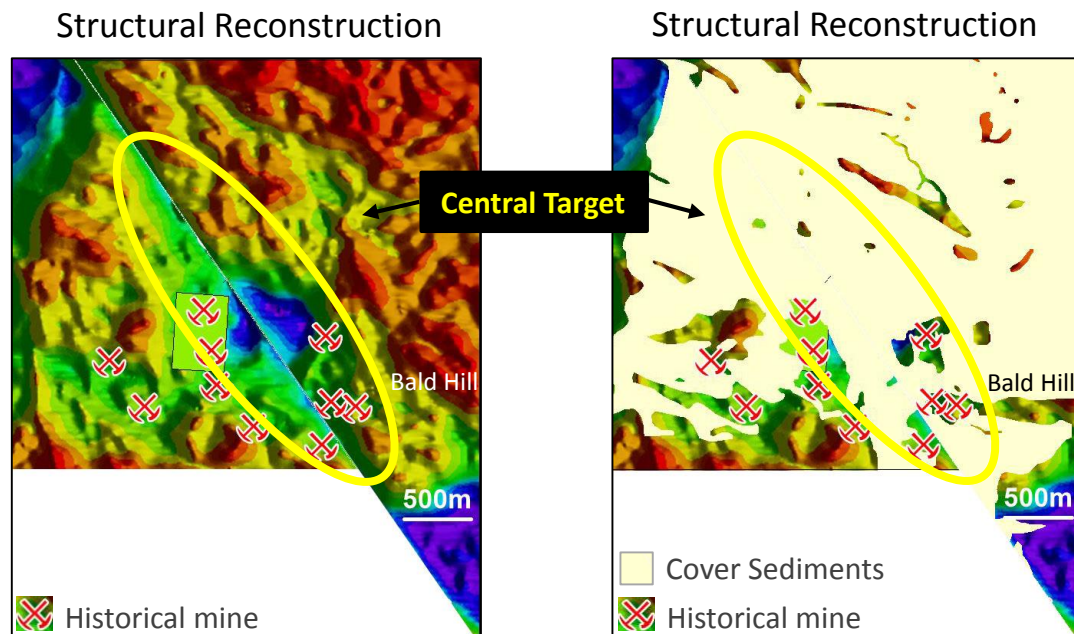


Triumph project

giant step forward



Structural reconstruction – magnetic low central to gold camp



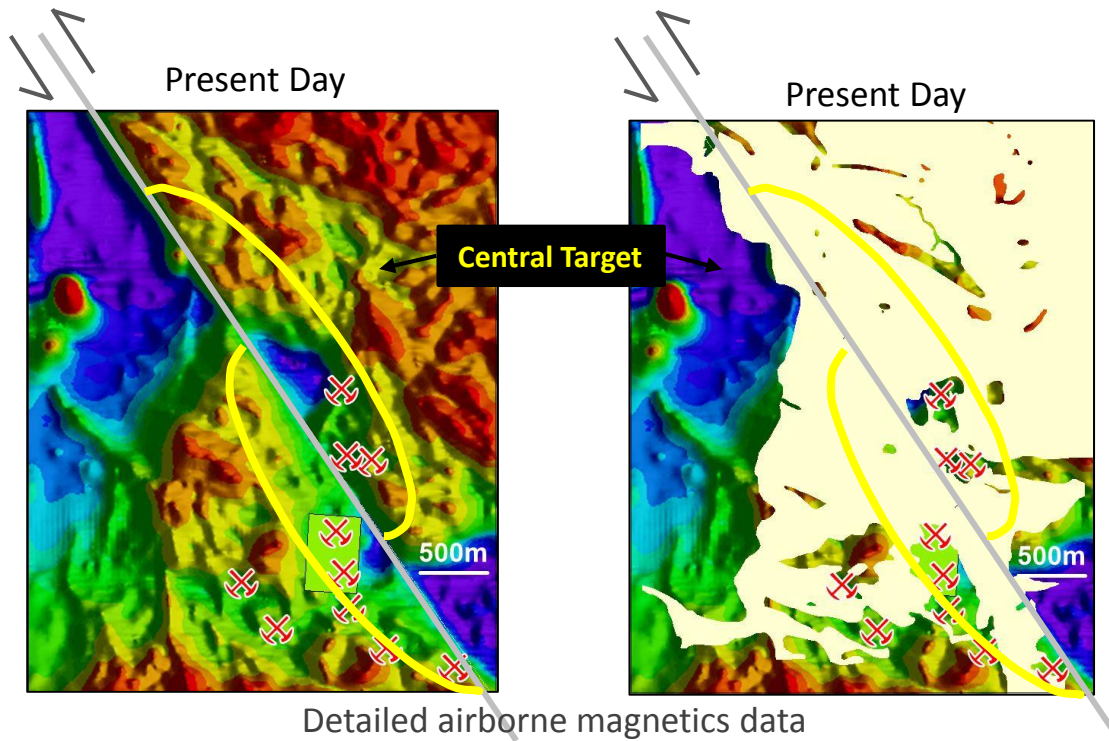
- ✓ Magnetic Low = Felsic intrusive phase / 'engine room' driving the entire gold system
- ✓ Potential for high grade gold within and next to (proximal) to the 'engine room'
- ✓ Target area is 90% concealed by cover sediments (<10m)

Triumph project

thinking big



Present day Central Target – Reactivation of Norton Fault



Norton Fault – A long lived important mineralizing structure

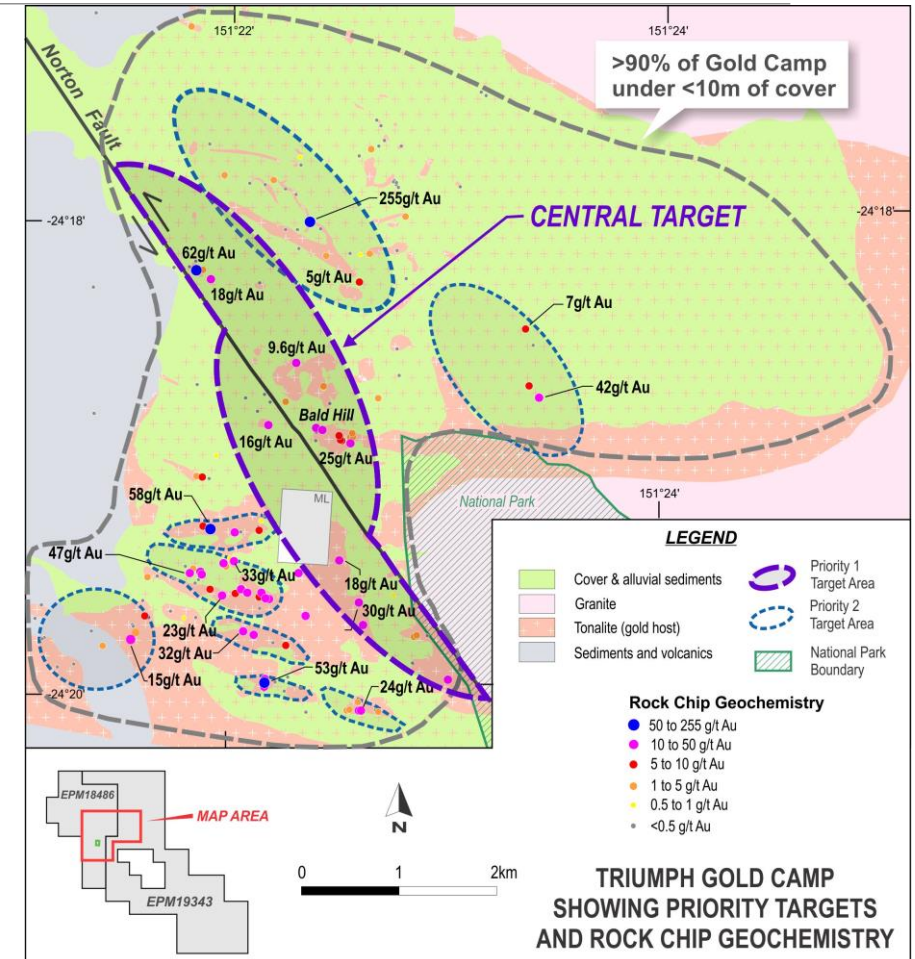
- ✓ Early stages of Norton fault controlled the emplacement of gold bearing felsic intrusives control on regional and local gold mineralisation
- ✓ Late movement on the Norton Fault has offset the gold system

Triumph project

uncovering a large opportunity



- ✓ Exploration vectors point to untested large scale targets at the centre of the gold system
- ✓ Outcropping high grade gold mineralisation occurs peripheral to the Central Target
- ✓ Recently discovered gold bearing gravels in cover sediments adjacent to Bald Hill 0.9m @ 4.4g/t Au from 6m



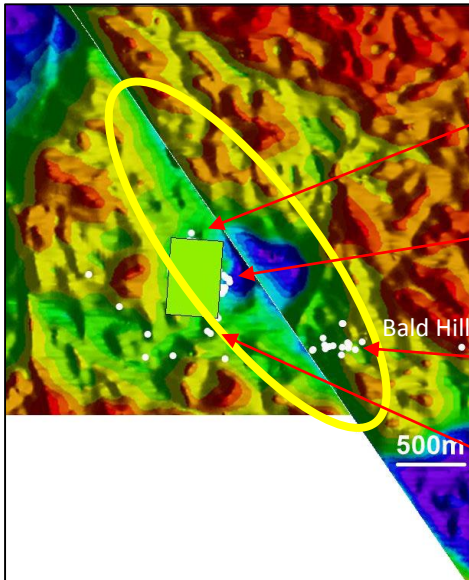
Triumph project

limited previous drilling



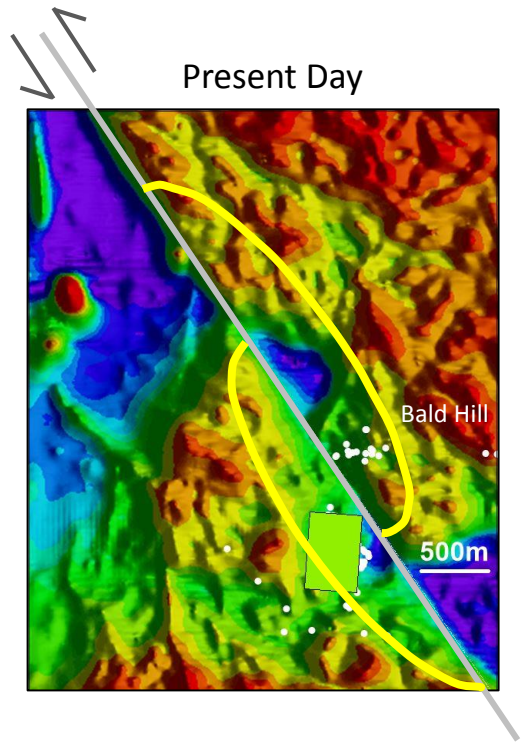
High grade gold skirting the central magnetic low

Structural Reconstruction



- 4m @ 10.5g/t Au from 31m including
1m @ 20.8g/t Au from 31m (NN06RC07)
- 1m @ 16.6g/t Au from 15m (NRC-16)
- 9m @ 3.6g/t Au from 114m including
1m @ 21.8g/t Au from 122m (Bald Hill TDH008)
- 3m @ 4.8g/t Au from 22m (PG87-28)

Present Day

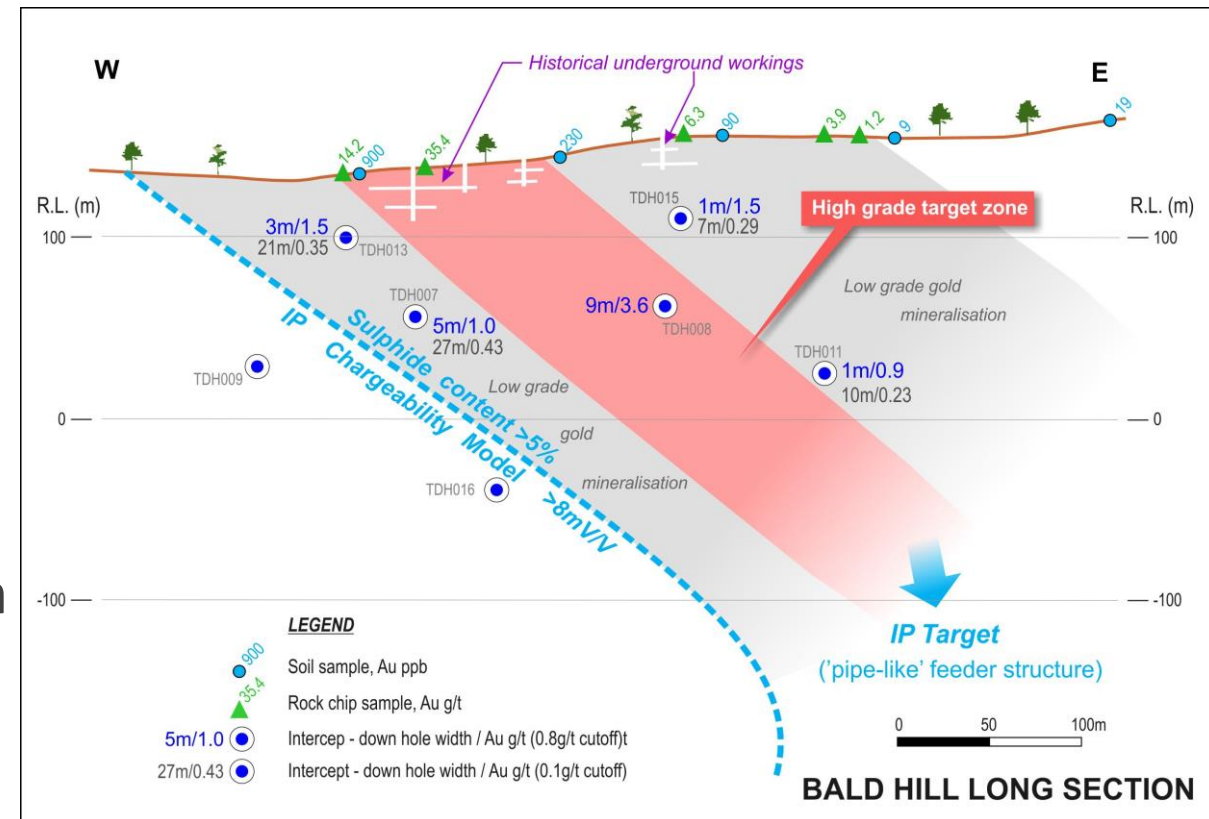


Triumph project

Bald Hill – on the edge of something bigger



- ✓ Located peripheral to magnetic low
- ✓ Initial drilling in 2014
 - 9m @ 3.6g/t Au
 - 27m @ 0.43g/t Au
- ✓ Drilling confirms an extensive hydrothermal alteration system
- ✓ Plunging higher grade enveloped by an intensely altered low grade gold halo
- ✓ Further drilling required to confirm high grade mineralisation geometry



Triumph project

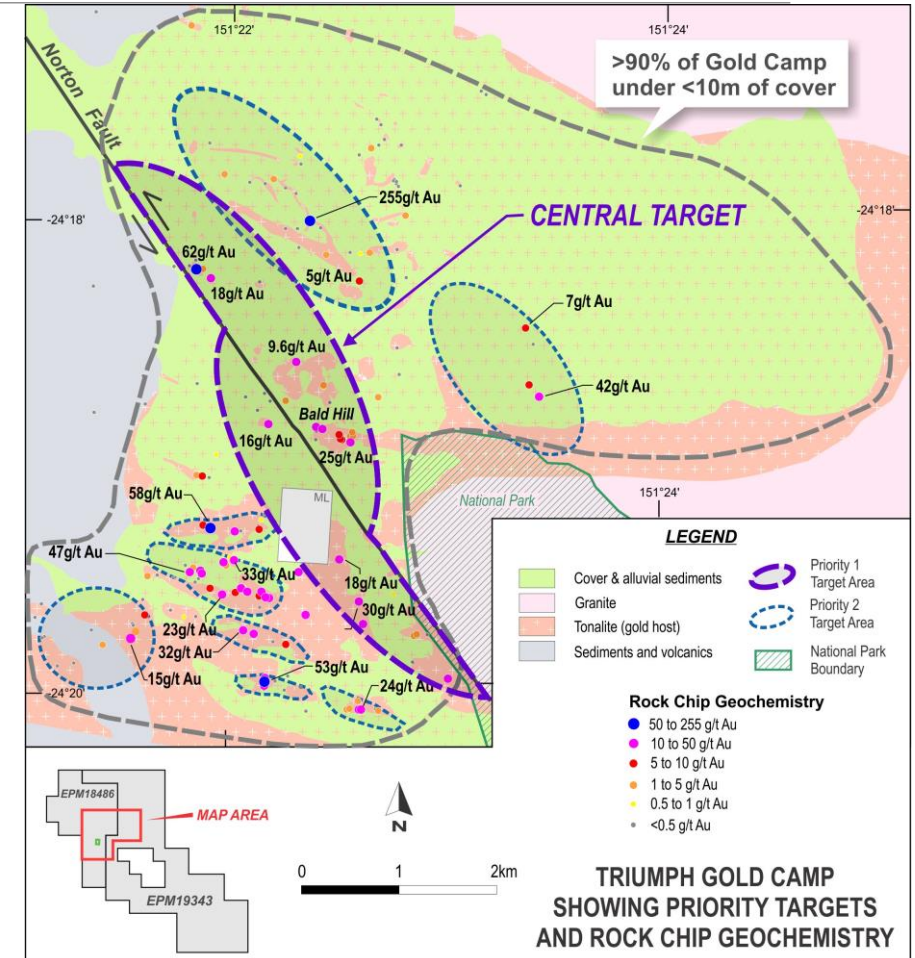
next steps



Central Target

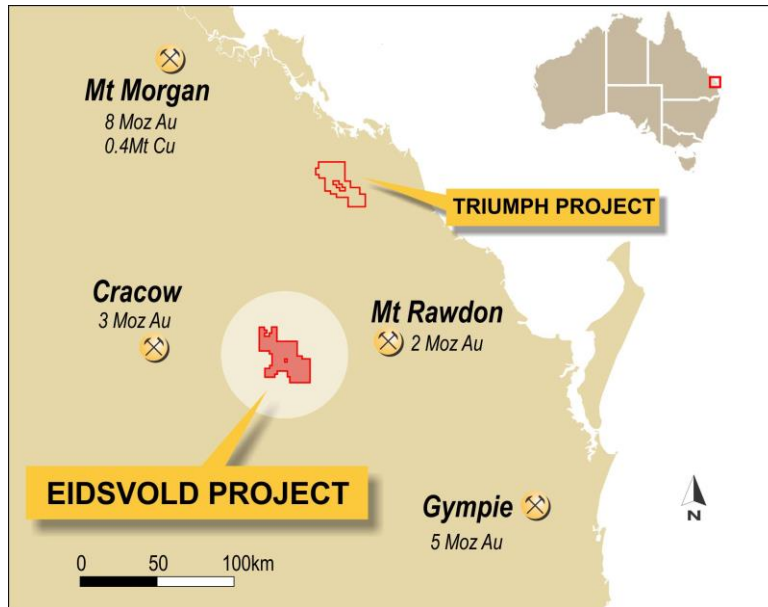
- ✓ Infill geological mapping
- ✓ Drilling of 10 structural / alteration targets already identified undercover

Gold mineralised quartz-sulphide veins with sericite-pyrite alteration

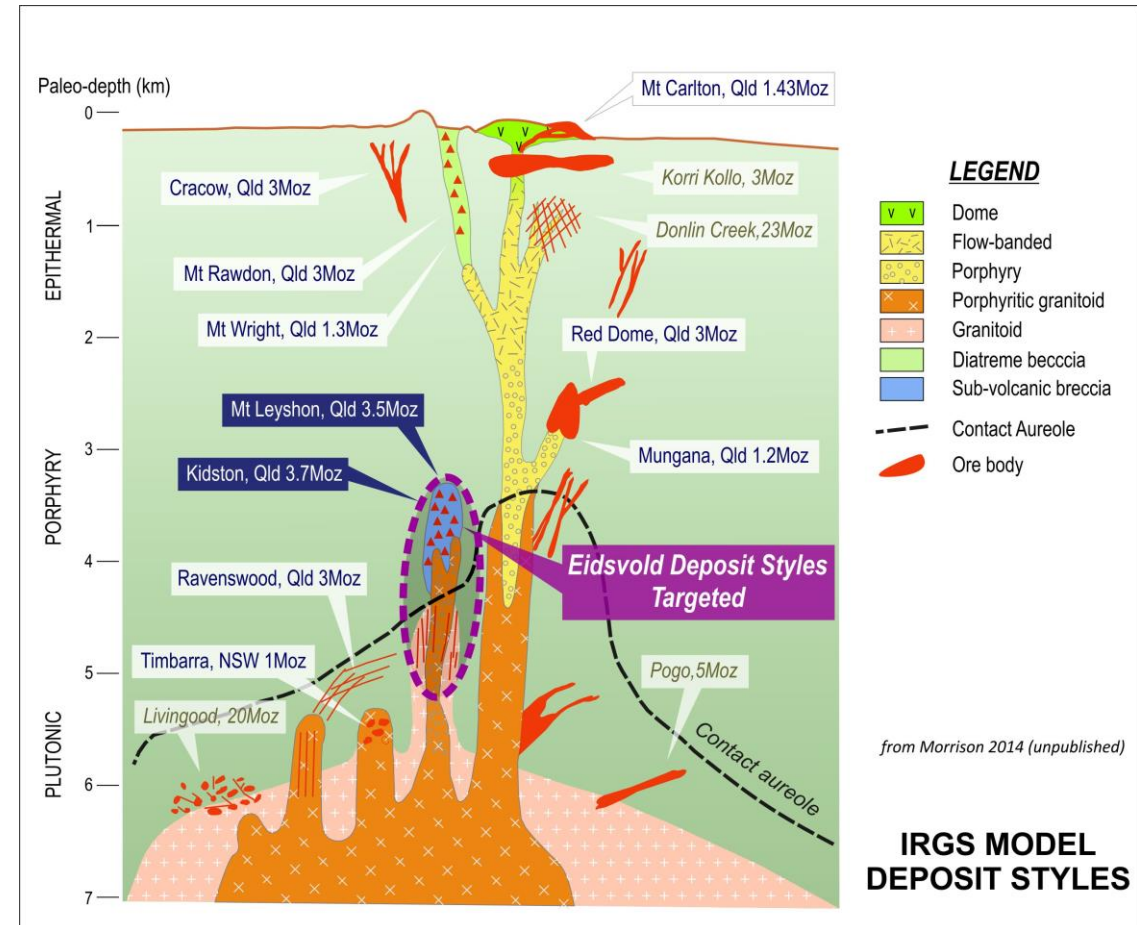


Eidsvold project

past production (100,000oz) early 1900's



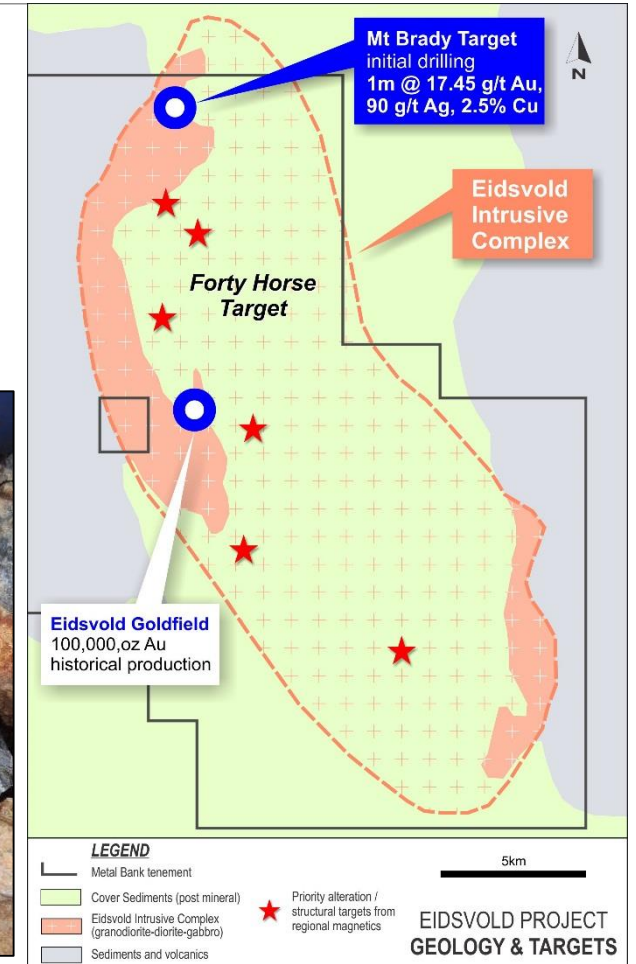
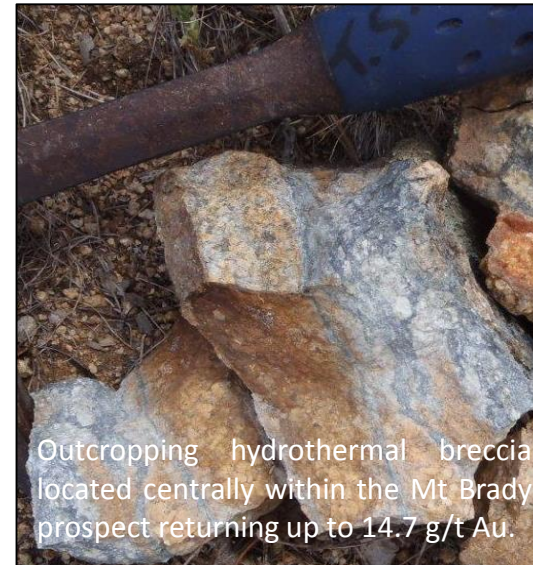
Metal rich district +18Moz Au



Eidsvold project

fertile intrusive complex

- ✓ 100,000oz historical goldfield hosted by intrusive basement exposed through sedimentary cover
- ✓ Alteration and structural targets defined in a 10km long corridor represent potential intrusive related gold systems
- ✓ Discovery of intrusion related gold mineralisation at Mt Brady with initial drilling - **1m @ 17.5g/t Au and 2.5% Cu**
- ✓ Proof of concept – Intrusion related gold model

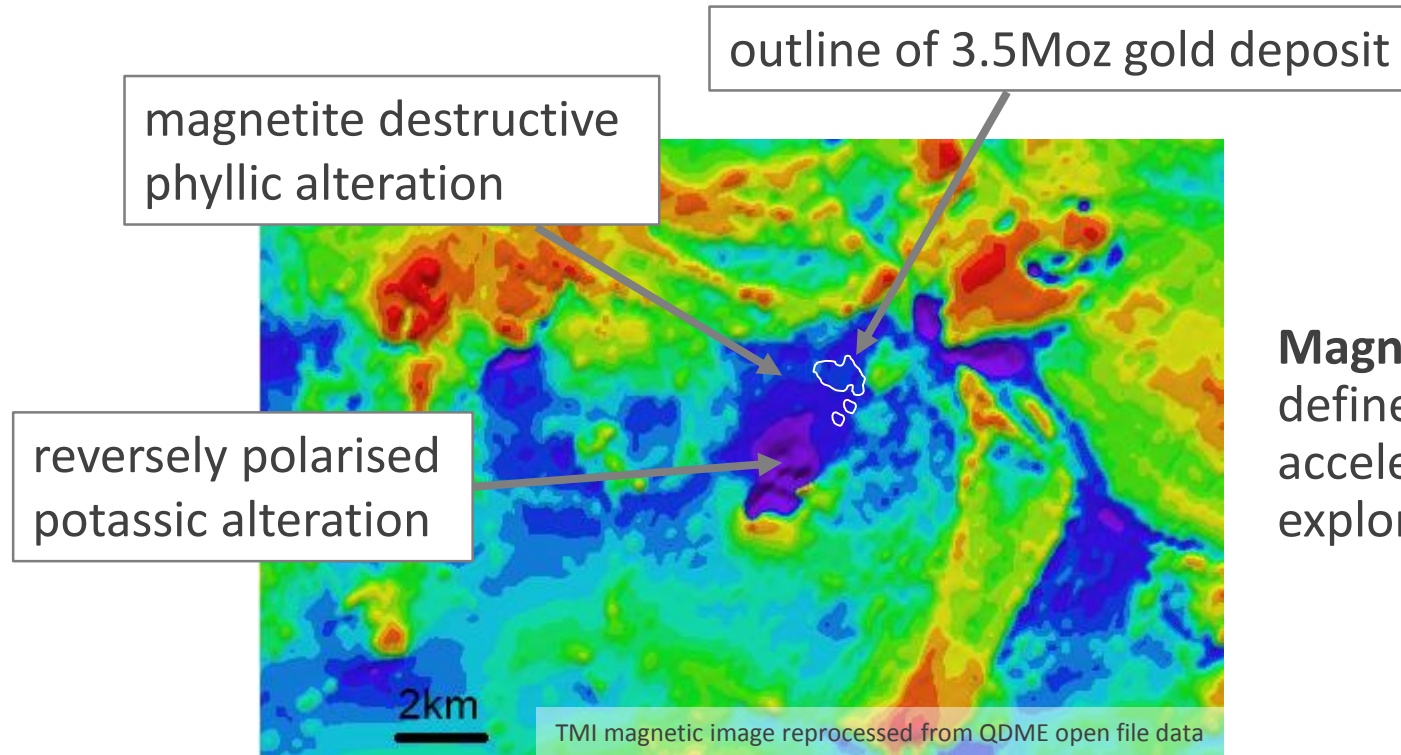


Exploration Targeting Tools

classic example of magnetite destruction



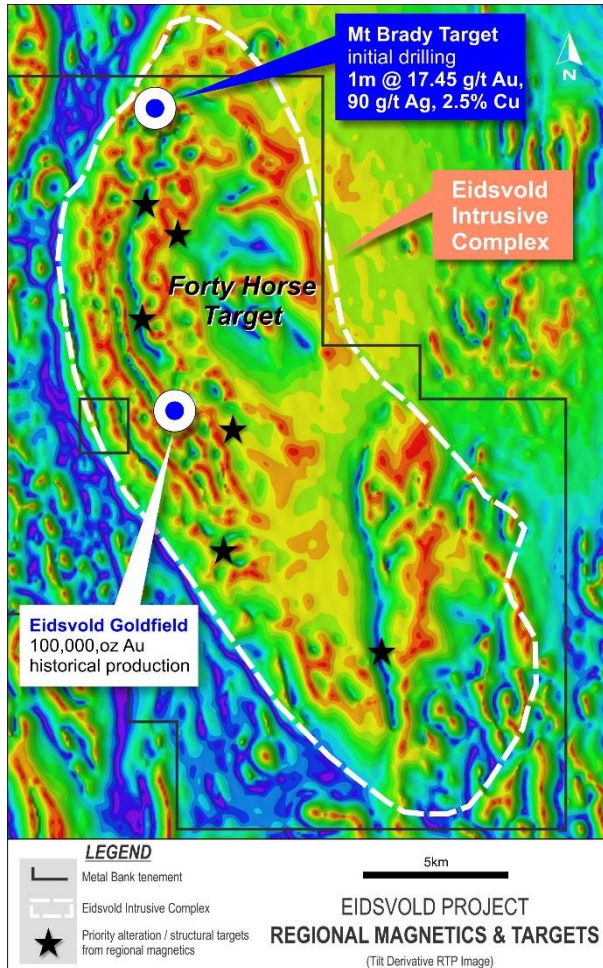
Mt Leyshon 3.5Moz gold deposit, Qld – great example of mapping a large alteration system using magnetic data



Magnetite Destruction – potential to define large scale mineral systems and accelerate discovery success, especially exploration undercover

Eidsvold project

first mover advantage / opportunity

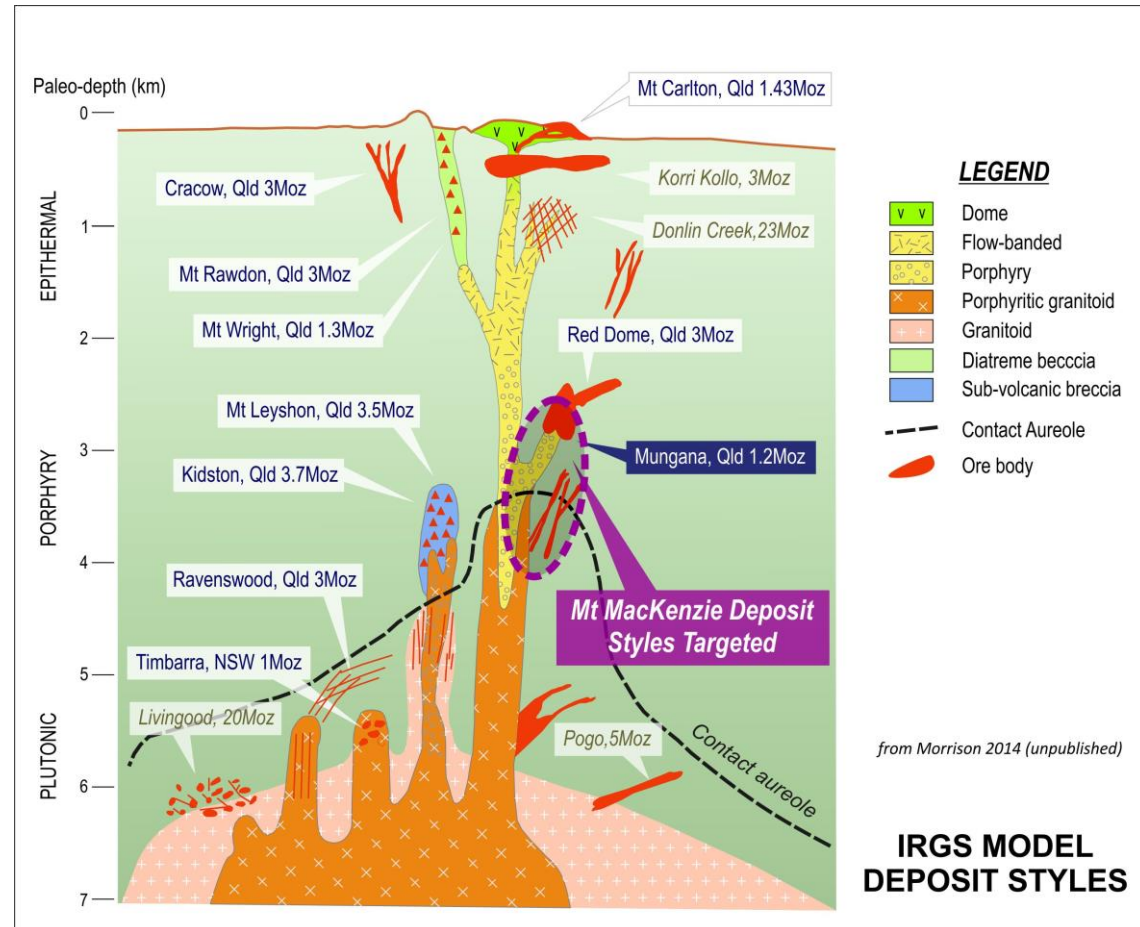
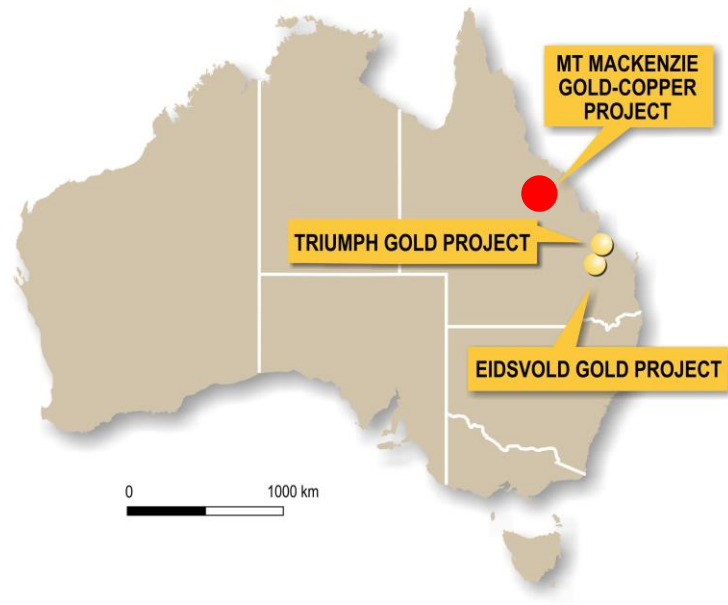


- ✓ Now opens up 250km² of virtually unexplored, prospective fertile intrusive complex hosting historical goldfield
- ✓ Large ground holding secured
- ✓ Magnetite destruction an important targeting tool
- ✓ Potential for early success targeting interpreted structurally controlled zones of magnetite destruction under cover (<40m)

Next Steps: Detailed helimagnetics and drilling of alteration / structural targets interpreted as new intrusion related gold systems

Mt MacKenzie project

porphyry target



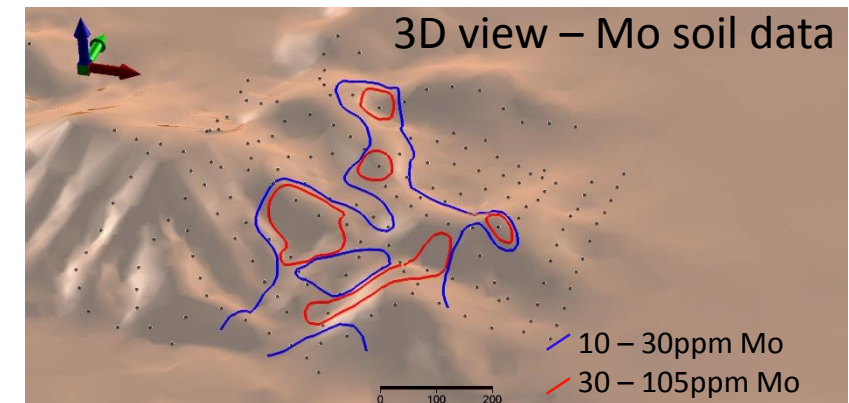
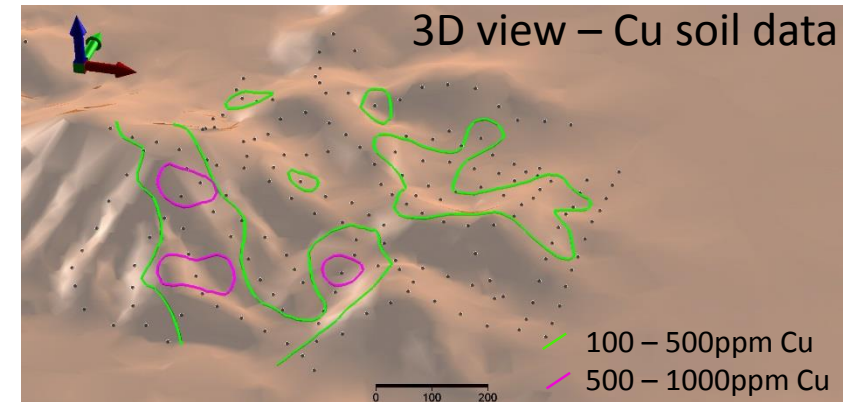
Mt MacKenzie project

Cu-Mo porphyry system



Target – bulk tonnage Cu-Mo \pm Au system

- ✓ Cu-Mo porphyry system defined by 1970's 'porphyry copper' exploration – overlooked by modern gold exploration
- ✓ Cu-Mo typical metal association for many large gold deposits in Eastern Australia, e.g. My Leyshon and Kidston gold deposits
- ✓ Established mining district - 40km NE of Mt Carlton Au-Ag-Cu deposit

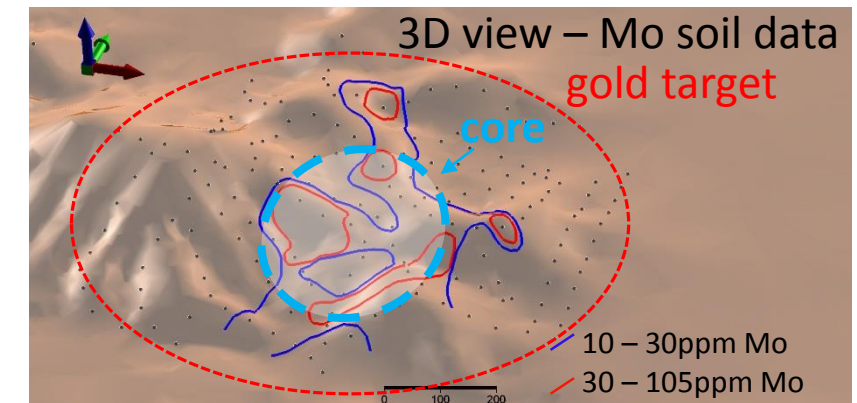
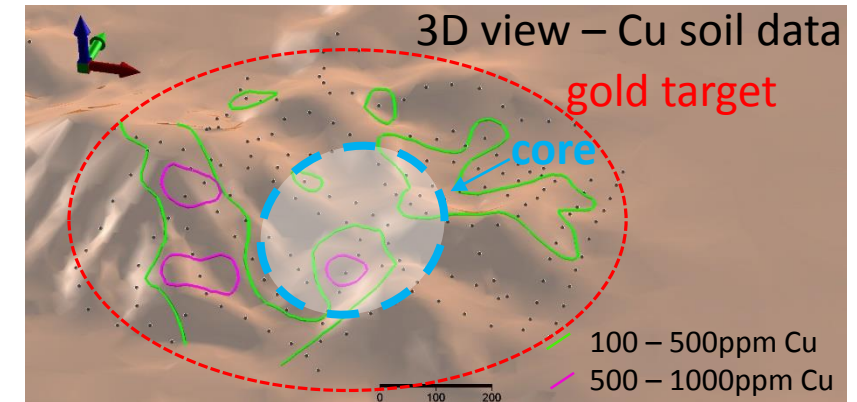
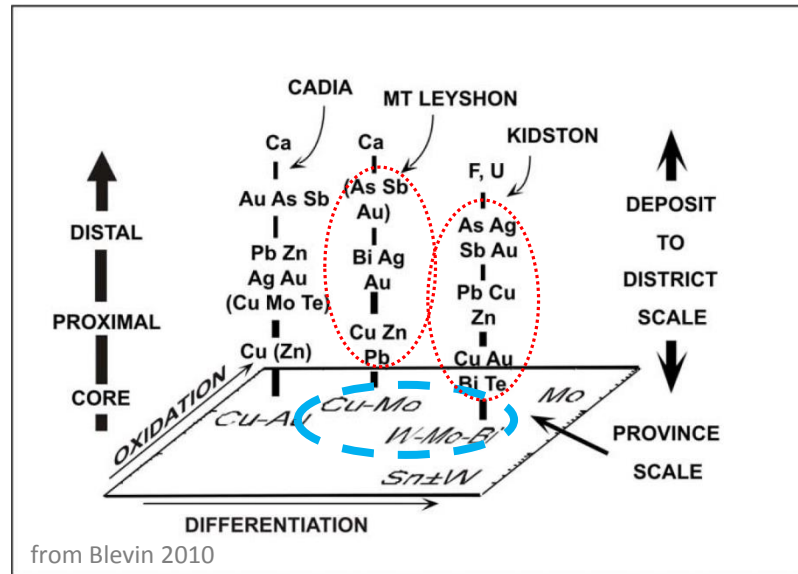


Mt MacKenzie project

prospective metal zonation pattern



- ✓ Gold mineralisation is often found proximal to the core in these styles of mineral systems



Next Steps: Surface sampling, geological mapping and drilling

Looking Ahead

project execution and new opportunities



- ✓ Positioned for Growth (organic and acquisition)
- ✓ A team solidly grounded in project execution and generation – access to a global network and project opportunities



Summary

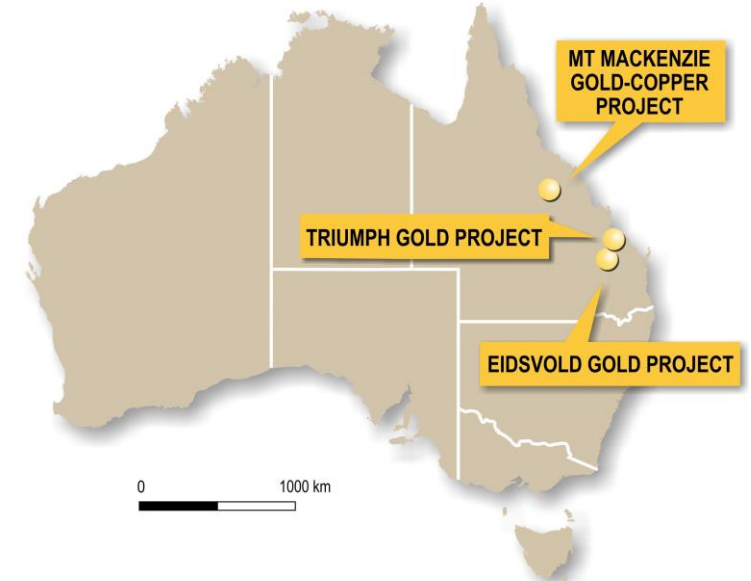
potential for a large prize



A portfolio of three projects with excellent short to medium term upside

- ✓ **Triumph Project** – Targeting the ‘engine room’ of a large system
- ✓ **Eidsvold Project** – ‘First mover’ opportunity on a fertile intrusive complex
- ✓ **Mt MacKenzie Project** – Porphyry style Cu-Mo system overlooked by modern gold exploration

Our Business is
Gold and Copper



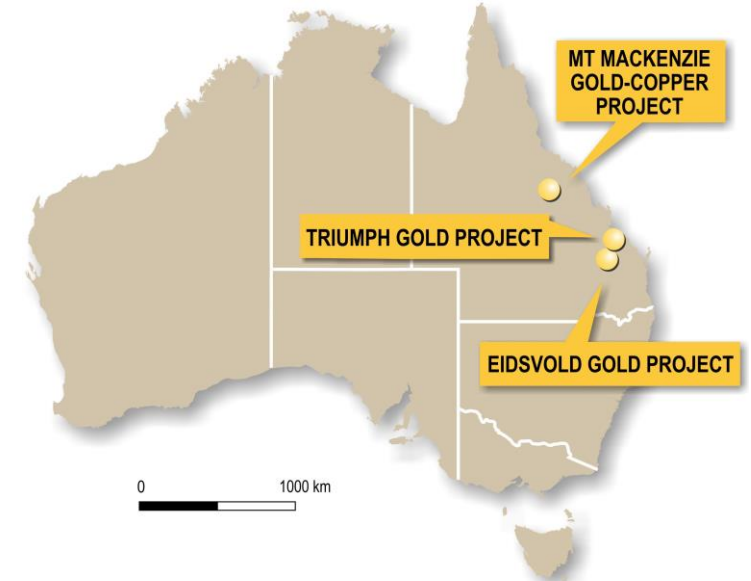
Summary

track record of success



- ✓ Strong shareholder backing – ex-Citadel team
- ✓ Significant ‘skin in the game’
- ✓ Already two drill discoveries this year in Qld
- ✓ Team with a successful track record
- ✓ Evaluating new gold and copper opportunities

Our Business is
Gold and Copper



Directors and Management

integrated corporate governance



Inés Scotland
Non-Exec Chair

Founder and MD of Citadel Resources which sold for A\$1.3B. Inés has been in the resource industry for over 20 yrs and is currently a non-exec director of St Barbara.

Tony Schreck
Director

Geologist with 25 yrs of mineral exploration experience with a track record of discovery including the discovery of the Twin Bonanza gold deposits (NT).

Guy Robertson
Director

Over 30 years experience as Chief Financial Officer, Company Secretary and Director of both public and private companies in Australia and Hong Kong and is currently a director of Artemis Resources.

Sue-Ann Higgins
Company Secretary

Over 25 years in the mining industry including in senior legal and commercial roles with ARCO Coal, WMC, Oxiana and Citadel. Ms Higgins has extensive experience in governance, compliance, mergers and acquisitions.

Metal Bank Limited

contact us



ASX Code: MBK

www.metalbank.com.au

Tony Schreck

Director

0419 683 196

tony@metalbank.com.au