

Kingston Resources Limited

Investor Presentation
Six Mile Hill & Cootanoorina Projects
7 November 2014

Kingston Resources Ltd

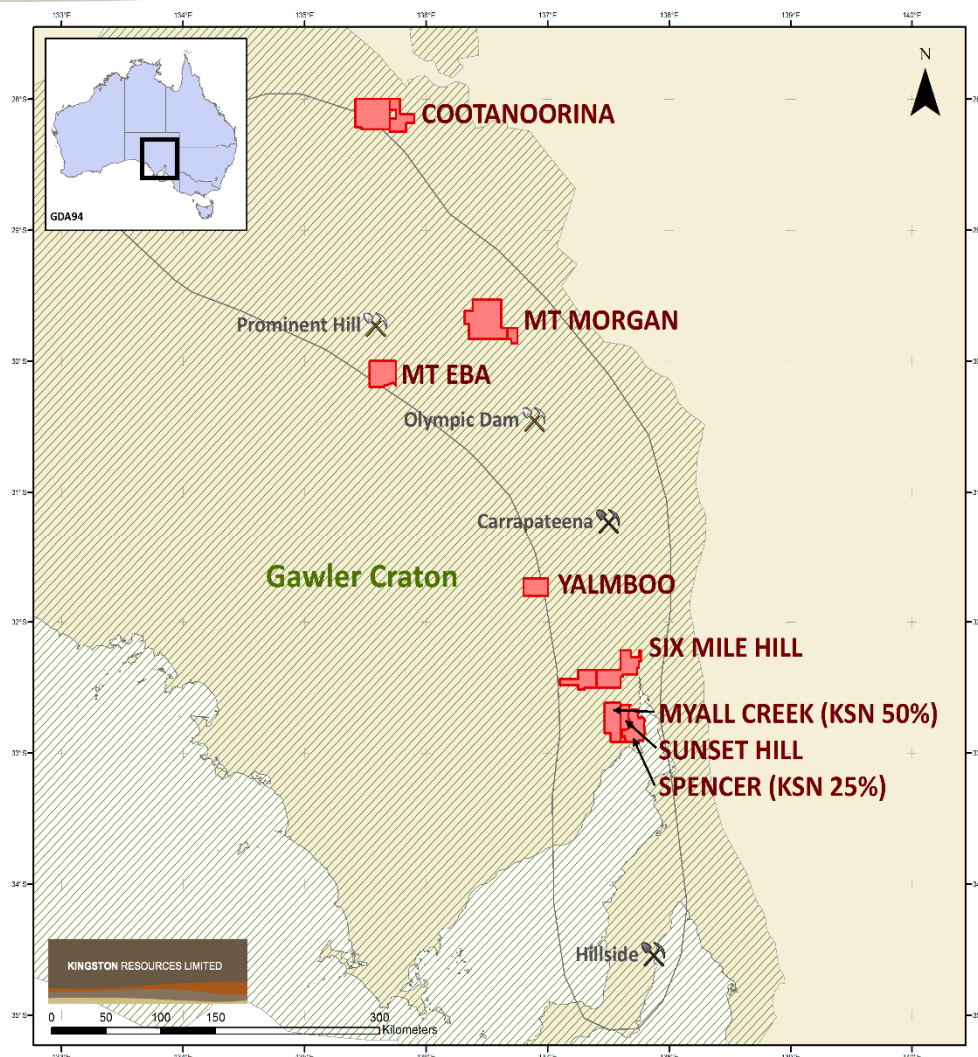
25-27 Jewell Parade North Fremantle, Western Australia 6159

t +61 8 9336 6619 **f** +61 8 9335 3565 **w** www.kingstonresources.com.au **e** info@kingstonresources.com.au

KINGSTON RESOURCES LIMITED

About Kingston Resources (ASX:KSN)

- Exploration activities are centered in South Australia with an interest in eleven prospective IOCG deposits in the Olympic Arc corridor in the Gawler Craton.
- Kingston is now highly focused on identifying IOCG drill targets at two of its projects:
 - Six Mile Hill - EL 4494 and newly granted EL 5498; and
 - Cootanoorina - EL 4462 and newly granted EL 5487.
- Kingston's Rights Issue Prospectus to raise \$0.755 m Offer Opens on 13/11/2014.
- Funds raised to be applied:
 - \$0.505 m in identifying, designing and implementing drilling program at above projects; and
 - \$0.250 m on working capital and cost of issue.



KINGSTON RESOURCES LIMITED – Corporate Overview

Board of Directors

- Jonathan Davies, BJuris, LLB- Chairman
- Mathew Whyte, BCom, CPA, FCSA
- Yafeng Cai, CPA

Key Personnel

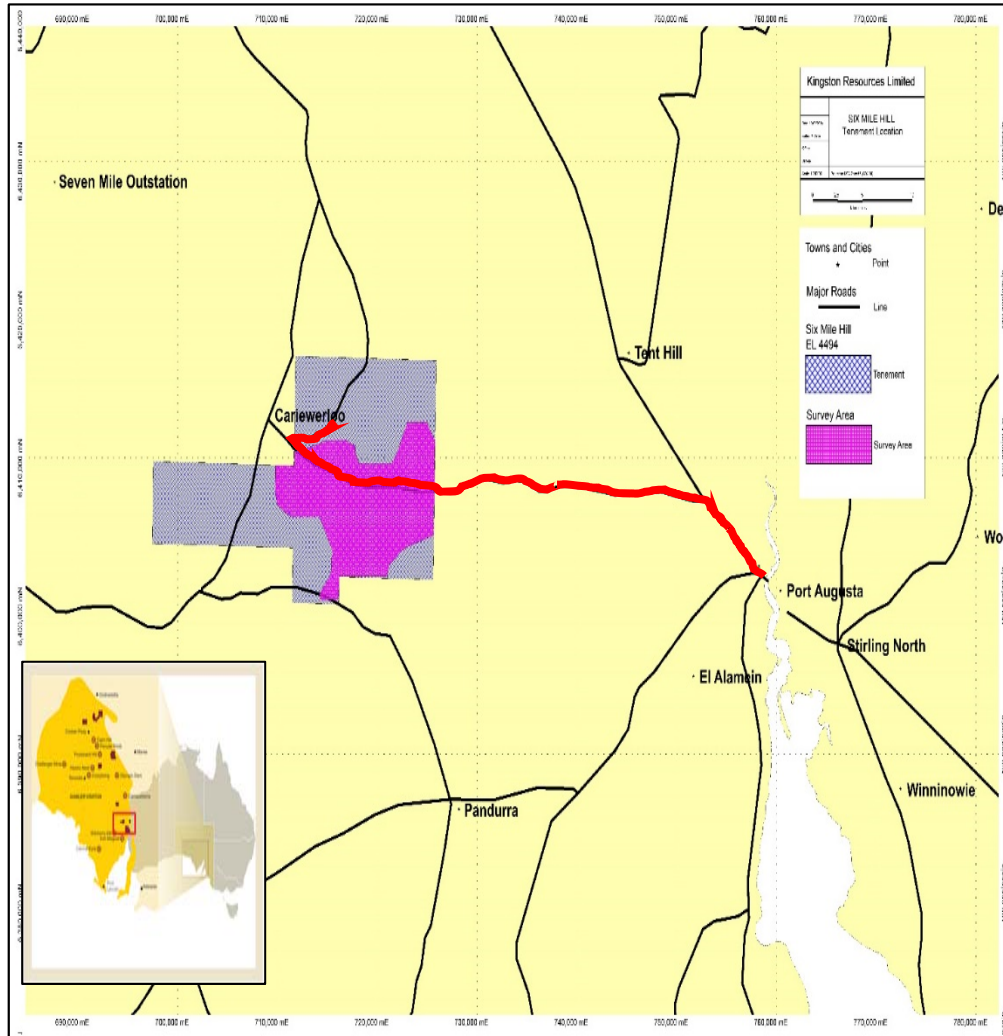
- Mr Barry Bourne, BSc(Hon), FAIG, MAICD - Consultant/ Chief Geophysicist

Capital Structure*

	Pre Rights Issue	Indicative-Post Rights Issue*
Shares on Issue (KSN :Quoted)	49,439,168	103,307,665
Shares on Issue (Unquoted)	40,341,660	40,341,660
TOTAL SHARES ON ISSUE	89,780,828	143,649,325
Options on Issue (KSNO :Quoted)	10,302,500	10,302,500
Options on Issue (Unquoted)	21,400,000	21,400,000
Market Capitalisation @ \$0.014	\$1.25m	\$2.00 m
Cash balance Pro- forma 30/9/14	\$0.55m	\$1.26m

*Renounceable rights issue now open at issue price \$0.014/ Share on the basis of 3 New Shares for every 5 held at the Record Date 11/11/2014, issuing a maximum 53,868,497 New Shares to raise up to \$754,159 (before costs). Refer to Rights Issue Prospectus dated 4/11/2014 <http://www.kingstonresources.com.au/prospectus>

KINGSTON RESOURCES LIMITED – Six Mile Hill Project



- The Six Mile Hill project lies approximately 45km to the west of the regional center of Port Augusta at the northern tip of Spencer's Gulf.
- The Six Mile Hill project consists of EL 4494 and the newly granted 2 year EL 5498 immediately east of EL 4494 (both 100% owned)
- Ground-based, geophysical gravity survey has been completed at the Six Mile Hill project.
- Kingston has signed Native Title Mining Agreements (NTMA) with local traditional land owners Barngarla Aboriginal Corporation.

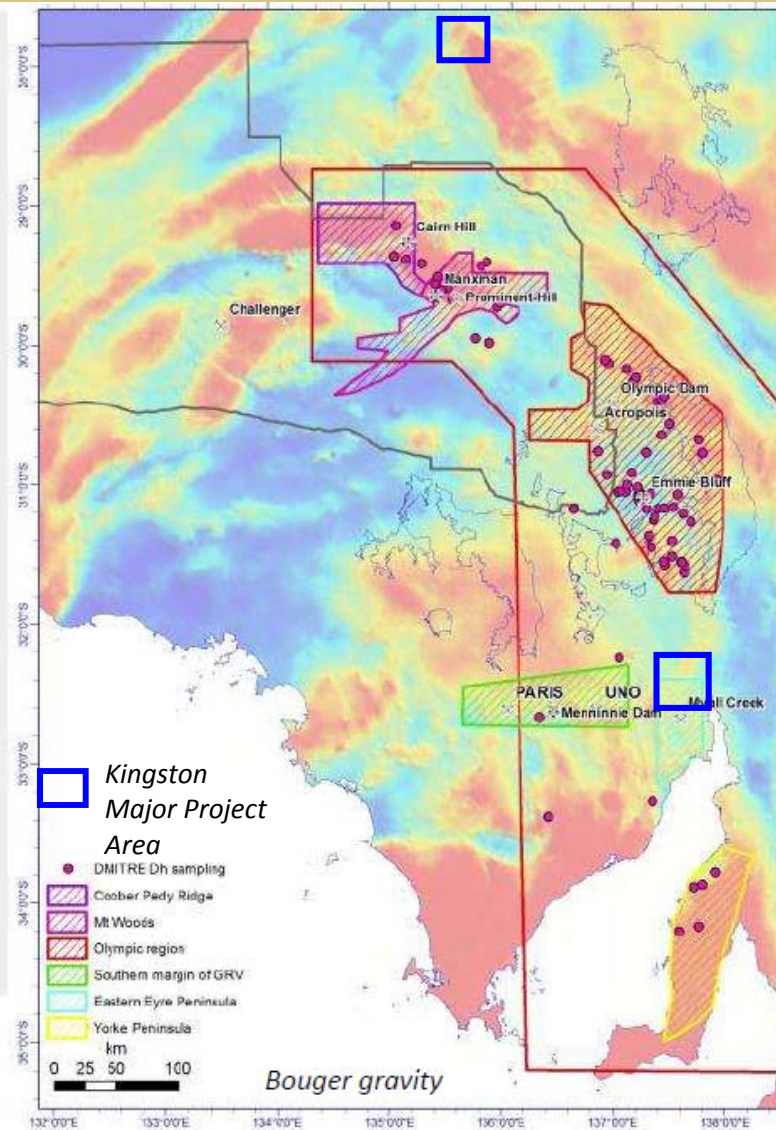
KINGSTON RESOURCES LIMITED – Six Mile Hill Project

- The recently acquired detailed gravity has achieved the objective of better defining the depth and density of the targets at Six Mile and Six Mile East. In both cases the targets are shallower and more dense than models on 1km x 1km spaced data
- Interpretation suggests Hiltiba equivalent intrusives could be present
- Preliminary density models will now be combined with the drilling data to construct cross sections near each of the target areas to understand the subsurface geology and define drill targets

KINGSTON RESOURCES LIMITED – Six Mile Hill Project

SA Mineral Systems Drill Program

- Drill program offers opportunity to build on DMITRE's regional footprint mapping.
- GSSA – Key areas of interest highlighted although all proposed locations will be considered

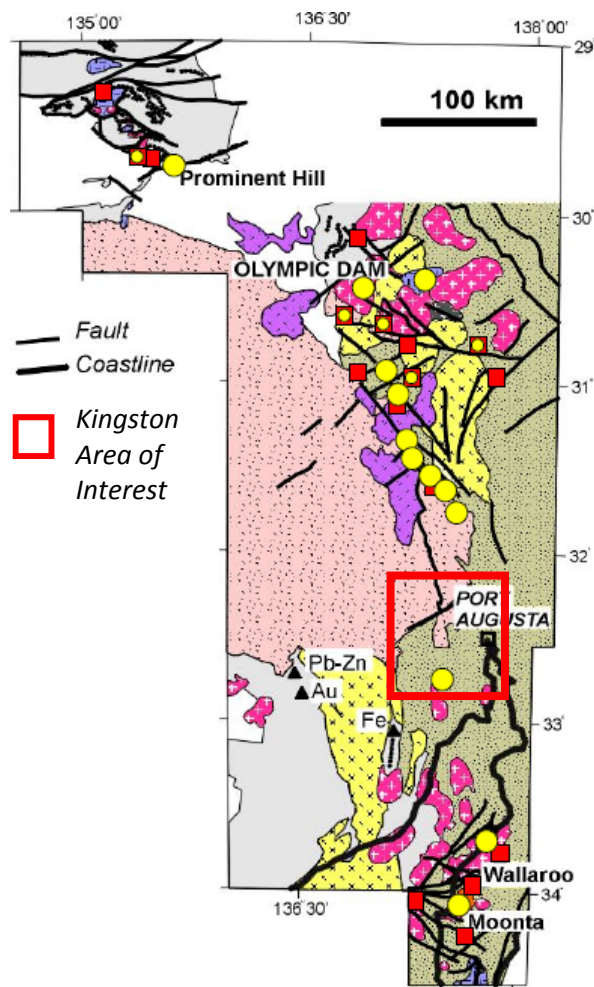


- Application submitted to SA Dept State Development (DSD) for the 2015 SA Mineral Systems Drill Program at Six Mile Hill.
- There is no assurance that the application will be successful
- DET will partner with DET -CRC using new technologies for exploration through thick cover rocks
- Successful applicants expected to be notified late Calendar Yr 2014



DEEP EXPLORATION
TECHNOLOGIES CRC
Uncovering the future

KINGSTON RESOURCES LIMITED – Six Mile Hill Project



Alteration types

- **CAM: calcsil - alk feld - mt**
- **MB: mt - bt ± Cu-Au**
- **HSCC: hm - ser - chl - carb ± Cu-Au-U**
- **HSCC overprinting CAM / MB**

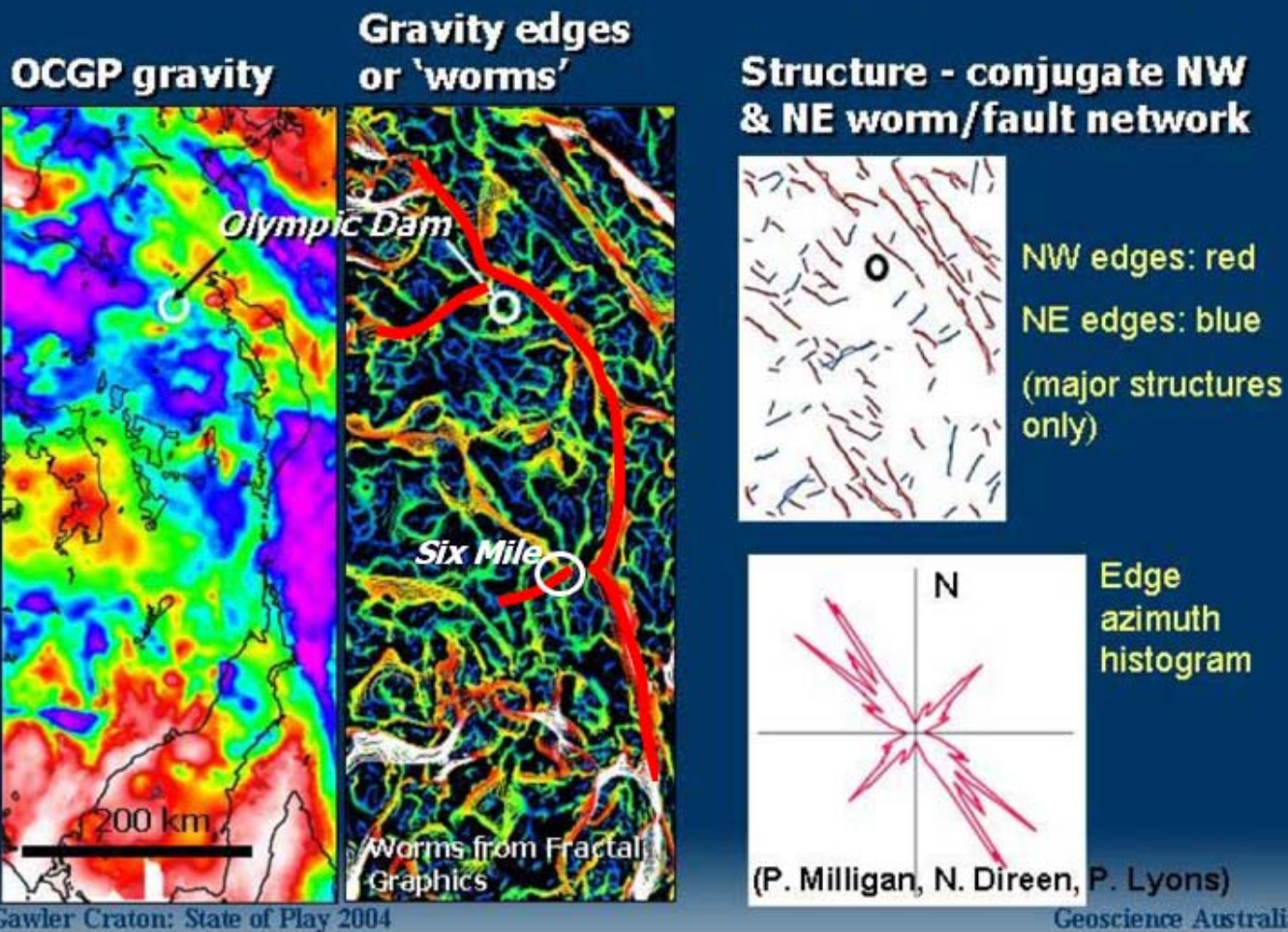


- The HSCC alteration assemblages (hematite, sericite, chlorite, carbonate) occur in all three of the regional 'footprints' and are in places closely associated with Cu-Au mineralisation, with or without U (e.g. Olympic Dam, Prominent Hill, Emmie Bluff).
- Not all of the four key minerals are necessarily present at any particular occurrence of HSCC, but variations on this assemblage consistently are observed to overprint the CAM and MB assemblages.
- HSCC represents the products of relatively low temperature (<300 deg. C) oxidised fluids, and in places correlates with de-magnetisation features in aeromagnetics

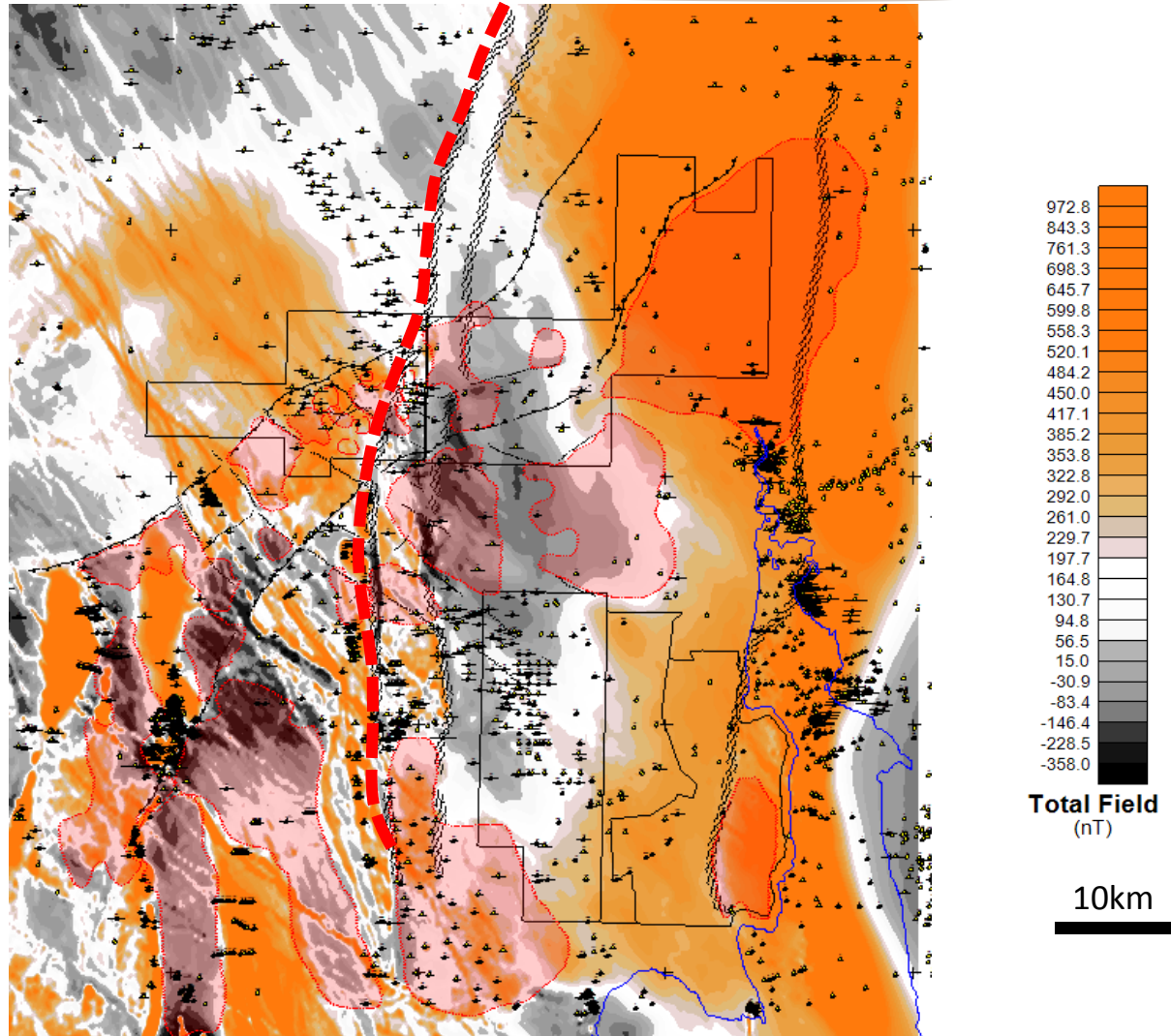
after Skirrow et. al. (2004)

KINGSTON RESOURCES LIMITED – Six Mile Hill Project

3. Crustal-scale fault network – Olympic Cu-Au prov.

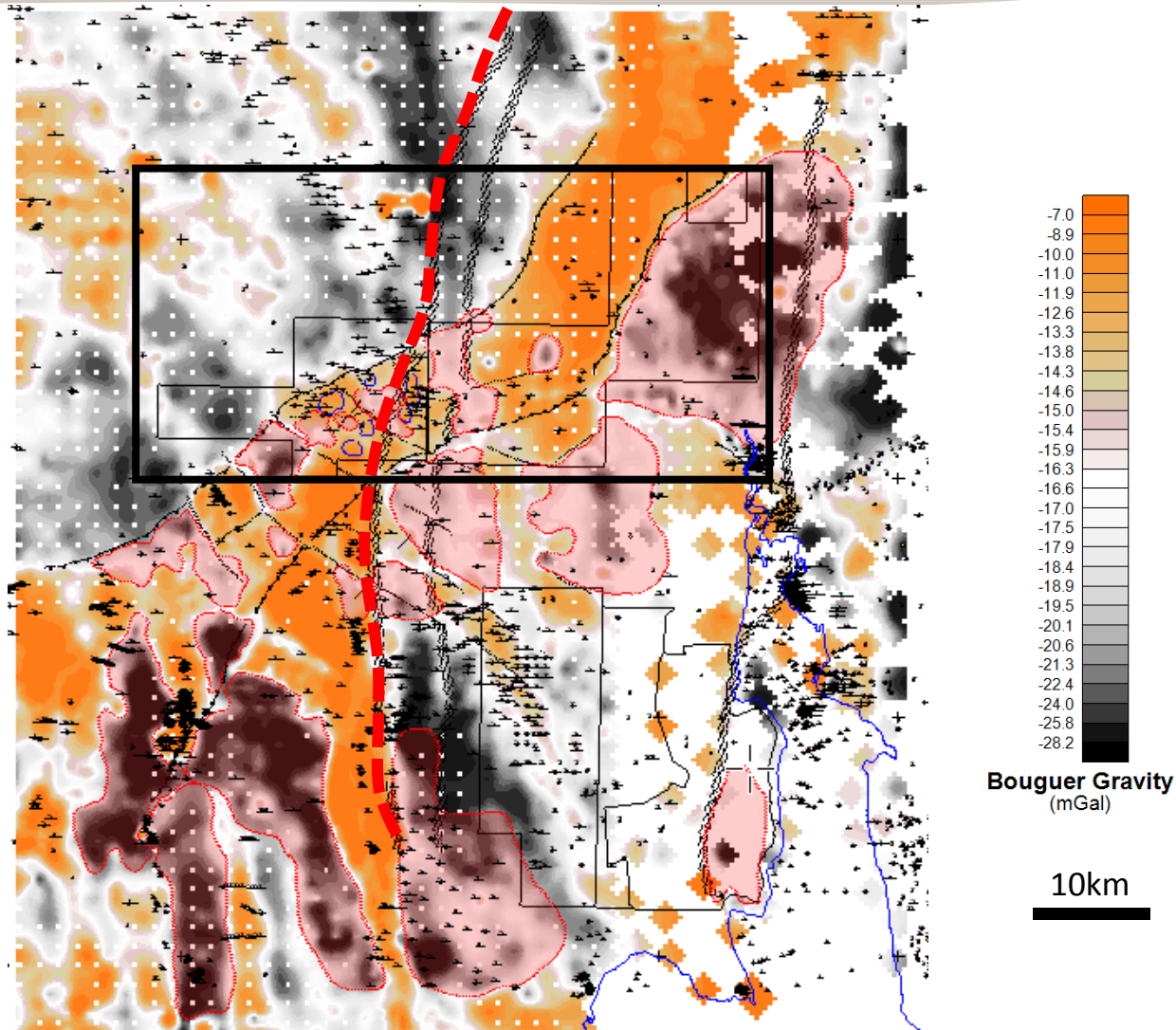


KINGSTON RESOURCES LIMITED – Six Mile Hill Project



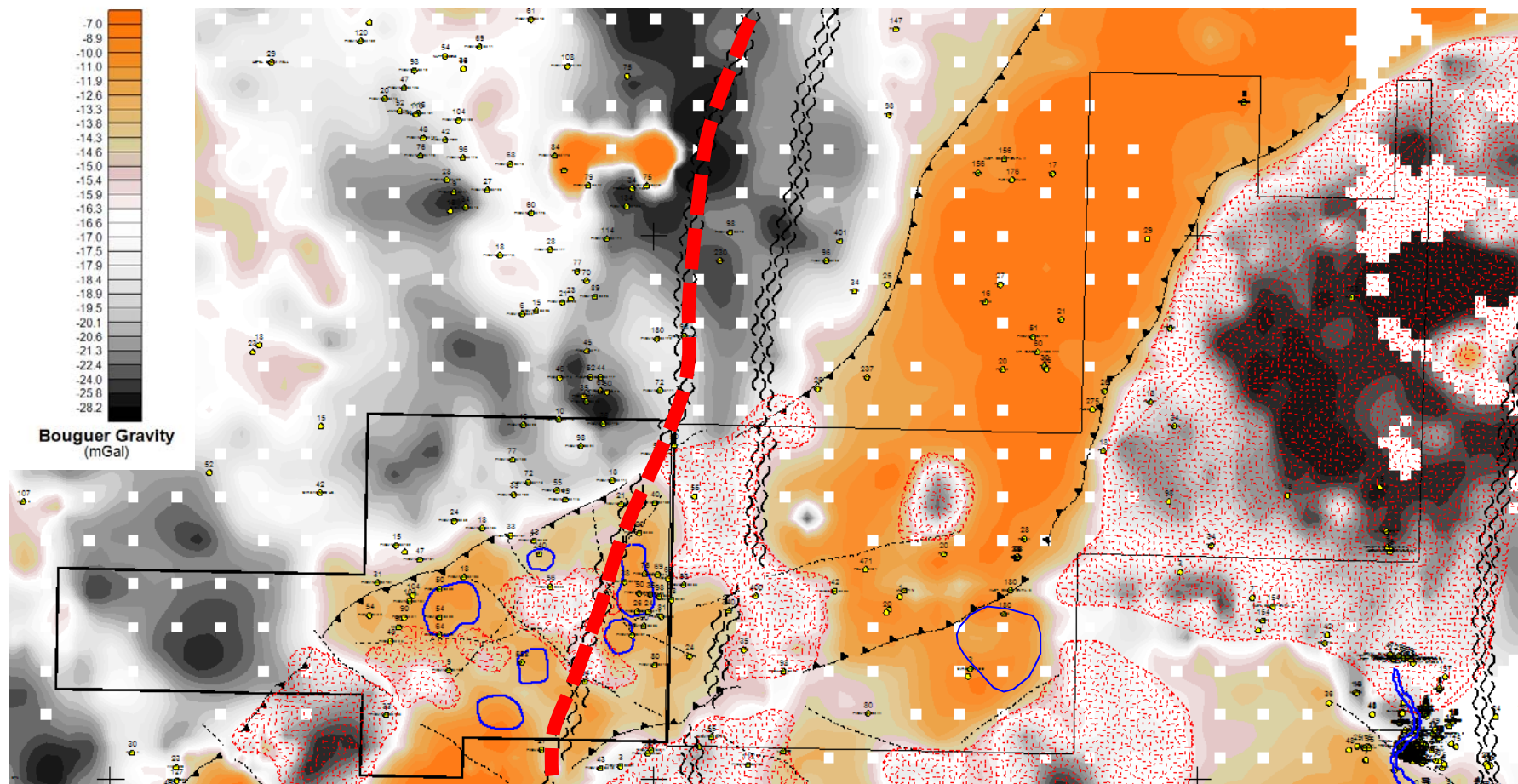
- Likely position of KSZ (Kalinjala Shear Zone) in red as one of the bounding structures to the Olympic Domain.
- Potential gravity targets in the Olympic Domain between NW/NE trending structures.

KINGSTON RESOURCES LIMITED – Six Mile Hill Project



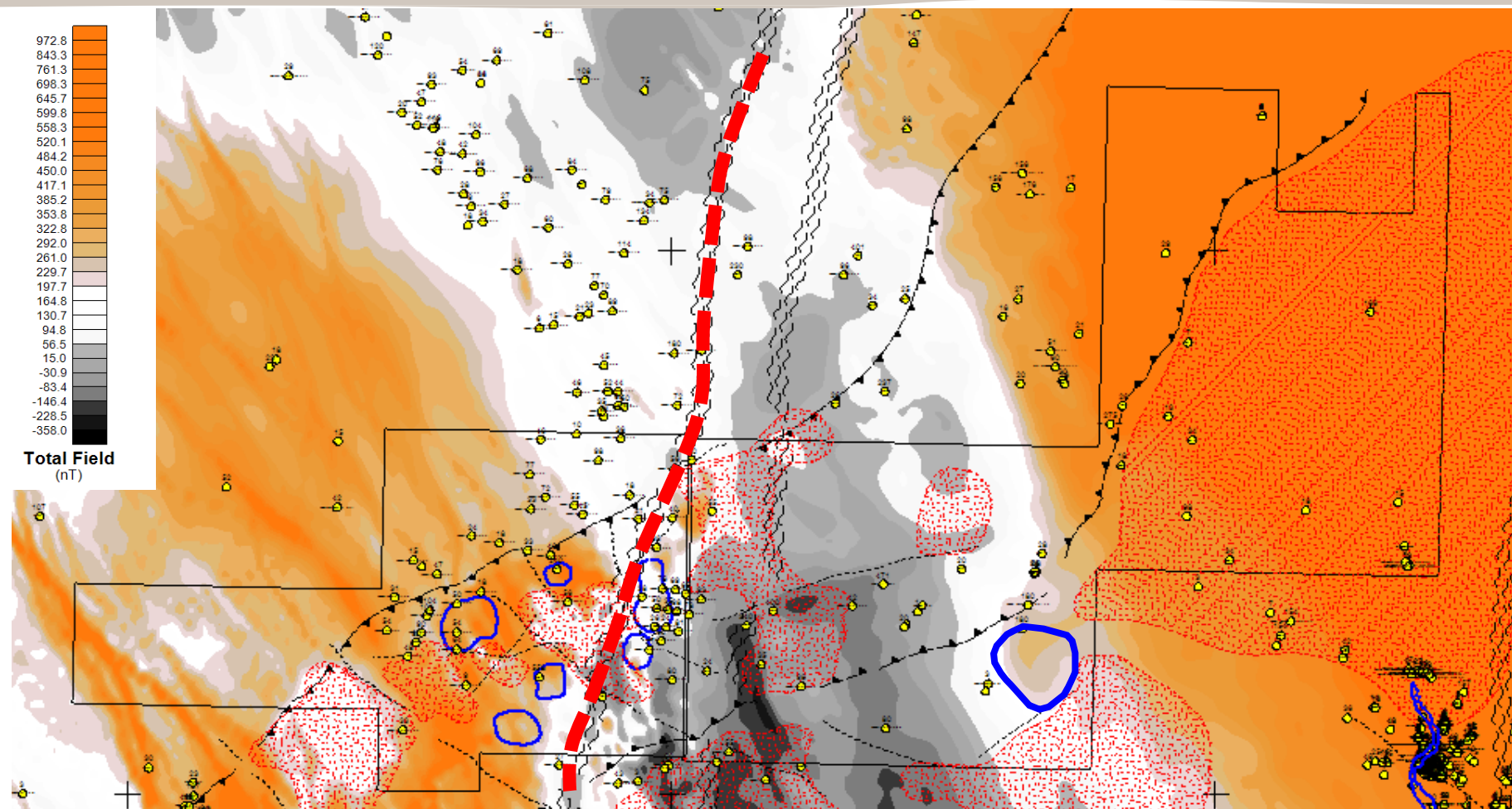
- Likely position of KSZ (Kalinjala Shear Zone) in red as one of the bounding structures to the Olympic Domain.
- Potential gravity targets in the Olympic Domain between NW/NE trending structures.

KINGSTON RESOURCES LIMITED – Six Mile Hill Project



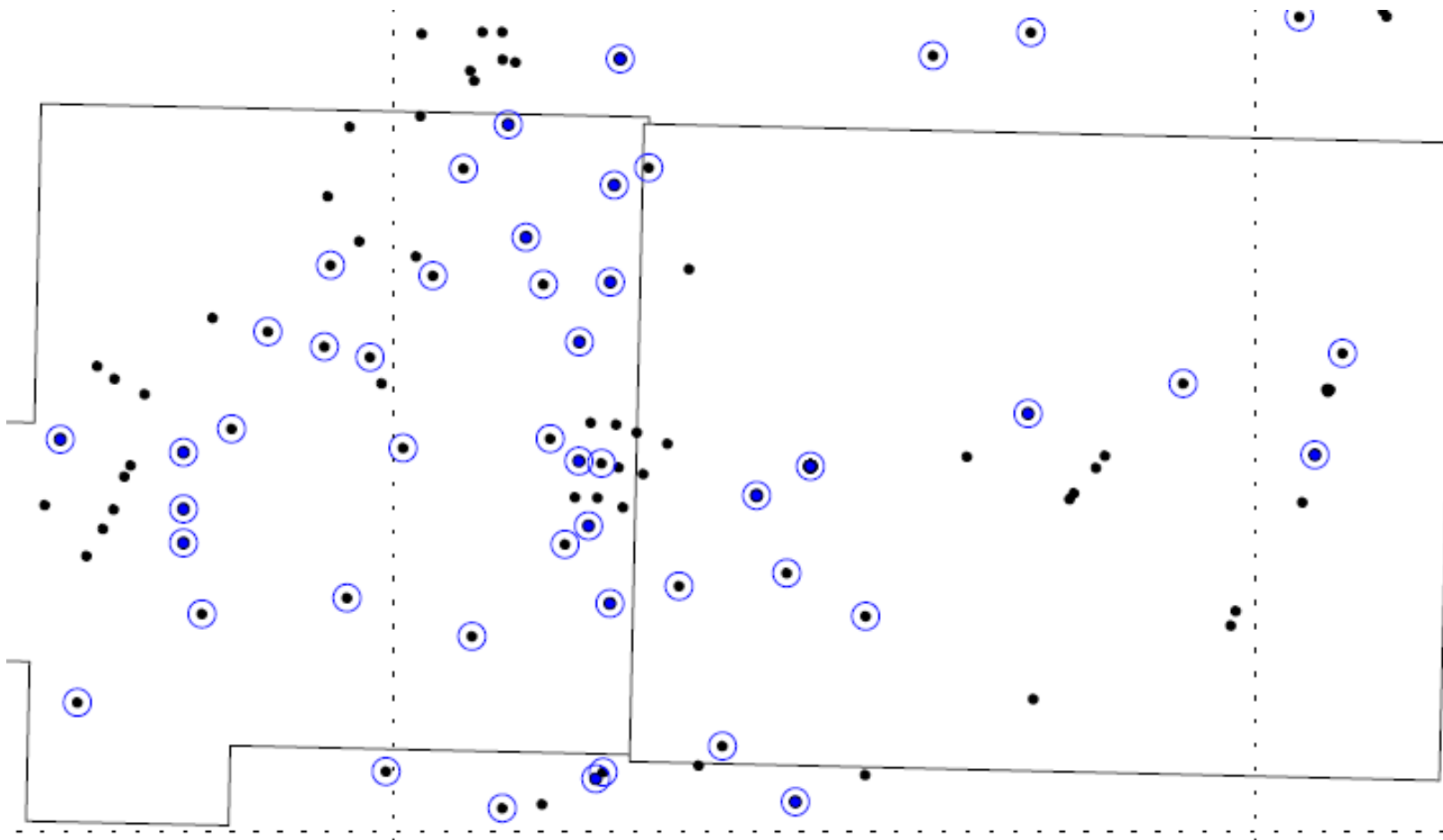
Residual Regional Bouguer gravity (2.67g/cc) with regional structure and interpreted felsic intrusives (Hiltiba equivalent?) in pink and gravity features in blue. Dominate NE/NW trending fault arrays. Tenement width ~60km.

KINGSTON RESOURCES LIMITED – Six Mile Hill Project



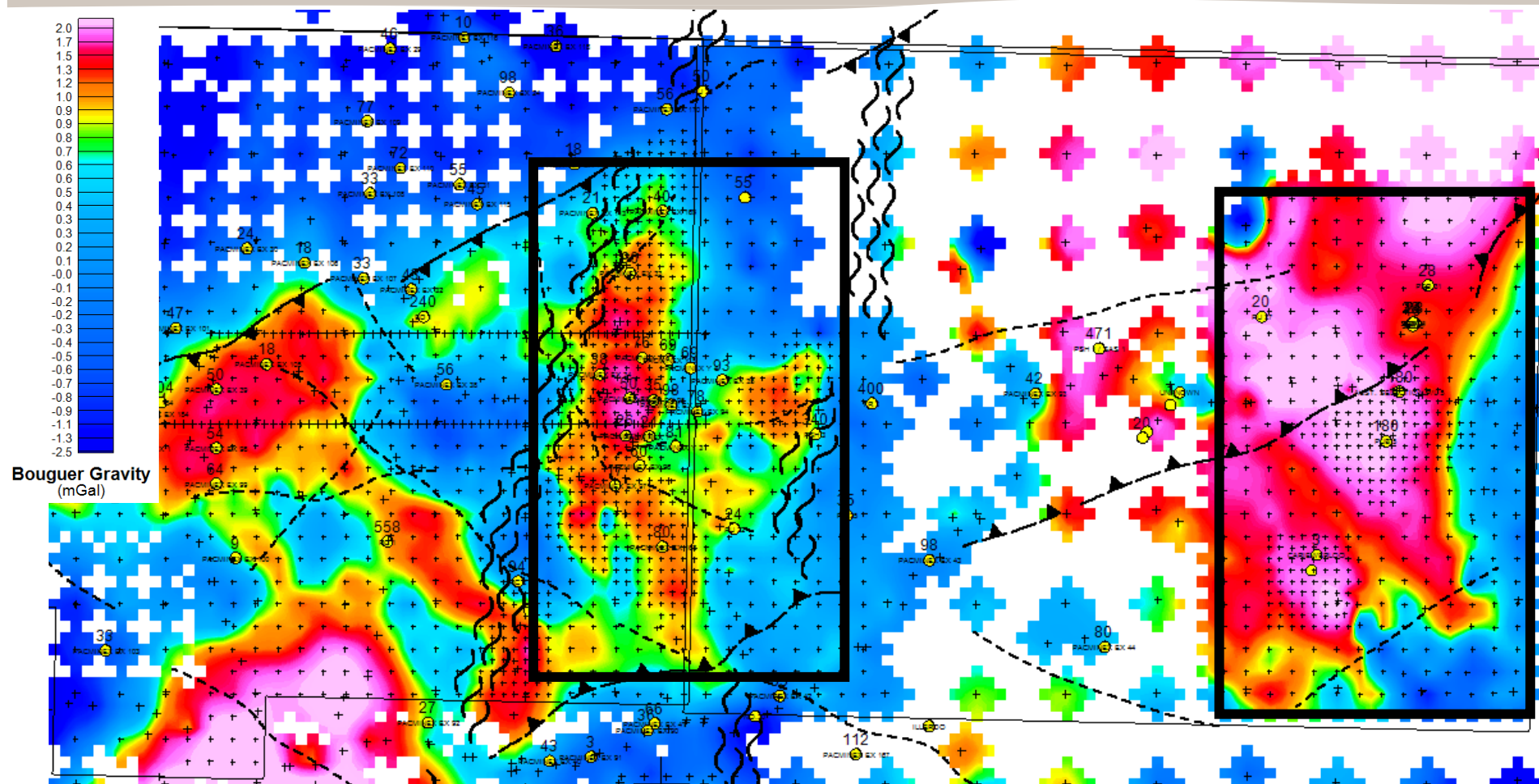
Residual Regional RTP Magnetics with regional structure and interpreted felsic intrusives (Hiltiba equivalent?) in pink and gravity features in blue. **Dominant NE/NW trending fault arrays with Olympic Domain Boundary(?) in red.** Tenement width ~60km.

KINGSTON RESOURCES LIMITED – Six Mile Hill Project



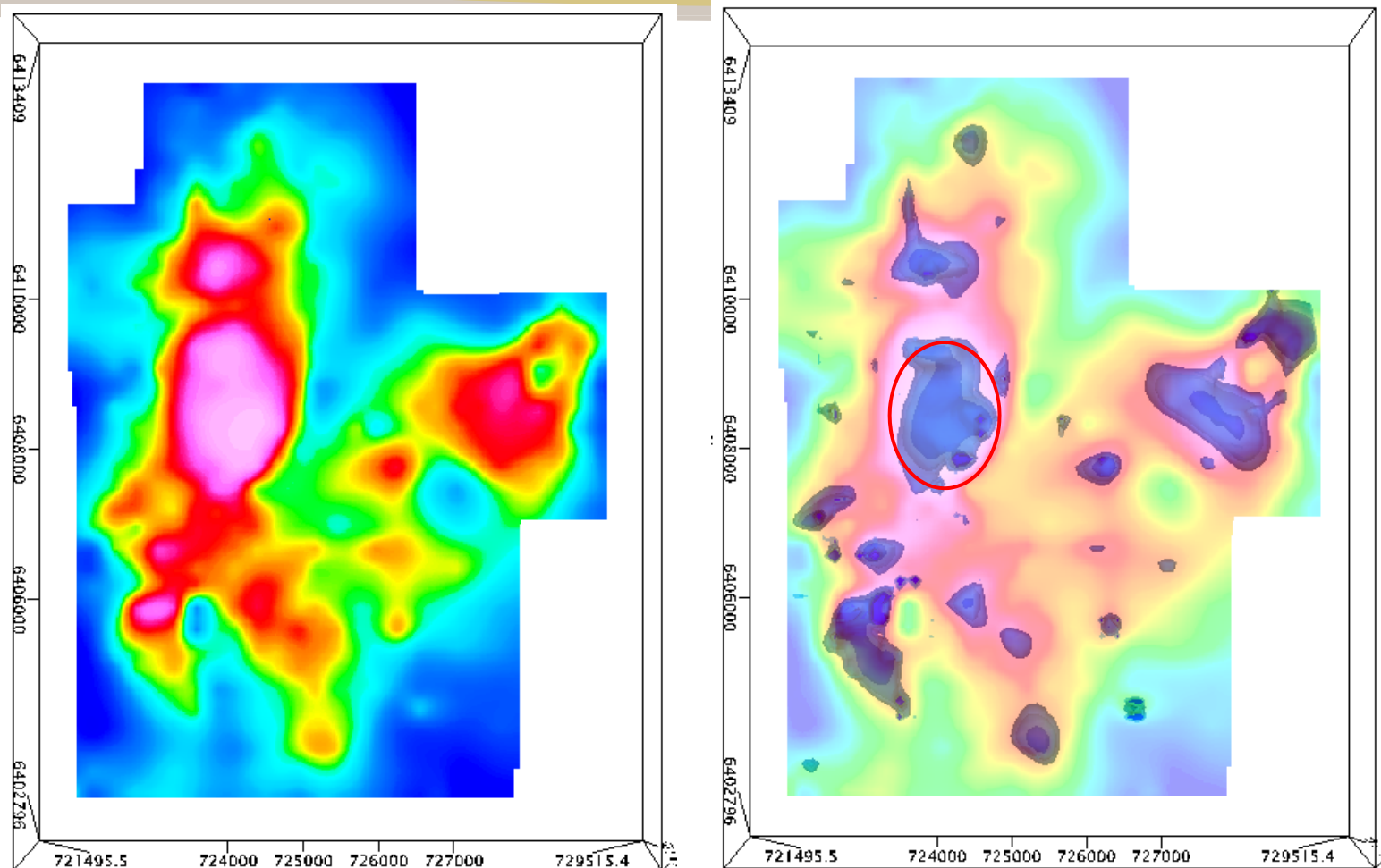
Open file and historical drill holes small dots, holes that have been assayed for copper circled in blue. Solid blue dots copper assays >250ppm. Figure width ~40km.

KINGSTON RESOURCES LIMITED – Six Mile Hill Project



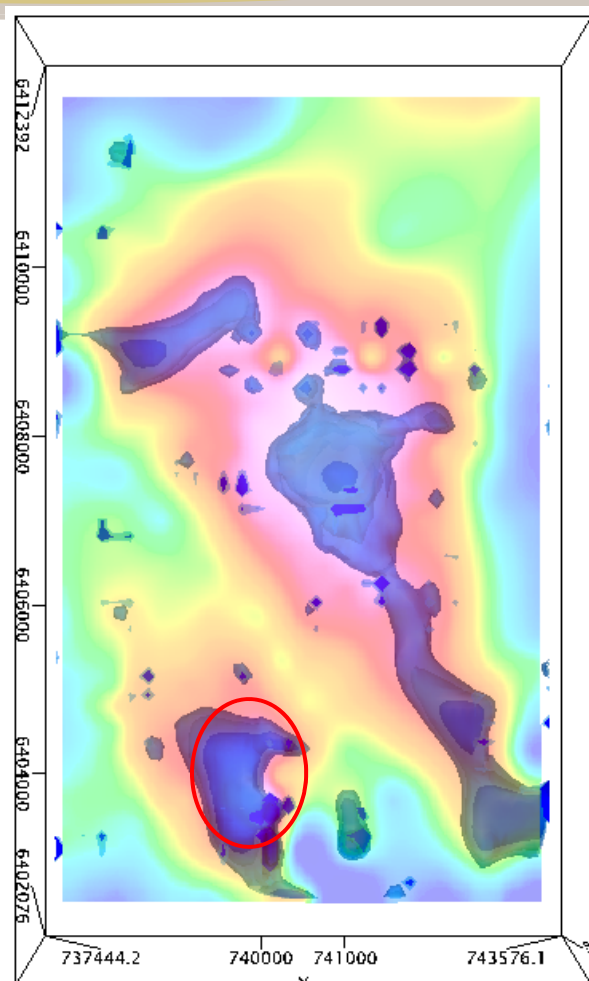
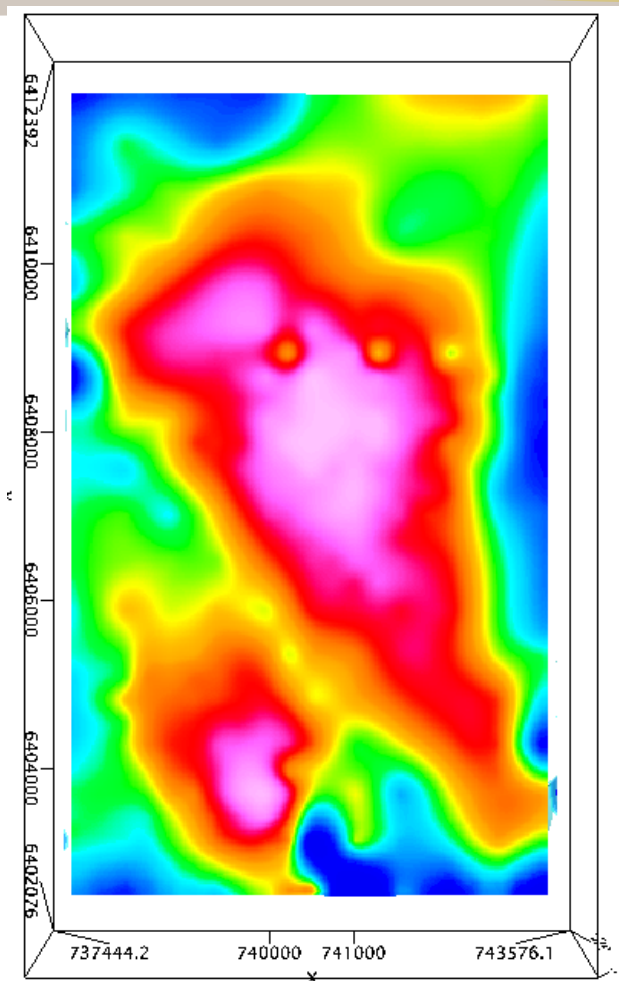
Residual (<2000m) Detailed Bouguer gravity (2.67g/cc) with regional structure. Dominate NE/NW trending fault arrays. Tenement width ~60km. Detailed station locations in black. Detailed gravity modelling areas in black rectangles

KINGSTON RESOURCES LIMITED – Six Mile Hill Project



Residual detailed Bouguer gravity (2.67g/cc) for the Six Mile area with preliminary 100m x 100m x 50m gravity model on the right. Gravity (blue) – Isosurfaces of density, +0.075g/cc light blue outer shell, +0.15g/cc in dark blue inner (0.15g/cc equivalent to Prominent Hill early modelling). Main target area shown in red

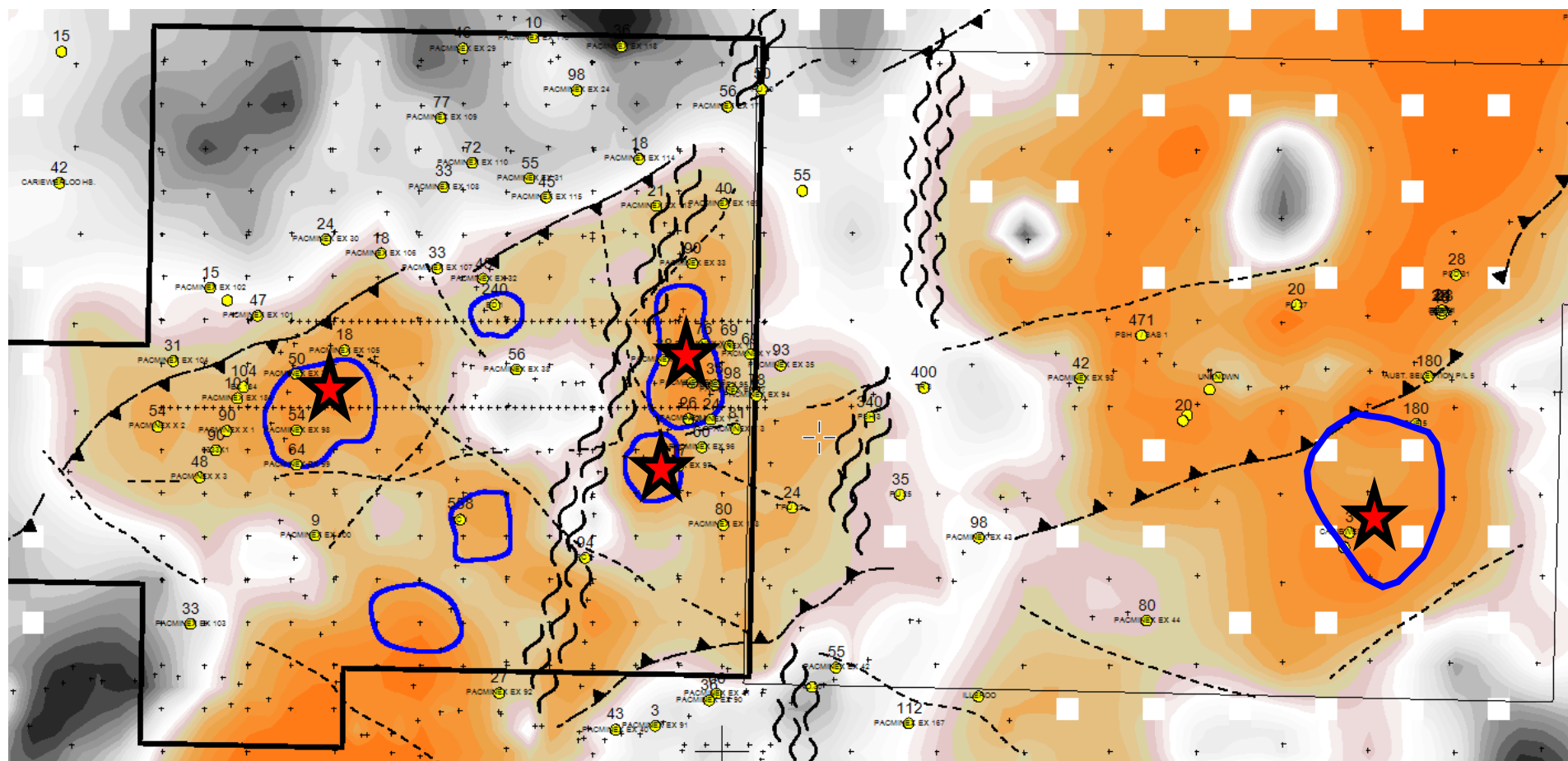
KINGSTON RESOURCES LIMITED – Six Mile Hill East



- Most of the 0.15 g/cc density iso-surfaces are <350m from surface.
- The large central feature, however, is ~1000m from surface

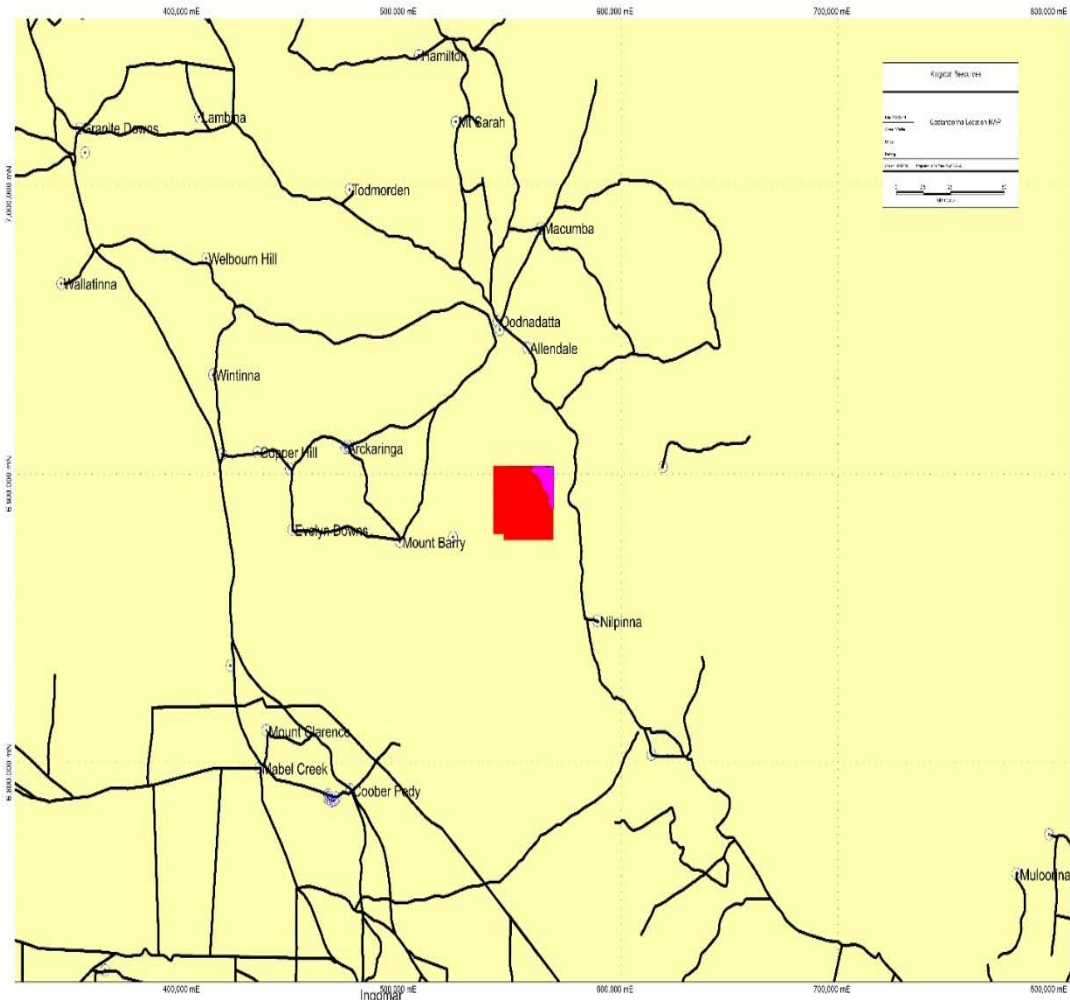
Residual detailed Bouguer gravity (2.67g/cc) for the Six Mile East area with preliminary 100m x 100m x 50m gravity model on the right. Gravity (blue) – Isosurfaces of density, +0.075g/cc light blue outer shell, +0.15g/cc in dark blue inner (0.15g/cc equivalent to Prominent Hill early modelling). Target area shown in red.

KINGSTON RESOURCES LIMITED – Six Mile Hill Project



Residual Regional Bouguer gravity (2.67g/cc) with drill holes in yellow with total depth above and gravity features from regional data in blue. Dominate NE/NW trending fault arrays. Conceptual drill hole locations annotated with stars. Figure width ~40km.

KINGSTON RESOURCES LIMITED – Cootanoorina EL4462

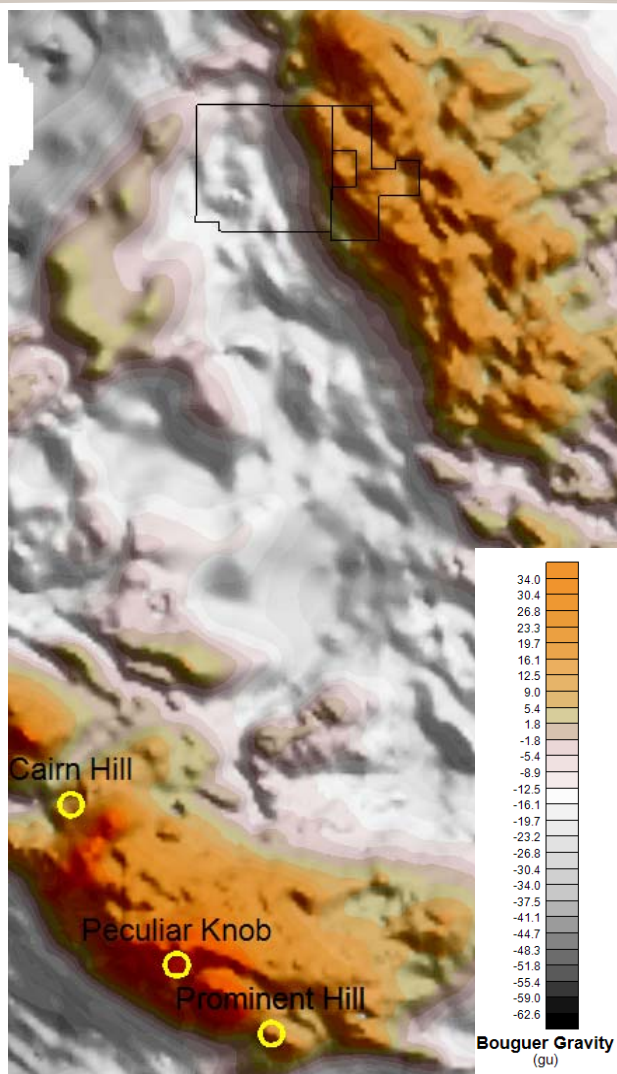


- The Cootanoorina Project lies approximately 60km to the south of the regional center of Oodnadatta in central outback South Australia
- The Cootanoorina project consists of EL 4462 and the newly granted 2 year EL 5487 immediately east of EL 4462 (both 100% owned)
- Ground based, geophysical gravity survey has been completed at the Cootanoorina project
- Kingston has signed Native Title Mining Agreements (NTMA) with local traditional land owners Arabana Aboriginal Corporation

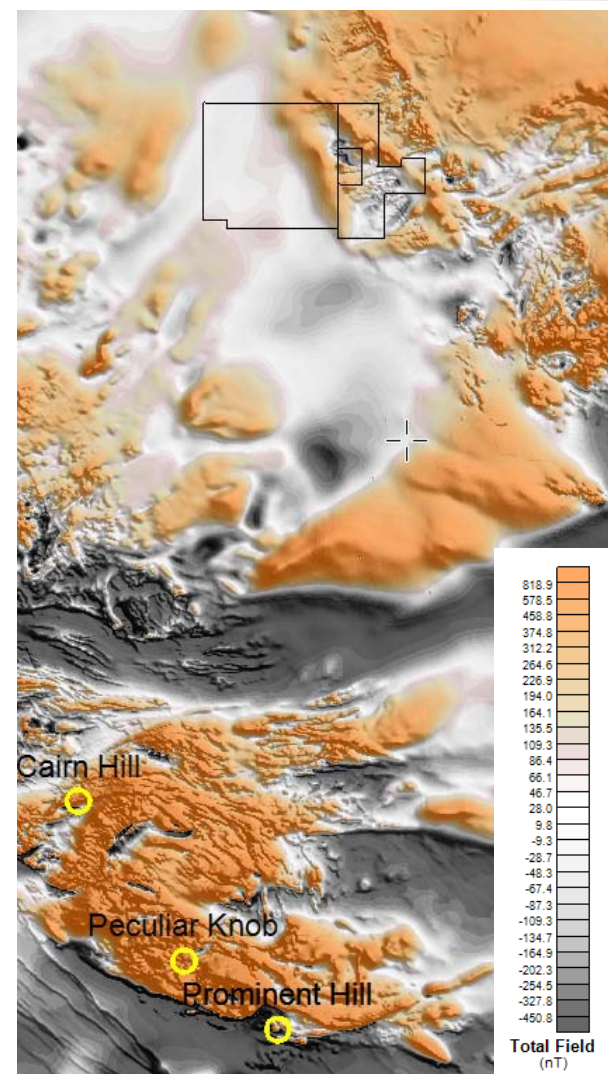
KINGSTON RESOURCES LIMITED – Cootanoorina Project

- The recently acquired detailed gravity has achieved the objective of better defining the depth and density of the northern target at Cootanoorina. In both cases the targets are shallower and more dense than models on 1km x 1km spaced data
- Preliminary density models will now be combined with the drilling/ outcrop geology data to construct cross sections near each of the target areas to understand the subsurface geology and define drill targets
- Initial focus on higher priority targets at Six Mile

KINGSTON RESOURCES LIMITED – Cootanoorina Project

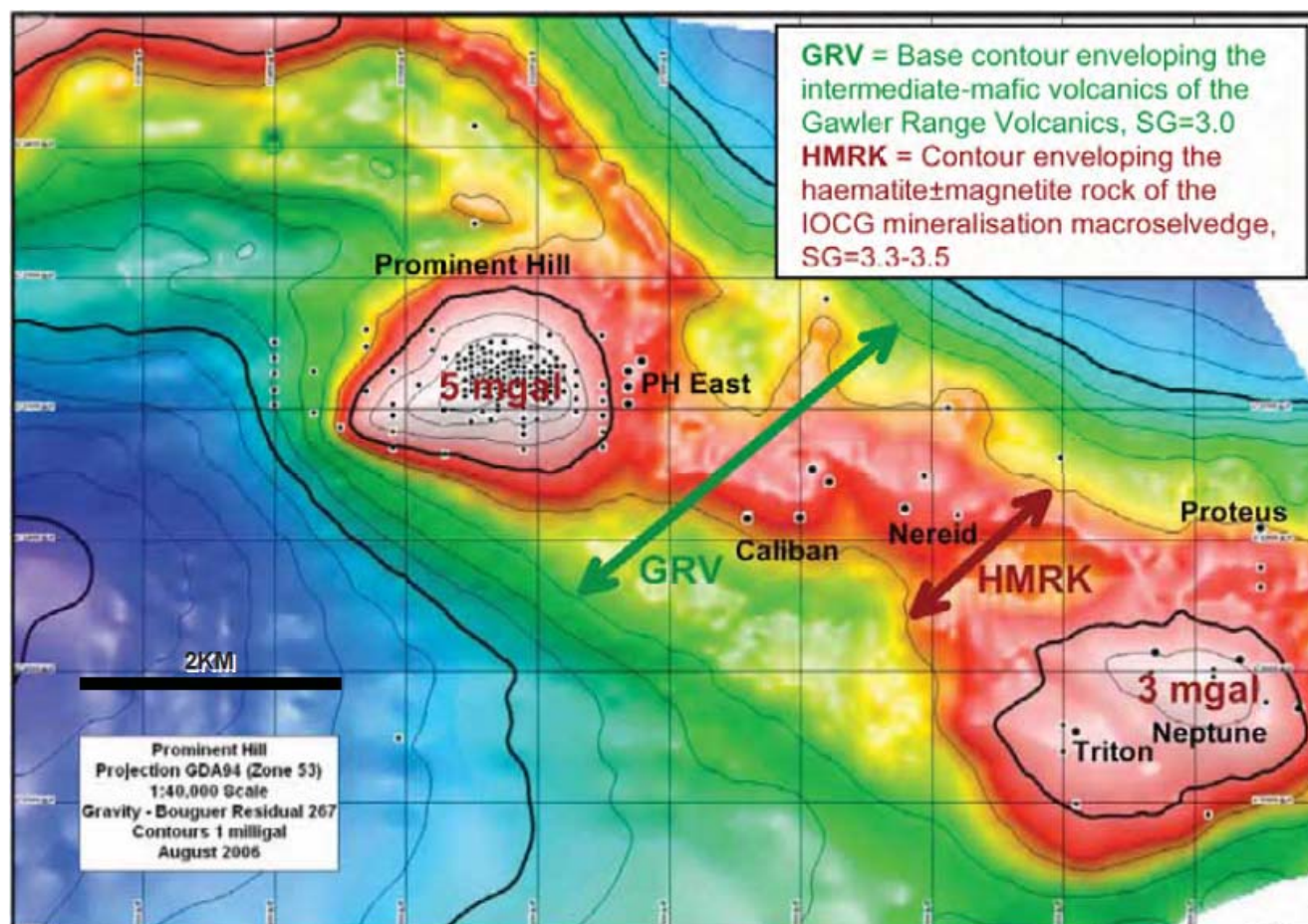


- Residual regional Bouguer gravity (2.67g/cc) with major deposit locations (left)



- Residual regional magnetic data with major deposit locations (right)

KINGSTON RESOURCES LIMITED – Prominent Hill

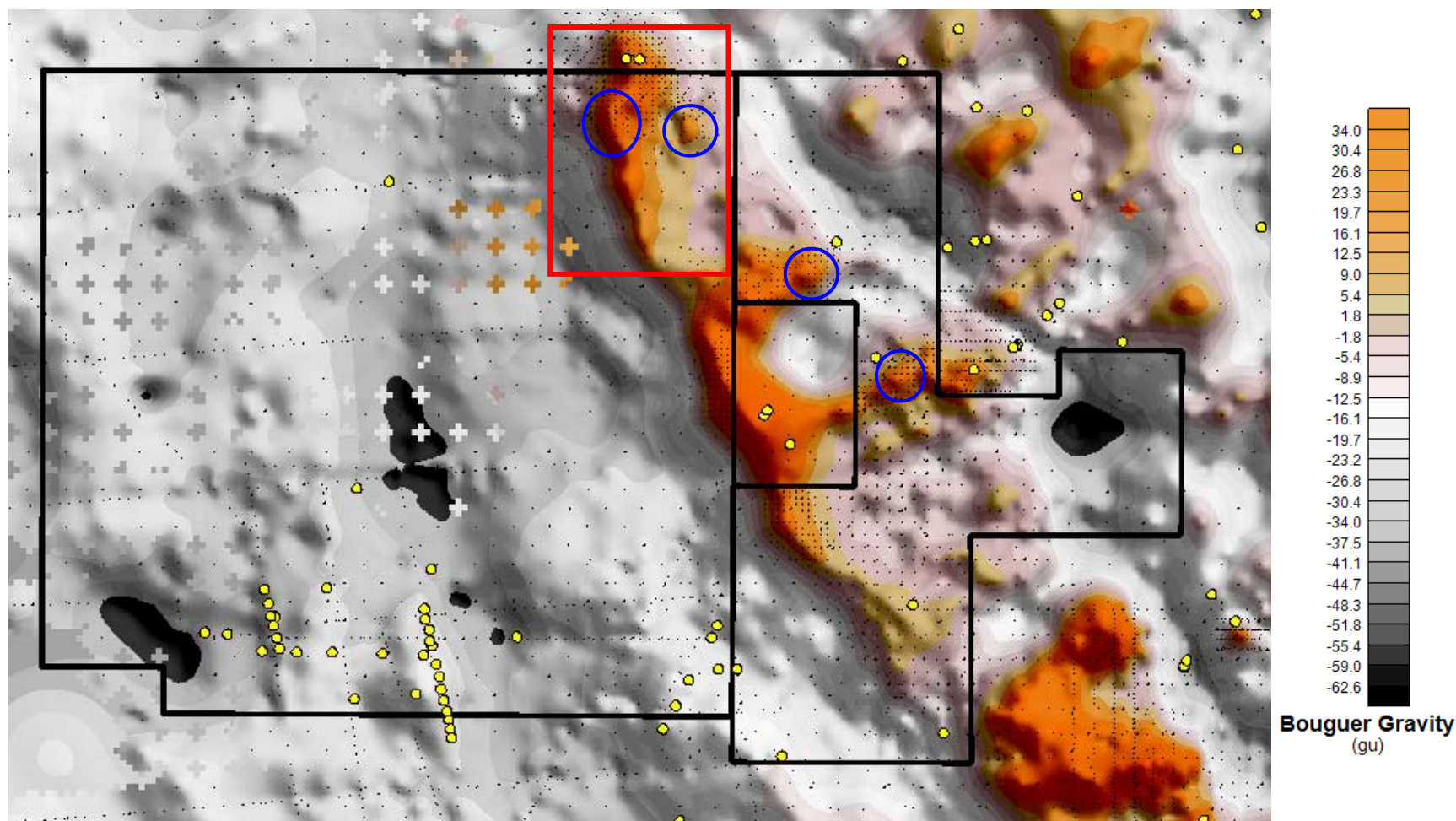


- Broader gravity high from Gawler Range Volcanics with isolated 1km x 1km highs from haematite/magnetite IOCG mineralisation

Taken from Oxiana presentation, 2006

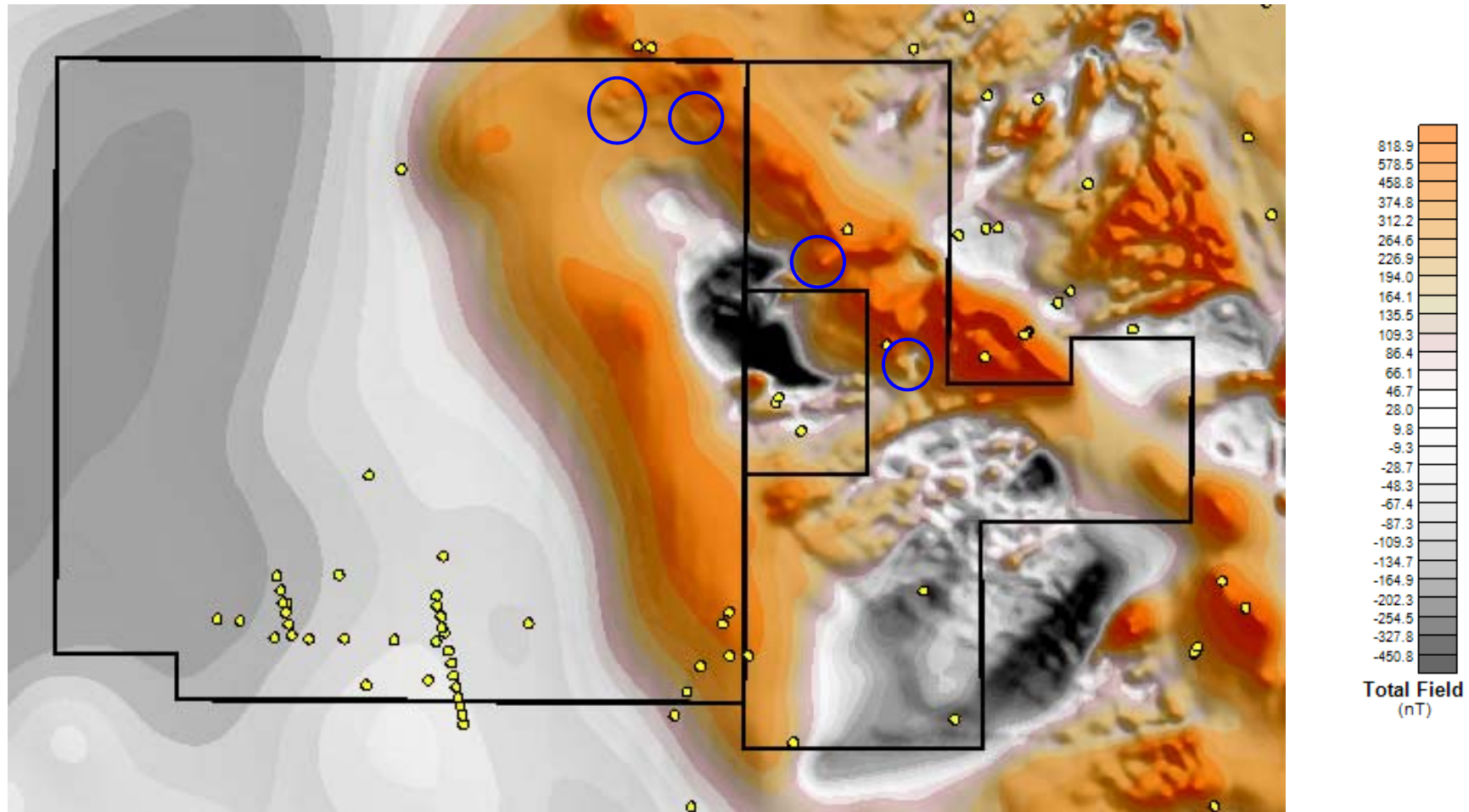
- Note: KSN has no interest in Prominent Hill

KINGSTON RESOURCES LIMITED – Cootanoorina Project



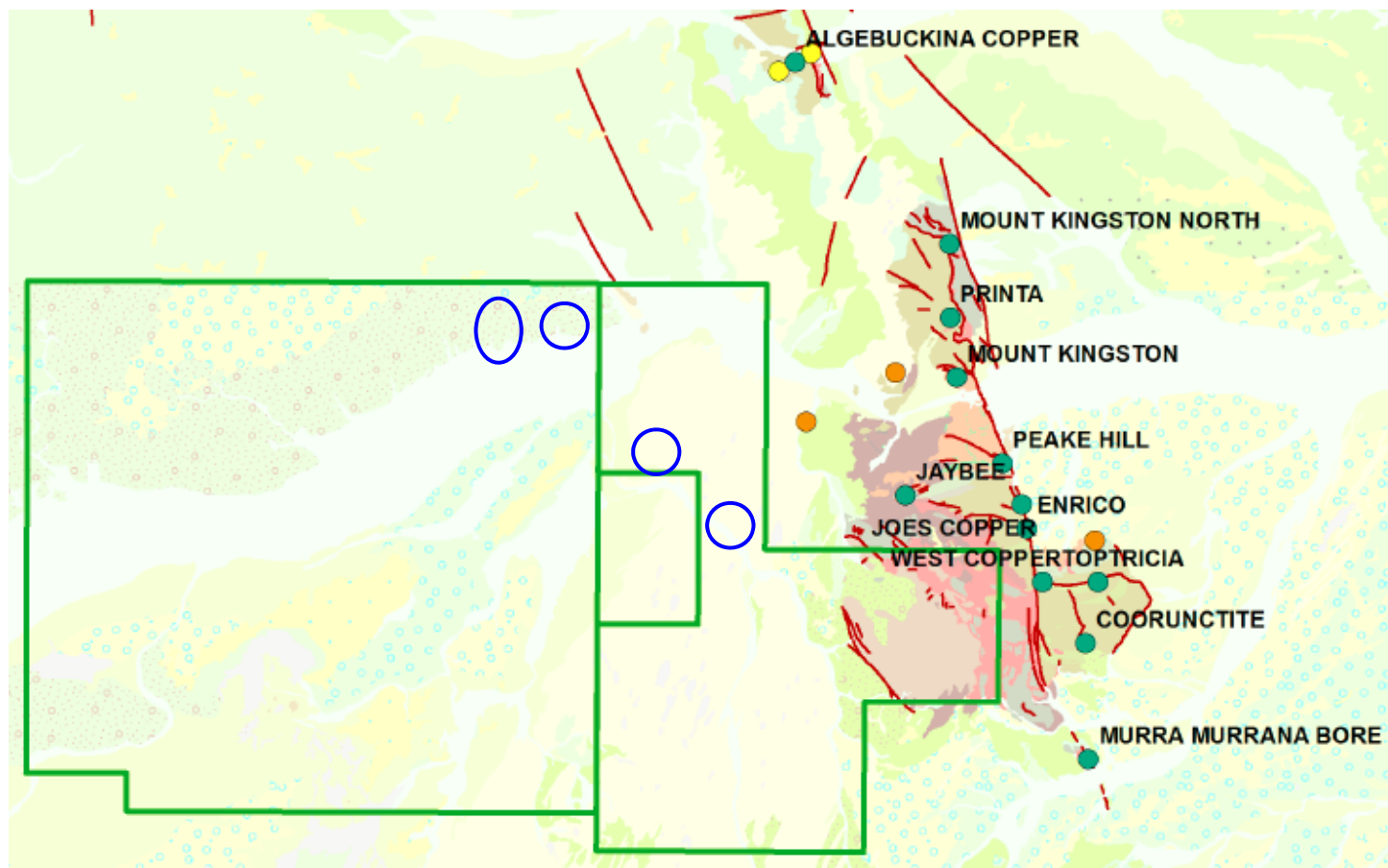
Residual Regional Bouguer gravity (2.67g/cc) with regional structure, gravity station location and location of historical drilling. **NE/NW trending faults**. Tenement width ~46km. Northern target area shown in red.

KINGSTON RESOURCES LIMITED – Cootanoorina Project

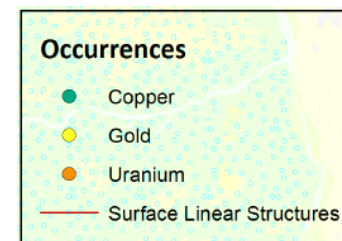


Residual Regional RTP Magnetics with regional structure and locations of historical drilling. **NE/NW trending faults**. Tenement width ~46km.

KINGSTON RESOURCES LIMITED – Cootanoorina Project

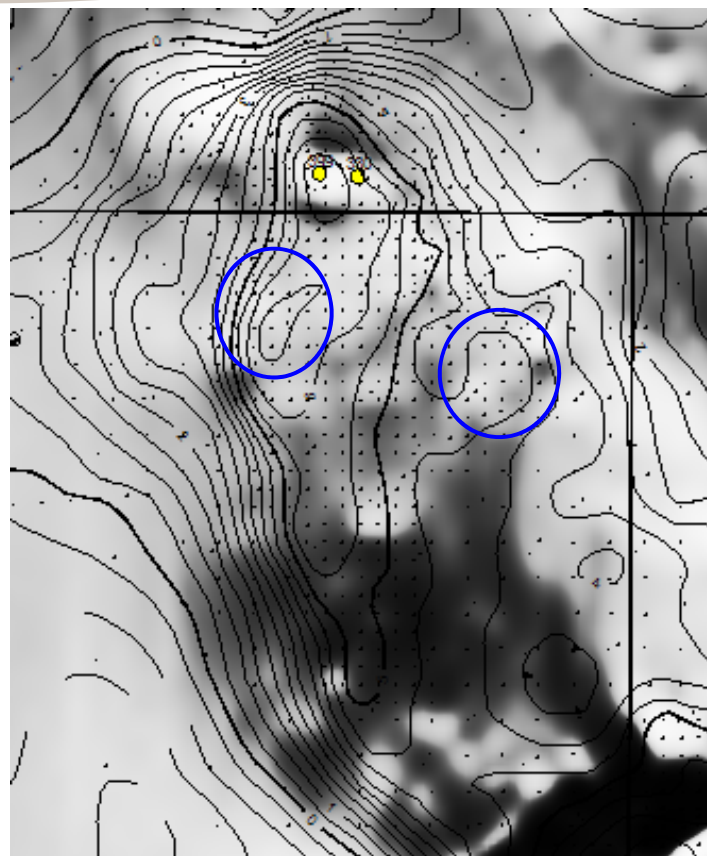
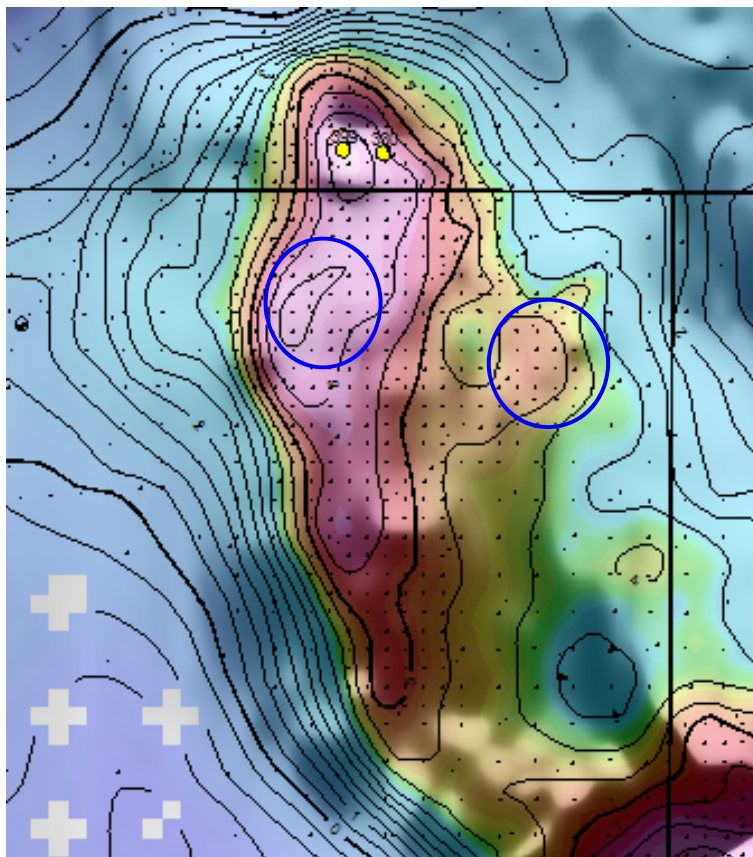


- Cu/Au occurrences in older Proterozoic Peak and Dennison Metamorphics
- Looking for IOCG mineralisation along NW oriented structure under shallow cover to the west



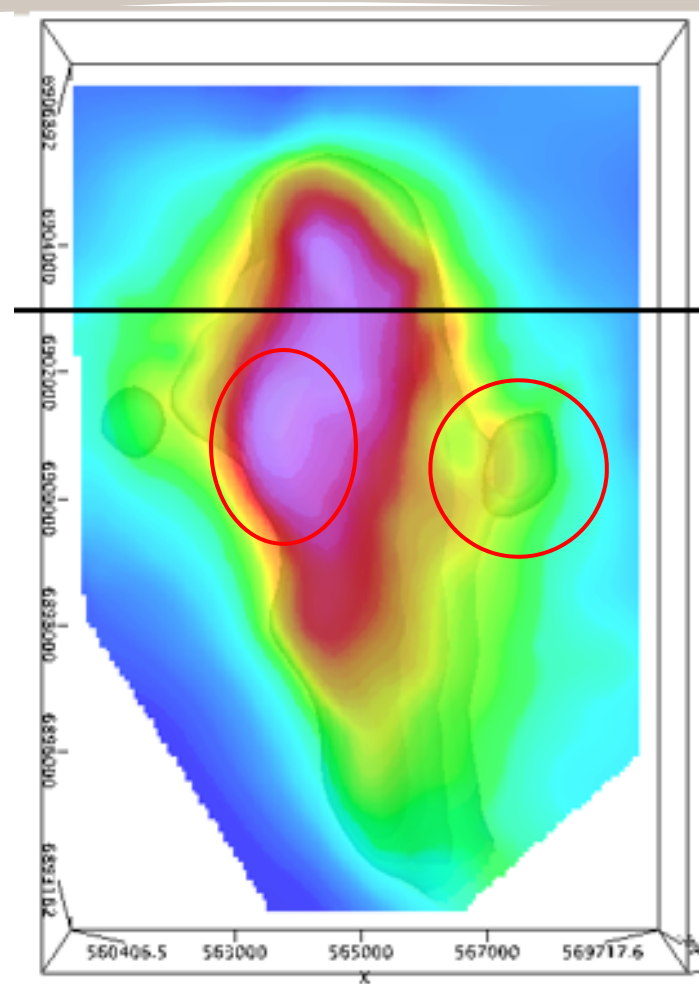
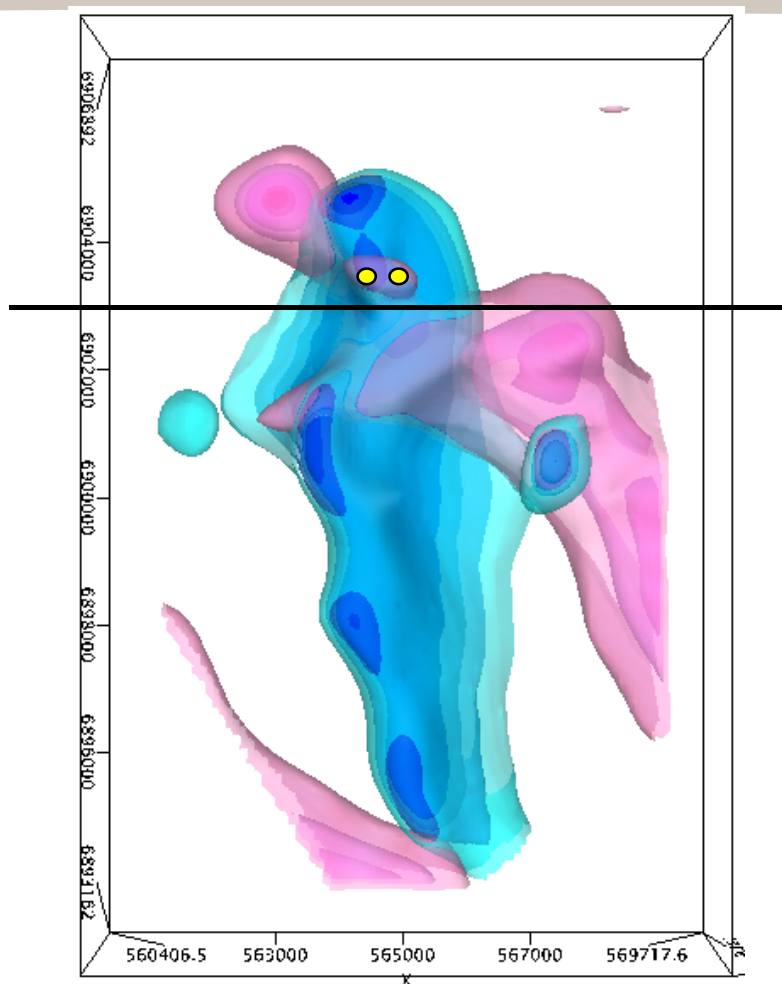
Surface geology, target locations with mineral occurrences. Tenement width ~46km.

KINGSTON RESOURCES LIMITED – Cootanoorina North



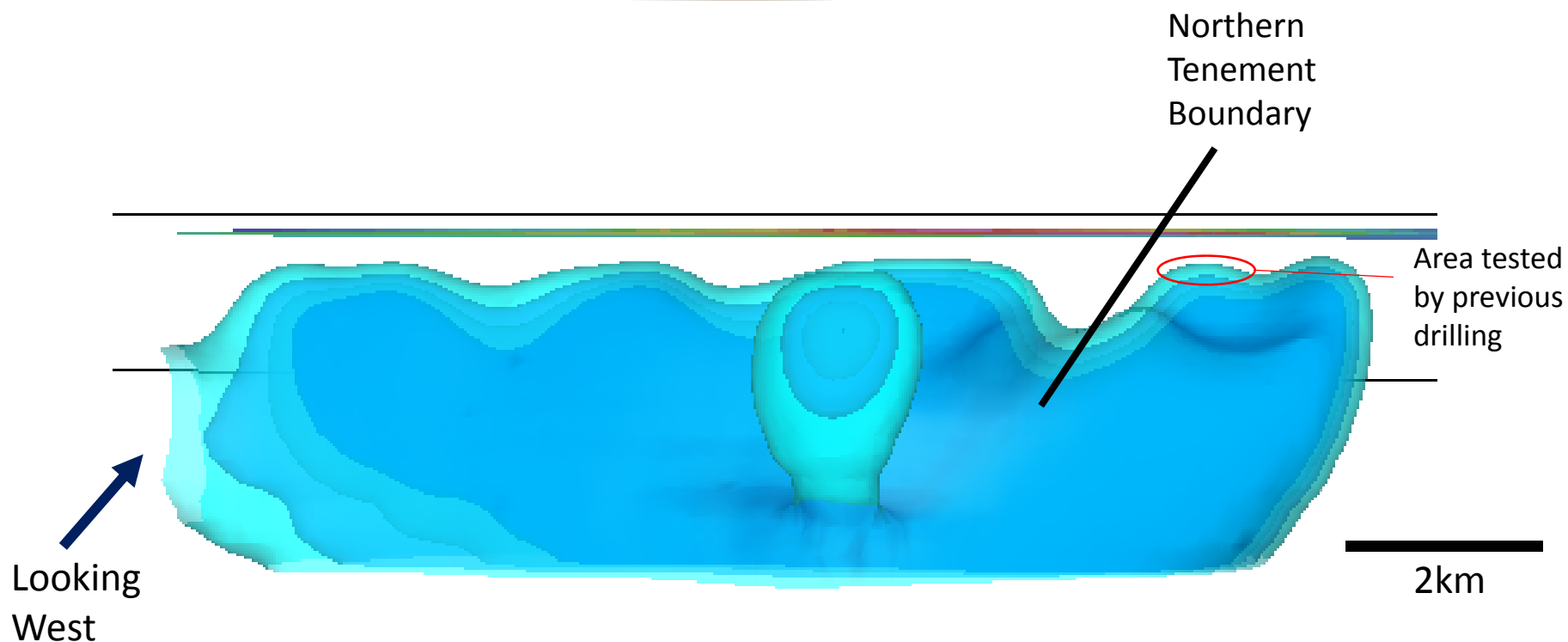
Residual Bouguer gravity (2.67 g/cc) colour image and contours for the northern target area with government and recently acquired gravity stations shown in black. Magnetics in grey scale shown in black and white image with gravity contours as overlay. Shallow magnetic features are associated with gravity highs (volcanics in drilling to north). Gravity features of interested in zones of subtle magnetic response.

KINGSTON RESOURCES LIMITED – Cootanoorina Project



Gravity (blue)– Isosurfaces of density, $+0.15\text{g/cc}$ in dark blue (depth to top $\sim 350\text{m}$ at shallowest). Magnetics (pink) – Isosurfaces of susceptibility, $+100 \times 10^{-3} \text{ SI}$ in pink. Potential targets shown in red.

KINGSTON RESOURCES LIMITED – Cootanoorina Project



Gravity (blue)– Isosurfaces of density, +0.15g/cc in dark blue (depth to top ~350m at shallowest). Isolated gravity feature shown in the centre of the figure and other target directly behind it on the feature with significant strike length

KINGSTON RESOURCES LIMITED- Disclaimer

This presentation has been prepared by Kingston Resources Limited (KSN or the Company). It contains general information about the Company's activities current as at the date of the presentation. The information is provided in summary form and does not purport to be complete. This presentation is not to be distributed (nor taken to have been distributed) to any person in any jurisdictions to whom an offer or solicitation to buy shares in the Company would be unlawful. Any recipient of the presentation should observe any such restrictions on the distribution of this presentation and warrants to the Company that the receipt of the presentation is not unlawful. It should not be considered as an offer or invitation to subscribe for or purchase any securities in the Company or as an inducement to make an offer or invitation with respect to those securities. No agreement to subscribe for securities in the Company will be entered into on the basis of this presentation or any information, opinions or conclusions expressed in the course of this presentation.

This presentation is not a prospectus, product disclosure document or other offering document under Australian law or under any other law. It has been prepared for information purposes only. This presentation contains general summary information and does not take account the investment objectives, financial situation and particular needs of any individual investor. It is not financial product advice and investors should obtain their own independent advice from qualified financial advisors having regards to their objectives, financial situation and needs. Neither KSN nor any of their related bodies corporate is licensed to provide financial product advice. This presentation and information, opinions or conclusions expressed in the course of this presentation contains forecasts and forward looking information. Such forecasts, projections and information are not a guarantee of future performance, involve unknown risks and uncertainties. Actual results and developments will almost certainly differ materially from those expressed or implied.

There are a number of risks, both specific to KSN and of a general nature which may affect the future operating and financial performance of KSN and the value of an investment in KSN. A summary of those risks is contained in the KSN Rights Issue Prospectus dated 4 November 2014 at sections 1.4 and 5. <http://www.kingstonresources.com.au/prospectus>

You should not act or refrain from acting in reliance on this presentation, or any information, opinions or conclusions expressed in the course of this presentation. This presentation does not purport to be all inclusive or to contain all information which its recipients may require in order to make an informed assessment of the prospects of KSN. You should conduct your own investigation and perform your own analysis in order to satisfy yourself as to the accuracy and completeness of the information, statements and opinions contained in this presentation before making any investment decision. Recipients of this presentation must undertake their own due diligence and make their own assumptions in respect of the information contained in this presentation and should obtain independent professional advice before making any investment decision based on this information. No representation or warranty, express or implied, is made in relation to the fairness, accuracy or completeness of the information, opinions and conclusions expressed in the course of this presentation. To the maximum extent permitted by law, no representation warranty, express or implied, is made and to the maximum extent permitted by law, no responsibility or liability is accepted by the Company or any of its officers, employees, agents or consultants or any other person as to the adequacy, accuracy, completeness or reasonableness of the information in this presentation. To the maximum extent permitted by law, no responsibility for any errors or omissions from this presentation whether arising out of negligence or otherwise is accepted. An investment in the shares is to be considered speculative.

This presentation and information, opinions and conclusions expressed in the course of this presentation should be read in conjunction with KS's other periodic and continuous disclosure announcements lodged with the ASX.

KINGSTON RESOURCES LIMITED- Competent Person

Competent Person Statement

The information in this presentation that relates to results of geophysical exploration is based upon information compiled by Mr Barry Bourne, who is employed as a Consultant to the Company through geophysical consultancy Terra Resources Pty Ltd. Mr Bourne is a fellow of the Australian Institute of Geoscientists and a member of the Australian Society of Exploration Geophysicists. He has proper and relevant experience with the styles of mineralisation as well as the kinds of mineral deposits under consideration and activities undertaken. This is sufficient to qualify him as a “Competent Person” as defined in the 2012 Edition of the Joint Ore Reserves Committee (JORC) Australasian Code for Reporting of Exploration Results, Mineral Resources and Ore Reserves. Mr Bourne consents to the inclusion in the presentation of matters based on information in the form and context in which it appears.

The most recent JORC Code 2012 edition reporting information on the information contained within this Presentation can be reviewed in the KSN Exploration Update -October 2014 announcement as released to ASX 30th October 2014.