



ASX: KIN

- ✓ New discoveries
- ✓ Multi-pronged exploration program
- ✓ Belt-scale potential

## Increasing the momentum at Cardinia...

**45,000m of drilling underway for 2H 2020**  
**Exploration strategy update**

Investor Presentation – October 2020 | Andrew Munckton, Managing Director



# Disclaimer

This presentation is not a prospectus nor an offer for securities in any jurisdiction nor a securities recommendation. The information in this presentation is an overview and does not contain all information necessary for investment decisions. In making investment decisions in connection with any acquisition of securities, investors should rely on their own examination of Kin Mining NL and consult their own legal, business and/or financial advisers.

The information contained in this presentation has been prepared in good faith by Kin Mining NL, however no representation or warranty expressed or implied is made as to the accuracy, correctness, completeness or adequacy of any statements, estimates, opinions or other information contained in this presentation. To the maximum extent permitted by law, Kin Mining NL, its directors, officers, employees and agents disclaim liability for any loss or damage which may be suffered by any person through the use or reliance on anything contained in or omitted from this presentation.

## **Forward-Looking Statements**

This release contains “forward-looking information” that is based on the Company’s expectations, estimates and projections as of the date on which the statements were made. This forward-looking information includes, among other things, statements with respect to the feasibility and definitive feasibility studies, the Company’s business strategy, plan, development, objectives, performance, outlook, growth, cash flow, projections, targets and expectations, mineral reserves and resources, results of exploration and operational expenses. Generally, this forward-looking information can be identified by the use of forward-looking terminology such as ‘outlook’, ‘anticipate’, ‘project’, ‘target’, ‘likely’, ‘believe’, ‘estimate’, ‘expect’, ‘intend’, ‘may’, ‘would’, ‘could’, ‘should’, ‘scheduled’, ‘will’, ‘plan’, ‘forecast’, ‘evolve’ and similar expressions. Forward-looking information is subject to known and unknown risks, uncertainties and other factors that may cause the Company’s actual results, level of activity, performance or achievements to be materially different from those expressed or implied by such forward-looking information. Forward-looking information is developed based on assumptions about such risks, uncertainties and other factors set out herein, including but not limited to the risk factors set out in the Company’s Prospectus dated October 2014.

This list is not exhausted of the factors that may affect our forward-looking information. These and other factors should be considered carefully and readers should not place undue reliance on such forward-looking information. The Company disclaims any intent or obligations to revise any forward-looking statements whether as a result of new information, estimates, or options, future events or results or otherwise, unless required to do so by law. Statements regarding plans with respect to the Company’s mineral properties may contain forward-looking statements in relation to future matters that can be only made where the Company has a reasonable basis for making those statements. This announcement has been prepared in compliance with the JORC Code 2012 Edition and the current ASX Listing Rules. The Company believes that it has a reasonable basis for making the forward-looking statements in this announcement, including with respect to any mining of mineralised material, modifying factors and production targets and financial forecasts.

## **Competent Person’s Statement**

The information contained in this report relating to Resource Estimation results relates to information compiled by Mr Jamie Logan. Mr Logan is a member of the Australian Institute of Geoscientists. Mr Logan has sufficient experience of relevance to the styles of mineralisation and the types of deposit under consideration, and to the activities undertaken to qualify as a Competent Person as defined in the 2012 edition of the JORC “Australasian Code for Reporting of Exploration Results, Mineral Resources and Ore Reserves”.

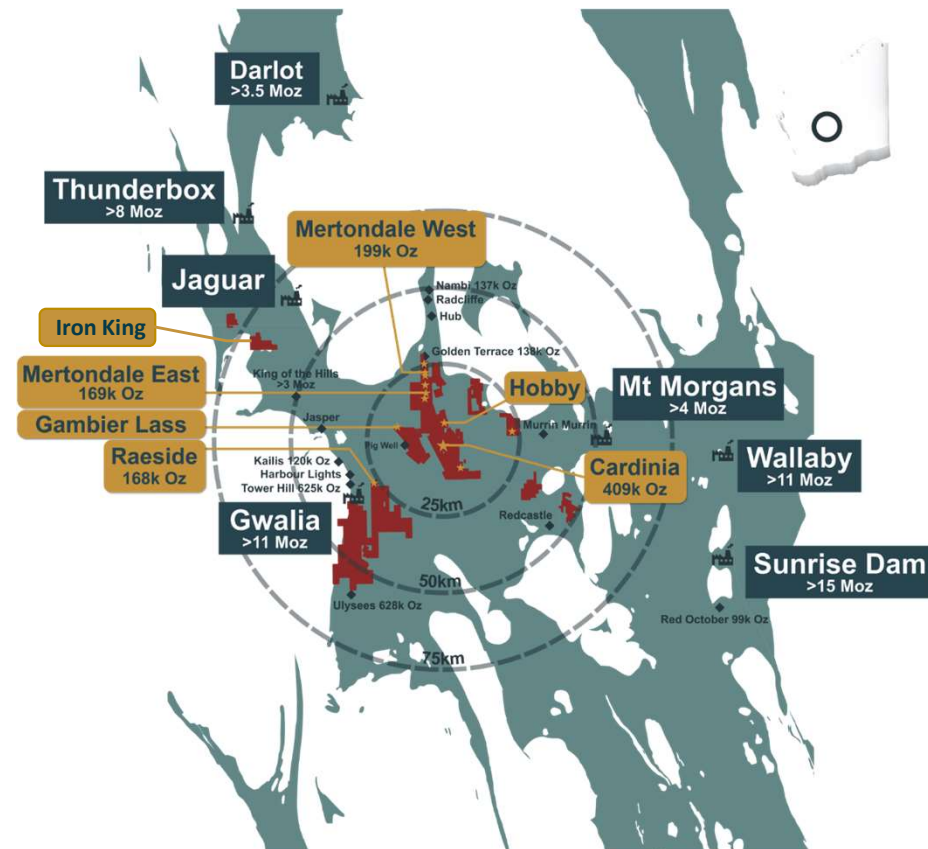
Mr. Logan consents to the inclusion in this report of the matters based on information in the form and context in which it appears.

The information contained in this report relating to exploration results relates to information compiled or reviewed by Glenn Grayson. Mr. Grayson is a member of the Australasian Institute of Mining and Metallurgy and is a full time employee of the company. Mr. Grayson has sufficient experience of relevance to the styles of mineralisation and the types of deposit under consideration, and to the activities undertaken to qualify as a Competent Person as defined in the 2012 edition of the JORC “Australasian Code for Reporting of Exploration Results, Mineral Resources and Ore Reserves”.

Mr. Grayson consents to the inclusion in this report of the matters based on information in the form and context in which it appears.

# Kin Mining – A New Chapter of Growth and Opportunity

- 100%-owned **Cardinia Gold Project**, Western Australia
- Strategic **436km<sup>2</sup> land package** 30km from Leonora – a Tier-1 Australian gold mining district (multi-million ounce deposits)
- **Existing 945koz JORC Resource** hosted in supergene and oxide dominant ore zones
- Focus has shifted from development (2019 PFS) to exploration targeting **new, larger, higher grade gold discoveries**
- Prioritising areas **close to the proposed Cardinia processing plant**
- Significant new discoveries already made at **East Lynne, Cardinia Hill, Lewis East and Helens East** in first-pass drilling
- **Up to 45,000m** of RC, diamond and air-core drilling planned in 2H CY2020 – **strong upcoming news-flow**
- Expanding understanding of **Major mineralised system**
- **Strong shareholder support**



Recent drilling has highlighted the potential for a much larger mineralised system at Cardinia. This is the focus of current and planned exploration.



# Corporate Overview

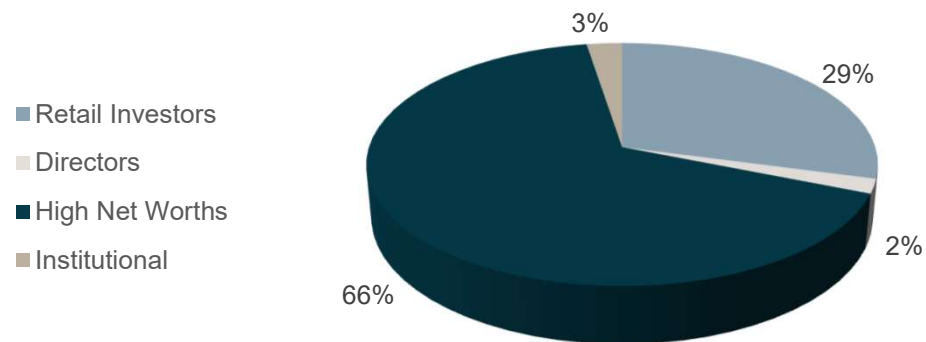
## ASX: KIN

Share price (9 October 2020)	A\$0.19
Ordinary shares on issue	700.0M
Options (exercise \$1.00 - \$1.25)	10.0M
Market Capitalisation (undiluted)	\$133M
Cash (30 September 2020)	\$6.0M
Debt	Nil
Liquidity (avg. daily traded shares)	1.14M

## Board of Directors

<b>Andrew Munckton</b>	Managing Director
<b>Joe Graziano</b>	Chairman
<b>Brian Dawes</b>	Non-Executive Director
<b>Nicholas Anderson</b>	Non-Executive Director
<b>Hansjoerg Plaggemars</b>	Non-Executive Director

## Shareholders



## 12-month Share Price





# Technical and Geology Team

## Technical Management

### Andrew Munckton

Managing Director and CEO

- Geologist with 35+ years experience, technical and operations, underground and open pit
- Previous Managing Director of Avalon Minerals, General Manager Gindalbie Metals
- Previously General Manager of Operations Paddington, Kanowna Belle and Kundana

### Glenn Grayson

Exploration Manager

- Geologist with 23+ years experience
- Extensive experience with resource development and extension at Kundana, Kanowna Belle, Fosterville
- Previous senior positions with Northern Star Resources, Barrick and Northgate Minerals

### John Kelly

Engineering Manager

- Engineer with 30+ years industry experience
- Extensive experience with operations and contract mining in both open pit and underground
- Previous senior positions with Resolute, Roche, Alcoa, Mt Gibson, Sinosteel Midwest

## Key consultants

### Entech

- Respected industry consultants
- Specialists in Open Pit Optimisation, mine design and scheduling

### Como Engineers

- Established industry consultants with long history
- Delivering process engineering, metallurgy and construction services

### Jon Standing

- Expert stratigraphic structural and economic geologist
- Comprehensive mapping of the company Tenure

### Southern Geoscience

- Consultancy assisting with geophysical advice and strategy around acquiring the appropriate field data

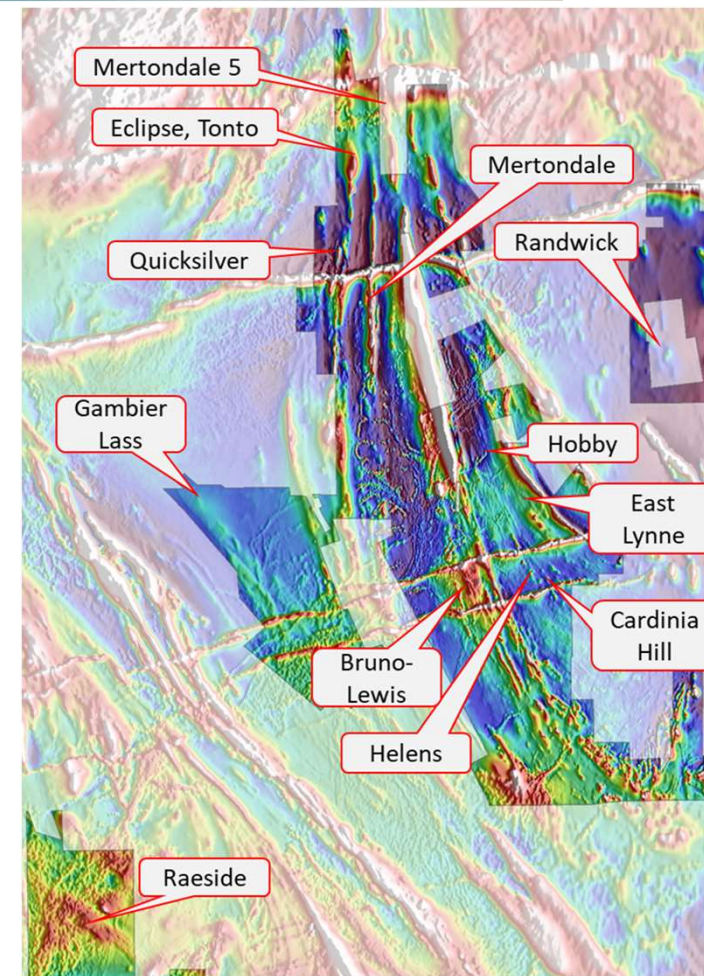
### Nigel Brand

- Geochemical consultant specialising in exploration geochemistry

# The Opportunity – Minerie Greenstone Belt, WA

- Controlling 436km<sup>2</sup> land-holding in an under-explored greenstone belt, which has yielded multiple discoveries
- Acquired in late 2014 from administrator of Navigator Resources - Exploration over the past decade has focused on areas around the known deposits, limited by a strategy of seeking “just enough to feed the mill” with shallow drilling and no detailed understanding of the gold mineralised system
- A new project wide, data-driven, bottom-up approach has been adopted to target potential new zones of gold mineralisation across the tenement package
- Large alteration systems related to gold mineralisation have been identified throughout the area
- Detailed understanding of the mineralising system is developing as we build up the science and test our models systematically

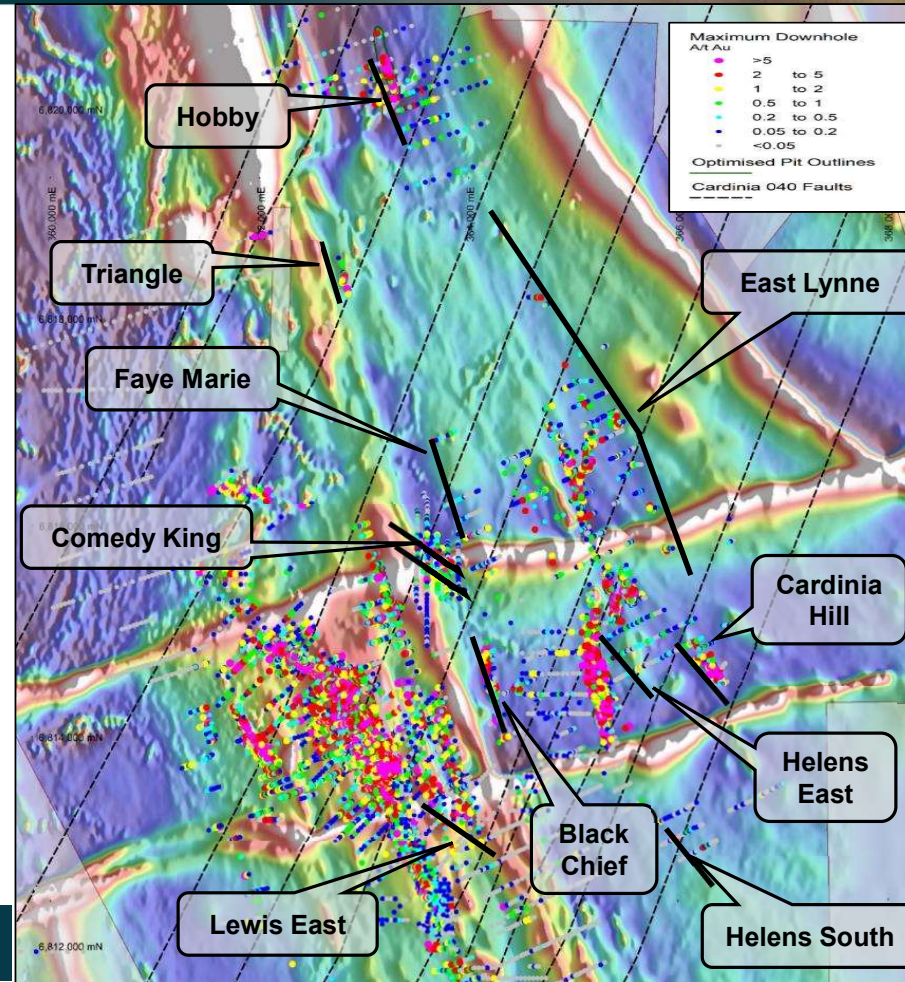
Potential for large mineralised system identified within extensive, under-explored greenstone belt. Exploration still at an early stage.



# Cardinia – Multiple Projects Advancing in Parallel

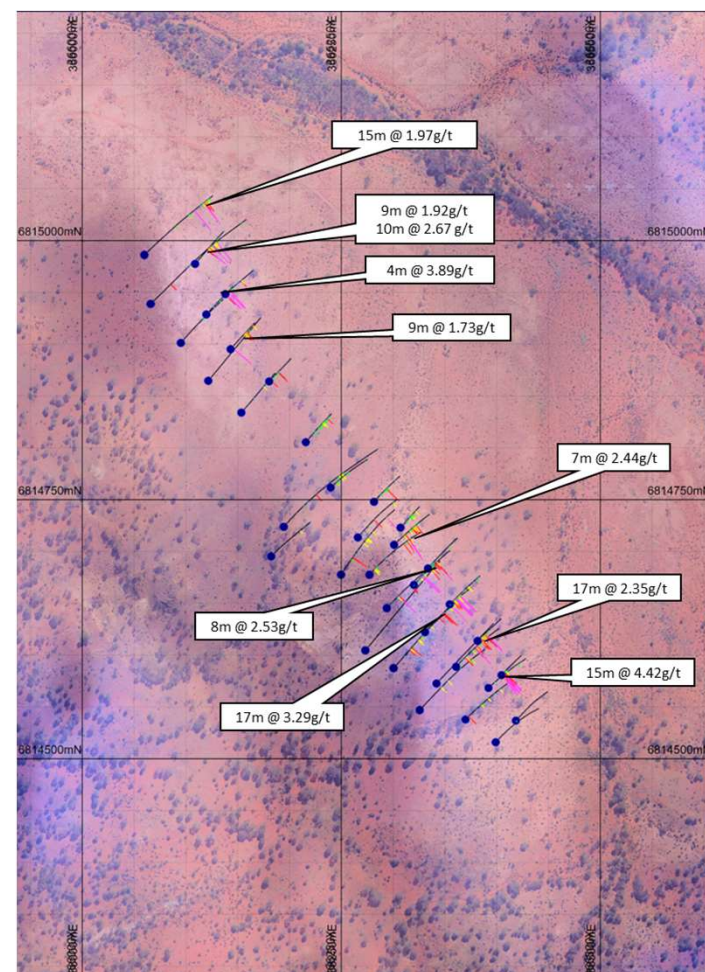
- **Phase 1.** Auger and regional AC drilling from December 2019 to June 2020 discovered several new deposits.
- **Phase 2.** AC follow up and initial RC led to discovery of Cardinia Hill, Lewis East and Comedy King.
- **Phase 3.** Program with focus on a combination of:
  - Broad spaced AC drilling at large scale targets - East Lynne
  - Initial RC drilling of new targets generated in the June quarter at Black Chief, Faye Marie, Helens East and Helens South
  - Close spaced RC and DD drilling of advanced deposits - Cardinia Hill, Lewis East, Hobby.
- Diamond drilling of deeper, conceptual and geophysical targets at East Lynne co-funded by EIS grant.
- Mineral Resource estimates in the December quarter:
  - Cardinia Hill
  - Lewis East and Hobby
  - All other deposits at A\$2600 rather than \$2000 in the previous estimate

Cardinia is a large mineralised system with multiple deposits



# Cardinia Hill – Broad, Shallow Gold Intercepts

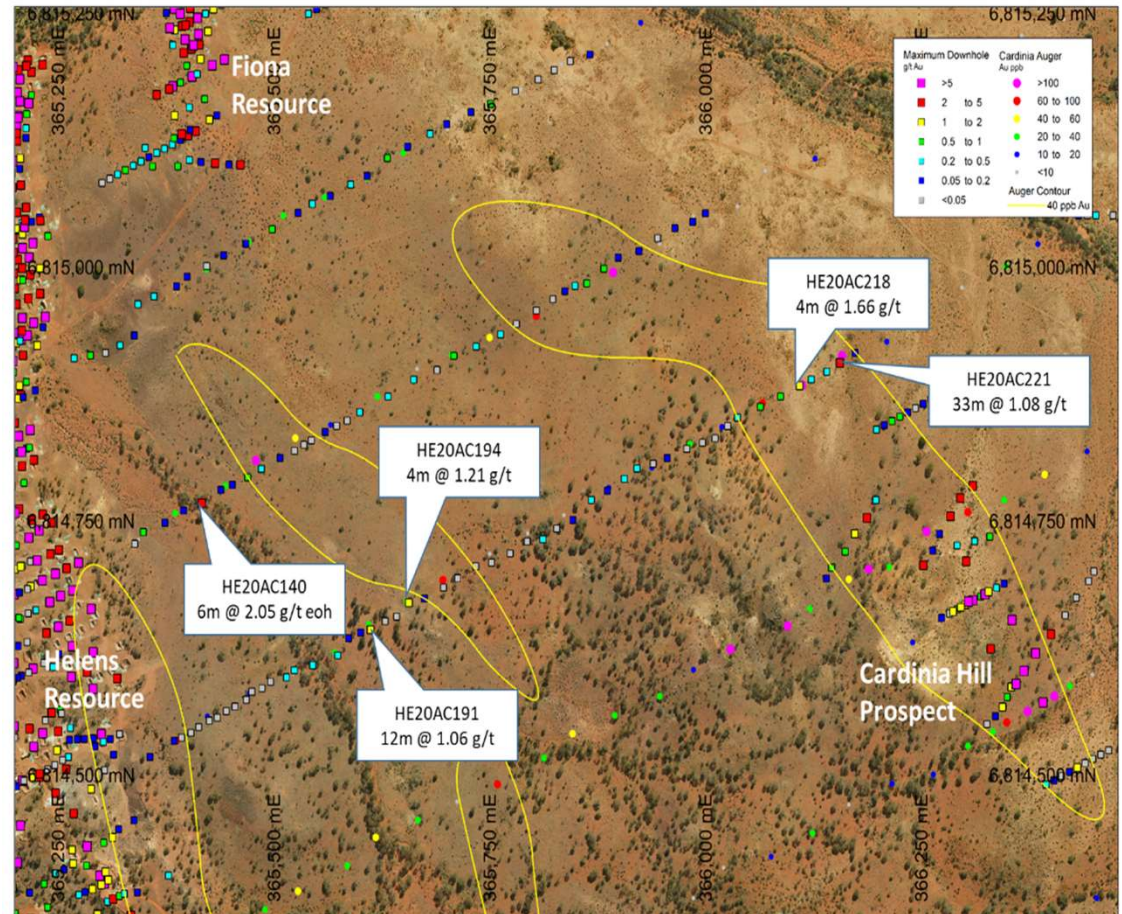
- Target area located just 2.5km east of proposed processing plant site
  - Previous exploration a single line of AC - 7m at 6.0g/t in 2015
- Consistent high-grade, near-surface gold mineralisation intersected in RC drilling in Feb 2020
- 34 RC holes and 3 diamond holes May to August produced:
  - **5m at 3.06g/t Au** from 53m and **7m at 1.83g/t Au** from 94m (CH20RC027)
  - **17m at 3.29g/t Au** from 10m (CH20RC028)
  - **15m at 4.42g/t Au** from 34m (CH20RC030)
  - **8m at 3.81g/t Au** from 4m (CH20RC035)
  - **4m at 5.15g/t Au** from 32m and **6m at 1.92 g/t Au** from 66m (CH20RC037)
  - **8m at 2.38g/t Au** from 18m and **9m at 2.31g/t Au** from 56m (CH20RC038)
- Mineralisation defined over 500m of strike, open in all directions.
- 29 RC and 8 DD holes completed in Resource Definition drilling. All holes intersected mineralisation - Assays pending





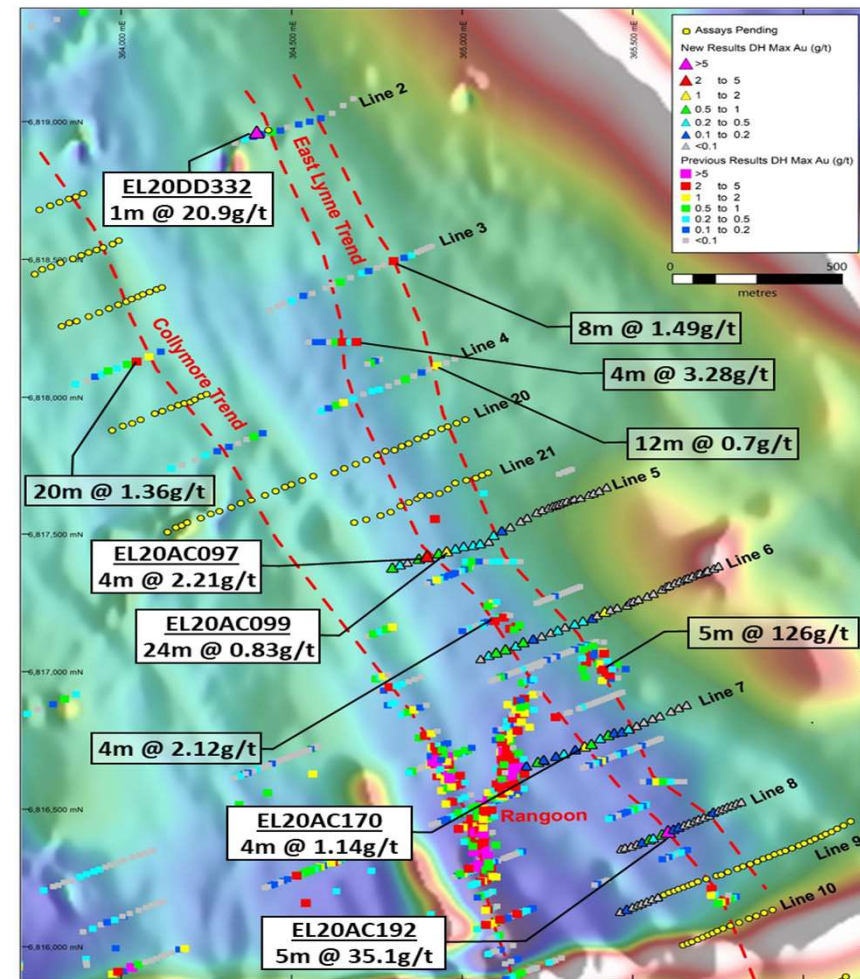
# Helens East – Significant Air-core and RC Results

- Target area located immediately adjacent to Cardinia Hill – no previous exploration
- Strong soil Geochem...then...Significant zones of shallow gold mineralisation intersected in broad spaced air-core holes
- Intersections from 4m composite sampling from the first three lines include:
  - **6m at 2.05g/t Au** from 28m (HE20AC140)
  - **12m at 1.06g/t Au** from 0m (HE20AC191)
  - **4m at 1.21g/t Au** from 4m (HE20AC194)
- Follow up RC drilling intersected significant sulphide mineralisation:
  - **21m at 3.58g/t Au** from 45m (HE20RC358)
  - **2m at 2.65g/t Au** from 49m (HE20RC352)



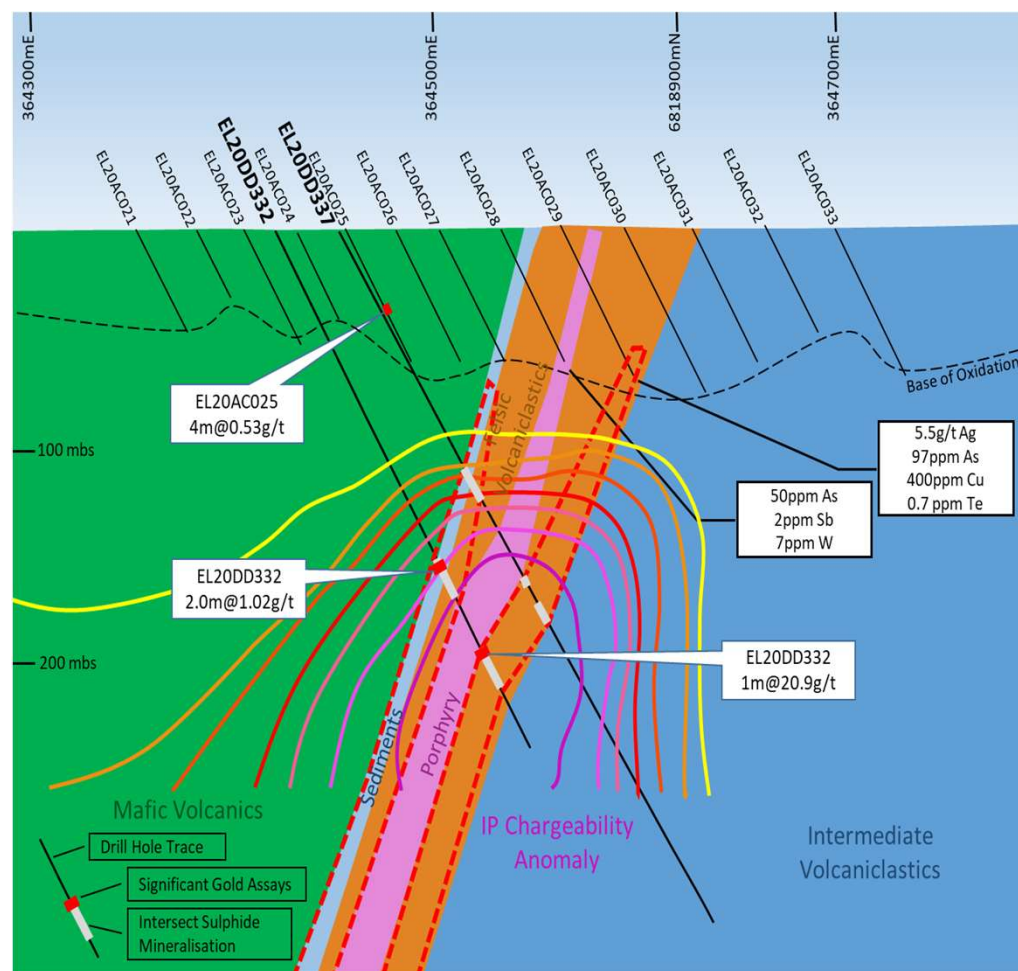
# East Lynne – Large gold Target –Aircore

- Target area NE of Cardinia containing several sets of historical workings. Limited shallow drilling focussed at the historical workings
- Large multielement soil geochemical anomaly
  - 6.0km by 0.6km in multi-elements, **gold rich for 3.2km**
  - Major geological contact intersected by regional scale faults
- Initial AC drilling at 400m line spacings
  - **5m at 35.1g/t Au** from 40m to EOH (EL20AC192)
  - **20m at 1.36g/t Au** from 20m (EL20AC041)
  - **8m at 1.49g/t Au** from 49m (EL20AC058)
  - **12m at 0.7g/t Au** from 20m (EL20AC093)
  - **24m at 0.83g/t Au** from 12m (EL20AC099)
- Discovers **Collymore** and defines **East Lynne** over 3.2km
- Infill AC drilling at 200m line between Line 2 and Line 10.



# East Lynne – Large gold Target – Geophysics and Diamond drilling

- East Lynne underlain by major geological contact
- Strong, consistent IP anomaly surveyed in 2013. Limited shallow testing. No deep drilling.
- Line 2 Aircore
  - Nil Significant Au assay in 13 holes to 70m.
  - But...geology is interesting and....
  - Bottom of hole assay strongly anomalous in pathfinders
- 2 DD holes test IP anomaly. Part funded by EIS.
  - Strong sulphide mineralisation in Felsic Volcaniclastic
  - Zones of sulphide rich in Ag-As-Cu-Mo-Sb-Te-W
- Initial assay results
  - **1.0m at 20.9g/t Au** from 230m (EL20DD332) and **2.0m at 1.02g/t Au** from 184m
  - Second diamond hole 40m up-dip intersects zone



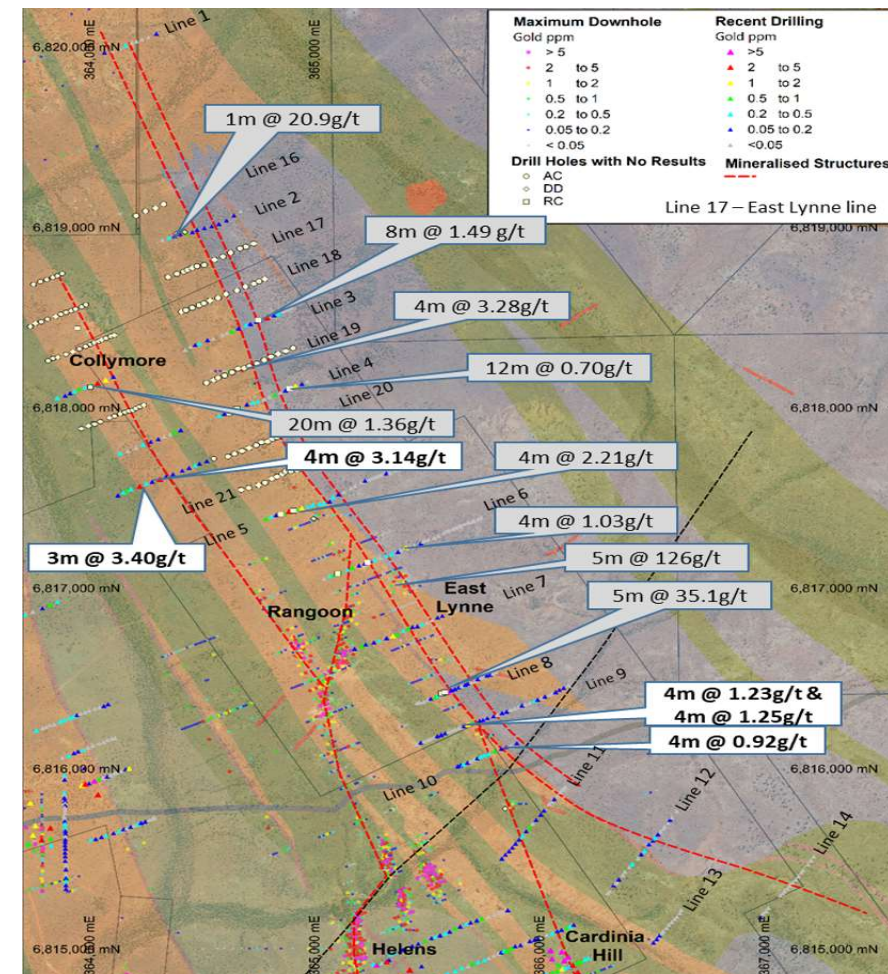
# East Lynne – Large gold Target – Geophysics and Diamond drilling

- East Lynne – Major contact hosted by Volcaniclastic rocks
- The IP anomaly is extensive. 3+km long extending south from Line 2
  - 8 Diamond holes (2 per line) at 800m spacing in progress
  - 12 RC holes completed below ore grade AC results. Assays pending
- Strong sulphide mineralisation in the first Diamond holes
  - Banded Pyrite in layered Felsic volcanics and sediments
  - Disseminated pyrite and large sulphide blebs in intermediate volcanic breccia
  - Porphyry intrusions and quartz carbonate veins
  - Two zones each 25-30m true thickness separated by porphyry on Line 2
  - Similar geology and sulphide mineralisation on Line 4



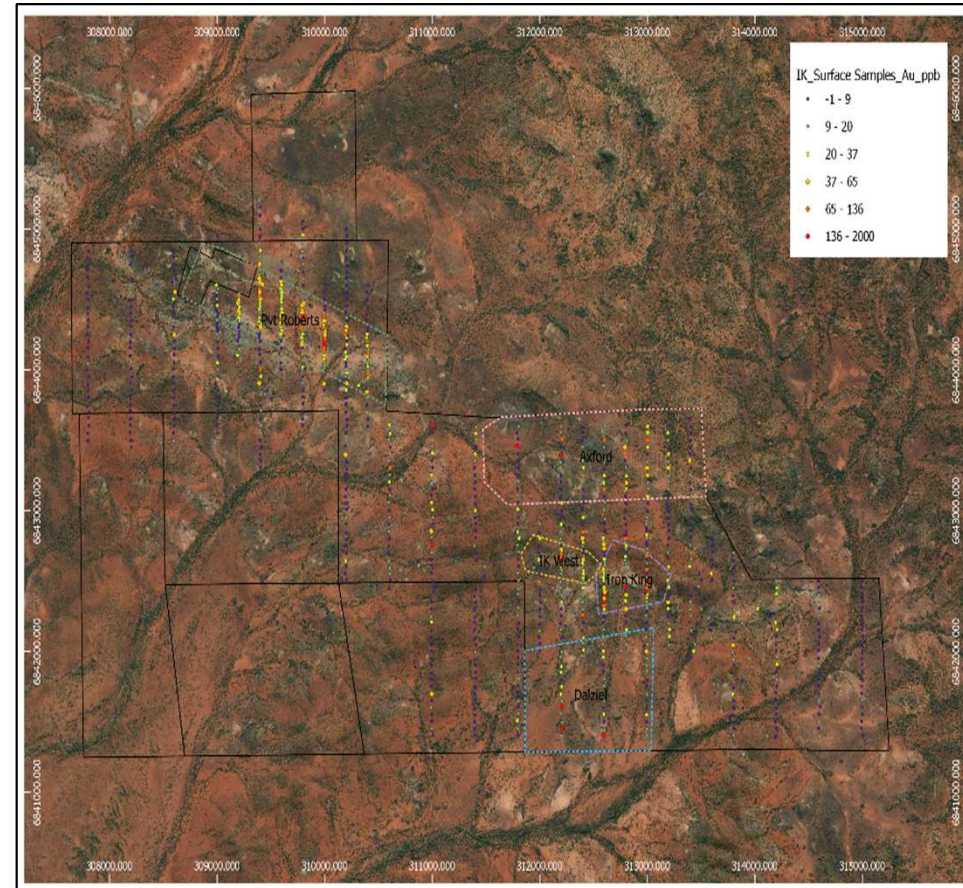
# East Lynne and Cardinia – Large gold Mineralised System

- Target area NE of Cardinia containing several sets of historical workings. Not seen previously as a Mineralised System
- Infill AC drilling to 200m spacings complete. Assays do date.
  - **4m at 3.14g/t Au** from 16m (CM20AC008)
  - **4m at 1.23g/t Au and 4m at 1.25g/t Au** from 20m (EL20AC223)
- Initial Broad spaced RC and DD testing **East Lynne at depth**
- East Lynne and other deposits in the area are part of a **Large Mineralised System**
  - **East Lynne is the base deposit** and sits on a **major geological contact**
  - **Rangoon, Helens and Cardinia Hill** all sit on **N trending Faults** that pass through East Lynne from deeper (NE).
  - **Collymore is parallel to East Lynne** but sits higher in the stratigraphy.
  - **The rest of Cardinia (?).....** part of this system too



# Iron King – second large gold Target –Aircore

- Target area 45km north of Leonora, 13km NW of King of the Hills. Contains several sets of historical workings. Limited shallow drilling and surface mining. Held by Kin since IPO in 2013.
- Historical production
  - Victory. (pre 1954) 11,638 oz at 95.6g/t
  - Iron King. (1981-85) 253 oz at 6.8g/t
  - Blue Spec. (pre 1954) 322 oz at 56.6g/t
- Large multi-element soil geochemical anomaly in four zones
  - Gold rich zones up to 2.0km by 1.0km
  - Soil anomaly along strike from historical production
  - High grade, vein style mineralisation – WNW trending
- Initial 10,000m AC drilling program at 400m and 200m line spacings
- Follow up AC at 200m line spacings and RC drilling - if warranted.





## Summary and Key Takeaways



Advanced 945Koz gold project in an attractive gold mining region with considerable untested exploration potential. Resources to be updated in Dec Q 2020.



The first drilling of new target areas at Cardinia in a decade has immediately yielded a number of new gold discoveries within 5km of the process plant site



New Targets (under cover) have been generated from extensive multi-element soil geochemistry and new geophysics. Substantial program of first-pass AC drilling led to East Lynne discovery



Extensional and in-fill RC and Diamond drilling of new projects rapidly delivering maiden Mineral Resource estimates to grow the Mineral Resource base



East Lynne discovery is unlocking the potential for a belt-scale exploration opportunity  
Iron King program commenced to provide high grade vein style opportunity separate to Cardinia

Kin Mining has repositioned from near-term developer to explorer focused on the most value-accretive phase of the mining cycle..... exploration and discovery.



**Kin Mining NL**

Level 1, 342 Scarborough Beach Rd  
Osborne Park WA 6017

T: 61 8 9242 2227

E: [info@kinmining.com.au](mailto:info@kinmining.com.au)

ASX: KIN



**Thank you.**



# APPENDIX A: Kin Mining NL Mineral Resources

## Cardinia Gold Project: Mineral Resources: January 2020

Project Area	Resource Gold Price (AUD)	Lower Cut off (g/t Au)	Measured Resources			Indicated Resources			Inferred Resources			Total Resources		
			Tonnes (Mt)	Au (g/t Au)	Au (k Oz)	Tonnes (Mt)	Au (g/t Au)	Au (k Oz)	Tonnes (Mt)	Au (g/t Au)	Au (k Oz)	Tonnes (Mt)	Au (g/t Au)	Au (k Oz)
<b>Mertondale</b>														
Mertons Reward	\$2,000	0.5				0.8	2.30	60	0.4	1.01	15	1.2	1.86	74
Mertondale 3-4	\$2,000	0.5				1.2	1.99	75	0.4	1.36	20	1.6	1.82	95
Tonto	\$2,000	0.5				1.6	1.19	63	0.8	1.30	32	2.4	1.23	95
Mertondale 5	\$2,000	0.5				0.4	1.84	24	0.4	1.36	18	0.8	1.60	42
Eclipse	\$2,000	0.5							0.7	1.00	22	0.7	1.00	22
Quicksilver	\$2,000	0.5							1.1	1.11	39	1.1	1.11	39
Subtotal Mertondale						4.0	1.72	222	3.8	1.17	145	7.9	1.45	367
<b>Cardinia</b>														
Bruno	\$2,000	0.5				0.9	1.02	28	1.9	1.28	78	2.8	1.20	106
Lewis	\$2,000	0.5	0.4	1.04	12	3.6	0.93	108	1.0	1.06	33	4.9	0.97	153
Kyte	\$2,000	0.5				0.3	1.57	16	0.0	1.30	2	0.4	1.54	18
Helens	\$2,000	0.5				0.7	2.18	47	0.2	1.83	14	0.9	2.09	61
Fiona	\$2,000	0.5				0.5	1.41	24	0.2	1.29	7	0.7	1.38	31
Rangoon	\$2,000	0.5				0.5	1.26	20	0.3	1.07	11	0.8	1.19	31
Hobby	\$2,000	0.5							0.1	2.10	8	0.1	2.10	8
Subtotal Cardinia			0.4	1.04	12	6.5	1.17	244	3.8	1.27	153	10.6	1.20	409
<b>Raeside</b>														
Michaelangelo	\$2,000	0.5				1.1	2.03	72	0.4	2.15	26	1.5	2.06	98
Leonardo	\$2,000	0.5				0.4	2.38	30	0.1	1.92	9	0.5	2.26	39
Forgotten Four	\$2,000	0.5				0.1	2.11	7	0.1	1.97	6	0.2	2.04	14
Krang	\$2,000	0.5				0.3	1.85	16	0.0	1.71	2	0.3	1.84	17
Subtotal Raeside						1.9	2.08	125	0.7	2.05	43	2.5	2.07	168
<b>TOTAL</b>			<b>0.4</b>	<b>1.04</b>	<b>12</b>	<b>12.4</b>	<b>1.49</b>	<b>591</b>	<b>8.3</b>	<b>1.28</b>	<b>341</b>	<b>21.0</b>	<b>1.40</b>	<b>945</b>

### Notes

- See ASX Announcement 17 February 2020 "Cardinia Gold Project Mineral Resource Update"
- The Company confirms that all material assumptions and technical parameters underpinning the estimates continue to apply and have not materially changed at the time of publication
- Totals may not tally due to rounding of values
- Mineral Resources estimated by Jamie Logan of Kin Mining NL and reported in accordance with JORC 2012 using a 0.5g/t Au cut-off within AUD\$2,000 optimisation shells



# Cardinia Geological Model

## Evolution of the bi-modal Minerie Sequence

Evolution of the Minerie sequence occurred during the subduction of oceanic plate below the Yilgarn continental plate creating the Kalgoorlie – Kurnalpi Rift. Cardinia sits near the western margin of the Kurnalpi Terrane adjacent to the crustal depth Keith Kilkenny Fault.

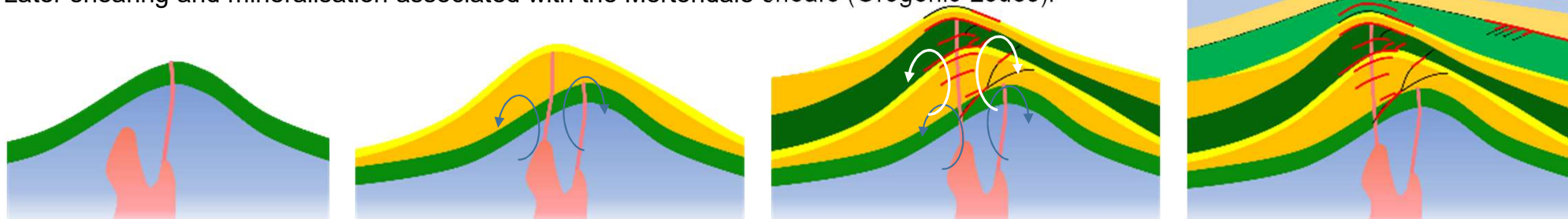
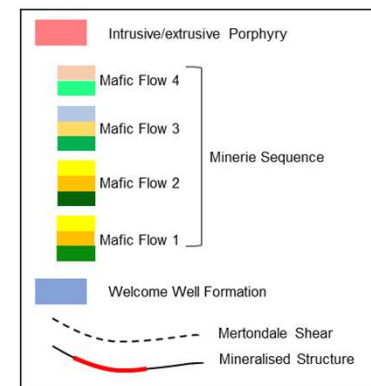
Initial uplift and mafic volcanism during rifting of the Welcome Well Formation – extrusion of the Mafic Flow unit 1

Acid volcanic activity followed, depositing felsic volcanics and subsequent volcanoclastic sediments.

High energy environment with uplift and further mafic volcanism. This episode produced the Au-Ag-As-Sb-Bi-Te-W-Zn mineralisation into the lower mafic sequence 1. Hydrothermal fluids circulate within the sequence, altering the basalts (picture right of the dolomite altered basalt and pyrite mineralisation), with higher grade sulphide deposition adjacent to the volcanic vent.

Subsequent bi-modal volcanism in a lower energy environment over a broader area. This episode continued the sulphide mineralisation in stratigraphic-structural traps.

Later shearing and mineralisation associated with the Mertondale shears (Orogenic Lodes).



# Early Exploration Breakthroughs

**Three significant new shallow discoveries** made in December 2019 air-core drilling program have been followed up with recent RC drilling. Further RC and Diamond drilling is planned

• **Comedy King:**

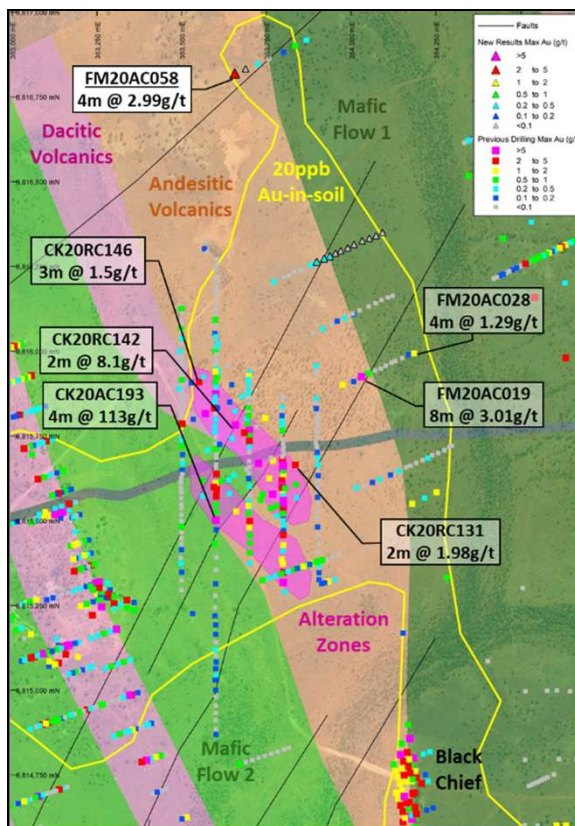
- 4m @ 113 g/t Au from surface (CK20AC193)
- 2m at 8.1 g/t Au from 37m (CK20RC142)
- 3m at 1.5 g/t Au from 70m (CK20RC146)

• **Faye Marie to Black Chief:**

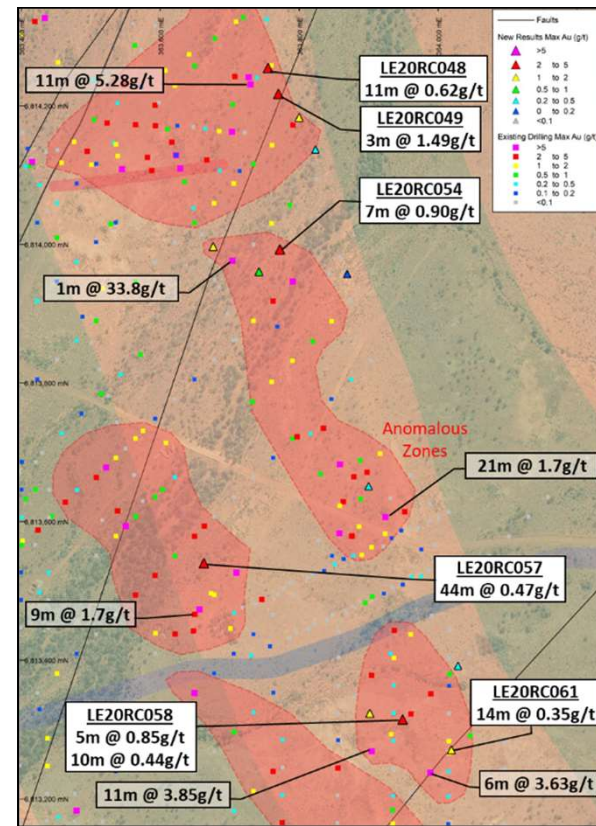
- 8m at 3.01g/t Au from 36m to EOH (FM20AC019)
- 4m at 2.99g/t Au from 48m (FM20AC058)

• **Lewis East:**

- 44m at 0.47 g/t Au from 51m (LE20RC057)
- 11m at 5.28 g/t Au from 53m (LE20RC048)
- 21m at 1.70 g/t Au from 20m (LE20RC049)



Completed drilling at the Comedy King and Faye Marie over historical drilling and recent rock chip results

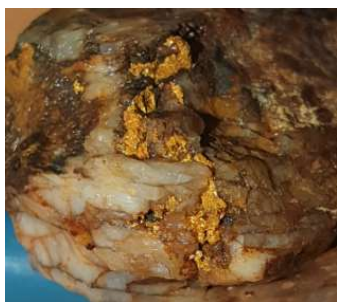


Completed drilling at Lewis East over historical drilling results



# Cardinia – Cracking the Geological Code

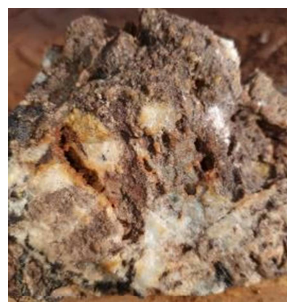
- Mineralisation occurs as sulphidic fine grained sediments (shales and cherts) and as sulphide replacement mineralisation in structurally controlled positions
- Mineralisation occurred close to the earth's surface (<3km depth)
- Quartz veins with boiling fluid textures (high temperature, low pressure) are present at Cardinia as well as an epidote-albite-dolomite alteration assemblage indicating a shallow depth of genesis
- Systematic surface sampling has been undertaken across Cardinia – multi-element analysis of soils has delineated extensive anomalous areas and identified the lower stratigraphy of the Minerie sequence as the highest-priority target



Gold in quartz vein –  
Comedy King



Bladed calcite  
pseudomorphs –  
Nevertire/Comedy King



Mineralised vuggy silica  
– Helens South



Epidote alteration of felsic  
volcanics – Cardinia Hill

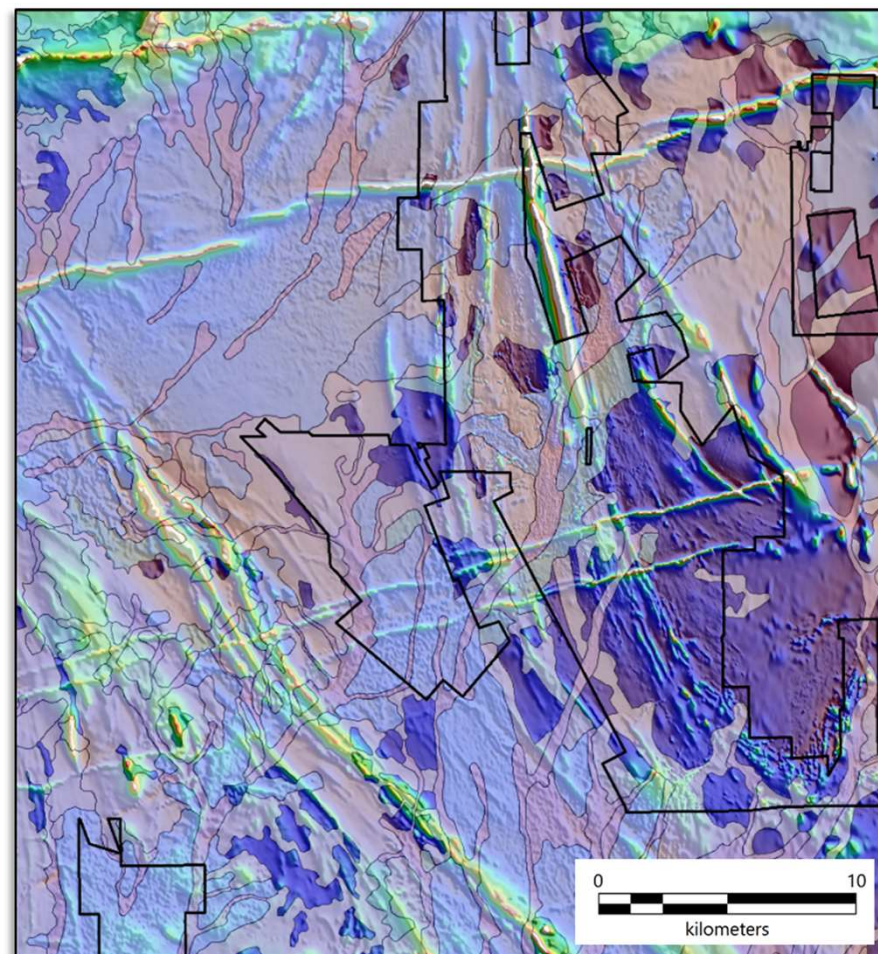
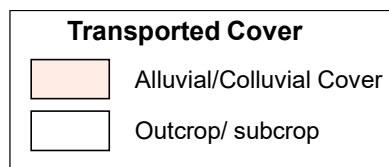


Sulphidic shale – Lewis South



# Cardinia – Cracking the Geological Code

- Over 60% of Kin’s tenure is under recent transported cover and has seen little previous modern exploration – shallow alluvial and sheet-wash cover conceals potential deposits
- Using extensive high-quality assaying, Kin has undertaken 4,200 auger samples across Cardinia and a further 1,448 auger samples at Iron King – analysis was for gold and 33 “pathfinder” elements
- New, aerial magnetic survey completed over the eastern portion of Cardinia, covering the Minerie sequence at Cardinia with high-resolution magnetics and 1:10,000 scale mapping
- Integration of new data with new thinking of how the whole Kurnalpi – Kalgoorlie Terrane develops and the influence of the Keith Kilkenny Shear zone





# Cardinia – Metallurgical testwork - IMO

- Strong association between sulphides and gold mineralisation at Cardinia – two styles of gold mineralisation
- Recovery is a function of oxidation, grade and style
- Fresh material is partially Refractory
  - Rougher Flotation recovers 96% S and ~84% Au in 5-8% of mass.
  - Ultrafine grinding (<10 um) increases leach gold recovery by between 4% and 12% (average 8%) (5 Composite samples from Lewis and Helens) to 92% on average.
  - The non-Flotation gold is recoverable in gravity and standard leach at around 90%
  - Cyanide consumption increases significantly in Ultrafine concentrate gold leaching due to copper leaching (chalcopyrite, bornite)

