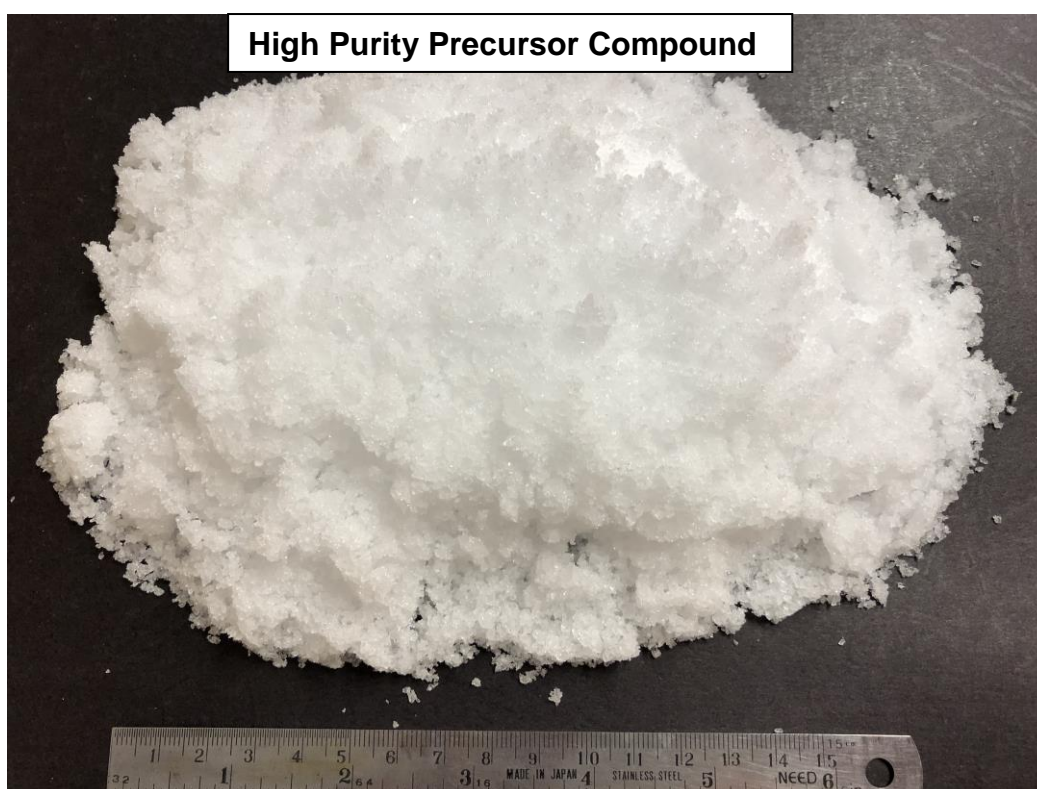

Australian Securities Exchange Announcement**13 October 2020**

King River Resources Limited (ASX: KRR) is progressing the Speewah Prefeasibility Study (“PFS”) on the company’s 100% owned Speewah Specialty Metals (“SSM”) Project in the East Kimberley of Western Australia. The KRR PFS has retained a Kimberley focus that would produce High Purity Alumina (HPA), with any future potential co-products Vanadium (V_2O_5), Titanium (TiO_2) and Iron (Fe oxide) not included in this initial study.

Following the KRR ASX release 7 September 2020, further significant PFS developments have been the focus of testwork and studies:

- KRRs metallurgical testwork using its simplified purification process has produced a high purity precursor compound with the main contaminant metals (Na, K, Si, Fe, Ca, Mg and Ga) each at very low levels (about 1ppm or less than 1ppm). This precursor (see photograph below) may be suitable for the production of 4N (99.99% Al_2O_3) HPA after calcination (heating to $1200^\circ C$) and washing. These very low ($\pm 1ppm$) contaminant levels are required because on calcination the mass (and volume) of the precursor is significantly reduced due to off-gassing of volatile elements, which causes the levels of contaminants to increase in the final HPA calcined product.



- Calcination of the HPA precursor (at $1200^\circ C$) is the current focus of testwork to ensure no contamination is introduced during the heating process and 4N (99.99% Al_2O_3) HPA is produced.
- The first batch of HPA samples of different alumina grades produced in previous test runs has been submitted to an independent umpire laboratory to provide greater confidence in testwork assays and help identify sources of contamination in the testwork.
- CSA Global has updated the Mining Study based on the simplified flowsheet with improved overall recovery and lower throughput.

- CRU International is finalising the HPA market study to a 2028 dateline.
- Como Engineers is working on completing the process plant and infrastructure design and costings based on the updated flowsheet and the final production of 4N HPA.

The Company aims to release the PFS as soon as practicable on completion of these remaining outcomes. In parallel with completing the PFS outlined above, the Company is continuing to progress metallurgical testwork and engineering studies using our HPA process route on alternative aluminium feedstocks. Testwork has demonstrated that a high purity HPA precursor can readily be made with fewer process steps. The implication is that start up HPA development may be initially focused around a Perth industrial estate, without the immediate capital and permitting needs of building a Kimberley based acid plant adjacent to a mining and processing operation.

This announcement was authorised by the Chairman of the Company.

Anthony Barton

Chairman

King River Resources Limited

Email: info@kingriverresources.com.au

Phone: +61 8 92218055

Statement by Competent Person

The information in this report that relates to Exploration Results, Mineral Resources, Metallurgy and Previous Studies is based on information compiled by Ken Rogers (BSc Hons) and fairly represents this information. Mr. Rogers is the Chief Geologist and an employee of King River Resources Ltd, and a Member of both the Australian Institute of Geoscientists (AIG) and The Institute of Materials Minerals and Mining (IMMM), and a Chartered Engineer of the IMMM. Mr. Rogers has sufficient experience of relevance to the styles of mineralisation and the types of deposits under consideration, and to the activities undertaken, to qualify as a Competent Person as defined in the 2012 Edition of the Joint Ore Reserves Committee (JORC) Australasian Code for Reporting of Exploration Results, Mineral Resources and Ore Reserves. Mr. Rogers consents to the inclusion in this report of the matters based on information in the form and context in which it appears.

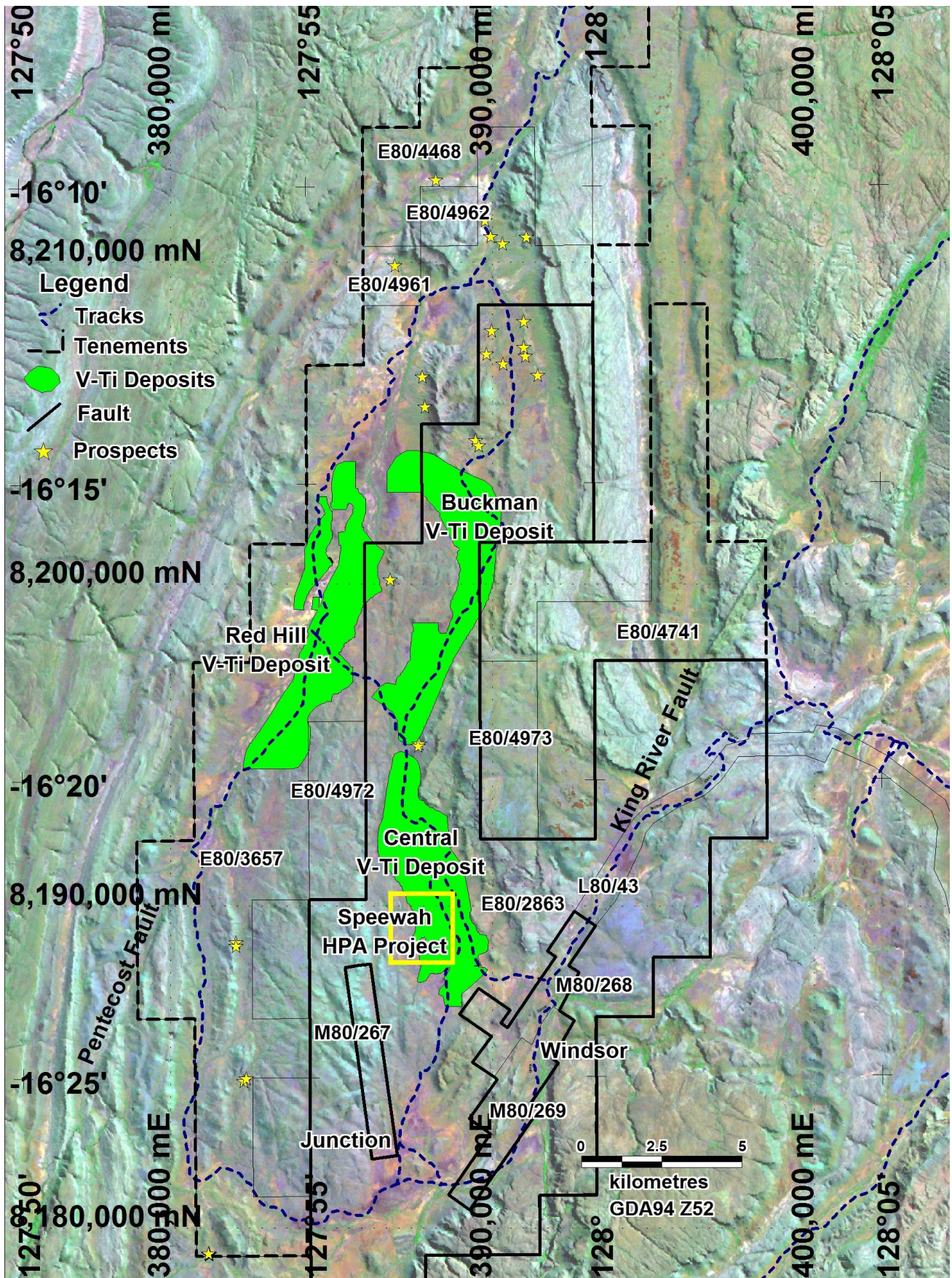


Figure 1: Location of the vanadium resources (green) and HPA area at Speewah.

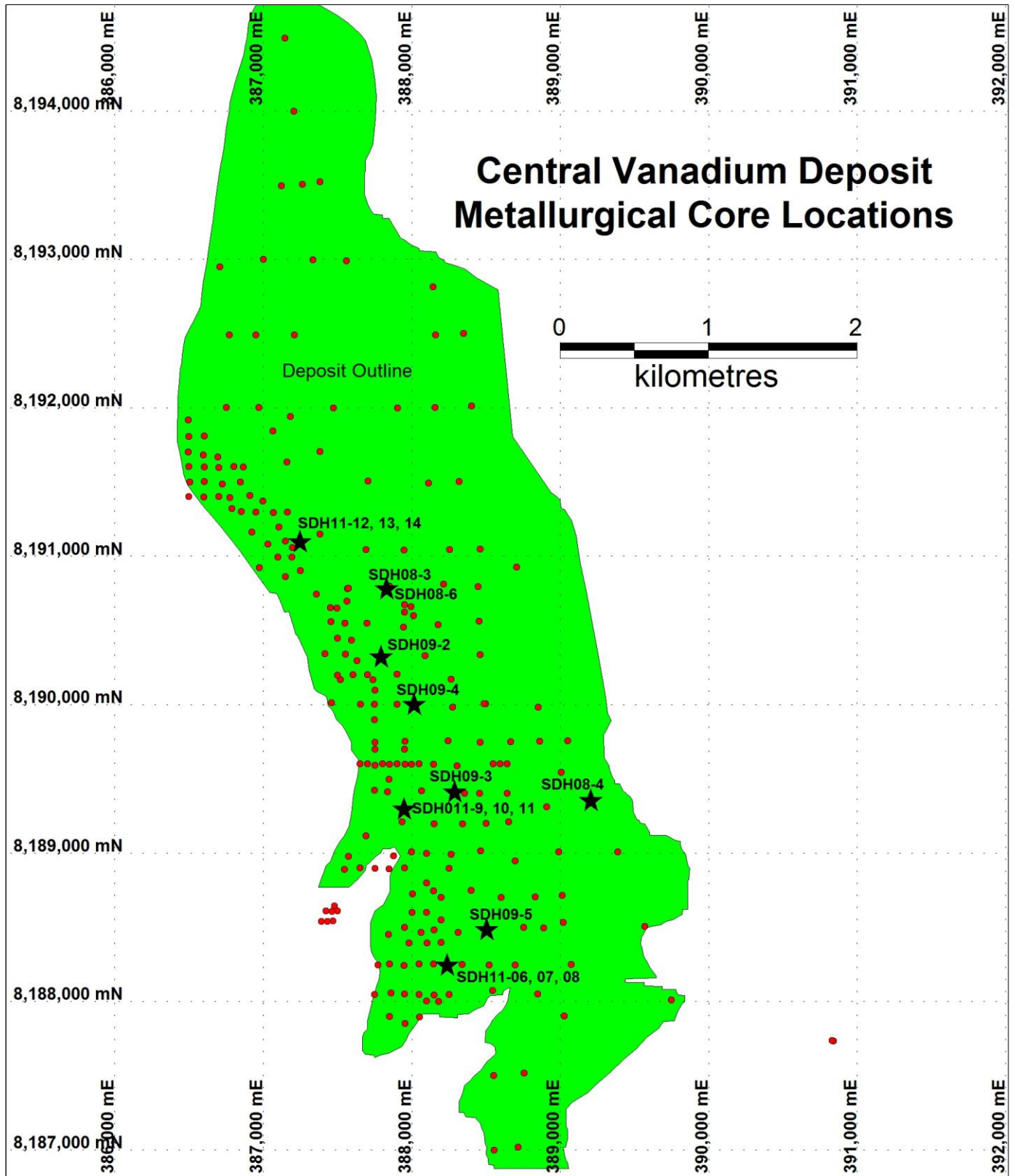


Figure 2: Diamond core hole locations (black stars) and Reverse Circulation drill holes (red dots) within the Central Vanadium Deposit, including metallurgical core hole SDH11-12 referred to in this announcement. Diamond core hole collar data is given in Table 1.

Table 1: Diamond core holes drilled in the Central deposit

Hole_id	Deposit	East_GDA	North_GDA	RL	Depth	Dip	Azimuth	Tenement
		m	m	m	m	degrees	degrees	
SDH08-3	Central	387830.42	8190778.6	197.037	80	-90	0	E80/2863
SDH08-4	Central	389203.71	8189358.8	190.014	75	-90	0	E80/2863
SDH08-6	Central	387831.84	8190783.9	197.187	450.5	-90	0	E80/2863
SDH09-2	Central	387793.53	8190327.7	196.267	50	-90	0	E80/2863
SDH09-3	Central	388287.08	8189417.5	189.987	70.5	-90	0	E80/2863
SDH09-4	Central	388016.74	8190007.5	194.698	42.1	-90	0	E80/2863
SDH09-5	Central	388502.3	8188487.8	186.4	57.1	-90	0	E80/2863
SDH11-06	Central	388234.08	8188240.6	188.018	39.4	-90	0	E80/2863
SDH11-07	Central	388234.04	8188243.7	187.999	41.6	-90	0	E80/2863
SDH11-08	Central	388234.08	8188246.9	187.941	40.9	-90	0	E80/2863
SDH11-09	Central	387946.28	8189294	191.676	40.9	-90	0	E80/2863
SDH11-10	Central	387945.75	8189295.9	191.643	39.4	-90	0	E80/2863
SDH11-11	Central	387945.33	8189297.8	191.706	40.9	-90	0	E80/2863
SDH11-12	Central	387243.47	8191101.7	212.529	41	-90	0	E80/2863
SDH11-13	Central	387242.63	8191101.2	212.467	41	-90	0	E80/2863
SDH11-14	Central	387241.65	8191100.6	212.457	40.1	-90	0	E80/2863

Appendix 1: King River Resources Limited Speewah Project JORC 2012 Table 1

SECTION 1 : SAMPLING TECHNIQUES AND DATA

Criteria	JORC Code explanation	Commentary
Sampling Techniques	<p><i>Nature and quality of sampling (e.g. cut channels, random chips, or specific specialised industry standard measurement tools appropriate to the minerals under investigation, such as down hole gamma sondes, or handheld XRF instruments, etc.). These examples should not be taken as limiting the broad meaning of sampling.</i></p> <p><i>Include reference to measures taken to ensure sample representivity and the appropriate calibration of any measurement tools or systems used.</i></p> <p><i>Aspects of the determination of mineralisation that are Material to the Public Report.</i></p> <p><i>In cases where 'industry standard' work has been done this would be relatively simple (e.g. 'reverse circulation drilling was used to obtain 1 m samples from which 3 kg was pulverised to produce a 30 g charge for fire assay'). In other cases more explanation may be required, such as where there is coarse gold that has inherent sampling problems.</i></p> <p><i>Unusual commodities or mineralisation types (e.g. submarine nodules) may warrant disclosure of detailed information.</i></p>	<p>This ASX Release dated 13 October 2020 provides an update on the Speewah HPA Prefeasibility Study including some hydrometallurgical processes involved in the production of high purity alumina (HPA) from the high grade zone of the Central Vanadium deposit at KRR's Speewah Project (Figure 1).</p> <p><i>Diamond Core Sample</i> 16 HQ and PQ diamond drill (DD) core holes were drilled in the Central Vanadium deposit (see Figure 2 and Table 1 for locations). Three PQ holes have been used in beneficiation and leaching metallurgical testwork by Nagrom (SDH11-09, SDH11-06 and SDH11-12, Figure 2). Three of the PQ core holes from the high grade zone (SDH11-09, SDH11-12 and SDH11-12) have been used in the hydrometallurgical metallurgical testwork. For example, Nagrom received a 168kg composite magnetite gabbro sample of PQ ½ core from the high grade zone of drillhole SDH11-12 – 18.2m-38.6m downhole. The head grade of this sample is 0.351% V₂O₅, 3.45% TiO₂, 20.665% Fe₂O₃, 13.243% Al₂O₃, 9.10% CaO, 4.469% MgO and 44.591% SiO₂.</p> <p><i>Leachate Sample</i> TSW Analytical Pty Ltd has used a 3L composite of leachate solutions (designated AVL69, AVL71 and AVL73) produced by Nagrom by leaching a 0.15mm non-magnetic concentrate sample from the high grade zone of SDH11-06, SDH11-09 and SDH11-12. The leach liquor typically assays 16110mg/L Fe, 11455mg/L Al, 4123mg/L Mg, 941mg/L Ti, 91mg/L V, 2248mg/L Na, 576mg/L K, 270mg/L Ca, 156mg/L Mn, 141mg/L P and 48mg/L Si. Chemical precipitation and recrystallisation purification methods have been used in the separation and precipitation of the high purity Aluminium precursor compound reported in this announcement. The Precursor compound is then calcined to high purity alumina product. The process and reagents used are commercial-in-confidence.</p>
Drilling techniques	<p><i>Drill type (e.g. core, reverse circulation, open-hole hammer, rotary air blast, auger, Bangka, sonic, etc.) and details (e.g. core diameter, triple or standard tube, depth of diamond tails, face-sampling bit or other type, whether core is oriented and if so, by what method, etc.).</i></p>	<p>Diamond (NQ and HQ3 size) drilling were completed to support the preparation of the Mineral Resource estimate. Holes drilled vertical. Metallurgical testwork has been completed on ½ PQ core composite sample from metallurgical diamond drill core holes SDH11-09, SDH11-12 and SDH11-12 (Figure 2 and Table 1):</p>
Drill sample recovery	<p><i>Method of recording and assessing core and chip sample recoveries and results assessed.</i></p> <p><i>Measures taken to maximise sample recovery and ensure representative nature of the samples.</i></p>	<p>No qualitative recovery data was recorded. Qualitative examination and photography suggested RC and diamond recoveries are very high. Good ground conditions exist which suggests recovery is likely to be very high.</p> <p>PQ drilling was used to maximise diamond sample recovery.</p>

	<i>Whether a relationship exists between sample recovery and grade and whether sample bias may have occurred due to preferential loss/gain of fine/coarse material.</i>	No relationship between grade and recovery has been identified.
Logging	<i>Whether core and chip samples have been geologically and geotechnically logged to a level of detail to support appropriate Mineral Resource estimation, mining studies and metallurgical studies.</i>	DD core and RC chips were geologically logged, with descriptions of mineralogy and lithology noted.
	<i>Whether logging is qualitative or quantitative in nature. Core (or costean, channel, etc.) photography.</i>	Logging was generally qualitative in nature. DD core photographed wet.
	<i>The total length and percentage of the relevant intersections logged.</i>	SDH11-09, SDH11-12 and SDH11-12, all 100% logged.
Sub-sampling techniques and sample preparation	<i>If core, whether cut or sawn and whether quarter, half or all core taken.</i>	DD core was cut in half with a core saw. Some half sections sawn in quarters. ½ core used in testwork.
	<i>If non-core, whether riffled, tube sampled, rotary split, etc. and whether sampled wet or dry.</i>	Not applicable as samples used in the reported testwork were DD core.
	<i>For all sample types, the nature, quality and appropriateness of the sample preparation technique.</i>	Whole continuous lengths of DD ½ core samples collected, composited and used in testwork. These were collected to represent the composite intervals of both the High Grade and Low Grade Zones.
	<i>Quality control procedures adopted for all sub-sampling stages to maximise representivity of samples.</i>	Subsampling is performed during the preparation stage according to the metallurgical laboratories' internal protocol.
	<i>Measures taken to ensure that the sampling is representative of the in situ material collected, including for instance results for field duplicate/second-half sampling.</i>	Use of DD core in metallurgical testwork gives a continuous insitu sample. PQ ensures high recovery rates. DD core twinned previous RC drill holes. Whole sample interval used in testwork.
	<i>Whether sample sizes are appropriate to the grain size of the material being sampled.</i>	Sample sizes are considered appropriate to the grain size of the material being sampled.
Quality of assay data and laboratory tests	<i>The nature, quality and appropriateness of the assaying and laboratory procedures used and whether the technique is considered partial or total.</i>	<p>TSW Analytical Testwork</p> <p>Testwork includes chemical precipitation of intermediate aluminium compounds from sulphuric acid leachate solutions, solid liquid separations, purification steps involving recrystallisation and ion exchange methods, and calcination. Assays are conducted on leach solutions and solid residues, mother liquors and precipitates, eluates, precipitates and residue liquors.</p> <p>TSW Analytical is a well-established analytical service provider that has developed a reputation for producing accurate analyses for complex samples. The company's expertise has assisted with the development of hydrometallurgical flow-sheets for multi-element ore concentrates.</p> <p>The titaniferous vanadiferous magnetite concentrate and leach residues have been assayed using ICP-AES and ICP-MS. Solid samples were fused in a lithium borate flux, the resultant glass bead was dissolved in hydrochloric acid and suitably diluted for either ICP-MS or ICP-AES analysis. Loss on Ignition (LOI) at 1000 °C was performed for completeness of the analytical data and to give a better indication of the total analytical percentage approximation to 100%.</p> <p>Soluble solid samples (such as intermediate aluminium compounds and recrystallised solids) were digested in nitric acid and the digestate was suitably diluted for ICP-AES or ICP-MS analysis.</p> <p>The liquor samples (such as leach solutions, wash liquors, mother liquors, and eluates) have been analysed using ICP-AES and ICP-MS. The samples were diluted suitably for the appropriate ICP based analysis. Dilutions are used to bring the analyte concentration into the optimum analytical range of the ICP instrument used and to reduce matrix interference complications during quantification.</p>

		<p>Precipitation efficiency has been determined using the mass of the total analyte in the leach residue divided by the mass of the total analyte in the initial leach solution used. The resulting fraction is multiplied by 100 to give percent precipitation efficiency.</p> <p>Similarly the recovery of soluble solid precipitates has been determined using the mass of analyte in the precipitate divided by the mass of the total analyte in the pregnant liquor from which it was derived. The resultant fraction is multiplied by 100 to give the percent recovery.</p> <p>TSW Analytical uses in-house standards and Certified Reference Materials (CRMs) to ensure data are "Fit-For-Purpose".</p> <p>Nagrom Testwork</p> <p>All solid samples have been analysed via XRF. The prepared sample is fused in a lithium borate flux with a lithium nitrate additive. The resultant glass bead is analysed by XRF. Loss on Ignition (LOI) is also conducted to allow for the determination of oxide totals.</p> <p>MicroAnalysis Australia has analyses the 4N HPA by XRD methods to determine the alumina phase.</p>
	<p><i>For geophysical tools, spectrometers, handheld XRF instruments, etc., the parameters used in determining the analysis including instrument make and model, reading times, calibrations factors applied and their derivation, etc.</i></p>	<p>No geophysical data was collected.</p>
	<p><i>Nature of quality control procedures adopted (e.g. standards, blanks, duplicates, external laboratory checks) and whether acceptable levels of accuracy (i.e. lack of bias) and precision have been established.</i></p>	<p>TSW Analytical</p> <p>TSW reports concentrations as micrograms per gram ($\mu\text{g/g}$) in the solid (unless otherwise stated). Instrumental response is measured against AccuTrace High Purity multi-element standards (Choice Analytical) to achieve quantitation. Data are subjected to in-house QA and QC procedures where an independent analyst recalculates instrumental output and compares the newly generated data set with the original. Lack of equivalence between the two data sets triggers an internal review and if necessary re-analysis of the entire data set. Under these circumstances a third independent analyst will assess all generated data prior to sign off. Initial equivalence between the two data sets, generated by the analyst and reviewer, will clear data for remittance to the customer. All reports are reviewed by an independent analyst prior to submission to the customer and where necessary relevant changes, such as wording that may give rise to possible ambiguity of interpretation, will be modified prior to the final report being sent to the customer.</p> <p>Nagrom is certified to a minimum of ISO 9001:2008.</p> <p>MicroAnalysis Australia is a commercial materials characterisation consulting laboratory with comprehensive analytical and chemical science techniques</p>

Verification of sampling and assaying	<i>The verification of significant intersections by either independent or alternative company personnel.</i>	Significant intersections have been verified by alternative company personnel.
	<i>The use of twinned holes.</i>	All metallurgical DD core holes twinned previous RC holes. SDH11-12 has been twinned by SDH11-13 and SDH11-14, SDH11-09 has been twinned by SDH11-10 and SDH11-11, and SDH11-06 has been twinned by SDH11-07 and SDH11-08 (see Figure 2 and Table 1)
	<i>Documentation of primary data, data entry procedures, data verification, data storage (physical and electronic) protocols.</i>	Templates have been set up to facilitate geological logging. Prior to the import into the central database, logging data is validated for conformity and overall systematic compliance by the geologist. Assay results are received from the laboratory in digital format. Assays, survey data and geological logs incorporated into a database.
	<i>Discuss any adjustment to assay data.</i>	No adjustments or calibrations will be made to any primary assay data collected for the purpose of reporting assay grades and mineralised intervals.
Location of data points	<i>Accuracy and quality of surveys used to locate drill holes (collar and down-hole surveys), trenches, mine workings and other locations used in Mineral Resource estimation.</i>	Almost 90% of the collars used in the resource estimate have been surveyed using a differential global positioning system (DGPS) instrument, with the remaining surveyed using a hand-held GPS. Downhole deviations have been measured by downhole survey instruments on 3 holes only using a Globaltech Pathfinder digital downhole camera. All but four holes are vertical. All metallurgical holes are vertical. The vertical and shallow nature of the drilling means that the absence of downhole surveys is not considered a material risk.
	<i>Specification of the grid system used.</i>	The adopted grid system is GDA 94 Zone 52.
	<i>Quality and adequacy of topographic control.</i>	A topographic file provided by KRR was calibrated for use in the Mineral Resource estimate using DGPS and GPS collar data. The Competent Person considers that the topography file is accurate given the use of DGPS data in the Mineral Resource area.
Data spacing and distribution	<i>Data spacing for reporting of Exploration Results.</i>	RC drill spacing is mostly 250 m by 250 m at the Central deposit, closing down to 100 m by 100 m in the western area (see Figure 1). Metallurgical DD core holes are spaced about 500 m apart (see Figure 1).
	<i>Whether the data spacing and distribution is sufficient to establish the degree of geological and grade continuity appropriate for the Mineral Resource and Ore Reserve estimation procedure(s) and classifications applied.</i>	The Competent Person believes the mineralised domains have sufficient geological and grade continuity to support the classification applied to the Mineral Resources given the current drill pattern.
	<i>Whether sample compositing has been applied.</i>	Metallurgical samples were composited to represent the High Grade and Low Grade Zones within the magnetite gabbro and within the resource envelope. This was considered appropriate given the metallurgical testwork was designed to test the lower and high grade zones of the mineralisation and it provided for a bulk sample suitable for the testwork.
Orientation of data in relation to geological structure	<i>Whether the orientation of sampling achieves unbiased sampling of possible structures and the extent to which this is known, considering the deposit type.</i>	All metallurgical DD core holes are vertical. This allows the holes to intersect the mineralisation at a high-angle as the magnetite gabbro has a very shallow dip to the east.
	<i>If the relationship between the drilling orientation and the orientation of key mineralised structures is considered to have introduced a sampling bias, this should be assessed and reported if material.</i>	The relationship between the drilling orientation and the orientation of key mineralised structures is not considered to have introduced a sampling bias.

<i>Sample security</i>	<i>The measures taken to ensure sample security.</i>	Chain of Custody is managed by the Company until samples pass to a duly certified metallurgical laboratory for subsampling, assaying, beneficiation and hydrometallurgical test work. The DD core samples are stored on secure sites and delivered to the metallurgical laboratory by the Company or a competent agent. The chain of custody passes upon delivery of the samples to the metallurgical laboratory.
<i>Audits or Reviews</i>	<i>The results of any audits or reviews of sampling techniques and data.</i>	No external audits have been completed.

SECTION 2 : REPORTING OF EXPLORATION RESULTS

Criteria	JORC Code explanation	Commentary
<i>Mineral tenement and land tenure status</i>	<i>Type, reference name/number, location and ownership including agreements or material issues with third parties such as joint ventures, partnerships, overriding royalties, native title interests, historical sites, wilderness or national park and environmental settings.</i> <i>The security of the tenure held at the time of reporting along with any known impediments to obtaining a licence to operate in the area.</i>	The Speewah Project comprises 9 Exploration Licences, three Mining Leases and two Miscellaneous Licences. Details are listed in Table 1 Schedule of Tenements held at 31 March 2020 reported previously in the March 2020 Quarterly Report. The Speewah testwork reported in this announcement are from samples collected entirely within E80/2863. The tenements are 100% owned by Speewah Mining Pty Ltd (a wholly owned subsidiary of King River Resources Limited), located over the Speewah Dome, 100km SW of Kununurra in the East Kimberley. The tenements are in good standing and no known impediments exist. No Native Title Claim covers the areas sampled and drilled. The northern part of the tenements (but not E80/2863) is in the Kimberley Heritage Area.
<i>Exploration done by other parties</i>	<i>Acknowledgment and appraisal of exploration by other parties.</i>	No exploration completed by other parties is relevant for the metallurgical testwork reported herein.
<i>Geology</i>	<i>Deposit type, geological setting and style of mineralisation.</i>	The ferrovanadium titanium (Ti-V-Fe) deposits represent part of a large layered intrusion (the Hart Dolerite), which was intruded c1790 Ma into the Palaeo-Proterozoic sediments and minor volcanics of the 1814 Ma Speewah Group in the East Kimberley Region of Western Australia. The deposits occur within the Speewah Dome, which is an elongated antiform trending N-S. The dome is about 30 km long and attains a maximum width of about 15 km. The Hart Dolerite sill forms the core of the dome. Since the deposit discovery in 2006, at least two distinct types of felsic granophyres and three mafic gabbros have been identified in the Hart Dolerite as follows: <ul style="list-style-type: none"> • K felsic granophyre (youngest) • Mafic granophyre • Pegmatoidal gabbro • Magnetite gabbro (host unit) • Felsic gabbro (oldest). The vanadium-titanium mineralisation is hosted within a magnetite bearing gabbro unit of the Hart Dolerite, outcropping in places and forming a generally flat dipping body that extends over several kilometres of strike and width. The layered sill is up to 400m thick containing the magnetite gabbro unit which is up to 80m thick.

		<p>Given the mode of formation, mineralisation displays excellent geological and grade continuity which was considered when classifying the Mineral Resource estimate.</p> <p>Exposure is limited and fresh rock either outcrops or is at a shallow depth of a few metres.</p> <p>Ti-V-Fe mineralisation occurs as disseminations of vanadiferous titanomagnetite and ilmenite.</p> <p>Within the tenements the vanadium deposits have been divided into three deposits – Central, Buckman and Red Hill. The test work reported in this announcement was sampled from the Central vanadium deposit (Figure 1).</p> <p>High purity alumina (HPA) is sourced from samples from the same magnetite gabbro unit within the Central deposit that hosts the Ti-V-Fe deposit.</p>
<i>Drill hole Information</i>	<p><i>A summary of all information material to the understanding of the exploration results including a tabulation of the following information for all Material drill holes:</i></p> <ul style="list-style-type: none"> ○ <i>easting and northing of the drill hole collar</i> ○ <i>elevation or RL (Reduced Level – elevation above sea level in metres) of the drill hole collar</i> ○ <i>dip and azimuth of the hole</i> ○ <i>down hole length and interception depth</i> ○ <i>hole length.</i> ○ <i>If the exclusion of this information is justified on the basis that the information is not Material and this exclusion does not detract from the understanding of the report, the Competent Person should clearly explain why this is the case.</i> 	<p>New exploration results are not being reported.</p> <p>Locations of diamond (DD) core holes, including metallurgical core holes used in this announcement, are shown on Figure 2 and Table 1.</p>
<i>Data aggregation methods</i>	<i>In reporting Exploration Results, weighting averaging techniques, maximum and/or minimum grade truncations (e.g. cutting of high grades) and cut-off grades are usually Material and should be stated.</i>	Exploration results are not being reported.
	<i>Where aggregate intercepts incorporate short lengths of high grade results and longer lengths of low grade results, the procedure used for such aggregation should be stated and some typical examples of such aggregations should be shown in detail.</i>	Continuous lengths of ½ core composited for metallurgical samples from the Low Grade and High Grade Zones.
	<i>The assumptions used for any reporting of metal equivalent values should be clearly stated.</i>	No metal equivalent values are used for reporting.
<i>Relationship between mineralisation widths and intercept lengths</i>	<i>These relationships are particularly important in the reporting of Exploration Results. If the geometry of the mineralisation with respect to the drill hole angle is known, its nature should be reported. If it is not known and only the down hole lengths are reported, there should be a clear statement to this effect (e.g. 'down hole length, true width not known').</i>	Due to the very shallow dip of the mineralisation, the vertical metallurgical DD core holes represent almost the true width of the mineralisation.
<i>Diagrams</i>	<i>Appropriate maps and sections (with scales) and tabulations of intercepts should be included for any significant discovery being reported. These should include, but not be limited to a plan view of drill hole collar locations and appropriate sectional views.</i>	Figure 2 shows the location of diamond core holes within the Central Vanadium deposit referred to in this announcement.

<i>Balanced reporting</i>	<i>Where comprehensive reporting of all Exploration Results is not practicable, representative reporting of both low and high grades and/or widths should be practiced to avoid misleading reporting of Exploration Results.</i>	Reports on previous metallurgical results can be found in ASX Releases that are available on our website, including announcements 1 April 2010, 15 July 2010, 9 November 2010, 8 February 2012, 21 April 2017, 21 August 2017, 9 October 2017, 4 December 2017, 30 January 2018, 27 February 2018, 21 March 2018, 25 June 2018, 23 July 2018, 15 October 2018, 19 November 2018, 18 January 2019, 1 March 2019, 21 March 2019, 22 March 2019, 9 May 2019, 7 June 2019, 27 September 2019, 26 November 2019, 6 December 2019, 22 January 2020, 24 March 2020, 23 April 2020, 13 May 2020, 17 June 2020 and 7 September 2020.
<i>Other substantive exploration data</i>	<i>Other exploration data, if meaningful and material, should be reported including (but not limited to): geological observations; geophysical survey results; geochemical survey results; bulk samples – size and method of treatment; metallurgical test results; bulk density, groundwater, geotechnical and rock characteristics; potential deleterious or contaminating substances.</i>	Updated vanadium resource estimates in accordance with the JORC 2012 guidelines were reported in KRR ASX announcement 26 May 2017. 1 April 2019 and 6 November 2019.
<i>Further work</i>	<i>The nature and scale of planned further work (e.g. tests for lateral extensions or depth extensions or large-scale step-out drilling). Diagrams clearly highlighting the areas of possible extensions, including the main geological interpretations and future drilling areas, provided this information is not commercially sensitive.</i>	Further metallurgical tests are planned to increase metal recoveries, shorten leach times and reduce acid consumption, and trialing selective chemical precipitation, thermal hydrolysis, ion exchange and solvent extraction methods to precipitate vanadium pentoxide, titanium dioxide, iron oxide and high purity alumina (HPA).