



predictive  
discovery

# EXPLORATION AND DISCOVERY AT THE BANKAN GOLD PROJECT LOCATED IN GUINEA'S SIGUIRI BASIN

AFRICA DOWNUNDER CONFERENCE  
NOVEMBER 2020 | ASX:PDI



# Forward looking statements and disclaimer

This presentation contains only a brief overview of Predictive Discovery Ltd and its associated entities ("PDI or Predictive") and their respective activities. The contents of this presentation, including matters relating to the geology of the projects, may rely on various assumptions and subjective interpretations which it is not possible to detail in this presentation and which have not been subject to any independent verification.

This presentation contains a number of forward-looking statements. Known and unknown risks and uncertainties, and factors outside of Predictive's control, may cause the actual results, performance and achievements of PDI to differ materially from those expressed or implied in this presentation.

To the maximum extent permitted by law, PDI does not warrant the accuracy, currency or completeness of the information in this presentation, nor the future performance of PDI, and will not be responsible for any loss or damage arising from the use of the information. The information contained in this presentation is not a substitute for detailed investigation or analysis of any particular issue. Current and potential investors and shareholders should seek independent advice before making any investment decision in regard to Predictive or its activities.

## **Competent Person Statement**

The information in this report that relates to Exploration Results and the near-Bongou Exploration Target is based on information compiled by Mr Paul Roberts who is a Fellow of the Australian Institute of Geoscientists. Mr Paul Roberts is a full time employee of the company and has sufficient experience that is relevant to the style of mineralisation and type of deposit under consideration to qualify as a Competent Person as defined by the 2012 Edition of the 'Australasian Code for Reporting of Exploration Results, Mineral Resources and Ore Reserves'. Mr Roberts consents to the inclusion in the report of the matters based on his information in the form and context in which it appears.

The Mineral Resource estimation and classification of Mineral Resources for the Bongou deposit is based on, and fairly represents, information and supporting documentation compiled by Mr Richard Gaze. Mr Gaze is a full-time employee of Golder Associates Pty Ltd and a Member and Chartered Professional of the Australasian Institute of Mining and Metallurgy. Mr Gaze has sufficient experience that is relevant to the style of mineralisation and type of deposit under consideration and to the activity being undertaken to qualify as a Competent Person as defined in the Australasian Code for Reporting of Exploration Results, Mineral Resources and Ore Reserves (2012 Edition). Mr Gaze consents to the inclusion of the estimates, classification and the supporting information in the form and context in which it appears.



# DISCOVERING GOLD IN GUINEA'S SIGUIRI BASIN

With legacy portfolio of Cote D'Ivoire/Burkina Faso Joint Ventures and interests



## WEST AFRICAN GOLD PROJECTS

- 100% Owned Guinea
- 100% Owned Burkina
- PDI Interests
- Resolute JV
- Mines
- Glomin JV





# Corporate Overview

## CAPITAL STRUCTURE

**1,001m** **A\$15m**  
SHARES ON ISSUE CASH

**A\$60m** **A\$45m**  
MKT CAP at A\$0.06 ENTERPRISE VALUE

**86m**  
OPTIONS  
Exc. at \$0.018

**TOP 2 HOLDERS**  
CAPITAL DI - 11%  
LOWELL RESOURCES - 5%

# Board and Management

Respected exploration focused team...

..supported by a disciplined commercial Board



**PAUL ROBERTS**  
BSc, MSc, FAIG  
**Managing Director**

Paul is a geologist with 11 years experience working in West Africa and is associated with a number of discoveries including the Henty gold deposit in Tasmania, and the PDI Kaninko discovery.



**PHILLIP JACKSON**  
B. Juris LLB, MBA, FAICD  
**Non-executive Chairman**

Phillip has had a long career in the petroleum and mining industries along with extensive experience as a public company director, particularly in the resources sector.



**BARRY MURPHY**  
B.A, Hons, Ph.D  
**Chief Geologist**

Barry is a structural geologist with 10+ years experience working in West Africa with experience in Australia, Sudan, DRC, South America, Indonesia and Europe. Barry played a major role in the the regional targeting work that led to the Kaninko discovery.



**STEVEN MICHAEL**  
B.Com, CA, MAICD  
**Non-executive Director**

Steven has over 25 years' experience in the global resources sector specialising in corporate finance and equity capital markets.



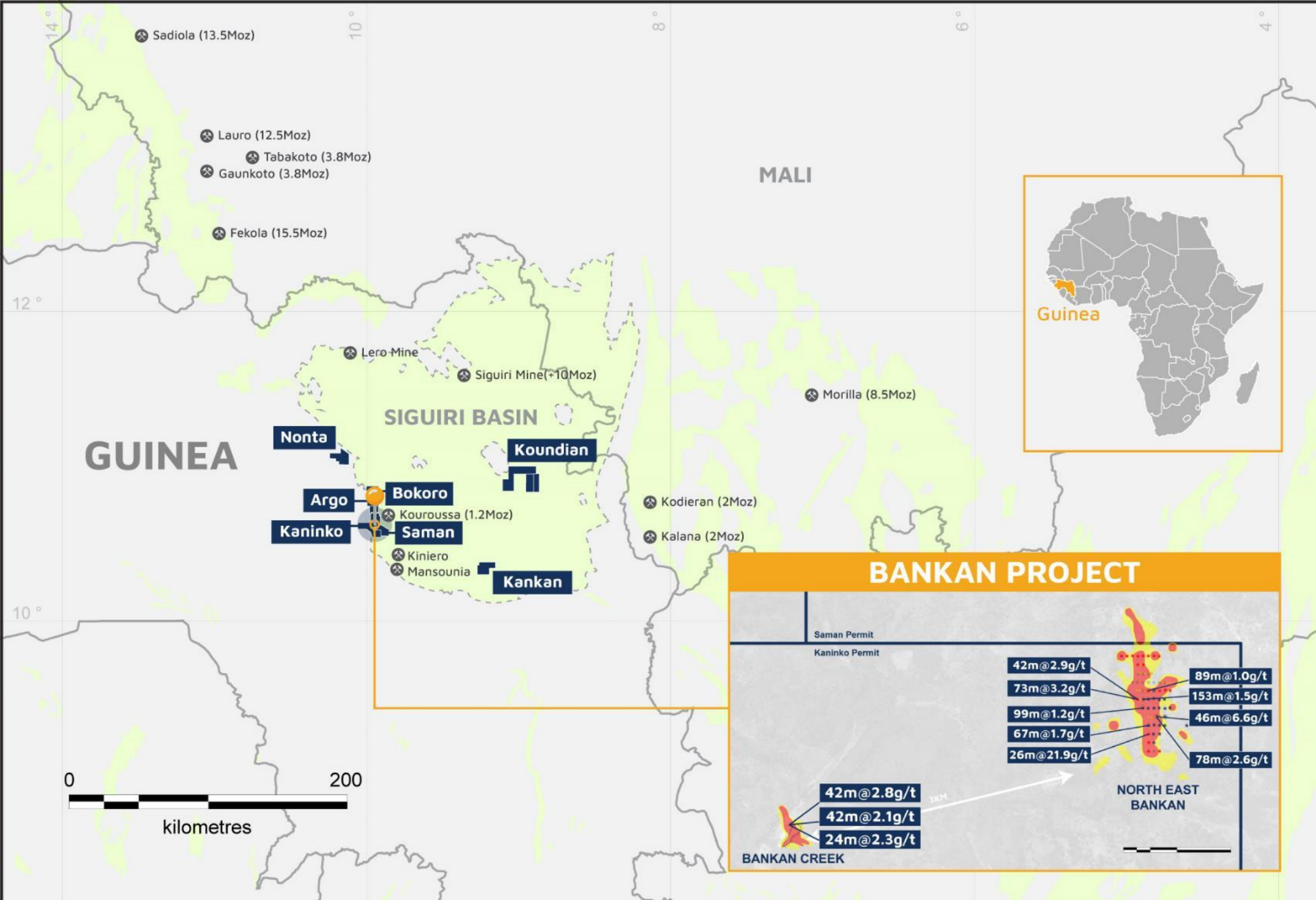
**AIME NGANARE**  
MSc, MBA  
**Principal Geologist**

Aimé has over 18 years of experience in orogenic gold exploration in Central and West Africa, including his role as General Manager of the Geological Survey of the Central African Republic.





# GUINEA PORTFOLIO



## BANKAN GOLD PROJECT & GUINEA LANDHOLDING

- Bankan Project
- PDI Permits
- Siguiri Basin
- Birimian Greenstone
- Regional Mines





# THE BANKAN GOLD PROJECT

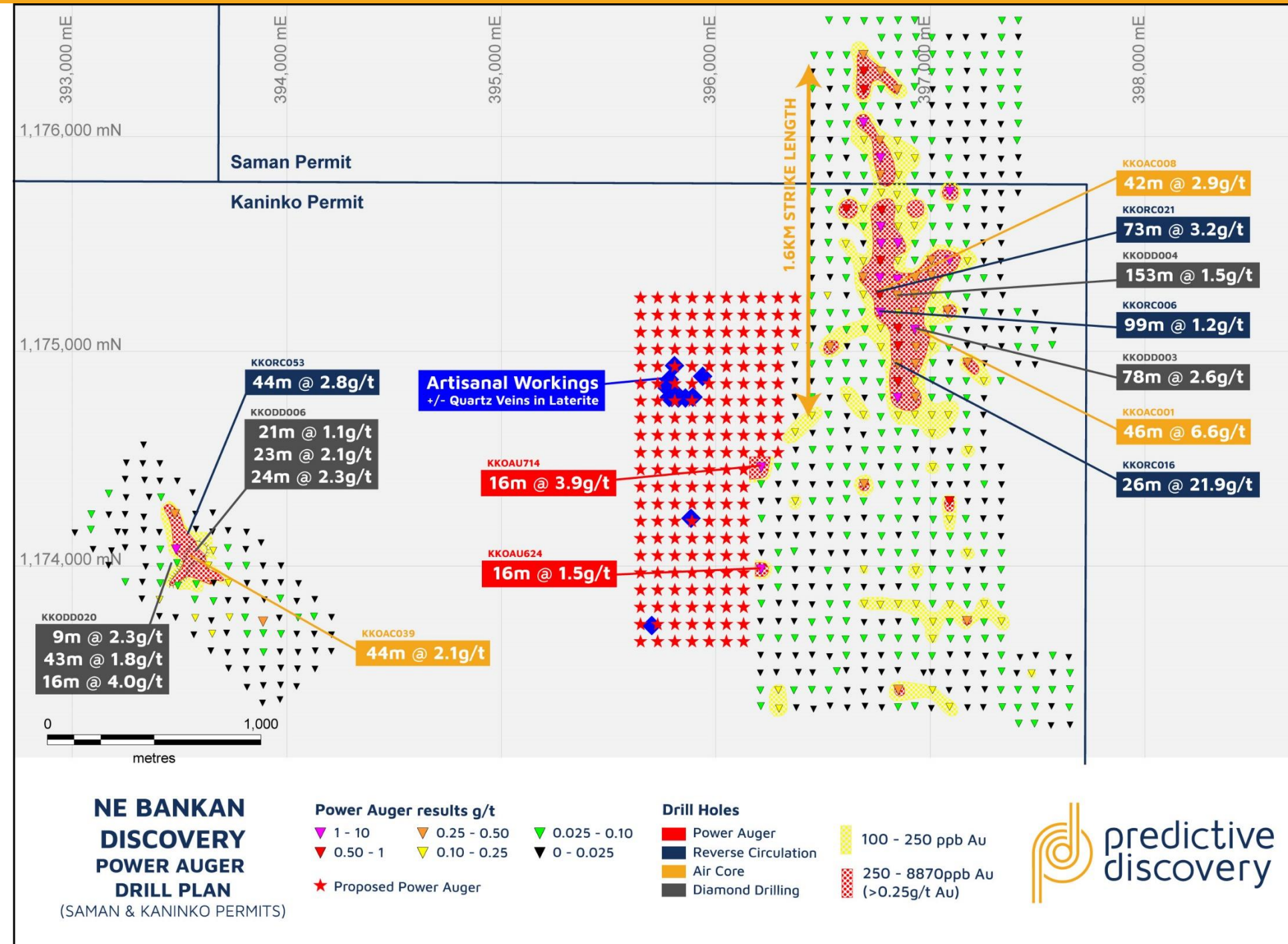
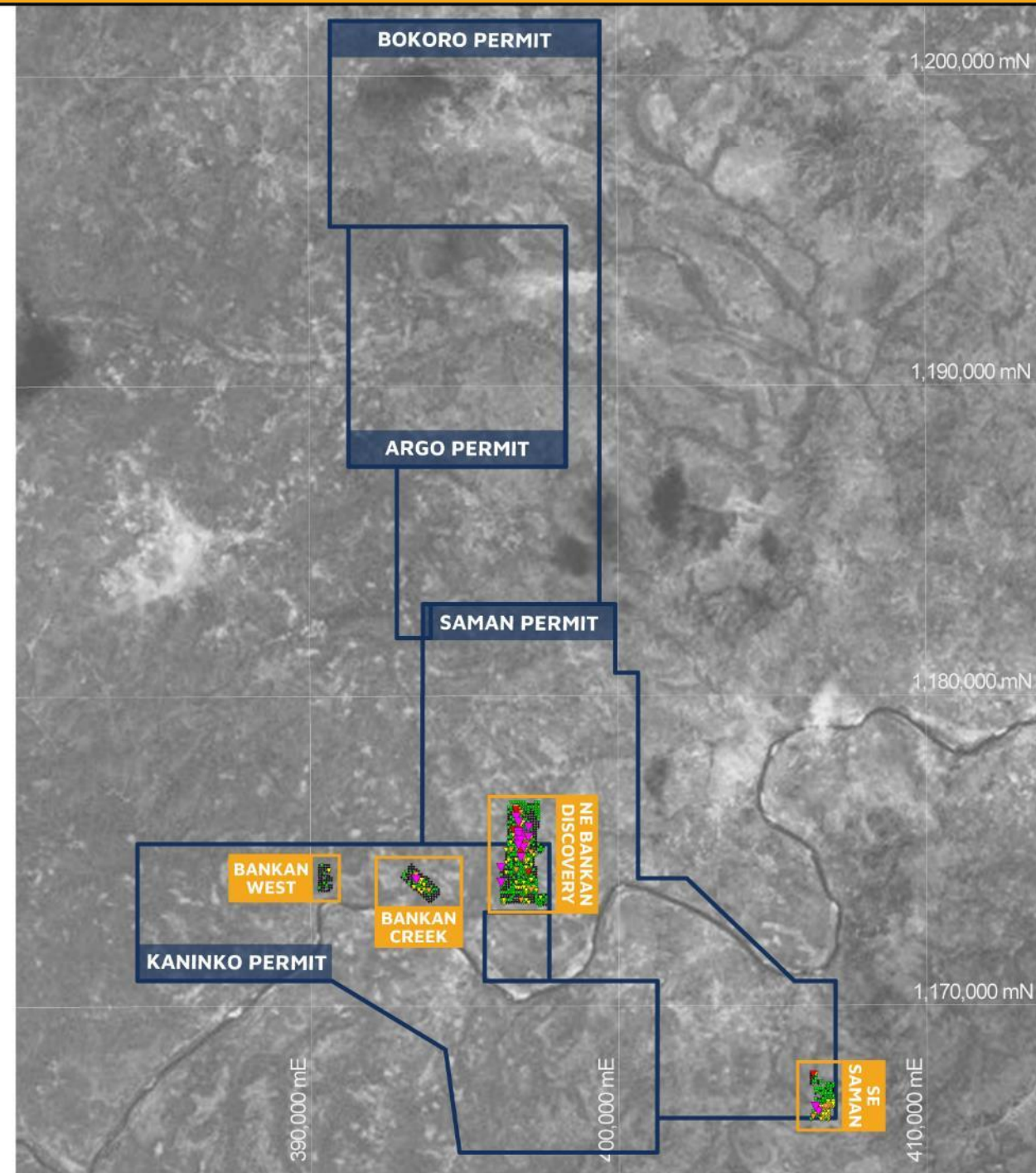
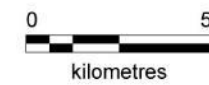
Two discoveries with most of the Project area unexplored

## BANKAN PROJECTS PERMITS & PROSPECTS

- PDI Prospects
- PDI Tenements

### Power Auger Results g/t

- 1 - 10
- 0.50 - 1
- 0.25 - 0.50
- 0.10 - 0.25
- 0.025 - 0.10
- 0 - 0.025



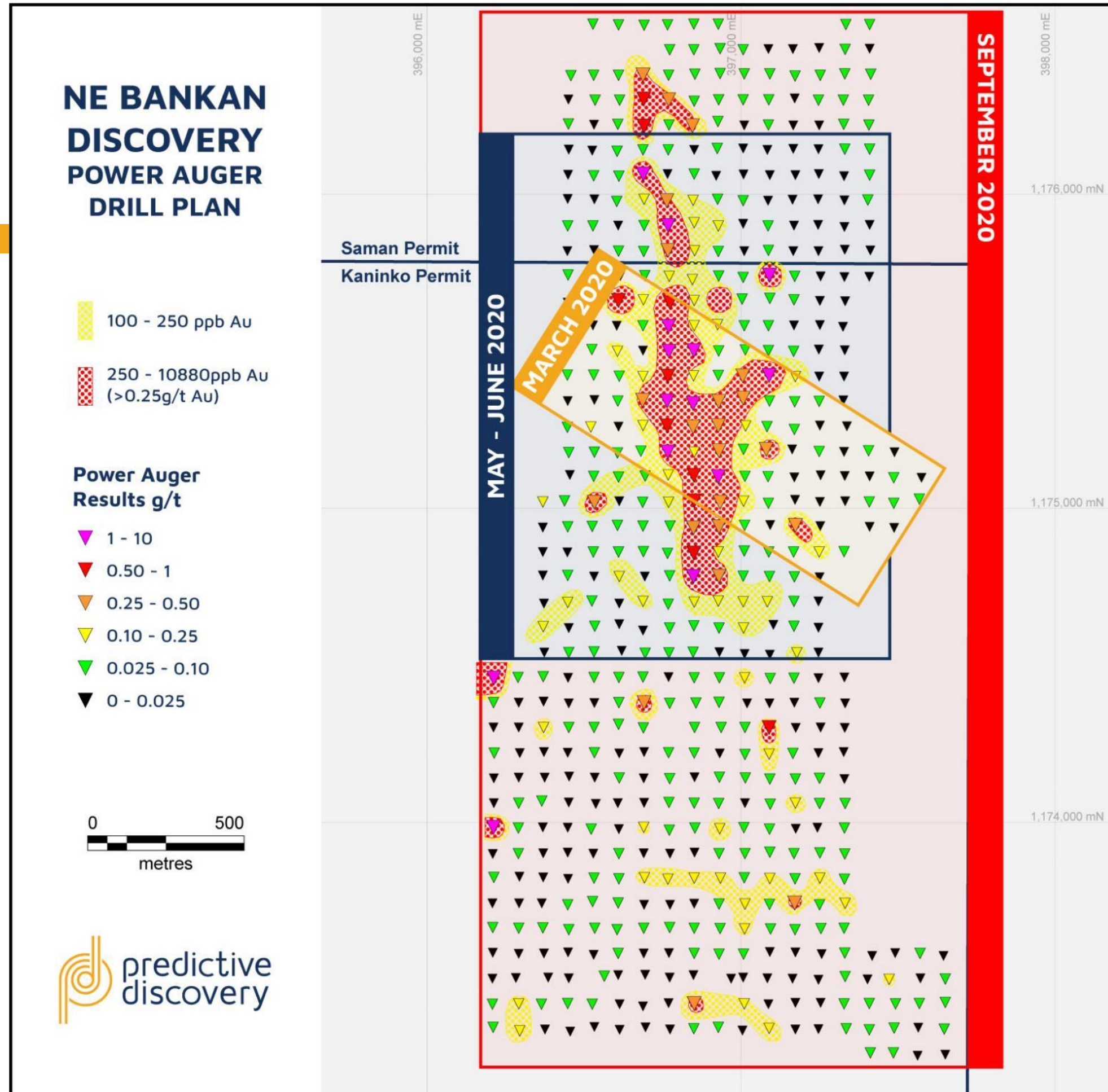


# Power auger programs - a proven gold finder at the Bankan Project

- Shallow transported cover across the Bankan Project
- Limited artisanal workings to guide drilling
- Shallow power auger drilling highlights areas of anomalous to high gold values underneath transported cover
- Auger delivers targets for follow up AC, RC and DD drilling
- Exploration method has been successful with discovery of NE Bankan and Bankan Creek lodes
- Most of the Bankan Project remains untouched by auger programs
- **EXECUTING A STRATEGY TO SUBSTANTIALLY GROW THE AUGER GOLD FOOTPRINT AT NE BANKAN AND ACROSS THE BANKAN PROJECT**

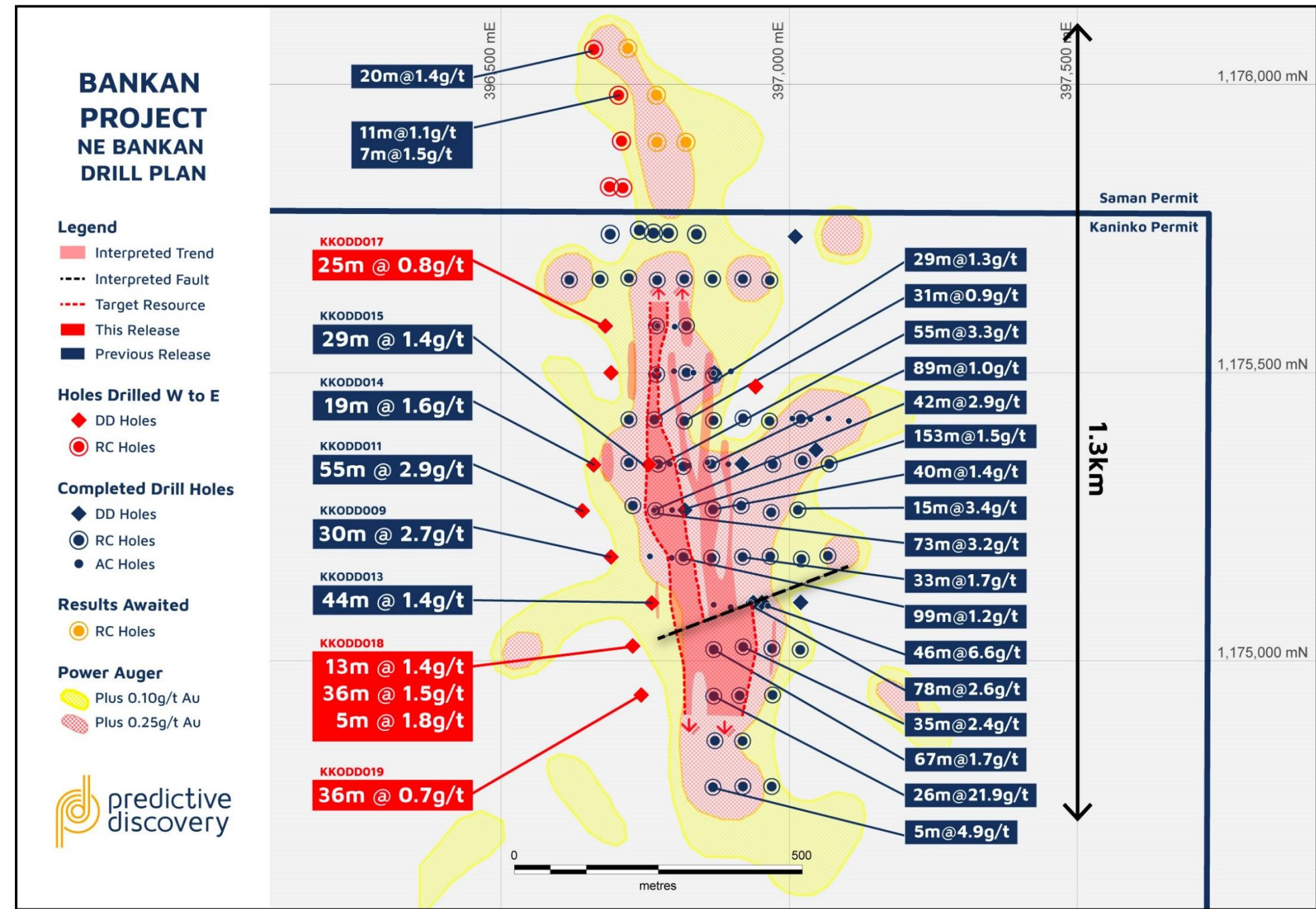
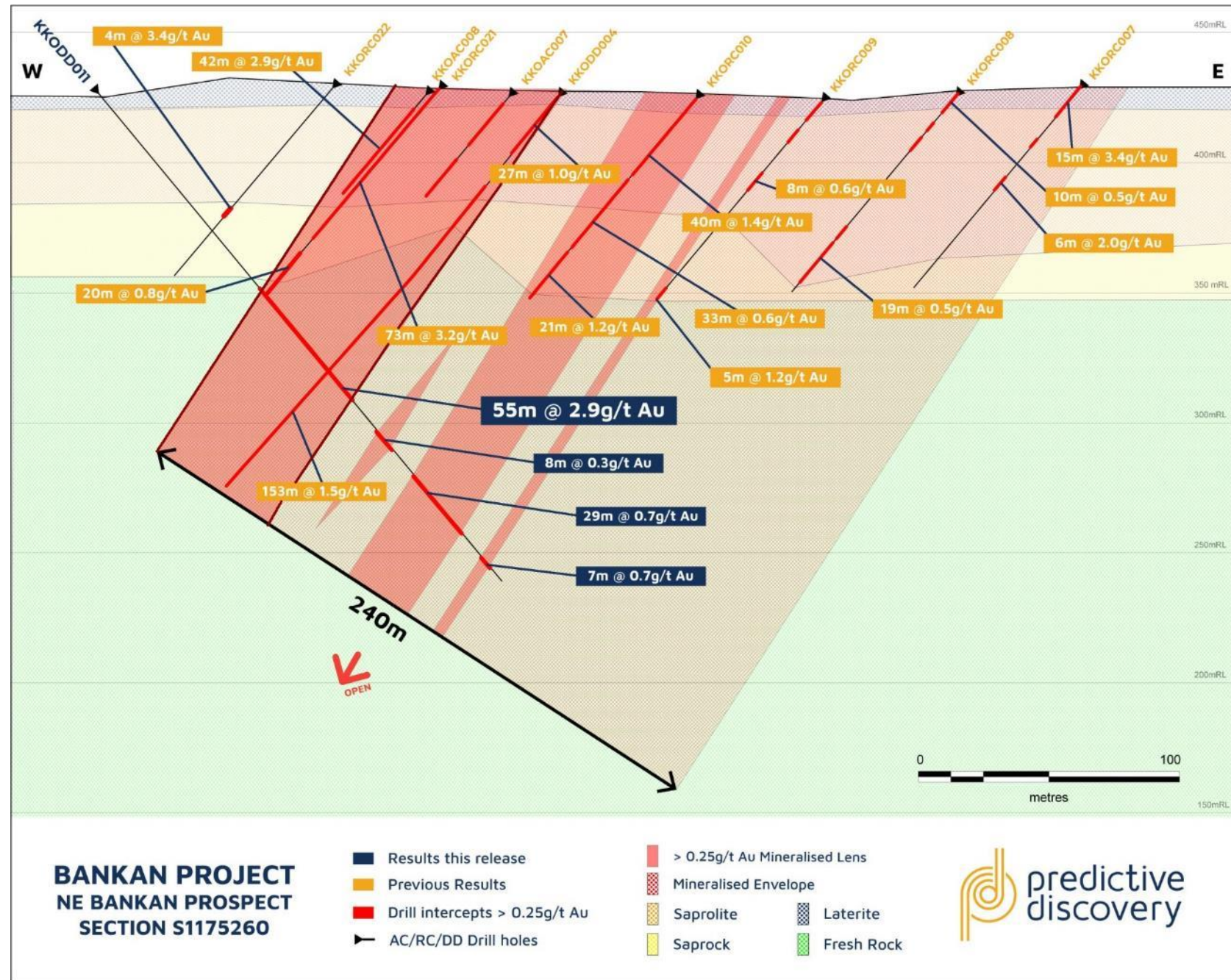


<sup>1</sup>ASX Announcement – 26 February 2020  
<sup>2</sup>ASX Announcement – 27 May & 30 June 2020  
<sup>3</sup>ASX Announcement – 3 September 2020



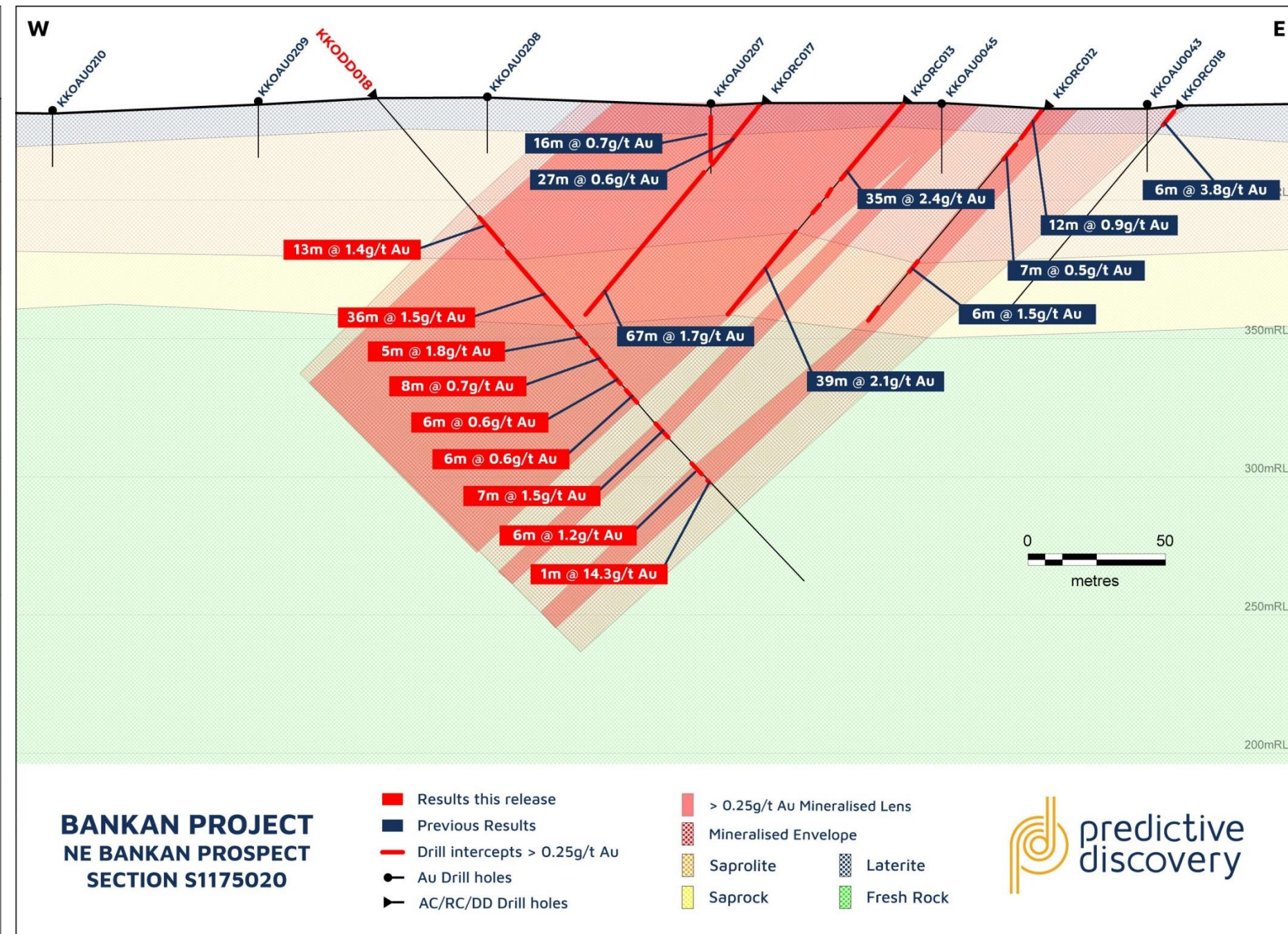
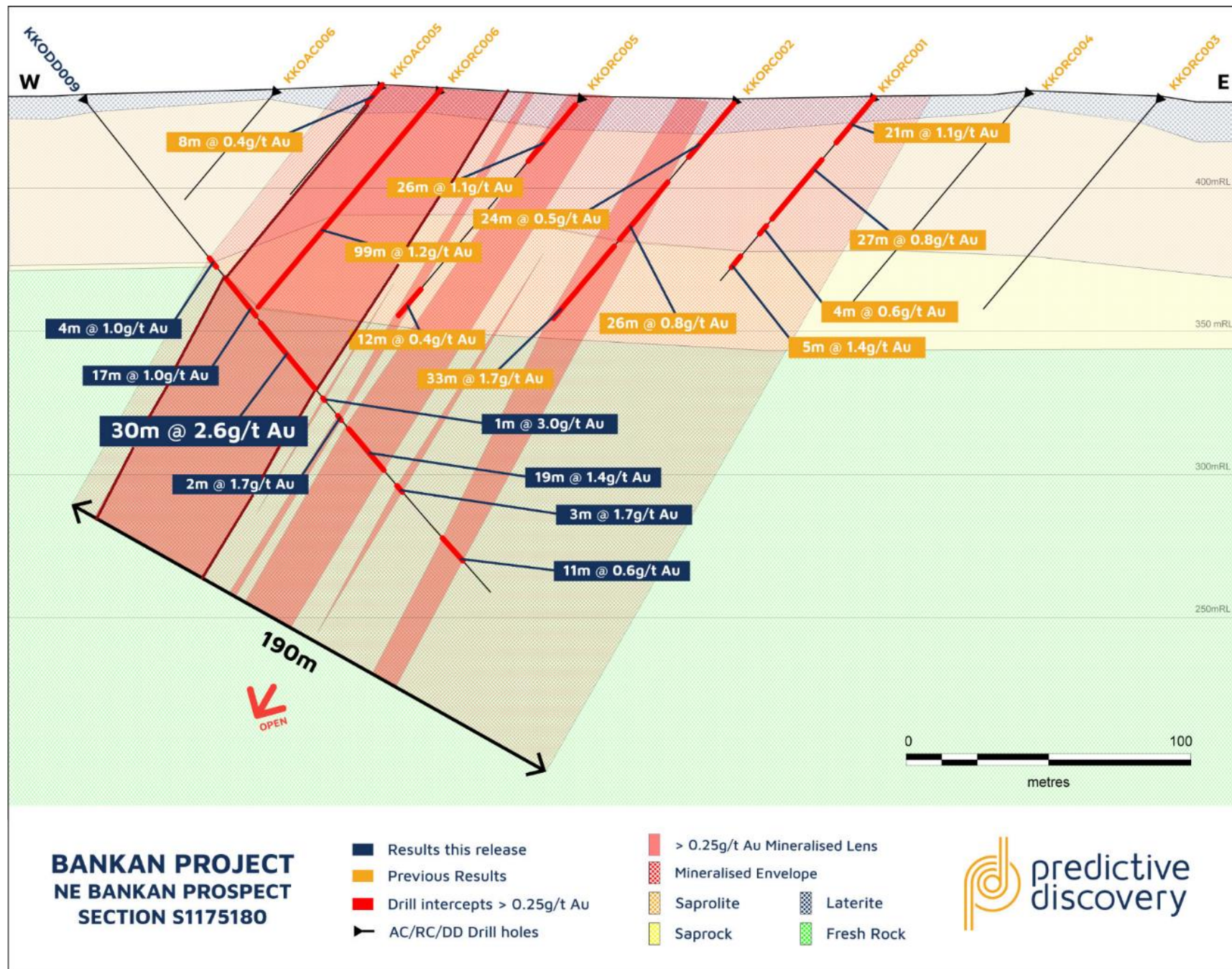


# Bankan Project NE Bankan Prospect





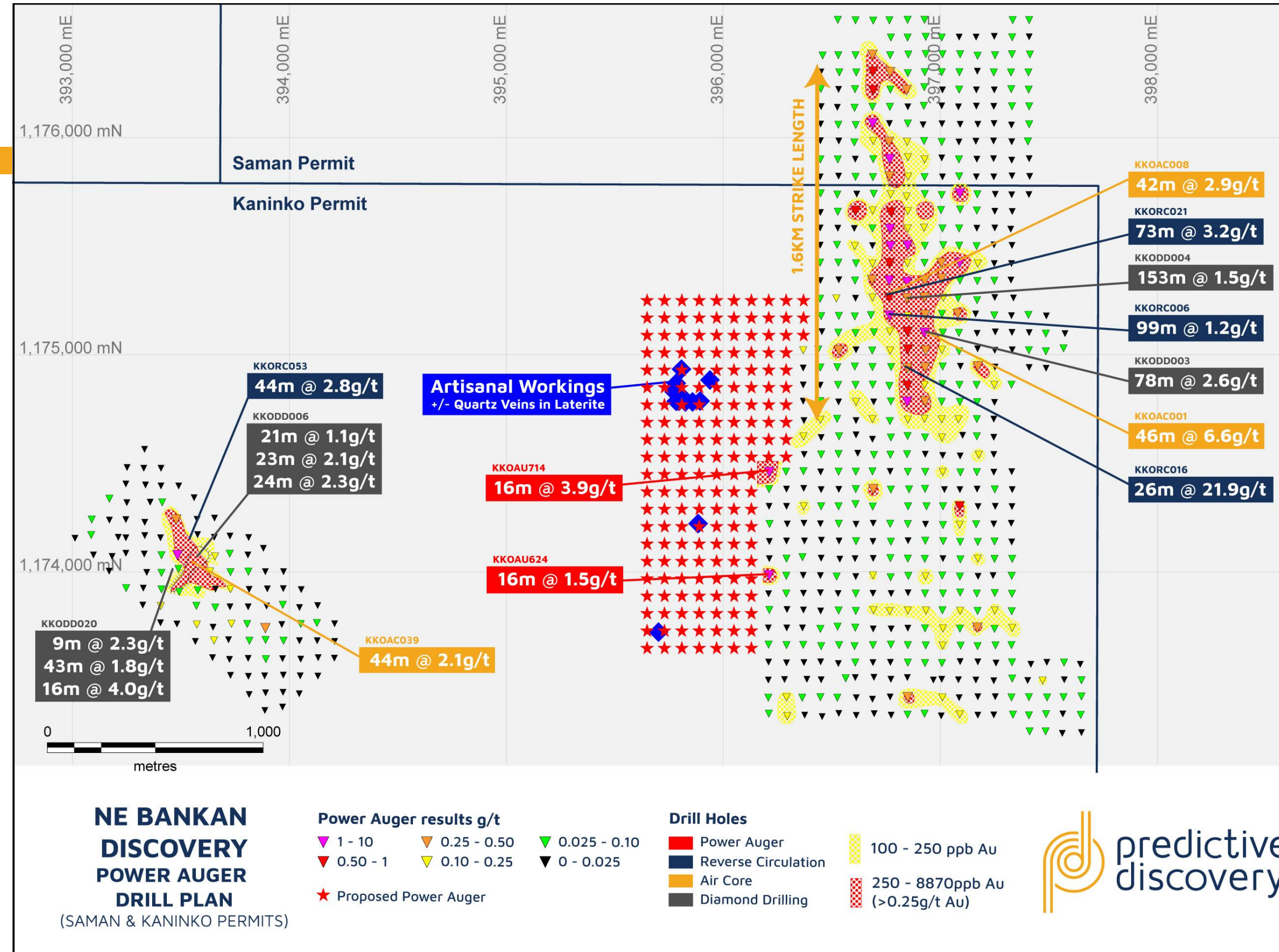
# Bankan Project NE Bankan Prospect





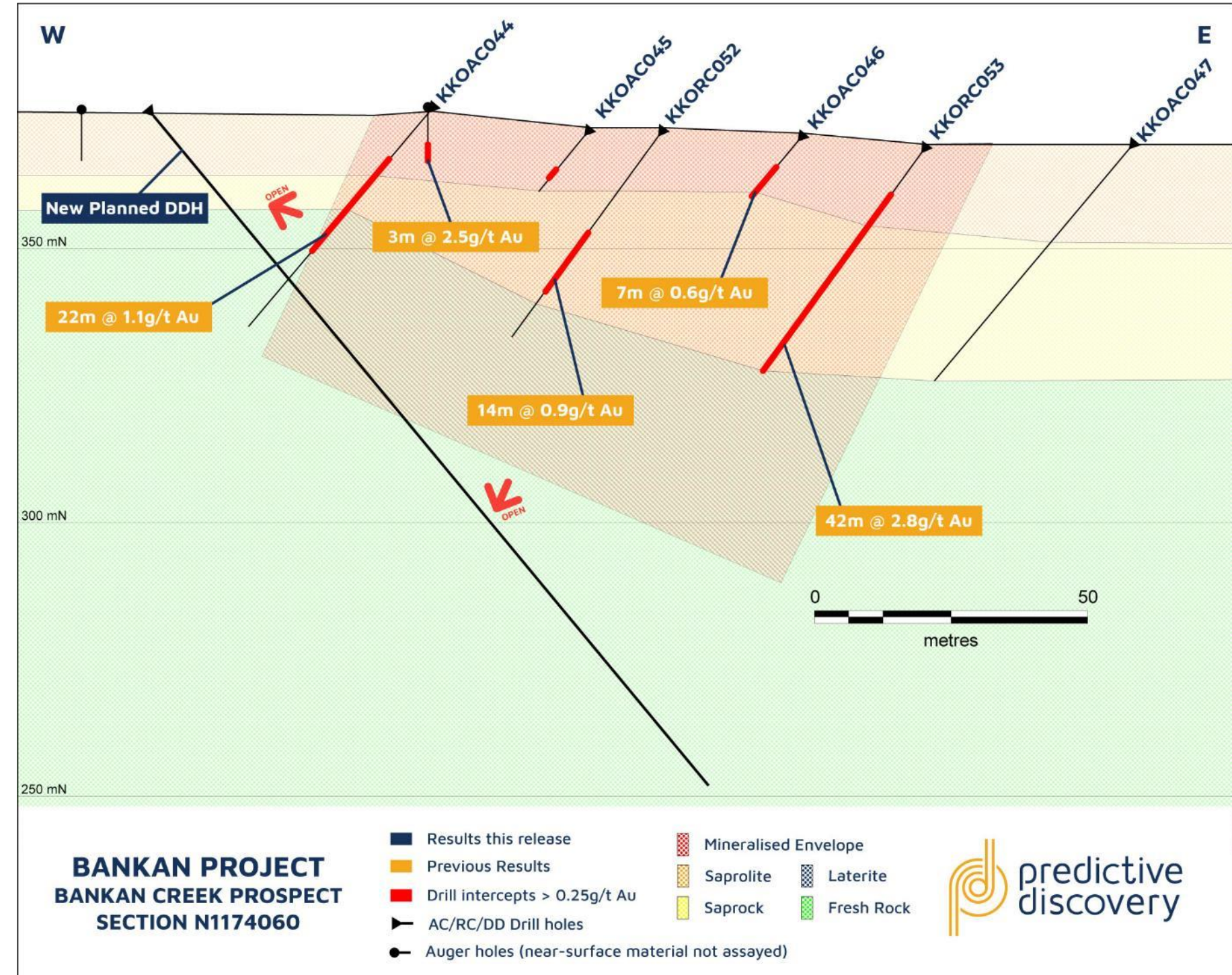
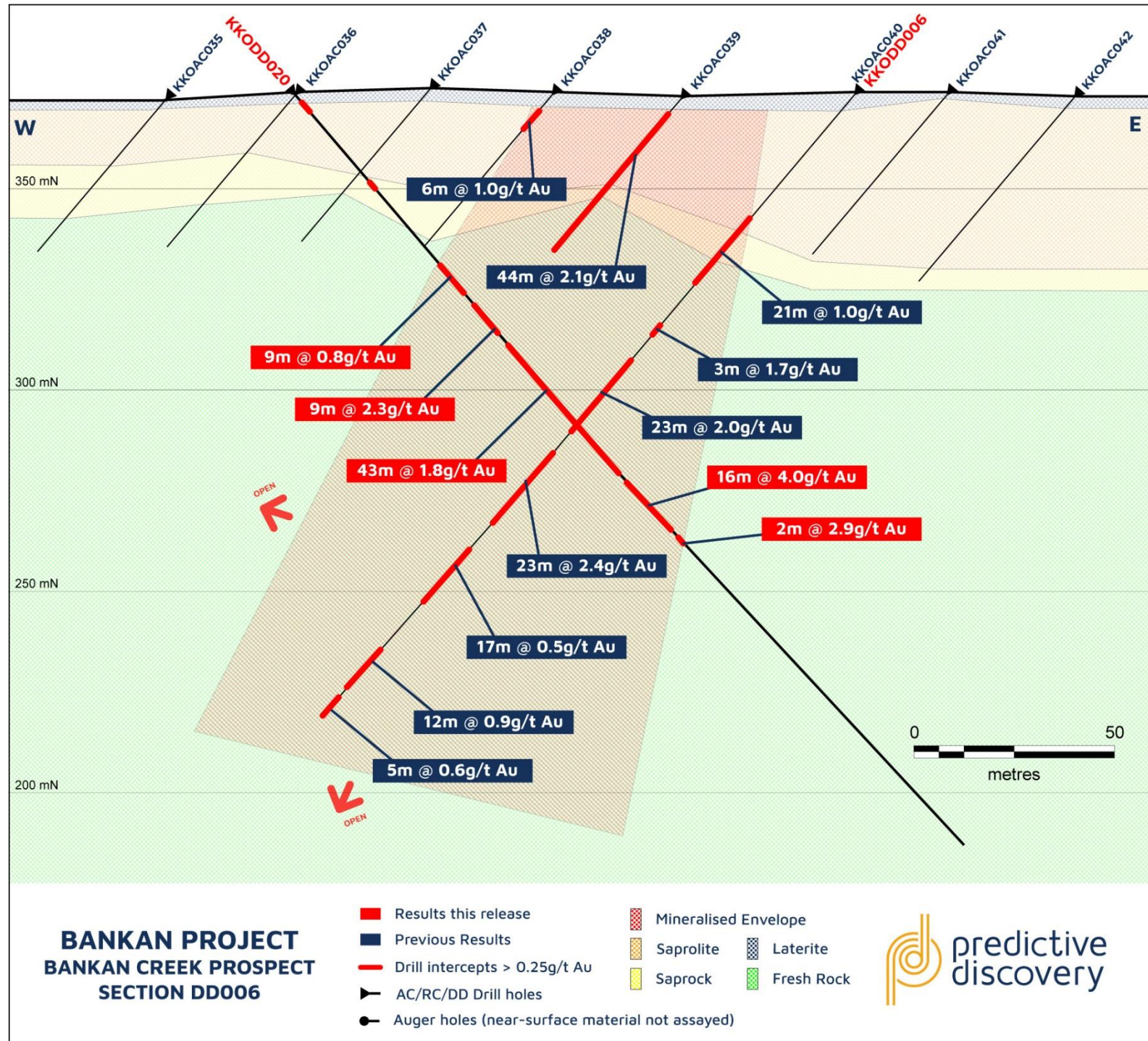
# Prospect Proximity

NE Bankan & Bankan Creek  
<3km apart





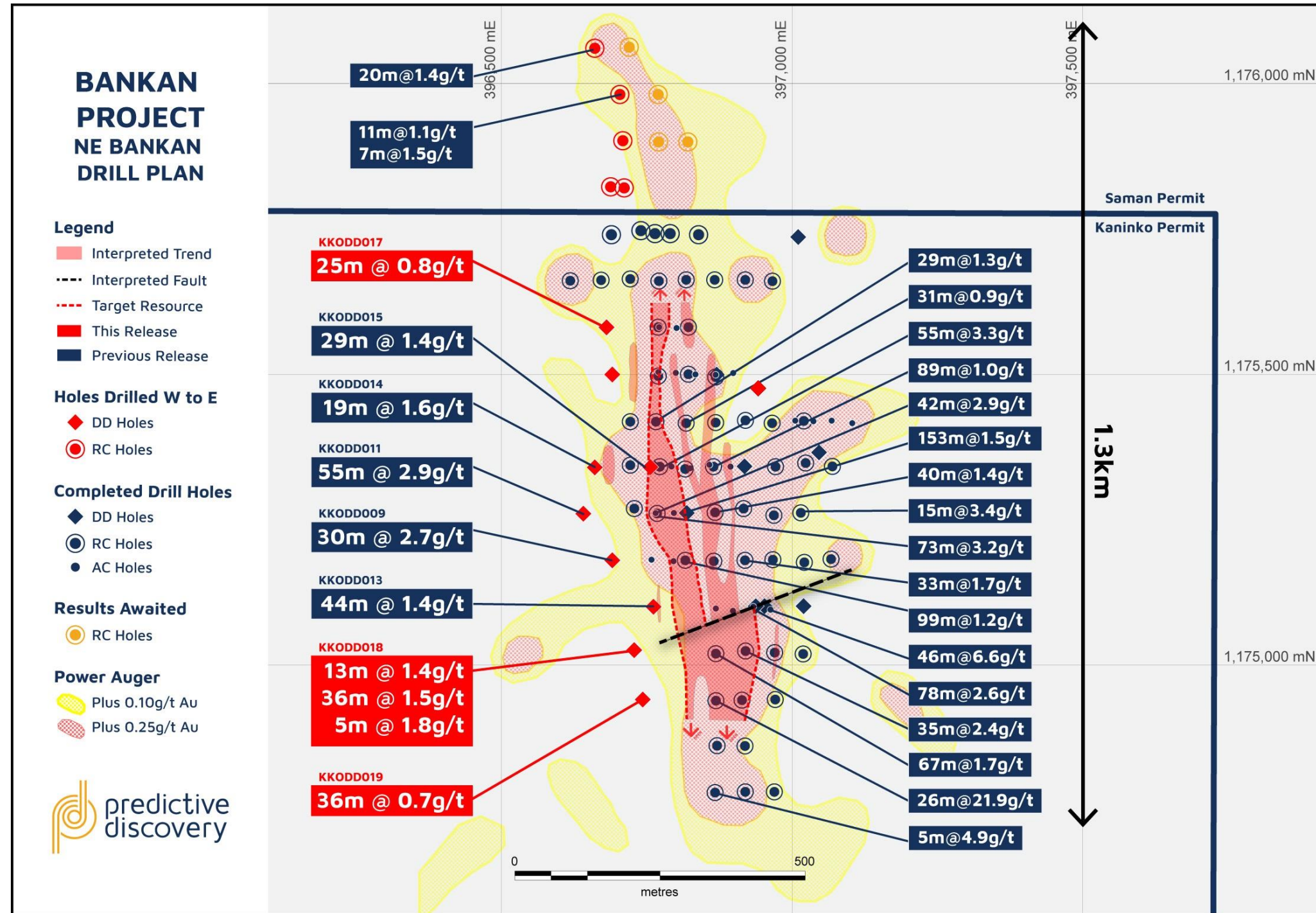
# Bankan Project Bankan Creek Prospect





# Bankan Project Next Steps

- Large, powerful multipurpose RC/DD rig now starting
- Power auger rig to explore area between NE Bankan and Bankan Creek in progress
- RC/DD approx. 10,000m, power auger approx. 15,000m
- RC/DD rig to:
  - Test western gold orebody (including 55m at 2.9g/t gold) at depth/along strike
  - Define shallow mineralisation on some cross sections to determine overall widths of oxide gold mineralised zone
  - Test postulated ENE high-grade structures on east side
  - Explore new areas defined by power auger
- Double up RC/DD rigs to accelerate JORC drillout in December or January
- Power auger/aeromagnetics to explore entire 350km<sup>2</sup> area progressively from now through 2021
- Metallurgical study to commence January 2021
- **KEY MILESTONE – JORC RESOURCE BY MID-2021**





# Cote D'Ivoire-Burkina Faso Interests

## Resolute Joint Venture (ASX:RSG) – Cote D'Ivoire

Equity: RSG 76.5% - PDI 23.5%

Land package encompassing 2,549 km<sup>2</sup>

## Burkina Faso

Equity: PDI 100% - preparing for farmout

Land package encompassing 722 km<sup>2</sup>

## Glomin Joint Venture – Cote D'Ivoire

Glomin Mining has the right to earn up to 80% to Mining Lease grant

Land package encompassing 1,135 km<sup>2</sup>

## Bobosso Project - Cote D'Ivoire

(PDI - Mine development payments)

- Minimum payment of US\$2.15M to PDI on first mine development
- US\$4.30/ore reserve Oz Au as defined in the BFS and due upon first production



### WEST AFRICAN GOLD PROJECTS

- 100% Owned Guinea
- 100% Owned Burkina
- PDI Interests
- Resolute JV
- ⚒ Mines
- Glomin JV





# BANKAN'S DUAL-TRACK STRATEGY OF EXPLORATION AND DEVELOPMENT

1

## Huge Exploration Upside:

Much of Bankan remains unexplored with significant opportunity for further greenfields gold discoveries through regional auger programs designed to identify targets for follow-up deeper drilling programs

2

## Bankan-2 Drilling program: October 2020

DD and RC drilling to recommence shortly with programs to test the NE Bankan and Bankan Creek Prospects along strike and at depth. Power auger drilling starting imminently to test new targets.

3

## Metallurgical testwork: Q1 2021

Testing both weathered and fresh gold mineralisation

4

## Development pathway: mid-2021 milestone

Drilling designed to deliver Maiden JORC-compliant Resource in by mid-2021





predictive  
discovery

[predictivediscovery.com](http://predictivediscovery.com)

Level 2, 33 Ord St, West Perth,  
Western Australia 6005

Phone | +61 8 9216 1020

Mob. | +61 402 857 249

Email | [paul.roberts@predictivediscovery.com](mailto:paul.roberts@predictivediscovery.com)

