



10 NOV 2020

ASX: TMG

ASX ANNOUNCEMENT

Trigg Mining Investor Presentation

Trigg Mining (ASX: TMG) is pleased to release a copy of the presentation to be provided by Keren Paterson, Managing Director, as part of the *Resources Rising Stars 2020 Investor Forum* on 11 November 2020 at 3.40pm WST.

Investors can register online to watch the presentation via the following link:

https://www.bigmarker.com/series/Resources-Rising-Stars-2020-Investor-Conference/series_summit

This announcement was authorised to be given to ASX by the Board of Directors of Trigg Mining Limited.

Keren Paterson
Managing Director & CEO
Trigg Mining Limited

For more information please contact:

Keren Paterson
Managing Director
[Trigg Mining Limited](#)
(08) 6114 5685
info@triggmining.com.au

Nicholas Read
Investor and Media Relations
[Read Corporate](#)
(08) 9388 1474
nicholas@readcorporate.com.au

Resources Rising Stars
11 November 2020

TRIGG MINING LIMITED

The new Sulphate of Potash growth story

#mining4farmers

Keren Paterson
Managing Director & CEO



INVESTMENT HIGHLIGHTS

Modern, purpose-driven exploration company helping to deliver global food security



Sustainable mining – solar evaporation of hyper-saline brine



Sulphate of potash – a premium mineral fertiliser essential for high-value agricultural products



Located in the low-risk jurisdiction of the north-eastern Goldfields of Western Australia



Excellent infrastructure – road, rail, gas & airstrips



Strategic landholding – 100% rights to 1,585km² of tenure across two solar sulphate of potash projects



Lake Throssell – a rapidly evolving **high-grade SOP** discovery with results up to 14,800mg/L SOP



Lake Rason – 6Mt @5,080mg/L SOP Inferred Mineral Resource with potential to expand



Strong global market and demand fundamentals driven by global mega trends



Genuine potential to develop a long-life low-cost primary source of organic sulphate of potash



CORPORATE OVERVIEW

Board of Directors

Managing Director & CEO	Keren Paterson
Non Executive Chairperson	Michael (Mike) Ralston
Non Executive Director	William (Bill) Bent

Management Team

Company Secretary	Karen Logan
Project Manager	Chris Williams
Exploration Manager	Jason Cherry
Technical Manager	Neil Inwood

Top 10 Shareholders

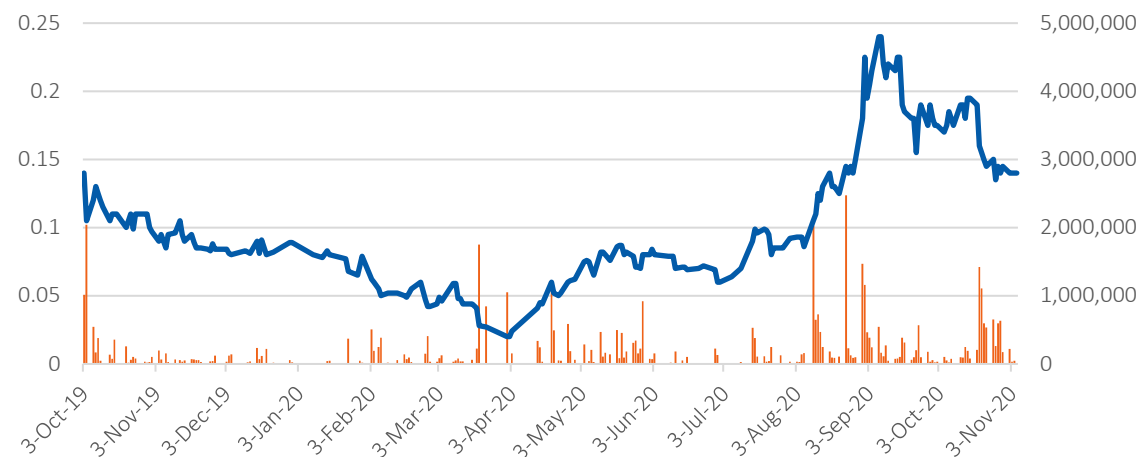
Michael Ralston <Ralston Family>	6.58%
Susetta Holdings <Wheeler Family>	3.91%
KP Consulting Group <SSB>	3.58%
William Bent <Bent Family>	3.56%
Julian Rodney Stephens <One Way>	2.63%
Kenneth William Vidler	2.01%
Keren Paterson	1.88%
Silverfox Holdings <Silverfox Family>	1.83%
Vineeta Parshotam Bathija Daksh Kumar	1.51%
Sunset Capital Management <Sunset Superfund>	1.43%
Total	28.93%

ASX Codes

TMG – Ordinary Shares TMGO & TMGOA– Listed Options

Ordinary Shares (including escrow)	80,004,761
\$0.19 listed options (exp 31/10/21)	30,137,500
\$0.24 listed options (exp 31/10/2022)	10,950,326
\$0.19 unlisted options (exp 31/10/21)	3,000,000
\$0.24 unlisted options (exp 07/01/23)	2,000,000
Vendor Performance Rights	4,235,626
Share Price (09/11/20)	\$0.13
Market Capitalisation (undiluted)	\$10.4 million
Cash (30/09/20)	\$1.3 million
Proceeds from Renounceable Rights issue (15/10/20)	<u>\$3.1 million</u>
	\$4.4 million

TMG Share Price Performance



POSITIONED TO RAPIDLY RESPOND TO GROWING DEMAND FOR HIGH-QUALITY FERTILISERS

100% ownership of two solar Sulphate of Potash projects located near Laverton in Western Australia:

- 1 **Lake Throssell SOP Project**
High-grade results of up to 14,800mg/L SOP
- 2 **Lake Rason SOP Project**
Inferred Mineral Resource of 6Mt SOP¹

¹. See Competent Person Statement.

1,585km² of strategic tenure located close to energy and transport infrastructure

Over 380km² of playa lakes and 140km of paleochannels – all prospective for SOP mineralization

Experienced and passionate team successful in finding, developing and operating sustainable mines in Western Australia

Total Drainable Mineral Resources (TDMR): ASX announcements - Australian Potash (05/08/2019), Salt Lake Potash (11/10/2019), Kalium Lakes (01/07/2020) and Trigg Mining (02/03/2020). All figures are rounded.





WHY SULPHATE OF POTASH?



WHAT IS SULPHATE OF POTASH (SOP)?

SOP (Potassium Sulphate, K_2SO_4) is an essential fertiliser for high-value, chloride sensitive crops such as fruit, vegetables, avocados, coffee beans, grapes, tree nuts, cocoa, anything grown under glass and in arid and acidic soils.

POTASSIUM

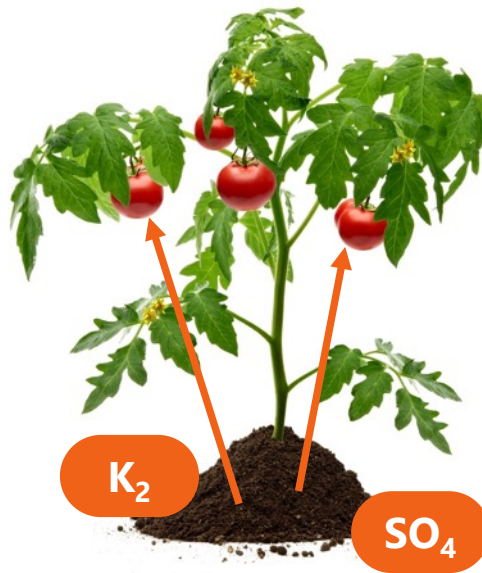
(K_2)

- › Essential for all living things
- › Promotes resistance to disease, drought and frost
- › Improves quality, taste and appearance
- › Required in large quantities for proper plant growth and optimal crop yields

SULPHATE (SO_4)

SULPHUR + OXYGEN

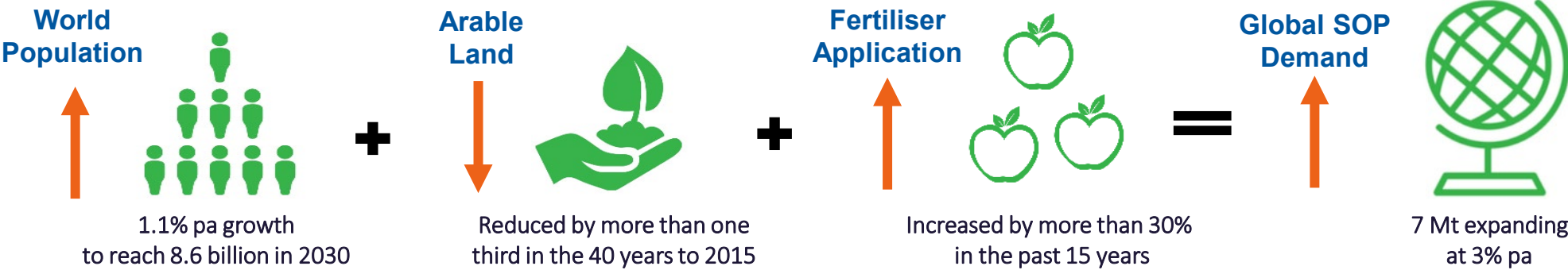
- › Necessary for the formation of chlorophyll and plant proteins
- › Increases crop yields and produce quality



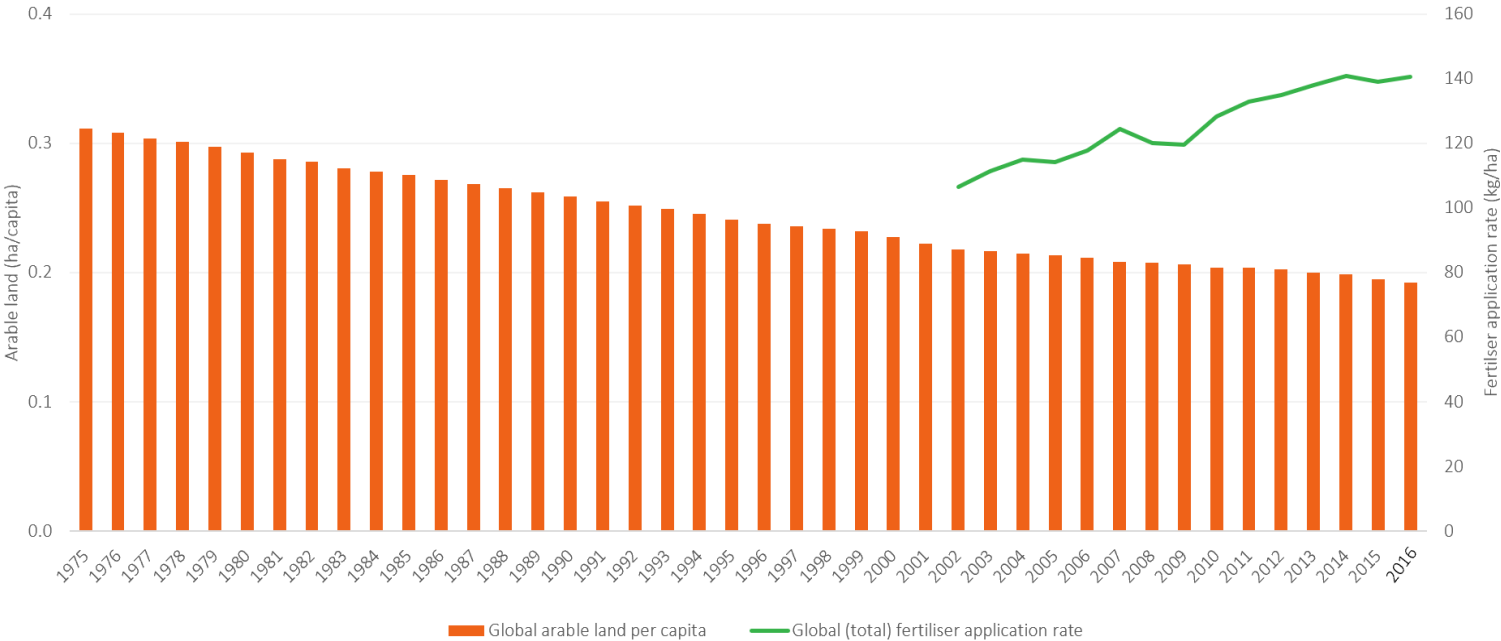
Vs. MURIATE OF POTASH (MOP)

Muriate of Potash (Potassium Chloride) is a cheaper, more abundant source of potash, BUT it contains almost 50% chloride which is detrimental to chloride-sensitive crops and arid soils. It also contains no sulphur.

STEADY DEMAND GROWTH DRIVEN BY GLOBAL MEGA TRENDS



Global arable land and fertiliser application rates

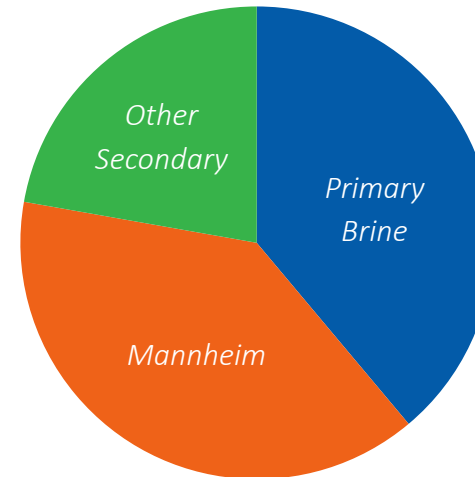
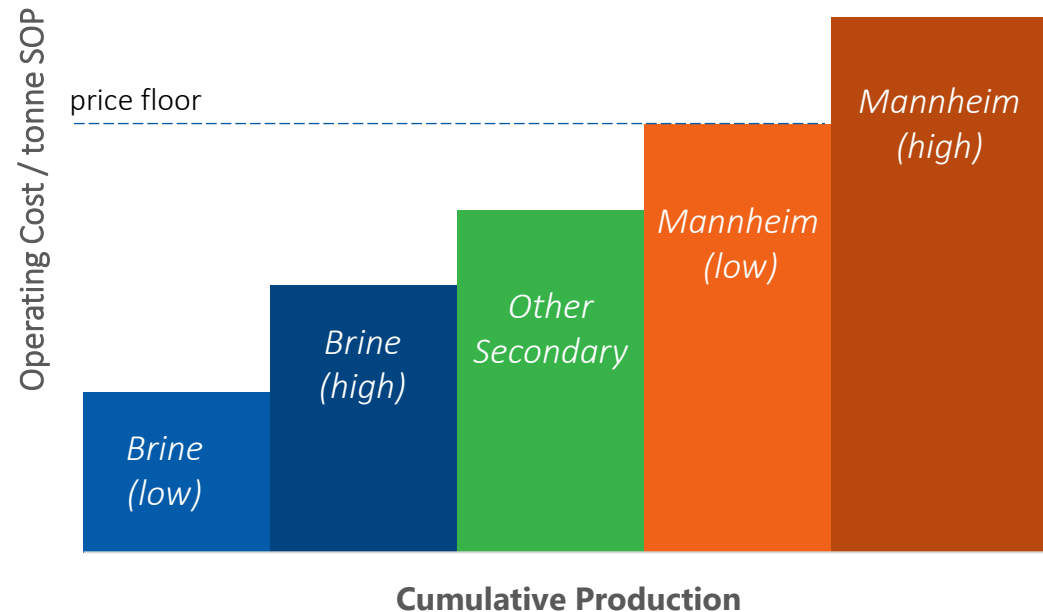


Sources: United Nations, World Bank CRU

BRINE SOP – LOWEST COST PRODUCTION

- Primary production of SOP, from brine, is the lowest cost source of SOP but there is insufficient resources available to meet global demand of ~7Mtpa.
- The Mannheim Process is required to meet demand. The process heats MOP with sulphuric acid to around 800°C, producing hydrochloric acid as a waste product.
- As both methods are needed to meet global demand the Mannheim Process creates an industry price floor well-above the cost of brine sources.

With the natural endowment of the minerals dissolved in brine and the ability to harvest solar evaporation to produce SOP, brine producers are generally low-cost producers

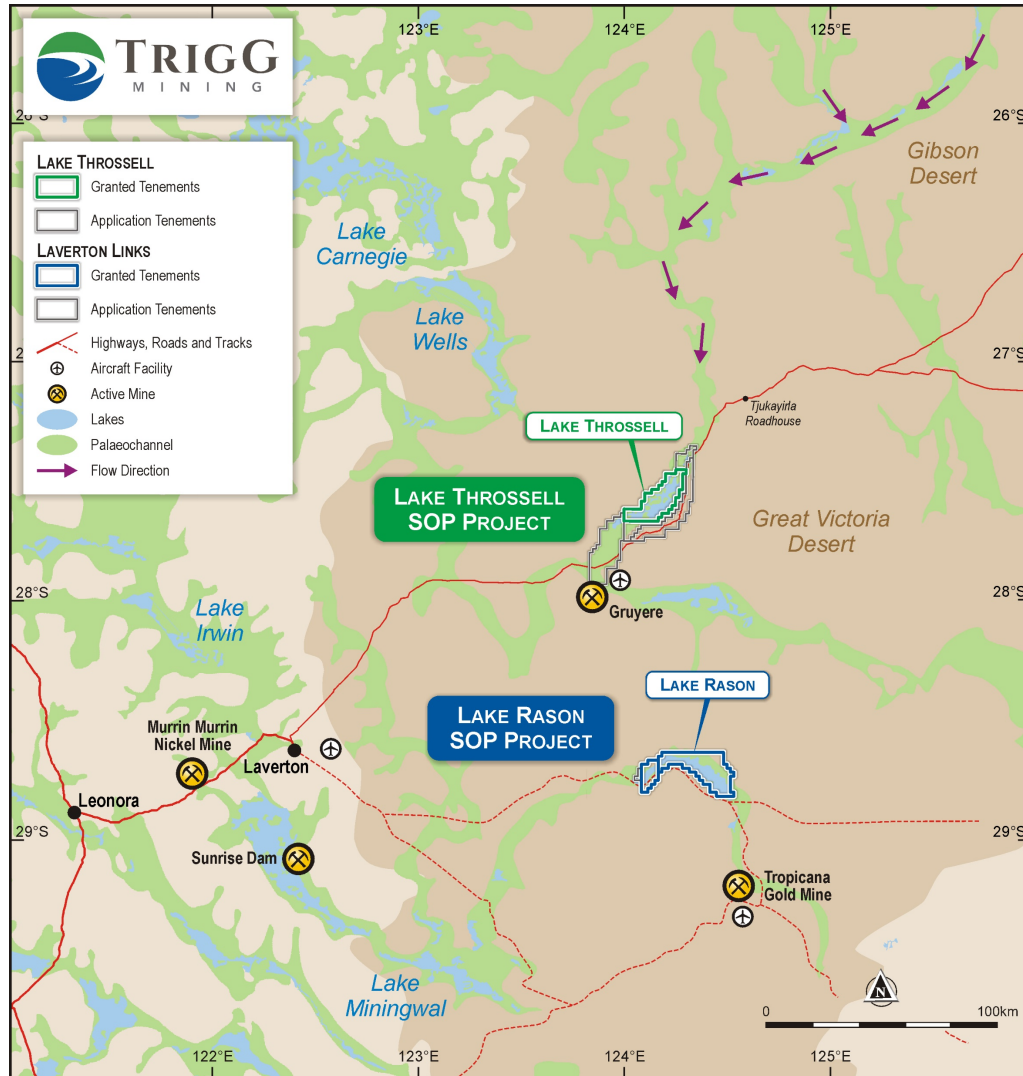


TRIGG MINING'S SOP PROJECTS



Early morning at Lake Throssell, looking west from the helicopter

GEOLOGY / HYDROGEOLOGY



The projects lie near the terminus of extensive palaeo-valley catchment areas (ancient river valleys) which extend for over 500km and are underlain by potassium-bearing source rocks (granites, sandstones and salt diapirs).

Brine solutions carrying potassium mineralisation have been concentrating in the palaeochannels and salt lakes (evaporite systems) for millions of years.

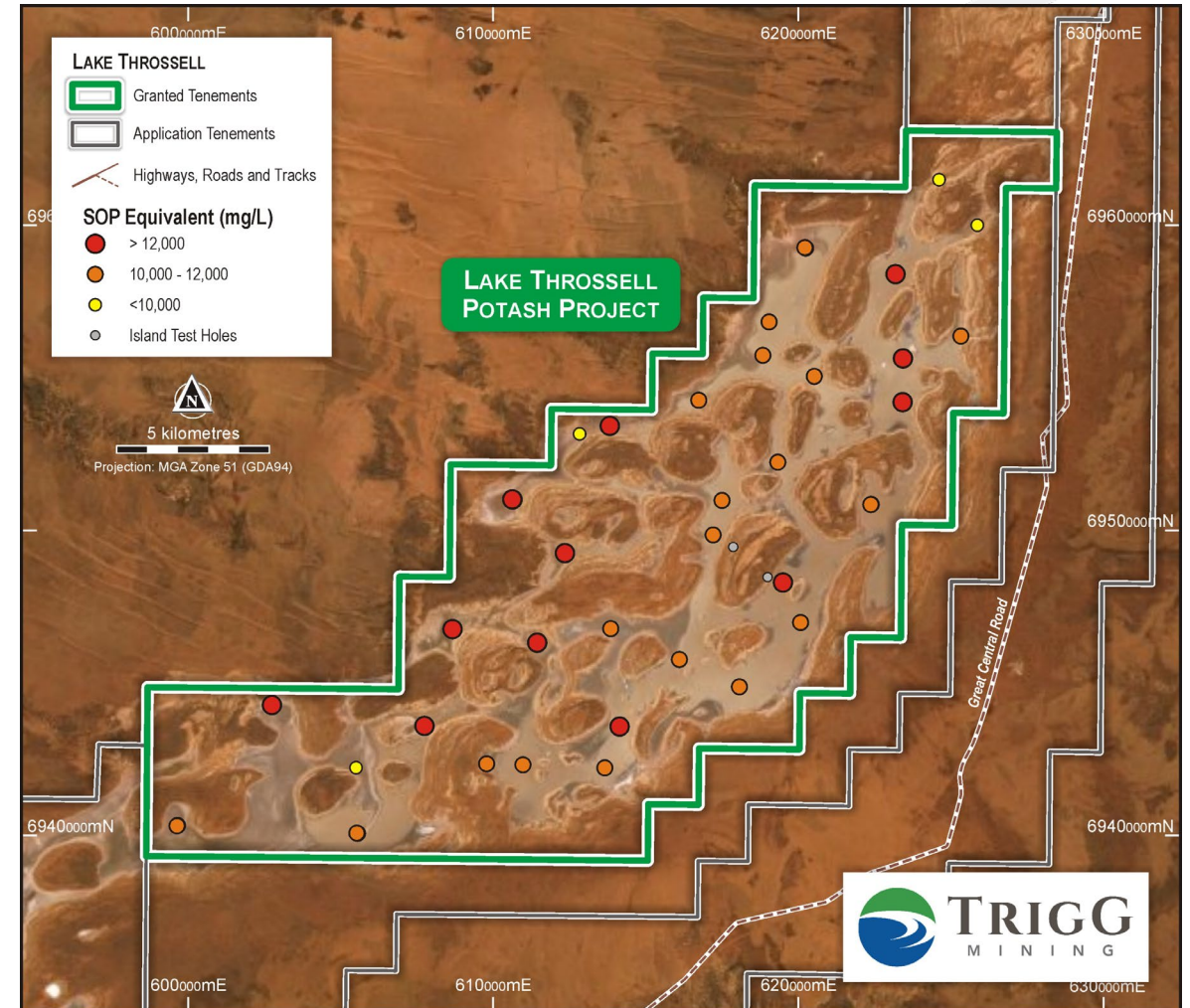


LAKE THROSSELL SULPHATE OF POTASH PROJECT

A high-grade sulphate of potash discovery

HIGHLIGHTS OF RECENT EXPLORATION

- 1,085km² of tenure, straddles the Great Central Road
- Highest grade so far - 14,800 mg/L SOP
- Recent 26-hole rotary drilling program drilled to a depth of up to 10m returned average grade of 11,300mg/L SOP
- 90% of all holes drilled to date returned grades exceeding 10,000mg/L SOP

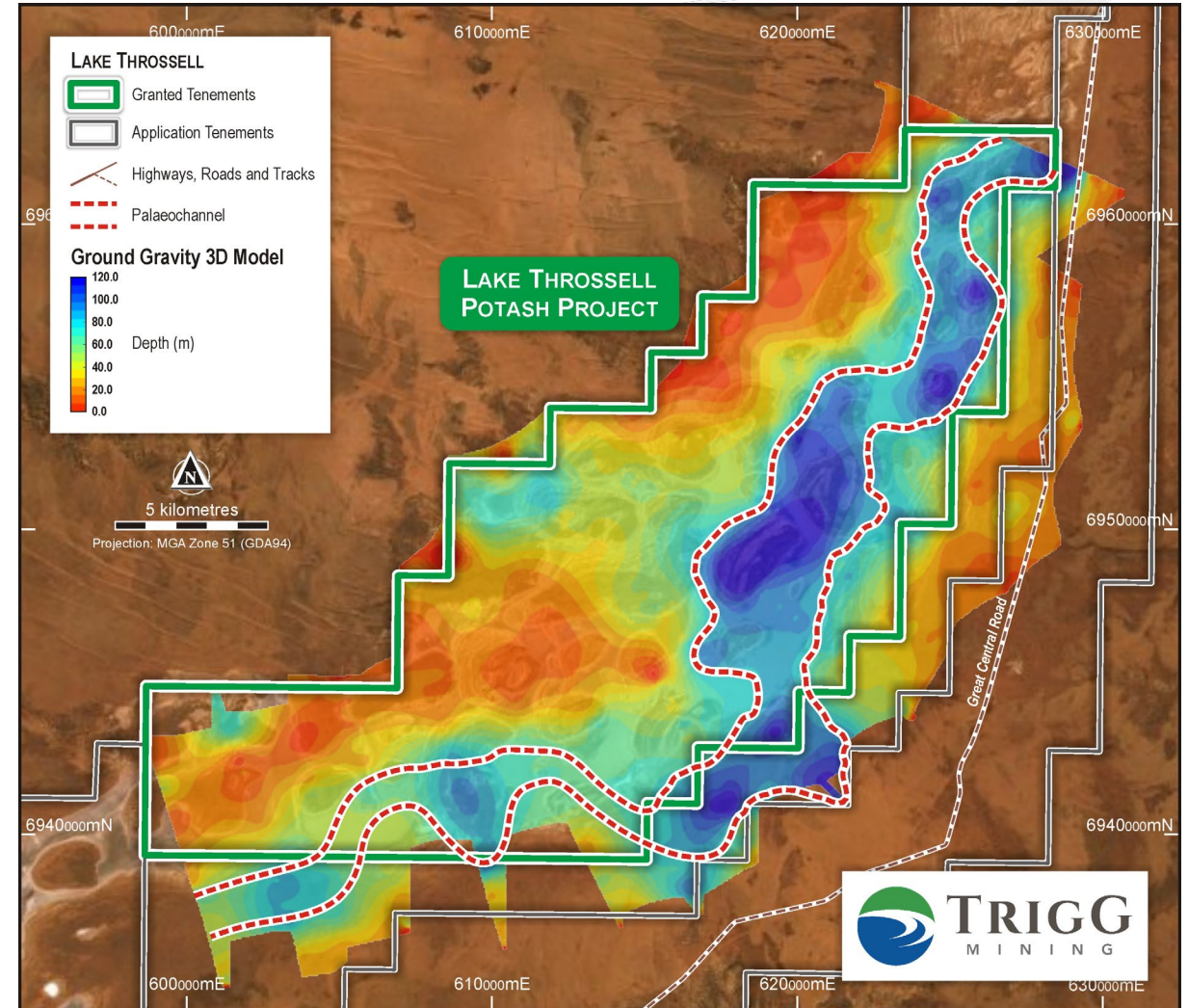


LAKE THROSSELL SULPHATE OF POTASH PROJECT

Potential for a large-volume, high-grade SOP project

GRAVITY CONFIRMS PALAEOVALLEY TARGETS

- In-fill ground gravity survey confirms presence of large- scale palaeovalley
- Potentially up to 6km wide in places and extends for around 46km under the granted and central Lake Throssell tenement
- Maiden air-core drilling program planned to test the full extend of the palaeochannel, awaiting drill rig mobilisation
 - News Flow: assay results followed by an Inferred Mineral Resource estimate.



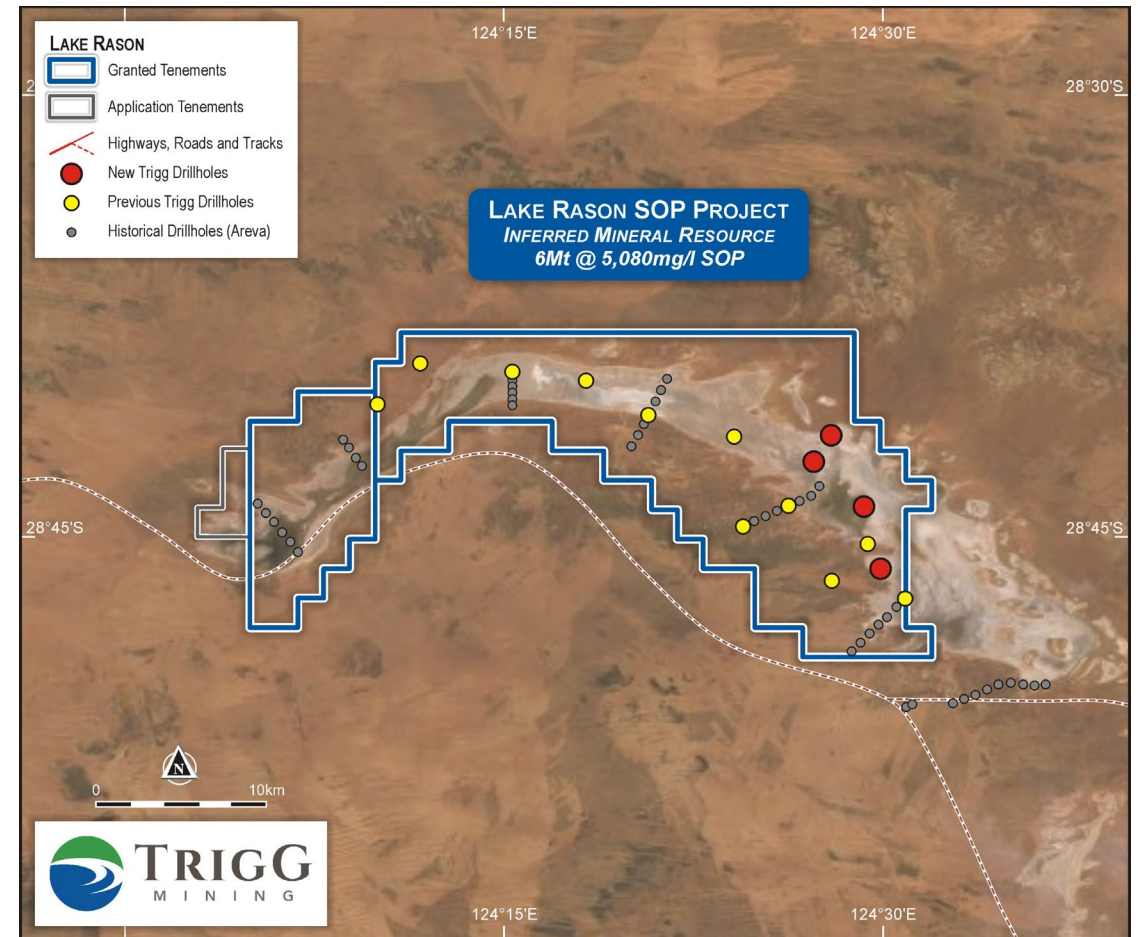
LAKE RASON SULPHATE OF POTASH PROJECT

Potential satellite project

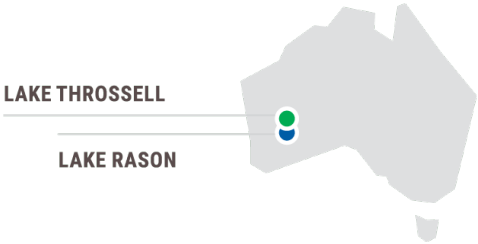
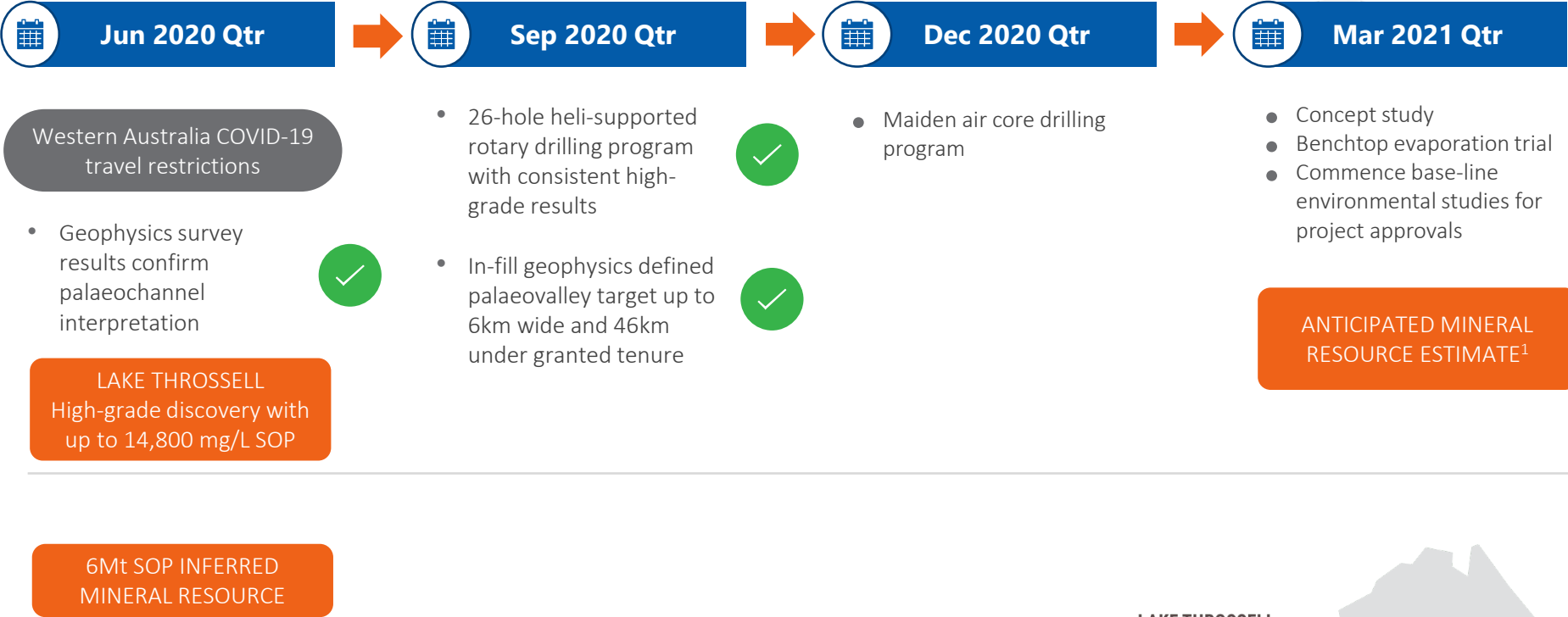
- The Lake Rason Project covers 500km² including 194km² of playa lake and 64km of interpreted palaeochannel
- Inferred Mineral Resource of 6Mt @ 5,080 mg/L SOP¹
- Potential to increase volume and grade to the west within new tenement applications, with the westernmost hole (LRTAC001) returning results of up to 6,645 mg/L SOP



¹ See Competent Person's Statement

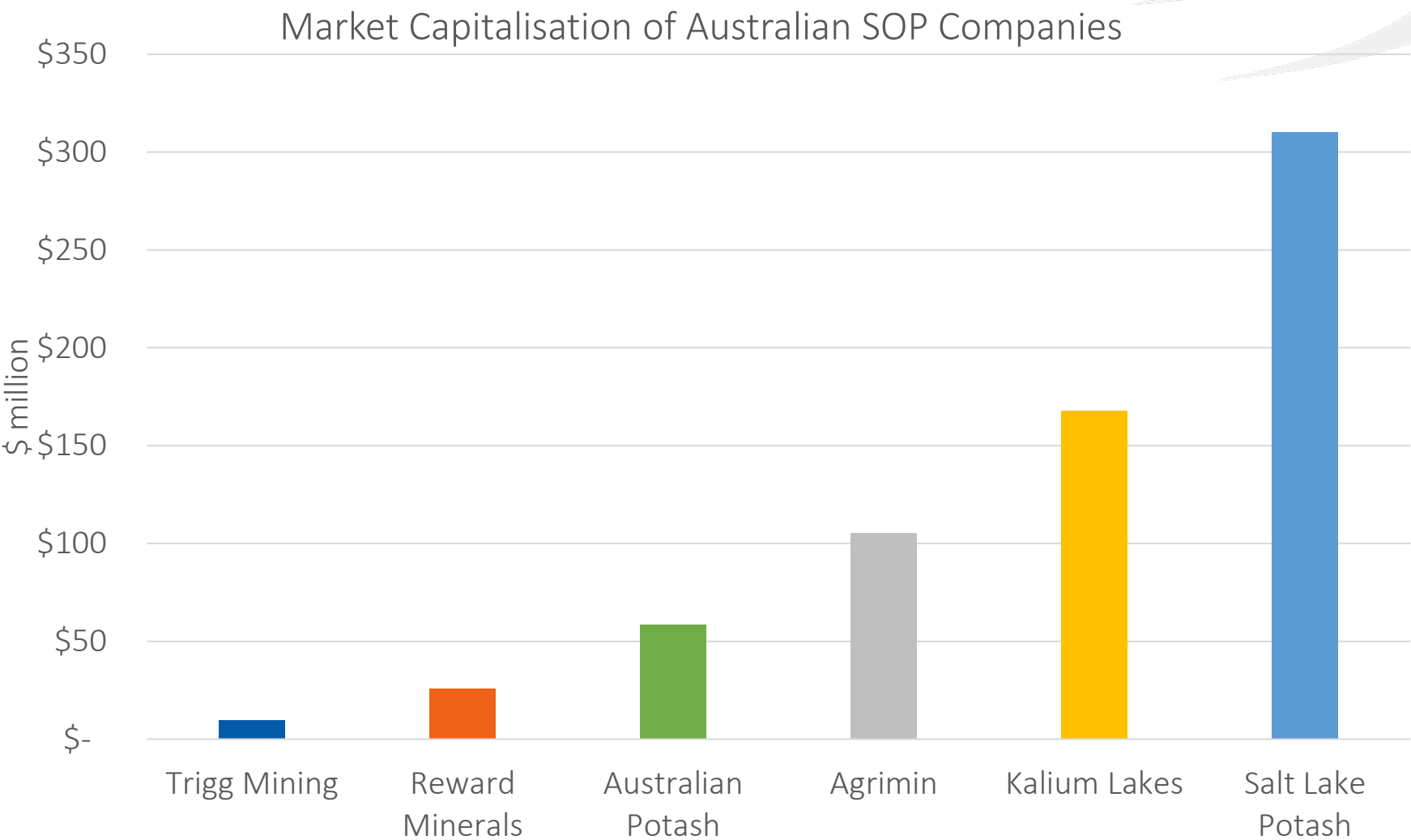


RAPID PROJECT ADVANCEMENT



1. Pending drill results

MARKET CAPITALISATION OF AUSTRALIAN SOP COMPANIES



Trigg Mining - highly leveraged to growth

Based on share prices as at 05/09/2020

WHY INVEST IN TRIGG MINING?



- Strong global market and demand fundamentals driven by global mega trends
- Low-risk jurisdiction – Western Australia
- Strategic landholding – 100% rights to 1,585km² of tenure across two Solar SOP Projects
- Well supported by infrastructure – roads, rail, airports and two gas pipelines
- Lake Throssell – A rapidly evolving high-grade discovery
- Lake Rason – 6Mt Inferred Mineral Resource with potential to expand to the west
- Highly leveraged to growth
- A motivated and experienced team, driven to deliver value for shareholders

DISCLOSURES AND DISCLAIMERS

Cautionary Statement

This presentation (Presentation) is for informational purposes only and is not a prospectus, disclosure document or offer document under the Corporations Act 2001 (Cth) (Corporations Act) or any other law. This Presentation does not constitute, and is not to be construed as, an offer to issue or sell, or a solicitation of an offer or an invitation to subscribe for, buy or sell securities in Trigg Mining Limited ACN 168 269 752 (TMG).

This Presentation does not contain, and does not purport to contain, all information that recipients may require to make an informed assessment of TMG or its securities. Statements in this Presentation are made only as at the date of this Presentation unless otherwise stated and remain subject to change without notice. Neither TMG nor any of its directors, officers, employees, agents or consultants makes any representation or warranty, express or implied, as to the fairness, reliability, accuracy or completeness of the information contained in this Presentation, or as to any omission from this Presentation. To the maximum extent permitted by law, each such person disclaims any liability (including by reason of negligence or negligent misstatement) in relation to this Presentation, the information contained in it, or any omissions from it. To the maximum extent permitted by law, each such person also disclaims any responsibility to inform any recipient on any matter which subsequently comes to their notice which may affect the information contained in this Presentation, and undertakes no obligation to provide any additional or updated information whether as a result of new circumstances, future events or results or otherwise.

Forward Looking Statements

This Presentation contains 'forward-looking information' that is based on TMG's expectations, estimates and projections as of the date on which the statements were made. This forward-looking information includes, among other things, statements with respect to prefeasibility and definitive feasibility studies, TMG's business strategy, plans, development, objectives, performance, outlook, growth, cash flow, projections, targets and expectations, mineral reserves and resources, results of exploration and related expenses. Generally, this forward-looking information can be identified by the use of forward-looking terminology such as 'outlook', 'anticipate', 'project', 'target', 'potential', 'likely', 'believe', 'estimate', 'expect', 'intend', 'may', 'would', 'could', 'should', 'scheduled', 'will', 'plan', 'forecast', 'evolve' and similar expressions. Persons reading this Presentation are cautioned that such statements are only predictions, and that TMG's actual future results or performance may be materially different. Forward-looking information is subject to known and unknown risks, uncertainties and other factors that may cause TMG's actual results, level of activity, performance or achievements to be materially different from those expressed or implied by such forward-looking information. Forward-looking information is developed based on assumptions about such risks, uncertainties and other factors set out herein, including but not limited to the risk factors set out in Section 13 of the prospectus dated 24 April 2019. A copy of the prospectus may be viewed online at www.triggmining.com.au

Competent Person Statement

For information referring to the exploration results in this document, refer to the prospectus and announcements dated 24/04/2019, 14/07/20, 04/08/20, 10/08/20 and 24/08/2020. The Company confirms that it is not aware of any new information or data that materially affects the information included in the original market announcements and, in the case of estimates of Mineral Resources, Exploration Target or Ore Reserves that all material assumptions and technical parameters underpinning the estimates in the relevant market announcement continue to apply and have not materially changed. The Company confirms that the form and context in which the Competent Person's findings are presented have not been materially modified from the original market announcements; and that the information in the announcement relating to exploration results is based upon, and fairly represents the information and supporting documentation prepared by the named Competent Persons.



APPENDIX – LAKE RASON INFERRED MINERAL RESOURCE

Aquifer Type	Volume (10 ⁶ m ³)	Total Porosity (-)	Brine Volume (10 ⁶ m ³)	Specific Yield (-)	Drainable Brine Volume (10 ⁶ m ³)	K Grade (mg/L)	SO ₄ Grade (mg/L)	SOP Grade (mg/L)	Drainable Brine SOP Mass (Mt)	Total Brine SOP Mass (Mt)
Surficial	3,060	0.40	1220	0.10	306	2,290	21,400	5,100	1.56	6.23
Crete	5,020	0.38	1910	0.07	351	2,330	20,900	5,200	1.83	9.91
Mixed	230	0.30	70	0.10	23	2,390	21,900	5,320	0.12	0.36
Basal Sand	1,020	0.30	310	0.21	214	2,390	22,600	5,330	1.14	1.63
Saprolite	2,800	0.20	560	0.03	84	2,210	21,000	4,920	0.41	2.76
Saprock	9,310	0.10	930	0.02	186	2,050	21,000	4,570	0.85	4.25
Total Inferred Mineral Resource	21,400		4,990		1,160	2,280	21,400	5,080	5.91	25.2

Note: errors may be present due to rounding. Approximately 1.2Mt of Drainable SOP Mass is present in Exploration License Application E38/3437.

Total porosity and total brine SOP mass is provided to compare the total SOP tonnes with the drainable Mineral Resource. As can be seen, the total brine volume is significantly higher than reporting drainable brine volumes. For economic production, the drainable brine volume is the most important volume because only a small proportion of brine present of the total porosity following removal of drainable porosity can be typically abstracted through diffusional processes during recharge of the lake surface.

APPENDIX – SOP EVAPORATION PROCESS



**PUMPING FROM
TRENCHES AND BORES**



SOLAR EVAPORATION



HARVESTING



PURIFICATION



**SOP
FERTILISER**



Level 1, Office E, 1139 Hay Street
West Perth, WA 6005
(08) 6114 5685

info@triggmining.com.au

www.triggmining.com.au

