



ACN 009 253 187

AUSTRALIAN SECURITIES EXCHANGE ANNOUNCEMENT

23 NOVEMBER 2020

EDENCRETE® - SIGNIFICANT NEW KANSAS PROJECT

Please see attached an ASX Announcement by Eden Innovations Ltd (ASX: EDE) for further details.

Background

Tasman through its wholly owned subsidiary, Noble Energy Pty Ltd, holds 624,634,707 fully paid shares in Eden representing 33.27% of the total issued capital of Eden Innovations Ltd and 14,814,815 EDEOB options (representing 21.26% of the issued EDEOB options).

A handwritten signature in black ink, appearing to read "Aaron Gates", with a long horizontal line extending to the right.

Aaron Gates
Company Secretary



Innovations that work.™

ACN 109 200 900

AUSTRALIAN SECURITIES EXCHANGE ANNOUNCEMENT

23 November 2020

EdenCrete®- Significant New Kansas Project

Eden Innovations Ltd (ASX: EDE) is pleased to report the further expansion of the US EdenCrete® market, with the commencement of a new and significant construction project that includes EdenCrete® enhanced concrete in a \$51 million expansion project that includes a new 505-bay carpark and 10-story tower which will change the skyline of Wichita, Kansas.

The project, RISE: A Beacon of Progress, is taking place in two phases beginning with the construction of the new five-story private carpark building, that will include 17,000 square feet of street-level retail space (see Figure 1).

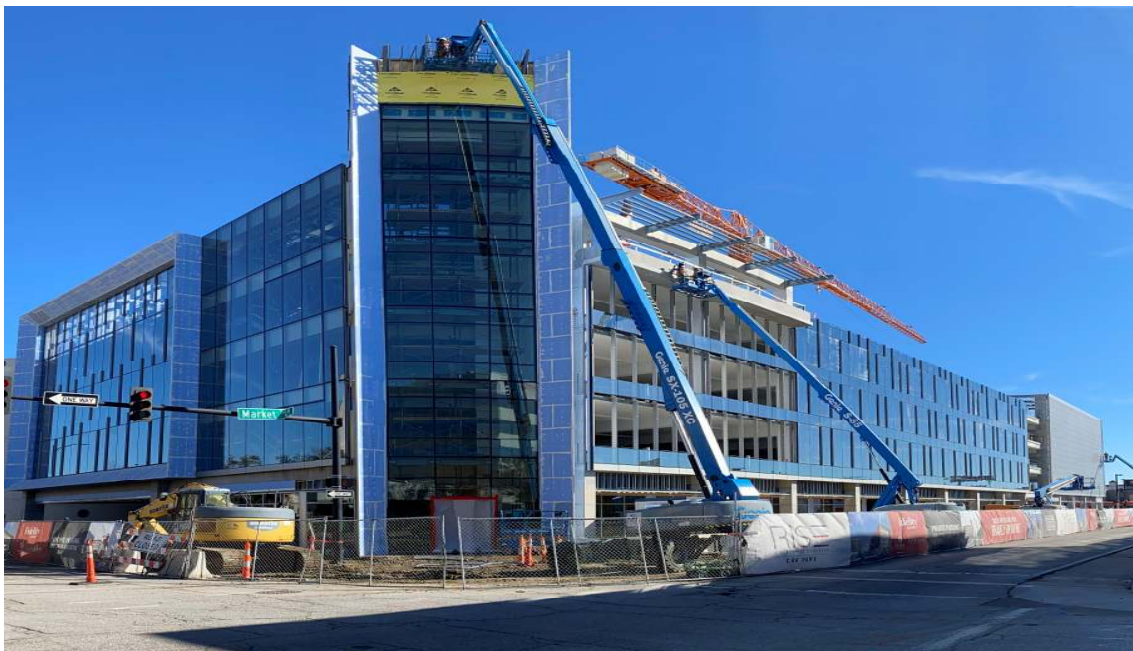


Figure 1 Rise project in Wichita, Kansas.

Phase two will be the construction of the The Tower, a 10-story building with 135,000 square feet (12,542 square metres) of floor space, including a large rooftop green space featuring grass and trees, on the site of the original parking deck. Upon completion the new carpark will be connected to The Tower by a two-story walkway.

Andale Ready Mix is the concrete supplier for the project and approved and specified the use of EdenCrete® in the concrete to be installed in the decks, ramps, sidewalks and entryways of the new carpark, to deliver improved crack reduction, abrasion and scaling resistance and better pumpability.

A total of 2,700 cubic yards (2,064 m³) of concrete is estimated to be required for this phase of construction that will include more than US\$30,000 worth of EdenCrete®. Laying the carpark decks and ramps, in which the EdenCrete® infused concrete is being applied in a 4 inch (100mm) thick concrete overlay, commenced on 19 November 2020 and delivered a very successful outcome. The first 200 cubic yards of EdenCrete® concrete was pumped via a boom pump to the fourth-floor deck level, a vertical distance of approximately 15 metres, pumped through approximately 30 metres of 100mm diameter hose (see Figure 2).

The mix pumped well with no issues. Pump pressures were measured at low 100's bar (around 10 MPa). The pump operator said the required pumping pressure in a similar pumping application, without the added EdenCrete®, would usually be in the range of 200-225bar (20-22.5 MPa).

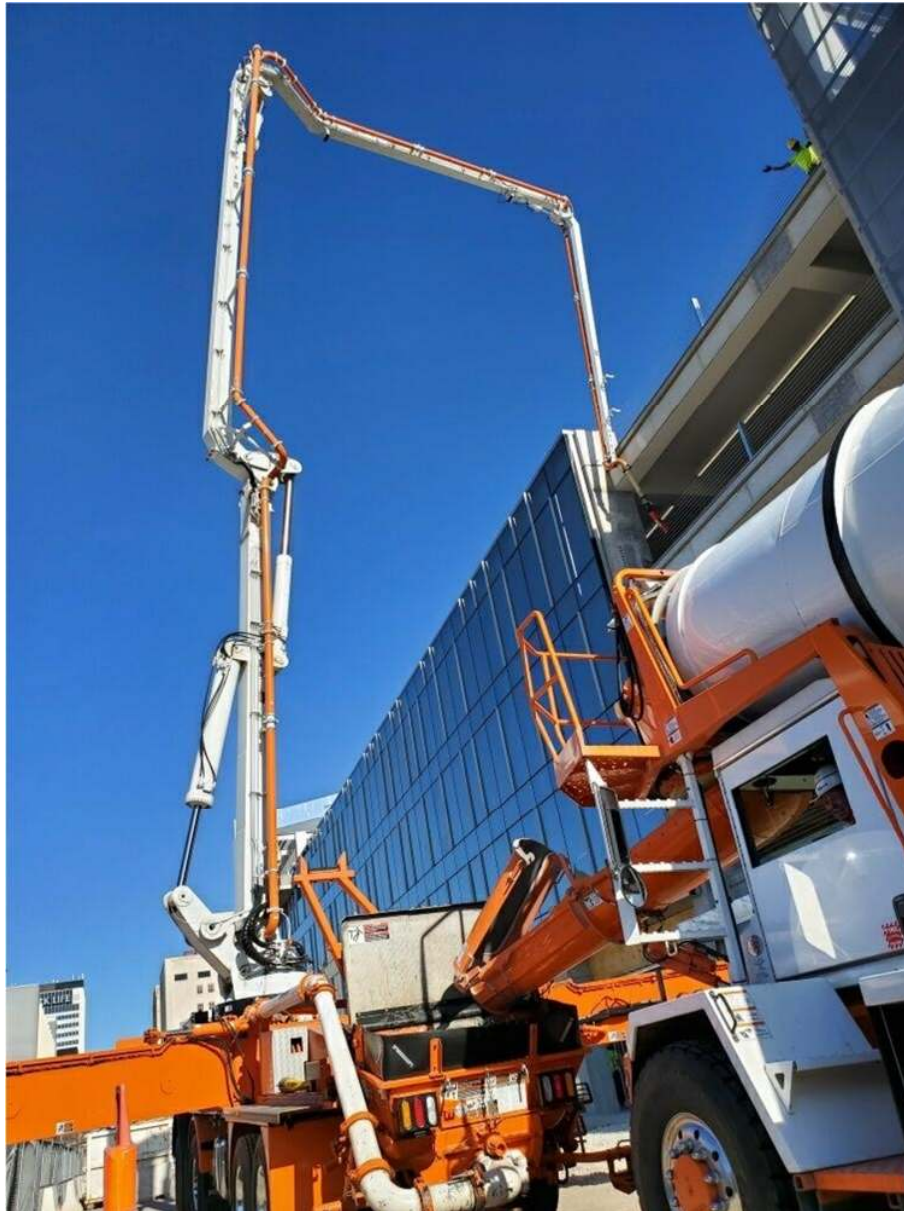


Figure 2. Pumping EdenCrete® concrete to fourth floor level of carpark

The finish was reported to be exceptional, particularly with the suspended broom finish that was specified (see Figures 3 and 4).



Figure 3. Laying EdenCrete® concrete overlay



Figure 4. Applying suspended broom finish to the EdenCrete® concrete

The initial parts of this project, completed last week, involved the placement of EdenCrete® concrete for an interior sidewalk, placed with shuttle buggies (see Figures 5 and 6) and a ground floor, Slab on Grade overlay on a concrete base (see Figure 7), that was placed with a boom pump. Positive feedback was

received from both the concrete finishers and general contractor on the properties inherent in the EdenCrete® infused concrete mix.



Figure 5. Interior sidewalk being installed



Figure 6. Interior sidewalk being finished



Figure 7. Slab on Grade being placed and finished

This project is another major milestone for EdenCrete® infused concrete being:

- the first project in Wichita,
- the first project in Kansas,
- the first project with this concrete provider,
- the first project with this General Contractor; and
- the first project in which EdenCrete® infused concrete is used as a thin overlay to deliver both improved crack reduction, and abrasion and scaling resistance in a high-rise parking structure.

CONCLUSION

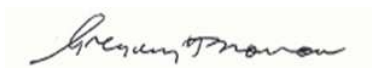
The EdenCrete® market footprint in the US is continuing to grow with more trials resulting in new projects, in new locations, with new customers and for new applications. This first project in Kansas confirms this continued market growth notwithstanding the difficulties that are being experienced as result of the COVID-19 pandemic.

BACKGROUND

EdenCrete® is Eden's 100% owned, proprietary carbon-strengthened concrete additive that enhances a wide range of performance characteristics of the concrete including compressive strength, flexural strength, tensile strength, abrasion resistance, reduced permeability, increased modulus of elasticity, and reduced shrinkage, delivering stronger, tougher, more durable and longer lasting concrete.

EdenCrete® delivers not only a wide range of performance benefits in concrete, but also delivers economic advantages through many ways, including greater durability and service life for the concrete. Additionally, in applications where fresh concrete has to be pumped under pressure, including in shotcrete or pumping of fresh concrete up high-rise projects, it greatly reduces the friction enabling the required pumping pressure to be reduced, resulting in less wear on the pumps, and safer working conditions due to reduced nozzle pressure being required, which in turn results in cost savings through less wasted concrete resulting from reduced re-bound in the case of shotcrete applications.

One of the primary target markets for EdenCrete® is improving the performance of concrete used in the construction and maintenance of concrete roads, bridges and other infrastructure, particularly where it is subject to heavy wear, freeze/thaw weather conditions and/or high levels of added salt. Additionally, it has potential for use in most other concrete applications including high-rise building construction, marine and coastal applications, water storage and pipelines, hardstand areas, warehouses, shotcrete applications and pre-stressed and pre-cast concrete structures and products.



Gregory H. Solomon
Executive Chairman

This announcement was authorised by the above signatory.
For further information please contact Aaron Gates on +61 8 9282 5889.